

**BUKTI KORESPONDENSI
ARTIKEL JURNAL INTERNASIONAL BEREPUTASI**

Judul artikel : Insecticidal activity of culture filtrates from liquid medium of *Beauveria bassiana* isolates from South Sumatra (Indonesia) wetland soil against larvae of *Spodoptera litura*

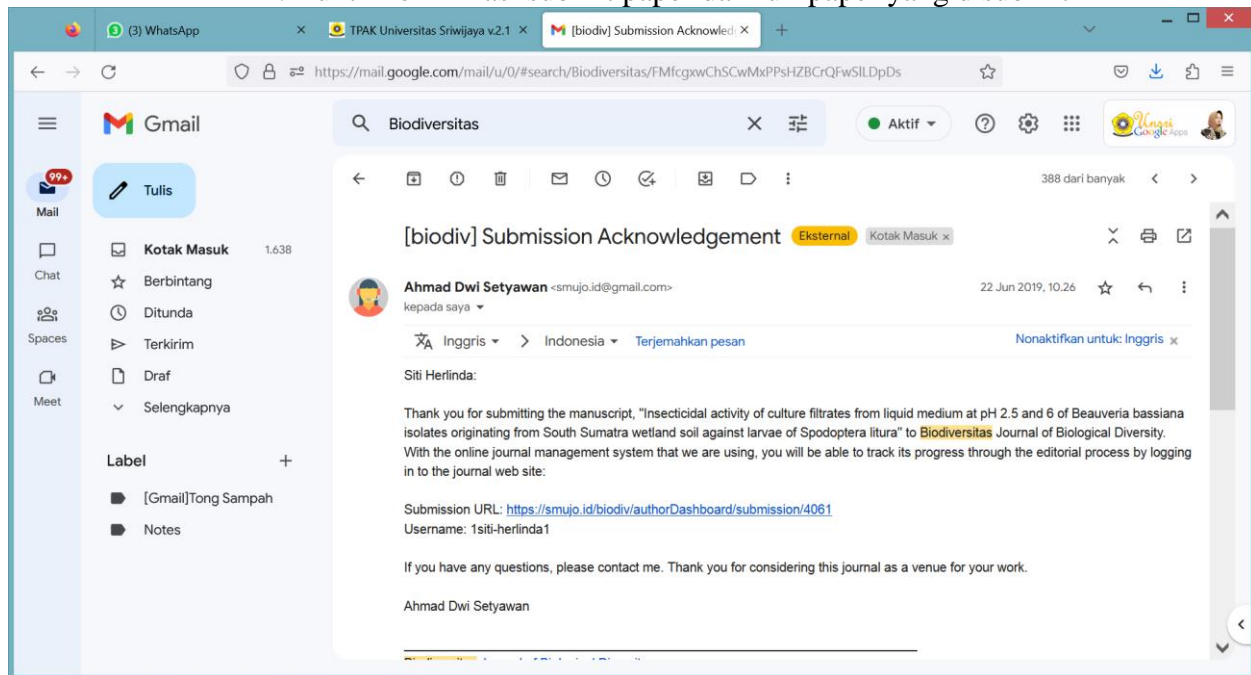
Jurnal : Biodiversitas

Penulis: Dwi Rizki Ayudya, Siti Herlinda, Suwandi Suwandi

Bukti korespondensi

No.	Perihal	Tanggal
1.	Bukti Konfirmasi submit paper dan full paper yang disubmit	22 Juni 2019
2.	Bukti konfirmasi review pertama dan hasil revisi pertama	5 Juli 2019
3.	Bukti konfirmasi paper accepted, uncorrected Proof dan hasil koreksi penulis	6 Juli 2019
4.	Bukti tagihan untuk penerbitan artikel	6 Juli 2019

1. Bukti Konfirmasi submit paper dan full paper yang disubmit



COVERING LETTER

Dear **Editor-in-Chief**,

I herewith enclosed a research article,

Title:

Insecticidal activity of culture filtrates from liquid medium at pH 2.5 and 6 of *Beauveria bassiana* isolates originating from South Sumatra wetland soil against larvae of *Spodoptera litura*

Author(s) name:

Dwi Rizki Ayudya¹, Siti Herlinda^{2*}, Suwandi Suwandi²

Address

¹Graduate Program of Crop Sciences, Faculty of Agriculture, Universitas Sriwijaya, Palembang, Indonesia 30139

²Department of Plant Pest and Disease, Faculty of Agriculture, Universitas Sriwijaya, Indralaya 30662, South Sumatra, Indonesia

³Research Center for Sub-optimal Lands (PUR-PLSO), Universitas Sriwijaya, Palembang 30139, South Sumatra, Indonesia

*Corresponding author: sitiherlinda@unsri.ac.id

For possibility publication on the journal:

Biodiversitas

Novelty:

The novelty of the findings was found that the culture filtrates of isolates of BPdR, BJgTs, BSmTd2, BSwTd3, BSwTd4, and BKKPp2 from pH 2.5 media still had high toxicity against the larvae of the insect pest. These isolates have the potential to survive and settle on low pH soils. These isolates have the opportunity to be successfully utilized in low pH ecosystems, such as peatlands, tidal lowlands, and freshwater swamps.

Statements:

This manuscript has not been published and is not under consideration for publication to any other journal or any other type of publication (including web hosting) either by me or any of my co-authors. Author(s) has been read and agree to the Ethical Guidelines.

List of five potential reviewers

Zi-Hong Chen

Institute of Insect Resources, College of Plant Science and Technology,

Huazhong Agricultural University, Wuhan 430070, China

email: yangfenglian@mail.hzau.edu.cn

Maoye Li

School of Plant Protection, Anhui Agricultural University, Hefei 230036, Anhui Province, China

email: sj412bq@163.com

K. N. P. Chandra Teja

Department of Microbiology, Agri Biotech Foundation, Hyderabad, India

email: kteja26@gmail.com

Fedai Erler

Akdeniz University, Faculty of Agriculture, Department of Plant Protection 07070 Antalya, Turkey

email: erler@akdeniz.edu.tr

Fajar Rahmah Nuraini

Department of Biology, Faculty of Mathematics and Natural Sciences, Universitas Sebelas Maret. Jl. Ir. Sutami 36A

Kentingan Surakarta 57126, Central Java, Indonesia

email: ratnasetya@yahoo.co.id

Place and date:

Palembang, 22 June 2019

Sincerely yours,

Siti Herlinda

Insecticidal activity of culture filtrates from liquid medium at pH 2.5 and 6 of *Beauveria bassiana* isolates originating from South Sumatra wetland soil against larvae of *Spodoptera litura*

DWI RIZKI AYUDYA¹, SITI HERLINDA^{2*}, SUWANDI SUWANDI²

¹Graduate Program of Crop Sciences, Faculty of Agriculture, Universitas Sriwijaya, Palembang, Indonesia 30139

²Department of Plant Pests and Diseases, Faculty of Agriculture, Universitas Sriwijaya, Indralaya 30662, South Sumatra, Indonesia

³Research Center for Sub-optimal Lands (PUR-PLSO), Universitas Sriwijaya, Palembang 30139, South Sumatra, Indonesia

*email: sitiherlinda@unsri.ac.id

Manuscript received: 22 June 2019. Revision accepted: 2019

Abstract. The obstacle in utilizing entomopathogenic fungi to control pest insects in wetlands is inability to their isolates to survive during the saprophytic phase due to the soil being very acidic. Therefore, the exploration of fungi being able to survive in the acidic soil was utilized in the acidic ecosystem. This study aimed to test the toxic activity of *Beauveria bassiana* culture filtrates from liquid medium at pH 2.5 and 6 against *Spodoptera litura* larvae. There were 10 isolates used from South Sumatra and grown in liquid media at pH of 2.5 and 6 for six weeks. The result showed that the culture filtrate from liquid medium at pH 6 was more toxic against the larvae than that at pH 2.5. The mortality of the larvae at pH 6 reached 92%, while that at pH 2.5 reached 13.33%. The finding is that the culture filtrate isolates of BPdR, BJgTs, BSwTd2, BSwTd3, BSwTd4, BKKPp2 from pH 2.5 media still caused high larvae mortality (6.67-13.33%). These seven isolates are superior due to their still being toxic at pH 2.5. Consequently, the chance of success in utilizing these isolates for biological control in acidic ecosystems, such as peatlands, tidal lowlands, and freshwater swamps.

Key words: *Capsicum annuum*, entomopathogenic fungus, mortality, LT₅₀, LT₉₀

Running title: Insecticidal activity of *Beauveria bassiana*

INTRODUCTION

Indonesia Wetlands are characterized by an ecosystem in the forms of freshwater swamps, tidal lowlands, and peatlands spreading in Sumatra, Kalimantan, and Papua islands covering 9.2 million hectares of freshwater swamps, 11 million hectares of tidal lowlands, and 14.9 million hectares of peatlands (Mulyani and Sarwani 2013). Soil of wetlands is generally submerged during certain months and the difference in immersion time causes the specific cultivated plants (Safitri et al. 2018). Freshwater swamps are generally planted with rice, chili and other vegetables, and tidal lowlands are also planted with rice but more intensive (two–three indexes) compared to that of freshwater swamps (one index) (Herlinda et al. 2018b). While peatlands are rarely planted with annual crops, they are usually used for oil palm plantation (Dohong et al. 2018), forestry and conservation areas.

The Indonesia wetland soil is generally varied, particularly viewed from the aspects of soil moisture, texture, and pH. Soil texture of freshwater swamps is silt dominant (mud) which is silt sedimentation from the river flow, and contains balanced clay and sand (Kartika et al. 2018), the tidal lowlands contain silt of a mixture of river and sea water deposits, the clay and sand content remains balanced (Marlina et al. 2016), the peat soil does not contain clay, sand, and the silt contains only organic matter (Mulyani and Sarwani 2013). The freshwater swamp soil contains pH ranging from 4 to 4.5 (Kodir and Juwita, 2016), the tidal lowlands containing pH ranging from 4.17–5.35 (Marlina et al. 2016), and the peatlands containing pH ranging from 3.60-3.95 (Utami et al. 2009).

Entomopathogenic fungi are those of soil parasitizing and killing pest insects and superior in biological control, for example, *Beauveria bassiana* and *Metarhizium anisopliae* (Herlinda et al. 2018a) whose utilization is often constrained by external factors (Sumikarsih et al. 2019). *B. bassiana* is facultative parasites that can be parasitic in insects and saprophytes in soil or organic matter. Soil pH variations of each ecosystem can affect the ability of adaptation of entomopathogenic fungi as saprophytes (Bugeme et al. 2008). The too acidic pH medium that grows both fungi can reduce the viability and density of conidia and even kill the fungi (Rizkie et al. 2017) and reduce the biodiversity of fungi species in the soil (Safitri et al. 2018). However, there are still species or isolates of the fungi whose conidities still survive at pH 2 (Rizkie et al. 2017). According to (Pinnamaneni et al. 2010), the minimum pH for *B. bassiana* capable of producing chitinase enzymes that kill host insects is at pH 4. The pH range of the medium for growing *B. bassiana* under acidic is at (4.0), neutral at (7.0), and basic at (11.0) pH (Qazi 2008). The result of the previous study on wetland soil in South Sumatra showed that the potential of inoculum of *B. bassiana* and *M. anisopliae* from peat soil had the most acidic

48 pH compared to those of freshwater swamps and tidal lowlands (Safitri et al. 2018), yet the effectiveness of these fungi
49 against insect pests was not known. The main insect pests mostly attack chili (*Capsicum annum* L.) and other specific
50 vegetables grown in wetlands (Johari *et al.*, 2014, 2016). Isolates of entomopathogenic fungi able to survive and still
51 effective at extreme low pH are superior isolates that have the potential as biological agents that can be utilized and
52 expected to survive saprophytically on the soil of the wetlands ecosystem. The objective of this research was to test the
53 toxic activity of *B. bassiana* culture filtrates from liquid medium at pH 2.5 and 6 against the larvae of *Spodoptera litura*.

54

MATERIALS AND METHODS

55 Study area

56 The study was conducted at the Laboratory of Entomology, Department of Plant Pests and Diseases, Faculty of
57 Agriculture, Universitas Sriwijaya, Indralaya from October 2018 to March 2019. The average temperature during the
58 experiment was 29.60 °C and relative humidity was 82.34%. All *B. bassiana* isolates used in this experiment were isolates
59 explored from the wetlands South Sumatra, Indonesia (Figure 1) as the results of the exploration carried out by Safitri et
60 al. (2018). In this study, the *S. litura* were selected as tested insects because they most dominantly attacked the vegetable
61 plants commonly grown on wetlands.
62

63 Test insect preparation

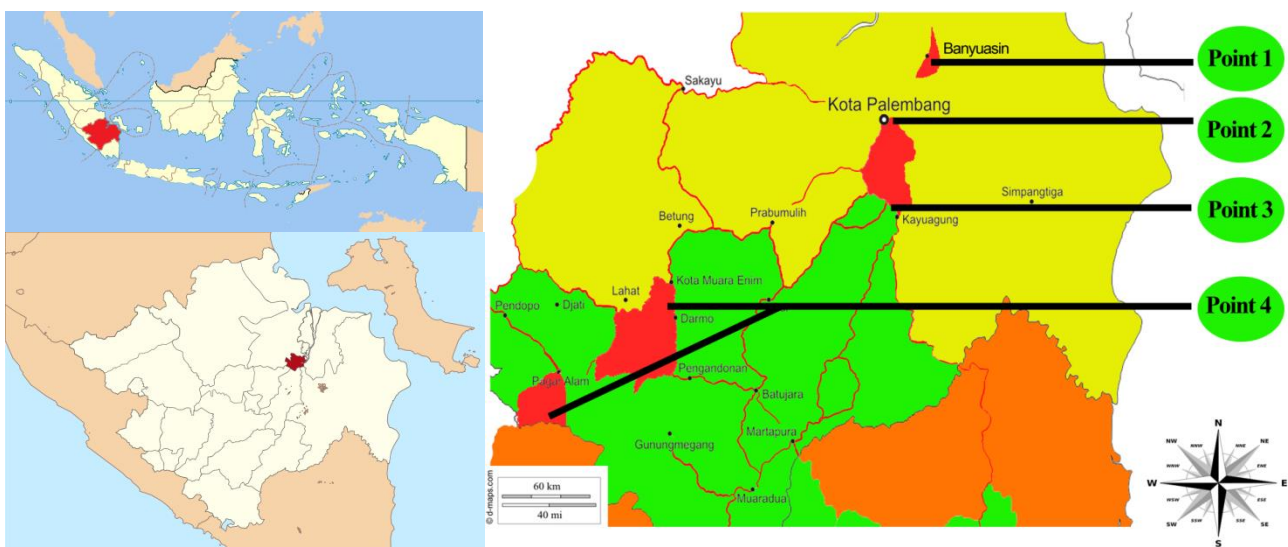
64 The larvae of *S. litura* were collected from chili and other vegetables grown without the application of synthetic
65 insecticides at the Experimental Farm of the Faculty of Agriculture, Universitas Sriwijaya. Then the larvae of *S. litura*
66 were taken to the laboratory and taken care of in a plastic jar (15 x 25 cm) at room temperature. Into the jar was inserted a
67 chili plant for the feed of *S. litura* larvae which were then maintained until the second generation.

68 Every day the larvae were moved into another jar already provided with fresh chili. When the final instar larvae entered
69 the pupa phase, they were moved into a plastic jar having been provided with soil (10 cm thick) which was already
70 sterilized in the oven for 1 hour at 100°C. In this jar, chili plants were provided for the egg laying of *S. litura* adults which
71 started to appear from the pupae.

72 The eggs were placed by the adults on the underside of the leaves. Four days later the egg colonies were moved into
73 other jars that were already provided with new fresh chili leaves for newly hatched larvae feed. The mass-rearing was
74 carried out to obtain the second generation culture. The one day second instar larvae were used for test insects of this
75 study.
76

77 Preparation of *Beauveria bassiana* isolates

78 The isolates were first made fit using a modified method of Herlinda (2010) with the *Tenebrio molitor* larvae in the
79 media culture, Sabouraud Dextrose Agar (SDA, Merck). Then, culturing *B. bassiana* used SDA as much as 16.2 g plus
80 250 ml aquadest, then sterilizing it in an autoclave for 120 minutes at a pressure of 1 atm. On laminar air flow, the SDA
81 solution was poured into a 10 ml Petri dish (9 cm diameter).
82



83
84 **Figure 1.** Locations of *Beauveria bassiana* isolates exploration from wetland soil in South Sumatra, Indonesia: point 1 = tidal
85 lowlands, point 2 = freshwater swamps, point 3= peatlands, and point 4 = highlands (Safitri et al. 2018).
86

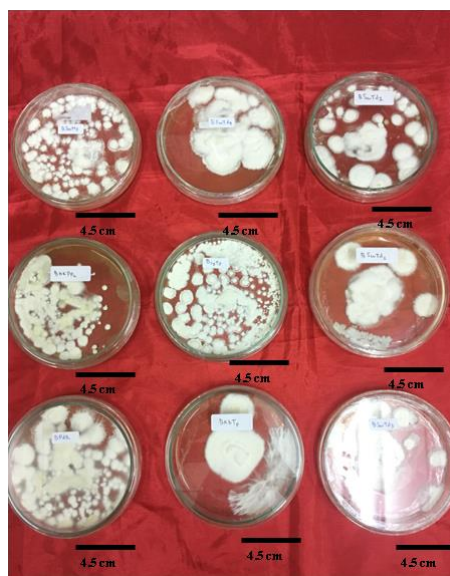


Figure 2. *Beauveria bassiana* SDA culture incubated for 7 days

Table 1. Isolates identity of *Beauveria bassiana* used in this research

Code of isolate	Ecosystems	Vegetation or crop plants	Village or city
BPdR	Freshwater swamps	Paddy	Rambutan
BJgTs	Tidal lowlands	Corn	Telang Sari
BSmMs	Tidal lowlands	Watermelon	Mulya Sari
BSwTd1	Peatlands	Oil palm	Talang Dabok
BSwTd2	Peatlands	Oil palm	Talang Dabok
BSwTd3	Peatlands	Oil palm	Talang Dabok
BSwTd4	Peatlands	Oil palm	Talang Dabok
BKKPp2	Highlands	Rubber and coffee	Pulau Pinang
BKbTp	Highlands	Cabbage	Talang Patai

Preparation of culture filtrate

The a week old isolates of entomopathogenic fungi obtained from SDA media (Figure 2) were then grown in PDB (Potato Dextrose Broth) media as follows. The media composition of PDB consisted of 20 g dextrose monohydrate, 200 g potatoes, and 1,000 ml aquadest. Before being extracted, the potatoes were first cut into cubes with a size of ± 2 cm, and boiled using 1,000 ml aquadest for 20 minutes. Then, the pH of PDB medium was regulated using the method of (Rizkie et al. 2017) by dripping the medium with 32% HCl as many as 1 to 8 drops of 10 μ l micropipette until reaching the pH 2.5. Meanwhile, to get pH 6, the PDB medium was dripped with NaOH 1 mole as many as 1 to 8 drops of 10 μ l micropipette until it reached the pH 6. The measurement of pH used a pH-meter. Based on the consideration of the soil in the wetlands, the determination of the treatment of pH 2.5 and 6 was pH <3, whereas the pH 6 was the ideal pH for fungal growth (Qazi 2008). The liquid medium was poured as much as 150 ml into a heat-resistant glass bottle (volume 300 ml) and sterilized into an autoclave for 120 minutes at a pressure of 1 atm, after being cooled in 1 x 1 cm² *B. bassiana* from the SDA medium. The *B. bassiana* culture broth in this PDB medium was incubated for 6 weeks.

Production of culture filtrate

The culture broth of each *B. bassiana* isolate from the PDB medium which was already incubated for 6 weeks was then filtered to separate extracts from hyphae, mycelia, and conidia by performing two stages of filtering by modifying the method (Cheong 2015). The purpose of separation from hyphae, mycelia, and conidia was to get a culture filtrate containing toxic insecticidal compounds. The first stage of filtration was that the 100 ml of *B. bassiana* culture on the SDB was poured into an erlenmeyer tube (volume of 500 ml) whose tube mouth had the Whatman filter paper number 42 cotton-coated 1 cm thick and produced ± 70 ml coarse culture filtrate. The second stage was that the coarse culture filtrate was filtered using a syringe filter (0.45 μ m-25 mm) conducted as follows: 1 ml of the first stage coarse culture filtrate was sucked using a hypodermic needle (volume of 6 ml) and then the needle was removed and the base of the needle was attached a syringe filter; then the needle was attached back to the hypodermic needle and 1 ml of crude culture filtrate was filtered using a syringe filter to obtain the culture filtrate. The culture filtrates were used at a concentration of the original preparation without dilution by steril water.

120

121 **Isolates activity insecticidal test of *Beauveria bassiana***

122 The result of the second filtration of 1 ml culture filtrates was dripped onto the chili leaves; then these leaves were
 123 infested with test insects (the second instar of *S. litura* larvae) as many as 25 test insects per isolate for 6 hours and
 124 repeated three times. Before being treated, the test insects were left unfed for 2 hours and weighed using a Portable
 125 Jewelry Scale (capacity of 30 g x 0.01 g). After 6 hours of infestation and ensuring that all larvae ate the leaves moistened
 126 with the culture filtrate *B. bassiana*, the test insects were moved into a plastic cylinder (the top of which was covered with
 127 gauze) in which there were 5 new chili leaves (without culture filtrate of *B. bassiana*). Every 1 x 24 hours the dead larvae
 128 were recorded and the chili leaves were replaced and the area of the eaten leaves, the weight of the feces, and the larvae
 129 body weight were measured. The observations of these variables were carried out for 12 days.

130 To measure the percentage of the foliar damage area caused by the insects, a bioleaf application of Machado et al.
 131 (2016) was used. The area of chili leaves before being eaten was measured using the formula of Widuri et al. (2017) as
 132 follows:

$$ILD = 0.606 \times P \times L$$

133 ILD = Index of leaf area (cm²); P = leaf length; L = leaf width

134 Defoliation is the percentage of leaves eaten by the insects. Defoliation was measured using the following formula:

$$LDD = D \times ILD$$

135 LDD = area of eaten leaves; D = Defoliation

136 **Data analysis**

137 Differences in data on body weight and feces, and the area of eaten leaves among the isolates are shown in a graphical
 138 form. Mortality and time of death of the test insects (LT₅₀) were analyzed using analysis of variance (ANOVA). Tukey's
 139 Honestly Significant Difference (HSD) Test was employed to test for significant difference among the treatments (isolates)
 140 at P = 0.05. LT₅₀ and LT₉₀ values were calculated by using probit analysis. All data were analysed using software of SAS
 141 University Edition 2.7 9.4 M5.

142

RESULTS AND DISCUSSION143 **Insecticidal activity of *Beauveria bassiana***

144 The culture filtrates of nine *B. bassiana* isolates already produced from liquid media both incubated at pH 2.5 and pH 6 showed
 145 different lethal or toxicity capabilities of *S. litura* larvae (Table 2). The culture filtrates produced from culture media pH 6 showed that
 146 the larvae mortality increased sharply from day 4 to 12, whereas at pH 2.5 the mortality of new test larvae occurred on day 9 and did not
 147 increase sharply (Figure 3). On the twelfth day after being applied with the culture filtrates incubated at pH 6 medium, the mortality of
 148 tested larvae reached 92%, while those applied with the culture filtrates incubated at pH 2.5 medium only reached 13.33%. Therefore,
 149 the pH on the culture medium of *B. bassiana* could affect the level of toxicity of the culture filtrate. On the last day of observation, the
 150 culture filtrates of nine *B. bassiana* isolates from culture medium at pH 6 showed high toxicity to isolate BPdR, BJgTs, BSmMs,
 151 BSwTd2, BSwTd4, BKKPp2 and significantly different from controls (Table 2). However, the culture filtrates of nine *B. bassiana*
 152 isolates from the culture medium at pH 2.5, all of which had lower toxicity compared to culture filtrates from culture medium at pH 6.
 153 The highest toxicity at pH 2.5 was found in BPdR isolates, BJgTs, BSmMs, BSwTd2, BSwTd3, BSwTd4, and BKKPp2. Yet, although
 154 they were cultured on a medium at pH 2.5, the isolates were still quite toxic to the test insects.

155

156 **Table 2.** Mortality of larval *Spodoptera litura* at 4, 8, 12 days after being infested with *Beauveria bassiana* culture filtrates from
 157 medium at pH 2.5 and 6

Code of isolate	Mortality of <i>Spodoptera litura</i> larvae (%)					
	4 days		8 days		12 days	
	pH 2.5	pH 6	pH 2.5	pH 6	pH 2.5	pH 6
BPdR	0.00	5.33 ^a	0.00	34.67 ^{bc}	8.00 ^b	73.33 ^b
BJgTs	0.00	5.33 ^a	0.00	46.67 ^c	6.67 ^b	92.00 ^b
BSmMs	0.00	8.00 ^b	0.00	32.00 ^{bc}	6.67 ^b	85.33 ^b
BSwTd1	0.00	1.33 ^a	0.00	22.67 ^b	0.00 ^a	46.67 ^{ab}
BSwTd2	0.00	2.67 ^a	0.00	28.00 ^{bc}	8.00 ^b	73.33 ^b
BSwTd3	0.00	2.67 ^a	0.00	26.67 ^{bc}	6.67 ^b	40.00 ^{ab}
BSwTd4	0.00	5.33 ^a	0.00	30.67 ^{bc}	13.33 ^b	65.33 ^b
BKKPp2	0.00	5.33 ^a	0.00	33.33 ^{bc}	8.00 ^b	73.33 ^b
BKbTp	0.00	0.00 ^a	0.00	25.33 ^b	0.00 ^a	48.00 ^{ab}
Kontrol	0.00	0.00 ^a	0.00	0.00 ^a	0.00 ^a	0.00 ^a
ANOVA F-value	-	3.07*	-	19.77*	8.55*	5.33*
P value (0.05)	-	0.02	-	0	0	0
Tukey's HSD test	-	15.5	-	12.8	13.3	50.2

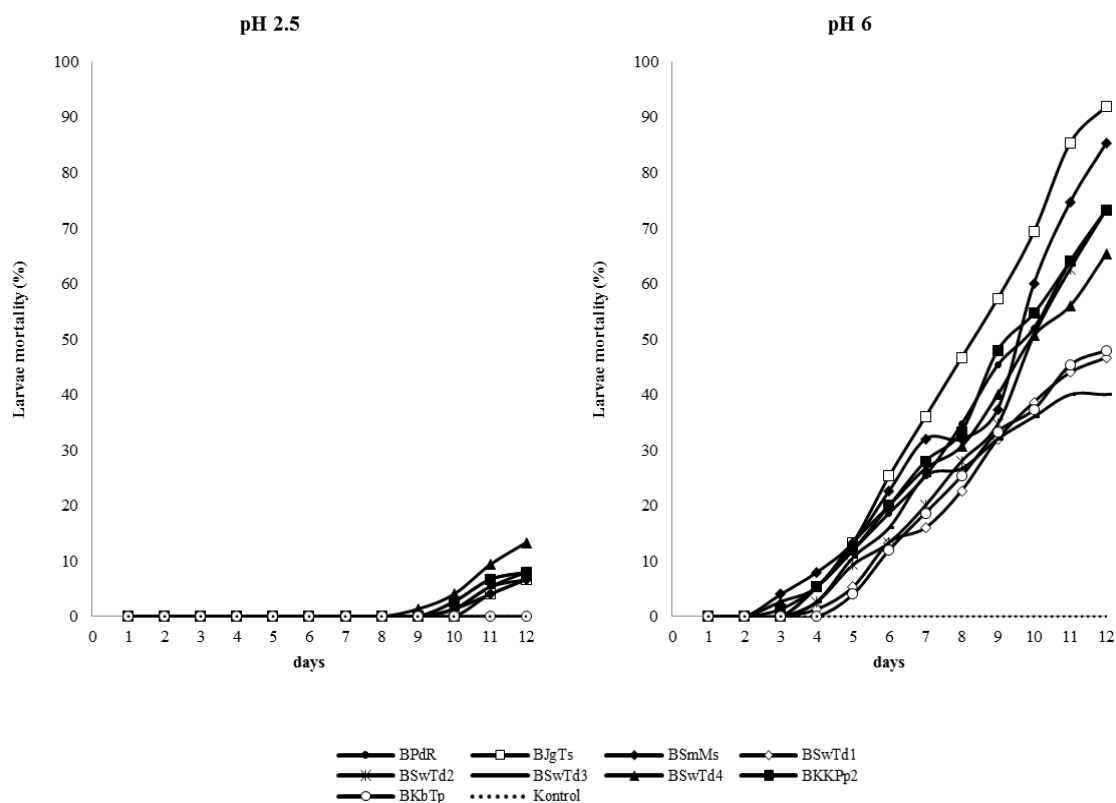
158 Note: * = significantly different; values within a column (the data of each isolate) followed by the same letters were not significantly
 159 different at $P < 0.05$ according to Tukey's HSD test. Original data were transformed using Arcsin transformation prior to statistical
 160 analysis.

161 The color of culture filtrate from culture media of pH 6 and 2.5 showed the differences (Figure 4). The color of the
 162 culture filtrate of pH 6 culture media was generally dark brown, while the pH 2.5 was light brown. The most striking color
 163 of the culture filtrate isolates of BPdR, BJgTs, BSmMs, BSwT2, BSwTd4, and BKKPp2 of the pH 6 culture media was
 164 more brown than those of pH 2.5. If these data were related to the mortality data (Table 2), the isolates which gave rise to
 165 the dark brown color of culture filtrate resulted in a higher mortality rate.
 166

167 **Table 3.** LT_{50} and LT_{95} of larval *Spodoptera litura* caused by *Beauveria bassiana* culture filtrates from medium at pH 2.5 and 6

Code of isolate	LT_{50} (days) \pm SD		LT_{90} (days) \pm SD	
	pH 2.5	pH 6	pH 2.5	pH 6
BPdR	14.83 \pm 0.44	9.71 \pm 0.81	17.35 \pm 0.53	14.11 \pm 1.38 ^{ab}
BJgTs	14.82 \pm 0.45	8.28 \pm 0.45	17.15 \pm 0.58	11.63 \pm 0.60 ^a
BSmMs	15.36 \pm 0.99	9.19 \pm 0.48	18.37 \pm 1.68	13.50 \pm 1.52 ^{ab}
BSwTd1	-	11.49 \pm 0.54	-	16.67 \pm 0.87 ^{ab}
BSwTd2	15.06 \pm 0.34	10.24 \pm 1.11	18.10 \pm 0.41	14.51 \pm 1.94 ^{ab}
BSwTd3	14.66 \pm 0.74	11.89 \pm 0.36	17.52 \pm 1.20	17.20 \pm 0.66 ^b
BSwTd4	14.05 \pm 0.17	10.03 \pm 0.48	16.76 \pm 0.44	15.03 \pm 0.37 ^{ab}
BKKPp2	14.97 \pm 0.60	9.59 \pm 0.80	17.95 \pm 1.05	14.06 \pm 1.30 ^{ab}
BKbTp	-	11.52 \pm 1.09	-	16.55 \pm 1.56 ^{ab}
Kontrol	-	-	-	-
ANOVA F-value	0.49 ^{ns}	2.72 ^{ns}	0.38 ^{ns}	2.55 [*]
P value (0.05)	0.80	0.05	0.88	0.04
Tukey's HSD test	-	-	-	6.38

168 Note: ns = not significantly different; * = significantly different; values within a column (the data of each isolate) followed by the same
 169 letters were not significantly different at $P < 0.05$ according to Tukey's HSD test. Original data were transformed using Arcsin
 170 transformation prior to statistical analysis
 171



172 **Figure 3.** Mortality of *Spodoptera litura* larvae
 173
 174
 175
 176
 177
 178
 179
 180
 181
 182
 183
 184
 185
 186
 187
 188
 189
 190
 191
 192
 193
 194
 195
 196
 197
 198
 199
 200
 201
 202
 203

204
205
206

207
208
209
210
211
212
213
214
215
216
217
218
219
220
221
222
223
224
225
226
227
228
229
230
231
232
233
234
235
236
237
238
239
240
241
242
243
244
245
246
247
248
249
250
251
252
253
254
255
256
257
258



259
260
261
262
263
264
265
266
267
268
269
270
271
272
273
274
275
276
277
278
279
280
281
282
283
284
285
286
287
288
289
290
291
292
293
294
295
296
297
298
299
300
301
302
303
304
305
306
307
308
309
310
311
312
313
314
315
316
317
318
319
320
321
322

Figure 4. *Beauveria bassiana* isolates cultured in SDA, PDB, and culture filtrate: BPdR (a), BJgTs (b), BSmMs (c), BSwTd1 (d), BSwTd2 (e), BSwTd3 (f), BSwTd4 (g), BKKPp2 (h), BKbTp (i)

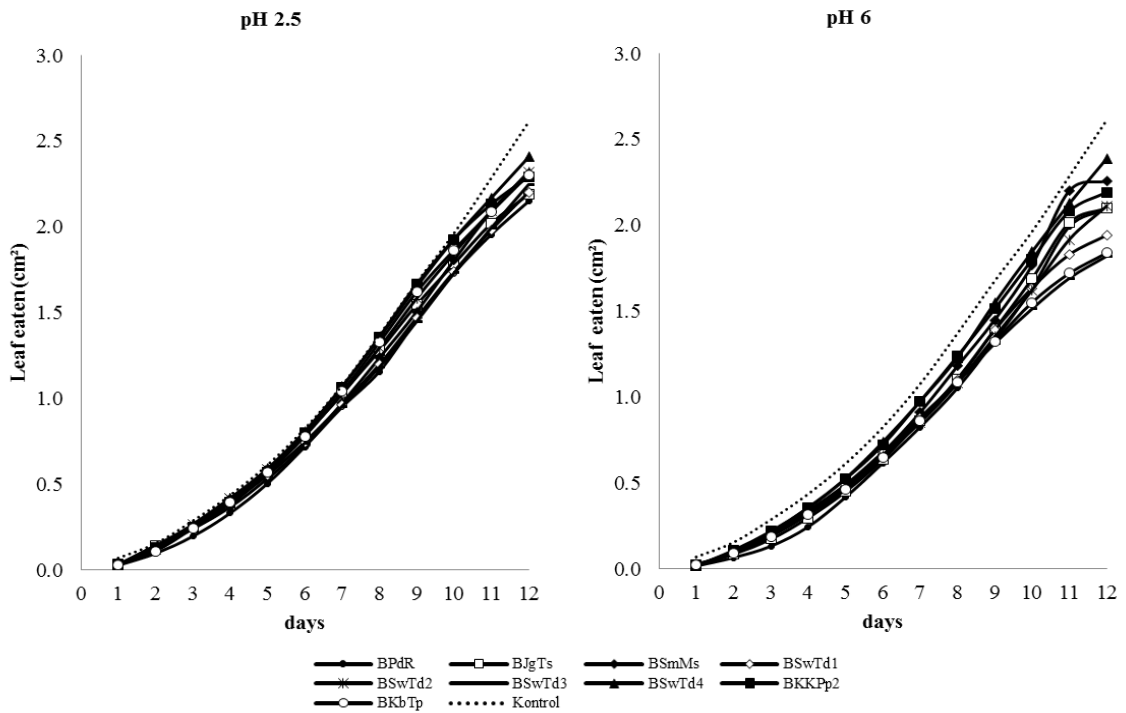


Figure 5. Leaf eaten by *Spodoptera litura*

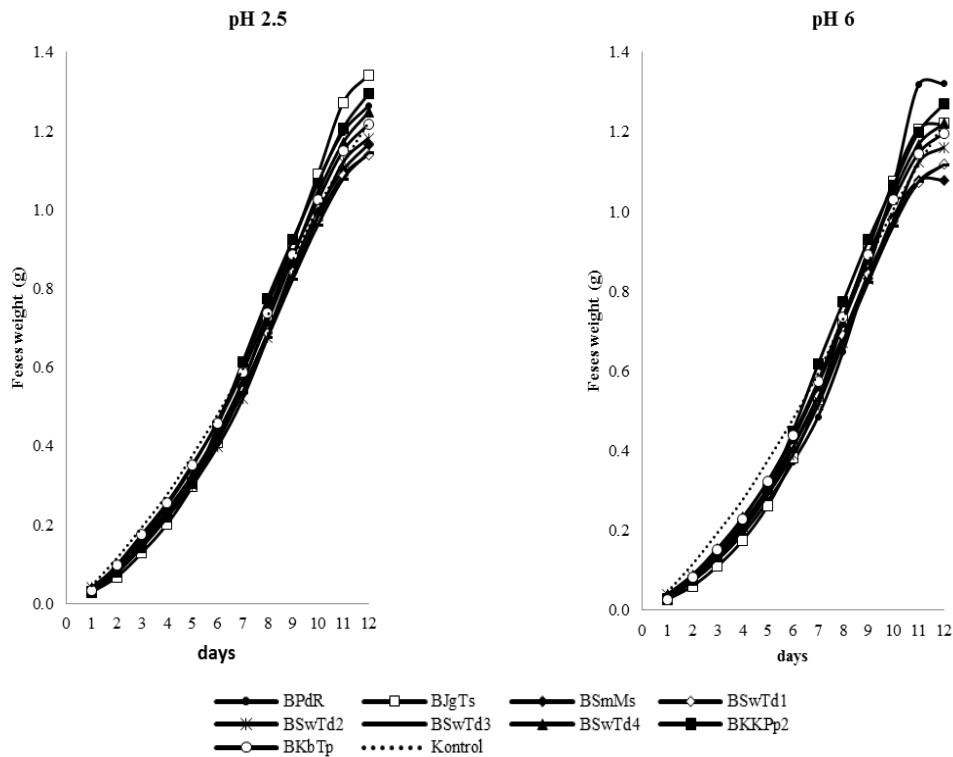


Figure 6. Weight of *Spodoptera litura* feces



Figure 7. The dead larvae of *Spodoptera litura* caused by *Beauveria bassiana* culture filtrate (a) and the healthy one (b)

After applying the culture filtrates of nine isolates of *B. bassiana* from the pH 6 medium, the LT_{50} and LT_{90} *S. litura* larvae were shorter than those of pH 2.5 (Table 3). Meanwhile, after applying the culture filtrates from the pH 6 medium, the LT_{50} *S. litura* larvae showed an effect that was not significantly different among the isolates, as well as the LT_{50} which was applied the culture filtrates of pH 2.5 medium. After applying the culture filtrates from pH 6 medium, the LT_{90} of *S. litura* larvae showed significantly different effects among the isolates. The LT_{90} was found the shortest in BJgTs isolates, while the longest one was found in BSwTd3 isolates. After applying the culture filtrates from pH 2.5 medium, the LT_{90} of *S. litura* larvae showed no significant difference among the isolates.

The effects of *Beauveria bassiana* culture filtrates on larval growth

The effects of *B. bassiana* culture filtrates from pH 6 or pH 2.5 medium on leaf eaten area (Figure 5), weight of feces (Figure 6), and weight of larvae (Figure 7) showed similar trends. The older the larvae age was, the wider the leaves were eaten, and the more weight of feces the larvae per animal becomes. The larvae fed with the controlled leaves (not applied to the culture filtrates *B. bassiana*) ate chili leaves most widely and produced most waste. The weight of all treated larvae, except the control ones, showed a tendency to begin to decline on the sixth day. After 12 days of application, the weight of the larvae treated with the culture filtrates *B. bassiana* from pH 6 medium decreased their weight sharply and the lowest weight reached below 0.5 g/head. The weight of larvae fed with the treatment of culture filtrates from pH 2.5 medium also decreased, but the lowest weight was still above 1g/head after 12 days of application. The larvae weight in the control group, both at pH 6 and pH 2.5 media, continued to increase until the end of the observation (after 12 day application).

The larvae *S. litura* applied to a culture filtrates *B. bassiana* from a pH 6 or pH 2.5 medium showed the same symptoms; 1 x 24 hours after consuming the treatment leaves, the larvae movement became less active than larvae eating the control leaves. The larvae bodies that were applied to culture filtrates of pH 6 and pH 2.5 tended to be smaller than those of the control. The dead larvae as a result of the applied culture filtrates showed symptoms such as dry, wrinkled, stiff like mummy, and dull integument body (Figure 8), and they did not smell. In addition, the mouth of the dead larvae secreted green liquid. These dead larvae were checked to find out whether their death due to *B. bassiana* spore infection or due to toxic compounds contained in the culture filtrates, by putting these dead larvae into the SDA media. After 7 days of being incubated in the SDA medium, all of the dead insects did not show the infection caused by spores of *B. bassiana*. Therefore, the death of *S. litura* larvae in this study was caused by the toxin compounds contained in the culture filtrates.

Discussion

The data showed that the culture filtrates of *B. bassiana* from the medium of PDB pH 6 caused mortality of *S. litura* larvae which was higher than the mortality resulted from the culture filtrates of the medium of PDB pH 2.5. In this study, the culture filtrate produced from the separation of liquid *B. bassiana* culture from its spores was toxic and lethal on larvae of test insects. According to (Pinnamaneni et al. 2010). The toxic culture filtrates of *B. bassiana* was caused during the incubation in liquid medium; the fungus produced exochitinase enzyme and the chitinolytic exochitinase enzyme able to degrade cuticle insects. Based on the resulting mortality, the culture filtrates of *B. bassiana* from medium of PDB pH 6 were more toxic than that of pH 2.5. The pH range for chitinase activity of *B. bassiana* was pH 4-6, and the more acidic or alkaline media culture was, the lower the activity became (Pinnamaneni et al. 2010). In addition, the pH media less than 3 are less ideal pH for the growth and viability of spora *B. bassiana* (Rizkie et al. 2017). The most ideal pH to produce the *B. bassiana* spores is the pH 5.2 (Pham et al. 2009). The liquid media with a pH less than 3 can cause a decrease in the density and viability of *B. bassiana* spores (Pham et al. 2009; Rizkie et al. 2017).

367 This study still found that the culture filtrates *B. bassiana* from PDB medium of pH 2.5 still caused deaths in test
368 larvae. The isolates of BPdR, BJgTs, BSmMs, BSwTd2, BSwTd3, BSwTd4, and BKKPp2 still caused 6.6-13.33% deaths.
369 This proves that the culture filtrates of the isolates are still toxic. Only the superior isolates are still toxic at pH below 3;
370 generally *B. bassiana* isolates are able to produce insecticidal culture filtrates if the liquid media during culture *B. bassiana*
371 has a pH of 3 and above (Cheong 2015). Six of the seven toxic isolates were those from wetland soil (peat soils, tidal
372 lowland, and freshwater swamp soil) in South Sumatra which had a pH below 3 (Safitri et al. 2018). These isolates have
373 the potential to survive as saprophytes in low pH soils. The failure of entomopathogenic fungi to survive as saprophytes in
374 acidid soils, such as soil in peatlands, tidal lowlands, and freshwater swamps spreading across Sumatra, Kalimantan, and
375 Papua can be overcome if the isolates that hold low pH results of this study are applied there.

376 In the treatment of culture filtrates of *B. bassiana* from medium of pH 6 or pH 2.5, the area of the eaten leaves
377 decreased compared to those of the controls which were given only sterile aquadest. The results of this study showed that
378 the culture of filtrates *B. bassiana* could reduce the appetite of *S. litura*. The weight of *S. litura* larvae eating the leaves
379 which were applied to the culture filtrates of *B. bassiana* from pH 6 or pH 2.5 showed a tendency on the sixth day to begin
380 to lose weight, whereas those in the control group on the sixth day until the end of the observation, the larvae weight
381 continued to rise. The decrease in the larvae weight in the culture filtrate treatment resulted from the sick larvae
382 experiencing slowdown growth. The body of the sick larvae continued to decrease in size, shrink, and dried out after they
383 died. The larvae that were sick from eating the leaves applied to culture filtrates showed a difference when compared to
384 the larvae that died from being infected with *B. bassiana* spores. According to Safitri et al. (2018) and Sumikarsih et al.
385 (2019), the larvae that died as a result of being infected with the entomopathogenic fungus spores showed symptoms such
386 as the body decreasing in size, shrinking, drying, and having no smell; however, from the host insect's body grew the
387 fungus in the form of mycelia, hyphae and spores on the surface of the integument. The non-growth of *B. bassiana* in
388 larvae of this study resulted from the loss of mycelia, hyphae, and spores in the culture filtrate. Consequently, the dead
389 larvae caused by the toxic compounds contained in the culture filtrate *B. bassiana* did not result from the infection with *B.*
390 *bassiana* spores.

391 The color of the culture filtrate of the pH 6 culture medium is more brown than the that of pH 2.5. According to Qazi
392 (2008), pH can change the color of culture filtrate because pH affects *B. bassiana* in releasing protease enzymes and
393 influencing toxin production (Sharma et al. 1992). The protease of *B. bassiana* enzyme functions to dissolve insect body
394 proteins and kill them (Mancillas-Paredes et al. 2019). The optimal pH can cause the fungus to release ammonia and
395 citrate which can increase activity of extracellular enzymes (Khachatourians et al. 2007). Therefore, the data of this study
396 showed that the isolates at pH 6 were more brown and caused mortality of *S. litura* larvae to be higher than those of pH 2.5
397 due to the more toxic culture filtrate.

398 The results of this study conclude that the culture filtrates *B. bassiana* of the liquid medium at pH 6 are more toxic
399 against the larvae of the *S. litura* than those at pH 2.5. Still, an important finding was found that the culture filtrates of
400 isolates of BPdR, BJgTs, BSmTd2, BSwTd3, BSwTd4, and BKKPp2 from pH 2.5 media still had high toxicity against the
401 larvae. These isolates have the potential to survive and settle on low pH soils. Therefore, these isolates have the
402 opportunity to be successfully utilized in low pH ecosystems, such as peatlands, tidal lowlands, and freshwater swamps in
403 Indonesia.

404 ACKNOWLEDGEMENTS

405 This research was funded by Riset Terapan (Applied Research) with budget year of 2019 according to the Director of
406 Research and Community Service, Directorate of Research and Community Service (DRPM), Directorate General for
407 Research and Development, Ministry of Research, Technology, and Higher Education, Number: T/140/E3/RA.00/2019
408 chaired by Siti Herlinda.

409 REFERENCES

- 410 Bugeme DM, Maniania NK, Knapp M, Boga HI. 2008. Effect of temperature on virulence of *Beauveria bassiana* and *Metarhizium anisopliae* isolates to
411 *Tetranychus evansi*. *Exp Appl Acarol* 46: 275–285.
- 412 Cheong P. 2015. Bioactive Metabolites of an Isolate of the Entomopathogenic Fungus *Beauveria bassiana*. Lincoln University, USA.
- 413 Dohong A, Aziz AA, Dargusch P. 2018. Carbon emissions from oil palm development on deep peat soil in Central Kalimantan Indonesia.
414 *Anthropocene* 22: 31–39.
- 415 Herlinda S. 2010. Spore density and viability of entomopathogenic fungal isolates from Indonesia, and their virulence against *Aphis gossypii* Glover
416 (Homoptera: Aphididae). *Tropical Life Sci Res* 21: 11-19.
- 417 Herlinda S, Rizkie L, Suwandi, Susilawati, Lakitan B, Verawaty M, et al. 2018a. Effects of high temperature and ultraviolet-C irradiance on conidial
418 viability and density of *Beauveria bassiana* and *Metarhizium anisopliae* isolated from soils of lowland ecosystems in Indonesia. *Eurasian J Anal*
419 *Chem* 13: 209–216.
- 420 Herlinda S, Yudha S, Thalib R, Khodijah, Suwandi, Lakitan B, et al. 2018b. Species richness and abundance of spiders inhabiting rice in fresh swamps
421 and tidal lowlands in South Sumatra, Indonesia. *J ISSAAS* 24: 82–93.
- 422 Johari A, Herlinda S, Irsan C, Pujiastuti Y. 2016. Phenomenon of Thrips (Thysanoptera) attack on chili plant (*Capsicum annum*). *Am J Agric Biol Sci*
423 11: 103–109.

- 424 Johari A, Herlinda S, Pujiastuti Y, Irsan C, Sartiami D. 2014. Morphological and genetic variation of *Thrips parvispinus* (Thysanoptera : Thripidae) in
425 chili plantation (*Capsicum annum L.*) in the lowland and highland of Jambi Province, Indonesia. *Am J Biosci.* 2: 17–21.
- 426 Kartika K, Lakitan B, Wijaya A, Kadir S, Widuri LI, Siaga E. 2018. Effects of particle size and application rate of rice-husk biochar on chemical
427 properties of tropical wetland soil, rice growth and yield. *AJCS* 12: 817–826.
- 428 Khachatourians GG, Qazi SS, Reid WR. 2007. Biochemistry and molecular biology of entomopathogenic fungi. In: Brakhage, A.A. and Zipfer, P.F.
429 (Eds.), *The Mycota VI: Human and animal relationships*. Springer-Verlag Berlin & Heidelberg, Germany, pp. 1-42.
- 430 Kodir KA, Juwita Y. 2016. Morphological characterization and inventory of local wetland rice collected from South Sumatra Province. *Bul Plasma*
431 *Nutfah* 22: 101–108.
- 432 Mancillas-Paredes JM, Hernández-Sánchez H, Jaramillo-Flores ME, and García-Gutiérrez C. 2019. Proteases and chitinases induced in *Beauveria*
433 *bassiana* during infection by *Zabrotes subfasciatus*. *Southwestern Entomologist* 44(1): 125-137.
- 434 Marlina N, Asmawati, Zairani FY, Midranisiah, Aryani I, Kalasari R. 2016. Biofertilizer utilization in increasing inorganic fertilizer efficiency and rice
435 yield at c-type flooding land of Tanjung Lago Tidal Lowland. *Int J Engg res Sci Tech* 5: 74–83.
- 436 Mulyani A, Sarwani M. 2013. The characteristic and potential of sub optimal land for agricultural development in Indonesia. *J Sumberd Lokal* 7: 47–55.
437 [Indonesia].
- 438 Pham TA, Kim JJ, Kim SG, Kim K. 2009. Production of blastospore of entomopathogenic submerged batch culture. *Mycobiology* 37: 218–224.
- 439 Pinnamaneni R, Kalidas P, Rao KRSS. 2010. Cloning and expression of Bbchit1 gene of *Beauveria bassiana*. *Open Entomol J* 4: 30–35.
- 440 Qazi SS. 2008. Regulatory role of ambient pH in the expression of pathogenicity determinant gene products of *Beauveria bassiana* and *Metarhizium*
441 *anisopliae*. [Dissertation]. University of Saskatchewan, Saskatchewan.
- 442 Rizkie L, Herlinda S, Suwandi, Irsan C, Susilawati, Lakitan B. 2017. Conidial density and viability of *Beauveria bassiana* and *Metarhizium anisopliae*
443 grown on the low-pH in vitro medium. *J HPT Trop* 17: 119–127. [Indonesia].
- 444 Safitri A, Herlinda S, Setiawan A. 2018. Entomopathogenic fungi of soils of freshwater swamps, tidal lowlands, peatlands, and highlands of South
445 Sumatra, Indonesia. *Biodiversitas* 19: 2365–2373.
- 446 Sharma S, Agarwal GP, Rajak RC. 1992. Effect of temperature, pH and light on toxin production by *Beauveria bassiana* (Bal) Vuill. *Indian J. Exp. Biol.*
447 30: 918-919.
- 448 Sumikarsih E, Herlinda S, Pujiastuti Y. 2019. Conidial density and viability of *Beauveria bassiana* isolates from Java and Sumatra and their virulence
449 against *Nilaparvata lugens* at different temperatures. *Agrivita* 41: 335–349.
- 450 Utami SNH, Maas A, Radjaguguk B, Purwanto BH. 2009. Nature on soil physical, chemical and ftr spectrophotometry of hydrophobic peat from
451 Central Kalimantan. *J Trop Soils* 14: 159–166.
- 452 Widuri LI, Lakitan B, Hasmeda M, Sodikin E, Wijaya A, Kartika K, *et al.* 2017. Relative leaf expansion rate and other leaf-related indicators for
453 detection of drought stress in chili pepper (*Capsicum annum L.*). *Aust J Crop Sci* 11: 1617–1625.
- 454

SUBMISSION CHECKLIST

Ensure that the following items are present:

The first corresponding author must be accompanied with contact details:

Give mark (X)

• E-mail address	X
• Full postal address (incl street name and number (location), city, postal code, state/province, country)	X
• Phone and facsimile numbers (incl country phone code)	X

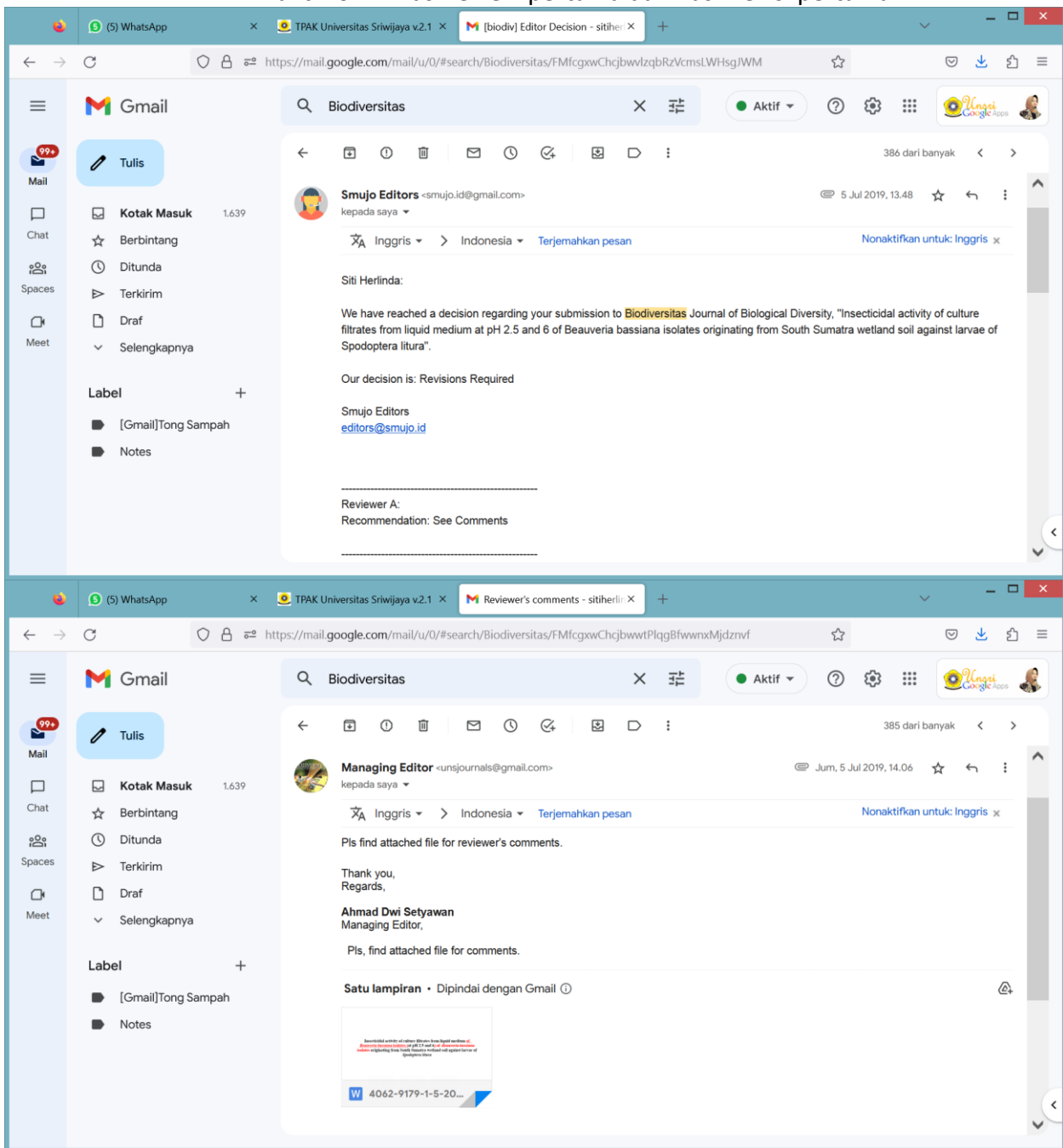
All necessary files have been uploaded, and contain:

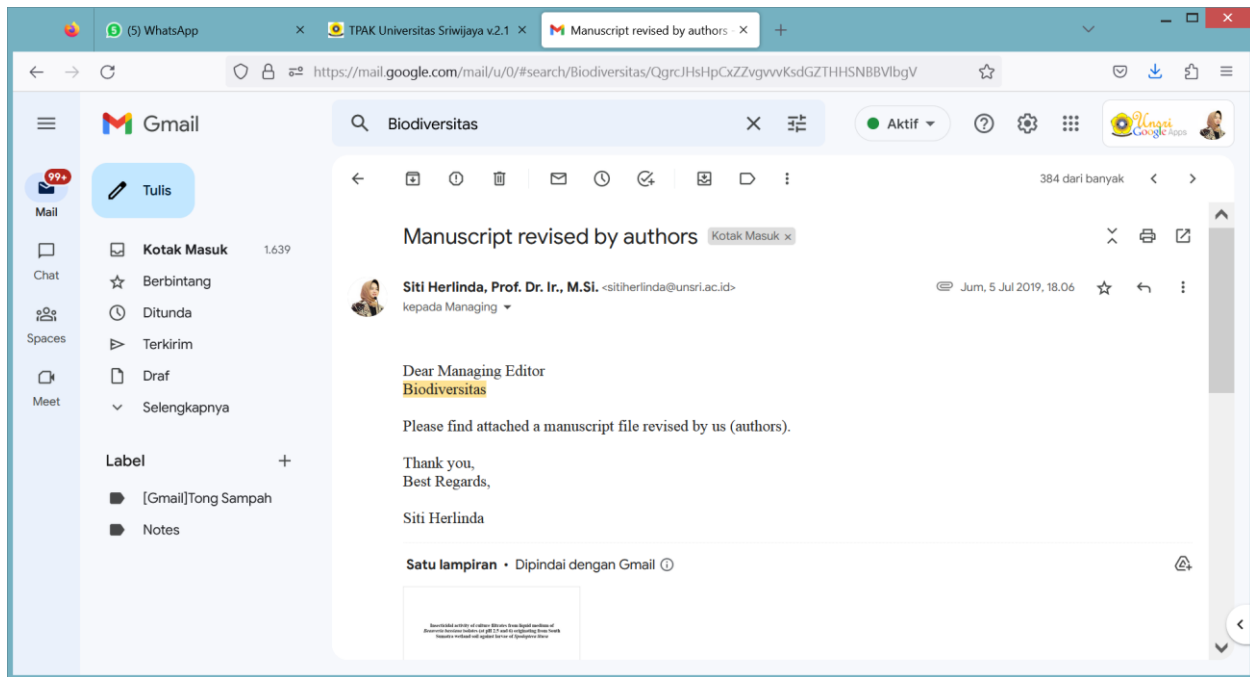
• Keywords	X
• Running titles	X
• All figure captions	X
• All tables (incl title and note/description)	X

Further considerations

• Manuscript has been “spell & grammar-checked” Better, if it is revised by a professional science editor or a native English speaker	X
• References are in the correct format for this journal	X
• All references mentioned in the Reference list are cited in the text, and vice versa	X
• Colored figures are only used if the information in the text may be losing without those images	X
• Charts (graphs and diagrams) are drawn in black and white images; use shading to differentiate	X

2. Bukti konfirmasi review pertama dan hasil revisi pertama





Insecticidal activity of culture filtrates from liquid medium of *Beauveria bassiana* isolates (at pH 2.5 and 6) originating from South Sumatra wetland soil against larvae of *Spodoptera litura*

Abstract. The obstacle in utilizing entomopathogenic fungi to control pest insects in wetlands is the inability of their isolates to survive during the saprophytic phase due to the soil being very acidic. Therefore, the exploration of fungi being able to survive in the acidic soil was utilized in the acidic ecosystem. This study aimed to test the toxic activity of *Beauveria bassiana* culture filtrates from liquid medium at pH 2.5 and 6 against *Spodoptera litura* larvae. Total ten isolates collected from South Sumatra were grown in liquid media at pH of 2.5 and 6 for six weeks. The result showed that the culture filtrate from liquid medium at pH 6 was more toxic against the larvae than that at pH 2.5. The mortality of the larvae at pH 6 reached 92%, while that at pH 2.5 it reached 13.33% only. The findings of present study revealed that the culture filtrate isolates of BPdR, BJgTs, BSwTd2, BSwTd3, BSwTd4, BKKPp2 from pH 2.5 media still caused high larvae mortality (6.67-13.33%). These seven isolates are superior due to their toxic nature at pH 2.5. Consequently, present study has increased the chances of success in utilizing these isolates for biological control in acidic ecosystems, such as peatlands, tidal lowlands, and freshwater swamps.

Key words: *Capsicum annuum*, entomopathogenic fungus, mortality, LT_{50} , LT_{90}

Running title: Insecticidal activity of *Beauveria bassiana*

INTRODUCTION

Indonesia wetlands are characterized by an ecosystem covering 9.2 million hectares of freshwater swamps, 11 million hectares of tidal lowlands, and 14.9 million hectares of peatlands and spreading in Sumatra, Kalimantan, and Papua islands

(Mulyani and Sarwani 2013). Soil of wetlands is generally submerged during certain months of the year and the difference in immersion time causes the specific plants that are planted (Safitri et al. 2018). Freshwater swamps are generally planted with rice, chili and other vegetables, and tidal lowlands are also planted with rice but more intensive (two–three indexes) compared to that of freshwater swamps (one index) (Herlinda et al. 2018b). While peatlands are rarely planted with annual crops, they are usually used for oil palm plantation (Dohong et al. 2018), forestry and conservation areas.

The Indonesia wetland soil is generally varied, particularly viewed from the aspects of soil moisture, texture, and pH. Soil texture of freshwater swamps is silt dominant (mud) which is silt sedimentation from the river flow, and contains balanced clay and sand (Kartika et al. 2018), the tidal lowlands contain silt of a mixture of river and sea water deposits, the clay and sand content remains balanced (Marlina et al. 2016), the peat soil does not contain clay, sand, and the silt contains only organic matter (Mulyani and Sarwani 2013). The freshwater swamp soil contains pH ranging from 4 to 4.5 (Kodir and Juwita, 2016), the tidal lowlands containing pH between 4.17–5.35 (Marlina et al. 2016), and in the peatlands pH ranging from 3.60–3.95 (Utami et al. 2009).

Entomopathogenic fungi are those of soil parasitizing and killing insects pest and proved superior in biological control. However, *Beauveria bassiana* and *Metarhizium anisopliae* are two examples of entomopathogenic fungi (Herlinda et al. 2018a), whose utilization is often constrained by external factors (Sumikarsih et al. 2019). *B. bassiana* is facultative parasites that can be parasitic on insects and saprophytes in soil or organic matter. Soil pH variations of each ecosystem can affect the ability of adaptation of entomopathogenic fungi as saprophytes (Bugeme et al. 2008). The too acidic pH medium, though grows both fungi, but can reduce the viability and density of conidia, even kill the fungi (Rizkie et al. 2017) and reduce the fungal biodiversity in the soil (Safitri et al. 2018). However, there are still species or isolates of the fungi conidia still survive at pH 2 (Rizkie et al. 2017). According to Pinnamaneni et al. (2010), the minimum pH 4 is generally required by *B. bassiana* which enables this fungi to produce chitinase enzymes that can kill host insects. The pH range of the culture medium used for growing *B. bassiana* under acidic is at (4.0), neutral at (7.0), and basic at (11.0) (Qazi 2008). The results of the previous studies on wetland soils in South Sumatra depicted the acidic pH potential of inoculum of *B. bassiana* and *M. anisopliae* from peat soil as compared to those of freshwater swamps and tidal lowlands (Safitri et al. 2018), yet the effectiveness of these fungi against insect pests is still unknown. The main insect pests mostly attack chili (*Capsicum annum* L.) and other specific vegetables grown in wetlands (Johari et al., 2014, 2016). Isolates of entomopathogenic fungi able to survive and still effective at extreme low pH are superior isolates that have the potential as biological agents that can be utilized and expected to survive saprophytically on the soil of the wetlands ecosystem. The objective of this research was to test the toxic activity of *B. bassiana* culture filtrates from liquid medium at pH 2.5 and 6 against the larvae of *Spodoptera litura*.

MATERIALS AND METHODS

Study area

The study was conducted at the Laboratory of Entomology, Department of Plant Pests and Diseases, Faculty of Agriculture, Universitas Sriwijaya, Indralaya from October 2018 to March 2019. The average temperature during the experiment was 29.60 °C and relative humidity was 82.34%. All *B. bassiana* isolates used in this experiment were explored from the wetlands South Sumatra, Indonesia (Figure 1) as the results of the exploration carried out by Safitri et al. (2018). In this study, the *Spodoptera litura* were selected as tested insects because they found to attack the vegetable plants commonly grown on wetlands most dominantly.

Test insect preparation

The larvae of *Spodoptera litura* were collected from chili and other vegetables grown without the application of synthetic insecticides at the Experimental Farm of the Faculty of Agriculture, Universitas Sriwijaya. Then the larvae of *S. litura* were taken to the laboratory and kept in a plastic jar (15 x 25 cm) carefully at room temperature. a chili plant was inserted into the jar to feed *S. litura* larvae which were then maintained until the second generation.

The growing larvae were transferred into another jar already provided with fresh chili everyday. Every day the larvae were moved into another jar. When the final instar larvae entered the pupa phase, they were moved into a plastic jar having been provided with soil (10 cm thick) which was already sterilized in the oven for 1 hour at 100°C. Chili plants were also provided in this jar to facilitate egg laying of *S. litura* adults which started to appear from the pupae.

The eggs were laid by the adults on the underside of the leaves. Four days later the egg colonies were transferred into other jars already provided with new fresh chili leaves to feed newly hatched larvae. The mass-rearing was carried out to obtain the second generation culture. The one day second instar larvae were used for test insects of this study.

Preparation of *Beauveria bassiana* isolates

The isolates were first made fit using a modified method of Herlinda (2010). For preparation of culture media, in 16.2 g of Sabouraud Dextrose Agar (SDA, Merck) 250 ml aquadest was added, sterilized in an autoclave for 120 minutes at a pressure of 1 atm and poured was poured into a 10 ml Petri dish (9 cm diameter) under aseptic conditions of laminar air

flow and allowed to solidify. Then *B. bassiana* was cultured on solidified culture media (SDA) along with the *Tenebrio molitor* larvae.

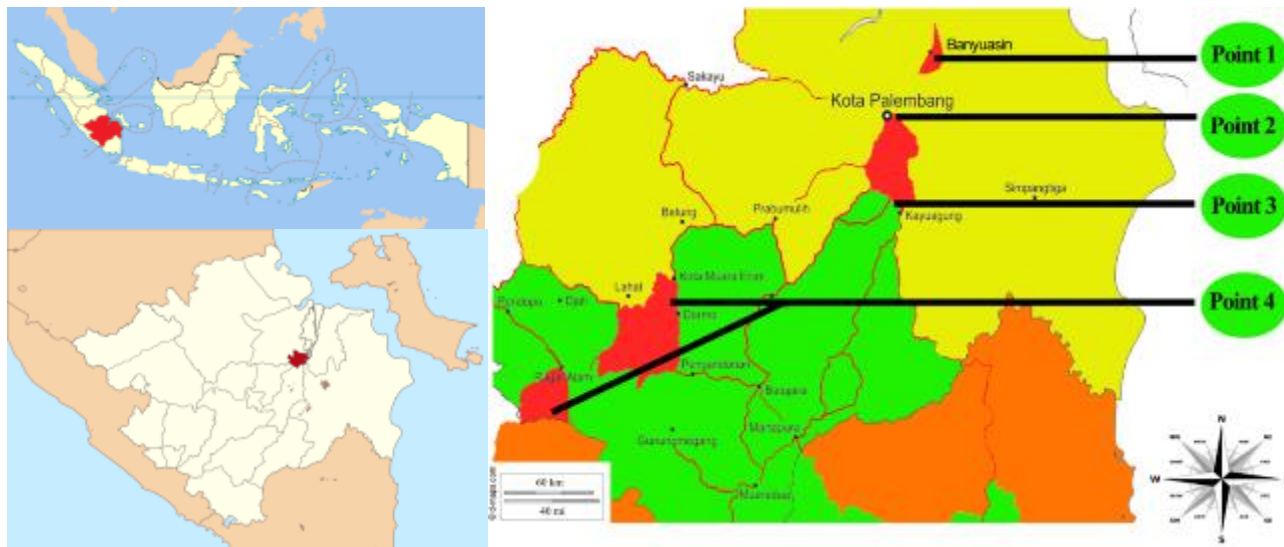


Figure 1. Locations of *Beauveria bassiana* isolates exploration from wetland soil in South Sumatra, Indonesia: point 1 = tidal lowlands, point 2 = freshwater swamps, point 3= peatlands, and point 4 = highlands (Safitri et al. 2018).

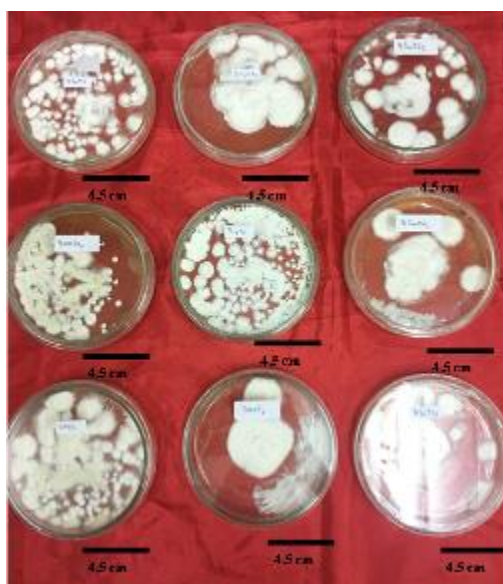


Figure 2. *Beauveria bassiana* SDA culture incubated for 7 days

Table 1. Isolates identity of *Beauveria bassiana* used in this research

Code of isolate	Ecosystems	Vegetation or crop plants	Village or city
BPdR	Freshwater swamps	Paddy	Rambutan
BJgTs	Tidal lowlands	Corn	Telang Sari
BSmMs	Tidal lowlands	Watermelon	Mulya Sari
BSwTd1	Peatlands	Oil palm	Talang Dabok
BSwTd2	Peatlands	Oil palm	Talang Dabok
BSwTd3	Peatlands	Oil palm	Talang Dabok
BSwTd4	Peatlands	Oil palm	Talang Dabok
BKKPp2	Highlands	Rubber and coffee	Pulau Pinang
BKbTp	Highlands	Cabbage	Talang Patai

Preparation of culture filtrate

About one week old isolates of entomopathogenic fungi isolated from SDA media (Figure 2) were then grown in PDB (Potato Dextrose Broth) media. The media composition of PDB consisted of 20 g dextrose monohydrate, 200 g peeled potatoes, and 1,000 ml aquadest. Before being extracted, the potatoes were first cut into cubes with a size of ± 2 cm, and boiled using 1,000 ml aquadest for 20 minutes. Then, the pH of PDB medium was regulated using the method of (Rizkie et al. 2017) by dripping the medium with 32% HCl as many as 1 to 8 drops with 10 μ l micropipette until reaching the pH 2.5. Meanwhile, to get pH 6, the PDB medium was dripped with NaOH 1 mole as many as 1 to 8 drops with 10 μ l micropipette until it reached the pH 6. Based on the consideration of the soil in the wetlands, the determination of the treatment of pH 2.5 and 6 was pH <3, whereas the pH 6 was the ideal pH for fungal growth (Qazi 2008). About 150 ml liquid medium was poured into a heat-resistant glass bottle (volume 300 ml) and sterilized into an autoclave for 120 minutes at a pressure of 1 atm. After being cooled, *B. bassiana* culture was inoculated in this PDB medium for 6 weeks.

Production of culture filtrate

Six weeks old culture broth of each *B. bassiana* isolates were then filtered to separate extracts from hyphae, mycelia, and conidia. Two stages of filtration method was adapted with slight modification (Cheong 2015). The purpose of separation from hyphae, mycelia, and conidia was to get a culture filtrate containing toxic insecticidal compounds. In first stage of filtration, 100 ml of *B. bassiana* culture on the SDB was poured into an erlenmeyer tube (volume of 500 ml) whose tube mouth was fitted with Whatman filter paper number 42 cotton-coated 1 cm thick and produced ± 70 ml coarse culture filtrate. The coarse culture filtrate was filtered using a syringe filter (0.45 μ m-25 mm) conducted in second stage filtration as follows: 1 ml of the first stage coarse culture filtrate was sucked using a hypodermic needle (volume of 6 ml) and then the needle was removed and the base of the needle was attached a syringe filter. Then the needle was attached back to the hypodermic needle and 1 ml of crude culture filtrate was filtered using a syringe filter to obtain the culture filtrate. The culture filtrates were used at a concentration of the original preparation without dilution by sterile water.

Isolates activity insecticidal test of *Beauveria bassiana*

1 ml culture filtrates obtained in second filtration was dropped onto the chili leaves; then these leaves were infested with test insects (the second instar of *S. litura* larvae) as many as 25 test insects per isolate for 6 hours and repeated three times. Before being treated, the test insects were left unfed for 2 hours and weighed using a Portable Jewelry Scale (capacity of 30 g x 0.01 g). After 6 hours of infestation and ensuring that all larvae ate the leaves moistened with the culture filtrate *B. bassiana*, the test insects were moved into a plastic cylinder (the top of which was covered with gauze) in which there were 5 new chili leaves (without culture filtrate of *B. bassiana*). Every 1 x 24 hours the dead larvae were recorded and the chili leaves were replaced and the area of the eaten leaves, the weight of the feces, and the larvae body weight were measured. The observations of these variables were carried out for 12 days.

To measure the percentage of the foliar damage area caused by the insects, a bioleaf application as given by Machado et al. (2016) was used. The area of chili leaves before being eaten was measured using the formula of Widuri et al. (2017) as follows:

$$ILD = 0.606 \times P \times L$$

ILD = Index of leaf area (cm²); P = leaf length; L = leaf width

Defoliation is the percentage of leaves eaten by the insects. Defoliation was measured using the following formula:

$$LDD = D \times ILD$$

LDD = area of eaten leaves; D = Defoliation

Data analysis

Differences in data on body weight and feces, and the area of eaten leaves among the isolates are shown in a graphical form. Mortality and time of death of the test insects (LT₅₀) were analyzed using analysis of variance (ANOVA). Tukey's Honestly Significant Difference (HSD) Test was employed to test for significant difference among the treatments (isolates) at P = 0.05. LT₅₀ and LT₉₀ values were calculated by using probit analysis. All data were analysed using software of SAS University Edition 2.7 9.4 M5.

RESULTS AND DISCUSSION

Insecticidal activity of *Beauveria bassiana*

The culture filtrates of nine *B. bassiana* isolates already produced from liquid media both incubated at pH 2.5 and pH 6 showed different lethal or toxicity capabilities towards *S. litura* larvae (Table 2). The culture filtrates produced from culture media with pH 6 showed that the larvae mortality increased sharply from day 4 to 12, whereas at pH 2.5 the mortality of new test larvae occurred on day 9 and did not increase sharply (Figure 3). On the twelfth day after being applied with the culture filtrates incubated at pH 6 medium, the mortality of tested larvae reached 92%, while those applied with the culture filtrates incubated at pH 2.5 medium only reached 13.33%. Therefore, the pH on the culture medium of *B. bassiana* could affect the level of toxicity of the culture filtrate. On the last day of

observation, the culture filtrates of nine *B. bassiana* isolates from culture medium at pH 6 showed high toxicity to isolate BPdR, BJgTs, BSmMs, BSwTd2, BSwTd4, BKKPp2 and significantly different from controls (Table 2). However, the culture filtrates of nine *B. bassiana* isolates from the culture medium at pH 2.5, all of which had lower toxicity compared to culture filtrates from culture medium at pH 6. The highest toxicity at pH 2.5 was found in BPdR isolates, BJgTs, BSmMs, BSwTd2, BSwTd3, BSwTd4, and BKKPp2. Yet, although they were cultured on a medium at pH 2.5, the isolates were still quite toxic to the test insects.

Table 2. Mortality of larval *Spodoptera litura* at 4, 8, 12 days after being infested with *Beauveria bassiana* culture filtrates from medium at pH 2.5 and 6

Code of isolate	Mortality of <i>Spodoptera litura</i> larvae (%)					
	4 days		8 days		12 days	
	pH 2.5	pH 6	pH 2.5	pH 6	pH 2.5	pH 6
BPdR	0.00	5.33 ^a	0.00	34.67 ^{bc}	8.00 ^b	73.33 ^b
BJgTs	0.00	5.33 ^a	0.00	46.67 ^c	6.67 ^b	92.00 ^b
BSmMs	0.00	8.00 ^b	0.00	32.00 ^{bc}	6.67 ^b	85.33 ^b
BSwTd1	0.00	1.33 ^a	0.00	22.67 ^b	0.00 ^a	46.67 ^{ab}
BSwTd2	0.00	2.67 ^a	0.00	28.00 ^{bc}	8.00 ^b	73.33 ^b
BSwTd3	0.00	2.67 ^a	0.00	26.67 ^{bc}	6.67 ^b	40.00 ^{ab}
BSwTd4	0.00	5.33 ^a	0.00	30.67 ^{bc}	13.33 ^b	65.33 ^b
BKKPp2	0.00	5.33 ^a	0.00	33.33 ^{bc}	8.00 ^b	73.33 ^b
BKbTp	0.00	0.00 ^a	0.00	25.33 ^b	0.00 ^a	48.00 ^{ab}
Kontrol	0.00	0.00 ^a	0.00	0.00 ^a	0.00 ^a	0.00 ^a
ANOVA F-value	-	3.07 [*]	-	19.77 [*]	8.55 [*]	5.33 [*]
P value (0.05)	-	0.02	-	0	0	0
Tukey's HSD test	-	15.5	-	12.8	13.3	50.2

Note: * = significantly different; values within a column (the data of each isolate) followed by the same letters were not significantly different at $P < 0.05$ according to Tukey's HSD test. Original data were transformed using Arcsin transformation prior to statistical analysis.

The color of culture filtrate from culture media with pH 6 and 2.5 also showed significant differences (Figure 4). The color of the culture filtrate of pH 6 culture media was generally dark brown, while the pH 2.5 was light brown. The most striking color of the culture filtrate isolates of BPdR, BJgTs, BSmMs, BSwT2, BSwTd4, and BKKPp2 of the pH 6 culture media was more brown than those of pH 2.5. If these data were related to the mortality data (Table 2), the isolates which gave rise to the dark brown color of culture filtrate resulted in a higher mortality rate.

Table 3. LT_{50} and LT_{95} of larval *Spodoptera litura* caused by *Beauveria bassiana* culture filtrates from medium at pH 2.5 and 6

Code of isolate	LT_{50} (days) \pm SD		LT_{90} (days) \pm SD	
	pH 2.5	pH 6	pH 2.5	pH 6
BPdR	14.83 \pm 0.44	9.71 \pm 0.81	17.35 \pm 0.53	14.11 \pm 1.38 ^{ab}
BJgTs	14.82 \pm 0.45	8.28 \pm 0.45	17.15 \pm 0.58	11.63 \pm 0.60 ^a
BSmMs	15.36 \pm 0.99	9.19 \pm 0.48	18.37 \pm 1.68	13.50 \pm 1.52 ^{ab}
BSwTd1	-	11.49 \pm 0.54	-	16.67 \pm 0.87 ^{ab}
BSwTd2	15.06 \pm 0.34	10.24 \pm 1.11	18.10 \pm 0.41	14.51 \pm 1.94 ^{ab}
BSwTd3	14.66 \pm 0.74	11.89 \pm 0.36	17.52 \pm 1.20	17.20 \pm 0.66 ^b
BSwTd4	14.05 \pm 0.17	10.03 \pm 0.48	16.76 \pm 0.44	15.03 \pm 0.37 ^{ab}
BKKPp2	14.97 \pm 0.60	9.59 \pm 0.80	17.95 \pm 1.05	14.06 \pm 1.30 ^{ab}
BKbTp	-	11.52 \pm 1.09	-	16.55 \pm 1.56 ^{ab}
Kontrol	-	-	-	-
ANOVA F-value	0.49 ^{ns}	2.72 ^{ns}	0.38 ^{ns}	2.55 [*]
P value (0.05)	0.80	0.05	0.88	0.04
Tukey's HSD test	-	-	-	6.38

Note: ns = not significantly different; * = significantly different; values within a column (the data of each isolate) followed by the same letters were not significantly different at $P < 0.05$ according to Tukey's HSD test. Original data were transformed using Arcsin transformation prior to statistical analysis

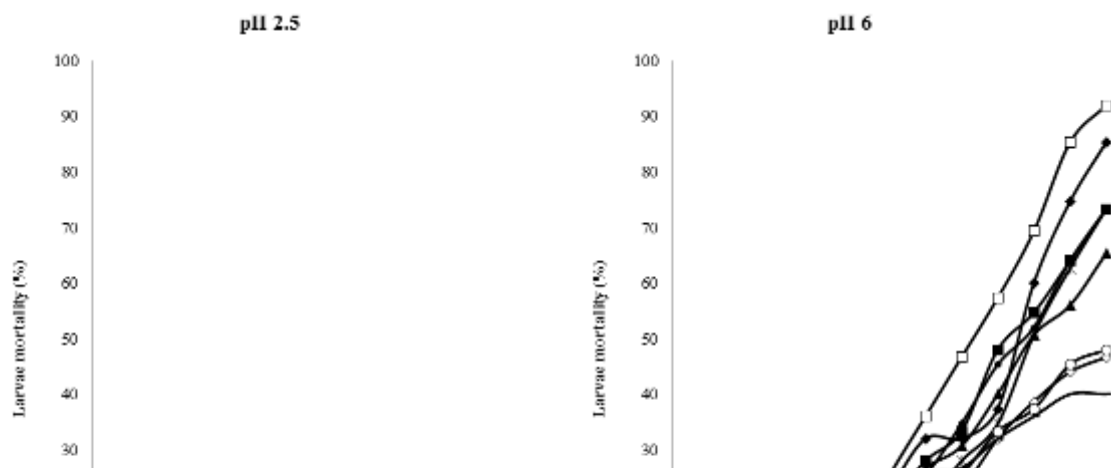


Figure 3. Mortality of *Spodoptera litura* larvae



Figure 4. *Beauveria bassiana* isolates cultured in SDA, PDB, and culture filtrate: BPdR (a), BJgTs (b), BSmMs (c), BSwTd1 (d), BSwTd2 (e), BSwTd3 (f), BSwTd4 (g), BKKPp2 (h), BKbTp (i)

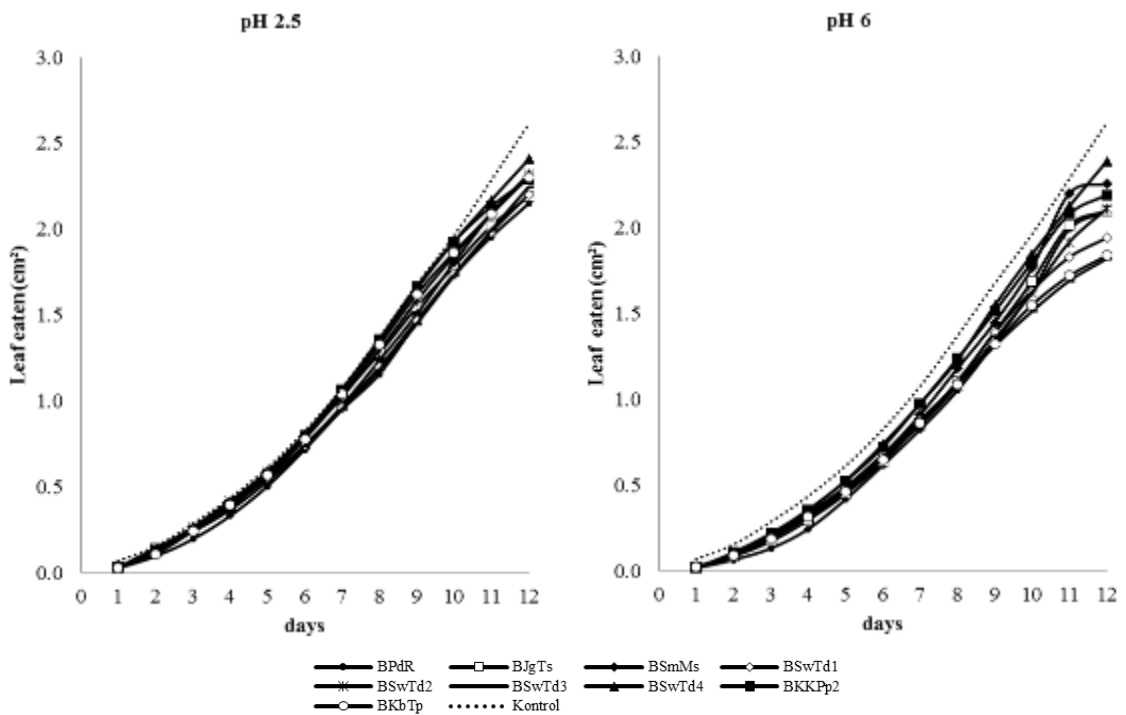


Figure 5. Leaf eaten by *Spodoptera litura*

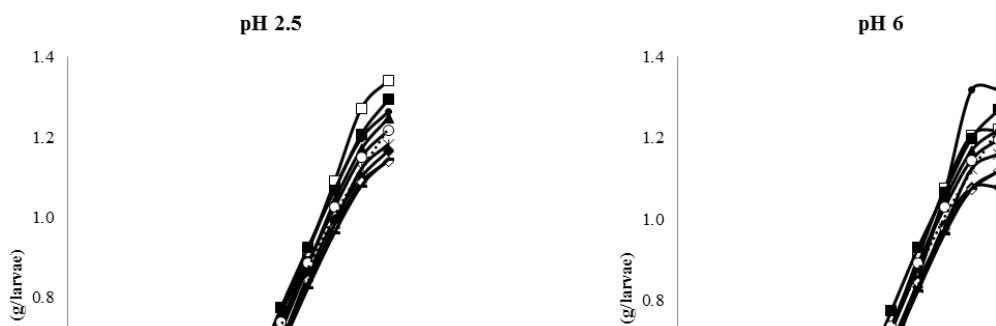


Figure 6. Weight of *Spodoptera litura* feces



Figure 7. The dead larvae of *Spodoptera litura* caused by *Beauveria bassiana* culture filtrate (a) and the healthy one (b)

After applying the culture filtrates of nine isolates of *B. bassiana* from the pH 6 medium, the LT_{50} and LT_{90} *S. litura* larvae were shorter than those of pH 2.5 (Table 3). Meanwhile, after applying the culture filtrates from the pH 6 medium, the LT_{50} *S. litura* larvae showed an effect that was not significantly different among the isolates, as well as the LT_{50} which was applied the culture filtrates of pH 2.5 medium. After applying the culture filtrates from pH 6 medium, the LT_{90} of *S. litura* larvae showed significantly different effects among the isolates. The LT_{90} was found the shortest in BJTgT isolates, while the longest one was found in BSwTd3 isolates. After applying the culture filtrates from pH 2.5 medium, the LT_{90} of *S. litura* larvae showed no significant difference among the isolates.

The effects of *Beauveria bassiana* culture filtrates on larval growth

The results of effects of *B. bassiana* culture filtrates from pH 6 or pH 2.5 medium on leaf eaten area (Figure 5) revealed that weight of feces (Figure 6), and weight of larvae (Figure 7) showed similar trends. The older the larvae age was, the wider the leaves were eaten, and the more weight of feces the larvae per animal becomes. The larvae fed with the controlled leaves (not applied to the culture filtrates *B. bassiana*) ate chili leaves most widely and produced most waste. The weight of all treated larvae, except the control ones, showed a tendency to begin to decline on the sixth day. After 12 days of application, the weight of the larvae treated with the culture filtrates *B. bassiana* from pH 6 medium decreased

their weight sharply and the lowest weight reached below 0.5 g/head. The weight of larvae fed with the treatment of culture filtrates from pH 2.5 medium also decreased, but the lowest weight was still above 1g/head after 12 days of application. The larvae weight in the control group, both at pH 6 and pH 2.5 media, continued to increase until the end of the observation (after 12 day application).

The larvae of *S. litura* applied to a culture filtrates *B. bassiana* from a pH 6 or pH 2.5 medium showed the same symptoms; 1 x 24 hours after consuming the treatment leaves, the larvae movement became less active as compare to larvae ate the control leaves. The larvae bodies that were applied to culture filtrates of pH 6 and pH 2.5 tended to be smaller than those of the control. The dead larvae as a result of the applied culture filtrates showed symptoms such as dry, wrinkled, stiff like mummy, and dull integument body (Figure 8), and they did not smell. In addition, the mouth of the dead larvae secreted green liquid. These dead larvae were checked to find out whether their death due to *B. bassiana* spore infection or due to toxic compounds contained in the culture filtrates, by putting these dead larvae into the SDA media. After 7 days of being incubated in the SDA medium, all of the dead insects did not show the infection caused by spores of *B. bassiana*. Therefore, the death of *S. litura* larvae in this study was caused by the toxin compounds contained in the culture filtrates.

Discussion

The data showed that the culture filtrates of *B. bassiana* from PDB with pH 6 caused mortality of *S. litura* larvae which was higher than the mortality resulted from the culture filtrates of PDB at pH 2.5. In this study, the culture filtrate produced from the separation of liquid *B. bassiana* culture from its spores was toxic and lethal on larvae of test insects. According to Pinnamaneni et al. (2010) incubation of test fungi in liquid medium produces exochitinase enzyme and the chitinolytic exochitinase enzyme, able to degrade cuticle insects. Based on the resulting mortality, the culture filtrates of *B. bassiana* from medium of PDB (pH 6) were more toxic than that of with pH 2.5. The pH range for chitinase activity of *B. bassiana* was pH 4-6. More acidic or alkaline nature lowers the activity of culture media. (Pinnamaneni et al. 2010). In addition, the pH of culture media less than 3 is less ideal for the growth and viability of spores of *B. bassiana* (Rizkie et al. 2017). The most ideal pH to produce the *B. bassiana* spores is the pH 5.2 (Pham et al. 2009). The liquid media with a pH less than 3 can cause a decrease in the density and viability of *B. bassiana* spores (Pham et al. 2009; Rizkie et al. 2017).

This study found that the culture filtrates of *B. bassiana* derived from PDB medium of pH 2.5 were still cause deaths in test larvae. The isolates of BPdR, BJgTs, BSmMs, BSwTd2, BSwTd3, BSwTd4, and BKKPp2 still caused 6.6-13.33% deaths. This proves that the culture filtrates of the isolates are still toxic. Only the superior isolates are still toxic at pH below 3; generally *B. bassiana* isolates are able to produce insecticidal culture filtrates if the liquid media during culture *B. bassiana* has a pH of 3 and above (Cheong 2015). Six of the seven toxic isolates were those from wetland soil (peat soils, tidal lowland, and freshwater swamp soil) in South Sumatra which had a pH below 3 (Safitri et al. 2018), have the potential to survive as saprophytes in low pH soils. The failure of entomopathogenic fungi to survive as saprophytes in acid soils, such as soil in peatlands, tidal lowlands, and freshwater swamps spreading across Sumatra, Kalimantan, and Papua can be overcome if the isolates that hold low pH results of this study applied over there.

In the treatment with culture filtrates of *B. bassiana* from medium of pH 6 or pH 2.5, the area of the eaten leaves decreased as compared to those of the controls which were given only sterile aquadest. The results of this study showed that the culture filtrates of *B. bassiana* could reduce the appetite of *S. litura*. The weight of *S. litura* larvae eating the leaves which were applied with culture filtrates of *B. bassiana* from pH 6 or pH 2.5 showed a tendency to lose weight on the sixth day, whereas those in the control group on the sixth day until the end of the observation, the larvae weight continued to rise. The decrease in the larvae weight in the culture filtrate treatment resulted from the sick larvae experiencing slowdown growth. The body of the sick larvae continued to decrease in size, shrink, and dried out and finally they died. The larvae that were sick from eating the leaves applied to culture filtrates showed a difference when compared to the larvae that died from being infected with *B. bassiana* spores. According to Safitri et al. (2018) and Sumikarsih et al. (2019), the larvae that died as a result of being infected with the entomopathogenic fungus spores showed symptoms such as the body decreasing in size, shrinking, drying, and having no smell; however, from the host insect's body grew the fungus in the form of mycelia, hyphae and spores on the surface of the integument. The non-growth of *B. bassiana* in larvae of this study resulted from the loss of mycelia, hyphae, and spores in the culture filtrate. Consequently, the death of larvae caused by the toxic compounds contained in the culture filtrate *B. bassiana* did not result from the infection with *B. bassiana* spores.

The color of the culture filtrate at pH 6 culture medium was more brown than the that of pH 2.5. According to Qazi (2008), pH can change the color of culture filtrate because it affects *B. bassiana* in releasing protease enzymes and influencing toxin production (Sharma et al. 1992). The protease of *B. bassiana* enzyme functions to dissolve insect body proteins and kill them (Mancillas-Paredes et al. 2019). The optimal pH can cause the fungus to release ammonia and citrate which can increase activity of extracellular enzymes (Khachatourians et al. 2007). Therefore, the data of this study showed that the isolates at pH 6 were more brown and caused mortality of *S. litura* larvae to be higher than those of pH 2.5 due to the more toxic culture filtrate.

The results of this study conclude that the culture filtrates *B. bassiana* of the liquid medium at pH 6 are more toxic against the larvae of the *S. litura* than those at pH 2.5. Still, an important finding was found that the culture filtrates of isolates of BPdR, BJgTs, BSmTd2, BSwTd3, BSwTd4, and BKKPp2 from pH 2.5 media still had high toxicity against the

larvae. These isolates have the potential to survive and settle on low pH soils. Therefore, these isolates have the opportunity to be successfully utilized in low pH ecosystems, such as peatlands, tidal lowlands, and freshwater swamps in Indonesia.

ACKNOWLEDGEMENTS

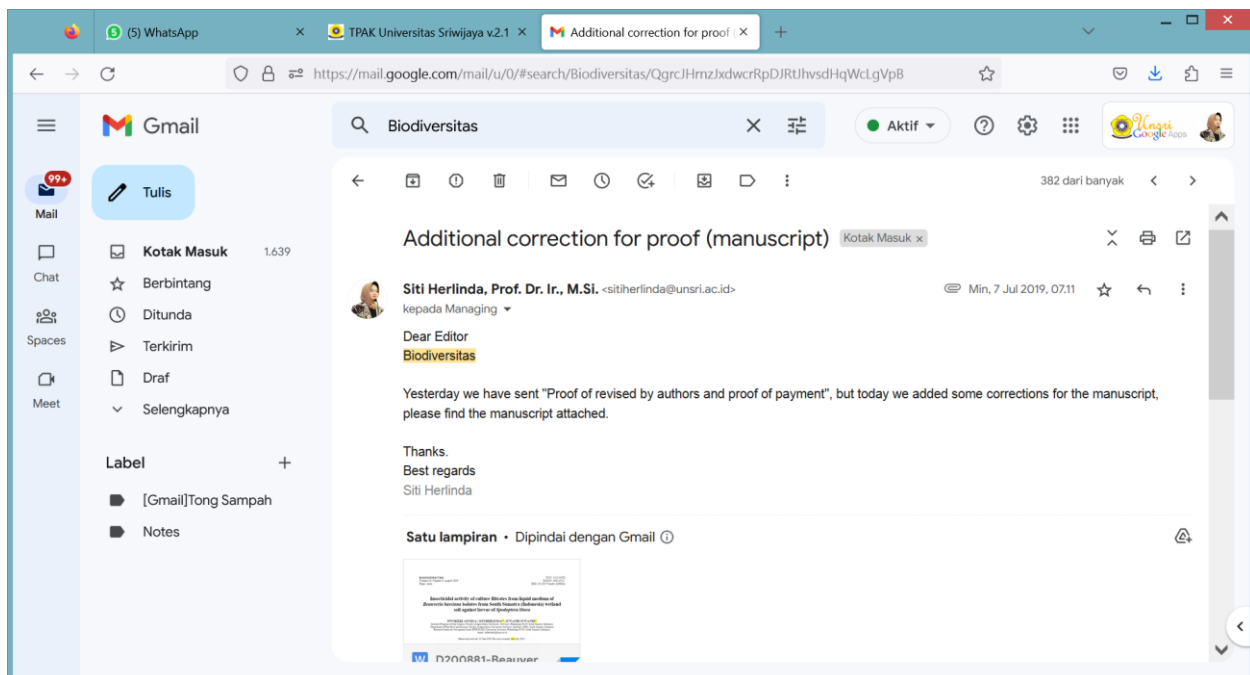
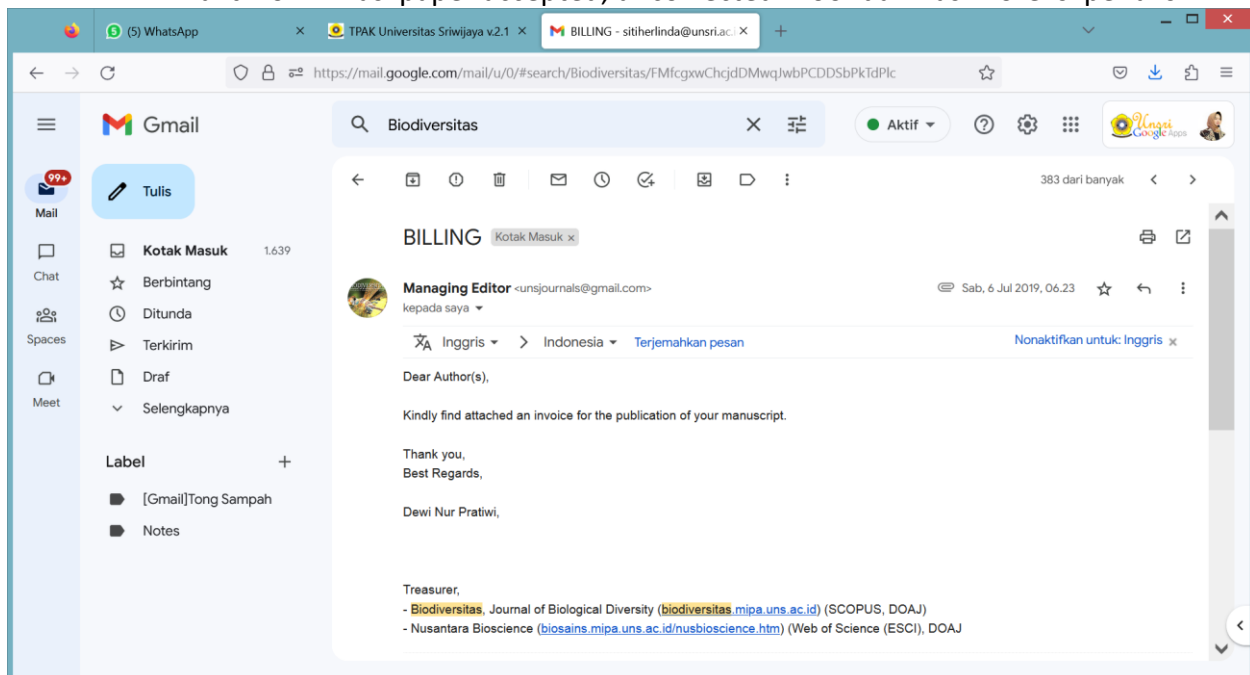
This research was funded by Riset Terapan (Applied Research) with budget year of 2019 according to the Director of Research and Community Service, Directorate of Research and Community Service (DRPM), Directorate General for Research and Development, Ministry of Research, Technology, and Higher Education, Contract Number: 211/SP2H/LT/DRPM/IV/2019 chaired by Siti Herlinda.

REFERENCES

- Bugeme DM, Maniania NK, Knapp M, Boga HI. 2008. Effect of temperature on virulence of *Beauveria bassiana* and *Metarhizium anisopliae* isolates to *Tetranychus evansi*. *Exp Appl Acarol* 46: 275–285.
- Cheong P. 2015. Bioactive Metabolites of an Isolate of the Entomopathogenic Fungus *Beauveria bassiana*. Lincoln University, USA.
- Dohong A, Aziz AA, Dargusch P. 2018. Carbon emissions from oil palm development on deep peat soil in Central Kalimantan Indonesia. *Anthropocene* 22: 31–39.
- Herlinda S. 2010. Spore density and viability of entomopathogenic fungal isolates from Indonesia, and their virulence against *Aphis gossypii* Glover (Homoptera: Aphididae). *Tropical Life Sci Res* 21: 11-19.
- Herlinda S, Rizkie L, Suwandi, Susilawati, Lakitan B, Verawaty M, et al. 2018a. Effects of high temperature and ultraviolet-C irradiance on conidial viability and density of *Beauveria bassiana* and *Metarhizium anisopliae* isolated from soils of lowland ecosystems in Indonesia. *Eurasian J Anal Chem* 13: 209–216.
- Herlinda S, Yudha S, Thalib R, Khodijah, Suwandi, Lakitan B, et al. 2018b. Species richness and abundance of spiders inhabiting rice in fresh swamps and tidal lowlands in South Sumatra, Indonesia. *J ISSAAS* 24: 82–93.
- Johari A, Herlinda S, Irsan C, Pujiastuti Y. 2016. Phenomenon of Thrips (Thysanoptera) attack on chili plant (*Capsicum annuum*). *Am J Agric Biol Sci* 11: 103–109.
- Johari A, Herlinda S, Pujiastuti Y, Irsan C, Sartiami D. 2014. Morphological and genetic variation of *Thrips parvispinus* (Thysanoptera : Thripidae) in chili plantation (*Capsicum annuum* L.) in the lowland and highland of Jambi Province, Indonesia. *Am J Biosci*. 2: 17–21.
- Kartika K, Lakitan B, Wijaya A, Kadir S, Widuri LI, Siaga E. 2018. Effects of particle size and application rate of rice-husk biochar on chemical properties of tropical wetland soil, rice growth and yield. *AJCS* 12: 817–826.
- Khachatourians GG, Qazi SS, Reid WR. 2007. Biochemistry and molecular biology of entomopathogenic fungi. In: Brakhage, A.A. and Zipfer, P.F. (Eds.), *The Mycota VI: Human and animal relationships*. Springer-Verlag Berlin & Heidelberg, Germany, pp. 1-42.
- Kodir KA, Juwita Y. 2016. Morphological characterization and inventory of local wetland rice collected from South Sumatra Province. *Bul Plasma Nutfah* 22: 101–108.
- Mancillas-Paredes JM, Hernández-Sánchez H, Jaramillo-Flores ME, and García-Gutiérrez C. 2019. Proteases and chitinases induced in *Beauveria bassiana* during infection by *Zabrotes subfasciatus*. *Southwestern Entomologist* 44(1): 125-137.
- Marlina N, Asmawati, Zairani FY, Midranisiah, Aryani I, Kalasari R. 2016. Biofertilizer utilization in increasing inorganic fertilizer efficiency and rice yield at c-type flooding land of Tanjung Lago Tidal Lowland. *Int J Engg res Sci Tech* 5: 74–83.
- Mulyani A, Sarwani M. 2013. The characteristic and potential of sub optimal land for agricultural development in Indonesia. *J Sumberd Lokal* 7: 47–55. [Indonesia].
- Pham TA, Kim JJ, Kim SG, Kim K. 2009. Production of blastospore of entomopathogenic submerged batch culture. *Mycobiology* 37: 218–224.
- Pinnamaneni R, Kalidas P, Rao KRSS. 2010. Cloning and expression of Bbchit1 gene of *Beauveria bassiana*. *Open Entomol J* 4: 30–35.
- Qazi SS. 2008. Regulatory role of ambient pH in the expression of pathogenicity determinant gene products of *Beauveria bassiana* and *Metarhizium anisopliae*. [Dissertation]. University of Saskatchewan, Saskatchewan.
- Rizkie L, Herlinda S, Suwandi, Irsan C, Susilawati, Lakitan B. 2017. Conidial density and viability of *Beauveria bassiana* and *Metarhizium anisopliae* grown on the low-pH in vitro medium. *J HPT Trop* 17: 119–127. [Indonesia].
- Safitri A, Herlinda S, Setiawan A. 2018. Entomopathogenic fungi of soils of freshwater swamps, tidal lowlands, peatlands, and highlands of South Sumatra, Indonesia. *Biodiversitas* 19: 2365–2373.
- Sharma S, Agarwal GP, Rajak RC. 1992. Effect of temperature, pH and light on toxin production by *Beauveria bassiana* (Bal) Vuill. *Indian J. Exp. Biol.* 30: 918-919.

- Sumikarsih E, Herlinda S, Pujiastuti Y. 2019. Conidial density and viability of *Beauveria bassiana* isolates from Java and Sumatra and their virulence against *Nilaparvata lugens* at different temperatures. *Agrivita* 41: 335–349.
- Utami SNH, Maas A, Radjagukguk B, Purwanto BH. 2009. Nature on soil physical, chemical and ftir spectrophotometry of hydrophobic peat from Central Kalimantan. *J Trop Soils* 14: 159–166.
- Widuri LI, Lakitan B, Hasmeda M, Sodikin E, Wijaya A, Kartika K, *et al.* 2017. Relative leaf expansion rate and other leaf-related indicators for detection of drought stress in chili pepper (*Capsicum annuum* L.). *Aust J Crop Sci* 11: 1617–1625.

4. Bukti konfirmasi paper accepted, uncorrected Proof dan hasil koreksi penulis



Insecticidal activity of culture filtrates from liquid medium of *Beauveria bassiana* isolates from South Sumatra (Indonesia) wetland soil against larvae of *Spodoptera litura*

DWI RIZKI AYUDYA¹, SITI HERLINDA^{2,3}✉, SUWANDI SUWANDI^{2,3}

¹Graduate Program of Crop Sciences, Faculty of Agriculture, Universitas Sriwijaya. Palembang 30139, South Sumatra, Indonesia

²Department of Plant Pests and Diseases, Faculty of Agriculture, Universitas Sriwijaya. Indralaya 30662, South Sumatra, Indonesia

³Research Center for Sub-optimal Lands (PUR-PLSO), Universitas Sriwijaya. Palembang 30139, South Sumatra, Indonesia

✉email: sitiherlinda@unsri.ac.id

Manuscript received: 22 June 2019. Revision accepted: xxx July 2019.

Abstract. Ayudya DR, Herlinda S, Suwandi S. 2019. *Insecticidal activity of culture filtrates from liquid medium of Beauveria bassiana isolates from South Sumatra (Indonesia) wetland soil against larvae of Spodoptera litura*. *Biodiversitas* 20: xxx. The obstacle in utilizing entomopathogenic fungi to control pest insects in wetlands is the inability of their isolates to survive during the saprophytic phase due to the soil being very acidic. Therefore, the exploration of fungi being able to survive in the acidic soil was utilized in the acidic ecosystem. This study aimed to test the toxic activity of *Beauveria bassiana* culture filtrates from liquid medium at pH 2.5 and 6 against *Spodoptera litura* larvae. Total of ten isolates collected from South Sumatra, Indonesia was grown in liquid media at pH of 2.5 and 6 for six weeks. The result showed that the culture filtrate from liquid medium at pH 6 was more toxic against the larvae than that at pH 2.5. The mortality of the larvae at pH 6 reached 92%, while that at pH 2.5 it reached 13.33% only. The findings of present study revealed that the culture filtrate isolates of BPdR, BJgTs, BSwTd2, BSwTd3, BSwTd4, BKKPp2 from pH 2.5 media still caused high larvae mortality (6.67-13.33%). These seven isolates are superior due to their toxic nature at pH 2.5. Consequently, present study has increased the chances of success in utilizing these isolates for biological control in acidic ecosystems, such as peatlands, tidal lowlands, and freshwater swamps.

Keywords: *Capsicum annuum*, entomopathogenic fungus, mortality, LT₅₀, LT₉₀

INTRODUCTION

Indonesia wetlands are characterized by an ecosystem covering 9.2 million hectares of freshwater swamps, 11 million hectares of tidal lowlands, and 14.9 million hectares of peatlands and spreading in Sumatra, Kalimantan, and Papua islands (Mulyani and Sarwani 2013). Soil of wetlands is generally submerged during certain months of the year and the difference in immersion time causes the specific plants that are planted (Safitri et al. 2018). Freshwater swamps are generally planted with rice, chili, and other vegetables, and tidal lowlands are also planted with rice but more intensive (two-three indexes) compared to that of freshwater swamps (one index) (Herlinda et al. 2018b). While peatlands are rarely planted with annual crops, they are usually used for oil palm plantation (Dohong et al. 2018), forestry and conservation areas.

The Indonesia wetland soil is generally varied, particularly viewed from the aspects of soil moisture, texture, and pH. Soil texture of freshwater swamps is silt dominant (mud) which is silt sedimentation from the river flow, and contains balanced clay and sand (Kartika et al. 2018), the tidal lowlands contain silt of a mixture of river and sea water deposits, the clay and sand content remains balanced (Marlina et al. 2016), the peat soil does not contain clay, sand, and the silt contains only organic matter (Mulyani and Sarwani 2013). The freshwater swamp soil contains pH ranging from 4 to 4.5 (Kodir and Juwita, 2016), the tidal lowlands containing pH between 4.17-5.35 (Marlina et al. 2016), and in the peatlands pH ranging from 3.60-3.95 (Utami et al. 2009).

Entomopathogenic fungi are those of soil parasitizing and killing insects pest and proved superior in biological control. However, *Beauveria bassiana* and *Metarhizium anisopliae* are two examples of entomopathogenic fungi (Herlinda et al. 2018a), whose utilization is often constrained by external factors (Sumikarsih et al. 2019). *B. bassiana* is facultative parasites that can be parasitic on insects and saprophytes in soil or organic matter. Soil pH variations of each ecosystem can affect the ability of adaptation of

entomopathogenic fungi as saprophytes (Bugeme et al. 2008). The too acidic pH medium, though grows both fungi, but can reduce the viability and density of conidia, even kill the fungi (Rizkie et al. 2017) and reduce the fungal biodiversity in the soil (Safitri et al. 2018). However, there are still species or isolates of the fungi conidia still survive at pH 2 (Rizkie et al. 2017). According to Pinnamaneni et al. (2010), the minimum pH 4 is generally required by *B. bassiana* which enables these fungi to produce chitinase enzymes that can kill host insects. The pH range of the culture medium used for growing *B. bassiana* under acidic is at (4.0), neutral at (7.0), and basic at (11.0) (Qazi 2008). The results of the previous studies on wetland soils in South Sumatra depicted the acidic pH potential of inoculum of *B. bassiana* and *M. anisopliae* from peat soil as compared to those of freshwater swamps and tidal lowlands (Safitri et al. 2018), yet the effectiveness of these fungi against insect pests is still unknown. The main insect pests mostly attack chili (*Capsicum annuum* L.) and other specific vegetables grown in wetlands (Johari et al., 2014, 2016). Isolates of entomopathogenic fungi able to survive and still effective at extremely low pH are superior isolates that have the potential as biological agents that can be utilized and expected to survive saprophytically on the soil of the wetlands ecosystem. The objective of this research was to test the toxic activity of *B. bassiana* culture filtrates from liquid medium at pH 2.5 and 6 against the larvae of *Spodoptera litura*.

MATERIALS AND METHODS

Study area

The study was conducted at the Laboratory of Entomology, Department of Plant Pests and Diseases, Faculty of Agriculture, Universitas Sriwijaya, Indralaya from October 2018 to March 2019. The average temperature during the experiment was 29.60 °C and relative humidity was 82.34%. All *B. bassiana* isolates used in this experiment were explored from the wetlands

South Sumatra, Indonesia (Figure 1) as the results of the exploration carried out by Safitri et al. (2018). In this study, the *Spodoptera litura* were selected as tested insects because they found to attack the vegetable plants commonly grown on wetlands most dominantly.

Test insect preparation

The larvae of *Spodoptera litura* were collected from chili and other vegetables are grown without the application of synthetic insecticides at the Experimental Farm of the Faculty of Agriculture, Universitas Sriwijaya. Then the larvae of *S. litura* were taken to the laboratory and kept in a plastic jar (15 x 25 cm) carefully at room temperature. a chili plant was inserted into the jar to feed *S. litura* larvae which were then maintained until the second generation.

The growing larvae were transferred into another jar already provided with fresh chili every day. Every day the larvae were moved into another jar. When the final instar larvae entered the pupa phase, they were moved into a plastic jar having been provided with soil (10 cm thick) which was already sterilized in the oven for 1 hour at

100°C. Chili plants were also provided in this jar to facilitate egg-laying of *S. litura* adults which started to appear from the pupae.

The eggs were laid by the adults on the underside of the leaves. Four days later the egg colonies were transferred into other jars already provided with new fresh chili leaves to feed newly hatched larvae. The mass-rearing was carried out to obtain the second generation culture. The one-day second instar larvae were used for test insects of this study.

Preparation of *Beauveria bassiana* isolates

The isolates were first made fit using a modified method of Herlinda (2010). For preparation of culture media, in 16.2 g of Sabouraud Dextrose Agar (SDA, Merck) 250 ml aquadest was added, sterilized in an autoclave for 120 minutes at a pressure of 1 atm and poured was poured into a 10 ml Petri dish (9 cm diameter) under aseptic conditions of laminar airflow and allowed to solidify. Then *B. bassiana* was cultured on solidified culture media (SDA) along with the *Tenebrio molitor* larvae.

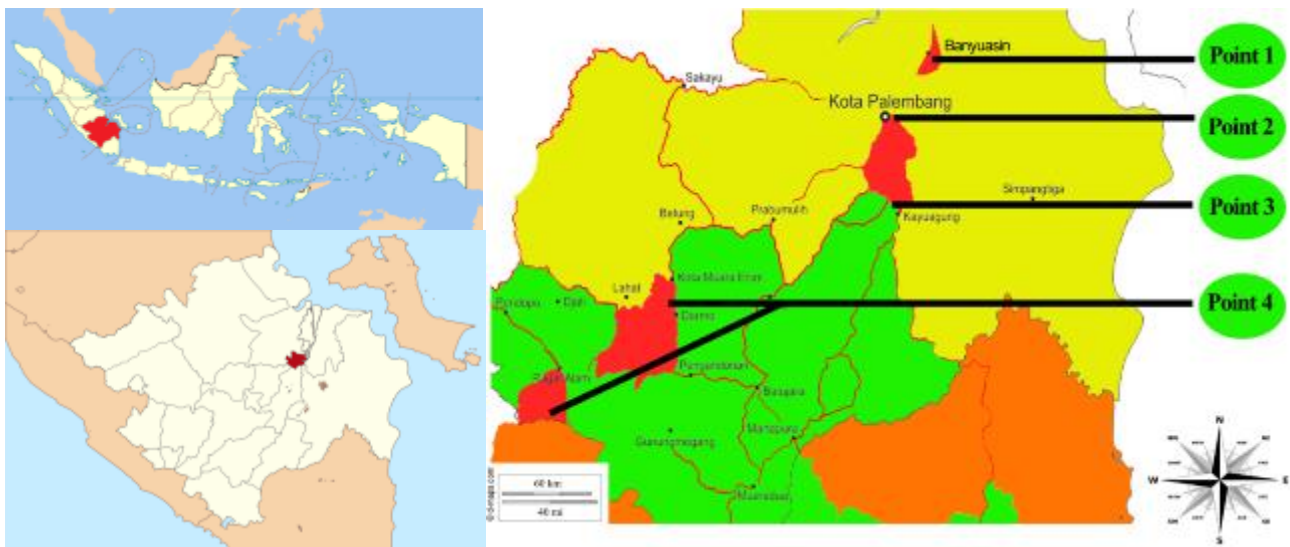


Figure 1. Locations of *Beauveria bassiana* isolates exploration from wetland soil in South Sumatra, Indonesia: point 1 = tidal lowlands, point 2 = freshwater swamps, point 3= peatlands, and point 4 = highlands (Safitri et al. 2018).

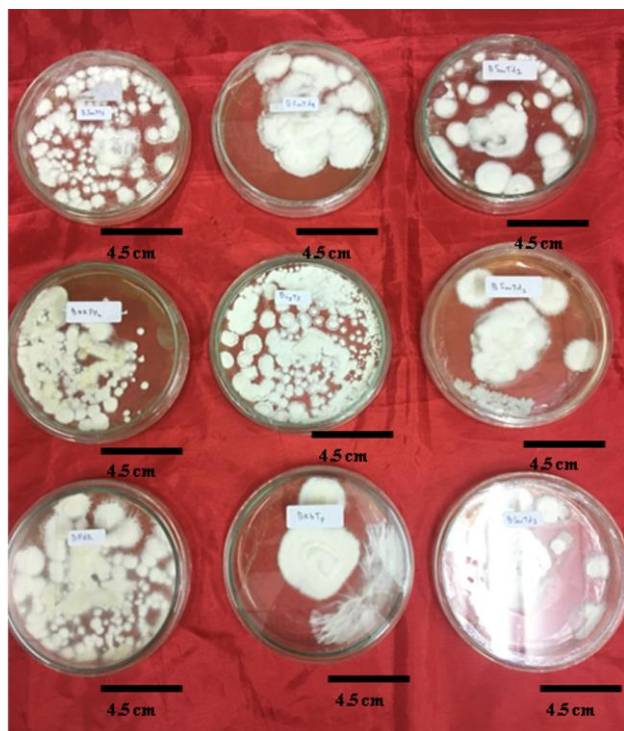


Figure 2. *Beauveria bassiana* SDA culture incubated for 7 days

Table 1. Isolates identity of *Beauveria bassiana* used in this research

Code of isolate	Ecosystems	Vegetation or crop plants	Village or city
BPdR	Freshwater swamps	Paddy	Rambutan
BJgTs	Tidal lowlands	Corn	Telang Sari
BSmMs	Tidal lowlands	Watermelon	Mulya Sari
BSwTd1	Peatlands	Oil palm	Talang Dabok
BSwTd2	Peatlands	Oil palm	Talang Dabok
BSwTd3	Peatlands	Oil palm	Talang Dabok
BSwTd4	Peatlands	Oil palm	Talang Dabok
BKKPp2	Highlands	Rubber and coffee	Pulau Pinang
BKbTp	Highlands	Cabbage	Talang Patai

Preparation of culture filtrate

About one-week old isolates of entomopathogenic fungi isolated from SDA media (Figure 2) were then grown in PDB (Potato Dextrose Broth) media. The media composition of PDB consisted of 20 g dextrose monohydrate, 200 g peeled potatoes, and 1,000 ml aquadest. Before being extracted, the potatoes were first to cut into cubes with a size of ± 2 cm, and boiled using 1,000 ml aquadest for 20 minutes. Then, the pH of PDB medium was regulated using the method of (Rizkie et al. 2017) by dripping the medium with 32% HCl as many as 1 to 8 drops with 10 μ l micropipette until reaching the pH 2.5. Meanwhile, to get pH 6, the PDB medium was dripped with NaOH 1 mole as many as 1 to 8 drops with 10 μ l micropipette until it reached the pH 6. Based on the

consideration of the soil in the wetlands, the determination of the treatment of pH 2.5 and 6 was pH <3, whereas the pH 6 was the ideal pH for fungal growth (Qazi 2008). About 150 ml liquid medium was poured into a heat-resistant glass bottle (volume 300 ml) and sterilized into an autoclave for 120 minutes at a pressure of 1 atm. After being cooled, *B. bassiana* culture was inoculated in this PDB medium for 6 weeks.

Production of culture filtrate

Six weeks old culture broth of each *B. bassiana* isolates was then filtered to separate extracts from hyphae, mycelia, and conidia. Two stages of filtration method was adapted with slight modification (Cheong 2015). The purpose of separation from hyphae, mycelia, and conidia was to get a culture filtrate containing toxic insecticidal compounds. In first stage of filtration, 100 ml of *B. bassiana* culture on the SDB was poured into an Erlenmeyer tube (volume of 500 ml) whose tube mouth was fitted with Whatman filter paper number 42 cotton-coated 1 cm thick and produced ± 70 ml coarse culture filtrate. The coarse culture filtrate was filtered using a syringe filter (0.45 μ m-25 mm) conducted in second stage filtration as follows: 1 ml of the first stage coarse culture filtrate was sucked using a hypodermic needle (volume of 6 ml) and then the needle was removed and the base of the needle was attached a syringe filter. Then the needle was attached back to the hypodermic needle and 1 ml of crude culture filtrate was filtered using a syringe filter to obtain the culture filtrate. The culture filtrates were used at a concentration of the original preparation without dilution by sterile water.

Isolates activity insecticidal test of *Beauveria bassiana*

1 ml culture filtrates obtained in second filtration was dropped onto the chili leaves; then these leaves were infested with test insects (the second instar of *S. litura* larvae) as many as 25 test insects per isolate for 6 hours and repeated three times. Before being treated, the test insects were left unfed for 2 hours and weighed using a Portable Jewelry Scale (capacity of 30 g x 0.01 g). After 6 hours of infestation and ensuring that all larvae ate the leaves moistened with the culture filtrate *B. bassiana*, the test insects were moved into a plastic cylinder (the top of which was covered with gauze) in which there were 5 new chili leaves (without culture filtrate of *B. bassiana*). Every 1 x 24 hours the dead larvae were recorded and the chili leaves were replaced and the area of the eaten leaves, the weight of the feces, and the larvae body weight were measured. The observations of these variables were carried out for 12 days.

To measure the percentage of the foliar damage area caused by the insects, a bioleaf application as given by Machado et al. (2016) was used. The area of chili leaves before being eaten was measured using the formula of Widuri et al. (2017) as follows:

$$ILD = 0.606 \times P \times L$$

ILD = Index of leaf area (cm²); P = leaf length; L = leaf width

Defoliation is the percentage of leaves eaten by the insects. Defoliation was measured using the following formula:

$$\text{LDD} = \text{D} \times \text{ILD}$$

LDD = area of eaten leaves; D = Defoliation

Data analysis

Differences in data on body weight and feces, and the area of eaten leaves among the isolates are shown in a graphical form. Mortality and time of death of the test insects (LT₅₀) were analyzed using analysis of variance (ANOVA). Tukey's Honestly Significant Difference (HSD) Test was employed to test for significant difference among the treatments (isolates) at P = 0.05. LT₅₀ and LT₉₀ values were calculated by using probit analysis. All data were analyzed using software of SAS University Edition 2.7 9.4 M5.

RESULTS AND DISCUSSION

Insecticidal activity of *Beauveria bassiana*

The culture filtrates of nine *B. bassiana* isolates already produced from liquid media both incubated at pH 2.5 and pH 6 showed different lethal or toxicity capabilities towards *S. litura* larvae (Table 2). The culture filtrates produced from culture media with pH 6 showed that the larvae mortality increased sharply from day 4 to 12, whereas at pH 2.5 the mortality of new test larvae occurred on day 9 and did not increase sharply (Figure 3). On the twelfth day after being applied with the culture filtrates incubated at pH 6 medium, the mortality of tested larvae reached 92%, while those applied with the culture filtrates incubated at pH 2.5 medium only reached 13.33%. Therefore, the pH on the culture medium of *B. bassiana* could affect the level of toxicity of the culture filtrate. On the last day of observation, the culture filtrates of nine *B. bassiana* isolates from culture medium at pH 6 showed high toxicity to isolate BPdR, BJgTs, BSmMs, BSwTd2, BSwTd4, BKKPp2 and significantly different from controls (Table 2). However, the culture filtrates of nine *B. bassiana* isolates from the culture medium at pH 2.5, all of which had lower toxicity compared to culture filtrates from culture medium at pH 6. The highest toxicity at pH 2.5 was found in BPdR isolates, BJgTs, BSmMs, BSwTd2, BSwTd3, BSwTd4, and BKKPp2. Yet, although they were cultured on a medium at pH 2.5, the isolates were still quite toxic to the test insects.

The color of culture filtrate from culture media with pH 6 and 2.5 also showed significant differences (Figure 4). The color of the culture filtrate of pH 6 culture media was generally dark brown, while the pH 2.5 was light brown. The most striking color of the culture filtrate isolates of BPdR, BJgTs, BSmMs, BSwT2, BSwTd4, and BKKPp2 of the pH 6 culture media was more brown than those of pH 2.5. If these data were related to the mortality data (Table

2), the isolates which gave rise to the dark brown color of culture filtrate resulted in a higher mortality rate.

After applying the culture filtrates of nine isolates of *B. bassiana* from the pH 6 medium, the LT₅₀ and LT₉₀ *S. litura* larvae were shorter than those of pH 2.5 (Table 3). Meanwhile, after applying the culture filtrates from the pH 6 medium, the LT₅₀ *S. litura* larvae showed an effect that was not significantly different among the isolates, as well as the LT₅₀ which was applied the culture filtrates of pH 2.5 medium. After applying the culture filtrates from pH 6 medium, the LT₉₀ of *S. litura* larvae showed significantly different effects among the isolates. The LT₉₀ was found the shortest in BJgTs isolates, while the longest one was found in BSwTd3 isolates. After applying the culture filtrates from pH 2.5 medium, the LT₉₀ of *S. litura* larvae showed no significant difference among the isolates.

The effects of *Beauveria bassiana* culture filtrates on larval growth

The results of effects of *B. bassiana* culture filtrates from pH 6 or pH 2.5 medium on leaf eaten area (Figure 5) revealed that weight of feces (Figure 6), and weight of larvae (Figure 7) showed similar trends. The older the larvae age was, the wider the leaves were eaten, and the more weight of feces the larvae per animal becomes. The larvae fed with the controlled leaves (not applied to the culture filtrates *B. bassiana*) ate chili leaves most widely and produced most waste. The weight of all treated larvae, except the control ones, showed a tendency to begin to decline on the sixth day. After 12 days of application, the weight of the larvae treated with the culture filtrates *B. bassiana* from pH 6 medium decreased their weight sharply and the lowest weight reached below 0.5 g/head. The weight of larvae fed with the treatment of culture filtrates from pH 2.5 medium also decreased, but the lowest weight was still above 1g/head after 12 days of application. The larvae weight in the control group, both at pH 6 and pH 2.5 media, continued to increase until the end of the observation (after 12-day application).

The larvae of *S. litura* applied to a culture filtrates *B. bassiana* from a pH 6 or pH 2.5 medium showed the same symptoms; 1 x 24 hours after consuming the treatment leaves, the larvae movement became less active as compared to larvae ate the control leaves. The larvae bodies that were applied to culture filtrates of pH 6 and pH 2.5 tended to be smaller than those of the control. The dead larvae as a result of the applied culture filtrates showed symptoms such as dry, wrinkled, stiff like a mummy, and dull integument body (Figure 8), and they did not smell. In addition, the mouth of the dead larvae secreted green liquid. These dead larvae were checked to find out whether their death due to *B. bassiana* spore infection or due to toxic compounds contained in the culture filtrates, by putting these dead larvae into the SDA media. After 7 days of being incubated in the SDA medium, all of the dead insects did not show the infection caused by spores of *B. bassiana*. Therefore, the death of *S. litura* larvae in this study was caused by the toxin compounds contained in the culture filtrates.

Table 2. Mortality of larval *Spodoptera litura* at 4, 8, 12 days after being infested with *Beauveria bassiana* culture filtrates from medium at pH 2.5 and 6

Code of isolate	Mortality of <i>Spodoptera litura</i> larvae (%)					
	4 days		8 days		12 days	
	pH 2.5	pH 6	pH 2.5	pH 6	pH 2.5	pH 6
BPdR	0.00	5.33 ^a	0.00	34.67 ^{bc}	8.00 ^b	73.33 ^b
BJgTs	0.00	5.33 ^a	0.00	46.67 ^c	6.67 ^b	92.00 ^b
BsmMs	0.00	8.00 ^b	0.00	32.00 ^{bc}	6.67 ^b	85.33 ^b
BSwTd1	0.00	1.33 ^a	0.00	22.67 ^b	0.00 ^a	46.67 ^{ab}
BSwTd2	0.00	2.67 ^a	0.00	28.00 ^{bc}	8.00 ^b	73.33 ^b
BSwTd3	0.00	2.67 ^a	0.00	26.67 ^{bc}	6.67 ^b	40.00 ^{ab}
BSwTd4	0.00	5.33 ^a	0.00	30.67 ^{bc}	13.33 ^b	65.33 ^b
BKKPp2	0.00	5.33 ^a	0.00	33.33 ^{bc}	8.00 ^b	73.33 ^b
BKbTp	0.00	0.00 ^a	0.00	25.33 ^b	0.00 ^a	48.00 ^{ab}
Kontrol	0.00	0.00 ^a	0.00	0.00 ^a	0.00 ^a	0.00 ^a
ANOVA F-value	-	3.07 [*]	-	19.77 [*]	8.55 [*]	5.33 [*]
P value (0.05)	-	0.02	-	0	0	0
Tukey's HSD test	-	15.5	-	12.8	13.3	50.2

Note: * = significantly different; values within a column (the data of each isolate) followed by the same letters were not significantly different at $P < 0.05$ according to Tukey's HSD test. Original data were transformed using Arcsin transformation prior to statistical analysis

Table 3. LT_{50} and LT_{95} of larval *Spodoptera litura* caused by *Beauveria bassiana* culture filtrates from medium at pH 2.5 and 6

Code of isolate	LT_{50} (days) \pm SD		LT_{90} (days) \pm SD	
	pH 2.5	pH 6	pH 2.5	pH 6
BPdR	14.83 \pm 0.44	9.71 \pm 0.81	17.35 \pm 0.53	14.11 \pm 1.38 ^{ab}
BJgTs	14.82 \pm 0.45	8.28 \pm 0.45	17.15 \pm 0.58	11.63 \pm 0.60 ^a
BsmMs	15.36 \pm 0.99	9.19 \pm 0.48	18.37 \pm 1.68	13.50 \pm 1.52 ^{ab}
BSwTd1	-	11.49 \pm 0.54	-	16.67 \pm 0.87 ^{ab}
BSwTd2	15.06 \pm 0.34	10.24 \pm 1.11	18.10 \pm 0.41	14.51 \pm 1.94 ^{ab}
BSwTd3	14.66 \pm 0.74	11.89 \pm 0.36	17.52 \pm 1.20	17.20 \pm 0.66 ^b
BSwTd4	14.05 \pm 0.17	10.03 \pm 0.48	16.76 \pm 0.44	15.03 \pm 0.37 ^{ab}
BKKPp2	14.97 \pm 0.60	9.59 \pm 0.80	17.95 \pm 1.05	14.06 \pm 1.30 ^{ab}
BKbTp	-	11.52 \pm 1.09	-	16.55 \pm 1.56 ^{ab}
Kontrol	-	-	-	-
ANOVA F-value	0.49 ^{ns}	2.72 ^{ns}	0.38 ^{ns}	2.55 [*]
P value (0.05)	0.80	0.05	0.88	0.04
Tukey's HSD test	-	-	-	6.38

Note: ns = not significantly different; * = significantly different; values within a column (the data of each isolate) followed by the same letters were not significantly different at $P < 0.05$ according to Tukey's HSD test. Original data were transformed using Arcsin transformation prior to statistical analysis

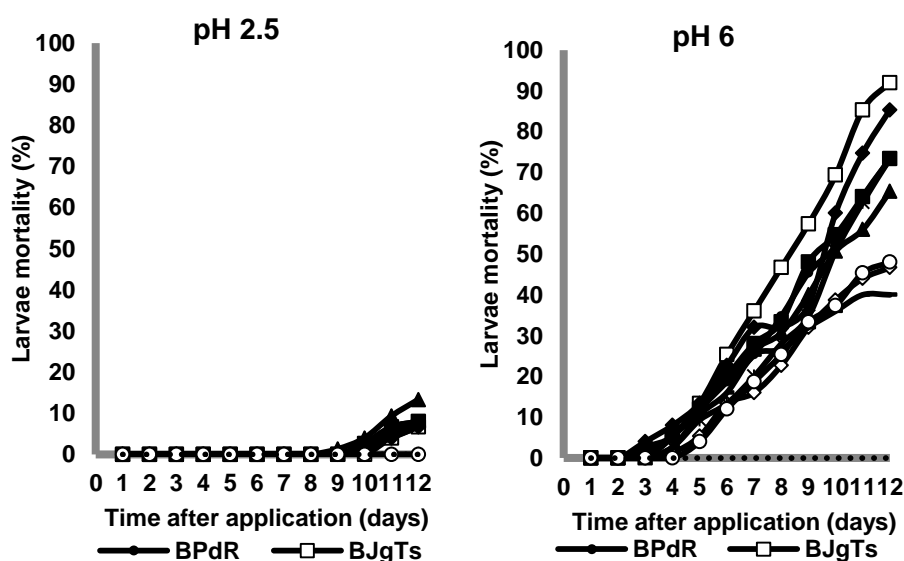


Figure 3. Mortality of *Spodoptera litura* larvae



Figure 4. *Beauveria bassiana* isolates cultured in SDA, PDB, and culture filtrate: BPdR (a), BJgTs (b), BSmMs (c), BSwTd1 (d), BSwTd2 (e), BSwTd3 (f), BSwTd4 (g), BKKPp2 (h), BKbTp (i)

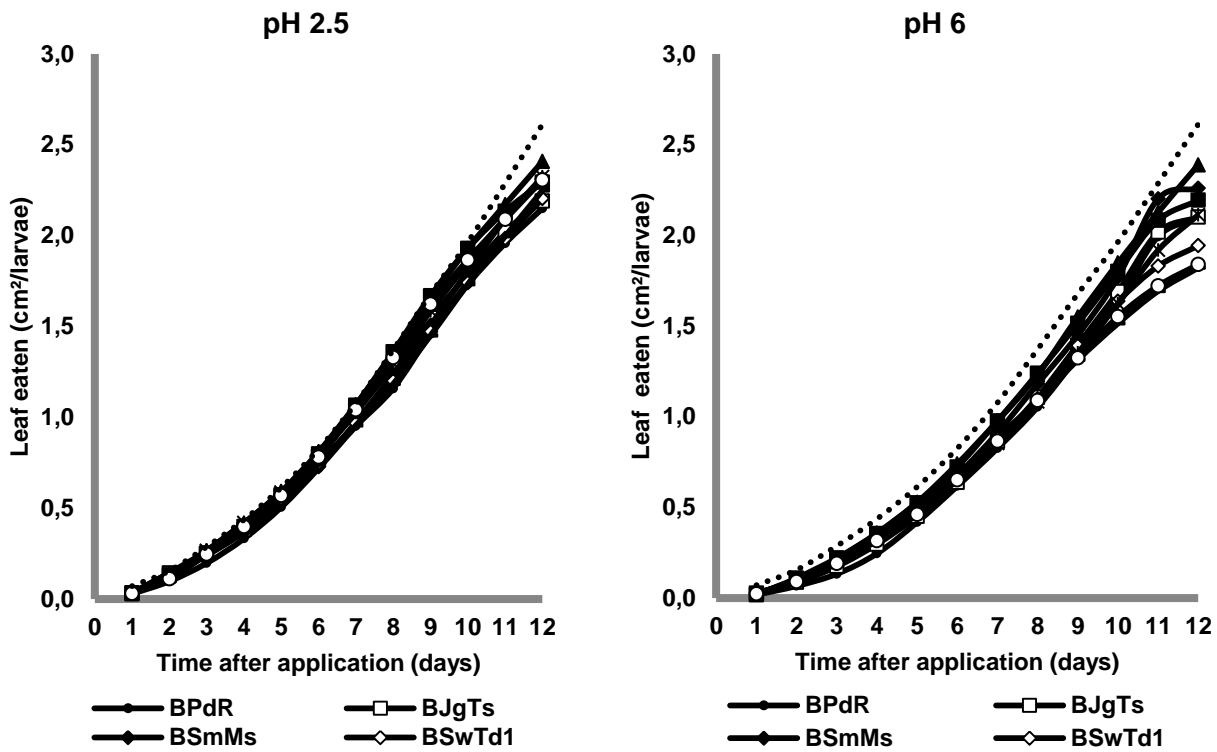


Figure 5. Leaf eaten by *Spodoptera litura*

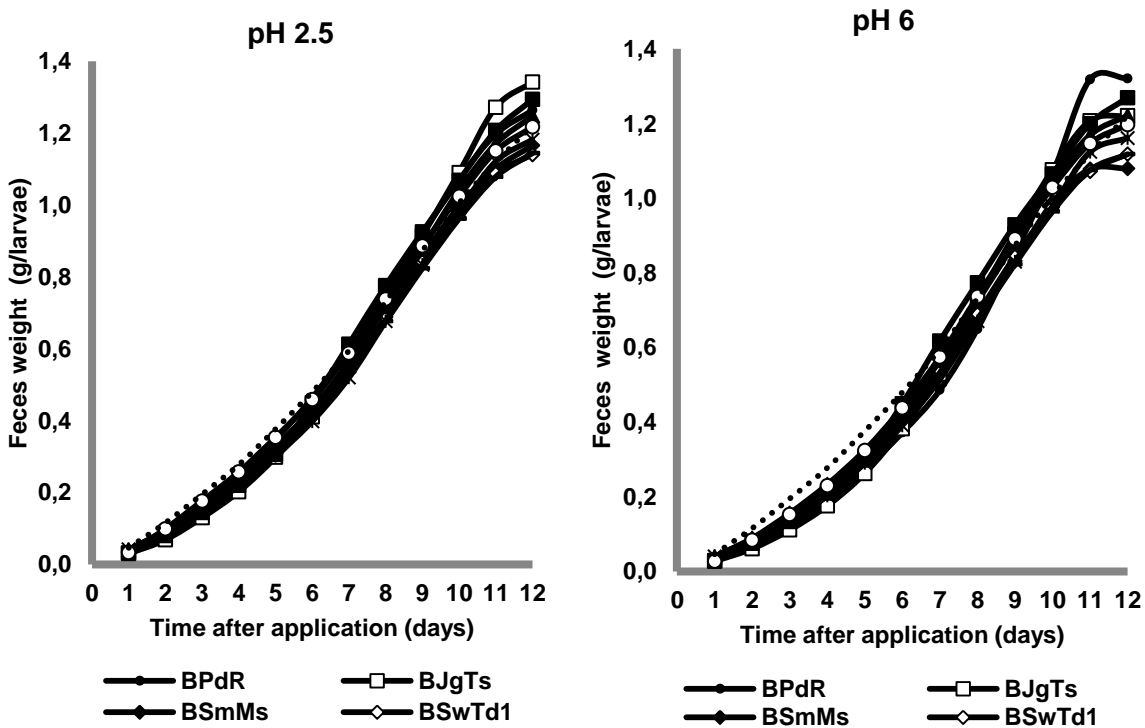


Figure 6. Weight of *Spodoptera litura* feces



Figure 7. The dead larvae of *Spodoptera litura* caused by *Beauveria bassiana* culture filtrate (a) and the healthy one (b)

Discussion

The data showed that the culture filtrates of *B. bassiana* from PDB with pH 6 caused mortality of *S. litura* larvae which was higher than the mortality resulted from the culture filtrates of PDB at pH 2.5. In this study, the culture filtrate produced from the separation of liquid *B. bassiana* culture from its spores was toxic and lethal on larvae of test insects. According to Pinnamaneni et al. (2010) incubation of test fungi in liquid medium produces exochitinase enzyme and the chitinolytic exochitinase enzyme, able to degrade cuticle insects. Based on the resulting mortality, the culture filtrates of *B. bassiana* from medium of PDB (pH 6) were more toxic than that of pH 2.5. The pH range for chitinase activity of *B. bassiana* was pH 4-6. More acidic or alkaline nature lowers the activity of culture media (Pinnamaneni et al. 2010). In addition, the pH of culture media less than 3 is less ideal for the growth and viability of spores of *B. bassiana* (Rizkie et al. 2017). The most ideal pH to produce the *B. bassiana* spores is the pH 5.2 (Pham et al. 2009). The liquid media with a pH less than 3 can cause a decrease in the density and viability of *B. bassiana* spores (Pham et al. 2009; Rizkie et al. 2017).

This study found that the culture filtrates of *B. bassiana* derived from PDB medium of pH 2.5 still caused deaths in test larvae. The isolates of BPdR, BJgTs, BSmMs, BSwTd2, BSwTd3, BSwTd4, and BKKPp2 still caused 6.6-13.33% deaths. This proves that the culture filtrates of the isolates are still toxic. Only the superior isolates are still toxic at pH below 3; generally, *B. bassiana* isolates are able to produce insecticidal culture filtrates if the liquid media during culture *B. bassiana* has a pH of 3 and above (Cheong 2015). Six of the seven toxic isolates were those from wetland soil (peat soils, tidal lowland, and freshwater swamp soil) in South Sumatra which had a pH below 3 (Safitri et al. 2018), have the potential to survive as saprophytes in low pH soils. The failure of entomopathogenic fungi to survive as saprophytes in acidic soils, such as soil in peatlands, tidal lowlands, and freshwater swamps spreading across Sumatra, Kalimantan,

and Papua can be overcome if the isolates that hold low pH results of this study applied over there.

In the treatment with culture filtrates of *B. bassiana* from medium of pH 6 or pH 2.5, the area of the eaten leaves decreased as compared to those of the controls which were given only sterile aquadest. The results of this study showed that the culture filtrates of *B. bassiana* could reduce the appetite of *S. litura*. The weight of *S. litura* larvae eating the leaves which were applied with culture filtrates of *B. bassiana* from pH 6 or pH 2.5 showed a tendency to lose weight on the sixth day, whereas those in the control group on the sixth day until the end of the observation, the larvae weight continued to rise. The decrease in the larvae weight in the culture filtrate treatment resulted from the sick larvae experiencing slowdown growth. The body of the sick larvae continued to decrease in size, shrink, and dried out and finally, they died. The larvae that were sick from eating the leaves applied to culture filtrates showed a difference when compared to the larvae that died from being infected with *B. bassiana* spores. According to Safitri et al. (2018) and Sumikarsih et al. (2019), the larvae that died as a result of being infected with the entomopathogenic fungus spores showed symptoms such as the body decreasing in size, shrinking, drying, and having no smell; however, from the host insect's body grew the fungus in the form of mycelia, hyphae and spores on the surface of the integument. The non-growth of *B. bassiana* in larvae of this study resulted from the loss of mycelia, hyphae, and spores in the culture filtrate. Consequently, the death of larvae caused by the toxic compounds contained in the culture filtrate *B. bassiana* did not result from the infection with *B. bassiana* spores.

The color of the culture filtrate at pH 6 culture medium was browner than the that of pH 2.5. According to Qazi (2008), pH can change the color of culture filtrate because it affects *B. bassiana* in releasing protease enzymes and influencing toxin production (Sharma et al. 1992). The protease of *B. bassiana* enzyme functions to dissolve insect body proteins and kill them (Mancillas-Paredes et al. 2019). The optimal pH can cause the fungus to release ammonia and citrate which can increase activity of extracellular enzymes (Khachatourians et al. 2007). Therefore, the data of this study showed that the isolates at pH 6 were browner and caused mortality of *S. litura* larvae to be higher than those of pH 2.5 due to the more toxic culture filtrate.

The results of this study conclude that the culture filtrates *B. bassiana* of the liquid medium at pH 6 are more toxic against the larvae of the *S. litura* than those at pH 2.5. Still, an important finding was found that the culture filtrates of isolates of BPdR, BJgTs, BSmTd2, BSwTd3, BSwTd4, and BKKPp2 from pH 2.5 media still had high toxicity against the larvae. These isolates have the potential to survive and settle on low pH soils. Therefore, these isolates have the opportunity to be successfully utilized in

low pH ecosystems, such as peatlands, tidal lowlands, and freshwater swamps in Indonesia.

ACKNOWLEDGEMENTS

This research was funded by the scheme of Applied Research (Riset Terapan) with budget year of 2019 according to Directorate of Research and Community Service (DRPM), Directorate General for Research and Development, Indonesian Ministry of Research, Technology, and Higher Education, Contract Number: 211/SP2H/LT/DRPM/IV/2019. This research was chaired by Siti Herlinda.

REFERENCES

- Bugeme DM, Maniania NK, Knapp M, Boga HI. 2008. Effect of temperature on virulence of *Beauveria bassiana* and *Metarhizium anisopliae* isolates to *Tetranychus evansi*. *Exp Appl Acarol* 46: 275-285.
- Cheong P. 2015. Bioactive Metabolites of an Isolate of the Entomopathogenic Fungus *Beauveria bassiana*. Lincoln University, USA.
- Dohong A, Aziz AA, Dargusch P. 2018. Carbon emissions from oil palm development on deep peat soil in Central Kalimantan Indonesia. *Anthropocene* 22: 31-39.
- Herlinda S. 2010. Spore density and viability of entomopathogenic fungal isolates from Indonesia, and their virulence against *Aphis gossypii* Glover (Homoptera: Aphididae). *Trop Life Sci Res* 21: 11-19.
- Herlinda S, Rizkie L, Suwandi, Susilawati, Lakitan B, Verawaty M, et al. 2018a. Effects of high temperature and ultraviolet-C irradiance on conidial viability and density of *Beauveria bassiana* and *Metarhizium anisopliae* isolated from soils of lowland ecosystems in Indonesia. *Eurasian J Anal Chem* 13: 209-216.
- Herlinda S, Yudha S, Thalib R, Khodijah, Suwandi, Lakitan B, et al. 2018b. Species richness and abundance of spiders inhabiting rice in fresh swamps and tidal lowlands in South Sumatra, Indonesia. *J ISSAAS* 24: 82-93.
- Johari A, Herlinda S, Irsan C, Pujiastuti Y. 2016. Phenomenon of Thrips (Thysanoptera) attack on chili plant (*Capsicum annuum*). *Am J Agric Biol Sci* 11: 103-109.
- Johari A, Herlinda S, Pujiastuti Y, Irsan C, Sartiami D. 2014. Morphological and genetic variation of *Thrips parvispinus* (Thysanoptera: Thripidae) in chili plantation (*Capsicum annuum* L.) in the lowland and highland of Jambi Province, Indonesia. *Am J Biosci* 2: 17-21.
- Kartika K, Lakitan B, Wijaya A, Kadir S, Widuri LI, Siaga E. 2018. Effects of particle size and application rate of rice-husk biochar on chemical properties of tropical wetland soil, rice growth and yield. *Austr J Crop Sci* 12: 817-826.
- Khachatourians GG, Qazi SS, Reid WR. 2007. Biochemistry and molecular biology of entomopathogenic fungi. In: Brakhage AA, Zipfer PF (eds.). *The Mycota VI: Human and animal relationships*. Springer-Verlag, Berlin.
- Kodir KA, Juwita Y. 2016. Morphological characterization and inventory of local wetland rice collected from South Sumatra Province. *Bul Plasma Nutfah* 22: 101-108.
- Mancillas-Paredes JM, Hernández-Sánchez H, Jaramillo-Flores ME, and García-Gutiérrez C. 2019. Proteases and chitinases induced in *Beauveria bassiana* during infection by *Zabrotes subfasciatus*. *Southwestern Entomologist* 44(1): 125-137.
- Marlina N, Asmawati, Zairani FY, Midranisiah, Aryani I, Kalasari R. 2016. Biofertilizer utilization in increasing inorganic fertilizer efficiency and rice yield at c-type flooding land of Tanjung Lago Tidal Lowland. *Intl J Engg Res Sci Tech* 5: 74-83.
- Mulyani A, Sarwani M. 2013. The characteristics and potential of sub optimal land for agricultural development in Indonesia. *J Sumberdaya Lokal* 7: 47-55. [Indonesian].
- Pham TA, Kim JJ, Kim SG, Kim K. 2009. Production of blastospore of entomopathogenic submerged batch culture. *Mycobiology* 37: 218-224.
- Pinnamaneni R, Kalidas P, Rao KRSS. 2010. Cloning and expression of Bbchit1 gene of *Beauveria bassiana*. *Open Entomol J* 4: 30-35.
- Qazi SS. 2008. Regulatory role of ambient pH in the expression of pathogenicity determinant gene products of *Beauveria bassiana* and *Metarhizium anisopliae*. [Dissertation]. University of Saskatchewan, Saskatchewan.
- Rizkie L, Herlinda S, Suwandi, Irsan C, Susilawati, Lakitan B. 2017. Conidial density and viability of *Beauveria bassiana* and *Metarhizium anisopliae* grown on the low-pH in vitro medium. *J HPT Trop* 17: 119-127. [Indonesia].
- Safitri A, Herlinda S, Setiawan A. 2018. Entomopathogenic fungi of soils of freshwater swamps, tidal lowlands, peatlands, and highlands of South Sumatra, Indonesia. *Biodiversitas* 19: 2365-2373.
- Sharma S, Agarwal GP, Rajak RC. 1992. Effect of temperature, pH and light on toxin production by *Beauveria bassiana* (Bal) Vuill. *Indian J. Exp. Biol.* 30: 918-919.
- Sumikarsih E, Herlinda S, Pujiastuti Y. 2019. Conidial density and viability of *Beauveria bassiana* isolate from Java and Sumatra and their virulence against *Nilaparvata lugens* at different temperatures. *Agrivita Journal of Agricultural Science* 41: 335-349.
- Utami SNH, Maas A, Radjaguguk B, Purwanto BH. 2009. Nature on soil physical, chemical and FTIR spectrophotometry of hydrophobic peat from Central Kalimantan. *J Trop Soils* 14: 159-166.
- Widuri LI, Lakitan B, Hasmeda M, Sodikin E, Wijaya A, Kartika K, et al. 2017. Relative leaf expansion rate and other leaf-related indicators for detection of drought stress in chili pepper (*Capsicum annuum* L.). *Aust J Crop Sci* 11: 1617-1625.

5. Bukti tagihan untuk penerbitan artikel



Biodiversitas & Nusantara Biosci.

Society for Indonesian Biodiversity

Jl. Ir. Sutami 36 A Surakarta 57126
 Tel./Fax. 0271-663375, email: unsjournals@gmail.com
<http://biodiversitas.mipa.uns.ac.id/>
<http://biosains.mipa.uns.ac.id/nusbioscience.htm>

INVOICE

for AUTHOR

DATE	06/07/19
	948
CUSTOMER ID	948
DUE DATE	13/07/2019

BILL TO

SITI HERLINDA

Research Center for Sub-optimal Lands (PUR-PLSO), Universitas Sriwijaya.
 Palembang 30139, South Sumatra, Indonesia
 email: sitiherlinda@unsri.ac.id

Title:

Insecticidal activity of culture filtrates from liquid medium of *Beauveria bassiana* isolates from South Sumatra (Indonesia) wetland soil against larvae of *Spodoptera litura*

DESCRIPTION	TAXED	AMOUNT (IDR)
Payment for manuscript publication		3.500.000,00
Payment for English improvements		1.000.000,00
Cost reduction for manuscript presented in the SIB Meeting		-

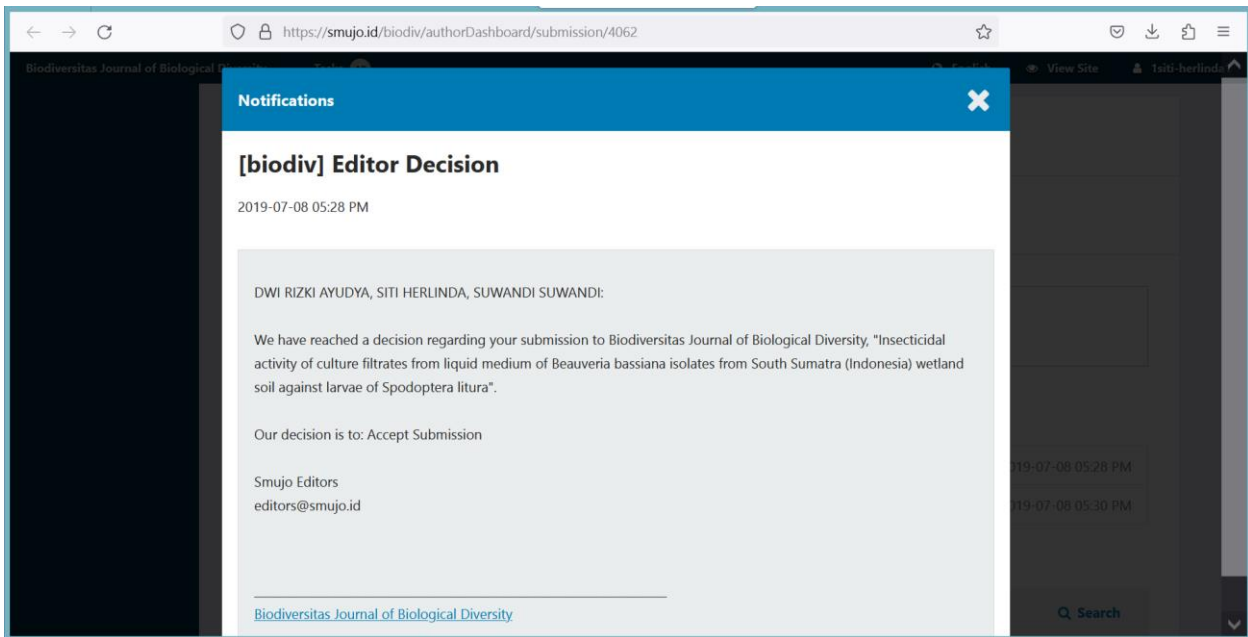
Subtotal	4.500.000,00
Taxable	-
Tax rate	0,000%
Tax due	-
Other	-
TOTAL IDR	4.500.000,00

OTHER COMMENTS

1. Currency exchange: USD 1 = IDR 14,000
2. **Total bill: IDR 4.500.000,-**
3. Transfer to BNI (BNINIDJA), Acc. no. 0356986994 (Dewi Nur Pratiwi)
4. Send the proof of payment to unsjournals@gmail.com and a carbon copy (CC) to dewinp11@gmail.com

If you have any questions about this invoice, please contact
 Dewi NP. HP +62-812-9165-0588, email: dewinp11@gmail.com

Terimakasih atas partisipasi anda



The screenshot shows a web browser window with a notification overlay. The browser's address bar displays the URL <https://smujo.id/biodiv/authorDashboard/submission/4062>. The notification is titled "[biodiv] Editor Decision" and is dated 2019-07-08 05:28 PM. The notification text reads: "DWI RIZKI AYUDYA, SITI HERLINDA, SUWANDI SUWANDI: We have reached a decision regarding your submission to Biodiversitas Journal of Biological Diversity, 'Insecticidal activity of culture filtrates from liquid medium of Beauveria bassiana isolates from South Sumatra (Indonesia) wetland soil against larvae of Spodoptera litura'. Our decision is to: Accept Submission". The notification is signed by Smujo Editors at editors@smujo.id. At the bottom of the notification, there is a link to [Biodiversitas Journal of Biological Diversity](#). The background of the browser shows a dark sidebar with a search bar and a main content area that is mostly obscured by the notification.