

Evaluation of Land Subsidence Impact at Lowland Areas Using Analytical Hierarchy Process (AHP) Method

by Eddy Ibrahim

Submission date: 30-May-2019 01:19PM (UTC+0700)

Submission ID: 1137752495

File name: Lowland_Areas_Using_Analytical_Hierarchy_Process_AHP_Method.pdf (2.42M)

Word count: 2937

Character count: 16554



PROCEEDING

GRADUATE SCHOOL OF UNIVERSITAS SRIWIJAYA
THE 1ST SRIWIJAYA INTERNATIONAL CONFERENCE
ON ENVIRONMENTAL ISSUES
(1ST SRICOENV 2018)

September

26-27, 2018

Horison Ultima Hotel,
Palembang, Indonesia



our partners :



YAYASAN
Belantara

BPJS Kesehatan
Badan Penyelenggara Jaminan Sosial



BANK
SUMSEL BABEL

Conference name : The 1st Sriwijaya International Conference on
Environmental Issues
Venue : Hotel Horison Ultima Palembang, South Sumatera,
Indonesia
Date : September 26-27th, 2018

Group Picture



Chairman : Hermansyah, PhD
Universitas Sriwijaya, Indonesia

Advisory Committee:

Junyamin Tar'an (University of Saskatchewan, Canada)
Rashid Mehmood (Ottawa Hospital Research Institute, Canada)
Tsukasa Inaoka (Departemen of Human Ecology, Saga University, Japan)
Anis Saggaff (Universitas Sriwijaya, Indonesia)
Zainuddin Nawawi (Universitas Sriwijaya, Indonesia)

Steering Committee:

Nurul Huda (Universiti Sultan Zainal Abidin, Kuala Trengganu, Malaysia)
Suryo Purwono (Universitas Gajah Mada, Indonesia)
Prosono (Institut Teknologi Bandung, Indonesia)
Nimmi Zulfainarni (Institut Pertanian Bogor, Indonesia)
Ratna Juwita (Universitas Indonesia, Indonesia)
Fakhili Gulo (Universitas Sriwijaya, Indonesia)
Iskhaq Iskandar (Universitas Sriwijaya, Indonesia)
Aldes Lesbani (Universitas Sriwijaya, Indonesia)
Siti Nurmaini (Universitas Sriwijaya, Indonesia)
Benyamin Lakitan (Universitas Sriwijaya, Indonesia)
Rujito A. Suwingnyo (Universitas Sriwijaya, Indonesia)
M.T. Kamaluddin (Universitas Sriwijaya, Indonesia)

Preface

Environmental issues such as climate change or global warming is the greatest universal problem over the world. How we respond to this crisis will greatly impact both current and future generations.

The 1st Sriwijaya International Conference on Environmental Issues has been held to provide a vehicle the state of the art in research results and trends environmental and climate change topics, to offer interaction, discussion and possible collaboration among researchers in the future. This conference was held on September 26-27th, 2018 in Hotel Ultima Horison Palembang, South Sumatera, Indonesia hosted by Graduate School of Universitas Sriwijaya, Indonesia with co-organizer and ¹ Thai Nguyen University of Agriculture and Forestry Vietnam and ² Universiti Sultan Zainal Abidin Malaysia as Co-organizer. Participants of this conference was ³ a combination of academics/researchers, development practitioners, community/civil society representatives, and ³ national and local government units and non-government organizations.

This conference consists of 6 keynotes speakers from Germany, Malaysia, Vietnam and Indonesia, and 94 selected participants as oral presenters. For the selected articles will be published in Environment, Energy and Earth Sciences (E3S) Web of Conferences (Scopus and Thomson Reuters- indexed proceeding). Keynotes and participants presented topics related to following topics: 1) Promoting Environment System ; 2) Strengthening People-Environment Inter-Relationship; 3) Reducing Global Warming Effect; 4) Mitigation and Adaptation in Climate Change in Wetland. This conference was a great opportunity not only for sharing knowledge and experience in environmental research, but also for starting a long and fruitful cooperation and friendship among participants.



Hermansyah, PhD
Chair personman of the 1st Sriconv.

2 Evaluation of Land Subsidence Impact at Lowland Areas Using Analytical Hierarchy Process (AHP) Method

Andriani^{1,2}, Eddy Ibrahim³, Dinar Dwi Anugerah Putranto⁴, and Azhar Kholiq Affandi⁵

¹Postgraduate Program of Environmental Science, Universitas Sriwijaya, Palembang, Indonesia

²Civil Engineering Departement, Andalas University, Padang, Indonesia

³Minning Engineering Departement, Universitas Sriwijaya, Palembang, Indonesia

⁴Civil Engineering Departement, Universitas Sriwijaya, Palembang, Indonesia

⁵Physics Departement, Universitas Sriwijaya, Palembang, Indonesia

Abstract. Land subsidence is a problem that often occurs in lowland areas. The impact of land subsidence causes losses in the economic, physical, ecological and social aspects. The impact of land subsidence could be felt directly and indirectly by the people, so an evaluation of the most frequent (dominant) impacts needs to be done. One method that could be use for assesment using AHP, using pairwise comparisons can be obtained the most frequent (dominant) land subsidence impact. From the results of the study indicate that the direct impact due to land subsidence (weight 0.608) is more dominant than the indirect impact (0.392). Based on the value of each parameter, three dominant land subsidence impacts are infrastructure damage with a value of 0.387, an increase in the cost of infrastructure construction and maintenance with a value of 0.193 and a flood of 0.129. The results of observations and ground checking at the Tanjung Api-Api area, there was damage to several floors of residents' homes, damage to road and tilt of trees which were damaged in the economic field was the most dominant impact. While floods and seawater intrusion are not dominant in this area because the area is located in the tidal area.

1 Introduction

Tanjung Api-Api is one of the lowland areas in South Sumatra which is located on the east coast of Sumatra Island. Lowlands have a crucial function into environmental management because lowlands are able to accommodate and provide water, prevent coastal abrasion, prevent sea water intrusion, oxygen providers and have unique biodiversity [1,3]. Development of lowlands to be built-up areas will trigger various problems, one of it is land subsidence. Land subsidence causes direct and indirect impacts to environment, such as infrastructure damage as cracks in buildings and floor, cracks on the road, damage to drainage and increased of construction costs [4,5,6] and also causing flooding and widespread flood areas, sea water intrusion, damage to the drainage system and caused

²
*Corresponding author: andriani,stmt@gmail.com

deformation at building construction so that it has an impact on the economic and social life [2,9,10,11,14,15,16].

To evaluate the dominant/ crucial impact of land subsidence could be used Analytical Hierarchy Process (AHP) Method. Analytical Hierarchy Process is a multilevel structure method in determining decisions using complex multi criteria. Evaluation of land subsidence impact is very crucial to determine the appropriate mitigation strategy. The weighting and scoring of each parameter will make it easier to determine the decision to be chosen [13].

The analytical hierarchy process and sensitivity analysis (AHP-SA) could be used to evaluate the risk of land subsidence, with weighting and scoring from multicriteria parameters of causes of land subsidence [11]. To determine the weight of all criteria in the assessment of the hazard of land subsidence, it is done by fuzzy AHP so that the consistency of the matrix and convergence speed have a high degree of accuracy [7]. To solve the problem of assessment matrix consistency and factor weight uncertainty could be used an improved fuzzy analytic hierarchy process, so that it could evaluate the risk of land subsidence and the related preventive measures are adopted [8]. Disaster Risk Assessment is carried out using Analytic Hierarchy Process (AHP) and GIS can help in developing prevention and risk management techniques [12].

Changes in land use/land cover due to the development of the Tanjung Api-Api area as a special economic area caused environmental degradation. Land subsidence is caused by several factors, namely natural and human factors [1,3,4,5,6,12]. The conversion of lowlands to built-up areas will lead to increased building loads, increased population and increased demand for water so that it can trigger land subsidence in the region. To determine the vulnerability of the area due to land subsidence and the impact it will cause, an evaluation needs to be done, one of which is by using the Analytic Hierarchy Process (AHP) method.

2 Materials and Methods

The data used in this study are primary data in the form of questionnaires from geotechnical, environmental and construction experts. The number of experts used in this study were 10 expert. Weighting each criterion is done using AHP. To validate AHP results, field observations and ground check were carried out in the field. The steps for completing AHP are as follows:

- a. Literature review to determine the impact of land subsidence
- b. Establish a hierarchical structure of land subsidence impact. Decision Making hierarchy consisting of:
 - Level 0 is the goal 1 of the decision making process
 - Level 1 is a decision-making criterion, both quantitative and qualitative criteria.
 - Level 2 is a sub-criterion that describes the parts of the criteria
 - Level 3 is the alternatives that will be covered or decided in the research.
- c. Weighting of the predetermined criteria by comparing criteria one with other criteria (pairwise comparison) with AHP scale 1 to 9.
- d. Checked of the consistency ratio of each questionnaire (CR <0.1, if CR > 0.1 then the questionnaire must be repeated).
- e. Calculating of the geomean of each parameter by using the formula:

$$\text{Geomean} = (y_1 \cdot y_2 \cdot y_3 \dots y_n)^{1/n} \quad (1)$$

Where as : y_1 = expert 1, y_2 = expert 2, n = number of experts

f. After of obtained the main priority in the form of the dominant of land subsidence impact, then validation is carried out by conducting observations and checking in the field.

Figure 1 showed the hierarchical structure of the assessment of land subsidence impact using the Analytical Hierarchy Process (AHP) method.

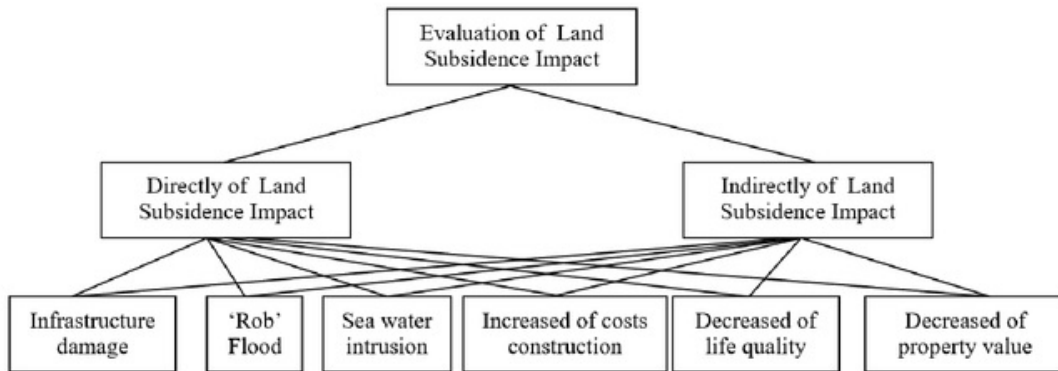


Fig. 1. Decision of hierarchy based on Analytical Hierarchy Process (AHP) Method.

After obtained result of the dominant impact of land subsidence using the AHP method, and then validation is done by observed the impact of land subsidence that has occurred in the area of Tanjung Api-Api. Figure 2 showed the location of observations in the field.

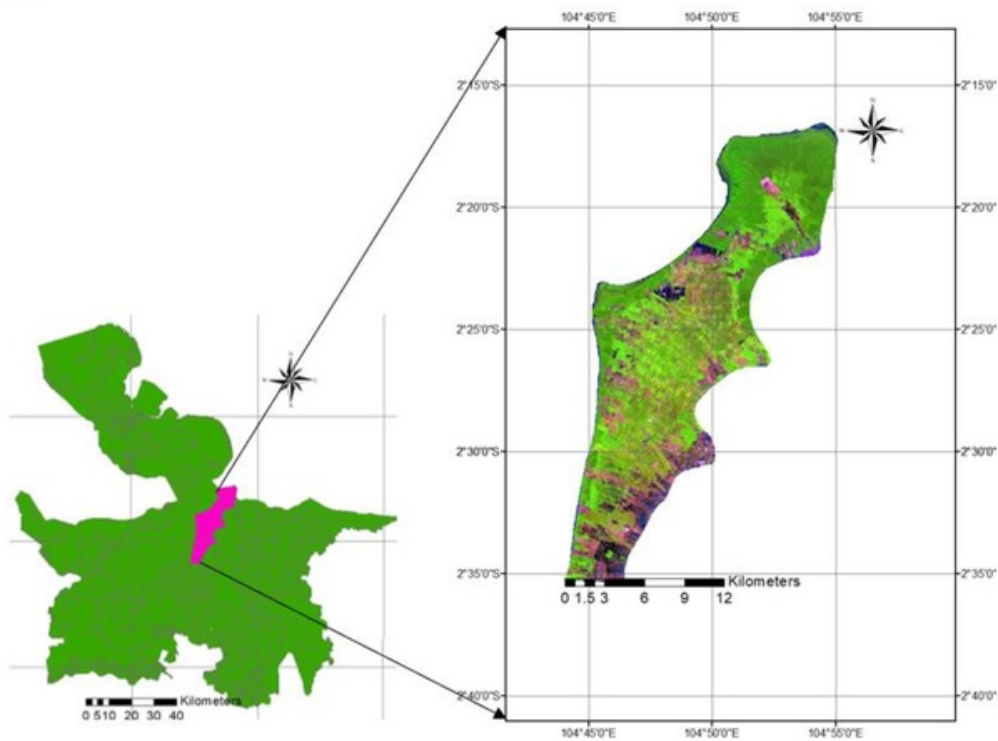


Fig. 2. Location of Study Area at Tanjung Api-Api.

3 Results and Discussions

Land subsidence could caused technical and non-technical impacts, causing economic and social losses. The impact of land subsidence could be felt directly and indirectly by the people. In general, technical and environmental impacts are impacts that are felt directly by the community, such as damage to buildings/infrastructure, tidal flooding and sea water intrusion. While the economic and social impacts were impacts that are not directly felt by the people. AHP is one solution that could be used to evaluated dominan impact of land subsidence. Table 1 showed the results of the land subsidence impact with AHP.

Table 1. Results of Evaluation Land Subsidence Impact Using with AHP.

Impact of Land Subsidence	Weight	Score
Direct Impact of Land Subsidence		
1. Damage of Infrastructure	0.608	0.638
2. Rob Flood		0.211
3. Intrusion of Sea Water		0.151
Indirect Impact of Land Subsidence		
Increased costs of construction and maintenance of infrastructure	0.392	0.491
2. Decreased of life quality		0.311
Decreased of property and infrastructure value		0.198
Total		1.000

Table 1 showed that the direct impact of land subsidence is more dominant than indirect impacts, direct impacts are impacts that can be felt and seen directly by the community. In Figure 3, the direct impact that dominan occurs due to land subsidence is damage to buildings / infrastructure compared to the effects of tidal floods and intrusion of sea water.

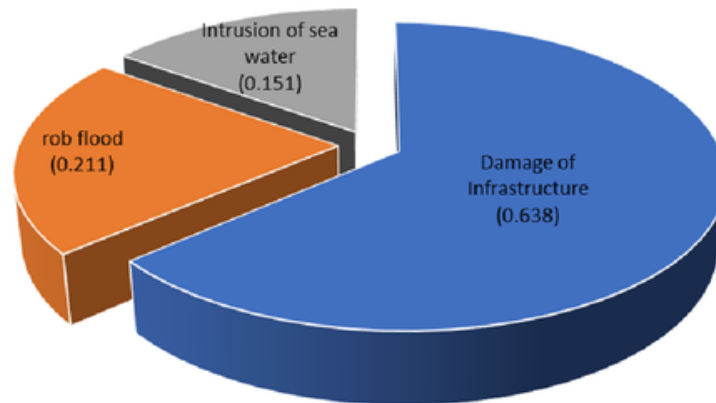


Fig. 3. Evaluation of Direct Impact of Land Subsidence with AHP.

Observations at Tanjung Api-Api area showed that the impact of land subsidence that had been felt by the people at the study area was the presence of cracks on the floor of the house/office building Figure 4a, damage to several road sections Figure 4b, and many coconut trees is tilt Figure 4c.



Fig. 4. Direct Impact of Land Subsidence.

The results of the assessment with AHP provide significant results with observations in the field that the dominant impact that occurs is damage to infrastructure. Based on observations in the field results obtained that during the dry season the taste of water is salty because to the entry of sea water into the river but not due to sea water intrusion, it is because this area is in tidal areas and flooding often occurs due to tides but quickly dries.

The indirect impact of land subsidence is the increased cost of infrastructure construction and maintenance with a weight of 0.491. The higher the damage to infrastructure causes the greater costs required to repair damage to buildings, roads and other infrastructure. The costs of maintenance for infrastructure and facilities are higher and special construction is needed to deal with the damage. The direct impact of land subsidence caused a decrease in quality of life and the environment such as health, sanitation and comfort conditions with a weight of 0.31 and caused a decrease in the value of property and infrastructure.

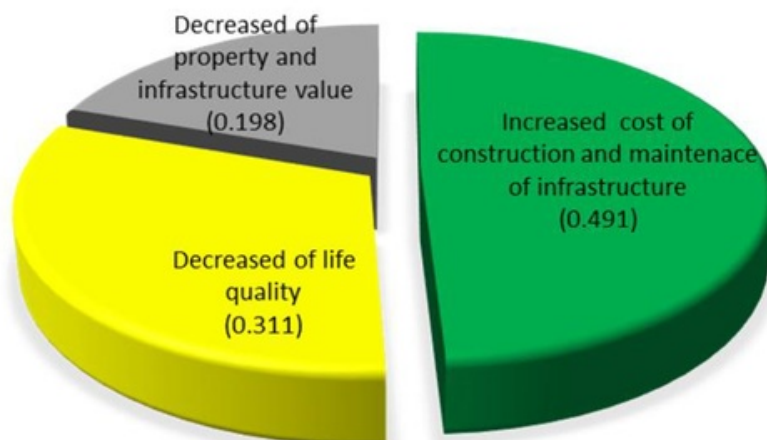


Fig. 5. Indirect Impact of Land Subsidence.

Figure 6 showed the results of the overall evaluation of land subsidence impact. The results from the multiplication between the weight of the criteria with the subcriteria score showed that there are three dominant impact that will occur due to land subsidence i.e. infrastructure damage, increased costs of infrastructure development and maintenance and flooding caused by tidal.

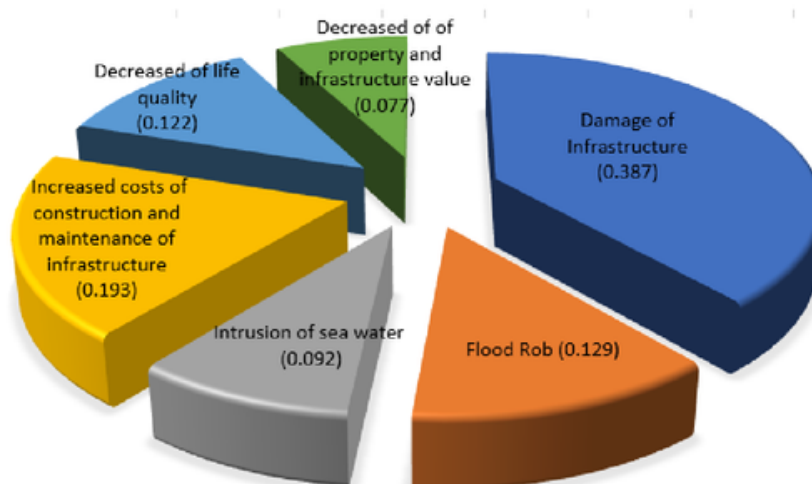


Fig. 6. The Overall Evaluation of Land Subsidence Impact.

Evaluation of land subsidence impact using the AHP method provides significant results with observations in the field. AHP Method can be used to assess the risks and impacts of land subsidence so that could be determined the most appropriate mitigation method in lowland areas.

4 Conclusions

Lowland is the area that susceptible to land subsidence, based on the AHP method and observations at study area gave the conclusions are following : 1) the direct of land subsidence impact (weight 0.608) was more dominant than the indirect impact (weight 0.392), 2)the most of directly impact occurs was the most damage to infrastructure with a weight of 0.638. While the indirect impact due to the most dominant land subsidence is the increase in the cost of infrastructure construction and maintenance with a weight of 0.491, 3) the results of observations in the Tanjung Api-Api area showed that the dominant impact of land subsidence is damage to buildings and crack of the road, while sea water intrusion and occur of flooding very small, and 4) the Analytical Hierarchy Process (AHP) method could be used to evaluated the dominant impact of land subsidence, because it provides significant results with observations in the field.

Acknowledgments

On this occasion the author would like to thank for all the experts who have been involved and supported this research.

References

1. A. Fulton, *Land Subsidence : What is It and Why is It an Important Aspect of Groundwater Management* (griculture and Natural Resources, University of California, 2006)
2. F. Raspini, C.Loupasakis, D.Rozos and S.Moretti. *J. Natural Hazards and Earth System Science* **13** (2013)
3. F. Yulianto, M.A. Marfai. *Jurnal Ilmiah Geomatika* **17** (2015)

4. H. Z. Abidin¹, I. Gumilar¹, H. Andreas¹, D.Murdohardono and Y.Fukuda. *J. Environ Earth Sci* **68** (2013)
5. H. Z. Abidin¹, H. Andreas¹, I. Gumilar¹, and J. Brinkman. *J. IAHS* **372** (2015)
6. I. Gumilar, H.Z. Abidin, T.P.Sidiq, H.Andreas, R.Maiyudi, M.Gamal and Y.Fukuda, *Journal of Geospatial* **2** (2013)
7. H.M. Wang, Y.Wang, X.Jiao and G.R. Qian. *J. Desalination and Water Treatment* **52** (2014)
8. J. Liu, H. Wang and X.Yan *J. IAHS* **372** (2015)
9. K.Karila, M. Karjalainen, and J. Hyypa. *Journal of Finland* **19**, **2** (2005)
10. L.Bayuaji, J.T.S.Sumantyo and H.Kuze. *J. Canadian Journal Remote Sensing* **36**, **1** (2010)
11. L.Zhu, Y.Chen, H.L. Gong, C.Liu and R.Wang, *Spatial risk assessment on land subsidence in Beijing, China*, 20th (International Congress on Modelling and Simulation, Adelaide, Australia, 2013)
12. R. Bhattarai, A.Kondoh.*J. Advances in Remote Sensing* **6** (2017)
13. T.L.Saaty. *J. Services Sciences* **1**, **1** (1980)
14. Y.Yang. *J. Urban Geol* **1** (2015)
15. Y.Ito, H.Chen, M. Sawamukai, T.Tokunaga. *J. Proc. IAHS* **372** (2015)
16. Z. Ramadhani, Y. Prasetyo, B.D. Yuwono, *Analisis Korelasi Spasial Dampak Penurunan Muka Tanah Terhadap Banjir Di Jakarta Utara* (Jurnal Geodesi Undip , 2017).

Evaluation of Land Subsidence Impact at Lowland Areas Using Analytical Hierarchy Process (AHP) Method

ORIGINALITY REPORT

9%

SIMILARITY INDEX

9%

INTERNET SOURCES

%

PUBLICATIONS

%

STUDENT PAPERS

PRIMARY SOURCES

1

sricoenv.conf.unsri.ac.id

Internet Source

6%

2

www.matec-conferences.org

Internet Source

2%

3

tuaf.edu.vn

Internet Source

1%

Exclude quotes On

Exclude matches < 5 words

Exclude bibliography On