

BUKTI KORESPONDENSI
ARTIKEL JURNAL INTERNASIONAL BEREPUTASI

Judul Artikel : Technical Efficiency and Factors Affecting Rice Production in Tidal Lowlands of South Sumatera Province Indonesia

Jurnal : Potravinarstvo Slovak Jurnal of Food Sciences

Penulis : Khairul Fahmi Purba, Muhammad Yazid, Mery Hasmeda, Dessy Adriani, Meitry Firdha Tafarini

No.	Perihal	Tanggal
1	Bukti Technical Efficiency Manuscript	6 Januari 2020
2	Bukti Technical Efficiency Manuscript Submission	28 Januari 2020
3	Bukti Manuscript Submission ORCHID	28 Februari 2020
4	Bukti Technical Efficiency Manuscript Revision	14 Desember 2020
5	Bukti Konfirmasi Manuscript Publication	17 Januari 2021
6	Bukti Manuscript Acceptance dan Published Online	16 November 2021 dan 28 Januari 2021

Technical Efficiency Manuscript
(6 Januari 2020)

TECHNICAL EFFICIENCY AND FACTORS AFFECTING RICE PRODUCTION IN TIDAL LOWLANDS OF SOUTH SUMATRA PROVINCE INDONESIA

Khairul Fahmi Purba, Muhammad Yazid, Mery Hasmeda, Dessy Adriani, Meitry Firdha Tafari

ABSTRACT

Rice has been the staple food for most Indonesian. The rice consumption in Indonesia is considerably high. Rice is cultivated in many agroecosystems, including tidal lowlands. Some tidal lowlands are considered suitable for rice cultivation. Therefore, tidal lowlands may support food security in Indonesia. However, productivity remains a problem in which inputs are not used efficiently. This study aims to determine technical efficiency and identify factors affecting rice production in tidal lowlands of South Sumatra, one of main rice barns in Indonesia. A survey was conducted by interviewing 93 farmers in Telang Rejo Village. A data envelopment analysis (DEA) with output oriented and variable return to scale (VRS) approach was applied to measure technical efficiency score from each farm observed. An Ordinary Least Square (OLS) regression with Cobb-Douglas production function approach was employed to analyze the factors affecting rice production in tidal lowlands of South Sumatra Indonesia. The results showed that majority of rice farms in tidal lowlands of South Sumatra Indonesia was inefficient. There were 44 rice farms (47,31%) that were efficient, 5 rice farms (5,38%) that were inefficient under increasing return to scale and 44 rice farms (47,31%) that were inefficient under decreasing return to scale. The input such as Nitrogen fertilizer, Phosphorus fertilizer and Potassium fertilizer, herbicide, insecticide and fungicide had positive significant influence respectively on rice production in tidal lowlands of South Sumatra Indonesia.

Keywords: technical efficiency; rice production; tidal lowlands; data envelopment analysis

INTRODUCTION

Rice is a staple food and livelihood platform for Asian countries like Vietnam, Indonesia, Pakistan and others (Roy, Chan and Rainis, 2014; Roy, Chan and Xenarios, 2016; Al-Mashadani and Mahmood, 2019). Rice still becomes income source for rural society in Indonesia. Therefore, it has a strategic position. Moreover, Rice also contribute 9,5% of Gross Domestic Product of Indonesia (Adriani and Wildayana, 2015; Central Bureau of Statistics of Indonesia, 2019). According to government regulation #12 of 2012 concerning food, the Indonesian government is obligated to guarantee availability, affordability, and fulfillment of food consumption for all Indonesians. However, consumption rate of rice is very high in Indonesia. A rice consumption of Indonesia approximately achieved 29,13 million tons or 111.58 kg per capita per year (Central Bureau of Statistics of Indonesia, 2017). A population rate increasing caused rice consumption increase too. In the same time, a high land conversion causes unstable rice production for fulfilling rice consumption in Indonesia. It means the government must take an appropriate decision or policy for solving those problems.

One of solutions taken by government is the developing agriculture in suboptimal land of Indonesia. One of the suboptimal land in Indonesia is tidal lowland. Tidal lowland is swamp land reclaimed and takes place between land and sea. Therefore, tidal lowland depends on the up and down of tide. Tidal lowland has potential to support food security in Indonesia. One of available tidal lowlands of Indonesia is in South Sumatra Province. Based on data, a total of tidal lowland area is 266,674 hectares in South Sumatra. A large number of tidal lowlands in South Sumatra is in Banyuasin Regency. Based on the report of statistics, the total of tidal lowlands in Banyuasin is 161,917 hectares (Central Bureau of Statistics of Banyuasin Regency, 2018). Due to available total area of tidal lowland is large, it is expected become a food barn of Indonesia. On the other hand, tidal lowland is still not reclaimed yet in large total. It is caused by peat containing in tidal lowland. Therefore, Many tidal lowlands may not be utilized (Susanto, 2003)

One of locations for tidal lowlands is in Telang Rejo Village, Delta Telang I, South Sumatra Province of Indonesia. This location is a reclamation project in the 1970s involving transmigration program from Java Island to Sumatra Island (Scholz, 1980; Wildayana, Adriani and Armanto, 2017; Wildayana and Armanto, 2018). Telang

Rejo Village has tidal lowlands in type A. The type A is a tidal lowlands suitable for rice cultivation (Imanudin and Armanto, 2012). It is caused by tidal lowland that overflowed both large and small tide at all the time (Irwandi, 2015).

Beside the good potential of tidal lowland, the constraints and threats exist such as rice productivity of tidal lowlands is still low. The rice productivity of tidal lowland is approximately 4,10 to 4,43 ton per hectare. Whereas, the average of rice productivity is 8 ton per hectare (Wildayana and Armanto, 2019). The difference between actual and expected production was caused by inefficient use of input (Majumder et al., 2016) The other problems of rice cultivation in tidal lowlands are soil acidity, nutrient deficiency, salinity and Pyrite (Fe₂S) content (Armanto et al., 2013; Armanto, 2014; Wildayana and Armanto, 2018). Furthermore, the water was unsuitable for the crop need on rice cultivation in tidal lowlands agriculture (Yazid et al. 2015). There is no technology recommendation based location such as fertilizer, variety of rice, land clearing and management, and also water management (Oemar, 2003). They are causes of inefficient use of agricultural input on rice production in tidal lowland agriculture.

Studies regarding technical efficiency of rice production become important for estimating the efficiency level of rice production in tidal lowland agriculture. Technical efficiency refers to achieve a total of potential output though combination a total of available input (Iráizoz, Rapún, and Zabaleta, 2003). If a business or enterprise can improve output by input use optimally, the business is efficient (Coelli et al., 2005). Some studies regarding technical efficiency of rice production in Indonesia had been conducted among (Erwindodo, 1990; Squires and Tabor, 1991; Trewin et al., 1995). Even through many studies regard efficiency of rice production in Indonesia but there is only a little of them discussing efficient of rice production in tidal lowlands of South Sumatra especially. This previous study investigated phenomena in Java Island with technical irrigated land agroecosystem. On the other hand, this study investigates a case of Sumatra Island with the suboptimal land agroecosystem which is tidal lowlands. Therefore, this study is very important to be conducted.

Scientific hypothesis

There were two hypotheses in this study:
 1.70% of rice farms in tidal lowlands of South Sumatra Indonesia are efficient in constant return to scale condition
 2.Land area, seed, fertilizer of N, fertilizer of P, fertilizer of K, herbicide, insecticide, fungicide and labor significantly affect rice production in tidal lowlands of South Sumatra Indonesia

MATERIAL AND METHODOLOGY

Location

This study was conducted in Telang Rejo Village, Banyuasin Regency, South Sumatra Province of Indonesia. There are some consideration in choosing the location :

- 1.This location has tidal lowland in type. This location is suitable for rice cultivation.
- 2.This location is well known as food barn and production centre of tidal lowland rice for Banyuasin Regency.
- 3.This location is one of the most wide village in tidal lowland agriculture of South Sumatera.

4.Telang Rejo is one of transmigration project villages in the 1970s. Tidal lowland in Telang Rejo was reclaimed to transmigrants from Java Island to Sumatra Island.

5.Water management was build by agency of public work though grants from government. The map of study site is in Figure 1.

Data Collection

Data was obtained by interviewing 93 farmers in Telang Rejo. They were selected randomly. This study used a questionnaire as a tool of research. This study was assisted by 5 master degree students as enumerator. The variables used in this study consisted one dependent variable (Y) and nine independent variables (X). The dependent variable was rice production of tidal lowland (Coelli et al. 2005). The independent variables were land area(Thanh Nguyen, Hoang and Seo, 2012), seeds (Duangbootsee and Myers, 2014), chemical fertilizers which are N, P and K (Hoang and Alauddin, 2012; Hoang and Nguyen, 2013; Jansen et al., 2006), pesticides and labor (Rios and Shively, 2005; (Duangbootsee and Myers, 2014).

Technical Efficiency

Efficiency is the ratio between output and input. If the ratio is high, the efficiency score will be high. Efficiency score is between 0 to 1. It can be defined mathematically $0 \leq TE \leq 1$. Efficiency score can be obtained by (Arnade,1994):

$$Efficiency = \frac{\sum_k u_k y_{k,j}}{\sum_i v_i x_{i,j}}$$

Where :

y = output

x = input

u, v = average weight

i,j,k = 1,2,3,...n

Data Envelopment Analysis (DEA)

Data Envelopment Analysis (DEA) is a method to estimate efficiency with linear programming nonparametric approach (Charnes, Cooper and Rhodes 1978; Charnes, Cooper and Rhodes, 1979) DEA identifies the best frontier solution involving all observation of Decision Making Units (DMUs). Therefore, it is called envelope model. DEA model also can be applied to estimate efficiency or performance in some sectors such as hospital (Gholami, Higón and Emrouznejad, 2015; Khushalani and Ozcan, 2017), school (Fatimah and Mahmudah, 2017), construction (Hu and Liu, 2016), banking (Wanke and Barros, 2014; Avkiran, 2015), port operation (Rajasekar and Deo, 2014; Nguyen et al., 2016), industry and manufacture (Kotey and O'Donnell 2002) and the others. DEA was also applied widely to estimate farm and agriculture performance worldwide (Kočíšová, 2015; Wang et al., 2017, Wang et al., 2018; Adeyonu et al., 2019;). DEA was used as a tool for decision making in a business, organization, and government as well. DEA has some advantages. DEA can be applied simultaneously by multiple input and output. without need to determine weight previously. Furthermore, DEA did not need a functional form and specific production function such as input-output relationship.

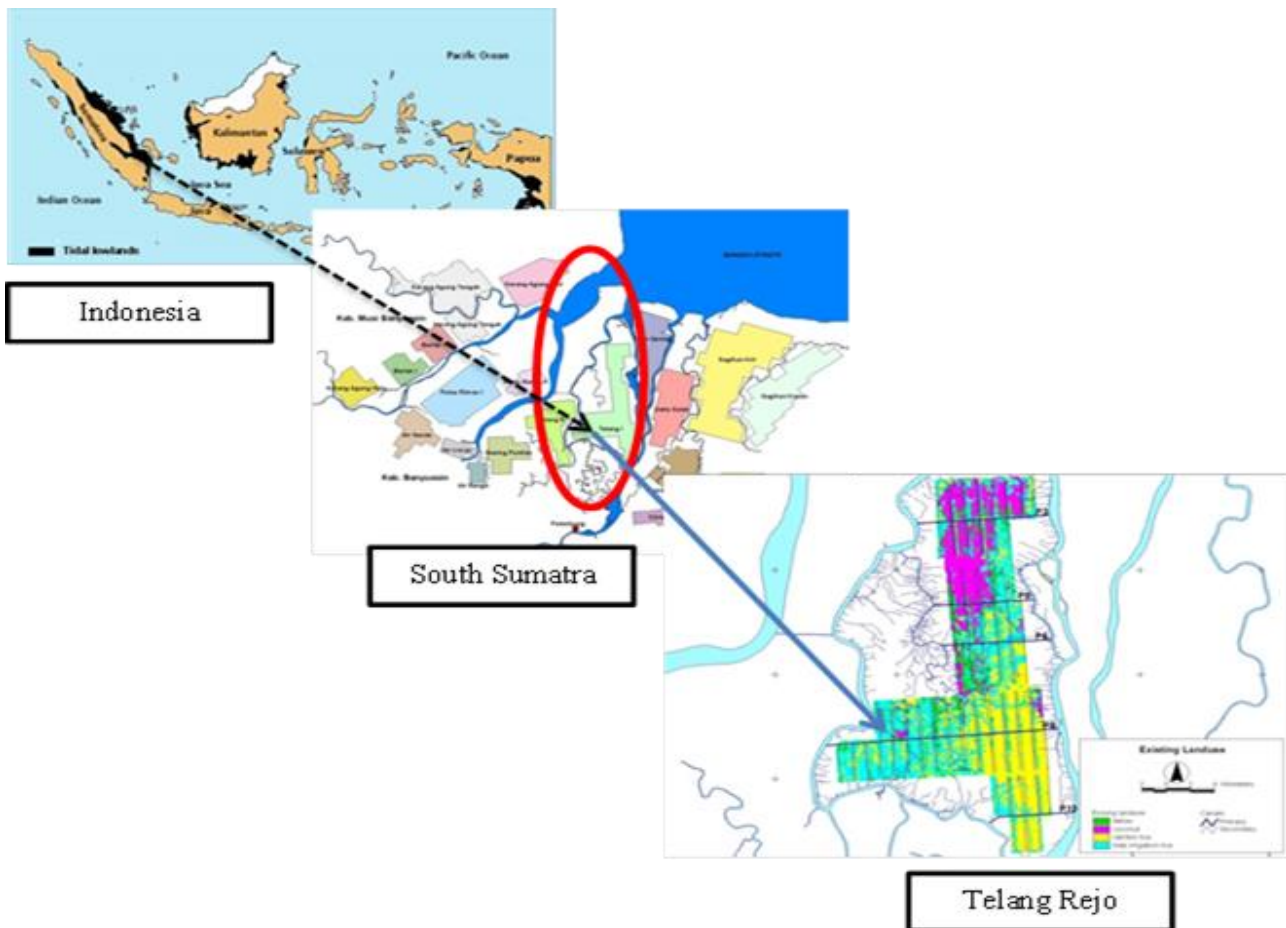


Figure 1 Location of study

DEA was divided by 2 orientations. The first is oriented input. It minimizes input to achieve potential output level. The second one is oriented output. It maximizes output bundle while keeping input level constant. We can conclude that both of them minimize input and maximize output for achieving efficiency. According to the explanation, We can conclude that DEA model oriented input focused on operational and managerial problem while DEA model oriented output regards to planning and strategy (Cullinane, Song and Wang, 2005).

Assumption on DEA model exists 2 types. They are constant return to scale (CRS) and variable return to scale (VRS). This assumption will affect the envelope frontier. CRS is defined as a proportion of input addition equaling proportion of output addition. VRS is defined as production technology showing increasing, constant or decreasing return to scale. The VRS assumption is appropriate for agriculture study because agricultural production may occur in 3 situations which are increasing, constant or decreasing return to scale.

DEA model in this study applied oriented output. The model can be defined as (Färe, Grosskopf and Lovell, 1985; Ali and Seiford, 1993; Färe et al., 2017; O'Donnell, 2018):

$$\text{Max } \theta_i \dots\dots\dots (1)$$

Subject to:

$$u_{jm} \leq \sum_{j=1}^j z_j u_{jm} \dots\dots\dots (2)$$

Where :

- θ = output efficiency of DMU's being estimated by DEA
- u_{jm} = amount of output m produced by DMU j
- z_j = intensity variable for DMU j
- $j, m = 1, 2, 3, \dots, n$

The model obtained is CCR or CRS model. To transform model to be VRS or BCC Model, this constraint in below should add in the model.

$$\sum_j \lambda_j = 1 \dots\dots\dots (3)$$

DEA model with oriented output and VRS approach estimated technical efficiency through measuring potential output by DMU. The level of input (λ) is kept constant so it obtained 3 stages of production, namely increasing, constant or decreasing return to scale.

Ordinary Least Square (OLS)

The use of OLS is widely applied by many scholars. OLS is a method to identify the factors affecting agricultural production. OLS is also used as a second phase analysis of the DEA. According to Banker, Natarajan and Zhang (2018) that application of combination between DEA and OLS is better than the Simar-Wilson model in measuring productivity in second stage. The application of OLS is also more consistent when combined with DEA in second stage (Simar and Wilson, 2007). The OLS equation used in this study is the Cobb-Dougllass production function equation. We can define as :

$$Y=f(X_1, X_2, X_3 \dots X_n) \dots \dots \dots (4)$$

$$Y = \beta_0 X_1^{\beta_1} X_2^{\beta_2} X_3^{\beta_3} \dots X_n^{\beta_n} \dots \dots \dots (5)$$

Estimation of OLS equation above was transformed in natural logarithm (Ln). It was created to obtain the equation or model easier (Koutsoyiannis, 2001).

$$\ln Y = \ln \beta_0 + \beta_1 \ln X_1 + \beta_2 \ln X_2 + \beta_3 \ln X_3 \dots \beta_n \ln X_n \dots \dots \dots (6)$$

Where :

- Y = Production
- β_0 = Intercept
- $\beta_1, \beta_2, \beta_3 \dots \beta_n$ = Parameter
- $X_1, X_2, X_3 \dots X_n$ = Input
- n = 1, 2, 3, ... n

Statistical analysis

The software used for data analysis program in the study was Data Envelopment Analysis Program (DEAP) software version 2.1. The software was developed by Tim Coelli from Centre of Efficiency and Productivity Analysis in the University of Queensland, Australia. In addition, Statistical Package for Social Science (SPSS) version 23 also used for OLS analysis. The p-value used in OLS analysis was $p < 0.01; 0.05$ and 0.10

RESULTS AND DISCUSSION

Characteristics of farmers

Based on the table 1, it could be seen that farmers were in productive age. The majority of farmers aged 40-49 years. The household size was 2 people in majority. A small percent of respondents who are elderly whose wife or husband has passed away live alone. These respondents normally have children who have married and live nearby. A few percent of respondents have 4 children or more. These respondents normally are middle aged with children who are still young and unmarried. However, the education of farmers is still relatively low. It was indicated by the length of education only 4 to 7 years which means it is still in the primary school. Then, the majority of farmers had 11-20 years of farming experience. It was caused by farmers in Telang Rejo Village are the second and third generation of transmigrants of the transmigration project from Java Island to Sumatra Island in the 1970s. The land status of farmers in Telang Rejo Village was significantly private property. It happened because at the beginning of the transmigration program each household was given 2 hectares of reclaimed tidal lowlands by the government.

Table 2 showed agricultural input use and output produced in tidal lowlands of Telang Rejo Village. According to rice check of Indonesia and fertilizer recommendation for rice cultivation on wetland released by the Ministry of Agriculture of Indonesia stated the use of fertilizer of N, P and K are 200 kg, 75 kg and 50 kg respectively. In fact, the use of the use of fertilizer of N, P and K in tidal lowlands were higher than recommendation. It would be a threat for sustainability and environmental problems in tidal lowlands such as nitrogen surplus and others.

Identification of efficient and inefficient rice farms in tidal lowland

A total of 93 farms had been calculated for each efficiency score using the DEA method. The result of DEA showed

that most of the tidal lowlands rice farming in Telang Rejo Village were generally inefficient. There were only 44 (47.31%) efficient rice farming which were in constant return to scale conditions while there were 49 inefficient farming. Where 44 (47.31%) of those were in decreasing return to scale condition and 5 (5.38%) of those were in increasing return to scale condition. The following table is presented to make it easier to see the results of the DEA.

The 44 rice farms in decreasing return to scale caused by the excess of input use. Then, to achieve efficiency the input uses needs to be reduced. The purpose of reducing input use on them for the law of diminishing return does not be occurred. Whereas for the farms in increasing return to scale (5 rice farms) should increase the input use to achieve efficiency because it is still possible to increase production.

Farm performance can also be divided based on the efficiency score. Jalilov et al. (2019) divided 3 performance using efficiency scores based on: 1) the best performance that has efficiency score between 0.90 to 1.00 or 90% to 100%. Farming in this category was called efficient farming 2) good performance is farming that has an efficiency score of 0.80 to 0.89 or 80% to 89% also included in the efficient category while for 3) bad performance is farming that has efficiency score under 0.79 or 79%. Farming with this score is categorized inefficient. Based on this grouping, there were 68 (73.12%) farms that had efficiency score 90% to 100%. Then, there were 17 (18.28%) farms that have efficiency score between 80% and 89%. Meanwhile, 8 (8.60%) farms had score of less than 79% only. The following graphic was given to show the categorization of rice farming performance on efficiency score.

The bad performance farm occurred due to the input use which is not optimal. The achievement of actual total production was not in accordance with the expected total production. It was further reviewed that bad performance farms were on decreasing return to scale. Then, the good performance farms with each efficiency score of 80% to 89% had worked on optimal input use. Furthermore, the best performance with each efficiency score of 90% to 100% had been on the efficiency frontier (Jalilov et al., 2019).

Factors affecting rice production in tidal lowlands

This study applied an OLS analysis as the second stage analysis of DEA. The classic assumption test (data normality, heterocedasticity and multicollinearity) was applied in OLS model. It was applied to obtain a free errors OLS model. In addition to obtain factors affecting rice production in tidal lowlands, OLS can also obtain an equation of the Cobb-Douglass production function for rice production in tidal lowland. The production functions obtained from OLS analysis were:

$$Y = 127,938,130 X_1^{0.023} X_2^{0.030} X_3^{0.049} X_4^{0.072} X_5^{0.057} X_6^{0.097} X_7^{0.039} X_8^{0.082} X_9^{0.003} \dots \dots \dots (7)$$

Where:

- Y = Tidal lowland rice production (kg/Ha)
- X1 = Land area (Ha)
- X2 = Seed (kg/Ha)
- X3 = N Fertilizer (kg/Ha)
- X4 = Fertilizer P (kg/Ha)
- X5 = Fertilizer K (kg/Ha)
- X6 = Herbicide (L/Ha)
- X7 = Insecticide (L/Ha)

Table 1 Descriptive statistics of farmers in Telang Rejo Village (n=93)

Characteristics	Frequency	Percentage (%)
Age (year)		
20-29	12	12.90
30-39	23	24.73
40-49	36	38.71
50-59	18	19.35
60-69	4	4.30
Household size (individual)		
1	20	21.51
2	34	36.56
3	30	32.26
4	8	8.60
5	1	1.08
Education (year)		
0-3	3	3.23
4-7	52	55.91
8-11	17	18.28
12-15	20	21.51
≥16	1	1.08
Farming experience (year)		
0-10	18	19.35
11-20	38	40.86
21-30	18	19.35
31-40	18	19.35
41-50	1	1.08
Land Status		
Renter	4	4.30
Owner	80	86.02
Renter and Owner	9	9.68

X8 = Fungicide (L/Ha)

X9 = Labor (day/Ha)

Based on OLS analysis, it was found that herbicides had a positive significant influence to rice production in tidal lowlands ($p < 0.01$) Then, Fertilizer P and fungicide had positive significant influence respectively to rice production in tidal lowlands ($p < 0.05$). Furthermore, Fertilizer N, Fertilizer K and Insecticide also had significant influence respectively to rice production in tidal lowlands ($p < 0.10$). Meanwhile, the land area, seeds and labor had not

significantly influence to rice production in tidal lowlands. The table 3 provided information on the results of OLS analysis. Land area had not significant influence on rice production in tidal lowland. It occurred due to many the land used by farmers in Telang Rejo Village were fragmented. The impact of fragmented land was that farmers have difficulty in managing rice farms. It was caused by the scattered land distance. Therefore, the management of rice farms in tidal lowland had become ineffective. This case began when many farmers taken a credit or loan from the

Table 2 Descriptive statistics of input and output (n=93)

Variable	Mean	Std. Deviation	Min.	Max.
Production (kg/Ha)	6,602.15	142.66	3,000.00	10,000.00
Land area (Ha)	4.83	3.52	0.50	20.00
Seeds (kg/Ha)	86.40	18.71	50.00	120.00
Fertilizer N (kg/Ha)	329.57	1.61	50.00	650.00
Fertilizer P (kg/Ha)	223.66	1.14	50.00	500.00
Fertilizer K (kg/Ha)	195.16	1.09	50.00	400.00
Herbicide (L/Ha)	6.90	3.59	2.00	20.00
Insecticide (L/Ha)	6.41	3.83	1.00	17.00
Fungicide (L/Ha)	5.99	3.22	1.00	17.00
Labor (day/Ha)	3.78	3.36	1.00	14.00

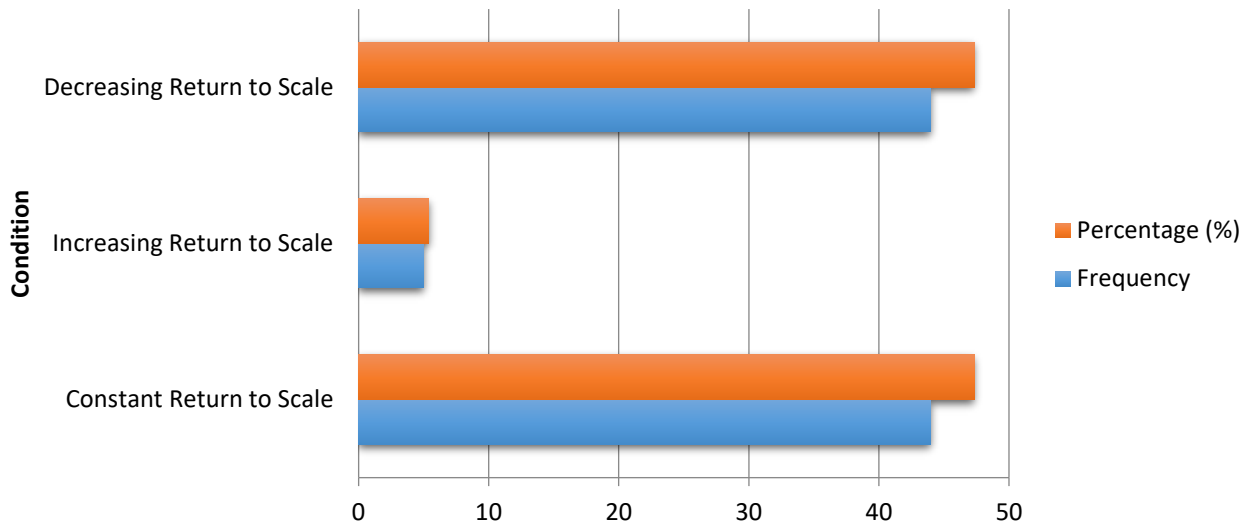


Figure 2 Distribution of farming based on return to scale condition

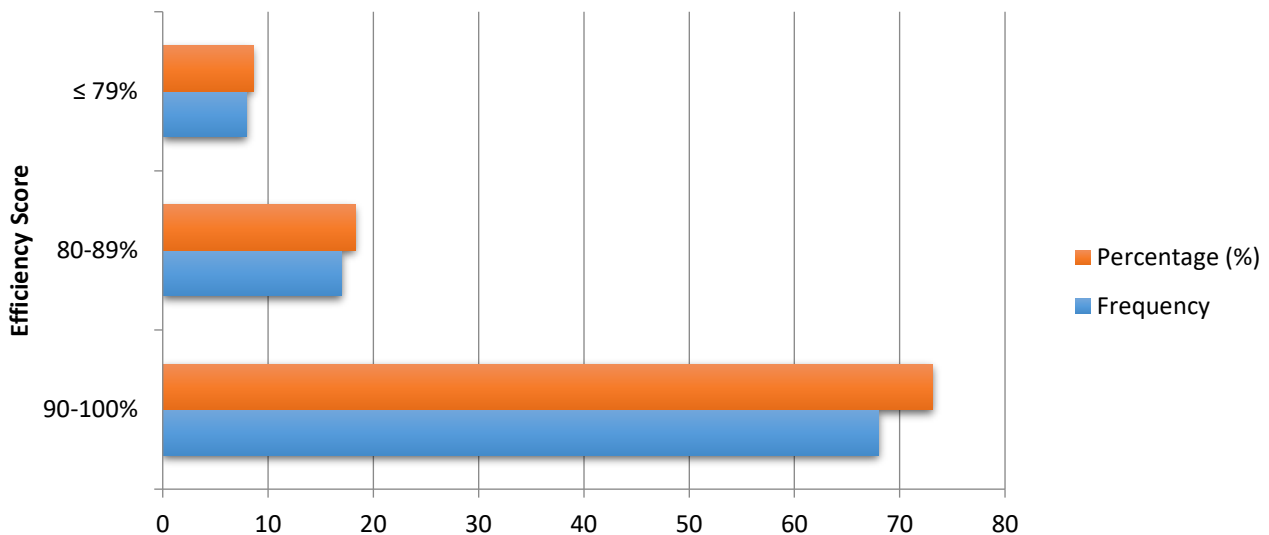


Figure 3 Categorization of rice farming performance based on efficiency score

rich farmer or *toke*. The land became a guarantee in this loan system. It was such an informal credit with high interest. The interest applied by *toke* is approximately 30 % to 40% per year in term of 1 to 5 years. The informal credit absolutely is not profitable for farmers in tidal lowland area. The loan system had terms and condition as agreement between farmer and *toke*. The farmers would not be allowed to cultivate rice in their lands until they were able to pay their loan during time period of loans. The farmers who were not able to pay the loan according to agreement must give their land to *toke*. The case created rich farmers with large land and poor farmers with narrow land. It would be inequality among the farmers in tidal lowlands.

Seed had not significantly affected rice production in tidal lowlands. The use of seeds was very high in rice farms of tidal lowland. The use of excess seeds caused a lot of farms in decreasing return to scale condition. The use of excess seeds was mostly encouraged by cultivating system in tidal lowland. *Tabela* is known well as seedling system by farmers. In fact, the optimal use of seeds was 20 kg to 30

kg per hectare with seeding. *Tabela* was abbreviation from 3 words (*Tebar Benih Langsung*) in bahasa. *Tabela* was done by spreading seed out directly to land without first seeding. When *tabela* was applied, seeds would flow out with water. Therefore, seeds were useless. *Tabela* often known as *sonor*. It was followed by burning land in land preparation (Wildayana, Armanto and Junedi, 2017). This cultivation system was a local wisdom for tidal lowland farmers in Telang Rejo Village. The cultivation system made spacing of crops to be irregular. It caused the rice production of tidal lowlands low. Furthermore, the variety used was also still local variety. The local variety was made by farmers with technology limitation. Whereas one of the problems in tidal lowlands is water need. Tidal lowlands depend on tides. Therefore, water stress intolerant variety is needed by farmers in tidal lowland agriculture to increase rice production.

Labour was also a factor that does not affect rice production in tidal lowland. The available labor force in tidal lowland agriculture is very low. In fact, many

Table 3. The result of OLS analysis

Variable	β	Std. Error	t-stat	p
Intercept	8.107	0.274	29.549	0.000
Land area (X1)	0.023	0.027	0.862	0.391
Seed (X2)	0.030	0.061	0.498	0.620
Fertilizer N (X3)	0.049	0.026	1.885***	0.063
Fertilizer P (X4)	0.072	0.029	2.463**	0.016
Fertilizer K (X5)	0.057	0.032	1.794***	0.076
Herbicide (X6)	0.097	0.031	3.159*	0.002
Insecticide (X7)	0.039	0.022	1.809***	0.074
Fungicide (X8)	0.082	0.032	2.549**	0.013
Labour (X9)	0.003	0.022	0.135	0.893

F-stat = 30.682; R-Square = 0.769; Adjusted R-Square = 0.744; * Significant at $p < 0.01$; ** Significant at $p < 0.05$; *** Significant at $p < 0.10$

transmigrant farmers sold their land and farms given by the government to return to their homeland in Java Island. Then, many farmers migrated to find other work in the capital city of South Sumatra Province (Palembang). Therefore, labor force for agriculture and farming in Telang Rejo Village was not available. Moreover, some farmers changed their job from agricultural jobs to non-agricultural jobs. The majority of them worked in construction in the capital city of South Sumatra or became workers on an engine boat in the Musi River. Musi River is the longest river of South Sumatra. It is also used as transportation like Mekong River in Vietnam. The other cause was agricultural mechanization. Many farmers used machines for land preparation, harvesting and others.

CONCLUSION

This paper concluded that rice production on tidal lowlands was inefficient. Only 47.31% of rice farming were efficient. They were in constant return to scale. Meanwhile, 5.38% of rice farming were inefficient under increasing return to scale and 47.31% of rice farming were inefficient under decreasing return to scale. The factors affecting rice production in tidal lowlands are fertilizer N, fertilizer P, fertilizer K, herbicides, insecticides and fungicides. In terms of policy implications, the need for tolerant variety for tidal lowlands, subsidy of fertilizer, seed nursery training by agricultural extension and also policies regarding the use of agricultural input included doses and the others so that rice production in tidal lowlands can be improved to achieve efficiency and food security in Indonesia.

REFERENCES

Adeyonu, Abigail Gbemisola, Olubunmi Lawrence Balogun, Babatunde Oluseyi Ajiboye, Isaac Busayo Oluwatayo, and Abiodun Olanrewaju Otunaiya. 2019. Sweet potato production efficiency in nigeria: application of data envelopment analysis. *AIMS Agriculture and Food*, vol. 4, no. 3, p.672–684. <https://doi.org/10.3934/agrfood.2019.3.672>

Adriani, Dessy and Elisa Wildayana. 2015. Integrasi pertumbuhan ekonomi dan penciptaan kesempatan kerja sektor pertanian di indonesia (Economic growth integration and employment opportunities creation in agricultural sector of indonesia creation). *Sosiohumaniora*, vol. 17, no.3, p. 203-211. (In Indonesian). <https://doi.org/10.24198/sosiohumaniora.v17i3.8381>

Al-Mashadani, A. K. and Z. H. Mahmood. 2019. Estimating

profit, cost function and technical efficiencies of rice production in nejaf for season 2016*. *Iraqi Journal of Agricultural Sciences*, vol.50, no.5, p.1237–1246.

Ali, Agha Iqbal and Lawrence M. Seiford. 1993. Computational accuracy and infinitesimals in data envelopment analysis. *INFOR: Information Systems and Operational Research*, vol. 31, no.4, p.290–297. <https://doi.org/10.1080/03155986.1993.11732232>

Armanto, M. Edi. 2014. Spatial mapping for managing oxidized pyrite (FeS₂) in south sumatra wetlands, indonesia. *Journal of Wetlands Environmental Management*, vol. 2, no.2, p.60–66. <http://dx.doi.org/10.20527/jwem.v2i2.27>

Armanto, M. Edi, Adzemi Bin Mat Arshad, Elisa Wildayana, and Momon S. Imanudin. 2013. Land evaluation for paddy cultivation in the reclaimed tidal lowland in delta saleh south sumatra indonesia. *Journal of Sustainability Science and Management*, vol.8, no.1, p.:32–42.

Arnade, C. A. 1994. "Using Data Envelopment Analysis to Measure International Agricultural Efficiency and Productivity." *Agriculture and Trade Analysis Division, Economic Research Service, U.S. Department of Agriculture. Technical* (Technical Bulletin No. 1831.). p. 1–30.

Avkiran, Necmi Kemal. 2015. An illustration of dynamic network dea in commercial banking including robustness tests. *Omega (United Kingdom)* vol.55, p. 141–50. <https://doi.org/10.1016/j.omega.2014.07.002>

Banker, Rajiv, Ram Natarajan, and Daqun Zhang. 2019. Two-stage estimation of the impact of contextual variables in stochastic frontier production function models using data envelopment analysis: second stage ols versus bootstrap approaches. *European Journal of Operational Research*, vol. 278, no. 2, p. 368–384. <https://doi.org/10.1016/j.ejor.2018.10.050>

Central Bureau of Statistics of Banyuasin Regency. 2018. *Kabupaten banyuasin dalam angka (Banyuasin in figures)*. Pangkalan Balai, Indonesia: BPS Kabupaten Banyuasin. 330 p. (In Indonesian). ISSN: 2356-4172

Central Bureau of Statistics of Indonesia. 2017. *Kajian konsumsi bahan pokok tahun 2017 (Study of staple food consumption in 2017)* Jakarta, Indonesia: BPS RI. 84 p. (In Indonesian). ISBN 978-602-438-277-3

Central Bureau of Statistics of Indonesia. 2019. *Statistik indonesia 2019 (Statistical yearbook of indonesia 2019)*. Jakarta, Indonesia: BPS RI. 738 p. (In Indonesian). ISSN 0126-2912

Charnes, A., W. W. Cooper, and E. Rhodes. 1978. Measuring the efficiency of decision making units. *European Journal of Operational Research*, vol. 2, no.6, p.429–444.

[https://doi.org/10.1016/0377-2217\(78\)90138-8](https://doi.org/10.1016/0377-2217(78)90138-8)

Charnes, A., W. W. Cooper, and E. Rhodes. 1979. Short Communication: Measuring the Efficiency of Decision-Making Units. *European Journal of Operational Research*, vol.3, no.6, p.339.

Coelli, Timothy J., D. S. Prasada Rao, Christopher J. O'Donnell, and George E. Battese. 2005. *An introduction to efficiency analysis*. New York: Springer US. p.349. ISBN 978-0-387-24265-1. <https://doi.org/10.1007/b136381>

Cullinane, Kevin, Dong Wook Song, and Tengfei Wang. 2005. The application of mathematical programming approaches to estimating container port production efficiency. *Journal of Productivity Analysis*. vol.24, no.1, p.73–92. <https://doi.org/10.1007/s1123-005-3041-9>

Duangbootsee, Uchook and Robert J. Myers. 2014. Technical efficiency of thai jasmine rice farmers: comparing price support program participants and non-participants. In *The Agricultural & Applied Economics Association's 2014 AAEA Annual Meeting*. Minneapolis, USA: Publisher : Agricultural & Applied Economics Association. p.1-26. <https://doi.org/10.22004/ag.econ.170713>

Erwidodo. 1990. Panel data analysis on farm-level efficiency, input demand and output supply of rice farming in west java, indonesia (unpublished PhD dissertation). Michigan State University. USA.

Färe, Rolf, Shawna Grosskopf, and C. A. Knox Lovell. 1985. *The Measurement of Efficiency of Production*. Berlin , Germany : Springer Science+Business Media, 216 p. ISBN 978-94-015-7721-2. <https://doi.org/10.1007/978-94-015-7721-2>

Färe, Rolf, Shawna Grosskopf, Giannis Karagiannis, and Dimitris Margaritis. 2017. Data envelopment analysis and its related linear programming models. *Annals of Operations Research*. vol.250, no.1, p.37–43. <https://doi.org/10.1007/s10479-015-2042-y>

Fatimah, Siti and Umi Mahmudah. 2017. Two-stage data envelopment analysis (DEA) for measuring the efficiency of elementary schools in indonesia. *International Journal of Environmental and Science Education*. vol. 12, no.8, p.1971–1987. <http://ijese.net/makale/1955>

Gholami, Roya, Dolores Añón Higón, and Ali Emrouznejad. 2015. Hospital performance: efficiency or quality? can we have both with IT?. *Expert Systems with Applications*. vol. 4, no.12, p.5390–5400. <https://doi.org/10.1016/j.eswa.2014.12.019>

Hoang, Viet Ngu and Mohammad Alauddin. 2012. Input-orientated data envelopment analysis framework for measuring and decomposing economic, environmental and ecological efficiency: an application to OECD agriculture. *Environmental and Resource Economics*. vol. 51, no. 3, p.431–452. <https://doi.org/10.1007/s10640-011-9506-6>

Hoang, Viet Ngu and Trung Thanh Nguyen. 2013. Analysis of environmental efficiency variations: a nutrient balance approach. *Ecological Economics*. vol.86, p.37–46. <https://doi.org/10.1016/j.ecolecon.2012.10.014>

Hu, Xiancun and Chunlu Liu. 2016. Profitability performance assessment in the australian construction industry: a global relational two-stage DEA method. *Construction Management and Economics*. vol.34, no.3, p.147–159. <https://doi.org/10.1080/01446193.2016.1180415>

Imanudin, Momon S. and Edi Armanto. 2012. "Effect of Water Management Improvement on Soil Nutrient Content, Iron and Aluminum Solubility at Tidal Low Land Area." In *2nd International Conference on Asia Agriculture and Animal (ICAAA 2012) APCBEE Procedia*. Singapore, Singapore. Publisher: Elsevier Procedia. p.253–258. ISBN 9781627483803. <https://doi.org/10.1016/j.apcbee.2012.11.043>

Iraízoz, Belén, Manuel Rapún, and Idoia Zabaleta. 2003. Assessing the technical efficiency of horticultural production in navarra, spain. *Agricultural Systems*. vol.78, no.3, p.387–403. [https://doi.org/10.1016/S0308-521X\(03\)00039-8](https://doi.org/10.1016/S0308-521X(03)00039-8)

Irwandi, Dedy. 2015. Strategi peningkatan pemanfaatan lahan rawa pasang surut dalam mendukung peningkatan produksi beras di kalamantan tengah. (Utilization increasing strategy of swap tidal lowlands to support rice production improvement in central kalimantan. *Agriekonomika*. vol. 4, no. 1, p. 97–106. <https://doi.org/10.21107/agriekonomika.v4i1.677>

Jalilov, Shokhrukh-mirzo, Mohammed Mainuddin, Md. Maniruzzaman, Md. Mahbulul Alam, Md. Towfiqul Islam, and Md. Jahangir Kabir. 2019. Efficiency in the rice farming : evidence from northwest bangladesh. *Agriculture (Switzerland)* vol. 9, no. 11, p. 245-259. <https://doi.org/10.3390/agriculture9110245>

Jansen, Hans G. P., Angel Rodriguez, Amy Damon, John Pender, Jacqueline Chenier, and Rob Schipper. 2006. Determinants of income-earning strategies and adoption of conservation practices in hillside communities in rural honduras. *Agricultural Systems*. vol. 88, no. 1, p. 92–110. <https://doi.org/10.1016/j.agsy.2005.06.005>

Khushalani, Jaya and Yasar A. Ozcan. 2017. Are hospitals producing quality care efficiently? an analysis using dynamic network data envelopment analysis (DEA). *Socio-Economic Planning Sciences*. vol. 60, p. 15–23. <https://doi.org/10.1016/j.seps.2017.01.009>

Kočiřová, Kristína. 2015. Application of the DEA on the measurement of efficiency in the EU countries. *Agricultural Economics (Czech Republic)*. vol. 61, no. 2, p. 51–62. <https://doi.org/10.17221/107/2014-AGRICECON>

Kotey, B. and C. J. O'Donnell. 2002. Data envelopment analysis in small and medium enterprises: a study of the australian food, beverages and tobacco manufacturing industry. *Small Enterprise Research*. vol. 10, no. 2, p.3–22. <https://doi.org/10.5172/ser.10.2.3>

Koutsoyiannis, Anna. 2001. *Theory of Econometric : An Introductory Exposition of Econometric Methods*. 2nd ed. London United Kingdom: Palgrave MacMillan. 601 p. ISBN 13: 9780333778227

Majumder, S., B. K. Bala, Fatimah Mohamed Arshad, M. A. Haque, and M. A. Hossain. 2016. Food security through increasing technical efficiency and reducing postharvest losses of rice production systems in bangladesh. *Food Security*. vol. 8, no. 2, p.361–374. <https://doi.org/10.1007/s12571-016-0558-x>

Nguyen, Hong Oanh, Hong Van Nguyen, Young Tae Chang, Anthony T. H. Chin, and Jose Tongzon. 2016. Measuring port efficiency using bootstrapped DEA: the case of vietnamese ports. *Maritime Policy and Management* 43(5):644–59. <https://doi.org/10.1080/03088839.2015.1107922>

O'Donnell, Christopher J. 2018. *Productivity and Efficiency Analysis : An Economic Approach to Measuring and Explaining Managerial Performance*. Singapore, Singapore : Springer Nature Singapore Pte Ltd., 434 p. ISBN 978-981-13-2984-5. <https://doi.org/10.1007/978-981-13-2984-5>

Oemar, Andoh. 2003. Optimalisasi pemanfaatan lahan pasang surut untuk pengembangan agribisnis tanaman pangan dan hortikultura di kalimantan tengah (Optimization of tidal lowlands utilization to horticulture and food agribusiness in central kalimantan). In *Seminar Hasil-Hasil Penelitian dan Pengkajian Teknologi Pertanian*. Palangkaraya, Indonesia: Balai Pengkajian Teknologi Pertanian Kalimantan Tengah, p. 1-7. (In Indonesian)

Rajasekar, T. and Malabika Deo. 2014. Is there any

- efficiency difference between input and output oriented DEA models: an approach to major ports in india. *Journal of Business & Economic Policy*. vol.1, no. 2, p. 18–28.
- Rios, Ana and Gerald Shively. 2005. Farm size and nonparametric efficiency measurements for coffee farms in vietnam. In *The American Agricultural Economics Association Annual Meeting*. Providence Rhode Island : USA. 22 p. <https://doi.org/10.22004/ag.econ.19159>
- Roy, Ranjan, Ngai Weng Chan, and Ruslan Rainis. 2014. Rice farming sustainability assessment in bangladesh. *Sustainability Science*. vol. 9, no. 1, p. 31–44. <https://doi.org/10.1007/s11625-013-0234-4>
- Roy, Ranjan, Ngai Weng Chan, and Stefanos Xenarios. 2016. Sustainability of rice production systems: an empirical evaluation to improve policy. *Environment, Development and Sustainability*. vol. 18, no. 1, p. 257–278. <https://doi.org/10.1007/s10668-015-9638-x>
- Scholz, U. 1980. Land reserves in southern sumatra/indonesia and their potentialities for agricultural utilization. *GeoJournal*. vol. 4, no. 1, p. 19–30. <https://doi.org/10.1007/BF00586752>
- Simar, Le'opold Simara and Wilson, Paul W. 2007. Estimation and inference in two-stage, semi-parametric models of production processes. *Journal of Econometrics*. vol. 136, no. 1, p. 31–64. <https://doi.org/10.1016/j.jeconom.2005.07.009>
- Squires, Dale and Steven Tabor. 1991. Technical efficiency and future production gains in indonesian agriculture. *The Developing Economies*. vol. 29, no. 3, p. 258–270. <https://doi.org/10.1111/j.1746-1049.1991.tb00211.x>
- Susanto, Robiyanto Hendro. 2003. Masalah kebakaran dan solusi berkaitan dengan pengembangan pertanian di areal rawa / gambut (Fire problem and solution regarding to agriculture development in swampland/peatland). In Suyanto, Chokkalingam Unna and Wibowo Prianto. *Kebakaran di lahan rawa/gambut di sumatera : masalah dan solusi (Fire on swampland/peatland in sumatera : problem and solution)*. Jakarta, Indonesia : Center for International Forestry Research. p. 147–176. ISBN 979-3361-49-2 (In Indonesian)
- Thanh Nguyen, Trung, Viet Ngu Hoang, and Bumsuk Seo. 2012. Cost and environmental efficiency of rice farms in south korea. *Agricultural Economics (United Kingdom)*. vol. 43, no. 4, p. 369–378. <https://doi.org/10.1111/j.1574-0862.2012.00589.x>
- Trewin, R., L. Weiguo, Erwidodo, and S. Bahri. 1995. Analysis of the technical efficiency over time of west javanese rice farms. *Australian Journal of Agricultural Economics*. vol. 39, no. 2, p. 143–63. <https://doi.org/10.1111/j.1467-8489.1995.tb00548.x>
- Wang, Na, Ying Gao, Xiangfei Li, and Yonghong Wang. 2018. Efficiency analysis of grain production inputs: utilization in china from an agricultural sustainability perspective. *Agricultural Research*. vol. 7, no. 1, p. 37–50. <https://doi.org/10.1007/s40003-018-0293-y>
- Wang, Yubao, Lijie Shi, Haojie Zhang, and Shikun Sun. 2017. A data envelopment analysis of agricultural technical efficiency of northwest arid areas in china. *Frontiers of Agricultural Science and Engineering*. vol. 4, no.2, p.195–207. <https://doi.org/10.15302/J-FASE-2017153>
- Wanke, Peter and Carlos Barros. 2014. Two-stage DEA: an application to major brazilian banks. *Expert Systems with Applications*. vol. 41, no. 5, p. 2337–2344. <https://doi.org/10.1016/j.eswa.2013.09.031>
- Wildayana, Elisa, Dessy Adriani, and M. Edi Armanto. 2017. Livelihoods , Household Income and Indigenous Technology in South Sumatra Wetlands. *Sriwijaya Journal of Environment*. vol. 2, no. 1, p. 25–30. <https://dx.doi.org/10.22135/sje.2017.2.1.25-30>
- Wildayana, Elisa and M. Edi Armanto. 2018. Dynamics of landuse changes and general perception of farmers on south sumatra wetlands. *Bulgarian Journal of Agricultural Science* vol. 24, no. 2, p. 180–188.
- Wildayana, Elisa and M. Edi Armanto. 2019. The role of subsidized fertilizers on rice production and income of farmers in various land typologies. *Jurnal Ekonomi Pembangunan: Kajian Masalah Ekonomi Dan Pembangunan*. vol. 20, no. 1, p. 100–107. <https://doi.org/10.23917/jep.v20i1.7081>
- Wildayana, Elisa, M. Edi Armanto, and Heri Junedi. 2017. Characterizing and analyzing sonor system in peatlands. *Journal of Wetlands Environmental Management*. vol. 5, no. 2, p. 6–13. <http://dx.doi.org/10.20527/jwem.v5i2.109>
- Yazid, Muhammad, Mad Nasir Shamsudin, Khalid Abdul Rahim, Alias Radam, and Azizi Muda. 2015. Water service valuation in tidal lowland agriculture. *Pertanika Journal of Social Science and Humanities*. vol. 23, June):39–46.

Acknowledgment

The authors would like to express great thank to the Directorate General of Science and Technology Resources and the Directorate of Research and Community Service in the Ministry of Research, Technology and Higher Education of Indonesia for funding this research through research grants of PMDSU Batch III scholarship by letter number: 151/SP2H/LT/DRPM/IV/2018.

Contact address:

Khairul Fahmi Purba, PhD Candidate of PMDSU Scholarship Batch III Program, The Graduate School of Universitas Sriwijaya, Faculty of Agriculture, Department of Agribusiness, Jalan Padang Selasa, 524, 30139, Palembang, Indonesia, Tel. +6283196328464

E-mail: khairulfahmi@student.pps.unsri.ac.id

ORCID: <https://orcid.org/0000-0003-2982-5041>

*Muhammad Yazid, Universitas Sriwijaya, Faculty of Agriculture, Department of Agribusiness, Jalan Palembang-Prabumulih KM 32, Indralaya, Indonesia, Tel. +628153800550

E-mail: yazid_ppmal@yahoo.com

ORCID: <https://orcid.org/0000-0003-0374-9132>

Mery Hasmeda, Universitas Sriwijaya, Faculty of Agriculture, Department of Agronomy, Jalan Palembang-Prabumulih KM 32, Indralaya, Indonesia, Tel. +628127126579

E-mail: m_hasmeda@yahoo.com

ORCID: <https://orcid.org/0000-0001-7462-6282>

Dessy Adriani, Universitas Sriwijaya, Faculty of Agriculture, Department of Agribusiness, Jalan Palembang-Prabumulih KM 32, Indralaya, Indonesia, Tel. +628153800550

E-mail : dessyadriani@fp.unsri.ac.id

ORCID: <https://orcid.org/0000-0002-0772-5253>

Meitry Firdha Tafari, PhD Candidate of PMDSU Scholarship Batch III Program, The Graduate School of Universitas Sriwijaya, Faculty of Agriculture, Department of Agribusiness, Jalan Padang Selasa, 524, 30139, Palembang, Indonesia, Tel. +6281369699331

E-mail: meitrytafarini@student.pps.unsri.ac.id

ORCID: <https://orcid.org/0000-0002-9857-1367>

Coressponding author : *

Technical Efficiency Manuscript Submission
(28 Januari 2020)

[Potravinarstvo] Submission Acknowledgement

Dari: Ing. Peter Zajác, PhD. (editor@potravinarstvo.com)

Kepada: yazid_ppmal@yahoo.com; m_hasmeda@yahoo.com; dessyadriani@fp.unsri.ac.id;
meitrytafarini@student.pps.unsri.ac.id

Tanggal: Selasa, 28 Januari 2020 pukul 09.09 GMT+7

Hello,

Khairul Fahmi Purba has submitted the manuscript, "TECHNICAL EFFICIENCY AND FACTORS AFFECTING RICE PRODUCTION IN TIDAL LOWLANDS OF SOUTH SUMATRA PROVINCE INDONESIA" to Potravinarstvo Slovak Journal of Food Sciences.

If you have any questions, please contact me. Thank you for considering this journal as a venue for your work.

Ing. Peter Zajác, PhD.

Technical Efficiency Manuscript Submission

ORCHID

(28 Februari 2020)

[Potravinarstvo] Submission ORCID

Dari: Ing. Peter Zajác, PhD. (editor@potravinarstvo.com)

Kepada: yazid_ppmal@yahoo.com

Tanggal: Jumat, 28 Februari 2020 pukul 17.20 GMT+7

Dear Muhammad Yazid,

You have been listed as an author on a manuscript submission to Potravinarstvo Slovak Journal of Food Sciences. To confirm your authorship, please add your ORCID id to this submission by visiting the link provided below.

 [Register or connect your ORCID iD](#)

[More information about ORCID at Potravinarstvo Slovak Journal of Food Sciences](#)

If you have any questions, please contact me.

Ing. Peter Zajác, PhD.

Technical Efficiency Manuscript Revision
(14 Desember 2020)

[Potravinarstvo] Editor Decision

Dari: Editor 28 (editor28@potravinarstvo.com)

Kepada: khairulfahmi@student.pps.unsri.ac.id; yazid_ppmal@yahoo.com; m_hasmeda@yahoo.com;
dessyadriani@fp.unsri.ac.id; meitrytafarini@student.pps.unsri.ac.id

Tanggal: Senin, 24 Februari 2020 pukul 18.45 GMT+7

Khairul Fahmi Purba, Muhammad Yazid, Mery Hasmeda, Dessy Adriani, Meitry Firdha Tafari:

The editing of your submission, "TECHNICAL EFFICIENCY AND FACTORS AFFECTING RICE PRODUCTION IN TIDAL LOWLANDS OF SOUTH SUMATRA PROVINCE INDONESIA," is complete. We are now sending it to production.

Submission URL: <https://potravinarstvo.com/journal1/index.php/potravinarstvo/authorDashboard/submission/1287>

Editor 28
editor@potravinarstvo.com

Technical Efficiency Manuscript Publication
(17 Januari 2021)

[Potravinarstvo] Editor Decision

Dari: Editor 28 (editor28@potravinarstvo.com)

Kepada: khairulfahmi@student.pps.unsri.ac.id; yazid_ppmal@yahoo.com; m_hasmeda@yahoo.com;
dessyadriani@fp.unsri.ac.id; meitrytafarini@student.pps.unsri.ac.id

Tanggal: Rabu, 19 Februari 2020 pukul 14.10 GMT+7

Khairul Fahmi Purba, Muhammad Yazid, Mery Hasmeda, Dessy Adriani, Meitry Firdha Tafari:

We have reached a decision regarding your submission to Potravinarstvo Slovak Journal of Food Sciences, "TECHNICAL EFFICIENCY AND FACTORS AFFECTING RICE PRODUCTION IN TIDAL LOWLANDS OF SOUTH SUMATRA PROVINCE INDONESIA".

Our decision is to: The manuscript will be acceptable after revision

Editor 28
editor@potravinarstvo.com

**Manuscript Acceptance dan
Published Online**

(16 November 2021 dan 28 Januari 2021)



TECHNICAL EFFICIENCY AND FACTORS AFFECTING RICE PRODUCTION IN TIDAL LOWLANDS OF SOUTH SUMATRA PROVINCE INDONESIA

Khairul Fahmi Purba, Muhammad Yazid, Mery Hasmeda, Dessy Adriani, Meitry Firdha Tafari

ABSTRACT

Rice has been the staple food for most Indonesians, so the rice consumption in Indonesia is considerably high. Rice is cultivated in many agroecosystems, including tidal lowlands. Some tidal lowlands are considered suitable for rice cultivation. Therefore, tidal lowlands may support food security in Indonesia. However, productivity remains a problem in which inputs are not used efficiently. This study aims to determine the technical efficiency and identify factors affecting rice production in tidal lowlands of South Sumatra, one of main rice barns in Indonesia. A survey was conducted by interviewing 93 farmers in Telang Rejo Village. A data envelopment analysis (DEA) with output-oriented and variable returns to scale (VRS) approach was applied to measure technical efficiency score from each farm observed. An ordinary least square (OLS) regression with a Cobb-Douglass production function approach was employed to analyse the factors affecting rice production in tidal lowlands of South Sumatra, Indonesia. The results showed that majority of rice farms in the tidal lowlands of South Sumatra Indonesia were inefficient. There were 44 rice farms (47.31%) that were efficient, 5 rice farms (5.38%) that were inefficient under increasing returns to scale and 44 rice farms (47.31%) that were inefficient under decreasing returns to scale. The inputs, such as nitrogen, phosphorus, and potassium fertilisers, herbicides, insecticides and fungicides had positive significant influences on rice production in the tidal lowlands of South Sumatra, Indonesia.

Keywords: technical efficiency; rice production; tidal lowlands; data envelopment analysis; ordinary least square

INTRODUCTION

Rice is a staple food and livelihood platform for Asian countries, such as Vietnam, Indonesia, Pakistan and others (Roy, Chan and Rainis, 2014; Roy, Chan and Xenarios, 2016; Al-Mashadani and Mahmood, 2019) Rice is still an income source for rural society in Indonesia. Therefore, it has a strategic position. Moreover, Rice also contributes to 9.5% of the Gross Domestic Product of Indonesia (Adriani and Wildayana, 2015; Central Bureau of Statistics of Indonesia, 2019). According to Government regulation #12 of 2012 concerning food, the Indonesian government is obligated to guarantee availability, affordability, and fulfilment of food consumption for all Indonesians. However, the consumption rate of rice is very high in Indonesia. The rice consumption of Indonesia achieved approximately 29.13 million tons or 111.58 kg per capita per year (Central Bureau of Statistics of Indonesia, 2017). A population rate increase caused rice consumption to also increase. At the same time, a high land conversion causes unstable rice production for fulfilling rice consumption in Indonesia. This means that the government must take an appropriate decision or policy for solving those problems.

One of the solutions taken by government is the development of agriculture in the suboptimal lands of Indonesia. One of the suboptimal lands in Indonesia is tidal lowland. Tidal lowland is reclaimed swamp land and occurs between the land and the sea. Therefore, tidal lowland depends on the changing tides. Tidal lowland has potential to support food security in Indonesia. One of the available tidal lowlands of Indonesia is in South Sumatra Province. Based on data, the total of tidal lowland area is 266,674 hectares in South Sumatra. A large number of tidal lowlands in South Sumatra are in Banyuasin Regency. Based on the report of statistics, the total of tidal lowlands in Banyuasin is 161,917 hectares (Central Bureau of Statistics of Banyuasin Regency, 2018). Due to the available total area of tidal lowland is being large, it is expected become a food barn or food growing area or rice production centre of Indonesia. On the other hand, tidal lowland is still not reclaimed in large amounts because of peat in tidal lowlands. Therefore, Many tidal lowlands may not be utilised (Susanto, 2003).

One of locations for tidal lowlands is in Telang Rejo Village, Delta Telang I, South Sumatra Province of Indonesia. This location is a reclamation project in the

1970s involving the transmigration program from Java Island to Sumatra Island (Scholz, 1980; Wildayana, Adriani and Armanto, 2017; Wildayana and Armanto, 2018). Telang Rejo Village has type A tidal lowlands. The type A is a tidal lowlands suitable for rice cultivation (Imanudin and Armanto, 2012), it forms by tidal lowlands that are overflowed both large and small tides at all times (Irwandi, 2015).

Besides the good potential of tidal lowlands, the constraints and threats exist, such as the rice productivity of tidal lowlands still being low. The rice productivity of tidal lowlands is approximately 4.10 to 4.43 tons per hectare. Whereas, the average rice productivity is 8 tons per hectare (Wildayana and Armanto, 2019). This difference between actual and expected production was caused by inefficient use of input (Majumder et al., 2016). The other problems of rice cultivation in tidal lowlands are soil acidity, nutrient deficiency, salinity and pyrite (Fe₂S) content (Armanto, et al., 2013; Armanto, 2014; Wildayana and Armanto, 2018). Furthermore, the water is unsuitable for the crop needs for rice cultivation in tidal lowlands agriculture (Yazid et al., 2015). There is no technological recommendation based location, such as fertiliser, variety of rice, land clearing and management, and also water management (Oemar, 2003). These factors are causes of inefficient use of agricultural inputs to rice production in tidal lowland agriculture.

Studies regarding the technical efficiency of rice production become important for estimating the efficiency level of rice production in tidal lowlands agriculture. Technical efficiency refers to achieving a total of potential output through a combination of total of available input (Iráizoz, Rapún, and Zabaleta, 2003). If a business or enterprise can improve output by input use optimization, the business is efficient (Coelli et al., 2005). Some studies regarding the technical efficiency of rice production in Indonesia have been conducted (Erwidodo, 1990; Squires and Tabor, 1991; Trewin et al., 1995). Even through there have been many studies regarding the efficiency of rice production in Indonesia, there are only a little of them discussing the efficiency of rice production in tidal lowlands of South Sumatra in particular. These previous studies investigated phenomena on Java Island with technical irrigated land agroecosystem. On the other hand, this study investigates the case of Sumatra Island with its suboptimal land agroecosystem, which is tidal lowlands. Therefore, this study is very important to be conducted.

Scientific hypotheses

There were two hypotheses in this study:

1. 70% of rice farms in tidal lowlands of South Sumatra Indonesia are efficient in constant returns to scale condition
2. Land area, seed, fertilizer of N, P, and K fertilisers herbicides, insecticides, fungicides and labour significantly affect rice production in tidal lowlands of South Sumatra Indonesia

MATERIAL AND METHODOLOGY

Location

This study was conducted in Telang Rejo Village, Banyuasin Regency, South Sumatra Province of Indonesia. There are some considerations in choosing the location.

1. This location has tidal lowlands of type A, and this location is suitable for rice cultivation.
2. This location is well known as food barn and production centre of tidal lowland rice for Banyuasin Regency.
3. This location is the largest village in tidal lowland agriculture of South Sumatera.
4. Telang Rejo is one of the transmigration project villages in the 1970s. The tidal lowlands in Telang Rejo was reclaimed by government to transmigrants from Java Island to Sumatra Island.
5. The Water management system was built by the agency of public work through grants from the government. The map of study site is in Figure 1.

Data Collection

Data was obtained by interviewing 93 farmers in Telang Rejo. Therefore, there were 93 decision making units (DMUs). They were selected randomly. This study used a questionnaire as a tool of research. This study was assisted by five master degree students as enumerators. The variables used in this study consisted one dependent variable (Y) and nine independent variables (X). The dependent variable was the rice production of tidal lowlands (Coelli et al., 2005). The independent variables were land area (Thanh Nguyen, Hoang and Seo, 2012), seeds (Duangbootsee and Myers, 2014), chemical fertilisers which are N, P and K (Hoang and Alauddin, 2012; Hoang and Nguyen, 2013; Jansen et al., 2006), pesticides and labour (Rios and Shively, 2005; (Duangbootsee and Myers, 2014).

Technical Efficiency

Efficiency is the ratio between output and input. If the ratio is high, the efficiency score will be high. The efficiency score is between 0 to 1. It can be defined mathematically $0 \leq TE \leq 1$. Efficiency score can be obtained by (Arnade, 1994):

$$Efficiency = \frac{\sum_k u_k y_{k,j}}{\sum_i v_i x_{i,j}}$$

Where :

y = output

x = input

u, v = average weight

i, j, k = 1, 2, 3, ... n

Data Envelopment Analysis (DEA)

Data envelopment analysis (DEA) is a method to estimate efficiency with linear programming nonparametric approach (Charnes, Cooper and Rhodes 1978; Charnes, Cooper and Rhodes, 1979) DEA identifies the best frontier solution involving all observation of decision making units (DMUs). Therefore, it is called an envelope model. The DEA model also can be applied to estimate efficiency or performance in some sectors such as hospital (Gholami, Higón and Emrouznejad, 2015; Khushalani and Ozcan, 2017),

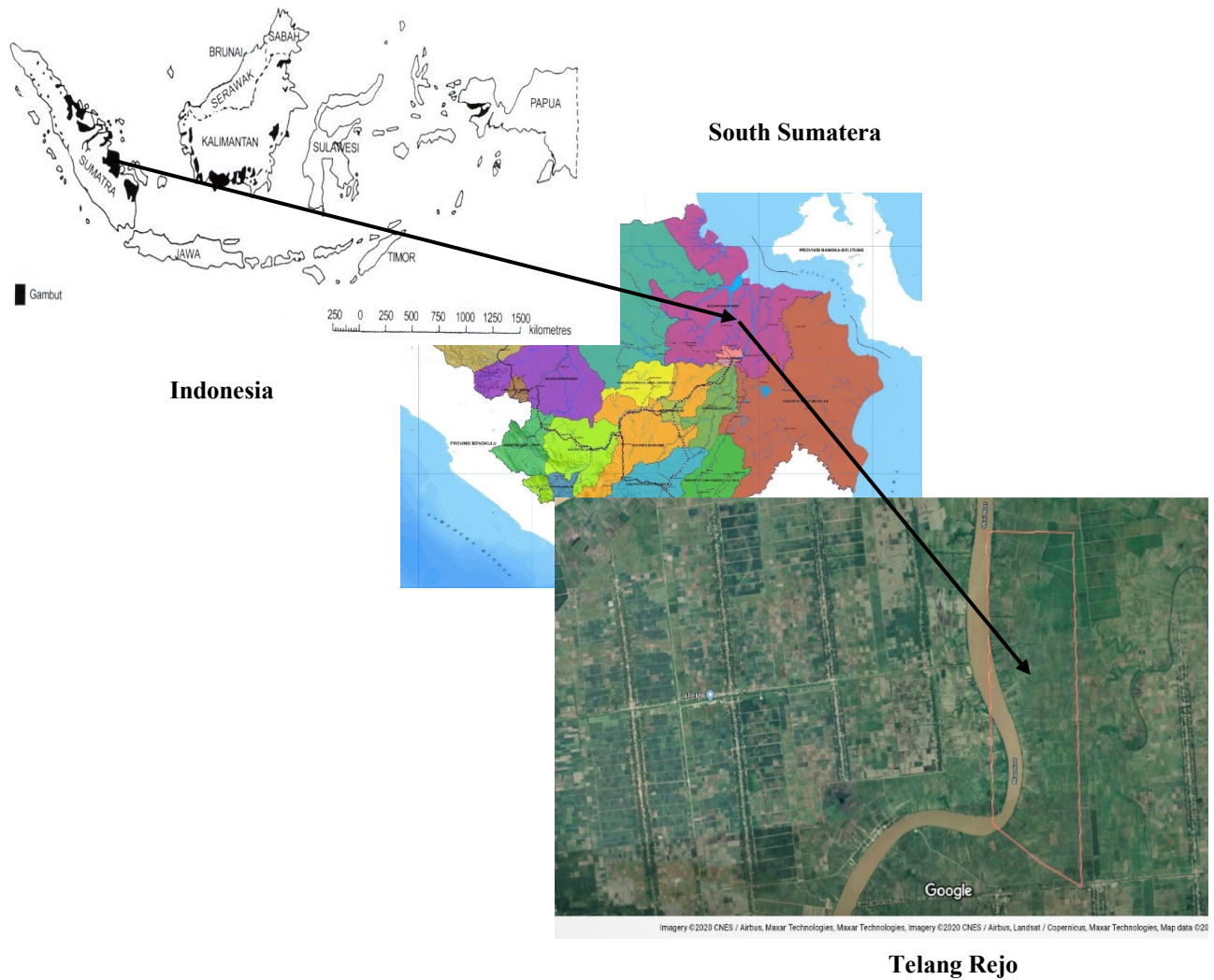


Figure 1 Location of study.

school (Fatimah and Mahmudah, 2017), construction (Hu and Liu, 2016), banking (Wanke and Barros, 2014; Avkiran, 2015), port operation (Rajasekar and Deo, 2014; Nguyen et al., 2016), industry and manufacture (Kotey and O'Donnell, 2002), agriculture (Haji, 2007; Guzman et al., 2009; Mardani and Salarpour, 2015) and among others.

DEA has also been applied widely to estimate farm and agricultural performance worldwide (Kočišová, 2015; Wang et al., 2017; Wang et al., 2018; Adeyonu et al., 2019). DEA has been used as a tool for decision making in a businesses, organisations, and governments as well. DEA has some advantages. It can be applied simultaneously by multiple inputs and outputs. Without the need to previously determine weights. Furthermore, DEA does not need a functional form and specific production function such as input-output relationship.

DEA is divided by 2 orientations. The first is oriented input. It minimises input to achieve a potential output level. The second one is oriented output. It maximises output bundle while keeping the input level constant. Both of them minimise input and maximise output for achieving efficiency, DEA model oriented input focuses on operational and managerial problems while DEA model oriented output is in regards to planning and strategy (Cullinane, Song and Wang, 2005).

The assumptions of the DEA model are constant return to scale (CRS) and variable returns to scale (VRS). These assumptions affect the envelope frontier. CRS is defined as a proportion of input addition equaling proportion of output addition. VRS is defined as production technology showing increasing, constant or decreasing returns to scale. The VRS assumption is appropriate for agriculture study because agricultural production may occur in 3 situations which are increasing, constant or decreasing returns to scale.

The DEA model in this study applied oriented output. The model can be defined as (Färe, Grosskopf and Lovell, 1985; Ali and Seiford, 1993; Färe et al., 2017; O'Donnell, 2018):

$$\text{Max } \theta_i \quad (1)$$

Subject to:

$$u_{jm} \leq \sum_{j=1}^j z_j u_{jm} \quad (2)$$

Where:

- θ = output efficiency of DMU's being estimated by DEA
- u_{jm} = amount of output m produced by DMU j
- z_j = intensity variable for DMU j
- j, m = 1, 2, 3...n

The model obtained is a CCR or CRS model. To transform the model to be VRS or BCC Model, this constraint below should be add in the model.

$$\sum_j \lambda_j = 1 \quad (3)$$

A DEA model with oriented output and VRS approach estimates technical efficiency though measuring potential output by 93 farmers or DMUs. The level of input (λ) is kept constant so that it obtains three stages of production, namely increasing, constant or decreasing returns to scale.

Ordinary Least Square (OLS)

The use of OLS has been widely applied by many scholars. OLS is a method to identify the factors affecting agricultural production. OLS is also used as a second phase analysis of the DEA. According to **Banker, Natarjan and Zhang (2019)** the application of the combination between DEA and OLS is better than the Simar-Wilson model in measuring productivity at the second stage. The application of OLS is also more consistent when combined with DEA in second stage (**Simar and Wilson, 2007**). The OLS equation used in this study is the Cobb-Dougllass production function equation. We can define it as :

$$Y = f(X_1, X_2, X_3 \dots X_n) \quad (4)$$

$$Y = \beta_0 X_1^{\beta_1} X_2^{\beta_2} X_3^{\beta_3} \dots X_n^{\beta_n} \quad (5)$$

The estimation of the above OLS equation was transformed by natural logarithm (Ln). It was created to obtain the equation or model easier to interpret (**Koutsoyiannis, 2001**).

$$\text{Ln}Y = \text{Ln}\beta_0 + \beta_1 \text{Ln}X_1 + \beta_2 \text{Ln}X_2 + \beta_3 \text{Ln}X_3 \dots \beta_n \text{Ln}X_n \quad (6)$$

Where:

Y	= Production
β_0	= Intercept
$\beta_1, \beta_2, \beta_3 \dots \beta_n$	= Parameter
$X_1, X_2, X_3 \dots X_n$	= Input
n	= 1,2,3,...n

Statistical analysis

The software used for data analysis in the study was the Data Envelopment Analysis Program (DEAP) software version 2.1. The software was developed by Tim Coelli from the Centre of Efficiency and Productivity Analysis (CEPA) in the University of Queensland, Australia. In addition, the Statistical Package for Social Science (SPSS) version 23 was also used for OLS analysis. The *p*-values used in OLS analysis were *p* < 0.01; 0.05 and 0.10

RESULTS AND DISCUSSION

Characteristics of farmers

Based on Table 1, farmers were in productive age group. The majority of farmers aged 40 – 49 years. The household size was 2 people for the majority. A small percentage of respondents were elderly and whose wife or husband has passed away lived alone. These respondents normally had children who were married and lived nearby. A low percentage of respondents had two or more children. These respondents normally are middle aged with children who are still young and unmarried. However, the education of farmers is still relatively low. The length of education only 4 to 7 years, which is equivalent to

primary school. The majority of farmers had 11 – 20 years of farming experience. This was because farmers in Telang Rejo Village are the second and third generation of transmigrants of the transmigration project from Java Island to Sumatra Island in the 1970s. The land status of farmers in Telang Rejo Village was mainly private ownership. This is because at the beginning of the transmigration program each household was given 2 hectares of reclaimed tidal lowlands by the government (**Arsyad, Saidi and Enrizal, 2014**).

Table 2 showed agricultural input uses and output produced in tidal lowlands of Telang Rejo Village. According to The Ministry of Agriculture of Indonesia (2007) the uses of N, P and K fertilisers are 200 kg.ha⁻¹, 75 kg.ha⁻¹ and 50 kg.ha⁻¹ respectively. In fact, the uses of N, P and K fertilisers in tidal lowlands were higher than the recommendation. This could be a threat for sustainability and environmental integrity in tidal lowlands with these surpluses.

Characteristic of Tidal Lowlands

Tidal lowlands contain pyrite and peat. Pyrite was formed when the tidal lowlands were flowed by sea water in dry season. It will be dangerous to rice when it was oxidized. Furthermore, peat was cause of soil acidity (**Shamshuddin et al., 2004; Nurita and Ar-Riza, 2014**).

The tidal lowlands' problem are pH, nutrient deficiency, high content of Fe and Al and uncontrolled water (**Purnomo et al., 2005**). Water management in tidal lowlands was different with irrigation system. The government had built some primary and secondary canals with the sliding gate and flap gate. In the rice farm, The intensive shallow canals were conducted which function to wash acidic and toxic substances from the field (**Widjaja-Adi, Ratmini and Swastika, 1997**). However, the maintenance of the canals need to consider because some gates were broken (**Ar-Riza and Alkasuma, 2008**).

Identification of efficient and inefficient rice farms in tidal lowland

A total of 93 farms were used for each efficiency score using the DEA method. The result of DEA showed that most of the tidal lowlands rice farms in Telang Rejo Village were inefficient. There were only 44 (47.31%) efficient rice farms that were in constant returns to scale condition, while there were 49 inefficient farms. Where 44 (47.31%) of those in decreasing returns to scale condition and 5 (5.38%) that were in increasing returns to scale condition. Figure 2 is presented to show the results of the DEA.

There were 44 rice farms that had decreasing returns to scale caused by the excesses of input use. Therefore, to achieve efficiency the input uses need to be reduced. The purpose of reducing input use on the farms for the law of diminishing returns has not occurred. Whereas the farms with increasing returns to scale (five rice farms) should increase the input uses to achieve efficiency because it is still possible for them to increase production. The finding of a study stated that rice farms in Vietnam operated with less than the optimal scale (**Linh, 2012**). The result supported this study.

Table 1 Descriptive statistics of farmers in Telang Rejo Village (n = 93).

Characteristics	Frequency	Percentage (%)
Age (year)		
20 – 29	12	12.90
30 – 39	23	24.73
40 – 49	36	38.71
50 – 59	18	19.35
60 – 69	4	4.30
Household size (individual)		
1	20	21.51
2	34	36.56
3	30	32.26
4	8	8.60
5	1	1.08
Education (year)		
0 – 3	3	3.23
4 – 7	52	55.91
8 – 11	17	18.28
12 – 15	20	21.51
≥16	1	1.08
Farming experience (year)		
0 – 10	18	19.35
11 – 20	38	40.86
21 – 30	18	19.35
31 – 40	18	19.35
41 – 50	1	1.08
Land Status		
Renter	4	4.30
Owner	80	86.02
Renter and Owner	9	9.68

Table 2 Descriptive statistics of input and output (n=93)

Variable	Mean	Std. Deviation	Min.	Max.
Production (kg.ha ⁻¹)	6,602.15	142.66	3,000.00	10,000.00
Land area cultivated (ha)	4.83	3.52	0.50	20.00
Seeds (kg.ha ⁻¹)	86.40	18.71	50.00	120.00
N fertiliser (kg.ha ⁻¹)	329.57	1.61	50.00	650.00
P fertiliser (kg.ha ⁻¹)	223.66	1.14	50.00	500.00
K fertiliser (kg.ha ⁻¹)	195.16	1.09	50.00	400.00
Herbicide (L.ha ⁻¹)	6.90	3.59	2.00	20.00
Insekticide (L.ha ⁻¹)	6.41	3.83	1.00	17.00
Fungicide (L.ha ⁻¹)	5.99	3.22	1.00	17.00
Labour (day.ha ⁻¹)	3.78	3.36	1.00	14.00

Farm performance can also be divided based on the efficiency score. **Jalilov et al. (2019)** divided 3 performance using efficiency scores based on: 1) the best performance which has an efficiency score between 0.90 to 1.00 or 90% to 100%. Farming in this category was called efficient farming 2) good performance, or farming that has an efficiency score of 0.80 to 0.89 or 80% to 89% also included in the efficient category, while for 3) poor

performance is farming that has efficiency score under 0.79 or 79%. Farming with this score is categorised as inefficient.

Based on this grouping, there were 68 (73.12%) farms that had efficiency scores from 90% to 100%. Then, there were 17 (18.28%) farms that had efficiency scores between 80% and 89%. Meanwhile, 8 (8.60%) farms had score of less than 79%. Figure 3 was given to show the categorisation

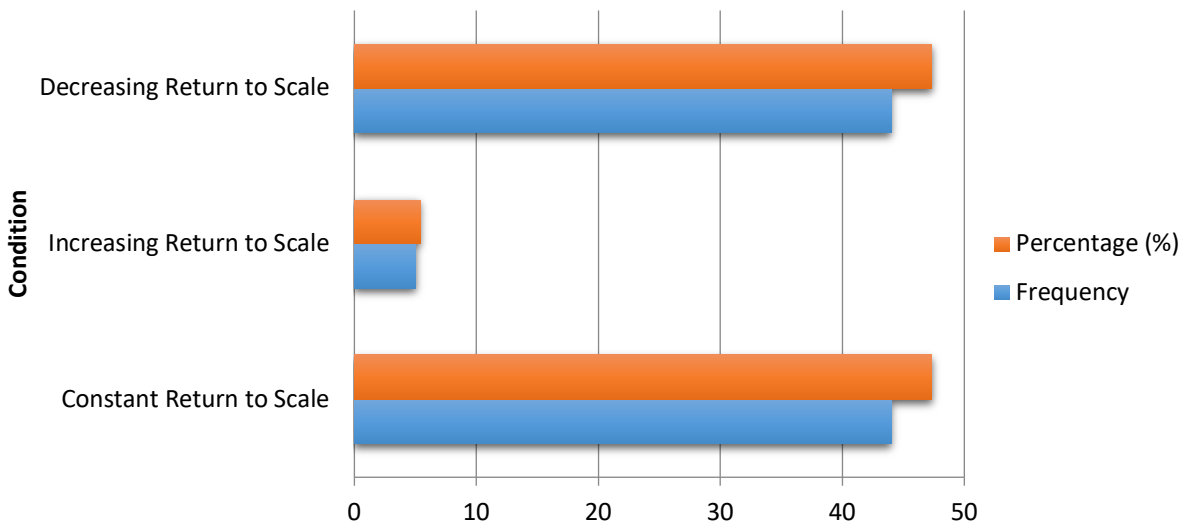


Figure 2 Distribution of farming based on returns to scale condition.

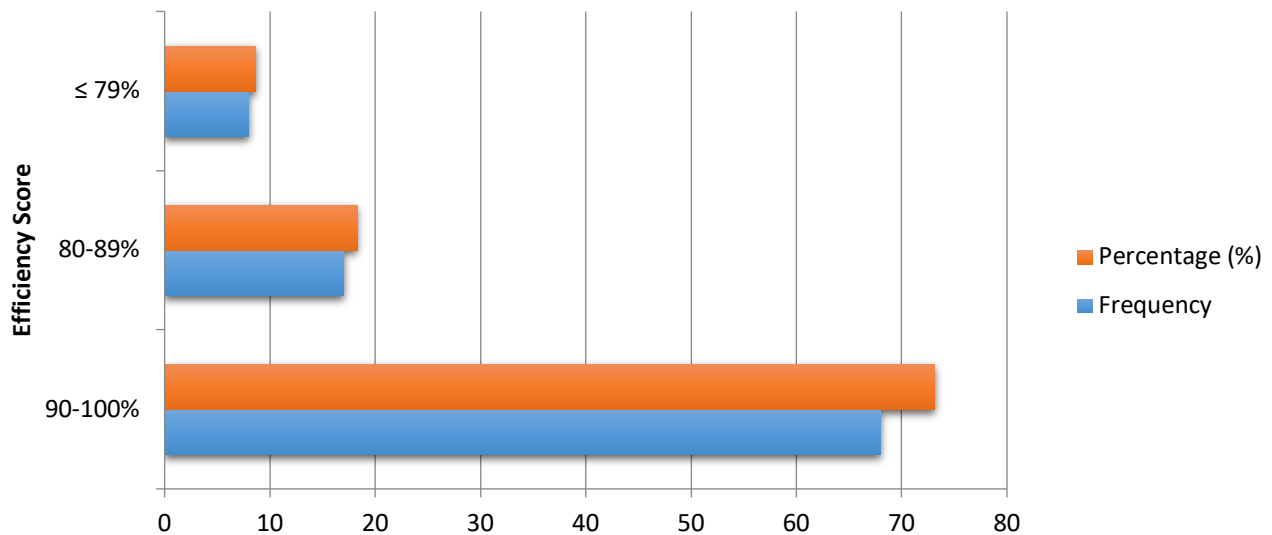


Figure 3 Categorisation of rice farming performance based on efficiency scores.

of rice farming performance based on efficiency scores. This finding is same like a study in Turkey. The average efficiency score of rice production in Marmara region was 92%. It means performance of rice farming in Turkey was the best performance (Tipi et al., 2009).

The poorly performing farms occurred due to the input use not being optimal. The achievement of actual total production was not in accordance with the expected total production. It was further determined that poorly performing farms were on decreasing returns to scale. The well performing farms with efficiency scores of 80% to 89% had worked on optimal input use. Furthermore, the best performing farms with efficiency scores of 90% to 100% had been on the efficiency frontier (Jalilov et al., 2019).

Factors affecting rice production in tidal lowlands

This study applied an OLS analysis as the second stage analysis of DEA. The classic assumption test (data normality, heteroscedasticity and multicollinearity) was

applied in OLS model. It was applied to obtain a free errors OLS model. In addition to obtain factors affecting rice production in tidal lowlands, OLS can also obtain an equation of the Cobb-Douglass production function for rice production in tidal lowland. The production functions obtained from OLS analysis were:

$$Y=127938130X1^{0.023}X2^{0.030}X3^{0.049}X4^{0.072}X5^{0.057}X6^{0.097}X7^{0.039}X8^{0.082}X9^{0.003} \tag{7}$$

Where:

- Y = Tidal lowland rice production (kg.ha⁻¹)
- X1 = Land area cultivated (ha)
- X2 = Seed (kg.ha⁻¹)
- X3 = N fertiliser (kg.ha⁻¹)
- X4 = P fertiliser (kg.ha⁻¹)
- X5 = K fertiliser (kg.ha⁻¹)
- X6 = Herbicide (L.ha⁻¹)
- X7 = Insecticide (L.ha⁻¹)
- X8 = Fungicide (L.ha⁻¹)
- X9 = Labour (day.ha⁻¹)

Table 3 The result of OLS analysis.

Variable	β	Std. Error	t-stat	p
Intercept	8.107	0.274	29.549	0.000
Land area cultivated (X1)	0.023	0.027	0.862	0.391
Seed (X2)	0.030	0.061	0.498	0.620
Fertilizer N (X3)	0.049	0.026	1.885***	0.063
Fertilizer P (X4)	0.072	0.029	2.463**	0.016
Fertilizer K (X5)	0.057	0.032	1.794***	0.076
Herbicide (X6)	0.097	0.031	3.159*	0.002
Insecticide (X7)	0.039	0.022	1.809***	0.074
Fungicide (X8)	0.082	0.032	2.549**	0.013
Labour (X9)	0.003	0.022	0.135	0.893

Note: F-stat = 30.682; R-Square = 0.769; Adjusted R-Square = 0.744; * Significant at $p < 0.01$; ** Significant at $p < 0.05$; *** Significant at $p < 0.10$.

Based on the OLS analysis (Table 3), it was found that herbicides had a positive significant influence on rice production in tidal lowlands ($p < 0.01$), and P fertiliser and fungicides had a positive significant influence on rice production in tidal lowlands ($p < 0.05$).

Furthermore, N Fertiliser, K Fertiliser and insecticides also had a significant influence on rice production in tidal lowlands ($p < 0.10$). The findings supported a study by **Piya, Kiminami and Yagi (2012)**. The result of study stated that chemical fertilizer, pesticide and fungicide were positive and statistically significant to rice production in Nepal. Furthermore, pesticide and herbicide also affected rice production in Sri Lanka (**Gedara et al., 2012**). Meanwhile, the land area cultivated, seeds and labour did not significantly influence rice production in tidal lowlands. A study stated that farm size did not affect rice production in Nigeria (**Ahmaedu and Alufohai, 2012**). Many the land used by farmers in Telang Rejo Village were fragmented. The impact of fragmented land was that farmers had difficulty in managing rice farms. This was caused by the scattered distribution of land. Therefore, the management of rice farms in tidal lowland became ineffective. This case began when many farmers took a credit or loan from a wealthier farmer or *toke*. The land became a guarantee in this loan system. It was an informal credit with high interest. The interest applied by the *toke* is approximately 30% – 40% per year in a term of one to five years. The informal credit is absolutely not profitable for farmers in tidal lowland area. The loan system had terms and conditions as agreement between farmer and the *toke*. The farmers were not allowed to cultivate rice in their lands until they were able to pay their loan during the repayment period. The farmers who were not able to pay the loan according to agreement had to give their land to the *toke*. This situation created rich farmers with large land areas and poor farmers with small land area, so there was significant inequality among the farmers in tidal lowlands.

Seed did not significantly affect rice production in tidal lowlands. The use of seeds was very high in the rice farms of tidal lowlands. This finding was supported by **Dhungana, Nuthall and Nartea (2004)** and **Linn and Maenhout (2019)**. They stated that use of seed was very high in rice farming in Nepal and Myanmar. The use of excess seeds caused many farms to be in decreasing

returns to scale condition. The use of excess seeds was mostly encouraged by cultivating system in tidal lowland. *Tabela* is well-known seedling system by farmers. In fact, the optimal use of seeds was 20 kg to 30 kg per hectare with seeding. *Tabela* is abbreviation from three words (*Tebar Benih Langsung*) in Bahasa Indonesia. *Tabela* was done by spreading seed out directly to land without first seeding. When *tabela* was applied, seeds would flow out with water. Therefore, seeds were useless. *Tabela* is often known as *sonor*. *Tabela* was followed by burning land in land preparation (**Wildayana, Armanto and Junedi, 2017**). This cultivation system was a local wisdom for tidal lowland farmers in Telang Rejo Village. The cultivation system made spacing of crops irregular, and caused the rice production of tidal lowlands to be low. Furthermore, the varieties used by farmers are *ciherang*, IR 42 or others. That was developed by farmers with technology limitations. In addition, it is possibly not water stress tolerant variety. One of the problems in tidal lowlands is a need for water because tidal lowlands depend on tides. Therefore, a water stress tolerant variety is needed by farmers in tidal lowland agriculture to increase rice production. *Inpara-3* is a suitable variety to tidal lowlands (**Saidi et al., 2014**). However, the farmers do not adopt it yet.

Labour was also a factor that did not affect rice production in tidal lowlands. The available labour force in tidal lowland agriculture is very low. In fact, many transmigrant farmers sold their land and farms given by the government to return to their homeland on Java Island. Then, many farmers migrated to find other work in the capital city of South Sumatra Province (Palembang). It occurred along cultivation season. Therefore, a large labour force for agriculture and farming in Telang Rejo Village was not available. Moreover, some farmers changed their jobs from agricultural jobs to non-agricultural jobs. The majority of them worked in construction in the capital city of South Sumatra Province or became workers on an engine boat in the Musi River. Musi River is the longest river of South Sumatra. It is also used as transportation like Mekong River in Vietnam. The case of labour migration also occurred in China. The available labour for agricultural jobs has decreased

significantly (Peng, Tang and Zou, 2009). It will be a challenges of rice production. The other cause was agricultural mechanisation. Many farmers used machines for land preparation, harvesting and other activities.

CONCLUSION

This paper concluded that rice production on tidal lowlands was inefficient. Only 47.31% of rice farming was efficient. They were in constant returns to scale. Meanwhile, 5.38% of rice farming was inefficient under increasing returns to scale and 47.31% of rice farming was inefficient under decreasing returns to scale. The factors affecting rice production in tidal lowlands were N, P, and K fertiliser, herbicides, insecticides and fungicides. In terms of policy implications, the need for rice varieties tolerant to tidal lowlands, use of organic fertilizer such as livestock dung, compost and others to achieve sustainability of tidal lowlands, seed nursery training by agricultural extension and also policies regarding the use of agricultural inputs, including doses and the other factors, so that rice production in tidal lowlands can be improved to achieve efficiency and food security in Indonesia.

REFERENCES

Adeyonu, A. G., Balogun, O. L., Ajiboye, B. O., Oluwatayo, I. B., Otunaiya, A. O. 2019. Sweet potato production efficiency in Nigeria: application of data envelopment analysis. *AIMS Agriculture and Food*, vol. 4, no. 3, p. 672-684. <https://doi.org/10.3934/agrfood.2019.3.672>

Adriani, D., Wildayana, E. 2015. Integrasi pertumbuhan ekonomi dan penciptaan kesempatan kerja sektor pertanian di indonesia (Economic growth integration and employment opportunities creation in agricultural sector of indonesia creation). *Sosiohumaniora*, vol. 17, no. 3, p. 203-211. (In Indonesian). <https://doi.org/10.24198/sosiohumaniora.v17i3.8381>

Ahmaedu, J., Alufohai, G. O. 2012. Estimation of technical efficiency of irrigated rice farmers in Niger State, Nigeria. *American-Eurasian Journal of Agricultural and Environmental Sciences*, vol. 12, no. 12, p. 1610-1616. <https://doi.org/10.5829/idosi.ajeaes.2012.12.12.1918>

Al-Mashadani, A. K., Mahmood, Z. H. 2019. Estimating profit , cost function and technical efficiencies of rice production in Nejaf for season 2016. *Iraqi Journal of Agricultural Sciences*, vol. 50, no. 5, p. 1237-1246.

Ali, A. I., Seiford, L. M. 1993. Computational accuracy and infinitesimals in data envelopment analysis. *INFOR: Information Systems and Operational Research*, vol. 31, no. 4, p. 290-297. <https://doi.org/10.1080/03155986.1993.11732232>

Armanto, M. E. 2014. Spatial mapping for managing oxidized pyrite (FeS₂) in South Sumatra wetlands , Indonesia. *Journal of Wetlands Environmental Management*, vol. 2, no. 2, p. 60-66. <https://doi.org/10.20527/jwem.v2i2.27>

Armanto, M. E., Adzemi, Wildayana, E., Imanudin, M. S. 2013. Land evaluation for paddy cultivation in the reclaimed tidal lowland in Delta Saleh South Sumatra Indonesia. *Journal of Sustainability Science and Management*, vol. 8, no. 1, p. 32-42.

Ar-Riza, I., Alkasuma. 2008. Argicultural Land Tidal Swamp and Development Strategy Era of Regional Autonomy. *Jurnal Sumberdaya Lahan*, vol. 2, no. 2, p. 95-104. <https://doi.org/10.2017/jsdl.v2n02.2008.%25p>

Arnade, C. A. 1994. "Using Data Envelopment Analysis to

Measure International Agricultural Efficiency and Productivity." *Agriculture and Trade Analysis Division, Economic Research Service, U.S. Department of Agriculture*. (Technical Bulletin No. 1831.). p. 1-30.

Arsyad, D. M., Saidi, B. B., Enrizal. 2014. Pengembangan inovasi pertanian di lahan rawa pasang surut mendukung kedaulatan pangan (Development of agricultural innovations in tidal swamp land for increasing food sovereignty). *Pembangunan Inovasi Pertanian*, vol. 7, no. 4, p. 169-176. (In Indonesian). <https://doi.org/10.21082/pip.v7n4.2014.169-176>

Avkiran, N. K. 2015. An illustration of dynamic network DEA in commercial banking including robustness tests. *Omega (United Kingdom)*, vol. 55, p. 141-50. <https://doi.org/10.1016/j.omega.2014.07.002>

Banker, R., Natarjan, R. Zhang, D. 2019. Two-stage estimation of the impact of contextual variables in stochastic frontier production function models using data envelopment analysis: second stage OLS versus bootstrap approaches. *European Journal of Operational Research*, vol. 278, no. 2, p. 368-384. <https://doi.org/10.1016/j.ejor.2018.10.050>

Central Bureau of Statistics of Banyuasin Regency. 2018. *Kabupaten Banyuasin dalam angka (Banyuasin in figures)*. Pangkalan Balai, Indonesia: BPS Kabupaten Banyuasin. 330 p. (In Indonesian). ISSN: 2356-4172

Central Bureau of Statistics of Indonesia. 2017. *Kajian konsumsi bahan pokok tahun 2017 (Study of staple food consumption in 2017)* Jakarta, Indonesia: BPS RI. 84 p. (In Indonesian). ISBN 978-602-438-277-3

Central Bureau of Statistics of Indonesia. 2019. *Statistik Indonesia 2019 (Statistical yearbook of Indonesia 2019)*. Jakarta, Indonesia: BPS RI. 738 p. (In Indonesian). ISSN 0126-2912

Charnes, A., Cooper, W. W., Rhodes, E. 1978. Measuring the efficiency of decision making units. *European Journal of Operational Research*, vol. 2, no. 6, p. 429-444. [https://doi.org/10.1016/0377-2217\(78\)90138-8](https://doi.org/10.1016/0377-2217(78)90138-8)

Charnes, A., Cooper, W. W., Rhodes, E. 1979. Short Communication: Measuring the Efficiency of Decision-Making Units. *European Journal of Operational Research*, vol. 3, no. 6, p. 339. [https://doi.org/10.1016/0377-2217\(79\)90229-7](https://doi.org/10.1016/0377-2217(79)90229-7)

Coelli, T. J., Rao, D. S. P., O'Donnell, C. J., Battese, G. E. 2005. *An introduction to efficiency analysis*, New York: Springer US. p.349. ISBN 978-0-387-24265-1. <https://doi.org/10.1007/b136381>

Cullinane, K., Song, D. W., Wang, T. 2005. The application of mathematical programming approaches to estimating container port production efficiency. *Journal of Productivity Analysis*, vol. 24, no. 1, p. 73-92. <https://doi.org/10.1007/s11123-005-3041-9>

Dhungana, B. R., Nuthall, P. L., Nartea, G.V. 2004. Measuring the economic inefficiency of Nepalese rice farms using data envelopment analysis. *The Australian Journal of Agricultural and Resource Economics*, vol. 48, no. 2, p. 347-369 <https://doi.org/10.1111/j.1467-8489.2004.00243.x>

Duangbootsee, U., Myers, R. J. 2014. Technical efficiency of Thai jasmine rice farmers: comparing price support program participants and non-participants. In *The Agricultural & Applied Economics Association's 2014 AAEA Annual Meeting*. Minneapolis, USA: Publisher : Agricultural & Applied Economics Association. p. 1-26. <https://doi.org/10.22004/ag.econ.170713>

Erwidodo. 1990. Panel data analysis on farm-level efficiency, input demand and output supply of rice farming in

- West Java, Indonesia (unpublished PhD dissertation). Michigan State University. USA.
- Färe, R., Grosskopf, S., Lovell, C. A. K. 1985. *The Measurement of Efficiency of Production*. Berlin, Germany: Springer Science+Business Media, 216 p. ISBN 978-94-015-7721-2. <https://doi.org/10.1007/978-94-015-7721-2>
- Färe, R., Grosskopf, S., Karagiannis, G., Margaritis, D. 2017. Data envelopment analysis and its related linear programming models. *Annals of Operations Research*, vol. 250, no. 1, p. 37-43. <https://doi.org/10.1007/s10479-015-2042-y>
- Fatimah, S., Mahmudah, U. 2017. Two-stage data envelopment analysis (DEA) for measuring the efficiency of elementary schools in Indonesia. *International Journal of Environmental and Science Education*, vol. 12, no. 8, p. 1971-1987. <http://ijese.net/makale/1955>
- Gedara, K. M., Wilson, C., Pascoe, S., Robinson, T. 2012. Factors affecting technical efficiency of rice farmers in village reservoir irrigation systems of Sri Lanka. *Journal of Agricultural Economics*, vol. 63, no. 3, p. 627-638. <https://doi.org/10.1111/j.1477-9552.2012.00343.x>
- Gholami, R., Higón, D. A., Emrouznejad, A. 2015. Hospital performance: efficiency or quality? can we have both with IT?. *Expert Systems with Applications*, vol. 4, no.12, p.5390-5400. <https://doi.org/10.1016/j.eswa.2014.12.019>
- Government regulation #12 of 2012, Law Number 18 of 2012, concerning food by the grace of almighty god president of the republic of Indonesia.*
- Guzman, I., Arcas, N., Ghelfi, R., Rivaroli, S. 2009. Technical efficiency in the fresh fruit and vegetable sector: a comparison study of Italian and Spanish firms. *Fruits*, vol. 64, no. 4, p. 243-252. <https://doi.org/10.1051/fruits/2009018>
- Haji, J. 2007. Production efficiency of smallholders' vegetable-dominated mixed farming system in eastern ethiopia: a non-parametric approach. *Journal of African Economics*, vol. 16, no. 1, p. 1-27. <https://doi.org/10.1093/jae/ej1044>
- Hoang, V. N., Alauddin, M. 2012. Input-orientated data envelopment analysis framework for measuring and decomposing economic, environmental and ecological efficiency: an application to OECD agriculture. *Environmental and Resource Economics*, vol. 51, no. 3, p. 431-452. <https://doi.org/10.1007/s10640-011-9506-6>
- Hoang, V. N., Nguyen, T. T. 2013. Analysis of environmental efficiency variations: a nutrient balance approach. *Ecological Economics*, vol. 86, p. 37-46. <https://doi.org/10.1016/j.ecolecon.2012.10.014>
- Hu, X., Liu, C. 2016. Profitability performance assessment in the Australian construction industry: a global relational two-stage DEA method. *Construction Management and Economics*, vol. 34, no. 3, p. 147-159. <https://doi.org/10.1080/01446193.2016.1180415>
- Imanudin, M. S., Armanto, M. E. 2012. "Effect of Water Management Improvement on Soil Nutrient Content, Iron and Aluminum Solubility at Tidal Low Land Area." In *2nd International Conference on Asia Agriculture and Animal (ICAAA 2012) APCBEE Procedia*. Singapore, Singapore. Publisher: Elsevier Procedia. p. 253-258. ISBN 9781627483803. <https://doi.org/10.1016/j.apcbee.2012.11.043>
- Iráizoz, B., Rapún, M., Zabaleta, I. 2003. Assessing the technical efficiency of horticultural production in Navarra, Spain. *Agricultural Systems*, vol. 78, no. 3, p. 387-403. [https://doi.org/10.1016/S0308-521X\(03\)00039-8](https://doi.org/10.1016/S0308-521X(03)00039-8)
- Irwandi, D. 2015. Strategi peningkatan pemanfaatan lahan rawa pasang surut dalam mendukung peningkatan produksi beras di Kalimantan Tengah. (Utilization increasing strategy of swap tidal lowlands to support rice production improvement in Central Kalimantan. *Agriekonomika*, vol. 4, no. 1, p. 97-106. <https://doi.org/10.21107/agriekonomika.v4i1.677>
- Jalilov, S., Mainuddin, M., Maniruzzaman, Md., Alam, M. Md, Islam, Md. T., Kabir, Md. J. 2019. Efficiency in the rice farming: evidence from Northwest Bangladesh. *Agriculture (Switzerland)*, vol. 9, no. 11, p. 245-259. <https://doi.org/10.3390/agriculture9110245>
- Jansen, H. G. P., Rodriguez, A., Domon, A., Pender, J., Cheiner, J., Schipper, R. 2006. Determinants of income-earning strategies and adoption of conservation practices in hillside communities in rural Honduras. *Agricultural Systems*, vol. 88, no. 1, p. 92-110. <https://doi.org/10.1016/j.agsy.2005.06.005>
- Khushalani, J., Ozcan, Y. A. 2017. Are hospitals producing quality care efficiently? an analysis using dynamic network data envelopment analysis (DEA). *Socio-Economic Planning Sciences*, vol. 60, p. 15-23. <https://doi.org/10.1016/j.seps.2017.01.009>
- Kočišová, K. 2015. Application of the DEA on the measurement of efficiency in the EU countries. *Agricultural Economics (Czech Republic)*, vol. 61, no. 2, p. 51-62. <https://doi.org/10.17221/107/2014-AGRICECON>
- Kotey, B., O'Donnell, C. J. 2002. Data envelopment analysis in small and medium enterprises: a study of the Australian food, beverages and tobacco manufacturing industry. *Small Enterprise Research*, vol. 10, no. 2, p. 3-22. <https://doi.org/10.5172/ser.10.2.3>
- Koutsoyiannis, A. 2001. *Theory of Econometric: An Introductory Exposition of Econometric Methods*. 2nd ed. London United Kingdom: Palgrave MacMillan. 601 p. ISBN 13: 9780333778227
- Linh, V. H. 2012. Efficiency of rice farming households in Vietnam. *International Journal of Development Issues*, vol. 11, no. 1, p. 60-73. <https://doi.org/10.1108/14468951211213868>
- Linn, T., Maenhout, B. 2019. Measuring the efficiency of rice production in Myanmar using data envelopment analysis. *Asian Journal of Agriculture and Development*, vol. 16, no. 2, p. 1-24. <https://doi.org/10.22004/ag.econ.298422>
- Majumder, S., Bala, B. K., Arshad, F. M., Haque, M. A., Hossain, M. A. 2016. Food security through increasing technical efficiency and reducing postharvest losses of rice production systems in Bangladesh. *Food Security*, vol. 8, no. 2, p.361-374. <https://doi.org/10.1007/s12571-016-0558-x>
- Mardani, M., Salarpour, M. 2015. Measuring technical efficiency of potato production in Iran using robust data envelopment analysis. *Information Processing in Agriculture*, vol. 2, no. 1, p. 6-14. <https://doi.org/10.1016/j.inpa.2015.01.002>
- Nurita, Ar-Riza, I. 2014. Peningkatan Produksi padi berkelanjutan pada lahan rawa pasang surut (Increasing of sustainable rice production on swampland). *Jurnal Teknologi Pertanian Universitas Mulawarman*, vol. 9, no.1, p. 1-7. (In Indonesian).
- Nguyen, H. O., Nguyen, H. V., Chang, Y. T., Chin, A. T. H., Tongzon, J. 2016. Measuring port efficiency using bootstrapped DEA: the case of Vietnamese ports. *Maritime Policy and Management*, vol. 43, no. 5, p. 644-659. <https://doi.org/10.1080/03088839.2015.1107922>
- O'Donnell, C. J. 2018. *Productivity and Efficiency Analysis: An Economic Approach to Measuring and Explaining Managerial Performance*. Singapore, Singapore: Springer Nature Singapore Pte Ltd., 434 p. ISBN 978-981-13-

2984-5. <https://doi.org/10.1007/978-981-13-2984-5>

Oemar, A. 2003. Optimalisasi pemanfaatan lahan pasang surut untuk pengembangan agribisnis tanaman pangan dan hortikultura di Kalimantan Tengah (Optimization of tidal lowlands utilization to horticulture and food agribusiness in Central Kalimantan). In *Seminar Hasil-Hasil Penelitian dan Pengkajian Teknologi Pertanian*. Palangkaraya, Indonesia: Balai Pengkajian Teknologi Pertanian Kalimantan Tengah, p. 1-7. (In Indonesian)

Peng, S., Tang, Q., Zou, Y. 2009. Current status and challenges of rice production in China. *Plant Production Science*, vol. 12, no. 1, p. 3-8. <https://doi.org/10.1626/pps.12.3>

Piya, S., Kiminami, A., Yagi, H. 2012. Comparing the technical efficiency of rice farms in urban and rural areas : a case study from Nepal. *Trends in Agricultural Economics*, vol. 5, no. 2, p. 48–60. <https://doi.org/10.3923/tae.2012.48.60>

Purnomo, E., Mursyid, A., Syarwani, M., Jumberi, A., Hashidoko, Y., Hasegawa, T., Honma, S., Osaki, M. 2005. Phosphorus solubilizing microorganisms in the rhizosphere of local rice varieties grown without fertilizer on acid sulfate soils. *Soil Science and Plant Nutrition*, vol. 51, no. 5, p. 679-681. <https://doi.org/10.1111/j.1747-0765.2005.tb00090.x>

Rajasekar, T., Deo, M. 2014. Is there any efficiency difference between input and output oriented DEA models: an approach to major ports in India. *Journal of Business & Economic Policy*, vol.1, no. 2, p. 18-28.

Rios, A., Shively, G. 2005. Farm size and nonparametric efficiency measurements for coffee farms in vietnam. In *The American Agricultural Economics Association Annual Meeting*. Providence Rhode Island : USA. 22 p. <https://doi.org/10.22004/ag.econ.19159>

Roy, R., Chan, N. W., Rainis, R. 2014. Rice farming sustainability assessment in Bangladesh. *Sustainability Science*, vol. 9, no. 1, p. 31-44. <https://doi.org/10.1007/s11625-013-0234-4>

Roy, R., Chan, N. W., Xenarios, S. 2016. Sustainability of rice production systems: an empirical evaluation to improve policy. *Environment, Development and Sustainability*, vol. 18, no. 1, p. 257–278. <https://doi.org/10.1007/s10668-015-9638-x>

Saidi, B. B., Adri, Endrizal, D. M. Arsyad, A. Mulyani, I. Las, dan K. Diwyanto. 2014. *Percepatan pembangunan pertanian berbasis inovasi di lahan rawa pasang surut Kabupaten Tanjung Jabung Timur Provinsi Jambi (Acceleration of innovation-based agricultural development in the tidal lowlands of Tanjung Jabung Timur Regency, Province of Jambi*. Jambi, Indonesia: Balai Pengkajian Teknologi Pertanian Jambi. 11 p. (In Indonesian)

Scholz, U. 1980. Land reserves in southern Sumatra/Indonesia and their potentialities for agricultural utilization. *GeoJournal*, vol. 4, no. 1, p. 19-30. <https://doi.org/10.1007/BF00586752>

Shamshuddin, J., Muhrizal, S., Fauziah, I., Van Ranst, E. 2004. A laboratory study of pyrite oxidation in acid sulfate soils. *Communications in Soil Science and Plant Analysis*, vol. 35, no. 1 &2, p.117-129. <https://doi.org/10.1081/CSS-120027638>

Simar, L. S., Wilson, P. W. 2007. Estimation and inference in two-stage, semi-parametric models of production processes. *Journal of Econometrics*, vol. 136, no.1, p.31-64. <https://doi.org/10.1016/j.jeconom.2005.07.009>

Squires, D., Tabor, S. 1991. Technical efficiency and future production gains in Indonesian agriculture. *The Developing Economies*, vol. 29, no. 3, p. 258-270. <https://doi.org/10.1111/j.1746-1049.1991.tb00211.x>

Susanto, R. H. 2003. Masalah kebakaran dan solusi

berkaitan dengan pengembangan pertanian di areal rawa / gambut (Fire problem and solution regarding to agriculture development in swampland/peatland). In Suyanto, Unna, C., Prianto, W. *Kebakaran di lahan rawa/gambut di Sumatera : masalah dan solusi (Fire on swampland/peatland in Sumatra : problem and solution)*. Jakarta, Indonesia : Center for International Forestry Research. p. 147-176. ISBN 979-3361-49-2 (In Indonesian)

Thanh Nguyen, T., Hoang, V. N., Seo, B. 2012. Cost and environmental efficiency of rice farms in South Korea. *Agricultural Economics (United Kingdom)*, vol. 43, no. 4, p. 369-378. <https://doi.org/10.1111/j.1574-0862.2012.00589.x>

The Ministry of Agriculture of Indonesia. 2007. *Acuan penetapan rekomendasi pupuk N, P dan K pada lahan sawah sepsifik lokasi (A reference to the determination of N, P and K fertilizer recommendations on specific location-based rice field)*. Jakarta, Indonesia: Kementerian Pertanian Indonesia. 230 p. (In Indonesian)

Tipi, T., Yildiz, N., Nargelecekenler, M., Cetin, B. 2009. Measuring the technical efficiency and determinants of efficiency of rice (*Oryza sativa*) farms in Marmara region, Turkey. *New Zealand Journal of Crop and Horticultural Science*, vol. 37, no. 2, p. 121-129. <https://doi.org/10.1080/01140670909510257>

Trewin, R., Weiguo, L., Erwidodo, B. S. 1995. Analysis of the technical efficiency over time of West Javanese rice farms. *Australian Journal of Agricultural Economics*, vol. 39, no. 2, p. 143-163. <https://doi.org/10.1111/j.1467-8489.1995.tb00548.x>

Wang, N., Gao, Y., Li, X., Wang, Y. 2018. Efficiency analysis of grain production inputs: utilization in China from an agricultural sustainability perspective. *Agricultural Research*, vol. 7, no. 1, p. 37-50. <https://doi.org/10.1007/s40003-018-0293-y>

Wang, Y., Shi, L., Zhang, H., Sun, S. 2017. A data envelopment analysis of agricultural technical efficiency of northwest arid areas in china. *Frontiers of Agricultural Science and Engineering*, vol. 4, no.2, p. 195-207. <https://doi.org/10.15302/J-FASE-2017153>

Wanke, P., Barros, C. 2014. Two-stage DEA: an application to major Brazilian banks. *Expert Systems with Applications*, vol. 41, no. 5, p. 2337-2344. <https://doi.org/10.1016/j.eswa.2013.09.031>

Widjaja-Adi, I. P. G., Ratmini, N. P. S., Swastika, I. W. 1997. *Pengelolaan tanah dan air di lahan pasang surut (Soil and water management in tidal lowlands)* Jakarta, Indonesia: Badan Penelitian dan Pengembangan Pertanian Indonesia. 22 p. (In Indonesian).

Wildayana, E., Adriani, D., Armanto, M. E. 2017. Livelihoods , Household Income and Indigenous Technology in South Sumatra wetlands. *Sriwijaya Journal of Environment*. vol. 2, no. 1, p. 25-30. <https://doi.org/10.22135/sje.2017.2.1.25-30>

Wildayana, E., Armanto, M. E. 2018. Dynamics of landuse changes and general perception of farmers on South Sumatra wetlands. *Bulgarian Journal of Agricultural Science*, vol. 24, no. 2, p. 180-188.

Wildayana, E., Armanto, M. E. 2019. The role of subsidized fertilizers on rice production and income of farmers in various land typologies. *Jurnal Ekonomi Pembangunan: Kajian Masalah Ekonomi Dan Pembangunan*, vol. 20, no. 1, p. 100-107. <https://doi.org/10.23917/jep.v20i1.7081>

Wildayana, E., Armanto, M. E., Junedi, H. 2017. Characterizing and analyzing sonor system in peatlands. *Journal of Wetlands Environmental Management*, vol. 5, no. 2, p. 6-13. <https://doi.org/10.20527/jwem.v5i2.109>

Yazid, M., Shamsudin, M. N., Rahim, K. A., Radam, A., Muda, A. 2015. Water service valuation in tidal lowland agriculture. *Pertanika Journal of Social Science and Humanities*, vol. 23, p. 39-46.

Acknowledgment

The authors would like to express great thank to the Directorate General of Science and Technology Resources and the Directorate of Research and Community Service in the Ministry of Research, Technology and Higher Education of Indonesia for funding this research through research grants of PMDSU Batch III scholarship by letter number: 151/SP2H/LT/DRPM/IV/2018.

Contact address:

Khairul Fahmi Purba, PhD Candidate of PMDSU Scholarship Batch III Program, The Graduate School of Universitas Sriwijaya, Faculty of Agriculture, Department of Agribusiness, Jalan Padang Selasa, 524, 30139, Palembang, Indonesia, Tel. +6283196328464,

E-mail: khairulfahmi@student.pps.unsri.ac.id

ORCID: <https://orcid.org/0000-0003-2982-5041>

*Muhammad Yazid, Universitas Sriwijaya, Faculty of Agriculture, Department of Agribusiness, Jalan

Palembang-Prabumulih KM 32, Indralaya, Indonesia, Tel. +628153800550,

E-mail: yazid_ppmal@yahoo.com

ORCID: <https://orcid.org/0000-0003-0374-9132>

Mery Hasmeda, Universitas Sriwijaya, Faculty of Agriculture, Department of Agronomy, Jalan Palembang-Prabumulih KM 32, Indralaya, Indonesia, Tel. +628127126579,

E-mail: m_hasmeda@yahoo.com

ORCID: <https://orcid.org/0000-0001-7462-6282>

Dessy Adriani, Universitas Sriwijaya, Faculty of Agriculture, Department of Agribusiness, Jalan Palembang-Prabumulih KM 32, Indralaya, Indonesia, Tel. +628163286036,

E-mail: dessyadriani@fp.unsri.ac.id

ORCID: <https://orcid.org/0000-0002-0772-5253>

Meitry Firdha Tafari, PhD Candidate of PMDSU Scholarship Batch III Program, The Graduate School of Universitas Sriwijaya, Faculty of Agriculture, Department of Agribusiness, Jalan Padang Selasa, 524, 30139, Palembang, Indonesia, Tel. +6281369699331,

E-mail: meitrytafarini@student.pps.unsri.ac.id

ORCID: <https://orcid.org/0000-0002-9857-1367>

Corresponding author: *