

The Study of Heat Conduction Flow Around Penantian Geothermal Manifestations of South Sumatera

by Frinsyah Virgo

Submission date: 26-May-2023 08:30AM (UTC+0700)

Submission ID: 2102042103

File name: No_5_The_Study_of_Heat_Conduction_Flow_Around_Penantian_FV.pdf (1.12M)

Word count: 2300

Character count: 12003

The Study of Heat Conduction Flow Around Penantian Geothermal Manifestations of South Sumatera

F. Virgo^{1,2}, W. Suryanto³, Wahyudi³

¹(Physics Department, Faculty of Mathematics and Natural Sciences, Sriwijaya University, Indonesia)

²(Postgraduate Student, Physics Department, Gadjah Mada University, Indonesia)

³(Physics Department, Faculty of Mathematics and Natural Sciences, Gadjah Mada University, Indonesia)

Abstract : Conduction heat flow study has been done around the Penantian geothermal manifestations, Empat Lawang Regency, South Sumatera. A study was carried out the measurements of surface temperature and temperature gradient. Surface temperature measurement data were used for the determination of the prospect area and thermal conductivity of rocks. Then, the temperature gradient of measurement data were used to determine the value of the geothermal temperature gradient. The physical quantities obtained, was used to calculate the value of the loss energy of heat conduction naturally. The study showed that the amount of heat energy by conduction was ± 28.29043 Watt.

Keywords: Conductivity, geothermal, temperature, gradient, thermal.

I. Introduction

The Penantian village is located in Pasema Air Keruh, Empat Lawang Regency, South Sumatera, Indonesia (Fig. 1). The UTM Coordinates are X: 25300 and Y: 9572500. There are geothermal manifestations, such as some hot springs, the warm ground and altered rocks (Fig. 2). The manifestation area is about 4000 m², who're a probably geothermal potential. The geothermal potential is prospected to be developed into the power plants. It is shown by hot springs temperature ranging from 60°C to 93°C, type of fluid is sulfuric acid, and reservoir temperature estimate higher than 300°C [1]. Accordingly, the reservoir temperature is above of 225°C, which classified as high-temperature geothermal systems [2]. However, the estimated potential of geothermal reserves can be used as a power plant still unexposed. Information about the magnitude of the natural heat loss value either by conduction or convection is very important in the estimation of the potential of geothermal reserves.

For that reason, the study has been done of heat conduction. The goal is to expose the value to the heat energy loss that flows naturally to the surface in conduction. The benefits of the study can be combined with the value of the natural convection heat loss in the calculation of the total natural heat loss. Furthermore, the natural heat loss value of the total was used to estimate the potential reserves of geothermal energy.

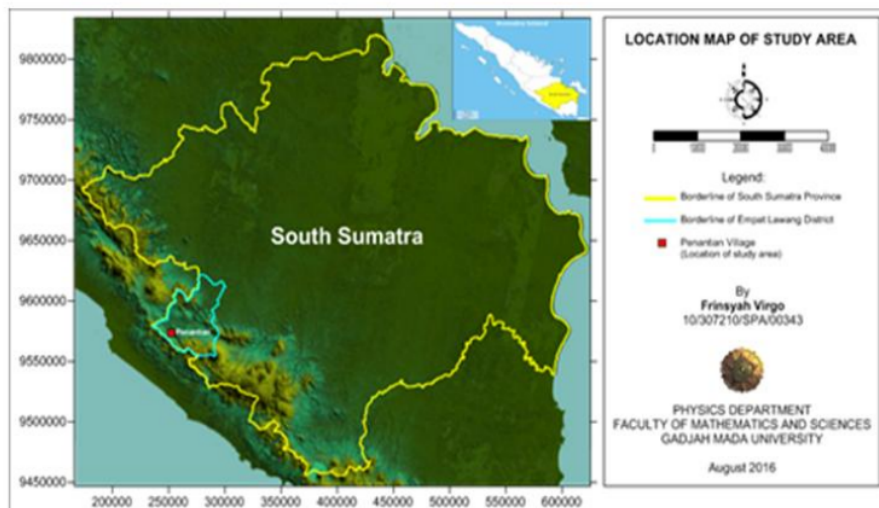


Fig. 1: Location map of study area.

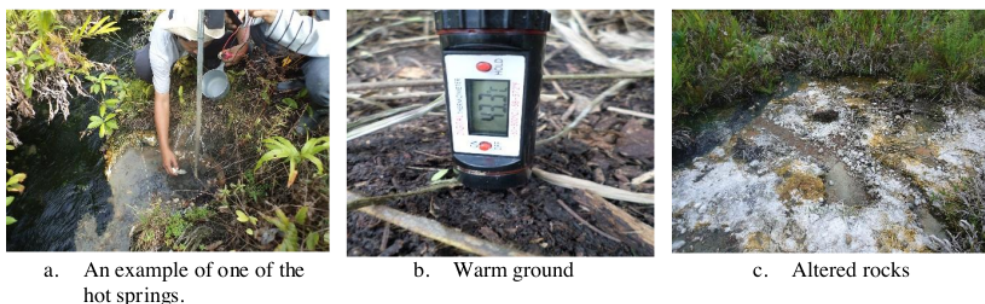


Fig. 2: The types of manifestations in the study area.

1. Theory

1.1. Heat conduction

The heat can transfer with three ways: conduction, convection and radiation. Conduction of thermal condition controls on the part of the solid earth, especially on the lithosphere. Convection dominates thermal conditions within the area are fluid, core and mantle. Heat transfer convection followed a mass transfer by heat. In the Earth, radiation occurs just at the core part and the lower part of the coat. So the flow of geothermal heat related to conduction and convection transfers.

Heat conduction can occur due to the transfer of kinetic energy of molecules or atoms in a hot object to a cooler object. Conduction can occur in medium solid and liquid, and is expressed by the following equation of Fourier; [3]

$$\vec{q} = -k \vec{\nabla}T \quad (1)$$

Where \vec{q} is the heat flow per unit area per unit time (also known as heat flow), k is the thermal conductivity of the object (assumed isotropic) and $\vec{\nabla}T$ is a temperature gradient. The negative sign indicates heat flow toward the temperature decreases. In this case, the heat flow is considered toward the earth's surface, i.e. $k (\partial T / \partial z)$, wherein z in the vertical direction to the bottom. $(\partial T / \partial z)$ is called the geothermal gradient by unit $^{\circ}\text{Ckm}^{-1}$ or mK^{-1} . The thermal conductivity depends on the natural conditions that fed heat (units in $\text{Wm}^{-1}\text{K}^{-1}$), and influenced by physical conditions such as temperature.

The magnitude of the rate of heat flow conduction to the surface can be calculated using the following equation: [4]

$$Q = A k dT/dz \quad (2)$$

Where Q is the conductive heat flow (Watt), A is the surface manifestation (m^2), k is the thermal conductivity ($\text{W/m}^{\circ}\text{C}$), and T is the temperature ($^{\circ}\text{C}$).

1.2. The conductivity of rocks

The determination of the value of the thermal conductivity of rocks from the results of the measurements obtained from the following relations: [5]

$$T = Q (4\pi k)^{-1} \ln (t/t_0) \quad (3)$$

$Q/4\pi k$ is the gradient of temperature change (m), so it can be written:

$$k = Q/4\pi m \quad (4)$$

Where T is the temperature measured ($^{\circ}\text{C}$), Q is the heat flow generated by the gauge (Watt), k is the thermal conductivity of rocks ($\text{W/m}^{\circ}\text{C}$), t_0 is the initial time measurement (seconds), t is the time of the end measurement (seconds), and m is a temperature gradient ($^{\circ}\text{C/m}$).

The knowledge of thermal conductivity is one of the main input parameters in geothermal modelling. An evaluation of this thermal property is needed in several areas, such as modelling the deep geothermal reservoir structure, and assessing the geothermal potential of subsoil [6].

2. Method

The equipment used for this study as follows; 1.5 m stick electronic thermometer is used to measure surface temperature. The stick thermometer of temperature gradient of 2.5 m is used to measuring the vertical

temperature gradient. Surface drilling tools are used for shallow drilling. The stopwatch is used as a timer measurement. GPS is used to determine the position during the measurement. Digital thermometer is used to measure air temperature and manifestations.

2.1. Temperature monitoring

The procedures for temperature monitoring using an electronic thermometer with five sensors planted as deep as 2 m, monitoring is done during 48 hours in one-hour intervals (Fig. 3). The measurement is performed at each of three different positions of manifestation. The goal is to find out the depth of temperature measurement is no longer influenced by the secular variation.



a. Measurement of the temperature monitoring is done during the day.



b. Measurement of the temperature monitoring is carried out at night.

Fig. 3: Example of monitoring temperature measurements carried out on the day and night within 48 hours.

2.2. Measurement of the surface temperature

The measurement procedure is as follows; the stick of the electronic thermometer inserted into the ground as deep as 1 meter. Measurements have made at any point during the 15 minutes, within area 800 x 800 m². The number of measurement points is 84 points. Temperature changes on record in the minutes to 10, 20, 30, 40, 50, 60, 70, 80, 90, 100, 200, 300, 400, 500, 600, 700, 800, 900 (Fig. 4). After that, the value of the measured temperatures is plotted on a graph as a time function. From the graph can be defined gradient dT/dt . The value of this gradient is used in the equation (4), to determine the value of the thermal conductivity of rocks.



a. Examples of surface temperature measurement.



b. Examples of surface temperature measurement.

Fig. 4: Measurement of surface temperature.

2.3. Measurement of temperature gradient

The measurement procedure is as follows; the measurement is carried out on the three different positions around the manifestation. The Measurement was using an electronic temperature gradient stick that

was planted at a depth of 2 m (Fig. 5). The stick is equipped with temperature sensors for each interval of the depth of 0.5 m to get good results, this embedded thermometer left in advance in one day one night, so going to the environment temperature equilibrium. After that, the temperature changes recorded each of the intervals of 0.5 m (Fig. 5). Furthermore, the value changes of temperature as a depth function or the vertical temperature gradient will be obtained.



Fig. 5: Measurement of temperature gradient.

II. Results and Discussion

Measurement results of temperature monitoring at three different positions can be seen (Fig. 6, Fig. 7, and Fig. 8). According to the third of the picture, at a depth of 5 m can be seen that the influence of the secular variation very dominant, especially from the sun. The influence can still be seen up to a depth of 0.5 m, although the influences that brought about much smaller than the depth 0 m. Instead of each sensor in a depth of 1 m, 1.5 m and 2 m, seen that the temperature measurement is relatively constant with respect to time. Based on the above, the measurement of the surface temperature should be done at a depth of 1 m, because the secular variation does not affect the measurement.

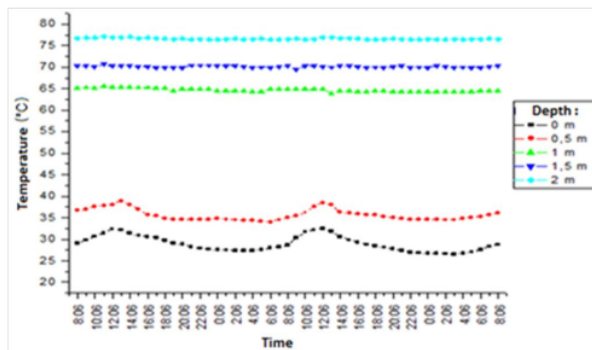


Fig. 6: Graph of temperature changes, at the point of monitoring 1.

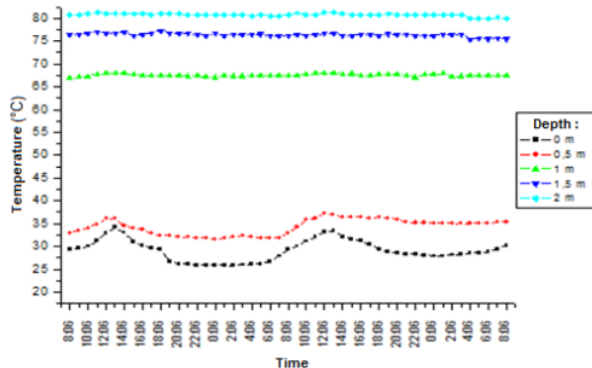


Fig. 7: Graph of temperature changes at the point of monitoring 2.

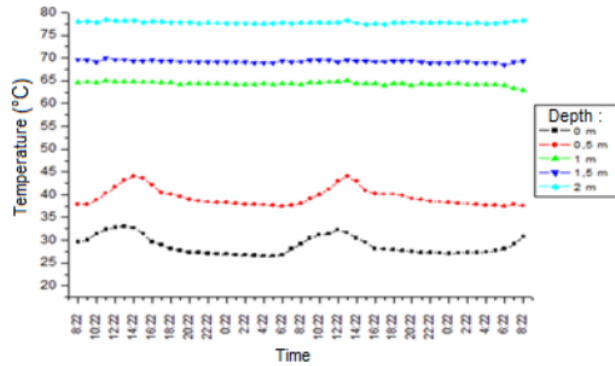


Fig. 8: Graph of temperature changes at the point of monitoring 3.

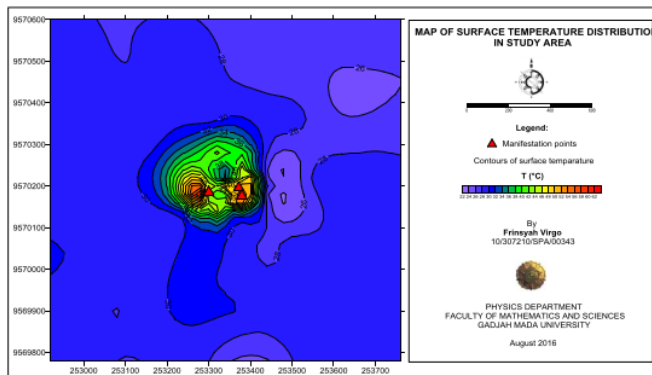


Fig. 9. Surface temperature distribution map in the study area.

Distribution of closer contour patterns of surface temperature (see Fig. 9), can be considered as a hot prospect area extension. Later, the area is calculated using software Rockwork. The results was 51690 m². This area was used in the calculation of the magnitude of the loss in natural heat conduction.

Measurement of the surface temperature at a depth of 1 m, temperature gradient values obtained at each measurement point. Using Equation (4), the value of thermal conductivity measurement at each point can be determined ($Q_{tools} = 10.99$ Watts). Fig.10 shows that the distribution of the value of k varies between -12 up to 2 W/m°C. The relatively high value of k is concentrated around the manifestation. This is in accordance with the distribution of heat on the surface temperature distribution map, which greater heat concentration is located close to the vicinity of the manifestation.

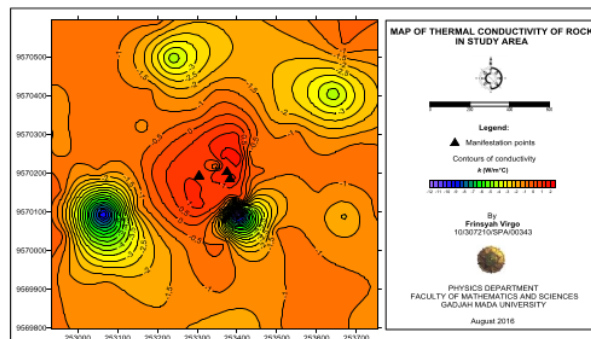


Fig. 10: Map of the distribution of the thermal conductivity of rocks in the study area.

The results of measurements of the vertical temperature gradient can be seen in Table 1. The gradient value is retrieved (using Equation 2) is used together with the value of the thermal conductivity of rocks, and the prospect area extents to determine the magnitude of the value of natural heat loss by conduction. From Table 2 it can be seen that the value of natural heat loss is equal to 28.29043 Watt.

Table 1. The vertical temperature gradient measurement data.

Measurement Points	Position (m)			Temp. (°C) of sensor position (m)						Grad. (°C) of each sensor			Gradient (°C/m)	Av. Grad. (°C/m)
	X	Y	Elev.	0	0.5	1	1.5	2	0.5	1	1.5	2		
Manifestation-1	253373	9570214	341	28.92	35.63	64.65	70.11	76.59	6.71	29.20	5.45	6.48	4.853	
Manifestation-2	253359	9570213	349	29.07	34.25	67.54	76.38	80.76	5.18	33.29	8.45	4.38	5.369	5.165
Manifestation-3	253362	9570222	346	28.78	39.40	64.38	69.25	77.78	10.6	24.98	4.87	8.54	5.271	

Table 2. Calculation of heat loss occurs naturally in conduction.

Measurement Points	Temperature Gradient (°C/m)	Thermal Conductivity (W/m°C)	Prospect Area (m ²)	Q (Watt)
Manifestation-1				
Manifestation-2	5.165	0.105965045	51690	28290.43
Manifestation-3				

The study shows that the value of heat loss by conduction is relatively small. This was caused by a number of manifestations encountered a bit, and extent of the heat prospect area obtained from the data processing is also fairly small. However, these results can be used together with the results obtained from the convection heat flow analysis, to determine the total of potential loss of heat to the actual surface.

If combined with the results of geochemical research that has been done [1] which states that the geothermal potential in this area is the prospect to be developed into a power plant. Thus, it can be interpreted that the small amount of fluid flow of heat reaching the surface can not be linked directly to the amount of the potential for geothermal energy is produced. In contrast, little or the least amount of fluid flow of heat rising the surface can be interpreted that the potential heat energy stored below the surface likely still relatively large.

III. Conclusion

The value of loss energy by conduction which flows to the surface around the Penantian geothermal manifestation was 28290.43 Watt.

Acknowledgements

On this occasion, I convey my many thanks to the Director General of HIGHER EDUCATION of the Ministry of national education, on research funding provided through Fundamental Research Grants fiscal year 2013. So the study could be completed.

References

- [1]. Virgo F., Karyanto, Ady M., Agus S., Wahyudi, Suhamo, and Wiwit S., Water Geochemical Analysis Within Penantian Geothermal Area in Pasema Air Keruh, Empat Lawang District, South Sumatra. *Proceeding, The 12th Annual Indonesian Geothermal Association Meeting & Conference*, Bandung, Indonesia, 2012.
- [2]. Anonymous, Angka Parameter Dalam Estimasi Potensi Energi Panas Bumi. *SNI 13-6482-2000, ICS 07.060, BSN*, Jakarta, 2000. Retrieved from ITB website: http://geothermal.itb.ac.id/sites/default/files/public/Angka_parameter_energi_geothermal.pdf.
- [3]. Gupta H., and Roy S., *Geothermal Energy; An Alternative Resource for the 21st Century*. (Amsterdam, The Nerherlands: Elsevier B V, 2007)
- [4]. Mwawasi H. M., Geothermal mapping using shallow hole temperature measurement: A case study of Korosi, Chepchuk and Paka, *Proceeding, Kenya Geothermal Conference, Kenyatta International Conference Centre*, Nairobi, Kenya, 2011.
- [5]. Hidayat A.H., Sismanto, and Suparwoto, Pengukuran Suhu dan Konduktivitas Panas di Daerah Sumber Mata Air Panas Krakal, Alian, Kebumen, Jateng. *Proceeding, PITXXVI HAGI*, Jakarta, Indonesia, 2001.
- [6]. Sipioa E.D., Chiesa S., Destro E., Galgaro A., Giaretta A., Gola G., and Manzella A., Rock Thermal Conductivity as Key Parameter for Geothermal Numerical Models, *Energy Procedia*, 40, 2013, 87 – 94.

The Study of Heat Conduction Flow Around Penantian Geothermal Manifestations of South Sumatera

ORIGINALITY REPORT

14%

SIMILARITY INDEX

10%

INTERNET SOURCES

7%

PUBLICATIONS

6%

STUDENT PAPERS

MATCH ALL SOURCES (ONLY SELECTED SOURCE PRINTED)

2%

★ Submitted to Unitek College, LLC

Student Paper

Exclude quotes Off

Exclude matches Off

Exclude bibliography Off