

Title:

AFibNet: an implementation of atrial fibrillation detection with convolutional neural network

Authors:

Bambang Tutuko, Siti Nurmaini, Alexander Edo Tondas, Muhammad Naufal Rachmatullah, Annisa Darmawahyuni, Ria Esafri, Firdaus Firdaus, Ade Iriani Sapitri

Journal:

BMC Medical Informatics and Decision Making

Link:

<https://bmcmedinformdecismak.biomedcentral.com/articles/10.1186/s12911-021-01571-1>

1. Submitted to Journal Future Generation Computer Systems (27-01-2021)
2. Transfer Journal and Rejected (30-01-2021)
3. Submitted to BMC Bioinformatics (06-02-2021)
4. Transfer Journal to BMC Medical Informatics and Decision Making (10-02-2021)
5. Major Revision (12-05-2021)
6. Accepted paper in BMC Medical Informatics and Decision Making (30-006-2021)

1. Submitted to Journal Future Generation
Computer Systems (27-01-2021)



Bambang Tutuko <bambangtutuko60@gmail.com>

Confirm co-authorship of submission to Future Generation Computer Systems

1 message

Future Generation Computer Systems <em@editorialmanager.com>
Reply-To: Future Generation Computer Systems <fgcs@elsevier.com>
To: Bambang Tutuko <bambangtutuko60@gmail.com>

Wed, Jan 27, 2021 at 6:51 PM

This is an automated message.

Journal: Future Generation Computer Systems

Title: AFibNet: An Implementation of Atrial Fibrillation Detection with Convolutional Neural Network

Corresponding Author: Professor Siti Nurmaini

Co-Authors: Bambang Tutuko; Annisa Darmawahyuni; Alexander Edo Tondas; Muhammad Naufal Rachmatullah; Ria Esafri; Radiyati Umi Partan; Firdaus Firdaus

Manuscript Number:

Dear Bambang Tutuko,

The corresponding author Professor Siti Nurmaini has listed you as a contributing author of the following submission via Elsevier's online submission system for Future Generation Computer Systems.

Submission Title: AFibNet: An Implementation of Atrial Fibrillation Detection with Convolutional Neural Network

Elsevier asks all authors to verify their co-authorship by confirming agreement to publish this article if it is accepted for publication. As a verified co-author you can also register on the system in order to track the submission status directly.

Please read the following statement and confirm your agreement by clicking on this link: <https://www.editorialmanager.com/fgcs/l.asp?i=183221&l=K4E6ZHRI>

I irrevocably authorize and grant my full consent to the corresponding author of the manuscript to: (1) enter into an exclusive publishing agreement with Elsevier on my behalf, in the relevant form set out at www.elsevier.com/copyright; and (2) unless I am a US government employee, to transfer my copyright or grant an exclusive license of rights to Elsevier as part of that publishing agreement, effective on acceptance of the article for publication. If the article is a work made for hire, I am authorized to confirm this on behalf of my employer. I agree that the copyright status selected by the corresponding author for the article if it is accepted for publication shall apply and that this agreement is subject to the governing law of the country in which the journal owner is located.

If you have not yet registered for the journal on Editorial Manager, you will need to create an account to complete this confirmation. Once your account is set up and you have confirmed your status as Co-Author of the submission, you will be able to view and track the status of the submission as it goes through the editorial process by logging in at <https://www.editorialmanager.com/fgcs/>

If you did not co-author this submission, please contact the corresponding author directly at sitnurmaini@gmail.com.

Thank you,

Future Generation Computer Systems

More information and support

FAQ: What is copyright co-author verification?

https://service.elsevier.com/app/answers/detail/a_id/30181/supporthub/publishing/You will find information relevant for you as an author on Elsevier's Author Hub: <https://www.elsevier.com/authors>

FAQ: How can I reset a forgotten password?

https://service.elsevier.com/app/answers/detail/a_id/28452/supporthub/publishing/kw/editorial+manager/

For further assistance, please visit our customer service site: <https://service.elsevier.com/app/home/supporthub/publishing/>. Here you can search for solutions on a range of topics, find answers to frequently asked questions, and learn more about Editorial Manager via interactive tutorials. You can also talk 24/7 to our customer support team by phone and 24/7 by live chat and email.

In compliance with data protection regulations, you may request that we remove your personal registration details at

4/19/23, 1:16 PM

Gmail - Confirm co-authorship of submission to Future Generation Computer Systems

any time. (Use the following URL: <https://www.editorialmanager.com/fgcs/login.asp?a=r>). Please contact the publication office if you have any questions.

2. Transfer Journal and Rejected (30-01-2021)



Bambang Tutuko <bambangtutuko60@gmail.com>

Submission to Transfer Manager - TRANSFERMGR-D-21-00570

2 messages

Transfer Manager <em@editorialmanager.com>
Reply-To: Transfer Manager <transfermgr@elsevier.com>
To: Bambang Tutuko <bambangtutuko60@gmail.com>

Sat, Jan 30, 2021 at 8:25 PM

You are being carbon copied ("cc:d") on an e-mail "To" "Siti Nurmaini" sitinurmaini@gmail.com
CC: "Bambang Tutuko" bambangtutuko60@gmail.com, "Annisa Darmawahyuni" riset.annisadarmawahyuni@gmail.com, "Alexander Edo Tondas" tondas2000@gmail.com, "Muhammad Naufal Rachmatullah" naufalrachmatullah@gmail.com, "Ria Esafri" ria.esafri@gmail.com, "Radiyah Umi Partan" radiandinadr@yahoo.co.id, "Firdaus Firdaus" virdauz@gmail.com

This is an automated message.

Manuscript Number: TRANSFERMGR-D-21-00570

AFibNet: An Implementation of Atrial Fibrillation Detection with Convolutional Neural Network

Dear Professor Nurmaini,

Your above referenced submission has been assigned a manuscript number: TRANSFERMGR-D-21-00570.

To track the status of your manuscript, please log in as an author at <https://www.editorialmanager.com/TRANSFERMGR/>, and navigate to the "Submissions Being Processed" folder.

Thank you for submitting your work to Transfer Manager.

Kind regards,
Transfer Manager

More information and support

You will find information relevant for you as an author on Elsevier's Author Hub: <https://www.elsevier.com/authors>

FAQ: How can I reset a forgotten password?
https://service.elsevier.com/app/answers/detail/a_id/28452/supporthub/publishing/

For further assistance, please visit our customer service site: <https://service.elsevier.com/app/home/supporthub/publishing/>

Here you can search for solutions on a range of topics, find answers to frequently asked questions, and learn more about Editorial Manager via interactive tutorials. You can also talk 24/7 to our customer support team by phone and 24/7 by live chat and email

In compliance with data protection regulations, you may request that we remove your personal registration details at any time. (Use the following URL: <https://www.editorialmanager.com/TRANSFERMGR/login.asp?a=r>). Please contact the publication office if you have any questions.

Transfer Manager <em@editorialmanager.com>
Reply-To: Transfer Manager <transfermgr@elsevier.com>
To: Bambang Tutuko <bambangtutuko60@gmail.com>

Sat, Jan 30, 2021 at 8:50 PM

You are being carbon copied ("cc:d") on an e-mail "To" "Siti Nurmaini" sitinurmaini@gmail.com
CC: "Bambang Tutuko" bambangtutuko60@gmail.com, "Annisa Darmawahyuni" riset.annisadarmawahyuni@gmail.com, "Alexander Edo Tondas" tondas2000@gmail.com, "Muhammad Naufal Rachmatullah" naufalrachmatullah@gmail.com, "Ria Esafri" ria.esafri@gmail.com, "Radiyah Umi Partan" radiandinadr@yahoo.co.id, "Firdaus Firdaus" virdauz@gmail.com

This is an automated message.

Manuscript Number: TRANSFERMGR-D-21-00570

AFibNet: An Implementation of Atrial Fibrillation Detection with Convolutional Neural Network

Dear Professor Nurmaini,

Your above referenced submission has been assigned a manuscript number: TRANSFERMGR-D-21-00570.

To track the status of your manuscript, please log in as an author at <https://www.editorialmanager.com/transfermgr/>, and navigate to the "Submissions Being Processed" folder.

Thank you for submitting your work to Transfer Manager.

Kind regards,
Transfer Manager

More information and support

You will find information relevant for you as an author on Elsevier's Author Hub: <https://www.elsevier.com/authors>

FAQ: How can I reset a forgotten password?

https://service.elsevier.com/app/answers/detail/a_id/28452/supporthub/publishing/

For further assistance, please visit our customer service site: <https://service.elsevier.com/app/home/supporthub/publishing/>

Here you can search for solutions on a range of topics, find answers to frequently asked questions, and learn more about Editorial Manager via interactive tutorials. You can also talk 24/7 to our customer support team by phone and 24/7 by live chat and email

In compliance with data protection regulations, you may request that we remove your personal registration details at any time. (Use the following URL: <https://www.editorialmanager.com/transfermgr/login.asp?a=r>). Please contact the publication office if you have any questions.

3. Submitted to BMC Bioinformatics (06-02-2021)



Bambang Tutuko <bambangtutuko60@gmail.com>

BMC Bioinformatics - Receipt of Manuscript 'AFibNet: An Implementation...'

1 message

BMC Bioinformatics <bmcbioinformatics@biomedcentral.com>
To: bambangtutuko60@gmail.com

Sat, Feb 6, 2021 at 9:41 AM

Ref: Submission ID 8001fea4-e8f2-4329-ac1c-72c35bc63f4c

Dear Dr Tutuko,

Please note that you are listed as a co-author on the manuscript "AFibNet: An Implementation of Atrial Fibrillation Detection with Convolutional Neural Network", which was submitted to BMC Bioinformatics on 06 February 2021 UTC.

If you have any queries related to this manuscript please contact the corresponding author, who is solely responsible for communicating with the journal.

Kind regards,

Peer Review Advisors
BMC Bioinformatics****Our flexible approach during the COVID-19 pandemic****

If you need more time at any stage of the peer-review process, please do let us know. While our systems will continue to remind you of the original timelines, we aim to be as flexible as possible during the current pandemic.

4. Transfer Journal to BMC Medical Informatics and Decision Making (10-02-2021)



Bambang Tutuko <bambangtutuko60@gmail.com>

BMC Medical Informatics and Decision Making - Receipt of Manuscript 'AFibNet: An Implementation...'

1 message

BMC Medical Informatics and Decision Making
<bmcmedicalinformaticsanddecisionmaking@biomedcentral.com>
To: bambangtutuko60@gmail.comWed, Feb 10,
2021 at 8:55 AM

Ref: Submission ID 70337a31-80a0-4d6f-ba31-c952ef5447fd

Dear Dr Tutuko,

Please note that you are listed as a co-author on the manuscript "AFibNet: An Implementation of Atrial Fibrillation Detection with Convolutional Neural Network", which was submitted to BMC Medical Informatics and Decision Making on 10 February 2021 UTC.

If you have any queries related to this manuscript please contact the corresponding author, who is solely responsible for communicating with the journal.

Kind regards,

Peer Review Advisors
BMC Medical Informatics and Decision Making****Our flexible approach during the COVID-19 pandemic****

If you need more time at any stage of the peer-review process, please do let us know. While our systems will continue to remind you of the original timelines, we aim to be as flexible as possible during the current pandemic.

5. Major Revision (12-05-2021)



Bambang Tutuko <bambangtutuko60@gmail.com>

BMC Medical Informatics and Decision Making: Decision on "AFibNet: An Implementation of Atrial Fibrillation Detection with Convolutional Neural Network"

1 message

BMC Medical Informatics and Decision Making <do-not-reply@springernature.com>

Wed, May 12, 2021 at 8:04 AM

To: bambangtutuko60@gmail.com

Dear Dr Tutuko,

Re: "AFibNet: An Implementation of Atrial Fibrillation Detection with Convolutional Neural Network"

The corresponding author has been asked to revise the above submission on which you are listed as a contributing author. Meanwhile, we would be grateful if you would carefully check the author details, including spelling and sequence of given and family names; email and affiliation:

Corresponding author:

Siti Nurmaini

sitinurmaini@gmail.com

Intelligent System Research Group, Faculty of Computer Science, Universitas Sriwijaya, Palembang, 30139, Indonesia ID

Bambang Tutuko

bambangtutuko60@gmail.com

Intelligent System Research Group, Faculty of Computer Science, Universitas Sriwijaya, Palembang, 30139, Indonesia ID

Alexander Edo Tondas

edotondas@fk.unsri.ac.id

Department of Cardiology & Vascular Medicine, Dr. Mohammad Hoesin Hospital, Palembang, Indonesia ID

Muhammad Naufal Rachmatullah

naufalrachmatullah@gmail.com

Intelligent System Research Group, Faculty of Computer Science, Universitas Sriwijaya, Palembang, 30139, Indonesia ID

Annisa Darmawahyuni

riset.annisadarmawahyuni@gmail.com

Intelligent System Research Group, Faculty of Computer Science, Universitas Sriwijaya, Palembang, 30139, Indonesia ID

Ria Esafri

ria.esafri@gmail.com

Intelligent System Research Group, Faculty of Computer Science, Universitas Sriwijaya, Palembang, 30139, Indonesia ID

Firdaus Firdaus

virdauz@gmail.com

Intelligent System Research Group, Faculty of Computer Science, Universitas Sriwijaya, Palembang, 30139, Indonesia ID

Ade Iriani Sapitri

adeirianisapitri13@gmail.com

Intelligent System Research Group, Faculty of Computer Science, Universitas Sriwijaya, Palembang, 30139, Indonesia ID

If you spot any errors, please contact the corresponding author directly to ensure the revision moves smoothly through the submission process.

Kind regards,

Peer Review Advisors

Dear reviewers,

We would like to thank the reviewers for encouraging comments. It helps us make this work clearer to understand, and the constructive comments helped us improve the quality of the Manuscript.

We appreciate the time and effort that you have dedicated to providing your valuable feedback on our manuscript. We are grateful to you for your insightful comments on our paper. We have been able to incorporate changes to reflect most of the suggestions provided by the reviewers. We have highlighted the changes within the manuscript.

Here is a point-by-point response to the reviewer' comments and concerns.

Reviewer#1, Concern 1.

In this manuscript, a cloud-based 1D-convolutional neural network is trained with single-lead ECGs of different length and frequency sampling from different devices for end-to-end implementation of AF detection. The purposes are to enhance the robustness of the AF detection model and to develop a cloud DL server for AF diagnosis system to realize real-time analysis for signals detected by short-term ECG devices. The overall expression of the manuscript is clear, however, there are still some questions with this manuscript, and some sessions need to be carefully revised :

Page 8, 'All ECG signals are segmented into 2700 samples for one episode.', but what to do with the extra points when segmenting signals is not mentioned. For example, whether "truncation" and "zero-filling" are needed?

Thank you for pointing this out. To make it clearer, we add the explanation if the segmentation is less than 2700 nodes. We use 'zero-padding' or 'zero-filling' techniques that consists of extending a signal with zeros. Please kindly check in the revised manuscript.

We have revised some sentences in the paragraph, please kindly check in the section with sentence:

"All ECG signals are segmented into 2700 samples for one episode. If the total nodes are less than 2700 nodes, we add zero-padding technique that consists of extending a signal with zeros."

Reviewer#1, Concern 2.

Page 9, 'Explainable Feature Learning in 1D-CNNs', Why are the features learning in network 'explainable'?

Thank you for your critical question. Literally before, the meaning of 'explainable' in 'Explainable Feature Learning in 1D-CNNs' section is to describe and explain all feature learning process from convolutional layer, pooling, flattening and fully connected layer. As we can see in Table 2 (feature learning interpretation), we mention all hyperparameters of each 1D-CNNs structure; i.e., input nodes, filter number, kernel size/pool size, output nodes, and feature interpretation.

However, to reduce misunderstanding, we removed ‘explainable’ word and changed to ‘Feature Learning in 1D-CNNs’ section only.

Reviewer#1, Concern 3.

Page 12, ‘As shown in Table 5, when the data are increased, ... the classifiers produce 10 FN and 29 FP that impact the approach output.’, but to which part of Table 5 it corresponds should be explained more clearly.

We are sorry for the unclear meaning that described in this part. Therefore, we try to make it clear. The meaning of “As shown in Table 5, when the data are increased, the proposed model of misclassified data shows that the classifiers produce 10 FN and 29 FP that impact the approach output”, is the total data of unseen testing (that presented in Table 5). First, **we have tested one-by-one unseen database**; i.e., ECG Long Term AF, Paroxysmal AF, MIT-BIH Arrhythmia, AF Termination Challenge, Fantasia, Indonesian Hospital (ECG 1), Indonesian Hospital (ECG 2), and ECG recording from Chapman University and Shaoxing People’s Hospital. Then, **when we combined all unseen data, the performance is decreased**, with total data of 1,712 normal and 1,898 AF. When we combine all unseen data, there was misclassified data shows that the classifiers produce 10 FN and 29 FP.

We have revised some sentences in the paragraph, please kindly check in the section with sentence:

“In this work, the procedure has been tested on all unseen data testing in order to detect any false positive (FP) and false negative (FN) predictions as a way to clarify the robustness of the technique. As shown in Table 5, when the data are increased (combined all unseen data), the proposed model of misclassified data shows that the classifiers produce 10 FN and 29 FP that impact the approach output. The performance result achieved of 98.94% accuracy and 98.97% for both sensitivity and specificity.”

Reviewer#1, Concern 4.

It is said that the signals monitored by short-term ECG devices can be analyzed in real time. Can the hardware acceleration ability of Cloud Server meet the requirements of real-time validation?

Thank you for your concern. One of key aspects of real-time processing is time latency. the processing delay must be bounded even if the processing continues for an unlimited time. That means that the mean processing time per sample is no greater than the sampling period. it shown in Figure 4, the fastest processing time obtained by CPU 2 + GPU with 0.009 seconds. It includes several processes such as reading input, denoising, and inferencing 0.02 seconds of ECG signal. Hence, it can infer that processing time is faster than the sampling period thus the cloud server meets the requirement of real-time processing.

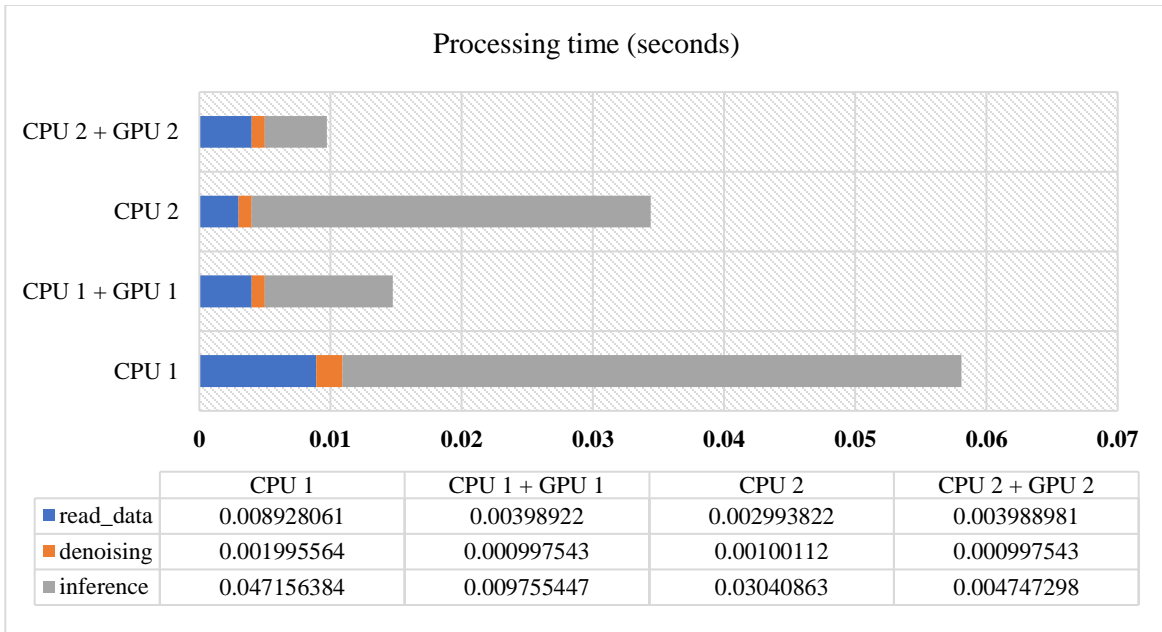


Figure 4. Processing time of 1D-CNNs in four server specification

Reviewer#1, Concern 5.

There are grammar and punctuation problems in the manuscript, which should be carefully checked and modified. For example: On page 8, ‘model was proposed by Nurmaini et al’ should be ‘model proposed by Nurmaini et al’; On page 9, the ‘FC-layersAs’ is missing ‘.’ before ‘As’; ...

We apologize for these mistakes.

We are sorry for our limitation in grammar and punctuation problems in the manuscript. We revised the manuscript to fix the grammar and punctuation problem.

Reviewer#2, Concern 1.

This paper presents a cloud-based method to detect AF. The algorithm to detect AF is based on a 1-D CNN model which has been previously published and the main novelty of this work is the implementation of a real-time system. The system is still not freely available and no proof of concept has been conducted to validate the system prospectively. Thus, I think this manuscript only presents marginal novel content, which is not sufficient to justify a new publication.

We thank the reviewer for bringing these novel researches into our knowledge. To make this research is sufficient with novel contribution we improved our research with summary are as follow;

- Currently, we have not yet deployed a system, we will propose in the future studies. This is the second stage of the development of a real-time AF detection system, with an emphasis on model generalization and robustness. The proposed model has tested with real time implementation using a cloud server. The propose model developed is based on 11 data sets, with broad range frequencies (125 – 500 Hz) and it has validated with patient data from Indonesian Hospital by using intra and inter-patient scenario.
- The concept of our study is to proposes a real time processing system by using a cloud computing approach. The results are validated with three performances such as, (1) processing time (read data, denoising, and inference time), (2) processing time of load model in cloud system, and (3) throughput value. One of key aspects of real-time processing is time latency, the processing delay must be bounded even if the processing continues for an unlimited time. It means that the processing time per sample is no greater than the sampling period. In our study, it shown that the fastest processing time obtained by CPU 2 + GPU about 0.009 seconds. It includes several processes such as reading input, denoising, and inferencing 0.02 seconds of ECG signal. Hence, it can infer that processing time is faster than the sampling period thus the cloud server meets the requirement of real-time processing. All the results to proof the concept of our propose AFibNet model can be seen in Figure 4, Figure 5 and Figure 6 in the revised manuscript.
- In this study we conducted two cases of AFibNet model validation, two-class (N and AF) and three-class (N, AF and Non-AF) classification. For two-class case, we use 11,842 subjects with inter-patient mechanism (data for training/validation process is difference with data testing). About 11 total datasets utilize to ensure the generalization and robustness of the propose model.
- To further demonstrate the success of the generalization and to increase confidence the proposed model, we have added another 18 arrhythmias rhythms as the Non-AF class. For three-class case, we use 26,349 subjects with intra-patient mechanism.

All non-AF ECG signal data, namely as follow;

No	Non-AF conditions
1.	First-Degree Atrioventricular Block (I-AVB)
2	Left Bundle Branch Block (LBBB)

3	Right Bundle Branch Block (RBBB)
4	Premature Atrial Contraction (PAC)
5	Premature Ventricular Contraction (PVC)
6	ST-segment Depression (STD)
7	ST-segment Elevated (STE)
8	Sinus Bradycardia (SB)
9	Sinus Tachycardia (ST)
10	Atrial Flutter (AFL)
11	Sinus Irregularity (SI)
12	Supraventricular Tachycardia (SVT)
13	Atrial Tachycardia (AT)
14	Atrioventricular Node Re-entrant Tachycardia (AVNRT)
15	Atrioventricular Re-entrant Tachycardia (AVRT)
16	Sinus Atrium to Atrial Wandering Rhythm (SAAWR)
17	Other rhythms
18	Noisy signal

The results obtained show that the model we propose produces good performance when testing two-class classification (Normal and AF), as well as three-class classification (N, AF and Non-AF). All analysis and experiment can be seen in the revised manuscript.

Reviewer#2, Concern 2

Moreover, some initial assumptions of this work are and/or unclear. Thus, the authors mention that "conventional ML requires a separate technique of feature engineering that can be computational expensive". However, DL algorithms are extremely more expensive than ML algorithms from a computational point of view. Thus, from that point of view the advantage of DL learning algorithms from ML methods is unclear.

Thank you for identifying this point.

The proposed DL architecture in our paper was based on 1D (one-dimensional) CNNs. Operations on a one-dimensional CNN are only scalar multiplication, not matrix multiplication like two-dimensional (2-D)-CNNs. Therefore, the computational costs on the 1D-CNNs are about the same as the traditional machine learning methods. However, the traditional ML needs a feature engineering step that requires domain knowledge. Moreover, due to the feature engineering process, the inference pipeline of the ML algorithms becomes longer compared to deep learning.

In the revised manuscript, the above statement has added.

Reviewer#2, Concern 3

On the other hand, the authors mention that " the use of DL for AF detection remains essentially unexplored". However, as they cited, in the last years dozens of publications introducing CNN-

based algorithm for AF detection can be found in the literature. The advantages and disadvantages of the proposed method regarding this wide literature should be better explained.

Thank you for the positive description of the contribution of the paper. We have added the advantage and disadvantage of our proposed method in the revised manuscript.

We demonstrate that an end-to-end approach using 1D-CNNs has the ability to classify Normal, AF and Non-AF rhythms in single-lead ECGs from a wide variety of separate ECG devices with a diagnostic efficiency close to that of cardiologists. The proposed method differs with other methods, due to it verified in clinical settings (inter and intra-patient), has the potential to enhance the precision, performance, and scalability of ECG interpretation. The advantages of our proposed model are high generalization capability for broad range of ECG devices, simple segmentation process, and robust performance.

However, our proposed model also has some limitations, which can be summarized as follows:

1. Our method is validated only for N, AF and Non-AF detection, whereas a wide variety of different arrhythmias detected from single-lead ECGs need to be classified in the future and researched in depth to confirm a high diagnostic output close to that of cardiologists;
2. The proposed single learning method will be tailored to the target application prior to clinical application, which could entail additional pre- or post-processing steps;
3. Our DL-cloud architecture, which was not focused on the calculations of actual workloads and real computing platforms, was only available for neural network inference in terms of software frameworks and hardware acceleration.

Reviewer#2, Concern 4.

Also, although the analysis of 11 databases is mentioned, how they were arranged to training, testing and external validation is unclear. In fact, the text and the table 1 provides contradictory information. Given that CNNs memorize many information, training and external validation with ECG signals from different patients is a key aspect. Thus, this aspect should be clarified in the manuscript.

Thank you for pointing this out. We are really appreciated for discuss about the mentioned 11 databases.

In the paragraph text of “Dataset” section (2.1), we have described the information of 11 mentioned database generally. Next, we have summarized the information of each database in Table 1 (which the total records of 11,842 which consisted of 7,409 training, 823 validation, and 3,610 testing/unseen data). In this process, all data sets differed in the lengths of signal recording and frequency sampling. Based on all 11 datasets, we separated three main processes: training, validating, and testing (external validation). The summarize as follow;

- **Training and Validation:**
For the training and validation process, we have only used three datasets (MIT-BIH Atrial Fibrillation, the 2017 PhysioNet/CinC Challenge, and the China Physiological Signal Challenge 2018 databases).

- **Testing (External validation):**
The model then was tested using the other eight datasets, i.e., MIT-BIH Arrhythmia, ECG Long Term, Paroxysmal AF, AF Termination Challenge, Fantasia, ECG recording from Chapman University and Shaoxing People's Hospital, Indonesian Hospital (ECG 1), and Indonesian Hospital (ECG 2).

We have improved our revised manuscript for three-class classification for Normal, AF and Non-AF rhythms. We add 18 arrhythmias' rhythm, therefore the cardiac abnormalities become 20 conditions as defined in Concern 1. In the revised manuscript, it's not only described which N and AF records were used; we have mentioned which Non-AF records that we implemented for three-class classification (refer Table 2).

Reviewer#2, Concern 5.

Moreover, although many datasets contain a wide variety of recordings, only a few of them were selected in many cases. Additional explanations about which ECG signals were chosen should be provided.

Literally, we have mentioned total recording or specific recording that we used of this manuscript, for example MIT-BIH Arrhythmia, we have mentioned in the manuscript, for this study tested the AF rhythm type of the ECG recordings (records 201, 203, 210, 217, 219, and 221). To make it easier to understand, we have described which records are used in the paragraph. Please kindly check in the revised manuscript with yellow marked.

Based on the data distribution, for two-class classification utilize 6072 and 2160 records for N and AF rhythm were used in the training and validation process. All ECG data (about 8,232 records), and after segmentation at 2700 for each record, produced total 54,038 rhythm episodes (refer to Table 4). However, the discussion of using some large number datasets for testing, and the implementation to distinct ECG devices (with varying frequency sampling from 125 -500 Hz) are still limited.

Reviewer#2, Concern 6.

Although the authors have provided standard performance metrics, they only considered two classes, i.e, sinus rhythm and atrial fibrillation. However, the presence of other atrial arrhythmias, such atrial tachycardias, atrial flutter, etc., are common in patients suffering from AF and other supraventricular diseases. The ability of the proposed system to discern AF from these abnormal rhythms should have been analyzed to obtain a realistic view of the ability of the proposed method to detect AF in real-world.

Thank you for your critical concern of this manuscript.

As we explained in concern 1, we add one experiment for three-class classification including Normal, AF and Non-AF to obtain a realistic view of the proposed AFibNet method. The number

of records is increased from **11,842** to **26,349** and it is deeply investigating in this study (refer to Table 1 and Table 2).

Table 1. The data distribution of three-class classification for Normal, AF and Non-AF

Class	Label	Number of Records
Normal	0	7,898
AF	1	3,940
Non-AF	2	14,511
Total		26,349

Table 2. The result for three classes classification case

Fold	Performances (%)				
	Accuracy	Sensitivity	Specificity	Precision	F1-Score
1	76.29	57.02	79.10	53.19	54.12
2	96.37	94.90	97.28	91.83	93.24
3	98.02	96.64	98.46	95.66	96.14
4	99.08	98.41	99.27	97.97	98.19
5	99.29	98.88	99.46	98.24	98.55
6	98.88	98.13	99.14	97.36	97.73
7	99.34	98.89	99.49	98.41	98.64
8	98.22	97.10	98.46	96.59	96.83
9	99.18	98.48	99.34	98.08	98.28
10	98.91	98.01	99.13	97.39	97.69
Average	96.36	93.65	96.92	92.47	92.94

Please find detail in the revised manuscript.

Reviewer#3, Concern 1

The authors have presented a deep learning approach to detect atrial fibrillation from normal sinus rhythm (NSR). The main problem of this manuscript is that the authors used only the AF and NSR rhythms. This is already a well-solved problem and as a result, I don't see any novelty of this study.

Novelty of our study is we demonstrate that an end-to-end AF detection approach using AFibNet model based on 1D-CNNs. Such model has the ability to classify Normal, AF and Non-AF condition (we added an experiments) in single-lead ECGs from a wide variety of separate instruments with a diagnostic efficiency close to that of cardiologists. The main target in this stage is generalization and robustness with real time processing platform. Furthermore, in this stage we create the experiments with large data set from 11 sources, includes the patients from Indonesian Hospital. This method difference with other methods, due to it verified and tested in clinical

settings with intra-patient and inter-patient scheme. It has the potential to enhance the performance, and scalability of ECG interpretation system.

To make it clearer we revised the novelty of our study. Please find detail in the revised manuscript.

Reviewer#3, Concern 2

Although the authors used several data sets, they customized those data sets to include only AF and NSR; thus, excluding other rhythms. Most existing methods for AF detection consider other rhythms because in real-life or in practical data set, AF will be mixed with other rhythms. The major problem of AF detection is the presence of ectopic beats which cause false positive AF detection. So, if the ectopic beats/other rhythms are excluded, then the AF detection problem becomes straightforward.

Thank you for pointing this out. We agree with this comment. Therefore, to enhance more analysis of AF detection, we have improved our research. We are not only explored N and AF conditions, but also Non-AF class. As stated in Concern 1, we add another case in the experiment for other 18 arrhythmias condition belong to Non-AF class as follow;

No	Non-AF condition
1.	First-Degree Atrioventricular Block (I-AVB)
2	Left Bundle Branch Block (LBBB)
3	Right Bundle Branch Block (RBBB)
4	Premature Atrial Contraction (PAC)
5	Premature Ventricular Contraction (PVC)
6	ST-segment Depression (STD)
7	ST-segment Elevated (STE)
8	Sinus Bradycardia (SB)
9	Sinus Tachycardia (ST)
10	Atrial Flutter (AFL)
11	Sinus Irregularity (SI)
12	Supraventricular Tachycardia (SVT)
13	Atrial Tachycardia (AT)
14	Atrioventricular Node Re-entrant Tachycardia (AVNRT)
15	Atrioventricular Re-entrant Tachycardia (AVRT)
16	Sinus Atrium to Atrial Wandering Rhythm (SAAWR)
17	Other rhythms
18	Noisy signal

Table 2. The result for three classes classification case as follow

Fold	Performances (%)				
	Accuracy	Sensitivity	Specificity	Precision	F1-Score
1	76.29	57.02	79.10	53.19	54.12
2	96.37	94.90	97.28	91.83	93.24

3	98.02	96.64	98.46	95.66	96.14
4	99.08	98.41	99.27	97.97	98.19
5	99.29	98.88	99.46	98.24	98.55
6	98.88	98.13	99.14	97.36	97.73
7	99.34	98.89	99.49	98.41	98.64
8	98.22	97.10	98.46	96.59	96.83
9	99.18	98.48	99.34	98.08	98.28
10	98.91	98.01	99.13	97.39	97.69
Average	96.36	93.65	96.92	92.47	92.94

Please find detail analysis in the revised manuscript.

Reviewer#3, Concern 3

It is well-known that AF can be classified easily when only NSR is considered. In fact, with the help of some very simple features (RMSSD, variance, COSEn, Sample entropy etc.), AF is shown to be accurately detected. There are many published methods in the past 15 years which tried to address AF detection problem and they tried to solve AF detection in presence of the ectopic beats and other rhythms.

Agree. Many previous studies have explored AF detection by using conventional computational algorithm, machine learning, and deep learning. In our previous work [ref 13], we have generated the 1D-CNNs model for AF detection.

- To our knowledge, the discussion of using some large number datasets for testing (external validation with clinical data), and the implementation to distinct ECG devices (with varying frequency sampling from 125 -500 Hz) has never been studied before.
- In our manuscript, we used 8,416 and 11,842 total subjects to validate the robustness our proposed model to cloud system in preparation for AF detection services. We have generated the deep learning algorithm (1D-CNNs) with the excellence of automated feature extraction.
- To increase confidence in the proposed model, we have added another 18 arrhythmias condition as the Non-AF class (with total 26,349 subjects) as defined in Concern 2. The results obtained show that the proposed model produces good performance in two-class classification (N and AF), as well as three-class classification (N, AF and Non-AF) scenario.

Reviewer#3, Concern 4

Moreover, the authors referred their previously published paper (ref [13]) which also addressed AF, NSR and one other rhythm. Since in ref [13], authors only tested the AF and NSR, they should be able to compare their own method here. The authors did not show any comparison with state-of-the-art methods or any deep learning methods using the same data sets.

Benchmarking is usually performed using the MIT BIH arrhythmia database or AFDB while no other rhythms are excluded.

Thank you for pointing this out.

- In our previous work [ref 13], we propose the 1D-CNNs model for classifying N, AF, and NAF with limited data of ECG rhythms without implementation in real time processing platform. However, in this recent manuscript, we have tried to generate a comprehensive evaluation of an end-to-end DL approach for AF ECG analysis across a wide variety of diagnostic devices with varying lengths of signal and frequency sampling (100–500 Hz), which has not been previously reported. In addition, in this study we use large data (11,842 to 26,349 subjects) with real time processing platform by using the cloud server, therefore is unfair to compare with it [ref 13].
- None of the current models have been deployed to provide publicly available ECG AF detection services. Therefore, the aim of the present study was to propose a cloud-based 1D-CNNs approach that can be used to enhance AF detection based on CNNs by connecting it to the internet (AFibNet). This approach can provide easy and early detection of a potential AF anytime and anywhere.
- Also, we have validated and implemented the proposed model in a cloud deep learning model with 11,842 subjects for two-class and 26,349 subjects for three-class classification. Three performances have produced, (1) processing time (read data, denoising, and inference time), (2) processing time of load model in cloud system, and (3) throughput value.
- We use inter-patient (two-class case) and intra-patient (three-class case) mechanism, where in the inter-patient the training/validating dataset is separate with testing dataset. The implementation is conducted to confirm a high diagnostic output close to that of cardiologists.

Reviewer#3, Concern 5

Finally, in table 8, the authors compared performance with some other methods. Most methods (Yildirim et al., Hong et al.) used ectopic beats and other rhythms, not only AF and NSR. So, the comparison is not fair. Please note that Torres-Soto et al. used PPG signal, not ECG.

Thank you for this suggestion. We have explored N, AF, and Non-AF case classification. Therefore, the benchmarking of this study to others that also used deep learning techniques are quite fair. We have removed Torres-Soto et al., and apologized for our missed. Thank you for your concern.

RESEARCH

AFibNet: An Implementation of Atrial Fibrillation Detection with Convolutional Neural Network

Bambang Tutuko¹, Siti Nurmaini^{1*}, Alexander Edo Tondas², Muhammad Naufal Rachmatullah¹, Annisa Darmawahyuni¹, Ria Esafri¹, Firdaus Firdaus¹ and Ade Iriani Sapitri¹

*Correspondence:

sitinurmaini@gmail.com

¹Intelligent System Research Group, Faculty of Computer Science, Universitas Sriwijaya, Palembang, 30139, Indonesia

²Department of Cardiology Vascular Medicine, Dr.Mohammad Hoesin Hospital, Palembang, Indonesia

Full list of author information is available at the end of the article

Abstract

Background: Generalization model capacity of deep learning (DL) approach for atrial fibrillation (AF) detection remains lacking. It can be seen from previous researches, the DL model formation used only a single frequency sampling of the specific device. Besides, each electrocardiogram (ECG) acquisition dataset produces a different length and sampling frequency to ensure sufficient precision of the R–R intervals to determine the Heart Rate Variability (HRV). An accurate HRV is the gold standard for predicting the AF condition; therefore, a current challenge is to determine whether a DL approach can be used to analyze raw ECG data in a broad range of devices. This paper demonstrates powerful results for end-to-end implementation of AF detection based on a convolutional neural network (AFibNet). The method used a single learning system without considering the variety of signal lengths and frequency samplings. For implementation, the AFibNet is processed with a computational cloud-based DL approach. This study utilized a one-dimension convolutional neural networks (1D-CNNs) model for 11,842 subjects. It was trained and validated with 8,232 records based on three datasets and tested with 3,610 records based on eight datasets. The predicted results, when compared with the diagnosis results indicated by human practitioners, showed a 99.80% accuracy, sensitivity, and specificity.

Result: Meanwhile, when tested using unseen data, the AF detection reaches 98.94% accuracy, 98.97% sensitivity, and 98.97% specificity at a sample period of 0.02 seconds using the DL Cloud System. To improve the confidence of the AFibNet model, it also validated with 18 arrhythmias condition defined as Non-AF-class. Thus, the data is increased from 11,842 to 26,349 instances for three-class, i.e., Normal sinus (N), AF and Non-AF. The result found 96.36% accuracy, 93.65% sensitivity, and 96.92% specificity.

Conclusion: These findings demonstrate that the proposed approach can use unknown data to derive feature maps and reliably detect the AF periods. We have found that our cloud-DL system is suitable for practical deployment

Keywords: Cloud Deep Learning; 1D-Convolutional neural network; Atrial Fibrillation

Introduction

A single pulse of an electrocardiogram (ECG) signal consists of the morphology, heart rate, regularity, wave segments, relative amplitudes, timing intervals, and normalized energy in a beat or a rhythm [1]. ECG is a popular non-invasive tool used to classify healthy and unhealthy cardiac activity based on a time series signal

[2] [3]. An estimated 300 million or more ECGs are recorded worldwide every year [2], representing a tremendous amount of data for cardiologists to analyze.

One electrophysiologic disturbance within the atria that can be observed by ECG is termed atrial fibrillation (AF) [2]. AF is the most prevalent severe abnormal heart rhythm associated with a fast heart rate. It refers to an abnormal, rapid, and non-synchronized muscle fiber contraction with complex pathophysiology [4][5][6][7], and is recognized as an independent risk factor for stroke, with important clinical and economic consequences. Diagnosing the symptoms is important before treatment of this severe disease; however, existing commercial ECG devices for AF detection methods still show actual misdiagnosis rates. This is largely due to the lack of generalizability caused by tuning only for specific medical devices [8].

Continuous or real-time monitoring of an ECG may help distinguish heart abnormalities. All ambulatory 12-lead ECG systems are designed to ensure reliable AF detection. In environments such as primary care centers and emergency units, where no experts are available to examine and interpret ECG tracings, these ECG devices are commonly used. Unfortunately, these devices are pricey, time-consuming, challenging to use, and require long-term exposure for AF measurements [9]. An automatic and accurate interpretation is critical in low and middle-income countries, and could potentially prevent 75% of cardiovascular disease deaths [9], as those populations often do not have access to cardiologists with full expertise in ECG diagnosis. In fact, medical professionals in those environments typically have limited diagnostic expertise in interpreting 12-lead ECGs [10][9]. Therefore, a simple AF detection that does not require hospital visits and is publicly accessible is required for better diagnosis.

The use of single-lead ECG with short-term detection is currently prevalent in daily applications because the device is simple, low cost, and easy to use [11]. Regardless, AF detection using short-term signal detection can be missed in many cases due to the lack of data standardization collection, the processing procedures used, and the inconsistent reporting of technological factors, such as frequency sampling [12][13]. Several short-term ECG instruments have variable signal quality, frequencies, and lengths for detecting AF episodes. Data may also need to be sampled at a different target frequency, when dealing with multiple instruments that are sampled at various frequencies. However, choosing data sampled at a certain frequency will influence the generalization potential and complexity of the model [13]. Therefore, the chosen approach must be robust without decreasing effectiveness of the device to detect AF [13]. Hence, a basic approach for enhancing short-term AF identification with acceptable results is desirable.

Many of the computer-aided ECG signals proposed for AF detection over the past 50 years are based on machine learning (ML) [14] and have been used in commercial ECG medical devices [15]. Two significant bottlenecks that still hinder early auto-detection are the energy limitations of the continuous monitoring equipment and the lack of efficient ML-based models for AF prediction. In addition, conventional ML requires a separate technique of feature engineering that can be computationally expensive. The desired ML-based solution for automatic AF diagnosis therefore requires high accuracy but it also needs to be computationally efficient [16].

Recently, deep learning (DL) methods have shown great potential in the health-care and medical areas [17][17][18]. Specifically, some pioneering work has shown

success in using DL methods for AF detection [19][20][21]. DL models can be trained to perform beat and rhythm detection/classification using ECG data collections but, unfortunately, the use of DL for AF detection remains essentially unexplored [22]. One DL approach is to use convolutional neural networks (CNNs) architecture with feature engineering embedded into the learning structure. Actually, the CNNs is a type of DL that excels in processing 2D data, such as images. However, by considering signals as 1-dimensional (1D) data, studies have shown promising results using convolutions for signal processing [20][23][24][25]. **Operations on a 1D-CNNs are only scalar multiplication, not matrix multiplication like two-dimensional (2D) CNNs. Therefore, the computational costs on the 1D-CNNs are about the same as the traditional machine (ML) methods. However, the traditional ML needs a feature engineering step that requires domain knowledge. Due to the feature engineering process, the inference pipeline of the ML algorithms becomes longer compared to DL algorithms [13]. Moreover, 1D-CNNs show superiority in AF signal processing and have outperformed both recurrent neural networks (RNNs) and deep neural networks (DNNs) [13]**

Previous studies have shown that 1D-CNNs can successfully provide fast and accurate classification of long-term ECG records. They can analyze the morphological characteristics and learn the slit variation of an input signal during a short-term ECG [13]. The 1D-CNNs model is developed for patient-specific ECG classification [26]. A nine-layer CNNs model for classifying five types of heartbeats from initial signals used an augmentation technique and had a precision of 94.03% [27]. A 1D-CNNs model consisting of 33 convolutional layers based on a massive ECG dataset of 91,232 records from 53,549 patients was able to identify 12 rhythm categories [28]. A generic CNNs has been presented for patient-specific ECG classification [29]. The use of modified U-net architecture has been suggested to diagnose beat-wise arrhythmia [30]. A 31-layer 1D residual CNNs model was developed to identify five different types of heartbeats [31]. A customized CNN model has been recommended to classify patient-specific heartbeats using 44 records [32]. A CNNs model has been applied for classification of 17 cardiac arrhythmias using long-duration ECG signals [33]. An end-to-end deep learning model has been proposed to classify 15 ECG classes [34]. However, despite this extensive study of the 1D-CNNs algorithm for classification/detection of ECG wave signals, the robustness of this algorithm remains an important issue and these methods are still far removed from practical applications [35].

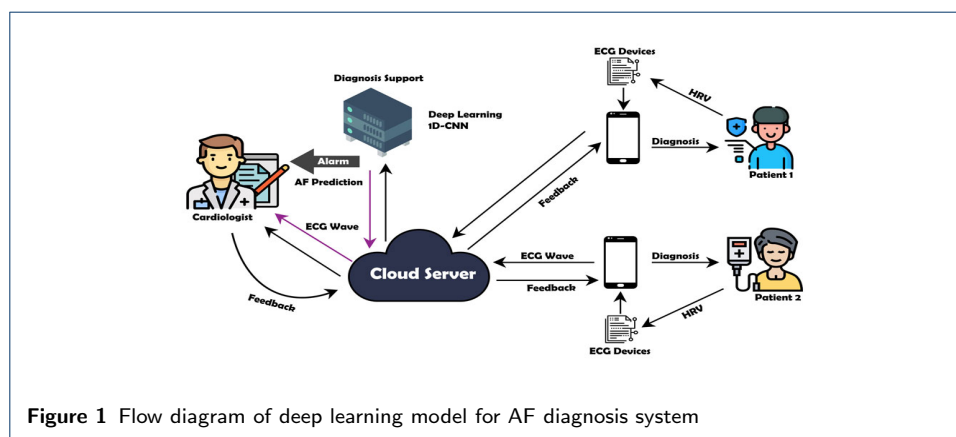
Computerized ECG signal interpretation plays a critical role in the clinical workflow. Digital ECG data are readily accessible and the DL algorithmic model offers an opportunity to greatly increase the precision and scalability of automated ECG analysis [28]. **A comprehensive evaluation of an end-to-end DL approach for AF ECG analysis across a wide variety of diagnostic devices has not been previously reported. None of the current models have been deployed to provide publicly available ECG AF detection services. Therefore, the aim of the present study was to propose a cloud-based 1D-CNNs approach that can be used to enhance AF detection based on CNNs by connecting it to the internet (AFibNet). This approach can provide easy and early detection of a potential AF anytime and anywhere. This study make the following novel contributions are:**

- Implementing an end-to-end of AF detection in a broad range of distinct ECG devices.
- Developing a generalization model for 1D-CNNs into a single learning system named AFibNet.
- Implementing the proposed AFibNet model in a cloud deep learning system with 11,842 subjects for two-class classification (N and AF) with inter-patient mechanism and 26,349 subjects for three-class classification (N, AF, and Non-AF) with intra-patient mechanism.
- Validating of the robustness of the proposes model through a cloud system in preparation for publicly available ECG AF detection services.

The rest of this paper is organized as follows: Section 2 explains the method, and Section 3 presents the result and discussion. Finally, the conclusions are presented in Section 4.

Method

Currently, health care information technology uses a cloud service to develop a system that combines medical devices and applications [24][36][37]. The use of these technologies connects patients to their physicians and facilitates the sharing of medical data over a safe network, thereby eliminating needless hospital visits and lessening the burden on the health care system [28]. The patients can measure their own heart conditions and the measurement results of ECG signal recording are delivered to a central storage location for centralized decision-making. These measurement data are usually physiological signals in the cardiac ECG signal domain, such as beat, rhythm, and HRV [38]. The patients use short-term ECG devices and transmit the HRV signals to a mobile device for relay to the cloud server. Figure 1 shows a framework for collecting and analyzing ECG device data from a cloud server. Once the ECG data are collected, they are transferred to the mobile terminal via Bluetooth and displayed in real time, then transmitted to the cloud through WIFI or 4G [39]. The DL architecture then validates and analyzes the incoming HRV signals in real time. If the model detects AF in the signals, a cardiologist is informed. The cardiologist can then review the suspicious HRV trace as a beat or rhythm and reach a diagnosis. The diagnosis can later be communicated to the patient in a simple scheme.



This work proposes only the DL-based cloud system with the 1D-CNNs model in the main processing system for AF diagnosis support. The cloud-based DL is important for the AF diagnosis as it provides an accurate medical interpretation system. To ensure that the implementation works properly in all stages, all parts of the DL-based cloud system design are presented as follows.

Dataset

In this study, nine public ECG databases are utilized: the MIT-BIH Atrial Fibrillation [40], the 2017 PhysioNet/CinC Challenge [41], the China Physiological Signal Challenge 2018 [42], ECG Long Term AF [43], Paroxysmal AF [41], AF Termination Challenge [44], Fantasia [45], MIT-BIH Arrhythmia [46], and ECG recording from Chapman University and Shaoxing People's Hospital [47], as well as two ECG signal recording databases collected from an Indonesian Hospital. Based on all these datasets, we separated three main processes: training, validating, and testing. In this process, all data sets differed in the lengths of signal recording and frequency sampling. All databases were collected from a short single-lead recording with different ECG devices. As a result a diverse length of signal recording was formed varying from 10 seconds to 25 hours and frequency varying from 100 to 500 Hz.

In the experimental study to measure the generalization and robustness of the proposed model, we conducted two cases evaluation, the two-class classification (N and AF) and three-class classification (N, AF, Non-AF). For two-class case, three datasets (MIT-BIH Atrial Fibrillation, the 2017 PhysioNet/CinC Challenge, and the China Physiological Signal Challenge 2018 databases), was used for training and validating. The model then was tested using the other eight datasets. The summary and samples of the ECG dataset used in this study for two-class case are shown in Table 1. As we can see on Table 1, the total subjects consist of 7,409 training, 823 validation, and 3,610 testing/unseen data. The total records for N and AF rhythm contained 7,784 N and 4,058 AF records.

The three-class case, five datasets (MIT-BIH Atrial Fibrillation, The 2017 PhysioNet/CinC Challenge, The China Physiological Signal Challenge 2018, ECG recording from Chapman University and Shaoxing People's Hospital, and ECG recording from an Indonesian Hospital) was used for training and validating. However, due to data limitation, the trained model was not tested on unseen data. Table 2 shows the data description of ECG signal from 18 arrhythmias condition as indicated Non-AF class. The Non-AF class consists of 18 arrhythmias condition. The summary of Non-AF can be presented in Table 2, which consist of 7,898 N, 3,940 AF, and 14,511 Non-AF records.

The total ECG data from 11,842 subjects for two-class and 26,349 for three-class cases, can be described as follows:

- MIT-BIH Atrial Fibrillation

This database has 23 public ECG recordings taken from AF patients every 10 hours. The ECG signals were sampled at 250 Hz, with four types of rhythm annotations such as AF, atrial flutter, AV junctional rhythm, and all other rhythms. The analog ECG recordings were made at the Beth Israel Deaconess Medical Center using ambulatory ECG recorders with a typical recording bandwidth of approximately 0.1 Hz to 40 Hz.

- The 2017 PhysioNet/CinC Challenge
All ECG records were sampled at 250 Hz by a single lead with four types of rhythms such as N, AF, Non-AF, and Noisy. We selected the recordings from N, AF, and Non-AF rhythms. All ECG recordings were collected using the AliveCor device for 9 to 60 seconds.
- The China Physiological Signal Challenge 2018
This database was collected from 11 hospitals sampled at 500 Hz, with ECG normal and abnormal types. All 12-lead ECG recordings lasted from 6 to 60 seconds and were taken from 3178 female and 3699 male patients. The present study used only single lead (Lead II) data which consist of N rhythm about 981 records, AF rhythm about 1,098 records, and Non-AF rhythms about 4,861 records, respectively.
- ECG Long Term AF
This database has 84 long-term ECG recordings of subjects with paroxysmal or sustained AF. Each record was digitized at 128 Hz, and the durations vary but are typically 24 to 25 hours. The 38 records indicated as AF termination rhythm were utilized in the present study. The original recordings were digitized and automatically annotated at Boston's Beth Israel Deaconess Medical Center. Steven Swiryn and George Moody annotated the AF terminations.
- Paroxysmal AF
This challenge database consists of 50 pairs of half-hour ECG recordings sampled at 128 Hz. The database consists of group A, who experienced Paroxysmal AF (PAF) rhythm and group N rhythm who did not have PAF. We have tested group A only, with a total of 48 records.
- MIT-BIH Arrhythmia
The database was digitized at 360 samples per second and contains 48 half-hour excerpts of two-channel ambulatory ECG recordings. The database was obtained from 47 subjects studied by the BIH Arrhythmia Laboratory between 1975 and 1979. The database has two types: beats and rhythms. This study tested the AF rhythm type of the ECG recordings (records 201, 203, 210, 217, 219, and 221).
- AF Termination Challenge
This database is divided into a learning set and two test sets. The learning set contains 30 AF rhythm records in total, with 10 records in each of three groups (N, S, and T). Each record was sampled at 128 Hz, and the segments were extracted from 20–24 hour ECG recordings. The ECG recordings were created for use in the Computers in Cardiology Challenge 2004. Among the three groups, the present study used group T, in which the AF terminates immediately.
- Fantasia
All ECG recordings of N rhythm subjects were digitized at 250 Hz. Each set includes the respiration belt data from 20 young (21–34 years old) and 20 elderly (68–86 years old) subjects. For unseen data testing, the present study used only 24 records randomly chosen from the young and elderly cohorts. The respiration signals were collected by 120 minutes of continuous supine resting while under continuous ECG.

- ECG recording from Chapman University and Shaoxing People’s Hospital
This database includes a large number of individual subjects (more than 10,000) with 12-lead ECG signals sampled at a higher than usual sampling rate of 500 Hz. The database includes 11 heart rhythms and 56 types of cardiovascular conditions labelled by professional physicians. The ECG records were acquired over 10 seconds. **The ECG recordings were collected from 10,646 patients, including 5,956 males and 4,690 females. In the present study, we utilized 1,826 N rhythm, 1,780 AF rhythm and 7,040 Non-AF rhythms data selected from Lead II.**
- ECG recording from an Indonesian Hospital
The Indonesian Hospital dataset contained sampled at 500 Hz (ECG 1) and 400 Hz (ECG 2). For ECG 1, the database consist of N rhythm about 42 records, AF rhythm about 3 records and Non-AF rhythms about 7 records. In addition, 13 AF rhythm records for ECG 2. All ECG records were collected for 10 seconds. The ECG database was collected by clinicians from patients who use ambulatory ECG devices (February to June 2020).

Table 1 ECG Record description for two-class case (N and AF)

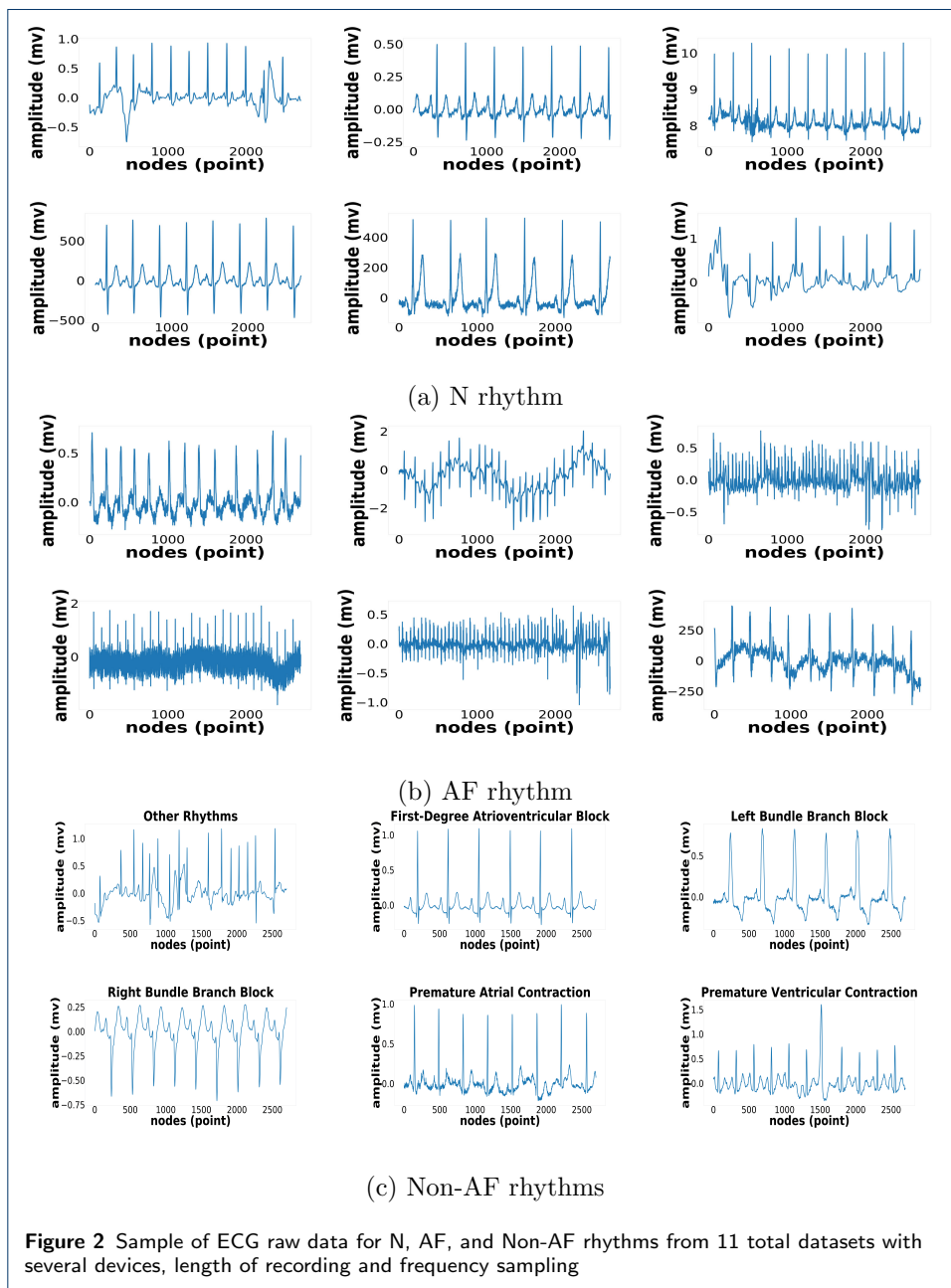
Dataset	Frequency Sampling (Hz)	Class	Records	Training Data	Validation Data	Testing/ unseen data
PhysioNet/CinC Challenge 2017	300	N	5154			-
		AF	771			-
China Physiological Signal Challenge 2018	500	N	918	7,409	823	-
		AF	1098			-
MIT-BIH Atrial Fibrillation	250	AF	291			-
MIT-BIH Arrhythmia	360	AF	6	-	-	-
ECG Long Term	128	AF	38	-	-	-
Paroxysmal AF	128	AF	48	-	-	-
AF Termination Challenge	128	AF	10	-	-	-
Fantasia	250	N	24	-	-	-
ECG recording from Chapman University and Shaoxing People’s Hospital	500	N	1646	-	-	-
		AF	1780	-	-	3,610
Indonesian Hospital (ECG 1)	500	N	42	-	-	-
		AF	3	-	-	-
Indonesian Hospital (ECG 2)	400	AF	13	-	-	-
Total				7,409	823	3,610

Table 2 ECG Record description for three-class case (N, AF, and Non-AF)

Dataset	Frequency Sampling (Hz)	Conditions	Class	Records	Training Data	Validation Data	
PhysioNet/CinC Challenge 2017	300	N	N	5154			
		AF	AF	771			
		Others	Non-AF	2557			
		Noisy		46			
		Normal	N	918			
China Physiological Signal Challenge 2018	500	AF (Atrial Fibrillation)	AF	1098			
		I-AVB (First-Degree Atrioventricular Block)		704			
		LBBB (Left Bundle Branch Block)		207			
		RBBB (Right Bundle Branch Block)		1695			
		PAC (Premature Atrial Contraction)	Non-AF	574			
		PVC (Premature Ventricular Contraction)		653			
		STD (ST-segment Elevated)		826			
		STE (ST-segment Elevated)		202			
				23,714			2,635
MIT-BIH Atrial Fibrillation	250	AF (Atrial Fibrillation)	AF	291			
ECG recording from Chapman University and Shaoxing People's Hospital	500	SR (Sinus Rhythm)	N	1826			
		AF (Atrial Fibrillation)	AF	1780			
		SB (Sinus Bradycardia)		3889			
		ST (Sinus Tachycardia)		1568			
		AFL (Atrial Flutter)		445			
		SI (Sinus Irregularity)		399			
		SVT (Supraventricular Tachycardia)	Non-AF	587			
		AT (Atrial Tachycardia)		121			
		AVNRT (Atrioventricular Node Reentrant)		16			
		AVRT (Atrioventricular Reentrant Tachycardia)		8			
SAAWR (Sinus Atrium to Atrial Wandering Rhythm)		7					
Indonesia Hospital (ECG 1)	500	Non-AF (Other rhythms)	Non-AF	7			

The samples of ECG signals of N, AF, and Non-AF rhythms are shown in Fig. 2. Figs. 2 (a) and (b) show the N and AF rhythm, and Fig. 2 (c) presents other

18 arrhythmias rhythm. All samples of ECG raw data is taken from 11 datasets, which shown the difference of whole samples due to varying length of recording and frequency sampling.

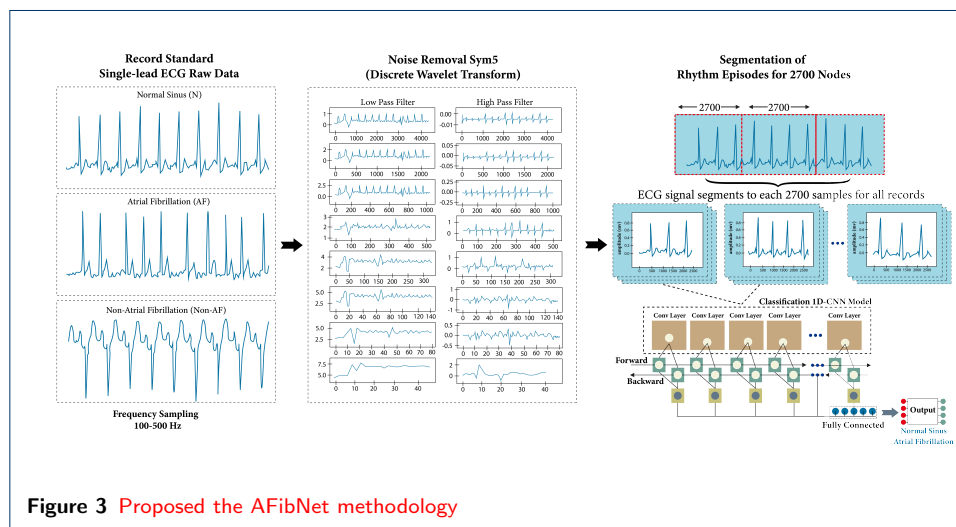


Implementation of Atrial Fibrillation Detection

In this study, the proposed classifier for two-class and three-class cases are based on 13 convolution and 5 max-pooling layers of 1D-CNNs architecture, which we have published in detail in a previous work [13]. However, in this study we improved the generalization and robustness of the proposed model by using input from several devices with different frequency samplings and lengths of the ECG signal waveform. In addition, it verified and tested in clinical settings with intra-patient and inter-patient scheme. Figure 3 shows the AFibNet methodology, which consisted of the following six main steps as follow;

- The large ECG signal data recording was used in this study, about 11,842 subjects for two-class classification (N and AF rhythms) and about 26,349 subjects for three-class classification (N, AF, and Non-AF rhythms) from 11 datasets for training, validating, and testing process. We use inter-patients mechanism in two-class classification case, where the training/validating dataset is different with testing dataset. All data are taken from single-lead ECG standard recordings with varying lengths of signal and frequency sampling (100–500 Hz).
- ECG noise removal using discrete wavelet transform (DWT). This step decompose the ECG signals into the specific wavelet levels (8 levels) with Sym5 [13]. The signal frequency is divided by two in DWT because it passes through the high pass and low pass filters. Frequencies that pass through the high pass filter will enter the detail coefficient, while the low pass filter will enter the approximation coefficient;
- All ECG signals are segmented into 2700 samples for one episode. If the total nodes are less than 2700 nodes, we add zero-padding technique that consists of extending a signal with zeros. An AF rhythm may contract at up to 600 beats per minute (bpm), thereby creating a high irregularity of R-R intervals and a sudden disappearance of regularly occurring P-waves [48][40]. Therefore, at least three to four heartbeats are needed to represent the AF episodes [40]. To assess the R-R interval in all ECG records, we have considered the minimum and maximum lengths for ECG signal segmentation based on the training datasets mentioned earlier. The ECG segmentation of 2700 nodes contained at least two R-R intervals or three beats with different frequency samplings (250 Hz, 300 Hz, and 500 Hz) in all records. In addition, with a minimum frequency sampling of 128 Hz for the testing set, the 2700 nodes segmentation could present more than two R-R intervals. Hence, 2700 nodes for ECG segmentation were selected as the best ECG episodes.
- Two features are generated from ECG signal irregularly irregular of heart rhythm and the maximum of amplitude as R-peak in one episodes of ECG signal, and it learn episode by episode. The feature is represented by ECG signal amplitude along 2700 nodes. The most important process of the 1D-CNNs method is that the common cause of AF is modeled by a series of filters in the convolution layer and sub sampling in the maxpooling layer. The feature output is used to synthesize the corresponding potential abnormal and normal rhythms. The feature reduce from 2700 nodes in layer-1 becomes 78 nodes in layer-13 with maxpooling-5, and the selected feature that use as input in fully connected layer to classify the normal and AF feature.

- Each ECG signal episodes of 2700 nodes was trained using the 1D-CNNs classifier model was proposed by Nurmaini et al. [13]. The structure model has 13 hidden layers with an activation function rectified linear unit (ReLU) in the hidden layers and tanh-sigmoid in the output layers [13]. The hyperparameters utilize a 0.0001 learning rate, 16 batch size, and 100 epochs. The training process for AF detection was fully supervised. It back-propagated the gradients from the fully connected layer through to the convolutional layers. As a loss function, we minimized the binary cross-entropy to optimize the model parameters, and we utilized the gradient descent with the Adam update rule.
- The 1D-CNNs model was proposed with several hardware platforms and software frameworks using both local (on-device) and remote (network-side server) computation (refer to Figure 1). The DL-based cloud system is designed to process the AF detection and to ensure that the proposed model works properly in real applications. Therefore, the computational complexity is deeply analyzed. Three parameters of the computational complexity as a cloud performances, namely processing time, throughput, and testing time, are validated using a computer with and without GPU. The memory consumption is one of the parameters to be considered, based on the selected classifier model. Each process in the convolution layer that is fully connected can be counted as memory consumption in our model and can be calculated from output shape from each layer parameter in the CNNs architecture.



Feature Learning in 1D-CNNs

1D-CNNs architecture has two distinct layer types, followed by CNNs-layer and then fully-connected (FC) layer. The feature learning was processed in CNNs-layer by using convolution and sub-sampling (pooling) process. The specific function of the two layers is for reducing the complexity and dimension of the ECG feature. In this study, we generate one by one episode (2700 nodes) as a feature along with ECG signal recording. The amplitude is represented by each node from node 1 to 2700. The CNNs-layers process and learn to extract features (feature learning) of the raw 1D data, which are used in the classification task performed by the FC-layers. As a

result, both feature extraction and classification operations are integrated into one process that can be streamlined to improve the performance of the classification. All feature learning process is explained detail in Table 3.

In the convolution process, several unique features are generating. For example, in convolution layer 1, was feed with 2700 nodes of the ECG signal. This layer has 64 kernels with a size of 3 x 1 and a stride of 1. This striding process is carried out along the ECG signal so that it can produce 3 features at the beginning, middle, and end of the signal episode. Then, the result of the convolution process is continued to the max-pooling layer. The pooling layer aims to summarize the features resulting from the convolution process so that it not only reduces the computation load but also can strengthen the model against variations in the input signal.

Table 3 Feature learning interpretation

Layer	Input Nodes	Filter Number	Kernel Size/Pool Size	Output Nodes	Feature Interpretation
Input	2700,1	-		-	ECG amplitude for one episode
Convolution 1	2700,1	64	3x1, stride 1	2698 × 64	64 feature map
Convolution 2	2698 × 64	64	3x1, stride 1	2696 × 64	64 feature map
Max-pooling 1	2696 × 64	-	2x1, stride 2	1348 × 64	Feature reduction (1348 nodes for one episode)
Convolution 3	1348 × 64	128	3x1, stride 1	1346 × 128	128 feature map
Convolution 4	1346 × 128	128	3x1, stride 1	1344 × 128	128 feature map
Max-pooling 2	1344 × 128	-	2x1, stride 2	672 × 128	Feature reduction (672 nodes for one episode)
Convolution 5	672 × 128	256	3x1, stride 1	670 × 256	256 feature map
Convolution 6	670 × 256	256	3x1, stride 1	668 × 256	256 feature map
Convolution 7	668 × 256	256	3x1, stride 1	666 × 256	256 feature map
Max-pooling 3	666 × 256	-	2x1, stride 2	333 × 256	Feature reduction (672 nodes for one episode)
Convolution 8	333 × 256	512	3x1, stride 1	331 × 512	512 feature map
Convolution 9	331 × 512	512	3x1, stride 1	329 × 512	512 feature map
Convolution 10	329 × 512	512	3x1, stride 1	327 × 512	512 feature map
Max-pooling 4	327 × 512	-	2x1, stride 2	163 × 512	Feature reduction (163 nodes for one episode)
Convolution 11	163 × 512	512	3x1, stride 1	161 × 512	512 feature map
Convolution 12	161 × 512	512	3x1, stride 1	159 × 512	512 feature map
Convolution 13	159 × 512	512	3x1, stride 1	157 × 512	512 feature map
Max-pooling 5	157 × 512	-	2x1, stride 2	78 × 512	Feature reduction (78 nodes for one episode)
Flatten	39936	-	-	-	Dot product between 78 nodes and 512 feature map
Dense	-	-	-	1000	Weight params
Dense	-	-	-	1000	Weight params
Output	-	-	-	1	Class

Result and Discussion

1D-CNNs Classifier Performances

As stated before, this study generated two-cases model: two and three-class case of AF classification. For each case, can be described as follows;

Test Case 1: N and AF Classification (two-class)

Based on the data distribution, 6072 and 2160 records for N and AF signals were used in the training and validation process. All ECG data (about 8,232 records), after segmentation at 2700 for each record, produced 54,038 rhythm episodes. In order to avoid overfitting before the 1D-CNNs model was generated, a k-fold (k=10) validation technique was used to tune the class weight with the resampling procedure for the total data bias [13]; the performances reported in the results are the average scores. All data are split as 90% for the training process and the remainder for the validation process and are resampled tenfold again. Table 4 shows the data distribution of the N and AF condition data in each fold's training and validation set.

Table 4 Data segmentation with a 10-fold scheme for a combination of three datasets (MIT-BIH Atrial Fibrillation, the 2017 PhysioNet/CinC Challenge, the China Physiological Signal Challenge 2018 databases).

Fold	Training Data		Validation Data		Total
	N	AF	N	AF	
1	16485	32149	1790	3614	54038
2	16391	32243	1884	3520	54038
3	16424	32210	1851	3553	54038
4	16402	32232	1873	3531	54038
5	16469	32165	1806	3598	54038
6	16520	32114	1755	3649	54038
7	16476	32158	1799	3605	54038
8	16453	32181	1822	3582	54038
9	16416	32219	1859	3544	54038
10	16439	32196	1836	3567	54038

Each fold has obtained the 1D-CNNs model performance based on five metrics: accuracy, sensitivity, specificity, F-score, and precision (refer to Table 4). Overall, the model has obtained good performance with up to 99.80% accuracy. However, among the 10-fold cross validations, the 4th, 8th, and 9th fold achieved 100% in all performance metrics. This means the best folds of 4, 8, and 9 were entirely successful in classifying N and AF. The average accuracy, sensitivity, specificity, F-score, and precision for the two classes (N and AF) in tenfold were 99.8%, 99.8%, 99.8%, 99.77%, and 99.74%, respectively.

Table 5 AFibNet performance with 10-fold cross validation for two-class

Fold	Classifier performances (%)				
	Accuracy	Sensitivity	Specificity	F1-score	Precision
1	98.22	98.24	98.24	97.98	97.74
2	99.94	99.94	99.94	99.93	99.93
3	99.98	99.98	99.98	99.97	99.97
4	100	100	100	100	100
5	99.96	99.97	99.97	99.95	99.94
6	99.98	99.98	99.98	99.97	99.97
7	99.94	99.94	99.94	99.93	99.93
8	100	100	100	100	100
9	100	100	100	100	100
10	99.98	99.98	99.98	99.97	99.97
Average	99.8	99.8	99.8	99.77	99.74

The optimum ECG sampling rate required for HR analysis to ensure acceptable accuracy of R-R intervals has not yet been determined [49][50]. Previous studies indicate that a low sampling rate may decrease the accuracy in detection of R-R points, thereby changing the HR parameters [49][50]. In the present study, the proposed 1-D CNNs model has been tested with various datasets that vary in frequency sampling and lengths of the ECG signal recordings. No duplication exists between the training and testing sets, because they were separated at the beginning of process. Our proposed model therefore overcomes this problem and the ECG signal is still recognized as the N or AF condition.

The performance of the cloud DL approach is listed in Table 6 with the interval of frequency sampling of the ECG devices from 100 Hz to 500 Hz. The proposed 1D-CNNs model has obtained perfect results for N and AF detection with 100% for accuracy, sensitivity, and specificity. The results show good performance without considering the frequency sampling.

Table 6 All performance of the AFibNet with several datasets

Dataset	Class	Number of subjects	Performance (%)		
			Accuracy	Sensitivity	Specificity
Training and Validation Data					
The 2017 PhysioNet/ CinC Challenge	N				
China Physiological Signal Challenge 2018	AF	8,232	99.8	99.8	99.8
MIT-BIH Atrial Fibrillation					
Unseen Data Testing					
ECG Long Term AF	AF	38	100	100	-
Paroxysmal AF	AF	48	100	100	-
MIT-BIH Arrhythmia	AF	6	100	100	-
AF Termination Challenge	AF	10	100	100	-
Fantasia	N	24	100	100	-
Indonesian Hospital (ECG 1)	N	42	100	100	100
Indonesian Hospital (ECG 2)	AF	3			
	AF	13	100	100	-
ECG recording from Chapman University and Shaoxing People's Hospital	N	1,646	98.86	98.88	98.88
All unseen data testing	F	1,780			
	N	1,712	98.94	98.97	98.97
	AF	1,898			

The methods of AF detection are mainly based on R-R intervals, short-term heart rate variability analysis, and sequential review to verify the presence of P-waves. In this work, the model has been tested using unseen data in order to detect any false positive (FP) and false negative (FN) predictions as a way to clarify the robustness of the technique. As shown in Table 6, when the data are increased (combination of all unseen data), the classification error from the proposed model produce 10 FN and 29 FP which impact the model performances. The performance result achieved of 98.94% accuracy and 98.97% for both sensitivity and specificity. The potential solution to this problem is to remove the noise level in the ECG signal with other filters to maximize the method's efficiency. In the future, the preprocessing step will be improved in terms of a filter fusion mechanism for noise removal from the ECG recordings.

Test Case 2: N, AF, and Non-AF Classification (three-class)

In the three-class classification, the data distribution produce imbalance class, due to 14,511 records of Non-AF rhythms. In an imbalanced class, a classifier tends to predict the majority of classes effectively. However, the minority class prediction levels are substantially reduced, reducing the model's reliability levels. Based on Table 7, by using the AFibNet model, even though the number of records is increased with imbalance class among N, AF and Non-AF rhythms, it still produces high performance in accuracy, sensitivity, specificity, precision, and F1-Score, which reveals

the ability of the classifier to predict the increase in the minority class. It can be seen from Table 7, by using our AFibNet model, it produces average performance with 96.36% accuracy, 93.65% sensitivity, and 96.92% specificity for three classes. It decreases only 3% accuracy from 11,842 subjects for two classes become 26,349 subjects for three classes.

Table 7 Two-class classification performance of the AFibNet with intra-patient mechanism

Fold	Performances (%)				
	Accuracy	Sensitivity	Specificity	Precision	F1-Score
1	76.29	57.02	79.10	53.19	54.12
2	96.37	94.90	97.28	91.83	93.24
3	98.02	96.64	98.46	95.66	96.14
4	99.08	98.41	99.27	97.97	98.19
5	99.29	98.88	99.46	98.24	98.55
6	98.88	98.13	99.14	97.36	97.73
7	99.34	98.89	99.49	98.41	98.64
8	98.22	97.10	98.46	96.59	96.83
9	99.18	98.48	99.34	98.08	98.28
10	98.91	98.01	99.13	97.39	97.69
Average	96.36	93.65	96.92	92.47	92.94

An in-depth investigation is carried out to ensure the robustness of the selected model from Table 7. For all classes produce 99% accuracy, and for the N class, a perfect sensitivity of 100% is achieved (refer to Table 8). The performance of all validations data produces consistent results for the N, AF, and non-AF conditions, even though the imbalance ratio for the data between N, F and Non-AF. It means our proposed model is ready to be implemented in a real AF detection system. The AFibNet model remains robust in several datasets, and it can be generalized and developed for binary or multi-class classification.

Table 8 AFibNet performance for each class

Performance (%)	N	AF	Non-AF
Accuracy	99.89	99.13	99.01
Sensitivity	100	97.92	98.77
Specificity	99.84	99.33	99.32

Validating Robustness in a Cloud Server

The convolution process generated a feature map which used as new input data for the next step. The 1D-CNNs model with only simple array operations learns 1D signals with a few hidden layers and neurons. After the nonlinearity process, all characteristics are produced only during each convolution process; this stage never occurs in the pooling process. This process allowed the model to create 64 unique features on the network's first layer. Due to its ability to avoid the vanishing gradient in the training process, we use ReLU as a nonlinearity function. The product of the layer of convolution is called the map of the function. We added the pooling layer after the second convolution layer. The purpose of this layer is to reduce the size of the feature map to lower the complexity. The max pooling layer is used since it can extract the essential features from the feature map. Two hidden layers in the fully

connected part are created, each with 1000 nodes, while the output layer defines a sigmoid function to classify the ECG data.

At present, the computing scene has become very diverse regarding computing platforms. A number of unique accelerators have been created, in addition to the wide variety of GPUs available for CNNs computations. The size ranges from small low-power systems to computing on the warehouse-scale [51]. Meanwhile, the CPU development [13] has continued and many CPUs offer acceleration for CNNs computations. The same diversity applies to runtime systems [43]. The computational specification and performance of CNNs for AF detection are not yet well understood. In order to calculate the computational complexity of a CNN, the original implementation of the CNNs algorithm is needed. In the present study, the Keras library is utilized to implement the CNNs algorithm based on parallel processing for the training process so that it is unable to present the exact complexity of the CNNs algorithm. However, the weight parameters for every layer are calculated to predict the computational consumption. Our proposed 1D-CNNs model has 13 convolution layers with 5 polling layers, and the consecutive layers produce about 45, 846, 329 weight parameters. All parameters are depicted in Table 9. However, the only operation with a significant cost is a sequence of 1D convolutions which are simply linear weighted sums of two 1D arrays. Such a linear operation during the forward and backward operations can effectively be executed in parallel. It means although the parameters are a lot, it does not increase the computation time and resources.

The 1D-CNNs model is analyzed to determine the speed of the processing time needed to predict the ECG signal from the raw data and arrive at a decision in the cloud system. The whole process is divided into four stages: read data, denoising, load model, and inference. The computational consumption mostly involves the load model and inference stages. While the number of weight parameters is high, the execution time is quite negligible. For each relation, only scalar weight multiplication and addition are performed.

This paper investigates the computational behavior and performance of AF detection from short-term ECG signals using 1D-CNNs. Table 10 lists the four computer specifications in the cloud in this work. **The test was conducted to predict** the AF condition in unknown data from short-term ECG signals using several datasets. Using the 4th computer specification (refer to Table 10) and utilizing the GPU memory, a prediction of an AF condition takes 0.02 seconds. This means that high specifications for the CPU and GPU result in faster processing in the cloud system.

The throughput time, inference time, and memory consumption are also calculated in this work. The throughput is the number of instances that can be transmitted in one second on the network. We would like to process a single instance in as many instances as possible in parallel to reach the optimum throughput. A good rule of thumb is to hit the memory limit of the GPU for the specified data form to find the best network. This size depends on the type of hardware and the network size. As shown in the results, the entire AF classification phase can still be processed with good performance, and the **1D-CNNs provide low computational complexities** at acceptably low cost with low power hardware.

Figure 4 illustrates the total time for the model to inference the input data. This process consists of three main processes: data reading, denoising, and inferencing.

Table 9 The number of parameters produce based on 1D-CNNs architecture to show the computational complexity.

Layer Name	Output shape	Parameters
Convolution 1	(None, 2698, 64)	256
Convolution 2	(None, 2696, 64)	12352
Maxpooling 1	(None, 1348, 64)	0
Convolution 3	(None, 1346, 128)	24704
Convolution 4	(None, 1344, 128)	49280
Maxpooling 2	(None, 672, 128)	0
Convolution 5	(None, 670, 256)	98560
Convolution 6	(None, 668, 256)	196864
Convolution 7	(None, 666, 256)	196864
Maxpooling 3	(None, 333, 256)	0
Convolution 8	(None, 331, 512)	393728
Convolution 9	(None, 329, 512)	786944
Convolution 10	(None, 327, 512)	786944
Maxpooling 4	(None, 163, 512)	0
Convolution 11	(None, 161, 512)	786944
Convolution 12	(None, 159, 512)	786944
Convolution 13	(None, 157, 512)	786944
Maxpooling 5	(None, 78, 512)	0
Flatten	(None, 39936)	0
Dense	(None, 1000)	39936000
Dense	(None, 1000)	1001000
Class	(None, 1)	1001
Total of parameters:		45, 846, 329

Table 10 The sample of CPU and GPU process as a cloud server

Specification	CPU	GPU	Testing (second)
1	CPU1: 4 Core, 8 thread, @2.8 GHz Memory: 16 Gb, Disk: 1000 Gb.	-	0.30
2	CPU1: 4 Core, 8 thread, @2.8 GHz Memory: 16 Gb, Disk: 1000 Gb	GPU1: GTX 1050 Ti, 4Gb	0.18
3	CPU2: 8 Core, 16 thread, @3.6 GHz Memory: 32 Gb, Disk: 1000 Gb	-	0.14
4	CPU2: 8 Core, 16 thread, @3.6 GHz Memory: 32 Gb, Disk: 1000 Gb	GPU2: RTX 2080 Ti, 11Gb	0.02

The processes of reading the data and denoising show no significant time differences among the four servers. However, when entering the inference step, servers equipped with GPUs have faster processing times compared to servers without GPUs. The time difference is quite striking due to the ability of the GPU to parallelize the process during the inference step. Overall, servers with CPU 2 + GPU 2 specifications have the fastest processing times compared to the others.

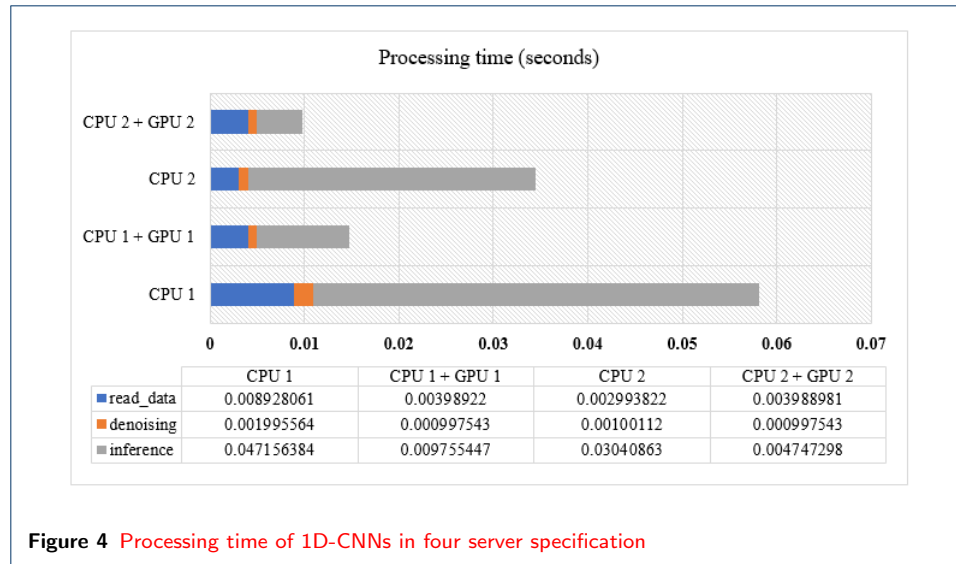
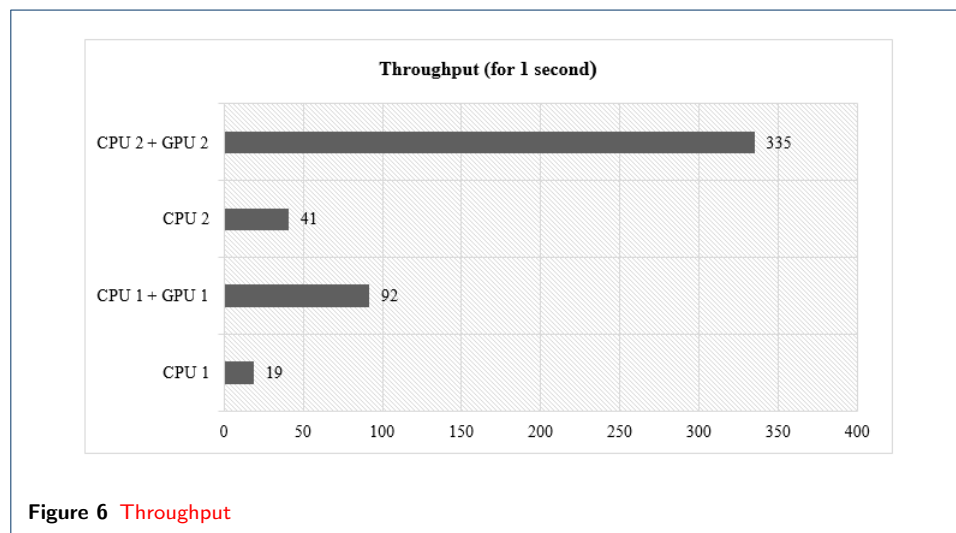
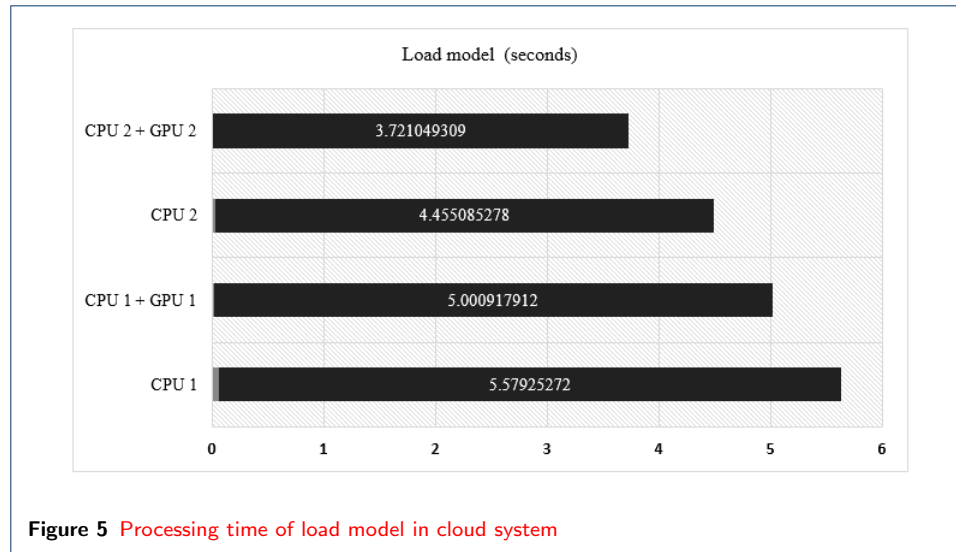


Figure 4 Processing time of 1D-CNNs in four server specification

Another aspect that is also quite important in analyzing the robustness of a cloud server is the processing time for loading the model. Although this process is only done once (when the model is deployed to the server), this step is also quite important because the size of the DL model is relatively large and the processing time also takes time. In this paper, the size of DL model is more than 500 Mb. As shown in Figure 5, the server with CPU 2 + GPU 2 has the fastest time for loading the deep learning model, at 3.7 seconds. This is because the server has the largest GPU memory compared to the others, so the process of model reading is faster.

The last aspect tested is the throughput time of the server. In this test, the reliability of the four server specifications in serving inference requests is assessed. The length of time used in testing the throughput time is one second. Figure 6 shows that servers with CPU 2 + GPU 2 have the largest number of services, at 335. This is directly proportional to the total inference time, which only takes 0.0079 seconds to predict input data (Figure 4). For single ECG signal prediction, the dominating delay is the 1D-CNNs model loading and neural network setup, with the actual inference being comparatively fast on all frameworks and with both models. With the advance of GPU technology, our DL model can approximate a very complicated learning function with a reasonable training time. 1D-CNNs can make predictions directly from raw data; hence the effectiveness of the learning process is increased when large datasets are available.



Benchmarking Over Other DL Algorithms with the Cloud System

This study achieved 100% accuracy for unseen data testing of two-class case with different frequency samplings and datasets (refer to Table 5). The proposed 1D-CNNs model obtained robust performance under several conditions. For clinical use, the AI-aided ECG AF diagnostic method we developed appears to be sufficiently accurate. For major general hospitals, it may help to minimize misdiagnosis, thereby saving labor costs. This study has also solved the ECG signal problem regarding unequal signal lengths, frequency sampling, and imbalanced data. This study has also compared the previous studies that used both limited and large ECG datasets.

Some previous studies have explored the performance of the cloud for AF detection based on deep learning approaches, such as autoencoders, CNNs, and LSTMs (refer to Table 11). For example, Faust et al. [4] detected episodes of AF using heart rate signals and RNNs with a LSTM model. The RNNs with the LSTM model provided the intelligence needed for state-of-the-art IoT-based diagnosis support systems. They trained and tested with labeled HR signal data from 20 subjects sourced from

PhysioNet Atrial Fibrillation Database (AFDB) and blindfolded validation, using the data from 3 subjects from AFDB and 82 subjects sourced from the Long-Term AF Database. Both performances of the dataset achieved 99.77% and 94% accuracy. Hong et al. [3] introduced their work on building, training, and serving an out-of-the-box cloud deep learning service they called CardioLearn for cardiac disease detection from ECGs. They used the ECG data with two forms of input: single lead and 12-lead. They tested CNN-RNN as the proposed approach on the 2018 China Physiological Signal Challenge dataset and achieved 98.57% and 97.89% receiver operating characteristics (ROC) and the area under the ROC (ROC-AUC) scores for single lead and 12-lead data. They also designed a portable smart hardware device, along with an interactive mobile program, to demonstrate its practical use. Zhang et al. [52] established the Cardiovascular Disease Whole Process Management Platform for automated detection and classification of ECG signals. They obtained 98.27% accuracy for recognition of 18 classes of heart rhythms based on a CNNs model. Their proposed model also achieved 99.95% sensitivity for AF detection and 85.49% accuracy and 88.52% sensitivity for normal cases. Yildirim et al. [53] proposed an effective deep neural networks (DNNs) to detect different rhythm classes from ECG databases. With the 1,780 AF and 1,825 normal cases, the class-based performance achieved an average 97.91% accuracy, 96.52% sensitivity, and 98.31% specificity from Lead II-inputs for AF and normal sinus detection.

In the present study, we have proposed a one-dimensional CNNs for AF detection. We have experimented the testing (unseen data) with and without ECG recordings from Chapman University and Shaoxing People's Hospital. Without the database, total records of 8,416 were achieved with 100% accuracy, sensitivity, and specificity. We then added more data to 11,842 subjects for two-class cases and obtained 98.94% accuracy, 98.97% sensitivity, and 98.97% specificity. When we have applied for three-class case, with total of 26,349 data, the performance achieved 96.36 accuracy, 93.65% sensitivity, and 96.92% specificity. Although the performance results were decreased, the proposed model was still reliable for AF detection.

Table 11 Benchmarking with other DL for AF detection

Authors	Method	Total Subjects	Acc. (%)	Sens. (%)	Spec. (%)	ROC-AUC Score (%)
Faust et al. [4]	RNNs-LSTM	102	98.51.00	-	-	-
Hong et al. [51]	CNNs-RNNs	±20,000	-	-	-	98.57.00
Zhang et al. [52]	CNNs	177,941	91.88	94.23.00	-	-
Yildirim et al. [53]	DNNs	3,605	97.91	96.52.00	98.31.00	-
Proposed model	1D-CNNs	8,416	100	100	100	-
		11,842	98.94	98.97	98.97	-
		26,349	96.36.00	93.65	96.92	-

*Accuracy : Acc, Sensitivity : Sens, Specificity : Spec

In summary, we demonstrate that an end-to-end approach using 1D-CNNs will classify AF from single-lead ECGs from a wide variety of separate instruments with a diagnostic efficiency close to that of cardiologists. **If verified in clinical settings, this methods** has the potential to enhance the precision, performance, and scalability of ECG interpretation. However, our generalization model of a 1D-CNNs also has some limitations, which can be summarized as follows:

- 1 **Our method is validated only for N, AF and Non-AF detection**, whereas a wide variety of different arrhythmias detected from single-lead ECGs need to be classified in the future and researched in depth to confirm a high diagnostic output close to that of cardiologists;
- 2 The proposed single learning method will be tailored to the target application prior to clinical application, which could entail additional pre- or post-processing steps;
- 3 Our DL-cloud architecture, which was not focused on the calculations of actual workloads and real computing platforms, was only available for neural network inference in terms of software frameworks and hardware acceleration.

Conclusion

AF has a high risk of severe health consequences, including death and stroke. Therefore, continuous AF monitoring could have a beneficial clinical impact by allowing the identification of AF in patients with post-ablation chronic AF or pharmacological cardioversion, for example. Our study is the first comprehensive demonstration of a DL approach to perform classification across a broad range of the most common and important ECG rhythm diagnoses with large datasets. We highlight the differences in the length of the ECG recording, the frequency sampling, and the data acquisition devices. This highlights the ability of our end-to-end 1D-CNNs-based approach to generalize the cloud deep-learning approach to a new set of AF rhythm labels on a number of datasets.

The approach exhibited rapid adoption that provides a chance for highly scalable AF detection. In the current study, we have trained and validated varied data with different frequency sampling. We also used unseen data from public and Indonesian hospital datasets to measure the robustness of proposed model. All ECG recordings were segmented into 2700 samples, which can present up to two R-R intervals. The 1D-CNNs model with 13 convolutions and 5 max-pooling layers reached the two-class classification performance of 99.80% accuracy, sensitivity, and specificity in the training and validation data. The unseen data from 3,610 records used as blindfold validation revealed that the model achieved 98.94% accuracy, 98.97% sensitivity, and 98.97% specificity. Whereas three-class classification performance produce, 96.36% accuracy, 93.65% sensitivity, and 96.92% specificity, respectively.

We also tested the scalability of the proposed model for different server specifications, such as a cloud server. The AFibNet was capable of generating an AF prediction quickly, indicating that our DL-based 1D-CNNs model has outstanding performance results. For functional diagnostic assistance, this concept is important since using information gained over a limited training period is precisely what a cardiologist does. In the future, the recommended model could be used to better classify AF patients early on, so that they can be managed to avoid stroke.

Acknowledgements

This work was supported by Basic Research Grants (096/SP2H/LT/DRPM/2019) from the Ministry of Research, Technology, and Higher Education, Indonesia and Competitive Grant 2020 from Universitas Sriwijaya Indonesia. We thank to the Intelligent Systems Research Group (ISysRG), Universitas Sriwijaya.

Funding

This work was supported by Basic Research Grants (096/SP2H/LT/DRPM/2019) from the Ministry of Research, Technology, and Higher Education, Indonesia and Competitive Grant 2020 from Universitas Sriwijaya Indonesia.

Availability of data and materials

All the data considered for this study is available at PhysioNet, <https://physionet.org/>

Ethics approval and consent to participate

Not applicable

Competing interests

The authors declare that they have no competing interests.

Consent for publication

Not applicable

Authors' contributions

B.T. Conceptualization, Conceived and designed the analysis, Data Curation, Investigation. S.N. Conceptualization, Wrote the manuscript, Performed the analysis, Funding acquisition, Formal Analysis, Methodology. A.E.T. Medical Validation. M.N.R. Designing computer programs, Formal Analysis, Methodology. A.D. Wrote the manuscript, Contributed data or analysis tools, Formal Analysis, Methodology, Data curation. R.E. Designing computer programs, Data curation. F.F. Resources, Data Curation. A.I.S. Visualization Preparation.

Author details

¹Intelligent System Research Group, Faculty of Computer Science, Universitas Sriwijaya, Palembang, 30139, Indonesia. ²Department of Cardiology Vascular Medicine, Dr.Mohammad Hoesin Hospital, Palembang, Indonesia.

References

- De Chazal, P., O'Dwyer, M., Reilly, R.B.: Automatic classification of heartbeats using ecg morphology and heartbeat interval features. *IEEE transactions on biomedical engineering* **51**(7), 1196–1206 (2004)
- Mant, J., Fitzmaurice, D.A., Hobbs, F.R., Jowett, S., Murray, E.T., Holder, R., Davies, M., Lip, G.Y.: Accuracy of diagnosing atrial fibrillation on electrocardiogram by primary care practitioners and interpretative diagnostic software: analysis of data from screening for atrial fibrillation in the elderly (safe) trial. *Bmj* **335**(7616), 380 (2007)
- Torres-Soto, J., Ashley, E.A.: Multi-task deep learning for cardiac rhythm detection in wearable devices. *NPJ digital medicine* **3**(1), 1–8 (2020)
- Faust, O., Kareem, M., Shenfield, A., Ali, A., Acharya, U.R.: Validating the robustness of an internet of things based atrial fibrillation detection system. *Pattern Recognition Letters* **133**, 55–61 (2020)
- Pranata, R., Yonas, E., Chintya, V., Tondas, A.E., Raharjo, S.B.: Evidence-based case report: The use of d-dimer assay to exclude left atrial thrombus in patient with atrial fibrillation, 48 hours. *Journal of atrial fibrillation* **11**(6) (2019)
- Pranata, R., Tondas, A.E., Yonas, E., Chintya, V., Yamin, M.: Efficacy and safety of catheter ablation for atrial fibrillation in congenital heart disease—a systematic review and meta-analysis. *Indian pacing and electrophysiology journal* **19**(6), 216–221 (2019)
- Yuniadi, Y., Hanafy, D.A., Rahardjo, S.B., Tondas, A.E., Maharani, E., Hermanto, D.Y., Munawar, M.: 2014 indonesian heart association guidelines of management of atrial fibrillation. *Indonesian Journal of Cardiology*, 102–33 (2014)
- Shah, A.P., Rubin, S.A.: Errors in the computerized electrocardiogram interpretation of cardiac rhythm. *Journal of electrocardiology* **40**(5), 385–390 (2007)
- Bowry, A.D., Lewey, J., Dugani, S.B., Choudhry, N.K.: The burden of cardiovascular disease in low-and middle-income countries: epidemiology and management. *Canadian Journal of Cardiology* **31**(9), 1151–1159 (2015)
- Ribeiro, A.H., Ribeiro, M.H., Paixão, G.M., Oliveira, D.M., Gomes, P.R., Canazart, J.A., Ferreira, M.P., Andersson, C.R., Macfarlane, P.W., Meira Jr, W., *et al.*: Automatic diagnosis of the 12-lead ecg using a deep neural network. *Nature communications* **11**(1), 1–9 (2020)
- Nurmaini, S., Umi Partan, R., Caesarendra, W., Dewi, T., Naufal Rahmatullah, M., Darmawahyuni, A., Bhayyu, V., Firdaus, F.: An automated ecg beat classification system using deep neural networks with an unsupervised feature extraction technique. *Applied Sciences* **9**(14), 2921 (2019)
- Tison, G.H., Sanchez, J.M., Ballinger, B., Singh, A., Olgin, J.E., Pletcher, M.J., Vittinghoff, E., Lee, E.S., Fan, S.M., Gladstone, R.A., *et al.*: Passive detection of atrial fibrillation using a commercially available smartwatch. *JAMA cardiology* **3**(5), 409–416 (2018)
- Nurmaini, S., Tondas, A.E., Darmawahyuni, A., Rachmatullah, M.N., Partan, R.U., Firdaus, F., Tutuko, B., Pratiwi, F., Juliano, A.H., Khoirani, R.: Robust detection of atrial fibrillation from short-term electrocardiogram using convolutional neural networks. *Future Generation Computer Systems* **113**, 304–317 (2020)
- Faust, O., Ciaccio, E.J., Acharya, U.R.: A review of atrial fibrillation detection methods as a service. *International journal of environmental research and public health* **17**(9), 3093 (2020)
- Ebrahimi, Z., Loni, M., Daneshlab, M., Gharehbaghi, A.: A review on deep learning methods for ecg arrhythmia classification. *Expert Systems with Applications: X*, 100033 (2020)

16. Andersen, R.S., Peimankar, A., Puthusserypady, S.: A deep learning approach for real-time detection of atrial fibrillation. *Expert Systems with Applications* **115**, 465–473 (2019)
17. Faust, O., Hagiwara, Y., Hong, T.J., Lih, O.S., Acharya, U.R.: Deep learning for healthcare applications based on physiological signals: A review. *Computer methods and programs in biomedicine* **161**, 1–13 (2018)
18. Darmawahyuni, A., Nurmaini, S., Yuwandini, M., Rachmatullah, M.N., Firdaus, F., Tutuko, B.: Congestive heart failure waveform classification based on short time-step analysis with recurrent network. *Informatics in Medicine Unlocked* **21**, 100441 (2020)
19. Farhadi, J., Attarodi, G., Dabanloo, N.J., Mohandespoor, M., Eslamizadeh, M.: Classification of atrial fibrillation using stacked auto encoders neural networks. In: 2018 Computing in Cardiology Conference (CinC), vol. 45, pp. 1–3 (2018). IEEE
20. Erdenebayar, U., Kim, H., Park, J.-U., Kang, D., Lee, K.-J.: Automatic prediction of atrial fibrillation based on convolutional neural network using a short-term normal electrocardiogram signal. *Journal of Korean medical science* **34**(7) (2019)
21. Cai, W., Chen, Y., Guo, J., Han, B., Shi, Y., Ji, L., Wang, J., Zhang, G., Luo, J.: Accurate detection of atrial fibrillation from 12-lead ecg using deep neural network. *Computers in biology and medicine* **116**, 103378 (2020)
22. Liaqat, S., Dashtipour, K., Zahid, A., Assaleh, K., Arshad, K., Ramzan, N.: Detection of atrial fibrillation using a machine learning approach. *Information* **11**(12), 549 (2020)
23. Zhou, X., Zhu, X., Nakamura, K., Noro, M.: Atrial fibrillation detection using convolutional neural networks. In: 2018 9th International Conference on Awareness Science and Technology (iCAST), pp. 84–89 (2018). IEEE
24. Huang, M.-L., Wu, Y.-S.: Classification of atrial fibrillation and normal sinus rhythm based on convolutional neural network. *Biomedical Engineering Letters*, 1–11 (2020)
25. Al Rahhal, M.M., Bazi, Y., Al Zuair, M., Othman, E., BenJdira, B.: Convolutional neural networks for electrocardiogram classification. *Journal of Medical and Biological Engineering* **38**(6), 1014–1025 (2018)
26. Kiranyaz, S., Ince, T., Gabbouj, M.: Real-time patient-specific ecg classification by 1-d convolutional neural networks. *IEEE Transactions on Biomedical Engineering* **63**(3), 664–675 (2015)
27. Acharya, U.R., Oh, S.L., Hagiwara, Y., Tan, J.H., Adam, M., Gertych, A., San Tan, R.: A deep convolutional neural network model to classify heartbeats. *Computers in biology and medicine* **89**, 389–396 (2017)
28. Hannun, A.Y., Rajpurkar, P., Haghpanahi, M., Tison, G.H., Bourn, C., Turakhia, M.P., Ng, A.Y.: Cardiologist-level arrhythmia detection and classification in ambulatory electrocardiograms using a deep neural network. *Nature medicine* **25**(1), 65–69 (2019)
29. Li, Y., Pang, Y., Wang, J., Li, X.: Patient-specific ecg classification by deeper cnn from generic to dedicated. *Neurocomputing* **314**, 336–346 (2018)
30. Oh, S.L., Ng, E.Y., San Tan, R., Acharya, U.R.: Automated beat-wise arrhythmia diagnosis using modified u-net on extended electrocardiographic recordings with heterogeneous arrhythmia types. *Computers in biology and medicine* **105**, 92–101 (2019)
31. Subasi, A., Qaisar, S.M.: Heartbeat classification using parametric and time–frequency methods
32. Li, F., Wu, J., Jia, M., Chen, Z., Pu, Y.: Automated heartbeat classification exploiting convolutional neural network with channel-wise attention. *IEEE Access* **7**, 122955–122963 (2019)
33. Yildirim, Ö., Pławiak, P., Tan, R.-S., Acharya, U.R.: Arrhythmia detection using deep convolutional neural network with long duration ecg signals. *Computers in biology and medicine* **102**, 411–420 (2018)
34. Shaker, A.M., Tantawi, M., Shedeed, H.A., Tolba, M.F.: Generalization of convolutional neural networks for ecg classification using generative adversarial networks. *IEEE Access* **8**, 35592–35605 (2020)
35. Hamon, R., Junklewitz, H., Sanchez, I.: Robustness and explainability of artificial intelligence. Publications Office of the European Union (2020)
36. Jagadeeswari, V., Subramaniaswamy, V., Logesh, R., Vijayakumar, V.: A study on medical internet of things and big data in personalized healthcare system. *Health information science and systems* **6**(1), 1–20 (2018)
37. Alkmmim, M.B., Figueira, R.M., Marcolino, M.S., Cardoso, C.S., Abreu, M.P.d., Cunha, L.R., Cunha, D.F.d., Antunes, A.P., Resende, A.G.d.A., Resende, E.S., *et al.*: Improving patient access to specialized health care: the telehealth network of minas gerais, brazil. *Bulletin of the World Health Organization* **90**, 373–378 (2012)
38. Draghici, A.E., Taylor, J.A.: The physiological basis and measurement of heart rate variability in humans. *Journal of Physiological Anthropology* **35**(1), 1–8 (2016)
39. Tondas, A.E., Halim, R.A., Guyanto, M.: Minimal or no touch electrocardiography recording and remote heart rhythm monitoring during covid-19 pandemic era. *Indonesian Journal of Cardiology* **41**(2), 133–41 (2020)
40. Moody, G.: A new method for detecting atrial fibrillation using rr intervals. *Computers in Cardiology*, 227–230 (1983)
41. Goldberger, A.L., Amaral, L.A., Glass, L., Hausdorff, J.M., Ivanov, P.C., Mark, R.G., Mietus, J.E., Moody, G.B., Peng, C.-K., Stanley, H.E.: Physiobank, physiotoolkit, and physionet: components of a new research resource for complex physiologic signals. *circulation* **101**(23), 215–220 (2000)
42. Liu, F., Liu, C., Zhao, L., Zhang, X., Wu, X., Xu, X., Liu, Y., Ma, C., Wei, S., He, Z., *et al.*: An open access database for evaluating the algorithms of electrocardiogram rhythm and morphology abnormality detection. *Journal of Medical Imaging and Health Informatics* **8**(7), 1368–1373 (2018)
43. Petrutiu, S., Sahakian, A.V., Swiryn, S.: Abrupt changes in fibrillatory wave characteristics at the termination of paroxysmal atrial fibrillation in humans. *Europace* **9**(7), 466–470 (2007)
44. Moody, G.: Spontaneous termination of atrial fibrillation: a challenge from physionet and computers in cardiology 2004. In: *Computers in Cardiology*, 2004, pp. 101–104 (2004). IEEE
45. Iyengar, N., Peng, C., Morin, R., Goldberger, A.L., Lipsitz, L.A.: Age-related alterations in the fractal scaling of cardiac interbeat interval dynamics. *American Journal of Physiology-Regulatory, Integrative and Comparative Physiology* **271**(4), 1078–1084 (1996)
46. Moody, G.B., Mark, R.G.: The impact of the mit-bih arrhythmia database. *IEEE Engineering in Medicine and Biology Magazine* **20**(3), 45–50 (2001)
47. Zheng, J., Zhang, J., Danioko, S., Yao, H., Guo, H., Rakovski, C.: A 12-lead electrocardiogram database for arrhythmia research covering more than 10,000 patients. *Scientific data* **7**(1), 1–8 (2020)

48. Ahmed, N., Zhu, Y.: Early detection of atrial fibrillation based on ecg signals. *Bioengineering* **7**(1), 16 (2020)
49. Mahdiani, S., Jeyhani, V., Peltokangas, M., Vehkaoja, A.: Is 50 hz high enough ecg sampling frequency for accurate hrv analysis? In: 2015 37th Annual International Conference of the IEEE Engineering in Medicine and Biology Society (EMBC), pp. 5948–5951 (2015). IEEE
50. Kwon, O., Jeong, J., Kim, H.B., Kwon, I.H., Park, S.Y., Kim, J.E., Choi, Y.: Electrocardiogram sampling frequency range acceptable for heart rate variability analysis. *Healthcare informatics research* **24**(3), 198 (2018)
51. Lim, K., Ranganathan, P., Chang, J., Patel, C., Mudge, T., Reinhardt, S.: Understanding and designing new server architectures for emerging warehouse-computing environments. *ACM SIGARCH Computer Architecture News* **36**(3), 315–326 (2008)
52. Hong, S., Fu, Z., Zhou, R., Yu, J., Li, Y., Wang, K., Cheng, G.: Cardiolearn: A cloud deep learning service for cardiac disease detection from electrocardiogram. In: Companion Proceedings of the Web Conference 2020, pp. 148–152 (2020)
53. Zhang, X., Gu, K., Miao, S., Zhang, X., Yin, Y., Wan, C., Yu, Y., Hu, J., Wang, Z., Shan, T., *et al.*: Automated detection of cardiovascular disease by electrocardiogram signal analysis: a deep learning system. *Cardiovascular Diagnosis and Therapy* **10**(2), 227 (2020)

6. Accepted paper in BMC Medical Informatics and Decision Making (30-006-2021)



Bambang Tutuko <bambangtutuko60@gmail.com>

BMC Medical Informatics and Decision Making: Decision on "AFibNet: An Implementation of Atrial Fibrillation Detection with Convolutional Neural Network"

1 message

BMC Medical Informatics and Decision Making <do-not-reply@springernature.com>

Wed, Jun 30, 2021 at 6:11 AM

To: bambangtutuko60@gmail.com

Dear Dr Tutuko,

Re: "AFibNet: An Implementation of Atrial Fibrillation Detection with Convolutional Neural Network"

We are delighted to let you know that the above submission, which you co-authored, has been accepted for publication in BMC Medical Informatics and Decision Making.

Please contact the corresponding author if you would like further details on this decision, including any reviewer feedback.

Thank you for choosing BMC Medical Informatics and Decision Making and we look forward to publishing your article.

Kind regards,

Peer Review Advisors

BMC Medical Informatics and Decision Making