

# Impact of Sustainable Agricultural Cultivation System Policy on Food Security and Welfare of Rice Farmers in South Sumatra Province, Indonesia

<sup>1</sup>Yamin, M., <sup>2</sup>Putri N. Ellysa, <sup>3</sup>Damayanthi, D.

<sup>1</sup>*Agribusiness Study Program, Social Economic Department, Agriculture Faculty, Universitas Sriwijaya, South Sumatra, Indonesia*

\*Corresponding author: yamin@unsri.ac.id

## Abstract

Ensuring Food Security has become an issue for a critical country at various levels of economic development, but the agricultural sector plays a strategic role in improving food availability. Sustainable food production and environmental protection should be government policy. This research aims to analyze the impact of the sustainable agricultural cultivation system (SACS) policy on food security and the welfare of rice farmers. The area of the research, Tanjung Lago District, of South Sumatra province, were selected purposively. The research method used is the survey method, and the sample withdrawal method is a sample random method with 30 farmers in 2021. The results showed that with the implementation of SACS, land productivity increased to 6,5 tons/ha, previously 4,5 tons/ha. Therefore, the farmers' income also increased, amounting to Rp1,647,464.00/ha. Food availability increased the impact of production, and the rice stock was steadier than before. Better food affordability due to distribution, stabilization of supply and price, stock management, access to markets and information are raising the usability of food, including improving consumption patterns and food safety and quality more steadily. The welfare of farmers is feeling prosperous because of the SACS. So, SACS could improve food security and farmers' welfare.

**Keywords:** agriculture, food security, sustainable, welfare

## 1. Introduction

El Niño and La Nina as implications of climate change can have a negative impact on agriculture production (Li et al., 2020). These two extreme climatic conditions have at least caused a drastic decline in rice productivity in Indonesia by -0.50% and -0.65% respectively for 40 years from 1970-2010 (Khairullah et al., 2021). In addition to quantity, changes in the price and quality of agricultural commodities are indicators that show that climate change significantly impacts on agricultural production (Anderson et al., 2020; FAO, 2015; Tang, 2019). Extreme climate change also causes the emergence of pests and diseases that attack crops and have an impact on decreasing agricultural production (Castex et al., 2018; Gomez-Zavaglia & Mejuto, 2020; Hatfield et al., 2020; Tjaden et al., 2018). Climate change is becoming an unavoidable natural phenomenon. If allowed to continue, it will indirectly become a threat to food security and farmers' welfare (Lenderking L. et al., 2021).

Nevertheless, food security has a strong relationship to the economic growth of a region. At least 76.92% of 26 empirical studies conducted throughout 2004-2021 show that food security and economic growth have a positive relationship (Fernandes & Samputra, 2022). This opinion is also reinforced by research results from (Ceasay & Ndiaye, 2022) which states that food security is correlated with economic growth. Adequate food security is a basic human need, being a source of human nutrition and energy to carry out daily activities (Fanzo et al., 2018). Meeting sufficient food needs can participate in encouraging one's behavior in carrying out economic activities. Moreover,

the background of Indonesian people who are mostly farmers, there needs to be a special policy made by the government and oriented towards food security and farmers' welfare.

In several Southeast Asian countries such as Malaysia, the establishment and implementation of specific policies in the agricultural sector is carried out as a form of climate change mitigation and adaptation (Tang, 2019). Other studies show that sustainable agricultural policies that focus on increasing agricultural production and technology are positively able to increase agricultural productivity and farmer welfare (Shikur, 2020). Other sustainable agricultural policies at the local/regional level that focus on improving infrastructure and providing clean water have proven to be able to contribute to food security and economic growth (Chemin et al., 2019). On the other hand, the state also has an obligation to ensure food availability and achieve food welfare for the community (Mukadar et al., 2019).

In Indonesia itself, sustainable agriculture cultivation system (SACS) policy is present as an effort to realize food sovereignty and security. Tanjung Lago is one of the regions in South Sumatra that has implemented this policy since 2015. Tanjung Lago is one of the regions in South Sumatra which has an area of tidal rice fields reaching 15.59 Hectare. Tidal land can be used as an effort to support the success of SACS through various technological innovations. The forms of realization of the sustainable agriculture cultivation policy that have been carried out include the following: 1) Improvement of irrigation technic; 2) assistance with driving equipment in the form of a water pump machine; 3) seed feeding and the fertilizers; 4) The placement of extension workers who are ready to assist farmers in overcoming various problems faced. According to the problem description above, thus this paper presents a comprehensive review of how sustainable agriculture cultivation systems can fill the gap between the threat of climate change to food security and the welfare of farmers which is one of the pillars of regional economic development.

## 2. Materials and methods

### 2.1 Research Study and Site Sampling Location

The study was conducted in Tanjung Lago District, South Sumatra Province, which is located between latitude  $2^{\circ}39'6.17''\text{S}$  and longitude  $104^{\circ}42'9.79''\text{E}$  was deliberately chosen as the research location because it has a large tidal rice field area and is one of the food granary locations in South Sumatra. For more details, the research location and site study can be seen in Figure 1. as follows:

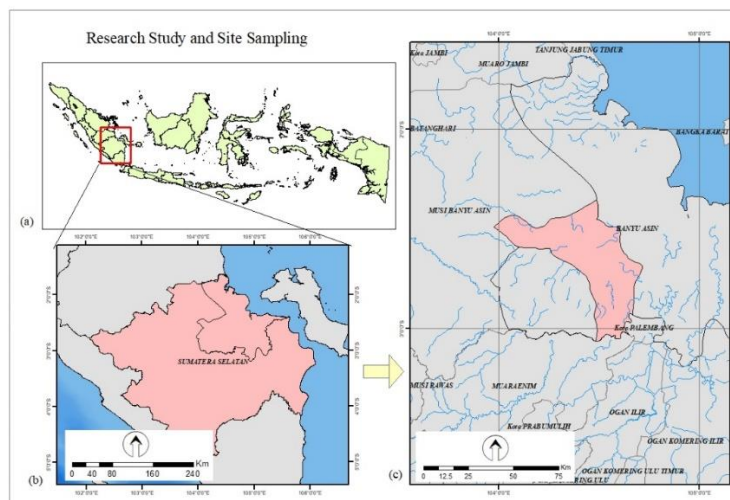


Figure 1. Study Area. a) Indonesia Map; b) South Sumatra Map; c) Tanjung Lago District

## 2.2 Research Method

The research was conducted directly through an interview method of 30 farmers who were randomly selected simply and using the *Slovin* formula with 15 percent of error from a total of 105 farmers who had implemented sustainable agricultural cultivation policies. The data collection method used in this study is the survey method, in order to obtain opinions or opinions from farmers through direct interaction with the observed objects. All variables in the questionnaire are valid and reliable. The data processing method is carried out using descriptive statistical analysis and multiple linear regression formulated with the following model:

$$LS_i = (\alpha_1 Hea_i) + (\alpha_2 Eco_i) + (\alpha_3 Job_i) + (\alpha_4 Fam_i) + (\alpha_5 Fri_i) + (\alpha_6 Per_i) + \mu_i$$

### Descriptions

<i>LS<sub>i</sub></i>	: A person's life satisfaction <i>i</i> , on a scale of 5 to 100
<i>Hea</i>	: A person's health satisfaction <i>i</i> , on a scale of 5 to 100
<i>Eco</i>	: A person's economic satisfaction <i>i</i> , on a scale of 5 to 100
<i>Job</i>	: A person's job satisfaction <i>i</i> , on a scale of 5 to 100
<i>Fam</i>	: Relationship satisfaction with one's family <i>i</i> , on a scale of 5 to 100
<i>Fri</i>	: Relationship satisfaction of one's friendship <i>i</i> , on a scale of 5 to 100
<i>Per</i>	: Personal Satisfaction of a person <i>i</i> , on a scale of 5 to 100
$\mu$	: Error Rate <i>i</i> ,
$\alpha, \sigma$	: Parameters to be estimated
<i>i</i>	: Research Location

## 3. Results and discussion/Results

### 3.1 Socio-Demographic Profile of Rice Farmers

Rice farmers' socio-economic factors are known to affect the impact of sustainable agricultural cultivation system policy on food security and welfare, namely gender, age, farming experience, education, farm size and household size. In accordance with previous research (Chiputwa & Qaim, 2016; Rachmah et al., 2020; Satama et al., 2022) Several variables above can explain the socio-demographic of farmers. Table 1. Shows that based on the gender category, all respondents are men who have a dominant role in running the sustainable agriculture cultivation system policy. In contrast to research conducted by (Satama et al., 2022) which shows that women actually have a more dominant role, especially in decision making, knowledge and adoption of sustainable measures. Based on the age category, farmers can be classified into productive age categories (Issahaku et al., 2020) and have had long independent farming experience, which is an average of 22 years. Age maturity and experience of farming independently will influence the attitude of individuals towards agriculture and the environment (Euriga, 2008). The more mature the age and the longer the experience of farming, the more concerned a person will be about agricultural activities and the environment (Mulyaningsih et al., n.d., 2018). Based on the education categories, most farmers get access to education until junior high school. (Van Thanh & Yapwattanaphun, 2015) in their research mentioned that the higher a person's level of education, the more they understand that the natural environment will affect human survival. Based on the category of land area, most farmers can be classified as large farmers (Assan, 2019) because they have an average land area of more than 1 hectare. Finally, based on age categories, most farmers have a fairly large number of family members, which is an average of 4 people. One of the advantages of having large family members is that farmers can involve family members in farming activities carried out (Oyewole et al., 2022). For more details the data can be seen in Table 1. belows:

Table 1. Socio-Demographic Farmers' Profile

Characteristic	Categories	Percentage (%)	Average $\pm$ Std. Deviation
Gender	Male	<b>100</b>	-
	Female	0	
Age (Year)	26 – 35 (Early Adult)	26.67	41 $\pm$ 7.73
	36 – 45 (Late Adult)	<b>46.67</b>	
	46 – 45 (Early Elderly)	20.00	
	56 – 65 (Late Elderly)	6.67	
Farming Experience (Years)	1 – 9	16.67	22 $\pm$ 11.81
	10 – 19	16.67	
	20 – 29	<b>30.00</b>	
	30 – 39	26.67	
	>40	10.00	
Education (Years)	No Formal Education (0)	3.33	7.2 $\pm$ 2.25
	Elementary Level (6 Years)	<b>46.67</b>	
	Primary School (9 Years)	<b>46.67</b>	
	Secondary School (12 Years)	3.33	
Farm Size (Hectare)	1 – 2	<b>86.67</b>	2 $\pm$ 0.90
	3 – 4	13.33	
Household Size (Person)	1 – 3	26.67	4 $\pm$ 0.85
	4 – 6	<b>73.33</b>	

Source: Primary Data, 2021

### 3.2 The Impact of Sustainable Agricultural Cultivation System (SACS) Policy on Food Security

The sustainable agricultural cultivation system (SACS) policy studied in this study focuses on increasing the crop index and productivity of smallholder rice farmers through several policy realizations, along with the treat of climate change to the tidal land such as: 1) improved irrigation technic; 2) assistance with driving equipment in the form of a water pump machine; 3) seed feeding and fertilizers; and 4) the assistance of extension workers. The impact of the sustainable agriculture program policy on food security in Tanjung Lago District is analyzed by comparing the values of food security indicators. Several indicators of food security index that will be analyzed including food availability, food accessibility, and food utilization and stability. These indicators are measured by comparing the conditions before and after the sustainable agricultural cultivation system policy is implemented. A brief description for more details can be seen in Table 2. as follows:

Table 2. Brief Description About the Impact of Sustainable Agriculture Cultivation System Policy on Food Security

Indicators	Pillars of Food Security	The Implementation of Sustainable Agriculture Cultivation System (SACS) Policy	
		Before the Implementation	After the Implementation
Availability (FAO, 2008)	Food Production	<ul style="list-style-type: none"> <li>Food production of rice plants will produce 5-6 tons / hectare and the average production reaches 9,566.67 tons.</li> </ul>	<ul style="list-style-type: none"> <li>Food production of rice crops will produce 6-7 tons / hectare and the average production reaches 10,000 tons.</li> </ul>

	Food Stock	<ul style="list-style-type: none"> <li>• Generally, farmers will set aside as much as 500 kg of the harvest for family food reserves.</li> </ul>	
Accessibility (FAO, 2008)	Distribution	<ul style="list-style-type: none"> <li>• Farmers → Midleman → Factory (PT. Buyung) → End Consumers</li> </ul>	<ul style="list-style-type: none"> <li>• Farmers → Midleman → Factory (PT. Buyung) → End Consumers</li> </ul>
	Supply and Price Stabilization	<ul style="list-style-type: none"> <li>• Unstable supplier and price.</li> </ul>	<ul style="list-style-type: none"> <li>• Unstable supplier and price.</li> </ul>
	Stock Management	<ul style="list-style-type: none"> <li>• Stock management is quite good.</li> </ul>	<ul style="list-style-type: none"> <li>• Stock management is quite good.</li> </ul>
	Access to the Market and Information	<ul style="list-style-type: none"> <li>• Access to markets is within easy reach; Access to information is sufficient.</li> </ul>	<ul style="list-style-type: none"> <li>• People's purchasing power is fixed; Access to markets is within easy reach; Access to information is sufficient.</li> </ul>
Utilization and Stability (FAO, 2008)	Consumption Patterns Improvement	<ul style="list-style-type: none"> <li>• Fixed Consumption</li> </ul>	<ul style="list-style-type: none"> <li>• Fixed Consumption</li> </ul>
	Food Safety and Quality	<ul style="list-style-type: none"> <li>• Food needs in quality and quantity have been fulfilled.</li> </ul>	<ul style="list-style-type: none"> <li>• Food needs in quality and quantity have been fulfilled.</li> </ul>

Source: Primary Data, 2021

Based on the availability indicators, Table 2. shows that the implementation of sustainable agricultural cultivation policies can be increase rice production by 20% and total production increase by 4.5%. It was happened because the implementation sustainable agricultural cultivation policies focus on improving agricultural production facilities, such as seed assistance, fertilizers and improving irrigation systems for rice fields. Thus, with the improvement of irrigation, farmers are able to carry out farming activities twice a year. This is also in line with the results of the research by (Materu et al., 2018) which states that one of realization of sustainable agricultural policies in the form of the application of irrigation techniques in rice farming can increase production by 1.5 tons /hectare/year while saving water by 33%. Nevertheless, it does not show a significant change in the amount of food stock by farmers. An increase in rice production will indirectly increase farmers' income. Generally, economic theory states that the higher the family income, the higher the quantity of food. This study shows is different from the research conducted by (Kansiime et al., 2021) which shows that income affects the quality of household food consumption, such as during the Covid-19 pandemic which caused a shock in household income and had an impact on increasing the proportion of food insecurity by 38% and 44% in Kenya and Uganda.

Based on the accessibility indicators, the implementation of sustainable agriculture policies has no influence on the marketing channels. Both before and after the implementation of the policy will go through three levels of marketing channels until it reaches the end consumer. This is not in line with the results of research conducted by (Saleh & Endang S., 2023) which states that sustainable agriculture policies allow farmers to be able to produce superior commodities. While the superior commodities should have a bargaining position to be able to directly distribute agricultural products efficiently to consumers. A sufficient distribution and good marketing infrastructure is considered a

dissemination of agricultural change in sustainable agriculture (Adenle et al., 2019). However, in general, it can be concluded that sustainable agriculture policies can produce products that are commercial and their sales can be accessed by the wider community. Furthermore, from the price and supply stabilization point of view, farmers can get the benefit from inventory management, access and information access. This is in line with research conducted by (Khodijah et al., 2022) which states that the sustainable agriculture cultivation system policy allows farmers to be able to access the market information from extension workers.

Based on the utilization and stability indicator, Table 2 shows that there is no change in the consumption pattern of farming families and farmers' food adequacy. However, in terms of quantity, farmers' food sufficiency increased in line with the increase in rice production which originally could only be harvested once a year into twice a year. It shows that sustainable agricultural cultivation system (SACS) policies as an effort to mitigate food insecurity have been successful implemented.

### 3.3 The Impact of the Sustainable Agricultural Cultivation System (SACS) Policy on Rice Farmers Welfare

Subjective wellbeing is used as an farmers' welfare indicator to see various factors that affected, including satisfaction live, health, economics, work, family and friendship. Figure 2. shows that more than 50% of farmers respond positively to all indicators of farmers' welfare. It means that sustainable agricultural cultivation (SACS) policies generally can provide welfare to the farmers. Personal and friendship are the two variables that most impact the existence of sustainable agricultural cultivation policies. This policy allows farmers to continue to carry out rice farming activities by maintaining local wisdom of the Indonesian people such as mutual cooperation (*gotong royong*) in planting and harvesting season activities (Abidin et al., 2019). *Gotong royong* indirectly created an interaction between farmers both personally and in groups. More detail the data can be seen in Figure 2 as follows:

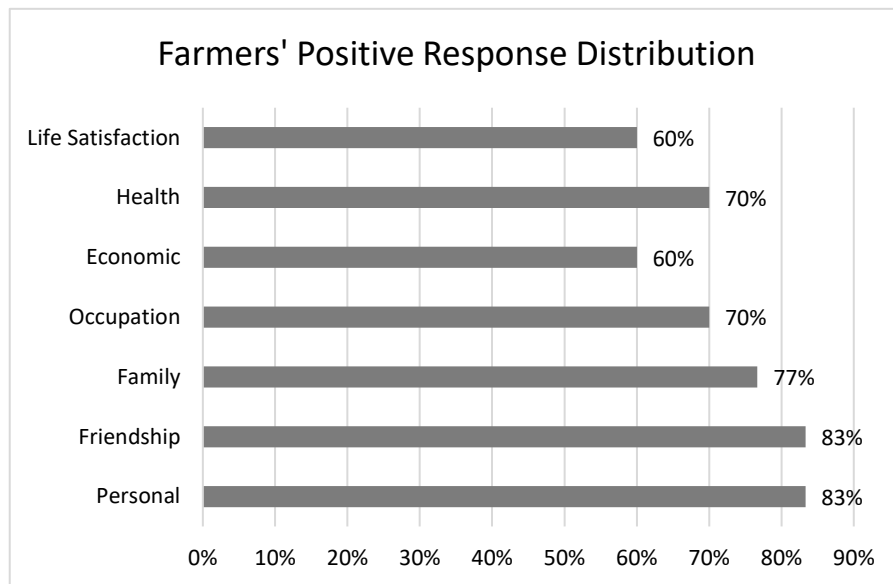


Figure 2. Farmers' Welfare Positive Response Based on Subjective Well Being

Furthermore, the impact of sustainable agricultural cultivation policies on farmers' welfare, seen through factors that affect life satisfaction, was analyzed through multiple regression models through the SPSS 24.0 program. Table 3 shows that the variables of health, work, family and friendship partially have a significant effect on the welfare of farmers with the SACS policy. The SACS policy facilitates

farmers with assistance such as: 1) Improvement of irrigation techniques; 2) assisted propulsion in the form of a water pump; 3) provision of seed feed as well as urea and fertilizer assistance; and 4) extension assistance. The existence of technical assistance, one of which is by providing agricultural equipment such as machines, can help reduce the level of work of farmers where usually worked on traditionally and require lighter and more efficient effort (Khodijah et al., 2022). This indirectly makes farmers feel prosperous in terms of health, family and work. This is also in line with the research conducted by which in research states that the purpose of implementing this SACS policy is to improve the standard of living and health of farmers. (Guth et al., 2022; Laia et al., n.d.; Musilah et al., 2021) also stated that technical efficiency through time, effort and costs emerged as a positive impact from the existence of the SACS policy. Furthermore, this SACS policy does not only provide technical assistance to farmers, but also non-technical assistance such as extension efforts. Extension activities are usually carried out massively to members of farmer groups. In extension activities, social capital acts as a tool that be able to create harmonious interactions both between extension agents and farmers and among the farmers themselves (Moghfeli et al., 2023; Prayitno et al., 2022). The interactions among clusters shaped a feedback and networks. This is the reason why with the SACS policy, friendship relations will also increase. For more details, the results of this study can be seen in Table 3. as follows:

Table 3. Regression Results Analysis of Factors Affecting Welfare of Rice Farmers in Tanjung Lago District

<b>Variables</b>	<b>B</b>	<b>Std.Error</b>	<b>t-count</b>	<b>Sig.</b>
Costant	4.681	8.274	0.566	0.577
<b>Health</b>	<b>0.388</b>	<b>0.128</b>	<b>3.034</b>	<b>0.006</b>
Economic	0.096	0.098	0.983	0.336
<b>Job</b>	<b>0.256</b>	<b>0.134</b>	<b>1.912</b>	<b>0.068</b>
<b>Family</b>	<b>0.536</b>	<b>0.120</b>	<b>4.481</b>	<b>0.000</b>
<b>Friendship</b>	<b>-0.411</b>	<b>0.173</b>	<b>2.381</b>	<b>0.026</b>
Personal	0.060	0.135	0.440	0.664
Adjusted R <sup>2</sup>	0.76			
F <sub>count</sub>	16.80			
Alpha	30%			
Significantly				

Source: Primary Data, 2021

#### 4. Conclusion

Food security and farmers' welfare are important issues that need attention because they are related to the economic development of a country. The existence of a sustainable agriculture cultivation system (SACS) policy comes as a mitigation effort to achieve food security and farmer welfare needs. The results of the study of the three food security indicators, namely availability, accessibility and utilization and stability, are proven that the SACS policy in Tanjung Lago District is able to meet the family food needs. Especially, in the availability of food productivity which has increased dramatically due to the assistance of various kinds of technical and non-technical assistance received by farmers. In line with this, another finding of this study shows that the implementation of the SACS policy can created farmers welfare which is generally indicator measured by economic satisfactions variables, but there are other variables such as health satisfactions, job satisfactions, family satisfactions and friendships satisfactions which are other

welfare indicator findings. Overall, the implementation of SACS policy in Tanjung Lago District has succeeded fill the enhancement food security and farmers' welfare needs.

### Conflict of interest

The authors declare no conflict of interest.

### References

- Abidin, Z., Leksono, A. S., Yanuwadi, B., & Purnomo, M. (2019). The Model of Organic Paddy Farming Practices by Revitalization the Values of Local Wisdom in Malang Regency. *IOP Conference Series: Earth and Environmental Science*, 239(1). <https://doi.org/10.1088/1755-1315/239/1/012040>
- Adenle, A. A., Wedig, K., & Azadi, H. (2019). Sustainable agriculture and food security in Africa: The role of innovative technologies and international organizations. *Technology in Society*, 58. <https://doi.org/10.1016/j.techsoc.2019.05.007>
- An Introduction to the Basic Concepts of Food Security*. (2008). [www.foodsec.org](http://www.foodsec.org)
- Anderson, R., Bayer, P. E., & Edwards, D. (2020). Climate change and the need for agricultural adaptation. *Current Opinion in Plant Biology*. <https://www.sciencedirect.com/science/article/pii/S1369526619301219>
- Assan, A. (2019). Strategi Bertahan Hidup Petani Guren di Desa Tukul Kecamatan Tering Kabupaten Kutai Barat. *EJournal Sosiatri-Sosiologi*, 2019(3), 54–67.
- Castex, V., Beniston, M., Calanca, P., & Fleury, D. (2018). Pest management under climate change: The importance of understanding tritrophic relations. *Science of the Total Environment*. <https://www.sciencedirect.com/science/article/pii/S0048969717330784>
- Ceesay, E. K., & Ndiaye, M. B. O. (2022). Climate change, food security and economic growth nexus in the Gambia: Evidence from an econometrics analysis. *Research in Globalization*. <https://www.sciencedirect.com/science/article/pii/S2590051X22000107>
- Chemin, M., Pelc, K., & Perez-Aleman, P. (2019). *Economic Growth and Food Security: Overlooked Opportunities at the Local, National, and International Level*. [mcgill.ca. https://www.mcgill.ca/isid/files/isid/chemin.pelc\\_perezaleman.pb3\\_.pdf](https://www.mcgill.ca/isid/files/isid/chemin.pelc_perezaleman.pb3_.pdf)
- Chiputwa, B., & Qaim, M. (2016). Sustainability Standards, Gender, and Nutrition among Smallholder Farmers in Uganda. *Journal of Development Studies*, 52(9), 1241–1257. <https://doi.org/10.1080/00220388.2016.1156090>
- Fanzo, J., Davis, C., McLaren, R., & Choufani, J. (2018). The effect of climate change across food systems: Implications for nutrition outcomes. *Global Food Security*. <https://www.sciencedirect.com/science/article/pii/S2211912418300063>
- FAO. (2015). *Climate change and food security: risks and responses*.
- Fernandes, M., & Samputra, P. L. (2022). Exploring linkages between food security and economic growth: a Systematic mapping literature review. *Slovak Journal of Food Sciences*.



<https://search.ebscohost.com/login.aspx?direct=true&profile=ehost&scope=site&authtype=crawler&jrnl=13389971&AN=161778113&h=XSIVla%2FWn7rwiuT5mJ8KBLbQ6%2BJDUEFXWZ6iK8QouwBwpxUELbtdrpC87ilvOgaxf4xosArYJLrUFQz1kejNVw%3D%3D&crl=c>

- Gomez-Zavaglia, A., & Mejuto, J. C. (2020). Mitigation of emerging implications of climate change on food production systems. *Food Research International*. <https://www.sciencedirect.com/science/article/pii/S0963996920302817>
- Guth, M., Stępień, S., Smędzik-Ambroży, K., & Matuszczak, A. (2022). Is small beautiful? Technical efficiency and environmental sustainability of small-scale family farms under the conditions of agricultural policy support. *Journal of Rural Studies*, 89, 235–247. <https://doi.org/10.1016/J.JRURSTUD.2021.11.026>
- Hatfield, J. L., Antle, J., Garrett, K. A., Izaurralde, R. C., Mader, T., Marshal, E., Nearing, M., Robertson, G. P., & Ziska, L. (2020). Indicators of climate change in agricultural systems. *Climatic Change*. <https://doi.org/10.1007/s10584-018-2222-2>
- Issahaku, H., Mahama, I., & Addy–Morton, R. (2020). Agricultural labour productivity and credit constraints: implications for consumption in rural Ghana. *African Journal of Economic ...* <https://doi.org/10.1108/AJEMS-03-2019-0124>
- Kansiime, M. K., Tambo, J. A., Mugambi, I., Bundi, M., Kara, A., & Owuor, C. (2021). COVID-19 implications on household income and food security in Kenya and Uganda: Findings from a rapid assessment. *World Development*, 137. <https://doi.org/10.1016/j.worlddev.2020.105199>
- Khairullah, I., Alwi, M., & Annisa, W. (2021). The fluctuation of rice production of tidal swampland on climate change condition (Case of South Kalimantan Province in Indonesia). *IOP Conference Series: Earth and Environmental Science*. <https://doi.org/10.1088/1755-1315/724/1/012009>
- Khodijah, Mukmin, H., & Yanti, F. (2022). Peningkatan Kesejahteraan Masyarakat Petani Melalui Program UPSUS PAJALE. *Jurnal Pengembangan Masyarakat Islam*, 15(1), 1–14. <http://ejournal.radenintan.ac.id/index.php/ijtimaiyya/index>
- Laia, A., Pertanian, F., & Abdurrachman Saleh Situbondo, U. (n.d.). *Efisiensi Penggunaan Alat Rice Transplanter pada Usaha Tani Padi Sawah di Desa Landangan Kecamatan Kapongan Kabupaten Situbondo*.
- Li, Y., Strapasson, A., & Rojas, O. (2020). Assessment of El Niño and La Niña impacts on China: Enhancing the early warning system on food and agriculture. *Weather and Climate Extremes*. <https://www.sciencedirect.com/science/article/pii/S2212094718301762>
- Lincoln Lenderking, H., Robinson, S., & Carlson, G. (2021). Climate change and food security in Caribbean small island developing states: challenges and strategies. *International Journal of Sustainable Development & World Ecology*, 28(3), 238–245. <https://doi.org/10.1080/13504509.2020.1804477>
- Materu, S., Shukla, S., Sishodia, R., Tarimo, A., & Tumbo, S. (2018). Water Use and Rice Productivity for Irrigation Management Alternatives in Tanzania. *Water*, 10(8), 1018. <https://doi.org/10.3390/w10081018>

- Moghfeli, Z., Ghorbani, M., Rezvani, M. R., Khorasani, M. A., Azadi, H., & Scheffran, J. (2023). Social capital and farmers' leadership in Iranian rural communities: application of social network analysis. *Journal of Environmental Planning and Management*, 66(5), 977–1001. <https://doi.org/10.1080/09640568.2021.2008329>
- Mukadar, A., Girsang, W., & Kakisina, L. Ot. (2019). *Kontribusi Program Upsus Pajale Terhadap Pendapatan Rumah tangga (Studi Kasus di Waihatu Kecamatan Kairatu Barat)* (Vol. 7, Issue 1).
- Mulyaningsih, A., Hubeis, A. V. S., Sadono, D., & Susanto, D. (2018). Partisipasi Petani pada Usahatani Padi, Jagung, dan Kedelai Perspektif Gender. *Jurnal Penyuluhan*, 14(1).
- Musilah, R. N., Putri, T. A., & Utami, A. D. (2021). Aktivitas dan Biaya Produksi Usahatani Padi pada Program UPSUS Pajale di Kabupaten Demak. *Forum Agribisnis*, 11(2), 153–166. <https://doi.org/10.29244/fagb.11.2.153-166>
- Oyewole, S. O., Afolami, C. A., Obayelu, A. E., & Adeofun, C. O. (2022). Effect of Sustainable Agricultural Practices On Production Efficiency of Maize Farmers In Oyo And Ogun States Of Nigeria. *The Journal of Developing Areas*, 56(4), 121–136. <https://doi.org/10.1353/jda.2022.0068>
- Prayitno, G., Hayat, A., Efendi, A., Tarno, H., Fikriyah, & Fauziah, S. H. (2022). Structural Model of Social Capital and Quality of Life of Farmers in Supporting Sustainable Agriculture (Evidence: Sedayulawas Village, Lamongan Regency-Indonesia). *Sustainability*, 14(19), 12487. <https://doi.org/10.3390/su141912487>
- Rachmah, M. A., Derwanto, D. H., & Mulyo, J. H. (2020). Farmers' Willingness to Pay for Bio-Slurry Fertilizer. *Agro Ekonomi*, 31(1). <https://doi.org/10.22146/ae.52815>
- Saleh, L., & Endang Sumiratin, dan. (2023). Faktor yang Mempengaruhi Keputusan Petani Memilih Padi Varietas INPARI 14 di Kelurahan Wawonggole Kecamatan Unahaa Kabupaten Konawe. *Jurnal Agri Sains*, 7(1). <http://ojs.umb-bungo.ac.id/index.php/JAS/index>
- Satama, M., Tapia, D. A. S., & Paul, C. (2022). Adoption of Sustainable Agricultural Practices During the Pandemic: The Case of Ecuadorian Family Farming Systems. *Journal of Agribusiness in Developing and Emerging Economies*. <https://doi.org/10.1108/jadee-04-2022-0067>
- Shikur, Z. H. (2020). Agricultural policies, agricultural production and rural households' welfare in Ethiopia. *Journal of Economic Structures*. <https://doi.org/10.1186/s40008-020-00228-y>
- Tang, K. H. D. (2019). Climate change in Malaysia: Trends, contributors, impacts, mitigation and adaptations. *Science of the Total Environment*. <https://www.sciencedirect.com/science/article/pii/S0048969718337732>
- Tjaden, N. B., Caminade, C., & Beierkuhnlein. (2018). Mosquito-borne diseases: advances in modelling climate-change impacts. *Trends in Parasitology*. <https://www.sciencedirect.com/science/article/pii/S1471492217302805>
- Van Thanh, N., & Yapwattanaphun, C. (2015). Banana Farmers' Adoption of Sustainable Agriculture Practices in the Vietnam Uplands: The Case of Quang Tri Province. *Agriculture and Agricultural Science Procedia*, 5, 67–74. <https://doi.org/10.1016/j.aaspro.2015.08.010>