

BUKTI KORESPONDENSI

ARTIKEL JURNAL INTERNASIONAL BEREPUTASI

Judul Artikel : The Continuity of Limas House of Pangeran Syarif Ali in South Sumatra from Dutch to Present


Jurnal : Yupa Historical, 2024, Volume 8 Nomor 2, Hal 298-321.

Penulis : Wargadalem, F. R., & Dewantara, B. P.

No	Perihal	Tanggal
1	Bukti Konfirmasi Submit artikel dan artikel yang di submit	16 Desember 2023
2	Bukti Accepted Submission	3 Maret 2024
3	Bukti Konfirmasi Terbit	26 Maret 2024

1. Bukti Konfirmasi Submit artikel dan artikel yang di submit

[yupa] Submission Acknowledgement External Inbox x

 **Muhammad Azmi** <ict@fkip.unmul.ac.id> Sat, Dec 16, 2023, 4:58 AM ☆ ↶ ⋮
to me ▾

Farida Wargadalem:

Thank you for submitting the manuscript, "The Journey of Rumah Limas Pangeran Syarif Ali South Sumatra" to Yupa: Historical Studies Journal. With the online journal management system that we are using, you will be able to track its progress through the editorial process by logging in to the journal web site:

Submission URL: <https://jurnal.fkip.unmul.ac.id/index.php/yupa/authorDashboard/submission/2905>
Username: faridarwd

If you have any questions, please contact me. Thank you for considering this journal as a venue for your work.

Muhammad Azmi

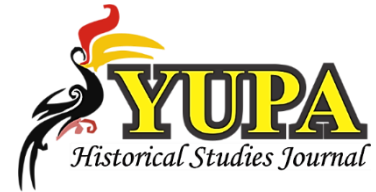
[Yupa: Historical Studies Journal](#)

P-ISSN: 2541-6960; E-ISSN: 2549-8754

Yupa: Historical Studies Journal

Vol. 0 No. 0, 0000 (00-00)

<http://jurnal.fkip.unmul.ac.id/index.php/yupa>



The Journey of Limas House Pangeran Syarif Ali South Sumatra

Bima Pranata Dewantara¹, Farida Ratu Wargadalem^{2*}

¹Sriwijaya University, Indralaya, Indonesia

²Sriwijaya University, Indralaya, Indonesia

*Correspondency Author

¹bimapranata1717@gmail.com, ²farida_wd@fkip.unsri.ac.id

Received	Accepted	Published
date	date	date

Abstract

Writing an article entitled The Limas House fractions of Ten Thousand: from a House to a Museum is based on an attempt to reveal the long journey of a historical building. The building is the Limas House, owned by a high-ranking official from the Palembang sultanate who is the sultan's son-in-law, Prince Syarif Ali. As a noble who was the leader of the Arab ethnic group at that time, it was very natural to have a large, sturdy and beautiful house. This house changed hands and locations six times until finally, and it is in its current position, namely the Limas House Museum. How does the process take place? That will be disclosed in this paper. The method used is the historical method, which consists of heuristics, source criticism, and historiography. The result is that the Limas House building is ancient. It was estimated to be built in the late 18th or early 19th century. After the Dutch occupation of the Palembang sultanate was abolished in 1825, the colonial rulers moved the houses of the nobility around the Kuto Besak Palace. That is why the Limas House was moved to a location not far from the Sekanak River. Various reasons caused this house to change ownership and location (Palembang, Batun, Pemulutan, behind the Gemeente office and KM 6 Palembang). In 1933 it was made into a museum under the name "Palembang Huis" until the presence of Japan. After independence, the museum was not taken care of according to the conditions until it was finally placed in its current location, part of the Balaputra Dewa Museum. The disclosure of the Limas House Museum will be significant if it is continued with further research on rare and precious objects that have been lost. If possible, it will be traced to the Netherlands as the owner of this museum at first.

Keywords: *The Limas House, Museum, South Sumatra*

Abstrak

Penulisan artikel berjudul *Rumah Limas Pecahan Sepuluh Ribu: dari Rumah menjadi Museum*, didasari upaya untuk mengungkapkan tentang perjalanan panjang sebuah bangunan bersejarah. Bangunan itu adalah Rumah *Limas* milik petinggi dari kesultanan Palembang yang merupakan menantu sultan, yaitu Pangeran Syarif Ali. Sebagai bangsawan yang menjadi pemimpin etnis Arab ketika itu, sangat wajar memiliki rumah yang besar, kokoh dan indah. Rumah ini berpindah tangan dan lokasi hingga enam kali, hingga akhirnya pada posisinya saat ini yaitu sebagai Museum Rumah *Limas*. Bagaimana proses itu berlangsung? Itu yang akan diungkapkan dalam tulisan ini. Metode yang digunakan adalah metode sejarah, yang terdiri dari heuristik, kritik sumber, dan historiografi. Hasilnya adalah bahwa bangunan Rumah *Limas* ini telah berusia sangat tua. Diperkirakan dibangun pada akhir abad 18 atau awal abad 19. Pascapendudukan Belanda atas kesultanan Palembang dan menghapuskannya tahun 1825, maka pihak kolonial mengenyahkan rumah-rumah golongan bangsawan di sekitar *Keraton Kuto Besak* yang mereka kuasai. Itulah sebabnya Rumah *Limas* ini dipindahkan ke lokasi tidak jauh dari Sungai Sekanak.

Berbagai alasan menyebabkan rumah ini berpindah kepemilikan dan lokasinya (Palembang, Batun, Pemulutan, belakang kantor Gemeente dan KM 6 Palembang). Pada tahun 1933 dijadikan museum dengan nama "Palembang Huis" hingga kehadiran Jepang. Setelah kemerdekaan museum tidak terurus, sesuai kondisi saat itu, hingga akhirnya ditempatkan di lokasi sekarang yaitu menjadi bagian dari Museum Balaputra Dewa. Pengungkapan museum Rumah *Limas* akan sangat bermakna jika dilanjutkan dengan meneliti lebih lanjut benda-benda langka yang sangat berharga yang telah hilang. Jika memungkinkan akan ditelusuri hingga negara Belanda sebagai pemilik museum ini pada mulanya.

Kata kunci : Rumah Limas, Museum, Sumatera Selatan

INTRODUCTION

Traditional houses are traditional buildings that show the characteristics of the people and culture of a region in Indonesia. This nation has many different cultures, both in terms of language and ethnicity. Until now, there are still tribes that maintain their traditional buildings to preserve their customs from outside cultures that enter Indonesia. Nowadays, traditional houses have become halls, restaurants, conference halls, museums, tourist attractions, and more. The shape and architecture of traditional houses in each region have their characteristics; these are adjusted to the surrounding environment and community habits. Traditional houses usually have various kinds of carvings on the background of the owner's house. Magnificent houses with many carvings generally come from descendants of aristocrats, community leaders or local traditional leaders. Their houses use selected wood, so they last a long time. Until now, quite a lot of traditional houses still stand firmly (Abdulghani, 2019). Traditional houses in Indonesia are generally shaped on stilts to protect from wild animals, floods and others. Closed traditional houses also protect the house's occupants from various kinds of weather. Thus, the construction of traditional houses has been carefully calculated and adapted to the surrounding nature (Wijaya, 2021).

South Sumatras also has a variety of traditional houses, which are scattered throughout the region. South Sumatra traditional houses are broadly distinguished between the Limas, Raft, Ulu, and Warehouse (Indies) houses. Of these houses, the Limas House is iconic; whose existence is not only in the capital city of Palembang but also spread in various regions in South Sumatra Province. Limas Houses are also known as Bari houses. Bari is also often pronounced Baghi by the indigenous people of Palembang and in the hamlets, which means old. Limas Houses are famous for their magnificent carving patterns. The carvings are painted using gold, which symbolizes the wealth and glory of the high culture of a nation. Limas Houses can be found in various corners of Palembang city, especially along the banks of the Musi River, an old residential area (Siswanto, 2020: 23, 25; Luciani, 2020).

The Limas Houses have an important meaning for the lives of the people of Palembang and South Sumatras because they have a unique shape. Every corner of this house has its meaning and significance. Its construction goes through a long process, from planning to implementation to finishing. After the planning is complete, it begins with a special ceremony that is complicated and detailed in its performance. Thus, the Limas House is full of various philosophies found in different corners of the house. All of these illustrate that the people of Palembang highly value their culture (Pratama, 2019).

The Limas houses have a decapitated roof that symbolizes that humans are God's creation; there are symbols and horns on the roof. *Simbar* symbolizes that Palembang people are independent people, while the horns describe the social level of the house owner. This traditional house consists of a multi-level floor called *Bengkilas*, which symbolizes caste or level based on age, especially when a traditional ceremony is held. The terrace has a fence called The *Tenggalon* fence. Its function is to "protect" the daughters of the house owner. The *Tenggalon* fence leads to the stairs at the front of the house, usually an odd number. The odd number is believed to bring good luck (Sary, 2015). The Limas houses scattered across Palembang (Seberang Ulu and Seberang Ilir) give the city its colour. However, of the many Limas houses, one house is used as a museum, and it is called Museum *Gemeente (Rumah Bari/Limas Museum)*. The Limas house belonged to Prince Syarif Ali, who was the leader of the Arab group at the time, as well as the son-in-law of Sultan Ahmad Najamuddin II. This important house changed hands several times until it was finally turned into a museum by the Dutch colonial government in the 20th century. Its existence remains as a museum on Srijaya Street, Kilometer 6, Palembang City. The Limas house is immortalized on the back of the ten thousand denomination banknote. At the same time, the front is the image of Sultan Mahmud Badaruddin II in the National Heroes series/emission 2005 (<https://www.bi.go.id/id/rupiah/gambar-uang/Detail-Uang.aspx?Bahan=Kertas&ID=30>, accessed 27 February 2023).

The presence of this museum is inseparable from the role of the European upper class, who liked to collect objects that were considered strange, interesting, beautiful, rare, and in demand by many people in the VI-XII centuries. Objects that have historical value or interesting stories behind them. They exhibited these rare objects in special cabinets. Along with the development of science, scientists also actively collect and exhibit objects of high value. Based on the exposure of the results of scientists' research on unique and high-value rare objects, it is as if these objects tell a story about "themselves". This fact encouraged the construction of museums. (Saragih, 2020).

The development of museums in Indonesia itself cannot be separated from the influence of Dutch colonization. The history of developing science and art in Indonesia is older than other Southeast Asian countries. The Dutch colonial party held activities related to these two things. For example, several VOC (*Vereenigde Oost Indische Compagnie*) leaders established an institution called *Bataviaasch Genootschap Van Kusten en Wetenschaapen* on April 24, 1778 in Batavia (Sutaarga, 1997/1998: 5). The establishment of the *Bataviaasch Genootschap Van Kusten en Wetenschaapen* triggered the emergence of other institutions including museums in each region. This became the basic capital for the further development of the museum. Thanks to these museums, various museums exist today in each region (Munandar et al., 2011).

The first museum in Palembang since the Dutch colonial era originated from the private house of Prince Syarif Ali to become a museum. The long journey of the Limas house until now is important to be revealed. For this reason, this paper will reveal "how the Limas House journey to become a museum until now" through historical narrative.

METHOD

This research uses historical methodology (Kuntowijoyo, 1995: 69-80). The historical method is used to examine and critically examine a historical event channelled in writing, commonly called historiography, which is based on the sources and facts collected. The historical method consists of selecting topics, collecting sources (primary, secondary), verifying the validity of the data (sources) that have been found, interpretation from the author, and finally, writing history (historiography). The use of the historical method aims to reveal the movement of Limas house from Palembang to Batun, Pemulutan, Palembang and several times in the capital city of Palembang until it became the Limas House Museum in 1982.

This research used archives, contemporary newspapers, literature studies, and documentation studies to collect sources. The archive used is the National Archives of the Republic of Indonesia (*ANRI*) Palembang Bundle No. 62.2. Newspaper sources consist of Java Gouvernement Gazette, May 30, 1812, and *Onze Overzeesche Gewesten*. Literature sources used in this research include *History of Indonesian Museum* by Munandar, *Title of Nobility about Palembang the Limas House* by Heryani, *South Sumatra State Museum Guidebook* by Saragih, *The Limas House and Lamban Ulu Ogan* by Samsudin, *Palembang Sultanate in the Vortex of Conflict (1804-1825)*, by Farida R. Wargadalem. As a complement to this research data, interview techniques were also used with sources related to the discussion of this research.

The interview technique is used in research to collect data or information related to the facts needed for the research. In this research, the author interviewed two sources, namely RM. Ali Hanafiah is a culturalist and descendant of the Palembang Darussalam Sultanate, and his Uncle is the head of the organization that takes care of the Bari House Museum. Yudhy Syarofie is a culturalist, and M. Alimasyur is a person who knows the Limas house in the Balaputra Dewa Museum. The author also used sources such as articles and journals related to the Bari House Museum in this research.

RESULT AND DISCUSSION

The Limas (Bari) houses are only owned by certain communities because building a the Limas house requires very large funds. The house fully uses a lot of high-quality wood material. Wood that meets the criteria is expensive (Aziz and Aziz, 2022: 171). As a result, the Limas houses were only owned by people in high strata with great wealth. The Limas house used as a museum belonged to a prince of Arab descent, namely Prince Syarif Ali (19th century) and Prince Syarif Abdurrahman Al-Habsyi.

Change of Ownership of The *Limas House (Bari)*

The first owner of the Limas house was Prince Syarif Ali. He was a famous scholar among the people of Palembang because he had a lot of Islamic knowledge. His authority made people respect

him. This figure was born in Palembang to a father named Al-Habib Sholeh and a mother named Syarif Nur Ibrahim Bin Zain Bin Yahya. Prince Sayarif Ali was a confidant of Sultan Ahmad Najamuddin II. As a confidant, he carried out many of the Sultan's duties, one of which was Sultan Najamuddin II ordering Prince Sharif to go to Kalimantan Island to carry out his mission. The task was completed well, making the Sultan impressed with his performance. This trust led him to become the son-in-law of Sultan Najamuddin II. As the son-in-law of the Sultan, this figure occupied several important positions, including the position of Treasurer of the Palembang Sultanate. When Palembang lost the war against the Dutch in 1821, the Dutch exiled Sultan Mahmud Badaruddin II to Ternate.

Prince Syarif Ali, who was the son-in-law of Sultan Najamuddin II, the enemy of Sultan Mahmud Badaruddin II (the sibling feud between Sultan Mahmud Badaruddin II and his younger brother Sultan Ahmad Najamuddin II, had been going on since Sultan Najamuddin was still Prince Adipati who betrayed Sultan Mahmud Badaruddin II in 1812 when the British attacked Palembang), was automatically not sentenced to exile. He became a high official in Palembang, also serving as the leader of the Arabs in the Palembang Sultanate. As the leader of the sayyids in Palembang, he was in charge of reducing the anger and resentment of the Palembang population in particular and the Palembang Sultanate in general, for the defeat of Palembang against the Dutch so that their leaders were banished to Batavia, and then to Ternate (1822). (Java Gouvernement Gazette, May 30, 1812; Wargadalem, 2017; Syukrin, 2016: 600-601).

Prince Syarif Ali was also a shipping entrepreneur (the Arab-owned shipping business was bigger than that of the Chinese. Their ships played an important role in the Palembang War, both against the British in 1812 and against the Dutch in 1819 and 182. See Berg 2010, Wargadalem 2017). As the Sultan's son-in-law and a businessman, he owned a the Limas house within the palace grounds. After the Dutch occupation, the colonial party carried out a "cleaning" of the houses belonging to the noble class in the Kuto Besak palace. One of them, Pangeran Syarif's house, was demolished and moved to a location not far from the Sekanak River. The position of the Limas house in Sekanak was also untenable, so it had to be sold. The buyer of the beautiful and representative house of its era was the *Pasirah* (*Pasirah/Depati* is a clan leader; a clan is a group of hamlets consisting of six to eleven autonomous hamlets). (ANRI, Palembang Bundle No. 62.2), Who was rich from the Batun clan (currently in Ogan Komering Ilir Regency). The change in ownership caused the Limas House to be moved to the Batun clan. It is unknown when the pasirah of the Batun clan bought it nor whether it was sold again. The sale of the traditional house was due to the Batun Pasirah being caught in a case of clan treasury embezzlement, so some of his property, including the Limas House, was sold.

Another source states that the Limas house once fell into the hands of Prince Abdurrahman Al-Habsyi. Prince Syarif Abdurrahman Al-Habsyi was the first Arab Kapiten in Palembang. The Dutch government gave Kapiten the position of mediate between the government and the ethnic Arab population. Problems that occurred between them could be resolved by the Kapiten, except for other matters concerning problems outside their group that could be resolved through the general court

(Anggraini, 2016: 53). Based on oral sources passed down from generation to generation; it is known that the buyer of the Limas house was a Prince named Punto who was also a pasirah from the Pemulutan area (now in the administrative area of Ogan Ilir). Thus, there have been many changes in ownership, which automatically change the location of the Limas traditional house. Prince Punto also faced a financial crisis and needed more wealth to cover the shortfall, so the only property left was the Limas house. The house again changed owners because it was sold. In this condition, the Dutch government bought the house, brought it back to the capital, Palembang, and rebuilt it behind the office of Gemeente Palembang or Water Toren (Palembang Mayor's Office now). (Berg, 2010; Samsudin, 2020: 41; interview with Yudhy Syarofie, August 4, 2022). Thus, it is a long and winding journey from the Limas house. If you pay attention to the location of the move of the Limas house, it is quite far. The proof is that the wooden stilt house was dismantled first, arranged, and raised by boat. Automatic requires several boats, given the large size of the house. Next, it is raised onto a boat and rowed against the current upstream (Batun). Once there, it was rebuilt exactly as before. This requires many carpenters who have qualified expertise in their field. Batun also experienced the same thing, which was dismantled, transported by boats, and rebuilt in the Pemouthan area. The demolition from there was just downstream, namely Palembang (a journey that is not too heavy because it follows the river flow), and there was also displacement three times in the capital. Changes in ownership and location, causing some parts of the course to be damaged, are a burden for the next owner, as well as losing the historical "evidence" of a very valuable building.

After Indonesia's independence, The Limas house automatically became the property of the Palembang City government and was used as a meeting place. An important event carried out by the government in 1971 at Rumah Liams/Bari was the discussion on "Determination of Palembang City Anniversary" by a team consisting of R.M. Akib, Rusdi Kosim, Makmun Abdullah, and representatives from Kodam II Sriwijaya. The results determined that Palembang City Anniversary fell on June 17, 683, based on the Kedukan Bukit Inscription by the 12th Mayor of Palembang RHA. Arifai Tjek Yan (1970-1978), Decree No. 57/UM/WK, dated May 6, 1972. After a long time there, it was moved to the Balaputra Dewa KM 6 Palembang Museum. (Samsudin, 2020: 43).

The Development of *Gemeente* Museum (*The Limas House Museum*)

The development of the Gemeente Museum that will be described consists of several periods, starting from the emergence of the museum (early development), the Japanese period, the Independence period, and the End of the Museum before being moved from behind the Water Toren Building to the South Sumatra State Museum.

The *Limas House* Becomes a Museum

The long journey of Prince Syarif Ali's Limas house until it fell into the hands of the Dutch government makes this house have a high historical value and is interesting. The Dutch government, aware of this, made the Limas house a museum. The house materials released from its last location were rebuilt behind the water tower (Ledeng office), which is now the Palembang Mayor's Office. It was

inaugurated on April 22, 1933, under the name Gemeente Museum Palembang. The Limas house changed ownership hands and location many times. The choice of the new house is inseparable from its beauty and uniqueness with a fairly large size and made of selected wood. Although it has been moved often over long distances, this traditional house is still strong and resilient. The phenomenal work of the nation's children (Samsudin, 2020: 41) can be seen in Figure 1 below.



Figure 1. Palembang Museum (Bari House Museum), 1935

Source : KITLV 12723, <http://hdl.handle.net/1887.1/item:915399>, Retrieved 07 February 2023.

The picture above shows a photo of the Limas/Bari House Museum that the Dutch named. If you look at the current form, it has mostly stayed the same. Uniquely in front of the museum are placed benches that comfort visitors. The existence of statues also adds to the attractiveness of the museum.

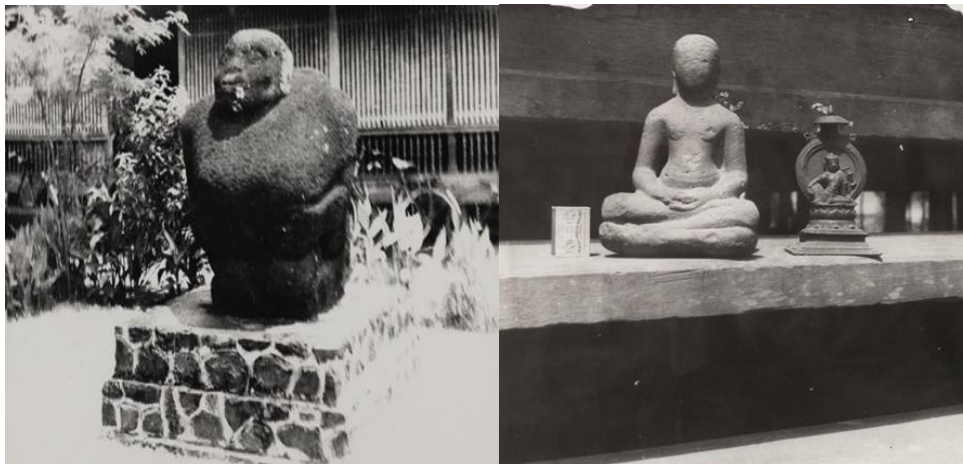
From *Palebangsch Huis* to Bari/Limas House Museum

Palebangsch Huis, owned by Gemeente Palembang, is open to the public, and inside, there are objects in the Dutch government's collection. These objects were obtained from the people of Palembang, who have hereditary heirlooms. (Onze Overzeesche Gewesten, 05 May 1933). This is reinforced by a statement delivered by Ali Hanafiah through an interview on August 10, 2022. According to him, the success of the Dutch government in realizing a museum in Palembang could not be separated from the participation of his great-grandfather, a member of the Palembang aristocratic class. At that time, the descendants of the highest noble class (Raden/Raden Ayu group) founded an organization called Priyayi Pon (the last chairman was Raden Haji Muhamad Akib, who was the source's uncle). This organization played an active role in collecting valuable objects belonging to the Dutch in Palembang. The Dutch will store and collect objects of high value. Meanwhile, the less valuable will be collected and made into museum collections. (Hanafiah interview, August 10, 2022). It should be suspected that the Dutch brought high-value objects from the South Sumatra and Bangka-Belitung regions, both in their name and that of the Dutch government here. Naturally, some time ago, in 2021, there was an attempt to restore the skull of a *depati* from South Sumatra. Until now, the follow-up is unknown.

The museum's collection is also filled with cultural products of South Sumatra. This is supported by writings stating that Dutch people have researched the Palembang Residency area. The

research results were contained in F. M. Schnitger's writing, "The Arcaeology of Hindoo Sumatra, " published in 1937. Schnitger is a conservator of Gemeente Museum Palembang. According to him, there are many statues in the former Sultanate of Palembang and other Sumatran regions. Statues and other historical objects were collected and placed in various Dutch East Indies museums, including the Gemeente Museum Palembang. In addition, the personal belongings of some Europeans/Dutch were also collected (Schnitger, 1937).

Here are some photos of the collection of the Limas House Museum, which contains various historical objects from the culture of the people of South Sumatra, such as megalithic relics from Pasemah and several statues that can be seen in Figure 3 and Figure 4.



Figures 3 and 4 of the collection of Rumah *Limas Museum* (1941-1953)

Source: KITLV 165309, <http://hdl.handle.net/1887.1/item:834665>, accessed February 07, 2023.

Figure 3 is taken from Lahat/Pagaralam in the form of the Pasemah megalithic, while picture number 4 is not yet known where the two stone and bronze statues came from.

The emergence of various museums in Indonesia is closely related to the existence of Europeans, especially the Dutch in Indonesia; these Europeans are interested in natural resources, flora, fauna, and culture owned by Indonesia. This interest, supported by high curiosity, led to many studies and research conducted in the archipelago. The existence of research conducted by Europeans has triggered the establishment of research agencies and museums in various regions (Auliahadi. 2022: 7). So, the Dutch rule since the early 20th century has tried to further encourage research and various studies related to culture and various archaeological remains in the territory of Indonesia, including in South Sumatra until leaving Indonesia in 1942 due to losing the war with Japan. Before leaving Palembang, only part of it was abandoned. Important and valuable objects were brought by the Dutch, who controlled Palembang. (Hanafiah interview, August 10, 2022).

The Japanese managed to capture Palembang City on February 14, 1942. During the three and a half years of their existence here, they focused more on controlling abundant Natural Resources (SDA), especially petroleum and plantation products, which can be used for war purposes. (Hanafiah, 1988: 17; Mita, 2019: 116). The positive impact of this condition made these colonists need to pay more

attention to the museum, so the collection was saved. They are more interested in art, tradition, and language. The Japanese government uses these three fields to launch its propaganda in Indonesia. (Munandar, et al: 2011).

After Indonesia's independence, the ownership of the Limas House Museum became the property of the Palembang City government. The naming of this museum became Bari House Museum. The Limas House Museum is the first museum since the Dutch era and the first museum for the city of Palembang. With this museum, it became the basis for the establishment of other museums in South Sumatra, especially after independence. Since then, the museum has kept its function the same, but still needs to be maintained. At that time, Indonesia had just tasted independence and was faced with a very dynamic condition of maintaining independence. This nation must fight to defend sovereignty with Aggression I and II, which makes the burden even heavier. The same thing happened in the capital, Palembang. The city had to bear the brunt of the Five Days and Five Nights Battle (January 1-5, 1947), which ended with signing an agreement that the fighters should retreat 20 kilometers from the city center—automatically made this city controlled by the Dutch. In such conditions, the museum becomes abandoned, as shown in Figure 4 below.



Figure 4. Bari House Museum While Still Behind Water *Toren* (Water Tower) Palembang, 1953

Source: KITLV 165314, <http://hdl.handle.net/1887.1/item:837226>, accessed February 07, 2023.

After the Physical Revolution ended in late 1949, the nation gained recognition of sovereignty from the Netherlands. In 1950, Indonesia enacted its constitutional system's Provisional Constitution of 1950 (UUDS 1950). It is not security and stability that is obtained; it causes complicated problems in the Indonesian political system (adhering to the Parliamentary Cabinet system). As a result, instability occurs (Afriansyah and Farida R. Wargadalem, 2020). This condition automatically affects Palembang, the center of government in South Sumatra. Many things are neglected, including the Dutch heritage museum the Limas House Museum.

Further management is handed over to the Sriwijaya Museum Foundation, and the aim is to help collect research objects that will be placed in the Bari/Limas House Museum. This museum still needed proper attention due to the conditions at that time. The management could have been more optimal due to existing human resources, so the museum's management could be more optimal (Alimansyur Interview, August 10, 2022). In 1973, the central government planned to create a cultural house and made it mandatory that every region in Indonesia participate in these activities. That is why the Bari House Museum is increasingly languishing; some of its collections were brought to Jakarta to fulfill the central government's wishes. (Heryani, 2006:18). Bari House Museum runs roughly. The officer who manages it is a government employee named Raden Abdul Wahab. With all his limitations, Abdul Wahab could only maintain a makeshift museum. As a result, this museum needs to run properly, which impacts the lack of visitors (Hanafiah Interview, August 10, 2022).

The Final of Rumah Baru/Limas House Museum

The Limas Museum was not managed professionally until the 1980s, and disaster came when the Regional Government Level II of Palembang City expanded the Mayor's office and built the office of the Regional Parliament Level II of Palembang City in 1982. The expansion penetrated the Bari House Museum area. To meet these needs, the Palembang City government dismantled the historical museum (Samsudin, 2020: 41). Ironically, the demolition was carried out haphazardly without involving archaeologists and historians. Handling is left entirely to the builder. Furthermore, the building logs were placed haphazardly next to the Sultan Mahmud Badarrudin II Museum, without protection from hot weather and rain. As a result, some parts of the house were damaged by the weather. In addition, some parts of the house are missing, such as carvings and parts of the floor of the house (Alimansyur Interview, August 2022).

The objects that became the Bari/Limas House Museum collection were moved to the Sultan Mahmud Badaruddin II Museum (this large building is a former Dutch office and resident's house). This building was used as a Japanese military headquarters during the Japanese occupation. After independence, it became the headquarters of the Indonesian National Army Kodam II / Sriwijaya. Furthermore, Kodam II handed it over to the Palembang City government, and it was made into a museum in 1984) (Palembang City Government 2008). Transfer and transfer of ownership of the collection objects of the Bari House museum without the slightest record so that the number, type, and condition of the cultural heritage objects are still being determined. Some valuable objects have begun to be lost and damaged due to lack of maintenance. The officials who carried out the removal did not need to gain knowledge of how to rescue cultural heritage objects. In addition, the government needs to understand how important it is to preserve cultural heritage objects. Moreover, preservation efforts require large costs. So, buildings and valuable objects in the Bari/Limas House Museum collection are damaged, lost, and not maintained. (Hanafiah interview, August 10, 2022).

With the abandonment of the Limas house building, several people have ideas to save the historic building. Furthermore, permission was obtained from the central government to rebuild the Limas House. The collection of parts of the Limas house took two years. After the parts of the house were collected, it turned out that the problem was not over, and the right location to rebuild it was needed. A beautiful coincidence: at the same time, the government of South Sumatra was building the South Sumatra State Museum. With the government's and related agencies' agreement, the Limas House will be placed in the South Sumatra State Museum area called the Balaputra Dewa Museum and be part of the museum's collection. (Alimansyur interview, August 10, 2022). It seems that the Pyramid House ended a long, winding journey. Currently, the Limas House Museum is an icon of Balaputra Dewa Museum.

CONCLUSION

The Limas house is an icon of Balaputra Dewa Museum because it has high historical value. This started from the house owned by officials from the Palembang Sultanate because the owner was Prince Syarif, the sultan's son-in-law. The location is around the Kuto Besak Palace, which had to be demolished by order of the Dutch ruler after the defeat of the Palembang sultanate against the Dutch.

The history of the Limas house repeatedly moved places, not only in Palembang but also out of the city (Batun and demo than) until finally returning to the capital. Seeing its very high value with a specific shape and size as a traditional house of this area, the colonial party made it a museum with the name Palembang Huis. After independence, it remained as a museum but with less terawatt. This nation faced the steam of maintaining independence while still struggling to fill it with unstable homeland politics.

The Bari/Limas House Museum was moved back to an unclear place when the Palembang City government expanded the office and established the Palembang City DPRD office, which had entered the Bari Museum land. Finally, this museum was rebuilt on the land of Balaputra Dewa Museum KM 6 Palembang until now. This building is very historic. Although it has moved six times, its "figure" as a very valuable and beautiful building can still be enjoyed today. It isn't easy to find the shape and size of such a house house, plus the historical and cultural value attached to the building.

Gemeente Museum (Palembang Huis), converted into The Bari/Limas House Museum after Indonesia's independence, is the first museum in South Sumatra. This museum became the forerunner of the establishment of other museums in South Sumatra, which functioned as a place to gain and develop science, research, and tourism. The Limas House Museum has contributed to maintaining the nation's identity so that the younger generation remains the nation on their ancestors and works.

ACKNOWLEDGEMENT (if needed)

Gratitude was conveyed to the Dean of FKIP Sriwijaya University, who had given permission and assisted in this research.

REFERENCES

- Abdulghani., Tarmin., Sati., Plasmana, B. (2019). Pengenalan Rumah Adat Sebagai Ekpresi Budaya Tradisional. *Dharmasisya*, 1(1), 517-529.
- Alimansyur, M. Personal Interview with Bima Pranata Dewantara. August, 10 2022
- Angraini, Y. (2016). Sejarah Perekonomian di Palembang: Studi Atas Produksi Es Balok dan Air Bersih PT. Alwi Assegaf 1929-1998. *Skripsi*. Universitas Negeri Islam Raden Fatah Palembang.
- Auliahadi, A.A., et al. (2011). Sejarah dan Perkembangan Museum Kerinci. *JAMBE: Jurnal Sejarah Peradaban Islam*, 3(2), 1-9.
- Aziz, I., & Aziz, A. M. A. (2022). Limas House Horizontal Proportion and Dulang Module: The Collectivism of Austronesian, Buddhism, Hinduism, Taoism, and Islam in Palembang History. *Journal of Islamic Architecture*, 7(2), 171-181.
- Bank Indonesia. "Detail Uang 10.000 Rupiah." Website Bank Indonesia. Retrieved February 27, 2023. (<https://www.bi.go.id/id/rupiah/gambar-uang/Detail-Uang.aspx?Bahan=Kertas&ID=30>)
- Berg, L.W.C.,van den. (2010) *Orang Arab di Nusantara*, Jakarta, Komunitas Bambu.
- Djohan, H. (1988). *82 Tahun Pemerintahan Palembang*. Palembang: Humas Kotamadya Daerah Tk. II Palembang
- Hanafiah, R.M.A. Personal Interview with Bima Pranata Dewantara. August, 10 2022
- Heryani, Y. (2006) *Gelar Kebangsaan Kaitannya Dengan Rumah Limas Palembang*. Palembang: Pemerintah Provinsi Sumatera Selatan Dinas Pendidikan Nasional Museum Sumatera Selatan.
- Java Gouvernement Gazette*, May, 30 1812
- Kuntowijoyo. (1995). *Pengantar Ilmu Sejarah*. Tiara Wacana Yogya: Yogyakarta.
- Luciani, Reta & Malihah, Elly. (2020). Local Wisdon Analysis of Rumah Limas in Sumatera Selatan. *Indonesia Journal of Sociology, Education, and Develoment*, 2 (1), 1-9.
- Mita, A. (2019). Palembang Shi pada Masa Pemerintahan Jepang 1942-1945. *Lembaran Sejarah*, 15(2), 103-120.
- Munandar, A.A., et al. (2011). *Sejarah Permuseuman Di Indonesia*. Jakarta: Direktorat Jendral Sejarah dan Purbakala Kementerian Pariwisata dan Ekonomi Keratif.
- National Archives of the Republic of Indonesia (ANRI) Palembang Bundle No. 62.2.
- Onze Overzeesche Gewesten*, May, 5 1933
- Pratama, Y. (2019). Rumah Limas: Refleksi Sejarah Alkukturasi Kebudayaan Masyarakat Sumatera Selatan. *Jambura History and Culture Journal*, 1(1), 26-37.
- Putra, D.T.A., & Wargadalem, F. (2020). Pemberontakan PRRI Sumatra Selatan Tanpa Dewan Garuda. *Sejarah dan Budaya: Jurnal Sejarah, Budaya, dan Pengajarannya*, 14(2), 32-44. doi:http://dx.doi.org/10.17977/um020v14i22020p32-44
- Samsudin, I., & Iwan, M. (2020) *Rumah Limas dan Lamban Ulu Ogan*. Palembang: Museum Negeri Sumatera Selatan.
- Saragih, M., et al. (2002). *Buku Panduan Museum Negeri Sumatera Selatan*. Palembang: Pemerintah Provinsi Sumatera Selatan.
- Sary, R.K. (2015). Rumah Limas Palembang Warisan Budaya Yang Hampir Punah. *Jurnal Berkala Teknik*, 5 (2), 856-863.
- Schitger, F.M. (1937). *The Archeology of Hindoo Sumatra*. Leiden: Brill.
- Siswanto, A. (2013) *Arsitektur Tradisional Sumatera Selatan (Seri 1)*. Yogyakarta: Percetakan Pohon Cahaya.
- Sutaarga, M.A. (1998). *Pedoman Penyelenggaraan dan Pengelolaan Museum*. Jakarta: Departemen Pendidikan dan Kebudayaan Direktorat Jenderal Kebudayaan Proyek Pembinaan Permuseuman Jakarta.
- Syarofie, Y. Personal Interview with Bima Pranata Dewantara. August, 20 2022
- Syukri, A. (2016). *Relasi Sosiologis Syiid Hadrami dengan Kesultanan Palembang*. Skripsi. Universitas Islam Negeri Raden Fatah.


Wargadalem, F.R. (2017). *Kesultanan Palembang dalam Pusaran Konflik (1804-1825)*. Jakarta: Kepustakaan Populer Gramedia

Wijaya, A.A. et al. (2021). Nilai-nilai Kearifan Lokal Rumah Adat Kajang Lako di Jambi. *Ciksetra: Jurnal Pendidikan Sejarah*, 10 (1), 60-69.

_____. (2020). *Pedoman Museum Negeri Sumatera Selatan*. Palembang: Pemerintah Provinsi Sumatera Selatan.

2. Bukti Accepted Submission

[yupa] Editor Decision External Inbox x

 Azmi <ict@fkip.unmul.ac.id> to me ▾ Sun, Mar 3, 8:00 PM ☆ ↶ ⋮

Farida Wargadalem:


We have reached a decision regarding your submission to Yupa: Historical Studies Journal, "The Journey of Rumah Limas Pangeran Syarif Ali South Sumatra".

Our decision is to: Accept Submission

Azmi
azmi@fkip.unmul.ac.id

3. Bukti Konfirmasi Terbit

[yupa] New notification from Yupa: Historical Studies Journal External Inbox x

 Azmi <ict@fkip.unmul.ac.id> to me ▾ Tue, Mar 26, 2:57 PM ☆ ↶ ⋮

You have a new notification from Yupa: Historical Studies Journal:

New announcement.

Link: <https://jurnal.fkip.unmul.ac.id/index.php/yupa/announcement/view/26>

Muhammad Azmi

[Yupa: Historical Studies Journal](#)