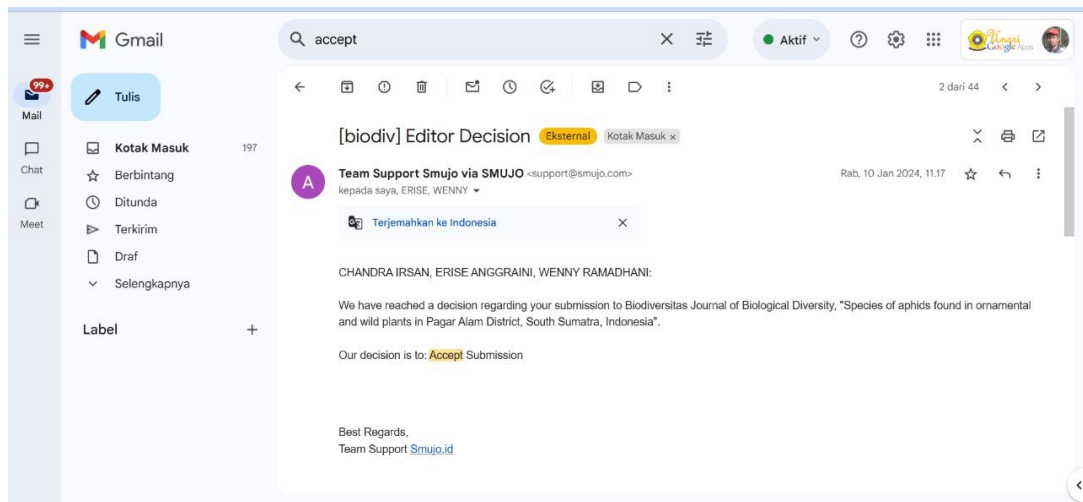


**7. Bukti konfirmasi accepted submission, uncorrected Proof dan billing**  
**10 Januari 2024**





KEMENTERIAN PENDIDIKAN DAN KEBUDAYAAN  
UNIVERSITAS SRIWIJAYA  
**UPT BAHASA**

Jalan Srijaya Negara Bukit Besar, Palembang 30169 Telp. & Faks. 0711-354981  
Jalan Raya Palembang-Prabumulih KM.32 Indralaya Telp. 0711-580064  
Email: [uptbahasa@unsri.ac.id](mailto:uptbahasa@unsri.ac.id)

---

TO WHOM IT MAY CONCERN

Number: 0025/UN9/UPT.BHS/2023

UPT Bahasa Universitas Sriwijaya, hereby verifies that the scientific paper entitled **"Species of Aphids Found in Ornamental and Wild Plants in Highland, Pagar Alam, South Sumatra"** written by Chandra Irsan, Erise Anggraini, and Wenny Ramadhani has been professionally proofread by providing some input (such as the consistency and accuracy in grammar, spelling, punctuation, and wording) so that the English used in the paper is academically correct and appropriate.

Thus this certificate is made for proper use.



Palembang, 6 September 2023

Hendri

Des. Damarini MSLS

NIP. 196201021088031004



## Biodiversitas & Nusantara Biosci.

Society for Indonesian Biodiversity  
Jl. Ir. Sutami 36 A Surakarta 57126  
Tel./Fax: 0271-663375, email: unsjournals@gmail.com  
<http://biodiversitas.mipa.uns.ac.id/>  
<http://biosains.mipa.uns.ac.id/nusbioscience.htm>

## INVOICE

for AUTHOR

DATE	03/01/2024
CUSTOMER ID	696
DUE DATE	10/01/2024

### BILL TO

CHANDRA IRSAN  
Department of Plant Pests and Diseases, Faculty of Agriculture, Universitas Sriwijaya  
Kampus Indralaya, Jl. Palembang-Prabumulih, KM 32 Indralaya Ogan Ilir 30662, South Sumatra, Indonesia  
Tel.: +62-711-580059  
email: chandrairsan@fp.unsri.ac.id

Title:  
Species of aphids found in ornamental and wild plants in Highland, Pagar Alam District, South Sumatra, Indonesia

DESCRIPTION	TAXED	AMOUNT (IDR)
Payment for manuscript publication		4.500.000,00
Payment for English improvement		-
Cost reduction for manuscript presented in the SIB Meeting		-

Subtotal	4.500.000,00
Taxable	-
Tax rate	0,000%
Tax due	-
Other	-
<b>TOTAL IDR</b>	<b>4.500.000,00</b>

### OTHER COMMENTS

1. Currency exchange: USD 1 = IDR 14,000
2. Total bill: IDR 4,500,000,-
3. Transfer to BNI (BNINIDJA), Acc. no. 0356986994 (Dewi Nur Pratiwi)
4. Send the proof of payment to [finance@smujo.id](mailto:finance@smujo.id) and a carbon copy (CC) to [unsjournals@gmail.com](mailto:unsjournals@gmail.com)

If you have any questions about this invoice, please contact  
Dewi NP. HP +62-812-9165-0588, email: [dewinp11@gmail.com](mailto:dewinp11@gmail.com)  
**Terimakasih atas partisipasi anda**

## RECEIPT

Date 05/01/2024

No. 696

Received From CHANDRA IRSAN

Amount IDR Rp 4.500.000,00

Amount EMPAT JUTA LIMA RATUS RIBU RUPIAH

For Payment of Biaya publikasi naskah dengan judul:

"Species of aphids found in ornamental and wild plants in Highland, Pagar Alam District, South Sumatra, Indonesia"



Received

Dewi Nur Pratiwi  
Bendahara

Paid by ☐ Cash  
☒ BNI transfer 356986994  
☐ Money Order

Account Amt	Rp	4.500.000,00
This Payment	Rp	4.500.000,00
Balance Due	Rp	-

# Species of aphids found in ornamental and wild plants in Highland, Pagar Alam District, South Sumatra, Indonesia

CHANDRA IRSAN<sup>1,✉</sup>, ERISE ANGGRAINI<sup>1,2</sup>, WENNY RAMADHANI<sup>3</sup>

<sup>1</sup>Department of Plant Pests and Diseases, Faculty of Agriculture, Universitas Sriwijaya. Kampus Indralaya, Jl. Palembang-Prabumulih, KM 32 Inderalaya Ogan Ilir 30662, South Sumatra, Indonesia. Tel.: +62-711-580059, ✉email: chandrairsan@fp.unsri.ac.id

<sup>2</sup>Prograsm Study of Agroecotechcnology, Faculty of Agriculture, Universitas Sriwijaya. Kampus Indralaya, Jl. Palembang-Prabumulih, KM 32 Inderalaya Ogan Ilir 30662, South Sumatra, Indonesia

<sup>3</sup>Plant Quarantine. Jl. Kol. H. Barlian Km. 6 No. 78 Srijaya, Alang-Alang Lebar ,Palembang 30153, South Sumatera, Indonesia

Manuscript received: 8 September 2023. Revision accepted: xxx December 2023.

**Abstract.** Irsan C, Anggraini E, Ramadhani W. 2023. *Species of aphids found in ornamental and wild plants in Highland, Pagar Alam District, South Sumatra, Indonesia*. Biodiversitas 24: xxxx-xxxx. Aphids are one of the crucial pests in tropical and sub-tropical regions. The presence of aphids in a plant can be very detrimental due to their role as vectors. Aphids exhibit species diversity, but not much information has been reported about the species diversity of aphids associated with essential crops such as ornamental plants. Furthermore, many aphid species, such as wild plants, were found on plants that were not hosts. Therefore, this study reported the species of aphids found in ornamental and wild plants. The field research employed purposive and direct observation to inventory cultivated or wild plants hosting and collecting aphids. The plant selection process included cultivated plants encompassing ornamental plants and wild plants or weeds. The collection and identification of host plants and aphids involved systematic searches for the selected plants and subsequent examination for the presence of aphids. Observations were made to all existing plant species to find those colonized by aphids. This study revealed that the total of 15 species aphids found in Ornamental plants, *Aphis craccivora* Koch, 1854, *Aphis citricola* van der Goot, 1912, *Aphis glycines* Matsumura, 1917, *Aphis gossypii* Glover, 1877, *Aulacorthum solani* Kaltenbach, 1843, *Macrosiphoniella sanborni* Gillette, 1908, *Macrosiphum rosae* Linnaeus, 1758, *Myzus persicae* Sulzer, 1776, *Neomyzus circumflexus* Buckton, 1876, *Pentalonia caladii* van der Goot, 1917, *Rhopalosiphum nymphaeae* Linnaeus, 1761, *Sinemegoura citricola* van der Goot, 1917, *Toxoptera aurantii* Boyer de Fonscolombe, 1841, *Toxoptera citricidus* Kirkaldy, 1907, *Toxoptera odinae* van der Goot, 1917 and the total of 11 species aphids found in weeds, *A. gossypii*, *A. craccivora*, *A. glycines*, *A. citricola*, *Greenidea* sp., *Hysteronura setariae* Thomas, 1878, *Hiperomyzus* sp., *Lipaphis erysimi* Kaltenbach, 1843, *Rhopalosiphum maidis* Fitch, 1856, *Rhopalosiphum padi* Linnaeus, 1758, *Schizaphis rotundiventris* Signoret, 1860.

**Keywords:** Aphids, ornamental plants, wild plants

## INTRODUCTION

Aphids are crucial pests in the tropics and sub-tropics, exhibiting various polyphagous, oligophagous, and monophagous characteristics (Kennedy and Stroyan 1959). One species of aphids can host more than 400 species from 40 families (Bass et al. 2014). In addition to pests, aphids can also be vectors of plant viral diseases (Gadhav et al. 2020); aphids can transmit 275 viruses (Ertunc 2020). In tropical areas, aphids can be found throughout the year due to their parthenogenetic nature of reproduction (Blackman and Eastop 2017). Aphids suck phloem sap of tender plant parts, which can deplete essential nutrients for healthy growth (Cao et al. 2018). Moreover, vector species can further weaken and stunt the growth of infected plants (Jones 2022). Therefore, it is crucial to control aphid populations in gardens and crops.

Many aphid species are found on plants that are not their actual hosts (Maharani et al. 2018). Aphids have one or more secondary, or alternative, host plants in addition to their primary host plants, which are the types of plants they feed on most frequently (Clarke et al. 2020). Alternative plants provide a means of survival when primary hosts are unavailable, during certain seasons, or under certain

environmental conditions (Kumar et al. 2021). In South Sumatra, particularly in the highland areas like Pagar Alam, there are numerous ornamental and native plants. Research on the diversity of aphid species in ornamental and wild plants has less noticed. This study reports the diversity of aphid species found in ornamental and wild plants found in this area. The findings from this study can serve as a valuable resource for aphid management.

## MATERIALS AND METHODS

The field research employed a purposive and direct observation to inventory cultivated or wild plants hosting and collecting aphids. The plant selection included cultivated plants encompassing ornamental plants, as well as wild plants or weeds. Where available, collecting and identifying host plants, aphids, and natural enemies involved systematic searches of all existing plant species to find those colonized by aphids. Any plants colonized by aphids are documented as aphid hosts. Aphid identification was done using identification keys (Blackman and Eastop 2008) in the Laboratory of Entomology, Faculty of Agriculture, Universitas Sriwijaya. Identification relied on



morphological characteristics. The host plants were identified using the weed identification handbook (Kallas 2010; Naidu 2012; Meuninck 2023). The location and aphid colony sizes, including their life color, and photographs of the aphid colonies and their host plants were recorded.

## RESULTS AND DISCUSSION

### Result

#### *Aphids infesting in ornamental plants*

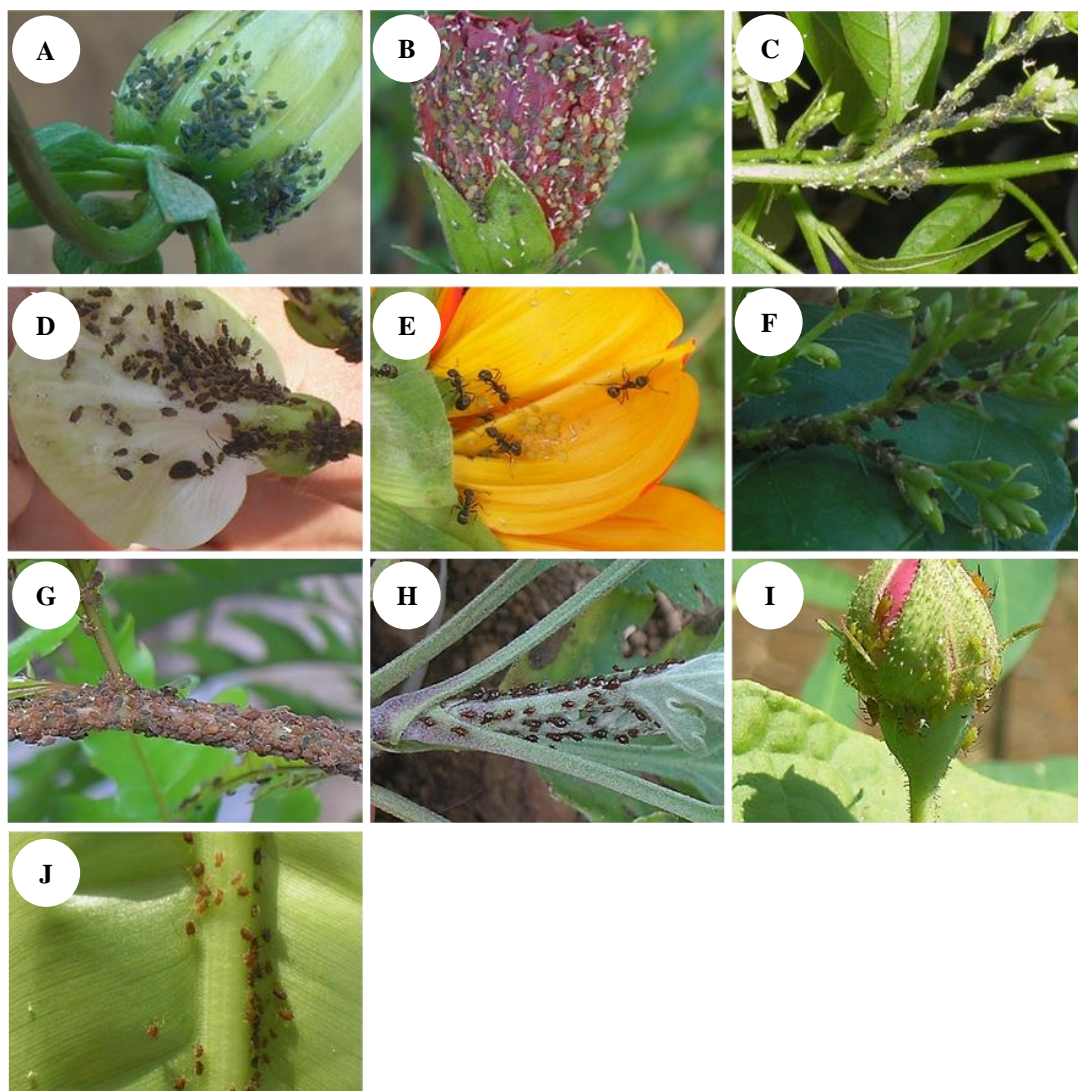
The results showed that 15 aphid species were found in Pagar Alam (Tables 1 and 2). These aphids mostly colonized flowers of various ornamental plants (Table 1, Figure 1).

The relationship between aphids and ants was also recorded. Aphids produce a sweet, sticky substance called honeydew; ants are attracted to this honey because it serves as a food source. When aphids are present, they secrete honeydew, which attracts ants. This research recorded the presence of ants on plant parts colonized by aphids (Table 2).

#### **Aphids infesting in wild plants (weed or non-weed plants)**

In addition, this study documented aphid colonies on flowers, stalks, plant tops, young leaves, and old leaves of wild plants (Table 3, Figure 2).

The presence of ants in aphid colonization symbolizes a mutually beneficial relationship where the ants receive food from the aphids while protecting them. This study recorded the ant attendance in aphids colonization (Table 4).



**Figure 1.** Photos showing colonies of different aphid species in ornamental plants: A. *Aphis gossypii* in *Dahlia* sp. flower; B. *Aphis gossypii* in *Hibiscus rosinensis* flower; C. *Aphis gossypii* in *Cestrum* twig and flower; D. *Aphis craccivora* in *Clitoria ternatea* flower; E. *Aphis glycines* in *Helianthus giganteus* flower; F. *Aphis craccivora* on the *Murayya paniculata* flower; G. *Toxoptera odinae* in the *Mussaenda frondosa*; H. *Macrosiphoniella sanborni*. in *Chrysanthemum* sp. Leaves; I. *Macrosiphum rosae* in *Rosa indica* flower; J. *Rhopalosiphum nymphaeae* in *Canna indica* leaves. Chandra Irsan captured all the photos

**Table 1.** Aphid species recorded in ornamental plants and their colony locations

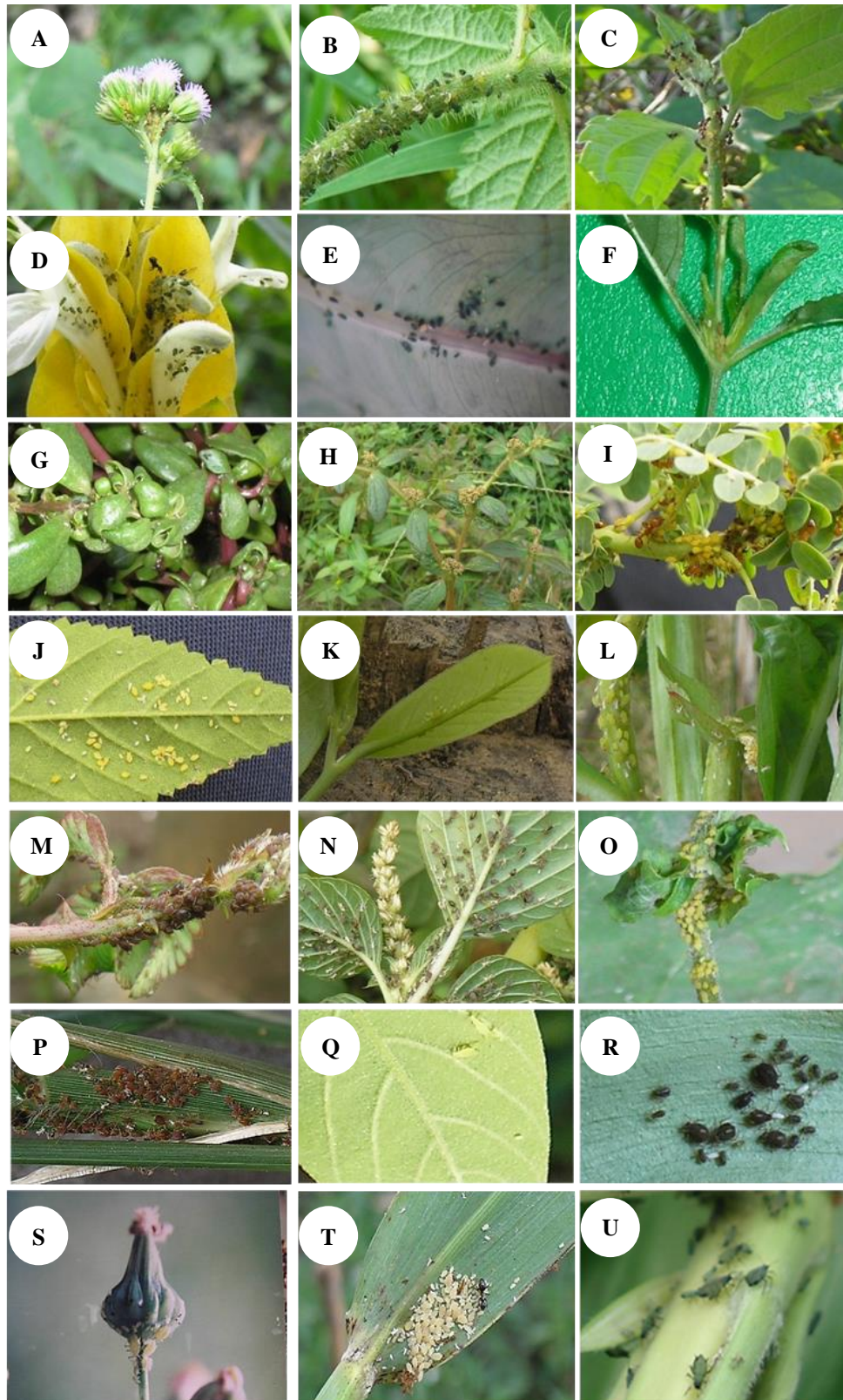
Host plant	Aphid species	Colony location
<i>Aster alpinus</i>	<i>Macrosiphoniella sanborni</i>	Leaves, young twig, flower
<i>Brugmansia suaviolens</i>	<i>Aulacorthum solani</i>	Leaves, flower
	<i>Neomyzus circumflexus</i>	Leaves
	<i>Myzus persicae</i>	Leaves, flower
<i>Caladium</i> sp.	<i>Pentalonia caladii</i>	Leaves,
<i>Cananga odoratum</i>	<i>Aphis gossypii</i>	Leaves, flower
<i>Canna indica</i>	<i>Rhopalosiphum nymphaeae</i>	Leaf
<i>Catharanthus roseus</i>	<i>Aphis citricola</i>	Shoot, young leaves, flower
<i>Cestrum</i> sp.	<i>Aphis gossypii</i>	Shoot, flower
	<i>Neomyzus circumflexus</i>	Young leaves
<i>Clitoria ternatea</i>	<i>Aphis craccivora</i>	Flower
<i>Chrysanthemum</i> sp.	<i>Macrosiphoniella sanborni</i>	Shoot, twig
<i>Dahlia</i> sp.	<i>Aphis gossypii</i>	Flower
<i>Dendrobium</i> sp.	<i>Sinemogoura citricola</i>	Flower
<i>Duranta</i> sp.	<i>Aphis gossypii</i>	Shoot, flower
<i>Helianthus giganteus</i>	<i>Aphis glycines</i>	Flower
<i>Hibiscus rosinensis</i>	<i>Aphis gossypii</i>	Flower
<i>Ixora paludosa</i>	<i>Aphis gossypii</i>	Flower
	<i>Toxoptera aurantii</i>	Shoot, young leaves
<i>Ixora</i> sp.	<i>Aphis citricola</i>	Flower
	<i>Aphis gossypii</i>	Flower
	<i>Toxoptera aurantii</i>	Shoot, flower
<i>Murraya paniculata</i>	<i>Aphis craccivora</i>	Young Twig
	<i>Toxoptera citricidus</i>	Shoot, flower
<i>Mussaenda frondosa</i>	<i>Aphis citricola</i>	Shoot, flower
	<i>Toxoptera odinae</i>	Shoot, flower
<i>Rosa indica</i>	<i>Macrosiphum rosae</i>	Flower
<i>Spondias dulcis</i>	<i>Aphis citricola</i>	Flower

**Table 2.** Aphid species recorded in ornamental plants and the presence of the ants in the plant parts colonized

Aphid species	Ornamental plants	Aphids life color	Plant parts colonized	Ant attendance	Total individual of ant
<i>Aphis craccivora</i>	<i>Clitoria ternatea</i>	Black	Flowers	+	3
	<i>Murraya paniculata</i>	Black	Flowers	+	2
<i>Aphis citricola</i>	<i>Catharanthus roseus</i>	Greenish yellow	Flowers	+	2
	<i>Ixora</i> sp.	greenish yellow	Flowers	+	3
	<i>Mussaenda frondosa</i>	greenish yellow	Shoots, flowers	+	7
	<i>Spondias dulcis</i>	greenish yellow	Flowers	+	8
<i>Aphis glycines</i>	<i>Helianthus giganteus</i>	Greenish yellow	Flowers	+	3
<i>Aphis gossypii</i>	<i>Cestrum</i> sp.	Green	Shoots, flowers	+	4
	<i>Cananga odoratum</i>	Light green	Shoots, flowers	+	1
	<i>Dahlia</i> sp.	Green dark	Flowers	+	2
	<i>Duranta</i> sp.	Light green	Shoots, flowers	+	5
	<i>Hibiscus rosinensis</i>	Dark green	Flowers	+	6
	<i>Ixora paludosa</i>	Light green	Flowers	+	2
	<i>Ixora</i> sp.	Light green	Flowers	+	7
<i>Aulacorthum solani</i>	<i>Brugmansia suaviolens</i>	Greenish yellow	Leaves, flowers	-	0
<i>Macrosiphoniella sanborni</i>	<i>Aster alpinus</i>	Brown black	Leaves, twigs, flowers	+	5
	<i>Chrysanthemum</i> sp.	Reddish brown	Leaves, twigs	+	5
<i>Macrosiphum rosae</i>	<i>Rosa indica</i>	Green	Flowers	-	0
<i>Myzus persicae</i>	<i>Brugmansia suaviolens</i>	Greenish yellow	Leaves, flowers	-	0
<i>Neomyzus circumflexus</i>	<i>Cestrum</i> sp.	Light green	Young leaves,	-	0
	<i>Brugmansia suaviolens</i>	Light green	flowers	-	0
			Flowers		
<i>Pentalonia caladii</i>	<i>Caladium</i> sp.	Brown-black	Leaves	+	7
<i>Rhopalosiphum nymphaeae</i>	<i>Canna indica</i>	Green black	Leaves	+	1
<i>Sinemogoura citricola</i>	<i>Dendrobium</i> sp.	Brown	Flowers	-	0
<i>Toxoptera aurantii</i>	<i>Ixora paludosa</i>	Brown black	Flowers	+	5
	<i>Ixora</i> sp.	Brown black	Flowers	+	4
<i>Toxoptera citricidus</i>	<i>Murraya paniculata</i>	Black	Stems	+	6
<i>Toxoptera odinae</i>	<i>Mussaenda frondosa</i>	Reddish-brown	Flowers	+	4

Notes: (+) = present; (-) = absent





**Figure 2.** Aphids found infesting wild plants A. *Aphis gossypii* in *Ageratum conyzoides*; B. *Aphis gossypii* in *Croton hirtus*; C. *Aphis gossypii* in *Eupatorium odoratum*; D. *Aphis gossypii* in *Pachystochys* sp.; E. *Pentalonia caladii* in *Caladium* sp.; F. *Aphis gossypii* in *Alternanthera sessilis*; G. *Aphis gossypii* in *Portulaca oleraceae*; H. *Aphis gossypii* in *Euphorbia hirta*; I. *Aphis citricola* in *Phyllanthus nerruri*; J. *Aphis citricola* in *Sida rhombifolia*; K. *Aphis citricola* in *Annona muricata*; L. *Aphis citricola* in *Ludwigia peruviana*; M. *A. craccivora* in *Mimosa pudica*; N. *Aphis craccivora* in *Amaranthus gracilis*; O. *Aphis glycine* in *Mikania micrantha*; P. *Hysteneura* sp. in *Eleusin* sp.; Q. *Greenidae* sp. in *Bridelia tomentosa* young leaves.; R. *Hyperomyzus* sp. in *Echinocloa crusgali*; S. *Lipaphis erysimi* in *sonchus arvensis*; T. *Rhopalosiphum padi* in *Oryza rufipogon*; U. *Rhopalosiphum maidis* in *Oryza rufipogon*. All the photos were captured by Chandra Irsan

**Table 3.** Species of aphids found in wild (weed or non-weed) plants and their colony locations

Host plant	Weeds or non-weed plants	Aphid species	Colony location
<i>Ageratum conyzoides</i>	Weed	<i>Aphis gossypii</i>	Shoots, young leaves, old leaves, flowers
<i>Alternanthera philoxeroides</i>	Weed	<i>Aphis gossypii</i>	Shoots, buds
<i>Alternanthera sessilis</i>	Weed	<i>Aphis gossypii</i>	Shoots, buds
<i>Amaranthus gracilis</i>	Weed	<i>Aphis craccivora</i>	Flowers, shoots, young leaves, old leaves
<i>Blumea lacera</i>	Weed	<i>Lipaphis erysimi</i>	Flowers, shoots, and buds
<i>Croton hirtus</i>	Weed	<i>Aphis gossypii</i>	Flowers, shoots, young leaves, old leaves, young twigs
<i>Cynodon dactylon</i>	Weed	<i>Schizaphis rotundiventris</i>	Flower, flower stalks
<i>Cyperus rotundus</i>	Weed	<i>Schizaphis rotundiventris</i>	Flower, flower stalks, leaf axils
<i>Cyperus compressus</i>	Weed	<i>Schizaphis rotundiventris</i>	Flower, flower stalks, leaf axils
<i>Digitaria ciliaris</i>	Weed	<i>Hysteroneura setariae</i>	Flower, flower stalks
<i>Echinocloa crusgali</i>	Weed	<i>Hyperomyzus</i> sp.	Young leaves, old leaves
<i>Ecliptica prostrata</i>	Weed	<i>Aphis gossypii</i>	Shoots, young leaves
<i>Eleusin indica</i>	Weed	<i>Hysteroneura setariae</i>	Flower, flower stalks, leaf axils
		<i>Rhopalosiphum maidis</i>	Flower, flower stalks, leaf axils
<i>Emilia sonchifolia</i>	Weed	<i>Aphis gossypii</i>	Flower, flower stalks, shoots
<i>Eragrostis tenella</i>	Weed	<i>Hysteroneura setariae</i>	Flower, flower stalks, seeds
<i>Euphorbia hirta</i>	Weed	<i>Aphis gossypii</i>	Young leaves, old leaves
<i>Eupatorium odoratum</i>	Weed	<i>Aphis gossypii</i>	Young leaves, old leaves,
		<i>Aphis glycines</i>	Shoot, young twigs
<i>Hymenochera acutigluma</i>	Weed	<i>Hysteroneura setariae</i>	Flowers, flower stalks, leaf axils
<i>Bridelia tomentosa</i>	Non-weed	<i>Greenidea</i> sp.	Young leaves
<i>Lophatherum gracile</i>	Weed	<i>Hysteroneura setariae</i>	Young leaves, old leaves, leaf axils
		<i>Rhopalosiphum maidis</i>	Young leaves, old leaves, leaf axils
<i>Melastoma affine</i>	Non-weed	<i>Aphis gossypii</i>	Shoots, young leaves
<i>Mikania micrantha</i>	Weed	<i>Aphis gossypii</i>	Shoots, young leaves, old leaves
		<i>Aphis glycines</i>	Shoot, young twig
<i>Mimosa invisa</i>	Weed	<i>Aphis craccivora</i>	Shoots, pods
<i>Mimosa pudica</i>	Weed	<i>Aphis craccivora</i>	Shoots, pods, flowers
<i>Mimosa vigra</i>	Non-weed	<i>Aphis craccivora</i>	Shoots, pods
<i>Oryza rufipogon</i>	Weed	<i>Rhopalosiphum padi</i> ,	Old leaves, young leaves (shoot), leaf axils
	Weed	<i>Rhopalosiphum maidis</i>	Old leaves, young leaves (shoot), leaf axils
<i>Oxonopus compressus</i>	Weed	<i>Hysteroneura setariae</i>	Flowers, flower stalks, leaf axils
<i>Paspalum conjugatum</i>	Weed	<i>Hysteroneura setariae</i>	Flowers, flower stalks, seeds
<i>Phyllanthus neruri</i>	Weed	<i>Aphis citricola</i>	Shoot, young leaves, old leaves, young twigs, petioles
<i>Portulaca oleraceae</i>	Weed	<i>Aphis craccivora</i>	Shoots, young leaves, flowers
<i>Physalis angulata</i>	Weed	<i>Aphis craccivora</i>	Shoots, young leaves, old leaves
	Weed	<i>Aphis gossypii</i>	Shoots, young leaves, old leaves
<i>Rorippa indica</i>	Weed	<i>Lipapis erysimi</i>	Flowers, fruits, shoots, young leaves
<i>Sida rhombifolia</i>	Weed	<i>Aphis gossypii</i>	Shoots, young leaves, old leaves, fruit/seeds
<i>Sonchus arvensis</i>	Weed	<i>Lipapis erysimi</i>	Young leaves, fruit stalks, flowers, fruits

**Table 4.** Aphid species were recorded in wild plants, and the presence of ants in the plant parts colonized

Aphid species	Wild plants	Aphids life color	Plant parts colonized	Ant attendance	Total individual of ant
<i>Aphis gossypii</i>	<i>Ageratum conyzoides</i>	Light green	Shoots, young leaves, old leaves, flowers	+	5
	<i>Alternanthera philoxeroides</i>	Light green	Shoots, buds	+	3
	<i>Alternanthera sessilis</i>	Light green	Shoots, buds	-	0
	<i>Croton hirtus</i>	Dark green	Shoots, buds	+	7
	<i>Ecliptica prostrata</i>	Green	Flowers, shoots, young leaves, old leaves, young twigs	+	5
	<i>Emilia sonchifolia</i>	Green	old leaves, young twigs	+	6
	<i>Euphorbia hirta</i>	Light green	Shoots, young leaves	+	7
	<i>Eupatorium odoratum</i>	Light green	Flower, flower stalks, shoots	+	8
	<i>Melastoma affine</i>	Light green	Young leaves, old leaves	+	8
	<i>Mikania micrantha</i>	Light green	Young leaves, old leaves, young twigs	+	9
	<i>Physalis angulata</i>	Yellowish	twigs	+	10
	<i>Sida rhombifolia</i>	green	Shoots, young leaves	-	0
	<i>Sonchus arvensis</i>	Yellowish	Shoots, young leaves, old leaves		
	<i>Portulaca oleraceae</i>	green	Shoots, young leaves, old leaves, fruit/seeds		
	<i>Mimosa pudica</i>	Black	Shoots, young leaves, old leaves		
<i>Aphis craccivora</i>	<i>Amaranthus gracilis</i>	Black	Flowers, shoots, young leaves, old leaves	+	3
	<i>Mimosa invisa</i>	Black	old leaves	+	2
	<i>Mimosa pudica</i>	Black	Shoots, pods	+	3
	<i>Mimosa vigra</i>	Black	Shoots, pods, flowers	+	4
	<i>Portulaca oleraceae</i>	Black	Shoots, pods	+	7



	<i>Physalis angulata</i>	Black	Shoots, young leaves, flowers	+	4
			Shoots, young leaves, old leaves		
<i>Aphis glycines</i>	<i>Eupatorium odoratum</i>	Greenish yellow	Young leaves, old leaves, young twigs	+	6
	<i>Mikania micrantha</i>	Light green	Shoots, young leaves, old leaves	+	4
<i>Aphis citricola</i>	<i>Phyllanthus neruri</i>	Greenish yellow	Shoot, young leaves, young twigs, petioles	+	5
<i>Greenidea</i> sp.	<i>Bridelia Tomentosa</i>	Greenish yellow	Young leaves	-	0
<i>Hystrotraneura setariae</i>	<i>Digitaria ciliaris</i>	Reddish-brown	Flower, flower stalks	+	3
	<i>Eleusine indica</i>	Reddish-brown	Flower, flower stalks, leaf axils	+	4
	<i>Eragrostis tenella</i>	Reddish-brown	Flower, flower stalks, seeds	+	4
	<i>Hymenochera acutigluma</i>	Reddish-brown	Flowers, flower stalks, leaf axils	+	3
	<i>Lophatherum gracile</i>	Reddish-brown	Young leaves, old leaves, leaf axils	+	6
	<i>Oxonopus compressus</i>	Reddish-brown	Flower, flower stalk, leaf axils	+	3
	<i>Paspalum conjugatum</i>		Flower, flower stalk, seeds	+	6
<i>Hyperomyzus</i> sp.	<i>Echinocloa crusgali</i>	Black	Young leaves, old leaves	-	0
<i>Lipaphis erysimi</i>	<i>Blumea lacera</i>	Whitish green	Flowers, shoots, and buds	+	4
	<i>Rorippa indica</i>	Whitish green	Flower, fruit, shoots, young leaves	+	4
	<i>Sonchus arvensis</i>	Whitish green	Young leaves, fruit stalks, flowers, fruit	+	5
<i>Rhopalosiphum maidis</i>	<i>Eleusine indica</i>	Green	Flower, flower stalks, leaf axils	+	3
	<i>Lophatherum gracile</i>	Green	Young leaves, old leaves, leaf axils	+	4
	<i>Oryza rufipogon</i>	Green	Old leaves, young leaves (shoot), leaf axils	-	0
<i>Rhopalosiphum padi</i>	<i>Oryza rufipogon</i>	Whitish green	Old leaves, young leaves (shoot), leaf axils	+	4
<i>Schizaphis rotundiventris</i>	<i>Cynodon dactylon</i>	Green	Flowers, flower stalks	+	6
	<i>Cyperus rotundus</i>	Green	Flowers, flower stalks, leaf axils	+	4
	<i>Cyperus compressus</i>	Green	Flowers, flower stalks, leaf axils	+	4

Notes: (+): present, (-): absent

## Discussion

In the present study, some aphid species were found on several ornamental plants in Pagar Alam, the location of aphid colonization on the plants varied. On *Aster alpinus* L., aphids were found to form colonies on the stems or young leaf shoots, and the colonies were relatively large. The color of the aphids was dark brown to black. The colonized plant parts showed symptoms of stunting. The identification results showed that the aphids were *Macrosiphoniella sanborni* Gillette, 1908 associated with ants. On the *Brugmansia suaveolens* (Humb. & Bonpl. ex Willd.) Bercht. & J. Presl, *Myzus persicae* Sulzer, 1776 were found on the undersides of old leaves or leaves that have turned yellow. The colonies were relatively small. The aphids found were green and large bodies. The colonized plant parts did not show any signs of disease. On *Caladium* sp. was found one species of aphids: *Pentalonia caladii* van der Goot, 1917. *P. caladii* was known and found in taro plants; the aphids formed colonies under the surface of young and older leaves (Bhadra and Agarwala 2014). This study found that the occupied leaf areas did not display severe symptoms; the aphids were yellow-green to dark green. The wingless adult aphids often had a white, flour-like appearance on their bodies. On the *Cananga odorata* (Lam.) Hook.f. & Thomson (ylang-ylang), colonies of *Toxoptera aurantii* Boyer de Fonscolombe, 1841 were found on the undersides of the leaves, the shoots, buds, and unopened flower petals. The *T. aurantii*

colonies found were relatively large. Colonized parts, especially shoots, showed signs of stunting. The aphids found were brown to black. The colonies of *T. aurantii* were found to be associated with black ants. Aphids on *Canna indica* L. (Indian shot, African arrowroot) were found to form colonies in the leaf axils and under the leaf surface near the leaf base. The colonies were quite large. The aphids were dark brown to dark red coloring with a medium-sized body and the identification results showed that the aphids were *Rhopalosiphum nymphaeae* Linnaeus, 1761 (Ghosh and Singh 2004). The colonies of *R. nymphaeae* were found to be associated with ants. In the *Catharanthus roseus* (L.) G. Don (periwinkle), *Aphis citricola* van der Goot, 1912 aphids were found. The aphids were yellow-green, sifunculi, and black cauda. The aphids formed colonies on flowers and shoots, and the colonized plant parts showed no disease symptoms. On *Cestrum* sp. (Bastard jasmine), aphids formed colonies on the undersides of young leaves, shoots, and within flower parts, especially between petals or stalks that had not fully bloomed; the colonies were quite large. The body color of aphids was green to dark green, with small to medium-sized bodies. The colonized plant parts, especially leaves, showed stunting symptoms. The identification results showed that the aphids were *Aphis gossypii* Glover, 1877. The aphid colonies found were consistently associated with ants. Aphids on *Clitoria ternatea* L. were found to form colonies on flower parts, flower crowns, stems, and young

leaves. The aphids were brown to black. Colonized plant parts, especially shoots and young leaves, showed stunting symptoms. The identification results showed that the aphids were *Aphis craccivora* Koch, 1854. These colonies were consistently associated with ants. The aphids on the *Dahlia* sp. formed colonies on unopened flower buds, with a significant population among the blooming petals. The body color was green to dark green. The identification results showed that the aphids were *A. gossypii*. According to this present study, *Sinemegoura citricola* van der Goot, 1917 colonies were found on the young leaves of *Dendrobium* sp., with the color body of the *S. citricola* aphids were yellow, green to dark green, and the colonized plants showing no disease symptoms, and were associated with ants. On *Duranta* sp., colonies of aphids on the undersides of young leaves, and the colonized plant parts showed stunting symptoms. The colonies were very large. The aphids were green. The identification results showed that the aphids were *A. gossypii*. The aphid colonies were consistently associated with ants. Furthermore, on the *Helianthus annuus* L., aphid colonies were found between the flower petals. The colonized flowers, especially the crowns, tended to fall off easily. The aphids were green and yellow in color. The colonies were small. The identification results showed that the aphids were *A. gossypii*. These aphid colonies were associated with ants. Aphid colonies on *Helianthus* sp. were found on the undersides of old leaves. These colonies were small in size. The aphids were green with a medium body size. The colonized plant parts did not show any disease symptoms. The identification results showed that the aphids were *Myzus ornatus* Laing, 1932. The aphid colonies were not associated with ants. Within the colonies, mummified aphids that Aphididae parasitized were found. On the *Hibiscus rosa-sinensis* L., aphids ranging from yellow to dark green were found. The aphids formed colonies on flower buds, unopened flower crowns, and the undersides of aging leaves. The colonies grew to be very large. The identification results showed that the aphids were *A. gossypii*. The aphid colonies were consistently associated with ants. Two types of aphids were found on the flowering plant *Ixora paludosa* (Blume) Kurz. First, the aphids formed colonies on the undersides of young leaves that were still red or light green and sometimes on flower stalks that had not yet bloomed. The occupied plant parts showed symptoms such as stunted leaf growth, leaf shrinkage, necrotic spots on the leaf surface, and slightly downward-curved leaf edges. The upper leaf surface looked wet and sticky, like sugar. The aphids had yellow, green, or slightly dark green bodies, with some wingless adults having a powdery white upper surface. The identification results showed that the aphids were *A. gossypii* almost always associated with ants. The second type of aphids on *Ixora paludosa* formed colonies under the surface of young and older leaves. The colonies could also be found on newly emerging flowers and leaves. The plant parts occupied by these aphids did not show obvious signs of illness. These aphids were dark red to black, with once-branched stigma and venation in their black wings. The identification results showed that the aphids were *T. aurantii*. These aphids were also associated with ants.

Moreover, two forms of aphids were discovered in *Ixora* sp. flower plants. These aphids occupied the shoots, young leaves, and unopened flowers; the affected plant parts did not show obvious symptoms. The aphids exhibited colors ranging from yellow and green to a slightly darker green. Sometimes, the upper surface of the wingless imago's body appeared white, resembling flour. The identification results showed that these aphids were *A. gossypii*. These aphid colonies were almost always associated with ants. Another species of aphids formed colonies on flower stalks that had not yet bloomed and on newly emerging shoots or leaves. The presence of these aphids on the plant did not induce plant disease symptoms. The aphids were yellow or yellowish green, with black cauda and siphunculi. Their bodies were very small to small. The identification results showed that the aphids were *A. citricola*. The colonies of *A. citricola* were also frequently found in association with ants. Two types of aphids were found on *Mussaenda frondosa* L., each forming colonies in different locations. The first type formed colonies on young leaves, shoots, and flowers. The plant parts they occupied showed no obvious disease symptoms. The identification results showed that the aphids were *Toxoptera odinae* van der Goot, 1917. The aphids were yellow, green, and dark green (Blackman et al. 2011). The second type of aphids formed colonies on the stems or young twigs, appearing densely clustered as if piled up. The aphid colonies could also be found on young leaves, shoots, and within flower parts. The plant parts they infested showed no signs of diseases. The aphids were yellow or yellow-green, with black cauda and siphunculi. They had tiny to small bodies. The identification results showed that the aphids were *A. citricola*. Many aphid species infest various ornamental plants because these insects are attracted to such plants due to the rich nutrient content in the plant sap (Braham et al. 2023).

The results showed that 34 species of wild plants, including weeds, were growing in the yard colonized by aphids. This indicated that multiple species of aphids colonized various host plants. The aphid species colonizing these plants were generally consistent within the same taxon. *Ageratum conyzoides* L. was infested by *A. gossypii*. These aphids formed colonies on the flower sections, shoots, lower surfaces of young leaves, or leaves turning yellow. The aphids were green, yellow-green to dark green, often forming large colonies. *Alternanthera philoxeroides* (Mart.) Griseb., or alligator grass, was also colonized by *A. gossypii*. Small colonies were found on shoots or stems. These aphids had small bodies and were green, ranging from yellow-green to dark green. *Alternanthera sessilis* (L.) R.Br. ex DC. was colonized by *A. gossypii*, forming colonies on shoots, flowers, and fruit. The colonies were typically large, and often associated with tiny brown ants. *Amaranthus gracilis* Desf. was infested by *A. craccivora*. These aphids established colonies on shoots, flowers, and young and old leaves. They were dark brown to black, with shiny black wingless imagoes. Colonies of these aphids were associated with both black and red ants. *Blumea lacera* (Burm.fil.) DC. was colonized by *Lipaphis erysimi* Kaltenbach, 1843. These aphids were bright green and of medium size. The colonies formed on flowers, flower

stalks, and the undersides of the leaves at the top. The aphid colonies were not associated with ants. *Croton hirtus* L'Hér., or fire grass, was infested by *A. gossypii*; the aphids were yellow-green to dark green. The colonies were found on the stems, leaves, buds, and flowers, often forming large colonies. *Cynodon dactylon* (L.) Pers. or Bermuda grass was colonized by *Schizaphis rotundiventris* Signoret, 1860. The aphids colonized the flowers, flower stalks, and sometimes the plant leaf axils. Small colonies were formed. The aphids were brown to reddish brown. They were associated with ants. *Cyperus rotundus* L., or nut grass, was infested by *S. rotundiventris* aphids. The colonies were found on flower stalks, flowers, and leaf axils. The colonies were quite large and associated with both black and red ants. The aphids were dark brown in color. *Cyperus compressus* L., or grass puzzle, was colonized by *S. rotundiventris* aphids, forming colonies in the flowers, flower stalks, and sometimes in the axils and leaves of the shoots or buds. Small colonies were observed. *Digitaria ciliaris* (Retz.) Koeler was infested by *Hysteroneura setariae* Thomas 1878 aphids, with small colonies scattered on the flowers and flower stalks. These aphids were light brown to brown in color. *Echinochloa crus-galli* (L.) P.Beauv., or water hyacinth plants, were colonized by *Hiperomyzus* sp. aphids. These aphids were dark brown to black and formed large colonies on the undersides of both young and old leaves. The aphid colonies were never found in association with ants. *Eclipta prostrata* (L.) L., or urang-arang, was colonized by *A. gossypii*, forming small colonies on the shoots and flowers. The aphids were bright green to blackish green. The aphid colonies were also consistently associated with ants. *Eleusin indica* (L.) Gaertn. was colonized by two species of aphids: *Hysteroneura setariae* Thomas, 1878 and *Rhopalosiphum maidis* Fitch, 1856. *H. setariae* formed colonies in flower parts, flower stalks, and leaf axils, resulting in large colonies. *H. setariae*'s body color ranged from red-brown to dark brown. The colonies were consistently associated with ants. The aphids of *R. maidis* formed colonies in the leaf axils and undersides of leaves and leaf shoots that had not yet opened. The colonies were not densely packed. The leaf aphids of *R. maidis* were green in color, with distinct black siphunculi and cauda. These aphids had relatively large bodies with a slightly elongated shape. *R. maidis* colonies were always associated with ants. The plant *Emilia sonchifolia* (L.) DC. ex Wight, characterized by its purple flowers, was colonized by *A. gossypii*; the aphids were yellow to green in color. The colonies formed near flowers, flower stalks, and shoot leaves. *Eragrostis tenella* was infested by *H. setariae* aphids. The aphids were brown to red-brown. Small colonies formed on flowers near the seeds, with groups of aphids surrounding the plant's seeds. The aphids of *H. setariae* were consistently associated with ants. *Euphorbia hirta* L., or wart grass, was colonized by *A. gossypii*. The aphids formed colonies on the undersides of leaves, resulting in stunted growth of the leaves. The aphids were yellow to dark green in color. *A. gossypii* colonies on *E. hirta* plants were consistently associated with ants. *Eupatorium odoratum* L. was colonized by *A. gossypii* and *A. citricola*. *A. gossypii* formed colonies in the buds, young

leaves, old leaves, and young twigs. Young leaves colonized by *A. gossypii* became stunted with an irregular shape. *A. gossypii* found in this plant showed yellow-green to dark-green body color. The colonies of *A. citricola* formed on the young twigs near the shoots, with these aphids displaying yellow-green coloration and having black siphunculi and cauda. Aphid colonies of *A. gossypii* and *A. citricola* on *E. odoratum* plants were associated with either black or red ants. *Hymenachne acutigluma* (Steud.) Gilliland, or hair axis, was colonized by *H. setariae*, which formed colonies on the flower stalks and flowers. The colonized parts of the plants did not display any noticeable symptoms. *Lagerstromia* sp., or *kenidai*, was infested by *Greenidae* sp. These aphids had bright green bodies and distinctive elongated siphunculi with thorns. The aphids formed colonies on the undersides of leaves, especially on young leaves. The colonized leaves did not show any disease symptoms. *Lophatherum gracile* Brongn. or bamboo grass plants, were colonized by two species of aphids: *H. setariae* and *R. maidis*. The aphids of *H. setariae* formed colonies on the undersides of leaves, leaf shoots, and leaf axils. The colonized leaves did not show any disease symptoms. *H. setariae* aphids were brown to red-brown. *R. maidis* aphids also formed colonies on the undersides of leaves, but the colonies were small. *R. maidis* aphids were green to bright green, with black siphunculi and cauda. It was possible for colonies of the two species of aphids on *L. gracile* to mix. In addition, *Melastoma affine* D.Don was colonized by *A. gossypii*. The colonies formed on shoots, particularly near newly emerging shoots and newly emerging fruits and flowers. The body color of aphids ranged from yellow to green. The colonized plant parts did not show any disease symptoms. *Mikania micrantha* Kunth was colonized by *A. gossypii* and *Aphis glycines* Matsumura, 1917. *A. gossypii* formed colonies on the shoots, especially on the undersides of the leaves, resulting in stunted and curled leaves. *A. glycine* formed colonies on the branches. The colonies were densely populated. *A. glycines* aphids were light green to green in color. The colonized plant parts became distorted. The two species of aphids could mix to form a single colony. *Mimosa invisa* Mart. ex Colla (cater-grass) was colonized by *A. craccivora*. The aphids of *A. craccivora* on *M. invisa* plants formed colonies only on the shoots with small colonies. The aphids appeared dark black with wingless imagoes. *Mimosa pudica* L. was observed to be colonized by *A. craccivora*. The aphids formed colonies on shoots, especially young shoots, and occasionally on flowers and pods. The aphids were black and of medium size, resulting in stunted growth of the colonized plant parts. The colonies were quite large. *Mimosa pigra* L. was colonized by *A. craccivora*. The colonies of aphids occupied the pods and shoots with small colonies. The nymphs of aphids were black, and wingless adults were shiny black. The colonized plant parts did not show any disease symptoms. *Oryza rufipogon* Griff. was colonized by two species of aphids: *Rhopalosiphum macr* and *R. maidis*. Both aphids colonized the same plant parts, namely the unopened leaves and the leaf axils with large colonies. The two species could be distinguished by their body color. *R. maidis* appeared green

with black siphunculi and cauda, while *Rhopalosiphum padi* Linnaeus, 1758 appeared white. The colonies of *R. maidis* and *R. padi* in *O. rufipogon* plants were associated with the presence of red ants. *Axonopus compressus* (Sw.) P.Beauv., or *pait* grass, was colonized by *H. setariae* aphids. The colonies occupied flowers, flower stalks, seeds, and sometimes the leaf axils. The aphids were brown to dark brown. Small colonies were formed, and they were also consistently associated with ants. *Paspalum conjugatum* was colonized by *H. setariae* aphids. The colonies occupied flower parts, especially the seeds and flower stalks. Aphids had brown to dark brown bodies. *Phyllanthus neruri* L. was colonized by *A. citricola*. The colonies formed on the shoots and the undersides of leaves and petioles. The colonized parts became distorted, stunted, and wrinkled. The aphids had yellow bodies with black siphunculi and cauda; the colonies formed were large. *Portulaca oleracea* L. plants were colonized by *A. craccivora*. The aphids of *A. craccivora* in *P. oleracea* plants formed colonies on the undersides of leaves, especially young leaves, shoots, and flowers. The colonized plant parts became stunted, and leaf edges curled downward. The aphids had dark brown to black bodies, with wingless imagoes that appeared glossy black. *Physalis angulata* plants were colonized by *Aphis craccivora*. The aphids had dark green to black bodies, with glossy black wingless imagoes. *A. craccivora* formed colonies on the shoots or near the leaf buds. The colonized plant parts did not show disease symptoms. *Rorippa indica* (L.) Hiern, or mustard land, was colonized by *L. erysimi*. The colonies formed on the flowers, fruits, flower stalks, and the lower leaf's surface. The colonized plant parts showed symptoms such as curling and stunting. *Sida rhombifolia* L., or cacabean, was colonized by *A. gossypii*. The aphids had green-yellow to green body colors. The colonies formed on the surface of lower leaves, stalks, and flower petals. The colonized plant parts, especially the shoots, showed curling, and the leaf edges curled downward. *Sonchus arvensis* L. plants were colonized by *L. erysimi*. The aphids had green to whitish green body colors, and the colonies formed on flower stalks, under petals, and on young shoots or leaves. The colonized plant parts became stunted over time.

In general, aphids observed on ornamental and wild plants formed colonies. The colonized plant parts typically displayed typical damage symptoms, but some did not show any symptoms at all. Generally, the plants' symptoms due to aphid colonies were relatively the same, such as stunted growth, abnormal shape, and stunted or curly leaves. These characteristic symptoms serve as indicators of aphid infestations. However, some plants or plant parts did not show symptoms when colonized by aphids. This condition occurred because the colonized parts had reached maximum growth or development. It indicated that the colonized part was not currently undergoing a growth phase. The colonies that did not induce symptoms typically occurred when the colonized leaves had reached their maximum growth or when the leaves and plant parts were old. Furthermore, the old leaves or twigs might not show the typical symptoms associated with aphid infestations.

The plant parts exhibiting characteristic symptoms when colonized by aphids also often experienced a cessation in growth due to the piercing by the aphids. In contrast, the areas surrounding the puncture site continued growing, resulting in some parts developing ordinary while others became stunted (Pettersson et al. 2017). This condition could lead to bending shoots or young stems, curling leaves, downward curling of leaf edges, or stunted leaf growth. In this observation, monocot plants or groups of grasses with narrow leaves generally did not display any distinctive symptoms when colonized by aphids. This might be because the growth or development of their leaves differed from that of dicot plants. Therefore, the presence of aphids in monocot plants was often easier to recognize through the presence of ants. If a plant was found to have a significant number of ants, there was a possibility that aphids had colonized the plant (Tegelaar et al. 2012). Therefore, the presence of ants could serve as an indicator of the aphid colonies. According to this study, ants were present in some aphid colonies from the subfamily Aphidinae, while the ants were absent in some aphid colonies from the macrosiphini subfamily. The bodies of aphids from the subfamily Aphidinae are relatively small and have short siphunculi. On the other hand, aphids, which have large bodies and relatively long siphunculi, are never visited by ants. This happens because long siphunculi are reported to disturb ants, so the ants don't like to come close. Additionally, large aphids and long siphunculi generally do not produce honeydew, so ants do not want to come close.

The absence of ants in aphid colonies could be because the colonies have just formed or the population is still low (Kummel et al. 2013). Aphids colonized flowers because they may offer an accessible and rich food source, sugary plant sap found in new growth or reproductive plant parts. Flowers contain a nutrient-rich nature and easy access to sap; therefore, aphids were attracted to flower saps. In addition, some aphid species were drawn to certain colors (Jakubczyk et al. 2022). Herbs served as an alternative host for aphids in this present study. Aphids consume sugar-rich liquid in plants, known as sap. Aphids considered herbs and other green vegetation as abundant food sources. Aphids utilize needle-like mouthparts to penetrate plant tissues and access this fluid (Brožek et al. 2015). Several aphids colonized herbs such as Indian mustards, *L. erysimi*, and *M. persicae*, the most devastating insects, infesting leaves, stems, and floral parts (Jayaswal et al. 2022). Due to a symbiotic relationship, the prevalence of aphids and ants was frequently correlated. Aphids produced a delicious substance known as honeydew as a waste product, which ants found highly attractive food sources (Nelson and Mooney 2022). The honeydew contained abundant sugars extracted by aphids from the plant juice (Zheng et al. 2022). Ants were drawn to this nutrient-rich food source and would often farm aphids for it. In exchange for honeydew, ants protected aphids from other insects and predators, such as ladybugs, lacewing larvae, and parasitic wasps (Karami-Jamouri et al. 2018). Certain ant species would transport aphids to new host plants for improved foraging opportunities, ensuring that aphids had a continuous food source (Giannetti et al. 2021). Honeydew



not only nourished the ant colony, but its high sugar content also supported the development of their fungus farms (in certain species) and provided energy for the growth of their progeny (Biedermann and Vega 2020). Ornamental plants, and also weeds are generally grown with simple maintenance and usually free pesticides. The ecological habitat of ornamental plants and weeds is assumed to be the same. Therefore, many species of aphids found on ornamental plants were also found on weeds.

In conclusion total of 15 species aphids found in ornamental plants, *A. craccivora*, *A. citricola*, *A. glycines*, *A. gossypii*, *A. solani*, *M. sanborni*, *M. rosae*, *M. persicae*, *N. circumflexus*, *P. caladii*, *R. nymphaeae*, *S. citricola*, *T. aurantii*, *T. citricidus*, *T. odinae*. The total of 11 species aphids found in weeds, *A. gossypii*, *A. craccivora*, *A. glycines*, *A. citricola*, *Greenidea* sp., *H. setariae*, *Hiperomyzus* sp., *L. erysimi*, *R. maidis*, *R. padi*, *S. rotundiventris*.

## ACKNOWLEDGMENTS

The authors thank Universitas Sriwijaya, who supported this research. This research is a part of contract number 0188/UN9.3.1/SK/2023, 18 April 2023, with the chairman Chandra Irsan.

## REFERENCES

- Ghosh S, Singh R. 2004. Aphids on medicinal plants in North East India (Insecta : Homoptera : Aphididae). *Rec Zool Surv India* 102 (1-2): 169-186. DOI: 10.26515/rzsi/v103/i1-2/2004/159495.
- Bass C, Puinean AM, Zimmer CT, Denholm I, Field LM, Foster SP, Gutbrod O, Nauen R, Slater R, Williamson MS. 2014. The evolution of insecticide resistance in the peach potato aphid, *Myzus persicae*. *Insect Biochem Mol Biol* 51: 41-51. DOI: 10.1016/j.ibmb.2014.05.003.
- Bhadra P, Agarwala BK. 2014. On the morphological and genotypic variations of two congeneric species of banana aphid *Pentalonia* (Homoptera : Aphididae) from India. *Aadv Life Sci* 2 (3): 75-81. DOI: 10.5932/j.als.20120203.06.
- Biedermann PHW, Vega FE. 2020. Ecology and evolution of insect-fungus mutualisms. *Ann Rev Entomol* 65: 431-55. DOI: 10.1146/annurev-ento-011019-024910.
- Blackman RL, Eastop VF. 2008. Aphids On The World's Herbaceous Plants And Shrubs 2 Volume Set. John Wiley & Sons, Hoboken, New Jersey.
- Blackman RL, Eastop VF. 2017. Taxonomic Issues. CABI, Wallingford, UK. DOI: 10.1079/9781780647098.0001.
- Blackman RL, Sorin M, Miyazaki M. 2011. Sexual morphs and colour variants of *Aphis* (Formerly Toxoptera) Odinae (Hemiptera, Aphididae) in Japan. *Zootaxa* 3110 (1): 53-60. DOI: 10.11646/zootaxa.3110.1.5.
- Braham M, Boulahia-kheder S, Kahia M, Nouria. S 2023. Aphids and Citrus responses to nitrogen fertilization. *J Saudi Soc Agric Sci* 22 (6):374-83. DOI: 10.1016/j.jssas.2023.03.003.
- Brożek J, Mróz E, Wylęzek D, Depa Ł, Węgierek P. 2015. The structure of extremely long mouthparts in the aphid genus *Stomaphis* Walker (Hemiptera: Sternorrhyncha: Aphididae). *Zoomorphology* 134:431-45. DOI: 10.1007/s00435-015-0266-7.
- Cao HH, Zhang ZF, Wang XF, Liu TX. 2018. Nutrition versus defense : Why *Myzus persicae* (Green peach aphid) prefers and performs better on young leaves of cabbage *PloS One* 13 (4):1-16. DOI: 10.1371/journal.pone.0196219.
- Clarke R, Kehoe MA, Broughton S, Jones RAC. 2020. Host plant affiliations of aphid vector species found in a remote tropical environment. *Virus Res* 281: 197934. DOI: 10.1016/j.virusres.2020.197934.
- Ertunc F. 2020. Emerging plant viruses. In: *Emerging and Reemerging Viral Pathogens*. Academic Press, Cambridge, Massachusetts.
- Gadhav KR, Gautam S, Rasmussen DA, Srinivasan R. 2020. Aphid transmission of potyvirus: The largest plant-infecting RNA virus genus. *Viruses* 12 (7): 773. DOI: 10.3390/v12070773.
- Giannetti D, Mandrioli M, Schifani E, Castracani C, Spotti FA, Mori A, Grasso DA. 2021. First report on the acrobat ant *crematogaster* *scutellaris* storing live aphids in its oak-gall nests. *Insects* 12 (2): 108. DOI: 10.3390/insects12020108.
- Jakubczyk K, Koprowska K, Gottschling A, Janda-Milczarek K. 2022. Edible flowers as a source of dietary fibre (Total, Insoluble and Soluble) as a potential athlete's dietary supplement. *Nutrients* 14 (12): 2470. DOI: 10.3390/nu14122470.
- Jayaswal D, Mainkar P, Kumar K, Agarwal Y, Prabha R. 2022. Pyramiding and evaluation of segregating lines containing lectin and protease inhibitor genes for aphid resistance in *Brassica juncea*. *Indian J Biochem Biophys* 59 (8): 800-807. DOI: 10.56042/ijbb.v59i8.62319.
- Jones RAC. 2022. Alteration of plant species mixtures by virus infection: Managed pastures the forgotten dimension. *Plant Pathol* 71 (6): 1255-81. DOI: DOI: 10.1111/ppa.13571.
- Kallas J. 2010. *Edible Wild Plants*. Gibbs Smith, Layton, Utah.
- Karami-Jamouri T, Mirmoayedi A, Zamani A, Khajehzadeh Y. 2018. The impact of ant attendance on protecting *Aphis gossypii* against two aphidophagous predators and it's role on the intraguild predation between them. *J Insect Behav* 31: 222-39. DOI: 10.1007/s10905-018-9670-4.
- Kennedy JS, Stroyan HLG. 1959. Biology of aphids. *Ann Rev Entomol* 4 (1): 139-60. DOI: 10.1146/annurev.en.04.010159.001035.
- Kumar S, Bhowmick MK, Ray P. 2021. Weeds as alternate and alternative hosts of crop pests. *Indian J Weed Sci* 53 (1): 14-29. DOI: 10.5958/0974-8164.2021.00002.2.
- Kummel M, Brown D, Bruder A. 2013. How the aphids got their spots: predation drives self-organization of aphid colonies in a patchy habitat. *Oikos* 122 (6): 896-906. DOI: 10.1111/j.1600-0706.2012.20805.x.
- Maharani Y, Hidayat P, Rauf A, Maryana N. 2018. Short Communication: New records of aphid species subfamily Aphidinae (Hemiptera: Aphididae) in West Java, Indonesia. *Biodiversitas* 19 (2):460-65. DOI: 10.13057/biodiv/d190219.
- Meuninck J. 2023. *Basic Illustrated Edible Wild Plants and Useful Herbs*. Rowman & Littlefield, Lanham, Maryland, US.
- Naidu VSGR. 2012. *Hand Book on Weed Identification*. Directorate of Weed Science Research, Jabalpur, India.
- Nelson AS, Mooney KA. 2022. The evolution and ecology of interactions between ants and honeydew-producing hemipteran insects. *Ann Rev Ecol Evol Syst* 53: 379-402. DOI: 10.1146/annurev-ecolsys-102220-014840.
- Pettersson J, Tjallingii WF, Hardie J. 2017. Host-plant selection and feeding. In: *Aphids As Crop Pests*. CABI, Wallingford, UK. DOI: 10.1079/9781780647098.0173.
- Tegelaar K, Hagman M, Glinwood R, Pettersson J, Leimar O. 2012. Ant-aphid mutualism: The influence of ants on the aphid summer cycle." *Oikos* 121 (1): 61-66. DOI: 10.1111/j.1600-0706.2011.19387.x.
- Zheng Z, Zhao M, Zhang Z, Hu X, Xu Y, Wei C. 2022. Lactic acid bacteria are prevalent in the infrabuccal pockets and crops of ants that prefer aphid honeydew. *Front Microbiol* 12 (1): 1-17. DOI: 10.3389/fmicb.2021.785016.

# Species of aphids found in ornamental and wild plants in Pagar Alam District, South Sumatra, Indonesia

CHANDRA IRSAN<sup>1,✉</sup>, ERISE ANGGRAINI<sup>1,2</sup>, WENNY RAMADHANI<sup>3</sup>

<sup>1</sup>Department of Plant Pests and Diseases, Faculty of Agriculture, Universitas Sriwijaya. Kampus Indralaya, Jl. Palembang-Prabumulih, Km. 32 Inderalaya Ogan Ilir 30662, South Sumatra, Indonesia. Tel.: +62-711-580059, ✉email: chandrairsan@fp.unsri.ac.id

<sup>2</sup>Prograsm Study of Agroecotechnology, Faculty of Agriculture, Universitas Sriwijaya. Kampus Indralaya, Jl. Palembang-Prabumulih, Km. 32 Inderalaya Ogan Ilir 30662, South Sumatra, Indonesia

<sup>3</sup>Plant Quarantine. Jl. Kol. H. Barlian Km. 6 No. 78, Srijaya, Alang-Alang Lebar, Palembang 30153, South Sumatera, Indonesia

Manuscript received: 8 September 2023. Revision accepted: 22 December 2023.

**Abstract.** Irsan C, Anggraini E, Ramadhani W. 2023. *Species of aphids found in ornamental and wild plants in Pagar Alam District, South Sumatra, Indonesia. Biodiversitas 24: 6602-6612.* Aphids are one of the crucial pests in tropical and sub-tropical regions. The presence of aphids in a plant can be very detrimental due to their role as vectors. Aphids exhibit species diversity, but not much information has been reported about the species diversity of aphids associated with essential crops such as ornamental plants. Furthermore, many aphid species, such as wild plants, were found on plants that were not hosts. Therefore, this study reported the species of aphids found in ornamental and wild plants. The field research employed purposive and direct observation to inventory cultivated or wild plants hosting and collecting aphids. The plant selection process included cultivated plants encompassing ornamental plants and wild plants or weeds. The collection and identification of host plants and aphids involved systematic searches for the selected plants and subsequent examination for the presence of aphids. Observations were made to all existing plant species to find those colonized by aphids. This study revealed that a total of 15 species of aphids were found in Ornamental plants, *Aphis craccivora* Koch, 1854, *Aphis spiraeicola* Patch, 1914, *Aphis glycines* Matsumura, 1917, *Aphis gossypii* Glover, 1877, *Aulacorthum solani* Kaltenbach, 1843, *Macrosiphoniella sanborni* Gillette, 1908, *Macrosiphum rosae* Linnaeus, 1758, *Myzus persicae* Sulzer, 1776, *Neomyzus circumflexus* Buckton, 1876, *Pentalonia caladii* van der Goot, 1917, *Rhopalosiphum nymphaeae* Linnaeus, 1761, *Sinemegoura citricola* van der Goot, 1917, *Toxoptera aurantii* Boyer de Fonscolombe, 1841, *Toxoptera citricidus* Kirkaldy, 1907, *Toxoptera odinae* van der Goot, 1917 and the total of 11 species aphids found in weeds, *A. gossypii*, *A. craccivora*, *A. glycines*, *A. citricola*, *Greenidea* sp., *Hysteronura setariae* Thomas, 1878, *Hiperomyzus* sp., *Lipaphis erysimi* Kaltenbach, 1843, *Rhopalosiphum maidis* Fitch, 1856, *Rhopalosiphum padi* Linnaeus, 1758, *Schizaphis rotundiventris* Signoret, 1860.

**Keywords:** Aphids, ornamental plants, wild plants

## INTRODUCTION

Aphids are crucial pests in the tropics and sub-tropics, exhibiting various polyphagous, oligophagous, and monophagous characteristics (Kennedy and Stroyan 1959). One species of aphids can host more than 400 species from 40 families (Bass et al. 2014). In addition to pests, aphids can also be vectors of plant viral diseases (Gadhav et al. 2020); aphids can transmit 275 viruses (Ertunc 2020). In tropical areas, aphids can be found throughout the year due to their parthenogenetic nature of reproduction (Blackman and Eastop 2017). Aphids suck phloem sap of tender plant parts, which can deplete essential nutrients for healthy growth (Cao et al. 2018). Moreover, vector species can further weaken and stunt the growth of infected plants (Jones 2022). In addition, the honeydew that aphids secrete can lead to the growth of sooty mold, a black fungus that can prevent sunlight from reaching the plant's leaves, thereby impairing photosynthesis, the process by which plants produce food (Singh and Singh 2021). Therefore, it is crucial to control aphid populations in gardens and crops.

Many aphid species are found on plants that are not their actual hosts (Maharani et al. 2018). Aphids have one

or more secondary or alternative host plants in addition to their primary host plants, which are the types of plants they feed on most frequently (Clarke et al. 2020). Alternative plants provide a means of survival when primary hosts are unavailable, during certain seasons, or under certain environmental conditions (Kumar et al. 2021). These secondary hosts may offer less adequate nutrition for insects (Mo and Smilanich 2023). However, they may provide a means of survival when primary hosts are unavailable, during certain seasons, or under certain environmental conditions (Kumar et al. 2021). According to Liu et al. (2017), hibiscus serves as an overwintering host for cotton-specialized aphids but not for cucurbit-specialized aphids; it is evident that host-specialized aphids have refuges during times of food shortage. The life cycles of numerous aphid species exhibit such complexity (Jousselin et al. 2010). They maintain a cycle of host alternation, shifting between their primary hosts (typically woody plants) and secondary hosts (often herbaceous plants) (Yamamoto et al. 2020). Weeds pose a continuous threat in both cropped and non-crop areas, providing food, shelter, and reproductive sites for various pest organisms

(Kumar et al. 2021). This indicates that weeds can serve as alternative hosts for aphids.

In South Sumatra, particularly in the highland areas like Pagar Alam, there are numerous ornamental and wild plants. Research on the inventory of aphid species in ornamental and wild plants has less noticed. This study reports the diversity of aphid species found in ornamental and wild plants found in this area. The findings from this study can serve as a valuable resource for aphid management.

## MATERIALS AND METHODS

The field research employed a purposive and direct observation to inventory cultivated or wild plants hosting and collecting aphids. The plant selection included cultivated plants encompassing ornamental plants, as well as wild plants or weeds. Where available, collecting and identifying host plants, aphids, and natural enemies involved systematic searches of all existing plant species to find those colonized by aphids. Any plants colonized by aphids are documented as aphid hosts. Aphid identification was done using identification keys (Blackman and Eastop 2008) in the Laboratory of Entomology, Faculty of Agriculture, Universitas Sriwijaya. Identification relied on morphological characteristics. The host plants were identified using the weed identification handbook (Kallas 2010; Naidu 2012; Meuninck 2023). The location and aphid colony sizes, including their life color, and

photographs of the aphid colonies and their host plants were recorded.

## RESULTS AND DISCUSSION

### Result

#### Aphids infesting in ornamental plants

The results showed that 15 aphid species were found in Pagar Alam (Tables 1 and 2). These aphids mostly colonized flowers of various ornamental plants (Table 1, Figure 1).

The relationship between aphids and ants was also recorded. Aphids produce a sweet, sticky substance called honeydew; ants are attracted to this honey because it serves as a food source. When aphids are present, they secrete honeydew, which attracts ants. This research recorded the presence of ants on plant parts colonized by aphids (Table 2).

#### Aphids infesting in wild plants (weed or non-weed plants)

In addition, this study documented aphid colonies on flowers, stalks, plant tops, young leaves, and old leaves of wild plants (Table 3, Figure 2).

The presence of ants in aphid colonization symbolizes a mutually beneficial relationship where the ants receive food from the aphids while protecting them. This study recorded the ant attendance in aphids colonization (Table 4).

**Table 1.** Aphid species recorded in ornamental plants and their colony locations

Host plant	Aphid species	Colony location
<i>Aster alpinus</i>	<i>Macrosiphoniella sanborni</i>	Leaves, young twig, flower
<i>Brugmansia suaveolens</i>	<i>Aulacorthum solani</i>	Leaves, flower
	<i>Neomyzus circumflexus</i>	Leaves
	<i>Myzus persicae</i>	Leaves, flower
	<i>Pentalonia caladii</i>	Leaves,
<i>Caladium</i> sp.	<i>Aphis gossypii</i>	Leaves, flower
<i>Cananga odoratum</i>	<i>Rhopalosiphum nymphaeae</i>	Leaf
<i>Canna indica</i>	<i>Aphis spiraeicola</i>	Shoot, young leaves, flower
<i>Catharanthus roseus</i>	<i>Aphis gossypii</i>	Shoot, flower
<i>Cestrum</i> sp.	<i>Neomyzus circumflexus</i>	Young leaves
	<i>Aphis craccivora</i>	Flower
<i>Clitoria ternatea</i>	<i>Macrosiphoniella sanborni</i>	Shoot, twig
<i>Chrysanthemum</i> sp.	<i>Aphis gossypii</i>	Flower
<i>Dahlia</i> sp.	<i>Sinemogoura citricola</i>	Flower
<i>Dendrobium</i> sp.	<i>Aphis gossypii</i>	Shoot, flower
<i>Duranta</i> sp.	<i>Aphis glycines</i>	Flower
<i>Helianthus giganteus</i>	<i>Aphis gossypii</i>	Flower
<i>Hibiscus rosasinensis</i>	<i>Aphis gossypii</i>	Flower
<i>Ixora paludosa</i>	<i>Toxoptera aurantii</i>	Shoot, young leaves
	<i>Aphis spiraeicola</i>	Flower
	<i>Aphis gossypii</i>	Flower
	<i>Toxoptera aurantii</i>	Shoot, flower
<i>Murraya paniculata</i>	<i>Aphis craccivora</i>	Young Twig
	<i>Toxoptera citricidus</i>	Shoot, flower
	<i>Aphis spiraeicola</i>	Shoot, flower
<i>Mussaenda frondosa</i>	<i>Toxoptera odinae</i>	Shoot, flower
	<i>Macrosiphum rosae</i>	Flower
	<i>Aphis spiraeicola</i>	Flower
<i>Rosa indica</i>		
<i>Spondias dulcis</i>		

**Table 2.** Aphid species recorded in ornamental plants and the presence of the ants in the plant parts colonized

Aphid species	Ornamental plants	Aphids life color	Plant parts colonized	Ant attendance	Total individual of ant
<i>Aphis craccivora</i>	<i>Clitoria ternatea</i>	Black	Flowers	+	3
	<i>Murraya paniculata</i>	Black	Flowers	+	2
<i>Aphis spiraecola</i>	<i>Catharanthus roseus</i>	Greenish yellow	Flowers	+	2
	<i>Ixora</i> sp.	greenish yellow	Flowers	+	3
	<i>Mussaenda frondosa</i>	greenish yellow	Shoots, flowers	+	7
	<i>Spondias dulcis</i>	greenish yellow	Flowers	+	8
	<i>Helianthus giganteus</i>	Greenish yellow	Flowers	+	3
<i>Aphis glycines</i>	<i>Helianthus giganteus</i>	Greenish yellow	Flowers	+	3
<i>Aphis gossypii</i>	<i>Cestrum</i> sp.	Green	Shoots, flowers	+	4
	<i>Cananga odoratum</i>	Light green	Shoots, flowers	+	1
	<i>Dahlia</i> sp.	Green dark	Flowers	+	2
	<i>Duranta</i> sp.	Light green	Shoots, flowers	+	5
	<i>Hibiscus rosasinensis</i>	Dark green	Flowers	+	6
	<i>Ixora paludosa</i>	Light green	Flowers	+	2
	<i>Ixora</i> sp.	Light green	Flowers	+	7
	<i>Brugmansia suaveolens</i>	Greenish yellow	Leaves, flowers	-	0
	<i>Aster alpinus</i>	Brown black	Leaves, twigs, flowers	+	5
<i>Macrosiphoniella sanborni</i>	<i>Chrysanthemum</i> sp.	Reddish brown	Leaves, twigs	+	5
<i>Macrosiphum rosae</i>	<i>Rosa indica</i>	Green	Flowers	-	0
<i>Myzus persicae</i>	<i>Brugmansia suaveolens</i>	Greenish yellow	Leaves, flowers	-	0
<i>Neomyzus circumflexus</i>	<i>Cestrum</i> sp.	Light green	Young leaves, flowers	-	0
	<i>Brugmansia suaveolens</i>	Light green	Flowers	-	0
<i>Pentalonia caladii</i>	<i>Caladium</i> sp.	Brown-black	Leaves	+	7
<i>Rhopalosiphum nymphaeae</i>	<i>Canna indica</i>	Green black	Leaves	+	1
<i>Sinemegoura citricola</i>	<i>Dendrobium</i> sp.	Brown	Flowers	-	0
<i>Toxoptera aurantii</i>	<i>Ixora paludosa</i>	Brown black	Flowers	+	5
	<i>Ixora</i> sp.	Brown black	Flowers	+	4
<i>Toxoptera citricidus</i>	<i>Murraya paniculata</i>	Black	Stems	+	6
<i>Toxoptera odinae</i>	<i>Mussaenda frondosa</i>	Reddish-brown	Flowers	+	4

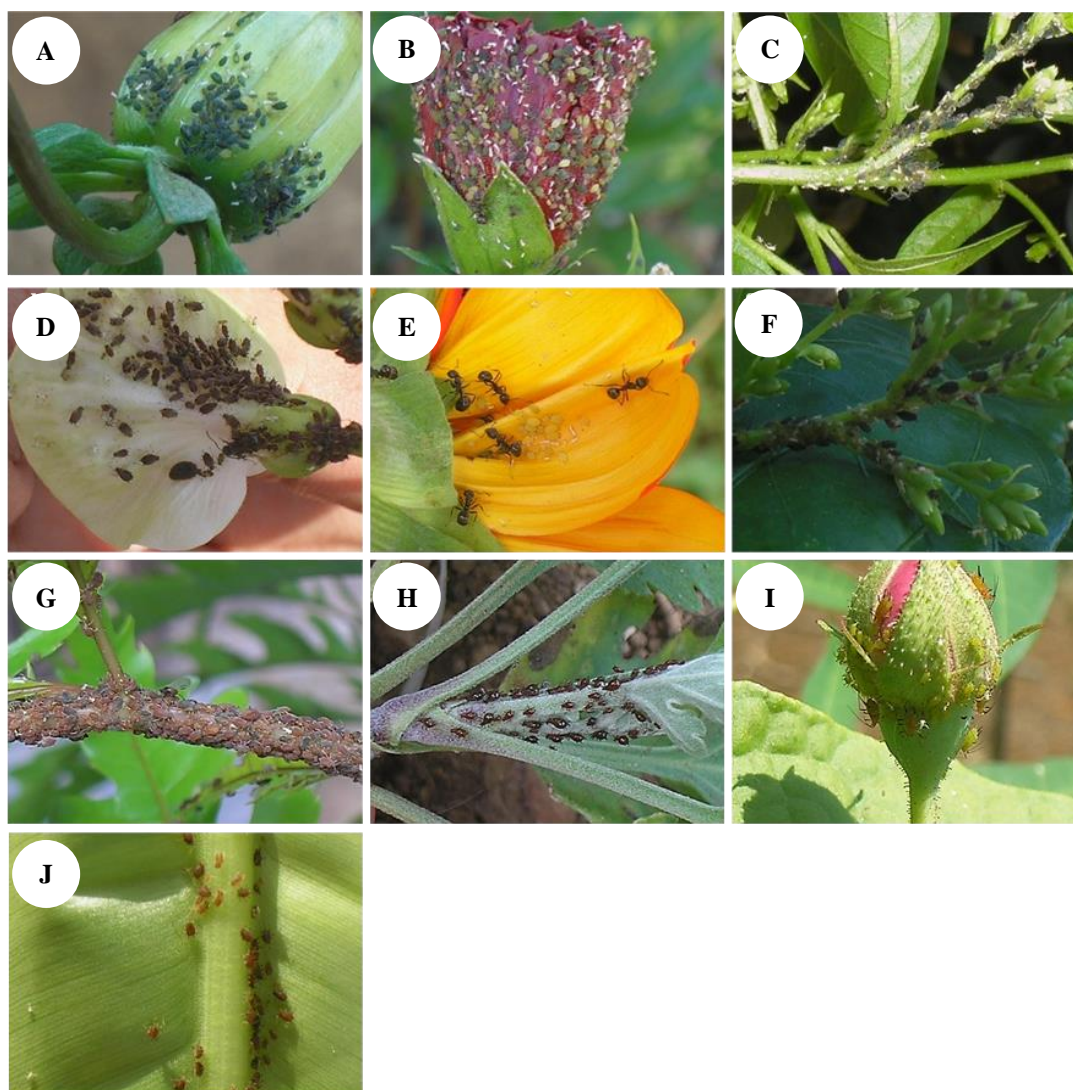
Notes: (+) = present; (-) = absent

## Discussion

In the present study, some aphid species were found on several ornamental plants in Pagar Alam, and the location of aphid colonization on the plants varied. On *Aster alpinus* L., aphids were found to form colonies on the stems or young leaf shoots, and the colonies were relatively large. The color of the aphids was dark brown to black. The colonized plant parts showed symptoms of stunting. The identification results showed that the aphids were *Macrosiphoniella sanborni* Gillette, 1908 associated with ants. On the *Brugmansia suaveolens* (Humb. & Bonpl. ex Willd.) Bercht. & J.Presl, *Myzus persicae* Sulzer, 1776 were found on the undersides of old leaves or leaves that have turned yellow. The colonies were relatively small. The aphids found were green and large bodies. The colonized plant parts did not show any signs of disease. On *Caladium* sp. one species of aphids was found: *Pentalonia caladii* van der Goot, 1917. *Pentalonia caladii* was known and found in taro plants; the aphids formed colonies under the surface of young and older leaves (Bhadra and Agarwala 2014). This study found that the occupied leaf areas did not display severe symptoms; the aphids were yellow-green to dark green. The wingless adult aphids often had a white, flour-like appearance on their bodies. On the *Cananga odorata* (Lam.) Hook.f. & Thomson (*ylang-ylang*), colonies of *Toxoptera aurantii* Boyer de Fonscolombe, 1841 were found on the undersides of the leaves, the shoots, buds, and unopened flower petals. The

*T. aurantii* colonies found were relatively large. Colonized parts, especially shoots, showed signs of stunting. The aphids found were brown to black. The colonies of *T. aurantii* were found to be associated with black ants. Aphids on *Canna indica* L. (Indian shot, African arrowroot) were found to form colonies in the leaf axils and under the leaf surface near the leaf base. The colonies were quite large. The aphids were dark brown to dark red coloring with a medium-sized body and the identification results showed that the aphids were *Rhopalosiphum nymphaeae* Linnaeus, 1761 (Ghosh and Singh 2004). The colonies of *R. nymphaeae* were found to be associated with ants. In the *Catharanthus roseus* (L.) G.Don (periwinkle), *Aphis spiraecola* Patch, 1914 aphids were found. The aphids were yellow-green, sifunculi, and black cauda. The aphids formed colonies on flowers and shoots, and the colonized plant parts showed no disease symptoms. On *Cestrum* sp. (Bastard jasmine), aphids formed colonies on the undersides of young leaves, shoots, and within flower parts, especially between petals or stalks that had not fully bloomed; the colonies were quite large. The body color of aphids was green to dark green, with small to medium-sized bodies. The colonized plant parts, especially leaves, showed stunting symptoms. The identification results showed that the aphids were *Aphis gossypii* Glover, 1877. The aphid colonies found were consistently associated with ants.

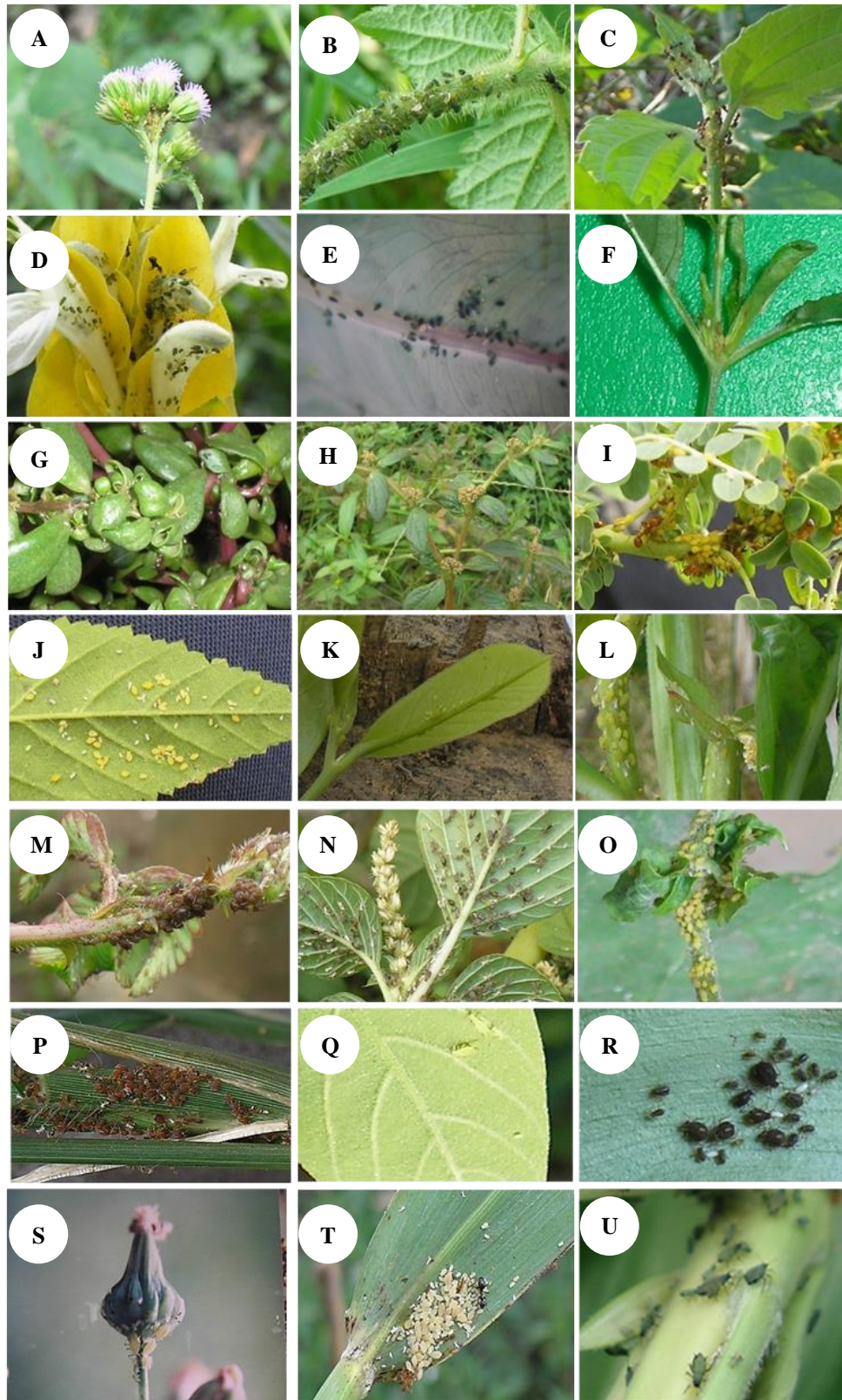




**Figure 1.** Photos showing colonies of different aphid species in ornamental plants: A. *Aphis gossypii* in *Dahlia* sp. flower; B. *Aphis gossypii* in *Hibiscus rosasinensis* flower; C. *Aphis gossypii* in *Cestrum* twig and flower; D. *Aphis craccivora* in *Clitoria ternatea* flower; E. *Aphis glycines* in *Helianthus giganteus* flower; F. *Aphis craccivora* on the *Murayya paniculata* flower; G. *Toxoptera odinae* in the *Mussaenda frondose*; H. *Macrosiphoniella sanborni*. in *Chrysanthemum* sp. Leaves; I. *Macrosiphum rosae* in *Rosa indica* flower; J. *Rhopalosiphum nymphaeae* in *Canna indica* leaves. Chandra Irsan captured all the photos

Aphids on *Clitoria ternatea* L. were found to form colonies on flower parts, flower crowns, stems, and young leaves. The aphids were brown to black. Colonized plant parts, especially shoots and young leaves, showed stunting symptoms. The identification results showed that the aphids were *Aphis craccivora* Koch, 1854. These colonies were consistently associated with ants. The aphids on the *Dahlia* sp. formed colonies on unopened flower buds, with a significant population among the blooming petals. The body color was green to dark green. The identification results showed that the aphids were *A. gossypii*. According to this present study, *Sinemegoura citricola* van der Goot, 1917 colonies were found on the young leaves of *Dendrobium* sp., with the color body of the *S. citricola* aphids were yellow, green to dark green, and the colonized plants showing no disease symptoms, and were associated with ants. On *Duranta* sp., colonies of aphids on the undersides of young leaves, and the colonized plant parts

showed stunting symptoms. The colonies were very large. The aphids were green. The identification results showed that the aphids were *A. gossypii*. The aphid colonies were consistently associated with ants. Furthermore, on the *Helianthus annuus* L., aphid colonies were found between the flower petals. The colonized flowers, especially the crowns, tended to fall off easily. The aphids were green and yellow. The colonies were small. The identification results showed that the aphids were *A. gossypii*. These aphid colonies were associated with ants. Aphid colonies on *Helianthus* sp. were found on the undersides of old leaves. These colonies were small in size. The aphids were green with a medium body size. The colonized plant parts did not show any disease symptoms. The identification results showed that the aphids were *Aphis glycines* Matsumura, 1917. The aphid colonies were not associated with ants. Within the colonies, mummified aphids that Aphidiidae parasitized were found.



**Figure 2.** Aphids found infesting wild plants A. *Aphis gossypii* in *Ageratum conyzoides*; B. *Aphis gossypii* in *Croton hirtus*; C. *Aphis gossypii* in *Eupatorium odoratum*; D. *Aphis gossypii* in *Pachystochys* sp.; E. *Pentalonia caladii* in *Caladium* sp.; F. *Aphis gossypii* in *Alternanthera sessilis*; G. *Aphis gossypii* in *Portulaca oleraceae*; H. *Aphis gossypii* in *Euphorbia hirta*; I. *Aphis spiraeicola* in *Phyllanthus nerruri*; J. *Aphis spiraeicola* in *Sida rhombifolia*; K. *Aphis spiraeicola* in *Bridelia tomentosa*; L. *Aphis spiraeicola* in *Ludwigia peruviana*; M. *A. craccivora* in *Mimosa pudica*; N. *Aphis craccivora* in *Amaranthus viridis*; O. *Aphis glycine* in *Mikania micrantha*; P. *Hysteneura* sp. in *Eleusine* sp.; Q. *Greenidae* sp. in *Bridelia tomentosa*; R. *Hyperomyzus* sp. in *Echinochloa crusgali*; S. *Lipaphis erysimi* in *sonchus arventris*; T. *Rhopalosiphum padi* in *Oryza rufipogon*; U. *Rhopalosiphum maidis* in *Oryza rufipogon*. All the photos were captured by Chandra Irsan



**Table 3.** Species of aphids found in wild (weed or non-weed) plants and their colony locations

Host plant	Weeds or non-weed plants	Aphid species	Colony location
<i>Ageratum conyzoides</i>	Weed	<i>Aphis gossypii</i>	Shoots, young leaves, old leaves, flowers
<i>Alternanthera philoxeroides</i>	Weed	<i>Aphis gossypii</i>	Shoots, buds
<i>Alternanthera sessilis</i>	Weed	<i>Aphis gossypii</i>	Shoots, buds
<i>Amaranthus viridis</i>	Weed	<i>Aphis craccivora</i>	Flowers, shoots, young leaves, old leaves
<i>Blumea lacera</i>	Weed	<i>Lipaphis erysimi</i>	Flowers, shoots, and buds
<i>Bridelia tomentosa</i>	Non-weed	<i>Greenidea</i> sp.	Young leaves
		<i>Aphis spiraeicola</i>	Shoot, young leaves
<i>Croton hirtus</i>	Weed	<i>Aphis gossypii</i>	Flowers, shoots, young leaves, old leaves, young twigs
<i>Cynodon dactylon</i>	Weed	<i>Schizaphis rotundiventris</i>	Flower, flower stalks
<i>Cyperus rotundus</i>	Weed	<i>Schizaphis rotundiventris</i>	Flower, flower stalks, leaf axils
<i>Cyperus compressus</i>	Weed	<i>Schizaphis rotundiventris</i>	Flower, flower stalks, leaf axils
<i>Digitaria ciliaris</i>	Weed	<i>Hysteronura setariae</i>	Flower, flower stalks
<i>Echinocloa crusgali</i>	Weed	<i>Hyperomyzus</i> sp.	Young leaves, old leaves
<i>Ecliptica prostrata</i>	Weed	<i>Aphis gossypii</i>	Shoots, young leaves
<i>Eleusin indica</i>	Weed	<i>Hysteronura setariae</i>	Flower, flower stalks, leaf axils
		<i>Rhopalosiphum maidis</i>	Flower, flower stalks, leaf axils
<i>Emilia sonchifolia</i>	Weed	<i>Aphis gossypii</i>	Flower, flower stalks, shoots
<i>Eragrostis tenella</i>	Weed	<i>Hysteronura setariae</i>	Flower, flower stalks, seeds
<i>Euphorbia hirta</i>	Weed	<i>Aphis gossypii</i>	Young leaves, old leaves
<i>Eupotarium odoratum</i>	Weed	<i>Aphis gossypii</i>	Young leaves, old leaves,
		<i>Aphis glycines</i>	Shoot, young twigs
<i>Hymenochera acutigluma</i>	Weed	<i>Hysteronura setariae</i>	Flowers, flower stalks, leaf axils
<i>Lophatherum gracile</i>	Weed	<i>Hysteronura setariae</i>	Young leaves, old leaves, leaf axils
		<i>Rhopalosiphum maidis</i>	Young leaves, old leaves, leaf axils
<i>Melastoma affine</i>	Non-weed	<i>Aphis gossypii</i>	Shoots, young leaves
<i>Mikania micrantha</i>	Weed	<i>Aphis gossypii</i>	Shoots, young leaves, old leaves
		<i>Aphis glycines</i>	Shoot, young twig
<i>Mimosa invisa</i>	Weed	<i>Aphis craccivora</i>	Shoots, pods
<i>Mimosa pudica</i>	Weed	<i>Aphis craccivora</i>	Shoots, pods, flowers
<i>Mimosa vigra</i>	Non-weed	<i>Aphis craccivora</i>	Shoots, pods
<i>Oryza rufipogon</i>	Weed	<i>Rhopalosiphum padi</i> ,	Old leaves, young leaves (shoot), leaf axils
	Weed	<i>Rhopalosiphum maidis</i>	Old leaves, young leaves (shoot), leaf axils
<i>Oxonopus compressus</i>	Weed	<i>Hysteronura setariae</i>	Flowers, flower stalks, leaf axils
<i>Paspalum conjugatum</i>	Weed	<i>Hysteronura setariae</i>	Flowers, flower stalks, seeds
<i>Phyllanthus neruri</i>	Weed	<i>Aphis spiraeicola</i>	Shoot, young leaves, old leaves, young twigs, petioles
<i>Portulaca oleraceae</i>	Weed	<i>Aphis craccivora</i>	Shoots, young leaves, flowers
<i>Physalis angulata</i>	Weed	<i>Aphis craccivora</i>	Shoots, young leaves, old leaves
	Weed	<i>Aphis gossypii</i>	Shoots, young leaves, old leaves
<i>Rorippa indica</i>	Weed	<i>Lipapis erysimi</i>	Flowers, fruits, shoots, young leaves
<i>Sida rhombifolia</i>	Weed	<i>Aphis gossypii</i>	Shoots, young leaves, old leaves, fruit/seeds
<i>Sonchus arvensis</i>	Weed	<i>Lipapis erysimi</i>	Young leaves, fruit stalks, flowers, fruits

On *Hibiscus rosa-sinensis* L., aphids ranging from yellow to dark green were found. The aphids formed colonies on flower buds, unopened flower crowns, and the undersides of aging leaves. The colonies grew to be very large. The identification results showed that the aphids were *A. gossypii*. The aphid colonies were consistently associated with ants. Two types of aphids were found on the flowering plant *Ixora paludosa* (Blume) Kurz. First, the aphids formed colonies on the undersides of young leaves that were still red or light green and sometimes on flower stalks that had not yet bloomed. The occupied plant parts showed symptoms such as stunted leaf growth, leaf shrinkage, necrotic spots on the leaf surface, and slightly downward-curved leaf edges. The upper leaf surface looked wet and sticky, like sugar. The aphids had yellow, green, or slightly dark green bodies, with some wingless

adults having a powdery white upper surface. The identification results showed that the aphids were *A. gossypii* almost always associated with ants. The second type of aphids on *Ixora paludosa* formed colonies under the surface of young and older leaves. The colonies could also be found on newly emerging flowers and leaves. The plant parts occupied by these aphids did not show obvious signs of illness. These aphids were dark red to black, with once-branched stigma and venation in their black wings. The identification results showed that the aphids were *T. aurantii*. These aphids were also associated with ants. Moreover, two forms of aphids were discovered in *Ixora* sp. flower plants. These aphids occupied the shoots, young leaves, and unopened flowers; the affected plant parts did not show obvious symptoms. The aphids exhibited colors ranging from yellow and green to a slightly darker green.

**Table 4.** Aphid species were recorded in wild plants, and the presence of ants in the plant parts colonized

Aphid species	Wild plants	Aphids life color	Plant parts colonized	Ant attendance	Total individual of ant
<i>Aphis gossypii</i>	<i>Ageratum conyzoides</i>	Light green	Shoots, young leaves, old leaves, flowers	+	5
	<i>Alternanthera philoxeroides</i>	Light green	Shoots, buds	+	3
	<i>Alternanthera sessilis</i>	Light green	Shoots, buds	-	0
	<i>Croton hirtus</i>	Dark green	Flowers, shoots, young leaves, old leaves, young twigs	+	7
	<i>Ecliptica prostrata</i>	Green	Shoots, young leaves	+	5
	<i>Emilia sonchifolia</i>	Green	Flower, flower stalks, shoots	+	6
	<i>Euphorbia hirta</i>	Light green	Young leaves, old leaves	+	7
	<i>Eupatorium odoratum</i>	Light green	Young leaves, old leaves, young twigs	+	8
	<i>Melastoma affine</i>	Light green	Shoots, young leaves	+	8
	<i>Mikania micrantha</i>	Light green	Shoots, young leaves, old leaves	+	9
	<i>Physalis angulata</i>	Yellowish green	Shoots, young leaves, old leaves, fruit/seeds	+	10
	<i>Sida rhombifolia</i>	Yellowish green		-	0
<i>Aphis craccivora</i>	<i>Amaranthus viridis</i>	Black	Flowers, shoots, young leaves, old leaves	+	3
	<i>Mimosa invisa</i>	Black	Shoots, pods	+	2
	<i>Mimosa pudica</i>	Black	Shoots, pods, flowers	+	3
	<i>Mimosa vigra</i>	Black	Shoots, pods	+	4
	<i>Portulaca oleraceae</i>	Black	Shoots, young leaves, flowers	+	7
	<i>Physalis angulata</i>	Black	Shoots, young leaves, old leaves	+	4
<i>Aphis glycines</i>	<i>Eupatorium odoratum</i>	Greenish yellow	Young leaves, old leaves, young twigs	+	6
	<i>Mikania micrantha</i>	Light green	Shoots, young leaves, old leaves	+	4
<i>Aphis spiraecola</i>	<i>Phyllanthus neruri</i>	Greenish yellow	Shoot, young leaves, young twigs, petioles	+	5
	<i>Bridelia Tomentosa</i>	Greenish yellow	Shoot, young leaves	+	2
<i>Greenidea</i> sp.	<i>Bridelia Tomentosa</i>	Greenish yellow	Young leaves	-	0
<i>Hystroneura setariae</i>	<i>Digitaria ciliaris</i>	Reddish-brown	Flower, flower stalks	+	3
	<i>Eleusin indica</i>	Reddish-brown	Flower, flower stalks, leaf axils	+	4
	<i>Eragrostis tenella</i>	Reddish-brown	Flower, flower stalks, seeds	+	4
	<i>Hymenochera acutigluma</i>	Reddish-brown	Flowers, flower stalks, leaf axils	+	3
	<i>Lophatherum gracile</i>	Reddish-brown	Young leaves, old leaves, leaf axils	+	6
	<i>Oxonopus compressus</i>	Reddish-brown	Flower, flower stalk, leaf axils	+	3
	<i>Paspalum conjugatum</i>	Reddish-brown	Flower, flower stalk, seeds	+	6
	<i>Echinocloa crusgali</i>	Black	Young leaves, old leaves	-	0
<i>Lipaphis erysimi</i>	<i>Blumea lacera</i>	Whitish green	Flowers, shoots, and buds	+	4
	<i>Rorippa indica</i>	Whitish green	Flower, fruit, shoots, young leaves	+	4
	<i>Sonchus arvensis</i>	Whitish green	Young leaves, fruit stalks, flowers, fruit	+	5
	<i>Eleusin indica</i>	Green	Flower, flower stalks, leaf axils	+	3
<i>Rhopalosiphum maidis</i>	<i>Lophatherum gracile</i>	Green	Young leaves, old leaves, leaf axils	+	4
	<i>Oryza rufipogon</i>	Green	Old leaves, young leaves (shoot), leaf axils	-	0
<i>Rhopalosiphum padi</i>	<i>Oryza rufipogon</i>	Whitish green	Old leaves, young leaves (shoot), leaf axils	+	4
<i>Schizaphis rotundiventris</i>	<i>Cynodon dactylon</i>	Green	Flowers, flower stalks	+	6
	<i>Cyperus compressus</i>	Green	Flowers, flower stalks, leaf axils	+	4
	<i>Cyperus rotundus</i>	Green	Flowers, flower stalks, leaf axils	+	4

Notes: (+): present, (-): absent



Sometimes, the upper surface of the wingless imago's body appeared white, resembling flour. The identification results showed that these aphids were *A. gossypii*. These aphid colonies were almost always associated with ants. Another species of aphids formed colonies on flower stalks that had not yet bloomed and on newly emerging shoots or leaves. The presence of these aphids on the plant did not induce plant disease symptoms. The aphids were yellow or yellowish green, with black cauda and siphunculi. Their bodies were very small to small. The identification results showed that the aphids were *A. citricola*. The colonies of *A. citricola* were also frequently found in association with ants. Two types of aphids were found on *Mussaenda frondosa* L., each forming colonies in different locations. The first type formed colonies on young leaves, shoots, and flowers. The plant parts they occupied showed no obvious disease symptoms. The identification results showed that the aphids were *Toxoptera odinae* van der Goot, 1917. The aphids were yellow, green, and dark green (Blackman et al. 2011). The second type of aphids formed colonies on the stems or young twigs, appearing densely clustered as if piled up. The aphid colonies could also be found on young leaves, shoots, and within flower parts. The plant parts they infested showed no signs of diseases. The aphids were yellow or yellow-green, with black cauda and siphunculi. They had tiny to small bodies. The identification results showed that the aphids were *A. citricola*. Many aphid species infest various ornamental plants because these insects are attracted to such plants due to the rich nutrient content in the plant sap (Braham et al. 2023).

The results showed that 34 species of wild plants, including weeds, were growing in the yard colonized by aphids. This indicated that multiple species of aphids colonized various host plants. The aphid species colonizing these plants were generally consistent within the same taxon. *Ageratum conyzoides* L. was infested by *A. gossypii*. These aphids formed colonies on the flower sections, shoots, lower surfaces of young leaves, or leaves turning yellow. The aphids were green, yellow-green to dark green, often forming large colonies. *Alternanthera philoxeroides* (Mart.) Griseb., or alligator grass, was also colonized by *A. gossypii*. Small colonies were found on shoots or stems. These aphids had small bodies and were green, ranging from yellow-green to dark green. *Alternanthera sessilis* (L.) R.Br. ex DC. was colonized by *A. gossypii*, forming colonies on shoots, flowers, and fruit. The colonies were typically large and often associated with tiny brown ants. *Amaranthus viridis* Linnaeus was infested by *A. craccivora*. These aphids established colonies on shoots, flowers, and young and old leaves. They were dark brown to black, with shiny black wingless imagoes. Colonies of these aphids were associated with both black and red ants. *Blumea lacera* (Burm.fil.) DC. was colonized by *Lipaphis erysimi* Kaltenbach, 1843. These aphids were bright green and of medium size. The colonies formed on flowers, flower stalks, and the undersides of the leaves at the top. The aphid colonies were not associated with ants. *Croton hirtus* L'Hér., or fire grass, was infested by *A. gossypii*; the aphids were yellow-green to dark green. The colonies were found on the stems, leaves, buds, and flowers, often

forming large colonies. *Cynodon dactylon* (L.) Pers. or Bermuda grass was colonized by *Schizaphis rotundiventris* Signoret, 1860. The aphids colonized the flowers, flower stalks, and sometimes the plant leaf axils. Small colonies were formed. The aphids were brown to reddish brown. They were associated with ants. *Cyperus rotundus* L., or nut grass, was infested by *S. rotundiventris* aphids. The colonies were found on flower stalks, flowers, and leaf axils. The colonies were quite large and associated with both black and red ants. The aphids were dark brown in color. *Cyperus compressus* L., or grass puzzle, was colonized by *S. rotundiventris* aphids, forming colonies in the flowers, flower stalks, and sometimes in the axils and leaves of the shoots or buds. Small colonies were observed. *Digitaria ciliaris* (Retz.) Koeler was infested by *Hysteroneura setariae* Thomas 1878 aphids, with small colonies scattered on the flowers and flower stalks. These aphids were light brown to brown in color. *Echinochloa crus-galli* (L.) P.Beauv., or water hyacinth plants, were colonized by *Hiperomyzus* sp. aphids. These aphids were dark brown to black and formed large colonies on the undersides of both young and old leaves. The aphid colonies were never found in association with ants. *Eclipta prostrata* (L.) L., or urang-aring, was colonized by *A. gossypii*, forming small colonies on the shoots and flowers. The aphids were bright green to blackish green. The aphid colonies were also consistently associated with ants. *Eleusine indica* (L.) Gaertn. was colonized by two species of aphids: *Hysteroneura setariae* Thomas, 1878 and *Rhopalosiphum maidis* Fitch, 1856. *Hysteroneura setariae* formed colonies in flower parts, flower stalks, and leaf axils, resulting in large colonies. *Hysteroneura setariae*'s body color ranged from red-brown to dark brown. The colonies were consistently associated with ants. The aphids of *R. maidis* formed colonies in the leaf axils and undersides of leaves and leaf shoots that had not yet opened. The colonies were not densely packed. The leaf aphids of *R. maidis* were green in color, with distinct black siphunculi and cauda. These aphids had relatively large bodies with a slightly elongated shape. *Rhopalosiphum maidis* colonies were always associated with ants. The plant *Emilia sonchifolia* (L.) DC. ex Wight, characterized by its purple flowers, was colonized by *A. gossypii*; the aphids were yellow to green in color. The colonies formed near flowers, flower stalks, and shoot leaves. *Eragrostis tenella* was infested by *H. setariae* aphids. The aphids were brown to red-brown. Small colonies formed on flowers near the seeds, with groups of aphids surrounding the plant's seeds. The aphids of *H. setariae* were consistently associated with ants. *Euphorbia hirta* L., or wart grass, was colonized by *A. gossypii*. The aphids formed colonies on the undersides of leaves, resulting in stunted growth of the leaves. The aphids were yellow to dark green in color. *Aphis gossypii* colonies on *E. hirta* plants were consistently associated with ants. *Eupatorium odoratum* L. was colonized by *A. gossypii* and *A. citricola*. *A. gossypii* formed colonies in the buds, young leaves, old leaves, and young twigs. Young leaves colonized by *A. gossypii* became stunted with an irregular shape. *Aphis gossypii* found in this plant showed yellow-green to dark-green

body color. The colonies of *A. citricola* formed on the young twigs near the shoots, with these aphids displaying yellow-green coloration and having black siphunculi and cauda. Aphid colonies of *A. gossypii* and *A. citricola* on *E. odoratum* plants were associated with either black or red ants. *Hymenachne acutigluma* (Steud.) Gilliland, or hair axis, was colonized by *H. setariae*, which formed colonies on the flower stalks and flowers. The colonized parts of the plants did not display any noticeable symptoms. *Lagerstromia* sp., or *kenidai*, was infested by *Greenidae* sp. These aphids had bright green bodies and distinctive elongated siphunculi with thorns. The aphids formed colonies on the undersides of leaves, especially on young leaves. The colonized leaves did not show any disease symptoms. *Lophatherum gracile* Brongn. or bamboo grass plants, were colonized by two species of aphids: *H. setariae* and *R. maidis*. The aphids of *H. setariae* formed colonies on the undersides of leaves, leaf shoots, and leaf axils. The colonized leaves did not show any disease symptoms. *Hystroeneura setariae* aphids were brown to red-brown. *Rhopalosiphum maidis* aphids also formed colonies on the undersides of leaves, but the colonies were small. *Rhopalosiphum maidis* aphids were green to bright green, with black siphunculi and cauda. It was possible for colonies of the two species of aphids on *L. gracile* to mix. In addition, *Melastoma affine* D. Don was colonized by *A. gossypii*. The colonies formed on shoots, particularly near newly emerging shoots and newly emerging fruits and flowers. The body color of aphids ranged from yellow to green. The colonized plant parts did not show any disease symptoms. *Mikania micrantha* Kunth was colonized by *A. gossypii* and *Aphis glycines* Matsumura, 1917. *Aphis gossypii* formed colonies on the shoots, especially on the undersides of the leaves, resulting in stunted and curled leaves. *Aphis glycines* formed colonies on the branches. The colonies were densely populated. *Aphis glycines* aphids were light green to green in color. The colonized plant parts became distorted. The two species of aphids could mix to form a single colony. *Mimosa invisa* Mart. ex Colla (cater-grass) was colonized by *A. craccivora*. The aphids of *A. craccivora* on *M. invisa* plants formed colonies only on the shoots with small colonies. The aphids appeared dark black with wingless imagoes. *Mimosa pudica* L. was observed to be colonized by *A. craccivora*. The aphids formed colonies on shoots, especially young shoots, and occasionally on flowers and pods. The aphids were black and of medium size, resulting in stunted growth of the colonized plant parts. The colonies were quite large. *Mimosa pigra* L. was colonized by *A. craccivora*. The colonies of aphids occupied the pods and shoots with small colonies. The nymphs of aphids were black, and wingless adults were shiny black. The colonized plant parts did not show any disease symptoms. *Oryza rufipogon* Griff. was colonized by two species of aphids: *Rhopalosiphum padi* and *R. maidis*. Both aphids colonized the same plant parts, namely the unopened leaves and the leaf axils with large colonies. The two species could be distinguished by their body color. *Rhopalosiphum maidis* appeared green with black siphunculi and cauda, while *Rhopalosiphum padi* Linnaeus, 1758 appeared white. The colonies of *R. maidis*

and *R. padi* in *O. rufipogon* plants were associated with the presence of red ants. *Axonopus compressus* (Sw.) P. Beauv., or *pait* grass, was colonized by *H. setariae* aphids. The colonies occupied flowers, flower stalks, seeds, and sometimes the leaf axils. The aphids were brown to dark brown. Small colonies were formed, and they were also consistently associated with ants. *Paspalum conjugatum* was colonized by *H. setariae* aphids. The colonies occupied flower parts, especially the seeds and flower stalks. Aphids had brown to dark brown bodies. *Phylanthus neruri* L. was colonized by *A. citricola*. The colonies formed on the shoots and the undersides of leaves and petioles. The colonized parts became distorted, stunted, and wrinkled. The aphids had yellow bodies with black siphunculi and cauda; the colonies formed were large. *Portulaca oleracea* L. plants were colonized by *A. craccivora*. The aphids of *A. craccivora* in *P. oleraceae* plants formed colonies on the undersides of leaves, especially young leaves, shoots, and flowers. The colonized plant parts became stunted, and leaf edges curled downward. The aphids had dark brown to black bodies, with wingless imagoes that appeared glossy black. *Physalis angulata* plants were colonized by *Aphis craccivora*. The aphids had dark green to black bodies, with glossy black wingless imagoes. *Aphis craccivora* formed colonies on the shoots or near the leaf buds. The colonized plant parts did not show disease symptoms. *Rorippa indica* (L.) Hiern, or mustard land, was colonized by *L. erysimi*. The colonies formed on the flowers, fruits, flower stalks, and the lower leaf's surface. The colonized plant parts showed symptoms such as curling and stunting. *Sida rhombifolia* L., or cacabea, was colonized by *A. gossypii*. The aphids had green-yellow to green body colors. The colonies formed on the surface of lower leaves, stalks, and flower petals. The colonized plant parts, especially the shoots, showed curling, and the leaf edges curled downward. *Sonchus arvensis* L. plants were colonized by *L. erysimi*. The aphids had green to whitish green body colors, and the colonies formed on flower stalks, under petals, and on young shoots or leaves. The colonized plant parts became stunted over time.

In general, aphids observed on ornamental and wild plants formed colonies. The colonized plant parts typically displayed typical damage symptoms, but some did not show any symptoms at all. Generally, the plants' symptoms due to aphid colonies were relatively the same, such as stunted growth, abnormal shape, and stunted or curly leaves. These characteristic symptoms serve as indicators of aphid infestations. However, some plants or plant parts did not show symptoms when colonized by aphids. This condition occurred because the colonized parts had reached maximum growth or development. It indicated that the colonized part was not currently undergoing a growth phase. The colonies that did not induce symptoms typically occurred when the colonized leaves had reached their maximum growth or when the leaves and plant parts were old. Furthermore, the old leaves or twigs might not show the typical symptoms associated with aphid infestations. The plant parts exhibiting characteristic symptoms when colonized by aphids also often experienced a cessation in

growth due to the piercing by the aphids. In contrast, the areas surrounding the puncture site continued growing, resulting in some parts developing ordinary while others became stunted (Pettersson et al. 2017). This condition could lead to bending shoots or young stems, curling leaves, downward curling of leaf edges, or stunted leaf growth. In this observation, monocot plants or groups of grasses with narrow leaves generally did not display any distinctive symptoms when colonized by aphids. This might be because the growth or development of their leaves differed from that of dicot plants. Therefore, the presence of aphids in monocot plants was often easier to recognize through the presence of ants. If a plant was found to have a significant number of ants, there was a possibility that aphids had colonized the plant (Tegelaar et al. 2012). Therefore, the presence of ants could serve as an indicator of the aphid colonies. According to this study, ants were present in some aphid colonies from the subfamily Aphidinae, while the ants were absent in some aphid colonies from the macrosiphini subfamily. The bodies of aphids from the subfamily Aphidinae are relatively small and have short sifunculi. On the other hand, aphids, which have large bodies and relatively long sifunculi, are never visited by ants. This happens because long sifunculi are reported to disturb ants, so the ants don't like to come close. Additionally, large aphids and long sifunculi generally do not produce honeydew, so ants do not want to come close.

The absence of ants in aphid colonies could be because the colonies have just formed or the population is still low (Kummel et al. 2013). Aphids colonized flowers because they may offer an accessible and rich food source, sugary plant sap found in new growth or reproductive plant parts. Flowers contain a nutrient-rich nature and easy access to sap; therefore, aphids were attracted to flower saps. In addition, some aphid species were drawn to certain colors (Jakubczyk et al. 2022). Herbs served as an alternative host for aphids in this present study. Aphids consume sugar-rich liquid in plants, known as sap. Aphids considered herbs and other green vegetation as abundant food sources. Aphids utilize needle-like mouthparts to penetrate plant tissues and access this fluid (Brožek et al. 2015). Several aphids colonized herbs such as Indian mustards, *L. erysimi*, and *M. persicae*, the most devastating insects, infesting leaves, stems, and floral parts (Jayaswal et al. 2022). Due to a symbiotic relationship, the prevalence of aphids and ants was frequently correlated. Aphids produced a delicious substance known as honeydew as a waste product, which ants found highly attractive food sources (Nelson and Mooney 2022). The honeydew contained abundant sugars extracted by aphids from the plant juice (Zheng et al. 2022). Ants were drawn to this nutrient-rich food source and would often farm aphids for it. In exchange for honeydew, ants protected aphids from other insects and predators, such as ladybugs, lacewing larvae, and parasitic wasps (Karami-Jamour et al. 2018). Certain ant species would transport aphids to new host plants for improved foraging opportunities, ensuring that aphids had a continuous food source (Giannetti et al. 2021). Honeydew not only nourished the ant colony, but its high sugar content also supported the development of their fungus

farms (in certain species) and provided energy for the growth of their progeny (Biedermann and Vega 2020). Ornamental plants and also weeds are generally grown with simple maintenance and are usually pesticides-free. The ecological habitat of ornamental plants and weeds is assumed to be the same. Therefore, many species of aphids found on ornamental plants were also found on weeds.

In conclusion total of 15 species of aphids were found in ornamental plants, *A. craccivora*, *A. citricola*, *A. glycines*, *A. gossypii*, *A. solani*, *M. sanborni*, *M. rosae*, *M. persicae*, *N. circumflexus*, *P. caladii*, *R. nymphaeae*, *S. citricola*, *T. aurantii*, *T. citricidus*, *T. odinae*. A total of 11 species of aphids are found in weeds, *A. gossypii*, *A. craccivora*, *A. glycines*, *A. citricola*, *Greenidea* sp., *H. setariae*, *Hiperomyzus* sp., *L. erysimi*, *R. maidis*, *R. padi*, *S. rotundiventris*.

## ACKNOWLEDGEMENTS

The authors thank Universitas Sriwijaya, Indonesia that supported this research. This research is a part of contract number 0188/UN9.3.1/SK/2023, 18 April 2023, with the chairman Chandra Irsan.

## REFERENCES

- Bass C, Puinean AM, Zimmer CT, Denholm I, Field LM, Foster SP, Gutbrod O, Nauen R, Slater R, Williamson MS. 2014. The evolution of insecticide resistance in the peach potato aphid, *Myzus persicae*. *Insect Biochem Mol Biol* 51: 41-51. DOI: 10.1016/j.ibmb.2014.05.003.
- Bhadra P, Agarwala BK. 2014. On the morphological and genotypic variations of two congeneric species of banana aphid *Pentalonia* (Homoptera : Aphididae) from India. *Adv Life Sci* 2 (3): 75-81. DOI: 10.5932/j.als.20120203.06.
- Biedermann PHW, Vega FE. 2020. Ecology and evolution of insect-fungus mutualisms. *Ann Rev Entomol* 65: 431-55. DOI: 10.1146/annurev-ento-011019-024910.
- Blackman RL, Eastop VF. 2008. Aphids on The World's Herbaceous Plants And Shrubs 2 Volume Set. John Wiley & Sons, Hoboken, New Jersey.
- Blackman RL, Eastop VF. 2017. Taxonomic Issues. CABI, Wallingford, UK. DOI: 10.1079/9781780647098.0001.
- Blackman RL, Sorin M, Miyazaki M. 2011. Sexual morphs and colour variants of *Aphis* (Formerly Toxoptera) Odinae (Homoptera, Aphididae) in Japan. *Zootaxa* 3110 (1): 53-60. DOI: 10.11646/zootaxa.3110.1.5.
- Braham M, Boulahia-kheder S, Kahia M, Nouira. S 2023. Aphids and citrus responses to nitrogen fertilization. *J Saudi Soc Agric Sci* 22 (6): 374-83. DOI: 10.1016/j.jssas.2023.03.003.
- Brožek J, Mróz E, Wylęzek D, Depa Ł, Węgiełek P. 2015. The structure of extremely long mouthparts in the aphid genus *Stomaphis* Walker (Homoptera: Sternorrhyncha: Aphididae). *Zoomorphology* 134: 431-45. DOI: 10.1007/s00435-015-0266-7.
- Cao HH, Zhang ZF, Wang XF, Liu TX. 2018. Nutrition versus defense : Why *Myzus persicae* (Green peach aphid) prefers and performs better on young leaves of cabbage *PloS One* 13 (4): 1-16. DOI: 10.1371/journal.pone.0196219.
- Clarke R, Kehoe MA, Broughton S, Jones RAC. 2020. Host plant affiliations of aphid vector species found in a remote tropical environment. *Virus Res* 281: 197934. DOI: 10.1016/j.virusres.2020.197934.
- Ertunc F. 2020. Emerging plant viruses. Emerging and Reemerging Viral Pathogens. Academic Press, Cambridge, Massachusetts. DOI: 10.1016/B978-0-12-819400-3.00046-6.

- Gadhavé KR, Gautam S, Rasmussen DA, Srinivasan R. 2020. Aphid transmission of potyvirus: The largest plant-infecting RNA virus genus. *Viruses* 12 (7): 773. DOI: 10.3390/v12070773.
- Ghosh S, Singh R. 2004. Aphids on medicinal plants in North East India (Insecta : Homoptera : Aphididae). *Rec Zool Surv India* 102 (1-2): 169-186. DOI: 10.26515/rzsi/v103/i1-2/2004/159495.
- Giannetti D, Mandrioli M, Schifani E, Castracani C, Spotti FA, Mori A, Grasso DA. 2021. First report on the acrobat ant *crematogaster scutellaris* storing live aphids in its oak-gall nests. *Insects* 12 (2): 108. DOI: 10.3390/insects12020108.
- Jakubczyk K, Koprowska K, Gottschling A, Janda-Milczarek K. 2022. Edible flowers as a source of dietary fibre (Total, Insoluble and Soluble) as a potential athlete's dietary supplement. *Nutrients* 14 (12): 2470. DOI: 10.3390/nu14122470.
- Jayaswal D, Mainkar P, Kumar K, Agarwal Y, Prabha R. 2022. Pyramiding and evaluation of segregating lines containing lectin and protease inhibitor genes for aphid resistance in *Brassica juncea*. *Indian J Biochem Biophys* 59 (8): 800-807. DOI: 10.56042/ijbb.v59i8.62319.
- Jones RAC. 2022. Alteration of plant species mixtures by virus infection: Managed pastures the forgotten dimension. *Plant Pathol* 71 (6): 1255-81. DOI: 10.1111/ppa.13571.
- Jousselin E, Genson G, Coeur d'acie A. 2010. Evolutionary lability of a complex life cycle in the aphid genus *Brachycaudus*. *BMC Evol Biol* 10 (1): 1-15. DOI: 10.1186/1471-2148-10-295.
- Kallas J. 2010. *Edible Wild Plants*. Gibbs Smith, Layton, Utah.
- Karami-Jamouri T, Mirmoayedi A, Zamani A, Khajehzadeh Y. 2018. The impact of ant attendance on protecting *Aphis gossypii* against two aphidophagous predators and its role on the intraguild predation between them. *J Insect Behav* 31: 222-39. DOI: 10.1007/s10905-018-9670-4.
- Kennedy JS, Stroyan HLG. 1959. Biology of aphids. *Ann Rev Entomol* 4 (1): 139-60. DOI: 10.1146/annurev.en.04.010159.001035.
- Kumar S, Bhowmick MK, Ray P. 2021. Weeds as alternate and alternative hosts of crop pests. *Indian J Weed Sci* 53 (1): 14-29. DOI: 10.5958/0974-8164.2021.00002.2.
- Kummel M, Brown D, Bruder A. 2013. How the aphids got their spots: predation drives self-organization of aphid colonies in a patchy habitat. *Oikos* 122 (6): 896-906. DOI: 10.1111/j.1600-0706.2012.20805.x.
- Liu XD, Xu TT, Lei HX. 2017. Refuges and host shift pathways of host-specialized aphids *Aphis gossypii*. *Sci Rep* 7 (1): 1-9. DOI: 10.1038/s41598-017-02248-4.
- Maharani Y, Hidayat P, Rauf A, Maryana N. 2018. Short Communication: New records of aphid species subfamily Aphidinae (Hemiptera: Aphididae) in West Java, Indonesia. *Biodiversitas* 19 (2): 460-65. DOI: 10.13057/biodiv/d190219.
- Meuninck J. 2023. *Basic Illustrated Edible Wild Plants and Useful Herbs*. Rowman & Littlefield, Lanham, Maryland, US.
- Mo, Carmen, and Angela M. Smilanich. 2023. Feeding on an exotic host plant enhances plasma levels of phenoloxidase by modulating feeding efficiency in a specialist insect herbivore. *Front Physiol* 14: 1-10. DOI: 10.3389/fphys.2023.1127670.
- Naidu VSGR. 2012. *Hand Book on Weed Identification*. Directorate of Weed Science Research, Jabalpur, India.
- Nelson AS, Mooney KA. 2022. The evolution and ecology of interactions between ants and honeydew-producing hemipteran insects. *Ann Rev Ecol Syst* 53: 379-402. DOI: 10.1146/annurev-ecolsys-102220-014840.
- Pettersson J, Tjallingii WF, Hardie J. 2017. Host-plant selection and feeding. *Aphids As Crop Pests*. CABI, Wallingford, UK. DOI: 10.1079/9781780647098.0173.
- Singh, Rajendra, and Garima Singh. 2021. *Aphids. Polyphagous Pests of Crops*. Springer, Singapore. DOI: 10.1007/978-981-15-8075-8\_3.
- Tegelaar K, Hagman M, Glinwood R, Pettersson J, Leimar O. 2012. Ant-aphid mutualism: The influence of ants on the aphid summer cycle. *Oikos* 121 (1): 61-66. DOI: 10.1111/j.1600-0706.2011.19387.x.
- Yamamoto T, Hattori M, Itino T. 2020. Seasonal migration in the aphid genus *Stomaphis* (Hemiptera: Aphididae): Discovery of host alternation between woody plants in subfamily Lachninae. *J Insect Sci* 20 (5): 1-10. DOI: 10.1093/jisesa/ieaa103.
- Zheng Z, Zhao M, Zhang Z, Hu X, Xu Y, Wei C. 2022. Lactic acid bacteria are prevalent in the infrabuccal pockets and crops of ants that prefer aphid honeydew. *Front Microbiol* 12 (1): 1-17. DOI: 10.3389/fmicb.2021.785016.