

LIST OF CONTENT

Impact of Sulphur Content on Coal Quality at Delta Plain Depositional Environment: Case study in Geramat District, Lahat Regency, South Sumatra

Siska Linda Sari, Mutia Armilia Rahmawati, Alan Triyoga, Idar Wati
page 183

Geochemical Characteristics of Metamorphic Rock-Hosted Gold Deposit At Onzon-Kanbani Area, Central Myanmar

Aung Tay Zar, I Wayan Warmada, Lucas Donny Setijadi, Koichiro Watanabe
page 191

Characterization of Coal Quality Based On Ash Content From M2 Coal-Seam Group, Muara Enim Formation, South Sumatra Basin

Frillia Putri Nasution, Stevanus Nalendra
page 203

The Coherency and Correlation between Sea Surface Temperature and Wind Velocity in Malacca Strait: Cross Wavelet Transform and Wavelet Coherency Application

Hanah Khoirunnisa, Ulung Jantama Wisna, Muhammad Zainuddin Lubis
page 210

The Metamorphic Rocks-Hosted Gold Mineralization At Rumbia Mountains Prospect Area In The Southeastern Arm of Sulawesi Island, Indonesia

Hasria, Arifudin Idrus, I Wayan Warmada
page 216

Mataloko Geothermal Power Plant Development Strategy in order to Maintain The Sustainability of Supply and Demand Electric Energy in Kupang, East Nusa Tenggara (A System Dynamics Framework)

Addin Aditya
page 224

REVIEW ARTICLE

Review: Seabed Detection Using Application Of Image Side Scan Sonar Instrument (Acoustic Signal)

Muhammad Zainuddin Lubis, Husnul Kausarian, Wenang Anurogo
page 230

(Journal of Geoscience, Engineering, Environment, and Technology)

Publish periodically four times annually

Scope of Journal

Paper covering the following aspects of Geology, Earth and Planetary Science, Engineering, Environment, and Technology

Address of Secretariat and Paper Submitting

Jl. Kaharuddin Nasution No 113 Marpoyan Damai
Pekanbaru, Riau 28284 Phone.(0761) 72126 , Fax. 0761-674834
e-mail: jgeet@journal.uir.ac.id; web: <http://journal.uir.ac.id/index.php/JGEET>

EXECUTIVE EDITORIAL ADVISOR

Prof. Josaphat Tetuko Sri Sumantyo, Ph.D (Japan)
Prof. Mega F. Rosana, Ph.D (Indonesia)
Prof. Dr. Abdul Rahim Samsudin (Malaysia)
Prof. Dr. H. Detri Karya, S.E, M.A (Indonesia)
Prof. Dr. Ir. H. Sugeng Wiyono, MMT.

EDITOR IN CHIEF

Dr. Eng. Husnul Kausarian B.Sc.(Hons), M.Sc. (Indonesia)

JOURNAL MANAGER

Catur Cahyaningsih B.Sc (Hons) M.Sc.(Indonesia)
Tinggi Choanji S.T, M.T (Indonesia)

EDITORIAL MEMBER

Dr. Eng. Takahiro Miyazaki (Japan)
Dr. Evizal Abdul Kadir S.T., M.Eng (Indonesia)
Dr. Mursyidah, M.Sc. (Indonesia)
Dr. Anas Puri S.T, M.T (Indonesia)
Dr. Eng. Muslim, M.T (Indonesia)
Dr. Emi Sukiyah, ST., MT (Indonesia)
Dr. Sapari Dwi Hadian, MT (Indonesia)
Dr. Vijaya Isnaniawardhani, S.T, M.T (Indonesia)
Good Fried Panggabean, S.T, M.T (Indonesia)
Katia Nagamine Urata, M.Eng (Brazil)
Mirza Muhammad Waqar, M.Sc (Pakistan)
Kageaki Inoue, M.Eng (Japan)
Yuta Izumi, M.Eng (Japan)
Joko Widodo, S.Si, M.Si (Indonesia)
Yuniarti Yuskar S.T, M.T (Indonesia)
Dewandra Bagus EP., B.Sc (Hons) M.Sc. (Indonesia)
Budi Prayitno S.T, M.T (Indonesia)
Adi Suryadi B.Sc. (Hons) M.Sc. (Indonesia)
Babag Purbantoro, S.T, M.T (Indonesia)
Pakhrur Razi, S.Si, M.Si (Indonesia)
Eunice Wanjiku Nduati M.Agr (Kenya)
Muhammad Zainuddin Lubis S.Ik M.Si (Indonesia)

PREFACE

Welcome to the Journal of Geoscience, Engineering, Environment and Technology (JGEET). JGEET is a peer reviewed, open access and online journal in English for the enhancement of research in various areas of science and engineering. The aim of the JGEET is to give a highly readable and valuable addition to the literature which will serve as an indispensable reference tool for years to come. Now, we're publishing our new issue Vol 02 No 03 2017.

We are pleased the scientist and researcher to publish in this journal. This journal discussed the topic related to the areas of geoscience, engineering, environment, and technology.

As the Editor-in-Chief of the JGEET, I take this opportunity to express my sincere gratitude to authors who have chosen JGEET to disseminate their research. Further, I would like to thank executive editorial advisor, journal manager, editorial member and other supporting staff for the success of this Journal.

We are more than happy to receive contributions for our next issue from academicians, researchers, scholars and practitioners to ensure the consistency and the success of the Journal.

Thank you very much.

Editor-in-Chief

LIST OF CONTENT

Original Research Article

- 1. Impact of Sulphur Content on Coal Quality at Delta Plain Depositional Environment: Case study in Geramat District, Lahat Regency, South Sumatra 183**
- 2. Geochemical Characteristics of Metamorphic Rock-Hosted Gold Deposit At Onzon-Kanbani Area, Central Myanmar..... 191**
- 3. Characterization of Coal Quality Based On Ash Content From M2 Coal-Seam Group, Muara Enim Formation, South Sumatra Basin..... 203**
- 4. The Coherency and Correlation between Sea Surface Temperature and Wind Velocity in Malacca Strait: Cross Wavelet Transform and Wavelet Coherency Application 210**
- 5. The Metamorphic Rocks-Hosted Gold Mineralization At Rumbia Mountains Prospect Area In The Southeastern Arm of Sulawesi Island, Indonesia 216**
- 6. Mataloko Geothermal Power Plant Development Strategy in order to Maintain The Sustainability of Supply and Demand Electric Energy in Kupang, East Nusa Tenggara (A System Dynamics Framework) 224**

Review Article

- 7. Seabed Detection Using Application Of Image Side Scan Sonar Instrument (Acoustic Signal)..... 230**

AUTHOR GUIDELINE

Journal of Geoscience, Engineering, Environment, and Technology

1. Paper Title

This is your opportunity to attract the reader's attention. Remember that readers are the potential authors who will cite your article. Identify the main issue of the paper. Begin with the subject of the paper. The title should be accurate, unambiguous, specific, and complete. Do not contain infrequently-used abbreviations. The title of the paper should be in 16 pt bold Font Gulliver-Regular and be centered. The title should have 0 pts space above and 12 pts below.

2. Authors Name and Affiliations

Write Author(s) names without a title and professional positions such as Prof, Dr, Production Manager, etc. Do not abbreviate your last/family name. Always give your First and Last names. Write clear affiliation of all Authors. Affiliation includes a name of department/unit, (faculty), a name of university, address, country. Please indicate Corresponding Author (include email address) by adding an asterisk (*) in superscript behind the name.

Author names should be in 12 pt Gulliver-Regular with 6 pts above and 12 pts below. Author addresses are superscripted by numerals and centered over both columns of manuscripts. Author affiliations University name / institution / research study / company should be in 7 pt Gulliver-Regular. The body of the text should commence two lines (24 points) below the last address.

Present/permanent address. If an author has moved since the work described in the article was done, or was visiting at the time, a 'Present address' (or 'Permanent address') may be indicated as a footnote to that author's name. The address at which the author did the work must be retained as the main, affiliation address. Start by adding an asterisk (*) and then email, phone number, font gulliver 7pt.

3. Abstract

The word "Abstract" should put in left, bold, 8 point, paragraph space after 6 poin. Abstract should contain summary of the all research (aim, scope, result and conclusion) with maximum 300 words, justified, 8 point, and line spacing : single. For keywords wrote in italic and then separated using symbol (,) with maximum are 6 words.

4. Introduction

In Introduction, Authors should state the objectives of the work at the end of introduction section. Before the objective, Authors should provide an adequate background, and very short literature survey in order to record the existing solutions/method, to show which is the best of previous researches, to show the main limitation of the previous researches, to show what do you hope to achieve (to solve the limitation), and to show the scientific merit or novelties of the paper. Avoid a detailed literature survey or a summary of the results.

To prepare your paper, use directly this template and simply replace this text by your text. These instructions are to be followed strictly, and it is strongly advised to use the styles indicated in this document between square brackets. It is strongly advised NOT to use formatting or styles in your paper different from the ones mentioned here.

The book size will be in A4 (210 x 297 mm). Left margin 30mm, Right Margin 2mm, Top Margin 20mm and Bottom Margin: 20mm. Please make sure that you do not exceed the indicated type area.

The structure of manuscripts should follow the following order; title, authors, affiliations, abstract, keywords, main text, (acknowledgement), (appendix), (nomenclature), references. The items with parentheses are not mandatory.

The maximum pages printed in JGEET are supposed to be 10 for an original paper and 15 for a review paper. Do NOT include page numbers. Do NOT add Headers or Footers. Prescribed font is Gulliver, 9 points, with an single line spacing. However, if your text contains complicated mathematical expressions or chemical formulae, you may need to increase the line spacing. Running text should be justified.

5. Section headings

The way chapter titles and other headings are displayed in these instructions, is meant to be followed in your manuscript.

Level 1: Gulliver, 9, Bold, 6 pt spacing before heading, 6 pt spacing after heading.

Successive Levels: Times New Roman, 8, Bold, 6 pt spacing before heading, NO spacing below heading.

Do NOT begin a new section directly at the bottom of the page, but transfer the heading to the top of the next page. Cite the main scientific publications on which your work is based. Cite only items that you have read. Do not inflate the manuscript with too many references. Avoid excessive self-citations. Avoid excessive citations of publications from the same region. Check each reference against the original source (authors name, volume, issue, year, DOI Number).

Please use Reference Manager Applications like EndNote, Mendeley, Zotero, etc. Use other published articles in the same journal as models. If you are cite using mendeley please use **Elsevier Harvard (With Title)** for cite model stlye of this journal.

6. Footnotes

It is requested not to us any of footnotes. All references should be in the References. Explanations should be preferably included in the text.

7. Symbols and units, numbers

If symbols are defined in a nomenclature section, symbols and units should be listed in alphabetical order with their definition and dimensions in SI units. Please use the SI set of units as much as possible. Wherever the application domain uses a different set of units widely, please minimize the use of non-standard units or non-standard symbols for those units. As examples, the use of “a” for year (annum) is depreciated and the use of “y” is encouraged instead. Similarly, “h” should be used for hours instead of “hr” and “t” instead of “ton” or “tonne”. It is important to take care of the case in which the measurement units are typed. E.g. “Km” does not mean “kilometers”, but “Kelvin-meters”.

When providing numerical values followed by measurement units, please leave a regular space or non-breaking space between each value and the measurement unit. This also includes percentages and degrees Celsius (e.g. 42 % or 35 %, 234 °C, 504 K). This rule also applies to the unit for litre, which is recommended to be capital “L”. The authors are encouraged to render the numbers according to the International rules, specifying the dot as a decimal separator and the comma as a thousands separator.

8. Equations

Make sure that placing and numbering of equations is consistent throughout your manuscript.

$$d \left\{ \sum \frac{1}{2} m_k \left[\left(\frac{dx_i}{dt} \right)^2 + \left(\frac{dy_i}{dt} \right)^2 + \left(\frac{dz_i}{dt} \right)^2 \right] \right\} = \sum (X_i dx_i + Y_i dy_i + Z_i dz_i) \quad (1)$$

$$\bar{C}(t) = \frac{1}{N} \sum_{i=1}^N C_i(t) \quad (2)$$

Left align the equation and put the number of the equation flush-right, using a Right Tab on the right margin. Please reference equations in the text by writing: Eqn. .. (do not use Equation ..) In principle, variables are to be presented in italics.

9. Figures and Tables

Figures and tables should be originals or sharp prints. Please use the SI set of units as much as possible. Figures and tables should be centered and placed either at the top or at the bottom of the page. Please do not render tables as pictures and please do not use too small font sizes in the illustrations. Please use the following fonts in your illustrations: Gulliver, Symbol, or use fonts that look similar.

If your figures and tables are created in a Microsoft Office application (Word, PowerPoint, Excel) then please supply 'as is' in the native format, too. Regardless of the application used other than Microsoft Office, when your electronic artwork is finalized, please 'Save as' or convert the images to one of the following formats (note the resolution requirements for line drawings, halftones, and line/halftone combinations given below):

- EPS (or PDF): Vector drawings, embed all used fonts.
- TIFF (or JPEG): Color or grayscale photographs (halftones), keep to a minimum of 300 dpi.
- TIFF (or JPEG): Bitmapped (pure black & white pixels) line drawings, keep to a minimum of 1000 dpi.
- TIFF (or JPEG): Combinations bitmapped line/half-tone (color or grayscale), keep to a minimum of 500 dpi.

Set table number and title flush left above table. Horizontal lines should be placed above and below table headings and at the bottom of the table. Vertical lines should be avoided. Title should use Gulliver 8, with 10 pt before and 4 pt after the paragraph, left justified at the top of the table. Tables have to be included into the text. If a table is too long to fit one page, the table number and heading should be repeated on the next page before the table is continued. Alternatively the table may be spread over two consecutive pages (first an even numbered, then an odd-numbered page) turned by 90, without repeating the heading.

10. Figure captions

Fig. 1 Captions should be placed below each illustration, font Times New Roman, 7 pts. Figures and figure captions should be placed center; two narrow figures may be placed side-by-side. Please reference figures in the text by writing: Fig. ... (do not use Figure ...).

11. Concerning references

In order to give our readers a sense of continuity, we encourage you to identify JGEET articles of similar research in your papers. Please, do a literature check of the papers published in JGEET in recent years at jurnal.uir.ac.id/JGEET/Index.

For citation and model citation we are using Elsevier harvard (with title), you can find it using mendeley or other reference manager program or using citation machine on the internet, such as <http://www.citationmachine.net/elsevier-harvard/cite-a-report/manual>.

References must be listed at the end of the paper. Do not begin them on a new page unless this is absolutely necessary. Authors should ensure that every reference in the text appears in the list of references and vice versa. Indicate references by (Putra and Choanji, 2016), (Natasia et al., 2016) or (Selley et al., 2005).

Recommendations for references are:

Book

Rothery, D.A., 2008. Geology. McGraw-Hill Companies, Blacklick, OH.

Or

Selley, R., Robin, L., Cocks, M., Plimer, I., 2005. Encyclopedia of Geology. Geology 3345. doi:10.1016/B0-12-369396-9/00102-7

Magazine

Geo 2010 hailed as the best Geoscience event in Mideast., 2012. . Oil & Gas News.

Journal

Schopf, T.J.M., 1978. The Structure of Geology . David B. Kitts. The Journal of Geology 86, 278–279. doi:10.1086/649684

Thesis

Coons, R.L., 1966. Precambrian basement geology and Paleozoic structure of the mid-continent gravity high. (thesis).

Dissertation

Beukeboom, T.J., 1976. The hydrology of the Frisian islands (dissertation).

Report

Khairani, S., n.d. Tinjauan batupasir silika sebagai energi sumber daya alam terbarukan di daerah batam dan sekitarnya (rep.), Tinjauan batupasir silika sebagai energi sumber daya alam terbarukan di daerah batam dan sekitarnya

Website

Petrology/Mineral Physics [WWW Document], n.d. [WWW Document]. JSG News RSS. URL <http://www.jsg.utexas.edu/research/disciplines/petrology-mineral-physics/> (accessed 12.19.16).

When preparing your reference list, the following should be avoided:

- References not cited in the text.
- Excessively referencing your work.
- Insufficiently referencing the work of others.

Some examples of how your references should be listed are given at the end of this template in the **'References' section, which will allow you to assemble your reference list according to the correct format and font size.** When you are referencing conference proceedings, page numbers should be provided. If proceedings are not available, the lecture identification – e.g. lecture number should be provided instead. When you are referencing websites, an author or authoring institution should be provided. The date of the last access should be provided as well.

The hyperlinks (blue colour and underlining) should be removed from email addresses and web references. You do not need to repeat <http://> as modern browsers do not require it. However the date of the last access should be always provided.

12. Acknowledgements

Collate acknowledgements in a separate section at the end of the article before the references and do not, therefore, include them on title page, as a footnote to the title or otherwise. List here those individuals who provided help during the research (e.g., providing language help, or proof reading the article, etc.). Acknowledgement can be written in this paper or not. Using 9 pt font Gulliver-Regular, 6 pt after headings.

13. References

- Natasia, N., Syafri, I., Alfadli, M.K., Arfiansyah, K., 2016. Stratigraphy Seismic and sedimentation Development of Middle Baong Sand , Aru Field , North Sumatera Basin. *J. Geoscience, Engineering, Environment, and Technology* 1, 51–58.
- Putra, D.B.E., Choanji, T., 2016. Preliminary Analysis of Slope Stability in Kuok and Surrounding Areas. *J. Geoscience, Engineering, Environment, and Technology* 1, 41–44.
- Selley, R., Robin, L., Cocks, M., Plimer, I., 2005. *Encyclopedia of Geology*. Geology 3345. doi:10.1016/B0-12-369396-9/00102-7
- Trouw, R., Passchier, C., Wiersma, D., 2009. *Atlas of Mylonites- and related microstructures*. Springer, Berlin Heidelberg. doi:10.1007/978-3-642-03608-8

UIR PRESS

Jl. Kaharuddin Nasution No 113 Marpoyan Damai
Pekanbaru, Riau 28284
Phone.(0761) 72126 , Fax. 0761-674834
e-mail: jgeet@journal.uir.ac.id
website: <http://journal.uir.ac.id/index.php/JGEET>

E-ISSN



P-ISSN



Characterization Of Coal Quality Based On Ash Content From M2 Coal-Seam Group, Muara Enim Formation, South Sumatra Basin

Frillia Nasution^{1*}, Stevanus Nalendra¹

¹ *Geology Study Program, Engineering Faculty, Sriwijaya University.*

* Corresponding Author: nasutionfrillia@gmail.com

Tel.: +62-852-7329-9464;

Received: May 22, 2017. Revised : July 5, 2016, Accepted: Aug 5, 2017, Published: 1 Sept 2016

DOI : 10.24273/jgeet.2017.2.3.292

Abstract

Muara Enim Formation is well known as coal-bearing formation in South Sumatra Basin. As coal-bearing formation, this formation was subjects of many integrated study. Muara Enim Formation can be divided into four coal-seam group, M1, M2, M3, and M4. The M2 group comprising of Petai (C), Suban (B), Lower Mangus (A2), and Upper Mangus (A1). Depositional environments of Group M2 is transitional lower delta plain with sub-depositional are crevasse splay and distributary channel. The differentiation of both sub-depositional environments can be caused the quality of coal deposit. One of quality aspects is ash content. This research conducted hopefully can give better understanding of relationship between depositional environments to ash content. Group M2 on research area were found only Seam C, Seam B, and Seam A2, that has distribution from north to central so long as 1400 m. Coal-seam thickness C ranged between 3.25-9.25 m, Seam B range 7.54-13.43 m, and Seam C range 1.53-8.37 m, where all of coal-seams thickening on the central part and thinning-splitting to northern part and southern part. The ash content is formed from burning coal residue material. Ash contents on coal seam caused by organic and inorganic compound which resulted from mixing modified material on surrounded when transportation, sedimentation, and coalification process. There are 27 sample, consists of 9 sample from Seam C, 8 sample from Seam B, and 10 sample from Seam A2. Space grid of sampling is 100-150 m. Ash content influenced by many factors, but in research area, main factor is existence of inorganic parting. Average ash content of Seam C is 6,04%, Seam B is 5,05%, and Seam A2 is 3,8%. Low ash content influenced by settle environment with minor detrital material. High ash content caused by oxidation and erosional process when coalification process. Ash content on coal in research area originated from detritus material carried by channel system into brackish area or originated from higher plant in brackish area. The high ash content also can be caused by after the coal deposited. It had originated from overburden horizon which infill in cleat of coal seam.

Keywords: Muara Enim Formation, Group M2, Transitional Lower Delta Plain, Ash Content.

1. Introduction

1.1. Background

Muara Enim Formation is well known as coal-bearing formation in South Sumatra basin. As coal-bearing formation, this formation was subjects of many integrated study, such as sedimentology, depositional environment, paleogeography, structure geology, tectonic evolution, depositional history, and many more (De Coster, 1974).

Muara Enim Formation consists of sandstone, claystone and coal. Coal in bottom part of Middle Palembang formation in southern part of this basin often used as stratigraphy marker. Muara Enim formation can be divided into four coal-seam group, M1, M2, M3, and M4. (De Coster, 1974) interpreted this formation deposited in Late Miocene-Pliocene.

The M2 group is comprising of Petai (C), Suban (B), Lower Manggus (A2), and Upper Manggus (A1). Group M2 consists of intercalated of claystone-sandy claystone, fine-medium sand, coal in bottom part. Coal seams in Group M2 have limited distribution. It caused by depositional environment from this unit. Depositional environment of Group M2 is transitional lower delta plain with sub-depositional are crevasse splay and distributary channel.

The differentiation of both sub-depositional environments can be caused the quality of coal deposit. One of quality aspects is ash content. This research conducted hopefully can give better understanding of relationship between depositional environments to ash content.

deposited on transgression phase are Telisa Group (Talang Akar Fm., Baturaja Fm., and Gumai Fm.). On other side, regression phase deposited Palembang Group (Air Benakat Fm., Muara Enim Fm., and Kasai Fm. Older formations (Lemat Fm. and Older Lemat Fm. deposited before main transgression phase. Stratigraphy unit of South Sumatra Basin from oldest to youngest (De Coster, 1974), are Pre-Tertiary Group, Kikim Fm., Older Lemat Fm., Lemat Muda Fm., Talang Akar Fm., Baturaja Fm., Telisa Fm., Gumai Fm., Lower Palembang Fm., Middle Palembang Fm., and Upper Palembang Fm. (Fig. 4).

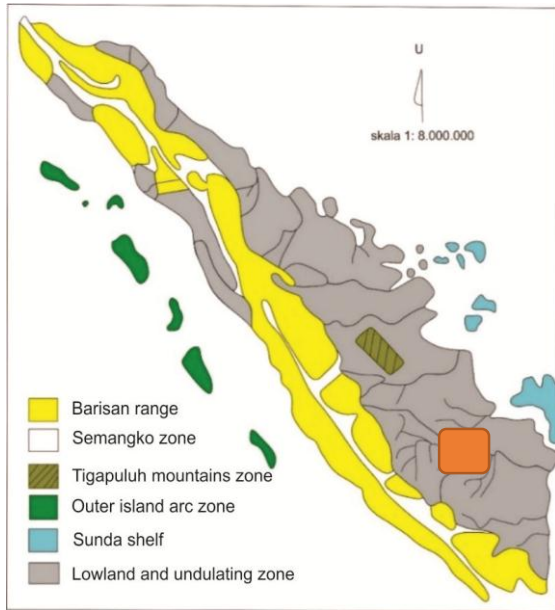


Fig. 3. Physiography zone of Sumatra (Bemmelen, 1949).

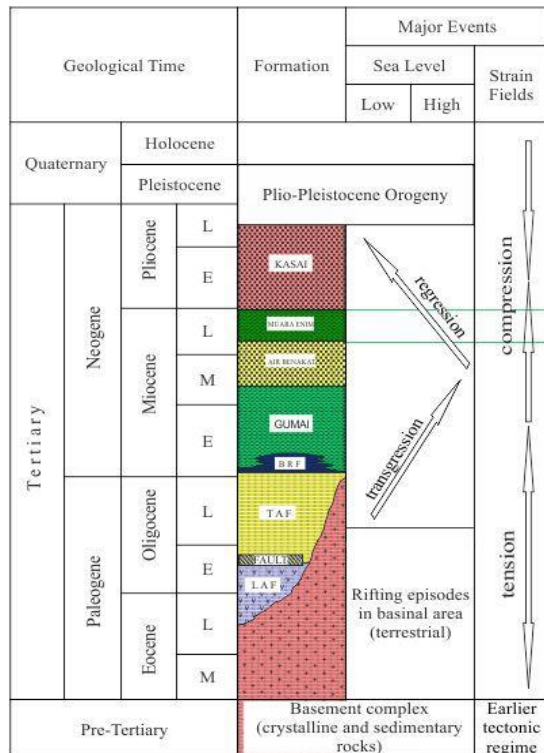


Fig. 4. Regional stratigraphy of South Sumatra Basin (Sutriyono et al., 2016).

Muara Enim Formation is coal-bearing formation in South Sumatra Basin. Muara Enim Formation can divided into four coal-seam group (Ilyas, 1999), accordingly from bottom to top are M1, M2, M3, and M4 (Fig. 5). The M2 group have found in research area. Group M2 contains majority of coal resources in Tanjung Enim area. The M2 consists of three major coal unit (from top to bottom); Mangus, Suban and Petai (Amier, 1991). Recognized these unit locally split into two seams as follows: Mangus unit (A1 and A2 seams), Suban unit (B1 and B2 seams), and Petai unit (C1 and C2 seams)

Coal Bearing Formation	Coal Seam Unit	General Description	Coal Seam
MUARA ENIM	M4	Blue green tuffaceous clays and sandy clays, some dark brown coaly clays. Some white and grey, fine to coarse sands, at times slightly glauconitic. Single pumice stone layers in the central Palembang area (120-200m thick)	Niru Lematang Babat/Benakat Kebon
	M3	Sand and silt complex. Underlain by predominantly blue-green grey green and grey brown clay complex. Few thin calcareous and domitic bands. Sand horizon of 3-6m, about 40m above Mangus with some gas pocket (100-280m thick)	Benuang Burung Mangus
	M2	Brown to grey clays and sandy clays brown, grey, fine to medium sands, some green, grey fine grained sands in lower part (40-120m thick).	Suban Petai
	M1	Brown and grey sands, silts and clays, with minor glauconitic sands (120-250m thick).	Merapi Keladi

Fig. 5. Stratigraphy of Muara Enim Formation (modified (A.D.Tarsis, n.d.)).

Pulunggono, 1986 interpreted Muara Enim formation deposited in shallow marine to paralic and non-marine environments. This formation consists of claystones and shales intercalated by sandstone and coal layer.

On other hand, based on analysis of well and seismic data, divided Muara Enim formation into two depositional packages: Lower and Upper Muara Enim formation (Muksin et al., 2012).. These two depositional packages consists of three sub-environment, they are tidal mud flat, tidal mixed flat and tidal sand flat environment.

3. Research Method

Research method was conducted on this study are:

- Field observation, including observation of relationship coal layer to other layers (bottom and top) and also the condition which influenced the layers.
- Quality analysis of coal layer to identified distribution of coal layer and geology factors.
- Research were conducted by reconnaissance through study literature and field observation, analyses phase (primary analysis and secondary analysis), and conclusion phase (result).

Group M2 on research area were found only Seam C, Seam B, and Seam A2, that has distribution from north to central so long as 1400 m (Fig. 6).

Coal-seam thickness C ranged between 3.25-9.25 m, Seam B range 7.54-13.43 m, and Seam C range 1.53-8.37 m, where all of coal-seams thickening on the central part and thinning-splitting to northern part and southern part.

The ash content is formed from burning coal residue material. Ash contents on coal seam caused by organic and inorganic compound which resulted from mixing modified material on surrounded when transportation, sedimentation, and coalification process. There are 27 sample, consists of 9 sample from Seam C (Table 1), 8 sample from Seam B (Table 2), and 10 sample from Seam A2 (Table 3). Space grid of sampling is 100-150 m. The coal quality analysis discussed throughout this research were analyzed on air dried basis (adb.).

Table 1. Ash value of seam C.

Sample Code	Seam	Ash Value (adb)
FR-11	C	4,66
FR-15	C	8,13
FR-12	C	6
FR-16	C	7,45
FR-17	C	7
FR-10	C	4,73
FR-05	C	5,59
FR-14	C	7,24
FR-07	C	2,23

Tabel 2. Ash Value of Seam B.

Sample Code	Seam	Ash Value (adb)
FR-01	B	5,63
FR-08	B	8,04
FR-02	B	5,61
FR-12	B	6,4
FR-10	B	3,07
FR-05	B	4,95
FR-14	B	3,69
FR-07	B	3,05

Table 3. Ash Value of Seam A2.

Sample Code	Seam	Ash Value (adb)
FR-01	A2	3,03
FR-08	A2	1,71
FR-02	A2	2,48
FR-03	A2	3,39
FR-09	A2	2,59
FR-04	A2	3,28
FR-10	A2	3,24
FR-05	A2	2,71
FR-07	A2	6,85
FR-06	A2	9,56

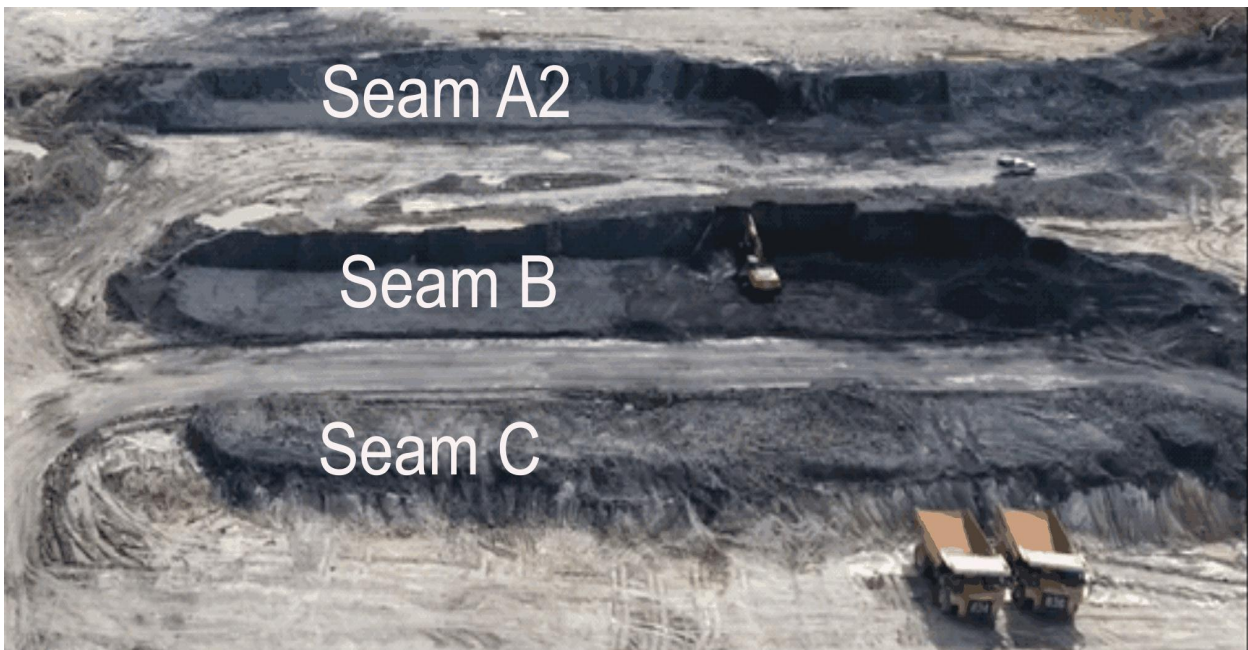


Fig. 6. Outcrops of seam A2, seam B, and seam C.

4. Result and Discussion

The ash contents for all samples varies slightly, with average ranging from 1.71-9.56 adb.%.

4.1. Ash content analysis of Seam C

Seam C on research area have thickness around 3.25-9.25 m, where divided into 5 body with 4 parting with various thickness between 5-30 cm. Stratigraphic profile of Seam C can be seen on Fig. 7.

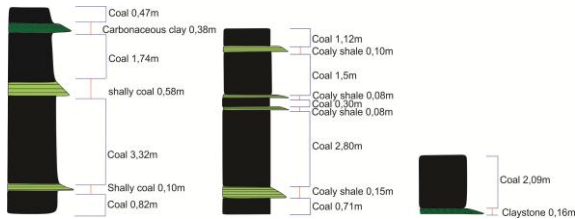


Fig. 7. Coal profile of coal-seam C in northern (left), central (middle), and southern (right) of research area.

Based on ash content on Seam C (Fig. 8), showed highest ash content located on central part of research area, besides that northern and southern part have low ash content. It can be caused by northern and southern part are depocenter of basinal area. This condition made coal layer on this part have thick layer and less of parting. The highest ash content located on central part of research area, it indicated that coal deposited in edge of basinal area. This part could influenced by terrestrial material. This condition indicated why ash content on edge of basinal have ash content higher than depocenter of basinal area.

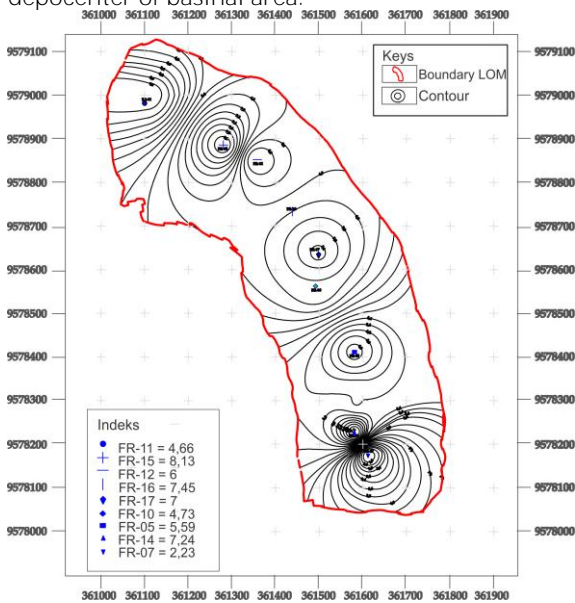


Fig. 8. Iso ash map of Seam C.

4.2. Ash content analysis of Seam B

Seam B on research area have thickness around 7.54-13.43 m, where divided into 5 body with 4 parting with various thickness between 4-20 cm. Stratigraphic profile of Seam C can be seen on Fig. 9.

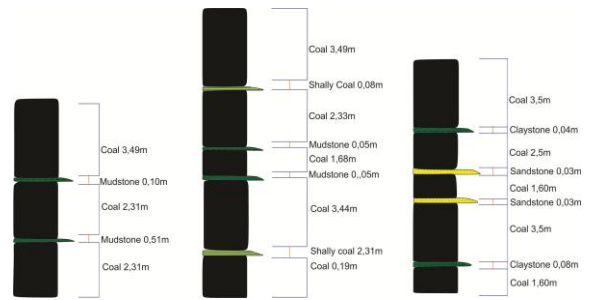


Fig. 9. Coal profile of coal-seam B in northern (left), central (middle), and southern (right) of research area.

Based on ash content on seam B (Fig. 10), showed ash content increased to northern part. That analysis indicated that coal seam B in northern part deposited in edge of basinal area. This part could influenced by terrestrial material. This condition indicated why ash content on edge of basinal have ash content higher than depocenter of basinal area.

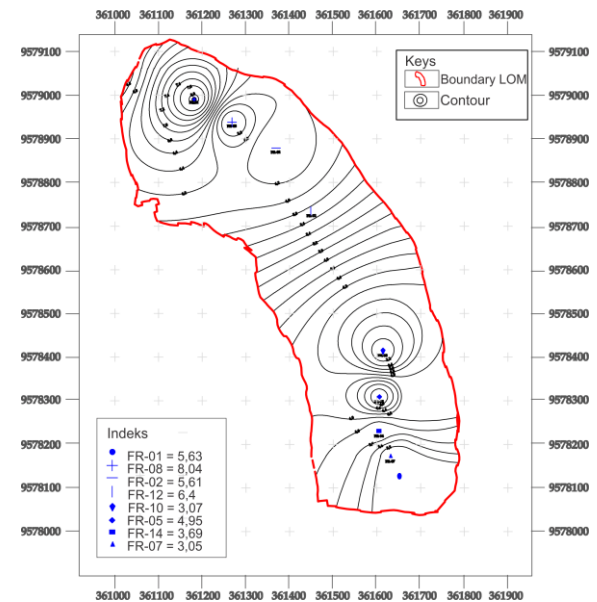


Fig. 10. Iso ash map of Seam B.

4.3. Ash content analysis of Seam A2

Seam A2 on research area have thickness around 1.53-8.37 m, where divided into 3 body with 2 parting with various thickness between 5-10 cm. Stratigraphic profile of Seam C can be seen on Fig. 11.

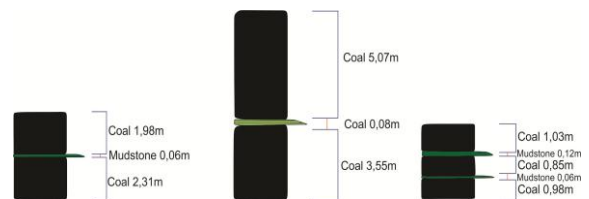


Fig. 11. Coal profile of coal-seam A2 in northern (left), central (middle), and southern (right) of research area.

Based on ash content of seam A2 (Fig. 12), showed ash content increased to southern part. It caused by southern part is edge of basinal area. Coal which deposited in edge of basinal area mainly influenced with terrestrial material. It resulted coal in this area have higher ash content than central part. The low ash content in central part was assumed that minor terrestrial content. It indicated the area is depocenter of basinal area.

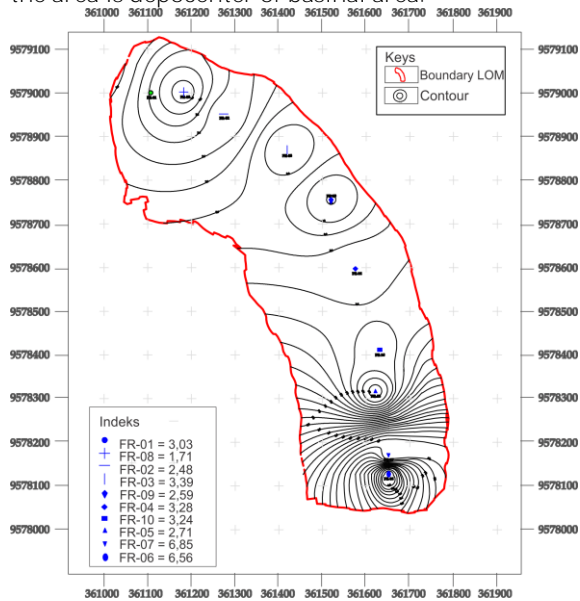


Fig 12. Iso ash map of Seam A2.

4.4. Interpretation of depositional environment

Depositional environment of Group M2 in research area is transitional lower delta plain by using [horne, 1978](#) classification of depositional environment based on coal characteristic. It indicated by lithology changed and repeated lithology as characteristics of depositional processes influenced by tidal ([Thomas, 2013](#)) (Fig. 13).

Parting occurrence on coal seam in research area caused by in depositional processes of coal there are flooding phase or formed by tidal process which caused fine grain sediment also deposited coincided with coalification process. But fine grain sediment was not continuous deposited because the limited source of this material. The depositional process

still occupied to deposit peat material and coalification process. This process can be caused occurrence of parting in coal seam.

Ash content on coal seam in research area originated from detritus material which brought by channel system into brackish area or originated from higher plant in brackish area. The high ash content also can be caused by after the coal deposited. It can origin from overburden horizon which infill in cleat of coal layer.

In research area, coal seam have found with various thickness (thick and thin). It influenced by two processes: process when depositional takes place and process after deposited. First process is basin subsidence, if there are rapid subsidence it could made thick coal seam. Second process is erosional process by channel changing. It could be caused thinning on edge of coal seam. On other hand, various coal thickness can also influence by different of rate of peat growth. If rapid peat growth rate, it caused thick coal layer, but if slow peat growth rate, it caused thin coal seam.

5. Conclusion

Coal-seam group of Muara Enim Formation in research area occurred on Group M2 unit which consists of Seam C, Seam B, and Seam A2. Group M2 have various thickness. Thickness of Seam A2 is around 1.53-8.37 m. Seam B between 7.54-13.43 m, and Seam C have thickness is 3.25-9.25 m. All of seam have thickening geometry in central part and thinning in both of edge part (northern and southern part).

Based on sedimentation characteristic, Group M2 in research area deposited in transitional lower delta plain with sequence interburden characteristics, intercalated of fine-coarse grain with fining upwards and coarsening upwards, thick coal seam with continuous distribution.

Ash content influenced by many factors, but in research area, main factor is existence of parting. Average ash content of Seam C is 6.04 adb.%, Seam B is 5.05 adb.%, and seam A2 is 3.8 adb.%. Low ash content influenced by settle environment with minor detrital material. High ash content caused by oxidation and erosional process coincided with coalification process.

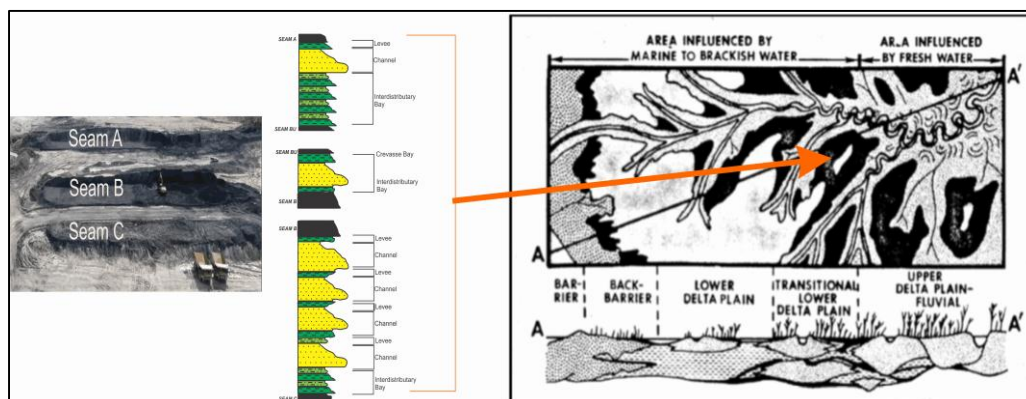


Fig. 13. Measuring section model compared to depositional environment of Group M2.

Acknowledgements

This research was funded by the Sriwijaya University undergraduate Geology study program. The authors would like to gratefully acknowledge PT. Prima Mulia Sarana Sejahtera (Baramulti Group) for the support during field session and for providing some coal analysis.

References

- A.D.Tarsis, n.d. Penyelidikan Batubara Bersistem Dalam Cekungan Sumatera Selatan Di Daerah Benakat Minyak Dan Sekitarnya, Kabupaten Muara Eim Propinsi Sumatera Selatan. Jakarta.
- Adiwidjaja, P., de Coster, G.L., 1973. Pre-Tertiary paleotopography and related sedimentation in South Sumatra. *Proc. Indones. Pet. Assoc.* 89–104.
- Amier, R.I., 1991. Coals, source rocks and hydrocarbons in the South Palembang sub-basin, south Sumatra, Indonesia.
- Bemmelen, van, 1949. *Geology of Indonesia*, Vol. IA. ed. Government Printing Office, The Hague.
- De Coster, G.L., 1974. The Geology of the Central and South Sumatra Basins. *Proc. Indones. Pet. Assoc. Third Annu. Conv. June 1974* 77–110.
- Horne, J., Ferm, J., Caruccio, F., Baganz, P., 1978. Depositional Models in Coal Exploration and Mine Planning in Appalachian Region. *Am. Assoc. Pet. Geol. Bull.* 62, 2379–2411.
- Ilyas, S., 1999. Pengkajian Cekungan Btubara Di Daerah Talang Ubi, Kabupaten Musi Banyuasin dan Muara Enim, Provinsi Sumatera Selatan. *Pemaparan Has. Kegiat. Lapangan DIK-S Batubara, DSM* 1–6.
- Muksin, N., Yusmen, D., Waren, R., Werdaya, A., Djuhaeni, D., 2012. Regional Depositional Environment Model of Muara Enim Formation and Its Significant Implication for CBM Prospectivity in South Sumatra Basin, Indonesia * 80272.
- Pemerintah Kabupaten Muara Enim, 2012. *Peta Administrasi Wilayah Kabupaten Muara Enim*.
- Pulunggono, A., 1986. Tertiary Structural Features Related To Extensional and Compressive Tectonics in The Palembang Basin, South Sumatra. *Proc. Indones. Pet. Assoc.*
- Pulunggono, A., S. Haryo, A., Kosuma, C.G., 1992. Pre-Tertiary and Tertiary Fault Systems as a Framework of the South Sumatra Basin; A Study of SAR-Maps. *Proc. Indones. Pet. Assoc.* 21, 92–11.37.
- Sutriyono, E., Wiwik, E., Hastuti, D., Susilo, B.K., 2016. Geochemical Assessment of Late Paleogene Synrift Source Rocks in The South Sumatera Basin. *Int. J. GEOMATE* 11, 2208–2215.
- Thomas, L., 2013. *Coal Geology*, Second Edi. ed, Coal Geology. A John Wiley & Sons, Ltd., doi:10.1002/9781118385685