

Hermansyah,
Proceeding/2.11_Proceeding_Cloning of
SLPI gene containing HM-1 signal peptide
in *Saccharomyces cerevisiae* 12.43.06
AM 9.19.06 AM.pdf

By Hermansyah Hermansyah

Cloning of SLPI gene containing HM-1 signal peptide in *Saccharomyces cerevisiae*

Cite as: AIP Conference Proceedings 2049, 030011 (2018); <https://doi.org/10.1063/1.5082512>
 Published Online: 14 December 2018

Evi Umayah Ulfa, Elly Munadzirah, Hermansyah, and Ni Nyoman Tri Puspaningsih



View Online



Export Citation

ARTICLES YOU MAY BE INTERESTED IN

The analysis of thermal and mechanical properties of biocomposite polycaprolactone/cellulose nanofiber from oil palm empty fruit bunches

AIP Conference Proceedings 2049, 020063 (2018); <https://doi.org/10.1063/1.5082468>

Distribution of polyprenols and dolichols from fruits and rinds of *Barringtonia racemosa*, *Thespesia populnea*, and *Xylocarpus granatum*

AIP Conference Proceedings 2049, 020075 (2018); <https://doi.org/10.1063/1.5082480>

Catalytic conversion of Al-MCM-41-ceramic on hydrocarbon (C₈ - C₁₂) liquid fuel synthesis from polypropylene plastic waste

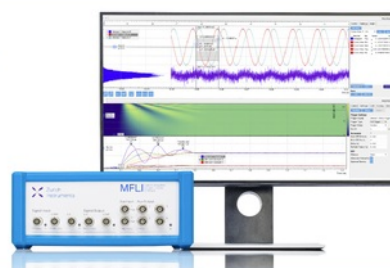
AIP Conference Proceedings 2049, 020080 (2018); <https://doi.org/10.1063/1.5082485>

Challenge us.

What are your needs for periodic signal detection?



Zurich Instruments



3 Cloning of SLPI Gene containing HM-1 Signal peptide in *Saccharomyces cerevisiae*

Evi Umayah Ulfa^{1,4}, Elly Munadziroh², Hermansyah³, and Ni Nyoman Tri Puspaningsih^{1,5,a)}

¹Department of Chemistry, Faculty of Science and Technology, Universitas Airlangga, Surabaya, Indonesia
²Department of Dental Material and Technology, Faculty of Dentistry, Universitas Airlangga, Surabaya, Indonesia
³Department of Chemistry, Faculty of Mathematics and Natural Sciences, Universitas Sriwijaya, Palembang, Indonesia
⁴Department of Pharmaceutical Biology, Faculty of Pharmacy, Universitas Jember, Jember, Indonesia
⁵Proteomic Study Group, Institute of Tropical Disease, Universitas Airlangga, Surabaya, Indonesia

^{a)} Corresponding author: ni-nyoman-t-p@fst.unair.ac.id

Abstract. SLPI is a non-glycosylated protein and it composed of 107 amino acid secreted by epithelial cells, macrophages, and neutrophils. This protein has multiple functions i.e. anti-inflammatory, anti-microbial, and wound healing. SLPI is involved in wound healing by protecting epithelial tissues from serine protease degradation during inflammation. Our previous study has successfully cloned SLPI gene generated from the amniotic membrane into the pET-101/D-TOPO vector. However, *E. coli* is not a safe host for recombinant protein production because its cell wall contains toxic pyrogens. To overcome the limitation, we cloned SLPI gene into the pYHM1 vector for expression in *Saccharomyces cerevisiae*. The American Food and Drug Administration (FDA) categorized *S. cerevisiae* as a Generally Recognized as Safe (GRAS) microorganism. The pYHM1 vector contains H₂₁ signal peptide to mediate protein secretion. SLPI gene from amniotic membrane was amplified from pET-ESLPI. The PCR product was digested by *SacI* and *EcoRI* and cloned into a pYHM1 vector to produce pY_{SLPI} recombinant plasmid in *E. coli* TOP10. The recombinant plasmid was then transformed into *S. cerevisiae* BJ1824 using lithium acetate method. The SLPI gene was successfully amplified with size ~339 bp and cloned into the pYHM1 vector in *E. coli* TOP10. The restriction and nucleotide sequence analysis showed that transformant number 31 contained SLPI gene. The pY_{SLPI} recombinant plasmid has been successfully transformed into *S. cerevisiae* BJ1824. SLPI recombinant was detected in intracellular and cell-associated by SDS PAGE.

Keywords: SLPI, pYHM1 vector, HM-1 Signal Peptide, *Saccharomyces cerevisiae*.

INTRODUCTION

18 Secretory Leukocyte Proteinase Inhibitor (SLPI) is a serine protease inhibitor belongs to Whey Acidic Protein family (WAP) which has a molecular weight of 11.7 kDa. It is expressed by different tissues, including trachea, bronchus, oral mucosa, salivary gland, lung, and vagina¹. The protein also inhibits elastase and cathepsin G from human neutrophile, trypsin and chymotrypsin derived from pancreatic proteases, and chymase and tryptase from mast cell^{2,3}.

Originally SLPI is discovered as protease inhibitor, yet recent studies showed that it has numerous functions such as anti-inflammatory, wound healing, antimicrobial and antiviral³⁻⁵. It contributes to accelerate the wound healing on inflammation, proliferation and re-epithelialization phase³. Its another role is reducing inflammatory response by inhibiting of neutrophil elastase, inhibiting nuclear factor-kB (NF-kB) activation, and increasing antiinflammatory cytokine production (interleukin 10 (IL-10) and tumor nuclear factor - β (TNF- β)). Inhibition of NF-kB activation renders macrophages unable to release of TNF α , IL-1 β and nitrite oxide. Additionally, SLPI also leads to an elevated level of vascular endothelial growth factor and platelet derived growth factor^{3,6,7}.

Several studies reported that SLPI has antibacterial activity against gram positive and gram negative bacteria. The inhibition activity of SLPI on skin associated bacteria including *Escherichia coli*, *Staphylococcus aureus*, *Pseudomonas aeruginosa* and *S. epidermidis* indicates that SLPI controls microbial bioburden in the skin^{8,9}. Besides having antibacterial activity, this protein also demonstrates antifungal activity against *Aspergillus fumigatus*, and *Candida albicans*³. Antimicrobial mechanism is employed by SLPI through membrane disruption. A high positive charge could trigger interaction between SLPI and lipid membrane of bacteria which result in membrane damage³. As an anti-viral, it prevents transmission of HIV-1 by blocking interaction between HIV-1 virus with receptor of the host cell. SLPI binds to the annexin II on the macrophage surface, thus interfering with the binding of the HIV viral phosphatidyl serine to host receptors⁴. Based on its multifunction, SLPI represents a promising protein therapeutic candidates to be used in post gingival recession therapy¹⁰.

Based on X ray crystallography, SLPI has two highly identical domain (N terminal and C terminal domain) that each contains four disulfide bridges formed from eight cysteine residues. N terminal domain of SLPI consists of Ser1-Pro54 residues while C terminal domain consists of Asn55-Ala107 residues. These disulfide bridges stabilize and maintain the compact structure of SLPI¹¹.

The gene encoding SLPI has been widely isolated and engineered to obtain recombinant SLPI. A cDNA of SLPI from amniotic membrane was successfully cloned into the plasmid pET-101/D-TOPO in *Escherichia coli* BL-21. A full-length recombinant SLPI has successfully expressed by IPTG induction although at a low level¹². Amniotic membranes have been widely used for treatment of burns, chronic ulcers, dural defects, peritoneal and genital reconstruction, and plastic surgery¹³. Different research groups have been expression SLPI in *E. coli* as inclusion bodies that requiring refolding of SLPI to correct its native conformation¹⁴. Although *E. coli* is preferred as a host for protein expression, the lipopolysaccharide (LPS) of the outer membrane can induce pyrogenic response and trigger septic shock. To overcome the limitation, We have chosen yeast *Saccharomyces cerevisiae* to express the full-length SLPI gene. *S. cerevisiae* is recognized as a safe microorganism. *S. cerevisiae* is also capable of modifying post-translation, including disulfide bond formation. In addition, Heterologous protein can be expressed extracellularly by using *S. cerevisiae* while in *E. coli* can not¹⁵.

Stetler (1989) has cloned gene encoding SLPI isolated from human parotid tissue and secreted in *S. cerevisiae* using two secretion system i.e α -factor and invertase signal sequences. SLPI is only successfully secreted by α factor signal sequence, although incompletely processed and misprocessed form of SLPI. Invertase system generated a mixture of an active full-length SLPI and inactive fusion SLPI with invertase in cell-associated¹⁶. The choice of a signal sequence that is fused with proteins is an important factor for obtaining a secreted proteins. There is no systematic approach to predict which signal sequence is best for secretion a certain protein. A signal sequence from *Hansenulla mrakii* IFO 0895 killer toxin (HM1) was successful for secretion of α -L-arabinofuranosidase¹⁷. In this study, we cloned SLPI gene into the pYHM1 vector for expression in *S. cerevisiae*.

MATERIALS AND METHODS

Materials

All chemicals were purchased from Sigma (St. Louis, MO-USA) or thermo fisher scientific except when specifically mentioned. *E. coli* strain BL21 Star (DE3) containing pET-ESLPI recombinant plasmid, *E. coli* TOP10, and *E. coli* TOP10 containing pYHM-1 plasmid derived from Airlangga University collection. *Saccharomyces cerevisiae* BJ1824 (MAT α , ura3, leu2, his3, trp1, pep4-3) and plasmid pAT425 are obtained from Yeast Genetic Resource Center (YGRC) collection, Osaka University, Japan. All oligonucleotides were synthesized by IDT. Pfu DNA polymerase, dNTP, T4 DNA ligase, restriction enzyme (*SacI*, *EcoRI*), plasmid purification kit and gel extraction kit were used for DNA manipulation. Luria Berthani (LB) broth and agar containing 100 μ g/mL ampicillin were used for bacterial growth and selection of bacterial transformants. YPD (2% Bactopectone, 1% yeast extract,

and 2% glucose) was used for yeast growth. YNB medium (0.67% yeast nitrogen base without uracil and 2% glucose) was used for yeast selection. YNB medium with 2% galactose (YNBG) was used for yeast expression.

Methods

Construction of pY-SLPI Recombinant Plasmid

Plasmid pET-*ESLPI* that harboring a full-length *SLPI* coding sequence from amniotic membrane was used as a template for PCR amplification. PCR amplification using the following primer pairs: primer 5'-GCGAGCTCATGTCTGGAAAGTCCTTCA-3' (forward) and GCCG-GAATTCTCAAGCTTTCACAGG -3' (reverse). Forward primer and reverse primer contain artificial *SacI* and *EcoRI* recognition sites (underline), respectively. PCR reactions were performed using 0.02 U/ μ L units of Pfu DNA polymerase, 0.2 μ M dNTP, 1 X Pfu buffer with MgSO₄, 0.5 μ M primers and 5 ng/ μ L DNA template in final volume 50 μ L. The annealing temperature was optimized to obtain desired target. The reactions were subject to 30 cycles. Purified PCR product (~339 bp) and pYHM1 were each digested with *SacI* and *EcoRI* restriction enzyme, then ligated at 4°C for 24h to generate pY *SLPI*. This recombinant plasmid was introduced in *E. coli* TOP10 using bacterial transformaid kit and the resulting transformants were selected on ampicillin resistance. pY *SLPI* was verified by restriction analysis and sequencing. Nucleotides sequence analysis was done commercially by IDT using primer pair T7 promoter as forward primer and cyc terminator as reverse primer.

Subcloning pY_SLPI into S. cerevisiae

The correct pY *SLPI* recombinant plasmid was sub-cloned into *S. cerevisiae* BJ1824 using lithium acetate method. Briefly, A single colony of *S. cerevisiae* BJ1824 was inoculated in YPD medium broth overnight. At the mid-log phase (OD₆₀₀ = 1), yeast was harvested by centrifugation, washed with water and resuspended with 0.1 M LiAc. After centrifugation, yeast was added 254 μ L of 50% PEG 4000, 36 μ L 1 M LiAc, 5 μ L plasmid and 79 μ L sterile water. This mixture was then incubated at 30 °C for 30 min and heat shocked at 42°C for 25 min. Yeast pellet was resuspended with 100 μ L aquabidest and plated on YNB medium without uracil. Colony PCR was used to confirm the presence of *SLPI* gene in transformants.

Expression of SLPI

A single colony of *S. cerevisiae* BJ1824 carrying pY *SLPI* was grown overnight at 30 °C, 150 rpm in 5 mL of YNB medium without uracil. The inoculum was then centrifugated at 1500 rpm for 5 minutes at 4 °C. Pellet cells were washed with distilled water and centrifugated 16 min. The pellet cells were then resuspended in 1 mL YNBG medium, inoculated into 30 mL of YNBG medium, and incubated for 1 day at 30 °C, 150 rpm. The yeast cells were separated from culture medium by centrifugation. Protein secreted in culture medium was precipitated by ethanol, while intracellular and associated cells protein was collected after ultrasonication treatment of cells. All of protein fraction was then characterized by SDS PAGE.

RESULTS

Construction of pY-SLPI Recombinant Plasmid

The optimization of annealing temperatures to amplify the full-length and mature forms of *SLPI* gene can be seen in Fig. 1. The annealing temperature for the PCR amplification of genes encoding *SLPI* was 62.5, 62.3 and 62.2 °C. The PCR produced a single band in size about ~339 bp, which is close to the theoretical size (Fig. 1).

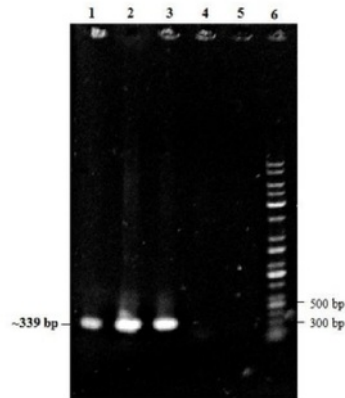


FIGURE 1. Optimization of annealing temperatures to amplify SLPI gene. Lane 1-5: annealing temperature at 62.5 °C, 62.3 °C, 62.2 °C, 61.9 °C, 61.7 °C, respectively, lane 6: 1 Kb DNA ladder.

This amplicon was ligated in-frame with HM1 signal peptide in a pYHM1 vector to create recombinant plasmid pY_SLPI. pY_SLPI was transformed into *E. coli* Top10. Thirty-two (32) transformants were obtained on LB medium containing ampicillin (Fig. 2).

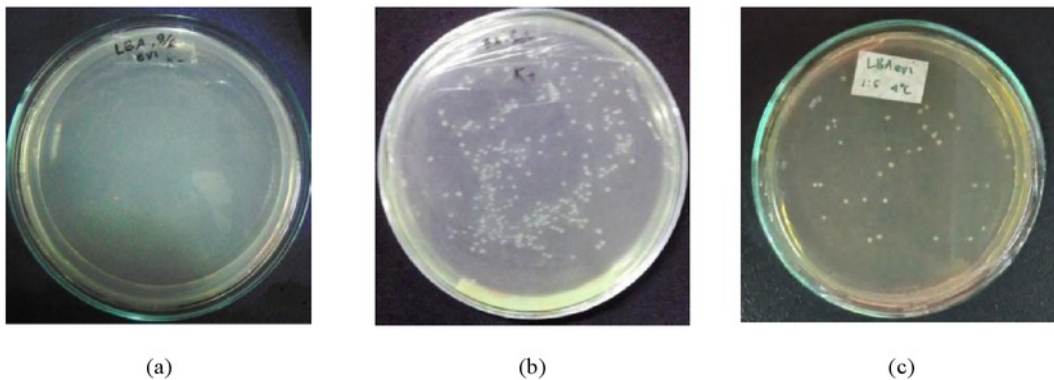


FIGURE 2. Transformant in *E. coli* TOP10. (a) negative control, (b) positive control (pYHM1), (c) Sample (pY_SLPI).

The recombinant plasmid of transformants was isolated and analyzed by single and double digestion and PCR amplification to confirm the presence of SLPI gene in the plasmid. Single band in size about 6 kilo bases (kb) were obtained after single digestion of recombinant plasmid of transformant no 31. Double digestion of recombinant plasmids of transformant 31 gave two DNA bands consist of vector 5.9 kb (pYHM1) and insert 339 bp (SLPI) (Fig 3a). Amplification of recombinant plasmid of transformant no 31 generated a single band size approximately 339 bp which corresponds to the theoretical size of the SLPI gene (Fig. 3b). These data indicated that transformant 31 carrying pY_SLPI

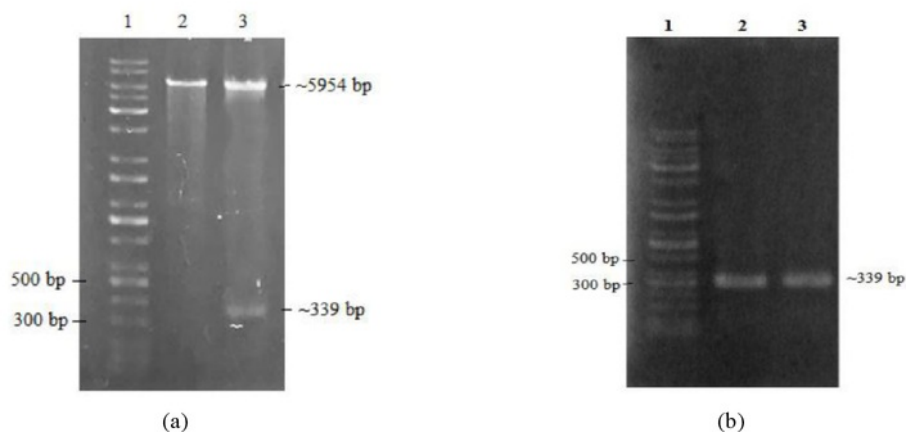


FIGURE 3. Restriction analysis and PCR amplification of recombinant plasmid of transformant 31. (a) Restriction analysis, lane 1: 1 kb DNA ladder, lane 2: pY_SLPI digested by EcoRI, lane 3: pY_SLPI digested by SmaI and EcoRI. (b) PCR amplification, lane 1: 1 kb DNA ladder, lane 2: positive control, lane 3: pY_SLPI.

The nucleotide sequence of a recombinant plasmid of transformant no 31 was determined to ensure the correct insert. An open reading frame of *SLPI* gene from ATG to TGA was found and in-frame with a HMI signal peptide. Nucleotides alignment using BLASTn NCBI showed 100% similarity of identity with SLPI from NCBI accession number EU116331.

The correct pY_SLPI recombinant plasmid was introduced into *S. cerevisiae* BJ1824 to produce SLPI. Fig. 4 shows that the pY_SLPI has been successfully subcloned into *S. cerevisiae* BJ1824 and generated four colonies.

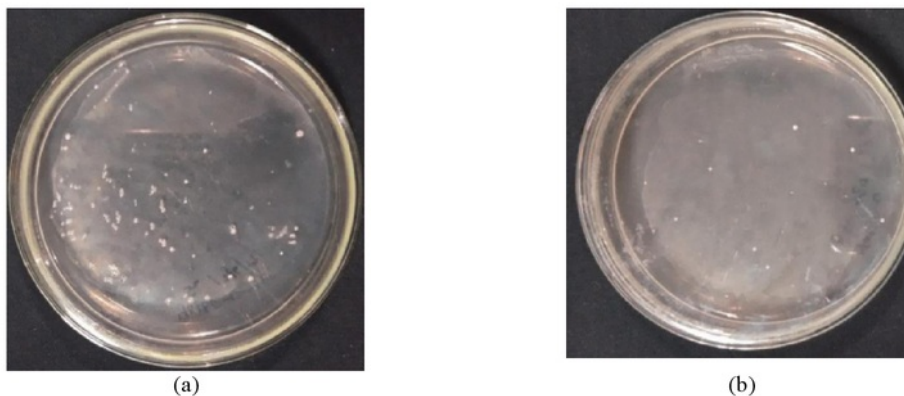
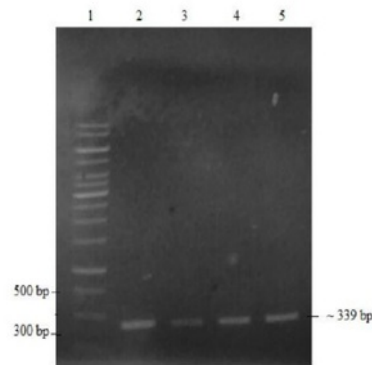


FIGURE 4. Transformant in *S. cerevisiae*. (a) positive control (pYHMI), (b) Sampel pY_SLPI.

Four yeast transformants were selected and characterized by colony PCR to confirm the presence of SLPI gene. The PCR produced a single band in size about ~339 bp, which is close to the theoretical size (Fig. 5). This result indicated that four yeast transformant harboring pY_SLPI.



14
FIGURE 5. Colony PCR of yeast transformants. Lane 1 : 1 Kb DNA ladder, lane 2-5: transformant no 1-4.

Expression of SLPI

An SDS PAGE analysis of the total intracellular and associated cells proteins showed the presence of protein band at ~16 kDa which close to the theoretical size of SLPI with additional HM1. However, no protein band at the same position was observed in extracellular protein (Fig. 6). It is indicated SLPI is expressed but not secreted.

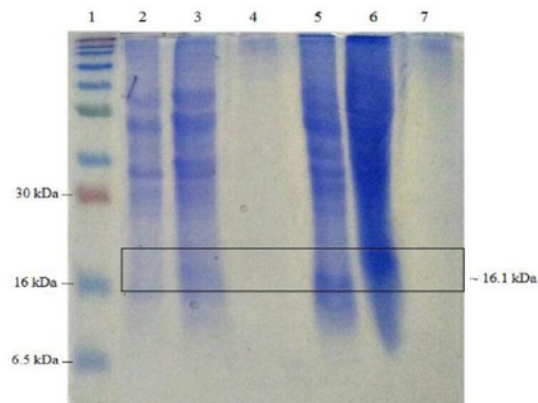


FIGURE 6. Coomassie stained 15 % SDS PAGE of SLPI expression. Lane 1: protein ladder, lane 2: associated cells proteins at 0 h, lane 3: intracellular protein at 0 h, lane 4: extracellular protein at 0 h, lane 5: associated cells proteins at 24 h, lane 6: intracellular protein at 24 h, lane 7: extracellular protein at 24 h.

DISCUSSION

S. cerevisiae is a widely used for the production of heterologous proteins. Besides known as safe microorganisms, yeast can also produce secreted proteins and modify heterologous protein. The secretion of recombinant proteins is desirable since a minimal amount of endogenous secreted protein, thus simplifying the protein purification process. Nevertheless, the secretory expression in yeast is bottleneck process that limits the yield

of recombinant protein. The factors that affected the secretion of recombinant protein i.e signal peptide, host, promoter and culture conditions¹⁷. Signal peptide mediates cotranslational translocation of protein into the endoplasmic reticulum (RE). Several signal peptides have been utilized to secreted recombinant protein. However, several recombinant proteins could not be secreted. It is difficult to predict which signal peptide is best for efficient secretion of protein¹⁵.

In this study, we used HM1 signal peptide to secrete recombinant SLPI. Like α factor, HM-1 signal peptide has pre-structure at M1-A19 and pro structure at L20-R30¹⁷. The result of SDS PAGE showed the presence of recombinant SLPI only in cells (Fig. 6). The absence of recombinant SLPI in medium culture, suggesting that HM1 signal peptide fused to SLPI was not recognized by signal recognition particle (SRP), thus preprotein can not enter into the lumen of the endoplasmic reticulum. Rapid folding of polypeptide from ribosome may also lead to protein aggregation prior to translocation. Fusion protein of SLPI and HM1 has entered into the RE lumen but is not recognized and cleaved by signal peptidase. An amino acid residue of mature SLPI began with MSGKS, whereas the amino acid residues of mature α -L-arabinofuranosidase began with MATKK. This condition suggests that signal peptidase could not recognize and not cleave the different amino acid in the junction between signal peptide and recombinant SLPI. However, this possibility ought to be proved with Western blotting analysis.

This result was similar to Stetler (1989) who used with two different signal peptide i.e invertase and α factor for SLPI secretion. α factor system generated incompletely processed and misprocessed of secreted SLPI, while invertase system result in unprocessed fusion protein and processed protein that remain in cells¹⁶.

CONCLUSION

In conclusion, we have successfully cloned SLPI gene into pYHM1 plasmid in *S. cerevisiae*. SLPI was expressed as a fusion protein with HM1 signal peptide and remain in cells.

ACKNOWLEDGMENTS

We want to acknowledge the Research and Development of Ministry [13](#) Health of Indonesia for the support of this research by providing grant trough RisbinIptekdok Program and the [Institute of Tropical Disease, Universitas Airlangga](#) for the use of its [facilities](#).

REFERENCES

1. T. Nukiwa, T. Suzuki, T. Fukuhara, and T. Kikuchi, *Cancer Sci.* **99**, 849–855 (2008).
2. N. R. Shine, S. C. Wang, K. Konopka, and C. P. Whitman, *Bioorg. Chem.* **30**, 249–263 (2002).
3. M. M. Gorecka, P. Majewski, B. Grygier, K. Murzyn, and J. Cichy, *Cytokine Growth Factor Rev.* **28**, 79–93 (2016).
4. G. Ma, T. Greenwell-Wild, and K. Lei, *J. Exp. Med.* **200**, 1337–1346 (2004).
5. G. S. Ashcroft, K. Lei, W. Jin, G. Longenecker, A. B. Kulkarni, T. G. Wild, H. H. Donze, G. McGrady Wahl, X. Y. Song, and S. M. Wahl, *Nat. Med.* **6**, 1147–1153 (2000).
6. C. C. Taggart, S. A. Cryan, S. Weldon, A. Gibbons, C. M. Greeny, E. Kelly, T. B. Low, S. J. O'Neill, and N. G. McElvaney, *J. Exp. Med.* **202**, 1659–1668 (2005).
7. Y. Mikami, T. Iwase, Y. Komiyama, N. Matsumoto, H. Oki, and K. Komiyama, *Mol. Immunol.* **67**, 568–574 (2015).
8. O. Wiedow, J. Harder, J. Bartels, V. Streit, and E. Christophers, *Biochem. Biophys. Res. Commun.* **909**, 904–909 (1998).
9. S. Doumas, A. Kolokotronis, and P. Stefanopoulos, *Infect. Immun.* **73**, 1271–1274 (2005).
10. M. G Newman, H. Takei, P. R. Klokkenvold, and F. Carranza. *Carranza's Clinical Periodontology* (W.B. Saunders Co, 2011).
11. M. Koizumi, A. Fujino, K. Fukushima, T. Kamimura, and M. T. Kamimura, *J. Synchrotron Radiat.* **15**, 308–311 (2008).

12. E. Munadziroh, S. Purnamasari, N. N. T. Puspaningsih, and W. T. Ismaya, *Biotechnol. Apl.* **34**, 2231–2234 (2017).
13. N. G. Fairbairn, M. A. Randolph, and R. W. Redmond, *JPRAS Open.* **67**, 662–675(2014).
14. S. W. Harcum, F. Collins, and R. J. Seely, *Biotechnol. Lett.* **15**, 943–948 (1993).
15. H. Feldmann. *Yeast Molecular Biology: A Short Compendium on Basic Features and Novel Aspects* (Adolf-Butenandt-Institut, 2005).
16. G. L. Stetler, C. Forsyth, T. Gleason, J. Wilson, and R. Thompson, *Nat. Biotechnol.* **7**, 55–60 (1989).
17. I. N. Wirajana, T. Kimura, K. Sakka, E. B. Wasito, S. E. Kusuma, and N. N. T. Puspaningsih, *Procedia Chem.* **18**, 69–74 (2016).

Hermansyah, Proceeding/2.11_Proceeding_Cloning of SLPI gene containing HM-1 signal peptide in Saccharomyces cerevisiae 12.43.06 AM 9.19.06 AM.pdf

ORIGINALITY REPORT

18%

SIMILARITY INDEX

PRIMARY SOURCES

- 1** Dewi Sondari, Aspiyanto, Athanasia S. Amanda, Evi Triwulandari, M. Ghozali, Melati Septiyanti, Imad Iltizam. "Characterization edible coating made from native and modification cassava starch", AIP Publishing, 2018
129 words — 4%
Crossref
- 2** Li, Z.. "Expression and characterization of recombinant human secretory leukocyte protease inhibitor (SLPI) protein from Pichia pastoris", Protein Expression and Purification, 200910
50 words — 2%
Crossref
- 3** Hiroshi Hashizume, Takayuki Ohta, Masaru Hori, Masafumi Ito. " Growth control of through dose of oxygen atoms ", Applied Physics Letters, 2015
42 words — 1%
Crossref
- 4** clincancerres.aacrjournals.org
Internet
30 words — 1%
- 5** Yeti Darmayati, Nur Fitriah Afianti. "Impact of slow release fertilizers on enhancing biodegradation in oil contaminated tropical sandy beach", AIP Publishing, 2018
29 words — 1%
Crossref
- 6** Hery Suwito, Ni'matuzahroh, Alfinda Novi Kristanti, Salwa Hayati et al. "Antimicrobial Activities and In silico Analysis of Methoxy Amino Chalcone Derivatives", Procedia Chemistry, 2016
28 words — 1%
Crossref

-
- 7 aiche.onlinelibrary.wiley.com 27 words — 1%
Internet
-
- 8 PAUL A. BATES. "Expression of Cysteine Proteinases by Metacyclic Promastigotes of *Leishmania mexicana*", *The Journal of Eukaryotic Microbiology*, 5/1994 26 words — 1%
Crossref
-
- 9 Monika Majchrzak-Gorecka, Pawel Majewski, Beata Grygier, Krzysztof Murzyn, Joanna Cichy. "Secretory leukocyte protease inhibitor (SLPI), a multifunctional protein in the host defense response", *Cytokine & Growth Factor Reviews*, 2016 24 words — 1%
Crossref
-
- 10 bioone.org 13 words — < 1%
Internet
-
- 11 T.D. Tetley. "PROTEINASE INHIBITORS | Secretory Leukoprotease Inhibitor and Elafin", Elsevier BV, 2006 13 words — < 1%
Crossref
-
- 12 Suryani D. Astuti, Putri S. Puspita, Alfian P. Putra, Andi H. Zaidan, Mochamad Z. Fahmi, Ardiyansyah Syahrom, Suhariningsih. "The antifungal agent of silver nanoparticles activated by diode laser as light source to reduce *C. albicans* biofilms: an in vitro study", *Lasers in Medical Science*, 2018 13 words — < 1%
Crossref
-
- 13 Purwani, Ni Nyoman, Handoko Darmokoesoemo, and Ni Nyoman Tri Puspaningsih. "Hydrolysis of Corncob Xylan using β -xylosidase GbtXyl43B from *Geobacillus Thermoleovorans* IT-08 Containing Carbohydrate Binding Module (CBM)", *Procedia Chemistry*, 2016. 9 words — < 1%
Crossref
-
- 14 studentsrepo.um.edu.my 9 words — < 1%
Internet
-
- 15 journals.plos.org 9 words — < 1%
Internet

9 words — < 1%

16 pub.uni-bielefeld.de
Internet

9 words — < 1%

17 Zhu, J.. "Conversion of Proepithelin to Epithelins",
Cell, 20021213
Crossref

9 words — < 1%

18 www.dentj.fkg.unair.ac.id
Internet

9 words — < 1%

19 researchspace.auckland.ac.nz
Internet

8 words — < 1%

20 Weldon, Sinead, and Clifford C. Taggart. "INNATE

8 words — < 1%

HOST DEFENSE FUNCTIONS OF SECRETORY
LEUCOPROTEASE INHIBITOR", Experimental Lung Research,
2007.

Crossref

21 Zhiguo Li, Allison Moy, Kirti Sohal, Carolyn Dam et
al. "Expression and characterization of recombinant
human secretory leukocyte protease inhibitor (SLPI) protein from
Pichia pastoris", Protein Expression and Purification, 2009

8 words — < 1%

Crossref

22 Toshihiro Nukiwa. "Secretory leukocyte peptidase
inhibitor and lung cancer", Cancer Science, 5/2008

8 words — < 1%

Crossref

23 A. B. Pratiwi, A. Damayanti, Miswanto.
"Electroencephalography epilepsy classifications
using hybrid cuckoo search and neural network", AIP Publishing,
2017

7 words — < 1%

Crossref

EXCLUDE QUOTES

ON

EXCLUDE MATCHES

< 1%

EXCLUDE

ON

BIBLIOGRAPHY