

# GENE EXPRESSION CHANGES AND ANTI- PROLIFERATIVE EFFECT OF NONI (*Morinda citrifolia*) FRUIT EXTRACT ANALYSED BY REAL TIME-PCR

*By Hermansyah Molekul*

**GENE EXPRESSION CHANGES AND ANTI-PROLIFERATIVE EFFECT OF NONI  
(*Morinda citrifolia*) FRUIT EXTRACT ANALYSED BY REAL TIME-PCR**

**PERUBAHAN EKSPRESI GEN DAN EFEK ANTI-PROLIFERASI EKSTRAK BUAH  
NONI (*Morinda citrifolia*) DIANALISIS DENGAN REAL TIME-PCR**

**Hermansyah<sup>1\*</sup>, Susilawati<sup>2</sup>**

<sup>1</sup> Department of Chemistry, Faculty of Mathematics and Natural Sciences,  
Sriwijaya University, Palembang, Indonesia

<sup>2</sup> Faculty of Medicine, Sriwijaya University, Palembang, Indonesia

\*email : hermansyah@unsri.ac.id

**Received** March 15, 2017; **Accepted** May 10, 2017; **Available online** May 30, 2017

**ABSTRACT**

To elucidate the anti-proliferative effect of noni (*Morinda citrifolia*) fruit extract for a *Saccharomyces cerevisiae* model organism, analysis of gene expression changes related to cell cycle associated with inhibition effect of noni fruit extract was carried out. Anti-proliferative of noni fruit extract was analyzed using gene expression changes of *Saccharomyces cerevisiae* (strains FY833 and BY4741). Transcriptional analysis of genes that play a role in cell cycle was conducted by growing cells on YPDade broth medium containing 1% (w/v) noni fruit extract, and then subjected using quantitative real-time polymerase chain reaction (RT-PCR). Transcriptional level of genes *CD20* (*Cell Division Cycle-6*), *CDC20* (*Cell Division Cycle-20*), *FAR1* (*Factor ARrest-1*), *FUS3* (*FUSsion-3*), *SIC1* (*Substrate/Subunit Inhibitor of Cyclin-dependent protein kinase-1*), *WHI5* (*WHIskey-5*), *YOX1* (*Yeast homeobOX-1*) and *YHP1* (*Yeast Homeo-Protein-1*) increased, oppositely genes expression of *DBF4* (*DumbBell Forming*), *MCM1* (*Mini Chromosome Maintenance-1*) and *TAH11* (*Topo-A Hypersensitive-11*) decreased, while the expression level of genes *CDC7* (*Cell Division Cycle-7*), *MBP1* (*Mlul-box Binding Protein-1*) and *SWI6* (*SWItching deficient-6*) relatively unchanged. These results indicated that gene expression changes might associate with anti-proliferative effect from noni fruit extract. These gene expressions changes lead to the growth inhibition of *S.cerevisiae* cell because of cell cycle defect.

**Keywords :** *Morinda citrifolia*, *Noni fruit*, *Saccharomyces cerevisiae*, anti-proliferative

**ABSTRAK**

Elusidasi efek anti-proliferasi buah mengkudu (*Morinda citrifolia*) pada organisme model *Sacharomyces cerevisiae*, melalui analisis perubahan ekspresi gen-gen berkaitan dengan siklus sel yang berasosiasi dengan efek inhibisi ekstrak buah noni. Anti-proliferasi ekstrak buah noni dianalisis menggunakan perubahan ekspresi gen *Saccharomyces cerevisiae* (galur FY833 dan BY4741). Analisis transkripsi gen-gen yang berperan dalam siklus sel dilakukan dengan menumbuhkan sel pada medium cair YPDade mengandung 1% (b/v) ekstrak buah mengkudu, kemudian dianalisis menggunakan *quantitative real time polymerase chain reaction* (RT-PCR). Level transkripsi gen-gen *CD20* (*Cell Division Cycle-6*), *CDC20* (*Cell Division Cycle-20*), *FAR1* (*Factor ARrest-1*), *FUS3* (*FUSsion-3*), *SIC1* (*Substrate/Subunit Inhibitor of Cyclin-dependent protein kinase-1*), *WHI5* (*WHIskey-5*), *YOX1* (*Yeast homeobOX-1*) dan *YHP1* (*Yeast Homeo-Protein-1*) meningkat, berbeda untuk ekspresi gen-gen *DBF4* (*DumbBell Forming-4*), *MCM1* (*Mini Chromosome Maintenance-1*) dan *TAH11* (*Topo-A Hypersensitive-11*) mengalami penurunan, sedangkan level ekspresi gen-gen *CDC7* (*Cell Division Cycle-7*), *MBP1* (*Mlul-box Binding Protein-1*) and *SWI6* (*SWItching deficient-6*) relatif tidak berubah. Hasil ini mengindikasikan bahwa perubahan ekspresi gen berasosiasi dengan efek anti-proliferasi ekstrak buah noni. Perubahan ekspresi gen tersebut menuju hambatan pertumbuhan sel *S.cerevisiae* karena kerusakan siklus selnya.

**Kata kunci:** *Morinda citrifolia*, Buah Mengkudu, *Saccharomyces cerevisiae*, dan anti-proliferasi.

**INTRODUCTION**

*Morinda citrifolia* L. (Noni plant), a unique horticultural plant belonging to Rubiaceae is a native plant from Southeast Asia to Australia and also spread in Polynesia, India, Central and Northern South America (Chan-Blanco, Vaillant, Perez, & Brat, 2006). In Indonesia, it is known as

mengkudu. However, it has many various local names such as kudu, pace, cengkudu, kemudu (Jawa); bengkudu, mengkudu, eodu (Sumatera); wangkudu, manakudu (Nusa Tenggara), mangkudu, wangkudu, labanan (Kalimantan). This plant species is now cultivated throughout many tropical areas and various cultures throughout the world.

Some chemical compounds were explored from *M.citrifolia* plants such as fatty acids and alcohol glycosides and numerous iridoid were reported from fruit (Potterat and Hamburger, 2007). A new iridoid glycoside, citrifoside and new anthraquinone, 1,5,15-tri-O-methylmorindol, together with 24 known compounds were isolated from leaves of *M.citrifolia* (Takashima *et al.*, 2007). Three new glycosides were also isolated from the fruits of Noni (Wang *et al.*, 2002). An immunomodulatory polysaccharide-rich substance from the fruit juice was also discovered as an antitumor potential (Furusawa, Hirazumi, Story, & Jensen, 2003). A new anthraquinone, 1,5,15-tri-O-methylmorindol and two new saccharide fatty acid esters have been isolated as a potential cancer chemopreventive constituents (Akihisa *et al.*, 2007). Many others secondary metabolites have been isolated from this *M. citrifolia*.

As a folk medicine, noni plant is a reputed medicinal plant used to treat a wide variety of disease in Polynesia, south-east Asia, Australia, and Caribian (Takashima *et al.*, 2007). Almost all part of noni plants such as roots, stems, barks, leaves, and fruits have been used folk medicine in many countries including in Indonesia. Moreover, it has been reported that noni fruit has a broad range therapeutic as the traditional folk medicine plants in some countries included Indonesia. Almost all of noni plant parts such as roots, stems, bark, leaves, flower, and fruit could be used in herbal remedies for cancer, infection, arthritis, diabetes, asthma, hypertension, and pain (Wang *et al.*, 2002). Although the plant has also wide range of uses as a treatment for dysentery, heartburn liver disease, arthritis, diabetes, high blood pressure, muscle aches, menstrual difficulties, headaches, heart disease, AIDS, cancers, gastric ulcers, sprains, mental depression, senility, poor digestion, atherosclerosis, blood vessel problems, and drug addiction (Siddiqui, Sattar, Ahmad, & Begum, *et al.*, 2007). However, most of the mechanism for these effects remains unknown.

The budding yeast *Saccharomyces cerevisiae* a model organism since it offers many advantages such as it can easily be manipulated. Due to its simple growth requirements and genetic tractability, this organism is a powerful tool for investigating the molecular regulation of cell cycle control

(Calvert and Lannigen, 2010). In the cell cycle progression of *S.cerevisiae*, bud emergence is a standard marker for entry into S-phase and thus defines the G1/S transition, while in large budded cells, nuclear migration and spindle formation are markers for the G2/M transition, whereas completion of anaphase can be determined by the presence of divided nuclei (Calvert, Lanniga, & Pemberton, 2008). In this research, the budding yeast *S.cerevisiae* was used as a model organism to identify and explore the anti-proliferative or anticancer mechanism. We found that methanol extract of noni fruit could inhibit proliferative of *S. cerevisiae* especially in the G1/S phase of cell cycle progression (Hermansyah, Sugiyama, Kaneko & Harashima, 2009) and this data indicated that noni fruit extract has anti-proliferative effect for organisms. By using real time Polymerase Chain Reaction (PCR), expression level of some genes involved in G1/S transition was checked in this experiment.

## MATERIALS AND METHODS

### Yeast Strains and Culture Conditions

Strains used in this study were yeast *S.cerevisiae* strain FY833 and BY4741 with genotype *MATa ura3-52 his3-Δ200 leu2Δ1 lys2Δ202 trp1Δ63* and *MATa ura3Δ1 leu2Δ0 lys2Δ0 ura3Δ0*, respectively (NBRP, YGRC or National BioResource Project/Yeast Genetic Research Center, Japan ([http://yeast.lab.nig.ac.jp/nig/index\\_en.html](http://yeast.lab.nig.ac.jp/nig/index_en.html))) (Winston, Dollard, & Ricupero-Hovasse, 1995). YPD media was prepared YPD broth (Sigma-Aldrich Co.) with 0.4 mg/mL adenine. Culture condition of yeast *S.cerevisiae* strains were grown at 30 °C.

### Equipment

Equipment used in this study were maceration chamber, evaporator, Petri disk, Erlenmeyer flask, orbit shaker incubator, electrophoresis set (Bio-rad), spectrophotometer UV-vis (Bio-rad), and real-time PCR (Applied Biosystems).

### Extraction of Noni Fruit

Fresh noni fruits were cut into thin slices and dried naturally in the shade. The dried sample (200 g) was extracted by maceration using 1 L methanol as a solvent at room temperature for several days occasional shaking and repeated three times with

methanol to produce macerate. The extract was evaporated using a rotary evaporator to obtain the crude extract for further assay.

#### Phenotypic Assay

*S.cerevisiae* strain cells were streaked on YPDade media agar with and without 3% noni fruit extract and incubated at temperature 30 °C for two days.

#### Yeast RNA Isolation

RNA isolation was performed based on manufacturer's protocol. RNA was isolated by the TRIzol (Thermo Fisher Scientific) using Multi-Beads Shocker (MBS) (Yasui Kikai, Japan) and used for quantitative analysis of mRNA content by real-time (RT) PCR. Yeast cells ( $OD_{660} = 1.0$ ) grown in 25 mL YPD liquid medium with or without methanolic extract of *M.citrifolia* fruit was harvested by centrifugation cell, pellets were optionally chilled in liquid nitrogen and stored in -80 °C. A 1 mL of TRIzol and 60% volume of glass beads. Cells then were disrupted with multi-beads shocker with the following condition: ten cycles of active for 60 seconds and inactive for 60 seconds at 0 °C at 2,500 rpm. Cells lysis were checked with a microscope (normally 90-100% lysis occurs). Then, punctuate the bottom of the screw-cap tube with a needle (when punctuate, screw cap should be a little bit opened to decrease pressure). Place this tube into a 2.0-mL microfuge tube, and spin the tubes in the benchtop centrifuge at 3,000 rpm for 1 min at 4 °C.

After vortexing the collected samples, incubate for 5 min at room temperature, to permit the complete dissociation of nucleoprotein complexes. Add 0.2 mL of chloroform per ml Trizol reagent. Shake tubes vigorously by hand for 15 sec and incubate them at room temperature for 2-3 min. Centrifuge the samples at no more than 12,000 x g for 15 min at 4 °C. The following centrifugation, the mixture separates into a lower red, phenol-chloroform phase, an interphase, and colorless upper aqueous phase. RNA remains exclusively in the aqueous phase. The volume of the aqueous phase is about 60% of the volume of Trizol reagent used for homogenization. Transfer the aqueous phase to a fresh tube, and save the organic phase if isolation of DNA or protein is desired.

Precipitate the RNA from the aqueous phase by mixing with isopropyl alcohol and 3 M NaOAc. Samples were vortexed and stored at -20 °C for at least 30 min and centrifuge at no more than 12,000 xg for 10 min at 4 °C. The RNA precipitate, often invisible before centrifugation, forms a gel-like pellet on the side and bottom of the tube. Remove supernatant and again spin down. Wash the RNA pellet once with 70% ethanol, adding at least 1 ml of 75% ethanol per 1 mL of TRIzol reagent used for the initial homogenization. Mix the sample by vortexing and centrifuging at no more than 12,000xg for 5 min at 4 °C. Dry it for 5 min (not to let the RNA pellet dry completely as this will decrease its solubility) and dissolved in 40 µL of sterile water.

#### Transcriptional Analysis using RT-PCR

cDNA was synthesized from mRNA using the cDNA Archived kit (Applied Biosystems) according to the Manufacturer's Protocol. Single-stranded cDNA from total RNA was synthesized using 2X RT master mix on ice consisting of 2.0 µL 10xRT buffer, 0.8 µL 25X dNTP Mix (100 mM), 2.0 µL 10X RT Random Primers, 1.0 µL MultiScribe™ Reverse Transcriptase, 1.0 µL RNase inhibitor, 3.2 µL nuclease-free H<sub>2</sub>O. Then, 2X RT master mix were pipetted into each well of a 96-well reaction plate or tube, and 10 µL of RNA were added into each well. Samples were put on thermal cycler with the following program to synthesize cDNA, step 1: 10 min on temperature 25 °C, step 2: 120 min on temperature 212 °C, step 3: 5 sec on temperature 85 °C, and step 4: keep on temperature 4 °C. The resulted cDNA was used as the template for quantitative real-time PCR with real time-PCR system using following primer pairs (Sigma-Aldrich, Co. Japan) and SYBR Green RT-PCR Reagents kit (Applied Biosystems).

The primer pairs used in this experiment designed were presented in Table 1. The thermal cycling condition included 2 min at 50 °C and 10 min at 95 °C. 7 Serial 5 fold dilutions (ACT1 cDNA 1000 ng/40 µL, 200 ng/40 µL, 40 ng/40 µL, 8 ng/40 µL, 1.6 ng/40 µL, 0.32 ng/40 µL, and 0.064 ng/40 µL used in this experiment to generate a standard curve. Thermal cycling proceeded with 40 cycles of 95 °C for 0.5 min and 60 °C for 2 min (Gibson, Heid, & William, 1996).

**Table 1.** Primer used in this experiment

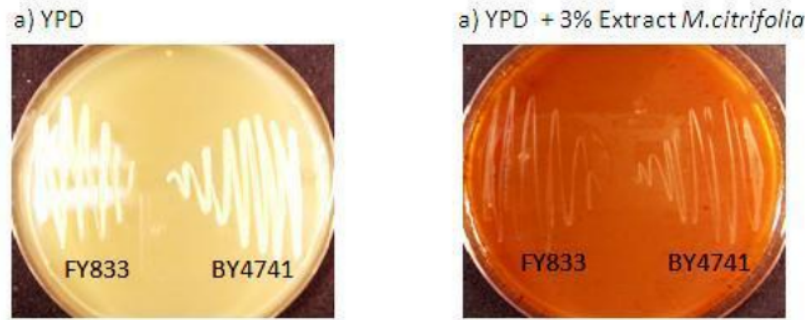
No	Primer	Nucleotide Sequences	Sequence (bp)
1	KfRT- <i>ACT1</i>	5'- TGGTATGTGTAAAGCCGGTTTTG -3'	(23)
	KrRT- <i>ACT1</i>	5'- CATGATACCTTGGTGTCTTGGTCTA -3'	(25)
2	KfRT- <i>YOX1</i>	5'- CGATGATCGCGGAACCA-3'	(17)
	KrRT- <i>YOX1</i>	5'- GCGCTTCCACAGATCTTG-3'	(20)
3	KfRT- <i>YHP1</i>	5'- TCCACAGGCTGTGGATTTCTTA-3'	(22)
	KrRT- <i>YHP1</i>	5'- CCAGCTTCTGGGCTTGGATAA-3'	(22)
4	KfRT- <i>TAH11</i>	5'- CAGCCTCACCAACAGGCTTT-3'	(20)
	KrRT- <i>TAH11</i>	5'- GTAGGCAGCATTCTGTTTCAGCAT-3'	(23)
5	KfRT- <i>SIC1</i>	5'- CAAGAAAGTGAAGACGAGGAAGACA-3'	(25)
	KrRT- <i>SIC1</i>	5'- TCATCTGATGCAAAGGGATTTTT-3'	(23)
6	KfRT- <i>MCM1</i>	5'- CCTCACCAACAGGCTTTTGC-3'	(20)
	KrRT- <i>MCM1</i>	5'- GTAGGCAGCATTCTGTTTCAGCAT-3'	(23)
7	KfRT- <i>MBP1</i>	5'- TCAATGGCCACGTCCGTAT-3'	(19)
	KrRT- <i>MBP1</i>	5'- ATGGATTACTATCGGCAAAATCG-3'	(23)
8	KfRT- <i>FUS3</i>	5'- GTGGCCACACGTTGGTACAG-3'	(20)
	KrRT- <i>FUS3</i>	5'- CGTCCATGGCCCTTGAGTAT-3'	(20)
9	KfRT- <i>FAR1</i>	5'- GGAAGAGATGGATCCGGTGTAG-3'	(22)
	KrRT- <i>FAR1</i>	5'- TTGTCCATCCGTCCCAATTT-3'	(20)
10	KfRT- <i>DBF4</i>	5'- GCTGTCCAAGTCAGCAAAGGT-3'	(21)
	KrRT- <i>DBF4</i>	5'- TGCCATTCCAGCAATTCC-3'	(18)
11	KfRT- <i>CDC20</i>	5'- GGAGCTTCGCAAAACAAGGT -3'	(20)
	KrRT- <i>CDC20</i>	5'- TGGCGACGCGTTTGG -3'	(15)
12	KfRT- <i>CDC7</i>	5'- CAAACACCTCCTATGGTCACCAT-3'	(23)
	KrRT- <i>CDC7</i>	5'- CAGATCCACCCCATTTACATTGT-3'	(23)
13	KfRT- <i>CDC6</i>	5'- TCTGAACACAGGTCCGATTCAC-3	(22)
	KrRT- <i>CDC6</i>	5'- CATATCAAGCTGGGCAGTCTTG-3	(22)
14	KfRT- <i>WHI5</i>	5'- GGCCCATCCGCGAAAT-3'	(16)
	KrRT- <i>WHI5</i>	5'- TGCAGCTTGACTAACGCGTAA-3'	(21)
15	KfRT- <i>SWI6</i>	5'- TGAAGGCGATATTTCCAAACTATTAG-3'	(26)
	KrRT- <i>SWI6</i>	5'- CTGCGGGAAGTTGATTTTCGT-3'	(20)

## RESULTS AND DISCUSSION

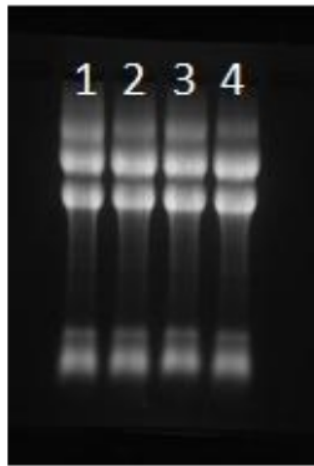
Noni fruit has been reported to have broad therapeutic effects. However, the mechanism for this effect remains unclear (Krishnaiah, Nithyanandam, and Sarbatly, 2012). In this study, noni fruit was extracted using methanol as a solvent. Some studies involved the methanolic extract of noni fruit, which showed antimicrobial, antioxidant, pesticidal, anti-HIV, anti-leishmaniasis, and hypotensive activities (Siddiqui *et al.*, 2007).

The present study is to utilize yeast *S.cerevisiae* as a model organism to identify an anticancer medicinal plants candidates with anti-proliferative properties. Identification of antiproliferative properties for anticancer

plant candidates can be used *S.cerevisiae* as a model. The growth of *S.cerevisiae* was inhibited their proliferation by 3% (w/v) noni fruit extract (**Figure 1**). Treatments with 3% (w/v) noni fruit extract have inhibited proliferation of *S.cerevisiae*. Both of *S.cerevisiae* strains FY833 and BY4741 showed growth on YPDade agar medium in the absence of noni fruit extract where yeast colonies grew well after one-day incubation at 30 °C. The inhibited growth of cell can be observed through sensitive growth phenotypic. Some gene expression changes lead to the sensitive growth phenotypic of *S.cerevisiae* on the medium (Hermansyah, *et al.*, 2009).



**Figure 1.** The phenotypic sensitive growth of *S.cerevisiae* in the presence of 3% noni fruit extract (a) and without extract (b). Phenotypic growth was observed after incubated at 30 °C for 24-48 hours



**Figure 2.** Electrogram showing RNA samples. RNA isolated from cells cultures without noni fruit extract (1 and 2) and with 1% (w/v) noni fruit extract. Yeast cells ( $OD_{660} = 1.0$ ) grown in 25 mL YPD liquid medium with or without noni fruit extract. RNA was isolated by the TRIzol method using Multi-Beads Shocker (MBS). Finally, RNA samples were dissolved in 40  $\mu$ L of sterile water.

Prior to analyzing the gene expression level changes, RNA samples were isolated from the cells cultured in YPDade treated with 1% (w/v) noni fruit extract, and in YPDade without noni fruit extract as a positive control. RNA samples were isolated using TRIzol method successfully as shown on RNA agarose electrophoresis data (**Figure 2**). RNA samples were then converted into cDNA.

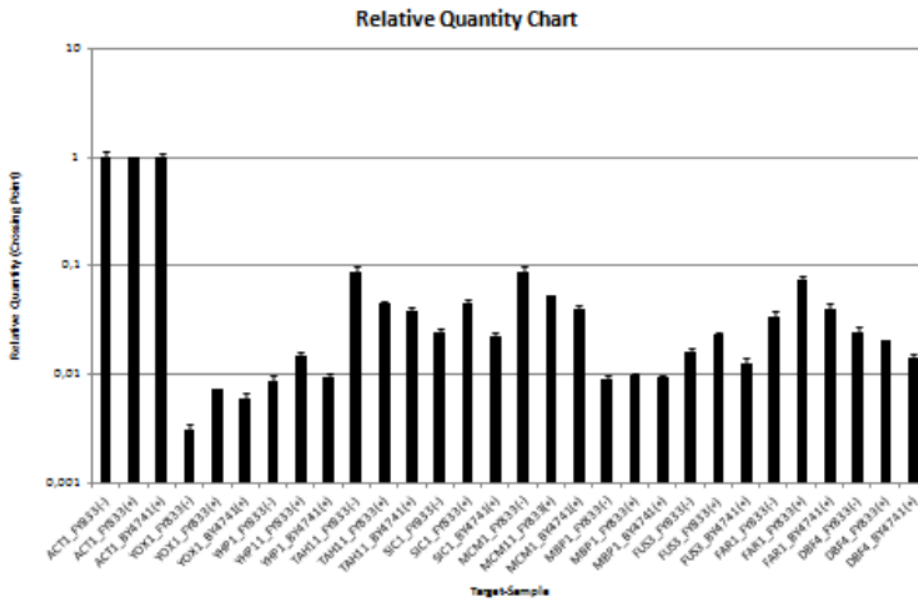
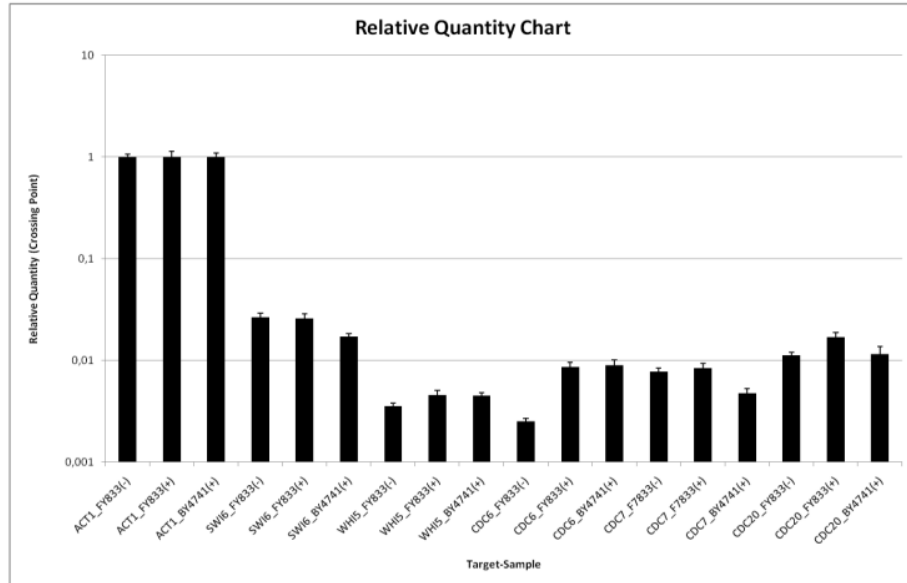
Some genes such as *SWI6*, *CDC6*, *CDC7*, *WHI5*, *CDC20*, *YOX1*, *YHP1*, *TAH11*, *SIC1*, *MCM1*, *MBP1*, *FUS3*, *FAR1*, and *DBF4* involved in cell cycle regulation in *S.cerevisiae* (Rubinstein, Hazan, Chor, Pinter, & Kassir, 2013; <http://www.yeastgenome.org>). In this analysis, the *ACT1* gene was commonly used as reference gene. Those genes were quantitatively measured their gene expression level. Gene expression changes were observed between FY833 strain cells cultured in the presence of 1%(w/v) noni

extract compared with FY833 strain cells in the absence of 1% (w/v) noni fruit extract. Further observation, we comparing gene expression changes between strain FY833 and BY4741 cells in the presence of 1% noni fruit extract.

The results showed that gene expression level of *WHI5*, *CDC6*, *CDC20*, *YOX1*, *YHP1*, *SIC1*, *FUS3*, and *FAR3* increased, while gene expression of *TAH11*, *MCM1*, and *DBF4* decreased (**Figure 3**). The level of each gene *SWI6*, *CDC7*, and *MBP1* were similar level in both conditions either with or without noni fruit extract treatment. Further observation, in the presence of 1% (w/v) noni fruit extract, the expression level of those genes differed between in *S.cerevisiae* strain FY833 and BY4741. It observed that in strain FY833, level of each gene *SWI6*, *CDC7*, *CDC20*, *YOX1*, *YHP1*, *TAH11*, *SIC1*, *MCM1*, *FUS3*, *FAR1*, and *DBF4* were higher than in the strain BY4741. The expressions level of genes *MBP1*, *WHI5*,

and *CDC6* were almost same in both strains (Fig. 3). *CDC6* is an essential regulator of DNA replication protein that also participates in the activation and maintenance of

checkpoints and in some cases affects gene expression (Casmiro, Crosariol, Loro, Li, & Pestell, 2013).



**Figure 3.** Transcriptional analysis using RT-PCR. Strand cDNA was synthesized using a high capacity cDNA Archived kit (Applied Biosystems). The resulted cDNA was used as the template for quantitative real-time PCR with r5-time PCR system (Applied Biosystems) using following primer pairs (Sigma-Aldrich, Co. Japan). Thermal cycling proceeded with 40 cycles of 95 °C for 0.5 min and 60 °C for 2 min. The samples were carried out in triplicate.

18

Its function is the assembly of pre-replicative complexes at origins of replication during the G1 phase of the cell division cycle, activation and maintenance of the checkpoint mechanism that coordinate S phase and mitosis, and recent studies have unveiled its proto-oncogenic activity (Borlado and Mendez, 2007). In the presence of 1% noni fruit extract, among those changed gene expressions, *CDC6* or cell division cycle-6 was the highest expression changes, more than two folds. Overexpression of genes could explain the function of genes. Overexpressed human *CDC6* gene may suffer the nuclear-cytosolic translocation (Alexandrow & Hamlin, 2004).

Overexpression of *WHI5* in *swi6Δ* mutant inhibits cell growth on plates (Adames *et al.*, 2015). Overexpression of *CDC20* overrides the G2/M-phase arrest caused by DNA damage, allowing cells to undergo anaphase and to enter the subsequent division cycle (Lim, Goh, & Surana, 1998). Transcriptional level of genes increased, oppositely genes expression of decreased, while the expression level of genes relatively unchanged.

## CONCLUSION

The noni fruit extract inhibited growth *S.cerevisiae* strain FY833 and BY4741 showed by the gene expression which is expression level of *CDC6*, *CDC20*, *FAR1*, *FUS3*, *SIC1*, *WHI5*, *YOX1*, and *YHP1* increased while *DBF4*, *MCM1*, and *TAH11* decreased. However, noni fruit extract did not change the expression level of genes *CDC7*, *MBP1* and *SWI6*. Gene expression changes might associate with anti-proliferative effect from noni fruit extract.

## ACKNOWLEDGEMENT

This work was supported by Fundamental Research grant Directorate General Higher Education 2016.

## REFERENCES

Adames N.R., Schuk P.L., Chen, K.T., Murali, T.M., Tyson, J.J., & Peccoud, J. (2015). Experimental testing of a new integrated model of the budding yeast START transition. *Molecular Biology of the Cell*, 26 (22), 3966-3984.

Akihisa, T., Matsumoto, K., Tokuda, H.,

Yasukawa, K., Seino, K., Nakamoto, K., Kuninaga, H., Suzuki, T., & Kimura, Y. (2007). Anti-inflammatory and potential cancer chemopreventive constituents of the fruits of *Morinda citrifolia* (Noni). *Journal of Natural Product*, 70, 754-757.

Alexandrow, M.G., & Hamlin, J.L (2004). Cdc6 chromatin affinity is unaffected by Serine-54 phosphorylation, S-phase progression, and overexpression of cyclin A. *Molecular Cellular Biology*, 24(4), 1614-1627.

Borlano, L.R., & Mendez, J. (2008). CDC6; from DNA replication to cell cycle checkpoints oncogenesis. *Carcinogenesis*, 29(2), 237-43.

Calvert, M.E. & Lannigan, J. (2010). Yeast cell cycle analysis: combining DNA staining with cell and nuclear morphology. *Current Protocols in Cytometry*, 9(32), 1-6.

Calvert, M.E., Lanniga, J.A., & Pemberton, L.F. (2008). Optimization of yeast cell cycle analysis and morphological characterization by multispectral imaging flow cytometry. *Cytometry*, 73(9), 825-33.

Casimiro, M.C., Crosariol, M., Loro, E., Li, Z., & Pestell, R.G. (2013). Cyclins and cell cycle control in cancer and disease. *Genes & Cancer*, 3(11-12), 649-657

Chan-Blanco, Y., Vaillant, F., Perez, A.M., & Brat, P. (2006). The noni fruit (*Morinda citrifolia* L.) : A review of agricultural research, nutritional and therapeutic properties. *Journal of Food Composition Analysis*, 19, 645-654.

Furusawa, E., Hirazumi, A., Story, S., & Jensen, J. (2003). *Morinda citrifolia* (Noni) on sarcoma 180 ascites tumor in mice. *Phytotherapy Research*, 17(10), 1158-64.

Gibson, U.E., Heid, C.A., & William, P.M. (1996). A novel method for real-time quantitative RT-PCR. *Genome Research*, 6(10), 995-1001.

Hermansyah, Sugiyama, M., Kaneko, Y., & Harashima, S. (2009). Yeast protein phosphatase Ptp2p and Msg5p are involved in G1-S transition, *CLN2* transcription, and vacuole morphogenesis. *Archive of Microbiology*, 191, 721-733.

Krishnaiah, D, Nithyanandam, R., & Sarbatly, R. (2012). *Phytochemical constituents*



- and activities of Morinda citrifolia L., Phytochemicals-A Global perspective of their role in nutrition and health, Croatia : InTech*
- Lim, H.H., Goh, P.Y., & Surana, U. (1998). Cdc20 is essential for the cyclosome-mediated proteolysis of both Pds1 and Clb2 during M phase in budding yeast. *Current Biology*, 8(4), 231-237.
- Potterat, O., & Hamburger, M. (2007). *Morinda citrifolia* (Noni) fruit-phytochemistry, pharmacology, safety. *Planta Medica*, 73(3), 191-199.
- Rubinstein A., Hazan, O., Chor, B., Pinter R.Y., & Kassir, Y. (2013). The effective application of a discrete transition model to explore cell-cycle regulation in yeast. *BMC Research Notes*, 6(311), 1-13
- Siddiqui, B.S., Sattar, F.A., Ahmad, F., & Begum, S. (2007). Isolation and structure elucidation of chemical constituents from the fruit of *Morinda citrifolia* Linn. *Archives of Pharmacol Research*, 30(8), 919-23
- Takashima, J., Ikeda, Y., Komiyama, K., Hayashi, M., Kishida, A., & Ohsaki, A. (2007). New constituents from the leaves of *Morinda citrifolia*. *Chemical and Pharmaceutical Bulletin*, 55(20), 343-5.
- Wang, M.Y., West, B.J., Jensen, C.J., Nowicki, D., Su, C., Palu, A.K., & Anderson, G. (2002). *Morinda citrifolia* (Noni) : a literature review and recent advances in Noni research. *Acta Pharmacologica Sin*, 23(12), 1127-41.
- Winston F., Dollard C., & Ricupero-Hovasse, S.L. (1995). Construction of a set of convenient *Saccharomyces cerevisiae* strains that are isogenic to S288C. *Yeast* 11, 53-55.

# GENE EXPRESSION CHANGES AND ANTI-PROLIFERATIVE EFFECT OF NONI (*Morinda citrifolia*) FRUIT EXTRACT ANALYSED BY REAL TIME-PCR

---

ORIGINALITY REPORT

---

19%

SIMILARITY INDEX

---

PRIMARY SOURCES

---

- 1 [ir.library.osaka-u.ac.jp](http://ir.library.osaka-u.ac.jp) 61 words — 2%  
Internet
- 2 Bina S. Siddiqui. "Isolation and structural elucidation of chemical constituents from the fruits of *Morinda citrifolia* Linn", *Archives of Pharmacal Research*, 08/2007 50 words — 1%  
Crossref
- 3 Meredith E. K. Calvert. "Optimization of yeast cell cycle analysis and morphological characterization by multispectral imaging flow cytometry", *Cytometry Part A*, 09/2008 47 words — 1%  
Crossref
- 4 T. K. Lim. "Edible Medicinal And Non-Medicinal Plants", Springer Science and Business Media LLC, 2013 45 words — 1%  
Crossref
- 5 [www.jbc.org](http://www.jbc.org) 39 words — 1%  
Internet
- 6 Uma Lakshmipathy, Brad Love, Christopher Adams, Bhaskar Thyagarajan, Jonathan D. Chesnut. "Chapter 8 Micro RNA Profiling", Springer Science and Business Media LLC, 2007 38 words — 1%

- 
- 7 M. Bego, J. Maciejewski, S. Khaiboullina, G. Pari, S. St. Jeor. "Characterization of an Antisense Transcript Spanning the UL81-82 Locus of Human Cytomegalovirus", *Journal of Virology*, 2005  
31 words — 1%  
Crossref
- 
- 8 [www.spandidos-publications.com](http://www.spandidos-publications.com)  
Internet 29 words — 1%
- 
- 9 "Protocol for High-Throughput miRNA Profiling of the Rat Brain", *Neuromethods*, 2016.  
25 words — 1%  
Crossref
- 
- 10 [s3.amazonaws.com](http://s3.amazonaws.com)  
Internet 25 words — 1%
- 
- 11 Luis R. Borlado, Juan Méndez. "CDC6: from DNA replication to cell cycle checkpoints and oncogenesis", *Carcinogenesis*, 2008  
24 words — 1%  
Crossref
- 
- 12 [eprints.lancs.ac.uk](http://eprints.lancs.ac.uk)  
Internet 24 words — 1%
- 
- 13 [www.jove.com](http://www.jove.com)  
Internet 24 words — 1%
- 
- 14 A. Shirwaikar, Y. Kamariya, B. Patel, S. Nanda, V. Parmar, S. Khan. "Methanol Extract of the Fruits of *Morinda citrifolia* Linn., Restores Bone Loss in Ovariectomized Rats", *International Journal of Pharmacology*, 2011  
21 words — 1%  
Crossref
- 
- 15 Muller, J.C.. "Morinda citrifolia Linn (Noni): In vivo and in vitro reproductive toxicology", *Journal of Ethnopharmacology*, 20090121  
21 words — 1%

16 Stojanovic, Lora. "DNA Methyltransferase Inhibitors in Combination with PARP inhibitors Generate Synthetic Lethality in BRCA-proficient Ovarian Cancer.", University of Maryland, Baltimore, 2018

ProQuest

21 words — 1%

17 [carcin.oxfordjournals.org](http://carcin.oxfordjournals.org)

Internet

21 words — 1%

18 [lib.bioinfo.pl](http://lib.bioinfo.pl)

Internet

21 words — 1%

19 Arroyo, C.M.. "Neutralization effects of interleukin-6 (IL-6) antibodies on sulfur mustard (HD)-induced IL-6 secretion on human epidermal keratinocytes", Environmental Toxicology and Pharmacology, 200406

Crossref

20 words — 1%

20 Jacob L. Steenwyk, Dana A. Opulente, Jacek Kominek, Xing-Xing Shen et al. "Extensive loss of cell-cycle and DNA repair genes in an ancient lineage of bipolar budding yeasts", PLOS Biology, 2019

Crossref

20 words — 1%

21 Jun Xu, Li Wang, Jiandong Liu, Li Qian. "Chapter 12 In Vitro Conversion of Murine Fibroblasts into Cardiomyocyte-Like Cells", Springer Science and Business Media LLC, 2021

Crossref

17 words — 1%