

Spatial analysis of soil texture and peat soil by NDSI method at swamp area of Banyuasin District, Indonesia

Indrayani^{1,2}, Erika Buchari³, Dinar D.A. Putranto^{3*} and Edward Saleh⁴

¹*Environmental Science Postgraduate Program of Sriwijaya University, Palembang, Indonesia*

²*Civil Engineering Department, State Polytechnic of Sriwijaya, Palembang, Indonesia*

³*Civil Engineering Department, Faculty of Engineering, Sriwijaya University, Palembang, Indonesia*

⁴*Agriculture Engineering Department, Faculty of Agriculture, Sriwijaya University, Palembang, Indonesia*

(Received 9 November, 2017; accepted 30 December, 2017)

ABSTRACT

Road construction in the swampy area should certainly face many problems related to the soil characteristics that are composed of soft soils. The understanding of soil condition to swamp area is needed to determine the road trace and can be done using the remote sensing technology. The use of Normalized Difference Soil Index (NDSI) method is an alternative to the characterizing of the soil condition. The location of soils sampling is determined by NDSI, while the specific gravity, property index, and soil texture is analyzed by laboratory analysis. The classification of soil condition using NDSI method on composite band 65 obtained the range of reflectance values ranging (-1.0336) - (-0.4582) for water body, (-0.4582) - (-0.0645) for not open spaces and (-0.0645) - (0.4300) for open spaces. The classification of soil characteristics in the swamp area in Banyuasin regency consists of 3 classes, which are clay type with diameter <0.002 mm, medium soil with diameter 0.002 - 0.075 mm, and slightly rough for fine sandy soil with diameter 0.075 - 0.425 mm. In addition, in the study area, the peat depth is approximately measured as 50 - 100 cm and 100 - 200 cm.

Key words : Spatial analysis, Soil texture, Peatland, Citra Landsat 8, NDSI

Introduction

The development of the swampy area continuously increases as a form of limited productive land used to fulfill the human needs. Some government efforts have been developed in the developing swamp areas included various sectors such as plantation, agriculture, and fisheries activities. To support the development of swamp areas, the construction of road infrastructure is a necessity, but the main problem faced in the implementation of road construction in the swampy area is the problem of soil characteristics which are generally soft soils and very soft soils

which mostly consist of peatlands (Suriadikarta and Sutriadi, 2007; Arsyad *et al.*, 2014). The road construction built on the expansive ground generates many problems such as the damaging to the road pavement which requires high cost during the construction, maintenance, and rehabilitation cost before the pavement reaches the age of the plan etc. (Harry, 2007; Suryoto *et al.*, 2017). Furthermore, these problems are needed in consideration of road construction in the swampy area. In order to find out the condition of the land in the study field, it is necessary to investigate the soil characteristics where any investigation will require enormous costs. To re-

Corresponding author's email: iiend_sumantri@yahoo.com

*Corresponding author's email: dinar.dputranto@gmail.com

duce the cost, some technology can be used to help the field investigation such as Geographical Information System (GIS). GIS using remote sensing technology is one of the economical alternatives which can find out the potential land cover (Wondrade *et al.*, 2014; Karakus *et al.*, 2015). One of the remote sensing technologies that can be used for the recognition of soil characteristics is Landsat image 8 (Li and Chen, 2014).

Landsat 8 in remote sensing technology has onboard operational land imager (OLI) and thermal infra red sensor (TIRS) sensor which have a total of 11 channels which consists of 9 channels (band 1-9) located on OLI and 2 channels bands 10 and 11 on TIRS (Lapan, 2015; USGS, 2016). Some methods are used in the interpretation of the image using the wavelength method such as Normalized Different Vegetation Index (Gandhi *et al.*, 2015), Normalized Different Wetness Index-NDWI (Haikal, 2014), and Normalized Different Soil Index-NDSI (Deng *et al.*, 2015). According to Deng *et al.*, (2015), The development of a spectral sample of vegetation and soil samples is conducted to distinguish normalized indexes for increasing soil information. These differences can be interpreted using the NDSI method. The study aimed to obtain the thematic map showing the location of soil and peat texture to facilitate the decision making in determining the road trace which traversed at a location in the swamp area.

Materials and Methods

Study Area

The study is located at Banyuasin regency which is between 1° 37'32.12" to 3° 09'15.03" LS and 104° 02'21.79" to 105° 33'38.5" BT. Banyuasin is one regency which has wide swamp area where the area has 1.183.299 hectares or approximately 12.18% of the total area of South Sumatera province (Kabupaten Banyuasin, 2011). Fig. 1 shows the administrative maps of Banyuasin regency.

Classification Method

In this study, the interpretation of Landsat 8 image that downloaded from the United States Geological Survey on the scene: path 124/row 062 is used to obtain the classification of open area, unopened area, and waters. The image data processing is processed through stages: (i) pre-processing (cutting the image that serves to limit the area of research and

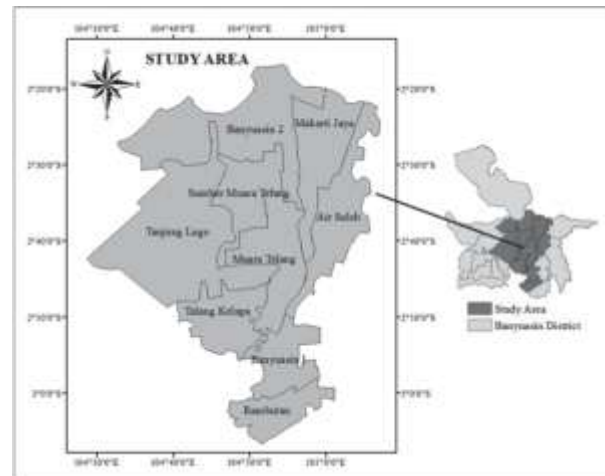


Fig. 1. Study Area

reduce the size of image files as well as geometric and radiometric correction; (ii) data processing (color composite, digital image interpretation for sharpening, smoothing filter, contrast, multispectral classification on Landsat image 8) and NDSI transformation; and (iii) field test stages and laboratory tests to obtain the specific gravity, properties index, and soil texture.

Soil texture and peat texture analysis are observed through soil moisture field by separating open area and unopened area based on NDSI value, by combining band 5 (NIR) at wavelength 0.845 – 0.885 and band 6 (SWIR) at length 1.560 – 1.660 waves which are shortwave infrared can be useful for notifying the soil on the surface conditions of the earth. The equation showed below.

$$\text{NDSI} = (\text{SWIR} - \text{NIR}) / (\text{SWIR} + \text{NIR})$$

The characteristics of OLI sensor on satellite landsat 8 has 9 bands namely band 1 (costal aerosol) with wavelength 0.433–0.453; band 2 (blue) with wavelength 0.450 – 0.515; band 3 (green) with wavelength 0.525 – 0.600; band 4 (red) with wavelength 0.630–0.680; band 5 (NIR) with wavelength 0.845–0.885; band 6 (SWIR 1) with wavelength 1.560–1.660; band 7 (SWIR 2) with wavelength 2.100–2.300; band 8 (panchromatic) with wavelength 0.500–0.680; and band 9 (cirrus) with wavelength 1.360–1.390 (Lapan, 2015).

Results

Classification of Open Spaces, Not Open Spaces, and Water Body

In this study, the NDSI method is used to classify

unopened area which is the vegetation and settlement areas), open area (land), and waters area. The main problem occurred in the study area is the type of land which is a vegetated swamp area. The emitted wave will directly affect the vegetation and interrupt the process of classifying by NDSI. Soil and peat soil texture classification is characterized using laboratory analysis and then approached using a land map from Landsystem (Sukarman *et al.*, 2013), Sumatra Peat Map from Wetland Indonesia (Wahyunto *et al.*, 2003), and peat area map of Banyuasin regency (Kabupaten Banyuasin, 2017).

In order to distinguish unopened area (vegetation and settlement), open area (land), and waters area, the samples are taken in Landsat imagery with a combination of 6 and 5 band composites, as in Fig. 2a. Fig. 2b shows the average reflectance value in band 5 (NIR) and band 6 (SWIR). Furthermore, the reflectance value is used to determine the characteristics of land as the open, unopened, or water area. Both SWIR band spectrum 6 with wavelength 1.560 – 1.600 μm and NIR spectrum on band 5 with wavelength 0.845 – 0.885 μm have low reflectance value when exposed at water area, that is 0.0161 at SWIR and 0.0444 on NIR. The spectral value on the SWIR

spectrum in band 6 tends to rise in an open area or if it is exposed to a ground object, i.e., equal to 0.2735. While the spectral value in band 5 rises in the unopened area (vegetation and settlement) that is equal to 0.2815 and decreased in the open area or if the object is hit by 0.2195.

The NDSI value shows the difference between SWIR in band 6 and NIR in band 5. The negative average value of NDSI indicates that the area is unopened area whereas the positive average values indicate the open area (the object is exposed to the soil). Fig. 3 showed the values of NDSI in each classification. Furthermore, the classification of NDSI is divided into 3 classes. The reflectance value of each classification can be seen in Table 1. From Table 1, it can be analyzed that the classification is based on

Table 1. Classification of the Reflectance Value to differentiate open spaces, not open spaces, and water body

No.	Classification	Reflectance Value
1.	Water Body	(- 1,0336) – (- 0,4582)
2.	Not Open Spaces	(- 0,4582) – (- 0,0645)
3.	Open Spaces	(- 0,0645) – (0,4300)

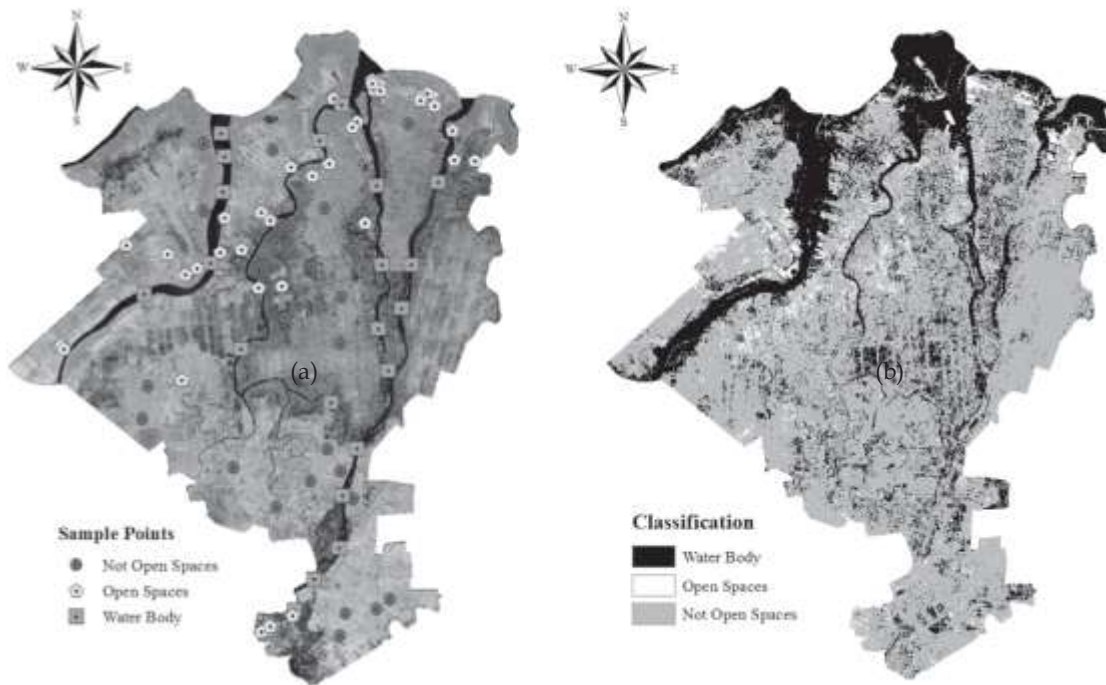


Fig. 2. Soil conditions identification on the composite Band 65. (a) sample point of the determination of Reflectance Value, (b) classification result of open spaces, not open spaces, and water body.

the reflectance value of the waters area, the unopened area (vegetation and settlement), and the open area (ground object), as in Fig.3.

Fig.3 showsthatthehighlyvegetatedareatends toclassifiedintothewatersareabecauseintheareas with dense vegetation, there will have a high wetness level due to water level contained in the leaf. Furthermore, the spectrum in band 6 reflects the small spectral value if it is exposed to water. The accuracyintheinterpretingoftheconditionofopen area is carried out using confusion matrix. The method will compare the matching data result of classificationofopenareawiththeresultdataofinspection directly in thefield.

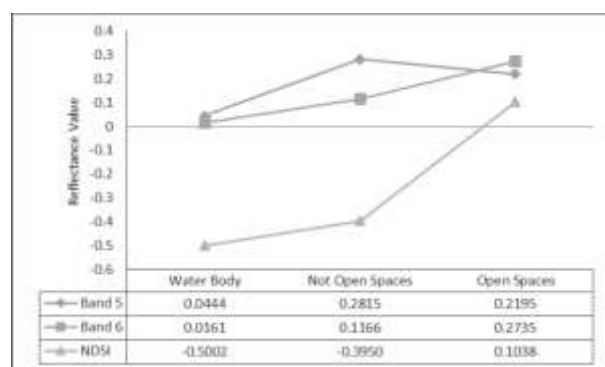


Fig. 3. The Reflectance value in Band 6 (SWIR), Band 5 (NIR) and NDSI

The test accuracy of open spaces, not openspaces, andwaterbody

Field measurements are conducted from Februaryto April 2017. The measurements are conducted at 30 sample points which determined by direct landuse andinundationchecks.Fig.4representsdescriptionoftheconditionoftheopenarea.Theaccuracy of the classification results is tested using a confusion matrix, as in Table 2. From Table 2, it can be seen thatthepercentageoftheoverallrateis86.67%

which indicates that the classification results of not open spaces (vegetation and settlement), open spaces (land), and water body can be used in the making of soil condition thematic maps in the swampareasbasedonthereflectancevalueclassification.

Soil and Peat Soil Texture Tests

Soil and peat soil texture classification are carried out by taking some soil samples in the open and unopened areas. Soil samples are taken at 10 locationsinwhicheachlocationistaken3pointsinseveral study area using handbore. Furthermore, the property index testing is performed to determine the soil type and soil texture based on AASHTO classification. The location point of soil sampling is presented in Fig. 5. The results of properties index testing and filter analysis are shown in Table3.

According to wetland map (Wahyunto *et al.*, 2003), location 6 is a peat area with a depth of <50 cm,whereasatlocation1andlocation5arepeatsoil with a depth of 50-100 cm. The laboratory analysis shows that the soil characteristics at location 1,and location5areclaygrayedsoilwhereasatlocation6 shows the clay type soil. Laboratory tests are also done by measuring the soil density. The results showthatthedensityofsoilatlocation1, andlocation5and6are2.66and2.46,respectively.Basedon thesoildensity,itcanbeconcludedthatinthestudy area, the existing soil type is not kinds of peat soil because the peat soil has a low soildensity.

Soil and Peat Texture Classification

The classification of soil texture in the study areas divided into 3 classes: fine soil for loamy soil, fine soil for dense soils (based on laboratory test results showingthatinswampareasconsistingofclayand clay soil), and peat. The peatland classification is taken from Wetland Peatland Data of Indonesiain

Table 2. The confusion matrix on the classification of open spaces, not openspaces, and water body

Description	Reference Data(FieldData)			Sum	User Accuracy	
	Not Open Spaces	Open Spaces	Water Body			
Classification Data	Not Open Spaces	13	1	1	15	86,67
	OpenSpaces	1	10	0	11	90,91
	WaterBody	1	0	3	4	75,00
	Sum	15	11	4	30	
	Produser’s Accuracy	86,67	90,91	75,00		86,67

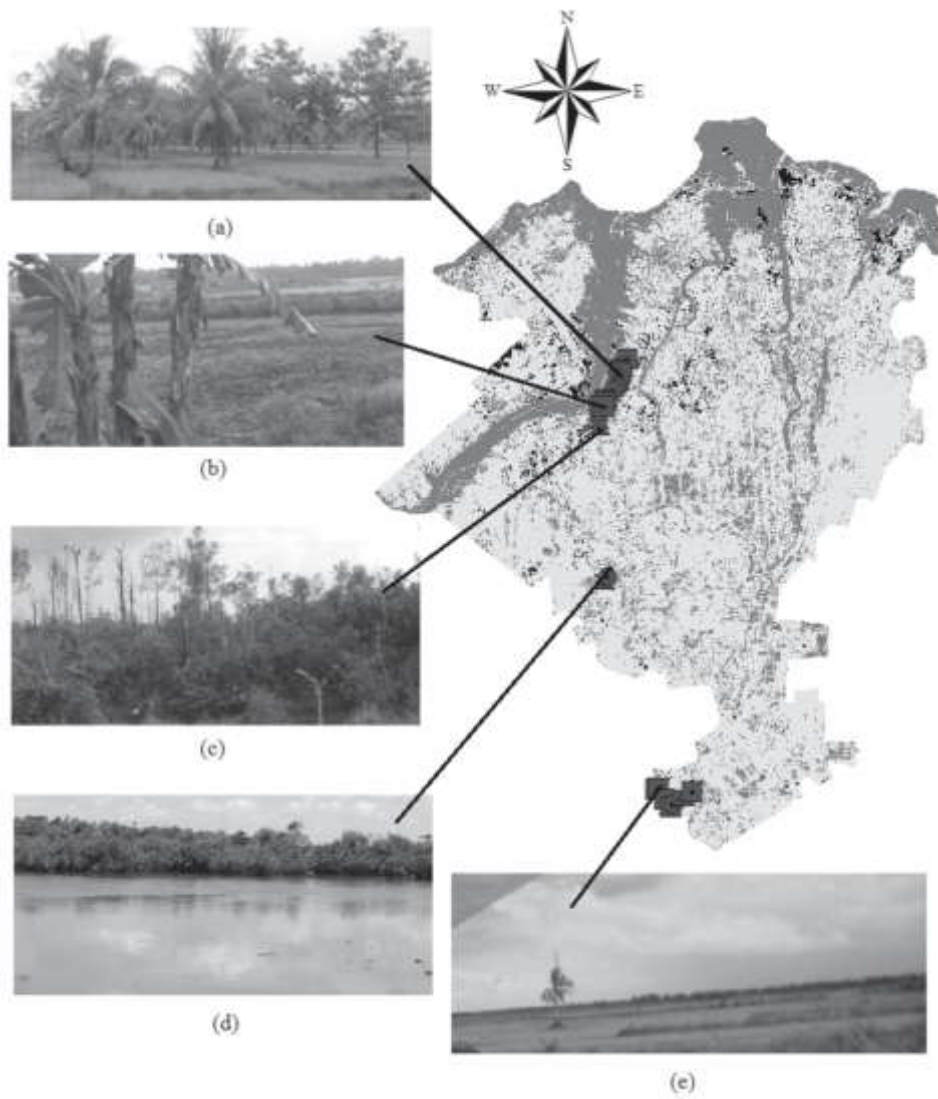


Fig.4.CrossCheckofClassification(a)NotOpenSpaces(FieldRiceandPlantation);(b)OpenSpaces(Prepa- ration for Field Rice); (c) Not Open Spaces (Shurb); (d) Water Body (River); (e) Open Spaces(Field)

Table 3. Test results and analysis of Filter Properties Index based on AASHTO classification.

No	Description	Score Avarange			Granules Size (mm)
		Specific Gravity	Soil Classification	Soil Type Classification	
1	Location 1	2.66	A-4	Silty Soil	0.002 - 0.075
2	Location 2	2.59	A2-4	Silty or clayey gravel and sand	0.075 – 0.425
3	Location 3	2.68	A-4	Silty Soil	0.002 - 0.075
4	Location 4	2.60	A-6	Clayey Soil	< 0.002
5	Location 5	2.46	A-5	Silty Soil	0.002 - 0.075
6	Location 6	2.46	A-7	Clayey Soil	< 0.002
7	Location 7	2.42	A-5	Silty Soil	0.002 - 0.075
8	Location 8	2.53	A-7	Clayey Soil	< 0.002
9	Location 9	2.21	A-7	Clayey Soil	< 0.002
10	Location 10	2.17	A-7	Clayey Soil	< 0.002

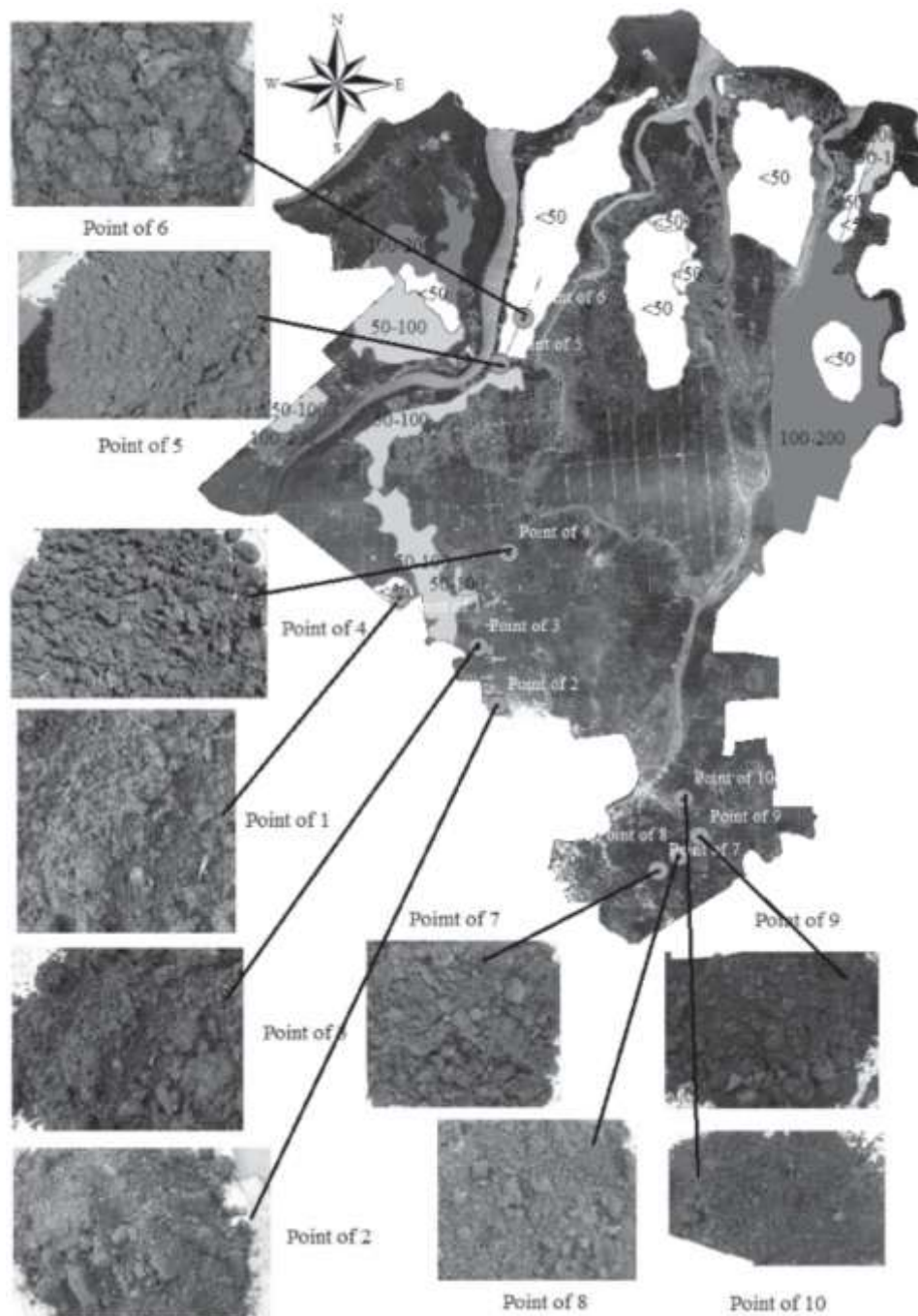


Fig. 5. Soil Sampling Locations

Sumatara region (Wahyunto *et al.*, 2003) which has a depth of 100–200 cm. Peat depth specifications are based on unused depths in agricultural and plantation activities. While the classification of soil texture is determined based on the results of research in the laboratory and compared with the landscape map

(Sukarman *et al.*, 2013). The results show that the texture of the soil present in the swamp area consists of fine structure and slightly fine, so the classification of soil is only divided into 3 classes: fine texture for clay soil with grain size <0.002 mm, slightly smooth texture for soil with grain size of $0.002-0.075$,

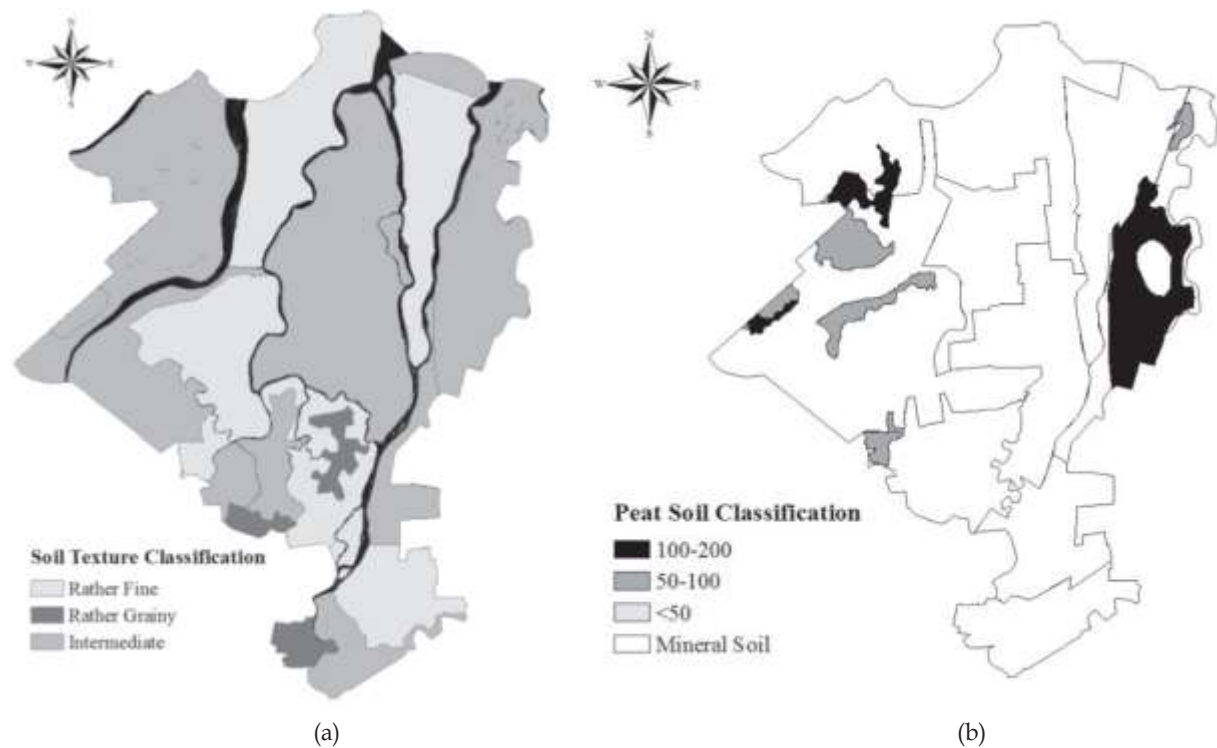


Fig. 6. Result of classification. (a) Soil texture, (b) Peat soil.

and peat soil. The delineation of soil texture is based on the river boundary. The classification of soil texture and peat soil can be seen in Fig. 6.

Discussion

Potit *et al.*, (2005) calculated NDSI to find the relationship between groundwater and soil contents from infrared waves and near infrared waves. Two shortwave infrared channels and long waves from MODIS on channels 5 and 6 are selected. The results show that groundwater content at 10 cm depth has the best linear relationship with channel 6 based NDSI.

The NDSI method cannot determine the soil texture and peat soil classification because the wavelength is not directly exposed to the soil object. According to Deng *et al.*, (2015), the development of spectral values of vegetation and soil is carried out to distinguish the normalized index of the soil. These differences can be interpreted using the NDSI method but the classification can only be determined for identification the open area, unopened area, and waters. The recognition of soil and peat

texture are conducted by laboratory tests based on samples which are taken in the open areas obtained from the results of classification. Based on the classification obtained from the laboratory test, the texture of the soil in the swamp area in Banyuasin regency consists of the clay; clay greyed soil and fine sand. From the classification of soil conditions using the NDSI method, the composite band 65 obtained the range of reflectance values (-1.0336) - (-0.4582) for waters, (-0.4582) - (-0.0645) for the unopened area and (-0.0645) - (0.4300) for open area. The soil classification in swamp area is divided into 3 classes: soft for clay type with diameter < 0.002 mm, medium for soil with diameter 0.002 - 0.075 mm, and rather rough for sandy soil with diameter 0.075 - 0.425 mm. While the peat soil has a depth between 50 - 100 cm and 100 - 200 cm.

Conclusion

Based on the classification of soil conditions using the NDSI method, the composite band 65 obtained the range of reflectance values (-1.0336) - (-0.4582) for water body, (-0.4582) - (-0.0645) for not open

spaces, and $(-0.0645) - (-0.4300)$ for open spaces. The soil classification in the swamp area is divided into 3 classes based on the diameter of soil: soft for clay type with diameter < 0.002 mm, medium for soil with diameter $0.002 - 0.075$ mm, and rather rough for sandy soil with diameter $0.075 - 0.425$ mm. The peat soil has a depth between $50 - 200$ cm.

References

- Arsyad, D.M. and Saidi, B.B. dan Enrizal. 2014. Pengembangan Inovasi Pertanian di Lahan Rawa Pasang Surut Mendukung Kedaulatan Pangan. *Pengembangan Inovasi Pertanian*. 7(4) : 169-176.
- Deng, Y., Wu, C., Miaoli and Chen, R. 2015. RNDI : A Ratio Normalized Different Soil Index for Remote Sensing of Urban/ Suburban Environments. *International Journal of Applied Earth Observation and Geoinformation*. 39: 40 - 48.
- Gandhi, M.G., Parthiban, S., Thummalu, N. and Christy, A. 2015. NDVI: Vegetation Change Detection Using Remote Sensing and GIS - A Case Study of Wellore District. *Procedia Computer Science*. 57:1199 -1210.
- Haikal, T. 2014. *Analisis Normalized Difference Wetness Index (NDWI) dengan Menggunakan Data Citra Satelit Landsat 5 TM (Studi Kasus : Provinsi Jambi Path/Row : 125/61)*. Tesis. Departemen Geofisika dan Meteorologi. Fakultas Matematika dan Ilmu Pengetahuan Alam, Bogor: Institut Pertanian Bogor.
- Harry, C.H. 2007. *Kajian Sebab-sebab Kerusakan Perkerasan Jalan di Ruas Jalan Demak-Kudus Terkait dengan Karakteristik Tanah-Dasar (Subgrade)*. Prosiding Konferensi Nasional Transportasi dan Geoteknik. Jurusan Teknik Sipil, Fakultas Teknik. Yogyakarta: Universitas Gadjah Mada.
- Karakus, C.B., Cerit, O. and Kavak, K.S. 2015. Determination of Land Use/ Cover Changes and Land Use Potential Sivas City and its Surroundings Using Geographical Information System (GIS) and Remote Sensing (RS). *Procedia Earth and Planetary Science*. 15: 454-461.
- Kabupaten Banyuasin, 2011. *Rencana Tata Ruang Wilayah Kabupaten Banyuasin 2011 - 2031*. Badan Perencanaan Pembangunan Daerah dan Penelitian Pengembangan. Pangkalan Balai: Kabupaten Banyuasin.
- Kabupaten Banyuasin, 2017. *Area Gambut Banyuasin*. Badan Perencanaan Pembangunan Daerah dan Penelitian Pengembangan. Pangkalan Balai: Kabupaten Banyuasin.
- Lapan, 2015. *Pedoman Pemanfaatan Data Landsat-8 untuk Deteksi Daerah Tergenang Banjir (Inundated Area)*. Pusat Pemanfaatan Penginderaan Jauh. Jakarta: Lembaga Penerbangan dan Antariksa Nasional.
- Li, S. and Chen, X. 2014. A New Bare-Soil Index For Rapid Mapping Developing Areas Using Landsat 8 Data. *The International Archives of the Photogrammetry, Remote Sensing and Spatial Information Sciences*. 40(4) : 139-144.
- Potitthep, S., Ishii, R. and Suzuki, R. 2010. *The Potential of Normalized Difference Soil Index (NDSI) for Soil Water Content Estimation in Mongolia*. Postdoctoral Researcher. Japan Agency for Marine-Earth Science and Technology. Kanagawa: Research Institute for Global Change.
- Sukarman, Nugroho, K. and dan Sulaeman, Y. 2013. Perkembangan dan Permasalahan Sistem Klasifikasi Tanah di Indonesia. *Jurnal Sumberdaya Lahan*. 7(2) : 97-112.
- Suriadikarta, D.A. and dan Sutriadi, M.T. 2007. Jenis-Jenis Lahan Berpotensi Untuk Pengembangan Pertanian di Lahan Rawa. *Jurnal Litbang Pertanian*. 26(3):115-122.
- Suryoto, Siswoyo, D.P. and Setyawan, A. 2017. The evaluation of functional performance of national roadway using three types of pavement assessments methods. *Procedia Engineering*. 171 :1435-1442.
- Wahyunto, Ritung, S. dan Subagjo, H. 2003. *Maps of Area of Peatland Distribution and Carbon Content in Sumatera, 1990 - 2002*. Bogor: Wetlands International-Indonesia Programme and Wildlife Habitat Canada (WHC).
- Wondrade, N., Dick, Q.B. and Tveite, H. 2014. GIS Based Mapping of Land Cover Changes Utilizing Multi-Temporal Remote Sensed Image Data In Lake Hawassa Watershed, Ethiopia. *Environ Monit Assess*. 186 :1765-1780.
- USGS. 2016. *Landsat 8 (L8) Data Users Handbook*. U.S. Geological Survey. South Dakota: Department of the Interior.