

Phylogenetic of Featherback Chitala sp from South Sumatra Based on Cytochrome C Oxidase Subunit I (COI) Gene

By Dade Jubaedah

PAPER • OPEN ACCESS

Phylogenetic of Featherback *Chitala* sp from South Sumatra Based on Cytochrome C Oxidase Subunit I (COI) Gene

To cite this article: Y Anjarsari *et al* 2021 *IOP Conf. Ser.: Earth Environ. Sci.* **810** 012009

View the [article online](#) for updates and enhancements.

You may also like

- [Study of mtDNA COI Gene Polymorphism and Relationship With Some Productive Traits in Awassi Sheep](#)
Ahmed Ismael Khalaf and Nasr Noori Al-Anbari
- [DNA barcoding of snakeskin gourami *Trichogaster pectoralis* and blue gourami *Trichogaster trichopterus* based on cytochrome c oxidase subunit I \(COI\) gene](#)
M Syaifudin, D Jubaedah, D Yonarta et al.
- [Microstructure, magnetism and magnetotransport of epitaxial \$\text{Sm}_{1-x}\text{Nd}_x\text{Sr}_y\text{MnO}_3\$ thin films](#)
M K Srivastava, Sandeep Singh, P K Siwach et al.

Phylogenetic of Featherback *Chitala* sp from South Sumatra Based on Cytochrome C Oxidase Subunit I (COI) Gene

Y Anjarsari¹, M Syaifudin^{1*}, D Jubaedah¹, F H Taqwa¹, D Yonarta¹

¹Program Study of Aquaculture, Faculty of Agriculture, Universitas Sriwijaya, Indonesia

*msyaifudin@fp.unsri.ac.id

Abstract. The featherback *Chitala* sp in Indonesia inhabit riverine of Sumatra, Java and Kalimantan. Featherbacks have been protected as threatened species. This research aims to identify the sequence of Cytochrome C Oxidase Subunit I (COI) gene of mtDNA, and construct the phylogenetic trees between species of featherbacks in South Sumatra. This research was conducted in March–August 2020. The methods used in barcoding species and determining phylogenetic i.e., DNA isolation, DNA amplification using PCR and sequencing of COI gene regions of mtDNA. The COI gene was sequenced by PCR (*Polymerase Chain Reaction*) with optimum annealing temperature 50°C for 30s with 35 cycles. After editing, sequence length of the COI gene of featherbacks was 621 base pairs (bp) nucleotide. Based on BLAST analysis, specimen CLP2 from PT PLN Indralaya had the highest similarity (99.28%) to *C. lopis* (Malaysia), then 98.88% to the same species from Kampar River, Riau. Specimens from Musi River (CLS1, CLS 3) and PT PLN (CLP3) indicated the highest similarity of 95.19% with *C. chitala* from India. The phylogenetic trees showed that *Chitala* formed four sub-clusters and it was clearly distant between species *C. lopis* and *C. chitala* (bootstrap value =73).

1. Introduction

Chitala is a genus of fish of the family Notopteridae. Based on Fishbase (2019), there are 6 species of *Chitala*, namely *Chitala lopis*, *C. blanci*, *C. borneensis*, *C. chitala*, *C. hypselonotus* and *C. ornata*. They are native to freshwater in South and Southeast Asia, and commonly known as the Asian knifefishes or featherbacks. Three of them are found in Indonesia, namely giant featherback *Chitala lopis* (Sumatra, Java and Borneo), *C. borneensis* and *C. hypselonotus* (Borneo and Sumatra). The distribution of featherbacks in the Musi River was in the downstream to the middle zone such as the 15-l area around Borang, Meriak River, to Musi Rawas [1]. *C. chitala* distributed in Asia, including Indus, Ganges-Brahmaputra and Mahanadi river basins in India, however it was reported in Malaysia and Indonesia based on *Chitala lopis* [2], while *Chitala lopis*, the largest fish in the genus, known as the giant featherback or Indonesian Featherback is a freshwater fish discovered in India, Pakistan, Bangladesh, Sri Lanka, Nepal, Thailand, and Indonesia [3].

The annual production of featherbacks in Indonesia has continued to decline steadily from 8,000 tonnes (1991), 5,000 tonnes (1995) to 3,000 tonnes (1998) [4]. The annual production of this species in the Kampar River has also decreased sharply from 156.9 tonnes (2014) to 123.9 tonnes (2015) [5]. *Chitala lopis* found in river drainages in Western and Central Java has not been recorded from this region in over 160 years therefore it has been evaluated as Extinct. Threats in the region have resulted in habitat degradation extremely that has directed to the extirpation of many large-bodied freshwater fish species, and include pollution from industrial, domestic, and agricultural inputs, extensive and unsustainable fishing activities, land conversion acutely for urban and agricultural growth [6]. With the significant decrease in biodiversity, species extinction raises the need for the conservation of



biodiversity [7]. Species identification supported by DNA barcoding will allow more information on fish diversity to the fisheries managers and ecologists who create the policies for the conservation and sustainable of fisheries resources [8].

The majority of the fish species described to date have been identified using a traditional analyses of morphological characters, thus not accounting for the existence of cryptic taxa, and many areas are still to be explored [9]. DNA barcoding is a method of fast species identification using short DNA sequences [10]. The cytochrome oxidase subunit I (COI) gene is a protein coding in mitochondrial DNA that has been widely used as a tool for identifying animal species, investigate evolutionary process with high resolution [11] and exhibits 5-10 times higher variability than single copy nuclear genes [12]. Current study has successful to use DNA barcoding to facilitate decision makings and selections for biodiversity, breeding and conservation in fishery management [13].

COI gene has been widely used for barcoding DNA for fish in Australia [14], the Persian Gulf [15], tilapia [16], *Channa striata*, *C. pleurophthalma* [17], and *Chitala* sp (18). Four featherbacks of the family Notopteridae in Thailand have been characterized using allozyme (19). DNA barcode has been used to identify *Chitala lopis* in Kampar, Indragiri Hilir, Musi and Mahakam River (18), and examine the phylogeographic structure of the Asian bronze featherback *Notopterus notopterus* [20]. This research was conducted to obtain nucleotide sequences of the COI gene through DNA barcoding, which can then be used to determine the genetic relationship and conservation of featherbacks originating from the Musi River in Beruge Village, Babat Toman District, Musi Banyuasin Regency and PT PLN (Persero) Indralaya, Ogan Ilir Regency in South Sumatra.

2. Methodology

2.1. Sample collection

Four specimens and water samples were collected from 2 locations (Figure 1), the Musi River in Musi Banyuasin Regency (coded as CLS) and domesticated fish at PT PLN (a state owned company in the electricity sector) Indralaya, Ogan Ilir Regency (coded as CLP) at South Sumatra Province Indonesia. For each specimen, approximately 4 cm of a segment of the caudal fin was dissected with a sterile blade, preserved in 96% ethanol (1:10 w:v) then stored in 1.5 ml Eppendorf tubes at -20°C until further step.

2.2. DNA Extraction

A total of four fin clips from two locations have been used in genomic DNA extraction. Total genomic DNA was extracted based on Geneaid DNA Extraction kit (GT 100 Geneaid Biotech Ltd. Taiwan) as outlined in the manufacturer's guidance. An RNase incubation procedure was added to reduce RNA contamination. DNA samples were further kept in freezer (-20°C) until required.

2.3. DNA Amplification

Featherbacks DNA was used in PCR with primer pairs of FishF2-5'TCGACTAATCATAAAGATATCGGCAC3' and FishR2-5'ACTTCAGGGTGACCGAAGAATCAGAA3' to amplify 650 bp fragment [14]. PCR was performed in a final volume of 50 µl using MyTaq™ Red Mix (Bioline). Each reaction contained 10 µl of 10 µM each primer, 20 µl of nuclease-free water, 25 µl myTaq polymerase red mix and 3 µl of DNA template. The thermal cycling protocol was as follows: initial denaturation at 95°C for 1 min (1 cycle) followed by 35 cycles of 95°C for 15 sec, annealing at 50°C for 30 sec, extension or elongation at 72°C for 15 sec and a final extension at 72°C for 4 min. Furthermore, PCR products were run in electrophoresis 1% agarose gel in 1x TAE Buffer at 75V for 35 minutes and visualized to determine the DNA bands using Gel Documentation. DNA samples that were successfully amplified using PCR were then sequenced at 1st Base DNA Sequencing Service.

2.4. Data Analysis

Four samples of sequencing from both directions were saved in Fasta format. The resultant fragments were approximately 680 - 698 base pairs (bp). After trimming process with MEGA (Molecular Evolutionary Genetics Analysis) version 7 [22], the sequences had 621 bp length and no

gaps within sequences. The sequences were checked their identity using BLAST Basic Local Alignment Search Tool) in NCBI (National Center for Biotechnology Information). For sequence comparisons, pairwise genetic distances were quantified based on the Kimura 2-parameter (K2P) distance model [23]. The phylogenetic tree of featherbacks was constructed using the Neighbor-Joining (NJ) method. In the phylogenetic construction, *Oreochromis niloticus* (KM438538.1) [16] was also added as species outgroup.

3. Results and Discussion

3.1. The Sequence Identity

The BLASTn analysis showed that Featherbacks COI sequences in this study concordance with those in the GenBank database. Sample (CLP2) has different nucleotide sequences from fish samples (CLP3, CLS1, and CLS 3). CLP2 had the highest percentage of identity (99.28%) to *Chitala lopis* from Malaysia (Accession code KT001050.1) and 98.88% to the same species from Kampar River, Riau (Indonesia) (KM213054.1), but showed lower percentage of identity (92.49-94.55%) to *Chitala chitala* from India and Bangladesh (Accession code FJ459465.1 and MF140393.1). Samples CLP3, CLS1 and CLS3 had 95.19% identity to Indian featherback *Chitala chitala* from India (FJ459465.1), 95.03% (Pakistan, Bangladesh) and 93.75-94.05% to *C. lopis* from Kampar River, Riau (Indonesia) (KM213054.1) and Malaysia (KT001050.1). The COI is effectively used as species authentication method because intraspecific variation is low, but has high interspecific variation values especially in adjacent taxa [14].

3.2. Genetic Distance and Phylogenetic

Genetic distance at this study was also used to determine the genetic relationship between species in *Chitala* genus (Table 1).

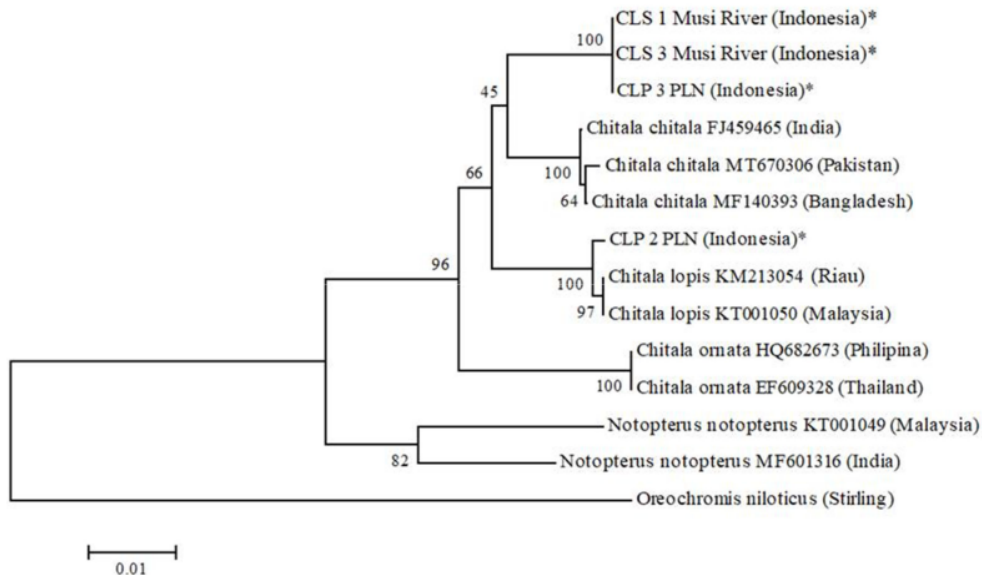
Table 1. Genetic distance between species in *Chitala* based on COI gene

No	Species	1	2	3	4	5	6	7	8	9	10	11	12	13
1	CLP 2 PLN (Indonesia)*													
2	<i>Chitala lopis</i> KT001050 (Malaysia)	0.006												
3	<i>Chitala lopis</i> KM213054 (Riau)	0.006	0.000											
4	<i>Chitala chitala</i> MF140393 (Bangladesh)	0.049	0.047	0.047										
5	<i>Chitala chitala</i> MT670306 (Pakistan)	0.049	0.047	0.047	0.004									
6	<i>Chitala chitala</i> FJ459465 (India)	0.047	0.046	0.046	0.002	0.006								
7	CLS 1 Musi River (Indonesia)*	0.059	0.061	0.061	0.044	0.047	0.042							
8	CLP 3 PLN (Indonesia)*	0.059	0.061	0.061	0.044	0.047	0.042	0.000						
9	CLS 3 Musi River (Indonesia)*	0.059	0.061	0.061	0.044	0.047	0.042	0.000	0.000					
10	<i>Chitala ornata</i> HQ682673 (Philippines)	0.076	0.070	0.070	0.070	0.074	0.068	0.072	0.072	0.072				
11	<i>Chitala ornata</i> EF609328 (Thailand)	0.076	0.070	0.070	0.070	0.074	0.068	0.072	0.072	0.072	0.000			
12	<i>Notopterus notopterus</i> MF601316 (India)	0.110	0.112	0.112	0.106	0.106	0.104	0.106	0.106	0.106	0.127	0.127		
13	<i>Notopterus notopterus</i> KT001049 (Malaysia)	0.118	0.116	0.116	0.118	0.118	0.120	0.123	0.123	0.123	0.135	0.135	0.074	
14	<i>Oreochromis niloticus</i> (Stirling)	0.226	0.231	0.231	0.228	0.228	0.230	0.220	0.220	0.220	0.224	0.224	0.228	0.218

* Specimen of current study

The genetic distance in Table 1 indicated that four samples of featherbacks were not 100% identical. CLP3, CLS1 and CLS 3, which is identified as *C. chitala* had a genetic distance of 0.06 (6%) to CLP2, which is annotated as *C. lopis*. The value of genetic distance within *C. lopis* based on the COI gene was 0-0.01, meanwhile within *C. chitala* ranged 0-0.04. Sequence differences of more than 5% can represent cryptic species, morphologically identical but different species [24]. The genetic distance of CLP2 samples was 0.01 (1%) with *Chitala lopis* from Malaysia (accession code KT001050.1) and from Sungai Kampar, Riau (KM213054.1). The smaller the genetic distance between individuals in a population, the more uniform the population will be. The table denoted that within the species barcode variation was low in compare to the sequence variation between *C. lopis*, *C. chitala* and *Notopterus notopterus*. The genetic distance between *C. chitala* and *N. notopterus* was 0.11-0.12, while *C. lopis* and *N. notopterus* varied from 0.11-0.12. This phenomenon can be said as a monophyletic relationship, which means a group of taxa originating from the same ancestor. Some studies also stated that the genetic distance within the genus is lower than between the genus [10,25].

The phylogenetic tree of featherbacks was presented in Figure 1. This study determined the level of evolution and kinship of a species, where all *Chitala* were separated from *Notopterus* and species outgroup, *Oreochromis niloticus*.



* Specimen of current study

Figure 1. Phylogenetic tree of featherbacks from Musi River and Fishpond at PT PLN

The Figure 1 described that *Chitala* genus formed 4 sub-clusters. The first sub-cluster (bootstrap value/bv=100%) was consisted of samples from the Musi River (CLS1, CLS 3) and (CLP3) from PT PLN, meanwhile the second sub-cluster was *C. chitala* from Bangladesh, India and Pakistan. Although the two sub-clusters separate each other, the bootstrap value was quite low (bv=45%), therefore it cannot be stated as clearly distinct relative to the first sub cluster. The samples CLP2 (PT PLN), Malaysia and Kampar River (bootstrap value/bv = 100%) made third sub-cluster, identified as *C. lopis*. The fourth sub-cluster of *Chitala* genus was consisted of *C. ornate* from Thailand, Philippines and South Africa, formed a distant with high supported bootstrap value (98%) to others three sub cluster. The bootstrap in the phylogenetic tree was estimated to evaluate branch stability [26]. The bootstrap is fixed if the value is above 95% and it is unreliable if the bootstrap value is below 70%. Phylogenetic analysis of a species can be accomplished on morphological structure and genes through sequences of mitochondrial DNA. The mitochondrial DNA sequences elucidate the relationship of species to evolutionary complex due to variations in morphology [27]. The *Chitala* are experiencing decline population for many years due to over-exploitation and habitat destruction (4), therefore the need for the conservation of this genus are pivotal. The identification supported by DNA barcoding could be useful tool for appraising fish biodiversity and observing fish conservation (27–29).

The phylogenetic construction trees denoted clearly distant between species *C. lopis* and *C. chitala* (bootstrap value =70%). Another study stated that 7 out of 12 samples of featherbacks fish from Indragiri Hilir, Kampar, Musi and Mahakam River were identified as *C. lopis*. Meanwhile, the other 5 samples could not be classified with *C. lopis* because they had intraspecific variations of more than 3%. The existence of cryptic species in the featherbacks was showed with a large genetic variation in *C. lopis* group [28]. The utilization of DNA barcoding and morphology to delineate species may prove to be a solution for the appraisal of difficult cases such as cryptic species [9]. The second cluster was *N. notopterus*, consisted of 2 sub-clusters (bootstrap value of 82%), *N. notopterus* from Malaysia and

India. In *Notopterus*, there was strongly evidence of two allopatric species of *Notopterus*, which have been described from Southeast Asia and South Asia [21]. The third cluster was *Oreochromis niloticus* species outgroup in this study. This research concordance with another study using allozyme, where genetic structure and relationships of the four species were phylogenetically separated as two clades, the *N. notopterus* and the clade of three *Chitala* species, revealing that the three *Chitala* species were genetically related more closely to each other than to *N. notopterus* [18].

4. Conclusions

The sample of featherbacks from PT PLN Indralaya (CLP2) indicated high similarity percentage to *C. lopis* originating from Malaysia (99.28%) and Kampar River, Riau (98.88%). Furthermore the Musi River (CLS1, CLS3) and PT PLN (CLP3) denoted a high percentage of similarities (95.53%) to *C. chitala* from India. The construction of phylogenetic trees indicated clearly distant between *C. lopis*, *C. chitala* and *Notopterus notopterus*., therefore DNA barcoding can be further applicable in the inventory and conservation of aquatic organism.

Acknowledgements

The authors would like to thank Head of Plant Physiology Laboratory (Prof. Dr. Ir. Rujito Agus Suwignyo, M. Agr) for his support and his staff, Mrs Sandi at Faculty of Agriculture, for assistance during the research. We are grateful to PT PLN (Persero) Indralaya for featherbacks sample. The authors also acknowledge the contribution of the Sriwijaya Univeristy for Competitive Research Grant (grant reference number 0179.043/UN9/SB3.LPPM.PT/2020) and institutions support towards the research.

References

- [1] BRPPU 2010 *Fishery in Musi River, South Sumatra* (Palembang: Bee Publishing)
- [2] Roberts T R 1992 Systematic revision of the old world freshwater fish family Notopteridae 2(4) pp 361–83
- [3] Inuoe J G, Kumazawa Y, Miya M, Nishida M 2009 The historical biogeography of the freshwater knifefishes using mitogenomic approaches: A Mesozoic origin of the Asian notopterids (Actinopterygii: Osteoglossomorpha) *Mol Phylogenet Evol.* 51(3):486–99
- [4] Directorate General of Fisheries 2010 *Indonesian Fisheries Statistics* Jakarta
- [5] BPS Riau 2017 Fisheries Production and Value 2014 – 2015 [Internet]. Available from: <https://riau.bps.go.id>
- [6] Ng H H 2020 *Chitala lopis*. IUCN Red List Threat Species [Internet]. 2020;8235. Available from: <https://dx.doi.org/10.2305/IUCN.UK.2020-%0A1.RLTS.T157719927A89815479.en>
- [7] Kress W J, Garcia-Robledo C, Uriarte M, Erickson D 2015 DNA barcodes for ecology, evolution, and conservation. *Trends Ecol Evol* [Internet] 30(1):25–35. Available from: <https://doi.org/10.1016/%0Aj.tree.2014.10.008>
- [8] Bingpeng X, Heshan L, Zhilan Z, Chunguang W, Yanguo W, Jianjun W 2018 DNA barcoding for identification of fish species in the Taiwan Strait. Fugmann SD, editor. *PLoS One* [Internet] Jun 1;13(6):e0198109. Available from: <https://dx.plos.org/10.1371/journal.pone.0198109>
- [9] Dahruddin H, Hadiaty R K, Hubert N 2016 DNA Barcoding: Foundations and Applications for Southeast Asian Freshwater Fishes. *Treubia*. 43(December):1–16.
- [10] Hebert P D N, Ratnasingham S, deWaard J R 2003 Barcoding animal life: cytochrome c oxidase subunit 1 divergences among closely related species *Proc Biol Sci.* Aug;270 Suppl(figure 1):S96-9.
- [11] Brown W, George M, Wilson 1979 *A Rapid evolution of animal mitochondrial DNA*. *Proc Natl Acad Sci U S A.*;76(4):1967–71.
- [12] Lee W, Conroy J, Howell W H, Kocher T D 1995 Structure and evolution of teleost mitochondrial control regions. *J Mol Evol.* 41:54–66
- [13] Ude G N, Igwe D O, Brown C, Jackson M, Bangura A, Ozokonkwo-Alor O, et al. 2020 DNA barcoding for identification of fish species from freshwater in Enugu and Anambra States of Nigeria. *Conserv Genet Resour* [Internet];12(4):643–58. Available from:

<https://doi.org/10.1007/s12686-020-01155-7>

- [14] Ward R D, Zemlak T S, Innes B H, Last P R, Hebert P D N 2005 DNA barcoding Australia's fish species. *Philos Trans R Soc Lond B Biol Sci.* Oct;360(1462):1847–57
- [15] Asgharian H, Sahafi H H, Ardalan A A, Shekarriz S, Elahi E 2011 Cytochrome c oxidase subunit 1 barcode data of fish of the Nayband National Park in the Persian Gulf and analysis using meta-data flag several cryptic species *Mol Ecol Resour* May;11(3):461–72
- [16] Syaifudin M, Bekaert M, Taggart J, Hulata G, D'Cotta H, Baroiller J, et al. 2017 DNA typing across ten tilapia species using cytochrome C oxidase subunit I (COI) *Aquaculture* 472(4/1):125–125
- [17] Syaifudin M, Wijayanti M, Dwinanti S H, Muslim, Mahendra M, Marlina S 2020 Short Communication: DNA barcodes and phylogenetic of striped snakehead and ocellated snakehead fish from South Sumatra, Indonesia. 21(3):1227–35
- [18] Wibowo A 2014 Barcoding of Featherback (*Chitala lopis*) Based on Cytochrome Oxidase Subunit I (COI) Gene of Mitochondrial DNA. In Yogyakarta: National Seminar XI, Gadjah Mada University pp 227–36
- [19] Sodsuk P K, Sodsuk S 2000 Genetic diversity of featherback fish in Thailand. *Kasetsart J (National Sci.* 34:227–33
- [20] Lavoué S, Ghazali SZ, Jamaluddin, Firdaus amsari A, Siti Azizah Mohd Nor KMZ. Genetic evidence for the recognition of two allopatric species of Asian bronze featherback Notopterus (Teleostei, Osteoglossomorpha, Notopteridae). *Zoosyst Evol.* 2020;96(2):449–54.
- [21] Kumar S, Stecher G, Tamura K 2016 MEGA7: Molecular Evolutionary Genetics Analysis Version 7.0 for Bigger Datasets. *Mol Biol Evol.*33:1870–4
- [22] Kimura M 1980 A simple method for estimating evolutionary rate of base substitutions through comparative studies of nucleotide sequences *J. Mol Evol.* 15:111–20
- [23] Barber P H, Moosa M K, Palumbi S R 2002 Rapid recovery of genetic diversity of stomatopod populations on Krakatau: Temporal and spatial scales of marine larval dispersal. *Proc. R. Soc. B Biol Sci.*;269(1500):1591–7.
- [24] Khan S, Lyla P, John B, Kuamr C, Murugan S, Jalal K 2010 DNA Barcoding of *Stolephorus indicus*, *Stolephorus commersonii* and *Terapon jarbua* of Parangipettai Coastal Waters *Biotechnology* 9:373-7
- [25] Nakano T 2004 Phylogeny and Historical Biogeography of Limpets of the Order Patellogastropoda Based on Mitochondrial Dna Sequences *J Molluscan Stud.* 70(1):31–41
- [26] Avise J 2004 Molecular Markers, Natural History and Evolution. 2nd ed. Sinauer Associates
- [27] Vernooij R, Haribabu E, Muller M R, Vogel J H, Hebert P D N, Schindel D E, et al. 2010 Barcoding life to conserve biological diversity: Beyond the taxonomic imperative *PLoS Biol.* 8(7):5–9
- [28] Weigt L A, Baldwin C C, Driskell A, Smith D G, Ormos A, Reyier E A 2012 Using DNA barcoding to assess Caribbean reef fish biodiversity: Expanding taxonomic and geographic coverage *PLoS One* 7(7)
- [29] Takahara T, Minamoto T, Doi H 2013 Using Environmental DNA to Estimate the Distribution of an Invasive Fish Species in Ponds *PLoS One* 8(2)
- [30] Lavoué S, Zafirah Ghazali S, Amirul Firdaus Jamaluddin J, Azizah Mohd Nor S, Zain K M 2020 Genetic evidence for the recognition of two allopatric species of Asian bronze featherback Notopterus (Teleostei, Osteoglossomorpha, Notopteridae). *Zoosystematics Evol.* 96(2):449–54

Phylogenetic of Featherback Chitala sp from South Sumatra Based on Cytochrome C Oxidase Subunit I (COI) Gene

ORIGINALITY REPORT

13%

SIMILARITY INDEX

PRIMARY SOURCES

1	hal.archives-ouvertes.fr Internet	58 words — 2%
2	www.ncbi.nlm.nih.gov Internet	51 words — 2%
3	li01.tci-thaijo.org Internet	41 words — 2%
4	Christian Pitra, Pedro VazPinto, Brendan W. J. O'Keefe, Sandi Willows-Munro, Bettine Jansen van Vuuren, Terry J. Robinson. "DNA-led rediscovery of the giant sable antelope in Angola", European Journal of Wildlife Research, 2006 Crossref	30 words — 1%
5	www.scialert.net Internet	24 words — 1%
6	etd.auburn.edu Internet	17 words — 1%
7	Al-Khafaji, Alaa. "Interactions Between Pathogenic and Non-pathogenic Rickettsiales and the Tick Host.", The University of Liverpool (United Kingdom), 2020 ProQuest	16 words — 1%

8 Ghanem, Mostafa Ghanem Ahmed. "Development of Advanced Molecular Tools for Sequence Typing and Epidemiological Investigation of Avian Mycoplasma in Poultry.", The Ohio State University, 2020

16 words — 1%

ProQuest

9 link.springer.com

Internet

13 words — < 1%

10 K. K. Lal, A. Mandal, R. K. Singh, P. Punia, D. Kapoor, U. K. Chauhan, S. P. Singh, V. Mohindra.

"Genetic divergence in two featherback fishes, *Chitala chitala* and *Notopterus notopterus*", *Journal of Applied Ichthyology*, 2006

12 words — < 1%

Crossref

11 studi.ristekdikti.go.id

Internet

11 words — < 1%

12 vip.ucaldas.edu.co

Internet

11 words — < 1%

13 Fausto Tinti, Andrea Colombari, Maria Vallisneri, Corrado Piccinetti, Anna Maria Stagni.

"Comparative Analysis of a Mitochondrial DNA Control Region Fragment Amplified from Three Adriatic Flatfish Species and Molecular Phylogenesis of Pleuronectiformes", *Marine Biotechnology*, 1999

10 words — < 1%

Crossref

14 S. Lin, H. Zhang, Y. Hou, Y. Zhuang, L. Miranda.

"High-Level Diversity of Dinoflagellates in the Natural Environment, Revealed by Assessment of Mitochondrial *cox1* and *cob* Genes for Dinoflagellate DNA Barcoding", *Applied and Environmental Microbiology*, 2008

9 words — < 1%

Crossref

-
- 15 www.fishbase.se Internet 9 words — < 1%
-
- 16 mobt3ath.com Internet 8 words — < 1%
-
- 17 tandfonline.com Internet 8 words — < 1%
-
- 18 Chih-Hsiang Tzeng, Tai-Sheng Chiu. "DNA barcode-based identification of commercially caught cutlassfishes (Family: Trichiuridae) with a phylogenetic assessment", Fisheries Research, 2012
Crossref 7 words — < 1%
-

EXCLUDE QUOTES ON

EXCLUDE MATCHES OFF

EXCLUDE BIBLIOGRAPHY ON