

1. Jurnal MBL043-03-
09_FDOC_1_Hermansyah_Novia
2015.pdf

Candida tropicalis Isolated from *Tuak*, a North Sumatera-Indonesian Traditional Beverage, for Bioethanol Production

Hermansyah^{1*}, Novia², Minetaka Sugiyama³, and Satoshi Harashima³

¹Department of Chemistry, Faculty of Mathematics and Natural Sciences, ²Department of Chemical Engineering, Faculty of Engineering, Sriwijaya University, South Sumatera 30662, Indonesia

³Department of Biotechnology, Graduate School of Engineering, Osaka University, Osaka 565-0871, Japan

Received: June 8, 2015 / Revised: July 31, 2015 / Accepted: August 3, 2015

Tuak is a traditional alcoholic beverage, one of the most widely known in the North Sumateran region of Indonesia. It is produced by a spontaneous fermentation process through the application of one or more several kinds of wood bark or root, called *raru* (*Xylocarpus* wood bark or a variety of forest mangosteen), into the sap water of sugar palm (*Arenga pinnata*) for 2–3 days. In this research, yeast that are potentially useful for ethanol production was isolated from *Tuak* and identified. Based on analysis of D1/D2 domain sequence of LSU (large subunit) rRNA genes, those isolated yeast strains, HT4, HT5, and HT10 were identified as *Candida tropicalis*. Fermentation test of these *C. tropicalis* isolates displayed an ability to produce 6.55% (v/v) and 4.58% ethanol at 30°C and 42°C, respectively. These results indicated *C. tropicalis* isolates more rapidly utilize glucose and obtain higher levels of the production of ethanol at the higher temperature of 42°C than *S. cerevisiae*, a common yeast used for bioethanol fermentation.

Keywords: Yeast, *Candida tropicalis*, *tuak*, bioethanol

Introduction

Ethanol has acquired much attention as bio-based alternative energy because of its friendly environment. Increasing of ethanol yield is required to meet a global demand, therefore development of cost-effective technology for bioethanol production is priority for many researchers and industries. Cost-effective technology depends on following factors; rapid and high yielding conversion of carbohydrate to ethanol [18]. Production process of bioethanol depends on raw materials. Various types of lignocellulosic materials such as empty palm bunch, wheat straw, sugarcane bagasse, corncobs is treated in a more complex way than starch or grain raw materials. To produce ethanol from lignocellulosic material it is necessary to breakdown the chains of these carbohydrates (amylum, cellulose, hemicel-

lulose, etc) for obtaining glucose, which can be converted into ethanol by yeast or other microorganism [4]. Usage of yeast *Saccharomyces cerevisiae* strain in the fermentation process to convert glucose into ethanol has been well established method. *S. cerevisiae* is a facultative anaerobe microorganism and it can ferment glucose into ethanol very high efficiency under anaerobic condition and thus is the most commonly used microorganism in industrial ethanol production [2, 15]. But, improvement of ethanol yield by using either genetically engineered *S. cerevisiae* strain or other yeast with some desirable traits may be required. Some desirable traits of yeast called superior strain such as tolerance to high temperature, high ethanol production (Htg), acidity tolerance (Acid), and high ethanol production (Hep) are indispensable for economic feasibility in ethanol production [1, 16]. Furthermore, when we apply lignocellulosic biomass as raw material, for cost-effective and efficient ethanol production, yeast strain should grow on not only glucose, but also xylose and arabinose, and it can be better if yeast strain can ferment those monosaccharides [20].

*Corresponding author

Tel: +62-711-580-269, Fax: +62-711-580-05

E-mail: hermansyah@unsri.ac.id

© 2015, The Korean Society for Microbiology and Biotechnology

Ethanol-producing yeast strains have been isolated from Tuak, North Sumatera Indonesia traditional beverage. Tuak is traditional alcoholic beverage of North Sumatera - Indonesia which is always used in social activities and several ceremonies. Tuak is produced by spontaneous fermentation of the sap water sugar palm (*Arenga pinnata*) in the presence of raru wood or several kinds of wood skin or roots (like nirih – *Xylocarpus* wood skin or a kind of forest mangosteen) for over night incubation (Toba pulp lestari website, 2013).

Three strains from tuak designed as HT4, HT5, and HT10 were isolated since they showed desirable trait for fermentation and showed interesting phenotypes. Based on analysis of D1/D2 domain sequence of Large Subunit (LSU) rRNA using two pairs of universal primer (ITS1-IT4 and NL1-NL4 pairs), these strains were identified as *Candida tropicalis*. Free and calcium alginate-immobilized *C. tropicalis* was used in production of bioethanol without the saccharification step [8]. Although *C. tropicalis* is a potentially useful agent for the commercial production of bioethanol, usage of *C. tropicalis* as ethanol-producing strains are very view reports.

24

Materials and Methods

Strains and media

Yeast strains (HT4, HT5, and HT5) were isolated from Tuak obtained from North Sumatera-Indonesia and these strains have been identified as *C. tropicalis*. Following procedure was used to obtain *C. tropicalis* isolates HT4, HT5, HT10 : 100 µl filtered sampel of a fresh tuak was spreaded on YPD agar media. Cells were incubated at 30°C for 2–3 days. If cell numbers were too much, filtrate should be diluted for 10×, 100×, or 1000× to obtain single colonies.

S. cerevisiae laboratory strain BY4741 with genotype *MATa met15Δ0 his3Δ1 leu2Δ0 ura3Δ0* (Htg-). For routine subculturing and maintenance, the strains were grown on YPDA broth medium (10 g/l yeast extract, 20 g/l peptone, 20 g/l glucose, 100 mg/l adenine) at 30°C, or on YPDA agar medium (10 g/l yeast extract, 20 g/l peptone, 20 g/l glucose, 400 mg/l adenine, and 20 g/l bacto agar). YPXA agar consisted of 10 g/l yeast extract, 20 g/l peptone, 20 g/l xylose, 20 g/l bacto agar. YPAA agar consisted of 10 g/l yeast extract, 20 g/l peptone, 20 g/l arabinose, 20 g/l bacto agar. YPD10A broth medium consisted of 10 g/l yeast extract, 20 g/l peptone, 100 g/l glucose, 400 mg/l adenine.

Primers

Two universal primers pairs were used in this study: ITS1 (5'-TCCGTAGGTGAACCTGCGG-3') and ITS4 (5'-TCCTCCGCTTATTGATATGC-3') ; NL-1 (5'-GCATATCAATAAGCGGAGGA AAAG-3') and NL-4 (5'-GGTCCGTGTTCAAGACGG-3') [11].

Phenotypic characteristics

Cells were grown on YPDA, YPXA and YPAA agar media, incubated at 30°C for 1 day to see cell growth in the presence of xylose and arabinose, respectively. Temperature sensitive phenotype was observed when cells grown on YPDA were incubated at 41°C for 2 days.

7

Genomic DNA extraction

Total genomic DNA was isolated from stationary-phase culture according to previously reported procedure [14]. Cells were cultured in 50 ml centrifuge tubes containing 10 ml YPDA broth at 30°C with 200 rpm shaking overnight. Cells were harvested by centrifugation at 5000 ×g at 4°C for 5 minutes, washed with 20 ml sterile water three times, resuspended in 200 µl lysis buffer (100 mM Tris-HCl pH 8.0, 50 mM EDTA and 0.5% SDS), and lysed by vortexing on a high speed vortex mixer with 0.2 g of glass bead (0.5 mm in size). After disruption of the cell, the lysed cells were centrifuged at 5000 ×g and 4°C, for 5 minute. The supernatants were collected into a microcentrifuge, and 500 µl mixture of phenol:chloroform: isoamylalcohol in the ratio 25:24:1 (v/v/v) was added. Moreover, the mixture was briefly mixed by the vortex, and centrifuged at 12000 ×g and 4°C for 10 minutes. The upper layer was withdrawn carefully and transferred to a new 1.5 ml microcentrifuge. One ml ice cold 95% (v/v) ethanol was added to the supernatant and briefly mixed by inversion. It was then stored at -20°C for 2 hours to precipitate the genomic DNA, and the sample was centrifuged at 12000 ×g and 4°C for 10 minutes. The supernatant was carefully discarded to retain the genome DNA pellet. Afterwards, 1 ml 75% (v/v) ice cold ethanol was used to wash the genomic DNA pellet three times, and the DNA pellets were then dried by incubation at 37°C for 1 hour. The genomic DNA was resuspended in 200 µl of sterile water and stored at -20°C until use.

Gene sequencing and analysis

Two universal primer pairs consisted of ITS1 and ITS4

primer pair and NL-1 and NL-4 primer pair were used to amplify the DNA region containing the internal transcribed spacers (ITS). ITS1-ITS4 primer pair amplified the internal transcribed spacer region (ITS1-5.8S rDNA-ITS2), while NL1-NL4 primer pair amplified D1/D2 domain of 26S rRNA gene. PCR products were purified with the QIA quick purification kit (Qiagen). Moreover, primers ITS1 and NL1 were used for sequencing analysis. The nucleotide sequences of DNA fragments were determined using Autosequencers ABI Prism 310 or 3100 (Applied Biosystems). DNA sequencing data was analyzed through BLAST (Basic Local Alignment Search Tool) National Center for Biotechnology Information homepage (<http://blast.ncbi.nlm.nih.gov/Blast.cgi>) and ClustalW2 (<http://www.ebi.ac.uk/Tools/msa/clustalw2/>).

Fermentation test

The method used to determine fermentation ability was as described by previous report [1]. *C. tropicalis* isolates or *S.cerevisiae* BY4741 cells were cultured in YPDA medium at 30°C with shaking for overnight, and these cells were transferred to fermentation medium YPD10A, where the initial cell density was adjusted to OD₆₀₀ = 0.1. Fermentation was performed using culture tubes (18 × 175 mm) with working volumes of 15 ml YPD10A medium, at two different temperatures 30°C and 42°C with shaking 150 rpm. The bioethanol concentration from fermentations were determined by using an Alcohol machine AL-3 (Riken Keiki, Japan) every 10 hours. Glucose concentrations were measured using the Glucose C-II-test (Wako, Japan).

Results and Discussion

Nucleotides sequencing analysis

In this study, three yeast isolates (HT4, HT5, and HT10) from *tuak* were further identified using molecular method. By PCR method using two universal primer pairs, ITS1-ITS4 and NL1-NL4 have successfully amplified two parts of ribosomal regions. Ribosomal regions, such as the internal transcribed spacer (ITS) region and 28S rRNA, exhibit a low intraspecific polymorphism and a high interspecific variability, therefore these region is an ideal targets for species identification purpose [7]. Nucleotides sequencing analysis of the PCR products were carried out using each ITS1 and NL1 oligonucleotides separately. By using ITS1 oligonucleotide primer, nucleotide sequence of entire ITS1-5.8S

rDNA-ITS2 of HT4, HT5, and HT10 isolates showed identical sequences with *C. tropicalis* as many as 95–99%, 94%, and 95–99%, respectively. While using NL1 oligonucleotide primer, nucleotide sequence analysis of LSU rRNA D1/D2 domain gene respectively showed similarity 95–99%, 99–100%, and 99%, with *C. tropicalis* (Fig. 1 and Fig. 2). All analysis of these nucleotides sequences were less than 100% similarity with *C. tropicalis*, it assumed that these differences reflected intraspecific diversity [19]. Therefore, based on these sequences producing significant alignments data indicated that all HT4, HT5, and HT10 isolates were identified as *C. tropicalis*. *C. tropicalis* was isolated from rotten fruits of sapota (*Achras sapota* L.) and strawberry (*Fragaria sp. L.*) which are capable to convert pentose sugar xylose into ethanol [17].

Phenotypic characteristic

Phenotypic tests of *C. tropicalis* isolates (HT4, HT5, and HT10) revealed that these isolates can grow in the presence of arabinose and xylose as well as glucose as sole carbon source on YPAD, YPAX, YPAD agar media, respectively (Fig. 3). This indicated that *C. tropicalis* isolates was able to utilize and consume both pentose sugars as well as glucose for growth. This trait is indispensable since both arabinose and xylose are present in high amounts in lignocellulosic biomass. Several genetic engineering strategies have been used in attempt to enable arabinose and xylose utilization by *S. cerevisiae* in which contributed to improved ethanol production [10]. In the presence of mixture of glucose, L-arabinose, and D-xylose as a carbon source in batch culture, the recombinant *S. cerevisiae* utilizes glucose first and completely consumed, L-arabinose and D-xylose consumption rates were higher after glucose depletion [3]. The arabinose- and xylose-growing strains is crucial to utilize lignocellulosic biomass for bioethanol production. The co-utilization of arabinose and xylose significantly reduced formation of the by-product xylitol, can improve bioethanol production, and make the fermentation process more cost-effective [10, 13]. Fig. 3 also showed that the growth of these *C. tropicalis* isolates at 30°C for 24 h were faster than *S.cerevisiae* strain as a common microbe for ethanol fermentation in glucose medium. Further observation, these *C. tropicalis* isolates showed tolerance to high temperature 41°C on YPD agar medium, while wild type *S. cerevisiae* strain showed sensitive phenotypic at this temperature. Tolerance to high temperature


```

-TTANTAGCGGCGAGTGAAGCGGCAAAAGCTCAAATTTGAAATCTGGCTCTTTCAGAGTC 59
--TAGTAGCGGCGAGTGAAGCGGCAAAAGCTCAAATTTGAAATCTGGCTCTTTCAGAGTC 58
CTTAGTAGCGGCGAGTGAAGCGGCAAAAGCTCAAATTTGAAATCTGGCTCTTTCAGAGTC 60
* *****

CGAG-TTGTAAATTTGAAGAAGGTATCTTTGGGTCTGGCTCTTGTCTATGTTTCTTGAAC 118
CGAG-TTGTAAATTTGAAGAAGGTATCTTTGGGTCTGGCTCTTGTCTATGTTTCTTGAAC 117
CGANGTTGTAAATTTGAAGAAGGTATCTTTGGGTCTGGCTCTTGTCTATGTTTCTTGAAC 120
*** ** *****

AGAACGTCACAGAGGGTGAGAATCCCGTGCGATGAGATGATCCAGGCCTATGTAAAGTTC 178
AGAACGTCACAGAGGGTGAGAATCCCGTGCGATGAGATGATCCAGGCCTATGTAAAGTTC 177
AGAACGTCACAGAGGGTGAGAATCCCGTGCGATGAGATGATCCAGGCCTATGTAAAGTTC 180
*****

CTTCGAAGAGTCGAGTTGTTTGGGAATGCAGCTCTAAGTGGGGGTAATTCATCTAAA 238
CTTCGAAGAGTCGAGTTGTTTGGGAATGCAGCTCTAAGTGGGGTAAATTCATCTAAA 237
CTTCGAAGAGTCGAGTTGTTTGGGAATGCAGCTCTAAGTGGGGTAAATTCATCTAAA 240
*****

GCTAAATATTGGCGAGAGACCGATAGCGAACAAGTACAGTGATGAAAAGATGAAAAGAAC 298
GCTAAATATTGGCGAGAGACCGATAGCGAACAAGTACAGTGATGAAAAGATGAAAAGAAC 297
GCTAAATATTGGCGAGAGACCGATAGCGAACAAGTACAGTGATGAAAAGATGAAAAGAAC 300
*****

TTTGAAGAGAGAGTGAAGAAAGTACGTGAAATTTGTTGAAAGGGAAGGGCTTGAGATCA AAC 358
TTTGAAGAGAGAGTGAAGAAAGTACGTGAAATTTGTTGAAAGGGAAGGGCTTGAGATCA GAC 357
TTTGAAGAGAGAGTGAAGAAAGTACGTGAAATTTGTTGAAAGGGAAGGGCTTGAGATCA GAC 360
***** **

TTGGTATTTTGTATGTTACTTCTTCGGGGGTGGCCTCTACAGTTTATCGGGCCAGCATCA 418
TTGGTATTTTGTATGTTACTTCTTCGGGGGTGGCCTCTACAGTTTATCGGGCCAGCATCA 417
TTGGTATTTTGTATGTTACTTCTTCGGGGGTGGCCTCTACAGTTTATCGGGCCAGCATCA 420
*****

GTTTGGGCGGTAGGAGAATTGCGTTGGAATGTGGCACGGCTTCGGTTGTGTGTTATAGCC 478
GTTTGGGCGGTAGGAGAATTGCGTTGGAATGTGGCACGGCTTCGGTTGTGTGTTATAGCC 477
GTTTGGGCGGTAGGAGAATTGCGTTGGAATGTGGCACGGCTTCGGTTGTGTGTTATAGCC 480
*****

TTCGTCGATACTGCCAGCCTAGACTGAGGACTGCGGTTTATACCTAGGATGTTGGCATAA 538
TTCGTCGATACTGCCAGCCTAGACTGAGGACTGCGGTTTATACCTAGGATGTTGGCATAA 537
TTCGTCGATACTGCCAGCCTAGACTGAGGACTGCGGTTTATACCTAGGATGTTGGCATAA 540
*****

TGATCTTAAGTCGCCCCGTCTTGAAACCACGGACCA 573
TGATCTTAAGTCGCCCCGTCTTGAA----- 561
TGATCTTAAGTCGCCCCGTCTTG----- 562
*****

```

Fig. 1. Alignment of nucleotides sequences of internal transcribed spacer (ITS1-5.8S rDNA-ITS2). The deduced nucleotides sequences of Internal transcribed spacer (ITS1-5.8S rDNA-ITS2) of HT4, HT5, and HT10 were aligned using Clustal X. Asterisks and grey colour indicate identical nucleotide.

```

-----TTATTGAACAAATTTCTTTNGTGGCGGGAGCAATCCTACCGC- 42
-----
TGCACCACATGTGTTTTTTATTGAACAAATTTCTTTGGTGGCGGGAGCAATCCTACCGCC 60

AGNNNNNANAACCTAACCCAACTTTTTATTACAGT-CAAACCTTGATT-ATTATTACAA 100
-----AACCCAACTTTTTATTACAGTTCAAACTNGNNTTATTATTACAA 46
AGANGTTATAACTAACCCAACTTTTTATTACAGT-CAAACCTTGATT-ATTATTACAA 118
***** * * * *****
TAGTCAAACCTTT-CAACAACGGATCTCTTGGTTCTCGCATCGA-TGAAGAACGCACCGA 158
TAGNCAAACCTTTCAACAACGGATCTCTTGGTTCTCGCATCGAATGAAGAACGCAGCGA 172
TAGTCAAACCTTT-CAACAACGGATCTCTTGGTTCTCGCATCGA-TGAAGAACGCAGCGA 176
*** ***** ***** ***** *****
AATGCGATACGTAATGAATTGCAGATATTCGTGAATCATCGAATCTTTGAAACGCACAT 218
AATGCGATACGTAA-ATA---TGNAANTNGCCA-GAAT-----ANTTCNNGAA----- 149
AATGCGATACGTAATGAATTGCAGATATTCGTGAATCATCGAATCTTTGAAACGCACAT 236
***** * * * ***** * * * *
TGCGCCCTTTGGTATTCCAAAGGGCATGCCTGTTTGAGCGTCATTTCTCCCTCAAACCC 278
-----ATCNTCNAAA-----TCTTTNNAANCNC 172
TGCGCCCTTTGGTATTCCAAAGGGCATGCCTGTTTGAGCGTCATTTCTCCCTCAAACCC 296
* * * * * * * * * *
CGGGTTTGGTGTGAGCAATACGCTAGGTTTGTGAAAGAATTTAACGTGAAACTTAT 338
NNNNTN-----GNNNCNNT 187
CGGGTTTGGTGTGAGCAATACGCTAGGTTTGTGAAAGAATTTAACGTGAAACTTAT 356
* * * * *
TTAAGCGACTTAGGTTTATCCAAAAACGCTTATTTTGCTAGGGGCCACCACATTTTATT 398
TN-----GNNNTTNCAAAA-----GGN----- 206
TTAAGCGACTTAGGTTTATCCAAAAACGCTTATTTTGCTAGGGGCCACCACATTTTATT 416
* * * * * * * * * *
TCAAACTTTGACCTCAAATCAGGTAGGACTACCCGCTGAAC TTAAGCATATCAATAAGC 458
-----
TCATAACTTTGACCTCAAATCAGGTAGGACTACCCGCTGAAC TTAAGCATATCAATAAGC 476
GGAGGAANATTTTGTACTTAGTTGTTTACCTG---ACC-CATGATTTTTTTATTGAG 514
GGAGGAAANGATC-ATTACTGATTTGCTTAA-TGTGACCACATGTGTTTTTTATTGAAC 534
ACCTCTTTTGGGGGGGTTACC-TCCTCCGCTTAGGC-----TT 554
-----
AAATTTCTTTGGTGGCGGGNGCAATCTACCGCCAGAGGTTATAACTAAACCAAACCTTTT 594
ATCTACACC---ACNT--TTTAATCTT----- 576
-----
ATTTACAGTCAAACCTGATTATTATTACAATAGTCAAACCTTTCAACAACGGATCTCTT 654
-----
GGTTCCTCGCATCNATGAANAACGCANCGAAATGCGATACNTAATATGAATNNCNATATTN 714
-----
GAATCATCAATCTTTGAACGCACATNGNCCTTTGGTATTCAAANGNATGCNNTTTGAG 774
-----
CNNCATTTCTCCTCAACCCNGG 797

```

Fig. 2. Alignment of nucleotides sequences of 26S rDNA D1/D2 domain. The deduced nucleotides sequences of 26S rDNA D1/D2 domain of HT4, HT5, and HT10 were aligned using Clustal X. Asterisks and grey colour indicate identical nucleotide.

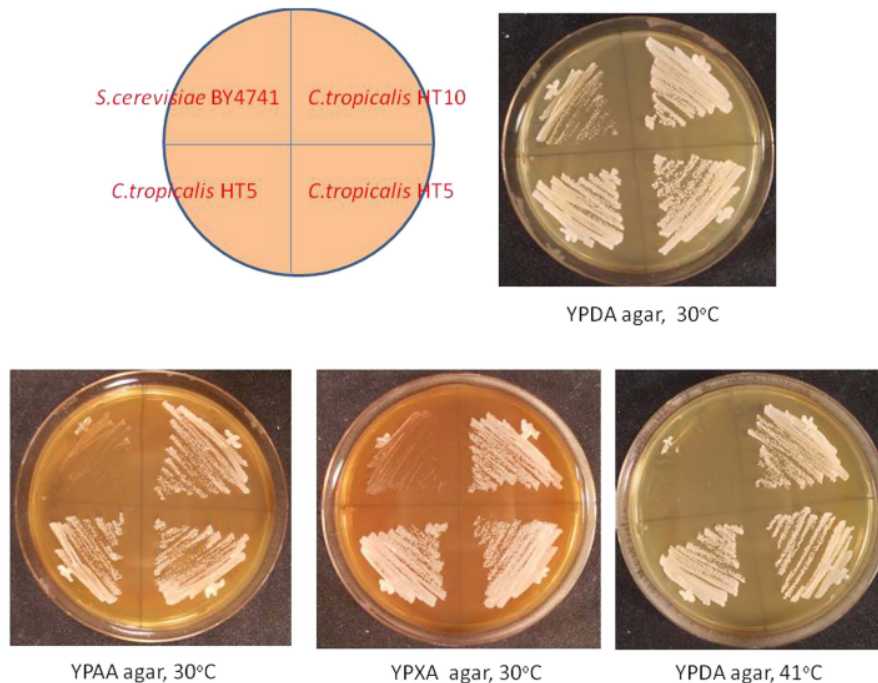


Fig. 3. Phenotypic test of *C. tropicalis* isolates. *C. tropicalis* isolates (HT4, HT5, and HT10) and wild type strain *S. cerevisiae*, BY4741 were streaked on YPDA (glucose), YPAA (arabinose), and YPXA (xylose) media incubated at 30°C and 41°C for 1–2 days.

(Htg⁺) is required for bioethanol production, and another desirable traits are tolerance to acidity (Acd⁺) and high ethanol productivity (Hep⁺). Advantages using high-temperature resistant yeast for fermentation can reduce the risk of contamination, cooling cost, and enabling easy recovery of ethanol [6].

Fermentation tests

To see whether *C. tropicalis* is potentially useful yeast for bioethanol production, fermentation tests for their capable fermenting arabinose, xylose, and glucose incubated at 30°C and 42°C were performed. Although *C. tropicalis* isolates were able to grow on various carbon sources, not all carbon sources could be fermented and converted producing ethanol under anaerobic condition. They may produce different products of fermentation. As presented in Fig. 4A, at common working temperature, 30°C for 20 h capability of *C. tropicalis* isolates showed ethanol production comparable to that *S. cerevisiae* wild type BY4741 in fermenting glucose which is 6.5% (v/v). At this conditions, 100 g/l of

glucoses were completely consumed by all *C. tropicalis* isolates while for *S. cerevisiae* strain BY4741 2.87 g/l of utilized glucose remained as presented in Fig. 4B. In the presence of arabinose or glucose as a sole carbon source, similar to *S. cerevisiae* wild type BY4741, fermentation by *C. tropicalis* isolates did produce an ethanol (data not shown). This result supports published report that *C. tropicalis* converts xylose to ethanol under aerobic, but not anaerobic conditions [9]. *C. tropicalis* isolated from buffalo feces utilized xylose as a sole carbon source and preferred to produce xylitol more than ethanol [12]. Fermentation of starch with free and immobilized *C. tropicalis* cell in fed-batch mode by stirring and oxygen maintained at 450 rpm and 0.6 L/min respectively yielded ethanol concentration of 5.6% (w/v) [8]. Most of yeast species are able to convert L-arabinose to arabitol, while the L-arabinose and D-xylose pathways share the common intermediate xylitol, but whereas L-arabinose is converted to xylitol according to the following sequence: L-arabinose to arabitol to L-xylose to xylitol [5]. At higher temperature 42°C, fermentation of glu-

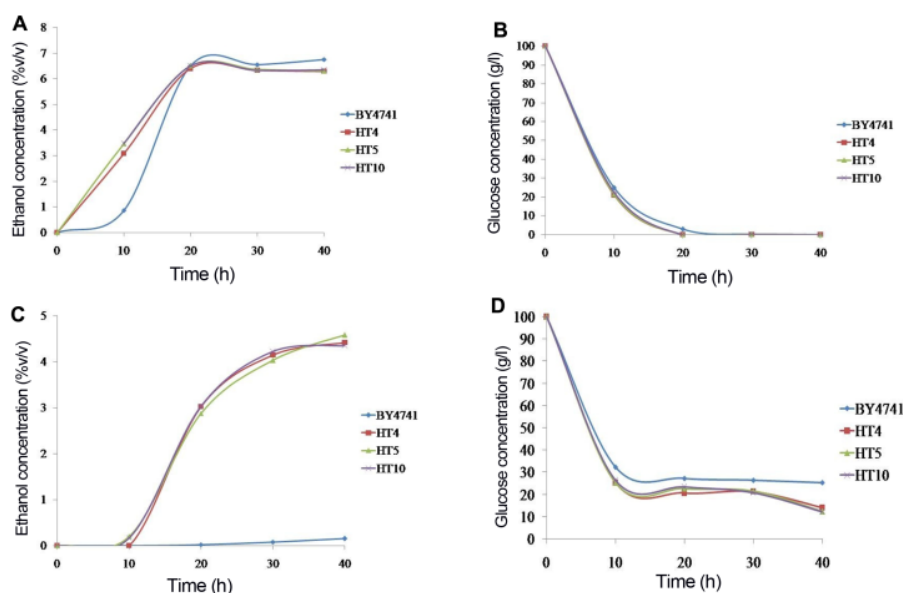


Fig. 4. Fermentation test. Fermentation performance of *C. tropicalis* isolates (HT4, HT5, and HT10) and *S. cerevisiae* strain BY4741. Inoculums of yeast culture grown in YPDA medium for overnight at 30°C was transferred to YPD10A containing 100 g/l glucose at initial $OD_{600} = 0.1$, and fermented at two different temperatures, 30°C and 42°C. Time course profiles of ethanol production and glucose concentration during fermentation were performed at 30°C (A and B) and 42°C (C and D), respectively. At indicated points, ethanol concentrations were determined using an Alcohol machine AL-3 (Riken Keiki, Japan) and Glucose concentrations were measured using the Glucose C-II-test (Wako, Japan).

cose by *C. tropicalis* can result higher ethanol than by *S. cerevisiae* as presented in Fig. 4C, and ethanol production under high temperature at 42°C was lower than under common fermentation condition at 30°C.

As shown in Fig. 4C and Fig. 4D, by using *C. tropicalis* isolates HT4, HT5, HT10, after 20 hour of fermentation at 42°C from 100 g/l glucose fermentation, 20.72, 22.67, 23.42 g/l glucose remained unutilized although 3.02, 2.88, and 3.03% (v/v) of ethanol were respectively produced, while *S. cerevisiae* BY4741 remained 27.39 g/l unutilized glucose and produced 0.02% (v/v) ethanol. After 30 h of fermentation, 21.36, 21.63, and 20.91 g/l glucose remained unutilized; 4.15, 4.03, and 4.22% (v/v) ethanol were produced by *C. tropicalis* isolates HT4, HT5, and HT10 respectively. After 40 h of fermentation, ethanol production did not increase significantly, *C. tropicalis* isolates HT4, HT5, and HT10 produced 4.42, 4.58, and 4.35% (v/v) ethanol, with 14.16, 12.37, and 12.27 g/l glucose remained unutilized respectively. Ethanol production by *S. cerevisiae* after 30 and 40 h of fermentation were 0.08 and 0.15% (v/v),

although glucose remained unutilized were 26.55 and 25.42 g/l, respectively. These results indicated that the ability of *C. tropicalis* isolates is more rapid in utilizing glucose and higher production of ethanol at high temperature 42°C as compared with *S. cerevisiae* a common yeast for bioethanol fermentation. Ethanol content produced by these *C. tropicalis* isolates were almost similar compared with previous report stating that *S. cerevisiae* (hybrid TJ14 strain) displayed ability to produce 4.65% (w/v) ethanol from 100 g/l glucose fermentation at 41°C [1].

In summary, this is the first report describing utilization of Tuak, a North Sumatera-Indonesia traditional beverage, focused on isolation and identification of yeasts for bioethanol production. Phenotypic observations showed that HT4, HT5, HT10 isolates grew well on glucose, sucrose, and arabinose as sole carbon source, and these isolates have molecularly identified as *C. tropicalis*. Fermentation test of these *C. tropicalis* isolates displayed ability to produce 6.55% (v/v) and 4.58% ethanol from 100 g/l glucose fermentation at 30°C and 42°C, respectively.

Acknowledgments

3

The authors would like to thank to PNBP Sriwijaya University, Indonesia 2014 for financial support of this International collaboration research project.

References

1. Benjaphokee S, Hasegawa D, Yokota D, Asvarak T, Auesukaree C, Sugiyama M, *et al.* 2012. Highly efficient bioethanol production by a *Saccharomyces cerevisiae* strain with multiple stree tolerance to high temperature, acid and ethanol. *N Biotechnol.* **29**: 379–386.
2. Benjaphokee S, Koedrih P, Auesukaree C, Asvarak T, Sugiyama M, Kaneko Y, *et al.* 2012. CDC19 encoding pyruvate kinase is important for high-temperature tolerance in *Saccharomyces cerevisiae*. *N. Biotechnol.* **29**: 166–176.
3. Bettiga M, Hahn-Hagerdal B, Gorwa-Grauslund MF. 2008. Comparing the xylose reductase/xylytol dehydrogenase and xylose isomerase pathways in arabinose and xylose fermenting *Saccharomyces cerevisiae* strains. *Biotechnol. Biofuels* **1**: 16.
4. Cardona CA, Sanchez OJ. 2007. Review : Fuel ethanol production: process design trends and integration opportunities. *Bioresour. Technol.* **98**: 2115–2457.
5. Dien BS, Kurtzman CP, Sahal BC, Bothast RJ. 1996. Screening for L-Arabinose fermenting yeast. *Appl. Biochem. Biotechnol.* **57/58**: 233–242.
6. Dogan A, Demirci S, Aytakin AO, Sahin F. 2014. Improvements of tolerance to stress conditions by genetic engineering in *Saccharomyces cerevisiae* during ethanol production. *Appl. Biochem. Biotechnol.* **174**: 28–42.
7. Ge YP, Wang L, Lu GX, Shen YN, Liu WD. 2012. A simple and reliable PCR-restriction fragment length polymorphism assay to identify *Candida albicans* and its closely related *Candida dubliniensis*. *Braz. J. Microbiol.* **43**: 873–879.
8. Jamai L, Ettayebi K, El Yamani J, Ettayebi M. 2007. Production of ethanol from starch by free and immobilized *Candida tropicalis* in the presence of amylase. *Bioresour. Technol.* **98**: 2765–2770.
9. Jeffries. 1981. Conversion of xylose to ethanol under aerobic conditions by *Candida tropicalis*. *Biotechnol. Lett.* **3**: 213–218.
10. Karhumaa K, Wiedemann B, Hann-Hagerdal B, Boles E, Gorwa-Grauslund MF. 2006. Co-utilization of L-arabinose and D-xylose by laboratory and industrial *Saccharomyces cerevisiae* strains. *Microbial Cell Factories.* **5-18**: 2859-5-18.
11. Kurtzman CP, Robnett CJ. 1997. Identification of clinically important ascomycetous yeasts based on nucleotide divergence in the 5' end of the large-subunit (26S) ribosomal DNA gene. *J. Clin. Microbiol.* **35**: 1216-1223.
12. Lorliam W, Akaracharanya A, Suzuki M, Ohkuma M, Tanasupawat S. 2013. Diversity and fermentation products of xylose-utilizing yeasts isolated from buffalo feces in Thailand. *Microbes. Environ.* **28**: 354–360.
13. Madhavan A, Srivastava A, Kondo A, Bisaria VS. (2011). Bioconversion of lignocelluloses-derived sugars to ethanol by engineered *Saccharomyces cerevisiae*. *Crit. Rev. Biotechnol.* **32**: 22–48.
14. Makimura K, Murayama SY, Yamaguchi H. 1994. Detection of a wide range of medically important fungi by the polymerase chain reaction. *J. Med. Microbiol.* **40**: 358–364.
15. Nevoigt E. 2008. Progress in metabolic engineering of *Saccharomyces cerevisiae*. *Microbiol. Mol. Biol. Rev.* **72**: 379–412.
16. Olofsson K, Bertilsson M, Liden G. 2008. A short review on SSF-an interesting process option for ethanol production from lignocellulosic feedstocks. *Biotechnol. Biofuels.* **1**: 7.
17. Rao RS, Bhadra B, Shivaji S. 2008. Isolation and characterization of ethanol-producing yeasts from fruits and tree barks. *Lett. Appl. Microbiol.* **47**: 19–24.
18. Stanley D, Fraser S, Chambers PJ, Roger P, Stanley GA. 2010. Generation and characterization of stable ethanol-tolerant mutants of *Saccharomyces cerevisiae*. *J. Ind. Microbiol. Biotechnol.* **37**: 139–149.
19. Takashima M, Van BH, Deuk An K, Ohkuma M. 2011. *Dioszegia rishiriensis* sp. nov., a novel yeast species from soil collected on Rishiri island, Hokkaido, Japan. *Int. J. Syst. Evol. Microbiol.* **61**: 1736–1739.
20. Wisselink HW, Toirkens MJ, del Rosario Franco Berriel M, Winkler AA, van Dijken JP, Pronk JT, *et al.* 2007. Engineering of *Saccharomyces cerevisiae* for efficient anaerobic alcoholic fermentation of L-arabinose. *Appl. Environ. Microbiol.* **73**: 4881–4891.

1. Jurnal MBL043-03-09_FDOC_1_Hermansyah_Novia 2015.pdf

ORIGINALITY REPORT

33%

SIMILARITY INDEX

PRIMARY SOURCES

- | | | |
|---|---|----------------|
| 1 | www.biotechnologyforbiofuels.com
Internet | 124 words — 4% |
| 2 | "Ethnic Fermented Foods and Alcoholic Beverages of Asia", Springer Science and Business Media LLC, 2016
Crossref | 111 words — 3% |
| 3 | ojs.pps.unsri.ac.id
Internet | 99 words — 3% |
| 4 | www.ncbi.nlm.nih.gov
Internet | 83 words — 3% |
| 5 | Suthee Benjaphokee, Daisuke Hasegawa, Daiki Yokota, Thipa Asvarak et al. "Highly efficient bioethanol production by a <i>Saccharomyces cerevisiae</i> strain with multiple stress tolerance to high temperature, acid and ethanol", <i>New Biotechnology</i> , 2012
Crossref | 73 words — 2% |
| 6 | Hermansyah, Almunady T Panagan, Fatma, Susilawati. "Indigenous Yeast for Bioethanol Production", <i>Journal of Physics: Conference Series</i> , 2021
Crossref | 70 words — 2% |

7 Ravella Sreenivas Rao, Bhaskar Bhadra, Neradugomma Naveen Kumar, Sisinthy Shivaji. " sp. nov., a novel ascomycetous yeast isolated from wine grapes ", FEMS Yeast Research, 2007 42 words — 1%

Crossref

8 Min Zhang, Jun Shi, Li Jiang. "Modulation of mitochondrial membrane integrity and ROS formation by high temperature in *Saccharomyces cerevisiae*", Electronic Journal of Biotechnology, 2015 41 words — 1%

Crossref

9 L JAMAI, K ETTAYEBI, J YAMANI, M ETTAYEBI. "Production of ethanol from starch by free and immobilized *Candida tropicalis* in the presence of α -amylase", Bioresource Technology, 2007 39 words — 1%

Crossref

10 journal.unhas.ac.id 38 words — 1%

Internet

11 "Seventeenth Symposium on Biotechnology for Fuels and Chemicals", Springer Nature, 1996 26 words — 1%

Crossref

12 Phatthanon Prasitchoke, Yoshinobu Kaneko, Takeshi Bamba, Eiichiro Fukusaki, Akio Kobayashi, Satoshi Harashima. "Identification and characterization of a very long-chain fatty acid elongase gene in the methylotrophic yeast, *Hansenula polymorpha*", Gene, 2007 26 words — 1%

Crossref

13 Benjaphokee, S.. "Highly efficient bioethanol production by a *Saccharomyces cerevisiae* strain with multiple stress tolerance to high temperature, acid and ethanol", New BIOTECHNOLOGY, 20120215 25 words — 1%

Crossref

- 14 Hermansyah, Susilawati, Dyah Subositi. " Growth Retardation of by Noni Fruit () Extract Occurred in G1 to S Transition of the Cell Cycle ", Journal of Physics: Conference Series, 2018 21 words — 1%
Crossref
-
- 15 www.microbialcellfactories.com 21 words — 1%
Internet
-
- 16 Chang-Ro Lee, Won-Jae Chi, Chang-Hwan Bae, Soon-Kwang Hong. "Erratum to: Identification of a New Agar-hydrolyzing Bacterium Vibrio sp. S4 from the Seawater of Jeju Island and the Biochemical Characterization of Thermostable Agarose", Microbiology and Biotechnology Letters, 2016 18 words — 1%
Crossref
-
- 17 Bhaskar Bhadra. "Pichia cecembensis sp. nov. isolated from a papaya fruit (Carica papaya L., Caricaceae)", FEMS Yeast Research, 6/2007 17 words — 1%
Crossref
-
- 18 Evrim Özkale Kaya, Yasemin Doğan, H. Tansel Yalçın. "Ethanol production from vineplant waste hydrolysate sugars by native yeast strains", BioResources, 2018 17 words — 1%
Crossref
-
- 19 Chu, B.C.H.. "Genetic improvement of Saccharomyces cerevisiae for xylose fermentation", Biotechnology Advances, 200709 15 words — < 1%
Crossref
-
- 20 Ayşegül Doğan, Selami Demirci, Ali Özhan Aytakin, Fikrettin Şahin. "Improvements of Tolerance to Stress Conditions by Genetic Engineering in Saccharomyces Cerevisiae during Ethanol Production", Applied Biochemistry and Biotechnology, 2014 12 words — < 1%

-
- 21 Kurtzman, C.P.. "Phylogenetic relationships among yeasts of the 'Saccharomyces complex' determined from multigene sequence analyses", *FEMS Yeast Research*, 200306 11 words — < 1%
Crossref
-
- 22 Sergey A. Starostin, Wytze Keuning, Jean-Paul Schalken, Mariadriana Creatore et al. "Synergy Between Plasma-Assisted ALD and Roll-to-Roll Atmospheric Pressure PE-CVD Processing of Moisture Barrier Films on Polymers", *Plasma Processes and Polymers*, 2016 11 words — < 1%
Crossref
-
- 23 Hosein Shahsavarani, Minetaka Sugiyama, Yoshinobu Kaneko, Boonchird Chuenchit, Satoshi Harashima. "Superior thermotolerance of *Saccharomyces cerevisiae* for efficient bioethanol fermentation can be achieved by overexpression of RSP5 ubiquitin ligase", *Biotechnology Advances*, 2012 10 words — < 1%
Crossref
-
- 24 Ayumi Tanimura, Masako Takashima, Takashi Sugita, Rikiya Endoh, Moriya Ohkuma, Shigenobu Kishino, Jun Ogawa, Jun Shima. "Lipid production through simultaneous utilization of glucose, xylose, and l-arabinose by *Pseudozyma hubeiensis*: a comparative screening study", *AMB Express*, 2016 9 words — < 1%
Crossref
-
- 25 C. Durand. "Molecular data suggest a hybrid origin for the invasive *Caulerpa racemosa* (Caulerpales, Chlorophyta) in the Mediterranean Sea", *Journal of Evolutionary Biology*, 1/2002 9 words — < 1%
Crossref

-
- 26 [Methods in Molecular Biology, 2012.](#) 9 words — < 1%
Crossref
-
- 27 [Rhulani Makhuvele, Ignatious Ncube, Elbert Lukas Jansen van Rensburg, Daniël Coenrad La Grange. "Isolation of fungi from dung of wild herbivores for application in bioethanol production", Brazilian Journal of Microbiology, 2017](#) 9 words — < 1%
Crossref
-
- 28 [Anjali Madhavan, Aradhana Srivastava, Akihiko Kondo, Virendra S. Bisaria. " Bioconversion of lignocellulose-derived sugars to ethanol by engineered ", Critical Reviews in Biotechnology, 2011](#) 8 words — < 1%
Crossref
-
- 29 [Hashem Mahmoud Mohamed, Ranya Fysal El-Homosal, Abd-Elatef Hesham Abd-Elatef, Fathi Mohamed Salh, Mohamed Younes Hussein. "Identification of Yeast Strains Isolated from Agricultural Soils for Releasing Potassium-bearing Minerals", Geomicrobiology Journal, 2016](#) 8 words — < 1%
Crossref
-
- 30 [Molecular Farming in Plants Recent Advances and Future Prospects, 2012.](#) 8 words — < 1%
Crossref
-
- 31 [Renan Eugênio Araujo Piraine, David Gerald Nickens, David J. Sun, Fábio Pereira Leivas Leite, Matthew L. Bochman. "Isolation of wild yeasts from Olympic National Park and Moniliella megachiliensis ONP131 physiological characterization for beer fermentation", Food Microbiology, 2021](#) 8 words — < 1%
Crossref
-
- 32 [Cristina Martini, Sâmia Maria Tauk-Tornisielo, Carolina Brito Codato, Reinaldo Gaspar Bastos,](#) 7 words — < 1%

Sandra Regina Ceccato-Antonini. "A strain of Meyerozyma guilliermondii isolated from sugarcane juice is able to grow and ferment pentoses in synthetic and bagasse hydrolysate media", World Journal of Microbiology and Biotechnology, 2016

Crossref

33 Maurizio Bettiga. "Arabinose and xylose fermentation by recombinant Saccharomyces cerevisiae expressing a fungal pentose utilization pathway", Microbial Cell Factories, 2009

7 words — < 1%

Crossref

34 Systems Metabolic Engineering, 2012.

7 words — < 1%

Crossref

35 Geneviève Arsenault-Labrecque, James G. Menzies, Richard R. Bélanger. " Effect of Silicon Absorption on Soybean Resistance to in Different Cultivars ", Plant Disease, 2012

6 words — < 1%

Crossref

36 Roberto Podesta', Victor Iniesta, Ala Rezmerita, Franck Cappello. "Chapter 13 An Information Brokering Service Provider (IBSP) for Virtual Clusters", Springer Science and Business Media LLC, 2009

6 words — < 1%

Crossref

37 Zhang, Wei, and Anli Geng. "Improved ethanol production by a xylose-fermenting recombinant yeast strain constructed through a modified genome shuffling method", Biotechnology for Biofuels, 2012.

6 words — < 1%

Crossref

