

New emerging entomopathogenic fungi
isolated from soil in South Sumatra
(Indonesia) and their filtrate and
conidial insecticidal activity against
Spodoptera litura

By Marieska Verawaty

See discussions, stats, and author profiles for this publication at: <https://www.researchgate.net/publication/346896100>

New emerging entomopathogenic fungi isolated from soil in South Sumatra (Indonesia) and their filtrate and conidial insecticidal activity against *Spodoptera litura*

Article in *Biodiversitas Journal of Biological Diversity* · October 2020

DOI: 10.13057/biodiv/d211115

CITATIONS

9

READS

151

7 authors, including:



Siti Herlinda
Universitas Sriwijaya

94 PUBLICATIONS 613 CITATIONS

[SEE PROFILE](#)



Radix Suharjo
Lampung University

49 PUBLICATIONS 187 CITATIONS

[SEE PROFILE](#)



Hasbi Hasbi
Universitas Sriwijaya

6 PUBLICATIONS 33 CITATIONS

[SEE PROFILE](#)



Arum Setiawan
Universita Sriwijaya

109 PUBLICATIONS 218 CITATIONS

[SEE PROFILE](#)

Some of the authors of this publication are also working on these related projects:



First record of Hagen's batwing *Atrophaneura hageni* (Rogenhofer, 1889) (Lepidoptera: Papiolinidae) in southern Sumatra, Indonesia [View project](#)



Biodiversity of Fauna Database for South Sumatra [View project](#)

New emerging entomopathogenic fungi isolated from soil in South Sumatra (Indonesia) and their filtrate and conidial insecticidal activity against *Spodoptera litura*

SITI HERLINDA^{1,2,*}, RISKI ANWAR EFENDI¹, RADIX SUHARJO³, HASBI^{2,4}, ARUM SETIAWAN⁵, ELFITA⁶, MARIESKA VERAWATY⁵

¹Department of Plant Pests and Diseases, Faculty of Agriculture, Universitas Sriwijaya. Jl. Raya Palembang-Prabumulih Km 32, Indralaya, Ogan Ilir 30662, South Sumatra, Indonesia. Tel.: +62-711-580663, Fax.: +62-711-580276, *email: sitiherlinda@unsri.ac.id

²Research Center for Sub-optimal Lands, Universitas Sriwijaya. Jl. Padang Selasa No. 524, Bukit Besar, Palembang 30139, South Sumatra, Indonesia

³Department of Plant Protection, Faculty of Agriculture, Universitas Lampung. Jl. Prof. Sumantri Brojonegoro No. 1, Bandar Lampung 35145, Lampung, Indonesia

⁴Program of Agricultural Engineering, Faculty of Agriculture, Universitas Sriwijaya. Jl. Raya Palembang-Prabumulih Km 32, Indralaya, Ogan Ilir 30662, South Sumatra, Indonesia

⁵Department of Biology, Faculty of Mathematics and Natural Sciences, Universitas Sriwijaya. Jl. Raya Palembang-Prabumulih Km 32, Indralaya, Ogan Ilir 30662, South Sumatra, Indonesia

⁶Department of Chemistry, Faculty of Mathematics and Natural Sciences, Universitas Sriwijaya. Jl. Raya Palembang-Prabumulih Km 32, Indralaya, Ogan Ilir 30662, South Sumatra, Indonesia

Manuscript received: 20 September 2020. Revision accepted: 9 October 2020.

Abstract. Herlinda S, Efendi RA, Suharjo R, Hasbi, Setiawan A, Elfita, Verawaty M. 2020. New emerging entomopathogenic fungi isolated from soil in South Sumatra (Indonesia) and their filtrate and conidial insecticidal activity against *Spodoptera litura*. *Biodiversitas* 21: 5102-5113. This study was carried out to confirm identity of *Beauveria bassiana* and *Metarhizium anisopliae* using sequence analysis of Internal Transcribed Spacer (ITS) region as well as the two unknown isolates of EPF and to investigate their filtrate and conidial insecticidal activity against *S. litura* larvae. The EPF species were identified based on morphological characters and molecular analysis. Their culture filtrate and conidial bioassays were performed on *S. litura* larvae. The species found were *Penicillium citrinum* (BKbTp), *Talaromyces diversus* (MSwTp1), *B. bassiana* (BSwTd4), and *M. anisopliae* (MSwTp3) and have been deposited in the GenBank. All EPF species have high insecticidal activity against *S. litura* larvae. The highest larvae mortality caused by filtrate was found on *P. citrinum* (98.67%) and not significantly different from those of *T. diversus* (96%), but significantly different from *B. bassiana* (86.67%) and *M. anisopliae* (82.67%). The highest larvae mortality caused by the conidia was also occurred to *P. citrinum* (98.67%) which was not significantly different from those of *T. diversus* (97.33%), *B. bassiana* (86.67%), and *M. anisopliae* (86.67%). The LT₅₀ caused by *T. diversus* filtrate was the shortest (6.19 days) and not significantly different from those caused by *P. citrinum* (6.62 days). The shortest LT₅₀ caused by conidia was found on *P. citrinum* (5.45 days). Therefore, the conidia and filtrate of *P. citrinum*, a new emerging entomopathogenic fungus, has the highest insecticidal activity. *P. citrinum* has the potential to be developed into commercial mycoinsecticides.

Keywords: *Beauveria bassiana*, leaf-eating caterpillar, *Metarhizium anisopliae*, *Penicillium citrinum*, *Talaromyces diversus*

INTRODUCTION

South Sumatra, Indonesia has a stretch with varying topography from the height of the land to the high ground. This topographic variation can develop many species of plants, for example, vegetables and the food crops. Vegetables that can adapt to various land topography in South Sumatra include chili (*Capsicum* spp.), mustard greens (*Brassica juncea*), kale (*Ipomoea reptans*), and spinach (*Amaranthus tricolor*) (Siaga et al. 2019). The main constraints of vegetable cultivation, especially chili pests are fruit flies (*Bactrocera dorsalis*) (Syamsudin et al. 2019), sap sucker (Thrips) (Johari et al. 2016), and leaf-eating caterpillar (*Spodoptera litura*) (Tompe et al. 2020).

S. litura is a polyphagous insect pest that attacks many plant species from various families (Tompe et al. 2020), like chili, mustard greens, water spinach, and spinach. The yield loss of chili caused by this pest reaches 50% every

year (Vijayalakshmi et al. 2016). The first instar of *S. litura* larvae eats the leaves in groups and skeletonize them, while the second instar extends to the last instar spread and eat individually leaves, flowers, and pistil chili (Tompe et al. 2020). In addition, *S. litura* is a key pest for leafy vegetables, such as mustard greens, water spinach, and spinach because the leaves that have been eaten become no longer valuable (Vijayalakshmi et al. 2016; Tompe et al. 2020). Since the public awareness on good health and environmental quality is increasing, there is a need to reduce the use of synthetic pesticides and improving application of eco-friendly control strategies for *S. litura*. One of the methods is applying the entomopathogenic fungi (EPF).

Some EPF species have been shown to be effective in killing *S. litura*, for example, *Beauveria bassiana* cultured in liquid media has been shown to kill 98% of *S. litura* larvae (Ayudya et al. 2019; Gustianingtyas et al. 2020). *Metarhizium anisopliae* was reportedly also effective in

killing *S. litura* larvae (Sowmya et al. 2017; Yang et al. 2019; Gustianingtyas et al. 2020) and can kill 96% of *S. litura* larvae (Gustianingtyas et al. 2020). Furthermore, *Metarhizium rileyi* also effectively kills *S. litura* larvae (Liu et al. 2017). In addition to being effective in killing the insect pests, EPF can also be integrated with entomopathogenic viruses, such as nucleopolyhedroviruses (NPV) (Souza et al. 2019) and botanical insecticides (Hernandez-Trejo et al. 2019) and does not harm parasitoids (Ngangambe and Mwatawala 2020).

Four isolates of EPF have been isolated from rhizosphere of several kinds of plants in lowland to high land of South Sumatra. On the basis of morphological characters, the two isolates have been identified as *B. bassiana* and *M. anisopliae* (Safitri et al. 2018; Sumikarsih et al. 2019; Gustianingtyas et al. 2020), and their filtrates were proven to be effectively killed up to 98% of *S. litura* larvae (Ayudya et al. 2019; Gustianingtyas et al. 2020). The other two EPF, until now, have not been fully revealed on molecular identity and their filtrate and conidial capability to cause mortality on *S. litura*. This research aimed to confirm identity of *Beauveria bassiana* and *Metarhizium anisopliae* using sequence analysis of Internal Transcribed Spacer (ITS) region as well as the two unknown isolates of EPF and to investigate their filtrate and conidial insecticidal activity against *S. litura* larvae.

MATERIALS AND METHODS

Exploring EPF

The EPF exploration was carried out on soil near root of oil palm, rice, maize, and vegetables in various locations (Table 1) ranging from lowland to highland of South Sumatra using the method of Safitri et al. (2018). Those locations chosen have objective to obtain the fungi that had adapted in the soils. The morphological identifications were carried out in 2018 and 2019, and their identities were confirmed by molecular analysis in February 2020. The EPF exploration method modified those of Anwar et al. (2015), namely using a bait method with *Tenebrio molitor* larvae as insect bait which was fed in the soil sample. The soil sampling used the method of Anwar et al. (2015) by digging the soil using surface soil sampler (Ø 20 mm) as deep as 10 cm around the rhizosphere plant according to the method of Thaochan and Sausa-Ard (2017) and 5 points were taken to collect 1 kg of soil. Then, the soil sample was put into a plastic bag and labeled with

information about the height of the location, type of commodity, and date of collection.

The soil sample was first cleaned from the roots and sieved with a 10 mesh sieve. Then, it was put into a plastic tray (32 x 25 x 5 cm³) each containing as much as 1 kg. The soil was then moistened with sterile distilled water with soil moisture exceeding 20% according to the method of Chen et al. (2014). Then, 20 newly molted 3rd-instar larvae of *T. molitor* were placed at the bottom of the tray and the larvae were sprinkled with the soil to reach 3 cm in thickness. Then, the tray containing the soil was covered with black cloth and sprayed with distilled water to maintain the soil moisture. The larvae were infested in the soil for 7 days to give time for the entomopathogenic fungal conidia to infect them, after which the dead larvae infected with entomopathogenic fungi were grown in the Sabouraud Dextrose Agar (SDA, Merck) medium.

Isolation and identification of EPF

The EPF infecting the larvae of *T. molitor* which was characterized by its body was overgrown with EPF mycelia, dry and contracted, then isolated and purified using the method of Youssef (2014). The isolation of EPF from the larvae's body surface began with the surface sterilization by modifying the method of Sharma et al. (2018) by rinsing with 1% of NaOCl for 1 minute, then rinsing with 100 mL of sterile distilled water for 3 times. The larvae sterilization was carried out to obtain EPF inside the haemocoel and cuticle larvae and prevent other fungi from being obtained. The sterilized larvae were grown in SDA media and incubated for 2 days. The growing fungus was purified in the SDA media until after getting pure isolates. The pure EPF was identified based on the molecular analysis.

Fungal identification

Morphological observations were carried out based on microscopic and macroscopic characteristics of the EPF. The macroscopic observation of the fungi was based on the color and shape of colony, whereas the microscopic observation was based on the shape and size of conidia and conidiophores.

The EPF was identified based on the molecular analysis in February 2020 at the Laboratory of Agricultural Biotechnology (accredited according to the ISO/IEC 17025 standard), Department of Plant Protection, Faculty of Agriculture, Universitas Lampung, Indonesia.

Table 1. Locations of EPF in South Sumatra, Indonesia

Fungal species (codes)	Village, District/City	Ecosystem	Crop	GPS (coordinate)	Altitude (m)	GenBank Acc. No.
<i>Penicillium citrinum</i> (BKbTp)	Talang Patai, Pagar Alam	Highland soil	Cabbage	S 04°02.161' E 103°10.484'	175	MT448730
<i>Talaromyces diversus</i> (MSwTp1)	Talang Patai, Pagar Alam	Highland soil	Mustard	S 03°50.174', E 103°31.293'	193	MT448731
<i>Beauveria bassiana</i> (BSwTd4)	Talang Dabok, Ogan Komering Ilir	Peat soil	Oil palm	S 03°23.570' E 104°51.498'	24	MT448732
<i>Metarhizium anisopliae</i> (MSwTp3)	Talang Patai, Pagar Alam	Highland soil	Mustard	S 03°50.174', E 103°31.293'	193	MT448733

Table 2. Primer used for amplification

Target of amplification	Primer name	Sequence (5'-3')	Product size (bp)	Reference
Internal Transcribe Spacer Region	ITS1	TCC GTA GGT GAA CCT TGC GG	600	(White et al. 1990)
	ITS4	TCC TCC GCT TAT TGA TAT GC		

DNA extraction and PCR amplification

The DNA extraction was performed on the mycelium of 2 days old fungi using InstaGene™ Matrix (BioRad). Amplification was carried out by Sensoquest Thermal Cycler Machine (Germany). PCR amplification on Internal Transcribed Spacer (ITS) region was conducted using primer ITS1 and ITS4 (Table 2) (White et al. 1990). The PCR was carried out with total volume of 25 µL involving 12.5 µL Master Mix (Red Mix) (Bioline), 1 µL of 10 µM of primer ITS 1 and ITS 4, 2 µL DNA, and 8.5 µL of sterile distilled water. DNA amplification consists of 1 cycle of the initiation at 95°C for 5 min, 30 cycles of denaturation at 95°C for 1 minute, primer annealing at 52°C for 1 min, primer extension at 72°C for 1 minute, and one cycle of elongation at 72°C for 5 minutes. The PCR results were run using 0.5% agarose gel in 20 mL of 1x buffer Tris-Boric Acid-EDTA (TBE) (1st Base Malaysia) with 1 µL Ethidium Bromide (EtBr 10 µg mL⁻¹). The electrophoresis was performed by 1x TBE buffer at 50 volts for 70 minutes. The results were visualized by DigiDoc UV transilluminator (UVP, USA).

The PCR product was emitted to 1st Base Malaysia for sequencing. The sequencing results were analyzed with Bio Edit program ver. 7.2.6 for windows. The result was then submitted to Basic Local Alignment Search Tool (BLAST) (<https://blast.ncbi.nlm.nih.gov/Blast.cgi>) to find their potential identity. The phylogenetic tree was developed by Mega 7 for Windows (Kumar et al. 2016) with Unweighted Pair Group Method with Arithmetic means (UPGMA). Reference strains employed in this research were obtained from NCBI (<https://www.ncbi.nlm.nih.gov/>).

Spodoptera litura mass rearing

S. litura larvae used in the insecticide activity test was collected from the vegetable fields around the campus of Universitas Sriwijaya and those vegetable fields that were not sprayed with synthetic insecticides. The larvae were taken to the laboratory and maintained in plastic containers (Ø 25 cm, height 30 cm) topped with gauze. that has been washed thoroughly using detergent. Next, pesticide-free spinach (*Ipomoea aquatic*) was put into the containers for the first instar feed of *S. litura*. The second instar was fed mulberry leaves (*Morus alba*) planted in the experimental field of the Faculty of Agriculture, Universitas Sriwijaya, Indonesia and not sprayed with pesticides.

Every day the larvae feed was replaced with fresh new feed. The larvae entering the pupae stage were transferred into plastic containers (Ø 10 cm, height 15 cm) whose top was exposed and the base was sprinkled with sifted soil (10 mesh). and already sterilized in an oven for 1 hour at 100°C. The thickness of the soil in the container was 3 cm. This plastic container containing pupae was put into a

gauze cage (30 x 30 x 30 cm³) already tapped with 10 water spinach sticks for laying eggs to the adults. The hatched eggs were transferred into a plastic cylinder and fed with water spinach which was replaced every day. The larvae used for toxicity testing were the second instar of the third offspring (F3) or afterward.

Producing of EPF mycoinsecticides

The EPF already identified molecularly, namely *P. citrinum*, *T. diversus*, *B. bassiana*, and *M. anisopliae* were made liquid formulation mycoinsecticides. The mycoinsecticides made of four types, each of which had active ingredients *P. citrinum*, *T. diversus*, *B. bassiana*, and *M. anisopliae*, and sterile distilled water was used for control. The mycoinsecticides were made by the method of Mascarin et al. (2015). In this, EPF was cultivated in solid media of Sabouraud Dextrose Agar (SDA, Merck), incubated for 7 days, and then the fungal cultures that grew were transferred to the liquid media of Sabouraud Dextrose Broth (SDB, Merck). The broth fungal cultures were incubated using a shaker for 7 days at 120 rpm. The broth fungal cultures from SDB with a minimum density of 1x10⁹ conidia mL⁻¹ were used for the active ingredient mycoinsecticides. The mycoinsecticides were made liquid formulation containing a mixture of 600 mL of the broth fungal cultures, 400 mL of carrier from shrimp shell flour compost extract, 10 mL of vegetable oil, and 10 mL of sterile distilled water solution of 0.04% polyoxyethyl-189 ene sorbitan mono-oleate (Tween®). The shrimp skin flour compost extract was made using the method of Suwandi et al. (2012). After that, the formulation was stored for 30 days before it was applied to obtain stable and non-contaminant mycoinsecticides. The mycoinsecticides activity was tested in the form of EPF culture and conidia filtrate.

Culture filtrate preparation of the mycoinsecticides.

The presence of raw secondary metabolites in culture filtrate was performed according to Soesanto et al. (2019) can be done by filtering fungal broth or liquid mycoinsecticides. The culture filtrate of liquid mycoinsecticides was produced from 2 stages of filtering using the method of Ayudya et al. (2019). In the first stage, 100 mL liquid mycoinsecticides was filtered using Whatman filter paper no. 42 and cotton with a thickness of 1 cm. The filtration culture produced from the first stage filter was then sucked up to 10 mL using a sterile hypodermic syringe to be filtered in the second stage. The second stage filtering used a syringe filter (0.45 µm pore size, Sartorius). The method of installing the syringe filter used the method of Alhusein et al. (2016) by placing it at the base of the needle, by the way, the needle was removed

first from the syringe, then the syringe filter was installed at the base of the needle. After the syringe filter was installed at the base of the needle, the needle was re-fitted to the syringe. The syringe containing 10 mL was pressed so that it released the culture filtrate that escaped from the syringe filter. The 100 mL of mycoinsecticide produced \pm 70 mL of culture filtrate. According to Soesanto et al. (2019), this second filtering culture filtrate was the raw secondary metabolites. Next, the culture filtrate was measured by its insecticidal activity by taking as much as 1 mL to be dropped on a piece of chili leaves.

Bioassays of culture filtrate and conidia of EPF

Bioassays of culture filtrate from mycoinsecticides of *P. citrinum*, *T. diversus*, *B. bassiana*, and *M. anisopliae* were carried out on chili leaves sprayed with 1 mL of culture filtrate. As a control, sterile distilled water was dripped on chili leaves. Then the leaves were dried before putting 25 second-instar *S. litura* larvae which were fasted for 2 hours. The second instar larvae were let to eat the leaves for 6 hours which had been dropped by the culture filtrate. After 6 hours the larvae were transferred into a plastic cylinder topped with gauze (\varnothing 25 cm, height 30 cm) containing 15-30 pieces of chili leaves (depending on the instar) which were clean and not dripped with culture filtrate. To maintain the moisture of chili leaves, the stalk was wrapped in cotton wool moistened with sterile distilled water. Every day chili leaves were replaced with new fresh leaves. The weight of the leaves eaten was measured according to the method of Ayudya et al. (2019) and recorded daily. Every day the dead larvae were recorded up to 12 days after the application.

Bioassays of conidia from mycoinsecticides of *P. citrinum*, *T. diversus*, *B. bassiana*, and *M. anisopliae* were carried out by means of 25-second instar *S. litura* larvae dripped topically 1 mL of conidia suspension of EPF with a

concentration of 1×10^6 conidia mL⁻¹. Then, the larvae were fed 15-30 pieces of chili leaves. As a control, it was used sterile distilled water. The weight of leaves eaten by larvae and weight of the larvae were recorded daily. Every day the dead larvae were recorded up to 12 days after the application.

The number of dead larvae was used to calculate mortality and the median Lethal Time (LT₅₀). The weight of the chili leaves eaten and the bodyweight of the larvae were measured every day from the first day to 12 days after the application. The measurement of the eaten leaf weight was conducted to determine whether the EPF affected the larvae appetite, whereas the measurement of larvae body weight was carried out to determine whether or not the EPF influenced the larvae growth.

Data analysis

The data differences among the treatments for leaf weight, larvae weight, larvae mortality, and LT₅₀ were analyzed using Analysis of Variance (ANOVA) if there were differences, then further tests were carried out using the 5% Tukey's Honestly Significant Difference (HSD). LT₅₀ data were obtained from probit analysis. All calculations were conducted using software of SAS University Edition 2.7 9.4 M5.

RESULTS AND DISCUSSION

Species of EPF

There were 4 EPF species namely, *P. citrinum*, *T. diversus*, *B. bassiana*, and *M. anisopliae* found from lowland and highland soils in South Sumatra. The macroscopic and microscopic appearance of the four fungal species showed obvious differences (Figures 1 and 2).

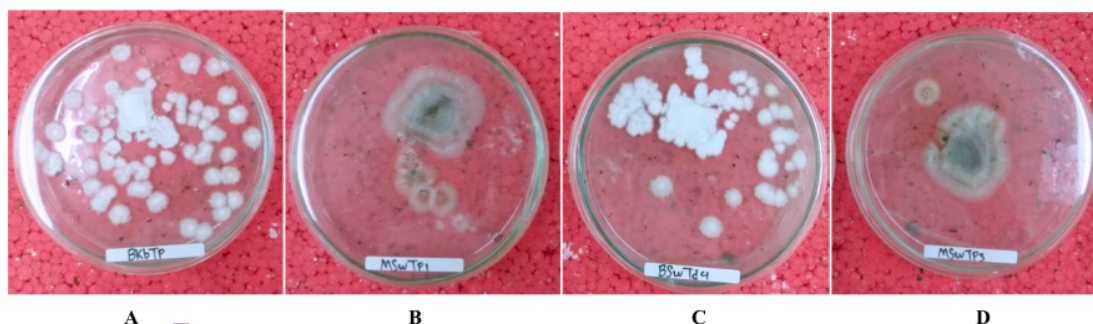


Figure 1. Colony of *Penicillium citrinum* (A), *Talaromyces diversus* (B), *Beauveria bassiana* (C), and *Metarhizium anisopliae*

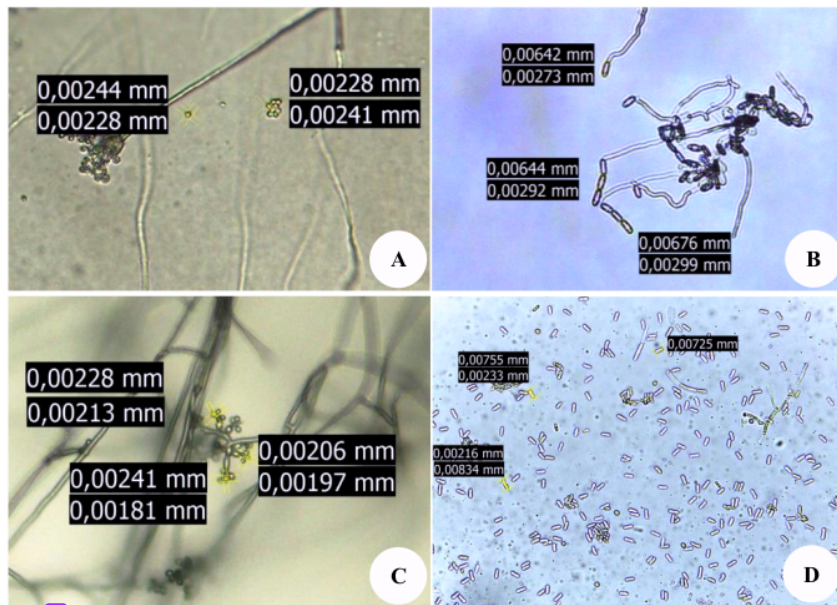


Figure 2. Conidia of *Penicillium citrinum* (A), *Talaromyces diversus* (B), *Beauveria bassiana* (C), and *Metarhizium anisopliae* (D)

The colony characteristics of *P. citrinum* on SDA medium were initially white, the older the fungus, the color turned to bluish-green with a white margin, round conidia with a diameter of 2.01-2.28 μm . The characteristics matched the description described by Mathew et al. (2010) stating that *P. citrinum* has globose green granular conidia. *T. diversus* has a colony characteristic generally in the form of microcolony scattering in the medium; the color was dark green with yellow margins. According to Visagie and Jacobs (2012), the size of *T. diversus* colony ranged from 2-4 mm and sometimes only microcolony and produced yellow colored mycelia at colony peripheral zones. In this study, *T. diversus* was more difficult to culture than the other three species and showed poor growth of colony on SDA. *B. bassiana* had a colony that was white but when it got older it was yellowish or turbid white and *B. bassiana* colonized SDA faster than the other three species. Conidia of *B. bassiana* was one-celled and the same circular shape as the observation of Safitri et al. (2018). *M. anisopliae* had a colony that was also white initially similar to *B. bassiana* colony but the older the fungus the colony turned greenish-white and finally dark green. Conidia of *M. anisopliae* was 6.42-6.76 μm in size. The found characteristics of the colony and conidia of *M. anisopliae* were the same as those described by Lopes et al. (2018) and Thaochan and Sausard (2017) stating that the colony is more than 5 days old, the conidia changes from white to green indicating that the conidia were matured with the conidial mass bluish olive and have cylindrical, single and one-celled, hyaline conidia.

The result of BLAST search revealed that BKbTp showed 99.38% of similarity with *P. citrinum* strain NFML_CH33_5BbE.1 (Acc. No. KM458810.1), MSwTp1

showed 99.05% of similarity with *T. diversus* strain DTO_13116 (Acc. No. KJ775700.1), BSwTd4 showed 99.65% of similarity with *B. bassiana* isolate GZMS-28 (Acc. No. KT715480.1) and MSwTp3 exhibited 99.82% of similarity with *M. anisopliae* isolate HT008 (Acc. No. MH512951.1). The result of BLAST search corresponded to those of phylogenetic tree analysis. The phylogenetic tree (Figure 3) was constructed using Mega 7 for Windows (Kumar et al. 2016) with Unweighted-pair Group Method with Arithmetic means (UPGMA). Based on the phylogenetic tree, BKbTp was placed in the group of *P. citrinum* strain NFML_CH33_5BbE.1 (Acc. No. KM458810.1), and SL1 (Acc. No. MN735924.1). MSwTp1 was in the group of *T. diversus* strain DTO_13116 (Acc. No. KJ775700.1) and strain SCZ5-2 (Acc. No. KY445783.1). BSwTd4 was in the group of *B. bassiana* isolate CGAIPFBS-012 (Acc. No. KY495188.1), isolate 08F04 (Acc. No. KF359944.1), and isolate GZMS-28 (Acc. No. KT715480.1). Meanwhile, MSwTp3 was in the group of *M. anisopliae* HT008 (Acc. no. MH512951.1), A1 (Acc. No. KX806656.1), and IPPM010202 (Acc. No. KY437678.1). Thus, based on the morphological characters and molecular analysis, it confirmed that the identity of the four isolates was *P. citrinum* (BKbTp), *T. diversus* (MSwTp1), *B. bassiana* (BSwTd4), and *M. anisopliae* (MSwTp3). The isolates have been deposited in the GenBank and the accession number were MT448730 (BKbTp) (<https://www.ncbi.nlm.nih.gov/nuccore/MT448730>), MT448731 (MSwTp1) (<https://www.ncbi.nlm.nih.gov/nuccore/MT448731>), MT448732 (BSwTd4) (<https://www.ncbi.nlm.nih.gov/nuccore/MT448732>), and MT448733 (MSwTp3) (<https://www.ncbi.nlm.nih.gov/nuccore/MT448733>).

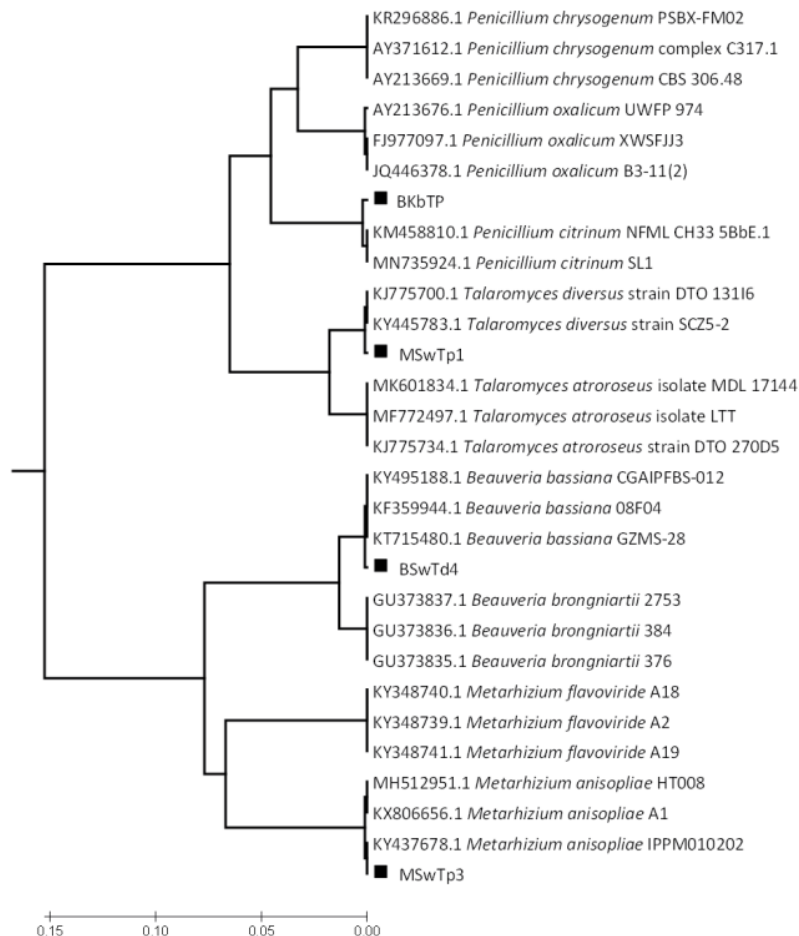


Figure 3. Dendrogram created on the basis of sequence analysis of ITS region using primer ITS1 and ITS4 with UPGMA method developed by MEGA7 for windows ■ = fungal isolates used in this study

EPF insecticidal activity against *Spodoptera litura*

The EPF insecticidal activity against *S. litura* larvae was stated from the data of the effect of EPF on the weight reduction of edible chili leaves, bodyweight of larvae, mortality, and length of time of death. On day 1 (1 x 24 hours) after the larvae were treated with the filtrate culture of the EPF, the weight of the leaves eaten by *S. litura* larvae did not show any significant difference compared to control (sterile distilled water), but after that, the weight of the leaves eaten by the larvae was lower than control (Table 3). For the larvae treated with conidia of the EPF on day 1 (1 x 24 hours) and day 2 (2 x 24 hours), the weight of the eaten leaves did not show any significant difference compared to control, on the following day the weight of the

eaten leaves by the larvae was significantly lower than those of the control.

The symptoms of leaves infested with larvae treated with filtrate or conidia culture showed less damage, whereas, the control leaves left only the bone of the leaf (Figures 4 and 5). The decreased appetite in leaves treated with the culture filtrate of the EPF was faster than in leaves treated with the conidia of the EPF. All tested species of the EPF significantly reduced the weight of leaves eaten by larvae compared to controls (Table 3). Thus, all species of the EPF (*P. citrinum*, *T. diversus*, *B. bassiana*, and *M. anisopliae*) were effective in reducing the appetite of *S. litura* larvae.

Table 3. Mean of leaf weight eaten by *Spodoptera litura* larvae treated with culture filtrates and conidia of mycoinsecticides from *Penicillium citrinum*, *Talaromyces diversus*, *Beauveria bassiana*, and *Metarhizium anisopliae*

Fungal species	1	2	3	4	5	6	7	8	9	10	11	12
Leaf weight ate by a larva (g day⁻¹) on observation for 12 days												
Culture filtrate												
<i>P. citrinum</i>	0.10	0.26 a	0.40 a	0.51 a	0.62 a	0.73 a	0.82 a	0.96 a	1.08 a	1.17 a	1.22 a	1.24 a
<i>T. diversus</i>	0.14	0.35 a	0.46 a	0.55 a	0.65 a	0.77 a	0.86 a	0.99 a	1.09 a	1.18 a	1.23 a	1.25 a
<i>B. bassiana</i>	0.17	0.36 a	0.47 a	0.58 a	0.74 a	0.94 a	1.08 a	1.22 a	1.35 ab	1.45 ab	1.53 ab	1.59 b
<i>M. anisopliae</i>	0.17	0.36ab	0.53 a	0.65 a	0.78 a	0.97 a	1.11 a	1.26 a	1.42 b	1.55 b	1.65 ab	1.77 b
Control	0.24	0.56 b	0.94 b	1.32 b	1.74 b	2.33 b	2.91 b	3.45 b	4.02 c	4.65 c	5.04 c	5.58 c
F-value	1.96 ^{ns}	6.86*	10.28*	19.63*	44.96*	76.82*	124.79*	131.90*	203.70*	263.92*	281.95*	324.89*
P-value	0.19	0.011	0.0031	0.00034	0.000016	0.0000020	0.00000031	0.00000025	0.000000044	0.000000016	0.000000012	0.000000070
HSD value	-	0.10	0.14	0.15	0.12	0.12	0.12	0.13	0.117	0.115	0.119	0.122
Conidia												
<i>P. citrinum</i>	0.45	0.76	1.13 a	1.50 a	1.84 a	2.00 a	2.28 a	2.47 a	2.62 a	2.74 a	2.85 a	2.92 a
<i>T. diversus</i>	0.45	0.84	1.17 a	1.50 a	1.87 a	2.15 a	2.51 a	2.71 a	2.94 a	3.04 a	3.19 a	3.28 a
<i>B. bassiana</i>	0.44	0.76	1.09 a	1.43 a	1.76 a	2.07 a	2.40 a	2.59 a	2.87 a	3.01 a	3.21 a	3.45 a
<i>M. anisopliae</i>	0.34	0.70	1.08 a	1.39 a	1.78 a	2.10 a	2.35 a	2.54 a	2.72 a	2.86 a	3.01 a	3.23 a
Control	0.56	1.28	1.97 b	3.64 b	3.33 b	3.99 b	4.99 b	5.73 b	6.57 b	7.49 b	8.32 b	9.16 b
F-value	1.78 ^{ns}	3.58 ^{ns}	7.14*	18.26*	16.06*	17.38*	14.98*	14.07*	17.72*	23.27*	26.81*	33.23*
P-value	0.23	0.06	0.01	0.0004	0.0007	0.0005	0.001	0.0011	0.0005	0.0002	0.0001	0.00005
HSD value	-	0.23	0.23	0.18	0.23	0.26	0.35	0.41	0.42	0.42	0.43	0.42

Note: ns = not significantly different; * = significantly different; values within a column followed by the same letters were not significantly different at P < 0.05 according to Tukey's HSD test

Table 4. Mean of larvae weight of *Spodoptera litura* treated with culture filtrates and conidia of mycoinsecticides from *Penicillium citrinum*, *Talaromyces diversus*, *Beauveria bassiana*, and *Metarhizium anisopliae*

Fungal species	1	2	3	4	5	6	7	8	9	10	11	12
Weight of larvae (g larvae⁻¹) on observation for 12 days												
Culture filtrate												
<i>P. citrinum</i>	0.06	0.09 a	0.12 a	0.15 a	0.19 a	0.22 a	0.25 a	0.29 a	0.34 ab	0.40 a	0.48 ab	0.50 a
<i>T. diversus</i>	0.06	0.09 a	0.12 a	0.15 a	0.18 a	0.22 a	0.27 a	0.31 a	0.38 b	0.46 b	0.53 b	0.58 b
<i>B. bassiana</i>	0.06	0.09 a	0.12 a	0.15 a	0.18 a	0.21 a	0.25 a	0.29 a	0.33 a	0.39 a	0.45 a	0.51 a
<i>M. anisopliae</i>	0.06	0.09 a	0.12 a	0.15 a	0.18 a	0.22 a	0.26 a	0.31 a	0.36 ab	0.41 ab	0.47 a	0.53 ab
Control	0.07	0.11 b	0.16 b	0.21 b	0.28 b	0.34 b	0.42 b	0.50 b	0.58 c	0.68 c	0.78 c	0.89 c
F-value	2.91 ^{ns}	6.31*	12.24*	21.07*	36.38*	52.94*	74.25*	109.18*	97.99*	96.07*	107.63*	40.12*
P-value	0.09	0.014	0.0017	0.00026	0.000035	0.0000085	0.0000023	0.0000052	0.0000079	0.0000085	0.0000055	0.000024
HSD value	-	0.01	0.01	0.02	0.02	0.02	0.02	0.02	0.024	0.03	0.028	0.053
Conidia												
<i>P. citrinum</i>	0.12	0.18 ab	0.23 a	0.29 a	0.35 a	0.41 a	0.47 a	0.53 a	0.59 a	0.65 a	0.73 a	0.75 a
<i>T. diversus</i>	0.13	0.19 ab	0.25 ab	0.32 a	0.39 a	0.46 a	0.52 a	0.59 a	0.66 a	0.74 a	0.83 a	0.85 a
<i>B. bassiana</i>	0.11	0.17 a	0.24 a	0.31 a	0.38 a	0.45 a	0.50 a	0.57 a	0.64 a	0.72 a	0.81 a	0.90 a
<i>M. anisopliae</i>	0.12	0.18 ab	0.25 ab	0.31 a	0.38 a	0.45 a	0.52 a	0.59 a	0.66 a	0.74 a	0.82 a	0.91 a
Control	0.12	0.20 b	0.27 b	0.36 b	0.45 b	0.55 b	0.65 b	0.77 b	0.90 b	1.03 b	1.18 b	1.33 b
F-value	3.37 ^{ns}	4.07*	6.49*	7.49*	9.23*	12.46*	15.82*	20.61*	27.40*	32.25*	36.85*	64.25*
P-value	0.07	0.04	0.01	0.01	0.004	0.002	0.001	0.0003	0.0001	0.00006	0.00003	0.00004
HSD value	-	0.01	0.01	0.02	0.02	0.03	0.04	0.04	0.05	0.05	0.05	0.05

Note: ns = not significantly different; * = significantly different; values within a column followed by the same letters were not significantly different at P < 0.05 according to Tukey's HSD test

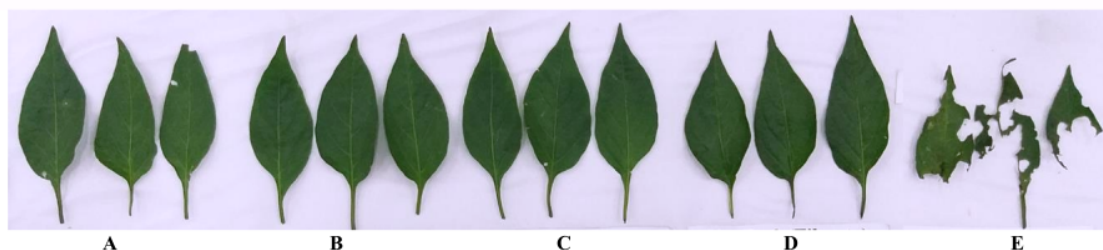


Figure 4. The symptoms on chili leaves eaten by *Spodoptera litura* larvae treated with culture filtrates of mycoinsecticides and control. Note: A. BKbTp (Filtrate), B. BSwTd4 (Filtrate), C. MSwTp1 (Filtrate), MSwTp3 (Filtrate), E. Control. Bar = 2 cm

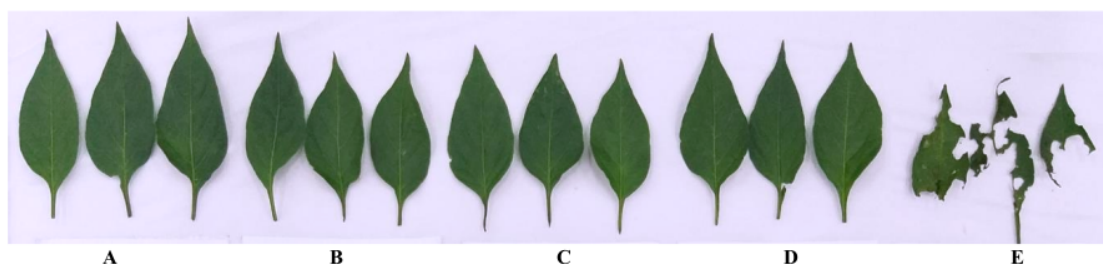


Figure 5. The symptoms on chili leaves eaten by *Spodoptera litura* larvae treated with conidia of mycoinsecticides and control. Note: A. BKbTp (Filtrate), B. BSwTd4 (Filtrate), C. MSwTp1 (Filtrate), MSwTp3 (Filtrate), E. Control. Bar = 2 cm

The decreased appetite of *S. litura* larvae treated with culture filtrate or conidia EPF was one of the stages of the larvae to be ill due to the treatment with EPF. In culture filtrate experiments, the larvae appetite already decreased on 2nd day and was faster on day 1st than the trial using the EPF conidia. In culture filtrate experiments, the decreased appetite was faster due to the raw secondary metabolite content of larvae consumed from the first day since the EPF culture filtrate was exposed, whereas in conidia treatment it required conidia time to enter the hemolymph and secrete secondary metabolites. The process of being ill due to the EPF started with the conidia attached to the cuticle larvae, and then the conidia rupture to form germ tubes to penetrate the cuticle (Fernandes et al. 2007). The infection started when germ tubes were able to penetrate the insect cuticle and the ability to infect was a determinant of the level of virulence EPF (Altre and Vandenberg 2001). After germ tubes reach the hemocoel, they produced specific infection hyphae originating at appressoria (El-Ghany 2015). Then the hyphae spread to the hemolymph and developed to produce blastospores. The blastospores then produced the secondary metabolites and enzymes that could disrupt normal cell metabolism (Mancillas-Paredes et al. 2019). The penetration stages of germ tubes to blastospores produced secondary metabolites and the enzymes occurred in the experiments using conidia, whereas in culture filtrate experiments this stage did not occur because the two stages of filtration were already carried out to separate conidia from the filtrate. Therefore, the process of the larvae starting to be ill in the culture filtrate was faster than the conidia experiment. In the next

process, the toxins from secondary metabolites began to kill the host insect but the death of the host insect was not only by the toxin but also by the mechanical damage of the fungal penetration into the body of the insect (El-Ghany 2015).

The reduction of the weight of the eaten affected the weight of the larvae. At 1 x 24 hours after the larvae were treated with culture filtrate or EPF conidia, the weight of the *S. litura* larvae did not show any significant difference, starting on the second day the larvae weight began to be lower than that of the control (Table 4), as well as the third day up to the 12 days the larvae weight was lower than that of the control. All the tested species of the EPF decreased significantly the larvae body weight compared to that of the control. Consequently, the larvae treated with mycoinsecticides containing the culture filtrate or EPF conidia could reduce the larvae appetite to make their bodyweight decrease.

Percentage of the mortality or mortality of the larvae caused by the EPF culture filtrate showed significant differences when compared to that of the control (Table 5). All EPF species were toxic to *S. litura* larvae, both their culture filtrate and conidia. The highest larvae mortality due to culture filtrate was found in the treatment of *P. citrinum* (98.67%) and not significantly different from the larvae mortality by *T. diversus* (96%), but significantly different from the larvae mortality by *B. bassiana* (86.67%) and *M. anisopliae* (82.67%). The LT₅₀ larvae treated with culture filtrate *T. diversus* was the shortest (6.19 days) and not significantly different from the LT₅₀ larvae treated with *P. citrinum* (6.62 days), but significantly different from the LT₅₀ larvae treated with *B. bassiana* (7.55 days)

and *M. anisopliae* (7.60 days). Thus, the most toxic EPF species against *S. litura* larvae was *P. citrinum*. The larvae mortality due to the EPF conidia showed significant differences when compared to that of the control (Table 5). All of the EPF species were pathogenic to *S. litura* larvae. The larvae mortality caused by the conidia was highest in *P. citrinum* (98.67%) which was not significantly different from the larvae mortality by *T. diversus* (97.33%), *B. bassiana* (86.67%), and *M. anisopliae* (86.67%). The LT_{50} of the larvae treated with the conidia of *P. citrinum* was the shortest (5.45 days) and not significantly different from the LT_{50} of larvae treated with *T. diversus* (6.55 days), but it was significantly different from the LT_{50} of larvae treated with *B. bassiana* (8.88 days) and *M. anisopliae* (7.70 days). Thus, the most pathogenic EPF species against *S. litura* larvae was *P. citrinum*.

Both culture filtrate and conidia of EPF in this study had significantly higher insecticidal activity than the control, and the highest insecticidal activity was found in *P. citrinum*. *P. citrinum* had the highest insecticidal activity due to its ability to infect the larvae faster shown by its LT_{50} value which was the shortest compared to the other species. Altre and Vandenberg (2001) state that the most pathogenic EPF species due to the fungus has germ tubes that are able to penetrate the insect cuticle faster than other fungal species and have more toxins and enzymes that disrupt normal cell metabolism in insects. In addition, the color of the *P. citrinum* culture filtrate was the darkest compared to the color of the culture filtrate of the other three EPF species. The darker color of the EPF culture filtrate proved to be more toxic than the lighter color of the culture filtrate (Ayudya et al. 2019; Gustianingtyas et al., 2020) because the darker the color of the fungus culture filtrate the higher the concentration of the secondary metabolites (Luo et al., 2017). The *P. citrinum* culture filtrate contains secondary metabolites and is toxic to insects, for example, patulin which can kill *Culex quinquefasciatus* larvae up to 100% (Maketon et al. 2014). *P. citrinum* is reported to be effective in killing insect pests (Foo et al. 2017; Maketon et al. 2014) and mite pests (Mazid et al. 2016).

The other EPF species were also toxic because they had enzymes or secondary metabolites that could kill the host insects, for example, *B. bassiana* produced the enzymes of proteolytic and chitinolytic that could disrupt normal cell metabolism (Mancillas-Paredes et al. 2019). The secondary metabolite produced by *B. bassiana* containing the bassianolone B toxic to the *T. molitor* larvae (Luo et al. 2017). *M. anisopliae* produces secondary metabolites, including destruxins toxic to insect pests (Borisade et al. 2016). So far there has been no information on the secondary metabolites or enzymes produced by *T. diversus* that kills insects. At present, there is only general information stating that *T. diversus* can kill insects (Visagie et al. 2009). For this reason, in the future, it is necessary to study to identify the secondary metabolites or *T. diversus* enzymes that can kill insect pests.

Table 5. Mean of larvae mortality and LT_{50} of *Spodoptera litura* larvae treated with culture filtrates and conidia of mycoinsecticides from *Penicillium citrinum*, *Talaromyces diversus*, *Beauveria bassiana*, and *Metarhizium anisopliae*

Fungal species	Mortality \pm SE (%)	$LT_{50} \pm$ SE (days)
Culture filtrate		
<i>P. citrinum</i>	98.67 \pm 1.09 c	6.62 \pm 0.135 a
<i>T. diversus</i>	96.00 \pm 1.89 c	6.19 \pm 0.072 a
<i>B. bassiana</i>	86.67 \pm 2.88 b	7.55 \pm 0.154 a
<i>M. anisopliae</i>	82.67 \pm 1.09 b	7.60 \pm 0.203 b
Control	0.00 \pm 0.00 a	-
F-value	187.26*	13.12*
P-value	0.00000006	0.00480044
HSD value	11.38	0.87
Conidia		
<i>P. citrinum</i>	98.67 \pm 1.09 b	5.45 \pm 0.232 a
<i>T. diversus</i>	97.33 \pm 2.18 b	6.55 \pm 0.081 ab
<i>B. bassiana</i>	86.67 \pm 1.09 b	8.88 \pm 0.420 c
<i>M. anisopliae</i>	86.67 \pm 1.09 b	7.70 \pm 0.404 bc
Control	0.00 \pm 0.00 a	-
F-value	156.31*	29.38*
P-value	0.00000013	0.00055
HSD value	12.70	1.24

Note: * = significantly different; values within a column followed by the same letters were not significantly different at $P < 0.05$ according to Tukey's HSD test.

The *S. litura* larvae treated with EPF culture or conidia showed the same behavior, i.e., they ate less and less and got lazy to move, while the control not treated with the EPF continued to eat greedily and actively moved. After 3 days the larvae given culture filtrate began to change integument color that was previously bright green to dull and began to find dead larvae and the same symptoms occurred in larvae treated with EPF conidia. Four days after the larvae were treated with culture filtrate or EPF conidia, the larvae's body began to shrink, wrinkle, get odorless and dull black, and eventually died (Figure 6 and 7). After 2-3 days the larvae died, the symptoms in the larvae integument died due to the conidia covered by mycelia and the conidia appeared, whereas in larvae that died due to the culture filtrate there was no mycelia and conidia.

Thus, the symptoms of ill *S. litura* larvae caused by the culture filtrate were slightly different from the symptoms caused by the EPF conidia. The symptoms of sick larvae due to the culture of this filtrate were the same as the symptoms described by Ayudya et al. (2019) and Gustianingtyas et al. (2020), namely the larvae got shrunk, wrinkled, dry, odorless, and the integument was not covered by EPF conidia. The symptoms of sick insects caused by EPF conidia in this study were the same as those described by Bugti et al. (2018) and Sumikarsih et al. (2019), that is, the insect's body got smaller, wrinkled, dry, odorless, and the integument was covered in mycelia and EPF conidia.

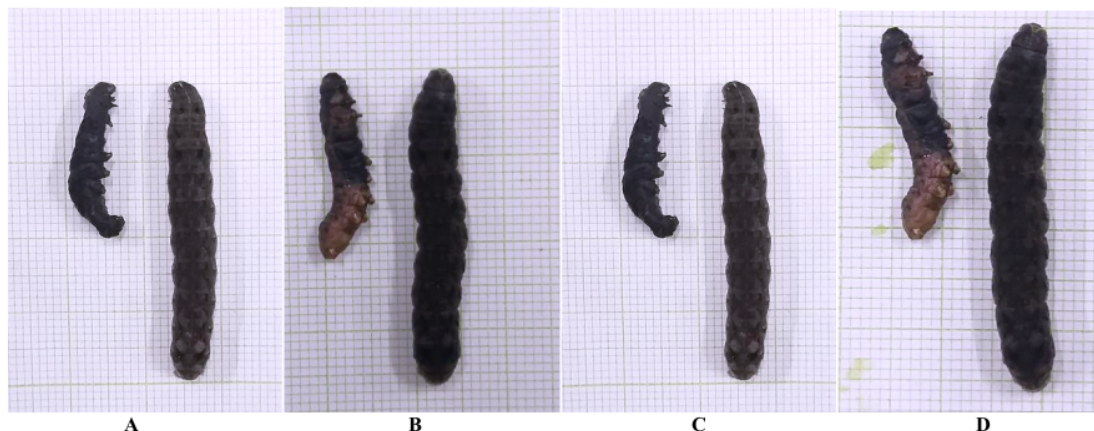


Figure 6. Morphology of *Spodoptera litura* larvae of healthy larvae of control (right) and dead larvae (left) treated with culture filtrate of mycoinsecticides from *Penicillium citrinum* (A), *Talaromyces diversus* (B), *Beauveria bassiana* (C), and *Metarhizium anisopliae* (D)

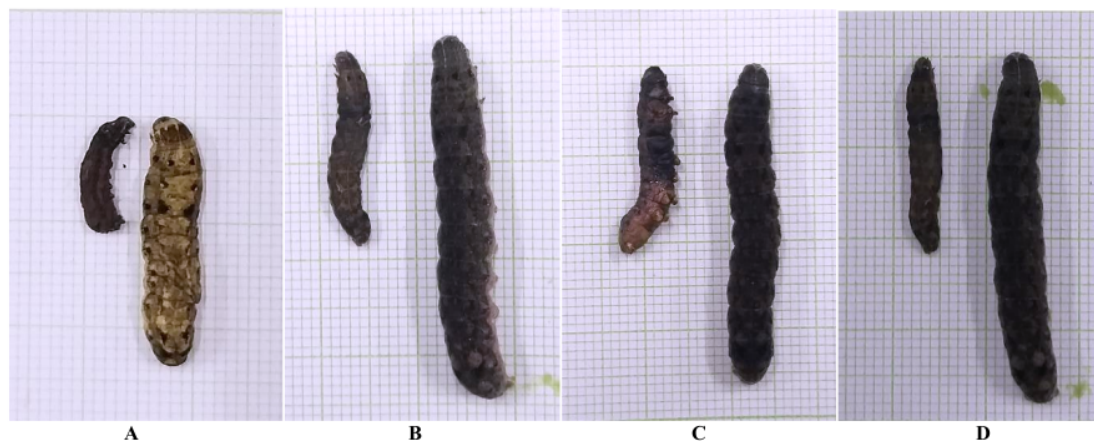


Figure 7. Morphology of *Spodoptera litura* larvae of healthy larvae of control (right) and dead larvae (left) treated with conidia of mycoinsecticides from *Penicillium citrinum* (A), *Talaromyces diversus* (B), *Beauveria bassiana* (C), and *Metarhizium anisopliae* (D)

The results of bioassays of culture filtrate and EPF conidia showed that both culture filtrate and conidia had high insecticidal activity. However, for the future development of mycoinsecticides, the use of culture filtrate without conidia as the active ingredient of mycoinsecticide needs to be further investigated. The fungus culture filtrate is relatively more stable than the culture that still has conidia and can be stored for a longer time and remains toxic, besides the culture filtrate does not clog the sprayer nozzle when sprayed (Soesanto et al. 2019).

The conclusion of this research is that the EPF species found in the soils of South Sumatra were *P. citrinum*, *T. diversus*, *B. bassiana*, and *M. anisopliae*. All species have a high insecticidal activity against *S. litura* larvae and the most toxic species is *P. citrinum*. The filtrate and conidia of

the *P. citrinum* are toxic. *P. citrinum*, a new emerging entomopathogenic fungus, has the highest insecticidal activity and the highest potential to be developed into commercial mycoinsecticides.

2 ACKNOWLEDGEMENTS

1 This research was funded by the scheme of Applied Research (Riset Terapan) with budget year of 2020 according to Directorate of Research and Community Service (*Direktorat Riset dan Pengabdian Masyarakat*), Ministry of Research and Technology/National Research and Innovation Agency of Republic Indonesia, Grant/Contract Number: SP DIPA-042.06.1.401516/2020.

REFERENCES

- Alhusein N, Scott J, Kasprzyk-Hordern B, Bolhuis A. 2016. Development of a filter to prevent infections with spore-forming bacteria in injecting drug users. *Harm Reduct J* 13: 1-8. DOI: 10.1186/s12954-016-0122-1.
- Altre JA, Vandenberg JD. 2001. Factors influencing the infectivity of isolates of *Paecilomyces fumosoroseus* against diamondback moth, *Plutella xylostella*. *J Invertebr Pathol* 78: 31-36. DOI: 10.1006/jip.2001.5043.
- Anwar W, Khan SN, Aslam M, Haider MS, Shahid AA, Ali M. 2015. Exploring fungal flora associated with insects of cotton agroecological zones of Punjab, Pakistan. *Pakistan Entomol* 37: 27-31.
- Ayudya DR, Herlinda S, Suwandi S. 2019. Insecticidal activity of culture filtrates from liquid medium of *Beauveria bassiana* isolates from South Sumatra (Indonesia) wetland soil against larvae of *Spodoptera litura*. *Biodiversitas* 20: 2101-2109. DOI: 10.13057/biodiv/d200802.
- Borisade OA, Medina A, Magan N. 2016. Interacting temperature and water activity modulate production of destruxin A by *Metarhizium anisopliae* on Galleria larvae-modified agar-based media invitro. *West African J Appl Ecol* 24: 31-42.
- Bugti GA, Bin W, Na C, Feng LH. 2018. Pathogenicity of *Beauveria bassiana* strain 202 against sap-sucking insect pests. *Plant Prot Sci* 54: 111-117. DOI: 10.17221/45/2017-PPS.
- Chen Z, Xu L, Yang F, Ji G, Yang J, Wang J. 2014. Efficacy of *Metarhizium anisopliae* isolate MAX-2 from Shangri-la, China under desiccation stress. *BMC Microbiol* 14: 4. DOI: 10.1186/1471-2180-14-4.
- El-Ghany TMA. 2015. Entomopathogenic Fungi and their Role in Biological Control. Biology Department, Faculty of Science Jazan University KSA, Cairo. DOI: 10.4172/978-1-63278-065-2-66.
- Fernandes EKK, Rangel DEN, Moraes AM, Bittencourt VREP, Roberts DW. 2007. Variability intolerance to UV-B radiation among *Beauveria* spp. isolates. *J Invertebr Pathol* 96: 237-243. DOI: 10.1016/j.jip.2007.05.007.
- Foo K, Seelan JSS, Dawood MM. 2017. Microfungi associated with *Pteroptyx bearni* (Coleoptera: Lampyridae) eggs and larvae from Kawang River, Sabah (Northern Borneo). *Insects* 8: 1-12. DOI: 10.3390/insects8030066.
- Gustianingtyas M, Herlinda S, Suwandi, Suparman, Hamidson H, Hasbi, Setiawan A, Verawaty M, Elfita, Arsi. 2020. Toxicity of entomopathogenic fungal culture filtrate of lowland and highland soil of South Sumatra (Indonesia) against *Spodoptera litura* larvae. *Biodiversitas* 21: 1839-1849. DOI: 10.13057/biodiv/d210510.
- Hernandez-Trejo A, Estrada-Drouaillet B, López-Santillán, J, Rios-Velasco C, Varela-Fuentes S, Rodríguez-Herrera R, Osorio-Hernández E. 2019. In vitro evaluation of native entomopathogenic fungi and neem (*Azadirachta indica*) extracts on *Spodoptera frugiperda*. *Intl J Exp Bot* 4: 75-84. DOI: 10.1037/0033-2909.126.1.78.
- Johari A, Herlinda S, Irsan C, Pujiastuti Y. 2016. *Phenomenon of Thrips* (Thysanoptera) attack on chili plant (*Capsicum annum*). *Am J Agric Biol Sci* 11: 103-109. DOI: 10.3844/ajabssp.2016.103.109.
- Kumar S, Stecher G, Tamura K. 2016. MEGA7: Molecular evolutionary genetics analysis version 7.0 for bigger data sets. *Mol Biol Evol* 33: 1870-1874. DOI: 10.1093/molbev/msw054.
- Liu SF, Wang GJ, Nong XQ, Liu B, Wang MM, Li SL, Cao GC, Zhang ZH. 2017. Entomopathogen *Metarhizium anisopliae* promotes the early development of peanut root. *Plant Prot Sci* 53: 101-107. DOI: 10.17221/49/2016-PPS.
- Lopes RB, Souza DA, Rocha LFN, Montalva C, Luz C, Humber RA, Faria M. 2018. *Metarhizium alvesii* sp. nov.: A new member of the *Metarhizium anisopliae* species complex. *J Invertebr Pathol* 151: 165-168. DOI: 10.1016/j.jip.2017.12.001.
- Luo Z, Ren H, Mousa JJ, Rangel DEN, Zhang Y, Bruner SD, Keyhani NO. 2017. The PacC transcription factor regulates secondary metabolite production and stress response, but has only minor effects on virulence in the insect pathogenic fungus *Beauveria bassiana*. *Environ Microbiol* 19: 788-802. DOI: 10.1111/1462-2920.13648.
- Maketon M, Amnuaykanjanasin A, Kaysorngup A. 2014. A rapid knockdown effect of *Penicillium citrinum* for control of the mosquito *Culex quinquefasciatus* in Thailand. *World J Microbiol Biotechnol* 30: 727-736. DOI: 10.1007/s11274-013-1500-4.
- Mancillas-Paredes J, Hernández-Sánchez H, Jaramillo-Flores ME, García-Gutiérrez C. 2019. Proteases and chitinases induced in *Beauveria bassiana* during infection by *Zabrotes subfasciatus*. *Southwest. Entomol* 44: 125-137. DOI: 10.3958/059.044.0114.
- Mascarin GM, Jackson MA, Kobori NN, Behle RW, Delalibera Júnior Í. 2015. Liquid culture fermentation for rapid production of desiccation-tolerant blastospores of *Beauveria bassiana* and *Isaria fumosorosea* strains. *J Invertebr Pathol* 127: 11-20. DOI: 10.1016/j.jip.2014.12.001.
- Mathew AJ, Jayachandran K, Mathew J. 2010. Endophytic *Penicillium citrinum* Thom. from *Scoparia dulcis* Linn. *Indian J Microbiol* 50: 99-102. DOI: 10.1007/s12088-010-0065-2.
- Mazid S, Kalita JC, Rajkhowa RC. 2016. Biocontrol potential of *Penicillium citrinum* and *Penicillium chrysogenum* against red spider mite, *Oligonychus coffeae* Nietner infesting tea. *J Entomol Res* DOI: 10.5958/0974-4576.2016.00008.6.
- Ngangambe MH, Mwatawala MW. 2020. Effects of entomopathogenic fungi (EPFs) and cropping systems on parasitoids of fall armyworm (*Spodoptera frugiperda*) on maize in eastern central, Tanzania. *Biocontrol Sci Technol* 30: 1-13. DOI: 10.1080/09583157.2020.1726878.
- Safitri A, Herlinda S, Setiawan A. 2018. Entomopathogenic fungi of soils of freshwater swamps, tidal lowlands, peatlands, and highlands of South Sumatra, Indonesia. *Biodiversitas* 19: 2365-2373. DOI: 10.13057/biodiv/d190647.
- Sharma L, Oliveira I, Torres L, Marques G. 2018. Entomopathogenic fungi in Portuguese vineyards soils: suggesting a 'Galleria-Tenebrio-bait method' as bait-insects *Galleria* and *Tenebrio* significantly underestimate the respective recoveries of *Metarhizium (robertsii)* and *Beauveria (bassiana)*. *MycKeys* 23: 1-23. DOI: 10.3897/mycokeys.38.26970.
- Siaga E, Lakitan B, Hasbi H, Bernas SM, Widuri LI, Kartika K. 2019. Floating seedbed for preparing rice seedlings under unpredictable flooding occurrence at tropical riparian wetland. *Bulg J Agric Sci* 25: 326-336.
- Soesanto L, Mugiastuti E, Manan A. 2019. Raw secondary metabolites application of two *Trichoderma harzianum* isolates towards vascular streak dieback on cocoa seedlings. *Pelita Perkebunan* 35: 22-32. DOI: 10.22302/icc.jur.pelita.perkebunan.v35i1.346.
- Souza ML, Sanches MM, Souza DA, Faria M, Espinel-Correal C, Sihler W, Lopes RB. 2019. Within-host interactions of *Metarhizium rileyi* strains and nucleopolyhedroviruses in *Spodoptera frugiperda* and *Anticarsia gemmatilis* (Lepidoptera: Noctuidae). *J Invertebr Pathol* 162: 10-18. DOI: 10.1016/j.jip.2019.01.006.
- Sownya G, Ramanagouda SH, Jayappa J. 2017. Lethal and sub-lethal effects of indigenous isolates of *Metarhizium anisopliae* (Metchnikoff) Sorokin against *Spodoptera litura* (Fabricius). *Entomol Zool Stud* 5: 1154-1160.
- Sumikarsih E, Herlinda S, Pujiastuti Y. 2019. Conidial density and viability of *Beauveria bassiana* isolate from Java and Sumatra and their virulence against *Nilaparvata lugens* at different temperatures. *Agrivita J Agric Sci* 41: 335-349. DOI: 10.17503/agrivita.v41i2.2105.
- Suwandi, Ammar M, Chandra I. 2012. Application of extract compost increased yield and suppressed the diseases of ratoon rice crop in tidal swamp of Banyuasin Regency. *J Suboptimal Lands* 1: 116-122. DOI: 10.33230/JLSO.1.2.2012.15. [Indonesian]
- Syamsudin TS, Faizal A, Kirana, R. 2019. Dataset on antixenosis and antibiosis of chili fruit by fruit fly (*Bactrocera dorsalis*) infestation. *Data Brief* 23:103758. DOI: 10.1016/j.dib.2019.103758.
- Thaochan N, Sausa-Ard W. 2017. Occurrence and effectiveness of indigenous *Metarhizium anisopliae* against adults *Zeugodacus cucurbitae* (Coquillett) (Diptera: Tephritidae) in Southern Thailand. *Songklanakarin J Sci Technol* 39: 325-334. DOI: 10.14456/sjstpsu.2017.35.
- Tompe AA, Hole UB, Kulkarni SR, Chaudhari CS, Chavan SK. 2020. Studies on seasonal incidence of leaf-eating caterpillar, *Spodoptera litura* (Fab.) infesting capsicum under polyhouse condition. *J Entomol Zool Stud* 8: 761-764.
- Vijayalakshmi P, Vijayalakshmi T, Naidu LN. 2016. Evaluation of certain insecticide molecules against chillipod borer, *Spodoptera litura* in Andhra Pradesh. *J Res ANGRAU* 44: 26-30.
- Visagie CM, Jacobs K. 2012. Three new additions to the genus *Talaromyces* isolated from Atlantis sandveld fynbos soils. *Persoonia* 28: 14-24. DOI: 10.3767/00315812X632455.

- Visagie CM, Roets F, Jacobs K. 2009. A new species of *Penicillium*, *P. ramulosum* sp. nov., from the natural environment. *Mycologia* 101: 888-895. DOI: 10.3852/08-149
- White T, Bruns T, Lee S, Taylor J. 1990. Amplification and direct sequencing of fungal ribosomal RNA genes for phylogenetics. In: Innis MA, Gelfand DH, Sninsky JJ, White TJ (eds.). *PCR Protocols: A Guide to Methods and Applications*. Academic Press Inc., New York.
- Yang H, Qin CS, Chen YM, Zhang GY, Dong LH, Wan SQ. 2019. Persistence of *Metarhizium* (Hypocreales: Clavicipitaceae) and *Beauveria bassiana* (Hypocreales: Clavicipitaceae) in tobacco soils and potential as biocontrol agents of *Spodoptera litura* (Lepidoptera: Noctuidae). *Environ Entomol* 48: 147-155. DOI: 10.1093/ee/nvy161
- Youssef NA. 2014. Effect of certain entomopathogenic fungi and nematode on the desert locust *Schistocerca gregaria* (Forsk.). *Ann Agric Sci* 59: 125131. DOI: 10.1016/j.aoads.2014.06.017.



Scimago Journal & Country Rank

Enter Journal Title, ISSN or Publisher Name

- Home
- Journal Rankings
- Country Rankings
- Viz Tools
- Help
- About Us



Ads by Google

Biodiversitas

1'

H Inde

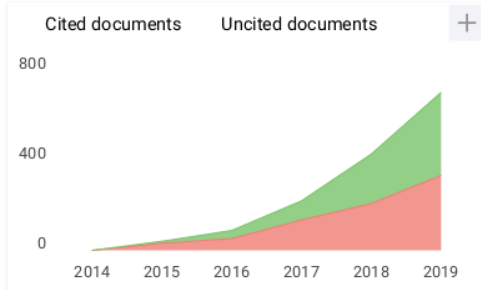
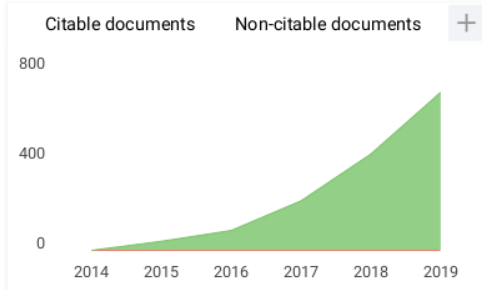
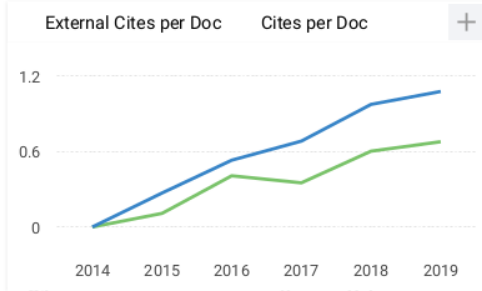
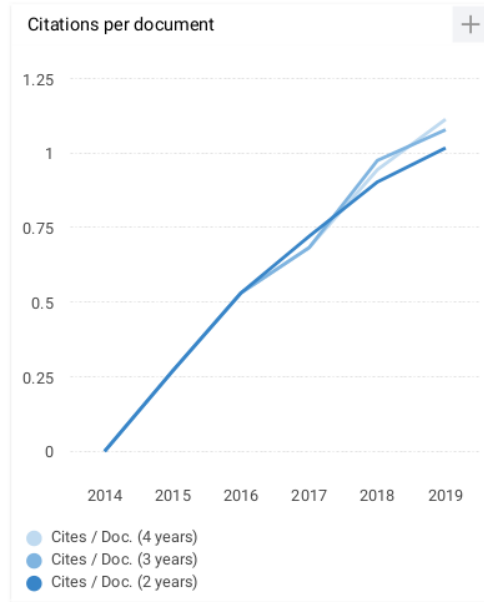
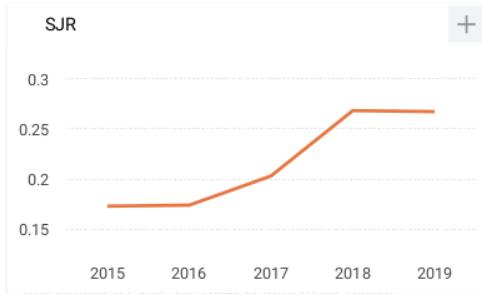
Country	Indonesia -  SIR Ranking of Indonesia
Subject Area and Category	<p>Agricultural and Biological Sciences</p> <ul style="list-style-type: none"> Animal Science and Zoology Plant Science <p>Biochemistry, Genetics and Molecular Biology</p> <ul style="list-style-type: none"> Molecular Biology
Publisher	Biology department, Sebelas Maret University Surakarta -  SCImago Institutions Ranking
Publication type	Journals
ISSN	1412033X, 20854722
Coverage	2014-2020
Scope	"Biodiversitas, Journal of Biological Diversity" or Biodiversitas encourages submission of manuscripts dealing with all biodi aspects of plants, animals and microbes at the level of gene, species, and ecosystem.
	<p>Homepage</p> <p>How to publish in this journal</p> <p>Contact</p> <p> Join the conversation about this journal</p>



Ads by Google

Quartiles





Biodiversitas ← Show this widget in your own website

Animal Science and Zoology

Q3 best quartile

SJR 2019 0.27

powered by scimagojr.com

Just copy the code below and paste within your html code:

```
<a href="https://www.scimagojr.com" data-bbox="275 780 390 790">
```

Metrics based on Scopus® data as of April 2020

BIODIVERSITAS

Journal of Biological Diversity
Volume 21 - Number 10 - October 2020

ISSN/E-ISSN:

1412-033X (printed edition), 2085-4722 (electronic)

EDITORIAL BOARD:

Abdel Fattah N.A. Rabou (Palestine), **Agnieszka B. Najda** (Poland), **Ajay Kumar Gautam** (India), **Alan J. Lymbery** (Australia),
Annisa (Indonesia), **Bambang H. Saharjo** (Indonesia), **Daiane H. Nunes** (Brazil), **Darlina Md. Naim** (Malaysia),
Ghulam Hassan Dar (India), **Hassan Pourbabaei** (Iran), **Joko R. Witono** (Indonesia), **Kartika Dewi** (Indonesia),
Katsuhiko Kondo (Japan), **Kusumadewi Sri Yulita** (Indonesia), **Livia Wanntorp** (Sweden), **M. Jayakara Bhandary** (India),
Mahdi Reyahi-Khoram (Iran), **Mahendra K. Rai** (India), **Mahesh K. Adhikari** (Nepal), **Maria Panitsa** (Greece),
Mochamad A. Soendjoto (Indonesia), **Mohib Shah** (Pakistan), **Mohamed M.M. Najim** (Srilanka), **Nurhasanah** (Indonesia),
Praptiwi (Indonesia), **Rasool B. Tareen** (Pakistan), **Seyed Aliakbar Hedayati** (Iran), **Seyed Mehdi Talebi** (Iran), **Shahabuddin** (Indonesia),
Shahir Shamsir (Malaysia), **Shri Kant Tripathi** (India), **Subhash C. Santra** (India), **Sugeng Budiharta** (Indonesia), **Sugiyarto** (Indonesia),
Taufiq Purna Nugraha (Indonesia), **Yosep S. Mau** (Indonesia)

EDITOR-IN-CHIEF:

Sutarno

EDITORIAL MEMBERS:

English Editors: **Graham Eagleton** (grahameagleton@gmail.com), **Suranto** (surantouns@gmail.com); Technical Editor: **Solichatun**
(solichatun_s@yahoo.com), **Artini Pangastuti** (pangastuti_tutut@yahoo.co.id); Distribution & Marketing: **Rita Rakhmawati**
(oktia@yahoo.com); Webmaster: **Ari Pitoyo** (aripitoyo@yahoo.com)

MANAGING EDITORS:

Ahmad Dwi Setyawan (unsjournals@gmail.com)

PUBLISHER:

The Society for Indonesian Biodiversity

CO-PUBLISHER:

Department of Biology, Faculty of Mathematics and Natural Sciences, Sebelas Maret University, Surakarta

ADDRESS:

Jl. Ir. Sutami 36A Surakarta 57126. Tel. +62-271-7994097, Tel. & Fax.: +62-271-663375, email: editors@smujo.id

ONLINE:

biodiversitas.mipa.uns.ac.id; smujo.id/biodiv



Society for Indonesia
Biodiversity



Sebelas Maret University
Surakarta

Published by Smujo Intemational for The Society for Indonesian Biodiversity and Sebelas Maret University Surakarta

GUIDANCE FOR AUTHORS

Aims and Scope *Biodiversitas*, *Journal of Biological Diversity* or abbreviated as *Biodiversitas* encourages submission of manuscripts dealing with all biodiversity aspects of plants, animals and microbes at the level of the gene, species, and ecosystem as well as ethnobiology.

Article types The journal seeks original full-length research papers, reviews, and short communication. Manuscript of original research should be written in no more than 8,000 words (including tables and picture), or proportional with articles in this publication number. Review articles will be accommodated, while, short communication should be written at least 2,000 words, except for pre-study.

Submission The journal only accepts online submission, through open journal system (<https://s.mujo.id/biodiv/about/submissions>) or email to the editors at unsjournals@gmail.com. Submitted manuscripts should be the original works of the author(s). The manuscript must be accompanied by a cover letter containing the article title, the first name and last name of all the authors, a paragraph describing the claimed novelty of the findings versus current knowledge. Submission of a manuscript implies that the submitted work has not been published before (except as part of a thesis or report, or abstract); and is not being considered for publication elsewhere. When a manuscript written by a group, all authors should read and approve the final version of the submitted manuscript and its revision; and agree the submission of manuscripts for this journal. All authors should have made substantial contributions to the concept and design of the research, acquisition of the data and its analysis; drafting of the manuscript and correcting of the revision. All authors must be responsible for the quality, accuracy, and ethics of the work.

Ethics Author(s) must obedient to the law and/or ethics in treating the object of research and pay attention to the legality of material sources and intellectual property rights.

Copyright If and when the manuscript is accepted for publication, the author(s) still hold the copyright and retain publishing rights without restrictions. Authors or others are allowed to multiply article as long as not for commercial purposes. For the new invention, authors are suggested to manage its patent before published.

Open access The journal is committed to free-open access that does not charge readers or their institutions for access. Readers are entitled to read, download, copy, distribute, print, search, or link to the full texts of articles, as long as not for commercial purposes. The license type is CC-BY-NC-SA.

Acceptance The only articles written in English (U.S. English) are accepted for publication. Manuscripts will be reviewed by editors and invited reviewers (double blind review) according to their disciplines. Authors will generally be notified of acceptance, rejection, or need for revision within 1 to 2 months of receipt. The manuscript is rejected if the content does not in line with the journal scope, does not meet the standard quality, inappropriate format, complicated grammar, dishonesty (i.e. plagiarism, duplicate publications, fabrication of data, citations manipulation, etc.), or ignoring correspondence in three months. The primary criteria for publication are scientific quality and biodiversity significance. **Uncorrected proofs** will be sent to the corresponding author by email as *doc* or *docx* files for checking and correcting of typographical errors. To avoid delay in publication, corrected proofs should be returned in 7 days. The accepted papers will be published online in a chronological order at any time, but printed in the early of each month (12 times).

A charge Starting on January 1, 2019, publishing costs waiver is granted to authors of graduate students from **Least Developed Countries**, who first publish the manuscript in this journal. However, other authors are charged USD 250 (IDR 3,500,000). Additional charges may be billed for language editing, USD 75-150 (IDR 1,000,000-2,000,000).

Reprints The sample journal reprint is only available by special request. Additional copies may be purchased when ordering by sending back the uncorrected proofs by email.

Manuscript preparation Manuscript is typed on A4 (210x297 mm²) paper size, in a single column, single space, 10-point (10 pt) Times New Roman font. The margin text is 3 cm from the top, 2 cm from the bottom, and 1.8 cm from the left and right. Smaller lettering size can be applied in presenting table and figure (9 pt). Word processing program or additional software can be used, however, it must be PC compatible and Microsoft Word based (*doc* or *rtf*; not *docx*). **Scientific names** of species (incl. subspecies, variety, etc.) should be written in italic, except for italic sentence. Scientific name (genera, species, author), and cultivar or strain should be mentioned completely for the first time mentioning it in the body text, especially for taxonomic manuscripts. Name of genera can be shortened after first mentioning, except generating confusion. Name of the author can be eliminated after first mentioning. For example, *Rhizopus oryzae* L. UICC 524, hereinafter can be written as *R. oryzae* UICC 524. Using trivial name should be avoided, otherwise generating confusion. **Biochemical and chemical nomenclature** should follow the order of the IUPAC - IUB. For DNA sequence, it is better used Courier New font. Symbols of standard chemical and abbreviation of chemistry name can be applied for common and clear used, for example, completely written butilic hydroxyl toluene (BHT) to be BHT hereinafter. **Metric measurement** use IS denomination, usage other system should follow the value of equivalent with the denomination of IS first mentioning. Abbreviations set of, like g, mg, mL, etc. do not follow by dot. Minus index (m⁻², L⁻¹, h⁻¹) suggested to be used, except in things like "per-plot" or "per-plot". **Equation of mathematics** does not always can be written

down in one column with text, in that case can be written separately. **Number** one to ten are expressed with words, except if it relates to measurement, while values above them written in number, except in early sentence. The fraction should be expressed in decimal. In the text, it should be used "%" rather than "percent". Avoid expressing ideas with complicated sentence and verbiage, and used efficient and effective sentence.

Title of the article should be written in compact, clear, and informative sentence, preferably not more than 20 words. Name of author(s) should be completely written. **Name and institution** address should also be completely written with street name and number (location), postal code, telephone number, facsimile number, and email address. Manuscript written by a group, author for correspondence along with address is required. First page of the manuscript is used for writing above information.

Abstract should not be more than 200 words. **Keywords** is about five words, covering scientific and local name (if any), research theme, and special methods which used; and sorted from A to Z. All important **abbreviations** must be defined at their first mention. **Running title** is about five words. **Introduction** is about 400-600 words, covering the background and aims of the research. **Materials and Methods** should emphasize on the procedures and data analysis. **Results and Discussion** should be written as a series of connecting sentences, however, for manuscript with long discussion should be divided into subtitles. Thorough discussion represents the causal effect mainly explains for why and how the results of the research were taken place, and do not only re-express the mentioned results in the form of sentences. **Concluding** sentence should be given at the end of the discussion. **Acknowledgments** are expressed in a brief; all sources of institutional, private and corporate financial support for the work must be fully acknowledged, and any potential conflicts of interest are noted.

Figures and Tables of maximum of three pages should be clearly presented. Title of a picture is written down below the picture, while title of a table is written above the table. Colored figures can only be accepted if the information in the manuscript can lose without those images; chart is preferred to use black and white images. Author could consign any picture or photo for the front cover, although it does not print in the manuscript. All images property of others should be mentioned source. **There is no appendix**, all data or data analysis are incorporated into Results and Discussions. For broad data, it can be displayed on the website as a supplement.

References Author-year citations are required. In the text give the authors name followed by the year of publication and arrange from oldest to newest and from A to Z. In citing an article written by two authors, both of them should be mentioned, however, for three and more authors only the first author is mentioned followed by et al., for example: Saharjo and Nurhayati (2006) or (Boonkerd 2003a, b, c; Sugiyarto 2004; El-Bana and Nijs 2005; Balagadde et al. 2008; Webb et al. 2008). Extent citation as shown with word "cit" should be avoided. Reference to unpublished data and personal communication should not appear in the list but should be cited in the text only (e.g., Rifai MA 2007, pers. com. (personal communication); Setyawan AD 2007, unpublished data). In the reference list, the references should be listed in an alphabetical order (better, if only 20 for research papers). Names of journals should be abbreviated. Always use the standard abbreviation of a journal's name according to the **ISSN List of Title Word Abbreviations** (www.issn.org/2-22661-LTWA-online.php). The following examples are for guidance.

Journal:

Saharjo BH, Nurhayati AD. 2006. Domination and composition structure change at hemic peat natural regeneration following burning; a case study in Pelalawan, Riau Province. *Biodiversitas* 7: 154-158.

Book:

Rai MK, Carpinella C. 2006. *Naturally Occurring Bioactive Compounds*. Elsevier, Amsterdam.

Chapter in book:

Webb CO, Camon CH, Davies SJ. 2008. Ecological organization, biogeography, and the phylogenetic structure of rainforest tree communities. In: Carson W, Schnitzer S (eds) *Tropical Forest Community Ecology*. Wiley-Blackwell, New York.

Abstract:

Assaeed AM. 2007. Seed production and dispersal of *Rhazya stricta*. 50th annual symposium of the International Association for Vegetation Science, Swansea, UK, 23-27 July 2007.

Proceeding:

Alikodra HS. 2000. Biodiversity for development of local autonomous government. In: Setyawan AD, Sutarno (eds.) *Toward Mount Lawu National Park; Proceeding of National Seminary and Workshop on Biodiversity Conservation to Protect and Save Germplasm in Java Island*. Universitas Sebelas Maret, Surakarta, 17-20 July 2000. [Indonesian]

Thesis, Dissertation:

Sugiyarto. 2004. *Soil Macro-invertebrates Diversity and Inter-Cropping Plants Productivity in Agroforestry System based on Sengon*. [Dissertation]. Universitas Brawijaya, Malang. [Indonesian]

Information from internet:

Balagadde FK, Song H, Ozaki J, Collins CH, Barnett M, Arnold FH, Quake SR, You L. 2008. A synthetic *Escherichia coli* predator-prey ecosystem. *Mol Syst Biol* 4: 187. www.molecularsystemsbiology.com

New emerging entomopathogenic fungi isolated from soil in South Sumatra (Indonesia) and their filtrate and conidial insecticidal activity against *Spodoptera litura*

ORIGINALITY REPORT

9%

SIMILARITY INDEX

PRIMARY SOURCES

1	ejbpc.springeropen.com Internet	373 words — 5%
2	journal.ipb.ac.id Internet	228 words — 3%
3	garuda.kemdikbud.go.id Internet	63 words — 1%
4	www.frontiersin.org Internet	45 words — 1%

EXCLUDE QUOTES ON

EXCLUDE BIBLIOGRAPHY ON

EXCLUDE SOURCES < 1%

EXCLUDE MATCHES < 1 WORDS