

BUKTI KORESPONDENSI
ARTIKEL PROCEEDING TERINDEKS SCOPUS

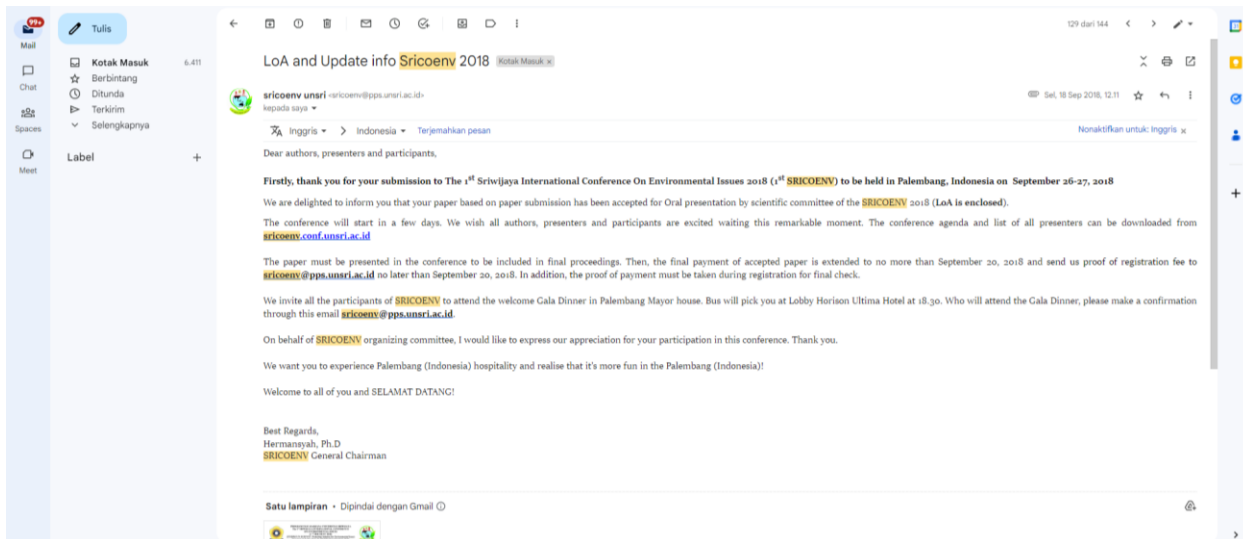
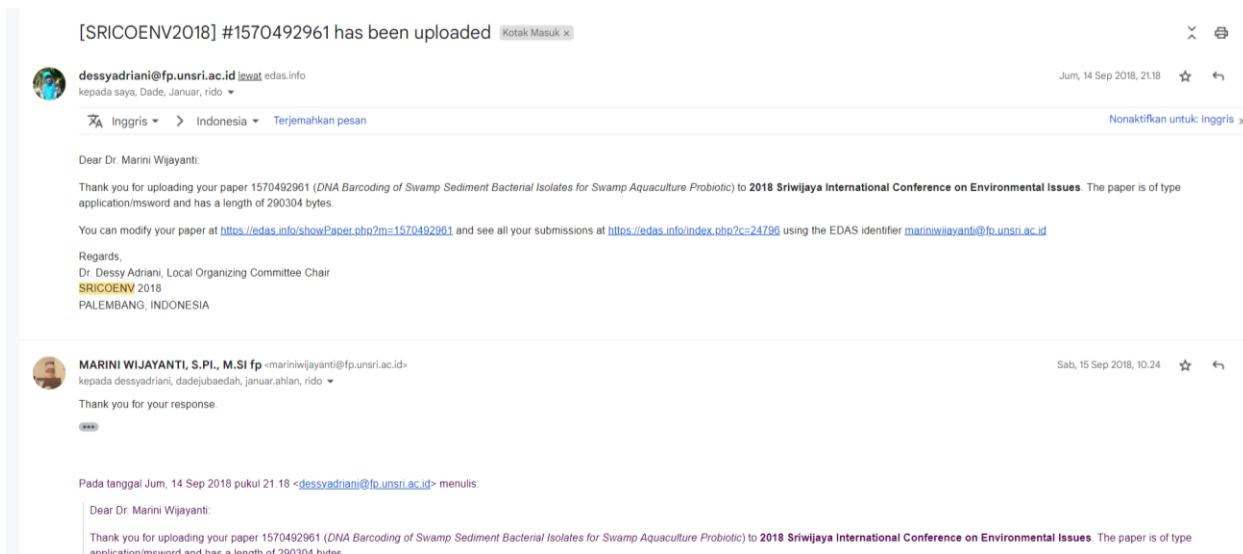
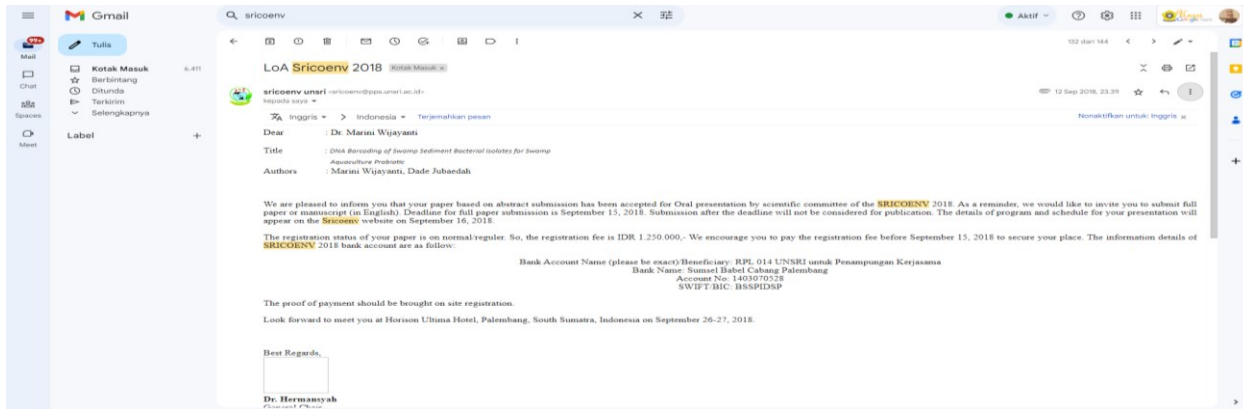
Judul artikel : **DNA Barcoding of Swamp Sediment Bacterial Isolates for Swamp Aquaculture Probiotic**

Konferensi : The 1st Sriwijaya International Conference on Environmental Issues 2018, E3S Web of Conferences

Penulis : Marini Wijayanti, Dade Jubaedah, Januar Ahlan Suhada, Siti Yuliani, Nabilah Saraswati, Tanbiyaskur, Mochamad Syaifudin, Hary Widjajanti

No.	Perihal	Tanggal
1	Bukti konfirmasi submit artikel dan artikel yang disubmit	12 September 2018
2	Bukti konfirmasi review dan hasil review pertama	7 Oktober 2018
3	Bukti konfirmasi submit revisi pertama, respon kepada reviewer, dan artikel yang diresubmit	8 Oktober 2018
4	Bukti konfirmasi review dan hasil review kedua	-
5	Bukti konfirmasi submit revisi kedua, respon kepada reviewer, dan artikel yang di resubmit	-
6	Bukti konfirmasi artikel accepted	November 2018
7	Bukti konfirmasi artikel published online	29 November 2018

Bukti konfirmasi submit artikel dan artikel yang disubmit (12 September 2018)





PROGRAM PASCASARJANA UNIVERSITAS SRIWIJAYA
The 1st SRIWIJAYA INTERNATIONAL CONFERENCE
ON ENVIRONMENTAL ISSUES
(1ST SRICOENV 2018)
SYNERGY IN SCIENCE: Promoting Solution for Environmental Issues
Secretariat: Jl. Padang Selasa No 524 Bukit Besar Palembang 30139
Phone. 0711-352132 Fax. 0711-320310, 317202



ACCEPTANCE AND INVITATION LETTER

Palembang, September 18, 2018

Dear : Dr. Marini Wijayanti
Title : *DNA Barcoding of Swamp Sediment Bacterial Isolates for Swamp Aquaculture Probiotic*
Authors : Marini Wijayanti , Dade Jubaedah, Januar Ahlan Suhada, Siti Yuliani, Nabilah Saraswati, Tanbiyaskur, Mochamad Syaifudi, Hary Widjajanti

We are pleased to inform you that your paper based on paper submission has been accepted for Oral presentation by scientific committee of the SRICOENV 2018. More details of your review result will be sent to your EDAS account. The details of program and conferece schedule available on our website : sricoenv.conf.unsri.ac.id

We encourage you to pay the registration fee IDR 1.250.000 before September 20, 2018 to secure your place. The information details of SRICOENV 2018 bank account are as follow:

Bank Account Name (please be exact)/Beneficiary: RPL 014 UNSRI untuk Penampungan Kerjasama
Bank Name: Sumsel Babel Cabang Palembang
Account No: 1403070528
SWIFT/BIC: BSSPIDSP

The proof of payment should be brought on site registration.

Look forward to meet you at Horison Ultima Hotel, Palembang, South Sumatra, Indonesia on September 26-27, 2018.

Best Regards,


Dr. Hermansyah
General Chair

Bukti konfirmasi review dan hasil review pertama (7 Oktober 2018)

← 📄 🕒 🗑️ 📧 🕒 🔄 📧 📄 ⋮ 219 dari banyak < > ✎

[SRICOENV2018] Your Paper #1570492961 ('DNA Barcoding of Swamp Sediment Bacterial Isolates for Swamp Aquaculture Probiotic') 📧 [🔍]

Kotak Masuk x

 **dessyadriani@fp.unsri.ac.id** lewat edas.info 7 Okt 2018, 10.02 ☆ ↶
kepada saya, Dade, Januar, Hary, Tanbiyaskur, Mochamad, Siti, Nabillah, rido ▾

🌐 Inggris ▾ > Indonesia ▾ [Terjemahkan pesan](#) Nonaktifkan untuk: Inggris x

Dear Dr. Marini Wijayanti:
Congratulations - your paper #1570492961 ('DNA Barcoding of Swamp Sediment Bacterial Isolates for Swamp Aquaculture Probiotic') for SRICOENV2018 has been accepted with minor revision.

Prepare and upload revision or final manuscript before 09 October 2018

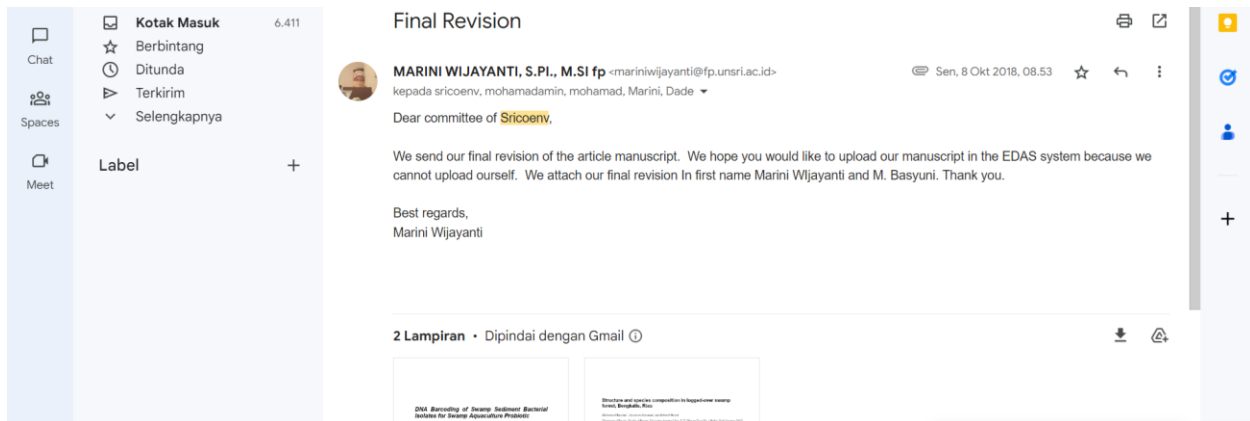
The reviews are below or can be found at <https://edas.info/showPaper.php?m=1570492961>

Regards, Dr. Dessy Adriani, Local Organizing Committee Chair
SRICOENV 2018
PALEMBANG, INDONESIA

[Thank you for the great news!](#) [Congratulations!](#) [Noted with thanks.](#)

↶ Balas [↶ Balas ke semua](#) [↷ Teruskan](#)

Submit Revisi Artikel (8 Oktober 2018)



DNA Barcoding of Swamp Sediment Bacterial Isolates for Swamp Aquaculture Probiotic

Marini Wijayanti^{1*}, *Dade Jubaedah*¹, *Januar Ahlan Suhada*¹, *Siti Yuliani*¹, *Nabilah Saraswati*¹, *Tanbiyaskur*¹, *Mochamad Syaifudin*¹, *Hary Widjajanti*²

¹Aquaculture Study Program, Department of Fisheries, Faculty of Agriculture, Sriwijaya University, Ogan Ilir, South Sumatera, Indonesia

²Department of Biology, Faculty of Mathematics & Natural Sciences, Sriwijaya University, Ogan Ilir, South Sumatera, Indonesia

Abstract. Bacteria derived from swamp sediments and aquaculture ponds potential to be probiotics. The study aims to determine the sequence of 16S r RNA gene of isolate of probiotics candidate bacteria from sediment of swamp, to determine the phylogenetic tree between the bacterial species from isolates and Gene Bank data central for their potential as probiotic. The samples of bacteria resulted from pure isolation selected from the sediment of pond cultivation and swamp waters at Lebung Karang Reservation, Ogan Ilir Regency, Indralaya, South Sumatra. This study was started from cultivating bacteria, extracting DNA of bacteria, amplification 16S r RNA genes by PCR, running electrophoresis, and sequencing the amplicon for determining DNA barcodes of bacteria from sediment of swamp and rearing pond. The result of BLAST analysis showed that KA isolate had the highest similarity 97% with *Streptomyces sp.* Hjorring101 from Denmark and RA isolate had the highest similarity 98% with *Streptomyces sp.* BD99 from Pakistan. KE isolate had the highest similarity 99% with *Bacillus subtilis* CESi5 from Japan and RE isolate had the highest similarity 93% with *Bacillus sp.* 2bFR from Manado. All of isolates were bacteria potentially as swamp aquaculture probiotics.

Key words: barcoding, 16Sr RNA gene, bacteria, swamp aquaculture

1 Introduction

The swamp aquaculture had been developing at South Sumatra, Indonesia. Swamp land can be optimized based on its water level. The swamp land can be cultivated using rotation model of agriculture and aquaculture-fish farming (catfish, snake head fish, tilapia) in deep swamp land [1]. The aquaculture have unique characteristic of their system. The absorption pond make them depend on around water quality of environment. Swamp aquaculture have been one of problem solution for optimizing sub optimal low land system in order to increase welfare society by swamp fish production. The problems of swamp aquaculture are water quality and feed conversion ratio of swamp fish as like as *Channa* fish culture problems. The problem can be approached by specific swamp probiotic for increasing water quality and feed efficiency of swamp fish aquaculture.

Sediments contain abundant populations of microorganisms with high diversity [2]. Swamp sediments contain organic waste that settles at the bottom of the waters. Bacteria can grow in swamp sediments due to the presence of organic waste. Organic matter is an energy source for soil flora and fauna [3]. Bacteria from aquaculture ponds due to organic waste, some of which come from the excretion of aquatic organisms, food waste and carcasses of organisms that settle at the bottom of the pond. Bacteria derived from swamp sediments and aquaculture ponds can be used as probiotic candidates.

Probiotics are living microbial agents that are able to provide benefits to the host by improving nutritional value and utilization of feed, increasing host response to disease and improving environmental quality [4]. Probiotics will be more effective when using indigenous (native) microorganisms which obtained from the digestive tract and the environment that are the same or similar to host animals [5]. *Streptomyces* strains as well as their combination with *Bacillus* and the multistrain Bac-Strep are the most favorable probiotic candidates to be used in aquaculture because they exert a probiotic effect on shrimps by improving growth parameters, regulating immune response, modulating host and water microbiota, and increasing resistance to disease [6]. *Streptomyces* has potential as a candidate for probiotics and as well as an alternative to antibiotics in maintaining a sustainable aquaculture [7].

Common bacterial identification is carried out based on morphological, physiological, and biochemical observations [8]. Characterization of bacteria based on the appearance of morphology, physiology, and biochemical testing results are less stable, less uniform and strongly influenced by subjective judgments. This results in the number of strains of bacteria obtained are usually very small compared to the actual diversity of bacteria [9]. To ascertain the species of bacteria that are thought to be potential candidates for probiotics, there is a need for genetic identification that shows the results of specific identification. For this reason, it is necessary to know the molecular characteristics of probiotic bacteria using 16S rRNA gene sequencing. The isolation of bacterial strains that have the potential as probiotics, followed by molecular testing using 16S rRNA to ascertain the species.

DNA barcoding using 16S rRNA gene has been widely used in knowing the molecular DNA characterization of bacteria. The development of bacterial DNA barcoding with error-independent and time-saving technique has increased dramatically, which helps in identifying the microbes and understanding the microbial biodiversity [10]. In the development of swamp fish culture identification of swamp bacteria using 16S rRNA gene needed to obtain the characterization of swamp bacteria that would later be expected to be potential bacteria as probiotics and determine the structure of phylogenetic trees that have been recorded in Gen Bank. The purpose of this study were to know the feasibility of bacterial isolates that have the potential as probiotics from swamp sediments and catfish culture ponds based on their proximity to the probiotic genus by phylogenetic tree approach.

2 Material and Methods

The bacteria tested came from the location of the cultivation pond and common swamp sediments in the Reservoir Lebung Karang, Ogan Ilir Regency, Indralaya, and South Sumatra. Four bacterial colonies tested were two eubacterial colonies and two actinomycetes colonies. Eubacteria colonies implanted in new petri dishes containing NA (Nutrient Agar) media by scraping 4 quadrants to get a single colony. Petri dishes were wrapped in wrapping paper and incubated for 2 days at room temperature (28°C-30°C) and then observed until the bacteria grew [11]. Actinomycetes colonies implanted in a new petri dish containing the agar medium for YM (Yeast Malt Agar) by scraping 4 quadrants to get a single colony. The cultures were stored at 28-30°C for 5 days [12].

The bacterial DNA extraction process was carried out using Presto™ Mini gDNA Bacteria Kit (Geneaid Biotech Ltd.). The sample required 1×10^9 bacterial cell for one extraction. DNA extraction procedures were carried out in accordance with the Presto™ Mini DNA Bacteria Kit manual. PCR material was used by 25 μ l of DNA extraction. Each reaction contains: go taq green 12.5 μ l, 2 pairs of primers 16S rRNA namely primer 63f 1 μ l, primer 1387r 1 μ l, NFW (Nuclease Free Water) 6.5 μ l, template DNA 4 μ l. DNA amplification was carried out by stages: initiation cycle at 95°C for 5 minutes, denaturation at 94°C for 30 seconds, primary annealing or sticking at 50°C for 1 minute, extension or elongation at 72°C for 2 minutes in 30 cycles and the final extension at 72°C for 5 minutes [13]. PCR products were electrophoresed through 1% agarose electrophoresis gel. Loading dye as much as 1 μ L was mixed with 6 μ L of DNA inserted in each electrophoresis well. Electrophoresis was carried out with 75V power for 50 minutes and the results were soaked into 1X TAE which had been added with diamond nucleic acid dye for 30 minutes, then visualized with Gel Doc. DNA size of Gel Doc results was defined by using marker 1 kb. The amplicons that have been known for DNA size using electrophoresis, were sequenced through the Macrogen, Korea via PT Indolab, Jakarta.

The sequences that have been obtained in the form of fasta format are then aligned using MEGA 6.0 software, then the aligned sequence is taken and then BLAST (Basic Local Alignment Search Tool) is used to determine the homology of a DNA sequence or amino acid with the data contained in Genbank NCBI (National Center for Biotechnology Information) and Barcode of Life. Then all sequences were aligned to analyze genetic distance and phylogenetic trees. Phylogenetic trees between bacterial species were constructed using the Maximum Likelihood method.

2 Result and Discussion

The isolates of bacteria were 4 pure isolates consisting of 2 eubacteria isolates and 2 actinomycetes isolates, each bacteria derived from sediments of swamp waters and aquaculture ponds. The number of isolates used for cultivation and propagation of isolates is presented in Table 1.

Table 1. Bacterial isolates used in cultivation and multiplication of bacterial isolates

No.	Sample Code	Isolates	Media	Origin of Sediment
1.	KA	Actinomycetes	YM (<i>Yeast Malt Agar</i>)	Swamp Fish Pond
	RA	Actinomycetes	YM (<i>Yeast Malt Agar</i>)	Swamp water
2.	KE	Eubacteria	NA (<i>Nutrient Agar</i>)	Swamp Fish Pond
	RE	Eubacteria	NA (<i>Nutrient Agar</i>)	Swamp water

Amplification of bacterial DNA using PCR method with 16S rRNA 63F universal primer and 1387R as well as 4 μ L template from DNA from eubacteria and actinomycetes extraction. DNA visualization is presented in Figure 1. Based on Figure 1 visualization of the results of 16S rRNA amplification on actinomycetes and eubacteria measuring 1342 bp. Marchesi *et al.* (1998) arranged primers 63F and 1387R to amplify the 16S rRNA gene from Domain bacteria. This primary pair is able to amplify the gene with a size of about 1300 base pairs. Bacterial amplification using 63F and 1387R primers produced an average 16S rRNA gene fragment size of \pm 1350 bp [14].

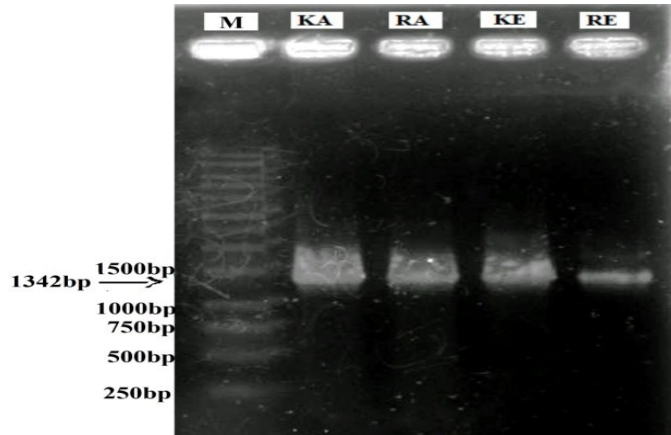


Figure 1. Visualization of the results of bacterial 16S rRNA gene amplification

M= DNA Marker 1 kb; 1= 16s rRNA gene of isolate KA;

2= 16s rRNA gene of isolate RA; 3= 16s rRNA gene of isolate KE;

4= 16s rRNA gene of isolate RE

The visualization process is one of the ways to determine the quality of DNA isolates and ensure the suitability of the primers used by looking at the base pair length (bp) [15]. The success of PCR techniques is based more on primary suitability and efficiency and optimization of the PCR process. Non-specific primers can cause amplification of other areas in the genome that are not targeted or otherwise there is no amplified genome area. PCR optimization is also needed to produce the desired character. This optimization concerns the temperature of DNA annealing in PCR machines [16].

The sequencing results that have been obtained are then aligned using the Mega 6.0 software. After aligning it produces a sequence of nucleotide bases with a length of 1324 bp (Isolate KA), 1328 bp (Isolate RA), 1324 bp (Isolate KE), and 1342 bp (Isolate RE). Furthermore, isolates were analyzed through BLASTn (Basic Local Alignment Search Tool-nucleotide) on the NCBI (National Center for Biotechnology Information) site showing the results of the percentage similarities in eubacteria and actinomycetes samples with the data contained in Genbank are presented in Table 2. Based on Table 2, the results of BLAST analysis of the 16S rRNA gene nucleotide sequences of actinomycetes samples from KA isolates had the highest identity percentage of 97% with *Streptomyces* sp. Hjorring101 from Denmark. Whereas actinomycetes from RA isolates had the highest percentage of identity 98% with *Streptomyces* sp. BD99 from Pakistan.

In eubacteria the isolate KE has the highest percentage of identity 99% with the *Bacillus tequilensis* JS5L species from China, *Bacillus* sp. BAB-6024 originating from India and *Bacillus* subsp species. CESi5 subtitles originating from Japan. Eubacteria isolate RE has the highest percentage of identity 93% with *Bacillus albus* AB-CSL3 species

originating from India, *Bacillus cereus* PCt-1 species originating from Pakistan, *Bacillus cereus* PD3 species originating from India, *Bacillus cereus* BDU8 species originating from Indonesia, *Bacillus* sp.2bFR species originating from Manado, Indonesia, *Bacillus* sp. G6 species from Bogor, Indonesia and *Bacillus thuringiensis* 13 species from Sri Lanka. If homology has a percentage close to 100% or above 97% it can be confirmed as a related species but vice versa if the homology is smaller than 97% the possibility of isolates is a new species or species cannot be confirmed [17].

Table 2. Results of BLASTn analysis of eubacteria and actinomycetes samples with data in Genbank

Bacterial Species	Identity (%)	Accession number	Origin of Samples
<i>Actinomycetes (Isolate KA)</i>			
<i>Streptomyces</i> sp. Hjorring101	97	EU010382.1	Denmark
<i>Streptomyces coelicolor</i> A-JW-07	93	MF083724.1	India
<i>Streptomyces clavuligerus</i> MTCC 7037	93	EU146061.1	India
<i>Streptomyces clavuligerus</i> A-ZN-05	93	MF083720.1	India
<i>Actinomycetes (Isolate RA)</i>			
<i>Streptomyces</i> sp. BD99	98	MF767903.1	Pakistan
<i>Streptomyces</i> sp. ess amH1	88	KF996505.1	Saudi Arabia
<i>Streptomyces</i> sp.mixed culture J3-44	88	KR029211.1	China
<i>Streptomyces</i> sp. R11	88	KY631542.1	India
<i>Eubacteria (Isolate KE)</i>			
<i>Bacillus subtilis</i> B15	99	KJ870195.1	India
<i>Bacillus tequilensis</i> JS5L	99	KX129852.1	China
<i>Bacillus</i> sp. BAB-6024	99	KY672884.1	India
<i>Bacillus</i> subsp. <i>Subtilis</i> CESi5	99	KY886250.1	Japan
<i>Eubacteria (Isolate RE)</i>			
<i>Bacillus albus</i> AB-CSL3	93	MG780242.1	India
<i>Bacillus cereus</i> PCt-1	93	KJ865573.1	Pakistan
<i>Bacillus cereus</i> PD3	93	KX343942.1	India
<i>Bacillus cereus</i> BDU8	93	KR351303.1	Indonesia
<i>Bacillus</i> sp.2bFR	93	KY038329.1	Manado,Indonesia
<i>Bacillus</i> sp.GG6	93	LC055680.1	Bogor,Indonesia
<i>Bacillus thuringiensis</i> 13	93	MG738335.1	Sri Lanka

Phylogenetic trees were constructed through the Mega 6.0 software application using the Neighbor-Joining (NJ) method [18] Maximum Composite Likelihood and Substitutions models to include d: Transitions + Transversions with 1000x bootstrap [19]. Eubacteria and actinomycetes phylogenetic trees are presented in Figure 2 and Figure 3. Two phylogenetic tree constructs were formed from 4 sequences obtained from the results of the study with 2 isolates namely actinomycetes KA and RA isolates, whereas eubacteria with isolates KE and RE isolates. Added 8 sequences for actinomycetes and 11 sequences for eubacteria derived from Genbank with accession numbers presented in Table 2.

The results of phylogenetic tree construction showed that the two samples formed different branches, the actinomycetes tree with a 0.01 scale and the eubacteria tree with a scale of 0.005. Actinomycetes phylogenetic trees showed that samples of KA and RA isolates had a bootstrap value of 99% with *Streptomyces* sp. BD99 from Pakistan. It showed in the species forming its own sub cluster. Eubacterial phylogenetic trees showed that samples of KE isolates were in one sub cluster with *Bacillus* subsp species CESi5 subtilis from Japan which have been supported with 14% bootstrap value. Meanwhile, eubacteria samples of RE isolates were in the sub cluster with *Bacillus* sp. 2bFR from Manado Indonesia which have been supported with 92% bootstrap value. Eubacterial phylogenetic trees showed that eubacteria samples from ponds isolate KE and eubacteria from swamp isolates RE formed different branches. The isolates KE and RE had different bacterial characteristics. The pond fish is more dominated by protein sources which comes from the remaining food, feces and some organic material carried during water intake. The swamps are dominated by cellulose sources. The remaining dead plants could be a source of cellulose in swamps, therefore the swamp is more dominated by cellulolytic bacteria.

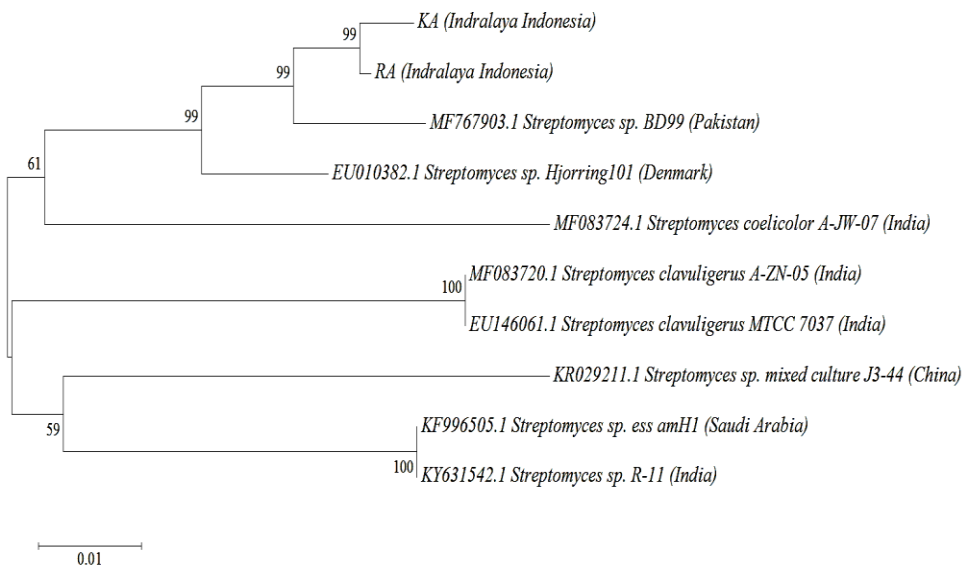


Figure 2. The phylogenetic tree of actinomycetes isolates

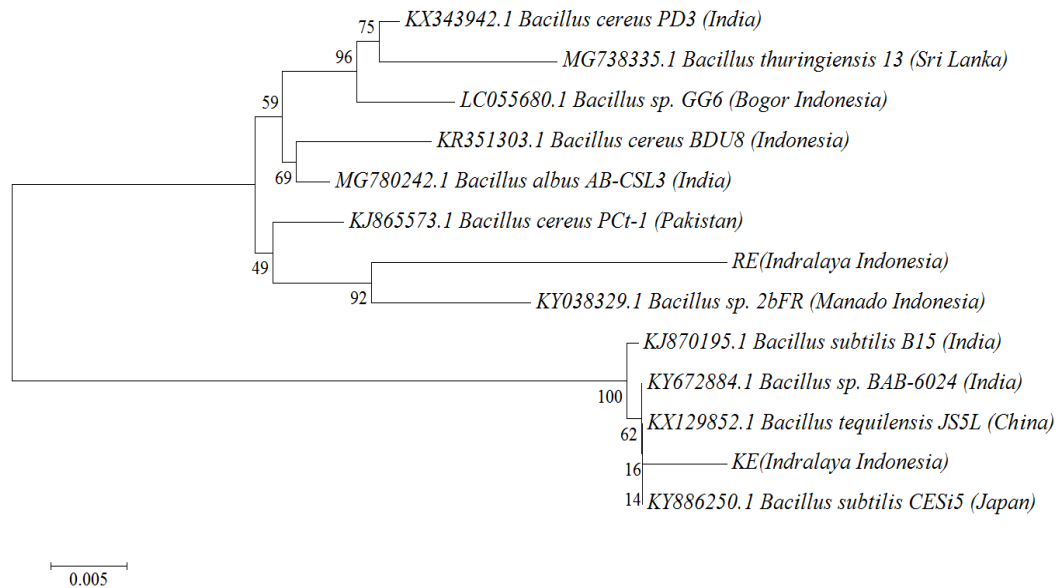


Figure 3. The phylogenetic tree of eubacteria isolates

Bacillus is one type of bacteria that is widely used as a probiotic in aquaculture because of its ability to produce enzymes and antimicrobial components that can inhibit pathogenic bacteria [20]. *Bacillus* species are very suitable for use because they do not produce toxins, are easy to grow, do not require expensive substrates, *Bacillus* has the ability to withstand high temperatures, and the absence of metabolic byproducts [21]. Administration of *Bacillus* sp. with the right concentration and dose can increase the number of red blood cells and blood hemoglobin levels, this is believed to be one indicator of increasing the ability of fish in supplying nutrients to the entire body and tissue repair, so as to increase the growth of fish [22]. In addition, an increase in growth is also thought to be due to a decrease in the stress level of fish on water quality factors. So that the energy from the feed that enters the body of the fish is largely directed to growth. The probiotic *Bacillus* ND2 has the ability to stimulate better fish growth and accelerate the process of digestion of food into energy. The *Bacillus* ND2 could be anti-bacterial, also have the ability as quorum quenching which can block the signal of *A. hydrophila* when it reaches the quorum. In addition, *Bacillus* ND2 has the ability as an immunostimulant and can increase feed digestibility because it has lipolytic, proteolytic and amylolytic enzymes [23]. *Bacillus* bacteria can improve water quality, one of which reduces the content of ammonia (NH₃) and Nitrite (NO₂) [24]

Streptomyces is a genus of Actinomycetes class that has been proven to produce various antibiotics. More than 90 percent of the antibiotics produced from *Streptomyces* are used for the treatment of infectious diseases caused by bacteria [25]. This genera are known as a producer of various biologically active compounds, such as antibacterial, antifungal, antitumor, anticancer, antiparasitic, antiviral, immunomodulators, probiotic application in rearing water for sustainable aquaculture [7, 26, 27]. The administration of commercial probiotics containing *Streptomyces* sp. in feed increases the growth of red tilapia (*Oreochromis* sp.) [28]. Some *Streptomyces* strains alone or combined with other genera, primarily *Bacillus*, exert a probiotic effect on shrimps by improving growth parameters, regulating immune response, modulating host and water microbiota, and increasing resistance to disease [3]. Both of genera *Streptomyces* and *Bacillus* from swamp sediment could be probiotic for developing swamp aquaculture-swamp fish culture.

The conclusion of this study showed that isolates KA and RA from Indralaya have an identity percentage of 98% with *Streptomyces* sp. BD99 from Pakistan. KE isolate from Indralaya have an identity percentage of 99% with *Bacillus* subsp. CESi5 *subtilis* from Japan and RE isolate had an identity percentage of 93% with *Bacillus* sp.2bFR from Manado. They could be potential candidates of swamp aquaculture probiotic.

Acknowledgment

This research was supported by the Sriwijaya University for an Unggulan Kompetitif research program in 2016-2018. The results will be dedicated for developing swamp aquaculture in Aquaculture Program, Department of Fisheries, Faculty of Agriculture, Sriwijaya University, South Sumatra, Indonesia.

References

1. H. Djusman. *Opportunities to make a change?* (FORESPI, College Laguna Philippines 2016)
2. A. Bisset, C. Burke, P.L.M. Cook, J.P. Bowman. *Environmental Microbiology*, **9**, 1, 46 (2007)
3. R.R. Kusuma, L.Q. Aini, L. Khoirunnisaa, (Seminar Nasional Pembangunan Pertanian 2016)
4. L. Verschuere, G. Rombaut, P. Sorgeloos, W. Verstraete. *Microb. Mol. Bio. Reviews*, **64**, 4, 655 (2000)
5. C. Yulvizar, I. Dewiyanti, C.N. Defira, *Jurnal Teknologi dan Industri Pertanian Indonesia*, **6**,2, 20 (2014)
6. M. G. Bernal, R. M. Marrero, Á. I. Campa-Córdova, J. M. Mazón-Suástegui. *Aquacult Int.* **25**, 2, 927 (2017)
7. S. Hariharan, S. Dharmaraj. *Therapeutic, Probiotic, and Unconventional Foods* (Elsevier, 2018).
8. A. Wulandari, S.P. Prayitno, Sarjito. *J. Aquaculture Management and Tech.* **3**,2,143 (2014)
9. Sarjito. *Curr. Res. Bacteriol*, **2**,1, 14 (2009).
10. M. Zubair, F. Fatima, S. Begum, Z.H. Siddiqui, In: S. Trivedi, H. Rehman, S. Saggu, C. Panneerselvam, S. Ghosh (eds) *DNA Barcoding and Molecular Phylogeny*. (Springer, Cham, 2018).
11. W.A. Setyati, Subagiyo. *Jurnal Ilmu Kelautan*, **17**, 3, 164 (2012).
12. S. Kurniawati, K.H. Mutaqin, dan Giyanto. *J. HPT Tropika*, **15**,2, 170 (2015)
13. Nurhayati, B.S.L. Jenie, H.D. Kusumaningrum, S. Widowati, *JID*, **12**,2, 210 (2011)
14. Faturrahman, *J. Biol. Tropi*, **6**, 2, 57(2005)
15. I. Riyantini, M.Yuniar, M.U.K. Agung, *Jurnal Akuatik*, **5**,1, 63 (2014)
16. M. Aris, Sukenda, E.Harris, M.F. Sukadi, M. Yuhana, *JBP*, **1**,3, 43 (2013)
17. J.M. Janda, S.L. Abbott, *Journal Of Clinical Microbiology*, **45**, 9, 2761(2007)
18. N. Saitou, M. Nei, *Molecular Biology and Evolution*, **4**,406 (1987)
19. J. Felsenstein, *J. Evolution*, **39**,783 (1985)
20. H.A. Hong, L.H. Duc, S.M. Cutting, *FEMS Microbiology Reviews*, **29**, 813 (2005)
21. E. Susanti, *Biodiversitas*, **4**,1, 12 (2003)
22. M. Rajikkannu, N. Natarajan, P. Santhanam, B. Deivasigamani, J. Ilamathi, S. Janani, *IJFAS*, **2**, 5, 105 (2015)
23. A.M. Lusiastuti, M.F. Ulkhaq, Widanarni, T.H. Prihadi, *Jurnal Riset Akuakultur*, **11**, 2, 171 (2016).
24. K.H. Linggarjati, A. Djunaedi, Subagiyo, *Journal of Marine Research*, **2**,1, 1(2013).
25. T. Rahayu, *Prosiding Seminar Nasional Biologi*, **8**,1, 456 (2011)
26. S.P. Salamoni, M.B. Mann, F.S. Campos, A.C. Franco, J.C. Germani, S.T.V.D. Sand, *World J Microbiol Biotechnol*, **26**, 1847 (2010)
27. M.A.O. Dawood , S. Koshio, M.M. Abdel-Daim, H.V. Doan, *Reviews in Aquaculture*, **12**, 1 (2018)
28. N. A'isah, T.Y. Mardiana, *PENA Akuatika*, **13**,1, 14 (2016)

Bukti konfirmasi artikel published online (29 November 2018)

The screenshot shows a Gmail interface with the following details:

- Search:** sricoenv
- Subject:** Proceeding of Sricoenv 2018
- From:** sricoenv unsri -sricoenv@pps.unsri.ac.id
- To:** kepada Chairil, Hasan, Masagus, Wartono, Riswandi, Merynda, Ahmad, Dade, Dwi, saya, Andriani
- Date:** Kam, 29 Nov 2018, 04:50
- Language:** Inggris (Indonesia)
- Content:**

Dear : authors

I am pleased to inform you that the proceedings of 1st Sriwijaya International Conference on Environmental Issues (1st **SRICOENV**) was available online at www.e3s-conferences.org. We hope you will completely satisfied with the publication. Thank you for joining us and see you at 2nd **Sricoenv**.

Best Regards
Hermansyah
- Reply Buttons:** Thanks a lot., Thank you for your information., Thank you for your mail.
- System Tray:** 26°C Cerah, Search, serdos dan sk 3c lektor, 8:30 11/06/2023

DNA Barcoding of Swamp Sediment Bacterial Isolates for Swamp Aquaculture Probiotic

Marini Wijayanti ^{1*}, Dade Jubaedah ¹, Januar Ahlan Suhada ¹, Siti Yuliani ¹, Nabilah Saraswati ¹, Tanbiyaskur ¹, Mochamad Syaifudin¹, and Hary Widjajanti²

¹Aquaculture Study Program, Department of Fisheries, Faculty of Agriculture, Universitas Sriwijaya, Ogan Ilir, South Sumatera, Indonesia

²Department of Biology, Faculty of Mathematics & Natural Sciences, Universitas Sriwijaya, Ogan Ilir, South Sumatera, Indonesia

Abstract. Bacteria derived from swamp sediments and aquaculture ponds potential to be probiotics. The study aims to determine the sequence of 16S r RNA gene of isolate of probiotics candidate bacteria from sediment of swamp, to determine the phylogenetic tree between the bacterial species from isolates and Gene Bank data central for their potential as probiotic. The samples of bacteria resulted from pure isolation selected from the sediment of pond cultivation and swamp waters at Lebung Karang Reservation, Ogan Ilir Regency, Indralaya, South Sumatra. This study was started from cultivating bacteria, extracting DNA of bacteria, amplification 16S r RNA genes by PCR, running electrophoresis, and sequencing the amplicon for determining DNA barcodes of bacteria from sediment of swamp and rearing pond. The result of BLAST analysis showed that KA isolate had the highest similarity 97% with *Streptomyces sp.* Hjorring101 from Denmark and RA isolate had the highest similarity 98% with *Streptomyces sp.* BD99 from Pakistan. KE isolate had the highest similarity 99% with *Bacillus subtilis* CESi5 from Japan and RE isolate had the highest similarity 93% with *Bacillus sp.*2bFR from Manado. All of isolates were bacteria potentially as swamp aquaculture probiotics.

1 Introduction

The swamp aquaculture had been developing at South Sumatra, Indonesia. Swamp land can be optimized based on its water level. The swamp land can be cultivated using rotation model of agriculture and aquaculture-fish farming (catfish, snake head fish, tilapia) in deep swamp land [1]. The aquaculture have unique characteristic of their system. The absorption pond make them depend on around water quality of environment. Swamp aquaculture have been one of problem solution for optimizing sub optimal low land system in order to increase welfare society by swamp fish production. The problems of swamp aquaculture are water quality and feed conversion ratio of swamp fish as like as *Channa* fish culture problems. The problem can be approached by specific swamp probiotic for increasing water quality and feed efficiency of swamp fish aquaculture.

Sediments contain abundant populations of microorganisms with high diversity [2]. Swamp sediments contain organic waste that settles at the bottom of the waters. Bacteria

Corresponding author: mariniwijayanti@fp.unsri.ac.id

can grow in swamp sediments due to the presence of organic waste. Organic matter is an energy source for soil flora and fauna [3]. Bacteria from aquaculture ponds due to organic waste, some of which come from the excretion of aquatic organisms, food waste and carcasses of organisms that settle at the bottom of the pond. Bacteria derived from swamp sediments and aquaculture ponds can be used as probiotic candidates.

Probiotics are living microbial agents that are able to provide benefits to the host by improving nutritional value and utilization of feed, increasing host response to disease and improving environmental quality [4]. Probiotics will be more effective when using indigenous (native) microorganisms which obtained from the digestive tract and the environment that are the same or similar to host animals [5]. *Streptomyces* strains as well as their combination with *Bacillus* and the multistrain Bac-Strep are the most favorable probiotic candidates to be used in aquaculture because they exert a probiotic effect on shrimps by improving growth parameters, regulating immune response, modulating host and water microbiota, and increasing resistance to disease [6]. *Streptomyces* has potential as a candidate for probiotics and as well as an alternative to antibiotics in maintaining a sustainable aquaculture [7].

Common bacterial identification is carried out based on morphological, physiological, and biochemical observations [8]. Characterization of bacteria based on the appearance of morphology, physiology, and biochemical testing results are less stable, less uniform and strongly influenced by subjective judgments. This results in the number of strains of bacteria obtained are usually very small compared to the actual diversity of bacteria [9]. To ascertain the species of bacteria that are thought to be potential candidates for probiotics, there is a need for genetic identification that shows the results of specific identification. For this reason, it is necessary to know the molecular characteristics of probiotic bacteria using 16S rRNA gene sequencing. The isolation of bacterial strains that have the potential as probiotics, followed by molecular testing using 16S rRNA to ascertain the species.

DNA barcoding using 16S rRNA gene has been widely used in knowing the molecular DNA characterization of bacteria. The development of bacterial DNA barcoding with error-independent and time-saving technique has increased dramatically, which helps in identifying the microbes and understanding the microbial biodiversity [10]. In the development of swamp fish culture identification of swamp bacteria using 16S rRNA gene needed to obtain the characterization of swamp bacteria that would later be expected to be potential bacteria as probiotics and determine the structure of phylogenetic trees that have been recorded in Gen Bank. The purpose of this study were to know the feasibility of bacterial isolates that have the potential as probiotics from swamp sediments and catfish culture ponds based on their proximity to the probiotic genus by phylogenetic tree approach.

2 Materials and Methods

The bacteria tested came from the location of the cultivation pond and common swamp sediments in the Reservoir Lebung Karang, Ogan Ilir Regency, Indralaya, and South Sumatra. Four bacterial colonies tested were two eubacterial colonies and two actinomycetes colonies. Eubacteria colonies implanted in new petri dishes containing NA (Nutrient Agar) media by scraping 4 quadrants to get a single colony. Petri dishes were wrapped in wrapping paper and incubated for 2 days at room temperature (28°C-30°C) and then observed until the bacteria grew [11]. Actinomycetes colonies implanted in a new petri dish containing the agar medium for YM (Yeast Malt Agar) by scraping 4 quadrants to get a single colony. The cultures were stored at 28-30°C for 5 days [12].

The bacterial DNA extraction process was carried out using Presto™ Mini gDNA Bacteria Kit (Geneaid Biotech Ltd.). The sample required 1×10^9 bacterial cell for one extraction. DNA extraction procedures were carried out in accordance with the Presto™ Mini DNA Bacteria Kit manual. PCR material was used by 25 μ l of DNA extraction. Each reaction contains: go taq green 12.5 μ l, 2 pairs of primers 16S rRNA namely primer 63f 1 μ l, primer 1387r 1 μ l, NFW (Nuclease Free Water) 6.5 μ l, template DNA 4 μ l. DNA amplification was carried out by stages: initiation cycle at 95°C for 5 minutes, denaturation at 94°C for 30 seconds, primary annealing or sticking at 50°C for 1 minute, extension or elongation at 72°C for 2 minutes in 30 cycles and the final extension at 72°C for 5 minutes [13]. PCR products were electrophoresed through 1% agarose electrophoresis gel. Loading dye as much as 1 μ L was mixed with 6 μ L of DNA inserted in each electrophoresis well. Electrophoresis was carried out with 75V power for 50 minutes and the results were soaked into 1X TAE which had been added with diamond nucleic acid dye for 30 minutes, then visualized with Gel Doc. DNA size of Gel Doc results was defined by using marker 1 kb. The amplicons that have been known for DNA size using electrophoresis, were sequenced through the Macrogen, Korea via PT Indolab, Jakarta.

The sequences that have been obtained in the form of fasta format are then aligned using MEGA 6.0 software, then the aligned sequence is taken and then BLAST (Basic Local Alignment Search Tool) is used to determine the homology of a DNA sequence or amino acid with the data contained in Genbank NCBI (National Center for Biotechnology Information) and Barcode of Life. Then all sequences were aligned to analyze genetic distance and phylogenetic trees. Phylogenetic trees between bacterial species were constructed using the Maximum Likelihood method.

3 Results and Discussions

The isolates of bacteria were 4 pure isolates consisting of 2 eubacteria isolates and 2 actinomycetes isolates, each bacteria derived from sediments of swamp waters and aquaculture ponds. The number of isolates used for cultivation and propagation of isolates is presented in Table 1.

Table 1. Bacterial isolates used in cultivation and multiplication of bacterial isolates

No.	Sample Code	Isolates	Media	Origin of Sediment
1.	KA	Actinomycetes	YM (<i>Yeast Malt Agar</i>)	Swamp Fish Pond
	RA	Actinomycetes	YM (<i>Yeast Malt Agar</i>)	Swamp water
2.	KE	Eubacteria	NA (<i>Nutrient Agar</i>)	Swamp Fish Pond
	RE	Eubacteria	NA (<i>Nutrient Agar</i>)	Swamp water

Amplification of bacterial DNA using PCR method with 16S rRNA 63F universal primer and 1387R as well as 4 μ L template from DNA from eubacteria and actinomycetes extraction. DNA visualization is presented in Figure 1. Based on Figure 1 visualization of the results of 16S rRNA amplification on actinomycetes and eubacteria measuring 1342 bp. Marchesi *et al.* (1998) arranged primers 63F and 1387R to amplify the 16S rRNA gene from Domain bacteria. This primary pair is able to amplify the gene with a size of about 1300 base pairs. Bacterial amplification using 63F and 1387R primers produced an average 16S rRNA gene fragment size of \pm 1350 bp [14].

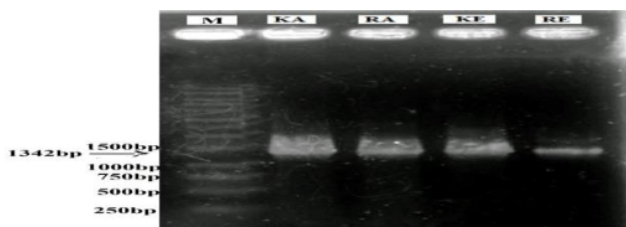


Fig. 1. Visualization of the results of bacterial 16S rRNA gene amplification M= DNA Marker 1 kb; 1= 16s rRNA gene of isolate KA; 2= 16s rRNA gene of isolate RA; 3= 16s rRNA gene of isolate KE;4= 16s rRNA gene of isolate RE

The visualization process is one of the ways to determine the quality of DNA isolates and ensure the suitability of the primers used by looking at the base pair length (bp) [15]. The success of PCR techniques is based more on primary suitability and efficiency and optimization of the PCR process. Non-specific primers can cause amplification of other areas in the genome that are not targeted or otherwise there is no amplified genome area. PCR optimization is also needed to produce the desired character. This optimization concerns the temperature of DNA annealing in PCR machines [16].

The sequencing results that have been obtained are then aligned using the Mega 6.0 software. After aligning it produces a sequence of nucleotide bases with a length of 1324 bp (Isolate KA), 1328 bp (Isolate RA), 1324 bp (Isolate KE), and 1342 bp (Isolate RE). Furthermore, isolates were analyzed through BLASTn (Basic Local Alignment Search Tool-nucleotide) on the NCBI (National Center for Biotechnology Information) site showing the results of the percentage similarities in eubacteria and actinomycetes samples with the data contained in Genbank are presented in Table 2. Based on Table 2, the results of BLAST analysis of the 16S rRNA gene nucleotide sequences of actinomycetes samples from KA isolates had the highest identity percentage of 97% with *Streptomyces* sp. Hjørring101 from Denmark. Whereas actinomycetes from RA isolates had the highest percentage of identity 98% with *Streptomyces* sp. BD99 from Pakistan.

In eubacteria the isolate KE has the highest percentage of identity 99% with the *Bacillus tequilensis* JS5L species from China, *Bacillus* sp. BAB-6024 originating from India and *Bacillus* subsp species. CESi5 subtiles originating from Japan. Eubacteria isolate RE has the highest percentage of identity 93% with *Bacillus albus* AB-CSL3 species originating from India, *Bacillus cereus* PCT-1 species originating from Pakistan, *Bacillus cereus* PD3 species originating from India, *Bacillus cereus* BDU8 species originating from Indonesia, *Bacillus* sp.2bFR species originating from Manado, Indonesia, *Bacillus* sp. G6 species from Bogor, Indonesia and *Bacillus thuringiensis* 13 species from Sri Lanka. If homology has a percentage close to 100% or above 97% it can be confirmed as a related species but vice versa if the homology is smaller than 97% the possibility of isolates is a new species or species cannot be confirmed [17].

Table 2. Results of BLASTn analysis of eubacteria and actinomycetes samples with data in Genbank

Bacterial Species	Identity (%)	Accession number	Origin of Samples
Actinomycetes (Isolate KA)			
<i>Streptomyces</i> sp. Hjørring101	97	EU010382.1	Denmark
<i>Streptomyces coelicolor</i> A-JW-07	93	MF083724.1	India

<i>Streptomyces clavuligerus</i> MTCC 7037	93	EU146061.1	India
<i>Streptomyces clavuligerus</i> A-ZN-05	93	MF083720.1	India
Actinomycetes (Isolate RA)			
<i>Streptomyces sp.</i> BD99	98	MF767903.1	Pakistan
<i>Streptomyces sp.</i> ess amH1	88	KF996505.1	Saudi Arabia
<i>Streptomyces sp. mixed culture</i> J3-44	88	KR029211.1	China
<i>Streptomyces sp.</i> R11	88	KY631542.1	India
Eubacteria (Isolate KE)			
<i>Bacillus subtilis</i> B15	99	KJ870195.1	India
<i>Bacillus tequilensis</i> JS5L	99	KX129852.1	China
<i>Bacillus sp.</i> BAB-6024	99	KY672884.1	India
<i>Bacillus subsp. Subtilis</i> CESi5	99	KY886250.1	Japan
Eubacteria (Isolate RE)			
<i>Bacillus albus</i> AB-CSL3	93	MG780242.1	India
<i>Bacillus cereus</i> PCt-1	93	KJ865573.1	Pakistan
<i>Bacillus cereus</i> PD3	93	KX343942.1	India
<i>Bacillus cereus</i> BDU8	93	KR351303.1	Indonesia
<i>Bacillus sp.</i> 2bFR	93	KY038329.1	Manado, Indonesia
<i>Bacillus sp.</i> GG6	93	LC055680.1	Bogor, Indonesia
<i>Bacillus thuringiensis</i> 13	93	MG738335.1	Sri Lanka

Phylogenetic trees were constructed through the Mega 6.0 software application using the Neighbor-Joining (NJ) method [18] Maximum Composite Likelihood and Substitutions models to include d: Transitions + Transversions with 1000x bootstrap [19]. Eubacteria and actinomycetes phylogenetic trees are presented in Figure 2 and Figure 3. Two phylogenetic tree constructs were formed from 4 sequences obtained from the results of the study with 2 isolates namely actinomycetes KA and RA isolates, whereas eubacteria with isolates KE and RE isolates. Added 8 sequences for actinomycetes and 11 sequences for eubacteria derived from Genbank with accession numbers presented in Table 2.

The results of phylogenetic tree construction showed that the two samples formed different branches, the actinomycetes tree with a 0.01 scale and the eubacteria tree with a scale of 0.005. Actinomycetes phylogenetic trees showed that samples of KA and RA isolates had a bootstrap value of 99% with *Streptomyces sp.* BD99 from Pakistan. It showed in the species forming its own sub cluster. Eubacterial phylogenetic trees showed that samples of KE isolates were in one sub cluster with *Bacillus subsp* species CESi5 subtilis from Japan which have been supported with 14% bootstrap value. Meanwhile, eubacteria samples of RE isolates were in the sub cluster with *Bacillus sp.* 2bFR from Manado Indonesia which have been supported with 92% bootstrap value. Eubacterial phylogenetic trees showed that eubacteria samples from ponds isolate KE and eubacteria from swamp isolates RE formed different branches. The isolates KE and RE had different bacterial characteristics. The pond fish is more dominated by protein sources which comes from the remaining food, feces and some organic material carried during water intake. The swamps are dominated by cellulose sources. The remaining dead plants could be a source of cellulose in swamps, therefore the swamp is more dominated by cellulolytic bacteria.

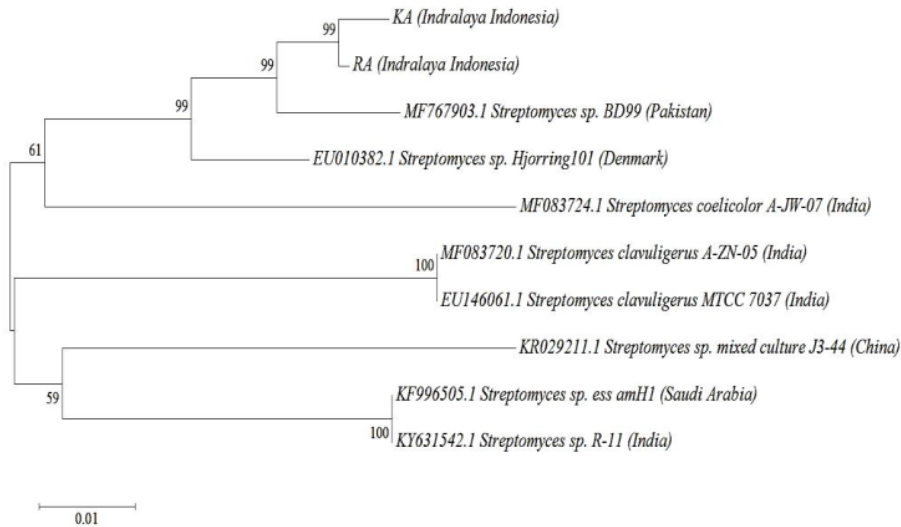


Fig. 2. The phylogenetic tree of actinomycetes isolates

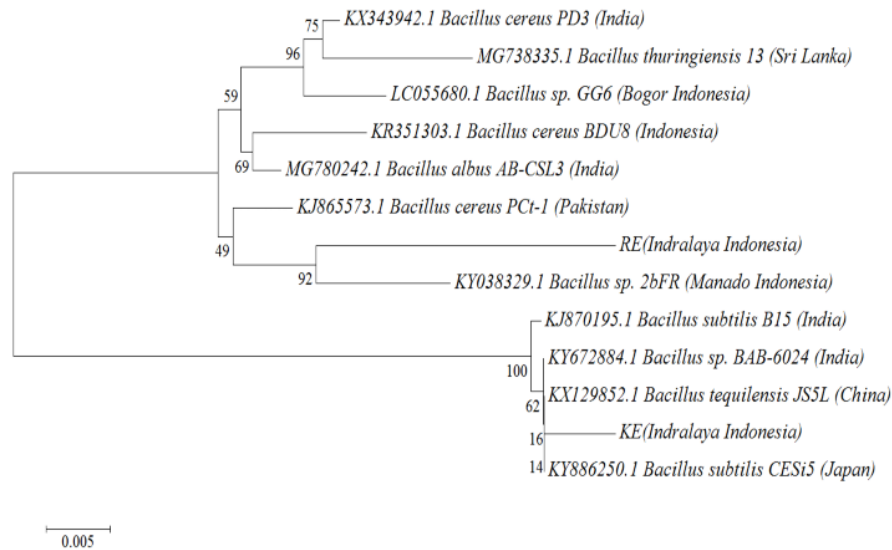


Fig. 3. The phylogenetic tree of eubacteria isolates

Bacillus is one type of bacteria that is widely used as a probiotic in aquaculture because of its ability to produce enzymes and antimicrobial components that can inhibit pathogenic bacteria [20]. *Bacillus* species are very suitable for use because they do not produce toxins, are easy to grow, do not require expensive substrates, *Bacillus* has the ability to withstand high temperatures, and the absence of metabolic byproducts [21]. Administration of *Bacillus* sp. with the right concentration and dose can increase the number of red blood cells and blood hemoglobin levels, this is believed to be one indicator of increasing the

ability of fish in supplying nutrients to the entire body and tissue repair, so as to increase the growth of fish [22]. In addition, an increase in growth is also thought to be due to a decrease in the stress level of fish on water quality factors. So that the energy from the feed that enters the body of the fish is largely directed to growth. The probiotic *Bacillus* ND2 has the ability to stimulate better fish growth and accelerate the process of digestion of food into energy. The *Bacillus* ND2 could be anti-bacterial, also have the ability as quorum quenching which can block the signal of *A. hydrophila* when it reaches the quorum. In addition, *Bacillus* ND2 has the ability as an immunostimulant and can increase feed digestibility because it has lipolytic, proteolytic and amylolytic enzymes [23]. *Bacillus* bacteria can improve water quality, one of which reduces the content of ammonia (NH₃) and Nitrite (NO₂) [24]

Streptomyces is a genus of Actinomycetes class that has been proven to produce various antibiotics. More than 90 percent of the antibiotics produced from *Streptomyces* are used for the treatment of infectious diseases caused by bacteria [25]. This genera are known as a producer of various biologically active compounds, such as antibacterial, antifungal, antitumor, anticancer, antiparasitic, antiviral, immunomodulators, probiotic application in rearing water for sustainable aquaculture [7, 26, 27]. The administration of commercial probiotics containing *Streptomyces* sp. in feed increases the growth of red tilapia (*Oreochromis* sp.) [28]. Some *Streptomyces* strains alone or combined with other genera, primarily *Bacillus*, exert a probiotic effect on shrimps by improving growth parameters, regulating immune response, modulating host and water microbiota, and increasing resistance to disease [3]. Both of genera *Streptomyces* and *Bacillus* from swamp sediment could be probiotic for developing swamp aquaculture-swamp fish culture.

4 Conclusions

The conclusion of this study showed that isolates KA and RA from Indralaya have an identity percentage of 98% with *Streptomyces* sp. BD99 from Pakistan. KE isolate from Indralaya have an identity percentage of 99% with *Bacillus* subsp. CESi5 *subtilis* from Japan and RE isolate had an identity percentage of 93% with *Bacillus* sp.2bFR from Manado. They could be potential candidates of swamp aquaculture probiotic.

Acknowledgments

This research was supported by the Sriwijaya University for an Unggulan Kompetitif research program in 2016-2018. The results will be dedicated for developing swamp aquaculture in Aquaculture Program, Department of Fisheries, Faculty of Agriculture, Sriwijaya University, South Sumatra, Indonesia.

References

1. H. Djusman. *Opportunities to make a change* (FORESPI, College Laguna Philippines, 2016)
2. A. Bisset, C. Burke, P.L.M. Cook, J.P. Bowman. *Environmental Microbiology* **9**, 1 (2007)
3. R.R. Kusuma, L.Q. Aini, L. Khoirunnisaa, (Seminar Nasional Pembangunan Pertanian 2016)

4. L. Verschuere, G. Rombaut, P. Sorgeloos, W. Verstraete. *Microb. Mol. Bio. Reviews*, **64**, 4 (2000)
5. C. Yulvizar, I. Dewiyanti, C.N. Defira, *Jurnal Teknologi dan Industri Pertanian Indonesia* **6**, 2 (2014)
6. M. G. Bernal, R. M. Marrero, Á. I. Campa-Córdova, J. M. Mazón-Suástegui. *Aquacult Int* **25**, 2 (2017)
7. S. Hariharan, S. Dharmaraj. *Therapeutic, Probiotic, and Unconventional Foods* (Elsevier, 2018).
8. A. Wulandari, S.P. Prayitno, Sarjito. *J. Aquaculture Management and Tech* **3**, 2 (2014)
9. Sarjito. *Curr. Res. J. Bacteriol*, **2**, 1 (2009).
10. M. Zubair, F. Fatima, S. Begum, Z.H. Siddiqui, In: S. Trivedi, H. Rehman, S. Saggu, C. Panneerselvam, S. Ghosh (eds) *DNA Barcoding and Molecular Phylogeny*. (Springer, Cham, 2018).
11. W.A. Setyati, Subagiyo. *Jurnal Ilmu Kelautan* **17**, 3 (2012).
12. S. Kurniawati, K.H. Mutaqin, dan Giyanto. *J. HPT Tropika* **15**, 2 (2015)
13. Nurhayati, B.S.L. Jenie, H.D. Kusumaningrum, S. Widowati, *JID* **12**, 2 (2011)
14. Faturrahman, *J. Biol. Tropi* **6**, 2 (2005)
15. I. Riyantini, M. Yuniar, M.U.K. Agung, *Jurnal Akuatik* **5**, 1 (2014)
16. M. Aris, Sukenda, E. Harris, M.F. Sukadi, M. Yuhana, *JBP* **1**, 3 (2013)
17. J.M. Janda, S.L. Abbott, *Journal Of Clinical Microbiology*, **45**, 9 (2007)
18. N. Saitou, M. Nei, *Molecular Biology and Evolution* **4** (1987)
19. J. Felsenstein, *J. Evolution*, **39**, 783 (1985)
20. H.A. Hong, L.H. Duc, S.M. Cutting, *FEMS Microbiology Reviews* **29**, 813 (2005)
21. E. Susanti, *Biodiversitas* **4**, 1 (2003)
22. M. Rajikkannu, N. Natarajan, P. Santhanam, B. Deivasigamani, J. Ilamathi, S. Janani, *IJFAS* **2**, 5 (2015)
23. A.M. Lusiastuti, M.F. Ulkhaq, Widanarni, T.H. Prihadi, *Jurnal Riset Akuakultur* **11**, 2 (2016).
24. K.H. Linggarjati, A. Djunaedi, Subagiyo, *Journal of Marine Research* **2**, 1 (2013).
25. T. Rahayu, *Prosiding Seminar Nasional Biologi* **8**, 1 (2011)
26. S.P. Salomoni, M.B. Mann, F.S. Campos, A.C. Franco, J.C. Germani, S.T.V.D. Sand, *World J Microbiol Biotechnol* **26**, 1847 (2010)
27. M.A.O. Dawood, S. Koshio, M.M. Abdel-Daim, H.V. Doan, *Reviews in Aquaculture* **12**, 1 (2018)
28. N. A'isah, T.Y. Mardiana, *PENA Akuatika* **13**, 1 (2016)

