



Rozirwan unsri <rozirwan@unsri.ac.id>

New manuscript received by Editorial Office (JEENG-05361-2024-01)

1 pesan

Journal of Ecological Engineering <kontakt@editorialsystem.com>

20 Februari 2024 pukul 11.54

Balas Ke: "gabriel@borowski.net.pl" <gabriel@borowski.net.pl>

Kepada: Rozirwan Rozirwan <rozirwan@unsri.ac.id>

Dear Dr. Rozirwan,

Thank you for your manuscript: Bioaccumulation and ecological risk assessment of heavy metal contamination (Pb and Cu) build up in the roots of *Avicennia alba* and *Excoecaria agallocha*.
The following number has been assigned to it: JEENG-05361-2024-01.

The manuscript will be checked by Editors and then sent to the Reviewers.
You will be informed by email about any further decisions on this article.

Thank you for submitting your work to our journal.

Kindest regards,
Prof. Gabriel Borowski
Editor-in-Chief
Journal of Ecological Engineering

Editorial System is available here: <https://www.editorialsystem.com/jeeng/>



Rozirwan unsri <rozirwan@unsri.ac.id>

Decision on manuscript JEENG-05361-2024-01

1 pesan

Journal of Ecological Engineering <kontakt@editorialsystem.com>

5 Maret 2024 pukul 14.34

Balas Ke: "gabriel@borowski.net.pl" <gabriel@borowski.net.pl>

Kepada: Rozirwan Rozirwan <rozirwan@unsri.ac.id>

March 05, 2024

JEENG-05361-2024-01

Bioaccumulation and ecological risk assessment of heavy metal contamination (Pb and Cu) build up in the roots of *Avicennia alba* and *Excoecaria agallocha*

Dear Dr. Rozirwan,

I am pleased to inform you that your manuscript, entitled: Bioaccumulation and ecological risk assessment of heavy metal contamination (Pb and Cu) build up in the roots of *Avicennia alba* and *Excoecaria agallocha*, might be accepted for publication in our journal, pending some minor changes suggested by reviewers (see below).

Please revise your paper strictly according to the attached Reviewers comments. Your manuscript won't be taken into consideration without the revisions made according to the recommendations.

Authors of our journal are requested to prepare a revised version of their manuscript as soon as possible. This may ensure fast publication if an article is finally accepted.

1. Decimals in Tables should be separated by dot, not comma.
2. Please check carefully if all References and citations are strictly this same within the text. For example:
 - Citation by (Anzecc And Armcanz, 2000) was not specified in References.
 - Reference (Ağca, N., & Özdel, E. 2014) was not cited in the text.

Kindest regards,

Prof. Gabriel Borowski

Editor-in-Chief

Journal of Ecological Engineering



Rozirwan unsri <rozirwan@unsri.ac.id>

New revision received by Editorial Office (JEENG-05361-2024-02)

1 pesan

Journal of Ecological Engineering <kontakt@editorialsystem.com>

5 Maret 2024 pukul 20.28

Balas Ke: "gabriel@borowski.net.pl" <gabriel@borowski.net.pl>

Kepada: Rozirwan Rozirwan <rozirwan@unsri.ac.id>

Dear Dr. Rozirwan,

Thank you for the revision of the manuscript: Bioaccumulation and ecological risk assessment of heavy metal contamination (Pb and Cu) build up in the roots of *Avicennia alba* and *Excoecaria agallocha*.
The following number has been assigned to it: JEENG-05361-2024-02.

The manuscript will be rated once again by the Editors and then sent to the Reviewers.

You will be informed by email about any further decisions on this article.

Kindest regards,
Prof. Gabriel Borowski
Editor-in-Chief
Journal of Ecological Engineering

Editorial System is available here: <https://www.editorialsystem.com/jeeng/>



Rozirwan unsri <rozirwan@unsri.ac.id>

Decision on manuscript JEENG-05361-2024-02

1 pesan

Journal of Ecological Engineering <kontakt@editorialsystem.com>

6 Maret 2024 pukul 13.32

Balas Ke: "gabriel@borowski.net.pl" <gabriel@borowski.net.pl>

Kepada: Rozirwan Rozirwan <rozirwan@unsri.ac.id>

March 06, 2024

JEENG-05361-2024-02

Bioaccumulation and ecological risk assessment of heavy metal contamination (Pb and Cu) build up in the roots of *Avicennia alba* and *Excoecaria agallocha*

Dear Dr. Rozirwan,

I am pleased to inform you that your manuscript has been accepted for publication in our journal.

Just after the payment, the editors will make some correction and prepare a proof of article.

It will be send to you for acceptance before publication. We would like to publish this article in the Vol. 25, Issue 5, 2024.

Thank you for submitting your work to us.

Kindest regards,

Prof. Gabriel Borowski

Editor-in-Chief

Journal of Ecological Engineering



Rozirwan unsri <rozirwan@unsri.ac.id>

Publishing fee has been set (JEENG-05361-2024-02)

1 pesan

Journal of Ecological Engineering <kontakt@editorialsystem.com>

6 Maret 2024 pukul 13.34

Balas Ke: "gabriel@borowski.net.pl" <gabriel@borowski.net.pl>

Kepada: Rozirwan Rozirwan <rozirwan@unsri.ac.id>

Dear Dr. Rozirwan,

Publishing fee for the manuscript: Bioaccumulation and ecological risk assessment of heavy metal contamination (Pb and Cu) build up in the roots of *Avicennia alba* and *Excoecaria agallocha* (JEENG-05361-2024-02) has been set to: 330.00 EUR / 360.00 USD

Please log in to your account:

<https://www.editorialsystem.com/jeeng/article/407100/view/payment/>

to proceed with the payment.

Editorial Office of Journal of Ecological Engineering



Rozirwan unsri <rozirwan@unsri.ac.id>

New payment transaction (P24-C1K-M6B-F8M)

1 pesan

Przelewy24.pl <info@przelewy24.pl>
Balas Ke: "Przelewy24.pl" <info@przelewy24.pl>
Kepada: rozirwan@unsri.ac.id

7 Maret 2024 pukul 09.42



Transaction details

Request date: **2024-03-07 05:41.43** Transaction number: **P24-C1K-M6B-F8M**

Dear Client,

We kindly inform that there has been a new payment transaction in Przelewy24 registered for:
Wydawnictwo Naukowe Gabriel Borowski

You may check the current status of the transaction here: [Check transaction status](#)

If the transaction was not paid and it can still be continued, the relevant option will be displayed once you navigate to the transaction status screen.

Transaction details:

- Transaction amount: 330,00 EUR
- Charges payable by the client: 0,00 EUR
- Description: JEENG-05361-2024-02 Publishing fee

If you need to contact Przelewy24, please refer to the transaction number.

Information on the transaction is sent to the Payee on the following business day, at the latest.

In case of any doubts regarding the transaction, please use this [FORM](#)

Please direct questions regarding the purchased goods or services to the Merchant.

This message has been generated automatically. Please do not reply to this message directly.

Przelewy24 Team



tel. +48 61 642 93 44

fax +48 61 642 90 31

serwis@przelewy24.pl



Przelewy24 merger with Dotpay and eCARD



PayPro S.A. ul. [Pastelowa 8, 60-198 Poznań](#), NIP 779-236-98-87, REGON 301345068,

The District Court Poznań - Nowe Miasto i Wilda, 8th Commercial Division of the National Court Register, KRS entry no.:

0000347935, share capital: 5 476 300 PLN fully paid up



Rozirwan unsri <rozirwan@unsri.ac.id>

Confirmation P24-C1K-M6B-F8M

1 pesan

Przelewy24.pl <info@przelewy24.pl>
Balas Ke: "Przelewy24.pl" <info@przelewy24.pl>
Kepada: rozirwan@unsri.ac.id

7 Maret 2024 pukul 09.44



Payment confirmation

Request date: **2024-03-07** Transaction number: **P24-C1K-M6B-F8M**

Dear Customer,

this message confirms that a payment has been made in Przelewy24 system.

- Payee: Wydawnictwo Naukowe Gabriel Borowski
- Transaction amount: 330,00 EUR
- Fee payable by the client: 0,00 EUR
- Ordering Party: Rozirwan Rozirwan, rozirwan@unsri.ac.id
- Description: JEENG-05361-2024-02 Publishing fee
- Payment method: Payment card

In case of contacting Przelewy24, please refer to the transaction number

This is an automatically generated email, please do not reply to it.

Przelewy24 Team



tel. +48 61 642 93 44
fax +48 61 642 90 31
serwis@przelewy24.pl



Przelewy24 merger with Dotpay and eCARD



PayPro S.A. ul. Pastelowa 8, 60-198 Poznań, NIP 779-236-98-87, REGON 301345068,

The District Court Poznań - Nowe Miasto i Wilda, 8th Commercial Division of the National Court Register, KRS entry no.:

03/04/24, 09.07

Email Sriwijaya University - Confirmation P24-C1K-M6B-F8M

0000347935, share capital: 5 476 300 PLN fully paid up



Rozirwan unsri <rozirwan@unsri.ac.id>

Publishing fee has been received

1 pesan

Journal of Ecological Engineering <kontakt@editorialsystem.com>
Balas Ke: "gabriel@borowski.net.pl" <gabriel@borowski.net.pl>
Kepada: Rozirwan Rozirwan <rozirwan@unsri.ac.id>

7 Maret 2024 pukul 09.44

Dear Dr. Rozirwan,

We would like to inform you that the publishing fee for the manuscript: Bioaccumulation and ecological risk assessment of heavy metal contamination (Pb and Cu) build up in the roots of *Avicennia alba* and *Excoecaria agallocha* (JEENG-05361-2024-02) has been received.

Thank you for your payment!

Editorial Office of Journal of Ecological Engineering



Rozirwan unsri <rozirwan@unsri.ac.id>

JEE 25(5), 2024

1 pesan

JEE <office@jeeng.net>
Kepada: rozirwan@unsri.ac.id

2 April 2024 pukul 12.30

Dear Author,

I am sending a proof version of the article for publication in the Journal of Ecological Engineering , Vol. 25, Iss. 5, 2024.

Please read the final version of the work, and use the attached PDF file if you need to add your comments.

Please send your acceptance to 5th of April.

Best Regards,

Anna Winiarczyk

Editorial Assistant

Journal of Ecological Engineering (JEE)

www.jeeng.net

 **Rozirwan.pdf**
2612K

Bioaccumulation and Ecological Risk Assessment of Heavy Metal Contamination (Lead and Copper) Build Up in the Roots of *Avicennia alba* and *Excoecaria agallocha*

Nadila Nur Khotimah¹, Rozirwan^{2*}, Wike Ayu Eka Putri², Fauziyah², Riris Aryawati², Isnaini², Redho Yoga Nugroho²

¹ Environmental Management Study Program, Graduate Program, Universitas Sriwijaya, Palembang 30139, Indonesia

² Department of Marine Science, Faculty of Mathematics and Natural Sciences, Universitas Sriwijaya, Indralaya 30862, South Sumatra, Indonesia

* Corresponding author's e-mail: rozirwan@unsri.ac.id

ABSTRACT

Mangrove roots play an important role in reducing heavy metal pollution in their surroundings. This study aimed to assess the bioaccumulation and ecological risk assessment of heavy metal pollution in mangrove roots. Mangrove root samples consisting of two species (*Avicennia alba* and *Excoecaria agallocha*) were collected from two observation stations in the mangrove ecosystem of Payung Island, Banyuasin District, South Sumatra, Indonesia. Heavy metal concentrations were measured by atomic absorption spectrometry. Then, statistical analysis was carried out by one-way analysis of variance (ANOVA). Ecological risk assessment used the bioconcentration factor (BCF), geoaccumulation index (I_{geo}), contamination factor (Cf), and pollution load index (PLI). On the basis of the results, the highest sediment heavy metal concentration at station 2 was Pb amounted to 13.57 ± 0.46 mg/kg, and Cu amounted to 11.08 ± 0.38 mg/kg. In turn, the highest heavy metal concentration of mangrove roots in *E. agallocha* species for Pb amounted to 2.89 ± 0.033 mg/kg and *A. alba* for Cu amounted to 10.57 ± 0.38 , BCF was classified as exclusion ($BCF < 1$), except for the BCF of Cu station 1, which was classified as hyperaccumulator ($BCF > 1$). I_{geo} shows that the level of pollution is not contaminated ($I_{geo} < 0$), and Cf shows low pollution ($Cf < 1$), except Cf Pb station 2 is classified as moderate pollution. Conversely, PLI is included in the category of not polluted ($PLI < 0$). Mangrove roots play an important role in reducing heavy metal pollution in the surrounding area. Therefore, an in-depth understanding of heavy metal dynamics can be the basis for designing effective coastal environmental conservation strategies.

Keywords: bioaccumulation, ecological risk assessment, heavy metal, mangrove roots, sediment.

INTRODUCTION

Heavy metal pollution is a serious matter in mangrove ecosystems. Most heavy metals are naturally occurring, but some are derived from anthropogenic sources (Mitra et al., 2022). In coastal areas where mangrove ecosystems exist, sources of heavy metal contamination can come from industrial activities, domestic waste, mining, and pesticide use (Fitria et al., 2023). Some examples of heavy metals of common concern in the mangrove context are lead (Pb) and copper (Cu)

(Hewindati et al., 2022; Mosa et al., 2022). Sources of Pb from industrial waste, ship fuel, and ship paint tend to persist in the environment and can accumulate in plants as well as animals (Ytreberg et al., 2022; Raj and Das 2023). Furthermore, the use of copper-containing fertilizers and pesticides in agriculture can also contribute to the Cu exposure in coastal environments (Li et al., 2020).

Heavy metals are chemical elements that have a high atomic mass and can be toxic to living organisms when accumulated in high concentrations (Briffa et al., 2020; Nnaji et al., 2023).

Heavy metal toxicity can inhibit plant growth, enzymatic activity, stomatal function, photosynthetic activity, and the accumulation of other nutrients (Guo et al., 2023; Feng et al., 2023). In addition, high concentrations of heavy metals can also cause damage to the root system. Roots, as the main part, have the ability to accumulate heavy metals from the environment and translocate them to other parts of the mangrove (Luthansa et al., 2021a; Yadav et al., 2023). According to Szafranski and Granek (2023), the factors affecting heavy metal bioaccumulation in mangrove roots involve the chemical properties of the metals, the physical and chemical conditions of the environment, as well as the biological characteristics of the mangrove itself. Some types of roots, such as pneumatophores, can allow gas and nutrient exchange but can also contribute to the bioaccumulation process (Robin et al., 2021).

The bioaccumulation of heavy metals in mangrove roots has significant ecological impacts. High bioaccumulation rates can lead to toxicity risks for the mangrove plants themselves and other organisms that depend on the mangrove ecosystem (Chowdhury et al., 2021; Bhuiyan et al., 2022). Other organisms in the mangrove ecosystem that rely on mangrove plants for habitat or food sources may also be exposed to toxicity risks. Animals such as crustaceans, molluscs, and annelids that live around mangrove roots can be affected by the heavy metals that accumulate in the plant tissue (Rozirwan et al., 2023a; Rozirwan et al., 2024). This can affect the abundance, reproduction, and sustainability of organism populations, and increase the risk of buildup in the food chain (Zheng et al., 2023). The organisms that consume mangrove plants, such as invertebrates and fish, can accumulate heavy metals in their tissues (Yousif et al., 2021). Furthermore, higher predatory organisms, such as birds and mammals may be impacted to a greater extent, as they may consume the organisms that have accumulated significant amounts of heavy metals (Zaynab et al., 2022; Rozirwan et al., 2022a; Khan et al., 2023).

Heavy metal contamination can have serious impacts on the balance of coastal ecosystems. Through this study, it is expected to identify the ecological risk level of heavy metal bioaccumulation in mangrove roots, so as to design appropriate mitigation and conservation strategies. The species *A. alba* and *E. agallocha* were chosen because they are among the most dominant

species found at the study site. These two species also have different root systems; studying their roots can provide more in-depth information on heavy metal bioaccumulation. Ecological risk assessments are important to understand the consequences of heavy metal bioaccumulation in mangrove plants. This information will be useful in designing the prevention and management measures that can minimize negative impacts on the coastal environment.

MATERIALS AND METHOD

Roots sampling

This research was conducted in September 2023. Mangrove roots and sediments were collected using a purposive sampling method at two observation stations with a purposive sampling method in the Payung Island mangrove ecosystem, Banyuasin Coast, South Sumatra (Figure 1).

Payung Island is an estuary area that is influenced by freshwater and seawater inputs from both the Musi River and Bangka Strait waters (Rozirwan et al., 2021; Rozirwan et al., 2022b; Meiyerani et al., 2024). Several previous studies have stated that this area is influenced by various activities, such as ship transportation, fishing areas, as well as agricultural and residential activities around Payung Island (Saputra et al., 2021; Rozirwan et al., 2023b). In addition, this area also has a lot of mangrove vegetation. According to Dalimunthe et al. (2023), mangroves on Payung Island consist of various species, such as *Avecennia alba*, *Bruguiera sexangula*, *Bruguiera sexangula*, *Excoecaria agallocha*, *Kandelia candel*, *Nypa fruticans*, and *Rhizophora apiculata*.

Identification of mangrove species is referred to Giesen et al. (2007). Preparations and destruction of sediment samples and mangrove roots were carried out in the Marine Bioecology laboratory at the Faculty of Mathematics and Natural Sciences, Sriwijaya University. Quantitative analysis of heavy metal concentrations was conducted at the Environmental Agency Laboratory, South Sumatra.

Sediment grain size measurement

Sediment grain size analysis has been conducted using sieving and pipetting methods

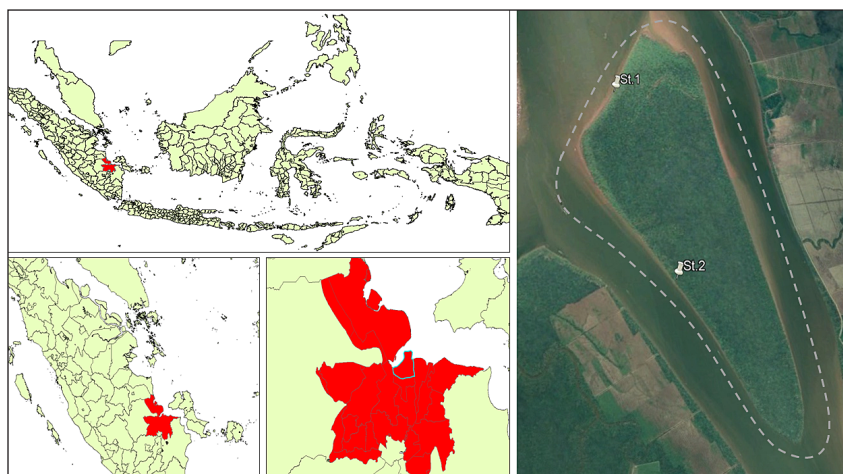


Figure 1. A map of mangrove root sampling locations on Payung Island, Banyuasin District, South Sumatra, Indonesia.

(Romano et al., 2017). Then, to determine the type of sediment substrate (gravel, sand, mud, and clay) using Shepard's triangle analysis with Microsoft Excel V.2021 (Poppe and Eliason, 2008; Anggraini et al., 2020). The determination of sediment fraction type was based on the most significant composition value from the data.

Sample preparation and destruction

Sediment sample preparation has been done by cleaning foreign objects such as plastic pieces, leaves, etc. and then drying them at room temperature, crushing them until homogeneous, and storing them in a polyethylene bottle with a lid. Furthermore, mangrove roots were cleaned and dried using the indirect sunlight method, then pulverized. Destruction of heavy metal samples of Pb and Cu in sediment samples and mangrove roots using wet deconstruction refers to (Rozirwan et al., 2023c; Rozirwan et al., 2024).

Atomic absorption spectroscopic measurement

Measuring the concentration of Pb and Cu was carried out using an atomic absorption spectrophotometer with a wavelength of 283.3 nm for Pb and 324.7 nm for Cu (Zhong et al., 2016).

DATA ANALYSIS

Quality standards and recovery values

Quality standards for Pb and Cu in sediment and plants are presented in Table 1. The recovery values for the heavy metals in the standard reference material are presented in Table 2.

Ecological risk assesment

In the environmental ecological risk assessment, there are calculations of the bioconcentration factor (BCF), geoaccumulation index (I_{geo}), contamination factor (Cf), and pollution load index (PLI) (Hakanson 1980).

Bioconcentration factor

Metal uptake by roots from sediments occurs through a process known as bioaccumulation. The use of BCF values aims to identify the level of metal bioaccumulation in mangrove roots derived from sediment (Maiti et al., 2022).

$$BCF = \frac{\text{Concentration of root}}{\text{Concentration of sediment}} \quad (1)$$

where: $BCF < 1$ is an excluder ; $BCF = 1$ is an indicator; and $BCF > 1$ is a hyperaccumulator (Almahasheer 2019).

Table 1. Quality standards (mg/kg)

Sample	Pb	Cu	References
Sediment	50	65	(ANZECC and ARMCANZ, 2000)
Plant	2	10	WHO (1996) in (Ogundele et al., 2015)

Geoaccumulation index

Geoaccumulation index (I_{geo}) quantitatively assesses the level of heavy metal contamination and assigns pollution levels by detailing their classification (Nagarajan et al., 2019).

$$I_{geo} = \log_2\left(\frac{\text{Concentration heavy metals in sediment}}{1.5 \cdot \text{background}}\right) \quad (2)$$

where: the I_{geo} value classification consists of not contaminated ($I_{geo} \leq 0$), not contaminated to moderately contaminated ($I_{geo} 0-1$), moderately contaminated ($I_{geo} 1-2$), moderate to highly contaminated ($I_{geo} 2-3$), highly contaminated ($I_{geo} 3-4$), highly contaminated to very high ($I_{geo} 4-5$), and highly contaminated ($I_{geo} \geq 5$) (Muller, 1969).

Contamination factor (Cf)

The contamination factor is determined experimentally, as the ratio between the elemental concentration of the sample and its background (Gopal et al., 2023).

$$\frac{\text{Contamination factor (Cf)} = \text{Concentration of heavy metals in sediment}}{\text{Background}} \quad (3)$$

where: contamination factor criteria according to (Shaheen et al., 2017): $Cf < 1$ = low level of contamination; $1 < Cf < 3$ = moderate level of contamination; $3 < Cf < 6$ = moderate level of contamination; $Cf > 6$ = very high level of contamination.

Pollution load index

The pollution load index (PLI) is used to determine the quality of pollution. The pollution load index value uses the formula (Shaheen et al., 2019).

$$PLI = (Cf_1 \times Cf_2 \times Cf_3 \dots \times Cf_n)^{1/n} \quad (4)$$

where: pollution load index criteria: PLI 2 = not polluted to lightly polluted; PLI 2-4 = moderately polluted; PLI 4-6 = heavily polluted; PLI 6-8 = heavily polluted; PLI 8-10 = heavily polluted.

Statistical analysis

The data were tested for homogeneity of variance with the Levene test and for normality of distribution with the Shapiro-Wilk test. Significant differences within each root by pollution

Table 2. Recovery values (Ağca and Özdel, 2014)

Metals	Recovery (%)
Pb	75.8
Cu	92.4

source were assessed by one-way analysis of variance (ANOVA), followed by a post-hoc LSD test if the conditions were met (Carricavur et al., 2018; Rozirwan et al., 2023d). The level of significance was $p < 0.05$. All statistical analyses were performed using the IBM SPSS V.26 application.

RESULT AND DISCUSSION

Description of roots

The *A. alba* and *E. agallocha* mangroves found at the sampling sites are two species that have different characteristics. Differences are also seen in the type of roots owned, as presented in Figure 2. *A. alba* species includes a type of pneumatophore root that emerges vertically from the cord root. In line with the opinion of (Hao et al., 2021), the *Avicennia* genus has developed an advanced root system to increase resistance to muddy soil conditions and has downward-growing anchor roots and upward-growing aerial roots (pneumatophores). Pneumatophores provide a hard base that is often covered by a variety of creatures such as sponges, sea anemones, bryozoans, tunicates, barnacles, tubeworms, and molluscs, as well as various types of algae (Hogarth 2013). In addition, the type of pneumatophore can also facilitate the aeration process, which is important for root respiration (Schauss 2016; Siraj et al., 2023). In turn, *E. agallocha* has lateral roots that spread and mix with each other, supraterranean bands produce elbow-shaped pegs from pneumatophores (Mondal et al., 2016). According to Ragavan et al., (2015), the genus *Excoecaria* has roots that are above the sediment and grow creeping. Plants with lateral roots can enhance nutrient exchange (Zürcher and Müller 2016). Strong roots, which can penetrate deeper into the soil, have the properties that can help bind and store surrounding sediments. This helps prevent erosion and keeps the soil structure strong (Gao et al., 2016; Stachew et al., 2021).



Figure 2. Mangrove roots, A). *A. alba*, B). *E. agallocha*

Sediment grain size

The results of determining the type of substrate in sampling using the Shepard triangle method (Figure 3). The determination of sediment substrate in the Payung Island mangrove ecosystem is divided into four types: gravel, sand, mud, and clay. The results showed that the type of substrate at the two stations was clay. The sediment substrate around the Payung Island mangrove ecosystem is dominated by clay. The percentage of clay from the two stations ranged from 80.5–84.03%. The highest percentage of clay was at station 1 (Table 3). According

to the sediment fraction results, Table 4 shows the characteristics of both mangrove species, *A. alba* and *E. agallocha*. According to Rozirwan et al. (2024), clay substrates are strong at absorbing organic matter, so many groups of macrobenthos animals are found. Mangrove substrate characteristics are often found in mud, loam, and sandy areas (Saputra et al., 2021; Rozirwan et al., 2023). Fine substrate types such as loam make it easy to accumulate heavy metals, because clay particles have a high surface area for the absorption of heavy metals (Song et al., 2014; Rozirwan et al., 2020e). Mangrove forests have a low-energy aquatic environment

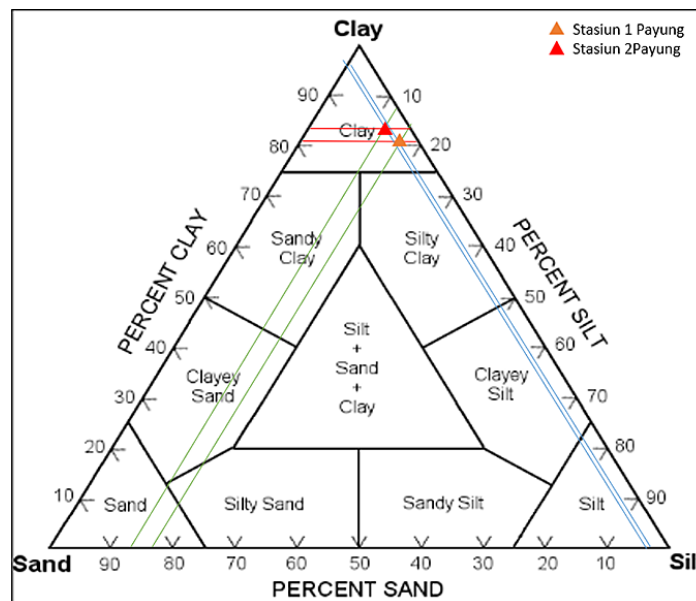


Figure 3. Classifications of sediment type with shepard triangle method

Table 3. Sediment grain size in each station

Station	Sediment fraction (%)				Grain size
	Gravel	Sand	Mud	Clay	
St.1	0.00	3.6	12.37	84.03	Clay
St.2	0.00	3.36	16.14	80.5	Clay

that is conducive to the sedimentation of clay particles (Das et al., 2019). In addition, clay-textured sediments have a higher ability to reject nutrients and are more active in chemical reactions than coarse-textured soils (Ayu et al., 2023; Rozirwan et al., 2023f).

Heavy metals concentration

The results of heavy metal concentrations of Pb and Cu in sediment and mangrove roots at both stations are summarized in Figure 4. According to the study findings, station 2 (*E. agallocha*) had the highest concentration of Pb in sediments

Table 4. Comparison of heavy metals concentration associated with mangrove roots in the world

Location	Species	Heavy metals (mg/kg)	References
The mangrove ecosystem in South Gujarat	<i>Avicennia marina</i>	0.068 ±0.003 (Pb) 0.022 ±0.011 (Cd) 0.048 ±0.010 (Ni) 0.012 ±0.016 (Cr) 0.012 ±0.016 (Cu) 0.490 ±0.028 (Zn) 0.490 ±0.028 (Mn) 5.04 ±1.195 (Fe)	(Ozyurt et al., 2017)
The coastal area of Subang, West Java, Indonesia	<i>Rhizophora apiculata</i> <i>Sonneratia caseoralis</i>	4.272±0.397 (Cu) 0.075±0.017 (Cd) 5.786±0.424 (Pb) 4.340±0.088 (Cu) 0.638±0.150 (Cd) 3.614±0.354 (Pb)	(Hewindati et al., 2022)
River Blanakan in Subang regency, West Java province	<i>Avicennia marina</i> <i>Rhizophora mucronata</i> <i>Sonneratia caseoralis</i>	18.08-54.64 (Zn) 0.33- 0.89 (Cu) 9.75-54.75 (Zn) 0.2-54.75 (Cu) 19.58-33.33 (Zn) 0.4-0.99 (Cu)	(Takarina, 2020)
The Mangrove ecosystem of Payung Island, Banyuasin District, Sout Sumatra	<i>Sonneratia caseolaris</i> <i>Rhizopora apiculata</i> <i>Xylocarpus granatum</i>	2.596±0.002 (Pb) 5.459±0.030 (Cu) 11.881±0.015 (Zn) 1.340±0.075 (Pb) 1.532±0.016 (Cu) 5.428±0.004 (Zn) 0.514±0.129 (Pb) 8.850±0.011(Cu) 3.933±0.010 (Zn)	(Rozirwan et al., 2023f)
The Can Gio Mangrove Forest (Southern Vietnam)	<i>Rhizophora apiculata</i>	0.26 - 11.69 (Cr) 0.21-8.17 (Cu) 0.11 – 8.54 (Ni)	(Nguyen et al., 2020)
The embayments of Sydney estuary (Australia)	<i>Avicennia marina</i>	153 (Cu) 189 (Pb) 378 (Zn) 16 (Ar) 11 (Ni)	(Chaudhuri et al., 2014)
The Sirik mangrove forest is located in an arid environment along the Oman Sea	<i>Avicenna marina</i> <i>Rhizophora macronata</i>	6.09±1.12 (Pb) 6.89±0.74 (Pb)	(Keshavarz et al., 2012)

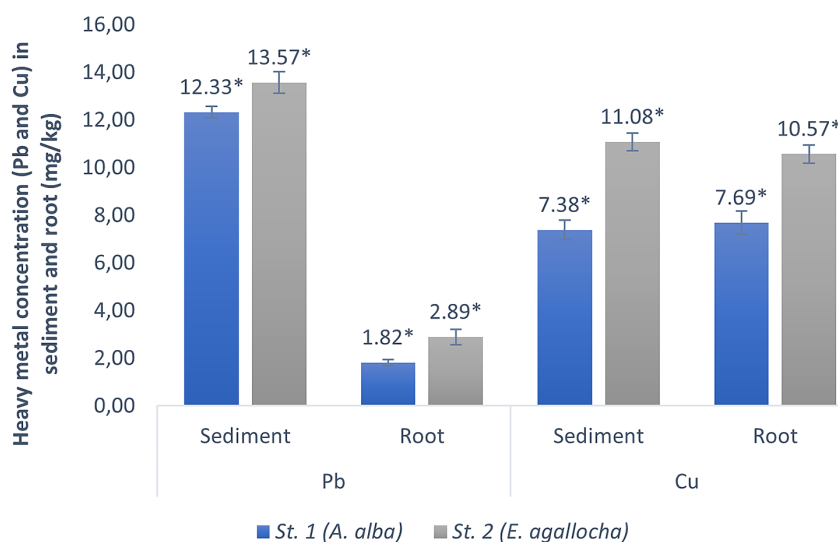


Figure 4. Heavy metal concentration (Pb and Cu) in sediment and mangrove roots (mg/kg)

and roots, at 13.57 ± 0.46 mg/kg and 2.89 ± 0.327 mg/kg, respectively. As for Cu in the sediment, the largest concentration at station 2 (*E. agallocha*) was 11.08 ± 0.38 mg/kg, and for roots at station 1 (*A. alba*) was 7.69 ± 0.48 mg/kg. Differences in each concentration of Pb and Cu at each station were analyzed statistically using one-way anova and post hoc LSD ($P < 0.05$) marked with (*) indicating that each sample is significantly different. Reference comparisons of heavy metal concentrations in roots from different species and locations are summarized in Table 2.

On the basis of Figure 4, the concentration of Pb sediment in this study is still below the quality standard set by ANZECC and ARMCANZ (2000), of 50 mg/kg. Station 1 is an area where *A. alba* species are found, or the coastal front zone is generally directly affected by tides, rather than the back zone of the area where *E. agallocha* species are found. The forefront zone often experiences dynamic movement of water during tides, heavy metals can be bound to sediment particles and transported by water during tides (Harahap et al., 2020; Maulana et al., 2023). The concentration of Pb in sediment is higher than that in roots, indicating that mangrove roots can effectively prevent heavy metals from entering the plant's upper area, but the metal concentration around the root area is still high (Wang et al., 2013).

The concentration of heavy metal Pb in *E. agallocha* roots of 2.89 ± 0.327 mg/kg has exceeded the quality standard set by WHO (1996) in (Ogundele et al., 2015) of 2 mg/kg. Differences in heavy metal concentrations in mangrove roots can also occur due to several factors, such

as differences in species, root types, and habitats (Rezaei et al., 2021; Hossain et al., 2022). *E. agallocha* roots contained higher Pb concentrations than *A. alba*. Mangrove roots are able to release oxygen to avoid the toxic effects of anaerobic sediment conditions (Castro et al., 2022). According to the opinion of Lin et al. (2021), the roots that are submerged in sediments will differ from some types of roots that grow outside the sediment surface. The lateral roots of *E. agallocha* spread along the soil surface and have the highest heavy metal concentrations compared to the breathing roots and pneumatophores of *A. alba*. Breathing roots and pneumatophores are often found in frontier zone mangrove species that are able to store a lot of water to dilute heavy metal concentrations in their body tissues, thereby reducing the toxicity of these metals (Dhalaria et al., 2020; Huang et al., 2020).

In this study, the concentration of Cu sediment is still below the quality standard set of 65 mg/kg (anzecc and Armcanz, 2000). The Cu concentrations that are still below the quality standard over time will continue to increase and have an impact on the surrounding ecosystem (Briffa et al., 2020; Najamuddin et al., 2023). The Cu adsorbed on sediments can still be bioavailable (Zhang et al., 2014). This condition indicates that Cu can be taken up by organisms as an essential metal that functions as a cofactor for several enzymes in the metabolic process even in controlled and limited concentrations (Kim et al., 2015; Hao et al. 2021). According to Shabbir et al. (2020), Cu can be toxic in high concentrations and can have a negative impact on the health of organisms

and the aquatic ecosystem as a whole. Just like Pb, the concentration of Cu in sediments is higher than that in roots. In addition, the concentration of Cu in the roots of *E. agallocha* detected in both areas exceeded the established quality standard of 10.57 ± 0.38 mg/kg. High concentrations of Cu can cause toxicity in plants that can interfere with the photosynthesis process, damage cell membranes, and inhibit root growth (Yuce et al., 2024).

Bioaccumulation and ecological risk assessments

The results of the bioaccumulation and ecological risk assessment of heavy metal pollution in mangrove roots and sediments are summarized in Table 5. Overall, the bioconcentration factor (BCF) results of roots bioaccumulating heavy metals from sediments were exclusionary for all Pb (0.15 and 0.21). In contrast, BCF Cu *A. alba* was 1.04 and *E. agallocha* amounted to 0.95. The geoaccumulation index showed uncontaminated nature for Pb (− 0.60 and − 0.47) and Cu (3.48 and − 3.42). The contamination factor (CF) showed low and moderate contamination for Pb (0.99–1.09) and Cu (0.13 and 0.20). PLI ranged from 0.37 to 0.47, indicating that the two station points were not polluted.

According to Table 5, the BCF of Cu in roots was higher than that of Pb. This suggests that the accumulation rate of Cu in roots is higher than that of Pb, which in this context can be influenced by several factors, including the chemical properties of the two metals and the selectivity of plants in absorbing heavy metals (Rezapour and Moazzeni 2016; Čurlík et al., 2016). According to Shabbir et al., (2020), copper is an essential metal required for biochemical processes and the biological functions of plants. However, excess Cu induces oxidative stress in the plant through increased production of reactive oxygen species (ROS). Meanwhile, Pb is a non-essential metal that has toxic properties and has no physiological or biochemical purpose (Collin et al., 2022). BCF describes the transfer and bioavailability of heavy metals from sediments to plants. $BCF > 1$ indicates that the heavy metal

uptake in plants is higher than in sediments, while $BCF < 1$ indicates that the heavy metal concentrations in sediments are higher than those absorbed by plants (Hellen, 2016). $BCF < 1$, which is an excluder, is due to the ability of plants to limit pollutants from entering other tissues (Aljahdali and Alhassan 2020; Luthansa et al., 2021b). In turn, $BCF > 1$ acts as a hypoximator, which absorbs pollutants and is able to tolerate continuing to grow and develop in a polluted environment (Skuzza et al., 2022). Previous BCF studies on mangroves were also conducted by Analuddin et al., (2023), showing BCF Hg, Cu, Mn, Pb, and Zn > 1 . This is likely related to the anthropogenic impact of the densely populated city of Kendari. Furthermore, the Igeo values observed in this study indicate that the sediments in the mangrove ecosystem at the study site are not contaminated ($I_{geo} < 0$).

The contaminants originating from human activities are also influenced by the dynamic nature of coastal areas, which are influenced by tides and currents, resulting in low levels of heavy metals (Chai et al., 2019; Akhtar et al., 2021; Chedadi et al., 2023). The Contamination Factor (Cf) of this study shows that each metal causes low contamination, except for Pb, which is included in moderate contamination. This is attributed to anthropogenic sources originating from around the Payung Island area, such as fishing boats, cargo ships, and household waste (Roziwan et al., 2024). In line with the findings (Rezaei et al., 2021), the CF values are 1.65 for Mn and 1.35 for Pb, respectively, indicating that the surface sediments in the Lishui River are moderately polluted by Mn and Pb. This is attributed to the source of Mn coming from agricultural and industrial activities and to the source of Pb coming from shipping activities. PLI can be used to characterize or make inferences about the pollution status of the ecosystem (Hummel et al., 2021; Jiang et al., 2020). The PLI value of sediments collected from mangrove ecosystems is classified as unpolluted ($PLI = 0 - 2$). In contrast to the results of the study (Gopal et al., 2023), the PLI values of all samples studied showed values above 1, indicating polluted sediments in the Vedaranyam coastline in

Table 5. Bioaccumulation and ecological risk assessment of heavy metal concentrations

Station	BCF		Igeo		Cf		PLI
	Pb	Cu	Pb	Cu	Pb	Cu	
St. 1 (<i>A. alba</i>)	0.15	1.04	-0.60	-3.48	0.99	0.13	0.36
St. 2 (<i>E. agallocha</i>)	0.21	0.95	-0.47	-3.42	1.09	0.20	0.47

Nagapattinam District, Tamil Nadu, India. This was attributed to the entire study area having metals contaminated by fluvial inputs transporting untreated wastewater to the marine environment.

CONCLUSIONS

The concentrations of Pb and Cu in the roots of *A. alba* and *E. agallocha* showed that despite the highest concentrations of heavy metals in the sediments, the ecological risk assessment indicated that the accumulation rates of mangrove roots were mostly in the low or non-polluting category. The overall risk assessment, including the bioconcentration factor, geoaccumulation index, contamination factor, and pollution load index, indicated that the environment around the mangrove roots was unlikely to be significantly polluted.

Acknowledgements

The research for this article was supported by a Center for Education Financial Services (PUS-LAPDIK Indonesia) (202209090887) and Indonesia Endowment Funds for Education (LPDP Indonesia) (202209090887).

REFERENCES

- Akhtar, N., Syakir Ishak, M.I., Bhawani, S.A., Umar, K. 2021. Various natural and anthropogenic factors responsible for water quality degradation: a review. *Water*, 13(19): 2660. <https://doi.org/10.3390/W13192660>
- Aljahdali, M.O., Alhassan, A.B. 2020. Ecological risk assessment of heavy metal contamination in mangrove habitats, using biochemical markers and pollution indices: A case study of *Avicennia marina* L. in the Rabigh lagoon, Red Sea. *Saudi J. Biol. Sci.*, 27(4): 1174–1184. <https://doi.org/10.1016/j.sjbs.2020.02.004>
- Almahasheer, H. 2019. High levels of heavy metals in Western Arabian Gulf mangrove soils. *Mol. Biol. Rep.*, 46(2): 1585–1592. <https://doi.org/10.1007/S11033-019-04603-2/METRICS>
- Anggraini, R.R., Yanuhar, U., Risjani, Y. 2020. Characteristic of sediment at Lekok coastal waters, Pasuruan Regency, East Java. *J. Ilmu Dan Teknol. Kelaut. Trop.*, 12(1): 235–246. <https://doi.org/10.29244/JITKT.V12I1.28705>
- Anzecc, Armcanz. 2000. Australian and New Zealand guidelines for fresh and marine water quality. In national water quality management strategy, 1.
- Ayu, S.M., Najib, N.N., Yumna, Y., Witno, W., Maria, M., Liana, L., Sada, N.H., Pitra, P. 2023. Soil physical characteristics of the mangrove ecosystem in bone bay, Palopo City. *Planta Trop.*, 11(2): 105–114. <https://doi.org/10.18196/pt.v11i2.16646>
- Briffa, J., Sinagra, E., Blundell, R. 2020. Heavy metal pollution in the environment and their toxicological effects on humans. 6(9): e04691. <https://doi.org/10.1016/J.HELIYON.2020.E04691>
- Castro, E., Pinedo, J., Marrugo, J., León, I. 2022. Retention and vertical distribution of heavy metals in mangrove sediments of the protected area swamp of Mallorquin, Colombian Caribbean. *Reg. Stud. Mar. Sci.*, 49: 102072. <https://doi.org/10.1016/J.RSMA.2021.102072>
- Chai, M., Li, R., Ding, H., Zan, Q. 2019. Occurrence and contamination of heavy metals in urban mangroves: A case study in Shenzhen, China. *Chemosphere*, 219: 165–173. <https://doi.org/10.1016/J.CHEMOSPHERE.2018.11.160>
- Chedadi, M., Amakdouf, H., Barnossi, A. El, Moussaoui, A. El, Kara, M., Asmi, H. El, Merzouki, M., Bari, A. 2023. Impact of anthropogenic activities on the physicochemical and bacteriological quality of water along Oued Fez River (Morocco). *Sci. African*, 19: e01549. <https://doi.org/10.1016/j.sciaf.2023.e01549>
- Chowdhury, A., Naz, A., Maiti, S.K. 2021. Bioaccumulation of potentially toxic elements in three mangrove species and human health risk due to their ethnobotanical uses. *Environ. Sci. Pollut. Res. Int.*, 28(25): 33042–33059. <https://doi.org/10.1007/S11356-021-12566-W>
- Collin, S., Baskar, A., Geevarghese, D.M., Ali, M.N.V.S., Bahubali, P., Choudhary, R., Lvov, V., Tovar, G.I., Senatov, F., Koppala, S., Swamiappan, S. 2022. Bioaccumulation of lead (Pb) and its effects in plants: A review. *J. Hazard. Mater. Lett.*, 3: 100064. <https://doi.org/10.1016/J.HAZL.2022.100064>
- Čurlík, J., Kolesár, M., uřurža, O., Hiller, E. 2016. Dandelion (*Taraxacum officinale*) and Agrimony (*Agrimonia eupatoria*) as Indicators of Geogenic Contamination of Flysch Soils in Eastern Slovakia. *Arch. Environ. Contam. Toxicol.*, 70(3): 475–486. <https://doi.org/10.1007/S00244-015-0206-Z>
- Dalimunthe, S.H., Damayanto, I.P.P.G., Martiansyah, I., Tihuraa, E.F., Rahmawati, K., Fastanti, F.S., Muhaimin, M. 2023. Pollen Micromorphology of Mangrove Species in South Sumatera Coastal Area, Indonesia. 52(9): 2499–2511. <https://doi.org/10.17576/JSM-2023-5209-03>
- Das, L., Patel, R., Salvi, H., Kamboj, R.D. 2019. Assessment of natural regeneration of mangrove with reference to edaphic factors and water in Southern Gulf of Kachchh, Gujarat, India. 5(8). <https://doi.org/10.1016/J.HELIYON.2019.E02250>

16. Dhalaria, R., Kumar, D., Kumar, H., Nepovimova, E., Kuca, K., Islam, M.T., Verma, R. 2020. Arbuscular mycorrhizal fungi as potential agents in ameliorating heavy metal stress in plants. *Agron.* 10(6): 815. <https://doi.org/10.3390/AGRONOMY10060815>
17. Dolagaratz Carricavur, A., Chiodi Boudet, L., Romero, M.B., Polizzi, P., Marcovecchio, J.E., Gerpe, M. 2018. Toxicological responses of *Laeonereis acuta* (Polychaeta, Nereididae) after acute, subchronic and chronic exposure to cadmium. *Ecotoxicol. Environ. Saf.*, 149: 217–224. <https://doi.org/10.1016/j.ecoenv.2017.11.048>
18. Esther Hellen, L. 2016. Heavy Metal Levels in Soil, Tomatoes and Selected Vegetables from Morogoro Region, Tanzania. *Int. J. Environ. Monit. Anal.*, 4(3): 82. <https://doi.org/10.11648/J.IJEMA.20160403.13>
19. Feng, D., Wang, R., Sun, X., Liu, L., Liu, P., Tang, J., Zhang, C., Liu, H. 2023. Heavy metal stress in plants: Ways to alleviate with exogenous substances. *Sci. Total Environ.*, 897: 165397. <https://doi.org/10.1016/J.SCITOTENV.2023.165397>
20. Fitria, Y., Rozirwan, Fitriani, M., Nugroho, R.Y., Fauziyah, Putri, W.A.E. 2023. Gastropods as bioindicators of heavy metal pollution in the Banyuasin estuary shrimp pond area, South Sumatra, Indonesia. *Acta Ecol. Sin.*, <https://doi.org/10.1016/J.CHNAES.2023.05.009>
21. Gao, W., Hodgkinson, L., Jin, K., Watts, C.W., Ashton, R.W., Shen, J., Ren, T., Dodd, I.C., Binley, A., Phillips, A.L., Hedden, P., Hawkesford, M. J., Whalley, W. R. 2016. Deep roots and soil structure. *Plant. Cell Environ.*, 39(8): 1662. <https://doi.org/10.1111/PCE.12684>
22. Giesen, W., Wulffraat, S., Zieren, M., Scholten, L. 2007. Mangrove guidebook for Southeast Asia. In *Mangrove guidebook for Southeast Asia*. FAO Regional Office for Asia and the Pacific.
23. Gopal, V., Krishnamurthy, R.R., Vignesh, R., Sabari Nathan, C., Anshu, R., Kalaivanan, R., Mohana, P., Magesh, N.S., Manikanda Bharath, K., Ekoa Bessa, A.Z., Abdelrahman, K., Abioui, M. 2023. Assessment of heavy metal contamination in the surface sediments of the Vedaranyam coast, Southern India. *Reg. Stud. Mar. Sci.*, 65: 103081. <https://doi.org/10.1016/J.RSMA.2023.103081>
24. Guo, Z., Gao, Y., Yuan, X., Yuan, M., Huang, L., Wang, S., Liu, C., Duan, C. 2023. Effects of heavy metals on stomata in plants: a review. *Int. J. Mol. Sci.*, 24(11). <https://doi.org/10.3390/IJMS24119302>
25. Hakanson, L. 1980. An ecological risk index for aquatic pollution control. a sedimentological approach. *Water Res.*, 14(8): 975–1001. [https://doi.org/10.1016/0043-1354\(80\)90143-8](https://doi.org/10.1016/0043-1354(80)90143-8)
26. Hao, S., Su, W., Li, Q.Q. 2021. Adaptive roots of mangrove *Avicennia marina*: Structure and gene expressions analyses of pneumatophores. *Sci. Total Environ.*, 757: 143994. <https://doi.org/10.1016/J.SCITOTENV.2020.143994>
27. Hao, Y., Miao, X., Liu, H., Miao, D. 2021. The variation of heavy metals bioavailability in sediments of liujiang river basin, sw china associated to their speciations and environmental fluctuations, a field study in typical karstic river. *Int. J. Environ. Res. Public Health*, 18(8). <https://doi.org/10.3390/IJERPH18083986/S1>
28. Harahap, S.A., Yuliadi, L.P.S., Sinulingga, J. N. 2020. Surficial sedimentary at the bottom in waters surrounding the arisen land of Putri Island, Karawang - Indonesia. *World Sci. News*, 151(2021): 95–109. <http://www.worldscientificnews.com/wp-content/uploads/2020/10/WSN-151-2021-95-109.pdf>
29. Hewindati, Y.T., Suhardi, D.A., Zuhairi, F.R., Diki, Yuliana, E. 2022. Occurrence of heavy metals Cu, Pb, and Cd in *Rhizophora apiculata* and *Sonneratia caseolaris* in the coastal area of Subang, West Java, Indonesia. 23(12): 6471–6479. <https://doi.org/10.13057/biodiv/d231246>
30. Hogarth, P.J. 2013. Mangrove Ecosystems. In *Encyclopedia of Biodiversity: second edition* (pp. 10 – 22). Academic Press. <https://doi.org/10.1016/B978-0-12-384719-5.00247-1>
31. Hossain Bhuiyan, M.A., Chandra Karmaker, S., Saha, B.B. 2022. Nexus between potentially toxic elements accumulation and seasonal/anthropogenic influences on mangrove sediments and ecological risk in Sundarbans, Bangladesh: An approach from GIS, self-organizing map, conditional inference tree and random forest models. *Environ. Pollut.*, 309: 119765. <https://doi.org/10.1016/J.ENVPOL.2022.119765>
32. Hossain, M.B., Masum, Z., Rahman, M.S., Yu, J., Noman, M.A., Jolly, Y.N., Begum, B.A., Paray, B. A., Arai, T. 2022. Heavy metal accumulation and phytoremediation potentiality of some selected mangrove species from the world’s largest mangrove forest. *Biology (Basel)*, 11(8): 1144. <https://doi.org/10.3390/BIOLOGY11081144/S1>
33. Huang, R., Zeng, J., Zhao, D., Cook, K.V., Hambright, K.D., Yu, Z. 2020. Sediment microbiomes associated with the rhizosphere of emergent macrophytes in a shallow, subtropical lake. *Limnol. Oceanogr.*, 65(S1): S38–S48. <https://doi.org/10.1002/lno.11325>
34. Hummel, C.A., Mellink, Y.A.M., Bienfait, L.J., Adamescu, M.C., Cazacu, C., Heurich, M., Medina, F.M., Morkünè, R., Švajda, J., Hummel, H. 2021. A practical novel assessment tool for the socio-ecological condition of Protected Areas: The Protection Level Index (PLI). *J. Nat. Conserv.*, 64: 126065. <https://doi.org/10.1016/J.JNC.2021.126065>
35. Jiang, H.H., Cai, L.M., Wen, H.H., Luo, J. 2020. Characterizing pollution and source identification of heavy metals in soils using geochemical baseline and PMF approach. *Sci. Rep.*, 10(1): 1–11. <https://doi.org/10.1038/s41598-020-63604-5>

36. Khan, B.N., Ullah, H., Ashfaq, Y., Hussain, N., Atique, U., Aziz, T., Alharbi, M., Albekairi, T. H., Alasmari, A.F. 2023. Elucidating the effects of heavy metals contamination on vital organ of fish and migratory birds found at fresh water ecosystem. 9(11): 2405–8440. <https://doi.org/10.1016/J.HELIVON.2023.E20968>
37. Kim, R.Y., Yoon, J.K., Kim, T.S., Yang, J.E., Owens, G., Kim, K.R. 2015. Bioavailability of heavy metals in soils: definitions and practical implementation—a critical review. *Environ. Geochemistry Heal.* 2015 376, 37(6): 1041–1061. <https://doi.org/10.1007/S10653-015-9695-Y>
38. Li, X., Zhang, J., Gong, Y., Liu, Q., Yang, S., Ma, J., Zhao, L., Hou, H. 2020. Status of copper accumulation in agricultural soils across China (1985–2016). *Chemosphere*, 244: 125516. <https://doi.org/10.1016/J.CHEMOSPHERE.2019.125516>
39. Lin, Z., Zhong, C., Yu, G., Fu, Y., Guan, B., Liu, Z., Yu, J. 2021. Effects of sediments phosphorus inactivation on the life strategies of *Myriophyllum spicatum*: Implications for lake restoration. 13(15). <https://doi.org/10.3390/w13152112>
40. Luthansa, U.M., Titah, H.S., Pratikno, H. 2021a. The ability of mangrove plant on lead phytoremediation at Wonorejo Estuary, Surabaya, Indonesia. *J. Ecol. Eng.*, 22(6): 253–268. <https://doi.org/10.12911/22998993/137675>
41. Luthansa, U.M., Titah, H.S., Pratikno, H. 2021b. The ability of mangrove plant on lead phytoremediation at Wonorejo Estuary, Surabaya, Indonesia. *J. Ecol. Eng.*, 22(6): 253–268. <https://doi.org/10.12911/22998993/137675>
42. Maiti, S.K., Ghosh, D., Raj, D. 2022. Phytoremediation of fly ash: bioaccumulation and translocation of metals in natural colonizing vegetation on fly ash lagoons. *Handb. Fly Ash*, 501–523. <https://doi.org/10.1016/B978-0-12-817686-3.00011-6>
43. Maulana, F., Muhiddin, A.H., Lanuru, M., Samad, W., Ukkas, M. 2023. Distribution of bottom sediment before and after reclamation at center point of Indonesia (Cpi) Makassar City. *J. Ilmu Kelaut. SPERMONDE*, 9(1): 10–19. <https://doi.org/10.20956/jiks.v9i1.19929>
44. Meiyerani, J., Melki, M., Aryawati, R., Rozirwan, R., Ningsih, E.N., Wulandari, T.N.M., Nugroho, R.Y. 2024. 16S rRNA gen analysis of plastic destruction bacteria, South Sumatra, Indonesia. *J. Ecol. Eng.*, 25(3): 85–95. <https://doi.org/10.12911/22998993/178272>
45. Mitra, S., Chakraborty, A.J., Tareq, A.M., Emran, T. Bin, Nainu, F., Khusro, A., Idris, A.M., Khandaker, M.U., Osman, H., Alhumaydhi, F.A., Simal-Gandara, J. 2022. Impact of heavy metals on the environment and human health: Novel therapeutic insights to counter the toxicity. *J. King Saud Univ. - Sci.*, 34(3): 101865. <https://doi.org/10.1016/J.JKSUS.2022.101865>
46. Mondal, S., Ghosh, D., Ramakrishna, K. 2016. A complete profile on blind-your-eye mangrove *Excoecaria agallocha* L. (Euphorbiaceae): Ethnobotany, phytochemistry, and pharmacological aspects. *Pharmacogn. Rev.*, 10(20): 123–138. <https://doi.org/10.4103/0973-7847.194049>
47. Mosa, A., Selim, E.M. M., El-Kadi, S.M., Khedr, A.A., Elnaggar, A.A., Hefny, W.A., Abdelhamid, A. S., El Kenawy, A. M., El-Naggar, A., Wang, H., Shaheen, S. M. 2022. Ecotoxicological assessment of toxic elements contamination in mangrove ecosystem along the Red Sea coast, Egypt. *Mar. Pollut. Bull.*, 176: 113446. <https://doi.org/10.1016/J.MARPOLBUL.2022.113446>
48. Muller, G. 1969. Index of geo-accumulation in sediments of the Rhine river – *ScienceOpen. J. Geol.*. <https://www.scienceopen.com/document?vid=4b875795-5729-4c05-9813-64951e2ca488>
49. Nagarajan, R., Anandkumar, A., Hussain, S.M., Jonathan, M.P., Ramkumar, M., Eswaramoorthi, S., Saptoro, A., Chua, H. B. 2019. Geochemical characterization of Beach Sediments of Miri, NW Borneo, SE Asia: Implications on Provenance, weathering intensity, and assessment of coastal environmental status. *Coast. Zo. Manag. Glob. Perspect. Reg. Process. Local Issues*, 279–330. <https://doi.org/10.1016/B978-0-12-814350-6.00012-4>
50. Najamuddin, Inayah, Labenua, R., Samawi, M.F., Yaqin, K., Paembonan, R.E., Ismail, F., Harahap, Z. A. 2023. Distribution of heavy metals Hg, Pb, and Cr in the coastal waters of small islands of Ternate, Indonesia. *Acta Ecol. Sin.*, <https://doi.org/10.1016/J.CHNAES.2023.09.002>
51. Nnaji, N.D., Onyeaka, H., Miri, T., Ugwa, C. 2023. Bioaccumulation for heavy metal removal: a review. *SN Appl. Sci.*, 5(5): 1–12. <https://doi.org/10.1007/S42452-023-05351-6/METRICS>
52. Ogundele, D., Adio, A., Oludele, O. 2015. Heavy metal concentrations in plants and soil along heavy traffic roads in North Central Nigeria. *J. Environ. Anal. Toxicol.*, 5(6): 6–10. <https://doi.org/10.4172/2161-0525.1000334>
53. Poppe, L.J., Eliason, A.H. 2008. A Visual Basic program to plot sediment grain-size data on ternary diagrams *S. Comput. Geosci.*, 34: 561–565. <https://doi.org/10.1016/j.cageo.2007.03.019>
54. Ragavan, P., Ravichandran, K., Mohan, P.M., Sxaena, A., Prasanth, R.S., Jayaraj, R.S.C., Saravanan, S. 2015. Short communication: Note on *Excoecaria indica* (Willd.) Muell.-Arg, 1863 (Euphorbiaceae), from the Andaman and Nicobar Islands, India; a data deficient species. 16(1): 22–26. <https://doi.org/10.13057/biodiv/d160104>

55. Raj, K., Das, A. P. 2023. Lead pollution: Impact on environment and human health and approach for a sustainable solution. *Environ. Chem. Ecotoxicol.*, 5: 79–85. <https://doi.org/10.1016/J.ENCECO.2023.02.001>
56. Rezaei, M., Kafaei, R., Mahmoodi, M., Sanati, A.M., Vakilabadi, D.R., Arfaeinia, H., Dobaradaran, S., Sorial, G.A., Ramavandi, B., Boffito, D.C. 2021. Heavy metals concentration in mangrove tissues and associated sediments and seawater from the north coast of Persian Gulf, Iran: Ecological and health risk assessment. *Environ. Nanotechnology, Monit. Manag.*, 15(April): 100456. <https://doi.org/10.1016/j.enmm.2021.100456>
57. Rezapour, S., Moazzeni, H. 2016. Assessment of the selected trace metals in relation to long-term agricultural practices and landscape properties. *Int. J. Environ. Sci. Technol.*, 13(12): 2939–2950. <https://doi.org/10.1007/S13762-016-1146-5/METRICS>
58. Robin, S.L., Marchand, C., Ham, B., Pattier, F., Laporte-Magoni, C., Serres, A. 2021. Influences of species and watersheds inputs on trace metal accumulation in mangrove roots. *Sci. Total Environ.*, 787: 147438. <https://doi.org/10.1016/J.SCITOTENV.2021.147438>
59. Romano, E., Magno, M.C., Bergamin, L. 2017. Grain size data analysis of marine sediments, from sampling to measuring and classifying. A critical review. *IMEKO TC19 Work. Metro. Sea, Metro-Sea 2017 Learn. to Meas. Sea Heal. Parameters, 2017-October*: 173–178.
60. Rozirwan, Az-Zahrah, S. A.F., Khotimah, N.N., Nugroho, R.Y., Putri, W.A.E., Fauziyah, Melki, Agustriani, F., Siregar, Y.I. 2024. Ecological risk assessment of heavy metal (Pb, Cu) contamination in water, sediment, and Polychaeta (*Neoleanira tetragona*) from coastal areas affected by aquaculture, urban rivers, and ports in South Sumatra. *J. Ecol. Eng.*, 25(1): 303–319. <https://doi.org/10.12911/22998993/175365>
61. Rozirwan, Fauziyah, F., Nugroho, R.Y., Melki, M., Ulqodry, T.Z., Agustriani, F., Ningsih, E. N., Ayu, W., Putri, E., Absori, A., Iqbal, M. 2022a. An ecological assessment of crab's diversity among habitats of migratory birds at berkak-sembilang national park Indonesia. *Int. J. Conserv. Sci.*, 13(3). www.ijcs.ro
62. Rozirwan, Fauziyah, Wulandari, P.I., Nugroho, R. Y., Agustriani, F., Agussalim, A., Supriyadi, F., Iskandar, I. 2022b. Assessment distribution of the phytoplankton community structure at the fishing ground, Banyuasin estuary, Indonesia. *Acta Ecol. Sin.* <https://doi.org/10.1016/J.CHNAES.2022.02.006>
63. Rozirwan, Khotimah, N.N., Putri, W.A.E., Fauziyah, Aryawati, R., Damiri, N., Isnaini, Nigr. 2023f. Environmental risk assessment of Pb, Cu, Zn, and Cd concentrations accumulated in selected mangrove roots and surrounding their sediment. 24(12): 6733–6742. <https://doi.org/10.13057/biodiv/d241236>
64. Rozirwan, Melki, Apri, R., Nugroho, R.Y., Fauziyah, Agussalim, A., Iskandar, I. 2021. Assessment of phytoplankton community structure in musi estuary, south sumatra, indonesia. *AACL Bioflux*, 14(3): 1451–1463.
65. Rozirwan, Muda, H.I., Ulqodry, T.Z. 2020. Short communication: Antibacterial potential of actinomycetes isolated from mangrove sediment in Tanjung api-api, South Sumatra, Indonesia. 21(12): 5723–5728. <https://doi.org/10.13057/biodiv/d211232>
66. Rozirwan, R., Bahrudin, I., Barus, B. S., Nugroho, R. Y., Khotimah, N.N. 2023e. First assesment of coral Mussidae in Kelagian Island waters, Lampung. *Proc. 9TH Int. Symp. Innov. Bioprod. Indones. Biotechnol. Bioeng. 2022 Strength. Bioeconomy through Appl. Biotechnol. Bioeng. Biodivers.*, 2972(1): 040008. <https://doi.org/10.1063/5.0171642/2931856>
67. Rozirwan, R., Hananda, H., Nugroho, R.Y., Apri, R., Khotimah, N.N., Fauziyah, F., Putri, W. A.E., Aryawati, R. 2023c. Antioxidant activity, total phenolic, phytochemical content, and HPLC profile of selected mangrove species from Tanjung Api-Api Port Area, South Sumatra, Indonesia. *Trop. J. Nat. Prod. Res. Available*, 7(7): 3482–3489.
68. Rozirwan, R., Muhtadi, M., Ulqodry, T.Z., Nugroho, R. Y., Khotimah, N.N., Fauziyah, F., Putri, W. A. E., Aryawati, R., Mohamed, C. A. R. 2023a. Insecticidal activity and phytochemical profiles of avicennia marina and excoecaria agallocha leaves extracts. *ILMU Kelaut. Indones. J. Mar. Sci. Vol 28, No 2 Ilmu KelautanDO - 10.14710/Ik.Ijms.28.2.148-160, 28(June)*: 148–160. <https://doi.org/10.14710/ik.ijms.28.2.148-160>
69. Rozirwan, Ramadani, S., Ayu, W., Putri, E., Nur, N., Nugroho, R.Y. 2023d. Evaluation of calcium and phosphorus content in Scallop Shells (*Placuna placenta*) and Blood Cockle Shells (*Anadara granosa*) from Banyuasin Waters, South Sumatra. *Egypt. J. Aquat. Biol. Fish. Zool. Dep. Fac. Sci.*, 27(3): 1053–1068.
70. Rozirwan, Saputri, A.P., Nugroho, R.Y., Khotimah, N.N., Putri, W.A.E., Fauziyah, Purwiyanto, A.I.S. 2023b. An Assessment of Pb and Cu in waters, sediments, and mud crabs (*Scylla serrata*) from mangrove ecosystem near tanjung Api-Api Port Area, South Sumatra, Indonesia. *Sci. Technol. Indones.*, 8(4): 675–683. <https://doi.org/10.26554/sti.2023.8.4.675-683>
71. Saputra, A., Nugroho, R.Y., Isnaini, R., Rozirwan. 2021. A review: The potential of microalgae as a marine food alternative in Banyuasin Estuary, South Sumatra, Indonesia. *Egypt. J. Aquat. Biol. Fish.*, 25(2): 1053–1065. <https://doi.org/10.21608/EJABF.2021.170654>
72. Schauss, A.G. 2016. Advances in the study of the health benefits and mechanisms of action of the pulp and seed of the Amazonian palm fruit, *Euterpe oleracea* Mart., known as “Açai.” *Fruits, Veg. Herbs*

- Bioact. Foods Heal. Promot., 179–220. <https://doi.org/10.1016/B978-0-12-802972-5.00010-X>
73. Shabbir, Z., Sardar, A., Shabbir, A., Abbas, G., Shamsad, S., Khalid, S., Natasha, Murtaza, G., Dumat, C., Shahid, M. 2020. Copper uptake, essentiality, toxicity, detoxification and risk assessment in soil-plant environment. *Chemosphere*, 259: 127436. <https://doi.org/10.1016/J.CHEMOSPHERE.2020.127436>
 74. Shaheen, S.M., Abdelrazek, M.A.S., Elthoth, M., Moghanm, F.S., Mohamed, R., Hamza, A., El-Habashi, N., Wang, J., Rinklebe, J. 2019. Potentially toxic elements in saltmarsh sediments and common reed (*Phragmites australis*) of Burullus coastal lagoon at North Nile Delta, Egypt: A survey and risk assessment. *Sci. Total Environ.*, 649: 1237–1249. <https://doi.org/10.1016/J.SCITOTENV.2018.08.359>
 75. Shaheen, S.M., Shams, M S., Khalifa, M.R., El-Dali, M.A., Rinklebe, J. 2017. Various soil amendments and environmental wastes affect the (im)mobilization and phytoavailability of potentially toxic elements in a sewage effluent irrigated sandy soil. *Ecotoxicol. Environ. Saf.*, 142: 375–387. <https://doi.org/10.1016/J.ECOENV.2017.04.026>
 76. Siraj, M.A., Medha, M.M., Nahar, A.U., Islam, M.A., Seidel, V. 2023. Mangrove endophytes and their natural metabolites: role in promoting plant health. *Microb. Endophytes Plant Growth*, 99–116. <https://doi.org/10.1016/B978-0-323-90620-3.00015-5>
 77. Skuza, L., Szućko-Kociuba, I., Filip, E., Bożek, I. 2022. Natural molecular mechanisms of plant hyperaccumulation and hypertolerance towards heavy metals. *Int. J. Mol. Sci.*, 23(16). <https://doi.org/10.3390/IJMS23169335>
 78. Song, Y., Choi, M.S., Lee, J.Y., Jang, D.J. 2014. Regional background concentrations of heavy metals (Cr, Co, Ni, Cu, Zn, Pb) in coastal sediments of the South Sea of Korea. *Sci. Total Environ.*, 482–483(1): 80–91. <https://doi.org/10.1016/J.SCITOTENV.2014.02.068>
 79. Stachew, E., Houette, T., Gruber, P. 2021. Root systems research for bioinspired resilient design: a concept framework for foundation and coastal engineering. *Front. Robot. AI*, 8: 548444. <https://doi.org/10.3389/FROBT.2021.548444/BIBTEX>
 80. Szafranski, G.T., Granek, E.F. 2023. Contamination in mangrove ecosystems: A synthesis of literature reviews across multiple contaminant categories. *Mar. Pollut. Bull.*, 196: 115595. <https://doi.org/10.1016/J.MARPOLBUL.2023.115595>
 81. Wang, Y., Qiu, Q., Xin, G., Yang, Z., Zheng, J., Ye, Z., Li, S. 2013. Heavy metal contamination in a vulnerable mangrove swamp in South China. *Environ. Monit. Assess.*, 185(7): 5775–5787. <https://doi.org/10.1007/s10661-012-2983-4>
 82. WHO. 1996. World Health Organization on Heavy metals -Permissible limits of heavy metals in soil and plants (Geneva: World Health Organization), Switzerland.
 83. Yadav, K.K., Gupta, N., Prasad, S., Malav, L.C., Bhutto, J.K., Ahmad, A., Gacem, A., Jeon, B. H., Fallatah, A.M., Asghar, B.H., Cabral-Pinto, M.M.S., Awwad, N.S., Alharbi, O.K.R., Alam, M., Chaiprapat, S. 2023. An eco-sustainable approach towards heavy metals remediation by mangroves from the coastal environment: A critical review. *Mar. Pollut. Bull.*, 188: 114569. <https://doi.org/10.1016/J.MARPOLBUL.2022.114569>
 84. Yousif, R., Choudhary, M.I., Ahmed, S., Ahmed, Q. 2021. Review: Bioaccumulation of heavy metals in fish and other aquatic organisms from Karachi Coast, Pakistan. *Nusant. Biosci.*, 13(1): 73–84. <https://doi.org/10.13057/nusbiosci/n130111>
 85. Ytreberg, E., Hansson, K., Hermansson, A.L., Parmo, R., Lagerström, M., Jalkanen, J.P., Hassellöv, I. M. 2022. Metal and PAH loads from ships and boats, relative other sources, in the Baltic Sea. *Mar. Pollut. Bull.*, 182: 113904. <https://doi.org/10.1016/J.MARPOLBUL.2022.113904>
 86. Yuce, M., Ekinçi, M., Turan, M., Agar, G., Aydin, M., İlhan, E., Yildirim, E. 2024. Chrysin mitigates copper stress by regulating antioxidant enzymes activity, plant nutrient and phytohormones content in pepper. *Sci. Hortic. (Amsterdam)*, 328: 112887. <https://doi.org/10.1016/J.SCIENTA.2024.112887>
 87. Zaynab, M., Al-Yahyai, R., Ameen, A., Sharif, Y., Ali, L., Fatima, M., Khan, K.A., Li, S. 2022. Health and environmental effects of heavy metals. *J. King Saud Univ. - Sci.*, 34(1): 101653. <https://doi.org/10.1016/J.JKSUS.2021.101653>
 88. Zhang, C., Yu, Z. Gang, Zeng, G. Ming, Jiang, M., Yang, Z. Zhu, Cui, F., Zhu, M. Ying, Shen, L. Ging, Hu, L. 2014. Effects of sediment geochemical properties on heavy metal bioavailability. *Environ. Int.*, 73: 270–281. <https://doi.org/10.1016/j.envint.2014.08.010>
 89. Zheng, R., Liu, Y., Zhang, Z. 2023. Trophic transfer of heavy metals through aquatic food web in the largest mangrove reserve of China. *Sci. Total Environ.*, 899: 165655. <https://doi.org/10.1016/J.SCITOTENV.2023.165655>
 90. Zhong, W.S., Ren, T., Zhao, L.J. 2016. Determination of Pb (Lead), Cd (Cadmium), Cr (Chromium), Cu (Copper), and Ni (Nickel) in Chinese tea with high-resolution continuum source graphite furnace atomic absorption spectrometry. *J. Food Drug Anal.*, 24(1): 46–55. <https://doi.org/10.1016/J.JFDA.2015.04.010>
 91. Zürcher, E., Müller, B. 2016. Cytokinin Synthesis, Signaling, and Function – Advances and New Insights. *Int. Rev. Cell Mol. Biol.*, 324: 1–38. <https://doi.org/10.1016/BS.IRCMB.2016.01.001>