

ISBN: 978-1-4673-1020-8

IEEE Catalog Number: CFP1230D-ART

Proceedings of 2012 IEEE International Conference on Condition Monitoring and Diagnosis

Bali-Indonesia, September 23-27, 2012

Co-Organized by



School of Electrical Engineering and Informatics
Institut Teknologi Bandung



Department of Electrical Engineering
Udayana University

Sponsored by



IEEE Dielectrics and Electrical Insulation Society



The Self-healing Property of Silicone Rubber after Degraded by Treeing

Rudi K, Andrew D.H, Managam R

Zainuddin Nawawi

Naohiro Hozumi & Masayuki Nagao

Dept. of Electrical Engineering
Tanjungpura University
Pontianak, Indonesia
rudikuru@gmail.com

Dept. of Electrical Engineering
Sriwijaya University
Palembang, Indonesia
nawawi_z@yahoo.com

Dept. of Electr. & Electronics Engg.
Toyohashi University of Technology
Toyohashi, Japan
nagao@eee.tut.ac.jp

Abstract—Early damage of insulation systems is indicated by the existing of partial discharge within it. It is a release of electrical charges that occur locally at some parts of insulation, which leading to completely insulation failure. A measurement is conducted to know its mechanism in insulation. This research deals with the correlations of self-healing properties (i.e. the decrease of tree length and the partial discharge inception voltage (PDIV) of silicone rubber material. This research is carried out in high voltage engineering laboratory, Tanjungpura University, using silicone rubber material without filler. The results data show that electrical treeing grew after the voltage was applied exactly at its inception level (6 kV for 45 minutes). Silicone rubber specimens could self-heal after the occurrence of electrical treeing in the range of 0 to 72 hours. The PDIV was getting higher as the process of self-healing in electrical treeing. This means that the physical self-healing of the specimen (by the decrease of tree length) would be followed by its electrical self-healing (by the increase of PDIV).

Keywords—silicone rubber; electrical treeing; tree inception voltage; tree length; PDIV; self-healing

I. INTRODUCTION

Insulation is very important in electrical apparatus. Thus, it must have high dielectric strength against an electric field stresses in service. However, during the processes of fabrication, installation, and services, there is a probability that defects to appear in the insulation such as conductive contaminant, void, and protrusions. Successive electric stresses during service results in the insulation ageing, partial discharge and treeing could happen to start from these defects. If this electrical treeing bridges the insulation, then insulation failure could occur. One of widely used insulation in the electrical apparatus is silicone rubber (SiR). This material has many advantages, i.e. ability to repel water (hydrophobicity), light, easy to install, cheap, and compatible with additives. Many researchers said that silicone rubber can strengthen surface insulation if it is used as coating [1-3]. From the flashover test, insulator can recover its insulating property after had been coated by SiR. Nevertheless, investigation about self-healing the bulk of SiR after degraded by electrical treeing is still few [4]. Therefore, we want to know whether or not the self-healing property of SiR physically has also

happened in treeing phenomena. Furthermore, whether or not physical self-healing of SiR is accompanied by electrical self-healing by investigating its partial discharge inception voltage (PDIV). This research is conducted in high-voltage engineering laboratory, Tanjungpura University, with simple equipments and limited budget; hopefully, it can inspire students in Electrical Engineering Department in Indonesian Universities to investigate electrical treeing degradation.

II. EXPERIMENTAL

A. Specimens Preparation

The specimen configuration used in this research is shown in Figure 1 below.

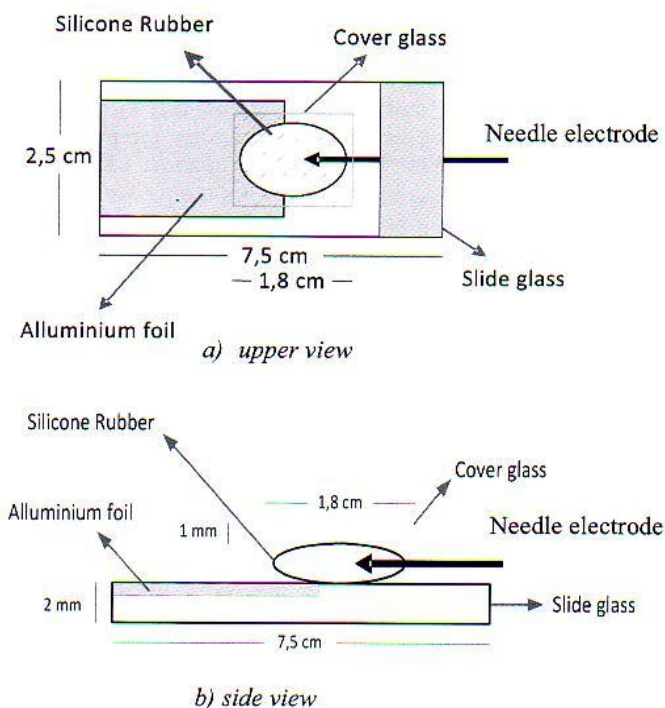


Figure 1. Specimen Configuration

The tungsten needle with 0.25 mm in diameter was used as a needle electrode. The needle tip was formed by electrolytic polishing, as shown in Figure 2. The tip radius was about 5 μm .

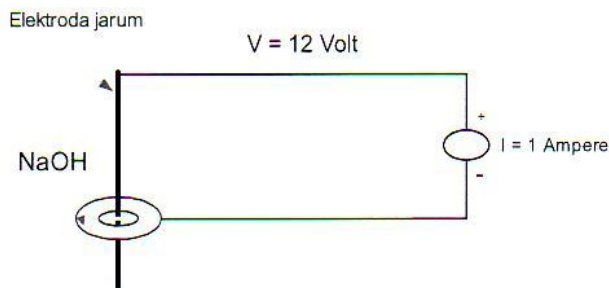


Figure 2. Elelctrolityc polishing and needle tip result

Aluminium foil was applied as a counter electrode at a distance of 2 mm from the tip of tungsten needle. After blending silicone rubber and hardener, the compound was pasted on to the slide glass. Then the cover glass placed on the silicone rubber was kept at a proper distance from the surface of the slide glass using a film spacer. The specimen was cured for 24 hours.

B. Experimental Procedures

The specimens were placed in a chamber filled with silicone oil of 10 mm^2/s (or 10 cSt) in viscosity to prevent the surface flashover. Figure 3 showed the experiment setup. To start the experiment, turn on the switch S_1 and S_2 , and let it about 1 minute. Rise up the test voltage by turning up the regulator slowly with the increasing rate of about 1 kV/second until reach 4 kV, and let it about 5 minutes. Turn off the voltage, and ground the entire component including specimens. Remove the specimen and inspect tree inception using microscope optic. If there is tree inception in the specimen, then the tree inception voltage was 4 kV. Otherwise, do the same procedure for other voltages of 5, 6, 7, 8 kV, etc., until the tree inception is found in the specimen after being inspected by optic microscope.

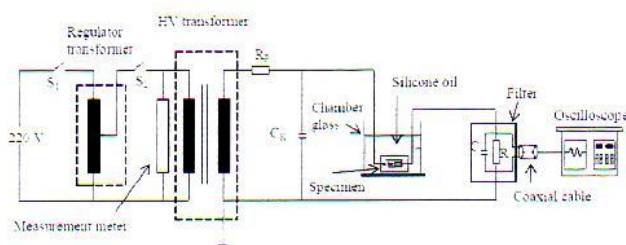


Figure 3. Experimental procedure

The tree inception voltage was defined as the voltage when tree length had exceeded 10 μm [5]. In this research, the tree inception voltage is determined by averaging about 10 specimens. Furthermore, other specimens are also being tested by applying the voltage exactly at their inception level for about 45 minutes. Then the voltage was removed and the self healing properties are investigated by measuring the tree length as a function of time. The intervals of time are 0, 3, 24, 48, and 72 hours. And at each time interval, the PDIV are also being measured by applying the voltage with increasing rate of 1 kV/second until the first discharge occur. All experiments are conducted under room temperature.

III. RESULTS AND DISCUSSION

The tree inception voltage in this investigation was 6 kV. It is determined by averaging the tree inception voltages of 10 samples as shown in Figure 4 below.

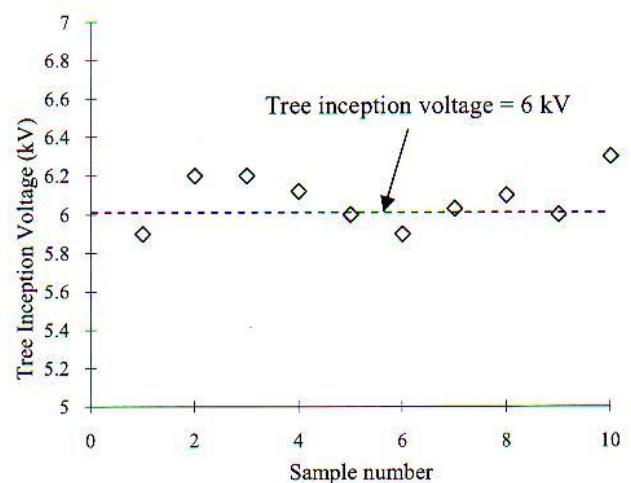


Figure 4. Tree inception voltages

After applying voltage exactly at their inception level to the specimens for about 45 minutes and removed the voltage from the specimens then the self healing property could be seen clearly from Figure 5. The self healing property of SiR showed a high value after 3 hours. However, after 24, 48, and 72 hours, the property showed relatively linear increased. It is considered that the tree growth after 45 minutes has many unstable branches; hence within 3 hours of recovery, the length has decreased with huge values. In the range of 3 to 24 hours, the relatively stable branches have showed slow recovery. This slow recovery is still continued to occur for the next range interval.

The same trend could be broken down from this result by plotting the self healing rate ($\mu\text{m}/\text{hours}$) as y-axis and time interval as x-axis, as shown in Figure 6.

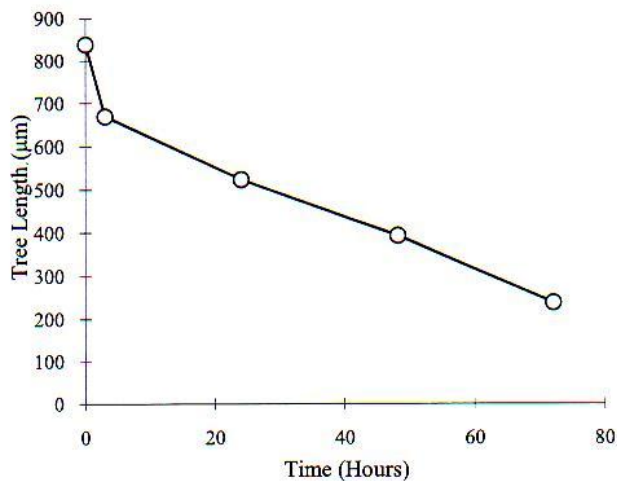
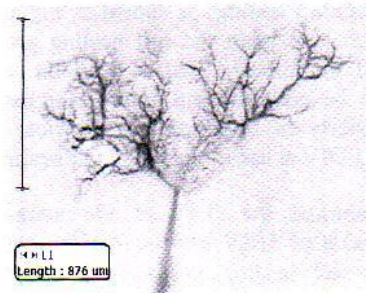
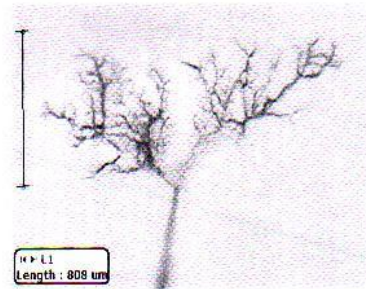


Figure 5. Physical self-healing of SiR after degraded by trees

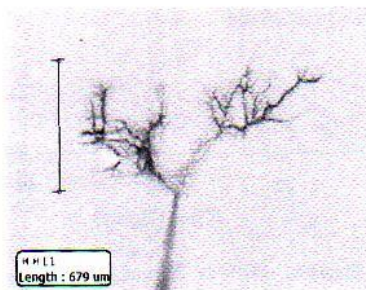
0 hour



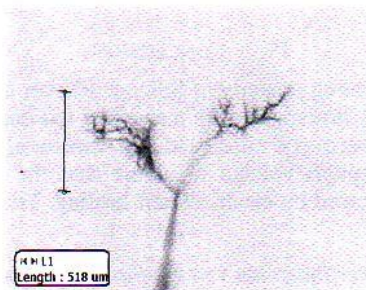
3 hours



24 hours



48 hours



72 hours

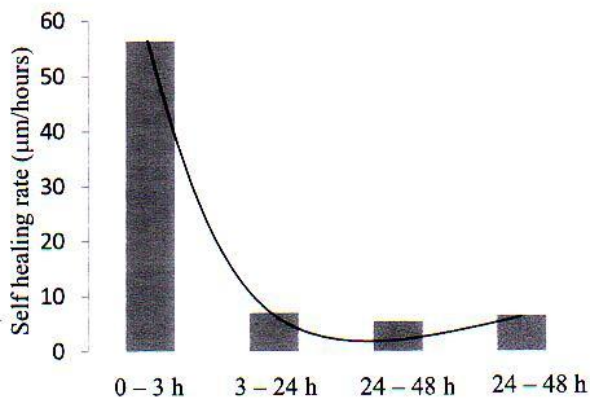
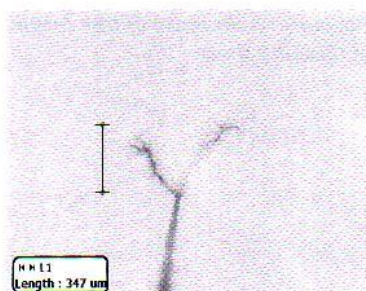


Figure 6. Self-healing rate

The self healing rate is more clearly seen in this figure. The rate of about 55 $\mu\text{m}/\text{hours}$ of the first interval abruptly decreases to about 5 $\mu\text{m}/\text{hours}$ in the second, third, and fourth intervals. Of course the time interval could be adjusted not too long but with long period of recovery to get more complete information about the self healing rate for the next research.

Typical self healing property is shown in Figure 7. After the tree growth for about 45 minutes then voltage was terminated and removed from the specimen. At first, the tree length was 876 μm , then after 3, 24, 48, and 72 hours it reduces to be 808, 679, 518, 347 μm , respectively.

Figure 7. Typical self-healing of SiR after degraded by trees

The physical self healing as shown in Figures 5 – 7, are still not enough to explain the self healing property of SiR after degraded by treeing. That is why the electrical self healing has to be conducted to assure that the recovery of insulation property is followed by electrical recovery by measuring the PDIV at each interval of self healing.

Figure 8 showed the PDIV of SiR after degraded by treeing. The value of PDIV increased as the increase of time interval. The self healing property exhibit from SiR is followed by electrical recovery by the increase of PDIV.

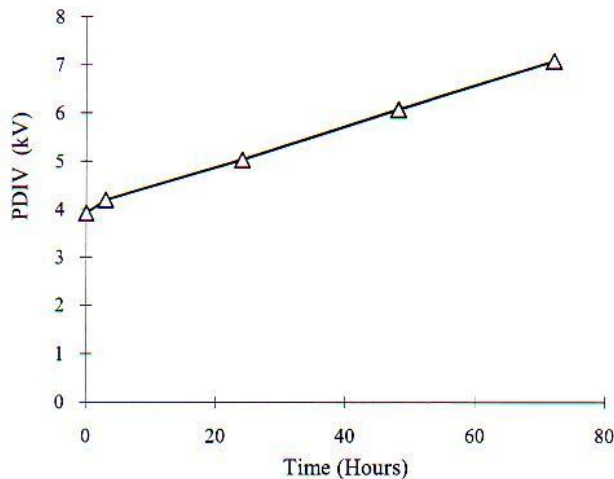


Figure 8. PDIV vs. Time of self healing

IV. CONCLUSIONS

The self healing property of Silicone Rubber after degraded by treeing was investigated by measuring the decrease of tree length after recovery time and by measuring the partial discharge inception voltage to assure that the physical self healing is followed by electrical self healing. The main results is as follows.

- a) The tree inception voltage for this research was 6 kV.
- b) SiR showed self healing property after degraded by treeing. It is shown by its decrease of tree length and increase of PDIV during recovery times.

- c) The self healing is shown with abruptly increased value in the interval of 0-3 hours, and followed by linear increase in the interval above 3 hours.

ACKNOWLEDGMENT

The chances for discussion and tutorial from Prof. Masayuki Nagao and Prof. Naohiro Hozumi were innumerable lessons in which the author can develop specimens and experimental setup for high voltage engineering research in Indonesia.

REFERENCES

- [1] Ashandi Belli, "The Effect of Filler on the Treeing Propagation in Silicone Rubber/Oil Palm Endokaprium Composite," Skripsi, Department of Electrical Engineering, Engineering Faculty, Tanjungpura University, Pontianak, 2009.
- [2] Bustmi AR, "Leakage Current Characteristics and Maintenance on 20 kV Outdoor Porcelain Insulator", Skripsi, Department of Electrical Engineering, Engineering Faculty, Tanjungpura University, Pontianak 2009.
- [3] Harnika, "The Use of Hydrophobic Material to Protect the Insulator Surface against Pollution", Skripsi, Department of Electrical Engineering, Engineering Faculty, Tanjungpura University, Pontianak 2009.
- [4] N. Hozumi, K. Nishioka, T. Suematsu, Y. Murakami, M. Nagao, H. Sakata, Fundamental Study on Self-healing Insulation Performance of Silicone Rubber Affected by Local Breakdown, IEEJ Trans. FM, Vol. 125, No.2, 2005, pp.172-178.
- [5] L.A. Dissado and J.C. Fothergill, "Electrical Degradation and Breakdown in Polymers", Ed. G.C. Stevens, London, Peter Peregrinus, 1992.
- [6] Andrew Dwi Hastoro, "The Effect of Self healing of PDIV and Tree length in Silicone Rubber," Skripsi, Department of Electrical Engineering, Engineering Faculty, Tanjungpura University, Pontianak 2011.
- [7] Saronandus Stephen, "Study on Corona Discharge Phenomena Via Partial Discharge Measurement," Skripsi, Department of Electrical Engineering, Engineering Faculty, Tanjungpura University, Pontianak, 2002.
- [8] Fedy irawan, "Detection on Partiala Discharge Phenomena on the Interface of XLPE-EPR insulation," Skripsi, Department of Electrical Engineering, Engineering Faculty, Tanjungpura University, Pontianak, 2001.
- [9] G. Sawa, K. Arakawa, M. Nagano, and M. Ieda, "Conditions for Complete Self-healing Breakdown in Glow discharge Polymerised Styrene Films", Thin Solid Films, Vol. 59, pp.131-141, 1979.
- [10] S. Mokry, S. Carter, J. Clemmer, and P. George, "Cable Fault Prevention Using Dielectric Enhancement Technology", Proc. 4th Intl. Conf. on Insulated Power Cable (JICABLE 95), B.10.2, 1995.

Time Lag in CM-II Electrode System Attributed to Dielectric Surface Conditioning

Zainuddin Nawawi

Hussein Ahmad

Rudi Kurnianto

N. Hozumi and M. Nagao

Dept. of Electrical Engineering
Sriwijaya University
Palembang, Indonesia
nawawi_z@yahoo.com

Faculty of Engineering
Universiti Teknologi Malaysia
Johor Bahru, Malaysia

Dept. of Electrical Engineering
Tanjungpura University
Pontianak, Indonesia
rudikuru@gmail.com

Dept. of Electr. & Electron. Engg.
Toyohashi University of Tech.
Toyohashi, Japan
nagao@eee.tut.ac.jp

Abstract—This paper deals with a digest on discharge time lag characteristics in a cylindrical void bounded polymethyl-methacrylate (PMMA) and metal using the CIGRE method II (CM-II) electrode system. The specimens were treated by plasma irradiations (0, 3, 6, 11, 16, 21 seconds) simulating material ageing in service which are very difficult to measure. It was found that, under room temperature, the longer plasma irradiation to the void surface will result in higher degree of surface roughness indicated by the increase of surface protrusion sizes. The statistical discharge time lag (SDTL) has been studied using square pulse voltage with rising time 40 μ s, through 64 pulses. The SDTL value is inversely proportional to the surface conditioning. For a particular time period of plasma irradiation (3 s), the specimens seem to recover its insulating property after given recovery time of 20, 60, and 180 minutes compared to that of without recovery time.

Keywords—CM-II electrode system; PMMA; plasma irradiation; square pulse voltage; SDTL; recovery times

I. INTRODUCTION

The breakdown due to rapidly changing voltages or impulses voltages is of great importance in the selection of outdoor insulation system for high voltage application when taking into consideration the phenomena in the outdoor insulation systems [1]. It has been seen that there is time deference between the application of a voltage sufficient to cause breakdown and the occurrence of the breakdown itself. This time difference is called statistical time lag. Most of electrical apparatus use air as the insulating medium. Statistical discharge time lag (SDTL) is very important in practical engineering designs of high voltage apparatus and measuring equipment. In insulation coordination especially, the volt-time characteristics of different electrical apparatus are very importance to identify [1]. The requirement for the protective devices is that their volt-time curve must be lie below the withstand level of the protected insulation within the time region in which the protection is intended [2]. If the protective device for instance rod gap, the margin of the two curve must be adequate to allow for the effects of distance, polarity, variation in relative air density, humidity and aging of the

insulation. SDTL test on protective devices subjected to deterioration such as surface erosion in real situation suffer from the difficulty, due to the continuously ongoing development in insulator design and use of new material formulations, the tests would be expensive and long-lasting field investigation that may not always be effective. Thus, simulation testing in field conditions for short periods of time in laboratory scale may provide an alternative possibility for obtaining faster useful results. This paper illustrates such an approach, which is aimed at finding an explanation for PD characteristics change such as SDTL with respect to void surface roughness. In addition, the surface conductivity of the rough and smooth insulation surface has also been measured. An artificial small size of gap has been successfully employed using the CM-II electrode system [3]. In that paper, it was concluded that SDTL has been affected by the roughness of insulation surface in which the void was bounded. However, some new results have been added in the present paper to a give better explanation.

II. EXPERIMENTAL

A. Specimen Preparation

The employed specimen was the CIGRE Method II electrode system. One side of the flat gap was in contact with a metallic electrode, and the other side with insulation. The insulation was a 1 mm thick plate of PMMA, as shown in Figure 1.

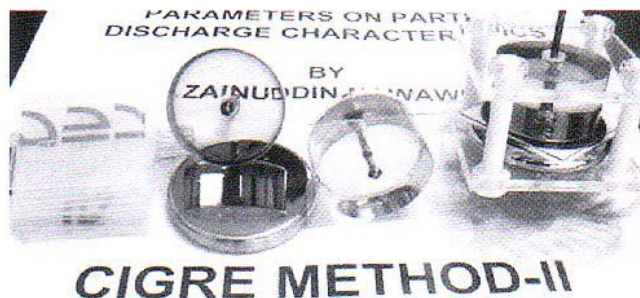


Figure 1. CM-II Specimens

The insulation surface was roughened by plasma. Before plasma treatment, the sample surface was cleaned by ethanol. Then the samples were subjected to arc plasma using a plasma sprayer (Keyence ST-7010). The exposure time was 3, 6, 11, 16 and 21 seconds. Soon after stopping the plasma exposure the sample was assembled into the CM-II electrode system.

B. Experimental Procedures

The voltage was applied to the spherical electrode side of specimen, while the lower was connected to the measurement system. The output of Function Generator was square low voltage, while HV Amplifier was square high voltages. In the measurement system, the discharge current through the specimen was integrated by means of the CR circuit and was digitised using the peak detecting function of the digitising oscilloscope. The SDTL at a 7 kV-step voltage was measured by applying periodical square HV pulses with 10 ms in the pulse width. The interval of pulse application was 20 ms, and was corresponded to 50 Hz, as shown in Figure 2.

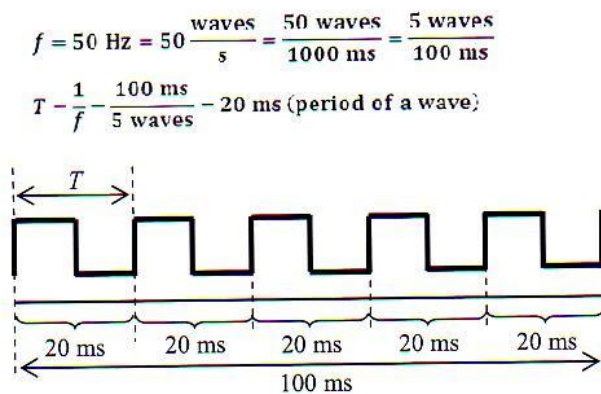


Figure 2. Step voltage applied in this experiment

The measurement is done by applying 64 pulses (64 positive pulses and 64 negative pulses). A wave is consist of 2 pulses i.e. one positive and one negative. In addition, the surface resistivity is also measured using concentric ring probe geometry as shown in Figure 3 [4]. Where Z_1 is outer radius of the center concentric electrode, Z_2 is inner radius of the outer concentric ring electrode. Surface resistivity is related to the surface resistance by a constant that depends on geometry of the electrodes only:

$$\rho_s = R_s \frac{2\pi}{\ln\left(\frac{Z_2}{Z_1}\right)} = \frac{V}{I_s} \cdot k \quad \dots\dots\dots (1)$$

where k is frequency called a geometry coefficient. Then the surface resistivity is measured directly by the resistivity meter, by utilizing various configurations of electrodes. Meter provides a constant voltage V and measures the current I_s flowing between electrodes. The value of resistivity is equal to the value of resistance multiplied by the geometry coefficient. Usually electrodes are especially constructed to simply calculations of surface resistivity and the geometry coefficient

is equal to a simple integer. Most of industrial standards use this simplified approach [5-7]. All experiments were performed at ambient condition.

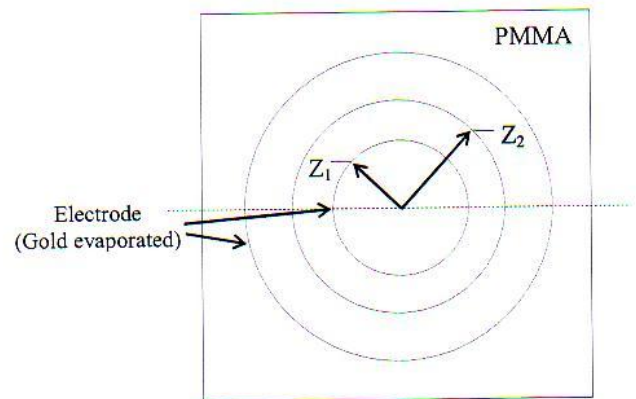


Figure 3. Surface resistance measurement configuration for concentric ring electrodes

The wide application to determine the surface property and the chemical and physical changes that occur during the lifetime of the insulator can only be made after a thorough understanding of the dependence of the surface resistance on all parameters affecting it [8].

III. RESULTS AND DISCUSSION

In order to explain the phenomenon, the SDTL of each level of the exposure time soon after exposed by plasma was investigated. According to the previous result [3], the PD magnitude decreases with the increase of the exposure time; however, the number of PD pulse increases with it, because, in the roughened surface, PD tends to occur at many places somewhat apart from the sphere electrode. In the case of a smooth surface, the PD tends to occur at one place on the specimen surface right under the sphere electrode. It is considered that PD is easily occurs with a higher number of pulses when the surface of a specimen was degraded by plasma. This result is in agreement with Ishida T., Nagao M., and Kosaki, M. [9]. The surface potential distribution of smooth PMMA specimen has only one peak. On the other hand, the roughened one has a couple of peaks. These results show that in the case of roughened surface specimens, the PD occurred at more than one place. It suggests that the PD easily occurs if the dielectric materials were roughened due to intensification of the local field. It is assumed that the surface roughness intensifies the local electric field and increases the supply of the initial electrons. The period between the applied PD inception voltage and the occurrence of PD is called time lag. The SDTL is obtained at first experimentation [3] whose result generates the cumulative probability of time lag. Afterward, it is often converted into Laue plot, i.e., residual probability (L). In this plot, $\log L$ is made the vertical axis, and the time lag is the horizontal axis. Actually, this change has no special meaning except that the parameter of time lag could be shown more clearly than if we used the cumulative probability plot.

I would like to thank to Honda Denshi Corporation, Japan for their technical assistance in which the author could use Plasma Sprayer Keyence ST-7010.

According to that paper [3], the SDTL at 40 % residual probability 60 minutes after exposure by plasma tends to take longer time than that of 20 minutes. The time lag becomes longer probability related to the recovery time of material properties. Collections of ions and electrons remove gradually from the void surface. The ions and electrons are accompanying the exposure should be disappear gradually. It means that, following the time the effect of plasma exposure should be disappear. When the plasma effect was disappearing, it would make possible the discharge occur with longer time lag. This clarified that, for short exposure time the plasma treatment changes the surface properties of material only, not the bulk properties.

However, these results just only clarified that for typical short exposure time of 3 s, plasma treatment changes the surface properties of material only, not damage in deep of bulk specimen. It might be of somewhat speculated, since there was not enough data for 3 s exposure time. That is why in the present paper a new data has been added, as shown in Figure 4 to give more information about recovery times.

Figures 4 shows the typical Laue plots of SDTL for 3 s of exposure time. In this investigation, the recovery times of 20, 60, and 180 minutes were compared. As shown in Figure 4, the 3 s exposed specimen seems to have longer time lags as the increase of recovery times. It is considered that the specimens that already exposed by plasma radiation for 3 s, seems to be recover its insulating property after given recovery times of 20, 60, and 180 minutes compared to that of without recovery time. This result is in agreement with the previous results [3].

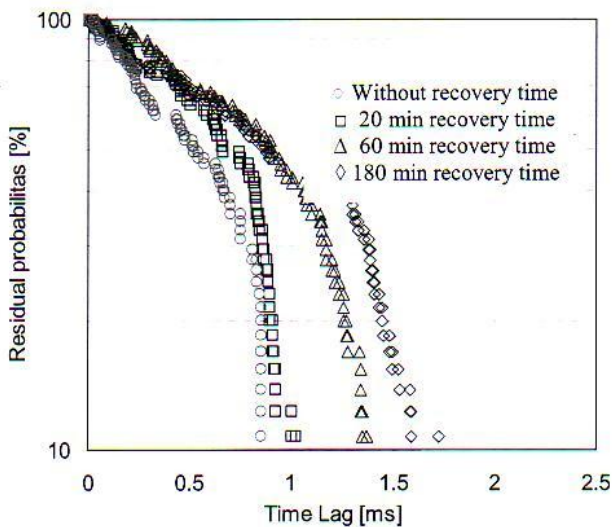


Figure 4. Laue plots of a 3 s plasma exposed specimen after 0, 20, 60, and 180 minutes of recovery times

Another result shows that PD easily occurs with a higher number of pulses when the surface of the specimen was degraded by plasma. This phenomenon may be due to surface change by plasma exposure, including an increase of surface roughness in combination with an increase of surface conductivity, as shown in Figure 5.

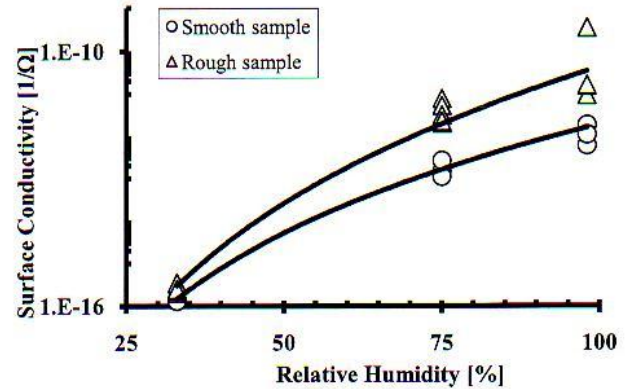


Figure 5. Surface conductivity of smooth and rough surfaces

A rough surface brought by plasma exposure would emphasize the electrical field so that the discharge with longer exposure time would more easily take place. Decrease in SDTL would make possible the PD occurring with a large number of small discharges. To ensure this effect, topographical images and profiles of surface roughness can be traced along the centre line of the eroded specimen by a laser microscope (Keyence VK-8510) to give the erosion profile shown in Figure 6 [10]. To give more detail information, one more image has been added in the Figure. It is recognized that the erosion increases as ageing time increases from 3 s to 21 s. The roughness of 3, 6, and 21 s of exposure time were 1.5, 6.3, and 8 μm , respectively. In addition, many bumps were seen on the material surface. There is data scatter in the short range of position at the edges of micrographs. This is considered to be caused by original surface roughness of the specimens. This scatter had been extremely small compared to the erosion due to plasma exposure, thus it was assumed neglected.

IV. CONCLUSIONS

The SDTL due to deteriorations of high humidity of void space and dielectric surface in which void is bounded has been carried out using the CM II electrode system. The main results are summarised as follows.

- (1) In both polarities, the time lag becomes shorter as the RH increases from 33 % to 98 %.
- (2) The characteristic SDTL of positive polarity was shorter than that of negative polarity. This means that the SDTL with positive polarity was more sensitive to the applied voltage than with negative.

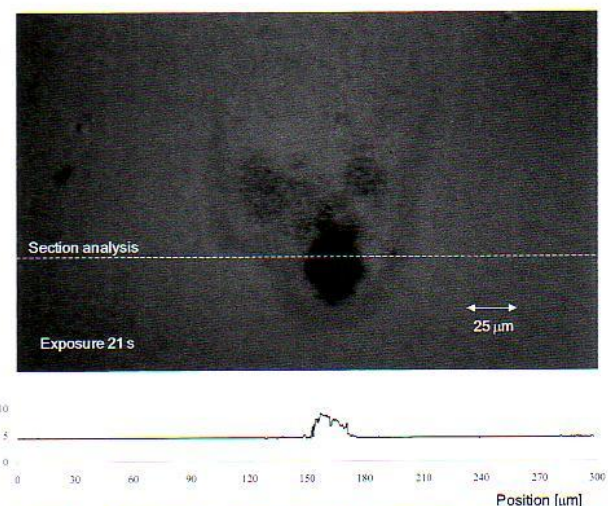
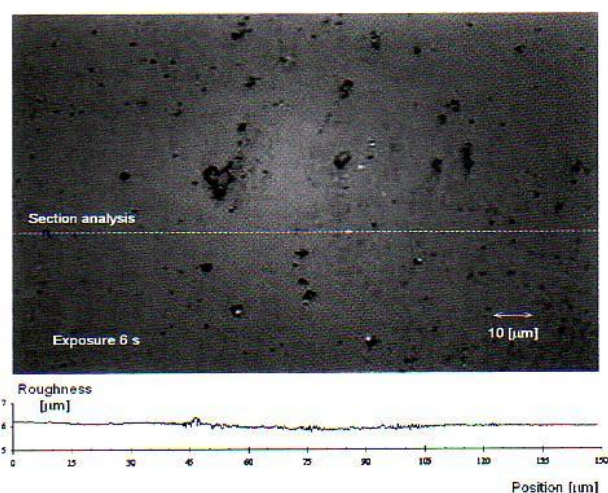
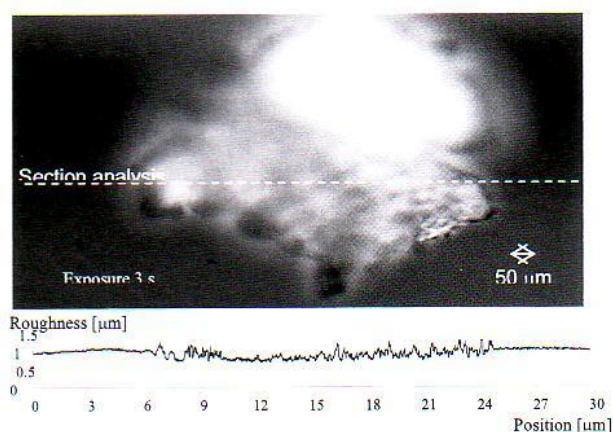


Figure 6. Topographical images and profile of surface roughness of the specimens after being exposed by plasma for 3, 6, and 21 s, respectively.

(3) The SDTL also becomes shorter with increasing plasma irradiation time. It seems the initial electrons are more

easily supplied from a metallic electrode. A rough surface brought about by plasma irradiation would emphasize the electrical field so that the discharge (with a longer irradiation time) would more easily take place. Decrease in SDTL would make possible the PD occurring with large number of small discharges.

(4) In case of SDTL for 3 s exposures, the longer recovery time is given, the higher the specimen to recover its insulating property.

ACKNOWLEDGMENT

I am greatly indebted to Prof. Masayuki Nagao and Prof. Naohiro Hozumi, from Toyohashi University of Technology, Japan, for their suggestions and great supports.

REFERENCES

- [1] Naidu, M. S. and Kamaraju, V. (1996). *High Voltage Engineering*. New York: McGraw-Hill.
- [2] Diesendorf, W. (1974). *Insulation Co-ordination in High-voltage Electric Power Systems*. London: Butterworth.
- [3] Zainuddin Nawawi, Husein Ahmad, Rudi Kurnianto, Naohiro Hozumi and Masayuki Nagao (2011). Statistical Discharge Time Lag in Insulation-Gap-Metal System Attributed to Dielectric Surface Conditioning and Relative Humidity Impact. *International Review of Electrical Engineering*, April 2011.
- [4] William A. Maryniak, Toshio Uehara, and Maciej A. Noras. "Surface Resistivity and Surface Resistance Measurements Using a Concentric Ring Probe Technique", Trek Application Note, Number 1005, TREK INC., Medina, New York, 2003.
- [5] ASTM Standard D 257-99. Standard test method for D-C resistance or conductance of insulating materials, 1999.
- [6] ESD STM 11.11-2001 Standard. Surface resistance measurement of static dissipative planar materials, 2001.
- [7] IEC 61340-5-1 Standard. Electrostatics – part 5-1: Protection of electronic devices from electrostatic phenomena – general requirements, 1998.
- [8] Hackam, R. Outdoor High Voltage Polymeric Insulators. Proceedings of International Symposium on Electrical Insulating Materials, in conjunction with Asian International Conference on Dielectrics and Electrical Insulation and the 30th Symposium on Electrical Insulating Materials. Sept. 27-30, 1998. Toyohashi, Japan. 1–16.
- [9] Ishida T., Nagao M. and Kosaki, M. Effect of Surface Roughness on Potential Distribution of Dielectric Materials after partial Discharge Exposure. *International Symposium on Electrical Insulating materials (ISEIM)*. September 27-30, 1998. Toyohashi, Japan. 669–672.
- [10] Z. Nawawi, H. Ahmad, R. Kurnianto, N. Hozumi and M. Nagao, "Statistical Discharge Time lag in Insulation-gap-Metal System Attributed to Dielectric Surface Conditioning and Relative Humidity Impact," *International Review of Electrical Engineering*, Vol. 6 No. 1 Part B, pp. 445–451.
- [11] Hozumi N., Michiue H., Nagae H., Muramoto, Y. and Nagao, M. Time lag Measurement of Void Discharges for the Clarification of the Factor for Partial Discharges pattern. *Annu. Rept. Conf. Electr. Insul. And Dielectr. Phen. (CEIDP)*. October 15-18, 2000. Victoria, Canada. 717-720.



IEEE CMD2012