

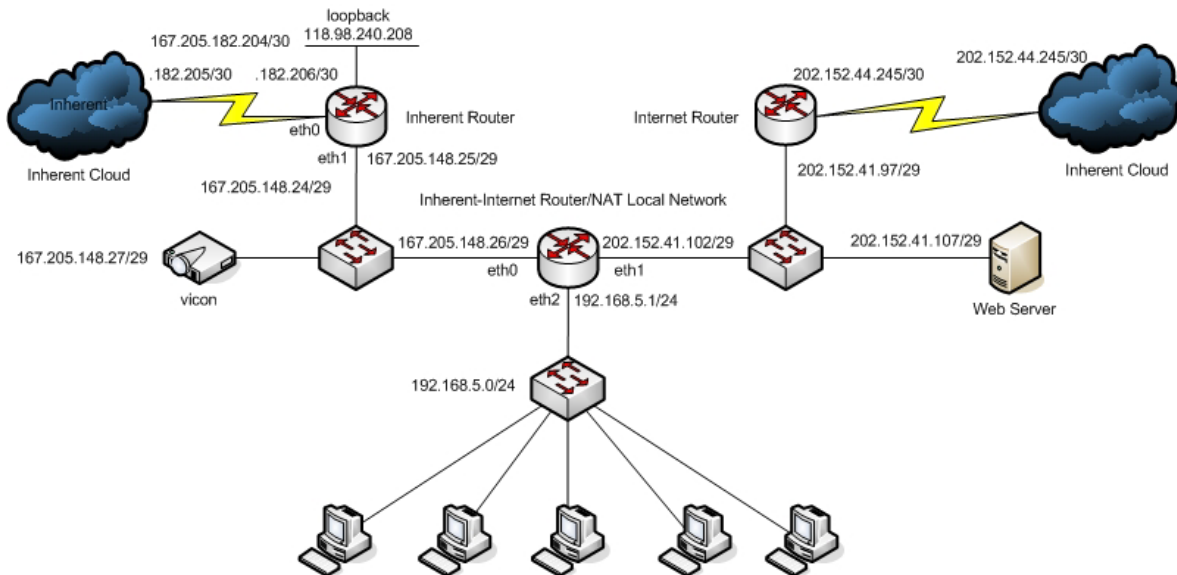
**Integrasi Inherent dan Internet dengan memanfaatkan
routing OSPF dan Default Routing dengan Vyatta (Case
Study AMIK-STMIK Riau)**

Candra Setiawan

Fakultas Ilmu Komputer

Universitas Sriwijaya

Topologi



Pada Router Inherent Perguruan Tinggi

Login ke router

login as: vyatta

vyatta@167.205.148.26's password:

Linux vyatta 2.6.26-1-486-vyatta #1 SMP Fri Feb 27 01:04:20 GMT 2009 i686

Welcome to Vyatta.

This system is open-source software. The exact distribution terms for each module comprising the full system are described in the individual files in /usr/share/doc/*/copyright.

Last login: Mon Dec 7 08:39:26 2009

Masuk ke Configuration Mode

vyatta@vyatta:~\$ configure

[edit]

Beri nama hostname pada router

```
vyatta@vyatta# set system host-name router-inherent
```

```
[edit]
```

Set IP address pada tiap interface

```
vyatta@vyatta# set interfaces ethernet eth0 address 167.205.182.206/30
```

```
[edit]
```

```
vyatta@vyatta# set interfaces ethernet eth1 address 167.205.148.25/29
```

```
[edit]
```

```
vyatta@vyatta# set interfaces loopback lo address 118.98.240.208/32
```

```
[edit]
```

```
vyatta@vyatta# commit
```

```
[edit]
```

```
vyatta@vyatta# save
```

```
Saving configuration to '/opt/vyatta/etc/config/config.boot'...
```

```
Done
```

```
[edit]
```

Set routing protocol OSPF

```
vyatta@vyatta# set protocols ospf area 69 network 167.205.182.204/30
```

```
[edit]
```

```
vyatta@vyatta# set protocols ospf area 69 network 167.205.148.24/29
```

```
[edit]
```

```
vyatta@vyatta# set protocols ospf area 69 network 118.98.240.208/32
```

```
[edit]
```

```
vyatta@vyatta# set protocols ospf log-adjacency-changes
```

```
[edit]
```

```
vyatta@vyatta# set protocols ospf parameters router-id 118.98.240.208
```

```
[edit]
```

```
vyatta@vyatta# commit
```

```
[edit]
```

```
vyatta@vyatta# save
```

```
Saving configuration to '/opt/vyatta/etc/config/config.boot'...
```

```
Done
```

```
[edit]
```

Aktifkan ssh dan https

```
vyatta@vyatta# set service ssh allow-root false
```

```
[edit]
```

```
vyatta@vyatta# set service ssh port 22
```

```
[edit]
```

```
vyatta@vyatta# set service https
```

```
[edit]
```

```
vyatta@vyatta# commit
```

```
Generating a 1024 bit RSA private key
```

```
..++++++
```

```
.....++++++
```

```
writing new private key to '/etc/lighttpd/server.pem'
```

```
—
```

Stopping web server: lighttpd.

Starting web server: lighttpd.

Stopping PAGER server

Starting PAGER server

[edit]

vyatta@vyatta# save

Saving configuration to '/opt/vyatta/etc/config/config.boot'...

Done

[edit]

Pada Router Inherent-Internet

Login pada router

login as: vyatta

vyatta@167.205.148.26's password:

Linux vyatta 2.6.26-1-486-vyatta #1 SMP Fri Feb 27 01:04:20 GMT 2009 i686

Welcome to Vyatta.

This system is open-source software. The exact distribution terms for each module comprising the full system are described in the individual files in /usr/share/doc/*/copyright.

Last login: Mon Dec 7 08:39:26 2009

Masuk ke Configuration Mode

vyatta@vyatta:~\$ configure

[edit]

Beri nama hostname pada router

```
vyatta@vyatta# set system host-name router-inherent-internet
```

```
[edit]
```

Set IP address pada tiap interface

```
vyatta@vyatta# set interfaces ethernet eth0 address 167.205.148.26/29
```

```
[edit]
```

```
vyatta@vyatta# set interfaces ethernet eth1 address 202.152.41.102/29
```

```
[edit]
```

```
vyatta@vyatta# commit
```

```
[edit]
```

```
vyatta@vyatta# save
```

```
Saving configuration to '/opt/vyatta/etc/config/config.boot' ...
```

```
Done
```

```
[edit]
```

Set routing protocol OSPF

```
vyatta@vyatta# set protocols ospf area 69 network 167.205.148.24/29
```

```
[edit]
```

```
vyatta@vyatta# set protocols ospf area 69 network 202.152.41.96/29
```

```
[edit]
```

```
vyatta@vyatta# set protocols ospf log-adjacency-changes
```

```
[edit]
```

```
vyatta@vyatta# commit
```

```
[edit]
```

```
vyatta@vyatta# save
```

```
Saving configuration to '/opt/vyatta/etc/config/config.boot'...
```

```
Done
```

```
[edit]
```

Aktifkan ssh dan https

```
vyatta@vyatta# set service ssh allow-root false
```

```
[edit]
```

```
vyatta@vyatta# set service ssh port 22
```

```
[edit]
```

```
vyatta@vyatta# set service https
```

```
[edit]
```

```
vyatta@vyatta# commit
```

```
Generating a 1024 bit RSA private key
```

```
..++++++
```

```
.....++++++
```

```
writing new private key to '/etc/lighttpd/server.pem'
```

```
—
```

```
Stopping web server: lighttpd.
```

```
Starting web server: lighttpd.
```

```
Stopping PAGER server
```

```
Starting PAGER server
```

```
[edit]
```

```
vyatta@vyatta# save
```

Saving configuration to '/opt/vyatta/etc/config/config.boot' ...

Done

[edit]

Buat default routing menuju internet

vyatta@vyatta# set protocols static route 0.0.0.0/0 next-hop 202.152.41.97

[edit]

vyatta@vyatta# commit

[edit]

vyatta@vyatta# save

Saving configuration to '/opt/vyatta/etc/config/config.boot' ...

Done

[edit]

Buat NAT menuju ke Inherent dan ke internet

vyatta@vyatta# set service nat rule 1 description NAT-Inherent

[edit]

vyatta@vyatta# set service nat rule 1 outbound-interface eth0

[edit]

vyatta@vyatta# set service nat rule 1 type masquerade

[edit]

vyatta@vyatta# commit

[edit]

vyatta@vyatta# save

Saving configuration to '/opt/vyatta/etc/config/config.boot' ...

Done

[edit]

```
vyatta@vyatta# set service nat rule 2 description NAT-to-Internet
```

[edit]

```
vyatta@vyatta# set service nat rule 2 outbound-interface eth1
```

[edit]

```
vyatta@vyatta# set service nat rule 2 type masquerade
```

[edit]

```
vyatta@vyatta# commit
```

[edit]

```
vyatta@vyatta# save
```

Saving configuration to '/opt/vyatta/etc/config/config.boot' ...

Done

[edit]

```
vyatta@vyatta#
```

Pada web server kita ubah gateway menuju ke IP 202.152.41.102/29 sehingga server kita tetap mempunyai satu gateway, adapun routing menuju ke internet akan di belokkan router kita menuju IP 202.152.41.97/29. Selamat mencoba :)..