

Improving Retina Image Quality Using the Contrast Stretching, Histogram Equalization, and CLAHE Methods with Median Filters

by Erwin Erwin

Submission date: 19-Nov-2019 07:15AM (UTC+0700)

Submission ID: 1216668818

File name: JURNAL_IJISA-DWI_RATNA_-_English.docx (707.61K)

Word count: 3619

Character count: 18574

Improving Retina Image Quality Using the Contrast Stretching, Histogram Equalization, and CLAHE Methods with Median Filters

Erwin

Computer Engineering, Sriwijaya University, Indralaya, Indonesia
 Email: erwin@unsri.ac.id

Dwi Ratna Ningsih

Computer Engineering, Sriwijaya University, Indralaya, Indonesia
 Email: dwim20@gmail.com

Abstract—This paper performs three different contrast testing methods, namely contrast stretching, histogram equalization, and CLAHE using a median filter. Poor quality images will be corrected and performed with a median filter removal filter. STARE dataset images that use 20 images with different contrast values for each image. For this reason, evaluating the results of the three parameters tested are; MSE and PSNR. With the gray level scale image and contrast stretching which stretches the pixel value by stretching the stretchlim technique, the MSE results are 9.14778 and PSNR is 42.1356 dB. And the HE method and median filter with the results of the average value of MSE is 18.668663 and PSNR is 41.333973 dB. Whereas for CLAHE and median filters the average yield of MSE is 28.42135 and PSNR is 35.2997 dB. From the test results, it can be seen that the proposed method has MSE and PSNR values.

Index Terms—median filter, STARE, contrast stretching, CLAHE, HE, MSE, PSNR.

I. INTRODUCTION

Enhancement of the quality of retinal images that have both noise and noise is the first step in image processing to help improve the accuracy of the results for image segmentation and extraction. Images store a lot of information, but often there is a decrease in quality or image defects. So that images that have experienced interference or noise are easily interpreted, then the image can be manipulated into other images of better quality using image processing techniques or methods[1]. Retinal eye images can provide information about pathological changes caused due to disease[2]. Processing medical image of the retina in the eye with disease information by increasing contrast quality and eliminating noise that can damage the image so that sharpness can be improved and

can facilitate segmentation or extraction of retinal images [3]. From an image, sharp lines can be sharpened to increase. Poor and poor image quality cannot be interpreted directly by the human eye, so we use methods to improve the quality of contrast stretching images and median filters[4]. One type of image modeling used for digital processing, one of which has good results is RGB. To find out the color frequency in a digital image a histogram graph is used[5]. In the image, there are bright and dark noise in the random distribution in the image which can affect the visual effect of the image as well as the information in the image[6]. Then the method to improve the image quality of the median filter and contrast stretching is applied. It is a method that will increase contrast by getting new images as well as new contrast.

In this pre-processing stage, two contrast methods are used namely contrast stretching and histogram equalization and CLAHE. Increase contrast by stretching the existing value in the image at a certain intensity. Contrast stretching will stretch, increase and decrease the contrast of the image. And the median filter as a filter for image enhancement that will filter out noise or noise. With this increase in image quality, it can be seen which method is better in improving it. With the parameters of PSNR and MSE to see the image quality and whether or not accurate.

II. RELATED WORK

This previous study[7] used multiscale for enhancement and also applied a median filter method to reduce video noise and MSRCR to regulate how bright the video as a dataset was used. By using PSNR can be calculated on average by time parameters. The result obtained is a PSNR value of 19.6088 dB which results are still low.

In previous studies[8] the original retinal image will be processed with a normalized convolution algorithm using domain transformation and obtain an enhanced image. With the median filter method using the STARE database to evaluate the results of image enhancement. The result of this method is that it can improve the quality of the retinal image is still unclear.

From previous studies[9] using edge detection and contrast enhancement to eliminate noise. This research focuses on stretching contrast and image enhancement. Use a histogram to verify the results of image enhancement and contrast stretching. Which increased quality is not optimal.

Previous studies[10] improved the perception of information that exists in the original image, increasing structural features for good image quality. With morphological and merging regions which will then be continued by stretching the contrast separately. Linear stretching is used to improve the texture features of objects, can suppress noise but still cannot maintain the brightness of the entire image.

Previous studies[11] increased contrast with morphological methods of upper and lower operations. Matrix contrast at edges extracts the enhanced image. Counting each region with morphological open operations, everything connected with pixels under 40 will be eliminated. But the difficulty in removing noise.

Previous studies[12] used methods to improve blood vessels. A multi-scale top-hat transformation extracts the original image into bright and dim image features. Then it is enhanced by adding an image feature that has a gap and a gaussian curve histogram is mounted for linear stretching.

III. METHOD AND RESULT

This paper uses a database of stare in which the initial stage is to input a retinal image and then the image is given three RGB colors with an intensity of 8-bit depth. Separate each RGB color into three channels. From RGB, the image is grayed with pixel intensity. Followed by inputting salt and pepper noise on grayscale with a gray image that will be filtered with the median filter, then increasing counter with contrast stretching, can be seen in the illustration in figure 1.

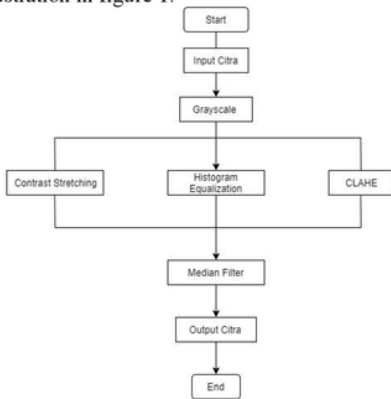


Figure 1. Method Diagram Block

At this stage of the process the first is to input the retinal image using the STARE database, after the median filter which will then be contrasted with contrast stretching which is the methods in step figure1, as follows:

A. Grayscale

Gray pixel intensity, with values ranging from 0 to 255 expresses the gray range of the image. With this range between the gradations of black and white images. Grayscale is a color that is located between black and white. On this grayscale, the image is first increased in complexity[13].

B. Median Filter

It is a non-linear method to filter or reduce noise in the image so that image information is maintained. Values on images will be replaced or manipulated by making values as medians. With the gray level, the value has been replaced by the median then stored instead of the noise value[7]. The max is the maximum, the min is the minimum value, and the average is the gray level. And $y(m, n)$ is the center of manipulation of the median filter[14].

The median filter will see the pixel value of its neighbor and will match the pixel value that will be represented by the neighbor's pixel value. The pixel value will be replaced at the middle value with a count of around neighbors. When the value is even on the surrounding pixel, the middle value will be used with an average of two middle values[15].

$$y[m, n] = \text{median} \{x[i, j], (i, j) \in \omega\} \quad (1)$$

C. Histogram Equalization (HE)

It is a histogram equalization in which the gray distribution of values is made flat. HE will manipulate the respective image pixels for increased contrast. The image gets a flattened histogram distribution function. The intensity and scale are obtained as output from the histogram equalization. The purpose of this HE is to make the distribution of the histogram evenly distributed so that the pixel value at the gray level will have a relatively identical value or the same. HE will map input images with unequal intensity levels and to output images with the same level[16].

D. Contrast Stretching (CS)

It is a method of stretching the contrast, with the intensity value contained in the image expanded with a dynamic range. The pixel value of the image can be applied with linear scaling. To normalize the image or contrast stretching the image it is necessary to determine the minimum and maximum values of the image. These minimum and maximum values will determine the boundary of the image. In this proposed method an image with an 8-bit gray level is the lower limit and values 0 to 255 as the upper limit. Citra has

three contrasting groups, namely; low contrast, normal contrast, and high contrast[17].

$$g(x, y) = \frac{f(x, y) - \min}{\max - \min} \times 255 \quad (2)$$

Where $g(x, y)$ represents the output and $f(x, y)$ represents the input. Image intensity values with 0 as the lowest value and 255 as the highest value[18]. By using stretchlim as a determinant of the minimum and maximum values. The value of $g(x, y)$ as a new image obtained from the image value (x, y) will be subtracted by the maximum value and divided by the results of the minimum and maximum reduction. The results will be multiplied by 255 as the pixel value [16].

E. CLAHE (Contrast Limited Adaptive Histogram Equalization)

CLAHE is a contrast enhancement technique which is the development of HE and AHE from which surely this CLAHE is better than HE and AHE. In this CLAHE images will be divided into tiles or smaller areas. CLAHE is also a development of the AHE method that has its components changed. In this CLAHE all pixels adjacent to all functions will be converted[15]. This CLAHE is different from AHE because CLAHE limits the contrast, uses the maximum value on the clip and returns it to the gray value [19].

F. Mean Square Error (MSE) and PSNR (Peak Signal to Noise Ratio)

The parameters used as an evaluation of the results of improving image quality. This parameter will compare the original image with the resulting image, the equation used is as follows[20] :

$$MSE = \frac{1}{XY} \sum_{y=0}^{Y-1} \sum_{x=0}^{X-1} (\hat{y}(i, j) - y(i, j))^2 \quad (3)$$

$$PSNR = 10 \log_{10} \frac{S^2}{MSE} \quad (4)$$

With the value $S = 255$ for 8-bit images, the higher the PSNR value generated, the better. While the closer the value to 0, the better the MSE value.

G. Result Enhancement

MATLAB R2018b was used in the course of this research, which is managed by a laptop device with an AMD Quad-Core A10-9620P processor, up to 3.4GHz with 4GB of RAM. By using the STARE database taken, there were 20 images. Which uses JPG format. The image

used is a dataset from STARE (Structured Analysis of the Retina).

Inputting the image with the original image in the first stage can be seen in figure 1. The median filter will manipulate the image to get better image quality improvements. Then the shortcomings of the median filter will be followed by contrast stretching which will increase the contrast with level to gray.

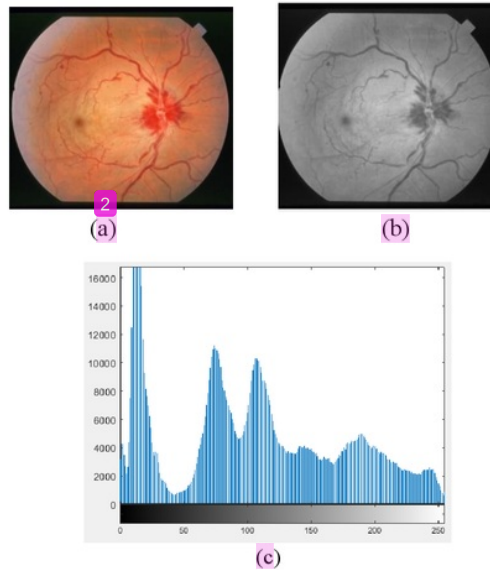


Figure 2: a. original image
b. Grayscale
c. Original image histogram

Figure 2 uses im0005.jpg which is in part (a) the original image from the STARE database. Based on Figure 2 (b) is the original input image of the dataset that is made grayscale or to a grayscale. Figure 2 (c) is a histogram of the original image that has not been processed. By determining the lower limit and the pixel value, the image is normalized. Suppose that a is the lower limit and b is the upper limit, then find the highest and lowest pixels of the image. With c and d , take the lowest and highest pixel values, and scale the pixels by the following equation:

$$P_{out} = (P_{in} - c) \frac{(b-a)}{(d-c)} + a \quad (5)$$

Values c and d can affect the output value especially if the value is too high or low.

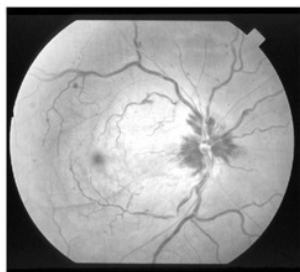


Figure 3. Contrast Stretching Using Stretchlim Citra STARE im0005.jpg

Figure.3 is the result of the graying image normalized by contrast stretching and stretching methods. Stretching will normalize the image by looking for the minimum and maximum values first. Stretchlim will look for maximum and minimum values of gray-level images.

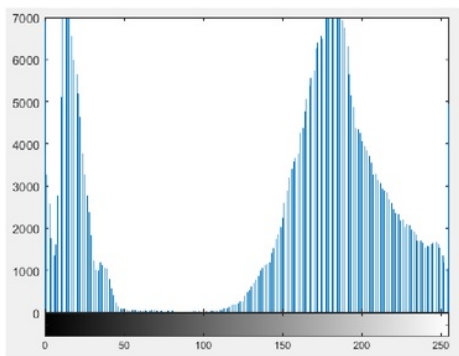


Figure 4. Histogram Contrast Stretching Using Stretchlim imagery STARE im0005.jpg

Figure 4 displays the histogram of contrast stretching with the results seen from the histogram that the image is stretching. By stretching the intensity value of the image can be seen if the counter is too far to the right with a pixel value above 135 then the image is included as bright. Conversely, if the cons on the histogram are more left or under 50 pixels based on the histogram, the image is dark. In the histogram, the image is more dominant towards the light.

Figure 5 is the image of im005.jpg which has done even distribution of the histogram with HE. The image in a gray level that is made flat or identical. In the image visible difference from the results of contrast stretching images and median filters that blood vessels are more visible in the HE method and median filter.



Figure 5. HE citra im0005.jpg

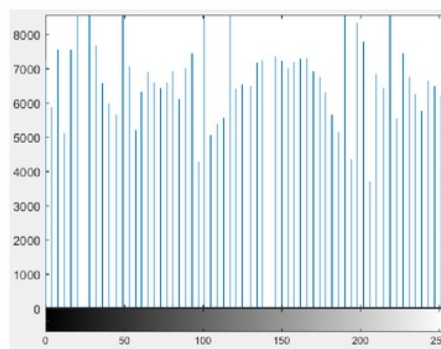


Figure 6. Histogram with HE image im0005.jpg

Figure 6 is a histogram of the im005.jpg image leveled by the HE method. From the original image histogram, the difference between the histogram results of HE which is more even and equal. With a range of 0 to 255 and the grayscale histogram is made uniform and obtained evenly distributed.

The results of CLAHE and median filters can be seen in Figure 7 where all pixels are converted, and the contrast value is limited to the maximum value. Seen in the image that this CLAHE method can highlight the small blood vessels of the retina of the eye compared to contrast stretching and HE.



Figure 7. CLAHE Citra im0005.jpg

This paper uses three parameters, namely MSE and PNSR to assess the results of the method being tested. By using 20 images from the STARE dataset with different

contrast and with the median filter as a filtering method. The testing method was carried out on a 4GB ASUS X555Q laptop with the MATLAB R2018b application. The results of MSE can be seen in table 1. And the results of PNSR can be seen in table 2.

Table 1. The MSE value of the method is tested with different contrast

Images	CS + Median Filter	HE +Median Filter	CLAHE + Filter
'im0001.jpg'	0.3710	2.5792	22.5689
'im0002.jpg'	0.3085	0.5398	23.0370
'im0003.jpg'	0.5016	45.2423	43.9058
'im0004.jpg'	0.2940	0.5274	6.5633
'im0005.jpg'	3.6597	53.0682	41.7143
'im0006.jpg'	0.3355	5.1869	10.5018
'im0007.jpg'	7.1010	2.2606	9.9203
'im0008.jpg'	0.3657	0.3966	24.6333
'im0009.jpg'	8.4669	1.2279	5.0054
'im0010.jpg'	15.9832	2.3104	28.0006
'im0011.jpg'	10.9878	1.5428	6.6433
'im0012.jpg'	6.7726	68894	27.2922
'im0013.jpg'	6.0081	1.4002	0.8432
'im0014.jpg'	14.2650	11.8886	34.1695
'im0015.jpg'	9.4352	2.6716	20.2494
'im0016.jpg'	14.0711	8.6744	20.9003
'im0017.jpg'	21.9889	2.4932	48.1514
'im0018.jpg'	24.5662	119.9510	81.3039
'im0019.jpg'	21.4990	86.8360	77.2811
'im0020.jpg'	15.9745	18.0460	35.7419
Average	9.14778	18.68663	28.42135

Table 1 is an MSE of 20 STARE images that use the median filter than with different contrasts, namely, contrast stretching, histogram equalization and CLAHE. From table 1 it can be seen that the results of MSE with contrast stretching and median filter that is with an average of 9.14778 are classified as good because the value is below 30. For HE and median filter that is obtained an average of 18.68663 with the results of CLAHE and median filter an average of 28.42135. From the method tested in this paper, the best MSE value is 9.14778.

In table 2 is the PNSR value of 20 STARE images that use different contrast. It can be seen in Table 2 that the PSNR value is contrast stretching with an average median filter of 42.1305. HE and median filter with an average value of 41.333973 and for CLAHE with a median filter having an average value of 35.2997. From these results, it can be said that the best PNSR value on testing the method with different contrast is 42,1356 which is the result of the contrast stretching method with a median filter.

Table 2. The PSNR value of the method was tested with different contrast

Images	CS + Median Filter	HE +Median Filter	CLAHE + Filter
'im0001.jpg'	52.4708	44.0499	34.6297
'im0002.jpg'	53.2724	50.8424	34.5405
'im0003.jpg'	51.1611	31.6094	31.7396
'im0004.jpg'	53.4815	50.9434	39.9936
'im0005.jpg'	42.5304	30.9165	31.9620
'im0006.jpg'	52.9079	41.0157	37.9521
'im0007.jpg'	39.6516	44.6226	38.1996
'im0008.jpg'	52.5340	52.1817	34.2496
'im0009.jpg'	38.8876	47.2733	41.1705
'im0010.jpg'	36.1281	44.5280	33.6931
'im0011.jpg'	37.7557	46.2817	39.9410
'im0012.jpg'	39.8573	39.7830	33.8044
'im0013.jpg'	40.3774	46.7030	48.9054
'im0014.jpg'	36.6221	37.4135	32.8284
'im0015.jpg'	38.4173	43.8972	35.1007
'im0016.jpg'	36.6815	38.7824	34.9633
'im0017.jpg'	34.7428	44.1972	31.3387
'im0018.jpg'	34.2614	27.3748	29.0637
'im0019.jpg'	34.8406	28.7778	29.2841
'im0020.jpg'	36.1305	35.6010	32.6330
Average	42.1356	41.3973	35.2997

Based on these three parameters, it can be seen in Table 1 and Table 2 that the values with different original image contrasts can affect the results of image improvement. Thus the method proposed in this paper can improve image quality based on the results of MSE and PSNR.

Table 5 Comparison of MSE and PSNR values in the method tested with the previous method to improve image quality

Method	MSE	PSNR
Proposed Method	9.14778	42.1356
Erwin et al, 2017[21]	11,203.08	7.64
Pinki et al, 2016[22]	49.0276	31.2264

Based on table 3 it can be seen that the method being tested is superior to the previous method, with the results of MSE and PSNR being better. With the value of MSE 9.14778 and PSNR 42.1356 dB, which is the result of the proposed method is better than the previous method..

VI. CONCLUSION

Based on the method proposed in this paper using the STARE dataset by taking 20 retinal images in JPG

format. Of the 20 images, image quality improvements were made using three contrasts, contrast stretching, HE and CLAHE filtered using a median filter. With the first comparison using the proposed method contrast stretching and median filter. The technique of taking maximum and minimum values using stretchlim which was previously the image in grayish conditions. HE and median filters with equalization techniques on histograms whose pixel values are at 0 to 255. The third is CLAHE and median filters which technically limit the pixel values to the boundary regions. The method proposed in this paper can improve image quality based on MSE and PSNR results.

REFERENCES

- [1] M. Rajaram, "A novel approach for contrast enhancement based on histogram equalization followed by median filter A NOVEL APPROACH FOR CONTRAST ENHANCEMENT BASED ON HISTOGRAM EQUALIZATION FOLLOWED BY MEDIAN FILTER," no. September 2009, 2014.
- [2] V. M. Saffarzadeh, A. Osareh, and B. Shadgar, "Vessel Segmentation in Retinal Images Using Multi - scale Line Operator and K - Means Clustering," no. November 2017, 2014.
- [3] H. Aguirre-ramos, J. G. Avina-cervantes, I. Cruz-aceves, J. Ruiz-pinales, and S. Ledesma, "Blood vessel segmentation in retinal fundus images using

- Gabor filters , fractional derivatives , and Expectation Maximization,” *Appl. Math. Comput.*, vol. 339, pp. 568–587, 2018.
- [4] F. Farokhian and H. Demirel, “Blood Vessels Detection and SeIMAGE ENHANCEMENT USING CONTRAST STRETCHING ON RGB AND IHS DIGITAL IMAGE gmentation in Retina using Gabor Filters,” pp. 104–108, 2013.
- [5] K. Firdausy, T. Sutikno, and E. Prasetyo, “IMAGE ENHANCEMENT USING CONTRAST STRETCHING ON RGB AND IHS DIGITAL IMAGE,” no. 1, pp. 45–50.
- [6] Y. Zhu and C. Huang, “An Improved Median Filtering Algorithm for Image Noise,” *Phys. Procedia*, vol. 25, pp. 609–616, 2012.
- [7] A. Supriyanto, G. Hermawan, and J. D. Bandung, “Image Enhancement Dengan Metode Median Filter Dan Multiscale Retinex With Color Restoration Pada Dataset Video.”
- [8] F. A. Jassim and F. H. Altaani, “Hybridization of Otsu Method and Median Filter for Color Image Segmentation,” no. 2, pp. 69–74, 2013.
- [9] P. Garhwal and P. Garhwal, “A Hybrid Approach to Image Enhancement using Contrast Stretching on Image Sharpening and the analysis of various cases arising using Histogram,” no. 3, 2014.
- [10] B. Xu, Y. Zhuang, H. Tang, and L. Zhang, “Object-Based Multilevel Contrast Stretching Method for Image Enhancement,” vol. 56, no. 3, pp. 1746–1754, 2010.
- [11] R. K. B, H. Kabir, and S. Salekin, “Contrast Enhancement by Top-Hat and Bottom-Hat Transform with Optimal Structuring Element: Application to Retinal,” pp. 533–540, 2017.
- [12] M. Liao, Y. Zhao, X. Wang, and P. Dai, “Optics & Laser Technology Retinal vessel enhancement based on multi-scale top-hat transformation and histogram fitting stretching,” *Opt. Laser Technol.*, vol. 58, pp. 56–62, 2014.
- [13] P. P. Acharjya and S. Mukherjee, “Digital Image Segmentation Using Median Filtering and Morphological Approach,” vol. 4, no. 1, pp. 552–557, 2014.
- [14] K. B. Khan, A. A. Khaliq, A. Jalil, and M. Shahid, “A robust technique based on VLM and Frangi filter for retinal vessel extraction and denoising,” *PLoS One*, vol. 13, no. 2, pp. 1–22, 2018.
- [15] A. M. Reza, “Realization of the contrast limited adaptive histogram equalization (CLAHE) for real-time image enhancement,” *J. VLSI Signal Process. Syst. Signal Image. Video Technol.*, vol. 38, no. 1, pp. 35–44, 2004.
- [16] G. B. Iwasokun and O. C. Akinyokun, “Image Enhancement Methods: A Review SCIENCEDOMAIN international Image Enhancement Methods: A Review,” no. January 2014, 2016.
- [17] S. Anitha and V. Radha, “Contrast Stretching and Non Linear Median Filters for Fabric Inspection,” vol. 2, no. 2, pp. 836–839, 2011.
- [18] S. S. Al-amri, N. V Kalyankar, and S. D. Khamitkar, “Linear and Non-linear Contrast Enhancement Image,” vol. 10, no. 2, pp. 139–143, 2010.
- [19] J. Dash, “Retinal Blood Vessel Segmentation Using Otsu Thresholding With Principal Component Analysis,” *2018 2nd Int. Conf. Inven. Syst. Control*, no. Icisc, pp. 933–937, 2018.
- [20] S. Shrestha, “I MAGE D ENOISING U SING N EW A DAPTIVE,” vol. 5, no. 4, pp. 1–13, 2014.
- [21] A. Nevriyanto and A. H. Equalization, “Enhancement , and Standard Median Filter (Noise Removal) with Pixel-Based and Human Visual System-Based Measurements,” vol. 1, no. 1, pp. 114–119, 2017.
- [22] R. Mehra and M. E. Scholar, “Estimation of the Image Quality under Different Distortions,” vol. 5, no. 17291, pp. 17291–17296, 2016.

Improving Retina Image Quality Using the Contrast Stretching, Histogram Equalization, and CLAHE Methods with Median Filters

ORIGINALITY REPORT

7%

SIMILARITY INDEX

3%

INTERNET SOURCES

6%

PUBLICATIONS

4%

STUDENT PAPERS

PRIMARY SOURCES

- 1** Submitted to University of Computer Studies 2%
Student Paper
- 2** "Proceedings of the International Conference on ISMAC in Computational Vision and Bio-Engineering 2018 (ISMAC-CVB)", Springer Science and Business Media LLC, 2019 2%
Publication
- 3** Fadzil M. Hani, Ahmad, and Hanung Adi Nugroho. "Retinal vasculature enhancement using independent component analysis", Journal of Biomedical Science and Engineering, 2009. 1%
Publication
- 4** www.mecs-press.org 1%
Internet Source
- 5** Submitted to University of Central Lancashire 1%
Student Paper
- 6** Suprijanto, , Gianto, E. Juliastuti, Azhari, and Lusi Epsilawati. "Image contrast enhancement for film-based dental panoramic radiography", 1%

2012 International Conference on System Engineering and Technology (ICSET), 2012.

Publication

Exclude quotes On

Exclude matches < 1%

Exclude bibliography On