



Dinar Dwianugerah <dinar.dputranto@gmail.com>

Decision for manuscript number JEENG-01455-2019-01

1 message

Journal of Ecological Engineering <kontakt@editorialsystem.com>

Tue, Jan 7, 2020 at 8:54 PM

Reply-To: "gabriel@borowski.net.pl" <gabriel@borowski.net.pl>

To: Dinar PutrantoDinar <dinar.dputranto@gmail.com>

January 07, 2020

JEENG-01455-2019-01

Effect of Land Use Changes of Upstream Komerling Sub Watershed on Declining Water Availability

Dear Dr. Dinar Putranto,

I am pleased to inform you that your manuscript, has been accepted with minor revisions after a few typos and other details, detailed by Editors.

Proof version we will send to you soon, and the last correction will be possible.

Thank you for submitting your work to us.

Kindest regards,
Gabriel Borowski
Editor-in-Chief
Journal of Ecological Engineering

Your manuscript has been analyzed by a web-based anti-plagiarism system (iThenticate).

Manuscript evaluation is available here:

<https://www.editorialsystem.com/jeeng/article/178495/view/#showDecision>



Dinar Dwianugerah <dinar.dputranto@gmail.com>

JEE vol. 21, iss.2, 2020

2 messages

Journal of Ecological Engineering <office@jeeng.net>
To: dinar.dputranto@gmail.com


Sun, Jan 26, 2020 at 3:09 PM

Dear Author,

I am sending a proof version of the article for publication in the Journal of Ecological Engineering, vol. 21, iss. 2, 2020.
Please read the final version of the work, and if need add your comments using the attached PDF files.
Please reply as quick as posible.

Best Regards,
Gabriel Borowski

Editor-in Chief
Journal of Ecological Engineering
www.jeeng.net

 **Putranto.pdf**
2099K

Dinar Dwianugerah <dinar.dputranto@gmail.com>
To: Journal of Ecological Engineering <office@jeeng.net>

Sun, Jan 26, 2020 at 8:34 PM

Thank you, for the confirmation that was sent to me.
Quite appropriate, from us there is no correction or addition or change from the paper

Dinar DA Putranto
University of Sriwijaya, South Sumatera, Indonesia
[Quoted text hidden]



Dinar Dwianugerah <dinar.dputranto@gmail.com>

Publishing fee has been received

1 message

Journal of Ecological Engineering <kontakt@editorialsystem.com>

Wed, Jan 8, 2020 at 11:22 AM

Reply-To: "gabriel@borowski.net.pl" <gabriel@borowski.net.pl>

To: Dinar PutrantoDinar <dinar.dputranto@gmail.com>

Dear Dr. Dinar PutrantoDinar,

We would like to inform you that the publishing fee for the manuscript: Effect of Land Use Changes of Upstream Komerling Sub Watershed on Declining Water Availability (JEENG-01455-2019-01) has been received.

Thank you for your payment!

Editorial Office of Journal of Ecological Engineering



SJR

Scimago Journal & Country Rank

Enter Journal Title, ISSN or Publisher Name

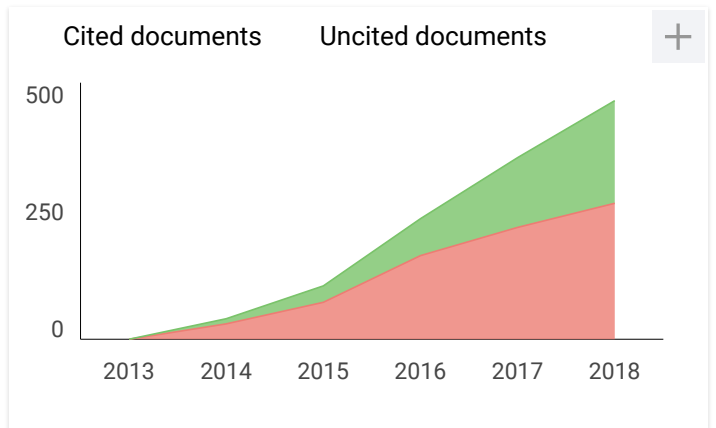
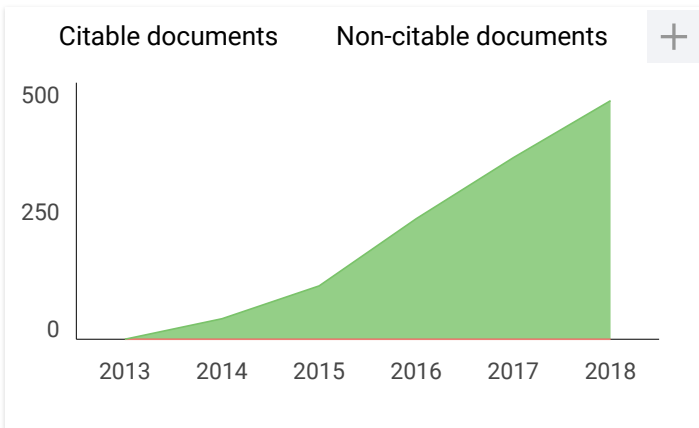
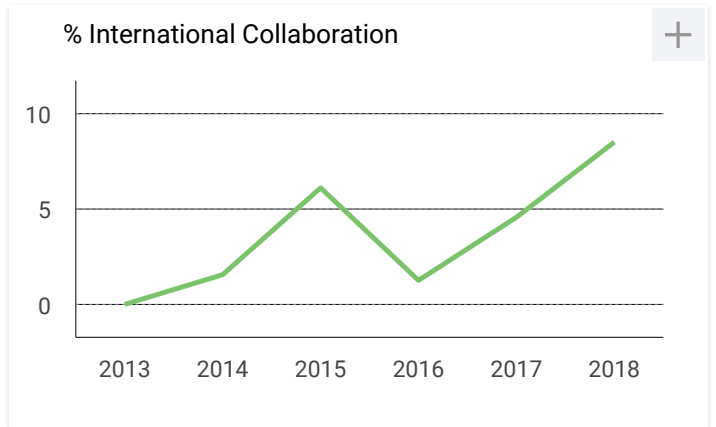
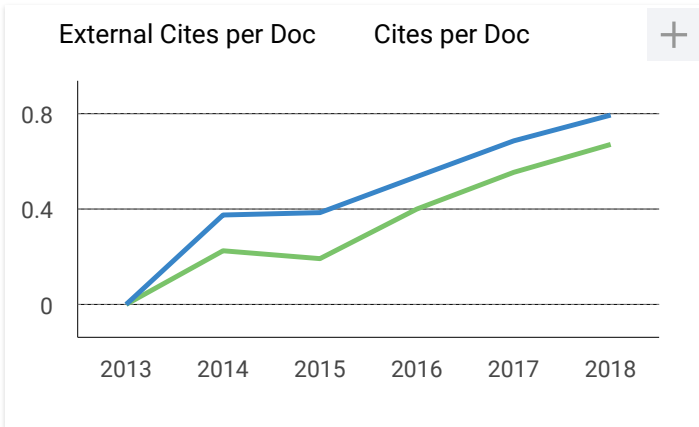
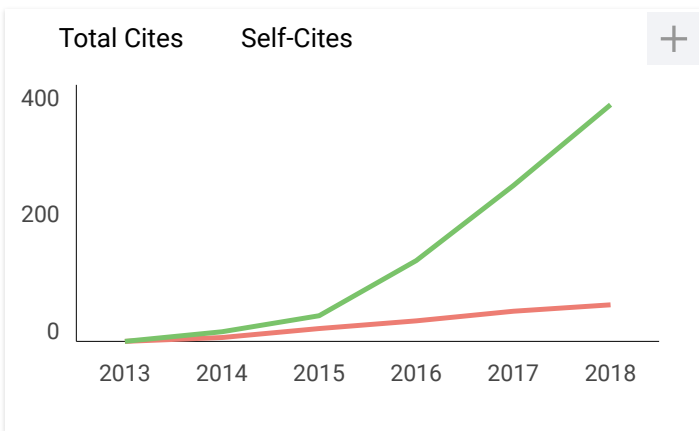
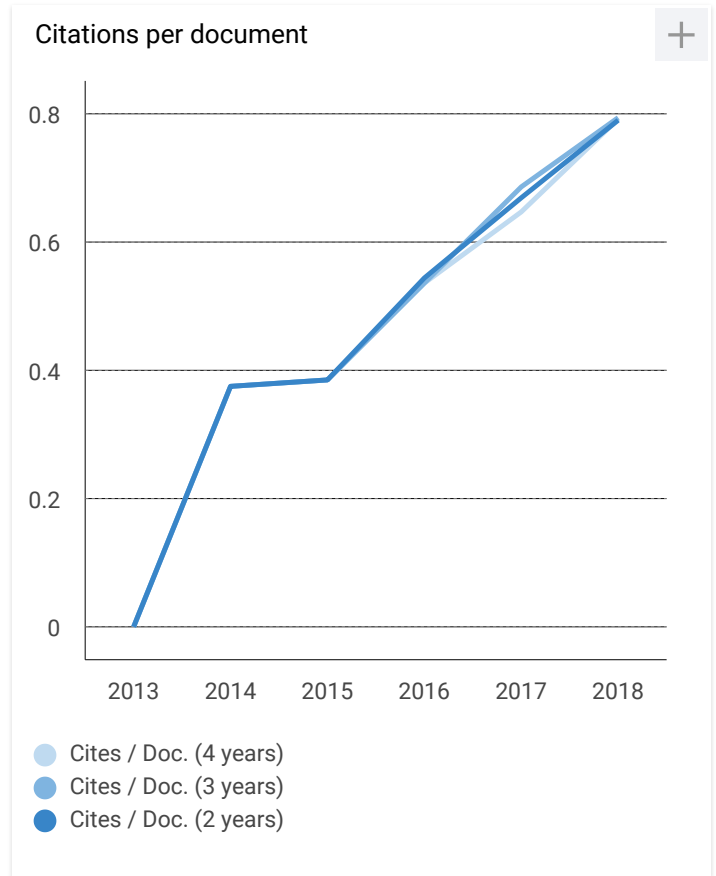
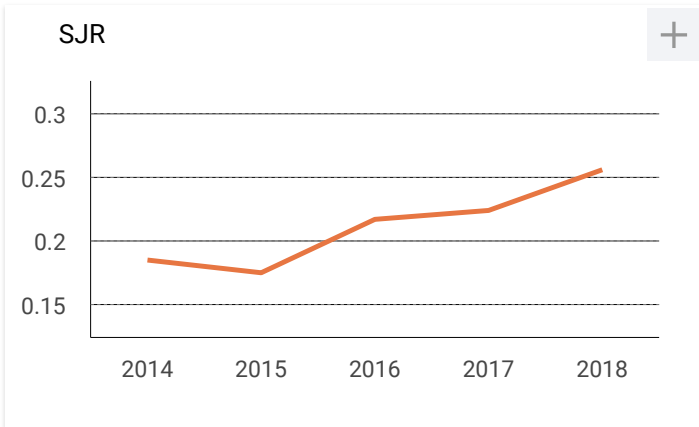
[Home](#)[Journal Rankings](#)[Country Rankings](#)[Viz Tools](#)[Help](#)[About Us](#)

Journal of Ecological Engineering

Country	Poland - SIR Ranking of Poland	<h1>10</h1>
Subject Area and Category	Agricultural and Biological Sciences Ecology, Evolution, Behavior and Systematics Environmental Science Environmental Science (miscellaneous)	
Publisher	Polskie Towarzystwo Inzynierii Ekologicznej	H Index
Publication type	Journals	
ISSN	22998993	
Coverage	2013-ongoing	
Scope	- Industrial and municipal waste management - Pro-ecological technologies and products - Energy-saving technologies - Environmental landscaping - Environmental monitoring - Climate change in the environment - Sustainable development - Processing and usage of mineral resources - Recovery of valuable materials and fuels - Surface water and groundwater management - Water and wastewater treatment - Smog and air pollution prevention - Protection and reclamation of soils - Reclamation and revitalization of degraded areas - Heavy metals in the environment - Renewable energy technologies - Environmental protection of rural areas - Restoration and protection of urban environment - Prevention of noise in the environment - Environmental life-cycle assessment (LCA) - Simulations and computer modeling for the environment	
	? Homepage	
	How to publish in this journal	
	Contact	
	Join the conversation about this journal	

Quartiles





**Journal of Ecological
Engineering**

Q3

Environmental
Science
(miscellaneous)
best quartile

SJR 2018

0.26



powered by scimagojr.com

← Show this widget in
your own website

Just copy the code below
and paste within your html
code:

```
<a href="https://www.scimaç
```

D **Dr. MOHAMMAD AL ZUBI** 1 year ago

please what is the impact factor of this journal

reply



Elena Corera 1 year ago

SCImago Team

Dear Dr Mohammad,

thank you very much for your request. You can check that information in SJR website
<https://www.scimagojr.com>

Best Regards,
SCImago Team

Leave a comment

Name

Email

(will not be published)

I'm not a robot
reCAPTCHA
Privacy - Terms

Submit

The users of Scimago Journal & Country Rank have the possibility to dialogue through comments linked to a specific journal. The purpose is to have a forum in which general doubts about the processes of publication in the journal, experiences and other issues derived from the publication of papers are resolved. For topics on particular articles, maintain the dialogue through the usual channels with your editor.

Developed by:



Powered by:



Follow us on @ScimagoJR

Scimago Lab, Copyright 2007-2019. Data Source: Scopus®

EST MODUS IN REBUS

Horatio (Satire 1,1,106)

Effect of Land Use Changes of Upstream Komering Sub Watershed on Declining Water Availability

Agus Lestari Yuono¹, Dinar Dwi Anugerah Putranto^{1*}, Sarino Tukirun¹

¹ Department of Civil Engineering and Planning, Faculty of Engineering, Sriwijaya University, South Sumatera, Indonesia

* Corresponding author's e-mail: dinar.dputranto@gmail.com

ABSTRACT

Potential water resources in the upstream part of the Komering sub-watershed, in March each year ranges from 645.49 m³/sec. With a debit of that size, it should be able to increase national agricultural production in South Sumatera, Indonesia. However, in August – September, the discharge of water availability in the upstream part of the Komering sub-watershed decreased to only 43.08 m³/sec. To analyze the reduced mainstay discharge of the Upstream Komering sub-watershed, due to poor land use practices in the upstream area and the effects of climate variability, it can be analyzed by analyzing land cover conditions, the value of rain variability, and the magnitude of evapotranspiration and validation of direct measurement of river discharge in the field. Changes in land use for the upstream part of the Komering sub-watershed, which are used mostly by residents as community plantation areas, have increased the critical condition of the upstream Komering sub-watershed area of 2,517,560 Km², or about 65.66% of the total upstream Komering sub-watershed. From the measurement of debit data at the Perjaya Dam in the last fifteen years (2005–2019), the largest main discharge value in 2 weeks to two months in April was 241.67 m³/sec, while the smallest mainstay discharge occurred in the first 2 weeks of October at 54.69 m³/sec. A large difference between the largest and smallest mainstay discharge, it is necessary to think of a way so that the availability of water is always maintained throughout the year (the difference between the mainstay discharge between the rainy season and the dry season so that it is not so extreme). Some ways that can be done to maintain the availability of water include making a reservoir that can be used during the dry season, or increasing storage in the soil by reforestation and harvesting rain.

Keywords: discharge, land-use change, resources, harvesting

INTRODUCTION

The need for raw water from year to year will increase, along with the growth of world population (FAO, 2015). In Indonesia, the availability of water is expected to decrease further, along with population growth and ways of managing land that are still not suitable. Water resources in Indonesia are under increasing population pressure, rapid urbanization, industrial management and agricultural irrigation that does not pay attention to good management techniques, so that it is feared to lead to water scarcity and will threaten national food security. By 2025, around 1.8 billion people are expected to experience water scarcity, while two-thirds of the population will experience

a lack of water availability (PBB,2014). Policy makers and stakeholders in the field of water resources management will face complex challenges due to a variety of situations including climate change ecosystems, water quality problems, increasing demand for clean water supply in urban areas and challenges to integrated, adaptive, and watershed management, collaborative. Areas with arid and semiarid climatic conditions will continue to be affected by water scarcity and soil moisture deficit problems. Farmers will face a major challenge because the distribution of spatial-temporal rainfall and unpredictable rainfall patterns cause climate uncertainty and the situation of changing seasons. These problems will affect agricultural production and will decrease

food security. Sustainable management of water resources in the agricultural sector is very important to anticipate food crises and act as a catalyst for socio-economic development for the country. South Sumatera is one of the national food barns for Indonesia. Nearly 65% of the area in South Sumatera Province can become agricultural land. However, in recent years, due to inappropriate land management systems and a lot of land conversion to oil palm plantations, as well as deforestation that is not well controlled, the main discharge of some watershed areas has been disrupted. Many potential irrigation areas that have been designed to project water availability for decades to come, have experienced a very rapid decline in water quality and availability. One example, according to Yuono *et al* (2016), the Komering sub-watershed irrigation area, currently has experienced a substantial mainstay of depletion during the dry season (June-November), compared to the rainy season (November-June).

This study aims to analyze spatially, the condition of the mainstay of the discharge of the upper Komering sub-watershed, to determine the critical level of watershed in terms of its ability to be the main source of water supply for irrigation areas in South Sumatera, especially as the main source of water discharge at the Perjaya Dam in East OKU Regency, South Sumatera, in Indonesia.

MATERIAL AND METHODS

The research area is located in the upstream part of Komering Sub Watershed, which is geographically located at coordinates $103^{\circ} 34' 26'' - 104^{\circ} 19' 15''$ East Longitude and between $4^{\circ} 16' 22'' - 4^{\circ} 58' 51''$ South Latitude (Figure 1). The area of the upstream sub-watershed Komering sub-area is 3,904 Km² which stretches from the upstream sub-watershed, namely Lake Ranau to the downstream part in Martapura village (Martapura District), East Ogan Komering Ulu (OKU), with the length of the main river of approximately 112 Km.

The average height of the upstream Komering sub-watershed, the highest area is 1,875 m above sea level and the lowest is at an altitude of 100 m above sea level.

Rainfall data was obtained from Banding Agung observation station (South OKU) at an altitude of 700 m above sea level and Belitang station (East OKU) with an altitude of 100 m above sea level for the period of observation for 12 years (2006 – 2018). While the discharge measurements were obtained from measurements at the East OKU, Perjaya Dam, District of Martapura, from 2005 to June 2019. Climatology data collected were monthly data, consisting of temperature, solar radiation, relative humidity, and wind speed. As for the slope obtained from the DEM analysis using height data (contour) obtained from the Shuttle Radar Topography

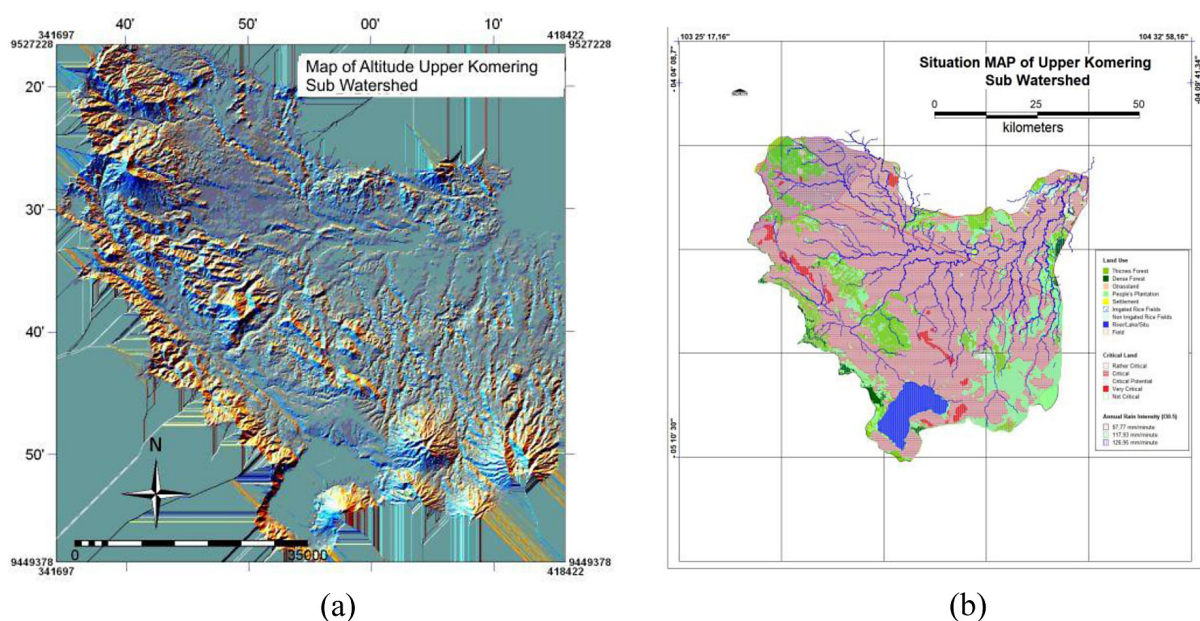


Figure 1. Komering sub catchment upstream areas, (a) altitude (b) land use, critical level and rainfall intensity

Mission digital Elevation Model (SRTM) with a resolution of 25 m, from the Balai Besar Wilayah Sungai (BBWS) region VIII, South Sumatera Province, in Indonesia (2016). Likewise, land use data, soil types and other data on a scale of 1: 50,000 were obtained from the BBWS region VIII, South Sumatera Province.

To calculate the mainstay debit data, used 10 years earlier to get the probability of success smaller or equal to 0.9 and 20 years to get the probability of success above 0.9. For mainstay discharge irrigation purposes it is usually set at 80% (0.8), so that the minimum required data is 10 years or more.

Determination of mainstay discharge used Waibul equation (discharge duration curve), namely :

$$P(X \geq x) = \frac{m}{n + 1} 100\% \quad (1)$$

where: $P(X > x)$ is the probability of the occurrence of variable X (discharge) equal to or greater than $x \text{ m}^3 / \text{sec}$.

m is data rank

n is the amount of data

X is a debit data series

X is the mainstay debit data series if the probability matches the designation, for example $P(X > 80\%) = 0.8$

The basic concept used to calculate water availability is the hydrological cycle developed by Mock (1978), in this case the focus of analysis is centered on discharge through the watershed system, including components of rain, evapotranspiration, interception, ground water, and water balance . Calculation of water balance is adification of the Thornthwaite method by ncluding limited evapotranspiration. It is also assumed that the green plants remain and the maximum soil moisture is 200 mm. The R_{80} mainstay discharge is used for analysis of water availability.

RESULTS

Based on the results of monthly rainfall analysis for R_{80} , the highest average rainfall was found in November – May, with maximum rainfall in December (195.15 mm/month), and the lowest rainfall occurred in August (13.19 mm/month).

From Figure 2 it can be seen, the magnitude of potential evapotranspiration is 128.73 mm/ month in August and the lowest of 106.79 mm/month for February. The total run-off for the upstream Komering watershed, with an average slope ranging from 8% – 24%, and mostly dominated by smallholder plantations with an average

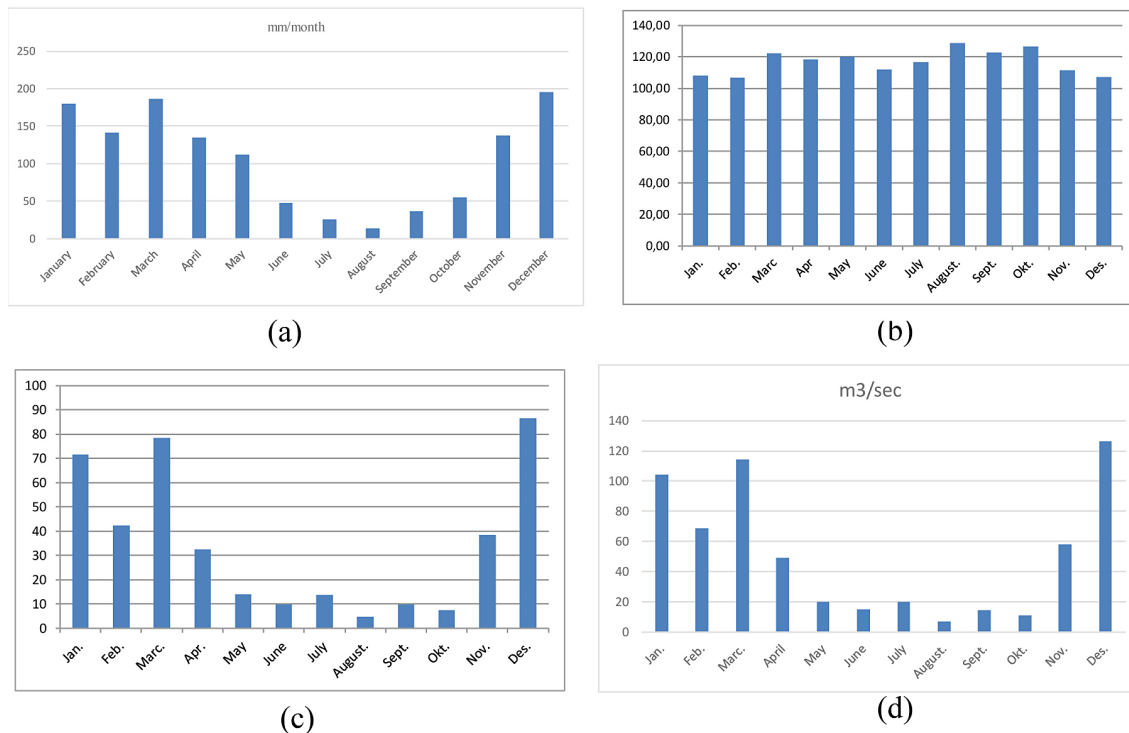


Figure 2 Calculation results for (a) Precipitation (mm / month); (b) potential evapotranspiration (monthly; mm/month), (c) Total Run-off (mm / month); (d) Stream Flow (m³/sec)

infiltration coefficient of 0.317, the magnitude of the total run-off in the Komering sub-section The highest average upstream is between November to April, where the highest occurs in December (86.61 m³/sec) and the lowest in August is 6.80 m³/sec. Based on the above conditions, the largest amount of stream flow for the upstream Komering sub-watershed was 126.24 m³/sec in December and the lowest occurred in August at 6.80 m³/sec. Based on the calculation of R₈₀ using the Mock method, the highest value of the average main discharge occurs in November-May and the lowest in June-September, with the largest mainstay discharge in the second week of April at 248 m³/sec and the lowest in the month October of 52 m³/sec.

Based on field measurements the observations and analysis of the water balance of the upstream Komering sub-watershed for the first planting period in October and November 2019 to 2024 were in October (a) devisit of -32,668,480 m³ for 2019, while in 2024 devisit will occur - 51,802,592 m³, and if the potential land to be developed has already been done by putting in a new paddy field, then the devisit of water will increase to twice, or

equal to - 133,560,915 m³. While the volume of water shortages, during the first planting period in November 2024 (b), there was a devisit of water debit amounting to - 10,926,188.56 m³ in 2024 and will increase to a devisit - 37,352,510.45 m³ in the second planting period. And if the development of new fields is then carried out, the devisit of water will increase to - 51,127,851.69 m³.

DISCUSSION

The availability of water in a watershed is related to the arrival of water sources, namely the rainfall that enters the watershed, as well as the amount of evapotranspiration. The relationship between the availability of water (Debit) that can be accepted by the watershed with the extent of the watershed is very decisive, although the area is large but not necessarily the resulting discharge is also large. The relationship of water availability with Evapotranspiration is certainly influential because evapotranspiration will result in surface water and also water in plants will evaporate so that will result in reduced water that

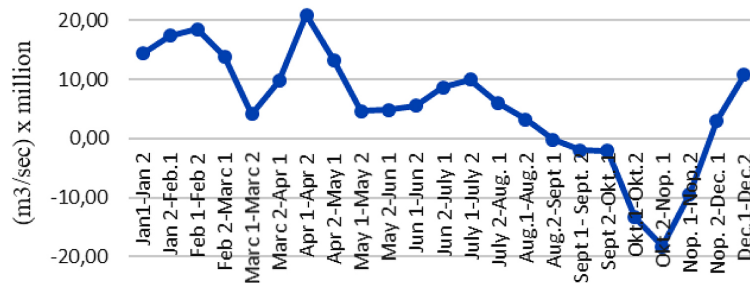


Figure 3. Water balance of the upstream Komering sub-watershed, observations and projections for Planting 1 (October until November to 2024)

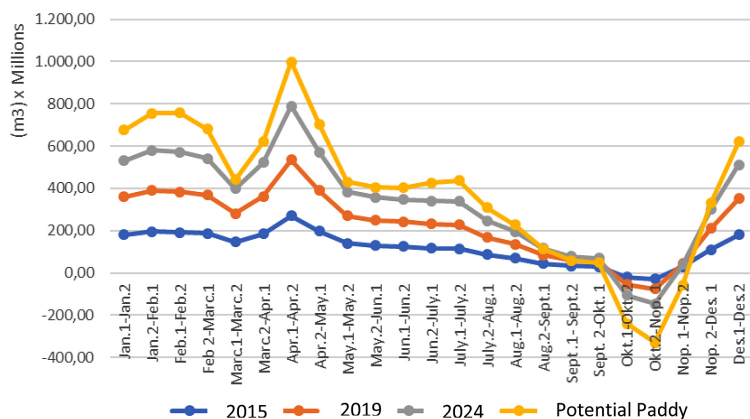


Figure 4. Mainstay discharge of the Komering river for one year is calculated every two weeks

can be accepted by the watershed. Likewise, the relationship of water availability will be affected by the length of the river, if the river is long, it is certain that the volume of water it will load will also increase. With the length of the main rivers of the upstream Komerling sub-watersheds along 112 Km, then the expected volume of upper Komerling sub-watersheds should be able to flow through the Perjaya Dam irrigation area. But in fact the debit mainstay of the Perjaya dam is declining, due to inappropriate land management. This is closely related to land management in the upstream area, where if the rainy season and soil erosion occur, the river will be eroded so that siltation will occur which will result in reduced river capacity. If the capacity of the river decreases while the incoming water exceeds the capacity of the river, the river will overflow and sometimes cause flooding.

At the current upstream Komerling Sub-watershed the maximum current is 269.80 m³/sec and a minimum discharge of 16.07 m³/sec. Monthly average discharge of 116.59 m³/sec. In April the upstream Komerling Sub-watershed discharge was 125.28 m³ / sec. This is because the rainfall in the month is smaller because the sub-watershed only accepts rain only and does not receive runoff from other sub-watersheds. So that if it rains a little then the flow is also small or small. Long stream flow should be large because the river can hold more water, but the fact is that even though the river has a long amount of rain received in the watershed there is little or rarely rain, the flow will also be small. On this basis, efforts should be made to restrain the flow of runoff to enter more into the soil layer, which can be done by making more dams or reservoirs. At present, the construction of Tigadihaji Dam weir is still being carried out. If the three haze weir has been completed, then the amount of discharge capacity that can be utilized will still devisit water for irrigation of 299,699,256.72 m³.

CONCLUSION

Based on the results of the analysis and discussion above, it can be concluded as follows :

1. The recurrence of the mainstay discharge of the upstream Komerling sub-watershed is due to an increase in the conversion of the land of the real estate plantations almost 34% turned into various uses, so that it will reduce the

function of water infiltration into the soil during the rainy season

2. To increase the main discharge of the Komerling sub-watershed, it is necessary to make efforts to increase reservoirs and reservoirs of water (lakes) for efforts in harvesting rain for the continuity of agriculture in the area.

Acknowledgements

Thank you to the Research and Community Service Institute of Sriwijaya University for funding this research through the Competitive grant of the Sriwijaya University for the 2019/2020 fiscal year.

REFERENCES

1. Dinar Dwi Anugerah Putranto, Sarino, Yuono, AL, 2013, Model Monitoring Lingkungan DAS Untuk Pengendalian dan Mitigasi Bencana Banjir, FIT ISI Conference, no. 5, 213–2020
2. Kadyampakeni D.M., S. Kazombo-phiri, B. Mati, and I. R. Fandika, 2014, Impacts of Small-Scale Water Management Interventions on Crop Yield , Water Use and Productivity in Two Agro-Ecologies of Malawi,” no. April, pp. 454–465.
3. FAO,2015, <http://www.fao.org/ag/agp/greenercities/en/whyuph/>
4. Patil J.P.,A. Sarangi P. SinghA. K. Singh.T. Ahmad, 2008, Development of a GIS Interface for Estimation of Runoff from Watersheds,” Water Resour. Manag., vol. 22, no. 9, pp. 1221–1239.
5. Krois J, Schulte A (2014) GIS-based multi-criteria evaluation to identify potential sites for soil and water conservation techniques in the Ronquillo watershed, northern Peru. Appl Geogr 51:131–142
6. Ngigi, 2006. Hydrological Impacts of Land Use Changes on Water Resources managements and Social Economic Development of upper Ewaso Ng'iro River Basin in Kenya
7. Putranto Dinar DA, Yuono AL, Sarino, 2017. Spatial distribution level of land erosion dispotion based on the analysis of slope on central Lematang sub Basin. 3rd International Conference on Construction and Building Engineering (ICONBUILD) 2017. AIP, 1903, 0300071 – 0300078.
8. United Nations (2014) Available online: <http://www.un.org/waterforlifedecade/scarcity.shtml>
9. Yuono AL, Putranto Dinar DA, Sarino, 2015. Digital Terrain Model for Rainfall Run-off Modeling Regional Analysis of Sedimentation in the Musi River Basin, Sriwijaya University Research Institute, South Sumatera, Indonesia.