



CERTIFICATE

No: 10.3/INOVCOM-FP/2016


This is to certify that


Dinar Dwi Anugerah Putranto

Has contribution as a

Paster

Title: Model Operasional Infrastructure Development of Special
Economic Zones Tanjung Api-Api


Prof. Dr. Yudi Firmanul Arifin
Director of
Research Consortium for
Sustainable Tropical Forest
Management


The 1st
INOVCOM
Dr. Firman Fauzi
Head of Committee
INOVCOM FP 2016

“The 1st International Conference on Innovation
and Commercialization of Forest Product”

Rodhita Hotel, Banjarbaru, South Kalimantan, Indonesia
November, 22nd - 23rd, 2016



PROCEEDINGS

INTERNATIONAL SEMINAR

“The 1st International Conference on Innovation and Commercialization of Forest Product”

Banjarbaru, South Kalimantan, Indonesia

November 22nd - 23rd, 2016



Research Consortium for Sustainable Tropical Forest Management
Lambung Mangkurat University

PROCEEDINGS
INTERNATIONAL SEMINAR
*The 1st International Conference on Innovation and
Commercialization of Forest Product 2016*
Rodhita Hotel Banjarbaru, South Kalimantan, Indonesia
November 22nd – 23rd, 2016

Organizer



**Center of Excellence Research Consortium for
Sustainable Forest Management**

Proceedings

The 1st International Conference on Innovation and Commercialization of Forest Product (INOVCOM-FP 2016)

Organized by

Center of Excellence Research Consortium for Sustainable Tropical Forest Management

In Collaboration With

Bank BNI Banjarmasin

Local Government of Tanah Laut

PT. Adaro

Copyright Reserved

Copyright @ 2016

ISBN: 978-602-6483-37-9

Edited by:

Prof. Dr. Ir. Gt. Muhammad Hatta, M. S.

Prof. Yasushi Morikawa

Prof. Dr. Ir. Wasrin Syafii, M. Agr

Prof. Dr. Ir. Yusuf Sudo Hadi, M. Agr

Prof. Dr. Enos Tangke Arung, S.Hut, M. P.

Dr. Sigit Sunarta, S.Hut, M.P., M.Sc.

Dr. Satria Astana

Ir. Harry Budi Santoso., M. P.

Published by:

Lambung Mangkurat University Press

Publisher Address:

Pusat Pengelolaan Jurnal dan Penerbitan Unlam
Jl. H. Hasan Basry, Kayu Tangi, Banjarmasin 70123
Gedung Rektorat Unlam Lt 2
Telp/Faks. 0511-3305195

xi-553 p, A4 210x297 mm

First Edition : Desember 2016

ISBN: 978-602-6483-37-9

PREFACE

Forest resources have the potential multi function that can provide economic benefits, environmental and social well-being of mankind. The existence of multiple functions in terms of economic, ecological and social have put Natural Resources (SDA) is an important part of many contributors to national development in realizing the overall prosperity of the people of Indonesia. The benefits derived from timber and non-timber and ecotourism. Forest products have the potential and very important role for the formation of economic activities that are labor intensive in order to create a cottage industry that a lot of absorbing manpower and strengthening the joints of the rural economy. Diversity of forest products is a major force for the provision of a wide range of green goods product, product services and the development of diversified products and services of forest resources.

The 1st International Conference on Innovation and Commercialization of Forest Product held at Roditha Hotel Banjarbaru, November 22nd, 2016, and then We will enjoy to take a field trip in Kampung Apisiliculate based on Honeybee (Desa Telaga Langsat, Pelaihari) on November 23rd, 2016.

This Event, the committee has received 73 fullpaper submissions covering 4 fields, consist offield A (Regulation of Innovation and Commercialization of Forest Product: 15 tittles), field B (Innovation and Commercialization of Timber Forest Product: 10 tittles), field C (Innovation and Commercialization of Non Timber Forest Product: 42 tittles) and Poster (6 tittles).

This Seminar could not be conducted without the support and cooperation from many sources. We would like also thank to Government of Tanah Laut Regency, Lambung Mangkurat University, PT Adaro Indonesia, BNI 46 Branch Banjarmasin.

Also, we want to say thank to the steering committee, all of committee, and students as volunteers in this symposium.

Banjarbaru, November 2016
Head of Committee

Dr. Hamdani Fauzi

TABLE OF CONTENTS

PREFACE	iv
OPENING SPEECH :	
Head of Committee	vi-viii
Director of Research Consortium for Sustainable Tropical Forest Management	ix
Rector of Lambung Mangkurat University	x-xi
TABLE OF CONTENT	xii-xix
CONCLUSIONS	xx-xi
KEYNOTE SPEAKER	
Director General of Sustainable Management of Production Forests Ministry of Environment and Forestry <i>Enhancement of Added Value, Legality and Export Policy of Forest Products</i> By : <i>Ida Bagus Putera Parhama, PhD</i>	1-5
Local Government of Tanah Laut <i>Mewujudkan Kesejahteraan & Hutan Lestari Melalui Pengembangan Hhbk (Lebah Madu)</i> Bupati Tanah Laut.....	6-21
Business/Industry <i>Commercializing agro-forestry food products: From smallholders to global market</i> By: <i>Dr. Suprpto S.T., MSc.</i>	22-29
INVITED SPEAKER	
Smallholder Agroforestry Systems for Timber and NTFPs Development By : <i>Dr. Gerhard Manurung (International Center for Research in Agroforestry/ICRAF)</i>	30-38
Innovation and Commercialization in Forest Products Research Field By : <i>Prof. Dr. Ir. Fauzi Febrianto, M.Sc (IPB, Bogor)</i>	39-67
Innovation and Commercialization of Non-Timber Forest Product: A Case Study in South Kalimantan Province By : <i>Prof. Dr. Yudi Firmanul Arifin (Research consortium for STFM)</i>	68-74
The Primary Non Timber Forest Product (NTFPs) of Some Regencies in South Kalimantan By : <i>Assc. Prof. Dr. Mahrus Aryadi (Research consortium for STFM)</i>	75-77
Wood quality of tropical trees By : <i>Assc. Prof. Dr. Futoshi Ishiguri (Utsunomiya University, Japan)</i>	78-86

Screening of Anti-Diabetes Activity of Agarwood Extracts from <i>Gyrinops versteegii</i> (Gilg.) Domke in Lombok Island, indonesia) <i>Agus Sukito, Saptadi Darmawan</i>	485
Essential Oil of <i>Actinodaphne</i> Sp <i>Harlinda Kuspradini</i>	486
Potency of Mangrove Medicinal Plant of Baluran National Park <i>Susy Andriani</i>	487-496
The Use of Sawdust and Rice Husk in Cultivating Oyster Mushroom (<i>Pleurotus ostreatus</i>) at Karang Intan District Banjar Regency <i>Abdi fithria, Siti saidah, Fauzi rahman</i>	497-504

POSTER

Growth Variation Of <i>Bitti (Vitex Cofassus)</i> Seedling From Several Families <i>C. Andriyani, Prasetyawati, Purwanto Budi Santosa, Tri Wira Yuwati</i>	506
Utilization Potential Of Famili <i>Palmae</i> Plants In The Bajuin Waterfall Area Tanah Laut Regency <i>M. Arsyad, Ervina Y</i>	507
Medicinal Plants Of The <i>Litsea</i> Genus from Indonesia <i>Dewi Alimah</i>	508-516
Characteristics Of Crystal Palm Sugar In The Batang Kulur Village <i>Yuniarti, Fatriani, Henni Aryati</i>	517-520
Model Operasional Infrastructure Development Of Special Economic Zones Tanjung Api-Api <i>Dinar dwianugerahputranto, Heni Fitriani, Gunawan Tanzil, Ratna Dewi</i>	521
Formulation And Evaluation Of A Herbal Body Wash Containing Kokang (<i>Lepisanthes amoena</i> (Hassk.) Leenh.) Leaves Extract <i>Husnul Warnida, Sapri, Titin Hartini</i>	522-530
Development Silvofisheries Cultivation Brackish Water As It Shrimp Windu (<i>Penaeus Monodon</i>) <i>Rukmini</i>	531

APPENDIX

COMMITTEE OF INOVCOM – FP 2016	533
SCHEDULE OF INOVCOM – FP 2016	534
PARTICIPANT OF INOVCOM – FP 2016	535-547
DOCUMENTARY PHOTOGRAPHY	548-553



Operational Model Infrastructure Development of the Special Economic Zones of Tanjung Api-Api

Dinar Dwi Anugerah Putranto,
Heni Fitriani, Ratna Dewi

Civil Engineering Study Program, Sriwijaya University
dwianugerah@yahoo.co.id

Background

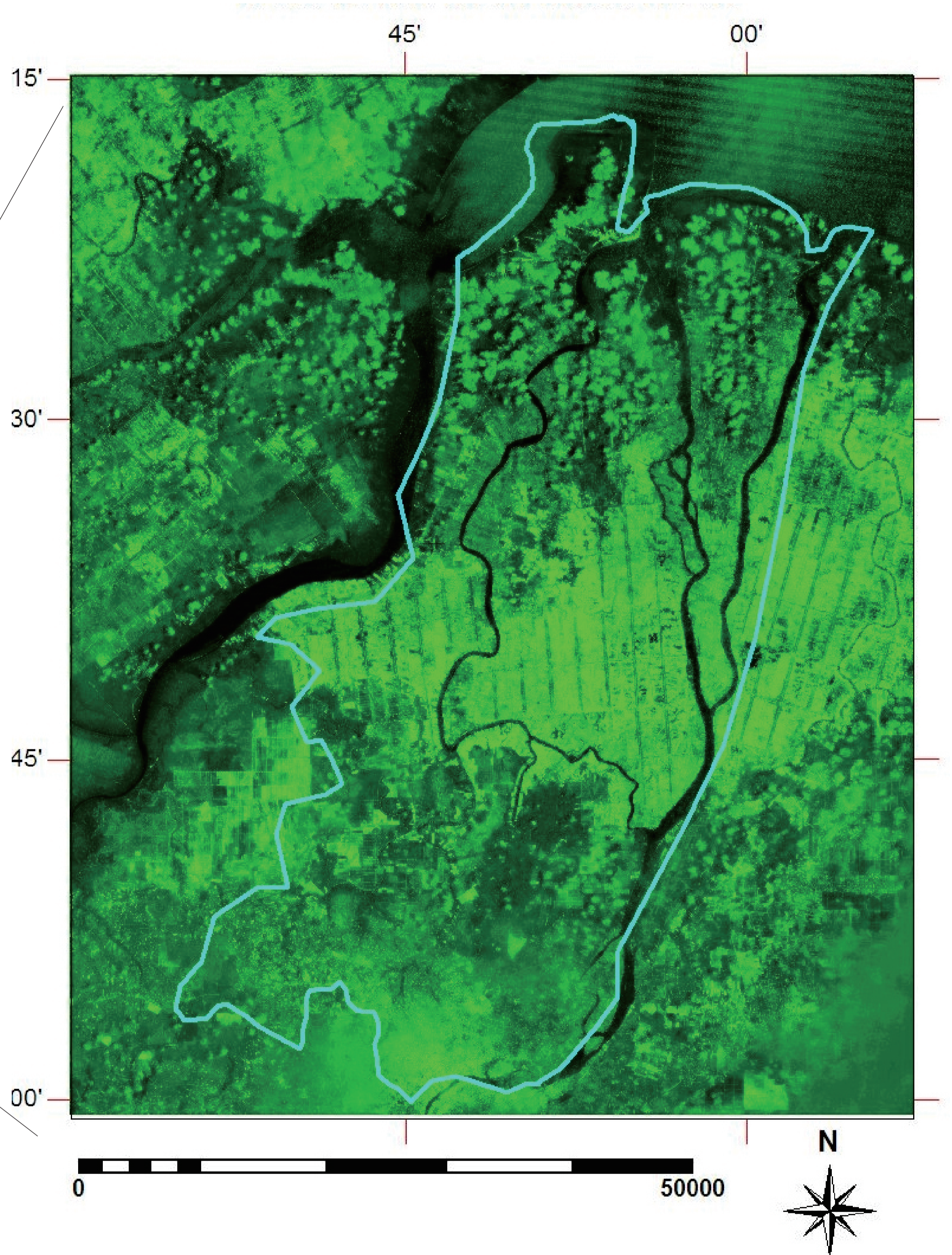
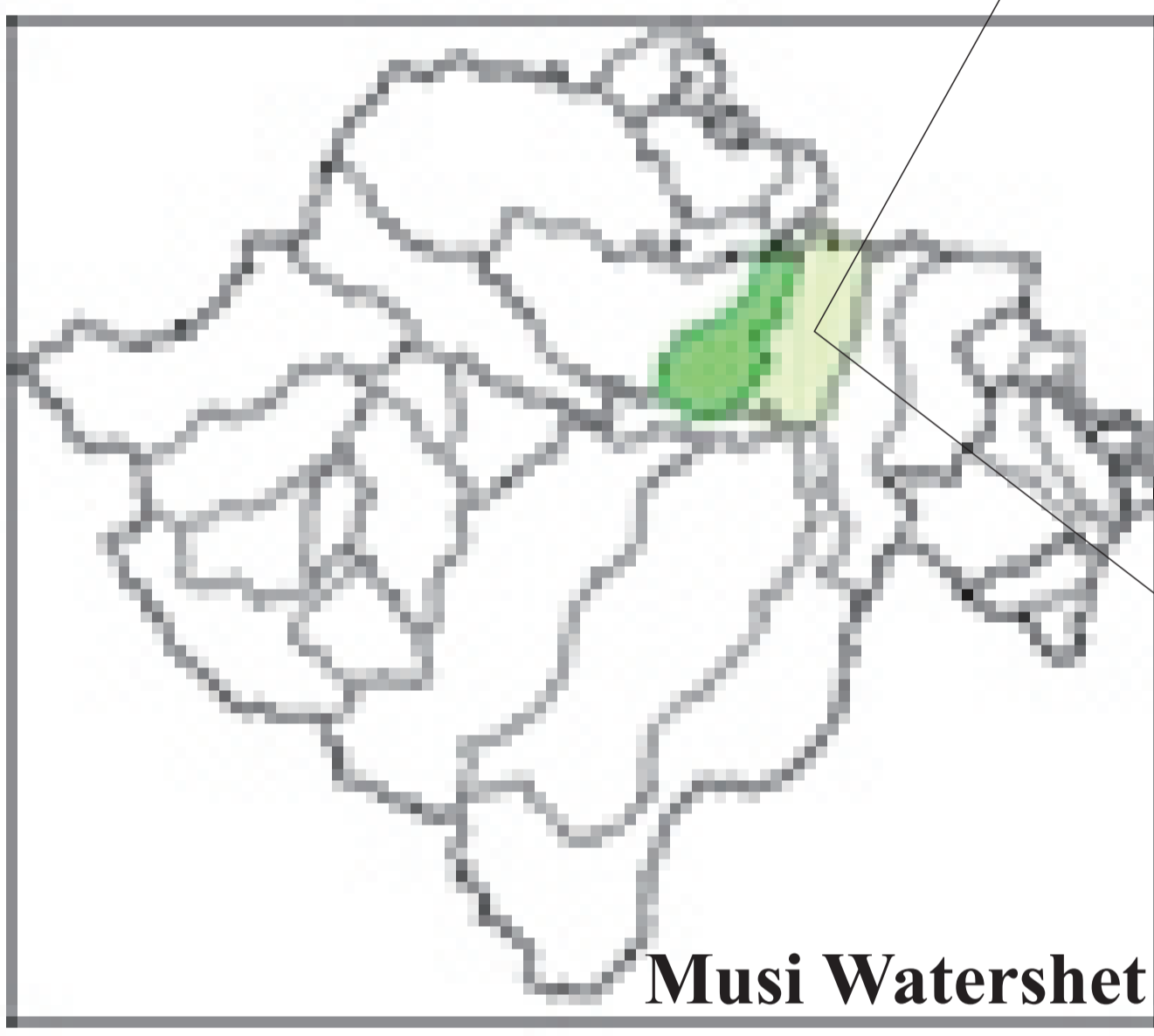
Special Economic Zones Tanjung Api-Api, is one area in Indonesia economic to develop into economic zone as well as being one of the gate west region investment island of Sumatera, and Indonesia. in the region the whole building will be build large scale industries for agricultural purposes, fertilizers, rubber and other export commodities purposes.

The Long debate about regional development in sub-optimal land, always concerned with the question of how to secure the environmental conditions, the economic development of the region have a greater impact. This study aims to develop and evaluate the approach to spatial planning support system as an operational instrument impact assessment formula in infrastructure development. The system is built will use all relevant data, such as swamp conditions, the carrying capacity of the land, the influence of tides, depth and strength of soil, land use, geophysical, and socio-economics

Metodology

A. Location

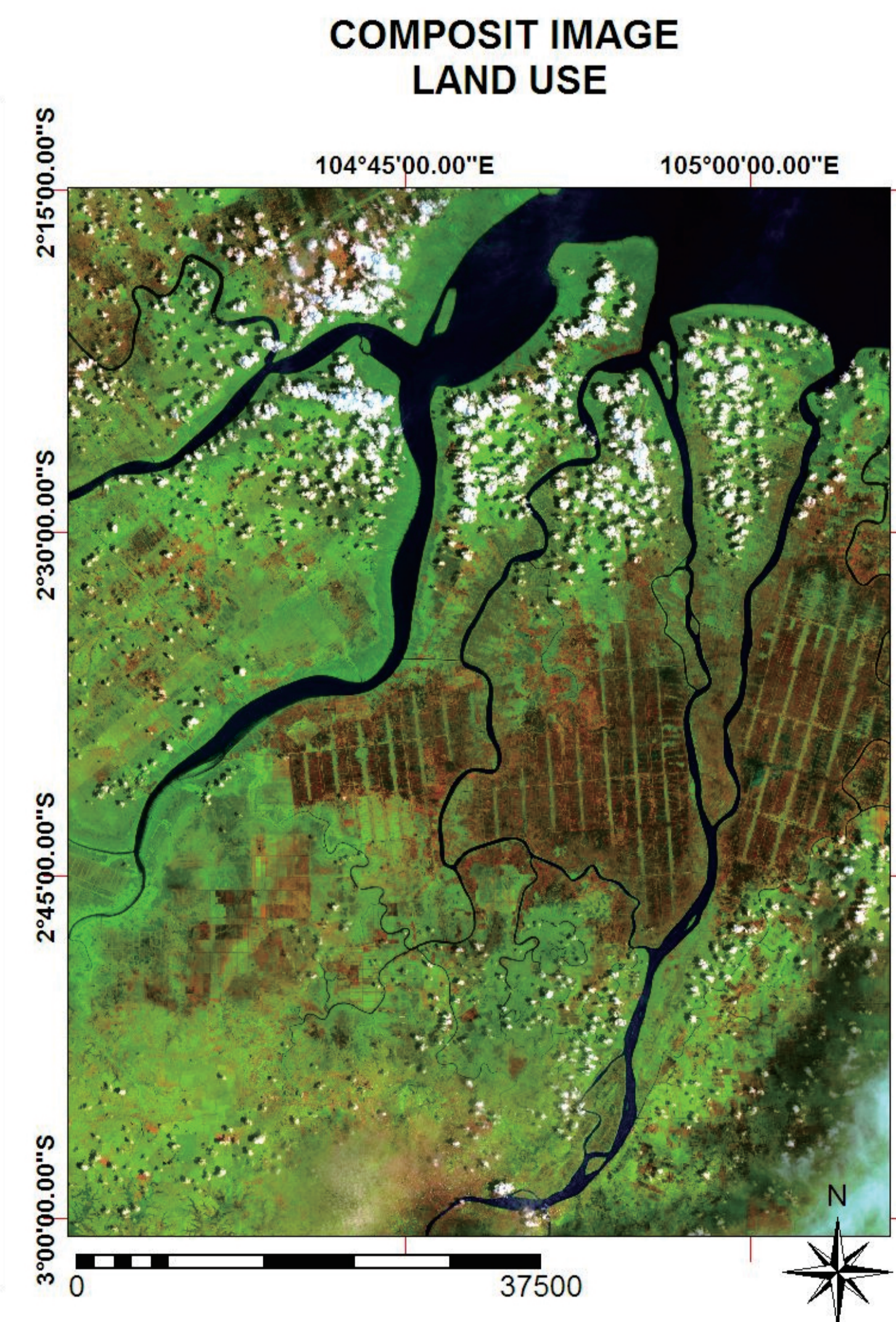
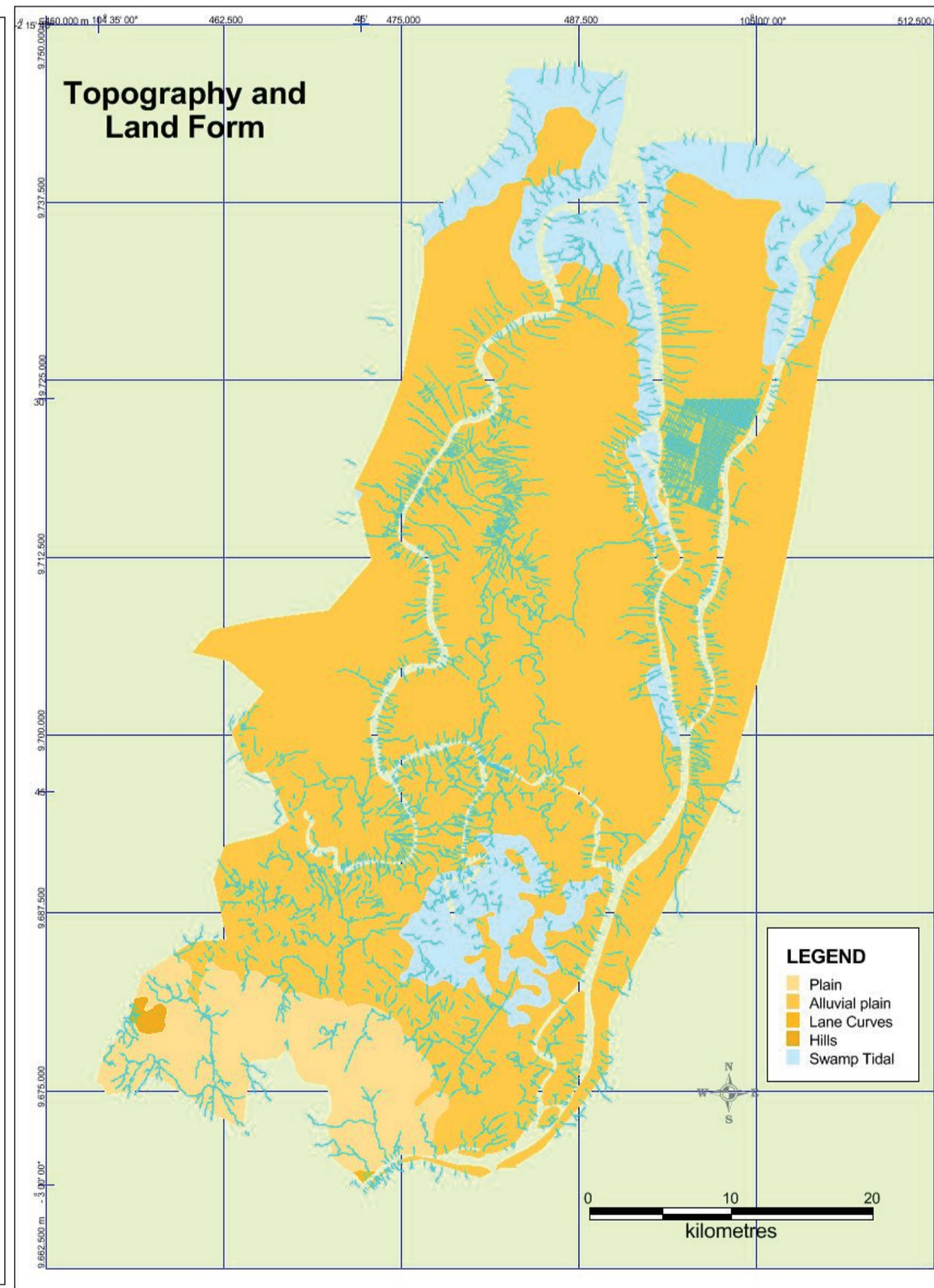
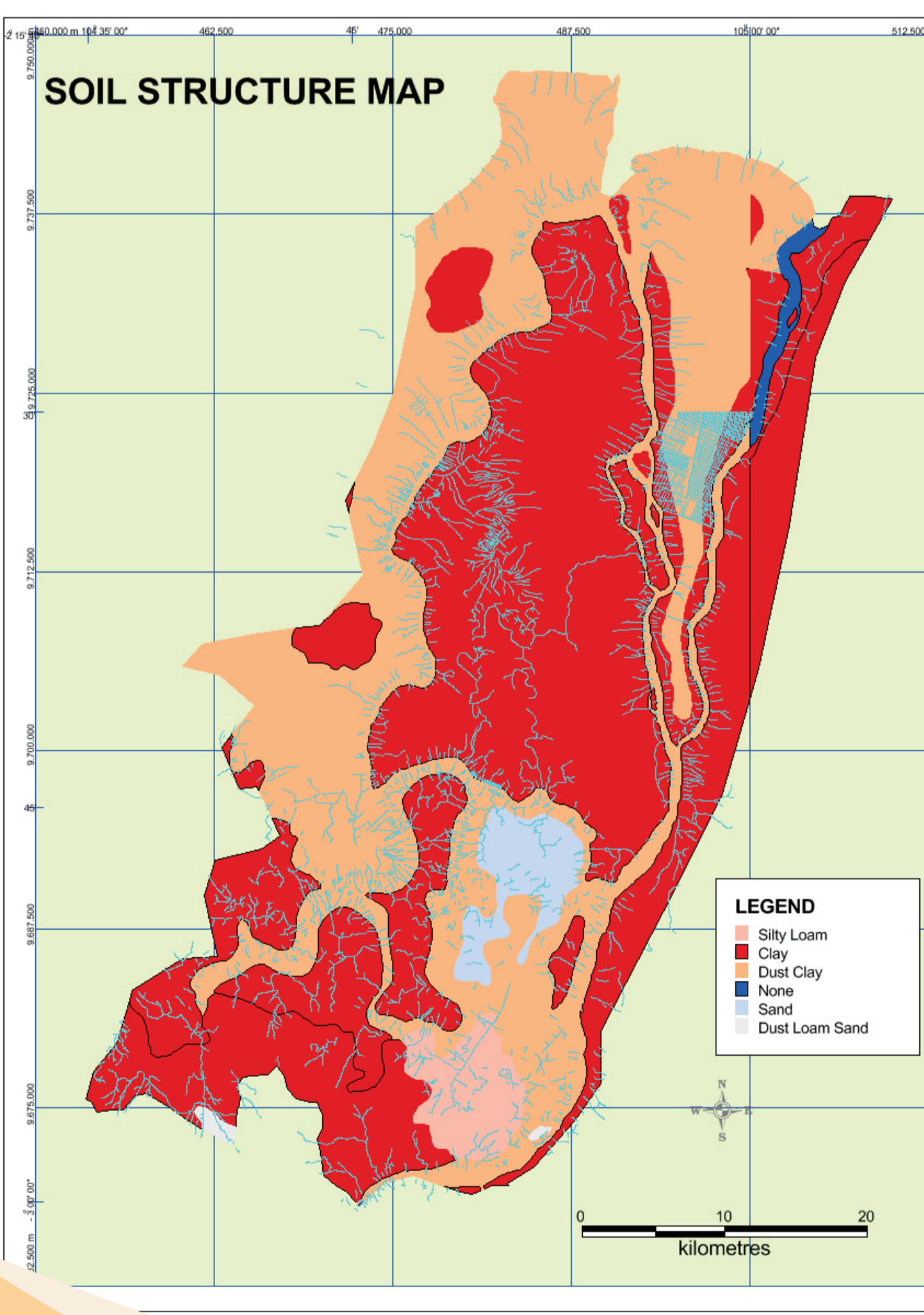
This area is located in the basin Musi Downstream, an area with a height of less than 16 m above sea level, is largely a swampy area, composed of soil type associations Glei humus and organosol, as well as alluvial soil as deposition of sediment Banyuasin river, Telang rivers and the Musi river in downstream



B. Research Method

The technique used is to use Normalized Different Water Index (NDWI), where the index of satellites of channel Near Infra Red (NIR) and Short Wave Infrared (SWIR), which is a reflectance of reflection of changes in the moisture content of vegetation and structures on vegetation cover. And for classifying land use is using NDVI method. NDVI using red wavelengths (R) and infrared (NIR). Techniques used in the extraction of soil types is the Normalized Difference Soil Index.

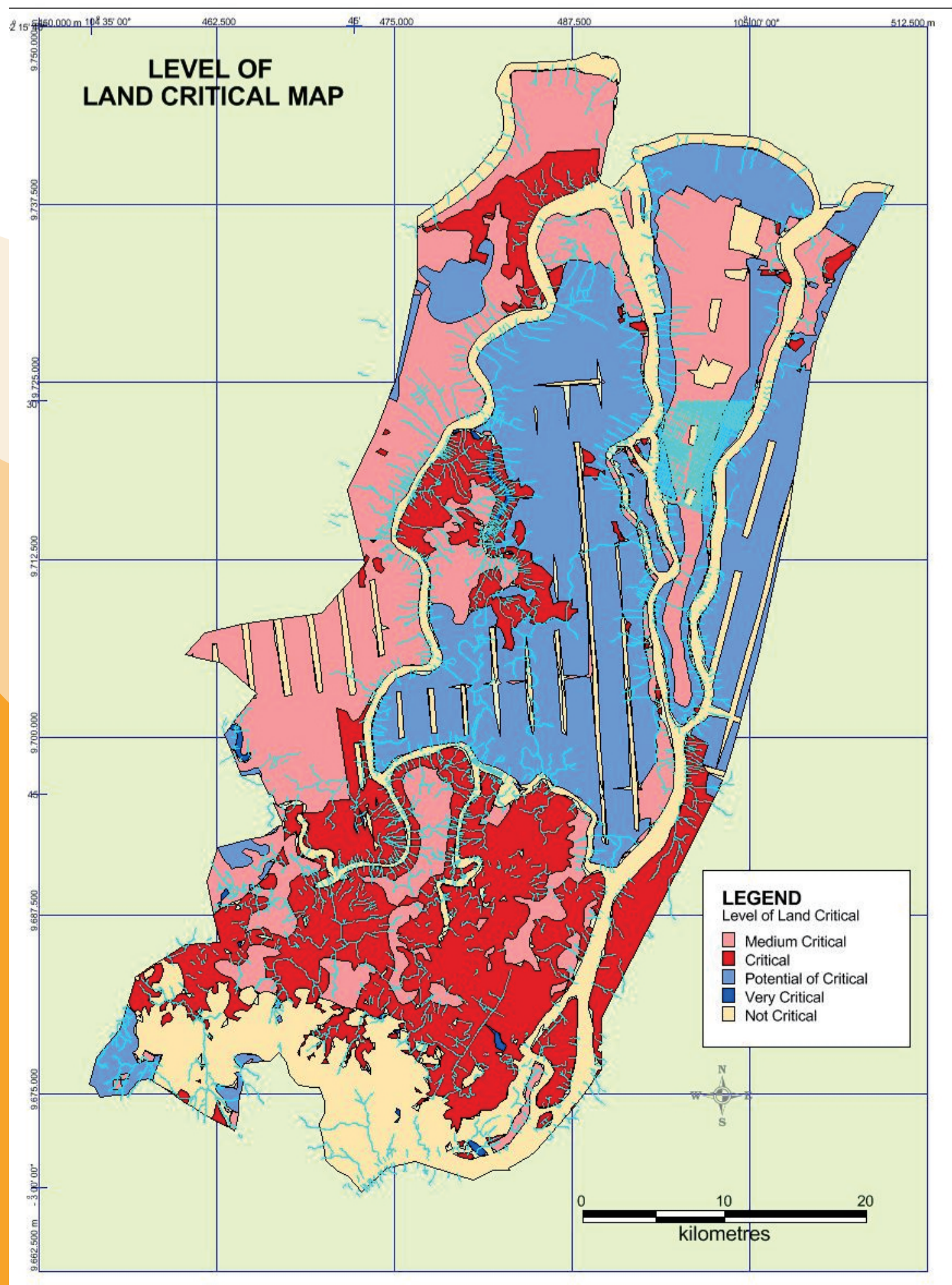
C. Results and Discussion



The formation of degraded land is one of the indicators of ecological and environmental damage. Land that has been damaged will automatically be reduced anyway function and role. The decline in the function caused by land use patterns that have little or no attention to soil conservation techniques. Based on a review of critical land in 2014, is currently listed in critical land area surveyed an area of 1.89078 million hectares in the category somewhat critical, Ha 3,439,632.73 in critical categories, and 208,507.77 hectares in the category of very critical. Various forest and land rehabilitation activities continue to be encouraged as you recover functions of forests and land

Using the multi criteria evaluation approach and map overlay, the following analysis results are obtained:

1. In the existing condition, the Tanjung Api-Api area has low land subsidence potential for various land uses
2. In the condition of the Special Economic Zone (SEZs) development plan, the potential for a high reduction will occur in the Industrial and residential zones, when using deep wells / drills and heaps > 2 m (S = 35.23 - 39.28).





GUIDE BOOK

INTERNATIONAL SEMINAR

**"The 1st International Conference on Innovation and Commercialization of Forest Product"
Banjarbaru, South Kalimantan, Indonesia
November 22nd - 23rd, 2016**



Research Consortium for Sustainable Tropical Forest Management
Lambung Mangkurat University



GUIDE BOOK

INTERNATIONAL SEMINAR

"The 1st International Conference on Innovation and Commercialization of Forest Product"



PREFACE

Forest resources have the potential multi function that can provide economic benefits, environmental and social well-being of mankind. The existence of multiple functions in terms of economic, ecological and social have put Natural Resources (SDA) is an important part of many contributors to national development in realizing the overall prosperity of the people of Indonesia. The benefits derived from timber and non-timber and ecotourism. Forest products have the potential and very important role for the formation of economic activities that are labor intensive in order to create a cottage industry that a lot of absorbing manpower and strengthening the points of the rural economy. Diversity of forest products is a major force for the provision of a wide range of green goods product, product services and the development of diversified products and services of forest resources.

The 1st International Conference on Innovation and Commercialization of Forest Product held at Rudhita Hotel Banjarbaru, November 22nd, 2016, and then We will enjoy to take a field trip in Kumpang Apidiculute based on Honeybee (Desa Telaga Langsat, Pelaihari) on November 23rd, 2016.

This event, the committee has received 73 fullpaper submissions covering 4 fields, consist of (Innovation and Commercialization of Timber Forest Product: 15 titles), field B (Innovation and Commercialization of Non Timber Forest Product: 42 titles) and Poster (6 titles).

This seminar could not be conducted without the support and cooperation from many sources. We would like also thank to Government of Tanah Laut Regency, Lambung Banglaurat University, PT Adaro Indonesia, BNI 46 Branch Banjarmasin.

Also, we want to say thank to the steering committee, all of committee, and students as volunteers in this symposium.

Banjarbaru, November 2016
Head of Committee

Dr. Hamdani Fauzi

INTERNATIONAL SEMINAR The 1st International Conference on Innovation and Commercialization of Forest Product

A. BACKGROUND

KPH operationalization in Indonesia is an opportunity open forest product development, including efforts to increase technology and innovation in the processing and utilization, as well as business development and business-based forest products. Through KPH setting authority to manage its territory, forest products will be driving the real economy and the level of dignity of forestry in the area.

In the framework of the management and utilization of forest products, some policies and regulations have been made, among others: Law No. 41 of 1999 article 26 of the collection of NTFPs in Protected Forests, article 28 concerning the utilization of NTFPs in forest production, Government Regulation No. 6 of 2007 on Optimization of NTFPs, article 28 concerning Collection of NTFPs in Protected Forests, article 43 concerning the utilization of NTFPs in Forest Plantations on Forest Production. Until now, the contribution of forest products are still not viable for poverty reduction, economic and social development, and environmental sustainability, but for some people the utilization of forest products to meet the needs of life, but also for commercial purposes.

Several steps must be done so that the development of forest products could be as expected. Domestication of plants shown to be ecologically, technically, economically and socially accepted local communities can produce products and services that benefit the prospective forestry should be developed not only as an effort to optimize land in Forest Plantations and Natural Forest but also must qualify as a business. Needed a wide choice of development strategy of forest products nationally among others stimulation of the formation centers, socialization, coordination, and build entrepreneurial capacity and capability innovation.

In line with this, the development of enterprises towards innovation and commercialization of technology-based products for forest products are appropriately carried out. Innovation system is composed of industry clusters, partnerships, network dynamics and innovation is key to success in forestry development. Innovation in terms of technology and non technology needed to repair the structure and an increase in the value chain in the forestry sector. The participation of the community to be able to participate in efforts to manage forests are indispensable in this regard, as well as education and empowerment of communities around the forest needs to be improved.

In line with the above efforts, it is necessary to hold an international seminar on innovation and commercialization for forest products with the title "The 1st International Conference on Innovation and Commercialization of the Forest Products". Hopefully, by the seminar, researchers, bureaucracy, practitioners, industry, business and policy makers related to the business development of forest products can come together to share research experiences, ideas and concepts as well as business experience relating to innovation and the commercialization of products Forest.

B. PURPOSE

1. To collect information regarding efforts that have been and should have been carried out by operators, stakeholders and the wider community in the development of forest products from upstream to downstream, especially in activities focused on the innovation and commercialization of forest products and derivatives.

3. To build a more integrative research activities, involving different disciplines and oriented to the needs of users (user-oriented), produce forest products and the development of innovative technology, high value, market-oriented, environmentally friendly and highly competitive.
4. The existence of systemic and collaborative step in improving the competitiveness of forestry from various stakeholders such as the Ministry of Environment and Forestry, the Ministry of Industry and the Ministry of Research, Technology and Higher Education
5. supporting national policies in developing and improving the production of forest products
6. The existence of reference for businesses, stakeholders and the wider community in the development of forest products, especially in the business or activities of the innovation and commercialization of forest products.
7. Finding solutions to overcome obstacles encountered in the development of forest products, in particular on the activities of the innovation and commercialization of products and derivatv
8. establish a cross meningkatkan networking and collaboration between experts (scientists or researchers), practitioners, businesses and industries, as well as the entrepreneurs to jointly conduct the innovation and commercialization of forest products using a media publication for academics / researchers Indonesia (to publish findings and research, particularly regarding the innovation and commercialization of products based on the development of forest products).

C. DATE AND VENUE

The seminar will be taken place at Rodhita Hotel, Banjarbaru, South Kalimantan, Indonesia on November 22nd, 2016 and fieldtrip at kampong apsilvikultur, Tanah Laut Regency on November 23rd, 2016.

D. PARTICIPANTS

Speakers and participants came from various backgrounds who come from Indonesia and abroad such as)

1. Academics,
2. Researchers,
3. Bureaucracy,
4. Policy makers,
5. Business/Industry and
6. Forest communities.

Speaker

1. Keynote Speaker :

- a. The Minister of Environment and Forestry
- b. The Minister of Industry
- c. Local Government of Tanah Laut
- d. Business/Industry

2. Invited Speaker

- a. Dr. Gerhard Manurung (International Center for Research in Agroforestry / ICRAF)

- b. Asst. Prof. Dr. Futoshi Ishiguri (Utsunomiya University, Japan)
- c. Asst. Prof. Dr. Mahrus Aryadi (Research Consortium for STFM and INAFE)
- d. Prof. Dr. Yudi Firmanul Arifin, M.Sc. ((Research Consortium for STFM)
- e. Prof. Dr. Fauzi Febrianto (Bogor Agriculture Institute / IPB)

The seminar will also present 69 papers simultaneously and 6 posters, which are divided into three fields:

- A) Regulation of Innovation and Commercialization of Forest Product
- B) Innovation and Commercialization of Timber Forest Product
- C) Innovation and Commercialization of Non Timber Forest Product

E. COMMITTEE

Steering Committee : 1. Rector of Lambung Mangkurat University
2. Dean of Faculty of Forestry
3. Head of Center of Excellence Research Consortium for Sustainable Forest Management

Head of Committee : Dr. Hamdani Fauzi
Vice : Dr. Acep Akbar

Secretary : Siti Hamidah, S.Hut, M.P
Staff of Secretary : 1. Trisnu Satrladi, S. Hut, M.Si
2. Adiatina Fitriani, S.Hut, M.P.
3. Diana Handayani, S.Hut
4. Dedy Ariadi

Finance : Hj. Arfa Agustina Rezekiah, S.Hut, M.P
Staff of Finance : Moniqa Daratullaura, S.Hut

Division of event

- : 1. Dr. Ir. Mahrus Aryadi, M.Sc
2. Dr. Hafizanoor, S.Hut, M.P.
3. Dr. Drs. Eko Subartono, M.Sc
4. Dr. Yusanto Nugroho, S.Hut, M.P

Division of transportation and accommodation : 1. Dr. Abdi Fitria, S.Hut, M.P
2. Dr. Badaruddin, S.Hut, M.P.
3. Ir. Budi Sutiya, M.P

Division of consumption

- : 1. Hj. Dina Naemah, S.Hut, M.P
2. Yuniarti, S.Hut, M.Si.
3. Rahmiyati, S.Hut

Division of equipment

- : 1. Dr. Adi Rahmadi, S.Hut, M.T
2. Dwi Harsono, S.Hut, M.P.
3. Rofiah, S.Hut

Section of PR, Publication and documentation

- : 1. Ir. Hj. Fonny Rianawati, M.P
2. Tri Wira Yuwati, S.Hut, M.Sc.
3. Ir. Violet Burhanuddin, M.P

INTERNATIONAL SEMINAR

The 1st International Conference on Innovation and Commercialization of Forest Product

Keynote Speaker

Day / Date : Tuesday / November 22nd, 2016

Time : 10.00 - 11.00 WITA

Room : Hortensia Ballroom (4th floor)

No.	Time	Name	Theme
1.	10.00 - 10.15	Ministry of Environment and Forestry	Regulation of Forest Product in Indonesia
2.	10.15 - 10.30	Ministry of Industry	Development of Innovation and Commercialization of Forest Product in Indonesia
3.	10.30 - 10.45	Bupati Tanah Laut	Regulation of Forest Product in Tanah Laut District
4.	10.45 - 11.00	Business Practitioner of Forest Products	Commercializing Agroforestry Food Products: from Smallholders to Global Market

Invited Speaker

Day / Date : Tuesday / November 22nd, 2016

Time : 11.00 - 12.30 WITA

Room : Hortensia Ballroom (4th floor)

No.	Time	Name	Theme
1.	11.00-11.15	Dr. Gerhard Manurung (ICRAF)	Smallholder Agroforestry Systems for Timber and NTFPs Development
2.	11.15-11.30	Ass.Prof. Dr. Futoshi Ishiguri (Utsunomiya Univ. Japan)	Wood Quality of Tropical Trees
3.	11.30-11.45	Prof. Dr. Ir. Fauzi Febrianto, M.Sc (Bogor Agriculture Institute/IPB)	Research Innovation in Forestry Product
4.	11.45-12.00	Prof. Dr. Yudi Firmanul Arifin, M.Sc (Center of Excellence of RC for STFM)	Innovation and Commercialization of Non Timber Forest Product: A Case Study in South Kalimantan Province
5.	12.00-12.15	Ass.Prof. Dr. Mahrus Ariyadi (Center of Excellence of RC for STFM and INAFE)	The Primary Non Timber Forest Product of Some Regencies in South Kalimantan Province

F. SCHEDULE

Time (GMT+7)	Activities	Place
08:00 - 08:30	Registration	Hortensia Ballroom (4th floor)
08:30 - 09:00	Pre-conditions participants in the Main Room Seminar	Hortensia Ballroom (4th floor)
09:00 - 09:30	Minister of Environment and Forestry to enter the Main Room Seminar	Hortensia Ballroom (4th floor)
09:30 - 10:00	Indonesian National Anthem	Hortensia Ballroom (4th floor)
10:00 - 10:30	Speech from Mayor ULM	Hortensia Ballroom (4th floor)
10:30 - 11:00	Reports of the Chairman of the Committee	Hortensia Ballroom (4th floor)
11:00 - 11:30	Opening Paper	Hortensia Ballroom (4th floor)
11:30 - 12:00	Coffee Break	Hortensia Ballroom (4th floor)
12:00 - 12:30	Keynote Speaker (Ministry of Environment and Forestry)	Hortensia Ballroom (4th floor)
12:30 - 13:00	Business Speaker (Ministry of Industry)	Hortensia Ballroom (4th floor)
13:00 - 13:30	Business Speaker (Bupati Tanah Laut)	Hortensia Ballroom (4th floor)
13:30 - 14:00	Speakers from ICRAF (Dr. Gerhard Manurung)	Hortensia Ballroom (4th floor)
14:00 - 14:30	Speakers from Utsunomiya Univ. (Assc.Prof. Dr. Futoshi Ishiguri)	Hortensia Ballroom (4th floor)
14:30 - 15:00	Speakers from Bogor Agriculture Institute/IPB (Prof. Dr. Ir. Fauzi Febrianto, M.Sc)	Hortensia Ballroom (4th floor)
15:00 - 15:30	Speaker of the Research Consortium for STFM (Prof. Dr. Yudi Firmanul Arifin, M.Sc)	Hortensia Ballroom (4th floor)
15:30 - 16:00	Speaker of Research Consortium for STFM and INAFE (Assc.Prof. Dr. Mahrus Ariyadi)	Hortensia Ballroom (4th floor)
16:00 - 16:30	Discussion	Hortensia Ballroom (4th floor)
16:30 - 17:00	Break	Hortensia Ballroom (4th floor)
17:00 - 17:30	Papers Group Session I	Ercila Room (4th floor)
17:30 - 18:00	A. Field of Policy Pulling & Development of Forest Product	Dufalia Room (4th floor)
18:00 - 18:30	B. Field of Innovation & Commercialization of Timber Product	Grandia Room (4th floor)
18:30 - 19:00	C. Field of Innovation & commercialization of Non Timber Forest Product	Hortensia Ballroom (4th floor)
19:00 - 19:30	D. Business meeting	Hortensia Ballroom (4th floor)
19:30 - 20:00	Coffee Break	Hortensia Ballroom (4th floor)
20:00 - 20:30	Papers Group Session II	Hortensia Ballroom (4th floor)
20:30 - 21:00	A. Field of Policy Pulling & Development of Forest Product	Ercila Room (4th floor)
21:00 - 21:30	B. Field of Innovation & Commercialization of Timber Product	Dufalia Room (4th floor)
21:30 - 22:00	C. Field of Innovation & commercialization of Non Timber Forest Product	Grandia Room (4th floor)
22:00 - 22:30	D. Business meeting	Hortensia Ballroom (4th floor)
22:30 - 23:00	The Announcement of Results of Conference	Hortensia Ballroom (4th floor)
23:00 - 23:30	Closing	Hortensia Ballroom (4th floor)
23:30 - 00:00	Preparation Field Trip	Rodhita Hotel
00:00 - 00:30	Gathered in the front of building 1 ULM (Opposite Hotel Rodhita)	Rodhita Hotel
00:30 - 01:00	Coordinating field trips & Coffee Break	Tanah Laut
01:00 - 01:30	Departure to Tanah Laut (Kampung Apisilvikultur)	Telaga Langsat, Tanah Laut
01:30 - 02:00	Meeting and discussion with farmers, wholesalers and small businesses non timber forest products	Balaiung Kabupaten Tanah Laut
02:00 - 02:30	Break	Tebing Siring, Tanah Laut
02:30 - 03:00	To visit the location of agroforestry, apiculture and energy village	Banjarbaru
03:00 - 03:30	Return to Banjarbaru	Banjarbaru

INTERNATIONAL SEMINAR

The 1st International Conference on Innovation and Commercialization of Forest Product

Presenter of Field A : Regulation of Innovation and Commercialization of Forest Product

Day / Date : Tuesday / November 22nd , 2016

Time : 14.00 – 17.30 WITA

Room : Field Room (4th floor)

No	Code	Title	Name	Institution	E-mail
1	A1	Cultural Ecology of Malaysia's Reducing Emissions from Deforestation and Forest Degradation (REDD+)	Ismi Rajiani, Ahmad Rozelan Yunus	1. Lambung Mangkurat University 2. University Teknikal Malaysia Melaka, Malaysia	izmi.rajiani@yahoo.com
2	A2	Agricultural systems Applied at The Production Forest in Indonesia	Wahyudi	Department Of Forestry, Palangka Raya University	wahyudi888@yahoo.com
3	A3	Analysis of Carrying Capacity of Land for Special Economic Zones Tanjung Api-Api in Infrastructure Development	Heni Fitriani, Dinar Dwi Anugrah Putra, Ratna Dewi, Gunawan Tanzil	Civil Engineering, Faculty Of Engineering, Sriwijaya University, 50139 Palembang	Henifitriani79@yahoo.com
4	A4	Closure Structure of The Urban Forest Vegetation as an Optimal Condition for The Environment Balance"	Merryana Kiding Allo	Balai Penelitian dan Pengembangan Lingkungan Hidup dan Kesehatan Makassar	merryamakassar@gmail.com
5	A5	Evaluation of Cost Components to Calculation K Index of Pricing Fresh Fruit Bunch (FFB) Under The Government Regulation (a Case Study)	Muhammad Hudaya, Nur Fatmah, Rawintan Endas Binti, Rifqi Novriyandana, Dahmar	Faculty of Economics and Business, University of Lambung Mangkurat Banjarmasin	moxyriyandana@unlam.ac.id
6	A6	Contributions Subsector Forestry to Domestic Product Gross Based Environmental Values	Jumri	Faculty of Agriculture Forestry Department at The University of Palangkaraya	jumriduliamin@yahoo.co.id
7	A7	Negative Impact Toward Deforestation Economic Value of Forest Plant	Sari Mayawati	Lecturer Faculty of Agriculture, Forestry Department at The University of Palangkaraya	maxvaliumri@yahoo.co.id
8	A8	Information System Development Based Spatial for Sustainable Forest Management In Pulo	Ahmad Jauhari	Faculty of Forestry, University Lambung	ajauhari@unlam.ac.id

9	A9	Policy Analyze to People Forest in Balauang Regency	Hamdani Fauzi	Mangkurat Faculty of Forestry, Lambung Mangkurat University	danie.bastari@gmail.com
10	A10	The Development of Payment Model of Baubau Wono Watershed in Southeast Sulawesi, Indonesia	Safit Kasim	FHIL UHO	safitkasim1970@gmail.com
11	A11	Use Worksheet Dilemma Moral in Problem Ecosystem Forest Through Learning IPA At SMP	Aminuddin Prabatamaputra	FKIP Unlam Banjarmasin	aminuddimpatra@unlam.ac.id
12	A12	Development of Role Model Empowerment for Capital Expenditures in Planning "KUA" and Determination "DPA" Work Unit of Government Regional	Syaiful Rifni	Lecturer At Economics And Business Faculty Universitas Lambung Mangkurat	shufni@yahoo.com
13	A13	Enhancing the Role of Community in Managing Village Forests Through the Development of Non Timber Forest Products	Irt Lestari, Bambang T. Premono	Environment And Forestry Research Institute Of Palembang, Ministry Of Environment And Forestry	lestari@tui.ac.id
14	A14	Non-Timber Forest Products That Are Potentially Developed in Sulawesi	Suhariati, Basir	1. Forestry Research Institute Of Makassar 2. Faculty Of Forestry, Lambung Mangkurat University, Banjarbaru	basir.achmad@unlam.ac.id
15	A15	Urban Forest Management as Part of Sustainable City (Study on Urban Forest Malabar, Malang)	Agus Purnomo, Nevy Partika Aristin, Elynn Normelani.	1. Universitas Negeri Malang 2. Department Of Geography Education Lambung Mangkurat University	agus.purnomo.fis@um.ac.id nevyfarista@unlam.ac.id

INTERNATIONAL SEMINAR

The 1st International Conference on Innovation and Commercialization of Forest Product

Field of Poster

35.	C35	Kalimantan Carrying Capacity of Tabanio Watershed in Tanah Laut Regency	Syarifuddin Kadir, Badaruddin, Nurhina, Ihsan Ridwan, Acep Akbar	Faculty of Forestry, ULM University of Lambung Mangkurat Banjarbaru Environment & Forestry R&D Institute	odeng1987@yahoo.com
36.	C36	The Possibility of Gel Made Of Leaves Used as an Additive Peat Forest Fire Fighting Water	Wahyuni Ilham	Faculty of Forestry, ULM	wicilhan@yahoo.de
37.	C37	Habitat of Local Medicinal Plants Based on Geo-Spatial Information at Sub-District Mandiangin South Kalimantan	Mugarni, Hamdani Fauzi, Mahrus Ariyadi, Taufik Hidayat	Faculty of Forestry, ULM	danic.bastari@gmail.com
38.	C38	Strategy of Non Timber Forest Product (NTFP) Development on Barito Timur Regency, Central Kalimantan	Agus Sukito, Sapzadi Darmawan	Research and Development of Non-Timber Forest Product Technology Unit, Forestry Research and Development Agency (FORDA), Ministry of Environment and Forestry, Mataram City, 83111, Indonesia	sukitokun@gmail.com
39.	C39	Screening of Anti-Diabetes Activity of Agarwood Extracts From <i>Gyrinops versteegii</i> (Gill.) Donke in Lombok Island, Indonesia	Edi Sukaton, Dewi Ardiana Putri and Harhinda Kuspradmi	Faculty of Forestry, Mulawarman University	ediskaton53@gmail.com
40.	C40	Antimicrobial Activity Of The Essential Oil from <i>Cinnamomum parthenoxylon</i>	Harhinda Kuspradmi	Lab. Kimia Hasil Hutan Fakultas Kehutanan Universitas Mulawarman	alimkuspra@gmail.com
41.	C41	Essential Oil Of <i>Actinodaphne</i> Sp	Jalhami Husain	Sam Ratulangi University Mamado	jalhamihusain@yahoo.com
42.	C42	Native Trees for Mined Land Reclamation			

1	P1	Growth Variation of <i>Albizia robusta</i> (Vicia) from Several Families	C. Andriyani, Prasetyawati, Purwanto Budi Santosa	Makassar Environment and Forestry Research Development Institute	andriyani.pras@yahoocoid
2	P2	Utilization Potential of Family Palms Plants in The Majalah Waterfall Area Tanah Laut Regency	M. Arsyad	Lambung Mangkurat University, Faculty of Teacher Training and Education,	muhammadarisyad@ulm.ac.id
3	P3	Medicinal Plants Of The <i>Urena</i> Genus From Indonesia	Dewi Alimah	Banjarbaru Environment and Forestry Research Development Institute	dewi.alimah@yahoo.com
4	P4	Characteristics of Crystal Palm Sugar in The Rutang Kulor Village	Yuniarti ^{1,2} , Fitriani ² , Heni Ariyati ²	1. Fakultas Kehutanan Universitas Lambung Mangkurat, 2. Fakultas Kehutanan Universitas Lambung Mangkurat	yuyun_aep@yahoo.com
5	P5	Model Operational Infrastructure Development of Special Economic Zones Tanjung Api-Api	Dinar dwi anugerah putranto, Heni Fitriani, Gunawan Tanzil, Ratna Dewi	Fakultas Teknik Universitas Sriwijaya	dwi.anugerah@yahoo.com
6	P6	Ecotourism Potential in The Coastal of Marapora River	Muhammad Rahmatullah, Fatmah, Elyn Normelani		sarangiung@gmail.com