

# Review Results

International Journal of GEOMATE



## DAFTAR ISI

---

- Pengantar dari Editor
- 2017-12-07 11-02AM - 18652-Dinar.pdf
- 2017-12-11 10-42AM - 18652-2.pdf
- reviewed 18652-Dinar.pdf

## Fwd: Review Results: Int J of GEOMATE

---

Dari: Zakaria (zakaria@bio.mie-u.ac.jp)

Kepada: dwianugerah@yahoo.co.id; sarinoplg@yahoo.com; yuono\_al@yahoo.co.id; icjuliana78@gmail.com

Tanggal: Senin, 11 Desember 2017 11.52 WIB

---

Dear Authors,

Thanks for your kind contribution. We have reviewers' comments on your paper (attached). Please send the revised paper by maximum of 4 days upon receiving this email. Please send response to reviewers by authors in separate file. An example of "response to reviewers by authors" is attached. Please use the following link:

<http://www.geomatejournal.com/revised>

Best regards.

--

Dr. Zakaria Hossain (Ph.D. Kyoto Univ.)

Professor, Mie University, Japan  
Editor-in-Chief, Int. J. of GEOMATE  
Director, Sci. Eng. & Env. Int. Conf.  
General Secretary, GEOMATE Int. Soc.

[zakaria@bio.mie-u.ac.jp](mailto:zakaria@bio.mie-u.ac.jp)

[society@geomate.org](mailto:society@geomate.org)

[conference@geomate.org](mailto:conference@geomate.org)

[editor@geomatejournal.com](mailto:editor@geomatejournal.com)

<http://www.koku.bio.mie-u.ac.jp/>

<http://www.geomate.org/>

<http://www.confsee.com/>

<http://www.geomatejournal.com/>



Example-Response to reviewer by Author.pdf

18.2kB



2017-12-11 10-42AM - 18652-2.pdf

20.1kB



2017-12-07 11-02AM - 18652-Dinar.pdf

24.7kB



reviewed 18652-Dinar.pdf

837.4kB

## GEOMATE Journal Review and Evaluation

<b>Submission Date</b>	2017-12-07 11:02:11
<b>Paper ID number</b>	18652-Dinar
<b>Paper Title</b>	INTEGRATION OF SURFACE WATER MANAGEMENT IN URBAN AND REGIONAL SPATIAL PLANNING
<b>i. Originality</b>	3
<b>ii. Quality</b>	2
<b>iii. Relevance</b>	3
<b>iv. Presentation</b>	2
<b>v. Recommendation</b>	4
<b>Total (sum of i to v)</b>	14
<b>General comments</b>	<p>It is noted that the research objective is clear while the investigation method is sound, although the abstract was not well written. Great effort required to conduct such a research. Reasonable discussions and presentation of figures and tables can also be found throughout the paper.</p> <p>Although English is not their first language, I can feel that this paper still need much work to improve English writings.</p> <p>The author is required to resubmit an improved version with respect to Abstract, Conclusion and English grammar. There are many big mistakes in grammar which I cannot approve acceptance at this stage.</p> <p>I can recommend acceptance of the paper, provided that the paper has been further revised.</p> <p>Find attached the file for the changes required.</p>
<b>Mandatory changes</b>	<p>It is noted that the research objective is clear while the investigation method is sound, although the abstract was not well written. Great effort required to conduct such a research. Reasonable discussions and presentation of figures and tables can also be found throughout the paper.</p> <p>Although English is not their first language, I can feel that this paper still need much work to improve English writings.</p> <p>The author is required to resubmit an improved version with respect to Abstract, Conclusion and English grammar. There are many big mistakes in grammar which I cannot approve acceptance at this stage.</p> <p>I can recommend acceptance of the paper, provided that the paper has been further revised.</p> <p>Find attached the file for the changes required.</p>
<b>Upload file (if any)</b>	<a href="#">reviewed 18652-Dinar.pdf</a>

## GEOMATE Journal Review and Evaluation

<b>Submission Date</b>	2017-12-11 10:42:41
<b>Paper ID number</b>	18652-2
<b>Paper Title</b>	INTEGRATION OF SURFACE WATER MANAGEMENT IN URBAN AND REGIONAL SPATIAL PLANNING
<b>i. Originality</b>	3
<b>ii. Quality</b>	3
<b>iii. Relevance</b>	5
<b>iv. Presentation</b>	3
<b>v. Recommendation</b>	5
<b>Total (sum of i to v)</b>	19
<b>General comments</b>	This paper can be accepted with the following changes.
<b>Mandatory changes</b>	<ol style="list-style-type: none"><li>1. Abstract: Rewrite in concise form. Add some results and conclusions in abstract</li><li>2. Introduction: Add more references in introduction</li><li>3. Conclusions: Add more results in conclusions</li><li>4. List of references: Follow template</li></ol>
<b>Reviewer's E-mail (Remove before sending to author)</b>	

# INTEGRATION OF SURFACE WATER MANAGEMENT IN URBAN AND REGIONAL SPATIAL PLANNING

\*Putranto DA Dinar<sup>1</sup>, Sarino<sup>2</sup>, Yuono AL<sup>3</sup>, Juliana Ch Imroatul<sup>4</sup>, and Hamim SA<sup>5</sup>

<sup>1</sup>Post Graduate Program; <sup>2,3,4</sup> Faculty of Engineering, University of Sriwijaya, Indonesia

\*Corresponding Author, Received: 15 Oct. 2017, Revised: 00 Nov. 2017, Accepted: 00 Dec. 2017

**ABSTRACT:**The rapid growth of industry and urbanization has accelerated the transfer of land functions in urban areas. The impact of the land use change has changed the drainage patterns in the existing sub-basin area. The main effects of changes in drainage patterns are flooding and puddles as a result of excessive runoff. Run-off problems with flood peak and inundation characteristics, in addition to being influenced by factors as mentioned above are also influenced by the influence of tides, sedimentation and river pollutants from upstream and other small rivers in the area. However, the connection between management and spatial planning cannot follow what is written in abstract....  
What is the main objective?  
no ref in abstract!

The connection between management and spatial planning cannot follow what is written in abstract....  
What is the main objective?  
no ref in abstract!

On the basis of this, the time of rain, tidal height, was modeled using spatial analysis and water management. The use of the duflow model is used for tracking in rivers [1]. The inundation distribution occurs by combining the results of hydrodynamic analysis and spatial analysis. Palembang Metropolitan Area is a National Strategic Plan that will be realized as a new Metropolitan City of Palembang, Betung, and Inderalaya. Hydrologically, the Patung Raya Metropolitan City Plan have Lambidaro sub chatment with high critical level, because if the rain is more than one hour, the puddle height reaches 1.5 - 2.5 m above means sea level.

*Keywords: Flooding and Puddles, Run-off, Water Management, Inundation, Spatial Planning*

## 1. INTRODUCTION

Changes land use in some areas of the city in Indonesia is so fast, due to rapid urbanization and industrial development. These changes are almost entirely done by reclamation of swamps, the utilization of river banks, and conversion of forest land and agricultural land. The impact of changes in land use has changed the patterns of water drainage in sub-basin areas that exist in urban areas. The main effects of changes in drainage patterns are flooding and puddles as a result of excessive runoff [2].

Human activities have a very significant impact on water quantity, water quality and aquatic ecology. As a result, the dangers of flooding, household and industrial waste, which, after accumulating for a long time, are unlikely to return to normal or require enormous costs for recovery.

Run-off problems with peak flood and inundation characteristics are influenced by several factors, such as urbanization, unsuitable landfill, tidal effects, as well as sedimentation and river-flow pollutants from upstream areas and other small rivers that form the sub-watersheds in the area.

Flow management capability, run-off mitigation, infiltration and water quality all have relevance to land use conditions. However, the connection between the water management system

and spatial planning is one of the important keys that must be done if they want to play a role in reducing the danger of flooding. However, in reality in every spatial arrangement, the two systems, namely spatial planning and water management are never done together. On this basis, an analysis of hydrotopographic conditions, type of land cover, duration and time of rain, tidal height, are modelled using spatial analysis, in order to support decision-making for spatial management and water management.

## 2. CITY DEVELOPMENT AND FLOOD PROBLEM

Similar to the development of several regions in Indonesia, the province of South Sumatra has the development of cities that are very significant. It can be seen from the population growth which averagely reached 2.13% with the population of 7,446,401 in 2010 [2] of which , 1,452,840 are in Palembang (19.5%). If the average population growth in South Sumatera remains at 2.13%, then it is estimated that in 2030, the population in South Sumatera province will reach 317,216,683 people and 42.6% will be in Palembang City.

With such a large population growth, there will be concentration of population in big cities in South Sumatera Province especially in Palembang City, which will cause expansion of land use for

various urban activities. The expansion that will change the various functions of the "water park" land, is transformed into a wake-up land, irrespective of the watershed ecosystem.

Based on data from BMKG (2010), the highest rainfall in South Sumatera Province is 18 - < 34.87 mm / day and the peak rainfall in November, and the lowest rainfall <18 mm / day, occurs every May-August. Surface water is difficult to predict its spread in space and time. While the observation system of discharge is done using AWLR in several locations along the river, many of which are not functioning properly. This has caused many problems to predict the occurrence of peak flood and areas that will occur. In October (2016), the city of Lubuk Linggau, and several sub-districts in Musi Rawas district have experienced floods, the city of Sekayu and several sub-districts in Musi Banyuasin regency in September (2016), Inderalaya city and several subdistricts in Ogan Ilir Regency (October, 2016 ), Kayu Agung city and several sub-districts in Ogan Komering Ilir regency, Pangkalan Balai City and several subdistricts in Banyuasin regency, and Palembang City itself always experiences flood every rain with high intensity.

Efforts to control floods have been undertaken by several cities that often experience floods every year. In Jakarta City by building a flood canal and make a hole biopore. In Semarang City, by building a polder system. But all of them have not yet shown that the problem of annual floods can be overcome. All flood control systems, must depart from existing watershed ecosystem conditions. From these conditions, It requires new

analysis by simulation to determine the flood discharge of each return period, which finally can be used to determine the appropriate drainage system in the area [3]. Thus a specific approach through more useful and accurate techniques is necessary. Transforming data into a Geographic Information System using Multi criteria Spatial Analysis in decision making [4] can be used as a policy combination solution and technical, and also as a model in presenting the watershed environmental conditions for better data quality and analysis [5].

## 2.1 Case Study

Palembang Raya Metropolitan Area (Patung Raya), is a National Strategic Plan that will be implemented as a new Metropolitan City of Palembang Raya [6]. The new metropolitan area of Patung Raya covers Palembang, Betung, and Inderalaya city.

Hydrologically, the Patung Raya Metropolitan City Plan is located in four sub-basins, namely Komerling Sub-basin (9,199.916 Km<sup>2</sup>), Ogan sub-basin (9,415.88 km<sup>2</sup>), Batang Peledas sub-basin (848,898 km<sup>2</sup>) and Musi part of downstream (2.258,154 km<sup>2</sup>) and the four are located in the territory of the Musi River Basin [7]. The quality of the condition of the four sub-basins is in critical condition (51.6%), somewhat critical (27.65%), and only 4.98% non-critical [8]. The most widespread area of critical condition is Ogan sub Basin (76.56%), second critical condition is Musi part of downstream sub-basin (56.64%) and Komerling sub basin up to 46.35% (Figures 1).

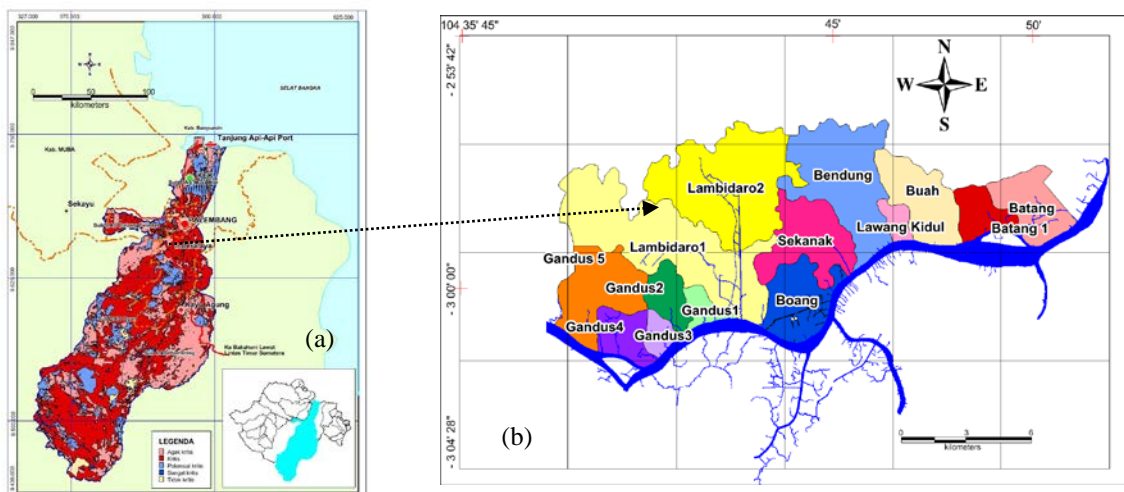


Fig.1 (a) Sub-basin area of metropolitan Patung Raya plan; (b) Lambidaro sub basin at Musi downstream sub basin area

### 3. METHODOLOGY

To anticipate the amount of runoff water, due to inappropriate land allocation, multicriteria analysis is needed in every decision of land allocation. Land Allocation Management System (SIMAL) is a watershed analysis system developed using GIS or Geographic Information System (GIS) using land use change parameters, morphometry and hydrometry of DAS [9].

#### 3.1 Research Site

As a study material is to explain the effect of surface runoff on land use change, the location of the study is the Lambidaro sub-basin (Figure 1b), which is one of 16 sub-basins that form the drainage system of Palembang and discharges into the Musi River, through the city of Palembang. With an area of 65.42 Km<sup>2</sup>.

#### 3.2 Research Data

The data used in this research are river hydrometry data, longitudinal cross section ( $l$ ) and river cross ( $b$ ), river slope ( $ls$ ) and area ( $A$ ) and density ( $r$ ). While spot height data and land use are needed to analyze the infiltration coefficient ( $c$ ) and time concentration ( $tc$ ). And the ever-changing dynamic data is the rainfall data ( $R$ ) needed to calculate the rain intensity ( $I$ ) in each sub-watershed.

#### 3.3 Research Methods

The method used in this research is using hydrology model and Geographic Information System (GIS). The hydrological model used is to use HEC-HMS, while the hydrodynamic model used to calculate the amount of runoff that occurs is with Duflow which will also be used to track flood flow in rivers [9].

Hydrodynamic analysis was performed on selected river sub-systems that have been obtained from the results of cluster analysis. This analysis utilizes the 1D (Duflow) non-steady flow model with the maximum rainfall intensity conditions of the 25th anniversary period of the previous hydrological analysis results as well as the results of tidal observation forecasting at the sub-systems of selected river sub-systems. The first stage in hydrodynamic analysis by establishing a scheme of hydrodynamic network in sub watershed adapted to the results through terrain morphology and terrain processing analysis on ARCGIS-ARC Hydro and field conditions, then incorporating the dimensions of water structure, cross section, boundary conditions (tidal, rain Results of hydrological analysis) and flow discharge. After

calculation of each segment / cross section will be obtained some hydraulic parameters such as flood water level, water flow rate, channel flow and water level in river and channel.

The inundation distribution occurring in the sub-river system is obtained by combining the results of hydrodynamic analysis and spatial analysis. The water level in the river and the channel is interpolated to obtain the distribution of water level in the selected river sub system. Then the distribution of water level is arranged with topographic condition of river sub system in the form of DEM 5m x 5m so as to obtain the distribution of classified high pools that occur in each selected river sub-system with 25th anniversary period.

With several scenarios of land use change it can be seen how much the changes in inundation height due to land use change in the selected sub-system. This scenario is used as a way to see the condition of sub-system of river which in turn will influence the pattern of river environmental control that will be done. The first scenario is to change the type of land use so that the value of  $C$  tends to decrease which becomes an indicator of the condition of the river sub system becomes better. The second scenario by changing the type of land use so that the value of  $C$  tends to increase, this condition can explain that a river sub system has a condition that is considered to be disturbed.

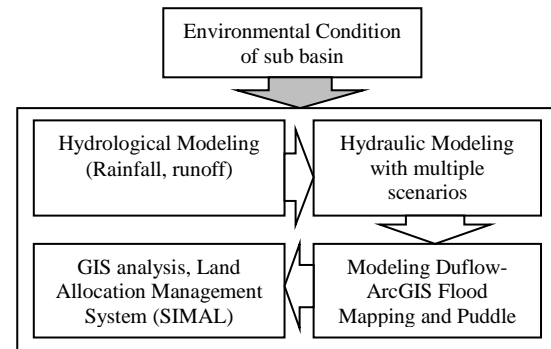


Fig. 2 Flow Chart of research methods

## 4. RESULTS AND DISCUSSION

### 4.1 Correlation Between Surface Run-off with Morphometric Characteristic Variable

This correlation is analyzed to address the problem of spatial relationships between land use and sub-basin morphometry and its effect on the extent of surface runoff. The strong correlation between independent variables (characteristic of sub-basin morphometry) and dependent variable of runoff ( $Q$ ), is seen through Pearson correlation value. Correlation values range from -1,000 to 1,000. The value of -1.000 shows a very strong but

negative correlation, while the value of 1,000 indicates a very strong correlation / very closely directed positively.

The results of the analysis (at 99% confidence level) obtained the correlation value between variables very high runoff ( $Q$ ) ranges from 0.849 to 0.999 with variable length of river order ( $x_1$ ), river length ( $x_2$ ), watershed ( $x_3$ ), roving watershed ( $x_4$ ), average  $Rb$  ( $x_5$ ), Flow density ( $x_6$ ), Texture ratio ( $x_8$ ), Roughness number  $Rn$  ( $x_{10}$ ).

This means that there is a strongly significant relationship between runoff and long river order, river length, basin area, perimeter watershed, average  $Rb$ , flow density, texture ratio, roughness number  $Rn$ . While the value of strong correlation is seen between runoff with  $Tc$  concentration time of 0.629. This means at a significance level of 5% or a 95% confidence level, there is a strong relationship between runoff and concentration time ( $Tc$ ). The correlation value is strong enough at flow frequency ( $x_7$ ), relief ( $x_9$ ) and green area (forest, tree, shrub, yard / yard, rice field, field, garden) ( $x_{14}$ ). Low correlation value between runoff and variable flow coefficient  $C$  ( $x_{12}$ ) of 0.319 with significant level and negative correlation of 0.234 for variable circularity ratio  $Rc$  ( $x_{13}$ ).

#### 4.2 Characteristic of Lambidaro sub Basin

As an example of frequent inundation in the Lambidaro sub-basin especially in the downstream area and around the floodplain, during the rainy season and high tides. Lambidaro sub basin with

an area of 65.25 km<sup>2</sup> is a sub watershed which has different morphometric characteristics with other sub watersheds. Based on the drainage pattern it is divided into two sub-watersheds namely part of left Lambidaro Sub-watershed and part of right Lambidaro sub-watershed which leads to the Musi river. The morphometric characteristics of the Lambidaro watershed are shown in Figure 3. Land utilization in the Lambidaro sub-basin is dominated by shrubs, trees, fields and forests ranging from 72%, settlements ranging from 4.74% to potentially changing land use, such as for settlement development. Settlement construction mainly occurs in right Lambidaro sub-watershed close to the main road / outer shaft of Palembang City (Musi dua bridge). At part of left Lambidaro sub basin is dominated by bushes and swamps. The sub-watershed of Lambidaro river has varying altitude less than 10 m msl in estuary area up to 36 m in upstream area. The percentage of the slope is dominated by 0-3% and more than 8% with a maximum height of 36 msl in the upstream area. River conditions are still natural, especially in part of left Lambidaro, while some rivers in part of right Lambidaro sub basin have been normalized by cliff reinforcement.

With the condition of land use, slope, flow density and soil type, the range of runoff coefficient in Lambidaro sub-basin shows the runoff coefficient value of 0.66. This means that 34% of the total rainfall falls on the Lambidaro river sub-basin can still be infiltrated (see Figure 3).

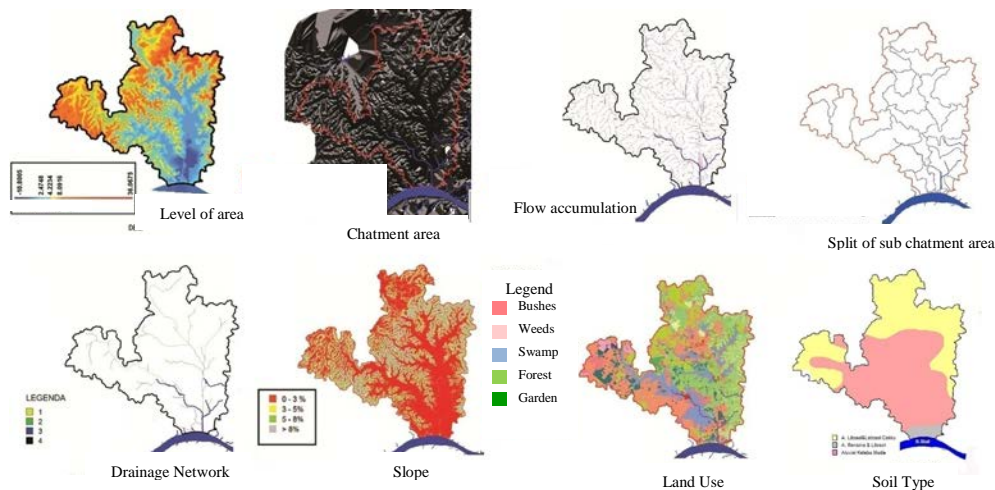


Fig. 3 Characteristic of morfometry Lambidaro sub basin

#### 4.3 Hydrodynamic model of Lambidaro watershed

The simulation of the Duflow-ArcGIS model was conducted on the Lambidaro watershed. Schematic of the water system based on DEM

extraction with flow patterns that resulted in sub-basin and drainage line boundaries to illustrate runoff on the floodwaters constructed first (Fig. 4). The Lambidaro sub-basin network scheme was built by entering the cross-profile data as well as extending the channels per segment based on the



measurement results in the field. Channel width ranges from 11 - 18 m. The boundary conditions for the Duflow model consist of upper boundary conditions such as runoff from upstream Lambidaro watershed and downstream boundary conditions, such as water levels at the mouth of the Lambidaro river. The rainfall hydrology parameter was taken from the analysis of the distribution of maximum daily rainfall by Gumbell method for a 25-year period of 163 mm / day. The weighted C values of each Lambidaro sub-basin were calculated from the results of spatial analysis of land use, slope, soil type and flow density per sub-watershed as shown in Fig. 4b. Water level in certain segments of drainage network of Lambidaro watershed is shown in Figure 4c. The results of the hydrodynamic modeling, the existing conditions of the Lambidaro sub watershed were approached with a 25-year return period scenario.

The water level on each segment is then transformed into the DEM sub of the Lambidaro

sub basin, and interpolated by the Arc GIS procedure to obtain the inundation distribution that will occur for the 25 year anniversary scenario. The results of the analysis of the distribution of inundation of Lambidaro sub-basin were classified into six classifications, namely: (1) unlogged areas, (2) flooded with altitude less than 0.25 m, (3) altitude 0.25 - 0.5 m, (4) Altitude of 0.5-0.75 m, (5) altitude of 0.75-1 m and (6) heights of more than 1 m. Result of hydrodynamic modeling using Duflow model followed by analysis of inundation distribution that will occur with 25 year period return scenario seen as in Fig. 4d. The flooded areas of the Lambidaro sub-basin are the areas of flow accumulation and from field observations are low areas with a slope of 0-3% with the type of land use in swamp dominance. The calibration of this model is shown by the high suitability of inundation that occurs in the field with  $R^2= 0.869$ .

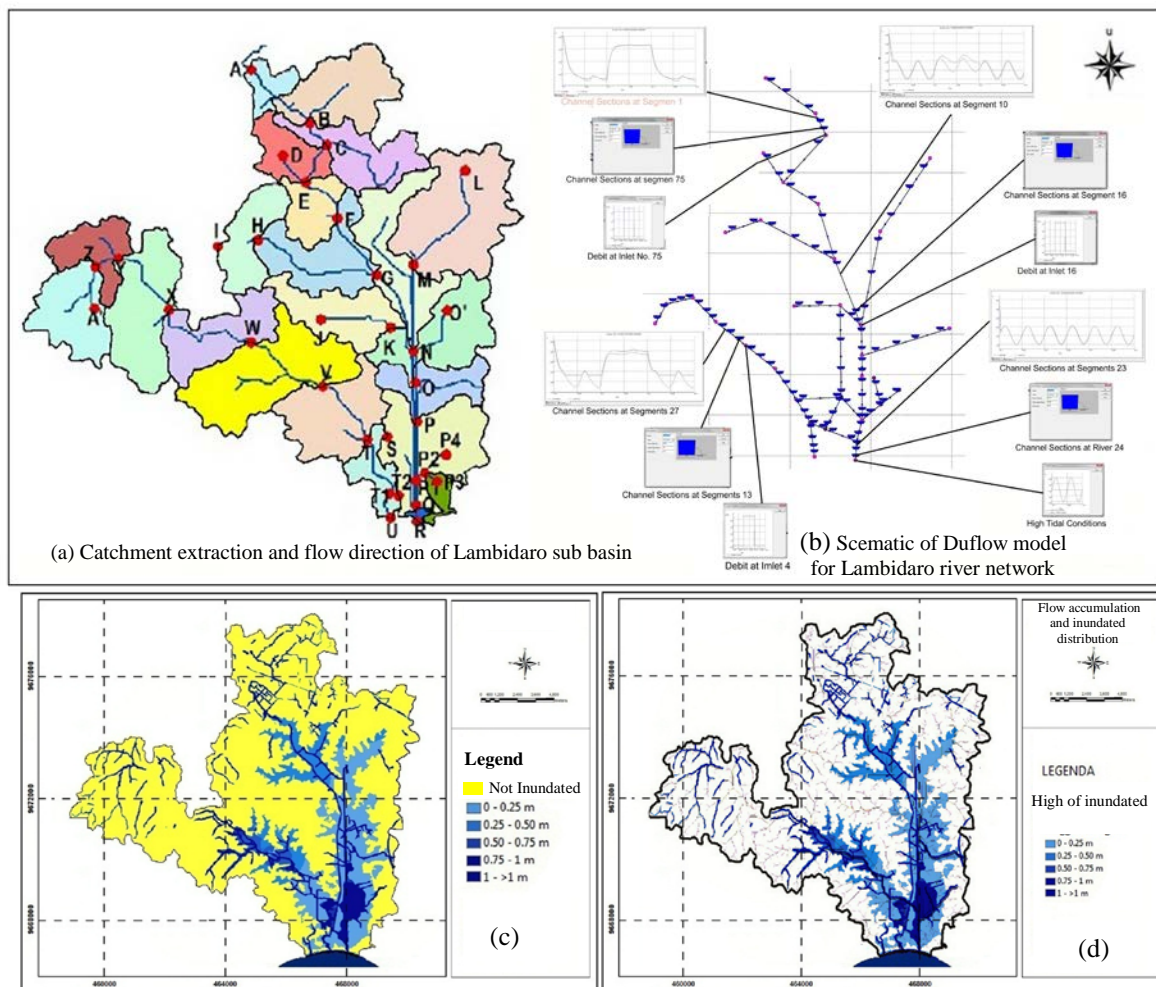


Fig. 4 Drainage network flood simulation of Lambidaro sub basin: (a) Chatment extraction and flow direction of Lambidaro sub basin (b) Schematic and drainage network; (c) distribution of inundation due to land use change; (d) the puddle area is assembled with flow accumulation

The influence of inundation in the upper Lambidaro watershed is 756.81 ha, 2821,6 ha and downstream 513,23 ha. As for the part of left Lambidaro sub-watershed, upstream area of

1854.5 ha, middle 380.5 ha and downstream 131.1 ha. The distribution of inundation stacked with Lambidaro sub-basin can be seen in Figure 5.

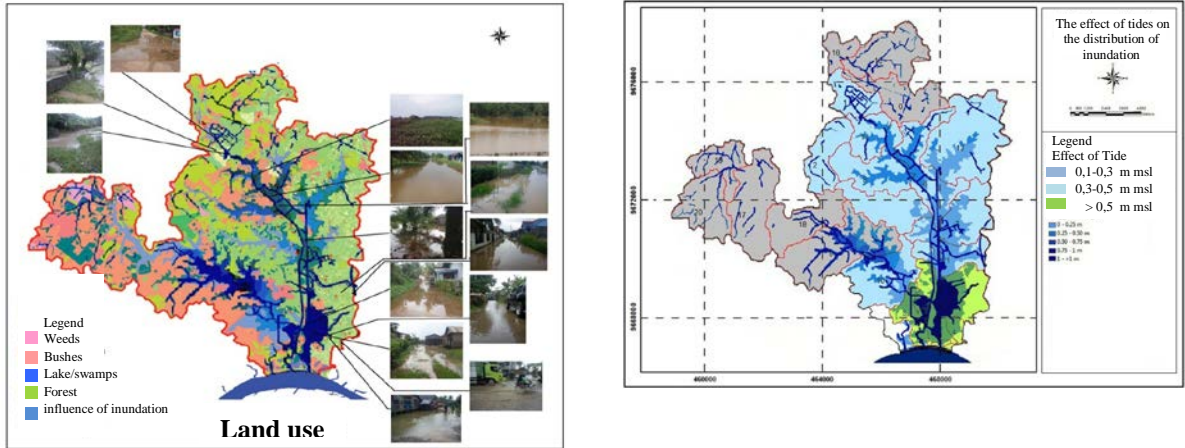


Fig. 5 Distribution of inundation is arranged with Lambidaro sub-waters upstream, middle and downstream

#### 4.4 Land use change scenarios

Zoning scenario to see the effect of land use change on the inundation distribution that will

occur in Lambidaro sub basin. Land use change scenario is made as many as 5 scenarios, namely :

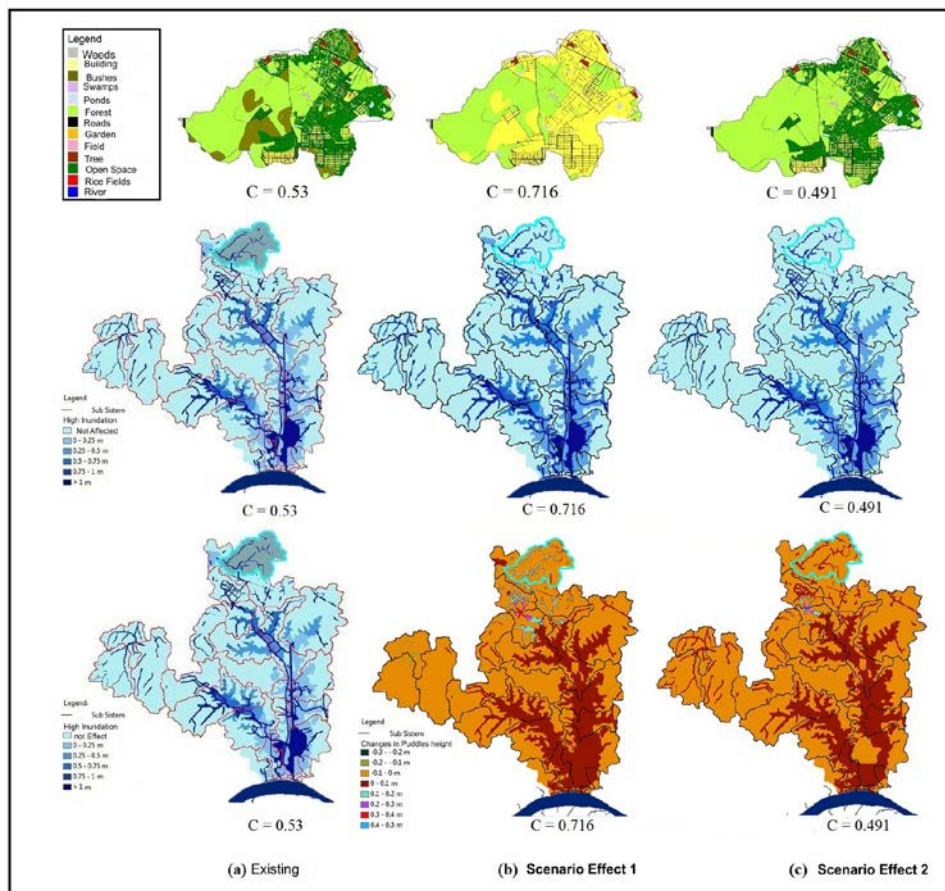


Fig. 6 Effects of land use change of Lambidaro upstream basin

- (1) The first scenario by changing the type of land use area that is still possible to be converted into green area (urban forest, park) so it can decrease the value of C.
- (2) The second scenario by changing the type of land utilization of Lambidaro sub-basin of the right section that may still be converted into a settlement (see the current city development) resulting in an increase in the value of C.
- (3) The third scenario similar to the first scenario is only done on the part of left Lambidaro sub basin.
- (4) The fourth scenario is the same as the second scenario only done on the part of left Lambidaro sub basin.
- (5) The fifth scenario by changing land use with different C values ranging from 0.2 to 0.9

Some of the effects of land use change scenarios on upstream, mid and downstream sub watersheds by minimizing and increasing the value of the runoff coefficient C per sub-watershed were done to reduce and increase the value of C in Fig. 6.

This is not a responsible conclusion

## 5. CONCLUSION

- (1) Drainage capacity of Lambidaro River averaging 14.25 m<sup>3</sup> / s, is unable to flow water discharge 25 year return period of 52,43 m<sup>3</sup> / s
- (2) The flood discharge of the 25-year return period resulted in 609.01 hectares or about 1.1% of the total Lambidaro river sub basin. The duration of the puddle varied from 3 hours to 59 hours with a puddle height between 0.01 m from the elevation of the left bank of the river +2, 5 m to 1.80 m from the river right bank elevation + 1.5m

## 6. ACKNOWLEDGMENTS

Acknowledgments are submitted to the Directorate of Research and Community Service, Ministry of Research Technology and Higher Education, for the support of Research Grants Higher Education grants for the period of study 2016-2018.

## 7. REFERENCE

- [1] Veena Srinivasan, Steven M. Gorelick, and Lawrence Goulder, Sustainable urban water supply in south India: Desalination, efficiency improvement, or rainwater harvesting, *Water Resour. Res.* 46, W10504, doi:10.1029/2009 2010.
- [2] Flood modeling for mitigation and management of drainage system of Palembang city, Research report, LPPM-UNSRI, 2008, 1-6
- [4] Bana E, Costa CA, Da Silva PA, Nunes Correia F *Multicriteria Evaluation of Flood Control Measures: The Case of Ribeirado Livramento. Water Resour Manag*, 2004, 18 (21): 263–283
- [5] SA Hamim, F Sjarkowi, Dinar DA Putranto, Totok G, *Model control of river sub-system environment in management of drainage system of Palembang City*, Dissertation, Doctor of Environmental science, post graduate program University of Sriwijaya, 2013 , pV 4-6
- Government Regulation no. 26, The National Spatial Plan, The secretariat of the Republic of Indonesia, 2008
- [7] Puspics-UGM “Preparation of Integrated Musi River Basin Management Plan”, Musi River Basin Management Area, Research Report, 2013, 77-80
- [8] Dinar DA Putranto, Sarino, and Yuono AL, “Digital field model for rainfall-runoff modeling of sedimentation analysis regionally in the Mus basin”, research report, University of Sriwijaya, 2015
- [9] Province of South Sumatera, *Revised Regional Spatial Plan of South Sumatera Province Year 2016-2036*, 2016, p III 1-6

---

Copyright © Int. J. of GEOMATE. All rights reserved, including the making of copies unless permission is obtained from the copyright proprietors.

---

# Forward from Author

International Journal of GEOMATE



## ISI

---

- Revised 1
- Response by Author

On Sat, Dec 16, 2017 at 5:19 AM, Dinar DA Putranto <[noreply@jotform.com](mailto:noreply@jotform.com)> wrote:

18652 : Dinar DA Putranto : Journal Revised paper

Paper ID number	18652
Revised Title	INTEGRATION OF SURFACE WATER MANAGEMENT IN URBAN AND REGIONAL SPATIAL PLANNING
Title/Position	Dr
Full Name	Dinar DA Putranto
E-mail	<a href="mailto:dwianugerah@yahoo.co.id">dwianugerah@yahoo.co.id</a>
Co-authors E-mails	<a href="mailto:dwianugerah@yahoo.co.id">dwianugerah@yahoo.co.id</a>
Revised Paper (Word)	<a href="https://www.jotformpro.com/uploads/geomate/60163517932959/3891783877318713186/Revise%20%20Putranto%2C%20Int%20J%20GEOMATE.doc">https://www.jotformpro.com/uploads/geomate/60163517932959/3891783877318713186/Revise%20%20Putranto%2C%20Int%20J%20GEOMATE.doc</a>
Response to Reviewers	<a href="https://www.jotformpro.com/uploads/geomate/60163517932959/3891783877318713186/Response%20by%20Authors%20to%20Reviewer.docx">https://www.jotformpro.com/uploads/geomate/60163517932959/3891783877318713186/Response%20by%20Authors%20to%20Reviewer.docx</a>
Copyright	<a href="https://www.jotformpro.com/uploads/geomate/60163517932959/3891783877318713186/Response%20by%20Authors%20to%20Reviewer.pdf">https://www.jotformpro.com/uploads/geomate/60163517932959/3891783877318713186/Response%20by%20Authors%20to%20Reviewer.pdf</a>

You can edit this submission and view all your submissions easily

# INTEGRATION OF SURFACE WATER MANAGEMENT IN URBAN AND REGIONAL SPATIAL PLANNING

\*Putranto DA Dinar<sup>1</sup>, Sarino<sup>2</sup>, Yuono AL<sup>3</sup>, Juliana Ch Imroatul<sup>4</sup>, and Hamim SA<sup>5</sup>

<sup>1</sup>Post Graduate Program; <sup>2,3,4</sup> Faculty of Engineering, University of Sriwijaya, Indonesia

\*Corresponding Author, Received: 15 Oct. 2017, Revised: 00 Nov. 2017, Accepted: 00 Dec. 2017

**ABSTRACT:** The rapid growth of industry and urbanization has accelerated the transfer of land functions in urban areas. These changes are mostly done by reclamation of swamps, riparian land use, agriculture and forest land conversion. The main effects of changes in drainage patterns are flooding and puddles as a result of excessive runoff. Run-off problems with the characteristics of flood peaks and inundation, in addition to being influenced by several factors as above are also influenced by the influence of tides, sedimentation and river flow pollutants from upstream and other small rivers which forms a sub-watershed in the area. The ability to manage surface flow, run-off mitigation, infiltration and water quality all have a connection with spatial planning. But in reality in every spatial arrangement, the two systems, namely spatial management and water management are never done together. On the basis of this, it is necessary to analyze the conditions of the watershed hydrometry, the type of land cover, the duration and the time of rain, the tidal height, which is modeled spatially, in order to support in decision making for spatial management and water management. Palembang Metropolitan City is one of the major cities on the island of Sumatra, which is regionally included in the Musi Watershed area. Hydrologically Palembang City is located at the mouth of the Musi river, with an altitude of less than 20 m above the mean sea level. When the maximum rainfall in the Watershed Area, Palembang City will be affected, where runoff on the sub-watershed in Palembang city can not be channeled the main channel through Palembang City, due to the tide of Musi river water. This study aims to show the relationship between watershed hydrometry, land use change management, rain intensity, and tidal influences on the watershed area, with various scenarios that will affect the runoff discharge and distribution of inundation that occur in the watershed area. Taking a case study of the Lambidaro sub-basin, in the Palembang city area, all sub-basin parameters that have been tested and are modeled by a duflow to calculate the extent of runoff and flood flow tracking in the river. The inundation distribution occurring in the sub watershed was obtained by combining the results of hydrodynamic analysis and spatial analysis. Based on the results obtained it is concluded that there is a strong spatial relationship between land use and sub-basin morphometry and its effect on the extent of surface runoff.

**Keywords:** *Land Use Change, flooding and puddles, Run-off, spatial Management*

## 1. INTRODUCTION

Changes land use in some areas of the city in Indonesia is so fast, due to rapid urbanization and industrial development. These changes are almost entirely done by reclamation of swamps, the utilization of river banks, and conversion of forest land and agricultural land. The impact of changes in land use has changed the patterns of water drainage in sub-basin areas that exist in urban areas. The main effects of changes in drainage patterns are flooding and puddles as a result of excessive runoff [1].

Human activities have a very significant impact on water quantity, water quality and aquatic ecology. As a result, the dangers of flooding, household and industrial waste, which, after accumulating for a long time, are unlikely to return to normal or require enormous costs for recovery.

Run-off problems with peak flood and inundation characteristics are influenced by several

factors, such as urbanization, unsuitable landfill, tidal effects, as well as sedimentation and river-flow pollutants from upstream areas and other small rivers that form the sub-watersheds in the area [2].

Flow management capability, run-off mitigation, infiltration and water quality all have relevance to land use conditions. However, the connection between the water management system and spatial planning is one of the important keys that must be done if they want to play a role in reducing the danger of flooding. However, in reality in every spatial arrangement, the two systems, namely spatial planning and water management are never done together. On this basis, an analysis of hydrotopographic conditions, type of land cover, duration and time of rain, tidal height, are modelled using spatial analysis, in order to support decision-making for spatial management and water management [3].

## 2. CITY DEVELOPMENT AND FLOOD PROBLEM IN SOUTH SUMATERA AREA

Similar to the development of several regions in Indonesia, the province of South Sumatra has the development of cities that are very significant. It can be seen from the population growth which averagely reached 2.13% with the population of 7,446,401 in 2010 [4] of which , 1,452,840 are in Palembang (19.5%). If the average population growth in South Sumatra remains at 2.13%, then it is estimated that in 2030, the population in South Sumatera province will reach 317,216,683 people and 42.6% will be in Palembang City.

With such a large population growth, there will be concentration of population in big cities in South Sumatera Province especially in Palembang City, which will cause expansion of land use for various urban activities. The expansion that will change the various functions of the "water park" land, is transformed into a wake-up land, irrespective of the watershed ecosystem.

Based on data from BMKG (2010), the highest rainfall in South Sumatera Province is 18 - < 34.87 mm / day and the peak rainfall in November, and the lowest rainfall <18 mm / day, occurs every May-August. Surface water is difficult to predict its spread in space and time. While the observation system of discharge is done using AWLR in several locations along the river, many of which are not functioning properly. This has caused many problems to predict the occurrence of peak flood and areas that will occur. In October (2016), the city of Lubuk Linggau, and several sub-districts in Musi Rawas district have experienced floods, the city of Sekayu and several sub-districts in Musi Banyuasin regency in September (2016), Inderalaya city and several subdistricts in Ogan Ilir Regency (October, 2016 ), Kayu Agung city and several sub-districts in Ogan Komering Ilir regency, Pangkalan Balai City and several subdistricts in Banyuasin regency, and Palembang City itself always experiences flood every rain with high intensity.

Efforts to control floods have been undertaken by several cities that often experience floods every year. In Jakarta City by building a flood canal and make a hole biopore. In Semarang City, by building a polder system. But all of them have not yet shown that the problem of annual floods can be overcome. All flood control systems, must depart from existing watershed ecosystem conditions. From these conditions, It requires new analysis by simulation to determine the flood discharge of each return period, which finally can be used to determine the appropriate drainage system in the area [5]. Thus a specific approach through more useful and accurate techniques is necessary. Transforming data into a Geographic

Information System using Multi criteria Spatial Analysis in decision making [6] can be used as a policy combination solution and technical, and also as a model in presenting the watershed environmental conditions for better data quality and analysis [7].

### 2.1 Case Study

As an example of frequent inundation in the Lambidaro sub-basin especially in the downstream area and around the floodplain, during the rainy season and high tides. Lambidaro sub basin with an area of 65.25 km<sup>2</sup> is a sub watershed which has different morphometric characteristics with other sub watersheds. Based on the drainage pattern it is divided into two sub-watersheds namely part of left Lambidaro Sub-watershed and part of right Lambidaro sub-watershed which leads to the Musi river.

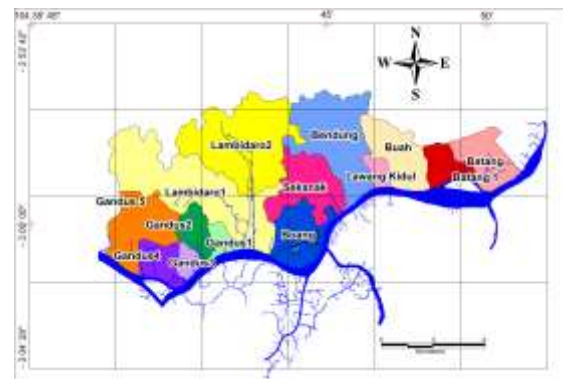


Fig.1 Lambidaro sub basin at Musi downstream sub basin area

## 3. METHODOLOGY

To anticipate the amount of runoff water, due to inappropriate land allocation, multicriteria analysis is needed in every decision of land allocation. Land Allocation Management System (SIMAL) is a watershed analysis system developed using GIS or Geographic Information System (GIS) using land use change parameters, morphometry and hydrometry of DAS [8].

### 3.1 Research Site

As a study material is to explain the effect of surface runoff on land use change, the location of the study is the Lambidaro sub-basin (Figure 1), which is one of 16 sub-basins that form the drainage system of Palembang and discharges into the Musi River, through the city of Palembang. With an area of 65.42 Km<sup>2</sup>.

### 3.2 Research Data

The data used in this research are river hydrometry data, longitudinal cross section ( $l$ ) and river cross ( $b$ ), river slope ( $ls$ ) and area ( $A$ ) and density ( $r$ ). While spot height data and land use are needed to analyze the infiltration coefficient ( $c$ ) and time concentration ( $tc$ ). And the ever-changing dynamic data is the rainfall data ( $R$ ) needed to calculate the rain intensity ( $I$ ) in each sub-watershed.

### 3.3 Research Methods

The method used in this research is using hydrology model and Geographic Information System (GIS). The hydrological model used is to use HEC-HMS, while the hydrodynamic model used to calculate the amount of runoff that occurs is with Duflow which will also be used to track flood flow in rivers [9].

Hydrodynamic analysis was performed on selected river sub-systems that have been obtained from the results of cluster analysis. This analysis utilizes the 1D (Duflow) non-steady flow model with the maximum rainfall intensity conditions of the 25th anniversary period of the previous hydrological analysis results as well as the results of tidal observation forecasting at the sub-systems of selected river sub-systems. The first stage in hydrodynamic analysis by establishing a scheme of hydrodynamic network in sub watershed adapted to the results through terrain morphology and terrain processing analysis on ARCGIS-ARC Hydro and field conditions, then incorporating the dimensions of water structure, cross section, boundary conditions (tidal, rain Results of hydrological analysis) and flow discharge. After calculation of each segment / cross section will be obtained some hydraulic parameters such as flood water level, water flow rate, channel flow and water level in river and channel.

The inundation distribution occurring in the sub-river system is obtained by combining the results of hydrodynamic analysis and spatial analysis. The water level in the river and the channel is interpolated to obtain the distribution of water level in the selected river sub system. Then the distribution of water level is arranged with topographic condition of river sub system in the form of DEM 5m x 5m so as to obtain the distribution of classified high pools that occur in each selected river sub-system with 25th anniversary period.

With several scenarios of land use change it can be seen how much the changes in inundation height due to land use change in the selected sub-system. This scenario is used as a way to see the condition of sub-system of river which in turn will

influence the pattern of river environmental control that will be done. The first scenario is to change the type of land use so that the value of  $C$  tends to decrease which becomes an indicator of the condition of the river sub system becomes better. The second scenario by changing the type of land use so that the value of  $C$  tends to increase, this condition can explain that a river sub system has a condition that is considered to be disturbed.

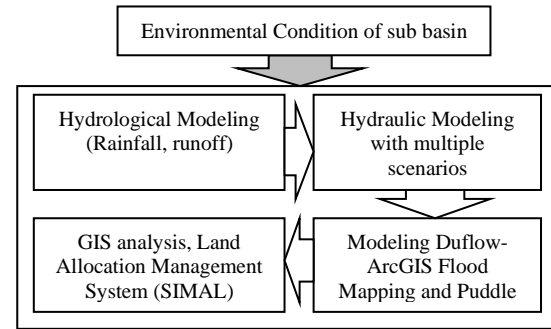


Fig. 2 Flow Chart of research methods

## 4. RESULTS AND DISCUSSION

### 4.1 Correlation Between Surface Run-off with Morphometric Characteristic Variable

This correlation is analyzed to address the problem of spatial relationships between land use and sub-basin morphometry and its effect on the extent of surface runoff. The strong correlation between independent variables (characteristic of sub-basin morphometry) and dependent variable of runoff ( $Q$ ), is seen through Pearson correlation value. Correlation values range from -1,000 to 1,000. The value of -1.000 shows a very strong but negative correlation, while the value of 1,000 indicates a very strong correlation / very closely directed positively.

The results of the analysis (at 99% confidence level) obtained the correlation value between variables very high runoff ( $Q$ ) ranges from 0.849 to 0.999 with variable length of river order ( $x_1$ ), river length ( $x_2$ ), watershed ( $x_3$ ), roving watershed ( $x_4$ ), average  $Rb$  ( $x_5$ ), Flow density ( $x_6$ ), Texture ratio ( $x_8$ ), Roughness number  $Rn$  ( $x_{10}$ ).

This means that there is a strongly significant relationship between runoff and long river order, river length, basin area, perimeter watershed, average  $Rb$ , flow density, texture ratio, roughness number  $Rn$ . While the value of strong correlation is seen between runoff with  $Tc$  concentration time of 0.629. This means at a significance level of 5% or a 95% confidence level, there is a strong relationship between runoff and concentration time ( $Tc$ ). The correlation value is strong enough at flow frequency ( $x_7$ ), relief ( $x_9$ ) and green area (forest,



tree, shrub, yard / yard, rice field, field, garden) ( $x_{14}$ ). Low correlation value between runoff and variable flow coefficient  $C$  ( $x_{12}$ ) of 0.319 with significant level and negative correlation of 0.234 for variable circularity ratio  $R_c$  ( $x_{13}$ ).

#### 4.2 Characteristic of Lambidaro sub Basin

The morphometric characteristics of the Lambidaro watershed are shown in Figure 3. Land utilization in the Lambidaro sub-basin is dominated by shrubs, trees, fields and forests ranging from 72%, settlements ranging from 4.74% to potentially changing land use, such as for settlement development. Settlement construction mainly occurs in right Lambidaro sub-watershed close to the main road / outer shaft of Palembang City (Musi dua bridge). At part of left Lambidaro

sub basin is dominated by bushes and swamps. The sub-watershed of Lambidaro river has varying altitude less than 10 m msl in estuary area up to 36 m in upstream area. The percentage of the slope is dominated by 0-3% and more than 8% with a maximum height of 36 msl in the upstream area. River conditions are still natural, especially in part of left Lambidaro, while some rivers in part of right Lambidaro sub basin have been normalized by cliff reinforcement.

With the condition of land use, slope, flow density and soil type, the range of runoff coefficient in Lambidaro sub-basin shows the runoff coefficient value of 0.66. This means that 34% of the total rainfall falls on the Lambidaro river sub-basin can still be infiltrated (see Figure 3).

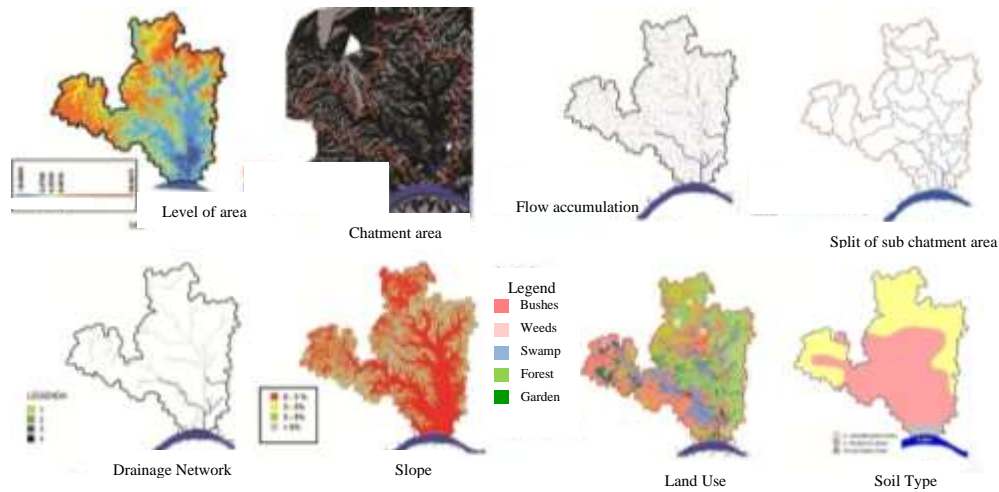


Fig. 3 Characteristic of morfometry Lambidaro sub basin

#### 4.3 Hydrodynamic model of Lambidaro watershed

The simulation of the Duflow-ArcGIS model was conducted on the Lambidaro watershed. Schematic of the water system based on DEM extraction with flow patterns that resulted in sub-basin and drainage line boundaries to illustrate runoff on the floodwaters constructed first (Fig. 4). The Lambidaro sub-basin network scheme was built by entering the cross-profile data as well as extending the channels per segment based on the measurement results in the field. Channel width ranges from 11 - 18 m. The boundary conditions for the Duflow model consist of upper boundary conditions such as runoff from upstream Lambidaro watershed and downstream boundary conditions, such as water levels at the mouth of the Lambidaro river. The rainfall hydrology parameter was taken from the analysis of the distribution of maximum daily rainfall by Gumbell method for a

25-year period of 163 mm / day. The weighted  $C$  values of each Lambidaro sub-basin were calculated from the results of spatial analysis of land use, slope, soil type and flow density per sub-watershed as shown in Fig. 4b. Water level in certain segments of drainage network of Lambidaro watershed is shown in Figure 4c. The results of the hydrodynamic modeling, the existing conditions of the Lambidaro sub watershed were approached with a 25-year return period scenario.

The water level on each segment is then transformed into the DEM sub of the Lambidaro sub basin, and interpolated by the Arc GIS procedure to obtain the inundation distribution that will occur for the 25 year anniversary scenario. The results of the analysis of the distribution of inundation of Lambidaro sub-basin were classified into six classifications, namely: (1) unlogged areas, (2) flooded with altitude less than 0.25 m, (3) altitude 0.25 - 0.5 m, (4) Altitude of 0.5-0.75 m, (5) altitude of 0.75-1 m and (6) heights of more than 1

m. Result of hydrodynamic modeling using Duflow model followed by analysis of inundation distribution that will occur with 25 year period return scenario seen as in Fig. 4d. The flooded areas of the Lambidaro sub-basin are the areas of

flow accumulation and from field observations are low areas with a slope of 0-3% with the type of land use in swamp dominance. The calibration of this model is shown by the high suitability of inundation that occurs in the field with  $R^2 = 0.869$ .

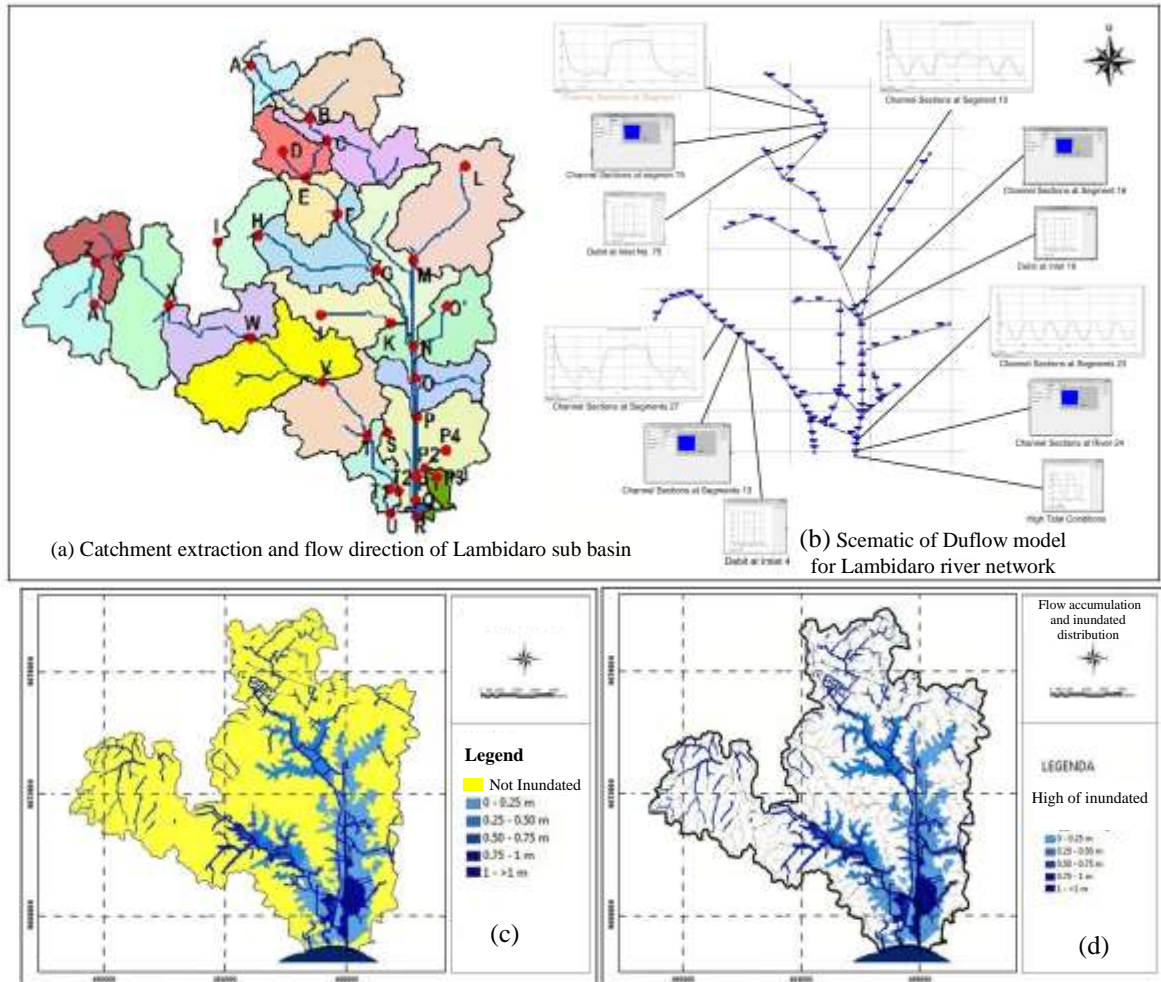


Fig. 4 Drainage network flood simulation of Lambidaro sub-basin: (a) Chatment extraction and flow direction of Lambidaro sub-basin (b) Scematic and drainage network; (c) distribution of inundation due to land use change; (d) the puddle area is assembled with flow accumulation

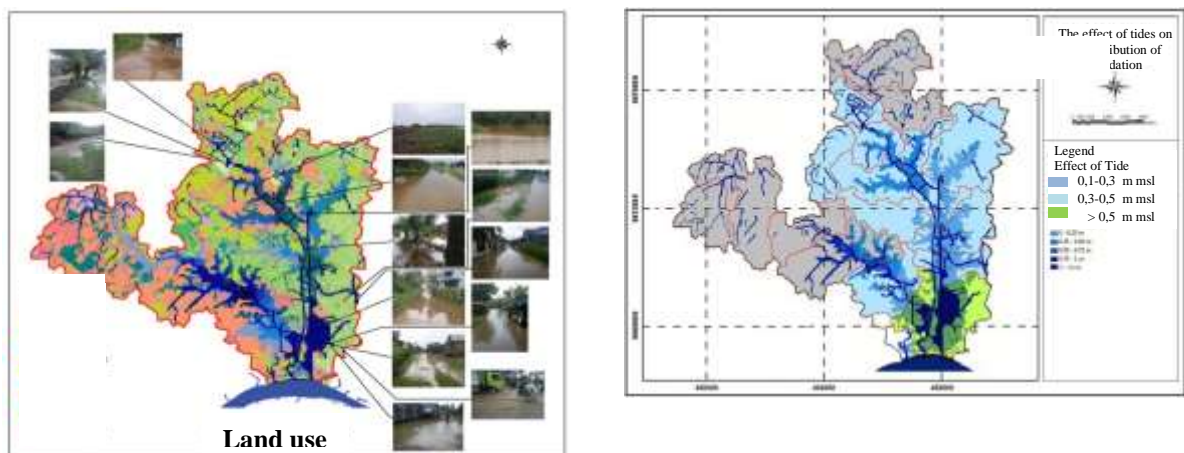


Fig. 5 Distribution of inundation is arranged with Lambidaro sub-waters upstream, middle and downstream

The influence of inundation in the upper Lambidaro watershed is 756.81 ha, 2821,6 ha and downstream 513,23 ha. As for the part of left Lambidaro sub-watershed, upstream area of 1854.5 ha, middle 380.5 ha and downstream 131.1 ha. The distribution of inundation stacked with Lambidaro sub-basin can be seen in Figure 5.

#### 4.4 Land use change scenarios

Zoning scenario to see the effect of land use change on the inundation distribution that will occur in Lambidaro sub basin. Land use change scenario is made as many as 5 scenarios, namely :

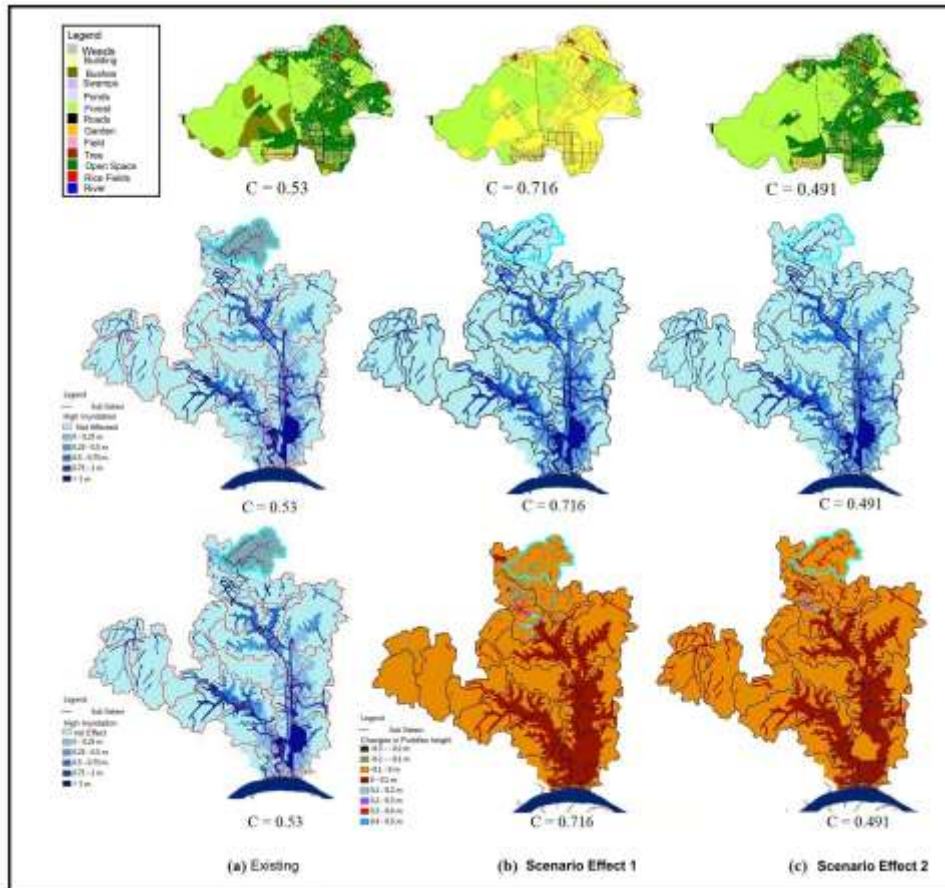


Fig. 6 Effects of land use change of Lambidaro upstream basin

- (1) The first scenario by changing the type of land use area that is still possible to be converted into green area (urban forest, park) so it can decrease the value of C.
- (2) The second scenario by changing the type of land utilization of Lambidaro sub-basin of the right section that may still be converted into a settlement (see the current city development) resulting in an increase in the value of C.
- (3) The third scenario similar to the first scenario is only done on the part of left Lambidaro sub basin.
- (4) The fourth scenario is the same as the second scenario only done on the part of left Lambidaro sub basin.
- (5) The fifth scenario by changing land use with different C values ranging from 0.2 to 0.9

Some of the effects of land use change scenarios on upstream, mid and downstream sub watersheds by minimizing and increasing the value of the runoff coefficient C per sub-watershed were done to reduce and increase the inundation shown in Fig. 6.

#### 5. CONCLUSION

1. There is a strongly significant relationship between runoff and river length, watershed area, perimeter watershed, average Rb, flow density, texture ratio, roughness number Rn.
2. There is a strong relationship between runoff and concentration time (Tc).

3. The correlation is strong enough on the Frequency of flow and Relief with the forest area
4. The effect of land-use change with several scenarios made in the Lambidaro sub-basin proves that if land use change is not well controlled, the extent of the inundation will extend from downstream, middle to upstream

#### ACKNOWLEDGMENTS

Acknowledgments are submitted to the Directorate of Research and Community Service, Ministry of Research Technology and Higher Education, for the support of Research Grants Higher Education grants for the period of study 2016-2018.

#### 7. REFERENCE

- [1] B.J.M, Goes, S.E. Howarth, R.B, Wardlaw, I.R, Hancock and U.N. Parajuli, Integrated water resources management in an insecure river basin: a case study of Helmand River Basin, Afghanistan, International Journal of water resources Development, 2014, Volume 32, 2016 Issue 1
- [2] Rosmalinda Permatasari, Dantje Kardana natakusumah, Arwin Sabar, Determining Peak Discharge Factor Using Synthetic Unit Hydrograph Modelling (Case Study : Upper Komering South Sumatera, Indonesia), International Journal of Geomate, 2017, Vol. 13, Issue 36, pp.1-5
- [3] Seemanta S. Bhagabati, Akiyuki Kawasaki, Consideration of the rainfall-run-off-inundation (RRI) Model for flood mapping in a deltaic area of Myanmar, Hydrological Research Letter, 2017
- [4] Province of South Sumatera, *Revised Regional Spatial Plan of South Sumatera Province Year 2016-2036*, 2016, p III 1-6
- [5] Dinar DA Putranto, Sarino, AL, Yuono, Flood modeling for mitigation and management of drainage system of Palembang city, Research report, LPPM-UNSRI, 2008, 1-6
- [6] Bana E, Costa CA, Da Silva PA, Nunes Correia F *Multicriteria Evaluation of Flood Control Measures: The Case of Ribeirado Livramento. Water Resour Manag*, 2004,18 (21): 263–283
- [7] Majid Mirzael, Application of a rainfall-runoff model for regional-scale flood inundation mapping for the Langat River Basin, International Journal of GEOMATE, 2017
- [8] SA Hamim, F Sjarkowi, Dinar DA Putranto, Totok G, *Model control of river sub-system environment in management of drainage system of Palembang City*, Disertation, Doctor of Environmental science, post graduate program University of Sriwijaya, 2013 , p 4-16
- [9] Government Regulation no. 26, The National Spatial Plan, The secretariat of the Republic of Indonesia, 2008
- [10] Puspics-UGM “Preparation of Integrated Musi River Basin Management Plan”, Musi River Basin Management Area, Research Report, 2013, 77-80
- [11] Dinar DA Putranto, Sarino, and Yuono AL, “Digital field model for rainfall-runoff modeling of sedimentation analysis regionally in the Mus basin”, research report, University of Sriwijaya, 2015
- [12] Province of South Sumatera, *Revised Regional Spatial Plan of South Sumatera Province Year 2016-2036*, 2016, p III 1-6

---

Copyright © Int. J. of GEOMATE. All rights reserved, including the making of copies unless permission is obtained from the copyright proprietors.

---

Response by Authors to Reviewer's Remarks/Comments

## Integration of Surface Water Management in Urban and Regional Spatial Planning

**Authors: \*Putranto DA Dinar<sup>1</sup>, Sarino<sup>2</sup>, Yuono AL<sup>3</sup>, Juliana Ch Imroatul<sup>4</sup>, and Hamim SA<sup>5</sup>**

The authors have summarized their replies to the Reviewers' comments in this response letter in a two column format. A revised manuscript is submitted addressing all the comments to the Journal of GEOMATE for possible publication.

No.	Reviewer A's Comments	Authors Response
	It is noted that the research objective s clear while the nvestigation method s sound, although the abstract was not well written. Great effort required to conduct such a research. Reasonable discussions and presentation of figures and tables can also be found throughout the paper	The authors are grateful for the appreciation of the reviewers of the research that the author has done, although the writing in the feel is still very less, especially in the grammar written in English.  Upon appreciation, the author tries to write back with some revisions that may still be lacking, but the author's hope to be re-assessed for improvements can the author do better in accordance with the provisions in the necessary publication.
1.	Abstract: Rewrite in concise form Add some results and conclusions n abstract	Improvements to the abstract have been done by the author. Likewise additions to the conclusions and objectives to be achieved.
2.	Introduction: Add more references n ntroduction	The addition of reference to the introduction has been done by the author
3.	Conclusions: Add more resuts n conclusions	Conclusions have been improved in accordance with the objectives to be achieved in research
4.	List of references: Foow template	Reference writing has been adapted to the existing template

DR. Ir. Dinar Dwi Anugerah Putranto, MSPJ



Dr. Imroatul Chalimah Juliana, S.T., M.T



Ir. Sarino, MSCE



Agus Lesrti Yuono, ST,MT



# Review Results 2

International Journal of GEOMATE



## ISI

---

- Pengantar dari Editor
- Correction 2

## Re: 18652 : Dinar DA Putranto : Journal Revised paper

---

Dari: Zakaria (zakaria@bio.mie-u.ac.jp)

Kepada: dwianugerah@yahoo.co.id; yuono\_al@yahoo.co.id

Tanggal: Kamis, 21 Desember 2017 16.00 WIB

---

Thanks.

Your revised paper has been examined by our external referees and then re-evaluated in-house. You will be pleased to know that your revised paper has been provisionally accepted. Congratulations.

For necessary action, please pay publication fees of 800USD using the following link. Deadline: 28 Dec. 2017.

<http://www.geomatejournal.com/payment>

After your payment confirmation, we would take necessary action.

Best regards.

Editor-in-Chief  
International Journal of GEOMATE

-----  
Dr. Zakaria Hossain (Ph.D. Kyoto Univ.)  
Professor, Mie University, Japan  
Editor-in-Chief, Int. J. of GEOMATE  
[editor@geomatejournal.com](mailto:editor@geomatejournal.com)  
<http://www.koku.bio.mie-u.ac.jp/>  
<http://www.geomatejournal.com/>  
-----

〒514-8507 津市栗真町屋町1577  
三重大学大学院生物資源学研究科  
共生環境学専攻地域保全工学講座  
国際環境保全学研究分野・教授  
保世院 座狩屋（ホセイン ザカリア）  
電子メール：[zakaria@bio.mie-u.ac.jp](mailto:zakaria@bio.mie-u.ac.jp)  
電話番号：059-231-9578 (内線：9578)  
ファックス：059-231-9578  
-----

On Sat, Dec 16, 2017 at 5:19 AM, Dinar DA Putranto <[noreply@jotform.com](mailto:noreply@jotform.com)> wrote:



### 18652 : Dinar DA Putranto : Journal Revised paper

Paper ID number	18652
Revised Title	INTEGRATION OF SURFACE WATER MANAGEMENT IN URBAN AND REGIONAL SPATIAL PLANNING
Title/Position	Dr.
Full Name	Dinar DA Putranto
E-mail	<a href="mailto:dwianugerah@yahoo.co.id">dwianugerah@yahoo.co.id</a>

# Forward from Author 2

International Journal of GEOMATE



## ISI

---

- Bukti Pembayaran 1
- Bukti Pembayaran 2 (Kelebihan lembar paper)



## Pembayaran Anda kepada 保世院 座狩屋

Dari: service@intl.paypal.com (service@intl.paypal.com)

Kepada: dwianugerah@yahoo.co.id

Tanggal: Selasa, 26 Desember 2017 16.35 WIB



**Anda telah mengirim pembayaran sebesar \$800,00 USD kepada 保世院 座狩屋.**

26 Des 2017 16:35:26 GMT+07:00  
No. Resi:2676-9858-1486-9195

Halo DINAR DWI ANUGERAH,

Tagihan ini akan muncul di laporan kartu kredit Anda sebagai pembayaran kepada PAYPAL \*BAOSHIYUANZ.

**Informasi pedagang:**

保世院 座狩屋  
gi.premi@gmail.com  
<http://www.gi-j.com>  
592225561

**Petunjuk untuk pedagang:**

Tidak ada yang diberikan

**Informasi pengiriman:**

DINAR DWI ANUGERAH  
BUKIT SEJAHTERA DA-02  
PALEMBANG, SUMATERA SELATAN  
30139  
Indonesia

**Metode pengiriman:**

Tidak ditentukan

Keterangan	Harga satuan	Kuantitas	Jumlah
100 USD	\$100,00 USD	8	\$800,00 USD
			Diskon: -\$0,00 USD
			<b>Total:</b> \$800,00 USD

**Nomor Resi: 2676-9858-1486-9195**

Simpanlah nomor resi ini untuk rujukan di masa mendatang. Anda akan memerlukannya jika menghubungi layanan pelanggan di 保世院 座狩屋 atau PayPal.

**Gunakan PayPal pada kesempatan berikutnya!**

Sepertinya Anda sudah memiliki rekening PayPal.

Saat berbelanja online, checkout akan lebih cepat dan lebih mudah menggunakan PayPal. Informasi keuangan Anda tersimpan dengan aman dan tidak pernah diungkapkan kepada pedagang saat Anda membayar.

Terima Kasih,  
PayPal

[Bantuan](#) | [Pusat Keamanan](#)

Jangan balas email karena kami tidak memantau kotak masuk ini. Untuk menghubungi kami, log in ke rekening Anda, lalu klik "Hubungi Kami" di bagian bawah halaman apapun.

Hak Cipta © 1999-2017 PayPal Inc. Semua hak dilindungi undang-undang.

Saran untuk konsumen: PayPal Pte Ltd, Pemilik fasilitas nilai tersimpan pembayaran PayPal™, tidak memerlukan persetujuan dari Otoritas Keuangan Singapura. Konsumen (pengguna) disarankan untuk membaca [syarat dan ketentuan](#) dengan cermat.

ID Email PayPal PP1469 - fbe6569da54dd

## Pembayaran Anda kepada 保世院 座狩屋

Dari: service@intl.paypal.com (service@intl.paypal.com)

Kepada: dwianugerah@yahoo.co.id

Tanggal: Rabu, 9 Januari 2019 19.41 WIB



**Anda telah mengirim pembayaran sebesar  
\$100,00 USD kepada 保世院 座狩屋.**

09 Jan 2019 19:40:54 GMT+07:00  
No. Resi:1681-9630-8571-3058

Halo Dinar Dwi Anugerah,

Tagihan ini akan muncul di laporan kartu kredit Anda sebagai pembayaran kepada PAYPAL  
\*BAOSHIYUANZ.

**Lakukan pembayaran dengan lebih cepat di lain waktu - buat rekening PayPal**

Membayar dengan PayPal lebih aman dan lebih cepat. Anda hanya memerlukan email dan sandi ke rekening PayPal saat berbelanja online berikutnya.

[Daftar Sekarang](#)

**Berbelanja dengan nyaman**

Lakukan pembelian dengan beberapa klik. Cukup masukkan email dan sandi Anda saat membayar dengan PayPal.

**Berbelanja dengan lebih aman**

Pedagang tidak akan melihat rincian keuangan Anda karena kami menyimpannya secara aman.

**Berbelanja dengan penuh percaya diri**

Dapatkan uang Anda kembali untuk pembelian yang tidak diterima atau ternyata berbeda. [Pelajari lebih lanjut](#)

**Informasi pedagang:**

保世院 座狩屋  
gi.premi@gmail.com  
http://www.gi-j.com  
592225561

**Petunjuk untuk pedagang:**

Tidak ada yang diberikan

**Informasi pengiriman:**

Dinar Dwi Anugerah  
Bukit Sejahera DA-02  
Jl. Raya Inderalaya Km.32  
Palembang, SUMATRA SELATAN  
50139  
Indonesia

**Metode pengiriman:**

Tidak ditentukan

Keterangan	Harga satuan	Kuantitas	Jumlah
100 USD	\$100,00 USD	1	\$100,00 USD
			Diskon: -\$0,00 USD
			<b>Total:</b> \$100,00 USD

**Nomor Resi: 1681-9630-8571-3058**

Simpanlah nomor resi ini untuk rujukan di masa mendatang. Anda akan memerlukannya jika

menghubungi layanan pelanggan di 保世院 座狩屋 atau PayPal.

---

Terima Kasih,  
PayPal

[Bantuan](#) | [Pusat Keamanan](#)

Jangan balas email karena kami tidak memantau kotak masuk ini. Untuk menghubungi kami, log in ke rekening Anda, lalu klik "Hubungi Kami" di bagian bawah halaman apapun.

Hak Cipta © 1999-2019 PayPal Inc. Semua hak dilindungi undang-undang.

Saran untuk konsumen: PayPal Pte Ltd, Pemilik fasilitas nilai tersimpan pembayaran PayPal™, tidak memerlukan persetujuan dari Otoritas Keuangan Singapura. Konsumen (pengguna) disarankan untuk membaca [syarat dan ketentuan](#) dengan cermat.

ID Email PayPal PP1469 - cb9abb1f1ba7b

# Review Results 3

International Journal of GEOMATE



## ISI

---

- Pengantar dari Editor
- Final Galley proof for Issue Number 45

## Fwd: Final Galley proof for Issue Number 45

---

Dari: Zakaria (zakaria@bio.mie-u.ac.jp)

Kepada: dwianugerah@yahoo.co.id; sarinoplg@yahoo.com; yuono\_al@yahoo.co.id; icjuliana78@gmail.com

Tanggal: Jumat, 12 Januari 2018 14.58 WIB

---

Dear Authors,

Attached herewith, please see the galley proof paper for final checking. Please note that this is the final correction and after this checking, you will not be able to change anything later on. As many grammatical errors found, please use the following **free link for English grammar corrections of your galley proof paper**.

<https://www.grammarly.com/office-addin/windows>

Please do not change the format if any correction. Please send **PDF version (Publishable Format)** of your galley proof paper by 4 days from the date of this email using the following link.

<http://www.geomatejournal.com/galley>

We accept online submission only.

Best regards.

Prof. Dr. Zakaria Hossain  
Editor-in-Chief  
International Journal of GEOMATE



sample 1-signed by all authors.pdf  
168.8kB



sample 2-signed by all authors.pdf  
90.8kB



28-34-18652-Dinar-May-2018.docx  
4MB

# INTEGRATION OF SURFACE WATER MANAGEMENT IN URBAN AND REGIONAL SPATIAL PLANNING

\*Putranto DA Dinar<sup>1</sup>, Sarino<sup>2</sup>, Yuono AL<sup>3</sup>, Juliana Ch Imroatul<sup>4</sup>, and Hamim SA<sup>5</sup>

<sup>1</sup>Post Graduate Program; <sup>2,3,4</sup>Faculty of Engineering, University of Sriwijaya, Indonesia

\*Corresponding Author, Received: 15 Oct. 2017, Revised: 16 Dec. 2017, Accepted: 20 Jan. 2017

**ABSTRACT:** It is necessary to analyze the conditions of the watershed hydrometry, the type of land use, the duration and the time of rain, the tidal height, which is modeled spatially, in order to support in decision making for spatial management and water management. Palembang Metropolitan City is one of the major cities on the island of Sumatra, which is regionally included in the Musi Watershed area. Hydrologically Palembang City is located at the mouth of the Musi river, with an altitude of less than 20 m above the mean sea level. When the maximum rainfall occurs in the watershed Area, Palembang City will be affected by tidal water, and runoff on the sub-watershed in Palembang city can not be flowed through the main channel within Palembang City, due to the tide of Musi river water. This study aims to show the relationship between watershed hydrometry, land use change management, rain intensity, and tidal influences on the watershed area, with various scenarios that will affect the runoff discharge and distribution of inundation that occur in the watershed area. Taking a case study of the Lambidaro sub-basin, in the Palembang City area, all sub-basin parameters that have been tested were modeled by a using duflow to calculate the extent of runoff and flood flow tracking in the river. The inundation distribution occurring in the sub watershed was obtained by combining the results of hydrodynamic analysis and spatial analysis. Based on the results obtained it is concluded that there is a strong spatial relationship between land use and sub-basin morphometry and its effect on the extent of surface runoff.

**Keywords:** *Land Use Change, flooding and puddles, Run-off, spatial management*

## 1. INTRODUCTION

Land use changes in some areas of the city in Indonesia is so fast, due to rapid urbanization and industrial development. These changes are almost entirely done by reclamation of swamps, the utilization of river banks, and conversion of forest land and agricultural land. The impact of changes in land use has changed the patterns of water drainage in sub-basin areas that exist in urban areas. The main effects of changes in drainage patterns are flooding and puddles as a result of excessive runoff [1].

Human activities have caused very significant impact on water quantity, water quality and aquatic ecology. As the result, the dangers of flooding, household and industrial waste, which, after accumulating for a long time, are unlikely to return to normal or require enormous costs for recovery.

Run-off problems with peak flood and inundation characteristics are influenced by several factors, such as urbanization, unsuitable landfill, tidal effects, as well as sedimentation and river-flow pollutants from upstream areas and other small rivers that form the sub-watersheds in the area [2].

Flow management capability, run-off mitigation, infiltration and water quality all have relevance to land use conditions. Furthermore, the connection between the water management system

and spatial planning is one of the important keys that must be done if they want to play a role in reducing the danger of flooding. However, in reality in every spatial arrangement, the two systems, namely spatial planning and water management have never been integrated. On this basis, an analysis of hydro topographic conditions, type of land cover, duration and time of rain, tidal height, are modeled using spatial analysis, in order to support decision making for spatial management and water management [3].

## 2. CITY DEVELOPMENT AND FLOOD PROBLEM IN SOUTH SUMATERA AREA

Similar to the development of several regions in Indonesia, the province of South Sumatra has the development of cities that is very significant. It can be seen from the population growth which averagely reached 1.44% with the population of 7,481,200 in 2010 [4] of which, 1,468,000 are in Palembang (19.62%). If the average population growth in South Sumatra remains at 1.88%, then it is estimated that in 2030, the population in South Sumatra province will reach 10,166,760 people and 18.97% will be in Palembang City.

With such a large population growth, there will be concentration of population in big cities in South Sumatra Province especially in Palembang City, which will cause expansion of land use for

various urban activities. The expansion that will change the various functions of the water reservoir land, is transformed into a developed one, and will neglect the watershed ecosystem.

Based on data from BMKG (2010), the highest rainfall in South Sumatera Province is 18 - <34.87 mm/day and the peak rainfall in November, and the lowest rainfall <18 mm/day, occurs every in May-August. Surface water is difficult to predict in relation to space and time distribution. While the AWLR which is used to record water level in several locations along the river has not worked properly. This has caused much constraints to predict the occurrence of peak flood and areas that will occur. In October (2016), the city of Lubuk Linggau, and several sub-districts in Musi Rawas district have experienced floods, the city of Sekayu and several sub-districts in Musi Banyuasin regency in September (2016), Inderalaya city and several sub-districts in Ogan Ilir Regency (October, 2016), Kayu Agung city and several sub-districts in Ogan Komering Ilir regency, Pangkalan Balai City and several sub-districts in Banyuasin regency, and Palembang City itself always experiences flood in every rainy season with high intensity.

Efforts to control floods have been undertaken by several cities that often experience floods every year. In Jakarta City floodway canal and biopore has been made and in Semarang City, a polder system has been also built. But all of them have not yet shown that the problem of annual floods can be overcome. All flood control systems, must depart from existing watershed ecosystem conditions. From these conditions, It requires new analysis by simulation to determine the flood discharge with each return period, which finally can be used to determine the appropriate drainage system in the area [5]. Thus a specific approach through more useful and accurate techniques is necessary. Transforming data into a Geographic Information System using Multicriteria Spatial Analysis in decision making [6] can be used as a policy and technical combination solution and technical, and also as a model in presenting the watershed environmental conditions for better data quality and analysis [7].

### 2.1 Case Study

As an example of frequent inundation in the Lambidaro sub-basin especially in the downstream area and around the floodplain, during the rainy season and high tides is Lambidaro sub basin with an area of 65.25 km<sup>2</sup> is a sub watershed which has different morphometric characteristics from other sub watersheds. Based on the drainage pattern it is divided into two sub-watersheds namely part of left Lambidaro (Lambidaro-1) Sub-watershed and

part of right Lambidaro (Lambidaro-2) sub-watershed which leads to the Musi river.

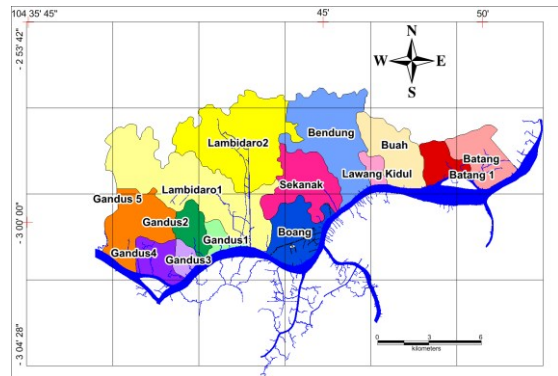


Fig.1 Lambidaro sub-basin at Musi downstream sub-basin area

## 3. METHODOLOGY

To anticipate the amount of runoff water, due to inappropriate land allocation, a multicriteria analysis is needed in every decision of land allocation. Land Allocation Management System (SIMAL) is a watershed analysis system developed using GIS or Geographic Information System (GIS) using land use change parameters, morphometry, and hydrometry of DAS [8].

### 3.1 Research Site

The study material is to explain the effect of surface runoff on land use change, the location of the study is the Lambidaro sub-basin (Figure 1), which is one of 16 sub-basins that form the drainage system of Palembang which discharges into the Musi River, through the city of Palembang. With an area of 65.42 Km<sup>2</sup>.

### 3.2 Research Data

The data used in this research are river hydrometry data, longitudinal cross-section ( $l$ ) and river cross ( $b$ ), river bed invert ( $ls$ ), watershed area ( $A$ ) and density ( $r$ ). While spot height data and land use are needed to analyze the infiltration coefficient ( $c$ ) and time concentration ( $Tc$ ). And the ever-changing dynamic data is the rainfall data ( $R$ ) needed to calculate the rain intensity ( $I$ ) in each sub-watershed.

### 3.3 Research Methods

The method used in this research is using hydrology model and Geographic Information System (GIS). The hydrodynamic model Duflow was used to calculate the amount of runoff, which



would also be used to track flood flow in rivers [11].

The hydrodynamic analysis was performed on selected river sub-systems that have been obtained from the results of cluster analysis. This analysis utilizes the 1D (Duflow) non-steady flow model with the maximum rainfall intensity conditions of the 25th anniversary period of the previous hydrological analysis results as well as the results of tidal observation forecasting at the sub-systems of selected river sub-systems. The first stage in the hydrodynamic analysis was by establishing a scheme of the hydrodynamic network in sub-watershed adapted to the results through terrain morphology and terrain processing analysis on ArcGIS-ARC Hydro and field conditions, then incorporating the dimensions of water structure, cross section, boundary conditions (tidal, rain Results of hydrological analysis) and flow discharge. After calculation of each segment/cross section will be obtained some hydraulic parameters such as flood water level, water flow rate, channel flow and water level in river and channel were obtained.

The inundation distribution occurring in the sub-river system was obtained by combining the results of hydrodynamic analysis and spatial analysis. The water level in the river and the channel was interpolated to obtain the distribution of water level in the selected river subsystem. Then the distribution of water level is arranged with the topographic condition of river sub system in the form of DEM 5m x 5m so as to obtain the distribution of classified high pools that occur in each selected river sub-system with 25th anniversary period.

With several scenarios of land use change, it can be seen how much the changes in inundation height due to land use change in the selected sub-system. This scenario was used as a way to see the condition of the sub-system of a river which in turn will influence the pattern of river environmental control that will be done. The first scenario is to change the type of land use so that the value of  $C$  tends to decrease which became an indicator of the condition of the river subsystem becomes better. The second scenario was changing the type of land use so that the value of  $C$  tends to increase, this condition could explain that river subsystem had a condition that was considered to be disturbed.

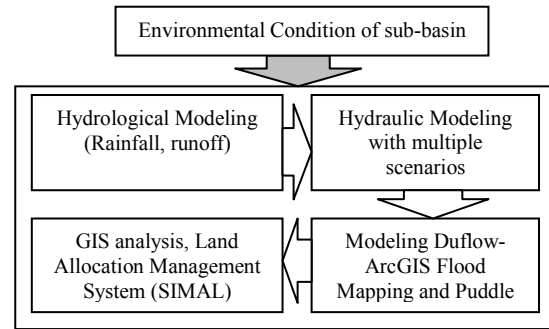


Fig. 2 Flow Chart of research methods

## 4. RESULTS AND DISCUSSION

### 4.1 Correlation Between Surface Run-off with Morphometric Characteristic Variable

This correlation was analyzed to address the problem of spatial relationships between land use and sub-basin morphometry and its effect on the extent of surface runoff. The strong correlation between independent variables (characteristic of sub-basin morphometry) and the dependent variable of runoff ( $Q$ ), is seen through Pearson correlation value. Correlation values range from -1,000 to 1,000. The value of -1.000 shows a very strong but negative correlation, while the value of 1,000 indicates a very strong correlation/very closely directed positively.

The results of the analysis (at 99% confidence level) obtained the correlation value between variables very high runoff ( $Q$ ) ranges from 0.849 to 0.999 with variable length of river order ( $x_1$ ), river length ( $x_2$ ), watershed ( $x_3$ ), roving watershed ( $x_4$ ), average  $Rb(x_5)$ , Flow density ( $x_6$ ), texture ratio ( $x_8$ ), Roughness number  $Rn(x_{10})$ .

This means that there is a strongly significant relationship between runoff and long river order, river length, basin area, perimeter watershed, average  $Rb$ , flow density, texture ratio, roughness number  $Rn$ . While the value of strong correlation is seen between runoff with  $Tc$  concentration time of 0.629. This means at a significance level of 5% or a 95% confidence level, there is a strong relationship between runoff and concentration time ( $Tc$ ). The correlation value is strong enough at flow frequency ( $x_7$ ), relief ( $x_9$ ) and green area (forest, tree, shrub, yard, rice field, field, garden) ( $x_{14}$ ). The low correlation value between runoff and variable flow coefficient  $C(x_{12})$  of 0.319 with significant level and negative correlation of 0.234 for variable circularity ratio  $Rc(x_{13})$ .

### 4.2 Characteristic of Lambidaro sub-Basin

The morphometric characteristics of the Lambidaro watershed are shown in Fig. 3. Land

utilization in the Lambidaro sub-basin is dominated by shrubs, trees, fields and forests ranging from 72%, settlements ranging from 4.74% to potentially changing land use, such as for settlement development. Settlement construction mainly occurs in right Lambidaro (Lambidaro-2) sub-watershed close to the main road / outer shaft of Palembang City (Musidua bridge). As part of left Lambidaro (Lambidaro-1) sub-basin is dominated by bushes and swamps. The sub-watershed of Lambidaro river has varying altitude less than 10 m msl in estuary area up to 36 m in upstream area. The percentage of the slope is

dominated by 0-3% and more than 8% with a maximum height of 36 msl in the upstream area. River conditions are still natural, especially in part of left Lambidaro, while some rivers in part of right Lambidaro sub-basin have been normalized by cliff reinforcement.

With the condition of land use, slope, flow density and soil type, the range of runoff coefficient in Lambidaro sub-basin shows the runoff coefficient value of 0.66. This means that 34% of the total rainfall falls on the Lambidaro river sub-basin can still be infiltrated (see Figure 3).

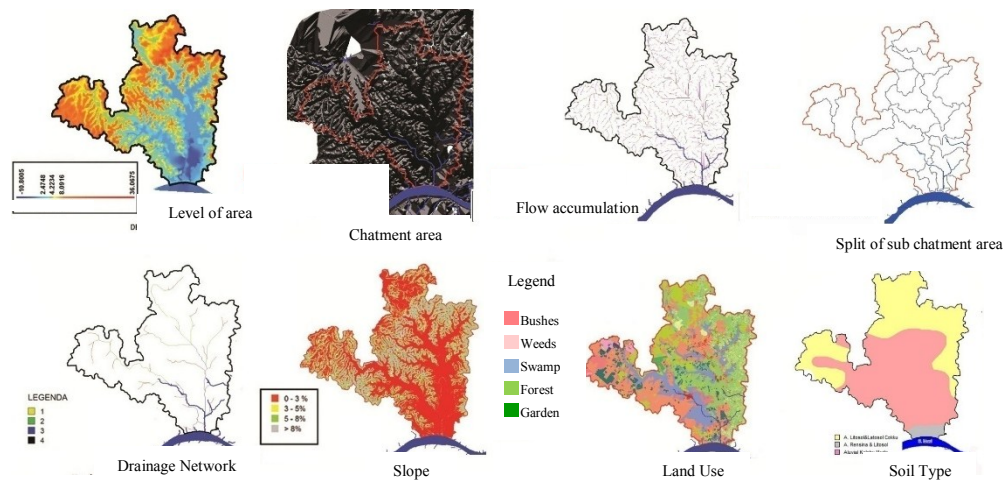


Fig. 3 Characteristic of morfometry Lambidaro sub-basin

#### 4.3 Hydrodynamic model of Lambidaro watershed

The simulation of the Duflow-ArcGIS model was conducted on the Lambidaro watershed. Schematic of the water system based on DEM extraction with flow patterns that resulted in sub-basin and drainage line boundaries to illustrate runoff on the floodwaters was constructed first (Figure 4). The Lambidaro sub-basin network scheme was built by entering the cross-profile data as well as extending the channels per segment based on the measurement results in the field. Channel width ranges from 11 - 18 m. The boundary conditions for the Duflow model consist of upper boundary conditions such as runoff from upstream Lambidaro watershed and downstream boundary conditions, such as water levels at the mouth of the Lambidaro river. The rainfall hydrology parameter was taken from the analysis of the distribution of maximum daily rainfall by Gumbell method for a 25-year period of 163 mm/day. The weighted C values of each Lambidaro sub-basin were calculated from the results of spatial analysis of land use, slope, soil type and flow density per sub-watershed as shown in Fig.4b. The water level in certain segments of

drainage network of Lambidaro watershed is shown in Figure 4c. The results of the hydrodynamic modeling, the existing conditions of the Lambidaro sub-watershed were approached with a 25-year return period scenario.

The water level on each segment was then transformed into the DEM sub of the Lambidaro sub-basin, and interpolated by the ArcGIS procedure to obtain the inundation distribution that will occur for the 25-year anniversary scenario. The results of the analysis of the distribution of inundation of Lambidaro sub-basin were classified into six classifications, namely: (1) unlogged areas; (2) flooded with altitude less than 0.25 m; (3) altitude 0.25 - 0.5 m; (4) Altitude of 0.5-0.75 m; (5) altitude of 0.75-1 m and (6) heights of more than 1 m. The result of hydrodynamic modeling using Duflow model was followed by analysis of inundation distribution that will occur with 25 year period return scenario seen as in Figure 4d. The flooded areas of the Lambidaro sub-basin are the areas of flow accumulation and from field observations are low areas with a slope of 0-3% with the type of land use in swamp dominance. The calibration of this model is shown by the high suitability of inundation that occurs in the field with  $R^2 = 0.869$ .

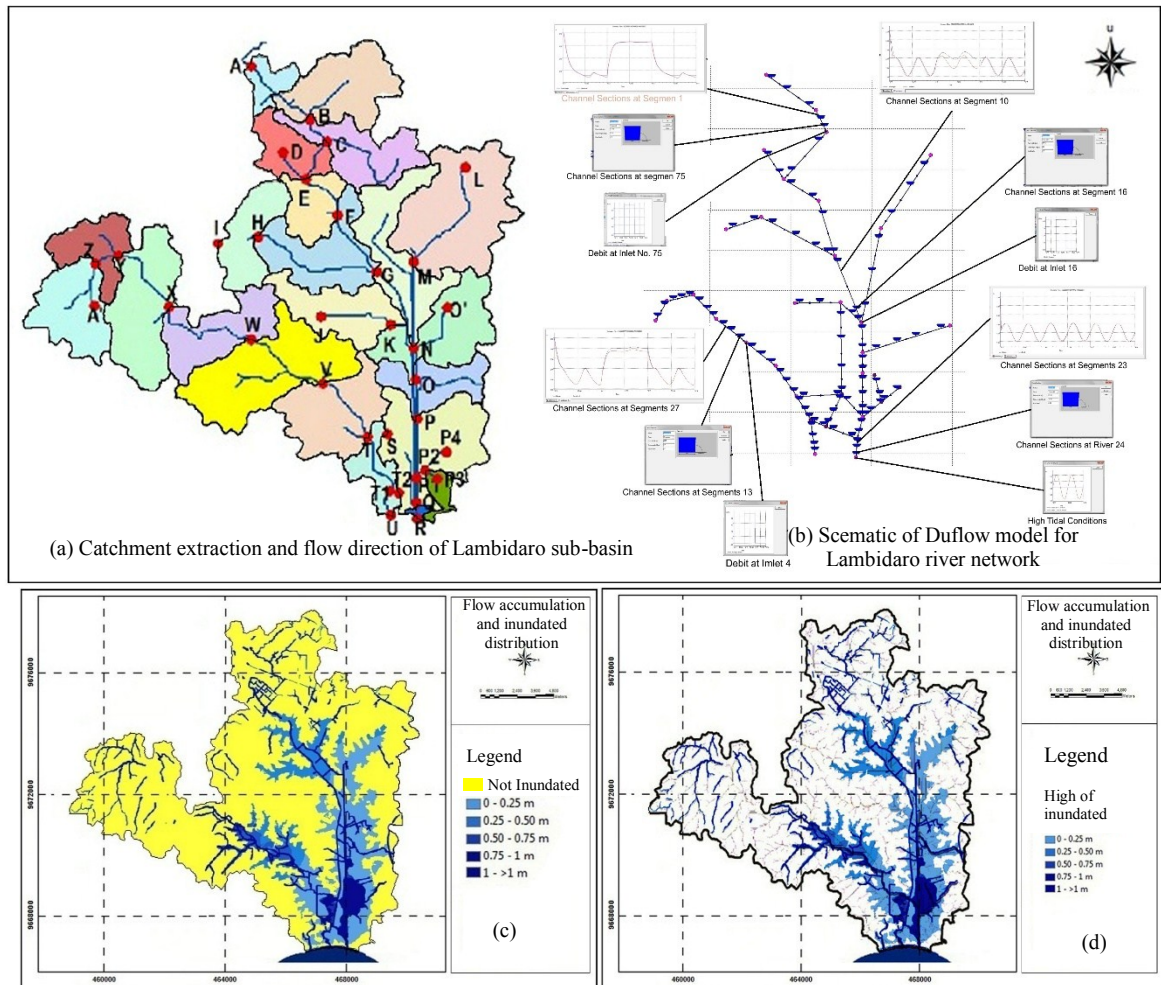


Fig. 4 Drainage network flood simulation of Lambidaro sub-basin: (a) Chatment extraction and flow direction of Lambidaro sub-basin (b) Scematic and drainage network; (c) distribution of inundation due to land use change; (d) the puddle area is assembled with flow accumulation

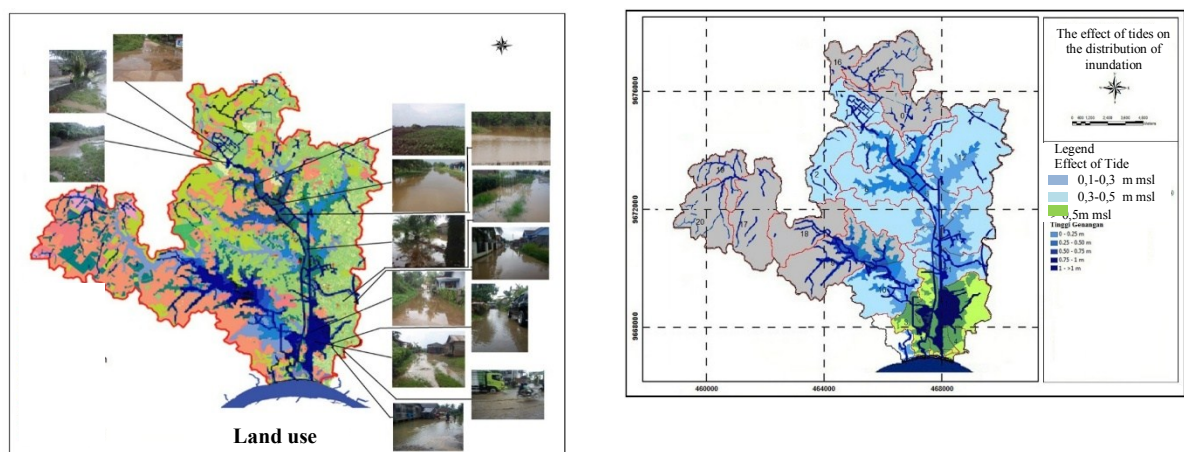


Fig. 5 Distribution of inundation is arranged with Lambidaro sub-waters upstream, middle and downstream

The influence of inundation in the upper Lambidaro watershed is 756.81 ha, 2821,6 ha, and downstream 513,23 ha. As for the part of left Lambidaro sub-watershed, the upstream area of

1854.5 ha, middle 380.5 ha and downstream 131.1 ha. The distribution of inundation stacked with Lambidaro sub-basin can be seen in Figure 5.

#### 4.4 Land use change scenarios

Zoning scenario to see the effect of land use change on the inundation distribution that will

occur in Lambidaro sub-basin. Land use change scenario is made as many as 5 scenarios, namely:

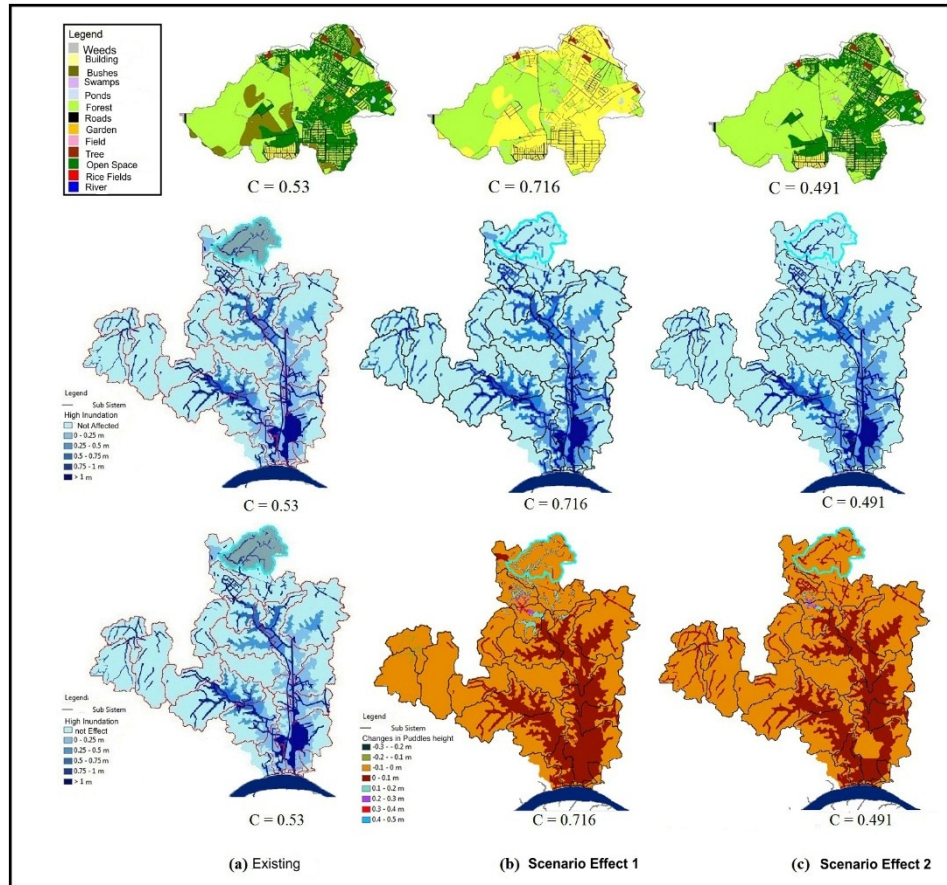


Fig. 6 Effects of land use change of Lambidaro upstream basin

- (1) The first scenario is changing the type of land use area that is still possible to be converted into a green area (urban forest, park) so it can decrease the value of  $C$ .
- (2) The second scenario is changing the type of land utilization of Lambidaro-2 sub-basin of the right section that may still be converted into a settlement (see the current city development) resulting in an increase in the value of  $C$ .
- (3) The third scenario is similar to the first scenario is only done on the part of Lambidaro-1 sub-basin.
- (4) The fourth scenario is the same as the second scenario and is only done on the part of Lambidaro-1 sub-basin.
- (5) The fifth scenario is changing land use with different  $C$  values ranging from 0.2 to 0.9

Some of the effects of land use change scenarios on upstream, mid and downstream sub-watersheds are minimizing and increasing the value of the runoff coefficient  $C$  per sub-watershed

were done to reduce and increase the inundation shown in Fig.6.

#### 5. CONCLUSION

1. There is a strongly significant relationship between runoff and river length, watershed area, perimeter watershed, average  $Rb$ , flow density, texture ratio, roughness number  $Rn$ .
2. There is a strong relationship between runoff and concentration time ( $Tc$ ).
3. The correlation is strong enough on the Frequency of flow and Relief with the forest area
4. The effect of land-use change with several scenarios made in the Lambidaro sub-basin proves that if land use change is not well controlled, the extent of the inundation will extend from downstream, middle to upstream

## ACKNOWLEDGMENTS

Acknowledgments are submitted to the Directorate of Research and Community Service, Ministry of Research Technology and Higher Education, for the support of Research Grants Higher Education for the period of study 2016-2018.

## 7. REFERENCE

- [1] B.J.M. Goes, S.E., Howarth, R.B, Wardlaw, I.R, Hancock and U.N. Parajuli, Integrated water resources management in an insecure river basin: a case study of Helmand River Basin, Afghanistan., International Journal of water resources Development, Vol. 32, Issue 1,2014
- [2] Rosmalinda Permatasari, Dantje Kardana Natakusumah, Arwin Sabar, Determining Peak Discharge Factor Using Synthetic Unit Hydrograph Modelling (Case Study : Upper Komering South Sumatera, Indonesia), International Journal of Geomate, Vol. 13, Issue 36, 2017, pp.1-5
- [3] Seemanta S. Bhagabati, Akiyuki Kawasaki, Consideration of the rainfall-run-off-inundation (RRI) Model for flood mapping in a deltaic area of Myanmar, Hydrological Research Letter, 2017
- [4] Province of South Sumatera, *Revised Regional Spatial Plan of South Sumatera Province Year 2016-2036*, 2016, ppIII 1-6
- [5] Dinar DA Putranto, Sarino, Yuono, AL., "Flood modeling for mitigation and management of drainage system of Palembang city", Research report, LPPM-UNSRI, 2008, 1-6
- [6] Bana E, Costa CA, Da Silva PA, Nunes Correia F., *Multicriteria Evaluation of Flood Control Measures: The Case of Ribeirado Livramento. Water Resource Manag*, 2004,18 (21): 263–283
- [7] Majid Mirzael, Application of a rainfall-runoff model for regional-scale flood inundation mapping for the Langat River Basin, International Journal of GEOMATE, 2017
- [8] Hamim SA, F Sjarkowi, Dinar DA Putranto, Totok G, *Model control of river sub-system environment in management of drainage system of Palembang City*, Dissertation, Doctor of Environmental science, post graduate program University of Sriwijaya, 2013, p 4-16
- [9] Government Regulation no. 26, The National Spatial Plan, The secretariat of the Republic of Indonesia, 2008
- [10] Puspics-UGM "Preparation of Integrated Musi River Basin Management Plan", Musi River Basin Management Area, Research Report,2013, 77-80
- [11] Dinar DA Putranto, Sarino, and Yuono AL, "Digital field model for rainfall-runoff modeling of sedimentation analysis regionally in the Musi basin", Research report, University of Sriwijaya, 2015
- [12] Province of South Sumatera, *Revised Regional Spatial Plan of South Sumatera Province Year 2016-2036*, Report Planning, 2016, pIII 1-6

---

Copyright © Int. J. of GEOMATE. All rights reserved, including the making of copies unless permission is obtained from the copyright proprietors.

---

# Forward from Author 3

International Journal of GEOMATE



## ISI

---

- Revised 3
- Response by Author

## 45: 18652: Galley proof

---

Dari: geomate (noreply@jotform.com)

Kepada: dwianugerah@yahoo.co.id

Tanggal: Selasa, 16 Januari 2018 02.01 WIB

---

### Galley proof

Paper ID number 18652


Issue number 45

Galley proof (pdf) [28-34-18652-Dinar-May-2018.pdf](#)

Galley proof (word) [Revise-28-34-18652-Dinar-May-2018.doc](#)

Copyright form [Response by Authors to Reviewer.pdf](#)

E-mail dwianugerah@yahoo.co.id

Powered by  **JotForm**

Create your own form today!

# INTEGRATION OF SURFACE WATER MANAGEMENT IN URBAN AND REGIONAL SPATIAL PLANNING

\*Putranto DA Dinar<sup>1</sup>, Sarino<sup>2</sup>, Yuono AL<sup>3</sup>, Juliana Ch Imroatul<sup>4</sup>, and Hamim SA<sup>5</sup>

<sup>1</sup>Post Graduate Program; <sup>2,3,4</sup>Faculty of Engineering, University of Sriwijaya, Indonesia

\*Corresponding Author, Received: 15 Oct. 2017, Revised: 16 Dec. 2017, Accepted: 20 Jan. 2017

**ABSTRACT:** It is necessary to analyze the conditions of the watershed hydrometry, the type of land use, the duration and the time of rain, the tidal height, which is modeled spatially, in order to support in decision making for spatial management and water management. Palembang Metropolitan City is one of the major cities on the island of Sumatra, which is regionally included in the Musi Watershed area. Hydrologically Palembang City is located at the mouth of the Musi river, with an altitude of less than 20 m above the mean sea level. When the maximum rainfall occurs in the watershed Area, Palembang City will be affected by tidal water, and runoff on the sub-watershed in Palembang city can not be flowed through the main channel within Palembang City, due to the tide of Musi river water. This study aims to show the relationship between watershed hydrometry, land use change management, rain intensity, and tidal influences on the watershed area, with various scenarios that will affect the runoff discharge and distribution of inundation that occur in the watershed area. Taking a case study of the Lambidaro sub-basin, in the Palembang City area, all sub-basin parameters that have been tested were modeled by a using duflow to calculate the extent of runoff and flood flow tracking in the river. The inundation distribution occurring in the sub watershed was obtained by combining the results of hydrodynamic analysis and spatial analysis. Based on the results obtained it is concluded that there is a strong spatial relationship between land use and sub-basin morphometry and its effect on the extent of surface runoff.

**Keywords:** Land Use Change, flooding and puddles, Run-off, spatial management

## 1. INTRODUCTION

Land use changes in some areas of the city in Indonesia is so fast, due to rapid urbanization and industrial development. These changes are almost entirely done by reclamation of swamps, the utilization of river banks, and conversion of forest land and agricultural land. The impact of changes in land use has changed the patterns of water drainage in sub-basin areas that exist in urban areas. The main effects of changes in drainage patterns are flooding and puddles as a result of excessive runoff [1].

Human activities have caused very significant impact on water quantity, water quality and aquatic ecology. As the result, the dangers of flooding, household and industrial waste, which, after accumulating for a long time, are unlikely to return to normal or require enormous costs for recovery.

Run-off problems with peak flood and inundation characteristics are influenced by several factors, such as urbanization, unsuitable landfill, tidal effects, as well as sedimentation and river-flow pollutants from upstream areas and other small rivers that form the sub-watersheds in the area [2].

Flow management capability, run-off mitigation, infiltration and water quality all have relevance to land use conditions. Furthermore, the connection between the water management system

and spatial planning is one of the important keys that must be done if they want to play a role in reducing the danger of flooding. However, in reality in every spatial arrangement, the two systems, namely spatial planning and water management have never been integrated. On this basis, an analysis of hydro topographic conditions, type of land cover, duration and time of rain, tidal height, are modeled using spatial analysis, in order to support decision making for spatial management and water management [3].

## 2. CITY DEVELOPMENT AND FLOOD PROBLEM IN SOUTH SUMATERA AREA

Similar to the development of several regions in Indonesia, the province of South Sumatra has the development of cities that is very significant. It can be seen from the population growth which averagely reached 1.44% with the population of 7,481,200 in 2010 [4] of which, 1,468,000 are in Palembang (19.62%). If the average population growth in South Sumatra remains at 1.88%, then it is estimated that in 2030, the population in South Sumatra province will reach 10,166,760 people and 18.97% will be in Palembang City.

With such a large population growth, there will be concentration of population in big cities in South Sumatra Province especially in Palembang City, which will cause expansion of land use for



various urban activities. The expansion that will change the various functions of the water reservoir land, is transformed into a developed one, and will neglect the watershed ecosystem.

Based on data from BMKG (2010), the highest rainfall in South Sumatera Province is 18 - <34.87 mm/day and the peak rainfall in November, and the lowest rainfall <18 mm/day, occurs every in May-August. Surface water is difficult to predict in relation to space and time distribution. While the AWLR which is used to record water level in several locations along the river has not worked properly. This has caused much constraints to predict the occurrence of peak flood and areas that will occur. In October (2016), the city of Lubuk Linggau, and several sub-districts in Musi Rawas district have experienced floods, the city of Sekayu and several sub-districts in Musi Banyuasin regency in September (2016), Inderalaya city and several sub-districts in Ogan Ilir Regency (October, 2016), Kayu Agung city and several sub-districts in Ogan Komering Ilir regency, Pangkalan Balai City and several sub-districts in Banyuasin regency, and Palembang City itself always experiences flood in every rainy season with high intensity.

Efforts to control floods have been undertaken by several cities that often experience floods every year. In Jakarta City floodway canal and biopore has been made and in Semarang City, a polder system has been also built. But all of them have not yet shown that the problem of annual floods can be overcome. All flood control systems, must depart from existing watershed ecosystem conditions. From these conditions, It requires new analysis by simulation to determine the flood discharge with each return period, which finally can be used to determine the appropriate drainage system in the area [5]. Thus a specific approach through more useful and accurate techniques is necessary. Transforming data into a Geographic Information System using Multicriteria Spatial Analysis in decision making [6] can be used as a policy and technical combination solution and technical, and also as a model in presenting the watershed environmental conditions for better data quality and analysis [7].

## 2.1 Case Study

As an example of frequent inundation in the Lambidaro sub-basin especially in the downstream area and around the floodplain, during the rainy season and high tides is Lambidaro sub basin with an area of 65.25 km<sup>2</sup> is a sub watershed which has different morphometric characteristics from other sub watersheds. Based on the drainage pattern it is divided into two sub-watersheds namely part of left Lambidaro (Lambidaro-1) Sub-watershed and

part of right Lambidaro (Lambidaro-2) sub-watershed which leads to the Musi river.

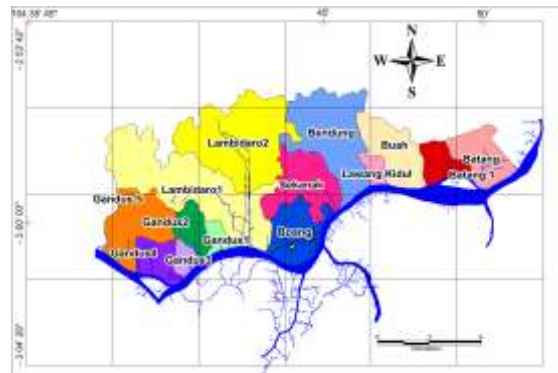


Fig.1 Lambidaro sub-basin at Musi downstream sub-basin area

## 3. METHODOLOGY

To anticipate the amount of runoff water, due to inappropriate land allocation, a multicriteria analysis is needed in every decision of land allocation. Land Allocation Management System (SIMAL) is a watershed analysis system developed using GIS or Geographic Information System (GIS) using land use change parameters, morphometry, and hydrometry of DAS [8].

### 3.1 Research Site

The study material is to explain the effect of surface runoff on land use change, the location of the study is the Lambidaro sub-basin (Figure 1), which is one of 16 sub-basins that form the drainage system of Palembang which discharges into the Musi River, through the city of Palembang. With an area of 65.42 Km<sup>2</sup>.

### 3.2 Research Data

The data used in this research are river hydrometry data, longitudinal cross-section ( $l$ ) and river cross ( $b$ ), river bed invert ( $ls$ ), watershed area ( $A$ ) and density ( $r$ ). While spot height data and land use are needed to analyze the infiltration coefficient ( $c$ ) and time concentration ( $Tc$ ). And the ever-changing dynamic data is the rainfall data ( $R$ ) needed to calculate the rain intensity ( $I$ ) in each sub-watershed.

### 3.3 Research Methods

The method used in this research is using hydrology model and Geographic Information System (GIS). The hydrodynamic model Duflow was used to calculate the amount of runoff, which

would also be used to track flood flow in rivers [11].

The hydrodynamic analysis was performed on selected river sub-systems that have been obtained from the results of cluster analysis. This analysis utilizes the 1D (DufLOW) non-steady flow model with the maximum rainfall intensity conditions of the 25th anniversary period of the previous hydrological analysis results as well as the results of tidal observation forecasting at the sub-systems of selected river sub-systems. The first stage in the hydrodynamic analysis was by establishing a scheme of the hydrodynamic network in sub-watershed adapted to the results through terrain morphology and terrain processing analysis on ArcGIS-ARC Hydro and field conditions, then incorporating the dimensions of water structure, cross section, boundary conditions (tidal, rain Results of hydrological analysis) and flow discharge. After calculation of each segment/cross section will be obtained some hydraulic parameters such as flood water level, water flow rate, channel flow and water level in river and channel were obtained.

The inundation distribution occurring in the sub-river system was obtained by combining the results of hydrodynamic analysis and spatial analysis. The water level in the river and the channel was interpolated to obtain the distribution of water level in the selected river subsystem. Then the distribution of water level is arranged with the topographic condition of river sub system in the form of DEM 5m x 5m so as to obtain the distribution of classified high pools that occur in each selected river sub-system with 25th anniversary period.

With several scenarios of land use change, it can be seen how much the changes in inundation height due to land use change in the selected sub-system. This scenario was used as a way to see the condition of the sub-system of a river which in turn will influence the pattern of river environmental control that will be done. The first scenario is to change the type of land use so that the value of  $C$  tends to decrease which became an indicator of the condition of the river subsystem becomes better. The second scenario was changing the type of land use so that the value of  $C$  tends to increase, this condition could explain that river subsystem had a condition that was considered to be disturbed.

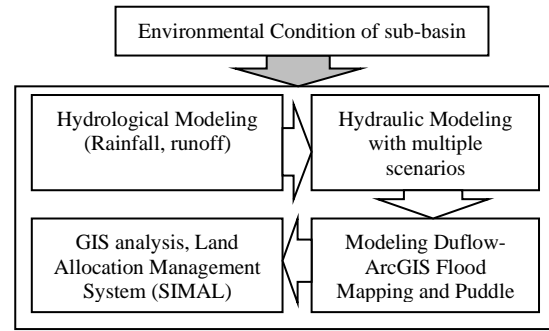


Fig. 2 Flow Chart of research methods

## 4. RESULTS AND DISCUSSION

### 4.1 Correlation Between Surface Run-off with Morphometric Characteristic Variable

This correlation was analyzed to address the problem of spatial relationships between land use and sub-basin morphometry and its effect on the extent of surface runoff. The strong correlation between independent variables (characteristic of sub-basin morphometry) and the dependent variable of runoff ( $Q$ ), is seen through Pearson correlation value. Correlation values range from -1,000 to 1,000. The value of -1.000 shows a very strong but negative correlation, while the value of 1,000 indicates a very strong correlation/very closely directed positively.

The results of the analysis (at 99% confidence level) obtained the correlation value between variables very high runoff ( $Q$ ) ranges from 0.849 to 0.999 with variable length of river order ( $x_1$ ), river length ( $x_2$ ), watershed ( $x_3$ ), roving watershed ( $x_4$ ), average  $Rb(x_5)$ , Flow density ( $x_6$ ), texture ratio ( $x_8$ ), Roughness number  $Rn(x_{10})$ .

This means that there is a strongly significant relationship between runoff and long river order, river length, basin area, perimeter watershed, average  $Rb$ , flow density, texture ratio, roughness number  $Rn$ . While the value of strong correlation is seen between runoff with  $Tc$  concentration time of 0.629. This means at a significance level of 5% or a 95% confidence level, there is a strong relationship between runoff and concentration time ( $Tc$ ). The correlation value is strong enough at flow frequency ( $x_7$ ), relief ( $x_9$ ) and green area (forest, tree, shrub, yard, rice field, field, garden) ( $x_{14}$ ). The low correlation value between runoff and variable flow coefficient  $C(x_{12})$  of 0.319 with significant level and negative correlation of 0.234 for variable circularity ratio  $Rc(x_{13})$ .

### 4.2 Characteristic of Lambidaro sub-Basin

The morphometric characteristics of the Lambidaro watershed are shown in Fig. 3. Land

utilization in the Lambidaro sub-basin is dominated by shrubs, trees, fields and forests ranging from 72%, settlements ranging from 4.74% to potentially changing land use, such as for settlement development. Settlement construction mainly occurs in right Lambidaro (Lambidaro-2) sub-watershed close to the main road / outer shaft of Palembang City (Musidua bridge). As part of left Lambidaro (Lambidaro-1) sub-basin is dominated by bushes and swamps. The sub-watershed of Lambidaro river has varying altitude less than 10 m msl in estuary area up to 36 m in upstream area. The percentage of the slope is

dominated by 0-3% and more than 8% with a maximum height of 36 msl in the upstream area. River conditions are still natural, especially in part of left Lambidaro, while some rivers in part of right Lambidaro sub-basin have been normalized by cliff reinforcement.

With the condition of land use, slope, flow density and soil type, the range of runoff coefficient in Lambidaro sub-basin shows the runoff coefficient value of 0.66. This means that 34% of the total rainfall falls on the Lambidaro river sub-basin can still be infiltrated (see Figure 3).

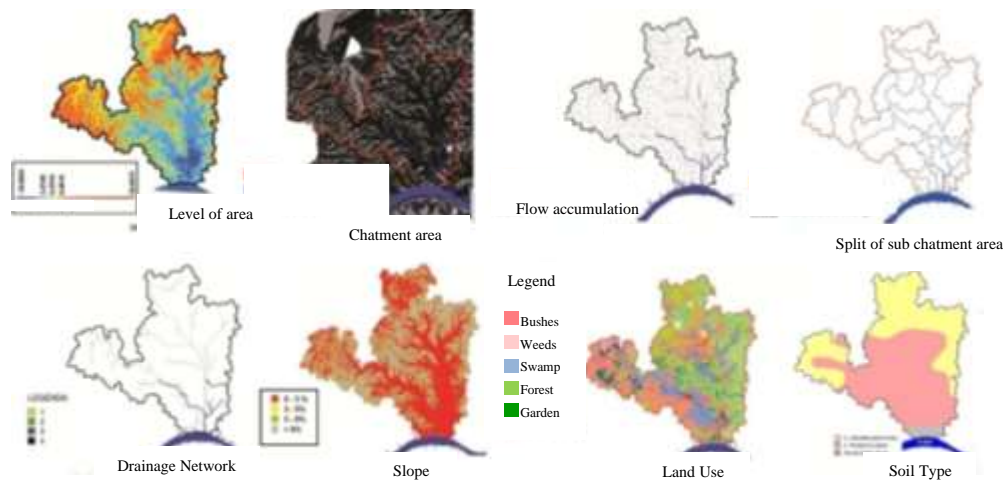


Fig. 3 Characteristic of morfometry Lambidaro sub-basin

#### 4.3 Hydrodynamic model of Lambidaro watershed

The simulation of the Duflow-ArcGIS model was conducted on the Lambidaro watershed. Schematic of the water system based on DEM extraction with flow patterns that resulted in sub-basin and drainage line boundaries to illustrate runoff on the floodwaters was constructed first (Figure 4). The Lambidaro sub-basin network scheme was built by entering the cross-profile data as well as extending the channels per segment based on the measurement results in the field. Channel width ranges from 11 - 18 m. The boundary conditions for the Duflow model consist of upper boundary conditions such as runoff from upstream Lambidaro watershed and downstream boundary conditions, such as water levels at the mouth of the Lambidaro river. The rainfall hydrology parameter was taken from the analysis of the distribution of maximum daily rainfall by Gumbell method for a 25-year period of 163 mm/day. The weighted C values of each Lambidaro sub-basin were calculated from the results of spatial analysis of land use, slope, soil type and flow density per sub-watershed as shown in Fig.4b. The water level in certain segments of

drainage network of Lambidaro watershed is shown in Figure 4c. The results of the hydrodynamic modeling, the existing conditions of the Lambidaro sub-watershed were approached with a 25-year return period scenario.

The water level on each segment was then transformed into the DEM sub of the Lambidaro sub-basin, and interpolated by the ArcGIS procedure to obtain the inundation distribution that will occur for the 25-year anniversary scenario. The results of the analysis of the distribution of inundation of Lambidaro sub-basin were classified into six classifications, namely: (1) unlogged areas; (2) flooded with altitude less than 0.25 m; (3) altitude 0.25 - 0.5 m; (4) Altitude of 0.5-0.75 m; (5) altitude of 0.75-1 m and (6) heights of more than 1 m. The result of hydrodynamic modeling using Duflow model was followed by analysis of inundation distribution that will occur with 25 year period return scenario seen as in Figure 4d. The flooded areas of the Lambidaro sub-basin are the areas of flow accumulation and from field observations are low areas with a slope of 0-3% with the type of land use in swamp dominance. The calibration of this model is shown by the high suitability of inundation that occurs in the field with  $R^2=0.869$ .

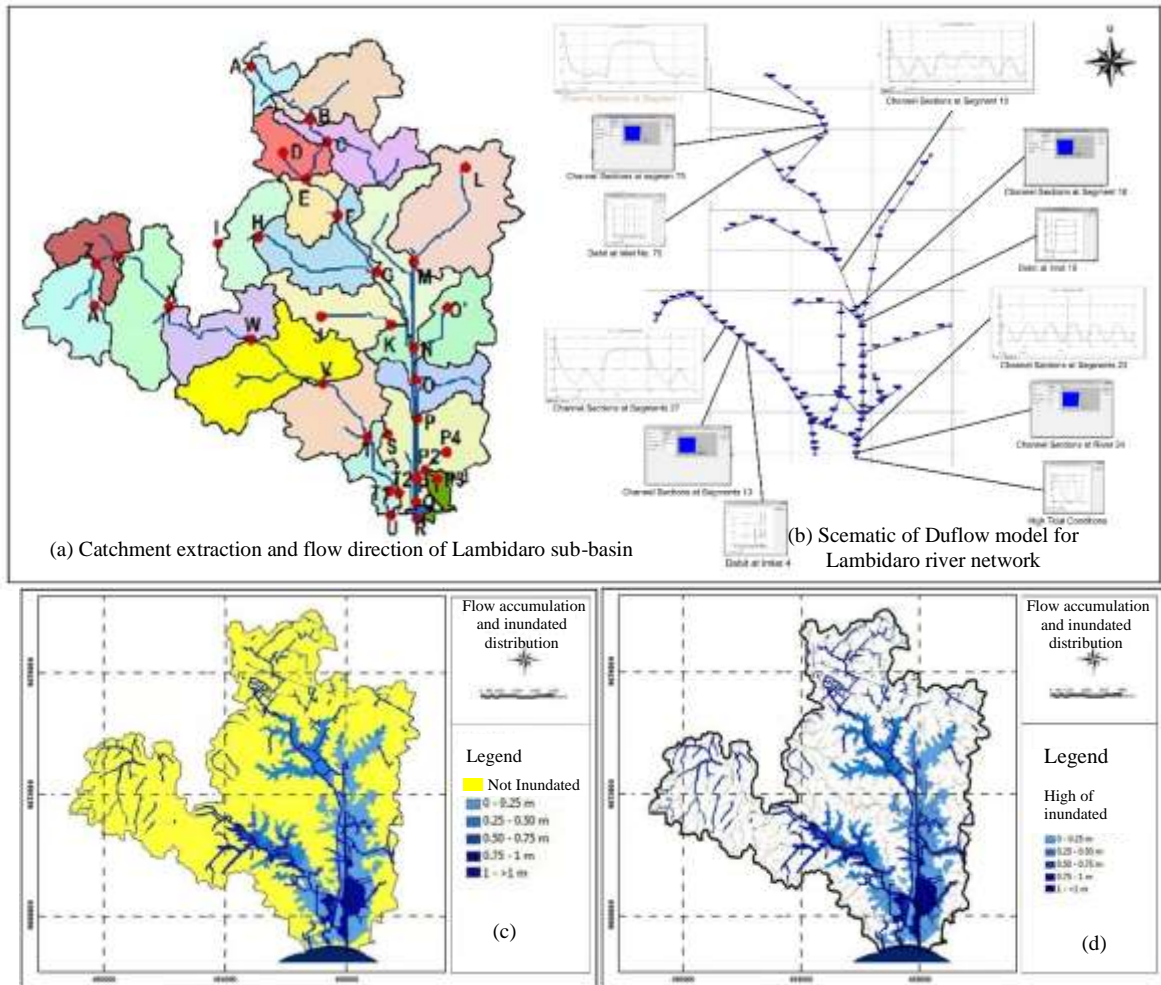


Fig. 4 Drainage network flood simulation of Lambidaro sub-basin: (a) Chatment extraction and flow direction of Lambidaro sub-basin (b) Scematic and drainage network; (c) distribution of inundation due to land use change; (d) the puddle area is assembled with flow accumulation

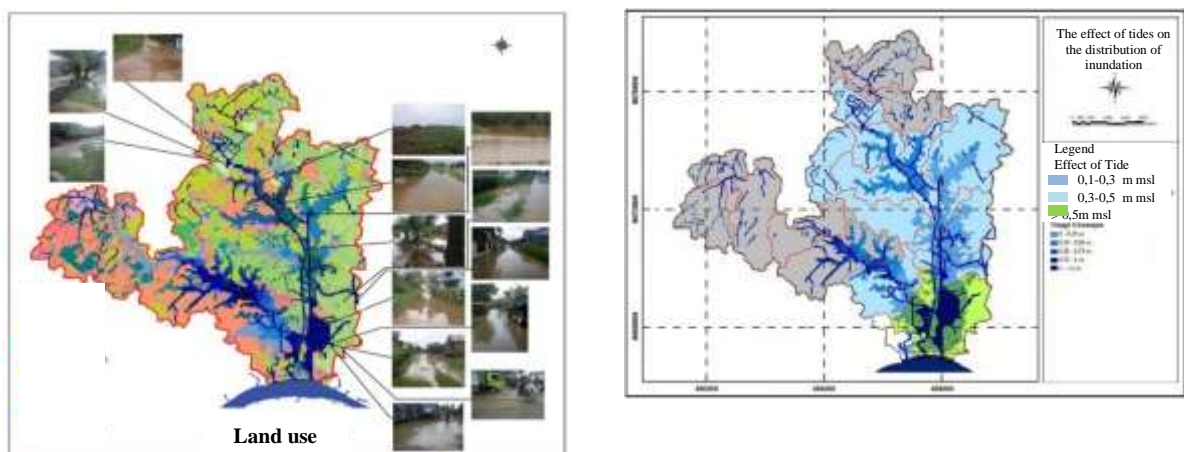


Fig. 5 Distribution of inundation is arranged with Lambidaro sub-waters upstream, middle and downstream

The influence of inundation in the upper Lambidaro watershed is 756.81 ha, 2821,6 ha, and downstream 513,23 ha. As for the part of left Lambidaro sub-watershed, the upstream area of

1854.5 ha, middle 380.5 ha and downstream 131.1 ha. The distribution of inundation stacked with Lambidaro sub-basin can be seen in Figure 5.

#### 4.4 Land use change scenarios

Zoning scenario to see the effect of land use change on the inundation distribution that will

occur in Lambidaro sub-basin. Land use change scenario is made as many as 5 scenarios, namely:

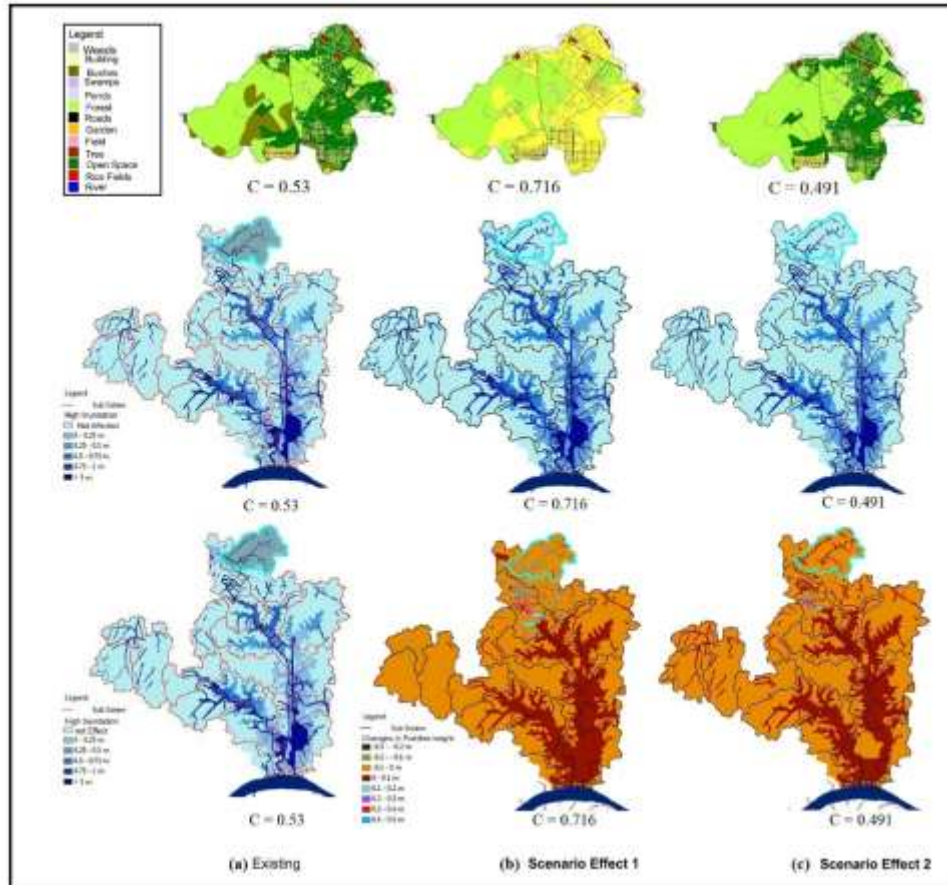


Fig. 6 Effects of land use change of Lambidaro upstream basin

- (1) The first scenario is changing the type of land use area that is still possible to be converted into a green area (urban forest, park) so it can decrease the value of  $C$ .
- (2) The second scenario is changing the type of land utilization of Lambidaro-2 sub-basin of the right section that may still be converted into a settlement (see the current city development) resulting in an increase in the value of  $C$ .
- (3) The third scenario is similar to the first scenario is only done on the part of Lambidaro-1 sub-basin.
- (4) The fourth scenario is the same as the second scenario and is only done on the part of Lambidaro-1 sub-basin.
- (5) The fifth scenario is changing land use with different  $C$  values ranging from 0.2 to 0.9

Some of the effects of land use change scenarios on upstream, mid and downstream sub-watersheds are minimizing and increasing the value of the runoff coefficient  $C$  per sub-watershed

were done to reduce and increase the inundation shown in Fig.6.

#### 5. CONCLUSION

1. There is a strongly significant relationship between runoff and river length, watershed area, perimeter watershed, average  $Rb$ , flow density, texture ratio, roughness number  $Rn$ .
2. There is a strong relationship between runoff and concentration time ( $Tc$ ).
3. The correlation is strong enough on the Frequency of flow and Relief with the forest area
4. The effect of land-use change with several scenarios made in the Lambidaro sub-basin proves that if land use change is not well controlled, the extent of the inundation will extend from downstream, middle to upstream

## ACKNOWLEDGMENTS

Acknowledgments are submitted to the Directorate of Research and Community Service, Ministry of Research Technology and Higher Education, for the support of Research Grants Higher Education for the period of study 2016-2018.

## 7. REFERENCE

- [1] B.J.M. Goes, S.E., Howarth, R.B, Wardlaw, I.R, Hancock and U.N. Parajuli, Integrated water resources management in an insecure river basin: a case study of Helmand River Basin, Afghanistan., International Journal of water resources Development, Vol. 32, Issue 1,2014
- [2] Rosmalinda Permatasari, Dantje Kardana Natakusumah, Arwin Sabar, Determining Peak Discharge Factor Using Synthetic Unit Hydrograph Modelling (Case Study : Upper Komering South Sumatera, Indonesia), International Journal of Geomate, Vol. 13, Issue 36, 2017, pp.1-5
- [3] Seemanta S. Bhagabati, Akiyuki Kawasaki, Consideration of the rainfall-run-off-inundation (RRI) Model for flood mapping in a deltaic area of Myanmar, Hydrological Research Letter, 2017
- [4] Province of South Sumatera, *Revised Regional Spatial Plan of South Sumatera Province Year 2016-2036*, 2016, ppIII 1-6
- [5] Dinar DA Putranto, Sarino, Yuono, AL., "Flood modeling for mitigation and management of drainage system of Palembang city", Research report, LPPM-UNSRI, 2008, 1-6
- [6] Bana E, Costa CA, Da Silva PA, Nunes Correia F., *Multicriteria Evaluation of Flood Control Measures: The Case of Ribeirado Livramento. Water Resource Manag*, 2004,18 (21): 263–283
- [7] Majid Mirzael, Application of a rainfall-runoff model for regional-scale flood inundation mapping for the Langat River Basin, International Journal of GEOMATE, 2017
- [8] Hamim SA, F Sjarkowi, Dinar DA Putranto, Totok G, *Model control of river sub-system environment in management of drainage system of Palembang City*, Dissertation, Doctor of Environmental science, post graduate program University of Sriwijaya, 2013, p 4-16
- [9] Government Regulation no. 26, The National Spatial Plan, The secretariat of the Republic of Indonesia, 2008
- [10] Puspics-UGM "Preparation of Integrated Musi River Basin Management Plan", Musi River Basin Management Area, Research Report,2013, 77-80
- [11] Dinar DA Putranto, Sarino, and Yuono AL, "Digital field model for rainfall-runoff modeling of sedimentation analysis regionally in the Musi basin", Research report, University of Sriwijaya, 2015
- [12] Province of South Sumatera, *Revised Regional Spatial Plan of South Sumatera Province Year 2016-2036*, Report Planning, 2016, pIII 1-6

---

Copyright © Int. J. of GEOMATE. All rights reserved, including the making of copies unless permission is obtained from the copyright proprietors.

---



# International Journal of GEOMATE

A Scientific International Journal on Geotechnique, Construction Materials and Environment

## PUBLISHING AGREEMENT

Dear Sir,

I am required to obtain copyright of papers from authors for the term of copyright and I would be grateful if you would confirm your acceptance by signing and returning the agreement below. I will not withhold permission for any reasonable request from you to publish any part of this paper in connection with any other work by you, provided the usual acknowledgements are given regarding copyright notice and reference to the original publication.

If it is appropriate, the author's employer may sign this agreement and, in any event, the employer may reserve the right to use the paper internally or for promotional purposes only by indicating to this agreement.

The author warrants that the manuscript is the author's original work and has not been published before (if excerpts from copyrighted works are included, the author will obtain written permission from the copyright owners and show credit to the sources in the manuscript). The author also warrants that the article contains no libellous or unlawful statements and does not infringe on the rights of others.

If the work was prepared jointly the author agrees to inform co-authors of the terms of the agreement and to sign on their behalf.

Editors-in-Chief

Name of the Journal:



## International Journal of GEOMATE

A Scientific International Journal on Geotechnique, Construction Materials and Environment

I hereby assign the copyright to my paper entitled,

### INTEGRATION OF SURFACE WATER MANAGEMENT IN URBAN AND REGIONAL SPATIAL PLANNING

+note -

If the paper is rejected, this assignment is null and void

Name of author: 1. Putranto, Dinar DA; 2. Sarino, 3. Yuono, AL; 4. Juliana, Ch Imroatul; 5. Hamim, SA

Signature: 1.

2.

3.

4.

5.

Date: 2018, January, 15

Please send this form duly filled and signed together with your manuscript to:

Dr. Zakaria Hossain, Editor-in-Chief  
Professor, Division of Environmental Science and Technology  
Graduate School of Bioresources, Mie University  
1577 Kurima Machiya-cho  
Tsu-city, Mie 514-8507, Japan  
E-mail: zakaria@bio.mie-u.ac.jp  
Tel: +81-59-231-9578  
Fax: +81-59-231-9578

# Review Results 4

International Journal of GEOMATE



## ISI

---

- Pengantar dari Editor
- 18652: Galley proof



## Re: 45: 18652: Galley proof

Dari: Zakaria (zakaria@bio.mie-u.ac.jp)

Kepada: dwianugerah@yahoo.co.id; yuono\_al@yahoo.co.id

Tanggal: Rabu, 17 Januari 2018 11.06 WIB

Thanks.

- Fill in the gap in all pages (attached).
- Resubmit corrected paper online, <http://www.geomatejournal.com/revised>

-----  
 Dr. Zakaria Hossain (Ph.D. Kyoto Univ.)  
 Professor, Mie University, Japan  
 Editor-in-Chief, Int. J. of GEOMATE  
[editor@geomatejournal.com](mailto:editor@geomatejournal.com)  
<http://www.koku.bio.mie-u.ac.jp/>  
<http://www.geomatejournal.com/>  
 -----

〒514-8507 津市栗真町屋町1577  
 三重大学大学院生物資源学研究科  
 共生環境学専攻地域保全工学講座  
 国際環境保全学研究分野・教授  
 保世院 座狩屋（ホセイン ザカリア）  
 電子メール：[zakaria@bio.mie-u.ac.jp](mailto:zakaria@bio.mie-u.ac.jp)  
 電話番号：059-231-9578 (内線：9578)  
 ファックス：059-231-9578  
 -----

On Tue, Jan 16, 2018 at 4:01 AM, JotForm <[noreply@jotform.com](mailto:noreply@jotform.com)> wrote:

45: 18652: Galley proof

 **Galley proof**

Paper ID number	18652
Issue number	45
Galley proof (pdf)	<a href="#">28-34-18652-Dinar-May-2018.pdf</a>
Galley proof (word)	<a href="#">Revise-28-34-18652-Dinar-May-2018.doc</a>
Copyright form	<a href="#">Response by Authors to Reviewer.pdf</a>
E-mail	<a href="mailto:dwianugerah@yahoo.co.id">dwianugerah@yahoo.co.id</a>

You can [edit this submission](#) and [view all your submissions](#) easily.



28-34-18652-Dinar-May-2018.docx  
4MB



28-34-18652-Dinar-May-2018-fill in the gap.pdf  
1.4MB

# INTEGRATION OF SURFACE WATER MANAGEMENT IN URBAN AND REGIONAL SPATIAL PLANNING

\*Putranto DA Dinar<sup>1</sup>, Sarino<sup>2</sup>, Yuono AL<sup>3</sup>, Juliana Ch Imroatul<sup>4</sup>, and Hamim SA<sup>5</sup>

<sup>1</sup>Post Graduate Program; <sup>2,3,4</sup>Faculty of Engineering, University of Sriwijaya, Indonesia

\*Corresponding Author, Received: 15 Oct. 2017, Revised: 16 Dec. 2017, Accepted: 20 Jan. 2017

**ABSTRACT:** It is necessary to analyze the conditions of the watershed hydrometry, the type of land use, the duration and the time of rain, the tidal height, which is modeled spatially, in order to support in decision making for spatial management and water management. Palembang Metropolitan City is one of the major cities on the island of Sumatra, which is regionally included in the Musi Watershed area. Hydrologically Palembang City is located at the mouth of the Musi river, with an altitude of less than 20 m above the mean sea level. When the maximum rainfall occurs in the watershed Area, Palembang City will be affected by tidal water, and runoff on the sub-watershed in Palembang city can not be flowed through the main channel within Palembang City, due to the tide of Musi river water. This study aims to show the relationship between watershed hydrometry, land use change management, rain intensity, and tidal influences on the watershed area, with various scenarios that will affect the runoff discharge and distribution of inundation that occur in the watershed area. Taking a case study of the Lambidaro sub-basin, in the Palembang City area, all sub-basin parameters that have been tested were modeled by a using duflow to calculate the extent of runoff and flood flow tracking in the river. The inundation distribution occurring in the sub watershed was obtained by combining the results of hydrodynamic analysis and spatial analysis. Based on the results obtained it is concluded that there is a strong spatial relationship between land use and sub-basin morphometry and its effect on the extent of surface runoff.

**Keywords:** *Land Use Change, flooding and puddles, Run-off, spatial management*

## 1. INTRODUCTION

Land use changes in some areas of the city in Indonesia is so fast, due to rapid urbanization and industrial development. These changes are almost entirely done by reclamation of swamps, the utilization of river banks, and conversion of forest land and agricultural land. The impact of changes in land use has changed the patterns of water drainage in sub-basin areas that exist in urban areas. The main effects of changes in drainage patterns are flooding and puddles as a result of excessive runoff [1].

Human activities have caused very significant impact on water quantity, water quality and aquatic ecology. As the result, the dangers of flooding, household and industrial waste, which, after accumulating for a long time, are unlikely to return to normal or require enormous costs for recovery.

Run-off problems with peak flood and inundation characteristics are influenced by several factors, such as urbanization, unsuitable landfill, tidal effects, as well as sedimentation and river-flow pollutants from upstream areas and other small rivers that form the sub-watersheds in the area [2].

Flow management capability, run-off mitigation, infiltration and water quality all have relevance to land use conditions. Furthermore, the connection between the water management system

and spatial planning is one of the important keys that must be done if they want to play a role in reducing the danger of flooding. However, in reality in every spatial arrangement, the two systems, namely spatial planning and water management have never been integrated. On this basis, an analysis of hydro topographic conditions, type of land cover, duration and time of rain, tidal height, are modeled using spatial analysis, in order to support decision making for spatial management and water management [3].

## 2. CITY DEVELOPMENT AND FLOOD PROBLEM IN SOUTH SUMATERA AREA

Similar to the development of several regions in Indonesia, the province of South Sumatra has the development of cities that is very significant. It can be seen from the population growth which averagely reached 1.44% with the population of 7,481,200 in 2010 [4] of which, 1,468,000 are in Palembang (19.62%). If the average population growth in South Sumatra remains at 1.88%, then it is estimated that in 2030, the population in South Sumatra province will reach 10,166,760 people and 18.97% will be in Palembang City.

With such a large population growth, there will be concentration of population in big cities in South Sumatra Province especially in Palembang City, which will cause expansion of land use for

various urban activities. The expansion that will change the various functions of the water reservoir land, is transformed into a developed one, and will neglect the watershed ecosystem.

Based on data from BMKG (2010), the highest rainfall in South Sumatera Province is 18 - <34.87 mm/day and the peak rainfall in November, and the lowest rainfall <18 mm/day, occurs every in May-August. Surface water is difficult to predict in relation to space and time distribution. While the AWLR which is used to record water level in several locations along the river has not worked properly. This has caused much constraints to predict the occurrence of peak flood and areas that will occur. In October (2016), the city of Lubuk Linggau, and several sub-districts in Musi Rawas district have experienced floods, the city of Sekayu and several sub-districts in Musi Banyuasin regency in September (2016), Inderalaya city and several sub-districts in Ogan Ilir Regency (October, 2016), Kayu Agung city and several sub-districts in Ogan Komering Ilir regency, Pangkalan Balai City and several sub-districts in Banyuasin regency, and Palembang City itself always experiences flood in every rainy season with high intensity.

Efforts to control floods have been undertaken by several cities that often experience floods every year. In Jakarta City floodway canal and biopore has been made and in Semarang City, a polder system has been also built. But all of them have not yet shown that the problem of annual floods can be overcome. All flood control systems, must depart from existing watershed ecosystem conditions. From these conditions, It requires new analysis by simulation to determine the flood discharge with each return period, which finally can be used to determine the appropriate drainage system in the area [5]. Thus a specific approach through more useful and accurate techniques is necessary. Transforming data into a Geographic Information System using Multicriteria Spatial Analysis in decision making [6] can be used as a policy and technical combination solution and technical, and also as a model in presenting the watershed environmental conditions for better data quality and analysis [7].

### 2.1 Case Study

As an example of frequent inundation in the Lambidaro sub-basin especially in the downstream area and around the floodplain, during the rainy season and high tides is Lambidaro sub basin with an area of 65.25 km<sup>2</sup> is a sub watershed which has different morphometric characteristics from other sub watersheds. Based on the drainage pattern it is divided into two sub-watersheds namely part of left Lambidaro (Lambidaro-1) Sub-watershed and

part of right Lambidaro (Lambidaro-2) sub-watershed which leads to the Musi river.

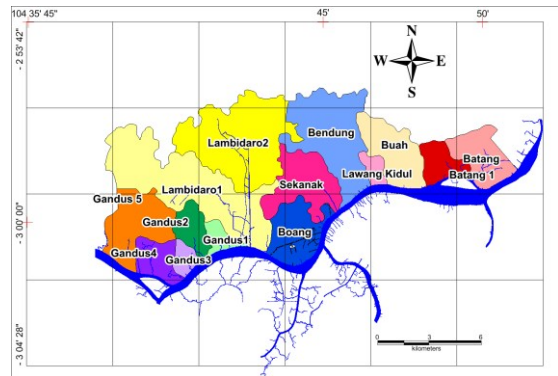


Fig.1 Lambidaro sub-basin at Musi downstream sub-basin area

## 3. METHODOLOGY

To anticipate the amount of runoff water, due to inappropriate land allocation, a multicriteria analysis is needed in every decision of land allocation. Land Allocation Management System (SIMAL) is a watershed analysis system developed using GIS or Geographic Information System (GIS) using land use change parameters, morphometry, and hydrometry of DAS [8].

### 3.1 Research Site

The study material is to explain the effect of surface runoff on land use change, the location of the study is the Lambidaro sub-basin (Figure 1), which is one of 16 sub-basins that form the drainage system of Palembang which discharges into the Musi River, through the city of Palembang. With an area of 65.42 Km<sup>2</sup>.

### 3.2 Research Data

The data used in this research are river hydrometry data, longitudinal cross-section ( $l$ ) and river cross ( $b$ ), river bed invert ( $ls$ ), watershed area ( $A$ ) and density ( $r$ ). While spot height data and land use are needed to analyze the infiltration coefficient ( $c$ ) and time concentration ( $Tc$ ). And the ever-changing dynamic data is the rainfall data ( $R$ ) needed to calculate the rain intensity ( $I$ ) in each sub-watershed.

### 3.3 Research Methods

The method used in this research is using hydrology model and Geographic Information System (GIS). The hydrodynamic model Duflow was used to calculate the amount of runoff, which

would also be used to track flood flow in rivers [11].

The hydrodynamic analysis was performed on selected river sub-systems that have been obtained from the results of cluster analysis. This analysis utilizes the 1D (Duflow) non-steady flow model with the maximum rainfall intensity conditions of the 25th anniversary period of the previous hydrological analysis results as well as the results of tidal observation forecasting at the sub-systems of selected river sub-systems. The first stage in the hydrodynamic analysis was by establishing a scheme of the hydrodynamic network in sub-watershed adapted to the results through terrain morphology and terrain processing analysis on ArcGIS-ARC Hydro and field conditions, then incorporating the dimensions of water structure, cross section, boundary conditions (tidal, rain Results of hydrological analysis) and flow discharge. After calculation of each segment/cross section will be obtained some hydraulic parameters such as flood water level, water flow rate, channel flow and water level in river and channel were obtained.

The inundation distribution occurring in the sub-river system was obtained by combining the results of hydrodynamic analysis and spatial analysis. The water level in the river and the channel was interpolated to obtain the distribution of water level in the selected river subsystem. Then the distribution of water level is arranged with the topographic condition of river sub system in the form of DEM 5m x 5m so as to obtain the distribution of classified high pools that occur in each selected river sub-system with 25th anniversary period.

With several scenarios of land use change, it can be seen how much the changes in inundation height due to land use change in the selected sub-system. This scenario was used as a way to see the condition of the sub-system of a river which in turn will influence the pattern of river environmental control that will be done. The first scenario is to change the type of land use so that the value of  $C$  tends to decrease which became an indicator of the condition of the river subsystem becomes better. The second scenario was changing the type of land use so that the value of  $C$  tends to increase, this condition could explain that river subsystem had a condition that was considered to be disturbed.

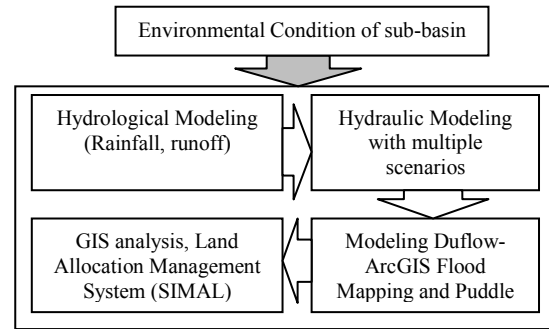


Fig. 2 Flow Chart of research methods

## 4. RESULTS AND DISCUSSION

### 4.1 Correlation Between Surface Run-off with Morphometric Characteristic Variable

This correlation was analyzed to address the problem of spatial relationships between land use and sub-basin morphometry and its effect on the extent of surface runoff. The strong correlation between independent variables (characteristic of sub-basin morphometry) and the dependent variable of runoff ( $Q$ ), is seen through Pearson correlation value. Correlation values range from -1,000 to 1,000. The value of -1.000 shows a very strong but negative correlation, while the value of 1,000 indicates a very strong correlation/very closely directed positively.

The results of the analysis (at 99% confidence level) obtained the correlation value between variables very high runoff ( $Q$ ) ranges from 0.849 to 0.999 with variable length of river order ( $x_1$ ), river length ( $x_2$ ), watershed ( $x_3$ ), roving watershed ( $x_4$ ), average  $Rb(x_5)$ , Flow density ( $x_6$ ), texture ratio ( $x_8$ ), Roughness number  $Rn(x_{10})$ .

This means that there is a strongly significant relationship between runoff and long river order, river length, basin area, perimeter watershed, average  $Rb$ , flow density, texture ratio, roughness number  $Rn$ . While the value of strong correlation is seen between runoff with  $Tc$  concentration time of 0.629. This means at a significance level of 5% or a 95% confidence level, there is a strong relationship between runoff and concentration time ( $Tc$ ). The correlation value is strong enough at flow frequency ( $x_7$ ), relief ( $x_9$ ) and green area (forest, tree, shrub, yard, rice field, field, garden) ( $x_{14}$ ). The low correlation value between runoff and variable flow coefficient  $C(x_{12})$  of 0.319 with significant level and negative correlation of 0.234 for variable circularity ratio  $Rc(x_{13})$ .

### 4.2 Characteristic of Lambidaro sub-Basin

The morphometric characteristics of the Lambidaro watershed are shown in Fig. 3. Land

utilization in the Lambidaro sub-basin is dominated by shrubs, trees, fields and forests ranging from 72%, settlements ranging from 4.74% to potentially changing land use, such as for settlement development. Settlement construction mainly occurs in right Lambidaro (Lambidaro-2) sub-watershed close to the main road / outer shaft of Palembang City (Musidua bridge). As part of left Lambidaro (Lambidaro-1) sub-basin is dominated by bushes and swamps. The sub-watershed of Lambidaro river has varying altitude less than 10 m msl in estuary area up to 36 m in upstream area. The percentage of the slope is

dominated by 0-3% and more than 8% with a maximum height of 36 msl in the upstream area. River conditions are still natural, especially in part of left Lambidaro, while some rivers in part of right Lambidaro sub-basin have been normalized by cliff reinforcement.

With the condition of land use, slope, flow density and soil type, the range of runoff coefficient in Lambidaro sub-basin shows the runoff coefficient value of 0.66. This means that 34% of the total rainfall falls on the Lambidaro river sub-basin can still be infiltrated (see Figure 3).

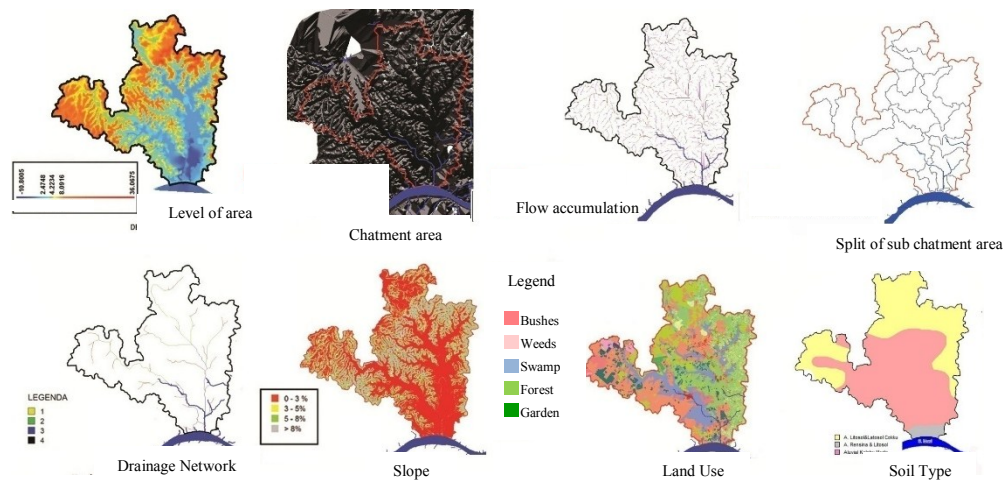


Fig. 3 Characteristic of morfometry Lambidaro sub-basin

#### 4.3 Hydrodynamic model of Lambidaro watershed

The simulation of the Duflow-ArcGIS model was conducted on the Lambidaro watershed. Schematic of the water system based on DEM extraction with flow patterns that resulted in sub-basin and drainage line boundaries to illustrate runoff on the floodwaters was constructed first (Figure 4). The Lambidaro sub-basin network scheme was built by entering the cross-profile data as well as extending the channels per segment based on the measurement results in the field. Channel width ranges from 11 - 18 m. The boundary conditions for the Duflow model consist of upper boundary conditions such as runoff from upstream Lambidaro watershed and downstream boundary conditions, such as water levels at the mouth of the Lambidaro river. The rainfall hydrology parameter was taken from the analysis of the distribution of maximum daily rainfall by Gumbell method for a 25-year period of 163 mm/day. The weighted C values of each Lambidaro sub-basin were calculated from the results of spatial analysis of land use, slope, soil type and flow density per sub-watershed as shown in Fig.4b. The water level in certain segments of

drainage network of Lambidaro watershed is shown in Figure 4c. The results of the hydrodynamic modeling, the existing conditions of the Lambidaro sub-watershed were approached with a 25-year return period scenario.

The water level on each segment was then transformed into the DEM sub of the Lambidaro sub-basin, and interpolated by the ArcGIS procedure to obtain the inundation distribution that will occur for the 25-year anniversary scenario. The results of the analysis of the distribution of inundation of Lambidaro sub-basin were classified into six classifications, namely: (1) unlogged areas; (2) flooded with altitude less than 0.25 m; (3) altitude 0.25 - 0.5 m; (4) Altitude of 0.5-0.75 m; (5) altitude of 0.75-1 m and (6) heights of more than 1 m. The result of hydrodynamic modeling using Duflow model was followed by analysis of inundation distribution that will occur with 25 year period return scenario seen as in Figure 4d. The flooded areas of the Lambidaro sub-basin are the areas of flow accumulation and from field observations are low areas with a slope of 0-3% with the type of land use in swamp dominance. The calibration of this model is shown by the high suitability of inundation that occurs in the field with  $R^2 = 0.869$ .

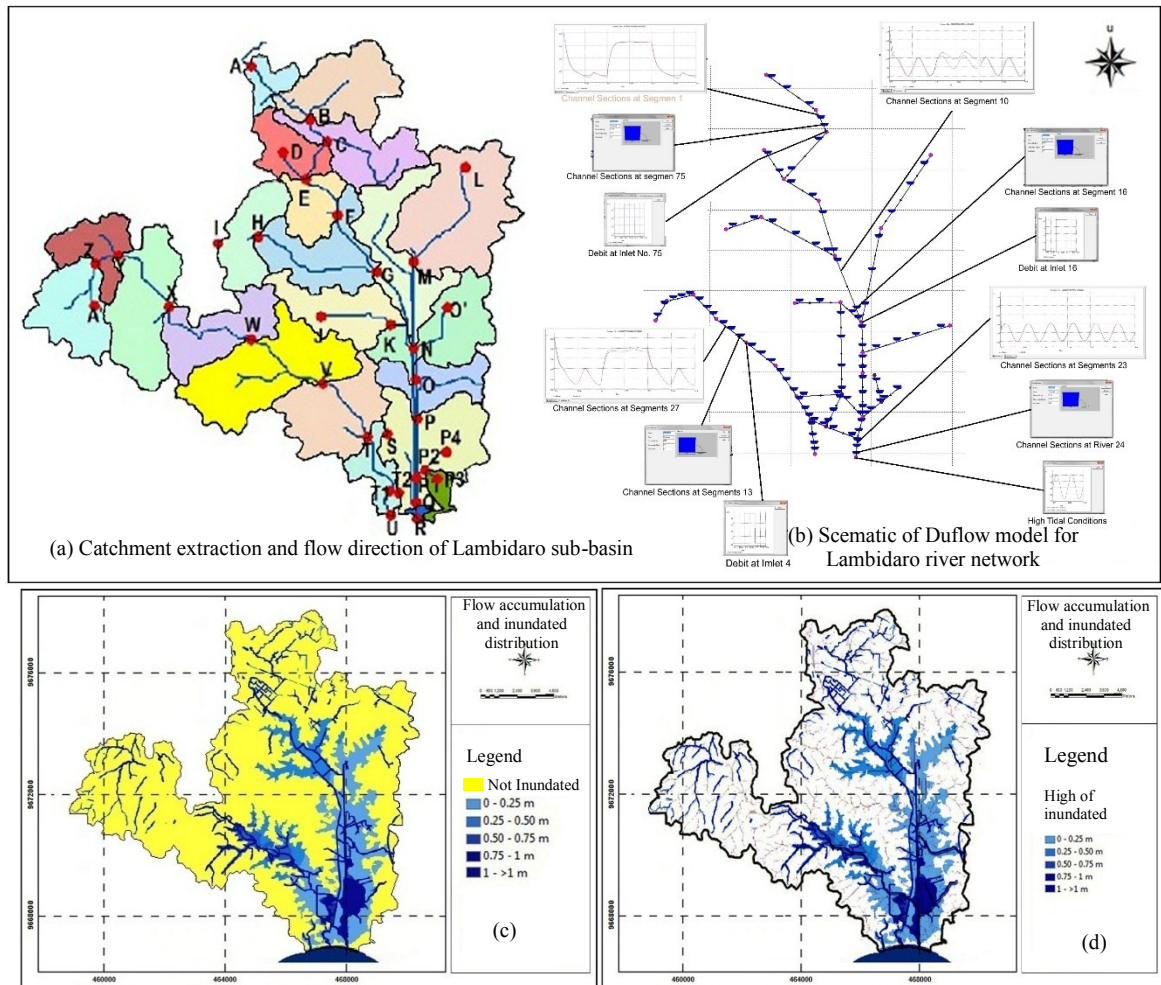


Fig. 4 Drainage network flood simulation of Lambidaro sub-basin: (a) Chatment extraction and flow direction of Lambidaro sub-basin (b) Scematic and drainage network; (c) distribution of inundation due to land use change; (d) the puddle area is assembled with flow accumulation

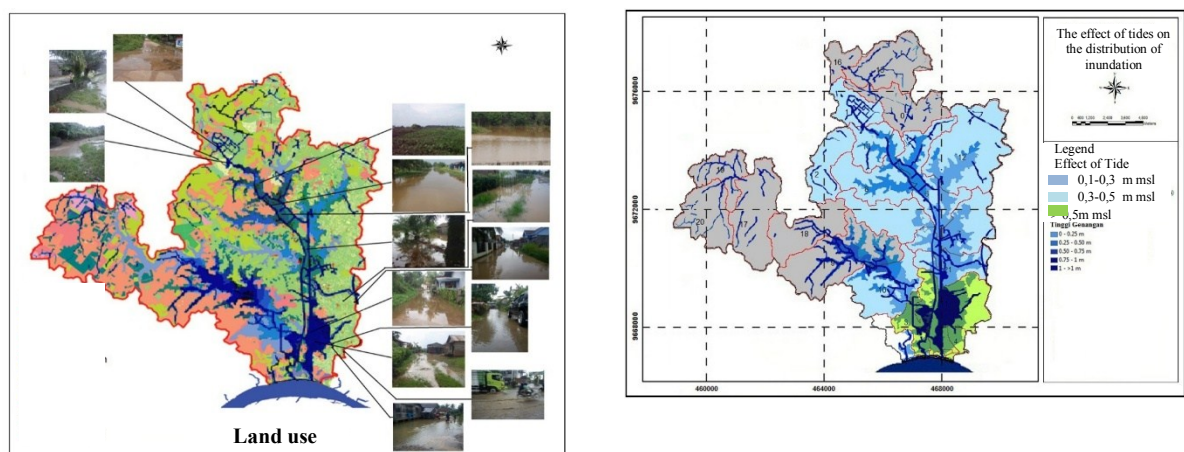


Fig. 5 Distribution of inundation is arranged with Lambidaro sub-waters upstream, middle and downstream

The influence of inundation in the upper Lambidaro watershed is 756.81 ha, 2821,6 ha, and downstream 513,23 ha. As for the part of left Lambidaro sub-watershed, the upstream area of

1854.5 ha, middle 380.5 ha and downstream 131.1 ha. The distribution of inundation stacked with Lambidaro sub-basin can be seen in Figure 5.

#### 4.4 Land use change scenarios

Zoning scenario to see the effect of land use change on the inundation distribution that will

occur in Lambidaro sub-basin. Land use change scenario is made as many as 5 scenarios, namely:

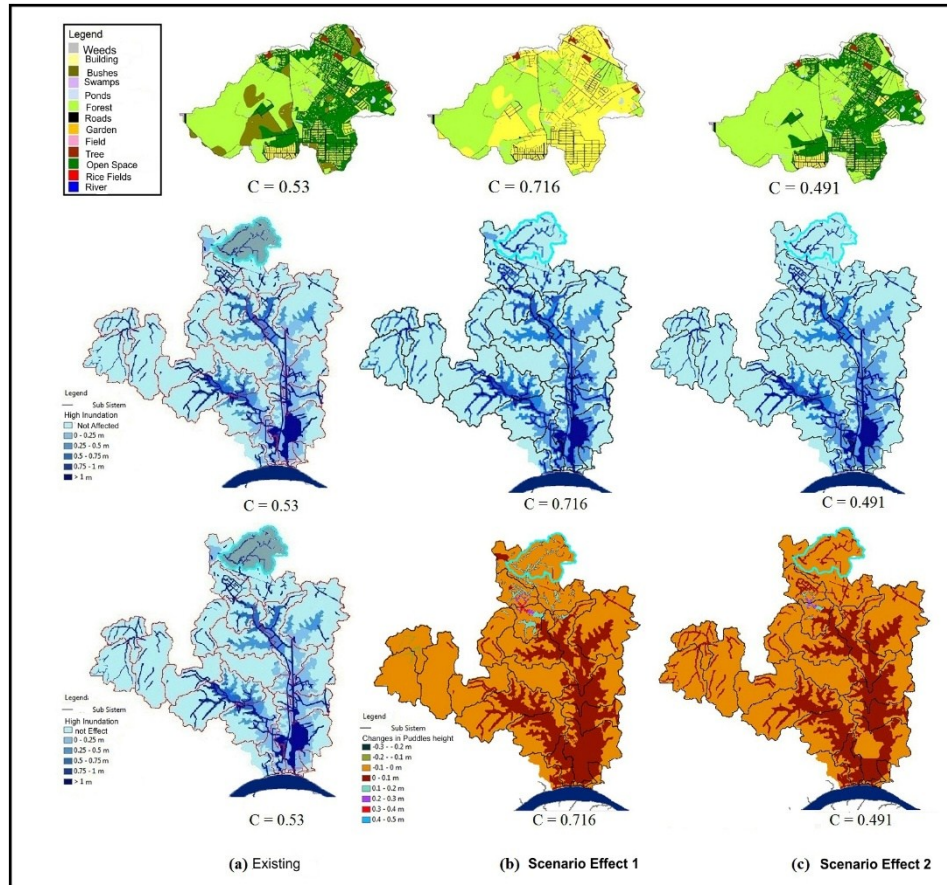


Fig. 6 Effects of land use change of Lambidaro upstream basin

- (1) The first scenario is changing the type of land use area that is still possible to be converted into a green area (urban forest, park) so it can decrease the value of  $C$ .
- (2) The second scenario is changing the type of land utilization of Lambidaro-2 sub-basin of the right section that may still be converted into a settlement (see the current city development) resulting in an increase in the value of  $C$ .
- (3) The third scenario is similar to the first scenario is only done on the part of Lambidaro-1 sub-basin.
- (4) The fourth scenario is the same as the second scenario and is only done on the part of Lambidaro-1 sub-basin.
- (5) The fifth scenario is changing land use with different  $C$  values ranging from 0.2 to 0.9

Some of the effects of land use change scenarios on upstream, mid and downstream sub-watersheds are minimizing and increasing the value of the runoff coefficient  $C$  per sub-watershed

were done to reduce and increase the inundation shown in Fig.6.

#### 5. CONCLUSION

1. There is a strongly significant relationship between runoff and river length, watershed area, perimeter watershed, average  $Rb$ , flow density, texture ratio, roughness number  $Rn$ .
2. There is a strong relationship between runoff and concentration time ( $Tc$ ).
3. The correlation is strong enough on the Frequency of flow and Relief with the forest area
4. The effect of land-use change with several scenarios made in the Lambidaro sub-basin proves that if land use change is not well controlled, the extent of the inundation will extend from downstream, middle to upstream



## ACKNOWLEDGMENTS

Acknowledgments are submitted to the Directorate of Research and Community Service, Ministry of Research Technology and Higher Education, for the support of Research Grants Higher Education for the period of study 2016-2018.

## 7. REFERENCE

- [1] B.J.M. Goes, S.E., Howarth, R.B, Wardlaw, I.R, Hancock and U.N. Parajuli, Integrated water resources management in an insecure river basin: a case study of Helmand River Basin, Afghanistan., International Journal of water resources Development, Vol. 32, Issue 1,2014
- [2] Rosmalinda Permatasari, Dantje Kardana Natakusumah, Arwin Sabar, Determining Peak Discharge Factor Using Synthetic Unit Hydrograph Modelling (Case Study : Upper Komering South Sumatera, Indonesia), International Journal of Geomate, Vol. 13, Issue 36, 2017, pp.1-5
- [3] Seemanta S. Bhagabati, Akiyuki Kawasaki, Consideration of the rainfall-run-off-inundation (RRI) Model for flood mapping in a deltaic area of Myanmar, Hydrological Research Letter, 2017
- [4] Province of South Sumatera, *Revised Regional Spatial Plan of South Sumatera Province Year 2016-2036*, 2016, ppIII 1-6
- [5] Dinar DA Putranto, Sarino, Yuono, AL., "Flood modeling for mitigation and management of drainage system of Palembang city", Research report, LPPM-UNSRI, 2008, 1-6
- [6] Bana E, Costa CA, Da Silva PA, Nunes Correia F., *Multicriteria Evaluation of Flood Control Measures: The Case of Ribeirado Livramento. Water Resource Manag*, 2004,18 (21): 263–283
- [7] Majid Mirzael, Application of a rainfall-runoff model for regional-scale flood inundation mapping for the Langat River Basin, International Journal of GEOMATE, 2017
- [8] Hamim SA, F Sjarkowi, Dinar DA Putranto, Totok G, *Model control of river sub-system environment in management of drainage system of Palembang City*, Dissertation, Doctor of Environmental science, post graduate program University of Sriwijaya, 2013, p 4-16
- [9] Government Regulation no. 26, The National Spatial Plan, The secretariat of the Republic of Indonesia, 2008
- [10] Puspics-UGM "Preparation of Integrated Musi River Basin Management Plan", Musi River Basin Management Area, Research Report,2013, 77-80
- [11] Dinar DA Putranto, Sarino, and Yuono AL, "Digital field model for rainfall-runoff modeling of sedimentation analysis regionally in the Musi basin", Research report, University of Sriwijaya, 2015
- [12] Province of South Sumatera, *Revised Regional Spatial Plan of South Sumatera Province Year 2016-2036*, Report Planning, 2016, pIII 1-6

---

Copyright © Int. J. of GEOMATE. All rights reserved, including the making of copies unless permission is obtained from the copyright proprietors.

---

# Forward from Author 4

International Journal of GEOMATE



## ISI

---

- Revisi Mei 2018
- Response by Author to Reviewr

# INTEGRATION OF SURFACE WATER MANAGEMENT IN URBAN AND REGIONAL SPATIAL PLANNING

\*Putranto DA Dinar<sup>1</sup>, Sarino<sup>2</sup>, Yuono AL<sup>3</sup>, Juliana Ch Imroatul<sup>4</sup>, and Hamim SA<sup>5</sup>

<sup>1</sup>Post Graduate Program; <sup>2,3,4</sup>Faculty of Engineering, University of Sriwijaya, Indonesia

\*Corresponding Author, Received: 15 Oct. 2017, Revised: 16 Dec. 2017, Accepted: 20 Jan. 2017

**ABSTRACT:** It is necessary to analyze the conditions of the watershed hydrometry, the type of land use, the duration and the time of rain, the tidal height, which is modeled spatially, in order to support in decision making for spatial management and water management. Palembang Metropolitan City is one of the major cities on the island of Sumatra, which is regionally included in the Musi Watershed area. Hydrologically Palembang City is located at the mouth of the Musi river, with an altitude of less than 20 m above the mean sea level. When the maximum rainfall occurs in the watershed Area, Palembang City will be affected by tidal water, and runoff on the sub-watershed in Palembang city can not be flowed through the main channel within Palembang City, due to the tide of Musi river water. This study aims to show the relationship between watershed hydrometry, land use change management, rain intensity, and tidal influences on the watershed area, with various scenarios that will affect the runoff discharge and distribution of inundation that occur in the watershed area. Taking a case study of the Lambidaro sub-basin, in the Palembang City area, all sub-basin parameters that have been tested were modeled by a using duflow to calculate the extent of runoff and flood flow tracking in the river. The inundation distribution occurring in the sub watershed was obtained by combining the results of hydrodynamic analysis and spatial analysis. Based on the results obtained it is concluded that there is a strong spatial relationship between land use and sub-basin morphometry and its effect on the extent of surface runoff.

**Keywords:** *Land Use Change, flooding and puddles, Run-off, spatial management*

## 1. INTRODUCTION

Land use changes in some areas of the city in Indonesia is so fast, due to rapid urbanization and industrial development. These changes are almost entirely done by reclamation of swamps, the utilization of river banks, and conversion of forest land and agricultural land. The impact of changes in land use has changed the patterns of water drainage in sub-basin areas that exist in urban areas. The main effects of changes in drainage patterns are flooding and puddles as a result of excessive runoff [1].

Human activities have caused very significant impact on water quantity, water quality and aquatic ecology. As the result, the dangers of flooding, household and industrial waste, which, after accumulating for a long time, are unlikely to return to normal or require enormous costs for recovery.

Run-off problems with peak flood and inundation characteristics are influenced by several factors, such as urbanization, unsuitable landfill, tidal effects, as well as sedimentation and river-flow pollutants from upstream areas and other small rivers that form the sub-watersheds in the area [2].

Flow management capability, run-off mitigation, infiltration and water quality all have relevance to land use conditions. Furthermore, the connection between the water management system

and spatial planning is one of the important keys that must be done if they want to play a role in reducing the danger of flooding. However, in reality in every spatial arrangement, the two systems, namely spatial planning and water management have never been integrated. On this basis, an analysis of hydro topographic conditions, type of land cover, duration and time of rain, tidal height, are modeled using spatial analysis, in order to support decision making for spatial management and water management [3].

## 2. CITY DEVELOPMENT AND FLOOD PROBLEM IN SOUTH SUMATERA AREA

Similar to the development of several regions in Indonesia, the province of South Sumatra has the development of cities that is very significant. It can be seen from the population growth which averagely reached 1.44% with the population of 7,481,200 in 2010 [4] of which, 1,468,000 are in Palembang (19.62%). If the average population growth in South Sumatra remains at 1.88%, then it is estimated that in 2030, the population in South Sumatra province will reach 10,166,760 people and 18.97% will be in Palembang City.

With such a large population growth, there will be concentration of population in big cities in South Sumatra Province especially in Palembang City, which will cause expansion of land use for

various urban activities. The expansion that will change the various functions of the water reservoir land, is transformed into a developed one, and will neglect the watershed ecosystem.

Based on data from BMKG (2010), the highest rainfall in South Sumatera Province is 18 - <34.87 mm/day and the peak rainfall in November, and the lowest rainfall <18 mm/day, occurs every in May-August. Surface water is difficult to predict in relation to space and time distribution. While the AWLR which is used to record water level in several locations along the river has not worked properly. This has caused much constraints to predict the occurrence of peak flood and areas that will occur. In October (2016), the city of Lubuk Linggau, and several sub-districts in Musi Rawas district have experienced floods, the city of Sekayu and several sub-districts in Musi Banyuasin regency in September (2016), Inderalaya city and several sub-districts in Ogan Ilir Regency (October, 2016), Kayu Agung city and several sub-districts in Ogan Komering Ilir regency, Pangkalan Balai City and several sub-districts in Banyuasin regency, and Palembang City itself always experiences flood in every rainy season with high intensity.

Efforts to control floods have been undertaken by several cities that often experience floods every year. In Jakarta City floodway canal and biopore has been made and in Semarang City, a polder system has been also built. But all of them have not yet shown that the problem of annual floods can be overcome. All flood control systems, must depart from existing watershed ecosystem conditions. From these conditions, It requires new analysis by simulation to determine the flood discharge with each return period, which finally can be used to determine the appropriate drainage system in the area [5]. Thus a specific approach through more useful and accurate techniques is necessary. Transforming data into a Geographic Information System using Multicriteria Spatial Analysis in decision making [6] can be used as a policy and technical combination solution and technical, and also as a model in presenting the watershed environmental conditions for better data quality and analysis [7].

## 2.1 Case Study

As an example of frequent inundation in the Lambidaro sub-basin especially in the downstream area and around the floodplain, during the rainy season and high tides is Lambidaro sub basin with an area of 65.25 km<sup>2</sup> is a sub watershed which has different morphometric characteristics from other sub watersheds. Based on the drainage pattern it is divided into two sub-watersheds namely part of left Lambidaro (Lambidaro-1) Sub-watershed and

part of right Lambidaro (Lambidaro-2) sub-watershed which leads to the Musi river.

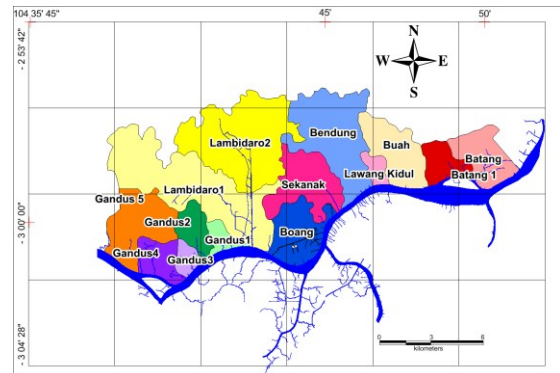


Fig.1 Lambidaro sub-basin at Musi downstream sub-basin area

## 3. METHODOLOGY

To anticipate the amount of runoff water, due to inappropriate land allocation, a multicriteria analysis is needed in every decision of land allocation. Land Allocation Management System (SIMAL) is a watershed analysis system developed using GIS or Geographic Information System (GIS) using land use change parameters, morphometry, and hydrometry of DAS [8].

### 3.1 Research Site

The study material is to explain the effect of surface runoff on land use change, the location of the study is the Lambidaro sub-basin (Figure 1), which is one of 16 sub-basins that form the drainage system of Palembang which discharges into the Musi River, through the city of Palembang. With an area of 65.42 Km<sup>2</sup>.

### 3.2 Research Data

The data used in this research are river hydrometry data, longitudinal section ( $l$ ) and river cross-section ( $b$ ), river bed invert ( $ls$ ), watershed area ( $A$ ) and density ( $r$ ). While spot height data and land use are needed to analyze the infiltration coefficient ( $c$ ) and time concentration ( $Tc$ ). And the ever-changing dynamic data is the rainfall data ( $R$ ) needed to calculate the rain intensity ( $I$ ) in each sub-watershed.

### 3.3 Research Methods

The method used in this research is using hydrology model and Geographic Information System (GIS). The hydrodynamic model Duflow was used to calculate the amount of runoff, which

would also be used to track flood flow in rivers [11].

The hydrodynamic analysis was performed on selected river sub-systems that have been obtained from the results of cluster analysis. This analysis utilizes the 1D (Duflow) non-steady flow model with the maximum rainfall intensity conditions of the 25th anniversary period of the previous hydrological analysis results as well as the results of tidal observation forecasting at the sub-systems of selected river sub-systems. The first stage in the hydrodynamic analysis was by establishing a scheme of the hydrodynamic network in sub-watershed adapted to the results through terrain morphology and terrain processing analysis on ArcGIS-ARC Hydro and field conditions, then incorporating the dimensions of water structure, cross section, boundary conditions (tidal, rain results of hydrological analysis) and flow discharge. After calculation of each segment/cross section will be obtained some hydraulic parameters such as flood water level, water flow rate, channel flow and water level in river and channel were obtained.

The inundation distribution occurring in the sub-river system was obtained by combining the results of hydrodynamic analysis and spatial analysis. The influence of the tides in the main river entering the subchannel of the river system is measured in height and the area of distribution so as to obtain the distribution of water level in the river subsystem. Then the distribution of water level is compiled with the topographic condition of the sub-system of the relevant river based on 0.5-meter contour interval so as to obtain the distribution of the classified high pools that occur in each selected river sub-system with the 25th anniversary of rainfall intensity.

With several scenarios of land use change, it can be seen how much the changes in inundation height due to land use change in the selected sub-system. This scenario was used as a way to see the condition of the sub-system of a river which in turn will influence the pattern of river environmental control that will be done. The first scenario is to change the type of land use so that the value of  $C$  tends to decrease which became an indicator of the condition of the river subsystem becomes better. The second scenario was changing the type of land use so that the value of  $C$  tends to increase, this condition could explain that river subsystem had a condition that was considered to be disturbed.

The disruption of the sub-system condition of the river is caused by the increase of water runoff caused by the decrease of surface soil absorption capacity to water, thus increasing the volume of surface water flow if the surface condition of the soil is almost largely a wake up area

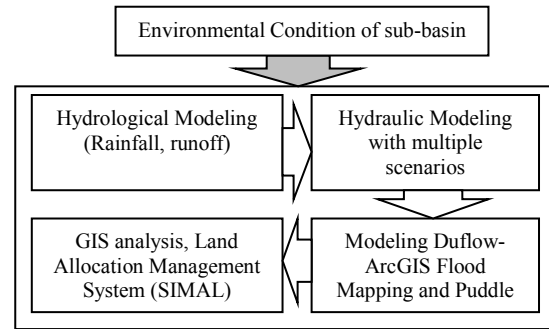


Fig. 2 Flow Chart of research methods

## 4. RESULTS AND DISCUSSION

### 4.1 Correlation Between Surface Run-off with Morphometric Characteristic Variable

This correlation was analyzed to address the problem of spatial relationships between land use and sub-basin morphometry and its effect on the extent of surface runoff. The strong correlation between independent variables (characteristic of sub-basin morphometry) and the dependent variable of runoff ( $Q$ ), is seen through Pearson correlation value. Correlation values range from -1,000 to 1,000. The value of -1.000 shows a very strong but negative correlation, while the value of 1,000 indicates a very strong correlation/very closely directed positively.

The results of the analysis (at 99% confidence level) obtained the correlation value between variables very high runoff ( $Q$ ) ranges from 0.849 to 0.999 with variable length of river order ( $x_1$ ), river length ( $x_2$ ), watershed ( $x_3$ ), roving watershed ( $x_4$ ), average  $Rb(x_5)$ , Flow density ( $x_6$ ), texture ratio ( $x_8$ ), Roughness number  $Rn(x_{10})$ .

This means that there is a strongly significant relationship between runoff and long river order, river length, basin area, perimeter watershed, average  $Rb$ , flow density, texture ratio, roughness number  $Rn$ . While the value of strong correlation is seen between runoff with  $Tc$  concentration time of 0.629. This means at a significance level of 5% or a 95% confidence level, there is a strong relationship between runoff and concentration time ( $Tc$ ). The correlation value is strong enough at flow frequency ( $x_7$ ), relief ( $x_9$ ) and green area (forest, tree, shrub, yard, rice field, field, garden) ( $x_{14}$ ). The low correlation value between runoff and variable flow coefficient  $C(x_{12})$  of 0.319 with significant level and negative correlation of 0.234 for variable circularity ratio  $Rc(x_{13})$ .

### 4.2 Characteristic of Lambidaro sub-Basin

The morphometric characteristics of the Lambidaro watershed are shown in Fig. 3. Land

utilization in the Lambidaro sub-basin is dominated by shrubs, trees, fields and forests ranging from 72%, settlements ranging from 4.74% to potentially changing land use, such as for settlement development. Settlement construction mainly occurs in right Lambidaro (Lambidaro-2) sub-watershed close to the main road / outer shaft of Palembang City (Musidua bridge). As part of left Lambidaro (Lambidaro-1) sub-basin is dominated by bushes and swamps. The sub-watershed of Lambidaro river has varying altitude less than 10 m msl in estuary area up to 36 m in upstream area. The percentage of the slope is

dominated by 0-3% and more than 8% with a maximum height of 36 msl in the upstream area. River conditions are still natural, especially in part of left Lambidaro, while some rivers in part of right Lambidaro sub-basin have been normalized by cliff reinforcement.

With the condition of land use, slope, flow density and soil type, the range of runoff coefficient in Lambidaro sub-basin shows the runoff coefficient value of 0.66. This means that 34% of the total rainfall falls on the Lambidaro river sub-basin can still be infiltrated (see Figure 3).

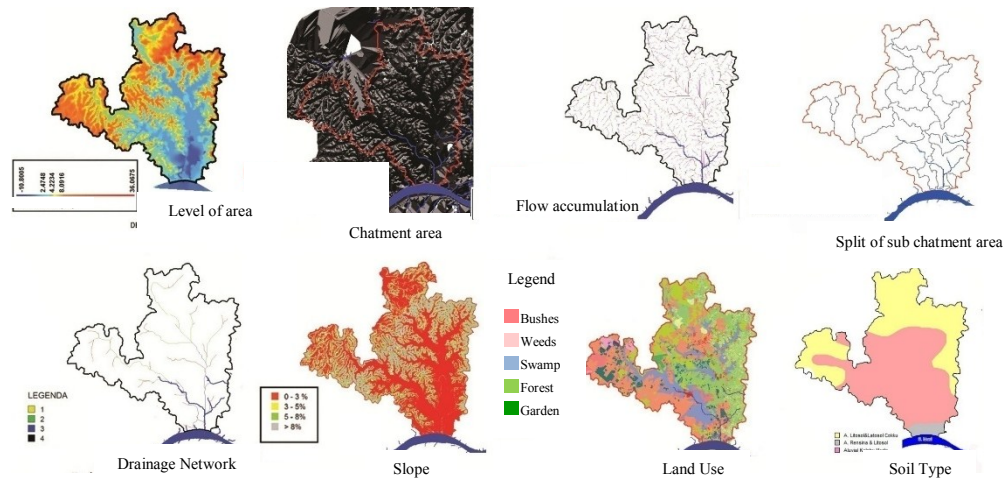


Fig. 3 Characteristic of morfometry Lambidaro sub-basin

#### 4.3 Hydrodynamic model of Lambidaro watershed

The simulation of the Duflow-ArcGIS model was conducted on the Lambidaro watershed. Schematic of the water system based on DEM extraction with flow patterns that resulted in sub-basin and drainage line boundaries to illustrate runoff on the floodwaters was constructed first (Figure 4). The Lambidaro sub-basin network scheme was built by entering the cross-profile data as well as extending the channels per segment based on the measurement results in the field. Channel width ranges from 11 - 18 m. The boundary conditions for the Duflow model consist of upper boundary conditions such as runoff from upstream Lambidaro watershed and downstream boundary conditions, such as water levels at the mouth of the Lambidaro river. The rainfall hydrology parameter was taken from the analysis of the distribution of maximum daily rainfall by Gumbell method for a 25-year period of 163 mm/day. The weighted C values of each Lambidaro sub-basin were calculated from the results of spatial analysis of land use, slope, soil type and flow density per sub-watershed as shown in Fig.4b. The water level in certain segments of

drainage network of Lambidaro watershed is shown in Figure 4c. The results of the hydrodynamic modeling, the existing conditions of the Lambidaro sub-watershed were approached with a 25-year return period scenario.

The water level on each segment was then transformed into the DEM sub of the Lambidaro sub-basin, and interpolated by the ArcGIS procedure to obtain the inundation distribution that will occur for the 25-year anniversary scenario. The results of the analysis of the distribution of inundation of Lambidaro sub-basin were classified into six classifications, namely: (1) unlogged areas; (2) flooded with altitude less than 0.25 m; (3) altitude 0.25 - 0.5 m; (4) Altitude of 0.5-0.75 m; (5) altitude of 0.75-1 m and (6) heights of more than 1 m. The result of hydrodynamic modeling using Duflow model was followed by analysis of inundation distribution that will occur with 25 year period return scenario seen as in Figure 4d. The flooded areas of the Lambidaro sub-basin are the areas of flow accumulation and from field observations are low areas with a slope of 0-3% with the type of land use in swamp dominance. The calibration of this model is shown by the high suitability of inundation that occurs in the field with  $R^2 = 0.869$ .

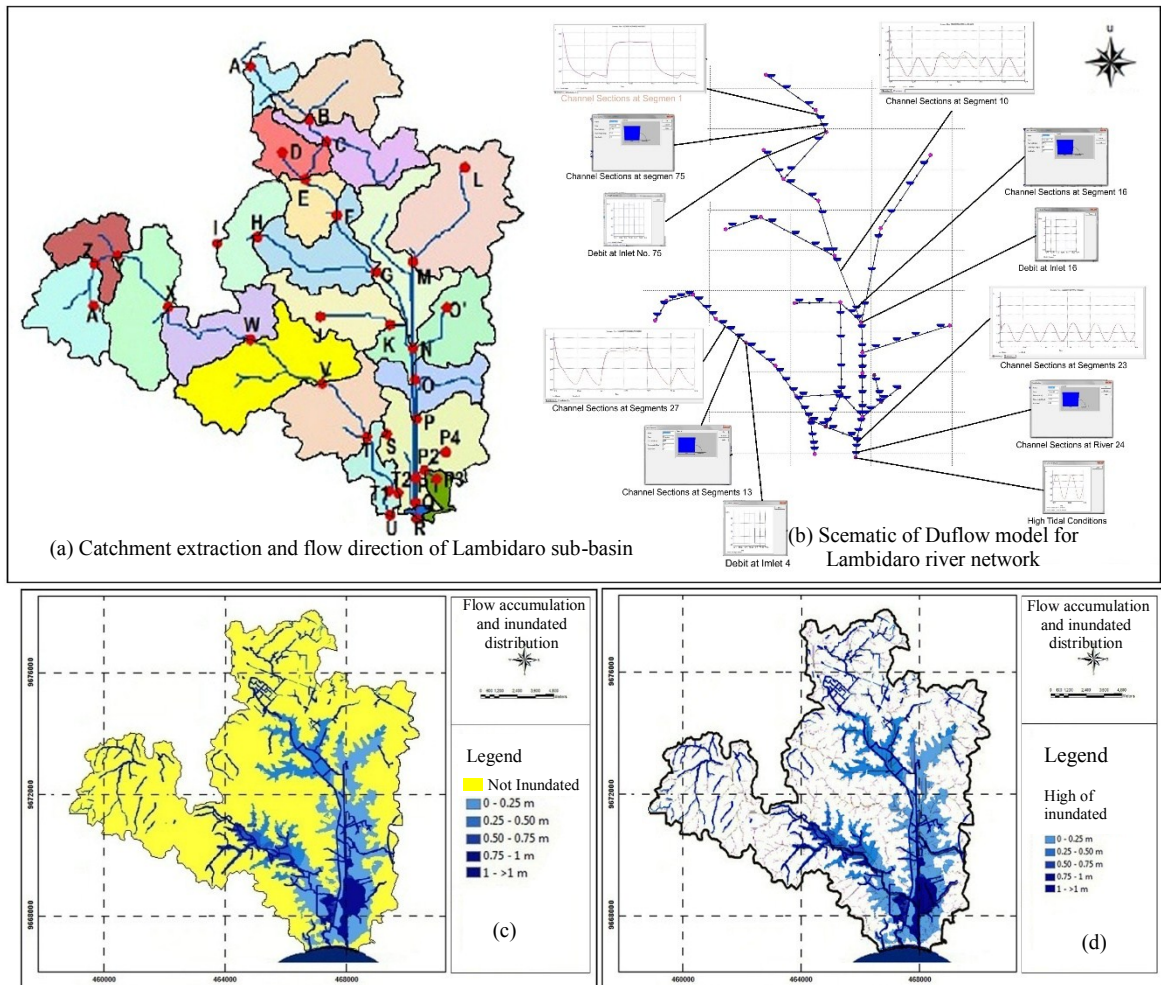


Fig. 4 Drainage network flood simulation of Lambidaro sub-basin: (a) Chatment extraction and flow direction of Lambidaro sub-basin (b) Scematic and drainage network; (c) distribution of inundation due to land use change; (d) the puddle area is assembled with flow accumulation

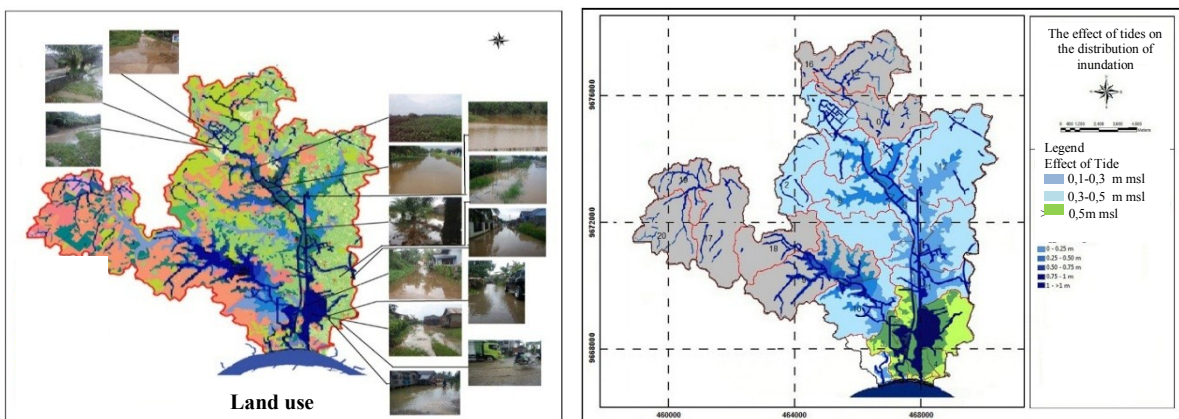


Fig. 5 Distribution of inundation is arranged with Lambidaro sub-waters upstream, middle and downstream

The influence of inundation can be seen in Figure 5, the upper Lambidaro watershed is 756.81 ha, 2821.6 ha, and downstream 513.23 ha. As for the part of left Lambidaro sub-watershed, the upstream area of 1,854.5 ha, middle 380.5 ha and

downstream 131.1 ha.

#### 4.4 Land use change scenarios

Zoning scenario to see the effect of land use change on the inundation distribution that will

occur in Lambidaro sub-basin. Land use change

scenario is made as many as 5 scenarios, namely:

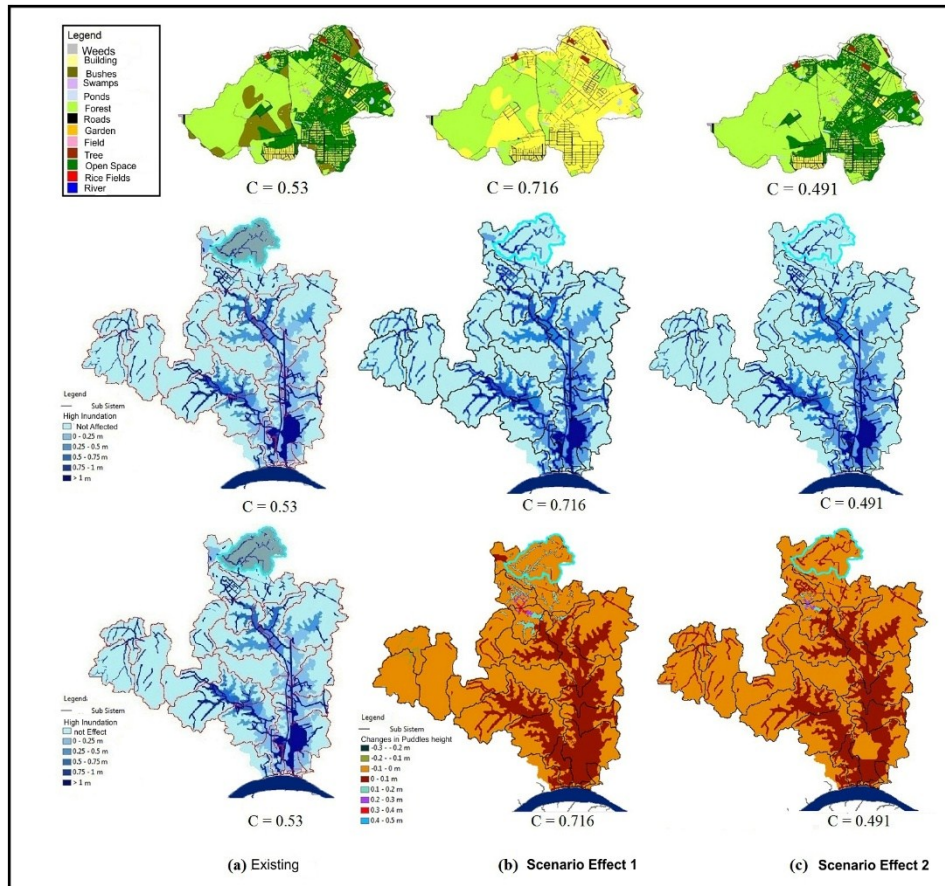


Fig. 6 Effects of land use change of Lambidaro upstream basin

- (1) The first scenario is changing the type of land use area that is still possible to be converted into a green area (urban forest, park) so it can decrease the value of  $C$ .
- (2) The second scenario is changing the type of land utilization of Lambidaro-2 sub-basin of the right section that may still be converted into a settlement (see the current city development) resulting in an increase in the value of  $C$ .
- (3) The third scenario is similar to the first scenario is only done on the part of Lambidaro-1 sub-basin.
- (4) The fourth scenario is the same as the second scenario and is only done on the part of Lambidaro-1 sub-basin.
- (5) The fifth scenario is changing land use with different  $C$  values ranging from 0.2 to 0.9

Some of the effects of land use change scenarios on upstream, mid and downstream sub-watersheds are minimizing and increasing the value of the runoff coefficient  $C$  per sub-watershed were done to reduce and increase the inundation shown in Fig.6.

## 5. CONCLUSION

1. There is a strongly significant relationship between runoff and river length, watershed area, perimeter watershed, average  $Rb$ , flow density, texture ratio, roughness number  $Rn$ .
2. There is a strong relationship between runoff and concentration time ( $Tc$ ).
3. The correlation is strong enough on the Frequency of flow and Relief with the forest area
4. The effect of land-use change with several scenarios made in the Lambidaro sub-basin proves that if land use change is not well controlled, the extent of the inundation will extend from downstream, middle to upstream

## ACKNOWLEDGMENTS

Acknowledgments are submitted to the Directorate of Research and Community Service, Ministry of Research Technology and Higher Education, for the support of Research Grants Higher Education.



## 7. REFERENCE

- [1] B.J.M. Goes, S.E., Howarth, R.B, Wardlaw, I.R, Hancock and U.N. Parajuli, Integrated water resources management in an insecure river basin: a case study of Helmand River Basin, Afghanistan., International Journal of water resources Development, Vol. 32, Issue 1,2014
- [2] Rosmalinda Permatasari, Dantje Kardana Natakusumah, Arwin Sabar, Determining Peak Discharge Factor Using Synthetic Unit Hydrograph Modelling (Case Study : Upper Komering South Sumatera, Indonesia), International Journal of Geomate, Vol. 13, Issue 36, 2017, pp.1-5
- [3] Seemanta S. Bhagabati, Akiyuki Kawasaki, Consideration of the rainfall-run-off-inundation (RRI) Model for flood mapping in a deltaic area of Myanmar, Hydrological Research Letter, 2017
- [4] Province of South Sumatera, *Revised Regional Spatial Plan of South Sumatera Province Year 2016-2036*, 2016, ppIII 1-6
- [5] Dinar DA Putranto, Sarino, Yuono, AL., Flood modeling for mitigation and management of drainage system of Palembang city”, Research report, LPPM-UNSRI, 2008, 1-6
- [6] Bana E, Costa CA, Da Silva PA, Nunes Correia F,. *Multicriteria Evaluation of Flood Control Measures: The Case of Ribeirado Livramento. Water Resource Manag*, 2004,18 (21): 263–283
- [7] Majid Mirzael, Application of a rainfall-runoff model for regional-scale flood inundation mapping for the Langat River Basin, International Journal of GEOMATE, 2017
- [8] Hamim SA, F Sjarkowi, Dinar DA Putranto, Totok G, *Model control of river sub-system environment in management of drainage system of Palembang City*, Disertation, Doctor of Environmental science, post graduate program University of Sriwijaya, 2013, p 4-16
- [9] Government Regulation no. 26, The National Spatial Plan, The secretariat of the Republic of Indonesia, 2008
- [10]Puspics-UGM “Preparation of Integrated Musi River Basin Management Plan”, Musi River Basin Management Area, Research Report,2013, 77-80
- [11]Dinar DA Putranto, Sarino, and Yuono AL, “Digital field model for rainfall-runoff modeling of sedimentation analysis regionally in the Musi basin”, Research report, University of Sriwijaya, 2015
- [12]Province of South Sumatera, *Revised Regional Spatial Plan of South Sumatera Province Year 2016-2036*, Report Planning, 2016, pIII 1-6

---

Copyright © Int. J. of GEOMATE. All rights reserved, including the making of copies unless permission is obtained from the copyright proprietors.

---



# International Journal of GEOMATE

A Scientific International Journal on Geotechnique, Construction Materials and Environment

## PUBLISHING AGREEMENT

Dear Sir,

I am required to obtain copyright of papers from authors for the term of copyright and I would be grateful if you would confirm your acceptance by signing and returning the agreement below. I will not withhold permission for any reasonable request from you to publish any part of this paper in connection with any other work by you, provided the usual acknowledgements are given regarding copyright notice and reference to the original publication.

If it is appropriate, the author's employer may sign this agreement and, in any event, the employer may reserve the right to use the paper internally or for promotional purposes only by indicating to this agreement.

The author warrants that the manuscript is the author's original work and has not been published before (if excerpts from copyrighted works are included, the author will obtain written permission from the copyright owners and show credit to the sources in the manuscript). The author also warrants that the article contains no libellous or unlawful statements and does not infringe on the rights of others.

If the work was prepared jointly the author agrees to inform co-authors of the terms of the agreement and to sign on their behalf.

Editors-in-Chief

Name of the Journal:



## International Journal of GEOMATE

A Scientific International Journal on Geotechnique, Construction Materials and Environment

I hereby assign the copyright to my paper entitled,

### INTEGRATION OF SURFACE WATER MANAGEMENT IN URBAN AND REGIONAL SPATIAL PLANNING

+note -

If the paper is rejected, this assignment is null and void

Name of author: 1. Putranto, Dinar DA; 2. Sarino, 3. Yuono, AL; 4. Juliana, Ch Imroatul; 5. Hamim, SA

Signature: 1.

2.

3.

4.

5.

Date: 2018, January, 15

Please send this form duly filled and signed together with your manuscript to:

Dr. Zakaria Hossain, Editor-in-Chief  
Professor, Division of Environmental Science and Technology  
Graduate School of Bioresources, Mie University  
1577 Kurima Machiya-cho  
Tsu-city, Mie 514-8507, Japan  
E-mail: zakaria@bio.mie-u.ac.jp  
Tel: +81-59-231-9578  
Fax: +81-59-231-9578



# International Journal of GEOMATE

A Scientific International Journal on Geotechnique, Construction Materials and Environment

## PUBLISHING AGREEMENT

Dear Sir,

I am required to obtain copyright of papers from authors for the term of copyright and I would be grateful if you would confirm your acceptance by signing and returning the agreement below. I will not withhold permission for any reasonable request from you to publish any part of this paper in connection with any other work by you, provided the usual acknowledgements are given regarding copyright notice and reference to the original publication.

If it is appropriate, the author's employer may sign this agreement and, in any event, the employer may reserve the right to use the paper internally or for promotional purposes only by indicating to this agreement.

The author warrants that the manuscript is the author's original work and has not been published before (if excerpts from copyrighted works are included, the author will obtain written permission from the copyright owners and show credit to the sources in the manuscript). The author also warrants that the article contains no libellous or unlawful statements and does not infringe on the rights of others.

If the work was prepared jointly the author agrees to inform co-authors of the terms of the agreement and to sign on their behalf.

Editors-in-Chief

Name of the Journal:



## International Journal of GEOMATE

A Scientific International Journal on Geotechnique, Construction Materials and Environment

I hereby assign the copyright to my paper entitled,

### INTEGRATION OF SURFACE WATER MANAGEMENT IN URBAN AND REGIONAL SPATIAL PLANNING

+note -

If the paper is rejected, this assignment is null and void

Name of author: 1. Putranto, Dinar DA; 2. Sarino, 3. Yuono, AL; 4. Juliana, Ch Imroatul; 5. Hamim, SA

Signature: 1.

2.

3.

4.

5.

Date: 2018, January, 15

Please send this form duly filled and signed together with your manuscript to:

Dr. Zakaria Hossain, Editor-in-Chief  
Professor, Division of Environmental Science and Technology  
Graduate School of Bioresources, Mie University  
1577 Kurima Machiya-cho  
Tsu-city, Mie 514-8507, Japan  
E-mail: zakaria@bio.mie-u.ac.jp  
Tel: +81-59-231-9578  
Fax: +81-59-231-9578

# Similarity

International Journal of GEOMATE



## ISI

---

- Turnitin INTEGRATION OF SURFACE WATER MANAGEMENT IN URBAN AND REGIONAL SPATIAL PLANNING

By : Putranto DA Dinar

# 13

*by* Dinar Da Putranto

---

**Submission date:** 17-Oct-2018 01:15PM (UTC+0800)

**Submission ID:** 1021494679

**File name:** Journal\_GEOMATE-28-34-18652-Dinar-May-2018.pdf (1.51M)

**Word count:** 3738

**Character count:** 19881

## INTEGRATION OF SURFACE WATER MANAGEMENT IN URBAN AND REGIONAL SPATIAL PLANNING

\*Putranto DA Dinar<sup>1</sup>, Sarino<sup>2</sup>, Yuono AL<sup>3</sup>, Juliana Ch Imroatul<sup>4</sup>, and Hamim SA<sup>5</sup>

<sup>1</sup>Post Graduate Program; <sup>2,3,4</sup>Faculty of Engineering, University of Sriwijaya, Indonesia

\*Corresponding Author, Received: 15 Oct. 2017, Revised: 16 Dec. 2017, Accepted: 20 Jan. 2017

**ABSTRACT:**It is necessary to analyze the conditions of the watershed hydrometry, the type of land use, the duration and the time of rain, the tidal height, which is modeled spatially, in order to support in decision making for spatial management and water management. Palembang Metropolitan City is one of the major cities on the island of Sumatra, which is regionally included in the Musi Watershed area. Hydrologically Palembang City is located at the mouth of the Musi river, with an altitude of less than 20 m above the mean sea level. When the maximum rainfall occurs in the watershed Area, Palembang City will be affected by tidal water, and runoff on the sub-watershed in Palembang city can not be flowed through the main channel within Palembang City, due to the tide of Musi river water. This study aims to show the relationship between watershed hydrometry, land use change management, rain intensity, and tidal influences on the watershed area, with various scenarios that will affect the runoff discharge and distribution of inundation that occur in the watershed area. Taking a case study of the Lambidaro sub-basin, in the Palembang City area, all sub-basin parameters that have been tested were modeled by a using duflow to calculate the extent of runoff and flood flow tracking in the river. The inundation distribution occurring in the sub watershed was obtained by combining the results of hydrodynamic analysis and spatial analysis. Based on the results obtained it is concluded that there is a strong spatial relationship between land use and sub-basin morphometry and its effect on the extent of surface runoff.

**Keywords:** *Land Use Change, flooding and puddles, Run-off, spatial management*

### 1. INTRODUCTION

Land use changes in some areas of the city in Indonesia is so fast, due to rapid urbanization and industrial development. These changes are almost entirely done by reclamation of swamps, the utilization of river banks, and conversion of forest land and agricultural land. The impact of changes in land use has changed the patterns of water drainage in sub-basin areas that exist in urban areas. The main effects of changes in drainage patterns are flooding and puddles as a result of excessive runoff [1].

Human activities have caused very significant impact on water quantity, water quality and aquatic ecology. As the result, the dangers of flooding, household and industrial waste, which, after accumulating for a long time, are unlikely to return to normal or require enormous costs for recovery.

Run-off problems with peak flood and inundation characteristics are influenced by several factors, such as urbanization, unsuitable landfill, tidal effects, as well as sedimentation and river-flow pollutants from upstream areas and other small rivers that form the sub-watersheds in the area [2].

Flow management capability, run-off mitigation, infiltration and water quality all have relevance to land use conditions. Furthermore, the connection between the water management system

and spatial planning is one of the important keys that must be done if they want to play a role in reducing the danger of flooding. However, in reality in every spatial arrangement, the two systems, namely spatial planning and water management have never been integrated. On this basis, an analysis of hydro topographic conditions, type of land cover, duration and time of rain, tidal height, are modeled using spatial analysis, in order to support decision making for spatial management and water management [3].

### 2. CITY DEVELOPMENT AND FLOOD PROBLEM IN SOUTH SUMATERA AREA

Similar to the development of several regions in Indonesia, the province of South Sumatra has the development of cities that is very significant. It can be seen from the population growth which averagely reached 1.44% with the population of 7,481,200 in 2010 [4] of which, 1,468,000 are in Palembang (19.62%). If the average population growth in South Sumatra remains at 1.88%, then it is estimated that in 2030, the population in South Sumatra province will reach 10,166,760 people and 18.97% will be in Palembang City.

With such a large population growth, there will be concentration of population in big cities in South Sumatra Province especially in Palembang City, which will cause expansion of land use for

various urban activities. The expansion that will change the various functions of the water reservoir land, is transformed into a developed one, and will neglect the watershed ecosystem.

Based on data from BMKG (2010), the highest rainfall in South Sumatera Province is 18 - <34.87 mm/day and the peak rainfall in November, and the lowest rainfall <18 mm/day, occurs every in May-August. Surface water is difficult to predict in relation to space and time distribution. While the AWLR which is used to record water level in several locations along the river has not worked properly. This has caused much constraints to predict the occurrence of peak flood and areas that will occur. In October (2016), the city of Lubuk Linggau, and several sub-districts in Musi Rawas district have experienced floods, the city of Sekayu and several sub-districts in Musi Banyuasin regency in September (2016), Inderalaya city and several sub-districts in Ogan Ilir Regency (October, 2016), Kayu Agung city and several sub-districts in Ogan Komering Ilir regency, Pangkalan Balai City and several sub-districts in Banyuasin regency, and Palembang City itself always experiences flood in every rainy season with high intensity.

Efforts to control floods have been undertaken by several cities that often experience floods every year. In Jakarta City floodway canal and biopore has been made and in Semarang City, a polder system has been also built. But all of them have not yet shown that the problem of annual floods can be overcome. All flood control systems, must depart from existing watershed ecosystem conditions. From these conditions, It requires new analysis by simulation to determine the flood discharge with each return period, which finally can be used to determine the appropriate drainage system in the area [5]. Thus a specific approach through more useful and accurate techniques is necessary. Transforming data into a Geographic Information System using Multicriteria Spatial Analysis in decision making [6] can be used as a policy and technical combination solution and technical, and also as a model in presenting the watershed environmental conditions for better data quality and analysis [7].

### 2.1 Case Study

As an example of frequent inundation in the Lambidaro sub-basin especially in the downstream area and around the floodplain, during the rainy season and high tides is Lambidaro sub basin with an area of 65.25 km<sup>2</sup> is a sub watershed which has different morphometric characteristics from other sub watersheds. Based on the drainage pattern it is divided into two sub-watersheds namely part of left Lambidaro (Lambidaro-1) Sub-watershed and

part of right Lambidaro (Lambidaro-2) sub-watershed which leads to the Musi river.

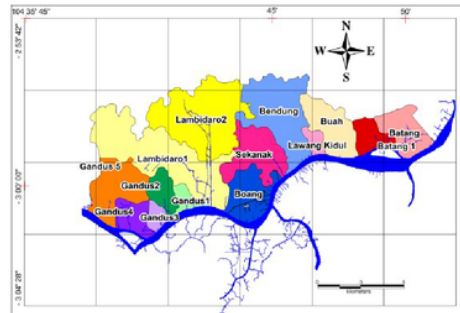


Fig.1 Lambidaro sub-basin at Musi downstream sub-basin area

### 3. METHODOLOGY

To anticipate the amount of runoff water, due to inappropriate land allocation, a multicriteria analysis is needed in every decision of land allocation. Land Allocation Management System (SIMAL) is a watershed analysis system developed using GIS or Geographic Information System (GIS) using land use change parameters, morphometry, and hydrometry of DAS [8].

#### 3.1 Research Site

The study material is to explain the effect of surface runoff on land use change, the location of the study is the Lambidaro sub-basin (Figure 1), which is one of 16 sub-basins that form the drainage system of Palembang which discharges into the Musi River, through the city of Palembang. With an area of 65.42 Km<sup>2</sup>.

#### 3.2 Research Data

The data used in this research are river hydrometry data, longitudinal section ( $l$ ) and river cross-section ( $b$ ), river bed invert ( $Is$ ), watershed area ( $A$ ) and density ( $r$ ). While spot height data and land use are needed to analyze the infiltration coefficient ( $c$ ) and time concentration ( $Tc$ ). And the ever-changing dynamic data is the rainfall data ( $R$ ) needed to calculate the rain intensity ( $I$ ) in each sub-watershed.

#### 3.3 Research Methods

The method used in this research is using hydrology model and Geographic Information System (GIS). The hydrodynamic model Duflow was used to calculate the amount of runoff, which

would also be used to track flood flow in rivers [11].

The hydrodynamic analysis was performed on selected river sub-systems that have been obtained from the results of cluster analysis. This analysis utilizes the 1D (Duflow) non-steady flow model with the maximum rainfall intensity conditions of the 25th anniversary period of the previous hydrological analysis results as well as the results of tidal observation forecasting at the sub-systems of selected river sub-systems. The first stage in the hydrodynamic analysis was by establishing a scheme of the hydrodynamic network in sub-watershed adapted to the results through terrain morphology and terrain processing analysis on ArcGIS-ARC Hydro and field conditions, then incorporating the dimensions of water structure, cross section, boundary conditions (tidal, rain results of hydrological analysis) and flow discharge. After calculation of each segment/cross section will be obtained some hydraulic parameters such as flood water level, water flow rate, channel flow and water level in river and channel were obtained.

The inundation distribution occurring in the sub-river system was obtained by combining the results of hydrodynamic analysis and spatial analysis. The influence of the tides in the main river entering the subchannel of the river system is measured in height and the area of distribution so as to obtain the distribution of water level in the river subsystem. Then the distribution of water level is compiled with the topographic condition of the sub-system of the relevant river based on 0.5-meter contour interval so as to obtain the distribution of the classified high pools that occur in each selected river sub-system with the 25th anniversary of rainfall intensity.

With several scenarios of land use change, it can be seen how much the changes in inundation height due to land use change in the selected sub-system. This scenario was used as a way to see the condition of the sub-system of a river which in turn will influence the pattern of river environmental control that will be done. The first scenario is to change the type of land use so that the value of  $C$  tends to decrease which became an indicator of the condition of the river subsystem becomes better. The second scenario was changing the type of land use so that the value of  $C$  tends to increase, this condition could explain that river subsystem had a condition that was considered to be disturbed.

The disruption of the sub-system condition of the river is caused by the increase of water runoff caused by the decrease of surface soil absorption capacity to water, thus increasing the volume of surface water flow if the surface condition of the soil is almost largely a wake up area

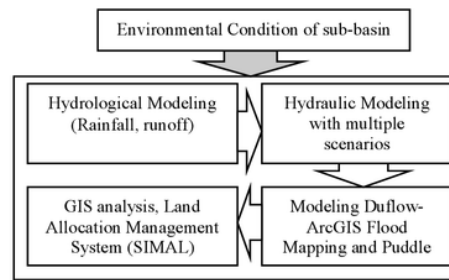


Fig. 2 Flow Chart of research methods

## 4. RESULTS AND DISCUSSION

### 4.1 Correlation Between Surface Run-off with Morphometric Characteristic Variable

This correlation was analyzed to address the problem of spatial relationships between land use and sub-basin morphometry and its effect on the extent of surface runoff. The strong correlation between independent variables (characteristic of sub-basin morphometry) and the dependent variable of runoff ( $Q$ ), is seen through Pearson correlation value. Correlation values range from -1,000 to 1,000. The value of -1,000 shows a very strong but negative correlation, while the value of 1,000 indicates a very strong correlation/very closely directed positively.

The results of the analysis (at 99% confidence level) obtained the correlation value between variables very high runoff ( $Q$ ) ranges from 0.849 to 0.999 with variable length of river order ( $x_1$ ), river length ( $x_2$ ), watershed ( $x_3$ ), roving watershed ( $x_4$ ), average  $Rb(x_5)$ , Flow density ( $x_6$ ), texture ratio ( $x_8$ ), Roughness number  $Rn(x_{10})$ .

This means that there is a strongly significant relationship between runoff and long river order, river length, basin area, perimeter watershed, average  $Rb$ , flow density, texture ratio, roughness number  $Rn$ . While the value of strong correlation is seen between runoff with  $Tc$  concentration time of 0.629. This means at a significance level of 5% or a 95% confidence level, there is a strong relationship between runoff and concentration time ( $Tc$ ). The correlation value is strong enough at flow frequency ( $x_7$ ), relief ( $x_9$ ) and green area (forest, tree, shrub, yard, rice field, field, garden) ( $x_{14}$ ). The low correlation value between runoff and variable flow coefficient  $C(x_{12})$  of 0.319 with significant level and negative correlation of 0.234 for variable circularity ratio  $Rc(x_{13})$ .

### 4.2 Characteristic of Lambidaro sub-Basin

The morphometric characteristics of the Lambidaro watershed are shown in Fig. 3. Land



utilization in the Lambidaro sub-basin is dominated by shrubs, trees, fields and forests ranging from 72%, settlements ranging from 4.74% to potentially changing land use, such as for settlement development. Settlement construction mainly occurs in right Lambidaro (Lambidaro-2) sub-watershed close to the main road / outer shaft of Palembang City (Musidua bridge). As part of left Lambidaro (Lambidaro-1) sub-basin is dominated by bushes and swamps. The sub-watershed of Lambidaro river has varying altitude less than 10 m msl in estuary area up to 36 m in upstream area. The percentage of the slope is

dominated by 0-3% and more than 8% with a maximum height of 36 msl in the upstream area. River conditions are still natural, especially in part of left Lambidaro, while some rivers in part of right Lambidaro sub-basin have been normalized by cliff reinforcement.

With the condition of land use, slope, flow density and soil type, the range of runoff coefficient in Lambidaro sub-basin shows the runoff coefficient value of 0.66. This means that 34% of the total rainfall falls on the Lambidaro river sub-basin can still be infiltrated (see Figure 3).

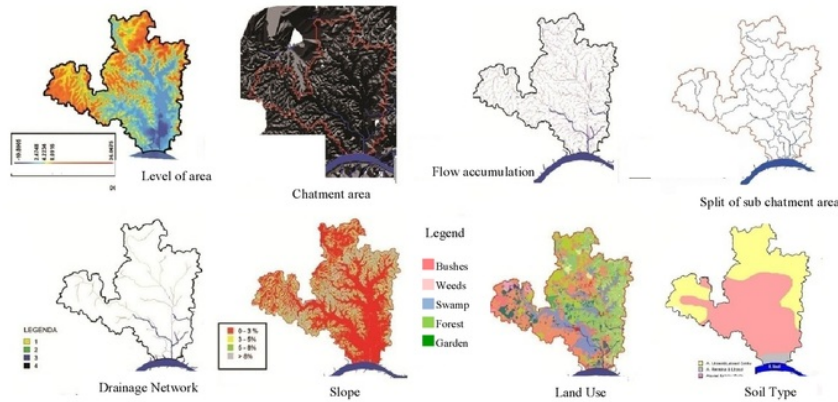


Fig. 3 Characteristic of morfometry Lambidaro sub-basin

### 4.3 Hydrodynamic model of Lambidaro watershed

The simulation of the DufLOW-ArcGIS model was conducted on the Lambidaro watershed. Schematic of the water system based on DEM extraction with flow patterns that resulted in sub-basin and drainage line boundaries to illustrate runoff on the floodwaters was constructed first (Figure 4). The Lambidaro sub-basin network scheme was built by entering the cross-profile data as well as extending the channels per segment based on the measurement results in the field. Channel width ranges from 11 - 18 m. The boundary conditions for the DufLOW model consist of upper boundary conditions such as runoff from upstream Lambidaro watershed and downstream boundary conditions, such as water levels at the mouth of the Lambidaro river. The rainfall hydrology parameter was taken from the analysis of the distribution of maximum daily rainfall by Gumbell method for a 25-year period of 163 mm/day. The weighted C values of each Lambidaro sub-basin were calculated from the results of spatial analysis of land use, slope, soil type and flow density per sub-watershed as shown in Fig.4b. The water level in certain segments of

drainage network of Lambidaro watershed is shown in Figure 4c. The results of the hydrodynamic modeling, the existing conditions of the Lambidaro sub-watershed were approached with a 25-year return period scenario.

The water level on each segment was then transformed into the DEM sub of the Lambidaro sub-basin, and interpolated by the ArcGIS procedure to obtain the inundation distribution that will occur for the 25-year anniversary scenario. The results of the analysis of the distribution of inundation of Lambidaro sub-basin were classified into six classifications, namely: (1) unlogged areas; (2) flooded with altitude less than 0.25 m; (3) altitude 0.25 - 0.5 m; (4) Altitude of 0.5-0.75 m; (5) altitude of 0.75-1 m and (6) heights of more than 1 m. The result of hydrodynamic modeling using DufLOW model was followed by analysis of inundation distribution that will occur with 25 year period return scenario seen as in Figure 4d. The flooded areas of the Lambidaro sub-basin are the areas of flow accumulation and from field observations are low areas with a slope of 0-3% with the type of land use in swamp dominance. The calibration of this model is shown by the high suitability of inundation that occurs in the field with  $R^2 = 0.869$ .

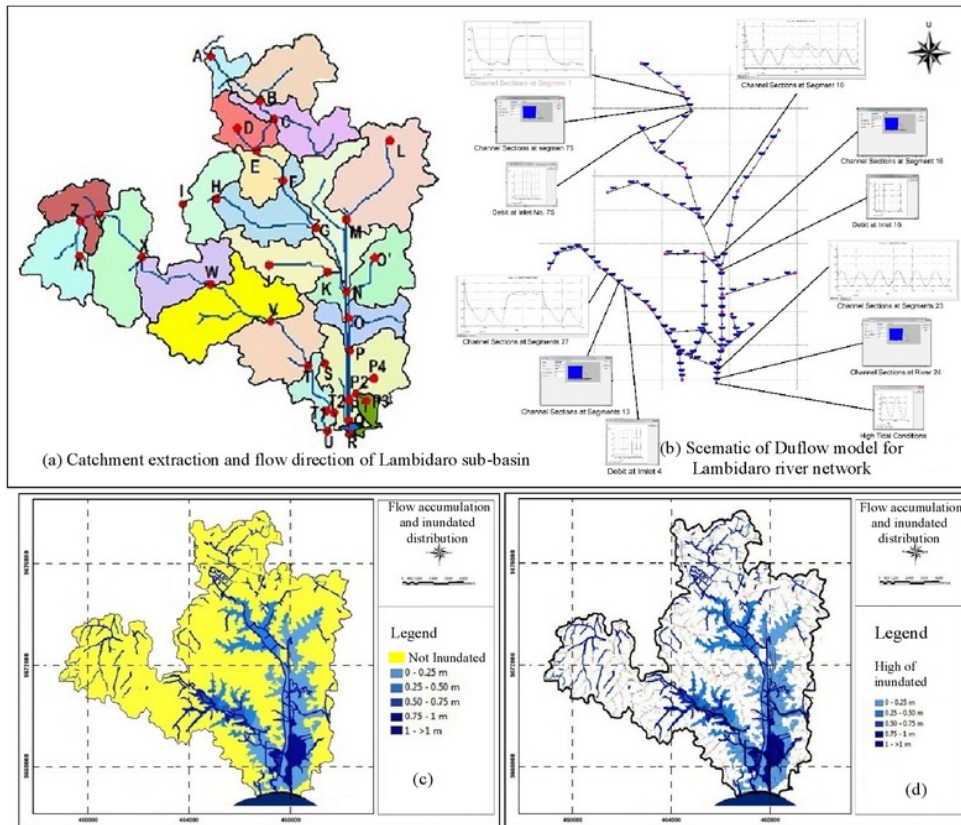


Fig. 4 Drainage network flood simulation of Lambidaro sub-basin: (a) Chatment extraction and flow direction of Lambidaro sub-basin (b) Schematic and drainage network; (c) distribution of inundation due to land use change; (d) the puddle area is assembled with flow accumulation

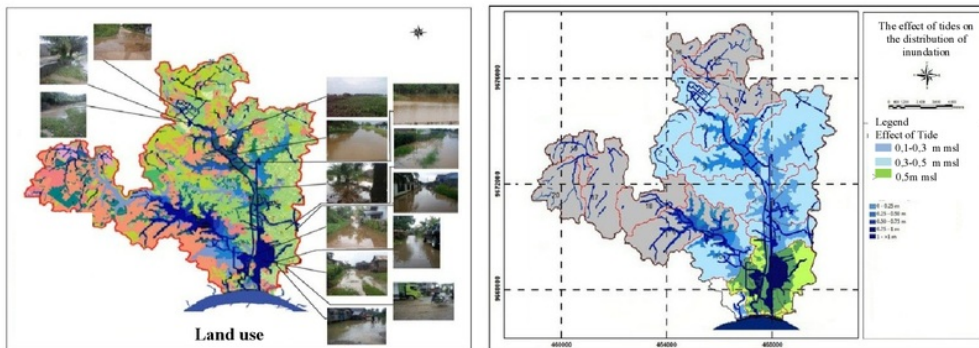


Fig. 5 Distribution of inundation is arranged with Lambidaro sub-waters upstream, middle and downstream

The influence of inundation can be seen in Figure 5, the upper Lambidaro watershed is 756.81 ha, 2821.6 ha, and downstream 513.23 ha. As for the part of left Lambidaro sub-watershed, the upstream area of 1,854.5 ha, middle 380.5 ha and

downstream 131.1 ha.

#### 4.4 Land use change scenarios

Zoning scenario to see the effect of land use change on the inundation distribution that will

occur in Lambidaro sub-basin. Land use change scenario is made as many as 5 scenarios, namely:

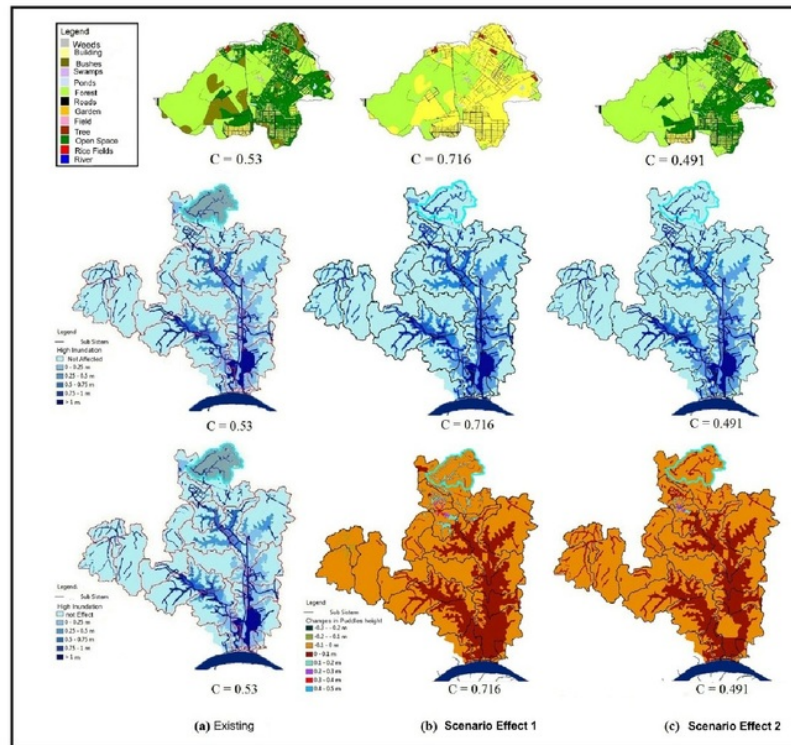


Fig. 6 Effects of land use change of Lambidaro upstream basin

- (1) The first scenario is changing the type of land use area that is still possible to be converted into a green area (urban forest, park) so it can decrease the value of  $C$ .
- (2) The second scenario is changing the type of land utilization of Lambidaro-2 sub-basin of the right section that may still be converted into a settlement (see the current city development) resulting in an increase in the value of  $C$ .
- (3) The third scenario is similar to the first scenario is only done on the part of Lambidaro-1 sub-basin.
- (4) The fourth scenario is the same as the second scenario and is only done on the part of Lambidaro-1 sub-basin.
- (5) The fifth scenario is changing land use with different  $C$  values ranging from 0.2 to 0.9

Some of the effects of land use change scenarios on upstream, mid and downstream sub-watersheds are minimizing and increasing the value of the runoff coefficient  $C$  per sub-watershed were done to reduce and increase the inundation shown in Fig.6.

## 5. CONCLUSION

1. There is a strongly significant relationship between runoff and river length, watershed area, perimeter watershed, average  $R_b$ , flow density, texture ratio, roughness number  $R_n$ .
2. There is a strong relationship between runoff and concentration time ( $T_c$ ).
3. The correlation is strong enough on the Frequency of flow and Relief with the forest area
4. The effect of land-use change with several scenarios made in the Lambidaro sub-basin proves that if land use change is not well controlled, the extent of the inundation will extend from downstream, middle to upstream

## ACKNOWLEDGMENTS

Acknowledgments are submitted to the Directorate of Research and Community Service, Ministry of Research Technology and Higher Education, for the support of Research Grants Higher Education.

## 7. REFERENCE

- [1] B.J.M. Goes, S.E., Howarth, R.B, Wardlaw, I.R, Hancock and U.N. Parajuli, Integrated water resources management in an insecure river basin: a case study of Helmand River Basin, Afghanistan., International Journal of water resources Development, Vol. 32, Issue 1,2014
- [2] Rosmalinda Permatasari, Dantje Kardana Natakusumah, Arwin Sabar, Determining Peak Discharge Factor Using Synthetic Unit Hydrograph Modelling (Case Study : Upper Komering South Sumatera, Indonesia), International Journal of Geomate, Vol. 13, Issue 36, 2017, pp.1-5
- [3] Seemanta S. Bhagabati, Akiyuki Kawasaki, Consideration of the rainfall-run-off-inundation (RRI) Model for flood mapping in a deltaic area of Myanmar, Hydrological Research Letter, 2017
- [4] Province of South Sumatera, *Revised Regional Spatial Plan of South Sumatera Province Year 2016-2036*, 2016, ppIII 1-6
- [5] Dinar DA Putranto, Sarino, Yuono, AL., Flood modeling for mitigation and management of drainage system of Palembang city”, Research report, LPPM-UNSRI, 2008, 1-6
- [6] Bana E, Costa CA, Da Silva PA, Nunes Correia F., *Multicriteria Evaluation of Flood Control Measures: The Case of Ribeirado Livramento. Water Resource Manag.* 2004,18 (21): 263–283
- [7] Majid Mirzael, Application of a rainfall-runoff model for regional-scale flood inundation mapping for the Langat River Basin, International Journal of GEOMATE, 2017
- [8] Hamim SA, F Sjarkowi, Dinar DA Putranto, Totok G, *Model control of river sub-system environment in management of drainage system of Palembang City*, Disertation, Doctor of Environmental science, post graduate program University of Sriwijaya, 2013, p 4-16
- [9] Government Regulation no. 26, The National Spatial Plan, The secretariat of the Republic of Indonesia, 2008
- [10]Puspics-UGM “Preparation of Integrated Musi River Basin Management Plan”, Musi River Basin Management Area, Research Report,2013, 77-80
- [11]Dinar DA Putranto, Sarino, and Yuono AL, “Digital field model for rainfall-runoff modeling of sedimentation analysis regionally in the Musi basin”, Research report, University of Sriwijaya, 2015
- [12]Province of South Sumatera, *Revised Regional Spatial Plan of South Sumatera Province Year 2016-2036*, Report Planning, 2016, pIII 1-6

---

Copyright © Int. J. of GEOMATE. All rights reserved, including the making of copies unless permission is obtained from the copyright proprietors.

---

---

ORIGINALITY REPORT

---

**2%**

SIMILARITY INDEX

%

INTERNET SOURCES

**2%**

PUBLICATIONS

**0%**

STUDENT PAPERS

---

PRIMARY SOURCES

---

**1**

Hala Elkady, Ahmed Hassan. "Assessment of High Thermal Effects on Carbon Nanotube (Cnt)- Reinforced Concrete", Scientific Reports, 2018

Publication

**2%**

---

Exclude quotes On

Exclude matches < 15 words

Exclude bibliography On