

Science & Technology Indonesia



*Volume 3 Number 3
July 2018*

Editorial Team

Editor-in-Chief

Aldes Lesbani, Prof. Ph. D., Universitas Sriwijaya, **INDONESIA** (Scopus ID = 15056199800)
(<https://www.scopus.com/authid/detail.uri?authorId=15056199800>)

Vice Editor-in-Chief

Hendrik Oktendy Lintang, Dr., Indonesian Chemical Society, **INDONESIA** (Scopus ID = 36496933500)
(<https://www.scopus.com/authid/detail.uri?authorId=36496933500>)

Managing Editors

Mohammad Basyuni, Dr., Universitas Sumatera Utara, **INDONESIA** (Scopus ID = 15055287200)
(<https://www.scopus.com/authid/detail.uri?authorId=15055287200>)

Risfidian Mohadi, Dr.rer. nat., Universitas Sriwijaya, **INDONESIA** (Scopus ID = 55991505100)
(<https://www.scopus.com/authid/detail.uri?authorId=55991505100>)

Tarmizi Taher, Dr., Universitas Sriwijaya, **INDONESIA** (Scopus ID = 56104271500)
(<https://www.scopus.com/authid/detail.uri?authorId=56104271500>)

Editorial Boards

Ambara Rachmat Pradipta, Dr., Tokyo Institute of Technology, **JAPAN** (Scopus ID = 36185578800)
(<https://www.scopus.com/authid/detail.uri?authorId=36185578800>)

Dodi Devianto, Dr., Universitas Andalas, **INDONESIA** (Scopus ID = 56747957200)
(<https://www.scopus.com/authid/detail.uri?authorId=56747957200>)

Fabien Silly, Dr., CEA Saclay, **FRANCE** (Scopus ID = 6602946333)
(<https://www.scopus.com/authid/detail.uri?authorId=6602946333>)

Fitri Maya Puspita, Dr., Universitas Sriwijaya, **INDONESIA** (Scopus ID = 55761767800)
(<https://www.scopus.com/authid/detail.uri?authorId=55761767800>)

Iskhaq Iskandar, Prof. Dr., Universitas Sriwijaya, **INDONESIA** (Scopus ID = 8637688700)
(<https://www.scopus.com/authid/detail.uri?authorId=8637688700>)

Faheem K. Butt, Dr., University of Education, **PAKISTAN** (Scopus ID = 37076592700)
(<https://www.scopus.com/authid/detail.uri?authorId=37076592700>)

Ivandini T. Anggraningrum, Prof. Dr., Universitas Indonesia, **INDONESIA** (Scopus ID = 6506022840)
(<https://www.scopus.com/authid/detail.uri?authorId=6506022840>)

Roland Tomašiūnas, Prof. Dr., Vilnius University, **LITHUANIA** (Scopus ID = 6603738091)
(<https://www.scopus.com/authid/detail.uri?authorId=6603738091>)

Khairul Basar, Dr., Institut Teknologi Bandung, **INDONESIA** (Scopus ID = 8913123600)
(<https://www.scopus.com/authid/detail.uri?authorId=8913123600>)

Lusi Safriani, Dr., Universitas Padjadjaran, **INDONESIA** (Scopus ID = 14919712300)
(<https://www.scopus.com/authid/detail.uri?authorId=14919712300>)

Oki Murazza, Assoc. Prof. Dr., King Fahd University of Petroleum and Minerals, **SAUDI ARABIA** (Scopus ID = 22433275900) (<https://www.scopus.com/authid/detail.uri?authorId=22433275900>)

Rino R. Mukti, Dr., Institut Teknologi Bandung, **INDONESIA** (Scopus ID = 12244105600)
(<https://www.scopus.com/authid/detail.uri?authorId=12244105600>)

Siew Ling Lee, Assoc. Prof. Dr., Universiti Teknologi Malaysia, **MALAYSIA** (Scopus ID = 57193482292)
(<https://www.scopus.com/authid/detail.uri?authorId=57193482292>)

Tri Atmojo Kusmayadi, Prof. Dr., Universitas Sebelas Maret, **INDONESIA** (Scopus ID = 55151149300)
(<https://www.scopus.com/authid/detail.uri?authorId=55151149300>)

Wamiliana, Prof. Dr., Universitas Lampung, **INDONESIA** (Scopus ID = 36053853700)
(<https://www.scopus.com/authid/detail.uri?authorId=36053853700>)

Technical Editor and Layout

M. Lutfi Firdaus, Dr., Universitas Bengkulu, **INDONESIA** (Scopus ID = 56426642700)
(<https://www.scopus.com/authid/detail.uri?authorId=56426642700>)

M. Yusup Nur Khakim, Dr., Universitas Sriwijaya, **INDONESIA** (Scopus ID = 55466639800)
(<https://www.scopus.com/authid/detail.uri?authorId=55466639800>)

Ananda Putra, Dr., Universitas Negeri Padang, **INDONESIA** (Scopus ID = 14919803200)
(<https://www.scopus.com/authid/detail.uri?authorId=14919803200>)

James Sibarani, Dr. Universitas Udayana, **INDONESIA** (Scopus ID = 12803942600)
(<https://www.scopus.com/authid/detail.uri?authorId=12803942600>)

Rahmat Hidayat, Dr. Institut Pertanian Bogor, **INDONESIA** (Scopus ID = 7003420834)
(<https://www.scopus.com/authid/detail.uri?authorId=7003420834>)

Neza Rahayu Palapa, M.Sc., **INDONESIA** (Scopus ID = 57204586233)
(<https://www.scopus.com/authid/detail.uri?authorId=57204586233>)

Last Updated: January 16, 2020

Science and Technology Indonesia

Home (<http://sciencetechindonesia.com/index.php/jsti/index>) / About the Journal

About the Journal

Science & Technology Indonesia is an international scholarly journal in the field of science and technology aimed to publish a high-quality scientific paper including original research papers, reviews, short communication, and technical notes. This journal welcomes the submission of articles that cover a typical subject of natural science and technology such as **Chemistry, Pharmacy, Physic/Applied Physic, and Mathematics**.

Since January 2019 (Vol. 4 No.1), article related with **Biology and Environment** will be published by **Indonesian Journal of Environmental Management and Sustainability (IJoEMS)** (<http://ijoems.com/index.php/ijems>), which is the sister of Science and Technology Indonesia.

Last Updated: December 2, 2019

Science and Technology Indonesia

p-ISSN 2580-4405 e-ISSN 2580-4391

© 2017 Science and Technology Indonesia

JOURNAL POLICY

Aim and Scope (<http://sciencetechindonesia.com/index.php/jsti/aimandscope>)

Publication Ethics (<http://sciencetechindonesia.com/index.php/jsti/ethics>)

Abstracting and Indexing (<http://sciencetechindonesia.com/index.php/jsti/indexing>)

Copyright Notice (<http://sciencetechindonesia.com/index.php/jsti/copyright>)

Announcements (<http://sciencetechindonesia.com/index.php/jsti/announce>)

Plagiarism Policy (<http://sciencetechindonesia.com/index.php/jsti/plagiarism>)

Conference Collaboration (<http://sciencetechindonesia.com/index.php/jsti/conf>)

SUBMISSION PROCESS

Editorial Board (<http://sciencetechindonesia.com/index.php/jsti/about/editorialTeam>)

Author Guideline (<http://sciencetechindonesia.com/index.php/jsti/gia>)

Home (<http://sciencetechindonesia.com/index.php/jsti/index>)

/ Archives (<http://sciencetechindonesia.com/index.php/jsti/issue/archive>) / Vol 3 No 3 (2018): July



[www.sciencetechindonesia.com](http://sciencetechindonesia.com)

(<http://sciencetechindonesia.com/index.php/jsti/issue/view/8>)

Published: 2018-07-27


Articles

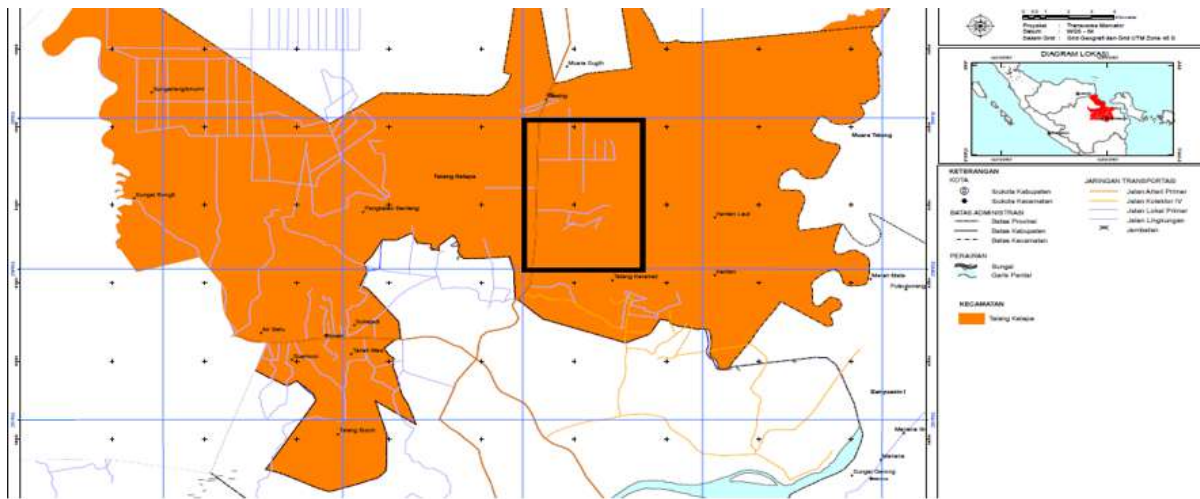
Diversity of the Aquatic Vegetation in the Irrigation Canals of Mulya Sari village, Banyu Asin Regency, South Sumatra

(<http://sciencetechindonesia.com/index.php/jsti/article/view/92>)

 Wiwik Septiani, Siti Masreah Bernas, Yuanita Windusari

 Page 114-118

 DOI: <https://doi.org/10.26554/sti.2018.3.3.114-118> (<https://doi.org/10.26554/sti.2018.3.3.114-118>)



(<http://sciencetechindonesia.com/index.php/jsti/article/view/92>)

👁 Abstract 993 times 📄 PDF 233 times

FULL TEXT PDF (<http://sciencetechindonesia.com/index.php/jsti/article/view/92/74>)

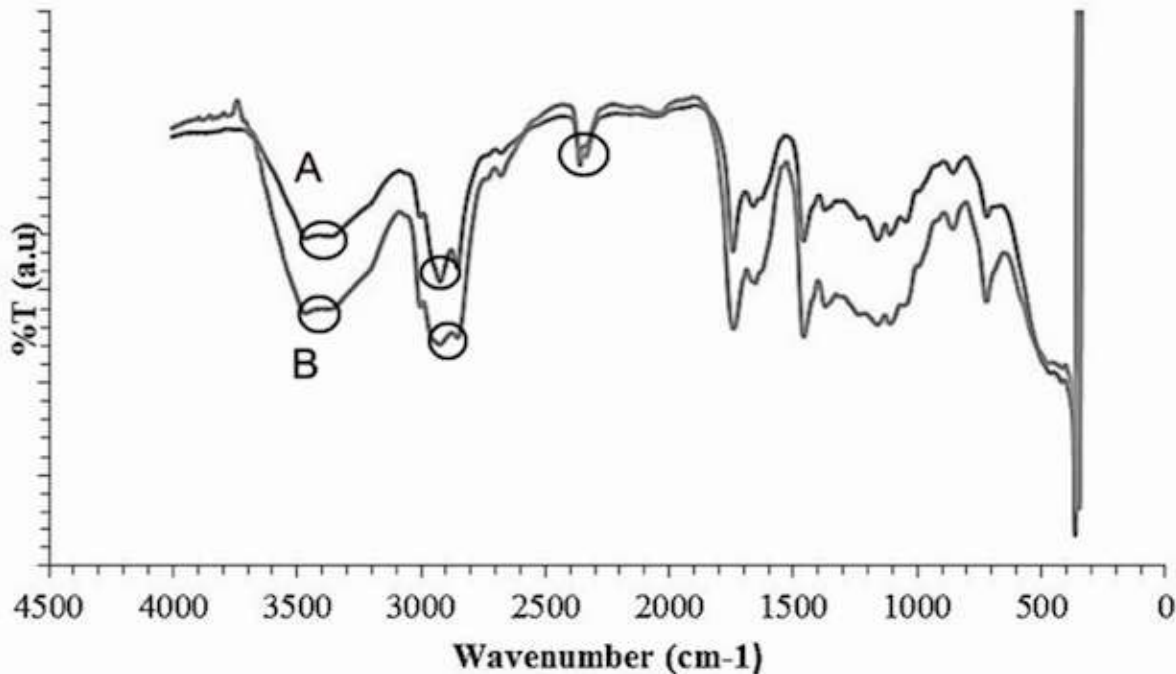
Synthesis of Alkyd Resin Modified with Waste Palm Cooking Oil as Precursor Using Pretreatment with Zeolite Adsorbent

(<http://sciencetechindonesia.com/index.php/jsti/article/view/96>)

👤 Fitrilia Silvianti, Wijayanti Wijayanti, Wisnu A.A. Sudjarwo, Wikan Berliana Dewi

📄 Page 119-122

🔗 DOI: <https://doi.org/10.26554/sti.2018.3.3.119-122> (<https://doi.org/10.26554/sti.2018.3.3.119-122>)



(<http://sciencetechindonesia.com/index.php/jsti/article/view/96>)

👁 Abstract 393 times 📄 PDF 295 times

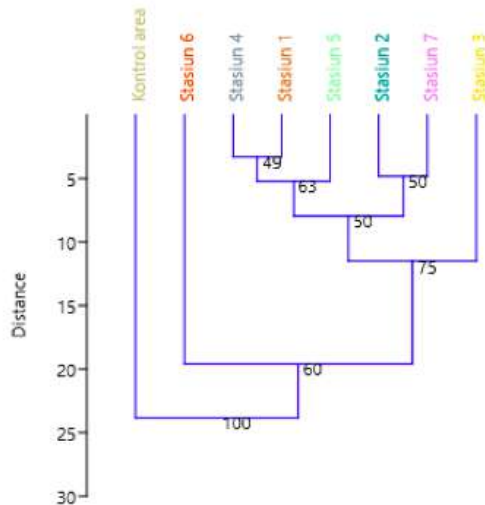
FULL TEXT PDF (<http://sciencetechindonesia.com/index.php/jsti/article/view/96/75>)

Accumulation of Some Heavy Metals in *Flavoparmelia caperata* and *Usnea dasypoga* As Air Quality Bioindicator in Palembang City (<http://sciencetechindonesia.com/index.php/jsti/article/view/102>)

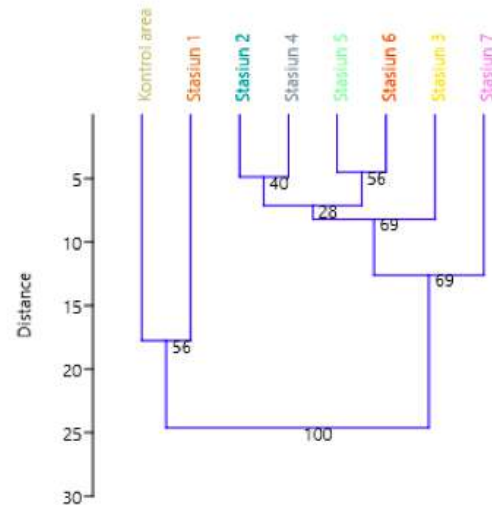
👤 Mirawati Mirawati, Arinafril Arinafril, M. Fasisal

📄 Page 123-129

🔗 DOI: <https://doi.org/10.26554/sti.2018.3.3.123-129> (<https://doi.org/10.26554/sti.2018.3.3.123-129>)



Flavoparmelia caperata



Usnea filipendula

(<http://sciencetechindonesia.com/index.php/jsti/article/view/102>)

👁️ Abstract 314 times 📄 PDF 212 times

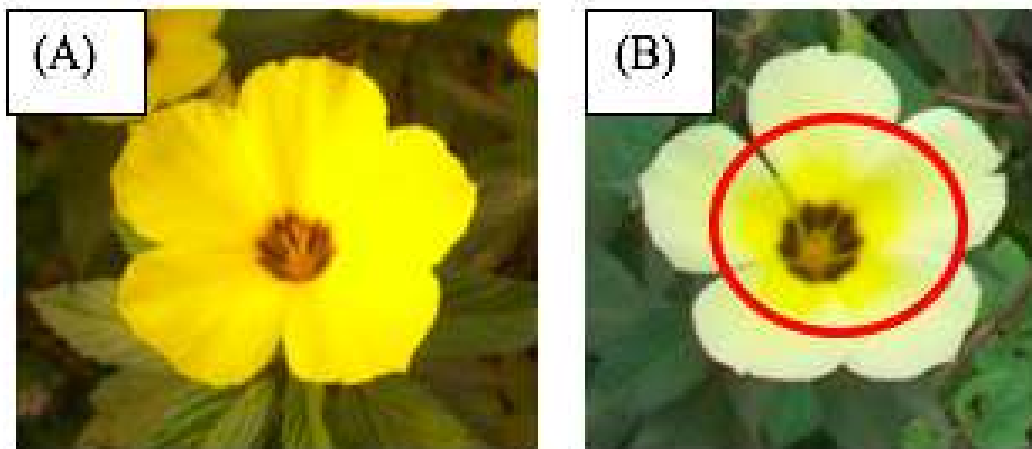
FULL TEXT PDF (<http://sciencetechindonesia.com/index.php/jsti/article/view/102/76>)

Diversity of Phytophagous and Entomophagous Insect on Yellow Alder Flower (*Turnera subulata* J.E SM and *Turnera ulmifolia* L.) Around the Palm Oil (*Elaeis guineensis* J.) Plantations (<http://sciencetechindonesia.com/index.php/jsti/article/view/112>)

👤 Ryan Hidayat, Chandra Irsan, Arum Setiawan

📄 Page 130-133

🔗 DOI: <https://doi.org/10.26554/sti.2018.3.3.130-133> (<https://doi.org/10.26554/sti.2018.3.3.130-133>)



(<http://sciencetechindonesia.com/index.php/jsti/article/view/112>)

👁 Abstract 916 times 📄 PDF 251 times

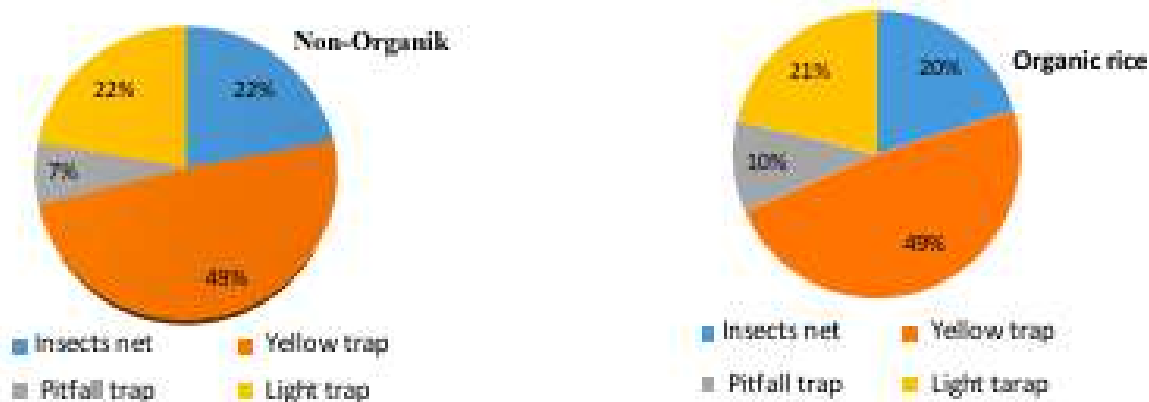
FULL TEXT PDF (<http://sciencetechindonesia.com/index.php/jsti/article/view/112/77>)

Variety of Pests and Arthropods in Organic and Non-organic Rice Cultivation in South Sumatera (<http://sciencetechindonesia.com/index.php/jsti/article/view/113>)

👤 Ardi Asroh, Abu Umayah, Yulia Pujiastuti

📄 Page 134-140

🔗 DOI: <https://doi.org/10.26554/sti.2018.3.3.134-140> (<https://doi.org/10.26554/sti.2018.3.3.134-140>)



(<http://sciencetechindonesia.com/index.php/jsti/article/view/113>)

👁 Abstract 402 times 📄 PDF 281 times

FULL TEXT PDF (<http://sciencetechindonesia.com/index.php/jsti/article/view/113/78>)

Index

SERTIFIKAT

Direktorat Jenderal Penguatan Riset dan Pengembangan,
Kementerian Riset, Teknologi, dan Pendidikan Tinggi



Kutipan dari Keputusan Direktur Jenderal Penguatan Riset dan Pengembangan,
Kementerian Riset, Teknologi, dan Pendidikan Tinggi Republik Indonesia
Nomor: 21/E/KPT/2018, Tanggal 9 Juli 2018
Tentang Hasil Akreditasi Jurnal Ilmiah Periode I Tahun 2018

Nama Jurnal Ilmiah
Science and Technology Indonesia
E-ISSN: 2580-4391
Penerbit: Jurusan Kimia FMIPA Universitas Sriwijaya

Ditetapkan sebagai Jurnal Ilmiah

TERAKREDITASI PERINGKAT 3

Akreditasi berlaku selama 5 (lima) tahun, yaitu
Volume 1 Nomor 1 Tahun 2016 sampai Volume 5 Nomor 4 Tahun 2020

Jakarta, 9 Juli 2018
Direktur Jenderal Penguatan Riset dan Pengembangan



Dr. Muhammad Dimiyati
NIP. 195912171984021001



Diversity of Phytophagous and Entomophagous Insect on Yellow Alder Flower (*Turnera subulata* J.E SM and *Turnera ulmifolia* L.) Around The Palm Oil (*Elaeis guineensis* J.) Plantations

Ryan Hidayat^{1*}, Chandra Irsan², Arum Setiawan³

¹Environmental Management Department, Graduate School of Sriwijaya University, Jl. Padang Selasa No. 524 Bukit Besar Palembang Sumatera Selatan 30139, Indonesia

²Department of Agriculture, Universitas Sriwijaya, Inderalaya, Jl. Palembang - Prabumulih KM.32 Kabupaten Ogan Ilir, Sumatera Selatan, Indonesia

³Department of Biology, Universitas Sriwijaya, Inderalaya, Jl. Palembang - Prabumulih KM.32 Kabupaten Ogan Ilir, Sumatera Selatan, Indonesia

*Corresponding author: ryan.hidayat991@gmail.com

Abstract

Yellow alder flower, with Indonesian name bunga pukul delapan, can influence the existence of phytophagous and entomophagous insect around any crops. The existence of these phytophagous and entomophagous insects would affect the diversity of predator and parasitoid insect species that come to these crops. This research was aimed to study the role of yellow alder flower in their influence of the presence of predatory and parasitoid insect that active in the *Turnera subulata* dan *Turnera ulmifolia*. The research was conducted at July to August 2017 in palm oil plantation of PT. Tania Selatan branch Burnai Timur 1. The results showed that phytophagous insect found in the yellow alder flower belonging to 6 orders and 25 families. Meanwhile for the entomophagous insect, it was belonging to the 7 orders and 15 families. The diversity index in *Turnera subulate* and *Turnera ulmifolia* was in range of 0.063 and 2.912 or higher than 2. The dominant index was low (in range of 0.091 to 0.125) and the evenness index was high enough in range 0.738 - 0.752.

Keywords

Entomophagous and Phytophagous Insects, Community Structure, Diversity Index

Received: 28 April 2018, Accepted: 12 July 2018

<https://doi.org/10.26554/sti.2018.3.3.130-133>

1. INTRODUCTION

The oil palm sector in Indonesia substantially contributes to the foreign exchange, compared to other oil and oil producing plants (Nasution et al., 2014). The existing palm oil plant in South Sumatera has an area of 866,763 hectares, with total production of fresh fruit bunches (FFB) of about 2.11 million tons per year. Total revenue from sales of fresh fruit bunches (FFB) reached Rp 4,923,213 per hectare, per year or about 4,923 trillion rupiah per year (Asmani, 2014).

In the plantation area of oil palm, there are various types of insect pests and controlled using synthetic insecticides because it is easy and fast. A synthetic insecticide in addition to killing pests, is also known to kill natural enemies from pests. How to control pests without using synthetic insecticides can be done through the management of agro-ecosystems that increase biodiversity to create a balance between pests and natural enemies. According to Rahayu and Sulistyowaty (2014), the planting of cover crops such as *T. ulmifolia* in oil palm plantations is reported to increase entomophagous group insects (Predators and parasitoids) and reduce the population of caterpillar pests.

An increase in the parasitoid population in oil palm plantations can be done through conservation. Conservation can be done by providing feed and habitat for the parasitoid imago. Plants containing pollen can be utilized as feed providers and habitat of natural enemy populations (parasitoids and predators). Pollen can be used as a source of food, shelter, and breeding, before the main host or prey is present in the planting area (Tyas et al., 2016).

T. subulata and *T. ulmifolia* plants can be utilized as part of conservation or preservation of predator and parasitoid life (Kurniawati and Martono, 2015). According to Steenis (2006) the *T. subulata* plant is a yellow alder flower that has a yellow color on the flower, and *T. ulmifolia* plant is a yellow alder flower which has a white color on the flower. *T. subulata* and *T. ulmifolia* are plants that contain pollen and nectar. Pollen and nectar can be utilized as feed and habitat providers for predator and parasitoid populations. (Tyas et al., 2016).

Data and information on insects that come to yellow alder flower *T. subulata* and *T. ulmifolia* in oil palm plantations are still inadequate. Therefore, this study was conducted to investigate

Table 1. Number of orders, families and species of phytophagous and entomophagous insects found in the yellow alder flower in the bloom and wilting phase

Yellow alder flower phase	Orde		Family		Species	
	<i>Turnera subulata</i>	<i>Turnera ulmifolia</i>	<i>Turnera subulata</i>	<i>Turnera ulmifolia</i>	<i>Turnera subulata</i>	<i>Turnera ulmifolia</i>
Bloom	7	7	30	13	220	47
Wilting	8	6	20	10	108	48

the role of the yellow alder flower (*T. subulata* and *T. ulmifolia*) as living habitats of entomophagous and phytophagous insects in enhancing the biodiversity around palm trees (*Elaeis guineensis* J.) at PT. Tania Selatan East Burnai Branch.

2. EXPERIMENTAL SECTION

This research was conducted in oil palm plantations PT. South Tania and Integrated Research Laboratory of Sriwijaya University from July to August 2017. The research was conducted using purposive sampling method, and the research location was divided into 2 regions. Area A near the river waters there are 3 *T. subulata*, and 3 *T. ulmifolia*, and area B away from river water there are 3 *T. subulata*, and 3 *T. ulmifolia*.

Collection of phytophagous and entomophagous insects in each yellow alder flower was conducted using visual observation, plastic bag trap, sweep net (insect net), killing jar (killer tube), and d-vacuum (insect vacuum). Each trap is laid in the morning, afternoon, afternoon and observed. Taking phytophagous and entomophagous insects from the trap device was performed 12 times for 6 weeks. The identification of phytophagous and entomophagous insects is performed on the basis of morphological features. The identification books used include (Kalshoven, 1981; Anderson, 1998; Zahradink et al., 1991).

Abiotic temperature and humidity factor data were collected at yellow alder flower using TH60 hybrid thermo hygrometer, and light intensity using LX 100 light meter. Each measurement was done in the morning, noon and afternoon then observed and calculated using Pearson non-parametrical correlation to know the effect of factor abiotic to the existence

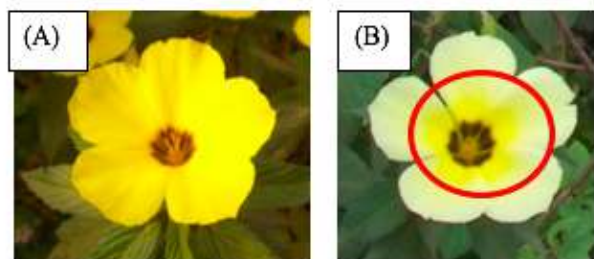


Figure 1. Yellow alder flower (A) *Turnera subulata* (B) *Turnera ulmifolia*

and number of insects in the yellow alder flower.

The data of phytophagous and entomophagous insects obtained are shown in tabular form. The data obtained is used to determine the number of insects phytophagous and entomophagous. The data obtained were used to find out the index of diversity of phytophagous and entomophagous insects at yellow alder flower. The data obtained were used to find out the non-parametric correlation between the abiotic factors of temperature, humidity and light intensity on the number of insects at the yellow alder flower.

The species diversity index (Shannon Index) (Magurran, 1998), is calculated by the formula:

$$H' = -\sum P_i \ln P_i \tag{1}$$

Where H' is species diversity index, pi equals to ni/N , ni is number of species individual, and N is the number of all the individual.

The criteria for the index value of species diversity based on shannon-wiener are as follows: species diversity is categorized as low if $H' > 1$, medium if $H' = 1-3$ and high if $H' > 3$. (Fachrul, 2007).

The species dominance index is calculated by the Simpson formula (Indriyanto 2010):

$$D = \sum \left(\frac{ni}{N}\right)^2 \tag{2}$$

Where D is species domination, ni is the number of i individuals, and N is the total number of individual.

The criteria of dominance index value ranges from 0.5, the lower the lower the index value of dominance the better, because there is no dominant species or community structure in a stable state.

The species dominance index is calculated by the formula Fachrul (2007):

$$e = \frac{H'}{H_{max}} \tag{3}$$

Where e is evenness index, H' is species diversity H_{max} is maximum diversity (ln S) and S is the number of species.

Criteria value of fairness index is around 0,5. Evenness of the species is low if $E < 0.5$, and high if $E > 0.5$ or evenness between species is relatively uniform or the number of individuals of each species is equal.

3. RESULTS AND DISCUSSION

The results of this study indicate that flower plants at yellow alder flower planted around palm trees can affect the presence of insects phytophagous and entomophagous. The results showed that the phytophagous insects found in yellow alder flower were classified into 6 orders, and 25 families and entomophagous insects on yellow alder flower were classified into 7 orders, and 15 families. The number of species of insects phytophagous and entomophagous found in yellow alder flower influenced by bloom and wilt yellow alder flower. Species of insects in the blossom phase of the flower of yellow alder flower more found than the wilting phase of the yellow alder flower (Table 1).

In Table 1 it can be seen that phytophagous and entomophagous insects are found in more yellow *T. subulata* plants than white *T. ulmifolia*. The number of species of insects phytophagous and entomophagous is influenced by the yellow color on the flowers of plants *T. subulata* and *T. ulmifolia*. The yellow color of the flowering of the *T. subulata* is more than in the *T. ulmifolia* flower (Fig. 1 A & B). It is suspected that the interest of the insects in *T. subulata* is influenced by the dominant yellow flower, and the interest of the insects on *T. ulmifolia* is influenced by the yellow color found in the center of the flower. Judge et al., (2016) study of yellow color can attract populations of phytophagous insects of 23.25 populations followed by a green color of 7.50 populations, and a red color of 6.00 populations. The Sunarno (2011) yellow study can attract many types of phytophagous insects compared to red and green.

In Table 1 it can be seen that the insect phytophagous found in the yellow alder flower in the bloom phase of the flower parts of the plant and the wilting phase of the flower part of the plant. The results showed that the phytophagous insects found in the yellow alder flower phases wilted were affected by the leaf glands (Figure 2 A & B). According to Steenis (2006) Leaf glands in yellow alder flower have a round shape and are located under the leaves of flowers. The leaf of yellow alder flower gland may affect the presence of a phytophagous insect such as *Comfonotus* sp. to eat. According to the research conducted by Erniawati and Kahono (2009), leaf glands in flowering plants can produce honey dew that has nectar content that can be used as insect food.

3.1 index of diversity, dominance and evenness

The results showed that the phytophagous and entomophagous insects had a relatively different index of diversity, dominance and evenness in the yellow alder flower (Table 2).

The dominant index of the species (D) < 0.5 indicates that no species dominate other species or community structures in a stable state. The evenness index of the species (E) > 0.5

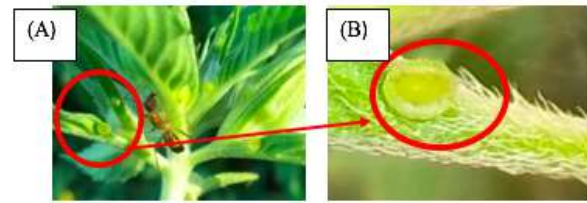


Figure 2. An ant insect on a yellow alder flower (A) *Comfonotus* sp (B) Leaf glands

Table 2. Index of diversity, dominance and evenness of phytophagous and entomophagous insects present at yellow alder flower

Community characteristic	Treatment	
	<i>Turnera subulata</i>	<i>Turnera ulmifolia</i>
Number of individual (Σ)	372	223
Diversity index (H')	2.912	2.603
Domination index (D)	0.091	0.125
Evenness index (E)	0.752	0.738

Description: The species diversity index of $H' > 2$ indicates that species diversity is abundant or moderate (Fachrul, 2007).

indicates that evenness between species is relatively uniform or the number of individuals of each species is equal.

The results showed that the index of species diversity, the dominance index, and the evenness index of the phytophagous and entomophagous insects were planted at yellow alder flower in the good category (Table 2). It can be seen from the index value of diversity that is above 2, the dominance index is close to 0.1 and the evenness index is above 0.7. These figures suggest that the diversity of species of phytophagous and entomophagous insects at yellow alder flower is quite high, no species are predominant and the fairness of individuals or species is high enough. The relatively low index of species dominance shows that no species dominate the community, and also the high-evenness index provides information that the species in the community are spreading flat.

3.2 Pearson correlation coefficient

The results showed that abiotic factors of temperature, humidity and light intensity there are positive (correlated) and there is a negative (not correlated). In each region and plant seen that the temperature does not affect the number of insects found. Moisture and light intensity can affect the number of insects found (Table 3).

The results showed that the number of phytophagous and entomophagous insects at yellow alder flower can be influenced by species and areas near and far from the water. In (Table 3) it can be seen that the humidity of the environment in *T. subulata* near the waters has a significance value of $0.01 < 0.05$. It shows

Table 3. Significance values Pearson correlation between abiotic factors (temperature, humidity and light intensity) with total individual phytophagous and entomophagous insects on yellow alder flower

Research Location	Abiotic factor		
	Temperature	Humidity	Light intensity
Area A (Near water area)			
<i>Turnera subulata</i>	-0.88	0.01	0.34
<i>Turnera ulmifolia</i>	-0.19	-0.27	0.56
Area B (Far from water area)			
<i>Turnera subulata</i>	-0.28	-0.02	-0.04
<i>Turnera ulmifolia</i>	-0.63	-0.34	0.29

Description: if the value of significance < 0.05, then correlated, If the significance value > 0.05, then not correlated

there is a correlation between abiotic factors of humidity to the number of insects. Environmental humidity in *T. subulata* area far from water has significance value $-0.34 > 0,05$. It shows that there is no correlation between abiotic factors of humidity to the number of insects.

4. CONCLUSIONS

T. subulata and *T. ulmifolia* plant species planted around oil palm trees have relatively different effects in inviting the presence of species of phytophagous and entomophagous insects. *Turnera subulata* plants can attract 6 phylogenetic insects, 25 families and 220 heads, and *Turnera ulmifolia* plants can attract 7 phytophagous insects, 15 families and 108 heads. *T. subulata* can attract twice as many phytophagous and entomophagous insects than *T. ulmifolia*. *T. subulata* and *T. ulmifolia* plants can maintain the phytophagous and entomophagous insect communities in oil palm cultivation. It can be seen through high diversity index. It can be seen through high species diversity index (2,603-2,912), low dominance index (0,091-0,125), and high evenness index (0,738-0,752). Abiotic factors of humidity play an important role in influencing the presence of insects with correlation coefficient value of 0.01 in *T. subulata* area near river waters.

REFERENCES

Anderson, B. P. (1998). *The Insects Of Australia*. Melbourne University Press, Australia
 Asmani, N. (2014). Kelapa Sawit Komoditas Unggulan Sumatera Selatan Yang Ramah Lingkungan. In *Seminar GAPKI Sumatera selatan* : 6

Erniawati and S. Kahono (2009). Peranan Tumbuhan Liar Dalam Konservasi Serangga Penyerbuk Ordo Hymenoptera. *J. Teknik Lingkungan*, **10**(2); 195–203
 Fachrul, M. F. (2007). *Metode Saampling Bioekologi*. Bumi aksara, Jakarta
 Kalshoven, L. (1981). *Pest of Crops In Indonesia. Revised and translated by P.A. van der Laan*. PT Ichtiar Baru-Van Hoeve
 Kurniawati, N. and E. Martono (2015). Peran Tumbuhan Berbunga sebagai Media Konservasi Artropoda Musuh Alami The Role of Flowering Plants in Conserving Arthropod Natural Enemies. *Perlindungan Tanaman Indonesia*, **19**(2); 53–59
 Magurran, A. E. (1998). *Ecological Diversity and Its Measurment*. Princeton University Press
 Nasution, S. H., C. Hanum, and J. Ginting (2014). Per-tumbuhan Bibit Kelapa Sawit (*Elaeis guineensis* Jacq.) Pada Berbagai Perbandingan Media Tanam Solid Decanter Dan Tandan Kosong Kelapa Sawit Pada Sistem Single Stage. *Online Agroekoteknologi*, **2**(2); 691–701
 Steenis, V. (2006). *Flora*. Pradya Paramitha
 Tyas, I. L. M., A. P. P. Sari, M. Saefi, and W. C. Adi (2016). Distribusi Temporal Arthropoda Pada Tumbuhan Liar Krokot (*Portulaca oleracea* L.) Di Lahan Pertanian Tomat Desa. In *Prosiding Seminar Nasional II Tahun 2016, Kerjasama Prodi Pendidikan Biologi Fkip Dengan Pusat Studi Lingkungan Dan Kependudukan (Pslk) Universitas Muhammadiyah Malang*. pages 755–763
 Zahradink, J., F. Severa, M. J, and M. Vana (1991). *The Illustrated Book Of Insect*. Great Britain:310

Diversity of Phytophagous and Entomophagous Insect on Yellow Alder Flower (*Turnera subulata* J.E SM and *Turnera ulmifolia* L.) Around the Palm Oil (*Elaeis guineensis* J.) Plantations

By Arum Setiawan

Diversity of Phytophagous and Entomophagous Insect on Yellow Alder Flower (*Turnera subulata* J.E SM and *Turnera ulmifolia* L.) Around The Palm Oil (*Elaeis guineensis* J.) Plantations

Ryan Hidayat^{1*}, Chandra Irsan², Arum Setiawan³

¹Environmental Management Department, Graduate School of Sriwijaya University, Jl. Padang Selasa No. 524 Bukit Besar Palembang Sumatera Selatan 30139, Indonesia

²Department of Agriculture, Universitas Sriwijaya, Inderalaya, Jl. Palembang - Prabumulih KM.32 Kabupaten Ogan Ilir, Sumatera Selatan, Indonesia

³Department of Biology, Universitas Sriwijaya, Inderalaya, Jl. Palembang - Prabumulih KM.32 Kabupaten Ogan Ilir, Sumatera Selatan, Indonesia

*Corresponding author: ryan.hidayat991@gmail.com

Abstract

Yellow alder flower, with Indonesian name bunga pukul delapan, can influence the existence of phytophagous and entomophagous insect around any crops. The existence of these phytophagous and entomophagous insects would affect the diversity of predator and parasitoid insect species that come to these crops. This research was aimed to study the role of yellow alder flower in their influence of the presence of predatory and parasitoid insect that active in the *Turnera subulata* dan *Turnera ulmifolia*. The research was conducted at July to August 2017 in palm oil plantation of PT. Tania Selatan branch Burnai Timur 1. The results showed that phytophagous insect found in the yellow alder flower belonging to 6 orders and 25 families. Meanwhile for the entomophagous insect, it was belonging to the 7 orders and 15 families. The diversity index in *Turnera subulate* and *Turnera ulmifolia* was in range of 0.063 and 2.912 or higher than 2. The dominant index was low (in range of 0.091 to 0.125) and the evenness index was high enough in range 0.738 – 0.752.

Keywords

Entomophagous and Phytophagous Insects, Community Structure, Diversity Index

Received: 28 April 2018, Accepted: 12 July 2018

<https://doi.org/10.26554/sti.2018.3.3.130-133>

1. INTRODUCTION

The oil palm sector in Indonesia substantially contributes to the foreign exchange, compared to other oil and oil producing plants (Nasution et al., 2014). The existing palm oil plant in South Sumatera has an area of 866,763 hectares, with total production of fresh fruit bunches (FFB) of about 2.11 million tons per year. Total revenue from sales of fresh fruit bunches (FFB) reached Rp 4,923,213 per hectare, per year or about 4,923 trillion rupiah per year (Asmani, 2014).

In the plantation area of oil palm, there are various types of insect pests and controlled using synthetic insecticides because it is easy and fast. A synthetic insecticide in addition to killing pests, is also known to kill natural enemies from pests. How to control pests without using synthetic insecticides can be done through the management of agro-ecosystems that increase biodiversity to create a balance between pests and natural enemies. According to Rahayu and Sulistyowaty (2014), the planting of cover crops such as *T. ulmifolia* in oil palm plantations is reported to increase entomophagous group insects (Predators and parasitoids) and reduce the population of caterpillar pests.

An increase in the parasitoid population in oil palm plantations can be done through conservation. Conservation can be done by providing feed and habitat for the parasitoid imago. Plants containing pollen can be utilized as feed providers and habitat of natural enemy populations (parasitoids and predators). Pollen can be used as a source of food, shelter, and breeding, before the main host or prey is present in the planting area (Tyas et al., 2016).

T. subulata and *T. ulmifolia* plants can be utilized as part of conservation or preservation of predator and parasitoid life (Kurniawati and Martono, 2015). According to Steenis (2006) the *T. subulata* plant is a yellow alder flower that has a yellow color on the flower, and *T. ulmifolia* plant is a yellow alder flower which has a white color on the flower. *T. subulata* and *T. ulmifolia* are plants that contain pollen and nectar. Pollen and nectar can be utilized as feed and habitat providers for predator and parasitoid populations. (Tyas et al., 2016).

Data and information on insects that come to yellow alder flower *T. subulata* and *T. ulmifolia* in oil palm plantations are still inadequate. Therefore, this study was conducted to investigate

Table 1. Number of orders, families and species of phytophagous and entomophagous insects found in the yellow alder flower in the bloom and wilting phase

Yellow alder flower phase	Orde		Family		Species	
	<i>Turnera subulata</i>	<i>Turnera ulmifolia</i>	<i>Turnera subulata</i>	<i>Turnera ulmifolia</i>	<i>Turnera subulata</i>	<i>Turnera ulmifolia</i>
Bloom	7	7	30	13	220	47
Wilting	8	6	20	10	108	48

the role of the yellow alder flower (*T. subulata* and *T. ulmifolia*) as living habitats of entomophagous and phytophagous insects in enhancing the biodiversity around palm trees (*Elaeis guineensis* J.) at PT. Tania Selatan East Burnai Branch.

2. EXPERIMENTAL SECTION

This research was conducted in oil palm plantations PT. South Tania and Integrated Research Laboratory of Sriwijaya University from July to August 2017. The research was conducted using purposive sampling method, and the research location was divided into 2 regions. Area A near the river waters there are 3 *T. subulata*, and 3 *T. ulmifolia*, and area B away from river water there are 3 *T. subulata*, and 3 *T. ulmifolia*.

Collection of phytophagous and entomophagous insects in each yellow alder flower was conducted using visual observation, plastic bag trap, sweep net (insect net), killing jar (killer tube), and d-vacuum (insect vacuum). Each trap is laid in the morning, afternoon, afternoon and observed. Taking phytophagous and entomophagous insects from the trap device was performed 12 times for 6 weeks. The identification of phytophagous and entomophagous insects is performed on the basis of morphological features. The identification books used include (Kalshoven, 1981; Anderson, 1998; Zahradink et al., 1991).

Abiotic temperature and humidity factor data were collected at yellow alder flower using TH60 hybrid thermo hygrometer, and light intensity using LX 100 light meter. Each measurement was done in the morning, noon and afternoon then observed and calculated using Pearson non-parametrical correlation to know the effect of factor abiotic to the existence

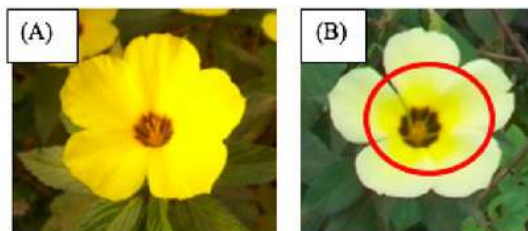


Figure 1. Yellow alder flower (A) *Turnera subulata* (B) *Turnera ulmifolia*

and number of insects in the yellow alder flower.

The data of phytophagous and entomophagous insects obtained are shown in tabular form. The data obtained is used to determine the number of insects phytophagous and entomophagous. The data obtained were used to find out the index of diversity of phytophagous and entomophagous insects at yellow alder flower. The data obtained were used to find out the non-parametric correlation between the abiotic factors of temperature, humidity and light intensity on the number of insects at the yellow alder flower.

The species diversity index (Shannon Index) (Magurran, 1998), is calculated by the formula:

$$H' = -\sum P_i \ln P_i \quad (1)$$

Where H' is species diversity index, p_i equals to n_i/N , n_i is number of species individual, and N is the number of all the individual.

The criteria for the index value of species diversity based on shannon-wiener are as follows: species diversity is categorized as low if $H' > 1$, medium if $H' = 1-3$ and high if $H' > 3$. (Fachrul, 2007).

The species dominance index is calculated by the Simpson formula (Indriyanto 2010):

$$D = \sum \left(\frac{n_i}{N} \right)^2 \quad (2)$$

Where D is species domination, n_i is the number of i individuals, and N is the total number of individual.

The criteria of dominance index value ranges from 0.5, the lower the lower the index value of dominance the better, because there is no dominant species or community structure in a stable state.

The species dominance index is calculated by the formula Fachrul (2007):

$$e = \frac{H'}{H_{max}} \quad (3)$$

Where e is evenness index, H' is species diversity H_{max} is maximum diversity ($\ln S$) and S is the number of species.

Criteria value of fairness index is around 0.5. Evenness of the species is low if $E < 0.5$, and high if $E > 0.5$ or evenness between species is relatively uniform or the number of individuals of each species is equal.

3. RESULTS AND DISCUSSION

The results of this study indicate that flower plants at yellow alder flower planted around palm trees can affect the presence of insects phytophagous and entomophagous. The results showed that the phytophagous insects found in yellow alder flower were classified into 6 orders, and 25 families and entomophagous insects on yellow alder flower were classified into 7 orders, and 15 families. The number of species of insects phytophagous and entomophagous found in yellow alder flower influenced by bloom and wilt yellow alder flower. Species of insects in the blossom phase of the flower of yellow alder flower more found than the wilting phase of the yellow alder flower (Table 1).

In Table 1 it can be seen that phytophagous and entomophagous insects are found in more yellow *T. subulata* plants than white *T. ulmifolia*. The number of species of insects phytophagous and entomophagous is influenced by the yellow color on the flowers of plants *T. subulata* and *T. ulmifolia*. The yellow color of the flowering of the *T. subulata* is more than in the *T. ulmifolia* flower (Fig. 1 A & B). It is suspected that the interest of the insects in *T. subulata* is influenced by the dominant yellow flower, and the interest of the insects on *T. ulmifolia* is influenced by the yellow color found in the center of the flower. Judge et al., (2016) study of yellow color can attract populations of phytophagous insects of 23.25 populations followed by a green color of 7.50 populations, and a red color of 6.00 populations. The Sunarno (2011) yellow study can attract many types of phytophagous insects compared to red and green.

In Table 1 it can be seen that the insect phytophagous found in the yellow alder flower in the bloom phase of the flower parts of the plant and the wilting phase of the flower part of the plant. The results showed that the phytophagous insects found in the yellow alder flower phases wilted were affected by the leaf glands (Figure 2 A & B). According to Steenis (2006) Leaf glands in yellow alder flower have a round shape and are located under the leaves of flowers. The leaf of yellow alder flower gland may affect the presence of a phytophagous insect such as *Comfonotus* sp. to eat. According to the research conducted by Erniawati and Kahono (2009), leaf glands in flowering plants can produce honey dew that has nectar content that can be used as insect food.

3.1 index of diversity, dominance and evenness

The results showed that the phytophagous and entomophagous insects had a relatively different index of diversity, dominance and evenness in the yellow alder flower (Table 2).

The dominant index of the species ($D < 0.5$) indicates that no species dominate other species or community structures in a stable state. The evenness index of the species ($E > 0.5$)

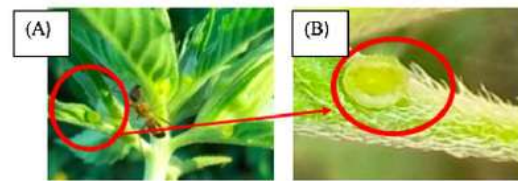


Figure 2. An ant insect on a yellow alder flower (A) *Comfonotus* sp (B) Leaf glands

Table 2. Index of diversity, dominance and evenness of phytophagous and entomophagous insects present at yellow alder flower

Community characteristic	Treatment	
	<i>Turnera subulata</i>	<i>Turnera ulmifolia</i>
Number of individual (Σ)	372	223
Diversity index (H')	2.912	2.603
Domination index (D)	0.091	0.125
Evenness index (E)	0.752	0.738

Description: The species diversity index of $H' > 2$ indicates that species diversity is abundant or moderate (Fachrul, 2007).

indicates that evenness between species is relatively uniform or the number of individuals of each species is equal.

The results showed that the index of species diversity, the dominance index, and the evenness index of the phytophagous and entomophagous insects were planted at yellow alder flower in the good category (Table 2). It can be seen from the index value of diversity that is above 2, the dominance index is close to 0.1 and the evenness index is above 0.7. These figures suggest that the diversity of species of phytophagous and entomophagous insects at yellow alder flower is quite high, no species are predominant and the fairness of individuals or species is high enough. The relatively low index of species dominance shows that no species dominate the community, and also the high-evenness index provides information that the species in the community are spreading flat.

3.2 Pearson correlation coefficient

The results showed that abiotic factors of temperature, humidity and light intensity there are positive (correlated) and there is a negative (not correlated). In each region and plant seen that the temperature does not affect the number of insects found. Moisture and light intensity can affect the number of insects found (Table 3).

The results showed that the number of phytophagous and entomophagous insects at yellow alder flower can be influenced by species and areas near and far from the water. In (Table 3) it can be seen that the humidity of the environment in *T. subulata* near the waters has a significance value of $0.01 < 0.05$. It shows

Table 3. Significance values Pearson correlation between abiotic factors (temperature, humidity and light intensity) with total individual phytophagous and entomophagous insects on yellow alder flower

Research Location	Abiotic factor		
	Temperature	Humidity	Light intensity
Area A (Near water area)			
<i>Turnera subulata</i>	-0.88	0.01	0.34
<i>Turnera ulmifolia</i>	-0.19	-0.27	0.56
Area B (Far from water area)			
<i>Turnera subulata</i>	-0.28	-0.02	-0.04
<i>Turnera ulmifolia</i>	-0.63	-0.34	0.29

Description: if the value of significance < 0.05, then correlated, If the significance value > 0.05, then not correlated

there is a correlation between abiotic factors of humidity to the number of insects. Environmental humidity in *T. subulata* area far from water has significance value $-0.34 > 0,05$. It shows that there is no correlation between abiotic factors of humidity to the number of insects.

4. CONCLUSIONS

T. subulata and *T. ulmifolia* plant species planted around oil palm trees have relatively different effects in inviting the presence of species of phytophagous and entomophagous insects. *Turnera subulata* plants can attract 6 phylogenetic insects, 25 families and 220 heads, and *Turnera ulmifolia* plants can attract 7 phytophagous insects, 15 families and 108 heads. *T. subulata* can attract twice as many phytophagous and entomophagous insects than *T. ulmifolia*. *T. subulata* and *T. ulmifolia* plants can maintain the phytophagous and entomophagous insect communities in oil palm cultivation. It can be seen through high diversity index. It can be seen through high species diversity index (2,603-2,912), low dominance index (0,091-0,125), and high evenness index (0,738-0,752). Abiotic factors of humidity play an important role in influencing the presence of insects with correlation coefficient value of 0.01 in *T. subulata* area near river waters.

REFERENCES

Anderson, B. P. (1998). *The Insects Of Australia*. Melbourne University Press, Australia
 Asmani, N. (2014). Kelapa Sawit Komoditas Unggulan Sumatera Selatan Yang Ramah Lingkungan. In *Seminar GAPKI Sumatera selatan* : 6

Erniawati and S. Kahono (2009). Peranan Tumbuhan Liar Dalam Konservasi Serangga Penyerbuk Ordo Hymenoptera. *J. Teknik Lingkungan*, **10**(2); 195–203
 Fachrul, M. F. (2007). *Metode Saampling Bioekologi*. Bumi aksara, Jakarta
 Kalshoven, L. (1981). *Pest of Crops In Indonesia. Revised and translated by P.A. van der Laan*. PT Ichtiar Baru-Van Hoeve
 Kurniawati, N. and E. Martono (2015). Peran Tumbuhan Berbunga sebagai Media Konservasi Artropoda Musuh Alami The Role of Flowering Plantsin Conserving Arthropod Natural Enemies. *Perlindungan Tanaman Indonesia*, **19**(2); 53–59
 Magurran, A. E. (1998). *Ecological Diversity and Its Measurant*. Princenton University Press
 Nasution, S. H., C. Hanum, and J. Ginting (2014). Pertumbuhan Bibit Kelapa Sawit (*Elaeis guineensis* Jacq.) Pada Berbagai Perbandingan Media Tanam Solid Decanter Dan Tandan Kosong Kelapa Sawit Pada Sistem Single Stage. *Online Agroekoteknologi*, **2**(2); 691–701
 Steenis, V. (2006). *Flora*. Pradya Paramitha
 Tyas, I. L. M., A. P. P. Sari, M. Saefi, and W. C. Adi (2016). Distribusi Temporal Arthropoda Pada Tumbuhan Liar Krokot (*Portulaca oleracea* L.) Di Lahan Pertanian Tomat Desa. In *Prosiding Seminar Nasional II Tahun 2016, Kerjasama Prodi Pendidikan Biologi Fkip Dengan Pusat Studi Lingkungan Dan Kependudukan (Pslk) Universitas Muhammadiyah Malang*, pages 755–763
 Zahrading, J., F. Severa, M. J, and M. Vana (1991). *The Illustrated Book Of Insect*. Great Britain:310

Diversity of Phytophagous and Entomophagous Insect on Yellow Alder Flower (*Turnera subulata* J.E SM and *Turnera ulmifolia* L.) Around the Palm Oil (*Elaeis guineensis* J.) Plantations

ORIGINALITY REPORT

8%

SIMILARITY INDEX

MATCH ALL SOURCES (ONLY SELECTED SOURCE PRINTED)

★biovalentia.mipa.unsri.ac.id

Internet

8%

EXCLUDE QUOTES ON

EXCLUDE MATCHES < 1%

EXCLUDE BIBLIOGRAPHY ON

FORMAT PENILAIAN (VALIDASI & PEER REVIEW)
LEMBAR
HASIL PENILAIAN SEJAWAT SEBIDANG ATAU PEER REVIEW
KARYA ILMIAH : JURNAL ILMIAH

Jurnal Artikel Ilmiah : Diversity of Phytophagous and Entomophagous Insect on Yellow Alder Flower (*Turnera subulata* J.E SM and *Turnera ulmifolia* L.) Around the Palm Oil (*Elaeis guineensis* J.) Plantations Sumatera

Penulis Artikel Ilmiah : Arum Setiawan

Identitas Jurnal Artikel Ilmiah : a. Nama Jurnal : Science and Technology Indonesia
b. Nomor/Volume/Hal : 3/3/130-133
c. Edisi (bulan/tahun) : Juli/2018
d. Penerbit : Jurusan Kimia FMIPA Universitas Sriwijaya
e. Jumlah Halaman : 4

Kategori Publikasi Jurnal Ilmiah (beri \surd pada kategori yang tepat) : Jurnal Ilmiah Internasional Bereputasi
 Jurnal Ilmiah Internasional
 Jurnal Ilmiah Nasional Terakreditasi Sinta 1, Sinta 2
 Jurnal Ilmiah Nasional Terakreditasi **Sinta 3**, Sinta 4
 Jurnal Ilmiah Nasional Tidak Terakreditasi

I. Hasil Penilaian Validasi :

No.	ASPEK	URAIAN/KOMENTAR PENILAIAN
1.	Indikasi Plagiasi	8 %
2.	Linearitas	Topik linier dengan bidang keilmuan biologi konservasi

II. Hasil Penilaian Peer Review :

Komponen Yang Dinilai	Nilai Maksimal Jurnal Ilmiah (isikan di kolom yang sesuai)					Nilai Akhir Yang Diperoleh
	Internasional Bereputasi (Maks 40)	Internasional (Maks 20)	Nasional Terakreditasi S1, S2 (Maks 25)	Nasional Terakreditasi S3, S4 (Maks 20)	Nasional tidak Terakreditasi (maks 10)	
Kelengkapan dan Kesesuaian unsur isi jurnal (10%)				2		2
Ruang lingkup dan kedalaman pembahasan (30%)				6		6
Kecukupan dan Kemutakhiran data/informasi dan metodologi (30%)				6		6
Kelengkapan unsur dan kualitas penerbit (30%)				6		6
Total = (100%)				20		20
Kontribusi Pengusul (Penulis Pertama /Anggota Utama)	Anggota Utama = $(0,4 \times 20) / 2 = 4$					4
KOMENTAR/ULASAN PEER REVIEW						
• Kelengkapan dan Kesesuaian Unsur:	Paper terkait diversitas Diversity of Phytophagous and Entomophagous. Isi paper sudah memenuhi kaidah-kaidah karya ilmiah, dan sudah sesuai dengan bidang biologi konservasi.					
• Ruang Lingkup dan Kedalaman Pembahasan:	Hasil penelitian dibahas cukup komprehensif dengan penyampaian perbandingan dari temuan-temuan penelitian lainnya dan teori terkait. Referensi yang diacu dalam pembahasan sudah cukup update untuk bidang kajian ini.					
• Kecukupan & Kemutakhiran Data & Metodologi:	Data-data hasil penelitian cukup baik dan didukung penjelasan dan gambar yang ditampilkan cukup menarik. Data didapatkan dengan menggunakan metode yang standard.					
• Kelengkapan Unsur & Kualitas Penerbit:	Penerbit Jurusan Kimia FMIPA Universitas Sriwijaya berkualitas baik, dan jurnal terindeks di SINTA 3.					

Surabaya, 18 Mei 2020
Penilai 1



Prof. Hery Purnobasuki, M.Si., Ph.D.
NIP 196705071991021001
Unit Kerja : Jurusan Biologi FST Unair
Bidang Ilmu : Biologi
Jabatan/Pangkat : Guru Besar/ Pembina Utama Madya

FORMAT PENILAIAN (VALIDASI & PEER REVIEW)

LEMBAR

HASIL PENILAIAN SEJAWAT SEBIDANG ATAU PEER REVIEW

KARYA ILMIAH : JURNAL ILMIAH

Jurnal Artikel Ilmiah : Diversity of Phytophagous and Entomophagous Insect on Yellow Alder Flower (*Turnera subulata* J.E SM and *Turnera ulmifolia* L.) Around the Palm Oil (*Elaeis guineensis* J.) Plantations Sumatera

Penulis Artikel Ilmiah : Arum Setiawan

Identitas Jurnal Artikel Ilmiah : a. Nama Jurnal : Science and Technology Indonesia
 b. Nomor/Volume/Hal : 3/3/130-133
 c. Edisi (bulan/tahun) : Juli/2018
 d. Penerbit : Jurusan Kimia FMIPA Universitas Sriwijaya
 e. Jumlah Halaman : 4

Kategori Publikasi Jurnal Ilmiah : Jurnal Ilmiah Internasional Bereputasi
 (beri √ pada kategori yang tepat) Jurnal Ilmiah Internasional
 Jurnal Ilmiah Nasional Terakreditasi Sinta 1, Sinta 2
 Jurnal Ilmiah Nasional Terakreditasi **Sinta 3**, Sinta 4
 Jurnal Ilmiah Nasional Tidak Terakreditasi

I. Hasil Penilaian Validasi :

No.	ASPEK	URAIAN/KOMENTAR PENILAIAN
1.	Indikasi Plagiasi	8 %
2.	Linearitas	V

II. Hasil Penilaian Peer Review :

Komponen Yang Dinilai	Nilai Maksimal Jurnal Ilmiah (isikan di kolom yang sesuai)					Nilai Akhir Yang Diperoleh
	Internasional Bereputasi (Maks 40)	Internasional (Maks 20)	Nasional Terakreditasi S1, S2 (Maks 25)	Nasional Terakreditasi S3, S4 (Maks 20)	Nasional tidak Terakreditasi (maks 10)	
Kelengkapan dan Kesesuaian unsur isi jurnal (10%)				2		1
Ruang lingkup dan kedalaman pembahasan (30%)				6		4
Kecukupan dan Kemutakhiran data/informasi dan metodologi (30%)				6		4
Kelengkapan unsur dan kualitas penerbit (30%)				6		5
Total = (100%)				20		14
Kontribusi Pengusul (Penulis Pertama /Anggota Utama)	Jurnal: Science and Technology Indonesia. Vol. 3(3): 130-133. 2018. Penulis ke 3 dari 3. Nilai maksimal 70%. Nilai pengusul : $(0,4 \times 0,7 \times 20)/2 = 2,8$					2,8
KOMENTAR/ULASAN PEER REVIEW						
• Kelengkapan dan Kesesuaian Unsur:	Judul dan beberapa narasi diblok. Tujuan dan kesimpulan tidak sambung.					
• Ruang Lingkup dan Kedalaman Pembahasan:	Masih dalam ruang lingkup tetapi pembahasan tidak mengarah peran spesies sebagai obyek penelitian.					
• Kecukupan & Kemutakhiran Data & Metodologi:	Data cukup memenuhi. Metode cukup layak untuk riset ini.					
• Kelengkapan Unsur & Kualitas Penerbit:	Penerbit : Jurusan Kimia FMIPA Universitas Sriwijaya. Cukup lengkap kriteria sebagai penerbit.					

Yogyakarta, 20 Juni 2020

Penilai 2

tanda tangan

Prof. Dr. Suwarno Hadisusanto

NIP 195411161983031002

Unit Kerja : Fakultas Biologi UGM

Bidang Ilmu : Biologi/Ekologi

Jabatan/Pangkat : Guru Besar/ Pembina Utama Madya