

REPORT OF SWAMP BUFFALO PAMPANGAN, *BUBALUS BUBALIS*
(LYDEKKER, 1913) HABITAT AT BANYUASIN (RAMBUTAN) AND OGAN ILIR
(INDRALAYA) DISTRICT, SOUTH SUMATRA, INDONESIA

Rahmat Pratama, Yuanita Windusari*, Laila Hanum, Indra Yustian and Arum Setiawan

ABSTRACT

Habitat analysis, include biophysics environmental conditions of swamp buffalo (*Bubalus bubalis*) has been conducted in June until December 2017 in Rambutan (Banyuasin) and Ogan Ilir (Indralaya) district, south Sumatra and the laboratory of Animal Physiology, Department of Biology, Faculty of Mathematics and Natural Sciences, University of Sriwijaya, Indralaya. The purpose of research is to know swamp buffalo habitat characteristics at the district of Rambutan (Banyuasin) and Indralaya (Ogan Ilir) by physical, chemical, soil and vegetation conditions in the habitat of buffalo. The sampling method of buffalo was used purposive sampling method whereas vegetation sampling using the quadrant method or plot. Data analysis techniques used are in qualitative and quantitative. The data is then presented in the form of tables and diagrams and narratives to interpret the data. Based on identification and field observations of vegetation conditions, Rambutan vegetation was consist of 15 species and Indralaya vegetation was consist of 9 species for swamp buffalo food. Temperature inside and outside of cage in Indralaya is 22.3 to 31.3°C while temperature in Rambutan is 23.2 to 32.8°C.

Potential of hydrogen soil is 5.10 to 5.60

and always inundated by water. It can be concluded that the form of lowland biophysics environmental. Conditions of swamp buffalo dominated by grasses belonging to the family of Cyperaceae, Graminae, Fabaceae and Poaceae as the main source of food, while the state of the temperature is very supportive for buffalo habitat.

Keywords: *Bubalus bubalis*, buffalo, Pampangan swamp buffalo, habitat, vegetation, temperature, soil, environmental

INTRODUCTION

Swamp buffalo (*Bubalus bubalis*) in Rambutan and Indralaya district is one of the original buffalo varieties and the richness of germplasm of south Sumatra. In 2010, the Government of Indonesia through the Director General of PKH at that time supported by experts from Balitbangtan-Kementan and teachers of Kemendikbud start a new level in the recognition of buffalo clumps in Indonesia as the original livestock owned by Indonesia. The results have been established seven clumps of buffalo cattle Indonesia namely buffalo Pampangan and Simelue (*Bubalus bubalis sumateranensis*). Its distribution covers only south Sumatra and one of the largest distributions in

district of Pampangan (Ogan Komering Ilir: 4.799 buffaloes), Rambutan (Banyuasin: 1.623 buffaloes) and Indralaya (Ogan Ilir: 2.477 buffaloes) (BPS, 2015). So that this buffalo is often referred to as buffalo Pampangan.

Reported by Animal Husbandry Department Ogan Komering Ilir (2012), general characteristics of buffalo Pampangan in Rambutan, Indralaya and Pampangan or other areas nearby that has a body shape tall and big, black leather, head and ears with long hair, short horns circular heading back down, and then to direction in a circular spiral shape, elbow-shaped body, slender leads such as dairy cow type, udder developed good and symmetrical, and calm temperament.

Pampangan swamp buffaloes located in the district of Rambutan spend their lives and live in the swamp area of Rambutan which is a customary land that has a land area of approximately 1.200 hectares in Rambutan (Animal Husbandry Department Ogan Komering Ilir, 2012). and 700 hectares in Indralaya (Animal Husbandry Department Banyuasin, 2014). This area had not increased in size and experienced a reduction in land area, but the livestock population is always increasing, causing an increase in population without the provision of feed in the area where the buffalo foraging.

Along with increasing demand for meat, original variant of swamp buffalo in Pampangan, Rambutan and Indralaya district began to be sidelined and maintained along with buffalo swamp taken from other regions in Indonesia such as Lampung. Conditions that lead to the original variant buffalo population in sub Rambutan Pampangan dwindling. Understanding of the buffalo habitat will can give information about what the buffalo needs in it's life. One of them is the area of land needed and how much the carrying

capacity of the land for buffalo breeding and can support the fulfillment of buffalo nutrients. This information is important in the effort to condition the environment and design the management in accordance with the needs of buffalo so it is expected to increase the population of Pampangan swamp buffaloes in the Rambutan and Indralaya district.

MATERIALS AND METHODS

The tools used are stationery, notebook, GPS, camera, questionnaire, paper label, meter roll, pH meter water, soil tester, rope, and thermohyrometer. The materials needed are buffalo water samples and soil samples for analysis in the laboratory.

Method of sampling buffalo

Method used to take samples of buffaloes observed were purposive sampling method. Buffalo samples were determined by selecting samples among buffalo populations in accordance with the desired researchers with intent and purpose that the sample can represent the characteristics of the population of buffalo that has been known previously. Technique of collecting data by direct observation by seeing and recording directly condition of swamp buffalo habitat in district of Rambutan and Indralaya. The research data will be tabulated and analyzed descriptively to get buffalo habitat data.

Site determination and sampling method observation analysis of vegetation potential of buffalo feed

A. Sampling location

Based on location survey results, the

location of sampling is determined by purposive random sampling method. The sampling site consists of 4 observation sites based on different types of vegetation and often passed to buffalo feeding so that it can represent the type of vegetation in the buffalo habitat area (Figure 1a).

B. Sampling method

Sampling technique using quadrat sampling technique (Kusmana, 1997). Sampling by making 4 transects size 100x100 meter placed at each location. Making this plot to know the index of dominance of the types of vegetation that live in buffalo habitats that have the potential as buffalo feed. Potential vegetation types as a feed is usually from species of grasses and herbs. Because of grasses were main source of feed for survival of buffalo. The measured data was recorded in the tally sheet. In this survey activity used the growth criteria of herbs beginning sprouts up to <1.5 meters tall.

Observation of physical factors (temperature and humidity)

Measurement of temperature and humidity was used to determine the amount of temperature and humidity in swamp buffalo habitat in the district of Rambutan and Indaralaya so that the conclusions can be drawn on the survival of buffalo. This temperature and humidity measurement is carried out inside and outside the cage at a distance of 1 km from the cage. Temperature and humidity data is taken every once a week and during the month of June to August. Measurement of temperature and humidity by using thermohygrometer is by putting thermohygrometer in place to be measured humidity then wait and read the scale. Land measurements are also done inside and outside the cage using soil tester

Observation of soil pH and mineral content

Soil pH measurement was used to determine the value of soil pH from Pampangan swamp buffalo habitat in Kecamatan Rambutan so that it can be drawn conclusion of the magnitude of soil pH and its effect on the survival of buffalo by using tool that was Soil Tester that is by plugged soil pH into the soil to be measured soil pH then soil samples were analyzed for its contents.

Supporting data collection

Supporting data collection was done to support the data that have been obtained, the data obtained will be presented in the form of narration. The collection of supporting data is using interview method, field observation and documentation every thing done in every observation.

A. Interview

Data collection is done by direct interviews of people who have buffalo cattle to obtain information about buffalo. The questions asked are:

1. Where does the buffalo feed come from?
2. Which areas are often crossed by buffalo?
3. What is the daily activity and condition of the buffalo habitat?
4. What kinds of grass are buffalo eating?

B. GPS data

GPS data was used to determine the coordinates of latitude, longitude, with the system of writing Minutes Second Degree (DMS) from the observed location.

C. Documentation

Documentation is performed as authentic proof of any observations that have been made.

Samples of Pampangan swamp buffaloes in Rambutan and Indralaya were observed and each observation sampling activity was documented using a digital camera.

Identification of potential feed vegetation

Identification was done by observing and carried out morphological recordings and vegetation characteristics that have the potential to feed buffalo. Documentation was performed using the camera on each potential vegetation of feed found in each plot. Identification of vegetation by using the book of identification of the book essay Rose, 1989; Steenis *et al.*, 2006; Banner, 2011; Brown, 1979; Undersander, 1996; Welsh, 2003.

Data analysis

Data obtained from observations will be presented in qualitative and quantitative.

A. Qualitatively

Data obtained from the results of the recording of the condition of swamp buffalo habitat in Rambutan and Indralaya subdistrict were either the result of the interview, observation of physical factors including temperature and humidity as well as observation of soil pH obtained and mineral soil content is described, and some data presented in the form of tables and drawings in accordance with the results obtained.

B. Quantitatively

The data obtained from observation of Vegetation Analysis of the potential of feed is calculated quantity quantitative value of vegetation parameter, especially in determining index of important value According Kusmana (1997), done with the following formula:

$$IV = KR+FR$$

Furthermore, Shannon's index (Shannon's index) is used to determine the diversity of plant species. According Odum (1994) with the following formula:

$$H' = - \sum (ni/N) \log (ni/N) \text{ or } - \sum Pi \log Pi$$

where H' was the index of Shannon's diversity, ni was the value of importance for each species, N is the total kepentigan value and Pi is the probability of interest for each species that is ni/N . According to Barbour *et al.* (1987) that the H' values range from 0 to 7 with criteria (a) 0 to 2 being low, (b) 2 to 3 are moderate, and (c) 3 or more are high.

RESULTS AND DISCUSSION

Environmental condition of swamp buffalo habitat

Maintenance of buffalo in Rambutan and Indralaya is one of the main efforts of the population there, apart from agriculture such as rubber, palm and cultivation. This livestock business is done by the people of Rambutan and Indralaya districts on the swamp land. Business buffalo cattle carried out by removing buffalo from the cage in the morning in the swamp land and lead back in the afternoon. The environment of buffalo habitats in Rambutan and Indralaya has source of feed derived from wild grass vegetation in pastures where buffalo foraging. There are no breeders who provide additional feed or processing of animal feed. The availability of feed and water availability is closely related to seasonal changes occurring in the Rambutan and Indralaya regions. This greatly

affects the buffalo to wallow and drink, the source of water in the dry season comes from streams flowing along the buffalo habitat.

Environmental conditions of swamps form made this area very difficult to find a source of clean water for the needs of buffalo breeders, to get a source of clean water buffalo breeders must travel a distance of ± 300 m (Windusari *et al.*, 2014). In the dry season, the river is very useful for buffalo bath and wallow because in this season almost all the dry puddles. The water pH conditions at some sampling points showed that water content was acid with pH value of $3 < \text{pH} < 4$. Rainfall greatly affects the water content and the fibers contained in the growing grass. forage that grows in conditions of considerable rain and high humidity will contain more water, in addition to forage more nutritious in the rainy season than in the dry season (Figure 2 to Figure 7).

Temperature and humidity

Based on observation and temperature measurement by using thermohygrometer in 2 locations that is inside and outside the cage as far as 1 km to saw the difference of both, got data of temperature result which increase its temperature during afternoon and temperature decrease during evening until morning. This temperature is strongly influenced by the weather in the rainy season and dry season. Temperature in buffalo buffalo habitat area (*Bubalus bubalis*) Rambutan and Indralaya could be seen in Table 1 and Table 2 below.

Average temperature (June to August) in Rambutan for cage inside was 21.3 ± 33.6 and outside the enclosure ranged between $22.6 \pm 39.7^\circ\text{C}$ while the average temperature in Indralaya for in a cage that was $21.5 \pm 38.4^\circ\text{C}$ and outside the cage ranges $22.1 \pm 38.8^\circ\text{C}$. The temperature indicates that the habitat was very suitable for swamp

buffalo breeding. Normal temperature for swamp buffalo was 38.4°C (Fahimmuddin, 1975) and in temperature (27.47°C) corresponding to the normal rectal temperature of 38.33°C as derived by the linear regression equation $ST = 9.343 \times RT - 330.7$ ($R^2 = 0.79$) (Kumar and Kumar, 2013). According to Parakkasi (1995), temperature and humidity greatly affect mechanism of regulating temperature of buffalo body, heat expenditure, for example by sweating or through repiration will be faster.

Soil pH, moisture and mineral content

Based on measurements of soil pH on Rambutan and Indralaya showed values ranging between $5.10 < \text{pH} > 5.60$, this shows that soil pH is acidic. Poerwowidodo (1991), cause soil acidity was H^+ and AL^{3+} ion which are in soil solution and absorption complex. Both of these cations affect acidity of soil in different ways. The difference was related to the source and nature of charge that absorbs the cations. Meanwhile, according to Michael (1991), soil pH value was good for plant growth that is between 5.0 to 8.4 and soil fertility bacteria were very much found in soil pH between 6.0 dan 8.2. Generally, plants can withstand ups and downs of pH in the range that was not too extreme Rao (1994), carbon (C), nitrogen (N), kalium (K), calcium elements (Ca), and magnesium (Mg) were macro elements needed for large growth grasses so that Rambutan and Indralaya were suitable places for swamp buffalo development.

Food vegetation conditions for habitat buffalo (*Bubalus bubalis*) of Rambutan and Indralaya

Based on identification and field observations of vegetation conditions, Rambutan vegetation was consist of 15 species that includes *Andropogon ischaemum*, *Brachiaria decumbens*, *Digitaria sanguinalis*, *Echinochloa stagnina*,



Figure 1. Research map: research conducted at two locations: Banyuasin district (Rambutan) and Ogan Ilir (Indralaya).



Figure 2. Puddles conditions during dry season.



Figure 3. Swamp buffalo much time to soak.



Figure 4. Buffalo condition in Rambutan district when looking for food.



Figure 5. Condition of buffalo habitat in Indralaya district.



Figure 6. Cage buffalo in Indralaya district no roof cage.



Figure 7. Buffalo cage in Rambutan has cage roof.

Tabel 1. The temperature conditions of cage inside and outside in Rambutan district.

Temperature	Observation	Cage inside	Cage outside
June	First week (June 01 2017)	22.1-29.4°C	23.3-29.8°C
	Second week (June 08 2017)	23.5-27.5°C	24.2-28.4°C
	Third week (June 15 2017)	25.6-28.6°C	26.3-29.2°C
	Fourth week (June 22 2017)	22.3-30.3°C	23.5-31.4°C
	Fifth week (June 29 2017)	24.7-31.7°C	25.2-36.5°C
July	First week (July 06 2017)	25.3-29.6°C	26.5-29.8°C
	Second week (July 13 2017)	21.3-27.1°C	22.6-28.7°C
	Third week (July 20 2017)	26.1-33.6°C	26.2-34.3°C
	Fourth week (July 27 2017)	23.4-28.6°C	24.4-28.9°C
August	First week (August 02 2017)	27.6-30.2°C	27.5-39.7°C
	Second week (August 09 2017)	21.9-31.7°C	22.7-32.5°C
	Third week (August 16 2017)	24.3-30.2°C	25.2-33.1°C
	Fourth week (August 23 2017)	26.1-29.8°C	26.5-30.3°C
	Fifth week (August 30 2017)	23.3-30.5°C	24.2-34.5°C

Table 2. The temperature conditions of cage inside and outside in Indralaya district.

Daily temperature	Observation	Average temperature in cage inside	Average temperature in cage outside
June	First week (June 02 2017)	23.2-33.4°C	23.8-33.9°C
	Second week (June 09 2017)	22.6-29.8°C	23.2-30.1°C
	Third week (June 16 2017)	25.2-35.2°C	25.8-35.4°C
	Fourth week (June 23 2017)	23.4-33.2°C	23.9-33.5°C
	Fifth week (June 30 2017)	21.5-28.5°C	22.1-29.6°C
July	First week (July 07 2017)	24.1-28.4°C	24.9-32.2°C
	Second week (July 14 2017)	22.4-31.2°C	22.8-31.5°C
	Third week (July 21 2017)	25.2-38.4°C	25.9-38.8°C
	Fourth week (July 28 2017)	23.2-30.4°C	23.8-30.7°C
August	First week (August 03 2017)	24.1-28.4°C	24.8-28.8°C
	Second week (August 10 2017)	23.2-29.8°C	24.1-30.4°C
	Third week (August 17 2017)	22.4-29.2°C	23.1-29.6°C
	Fourth week (August 24 2017)	23.5-29.8°C	24.0-30.1°C
	Fifth week (August 31 2017)	22.9-29.3°C	23.7-30.5°C

Tabel 3. Soil pH, moisture and mineral content in Indralaya and Rambutan district.

Location	Parameter		Soil mineral content					
	pH	Humidity	C	N	K	Na	Ca	Mg
Rambutan	5.10	3.90	2.89	0.39	0.19	0.22	0.68	0.10
Indralaya	5.20	4.50	0.27	0.27	0.96	0.22	0.90	0.18

Table 4. Food vegetation composition at swamp buffalo habitat in Indralaya and Rambutan.

No	Family	Species	Local name	Attendance on transects							
				Rambutan				Indralaya			
				I	II	III	IV	V	VI	VII	VIII
1.	Fabaceae	<i>Aeschynomene sensitive</i>	Rumput Pete	-	-	-	-	+	-	-	+
2.	Graminae	<i>Andropogon ischaemum</i>	Rumput Pasir	+	-	+	+	-	-	-	-
3.	Graminae	<i>Brachiaria decumbens</i>	Kumpai Tembaga	-	+	+	-	-	-	-	-
4.	Graminae	<i>Brachiaria muticum</i>	Rumput Malela	-	-	-	-	-	+	-	+
5.	Graminae	<i>Digitaria sanguinalis</i>	Kumpai Bebulu	+	-	+	-	-	-	-	-
6.	Poaceae	<i>Echinochloa stagnina</i>	Rumput Burgu	+	-	-	+	-	-	-	-
7.	Cyperaceae	<i>Eleocharis dulcis</i>	Rumput Kasur	+	+	-	+	+	+	-	+
8.	Graminae	<i>Eleusine indica</i>	Rumput Belulang	-	+	-	+	+	-	+	-
9.	Cyperaceae	<i>Fimbristylis annua</i>	Alang Lebak	-	-	+	-	+	-	+	+
10.	Poaceae	<i>Hymenachne acutigluma</i>	Rumput Kumpai	+	-	-	+	-	-	-	-
11.	Graminae	<i>Imperata cylindrica</i>	Ilalang	-	-	+	-	-	-	-	-
12.	Poaceae	<i>Ischaemum rugosum</i>	Bleblem	+	-	-	+	-	-	-	-
13.	Cyperaceae	<i>Kyllinga brevifolia</i>	Rumput Teki	-	-	+	-	+	-	-	-
14.	Poaceae	<i>Leersia hexandra</i>	Rumput Banta	-	+	-	-	-	-	+	+
15.	Poaceae	<i>Pennisetum purpureum</i>	Rumput Gajah	-	-	-	-	-	+	-	+
16.	Graminae	<i>Oryza rupifogon</i>	Kumpai Padi	-	-	+	+	+	-	+	-
17.	Graminae	<i>Paspalum conjugatum</i>	Kumpai Minyak	+	+	+	-	-	-	-	-
18.	Poaceae	<i>Saccharum spontaneum</i>	Rumput Gelagah	-	+	-	-	-	-	-	-
Number of family / species				3/7	3/6	2/8	3/7	3/6	3/3	3/4	4/6

Eleocharis dulcis, *Eleusine indica*, *Fimbristylis annua*, *Hymenachne acutigluma*, *Imperata cylindrica*, *Ischaemum rugosum*, *Kyllinga brevifolia*, *Leersia hexandra*, *Oryza rupifogon*, *Paspalum conjugatum*, *Saccharum spontaneum* and Indralaya vegetation was consist of 9 species that includes *Aeschynomene sensitiva*, *Brachiaria muticum*, *Eleocharis dulcis*, *Eleusine indica*, *Fimbristylis annua*, *Kyllinga brevifolia*, *Leersia hexandra*, *Pennisetum purpureum* and *Oryza rupifogon*. Environmental conditions of swamp buffalo dominated by grasses belonging to the family of Cyperaceae, Graminae, Fabaceae and Poaceae as the main source of food.

Viewed from presence in Table 4, *Eleocharis dulcis*, *Eleusine indica*, *Fimbristylis annua*, and *Oryza rupifogon* has the highest presence in Rambutan and Indralaya Transects. This was indicated by presence *Eleocharis dulcis* at 6 research transects while *Eleusine indica*, *Fimbristylis annua*, and *Oryza rupifogon* found on 4 transects and the lowest attendance was *Imperata cylindrica* and *Saccharum spontaneum* founded only in 1 transects of the study. *Eleocharis dulcis* very much found on the plot as it suits its habitat. In addition, this species was very useful in erosion control in swamplands (Banner, 2011).

Important value (IV)

Based on Important Value (IV), *Eleocharis dulcis* was 33.32613% and *Paspalum conjugatum* with 32.94816% while the lowest important value was *Leersia hexandra* and *Imperata cylindrica* 5.223182% in Rambutan district and *Eleocharis dulcis* also dominates in Indralaya district with important value was 35.47451% and *Brachiaria muticum* 28.11162% while the lowest important value was *Aeschynomene sensitiva* 13.67592% this indicates that *Eleocharis dulcis* and *Paspalum*

conjugatum dominates and had important role in the habitat of swamp buffalo in Rambutan and Indralaya district. Index of diversity of feed species in Habitat Rambutan was 0.998167154 while for Indralaya was 2.679957417. Based on the benchmark value of the species diversity index, the level of diversity of feed in region was relatively low Rambutan namely $0 < H' < 1$ while feed in the Indralaya region was moderate $2 < H' < 3$ (Barbour *et al.*, 1987).

REFERENCES

- Animal Husbandry Department Banyuasin. 2014. *Populasi Ternak Menurut Jenisnya Tahun 2008 sampai Tahun 2014*. Animal Husbandry Department Banyuasin. Banyuasin district, Indonesia.
- Animal Husbandry Department Ogan Komering Ilir. 2012. *Penetapan Kerbau Pampangan*. Animal Husbandry Department Ogan Komering Ilir. Kayu Agung, Indonesia.
- Banner, R., M. Pratt and J. Bowns. 2011. *Grasses and Grasslike Plants of Utah, A Field Guide*. Utah State University Extension Cooperative Extension, Utah State University, USA.
- Barbour, M.G., J.H. Burk and W.D. Pitts. 1987. *Terrestrial Plant Ecology*, 2nd ed, The Benjamin/Cummings. Publishing Company. Inc. Los Angeles, USA.
- Ditjen, P.K.H. 2011. *Penetapan Rumpun/galur Ternak Indonesia Tahun 2010-2011*. Direktorat Jenderal Peternakan dan Kesehatan Hewan, Jakarta, Indonesia.
- Ditjen, P.K.H. 2013. *Surat Keputusan Dirjen PKH Tentang Penetapan Kerbau Simeleue*

- Sebagai Rumpun Ternak Indonesia*. Jakarta (Indonesia): Direktorat Jenderal Peternakan dan Kesehatan Hewan, Indonesia.
- Ditjenak. 2003. *Statistik Peternakan 2003*. Jakarta (Indonesia): Direktorat Jenderal Peternakan, Indonesia.
- Fahimmuddin, M. 1975. *Domestic Water Buffalo*. Oxford and IBH Publishing. Co. GG joupath, New Delhi, India. p. 422.
- Kumar, V. and P. Kumar. 2013. Impact of thermal stress on rectal, skin surface temperatures, respiration rate, heat load index and heat storage in lactating Murrah buffaloes (*Bubalus bubalis*). *Buffalo Bull.*, **32**(2): 1141-1144.
- Kusmana, C. 1997. *Metode Survey Vegetasi*. Institut Pertanian Bogor, Bogor, Indonesia.
- Michael, P. 1991. *Metode Ekologi Untuk Penyelidikan Lapangan dan Laboratorium*. UIP Press, Jakarta, Indonesia.
- Odum, E.P. 1994. *Dasar-Dasar Ekologi. Edisi Ketiga*. Gadjah Mada University Press, Yogyakarta, Indonesia.
- Parakkasi, A. 1995. *Ilmu Nutrisi dan Makanan Ternak Ruminan*. UI-PRESS, Jakarta, Indonesia.
- Poerwowidodo. 1991. *Ganesa Tanah: Proses Genesa dan Morfologi*. Rajawali, Jakarta, Indonesia.
- Rose, F. 1989. *Colour Identification Guide to the Grasses, Sedges, Rushes and Ferns of the British Isles and North Western Europe*. Penguin Books Ltd, London, UK. p. 240.
- Steenis, C.G.G.J., S. Bloembergen and P.J. Eyma. 2006. *Flora*. Pradnya Paraamita, Jakarta, Indonesia.
- Undersander, D., M. Casler and D. Cosgrove. 1996. *Identifying Pasture Grasses*. Cooperative Extension Publication, University of Wisconsin-Extension, USA.
- Welsh, S.L., N.D. Atwood, S. Goodrich and L.C. Higgins. 2003. *A Utah Flora*. Brigham Young University. Provo, Utah, USA. p. 912.
- Windusari, Y., E. Nofyan, M. Kamal, L. Hanum and R. Pratama. 2014. Biophysics environmental condition of swamp buffalo (*Bubalus bubalis*) pampangan in district Rambutan, south Sumatra. *J. Biol Res-Thessalon.*, **19**(2): 78-81.



Ads by Google

Stop seeing this ad

Why this ad? ⓘ

Buffalo Bulletin

Country	Thailand - SIR Ranking of Thailand
Subject Area and Category	Agricultural and Biological Sciences Animal Science and Zoology Veterinary Veterinary (miscellaneous)
Publisher	International Buffalo Information Center
Publication type	Journals
ISSN	01256726
Coverage	2008-ongoing

9

H Index

[Join the conversation about this journal](#)

Fighting production stoppages

Free of charge until May 31st. ORDERFOX.com – the digital marketplace for the CNC industry

ORDERFOX AG

[LEARN MORE](#)

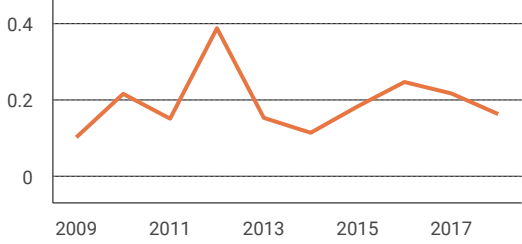
Quartiles



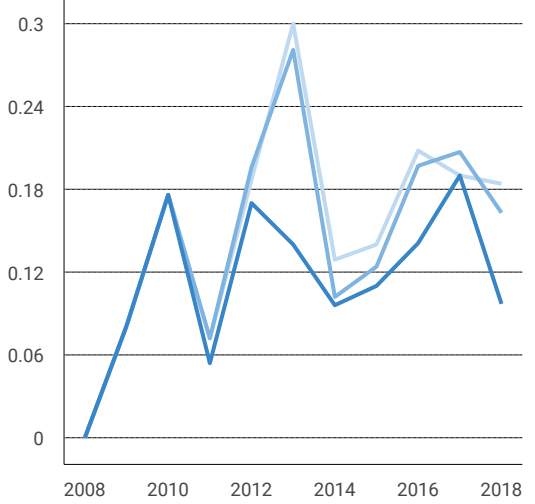
Animal Science and Zoology



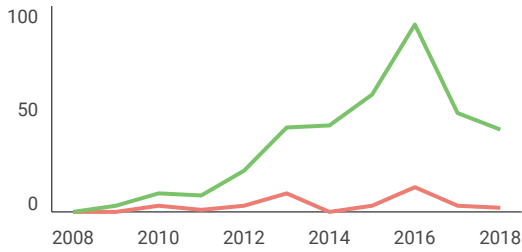
SJR



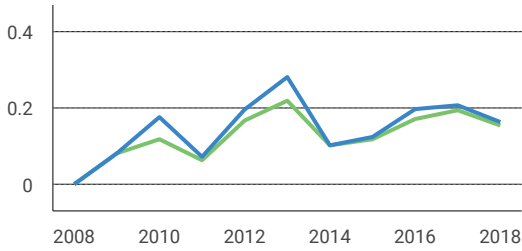
Citations per document



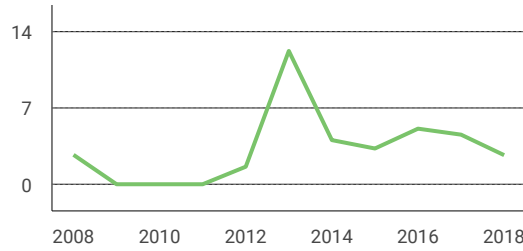
Total Cites Self-Cites



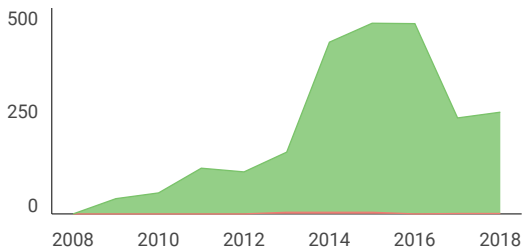
External Cites per Doc Cites per Doc



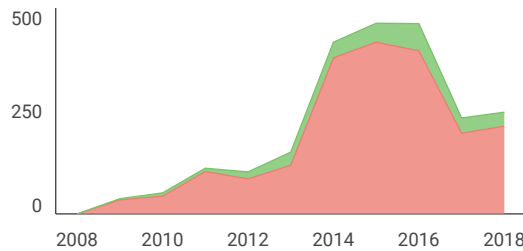
% International Collaboration



Citable documents Non-citable documents



Cited documents Uncited documents



Buffalo Bulletin

← Show this widget in your own website



Just copy the code below and paste within your html code:

```
<a href="https://www.scimagojr.com/journalsearch.php?q=19600157803&tip=sid&clean=0"
```

Leave a comment

Name

Email

(will not be published)

I'm not a robot reCAPTCHA
Privacy - Terms

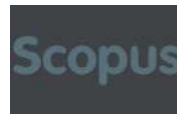
Submit

The users of Scimago Journal & Country Rank have the possibility to dialogue through comments linked to a specific journal. The purpose is to have a forum in which general doubts about the processes of publication in the journal, experiences and other issues derived from the publication of papers are resolved. For topics on particular articles, maintain the dialogue through the usual channels with your editor.

Developed by:

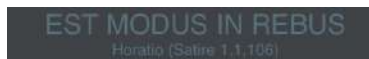


Powered by:

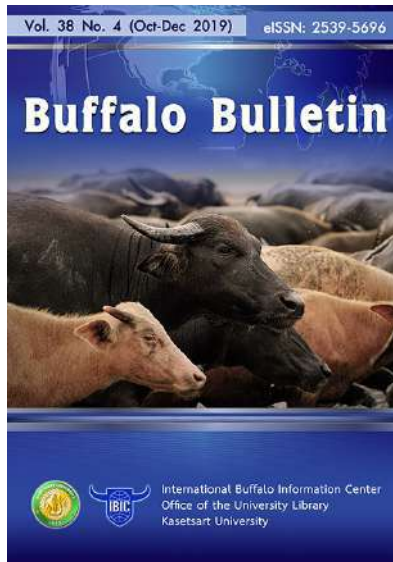


Follow us on @ScimagoJR

Scimago Lab, Copyright 2007-2020. Data Source: Scopus®



Home (<http://kuojs.lib.ku.ac.th/index.php/BufBu/index>)
/ Archives (<http://kuojs.lib.ku.ac.th/index.php/BufBu/issue/archive>)
/ Vol 38 No 4 (2019): October-December



(<http://kuojs.lib.ku.ac.th/index.php/BufBu/issue/view/186>)

6 **Published:** 2019-12-30

Short Communication

Laryngotracheoesophageal compression due to giant benign hyperplastic thyroid in a Jaffarabadi buffalo (<http://kuojs.lib.ku.ac.th/index.php/BufBu/article/view/925>)

Vineet Kumar, Shruti Vora, Foram Asodiya
673-680

PDF (<http://kuojs.lib.ku.ac.th/index.php/BufBu/article/view/925/1520>)

Review Article

Bovine herpes mammillitis (Gulwaddee) – a less known disease of cows and buffaloes in Pakistan (<http://kuojs.lib.ku.ac.th/index.php/BufBu/article/view/2432>)

Sehrish Firyal, Muhammad Muddassir Ali, Ghulam Muhammad, Muhammad Saqib, Immad Rashid,
Muhammad Zeeshan Tahir, Ali Raza Awan, Muhammad Wasim, Muhammad Tayyab
571-578

PDF (<http://kuojs.lib.ku.ac.th/index.php/BufBu/article/view/2432/1509>)

Original Article



(<http://kuojs.lib.ku.ac.th/index.php/BufBu/article/view/1574>)

Epidemiology, clinico-biochemistry and treatment modalities for the management in buffaloes (*Bubalus bubalis*)

(<http://kuojs.lib.ku.ac.th/index.php/BufE>

A. S. Jadhav, A. U. Bhikane, R. K. Jadhav, N. Kus B. Kanduri

579-592

PDF (<http://kuojs.lib.ku.ac.th/index.php/BufBu/a>

Histopathological study of endometritis in slaughtered buffaloes

(<http://kuojs.lib.ku.ac.th/index.php/BufBu/article/view/2428>)

⁶ A. R. Bhadaniya, M. C. Prasad, H. H. Savsani, V. A. Kalaria, D. T. Fefar, J. A. Chavda, R. J. Padodara
593-603

PDF (<http://kuojs.lib.ku.ac.th/index.php/BufBu/article/view/2428/1511>)

Preparation and evaluation of haemorrhagic septicaemia oil adjuvanted vaccine with a new ready to use oil adjuvant for cattle and buffaloes

(<http://kuojs.lib.ku.ac.th/index.php/BufBu/article/view/2466>)

W. Shahzad, B. Zameer, S. Naz, M. S. Hussain, A. Aziz, R. Munir, S. Hussain, Z. A. Qureshi, M. Iqbal
605-612

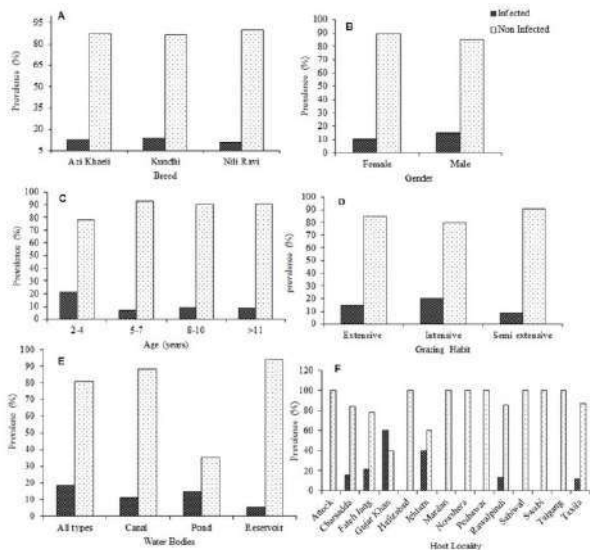
PDF (<http://kuojs.lib.ku.ac.th/index.php/BufBu/article/view/2466/1512>)

Prevalence and associated risk factors in buffaloes from Pakistan

(<http://kuojs.lib.ku.ac.th/index.php/BufE>

Muddassar Nazar, Kiran Afshan, Rubab Ali, Sabik
613-619

PDF (<http://kuojs.lib.ku.ac.th/index.php/BufBu/a>



(<http://kuojs.lib.ku.ac.th/index.php/BufBu/article/view/2198>)



Endemic ixodid tick infestation on buffalo (*Bubalus bubalis*) in east Godavari, Andhra Pradesh (<http://kuojs.lib.ku.ac.th/index.php/BufBu>)

S. Chennuru, K. Mounika, S. Krovvidi
621-627

PDF (<http://kuojs.lib.ku.ac.th/index.php/BufBu/art>)

(<http://kuojs.lib.ku.ac.th/index.php/BufBu/article/view/822>)

In silico characterization of Mx2 protein of buffalo (*Bubalus bubalis*) (<http://kuojs.lib.ku.ac.th/index.php/BufBu/article/view/1608>)

L. Buragohain, P. Borah, N. Goswami, R. Dutta
629-647

PDF (<http://kuojs.lib.ku.ac.th/index.php/BufBu/article/view/1608/1516>)

Efficacy of neostigmine and azithromycin in functional ileus

(<http://kuojs.lib.ku.ac.th/index.php/BufB>)

B. S. Reddy, G. Vijayakumar, G. A. Balasubraman
Kathirvel
649-652

PDF (<http://kuojs.lib.ku.ac.th/index.php/BufBu/ai>)



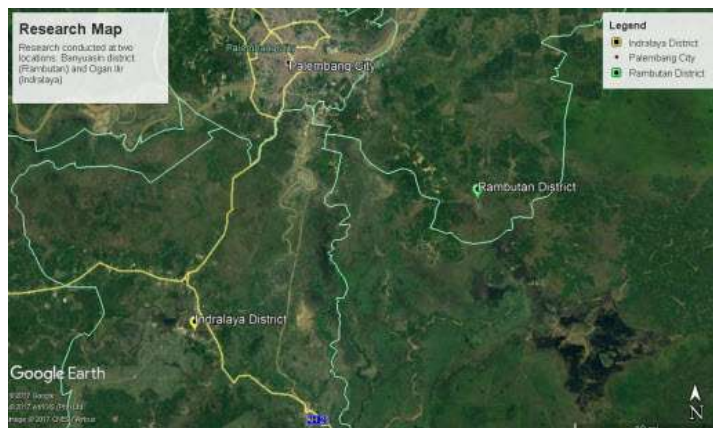
(<http://kuojs.lib.ku.ac.th/index.php/BufBu/article/view/1129>)

Performance of lactating buffaloes fed on de-oiled Mahua (*Madhuca indica*) seed cake in Chhattisgarh hills region of central India (<http://kuojs.lib.ku.ac.th/index.php/BufBu/article/view/862>)

Pramod Sharma, D. K. Singh, Siddarth Nayak, D. P. Sharma
653-657

6

PDF (<http://kuojs.lib.ku.ac.th/index.php/BufBu/article/view/862/1518>)



(<http://kuojs.lib.ku.ac.th/index.php/BufBu/article/view/938>)

A report of swamp buffalo Pampangan, (lydekker, 1913) habitat at Banyuasin (F Ogan Ilir (Indralaya) district, south Sumatra (<http://kuojs.lib.ku.ac.th/index.php/BufBu>

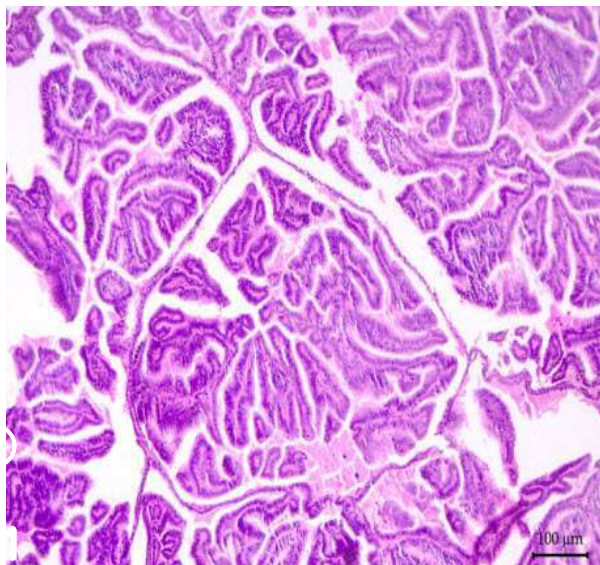
Rahmat Pratama, Yuanita Windusari, Laila Hanum, Setiawan
659-671

PDF (<http://kuojs.lib.ku.ac.th/index.php/BufBu/art>

Case Report

Congenital apocrine gland adenoma of calf and its surgical management (<http://kuojs.lib.ku.ac.th/index.php/BufBu>

R. K. Gosai, P. M. Chauhan, H. R. Patelia, R. S. Pa
681-685



PDF (<http://kuojs.lib.ku.ac.th/index.php/BufBu/art>)

(<http://kuojs.lib.ku.ac.th/index.php/BufBu/article/view/840>)

Per-vaginal delivery of a bull dog calf monster in a Murrah buffalo (<http://kuojs.lib.ku.ac.th/index.php/BufBu/article/view/897>)

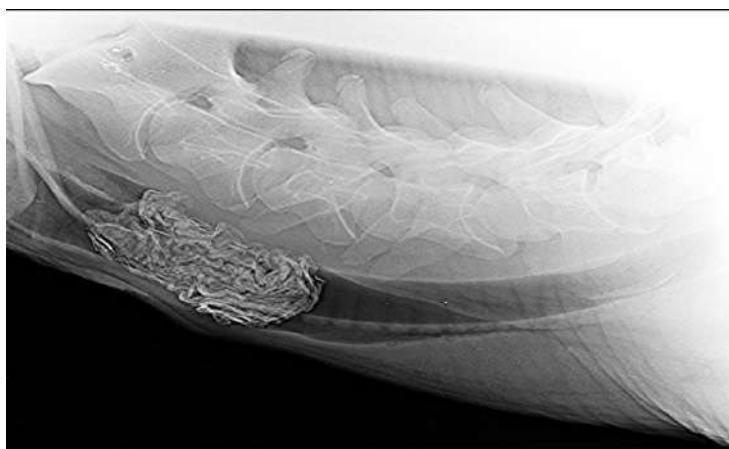
Ravi Dutt, Seema -, Subhash Chand Gahalot, Vinay Yadav, Gyan Singh
687-689

6 PDF (<http://kuojs.lib.ku.ac.th/index.php/BufBu/article/view/897/1521>)

Per-vaginal delivery of homozygous ascitic twin female fetuses in a primiparous Murrah buffalo: A rare case (<http://kuojs.lib.ku.ac.th/index.php/BufBu/article/view/898>)

Ravi Dutt, Gyan Singh, Anil Saini, Sandeep Kumar
691-693

PDF (<http://kuojs.lib.ku.ac.th/index.php/BufBu/article/view/898/1522>)



Surgico-therapeutic management of oesophageal obstruction in pregnant Marathwadi buffalo case

(<http://kuojs.lib.ku.ac.th/index.php/BufE>)

S. M. Agivale, A. U. Bhikane, C. L. Badgujar, W. A
695-699

PDF (<http://kuojs.lib.ku.ac.th/index.php/BufBu/a>)

(<http://kuojs.lib.ku.ac.th/index.php/BufBu/article/view/1676>)

Open Journal Systems (<http://pkp.sfu.ca/ojs/>)

Make a Submission (<http://kuojs.lib.ku.ac.th/index.php/BufBu/about/submissions>)

Information

For Readers (<http://kuojs.lib.ku.ac.th/index.php/BufBu/information/readers>)

For Authors (<http://kuojs.lib.ku.ac.th/index.php/BufBu/information/authors>)

For Librarians (<http://kuojs.lib.ku.ac.th/index.php/BufBu/information/librarians>)

SELECT AN ISSUE FROM THE ARCHIVE (<http://bit.ly/2BxhQEg>)

(<https://goo.gl/iVE4uN>) **MOST CITED ARTICLES** NEW! (<http://bit.ly/2WszQZ3>)

(<https://goo.gl/J6xSkS>) **E-JOURNAL**
(<http://kuojs.lib.ku.ac.th/index.php/BufBu/eJournal>)

Indexed and Abstract:



6

Current Issue

 (<http://kuojs.lib.ku.ac.th/index.php/BufBu/gateway/plugin/WebFeedGatewayPlugin/atom>)

 (<http://kuojs.lib.ku.ac.th/index.php/BufBu/gateway/plugin/WebFeedGatewayPlugin/rss2>)

 (<http://kuojs.lib.ku.ac.th/index.php/BufBu/gateway/plugin/WebFeedGatewayPlugin/rss>)

International Buffalo Information Center
Office of the University Library
6 Kasetsart University
P.O. BOX 1084, Bangkok 10903
THAILAND

powered by OJS | Open Journal Systems
(<http://kuojs.lib.ku.ac.th/index.php/BufBu/about/aboutThisPublishingSystem>)

PKP | PUBLIC KNOWLEDGE PROJECT (<http://pkp.sfu.ca/ojs>)

Recommended for you

Test-day genetic analysis of Murrah buffalo sires for milk production | Bu...
kuojs.lib.ku.ac.th

TLR-4 gene polymorphism in Indian Murrah buffaloes (Buba...
kuojs.lib.ku.ac.th

Studies on changes in hemato-biochemical and enzymatic profile in pos...
kuojs.lib.ku.ac.th

AddThis (<https://www.addthis.com/website-tools/overview?>)



Vol. 38 No. 4 (Oct-Dec 2019)

eISSN: 2539-5696

Buffalo Bulletin



International Buffalo Information Center
Office of the University Library
Kasetsart University

Editorial Team

Advisory Board

Prof. Dr. Charan Chantalakhana, Thailand

Prof. Dr. John Lindsay Falvey, Faculty of Veterinary and Agricultural Science, University of Melbourne, Australia

Prof. Dr. Metha Wanapat, Department of Animal Science, Faculty of Agriculture, Khon Kaen University, Thailand

Mr. Antonio Borghese, International Buffalo Federation, Italy

Dr. Aree Thunkijjanukij, International Buffalo Information Center, Office of the University Library, Kasetsart University, Thailand

Miss Supanee Hongthong, International Buffalo Information Center, Office of the University Library, Kasetsart University, Thailand

Editorial Member

Dr. Pakapan Skunmun, Thailand

Dr. Kalaya Bunyanuwat, Department of Livestock, Thailand

Prof. Dr. Federico Infascelli, Dipartimento di Scienze Zootecniche e Ispezione degli alimenti, Faculty of Veterinary Medicine, University of Naples Federico II, Naples, Italy

Dr. Rafat Al Jassim, Centre for Animal Science, Queensland Alliance for Agriculture and Food Innovation (QAAFI), The University of Queensland, Australia

Prof. Dr. Nguyen Van Thu, Dept. of Animal Sciences, Fac. of Agric. & Appl. Biology, Can Tho University, Vietnam

Prof. K. Sarjan Rao, College of Veterinary Science Rajendranagar, Department of Livestock Production and Management, India

Prof. Dr. Masroor Ellahi Babar, Virtual University of Pakistan. M.A. Jinnah campus, Pakistan

Assist. Dr. Asif Nadeem, Institute of Biochemistry & Biotechnology, University of Veterinary and Animal Sciences, Pakistan

Prof. Dr. Raul Franzolin, FZEA/USP, Departamento de Zootecnia, Universidade de São Paulo, Brazil

Editor

Dr. Sunpetch Sophon, Thailand

Journal Manager

Mr. Chalermdej Taterian

Miss Kanchana Anuphan

Assistant Journal Manager

Miss Jirawadee Wiratto, Thailand

Open Journal Systems (<http://pkp.sfu.ca/ojs/>)

Make a Submission (<http://kuojs.lib.ku.ac.th/index.php/BufBu/about/submissions>)

Information
For Readers (http://kuojs.lib.ku.ac.th/index.php/BufBu/information/readers)
For Authors (http://kuojs.lib.ku.ac.th/index.php/BufBu/information/authors)
For Librarians (http://kuojs.lib.ku.ac.th/index.php/BufBu/information/librarians)

SELECT AN ISSUE FROM THE ARCHIVE (<http://bit.ly/2BxhQEg>)

(<https://goo.gl/iVE4uN>) **MOST CITED ARTICLES** NEW! (<http://bit.ly/2WszQZ3>)

(<https://goo.gl/J6xSkS>) **E-JOURNAL**
(<http://kuojs.lib.ku.ac.th/index.php/BufBu/eJournal>)

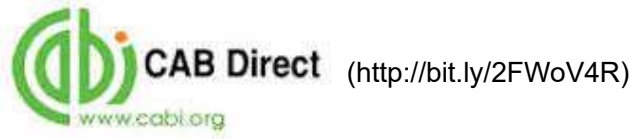
Indexed and Abstract:

 **TCI** (<http://bit.ly/2B6wHVW>)
ศูนย์ดัชนีการอ้างอิงวารสารไทย
Thai Journal Citation Index Centre

 **ASEAN CITATION INDEX** (<http://bit.ly/2DF1iLL>)

 **Clarivate Analytics** (<http://bit.ly/2WqpxFa>)

 **Scopus** (<https://www.scopus.com/search/form.uri?display=basic>)



Current Issue

 (http://kuojs.lib.ku.ac.th/index.php/BufBu/gateway/plugin/WebFeedGatewayPlugin/atom)

 (http://kuojs.lib.ku.ac.th/index.php/BufBu/gateway/plugin/WebFeedGatewayPlugin/rss2)

 (http://kuojs.lib.ku.ac.th/index.php/BufBu/gateway/plugin/WebFeedGatewayPlugin/rss)

1

International Buffalo Information Center
Office of the University Library
Kasetsart University
P.O. BOX 1084, Bangkok 10903
THAILAND

powered by OJS | Open Journal Systems
(http://kuojs.lib.ku.ac.th/index.php/BufBu/about/aboutThisPublishingSystem)

PKP | PUBLIC KNOWLEDGE PROJECT (http://pkp.sfu.ca/ojs)

Recommended for you

Management of post partum complete eversion of uterus in gr...
kuojs.lib.ku.ac.th

Management of hydroallantois in Mehsana buffaloes - T...
kuojs.lib.ku.ac.th

Developing feeding module for increasing milk production in Murr...
kuojs.lib.ku.ac.th



Home (<http://kuojs.lib.ku.ac.th/index.php/BufBu/index>) / About the Journal

About the Journal

Buffalo Bulletin is published quarterly in January-March, April-June, July-September and October-December. Contributions on any aspect of research or development, progress reports of projects and news on buffalo will be considered for publication in the bulletin.

Buffalo Bulletin has been selected for coverage in Thomson Reuters products and custom information services. Beginning with Vol. 27(1) 2008, this publication will be indexed and abstracted in the following:

- Science Citation Index Expanded (also known as SciSearch ®)
- Journal Citation Reports/Science Edition

Start year: **1982**

Language: **English**

Publication fee: **Free of Charge**

Free access: **Immediate**

Issues per year: **4 Issues (Quarterly)**

² Impact Factor (WOS) 2018: **0.096 (Q4)**

SJR (SCOPUS) 2018: **0.163 (Q4)**

ISSN : 0125-6726

eISSN : 2539-5696

Open Journal Systems (<http://pkp.sfu.ca/ojs/>)

Make a Submission (<http://kuojs.lib.ku.ac.th/index.php/BufBu/about/submissions>)

Information

For Readers (<http://kuojs.lib.ku.ac.th/index.php/BufBu/information/readers>)

For Authors (<http://kuojs.lib.ku.ac.th/index.php/BufBu/information/authors>)

For Librarians (<http://kuojs.lib.ku.ac.th/index.php/BufBu/information/librarians>)

SELECT AN ISSUE FROM THE ARCHIVE (<http://bit.ly/2BxhQEg>)

(<https://goo.gl/iVE4uN>) MOST CITED ARTICLES NEW! (<http://bit.ly/2WszQZ3>)

(<https://goo.gl/J6xSkS>)

E-JOURNAL

(<http://kuojs.lib.ku.ac.th/index.php/BufBu/eJournal>)

Indexed and Abstract:



(<http://bit.ly/2B6wHVW>)



ASEAN CITATION INDEX (<http://bit.ly/2DF1iLL>)



(<http://bit.ly/2WqpxFa>)



(<https://www.scopus.com/search/form.uri?display=basic>)



CAB Direct (<http://bit.ly/2FWoV4R>)



(<http://bit.ly/2t0LhKI>)

2

Current Issue



(<http://kuojs.lib.ku.ac.th/index.php/BufBu/gateway/plugin/WebFeedGatewayPlugin/atom>)



(<http://kuojs.lib.ku.ac.th/index.php/BufBu/gateway/plugin/WebFeedGatewayPlugin/rss2>)



(<http://kuojs.lib.ku.ac.th/index.php/BufBu/gateway/plugin/WebFeedGatewayPlugin/rss>)

International Buffalo Information Center
Office of the University Library
Kasetsart University
P.O. BOX 1084, Bangkok 10903
THAILAND

powered by OJS | Open Journal Systems

(<http://kuojs.lib.ku.ac.th/index.php/BufBu/about/aboutThisPublishingSystem>)

PKP | PUBLIC KNOWLEDGE PROJECT (<http://pkp.sfu.ca/ojs>)

Recommended for you

Open Journal Systems |
Buffalo Bulletin
(<https://v1.addthis.com/liv>
kuojs.lib.ku.ac.th

Submissions | Buffalo
Bulletin
(<https://v1.addthis.com/liv>
kuojs.lib.ku.ac.th

Management of post
partum complete
eversion of uterus in gr...
kuojs.lib.ku.ac.th



Home (<http://kuojs.lib.ku.ac.th/index.php/BufBu/index>) / Contact

International Buffalo Information Center

Office of the University Library

Kasetsart University

P.O. BOX 1084, Bangkok 10903

THAILAND

Principal Contact

Kanchana Anupun

Journal Manager

Phone 66-2-9428616 ext. 344

kanchana.a@ku.th (<mailto:kanchana.a@ku.th>)

Support Contact

4 Chalermdej Taterian

Phone 66-2-9428616 ext. 344

chalermdej.t@ku.th (<mailto:chalermdej.t@ku.th>)

Open Journal Systems (<http://pkp.sfu.ca/ojs/>)

Make a Submission (<http://kuojs.lib.ku.ac.th/index.php/BufBu/about/submissions>)

Information

For Readers (<http://kuojs.lib.ku.ac.th/index.php/BufBu/information/readers>)

For Authors (<http://kuojs.lib.ku.ac.th/index.php/BufBu/information/authors>)

For Librarians (<http://kuojs.lib.ku.ac.th/index.php/BufBu/information/librarians>)

SELECT AN ISSUE FROM THE ARCHIVE (<http://bit.ly/2BxhQEg>)

(<https://goo.gl/iVE4uN>)

MOST CITED ARTICLES NEW!

(<http://bit.ly/2WszQZ3>)

(<https://goo.gl/J6xSkS>)

E-JOURNAL

(<http://kuojs.lib.ku.ac.th/index.php/BufBu/eJournal>)

Indexed and Abstract:



(<http://bit.ly/2B6wHVW>)



ASEAN CITATION INDEX (<http://bit.ly/2DF1iLL>)



(<http://bit.ly/2WqpxFa>)



(<https://www.scopus.com/search/form.uri?display=basic>)



CAB Direct (<http://bit.ly/2FWoV4R>)

www.cabi.org



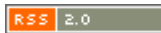
(<http://bit.ly/2t0LhKI>)

4

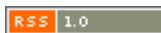
Current Issue



(<http://kuojs.lib.ku.ac.th/index.php/BufBu/gateway/plugin/WebFeedGatewayPlugin/atom>)



(<http://kuojs.lib.ku.ac.th/index.php/BufBu/gateway/plugin/WebFeedGatewayPlugin/rss2>)



(<http://kuojs.lib.ku.ac.th/index.php/BufBu/gateway/plugin/WebFeedGatewayPlugin/rss>)

International Buffalo Information Center
Office of the University Library
Kasetsart University

P.O. BOX 1084, Bangkok 10903
THAILAND

powered by OJS | Open Journal Systems

(<http://kuojs.lib.ku.ac.th/index.php/BufBu/about/aboutThisPublishingSystem>)

PKP | PUBLIC KNOWLEDGE PROJECT (<http://pkp.sfu.ca/ojs>)

Recommended for you

Developing feeding module for increasing milk production in Murr...
kuojs.lib.ku.ac.th

Comparative therapeutic efficacy of homeopathic complex, herbal extract...
kuojs.lib.ku.ac.th

Announcements | Buffalo Bulletin
(<https://v1.addthis.com/liv>)
kuojs.lib.ku.ac.th

AddThis (<https://www.addthis.com/website-tools/overview?>)



Editorial Team

Advisory Board

Prof. Dr. Charan Chantalakhana, Thailand

Prof. Dr. John Lindsay Falvey, Faculty of Veterinary and Agricultural Science, University of Melbourne, Australia

Prof. Dr. Metha Wanapat, Department of Animal Science, Faculty of Agriculture, Khon Kaen University, Thailand

Mr. Antonio Borghese, International Buffalo Federation, Italy

Dr. Aree Thunkijjanukij, International Buffalo Information Center, Office of the University Library, Kasetsart University, Thailand

Miss Supanee Hongthong, International Buffalo Information Center, Office of the University Library, Kasetsart University, Thailand

Editorial Member

Dr. Pakapan Skunmun, Thailand

Dr. Kalaya Bunyanuwat, Department of Livestock, Thailand

Prof. Dr. Federico Infascelli, Dipartimento di Scienze Zootecniche e Ispezione degli alimenti, Faculty of Veterinary Medicine, University of Naples Federico II, Naples, Italy

Dr. Rafat Al Jassim, Centre for Animal Science, Queensland Alliance for Agriculture and Food Innovation (QAAFI), The University of Queensland, Australia

Prof. Dr. Nguyen Van Thu, Dept. of Animal Sciences, Fac. of Agric. & Appl. Biology, Can Tho University, Vietnam

Prof. K. Sarjan Rao, College of Veterinary Science Rajendranagar, Department of Livestock Production and Management, India

Prof. Dr. Masroor Ellahi Babar, Virtual University of Pakistan. M.A. Jinnah campus, Pakistan

Assist. Dr. Asif Nadeem, Institute of Biochemistry & Biotechnology, University of Veterinary and Animal Sciences, Pakistan

Prof. Dr. Raul Franzolin, FZEA/USP, Departamento de Zootecnia, Universidade de São Paulo, Brazil

Editor

Dr. Sunpetch Sophon, Thailand

Journal Manager

Mr. Chalermdej Taterian

Miss Kanchana Anuphan

Assistant Journal Manager

Miss Jirawadee Wiratto, Thailand

Open Journal Systems (<http://pkp.sfu.ca/ojs/>)

Make a Submission (<http://kuojs.lib.ku.ac.th/index.php/BufBu/about/submissions>)

Information
For Readers (http://kuojs.lib.ku.ac.th/index.php/BufBu/information/readers)
For Authors (http://kuojs.lib.ku.ac.th/index.php/BufBu/information/authors)
For Librarians (http://kuojs.lib.ku.ac.th/index.php/BufBu/information/librarians)

1 **SELECT AN ISSUE FROM THE ARCHIVE** (<http://bit.ly/2BxhQEg>)

(<https://goo.gl/iVE4uN>) **MOST CITED ARTICLES** NEW! (<http://bit.ly/2WszQZ3>)

(<https://goo.gl/J6xSkS>) **E-JOURNAL**
(<http://kuojs.lib.ku.ac.th/index.php/BufBu/eJournal>)

Indexed and Abstract:

 **TCI** (<http://bit.ly/2B6wHVW>)
ศูนย์ดัชนีการอ้างอิงวารสารไทย
Thai Journal Citation Index Centre

 **ASEAN CITATION INDEX** (<http://bit.ly/2DF1iLL>)

 **Clarivate Analytics** (<http://bit.ly/2WqpxFa>)

 **Scopus** (<https://www.scopus.com/search/form.uri?display=basic>)



Current Issue

 (http://kuojs.lib.ku.ac.th/index.php/BufBu/gateway/plugin/WebFeedGatewayPlugin/atom)

 (http://kuojs.lib.ku.ac.th/index.php/BufBu/gateway/plugin/WebFeedGatewayPlugin/rss2)

 (http://kuojs.lib.ku.ac.th/index.php/BufBu/gateway/plugin/WebFeedGatewayPlugin/rss)

1

International Buffalo Information Center
 Office of the University Library
 Kasetsart University
 P.O. BOX 1084, Bangkok 10903
 THAILAND

powered by OJS | Open Journal Systems
 (http://kuojs.lib.ku.ac.th/index.php/BufBu/about/aboutThisPublishingSystem)

PKP | PUBLIC KNOWLEDGE PROJECT (http://pkp.sfu.ca/ojs)

Recommended for you

Molecular diagnosis of hemorrhagic septicaemia in a Murrah buffalo and...
 kuojs.lib.ku.ac.th

Study the responses of progesterone administration on resu...
 kuojs.lib.ku.ac.th

Comparative efficacy of different treatment protocols in therapeutic...
 kuojs.lib.ku.ac.th



REPORT OF SWAMP BUFFALO
PAMPANGAN, BUBALUS BUBALIS
(LYDEKKER, 1913) HABITAT AT
BANYUASIN (RAMBUTAN) AND OGAN
ILIR (INDRALAYA) DISTRICT, SOUTH
SUMATRA, INDONESIA

By Arum Setiawan

REPORT OF SWAMP BUFFALO PAMPANGAN, *BUBALUS BUBALIS*
(LYDEKKER, 1913) HABITAT AT BANYUASIN (RAMBUTAN) AND OGAN ILIR
(INDRALAYA) DISTRICT, SOUTH SUMATRA, INDONESIA

Rahmat Pratama, Yuanita Windusari*, Laila Hanum, Indra Yustian and Arum Setiawan

ABSTRACT

Habitat analysis, include biophysics environmental conditions of swamp buffalo (*Bubalus bubalis*) has been conducted in June until December 2017 in Rambutan (Banyuasin) and Ogan Ilir (Indralaya) district, south Sumatra and the laboratory of Animal Physiology, Department of Biology, Faculty of Mathematics and Natural Sciences, University of Sriwijaya, Indralaya. The purpose of research is to know swamp buffalo habitat characteristics at the district of Rambutan (Banyuasin) and Indralaya (Ogan Ilir) by physical, chemical, soil and vegetation conditions in the habitat of buffalo. The sampling method of buffalo was used purposive sampling method whereas vegetation sampling using the quadrant method or plot. Data analysis techniques used are in qualitative and quantitative. The data is then presented in the form of tables and diagrams and narratives to interpret the data. Based on identification and field observations of vegetation conditions, Rambutan vegetation was consist of 15 species and Indralaya vegetation was consist of 9 species for swamp buffalo food. Temperature inside and outside of cage in Indralaya is 22.3 to 31.3°C while temperature in Rambutan is 23.2 to 32.8°C.

Potential of hydrogen soil is 5.10 to 5.60

and always inundated by water. It can be concluded that the form of lowland biophysics environmental. Conditions of swamp buffalo dominated by grasses belonging to the family of Cyperaceae, Graminae, Fabaceae and Poaceae as the main source of food, while the state of the temperature is very supportive for buffalo habitat.

Keywords: *Bubalus bubalis*, buffalo, Pampangan swamp buffalo, habitat, vegetation, temperature, soil, environmental

INTRODUCTION

Swamp buffalo (*Bubalus bubalis*) in Rambutan and Indralaya district is one of the original buffalo varieties and the richness of germplasm of south Sumatra. In 2010, the Government of Indonesia through the Director General of PKH at that time supported by experts from Balitbangtan-Kementan and teachers of Kemendikbud start a new level in the recognition of buffalo clumps in Indonesia as the original livestock owned by Indonesia. The results have been established seven clumps of buffalo cattle Indonesia namely buffalo Pampangan and Simelue (*Bubalus bubalis sumateranensis*). Its distribution covers only south Sumatra and one of the largest distributions in

district of Pampangan (Ogan Komering Ilir: 4.799 buffaloes), Rambutan (Banyuasin: 1.623 buffaloes) and Indralaya (Ogan Ilir: 2.477 buffaloes) (BPS, 2015). So that this buffalo is often referred to as buffalo Pampangan.

Reported by Animal Husbandry Department Ogan Komering Ilir (2012), general characteristics of buffalo Pampangan in Rambutan, Indralaya and Pampangan or other areas nearby that has a body shape tall and big, black leather, head and ears with long hair, short horns circular heading back down, and then to direction in a circular spiral shape, elbow-shaped body, slender leads such as dairy cow type, udder developed good and symmetrical, and calm temperament.

Pampangan swamp buffaloes located in the district of Rambutan spend their lives and live in the swamp area of Rambutan which is a customary land that has a land area of approximately 1.200 hectares in Rambutan (Animal Husbandry Department Ogan Komering Ilir, 2012). and 700 hectares in Indralaya (Animal Husbandry Department Banyuasin, 2014). This area had not increased in size and experienced a reduction in land area, but the livestock population is always increasing, causing an increase in population without the provision of feed in the area where the buffalo foraging.

Along with increasing demand for meat, original variant of swamp buffalo in Pampangan, Rambutan and Indralaya district began to be sidelined and maintained along with buffalo swamp taken from other regions in Indonesia such as Lampung. Conditions that lead to the original variant buffalo population in sub Rambutan Pampangan dwindling. Understanding of the buffalo habitat will can give information about what the buffalo needs in it's life. One of them is the area of land needed and how much the carrying

capacity of the land for buffalo breeding and can support the fulfillment of buffalo nutrients. This information is important in the effort to condition the environment and design the management in accordance with the needs of buffalo so it is expected to increase the population of Pampangan swamp buffaloes in the Rambutan and Indralaya district.

MATERIALS AND METHODS

The tools used are stationery, notebook, GPS, camera, questionnaire, paper label, meter roll, pH meter water, soil tester, rope, and thermohygrometer. The materials needed are buffalo water samples and soil samples for analysis in the laboratory.

Method of sampling buffalo

Method used to take samples of buffaloes observed were purposive sampling method. Buffalo samples were determined by selecting samples among buffalo populations in accordance with the desired researchers with intent and purpose that the sample can represent the characteristics of the population of buffalo that has been known previously. Technique of collecting data by direct observation by seeing and recording directly condition of swamp buffalo habitat in district of Rambutan and Indralaya. The research data will be tabulated and analyzed descriptively to get buffalo habitat data.

Site determination and sampling method observation analysis of vegetation potential of buffalo feed

A. Sampling location

Based on location survey results, the

location of sampling is determined by purposive random sampling method. The sampling site consists of 4 observation sites based on different types of vegetation and often passed to buffalo feeding so that it can represent the type of vegetation in the buffalo habitat area (Figure 1a).

B. Sampling method

Sampling technique using quadrat sampling technique (Kusmana, 1997). Sampling by making 4 transects size 100x100 meter placed at each location. Making this plot to know the index of dominance of the types of vegetation that live in buffalo habitats that have the potential as buffalo feed. Potential vegetation types as a feed is usually from species of grasses and herbs. Because of grasses were main source of feed for survival of buffalo. The measured data was recorded in the tally sheet. In this survey activity used the growth criteria of herbs beginning sprouts up to <1.5 meters tall.

Observation of physical factors (temperature and humidity)

Measurement of temperature and humidity was used to determine the amount of temperature and humidity in swamp buffalo habitat in the district of Rambutan and Indaralaya so that the conclusions can be drawn on the survival of buffalo. This temperature and humidity measurement is carried out inside and outside the cage at a distance of 1 km from the cage. Temperature and humidity data is taken every once a week and during the month of June to August. Measurement of temperature and humidity by using thermohygrometer is by putting thermohygrometer in place to be measured humidity then wait and read the scale. Land measurements are also done inside and outside the cage using soil tester

Observation of soil pH and mineral content

Soil pH measurement was used to determine the value of soil pH from Pampangan swamp buffalo habitat in Kecamatan Rambutan so that it can be drawn conclusion of the magnitude of soil pH and its effect on the survival of buffalo by using tool that was Soil Tester that is by plugged soil pH into the soil to be measured soil pH then soil samples were analyzed for its contents.

Supporting data collection

Supporting data collection was done to support the data that have been obtained, the data obtained will be presented in the form of narration. The collection of supporting data is using interview method, field observation and documentation every thing done in every observation.

A. Interview

Data collection is done by direct interviews of people who have buffalo cattle to obtain information about buffalo. The questions asked are:

1. Where does the buffalo feed come from?
2. Which areas are often crossed by buffalo?
3. What is the daily activity and condition of the buffalo habitat?
4. What kinds of grass are buffalo eating?

B. GPS data

GPS data was used to determine the coordinates of latitude, longitude, with the system of writing Minutes Second Degree (DMS) from the observed location.

C. Documentation

Documentation is performed as authentic proof of any observations that have been made.

Samples of Pampangan swamp buffaloes in Rambutan and Indralaya were observed and each observation sampling activity was documented using a digital camera.

Identification of potential feed vegetation

Identification was done by observing and carried out morphological recordings and vegetation characteristics that have the potential to feed buffalo. Documentation was performed using the camera on each potential vegetation of feed found in each plot. Identification of vegetation by using the book of identification of the book essay Rose, 1989; Steenis *et al.*, 2006; Banner, 2011; Brown, 1979; Undersander, 1996; Welsh, 2003.

Data analysis

Data obtained from observations will be presented in qualitative and quantitative.

A. Qualitatively

Data obtained from the results of the recording of the condition of swamp buffalo habitat in Rambutan and Indralaya subdistrict were either the result of the interview, observation of physical factors including temperature and humidity as well as observation of soil pH obtained and mineral soil content is described, and some data presented in the form of tables and drawings in accordance with the results obtained.

B. Quantitatively

The data obtained from observation of Vegetation Analysis of the potential of feed is calculated quantity quantitative value of vegetation parameter, especially in determining index of important value According Kusmana (1997), done with the following formula:

$$IV = KR+FR$$

Furthermore, Shannon's index (Shannon's index) is used to determine the diversity of plant species. According Odum (1994) with the following formula:

$$H' = - \sum (ni/N) \log (ni/N) \text{ or } - \sum Pi \log Pi$$

where H' was the index of Shannon's diversity, ni was the value of importance for each species, N is the total kepentigan value and Pi is the probability of interest for each species that is ni/N . According to Barbour *et al.* (1987) that the H' values range from 0 to 7 with criteria (a) 0 to 2 being low, (b) 2 to 3 are moderate, and (c) 3 or more are high.

RESULTS AND DISCUSSION

Environmental condition of swamp buffalo habitat

Maintenance of buffalo in Rambutan and Indralaya is one of the main efforts of the population there, apart from agriculture such as rubber, palm and cultivation. This livestock business is done by the people of Rambutan and Indralaya districts on the swamp land. Business buffalo cattle carried out by removing buffalo from the cage in the morning in the swamp land and lead back in the afternoon. The environment of buffalo habitats in Rambutan and Indralaya has source of feed derived from wild grass vegetation in pastures where buffalo foraging. There are no breeders who provide additional feed or processing of animal feed. The availability of feed and water availability is closely related to seasonal changes occurring in the Rambutan and Indralaya regions. This greatly

affects the buffalo to wallow and drink, the source of water in the dry season comes from streams flowing along the buffalo habitat.

Environmental conditions of swamps form made this area very difficult to find a source of clean water for the needs of buffalo breeders, to get a source of clean water buffalo breeders must travel a distance of ± 300 m (Windusari *et al.*, 2014). In the dry season, the river is very useful for buffalo bath and wallow because in this season almost all the dry puddles. The water pH conditions at some sampling points showed that water content was acid with pH value of $3 < \text{pH} < 4$. Rainfall greatly affects the water content and the fibers contained in the growing grass. forage that grows in conditions of considerable rain and high humidity will contain more water, in addition to forage more nutritious in the rainy season than in the dry season (Figure 2 to Figure 7).

Temperature and humidity

Based on observation and temperature measurement by using thermohygrometer in 2 locations that is inside and outside the cage as far as 1 km to saw the difference of both, got data of temperature result which increase its temperature during afternoon and temperature decrease during evening until morning. This temperature is strongly influenced by the weather in the rainy season and dry season. Temperature in buffalo habitat area (*Bubalus bubalis*) Rambutan and Indralaya could be seen in Table 1 and Table 2 below.

Average temperature (June to August) in Rambutan for cage inside was 21.3 ± 33.6 and outside the enclosure ranged between $22.6 \pm 39.7^\circ\text{C}$ while the average temperature in Indralaya for in a cage that was $21.5 \pm 38.4^\circ\text{C}$ and outside the cage ranges $22.1 \pm 38.8^\circ\text{C}$. The temperature indicates that the habitat was very suitable for swamp

buffalo breeding. Normal temperature for swamp buffalo was 38.4°C (Fahimuddin, 1975) and in temperature (27.47°C) corresponding to the normal rectal temperature of 38.33°C as derived by the linear regression equation $ST = 9.343 \times RT - 330.7$ ($R^2 = 0.79$) (Kumar and Kumar, 2013). According to Parakkasi (1995), temperature and humidity greatly affect mechanism of regulating temperature of buffalo body, heat expenditure, for example by sweating or through respiration will be faster.

Soil pH, moisture and mineral content

Based on measurements of soil pH on Rambutan and Indralaya showed values ranging between $5.10 < \text{pH} > 5.60$, this shows that soil pH is acidic. Poerwowidodo (1991), cause soil acidity was H^+ and AL^{3+} ion which are in soil solution and absorption complex. Both of these cations affect acidity of soil in different ways. The difference was related to the source and nature of charge that absorbs the cations. Meanwhile, according to Michael (1991), soil pH value was good for plant growth that is between 5.0 to 8.4 and soil fertility bacteria were very much found in soil pH between 6.0 dan 8.2. Generally, plants can withstand ups and downs of pH in the range that was not too extreme Rao (1994), carbon (C), nitrogen (N), kalium (K), calcium elements (Ca), and magnesium (Mg) were macro elements needed for large growth grasses so that Rambutan and Indralaya were suitable places for swamp buffalo development.

Food vegetation conditions for habitat buffalo (*Bubalus bubalis*) of Rambutan and Indralaya

Based on identification and field observations of vegetation conditions, Rambutan vegetation was consist of 15 species that includes *Andropogon ischaemum*, *Brachiaria decumbens*, *Digitaria sanguinalis*, *Echinochloa stagnina*,

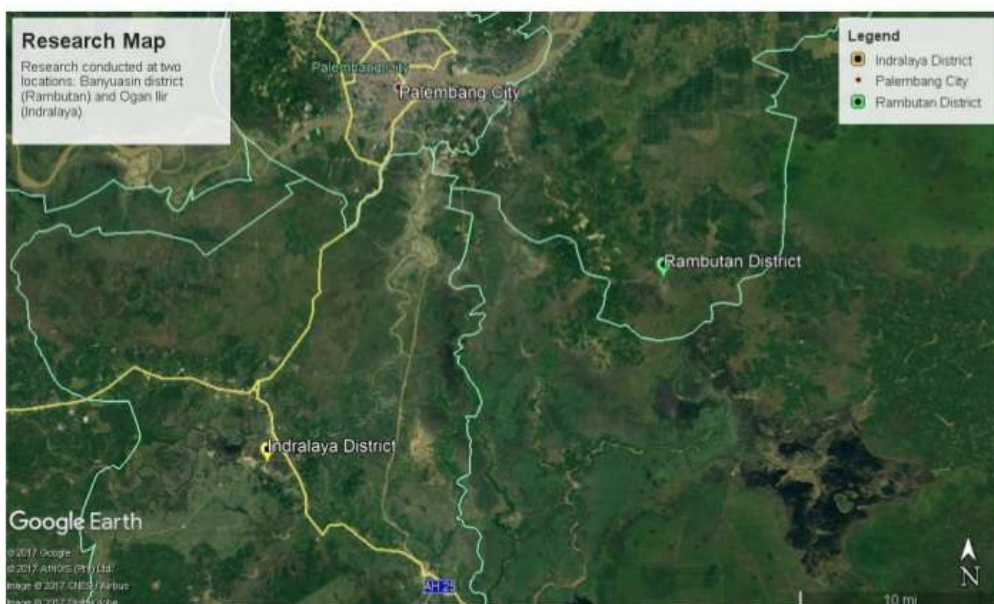


Figure 1. Research map: research conducted at two locations: Banyuasin district (Rambutan) and Ogan Ilir (Indralaya).



Figure 2. Puddles conditions during dry season.



Figure 3. Swamp buffalo much time to soak.



Figure 4. Buffalo condition in Rambutan district when looking for food.



Figure 5. Condition of buffalo habitat in Indralaya district.



Figure 6. Cage buffalo in Indralaya district no roof cage.



Figure 7. Buffalo cage in Rambutan has cage roof.

Tabel 1. The temperature conditions of cage inside and outside in Rambutan district.

Temperature	Observation	Cage inside	Cage outside
June	First week (June 01 2017)	22.1-29.4°C	23.3-29.8°C
	Second week (June 08 2017)	23.5-27.5°C	24.2-28.4°C
	Third week (June 15 2017)	25.6-28.6°C	26.3-29.2°C
	Fourth week (June 22 2017)	22.3-30.3°C	23.5-31.4°C
	Fifth week (June 29 2017)	24.7-31.7°C	25.2-36.5°C
July	First week (July 06 2017)	25.3-29.6°C	26.5-29.8°C
	Second week (July 13 2017)	21.3-27.1°C	22.6-28.7°C
	Third week (July 20 2017)	26.1-33.6°C	26.2-34.3°C
	Fourth week (July 27 2017)	23.4-28.6°C	24.4-28.9°C
August	First week (August 02 2017)	27.6-30.2°C	27.5-39.7°C
	Second week (August 09 2017)	21.9-31.7°C	22.7-32.5°C
	Third week (August 16 2017)	24.3-30.2°C	25.2-33.1°C
	Fourth week (August 23 2017)	26.1-29.8°C	26.5-30.3°C
	Fifth week (August 30 2017)	23.3-30.5°C	24.2-34.5°C

Table 2. The temperature conditions of cage inside and outside in Indralaya district.

Daily temperature	Observation	Average temperature in cage inside	Average temperature in cage outside
June	First week (June 02 2017)	23.2-33.4°C	23.8-33.9°C
	Second week (June 09 2017)	22.6-29.8°C	23.2-30.1°C
	Third week (June 16 2017)	25.2-35.2°C	25.8-35.4°C
	Fourth week (June 23 2017)	23.4-33.2°C	23.9-33.5°C
	Fifth week (June 30 2017)	21.5-28.5°C	22.1-29.6°C
July	First week (July 07 2017)	24.1-28.4°C	24.9-32.2°C
	Second week (July 14 2017)	22.4-31.2°C	22.8-31.5°C
	Third week (July 21 2017)	25.2-38.4°C	25.9-38.8°C
	Fourth week (July 28 2017)	23.2-30.4°C	23.8-30.7°C
August	First week (August 03 2017)	24.1-28.4°C	24.8-28.8°C
	Second week (August 10 2017)	23.2-29.8°C	24.1-30.4°C
	Third week (August 17 2017)	22.4-29.2°C	23.1-29.6°C
	Fourth week (August 24 2017)	23.5-29.8°C	24.0-30.1°C
	Fifth week (August 31 2017)	22.9-29.3°C	23.7-30.5°C

Tabel 3. Soil pH, moisture and mineral content in Indralaya and Rambutan district.

Location	Parameter		Soil mineral content					
	pH	Humidity	C	N	K	Na	Ca	Mg
Rambutan	5.10	3.90	2.89	0.39	0.19	0.22	0.68	0.10
Indralaya	5.20	4.50	0.27	0.27	0.96	0.22	0.90	0.18

Table 4. Food vegetation composition at swamp buffalo habitat in Indralaya and Rambutan.

No	Family	Species	Local name	Attendance on transects							
				Rambutan				Indralaya			
				I	II	III	IV	V	VI	VII	VIII
1.	Fabaceae	<i>Aeschynomene sensitive</i>	Rumput Pete	-	-	-	-	+	-	-	+
2.	Graminae	<i>Andropogon ischaemum</i>	Rumput Pasir	+	-	+	+	-	-	-	-
3.	Graminae	<i>Brachiaria decumbens</i>	Kumpai Tembaga	-	+	+	-	-	-	-	-
4.	Graminae	<i>Brachiaria muticum</i>	Rumput Malela	-	-	-	-	-	+	-	+
5.	Graminae	<i>Digitaria sanguinalis</i>	Kumpai Bebulu	+	-	+	-	-	-	-	-
6.	Poaceae	<i>Echinochloa stagnina</i>	Rumput Burgu	+	-	-	+	-	-	-	-
7.	Cyperaceae	<i>Eleocharis dulcis</i>	Rumput Kasur	+	+	-	+	+	+	-	+
8.	Graminae	<i>Eleusine indica</i>	Rumput Belulang	-	+	-	+	+	-	+	-
9.	Cyperaceae	<i>Fimbristylis annua</i>	Alang Lebak	-	-	+	-	+	-	+	+
10.	Poaceae	<i>Hymenachne acutigluma</i>	Rumput Kumpai	+	-	-	+	-	-	-	-
11.	Graminae	<i>Imperata cylindrica</i>	Ilalang	-	-	+	-	-	-	-	-
12.	Poaceae	<i>Ischaemum rugosum</i>	Bleblem	+	-	-	+	-	-	-	-
13.	Cyperaceae	<i>Kyllinga brevifolia</i>	Rumput Teki	-	-	+	-	+	-	-	-
14.	Poaceae	<i>Leersia hexandra</i>	Rumput Banta	-	+	-	-	-	-	+	+
15.	Poaceae	<i>Pennisetum purpureum</i>	Rumput Gajah	-	-	-	-	-	+	-	+
16.	Graminae	<i>Oryza rufifogon</i>	Kumpai Padi	-	-	+	+	+	-	+	-
17.	Graminae	<i>Paspalum conjugatum</i>	Kumpai Minyak	+	+	+	-	-	-	-	-
18.	Poaceae	<i>Saccharum spontaneum</i>	Rumput Gelagah	-	+	-	-	-	-	-	-
Number of family / species				3/7	3/6	2/8	3/7	3/6	3/3	3/4	4/6

Eleocharis dulcis, *Eleusine indica*, *Fimbristylis annua*, *Hymenachne acutigluma*, *Imperata cylindrica*, *Ischaemum rugosum*, *Kyllinga brevifolia*, *Leersia hexandra*, *Oryza rupifogon*, *Paspalum conjugatum*, *Saccharum spontaneum* and Indralaya vegetation was consist of 9 species that includes *Aeschynomene sensitiva*, *Brachiaria muticum*, *Eleocharis dulcis*, *Eleusine indica*, *Fimbristylis annua*, *Kyllinga brevifolia*, *Leersia hexandra*, *Pennisetum purpureum* and *Oryza rupifogon*. Environmental conditions of swamp buffalo dominated by grasses belonging to the family of Cyperaceae, Graminae, Fabaceae and Poaceae as the main source of food.

Viewed from presence in Table 4, *Eleocharis dulcis*, *Eleusine indica*, *Fimbristylis annua*, and *Oryza rupifogon* has the highest presence in Rambutan and Indralaya Transects. This was indicated by presence *Eleocharis dulcis* at 6 research transects while *Eleusine indica*, *Fimbristylis annua*, and *Oryza rupifogon* found on 4 transects and the lowest attendance was *Imperata cylindrica* and *Saccharum spontaneum* founded only in 1 transects of the study. *Eleocharis dulcis* very much found on the plot as it suits its habitat. In addition, this species was very useful in erosion control in swamplands (Banner, 2011).

Important value (IV)

Based on Important Value (IV), *Eleocharis dulcis* was 33.32613% and *Paspalum conjugatum* with 32.94816% while the lowest important value was *Leersia hexandra* and *Imperata cylindrica* 5.223182% in Rambutan district and *Eleocharis dulcis* also dominates in Indralaya district with important value was 35.47451% and *Brachiaria muticum* 28.11162% while the lowest important value was *Aeschynomene sensitive* 13.67592% this indicates that *Eleocharis dulcis* and *Paspalum*

conjugatum dominates and had important role in the habitat of swamp buffalo in Rambutan and Indralaya district. Index of diversity of feed species in Habitat Rambutan was 0.998167154 while for Indralaya was 2.679957417. Based on the benchmark value of the species diversity index, the level of diversity of feed in region was relatively low Rambutan namely $0 < H' < 1$ while feed in the Indralaya region was moderate $2 < H' < 3$ (Barbour *et al.*, 1987).

REFERENCES

- Animal Husbandry Department Banyuasin. 2014. *Populasi Ternak Menurut Jenisnya Tahun 2008 sampai Tahun 2014*. Animal Husbandry Department Banyuasin. Banyuasin district, Indonesia.
- Animal Husbandry Department Ogan Komering Ilir. 2012. *Penetapan Kerbau Pampangan*. Animal Husbandry Department Ogan Komering Ilir. Kayu Agung, Indonesia.
- Banner, R., M. Pratt and J. Bowns. 2011. *Grasses and Grasslike Plants of Utah, A Field Guide*. Utah State University Extension Cooperative Extension, Utah State University, USA.
- Barbour, M.G., J.H. Burk and W.D. Pitts. 1987. *Terrestrial Plant Ecology*, 2nd ed, The Benyamin/Cummings. Publishing Company. Inc. Los Angeles, USA.
- Ditjen, P.K.H. 2011. *Penetapan Rumpun/galur Ternak Indonesia Tahun 2010-2011*. Direktorat Jenderal Peternakan dan Kesehatan Hewan, Jakarta, Indonesia.
- Ditjen, P.K.H. 2013. *Surat Keputusan Dirjen PKH Tentang Penetapan Kerbau Simeleue*

- Sebagai Rumpun Ternak Indonesia*. Jakarta (Indonesia): Direktorat Jenderal Peternakan dan Kesehatan Hewan, Indonesia.
- Ditjenak. 2003. *Statistik Peternakan 2003*. Jakarta (Indonesia): Direktorat Jenderal Peternakan, Indonesia.
- Fahimmuddin, M. 1975. *Domestic Water Buffalo*. Oxford and IBH Publishing. Co. GG joupath, New Delhi, India. p. 422.
- Kumar, V. and P. Kumar. 2013. Impact of thermal stress on rectal, skin surface temperatures, respiration rate, heat load index and heat storage in lactating Murrah buffaloes (*Bubalus bubalis*). *Buffalo Bull.*, **32**(2): 1141-1144.
- Kusmana, C. 1997. *Metode Survey Vegetasi*. Institut Pertanian Bogor, Bogor, Indonesia.
- Michael, P. 1991. *Metode Ekologi Untuk Penyelidikan Lapangan dan Laboratorium*. UIP Press, Jakarta, Indonesia.
- Odum, E.P. 1994. *Dasar-Dasar Ekologi. Edisi Ketiga*. Gadjah Mada University Press, Yogyakarta, Indonesia.
- Parakkasi, A. 1995. *Ilmu Nutrisi dan Makanan Ternak Ruminan*. UI-PRESS, Jakarta, Indonesia.
- Poerwowidodo. 1991. *Ganesa Tanah: Proses Genesa dan Morfologi*. Rajawali, Jakarta, Indonesia.
- Rose, F. 1989. *Colour Identification Guide to the Grasses, Sedges, Rushes and Ferns of the British Isles and North Western Europe*. Penguin Books Ltd, London, UK. p. 240.
- Steenis, C.G.G.J., S. Bloembergen and P.J. Eyma. 2006. *Flora*. Pradnya Paraamita, Jakarta, Indonesia.
- Undersander, D., M. Casler and D. Cosgrove. 1996. *Identifying Pasture Grasses*. Cooperative Extension Publication, University of Wisconsin-Extension, USA.
- Welsh, S.L., N.D. Atwood, S. Goodrich and L.C. Higgins. 2003. *A Utah Flora*. Brigham Young University. Provo, Utah, USA. p. 912.
- Windusari, Y., E. Nofyan, M. Kamal, L. Hanum and R. Pratama. 2014. Biophysics environmental condition of swamp buffalo (*Bubalus bubalis*) pampangan in district Rambutan, south Sumatra. *J. Biol Res-Thessalon.*, **19**(2): 78-81.

REPORT OF SWAMP BUFFALO PAMPANGAN, BUBALUS BUBALIS (LYDEKKER, 1913) HABITAT AT BANYUASIN (RAMBUTAN) AND OGAN ILIR (INDRALAYA) DISTRICT, SOUTH SUMATRA, INDONESIA

ORIGINALITY REPORT

3%

SIMILARITY INDEX

PRIMARY SOURCES

1	www.conscientiabeam.com Internet	58 words — 2%
2	mos.gov.pl Internet	23 words — 1%
3	ibic.lib.ku.ac.th Internet	22 words — 1%

EXCLUDE QUOTES ON
EXCLUDE BIBLIOGRAPHY ON

EXCLUDE MATCHES < 1%

**FORMAT PENILAIAN (VALIDASI & PEER REVIEW)
LEMBAR
HASIL PENILAIAN SEJAWAT SEBIDANG ATAU *PEER REVIEW*
KARYA ILMIAH : JURNAL ILMIAH**

Jurnal Artikel Ilmiah : Report of swamp buffalo Pampangan, Bubalus bubalis (lydekker, 1913) habitat at Banyuasin (Rambutan) and Ogan Ilir (Indralaya)

Penulis Artikel Ilmiah : Arum Setiawan

Identitas Jurnal Artikel Ilmiah : a. Nama Jurnal : Bufalo Bulletin
b. Nomor/Volume/Hal : 4/38/659-671
c. Edisi (bulan/tahun) : Desember 2019
d. Penerbit : International Buffalo Information Center
e. Jumlah Halaman : 13

Kategori Publikasi Jurnal Ilmiah : Jurnal Ilmiah Internasional Bereputasi
(beri \surd pada kategori yang tepat) Jurnal Ilmiah Internasional
 Jurnal Ilmiah Nasional Terakreditasi S1, S2
 Jurnal Ilmiah Nasional Terakreditasi S3, S4
 Jurnal Ilmiah Nasional Tidak Terakreditasi

I. Hasil Penilaian Validasi :

No.	ASPEK	URAIAN/KOMENTAR PENILAIAN
1.	Indikasi Plagiasi	3 %
2.	Linearitas	Sudah linier dengan bidang biologi konservasi

II. Hasil Penilaian *Peer Review* :

Komponen Yang Dinilai	Nilai Maksimal Jurnal Ilmiah (isikan di kolom yang sesuai)					Nilai Akhir Yang Diperoleh
	Internasional Bereputasi (Maks 40)	Internasional (Maks 20)	Nasional Terakreditasi S1, S2 Maks 25	Nasional Terakreditasi S3, S4 Maks 20	Nasional tidak Terakreditasi (maks 10)	
Kelengkapan dan Kesesuaian unsur isi jurnal (10%)	4					4
Ruang lingkup dan kedalaman pembahasan (30%)	12					12
Kecukupan dan Kemutakhiran data/informasi dan metodologi (30%)	12					12
Kelengkapan unsur dan kualitas penerbit (30%)	12					12
Total = (100%)	40					40
Kontribusi Pengusul (Penulis Pertama /Anggota Utama)	Anggota Utama $(0,4 \times 40) / 4 = 4$					4
KOMENTAR/ULASAN <i>PEER REVIEW</i>						
• Kelengkapan dan Kesesuaian Unsur:	Paper terkait laporan tentang kerbau <i>Bubalus bubalis</i> di Banyu Asin. Isi paper sudah memenuhi kaidah-kaidah karya ilmiah dan sudah sesuai dengan bidang biologi konservasi					
• Ruang Lingkup dan Kedalaman Pembahasan:	Hasil penelitian dibahas secara komprehensif dengan penyampaian pembandingan dari temuan-temuan penelitian lainnya dan teori terkait. Referensi yang diacu dalam pembahasan sudah cukup update untuk bidang kajian ini.					
• Kecukupan & Kemutakhiran Data & Metodologi:	Data-data hasil penelitian sudah baik dan didukung peta lokasi sampling dan gambar yang ditampilkan menarik. Data didapatkan dengan menggunakan metode yang sudah standard.					
• Kelengkapan Unsur & Kualitas Penerbit:	Penerbit International Buffalo Information Center berkualitas baik, tidak termasuk predatory publisher, dan jurnal terindeks di scopus Q4					

Surabaya, 15 Mei 2020
Penilai 1



Prof. Hery Purnobasuki, M.Si., Ph.D.
NIP 196705071991021001
Unit Kerja : Jurusan Biologi FST Unair
Bidang Ilmu : Biologi
Jabatan/Pangkat : Guru Besar/ Pembina Utama Madya

FORMAT PENILAIAN (VALIDASI & PEER REVIEW)
LEMBAR
HASIL PENILAIAN SEJAWAT SEBIDANG ATAU PEER REVIEW
KARYA ILMIAH : JURNAL ILMIAH

Jurnal Artikel Ilmiah : Report of swamp buffalo Pampangan, Bubalus bubalis (Lydekker, 1913) habitat at Banyuasin (Rambutan) and Ogan Ilir (Indralaya)

Penulis Artikel Ilmiah : Arum Setiawan

Identitas Jurnal Artikel Ilmiah : a. Nama Jurnal : Buffalo Bulletin
 b. Nomor/Volume/Hal : 4/38/659-671
 c. Edisi (bulan/tahun) : Desember 2019
 d. Penerbit : International Buffalo Information Center
 e. Jumlah Halaman : 13

Kategori Publikasi Jurnal Ilmiah : Jurnal Ilmiah Internasional Bereputasi
 (beri v pada kategori yang tepat) Jurnal Ilmiah Internasional
 Jurnal Ilmiah Nasional Terakreditasi S1, S2
 Jurnal Ilmiah Nasional Terakreditasi S3, S4
 Jurnal Ilmiah Nasional Tidak Terakreditasi

I. Hasil Penilaian Validasi :

No.	ASPEK	URAIAN/KOMENTAR PENILAIAN
1.	Indikasi Plagiasi	3 %
2.	Linearitas	v

II. Hasil Penilaian Peer Review :

Komponen Yang Dinilai	Nilai Maksimal Jurnal Ilmiah (isikan di kolom yang sesuai)					Nilai Akhir Yang Diperoleh
	Internasional Bereputasi (Maks 40)	Internasional (Maks 20)	Nasional Terakreditasi S1, S2 (Maks 25)	Nasional Terakreditasi S3, S4 (Maks 20)	Nasional tidak Terakreditasi (maks 10)	
Kelengkapan dan Kesesuaian unsur isi jurnal (10%)	4					3
Ruang lingkup dan kedalaman pembahasan (30%)	12					11
Kecukupan dan Kemutakhiran data/informasi dan metodologi (30%)	12					12
Kelengkapan unsur dan kualitas penerbit (30%)	12					12
Total = (100%)	40					38
Kontribusi Pengusul (Penulis Pertama /Anggota Utama)	Buffalo Bulletin 2019 termasuk Q4. SJR 0,15. Nilai maksimal: 95% Nilai pengusul: $(0,4 \times 0,95 \times 40) / 4 = 3,8$					3,8
KOMENTAR/ULASAN PEER REVIEW						
• Kelengkapan dan Kesesuaian Unsur:	Narasi diblok di 7 tempat. Sumatra yang baku Sumatera. Penulis ke 5 dari 5 penulis. Pustaka cukup memadai. Acuan bentuk terjemahan harus disebut penerjemahnya.					
• Ruang Lingkup dan Kedalaman Pembahasan:	Author dalam narasi ada yang tidak urut tahun publikasi. Kesalahan ketik atau yang lain, pH meter water? $100 \times 100 \text{m} = 10.000 \text{m}$ bukan 10.000m^2 . Betulkah narasi $5,1 < \text{pH} > 5,6$?					
• Kecukupan & Kemutakhiran Data & Metodologi:	Data cukup lengkap walaupun tidak banyak. Metode yang digunakan sudah biasa dilakukan umum.					
• Kelengkapan Unsur & Kualitas Penerbit:	Penerbit berkualitas.					

Yogyakarta, 12 Juni 2020

Penilai 2

tanda tangan.....

Prof. Dr. Suwarno Hadisusanto

NIP 195411161983031002

Unit Kerja : Fakultas Biologi UGM

Bidang Ilmu : Biologi/Ekologi

Jabatan/Pangkat : Guru Besar/ Pembina Utama Madya