

Kinetics Approach of Biodegradation of Petroleum Contaminated

by Bambang Yudono

Submission date: 16-Jan-2020 02:19PM (UTC+0700)

Submission ID: 1242554168

File name: inetics_Approach_of_Biodegradation_of_Petroleum_Contaminated.pdf (240K)

Word count: 3367

Character count: 17898

Kinetics Approach of Biodegradation of Petroleum Contaminated Soil by using Indigenous Isolated Bacteria

Bambang Yudono¹, Muhammad Said², Sabaruddin³, Adipati Napoleon³ and Zainal Fanani¹

¹Department of Chemistry, University of Sriwijaya, Palembang, Indonesia

²Department of Chemical Engineering, University of Sriwijaya, Palembang, Indonesia

³Department of Soil Science, Faculty of Agriculture, University of Sriwijaya, Palembang, Indonesia
Jl. Raya Palembang-Prabumulih Km 32 Indralaya South Sumatera 30662, Indonesia
Tel: +62711580335, Fax +62711580056, E-mail: yudonob@hotmail.com

Received 17 February 2010 / accepted 5 January 2011

ABSTRACT

The bioremediation of petroleum contaminated soil was investigated using a microscale Landfarming. The Indigenous bacteria, *Pseudomonas pseudoalcaligenes*, *Bacillus megaterium*, and *Xanthobacter autotrophicus* were isolated from the contaminated sites Sungai Lilin Jambi Pertamina Ltd and used further in the bioremediation experiments. The biodegradation rates of petroleum contaminated soil in the presence of the isolated bacteria were studied by using the chemical kinetics approach. The reaction orders were studied by using the differential method and the reaction rate constants were studied by using the integral method. The results showed that the reaction orders were 1.0949, 1.3985, 0.8823, and the reaction rate constants were 0.0189, 0.0204, 0.0324 day⁻¹, respectively. Considering the values of reaction orders and reaction rate constants, the biodegradation rate of contaminated soil by using each bacteria had significantly different value; *Xanthobacter Autotrophicus* bacteria could degrade the petroleum oil sludge fastest than the others.

Keywords: Biodegradation, indigenous bacteria, kinetics, petroleum oil

INTRODUCTION

Among solid phase treatment technologies, landfarming has distinctive advantage for stimulating the native soil bacteria that are enriched in the soil by presence of contaminants but that are constrained in their degradation capability by limiting factors such as inadequate aeration, poor contact of microorganisms with the contaminants and insufficient nutrients (Hansen *et al.* 2004). Normally, traditional agriculture procedures are used to create mixing and aeration (tilling, bulking), to provide moisture (irrigation) and nutrients (fertilizer). Landfarming is one of the accepted method remediation processes by US EPA (US EPA 1995).

The biodegradation potential of hydrocarbons is not only defined by their chemical composition, but also by the biological, physical and chemical characteristics of the soil environment (Betancur-Galvis *et al.* 2006). The rate at which microbial cells can covert chemicals during bioremediation processes depends on the rate of uptake and

metabolism (the intrinsic activity of the cell) and the rate of transfer to the cell. Studies have shown that bacterial degradation was altered greatly by the physical and chemical features of the heterogeneous microbial environment (Tang *et al.* 2005).

Wide assortments of bacterial consortium, which are responsible for degradation of hydrocarbons found in petroleum contaminated soil, are aerobic bacteria. The major micro organisms responsible for biodegradation of petroleum hydrocarbons have been found to be bacteria and fungi (Boonchan *et al.* 2000). The genera to which hydrocarbon degrading bacteria belong are *Pseudomonas*, *Alcaligenes*, *Micrococcus*, *Nocardia*, *Corynebacterium*, *Rhodococcus*, *Enterobacter*, *Eschrechia*, *Arthrobacter*, *Bacillus*, *Streptomyces*, *Clostridium*, and *Proteus* (Strauss and du Plessis 2000).

Few works have been dedicated to investigate the kinetics of soil bioremediation. Antizar-Ladislao *et al.* 2005; Li *et al.* 2006). Information on kinetics is extremely important because it characterizes the concentration of the chemical remaining at any time and permits prediction of the levels likely to be present at some future time.

Hwang *et al.* (2001) investigated the bioremediation of diesel-contaminated using

composting techniques. The results of the applied first order kinetics model agreed to a great extent with the experimental results. They found that the average first order kinetic rate constant of diesel oil was 0.099 day^{-1} . Antizar-Ladislao *et al.* (2005) have studied the biodegradation of 16 polycyclic aromatic hydrocarbons using laboratory scale in-vessel composting at different temperatures. The degradation took place in mixed culture of bacteria, fungi, and actinomycetes. They found out that the first order kinetics could satisfactorily describe bioremediation process and the first order kinetic constant for all contaminants ranged between 0.009 day^{-1} at 70°C and 0.013 day^{-1} at 38°C . Li *et al.* (2006) studied the biodegradation of diesel contaminated soil by an isolated bacterial genus *Planococcus*. They used a Luong model to describe the bio reaction kinetics. The kinetic model was solved to obtain a maximum growth rate $\mu_{\text{max}} = 0.34 \text{ h}^{-1}$ and saturation concentration $K_s = 0.041 \text{ mM}$.

First-order kinetics is commonly used to describe biodegradation in environmental fate models because mathematically the expression can be incorporated easily into the models (Greene *et al.* 2000). Many investigators grasp at first-order kinetics because of the ease of presenting and analyzing the data, the simplicity of plotting the logarithm of the chemical remaining versus time as a straight line, and the ease of predicting future concentrations (Reardon *et al.* 2002). In different environments, first-order constants and the number of cells able to metabolize the substrate would differ (Greene *et al.* 2000).

The main objectives of this work were to isolate an indigenous bacterium capable to bio remediate petroleum contaminated soil and to find out the reaction order and reaction rate kinetic constant of the biodegradation process for the purpose of specific degradation rate determination.

MATERIALS AND METHODS

Site and Experiment Scale

Bioremediation experiments of petroleum oil sludge were undertaken in small scale of 25 kg or the ratio is 1 : 100 from the actual bed of field scale process. The thickness of the dehydrated sludge in the prepared bed was 10 cm.

Pretreatment of the Oil Sludge

The petroleum oil sludge collected from storage pit was put into the prepared bed. The oil sludge had heavy clay texture and low oxygen

diffusivity. In order to enhance aeration and water-holding capacity of the sludge, organic and inorganic bulking materials (wood particles and sandy soil) were added. The content of wood particles in the sludge was 10.0% (w/w) and that of sand was 10% (w/w). Urea was provided as a nitrogen source, and potassium dihydrogen phosphate as a phosphorus source. The ratio of C, N and P in the oil sludge was 100:10:1 after the fertilizers had been added. The initial TPH concentrations were 9.82%, which diluted from the main contaminated soil sample, its concentration of Total Petroleum Hydrocarbon (TPH) of contaminated soil was 71.16%.

Bioremediation Process

Microorganism were collected from the contaminated soil which the following procedure; soil samples were collected from three different petroleum contaminated sites near the Sungai Lilin Pertamina Ltd. The samples were taken from each location at depths of 5 and 10 cm. Twenty grams of each soil sample were soaked in 100 ml of Ringer's solution (6.5 g NaCl, 0.42 g KCl, 0.25 g CaCl_2 per liter of distilled water) and shaken at 175 rpm for 2 h (Boonchan *et al.* 2000). Samples were then allowed to settle for 24 h at room temperature. A volume of 5 ml of the supernatant was used to inoculate 50 ml of basal salt medium solution "BHMS" which consist of $\text{Mg}_2\text{SO}_4 \cdot 7\text{H}_2\text{O}$ 0.2 g L^{-1} , CaCl_2 0.02 g L^{-1} , KH_2PO_4 1 g L^{-1} , K_2HPO_4 1 g L^{-1} , NH_4NO_3 1 g L^{-1} , FeCl_3 0.05 g L^{-1} dissolved in 1 L aquadest containing crude oil at concentration of 50 mg L^{-1} .

Inoculated BHMS samples were incubated at 37°C for 24 h (Kanaly *et al.* 2000) and then 0.1 ml from the suspension was plated in duplicate on Petri dishes containing basal mineral salt medium (BHMS agar). Cycloheximide (0.1 g L^{-1}) was added to the media in order to kill any possible existing fungi and to permit the growth of clear bacterial colonies. Petri dishes were incubated at 37°C for 3 days. After incubation, bacterial strain was isolated depending on the macroscopic characters of the colonies (shape, color, and size). The isolation was carried out by sub culturing of each different colony on trypticose soy agar plates and incubating at 37°C for 24 h to enhance the growth (Williams *et al.* 1998). The isolated bacteria were cultivated in (BHMS solution at 37°C . This is considered as a bacterial stock that will be used as an inoculum in the further bioremediation experiments.

Identification of isolated bacteria was carried out according to the colony characteristics and

using analytical profile index API 20 NE (Murray *et al.* 1995). API 20 NE test was used as a bacterial species identification kit that encompasses 20 different biochemical tests. The results of the biochemical tests were then interpreted using bioMérieux specific code manual to identify the bacterial species.

The bioreactors were inoculated by the isolated bacterial suspension at 10% concentrations according to the specific experimental design. The concentration of microorganism in the bacterial suspension was measured using the gravimetric analysis of total suspended solid (TSS). The bacteria concentration was 10¹⁰ cfu. All experiments were conducted in a room temperature laboratory at temperature ± 25°C. Two soil samples ± 5 g were removed every two weeks from each bioreactor to test the rate of degradation. Crude oil in soil samples was extracted using *soxhlet extractor* by adding 250 ml of diethylene ether. The extraction process was finished when there was no more crude oil dissolved in the solvent.

RESULTS AND DISCUSSION

The petroleum oil sludge pollutant has many components, it can be seen in the Figure 1 and 2 the chromatogram initial condition and after 70 days incubated by using the *Xanthobacter Autotrophicus* bacteria. It will be very complicated to analysis each components during the biodegradation process. In order to make it simpler, the biodegradation kinetics was

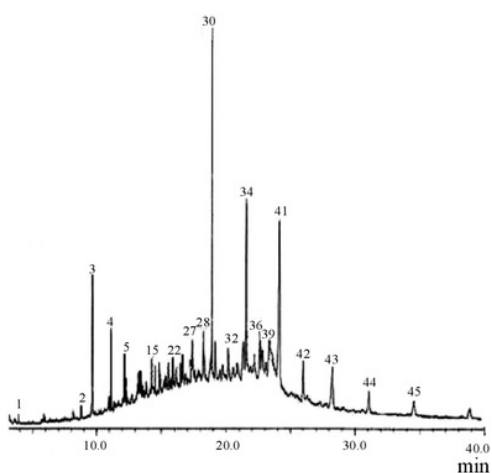
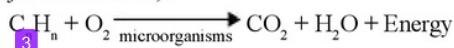


Figure 1. The Chromatogram of sample at the initial condition.

calculated as the decreasing concentration of Total Petroleum Hydrocarbon (TPH).

The hydrocarbon compounds were biodegraded into carbon dioxide, water and energy (Hojae *et al.* 2005).



The general formula of the chemical reaction kinetic that can be described as the rate of TPH reduction is:

$$r = \frac{dC}{dt} = -kC^n \dots\dots\dots [1]$$

Where:

r: reaction rate (concentration unit/time unit = TPH/Δτ)

t : time (day)

C: remaining TPH concentration (mg L⁻¹) at any time

n: reaction order

k: first order kinetic constant (1 day⁻¹)

In Equation 1, it was assumed that the microbial concentration remained constant over the entire experimentation period. Therefore, the effect of microbial concentration on the kinetics constant could be neglected.

The linearization results of the experimental data are graphically presented in Figure 2 and it is derived from Equation 1.

$$\ln r = \ln k + n \ln c \dots\dots\dots [2]$$

If Equation 2 ln r vs ln c are plotted, it will be straight line graph with the slope is n and the intercept is ln k. The rate reaction constant will be more accurate when it is determined by using integral method, and it will be discussed further in

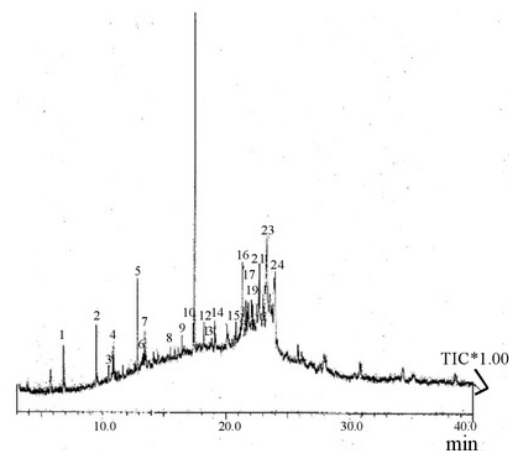


Figure 2. The chromatogram of sample after 70 days incubated by using *Xanthobacter autotrophicus* bacteria.

Table 1. TPH concentration (%) in the treated soil at initial and after 14 days incubation.

Initial TPH Concentration in treated soil (%)	The decreasing TPH concentration (%) after 14 days incubated by using bacteria		
	<i>Bacillus Megaterium</i>	<i>Xanthobacter Autotrophicus</i>	<i>Pseudomonas pseudoalcaligenes</i>
4.18	1.30	2.91	2.99
6.60	2.48	4.47	4.74
9.82	4.76	6.69	7.96
10.87	5.05	6.84	8.44
13.42	6.33	7.97	10.41

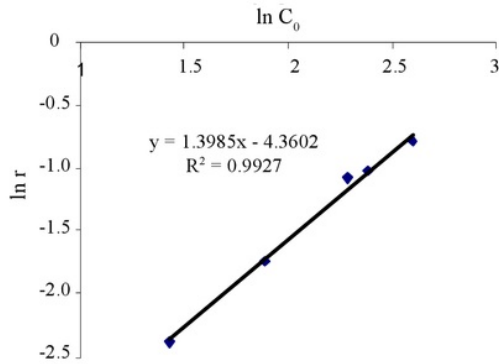


Figure 3. Graph $\ln C_0$ vs. $\ln r$ to determine reaction order treated soil by using *Bacillus megaterium*.

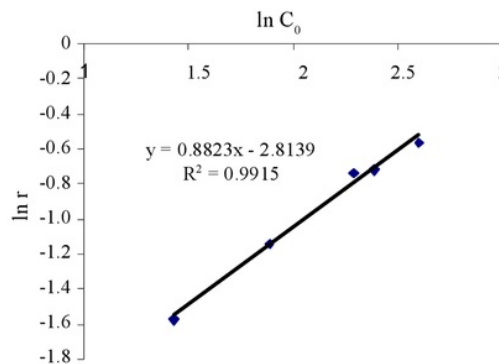


Figure 4. Graph $\ln C_0$ vs. $\ln r$ to determine reaction order treated soil by using *Xanthobacter autotrophicus*.

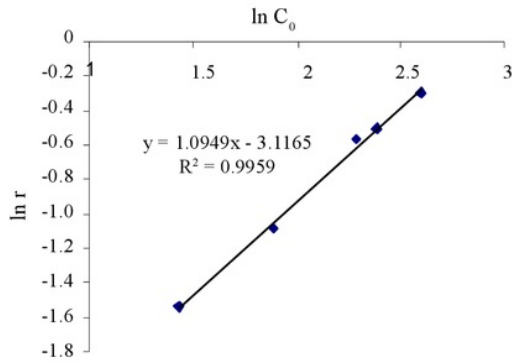


Figure 5. Graph $\ln C$ vs $\ln r$ to determine reaction order treated soil by using *Pseudomonas pseudoalcaligenes*.

determining reaction rate constant by using integral method.

The result of THP analysis in the initial and after 14 days incubated by bacteria is showed in Table 1.

According to equation 4, the data in Table 1 are calculated as $\ln C_0$ and $\ln r$, then it is plotted into graph as shown in the Figure 3.

From the Figure 3, 4, and 5, and equation 4; the biodegradation reaction order of, *Xanthobacter autotrophicus*, *Pseudomonas pseudoalcaligenes*, *Bacillus megaterium* bacteria are 0.8823, 1.0949, and 1.3985 respectively. Generally among researchers these values are rounded up to be 1, therefore these values are significantly different.

Determination the Reaction Rate Constant by Using the Integral Method

The integration of Equation 1 leads to the known formula of the first-order kinetics

$$C = C_0 e^{-kt} \dots\dots\dots [3]$$

Where:

C_0 : the initial concentration (mg/l) or TPH_0

In order to experimentally calculate the kinetic constant k, Eq. 3 is linearized using the following equation

$$\ln \frac{C_0}{C} = kt \dots\dots\dots [4]$$

$$\ln TPH = -kt + \ln TPH_0 \dots\dots\dots [5]$$

Table 2. The TPH concentration in treated soil after incubated by using bacteria.

Time (day)	TPH Concentration (%) in soil treated by bacteria		
	<i>Xanthobacter autotrophicus</i>	<i>Bacillus megaterium</i>	<i>Pseudomonas pseudoalcaligenes</i>
0	9.82	9.82	9.82
14	6.69	4.77	7.96
28	3.00	3.60	4.06
42	2.10	3.18	3.90
56	1.56	2.79	3.56
70	1.06	1.89	2.52

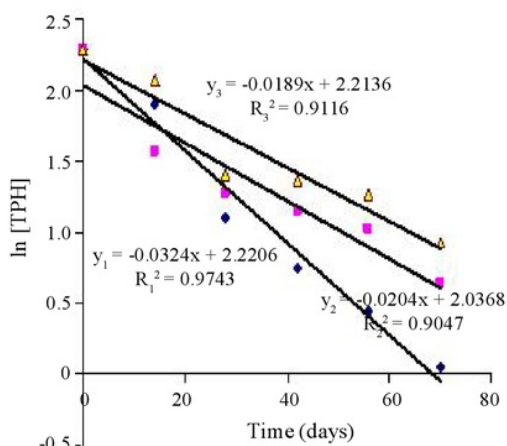


Figure 6. Graph $\ln [TPH]$ vs Time to determine reaction rate constant. \blacklozenge = *Xanthobacter autotrophicus*, \blacksquare = *Bacillus megaterium*, and \blacktriangle = *Pseudomonas pseudoalcaligenes*.

The initial concentration of sample was 9.82 %; it was inoculated by using *Bacillus megaterium*, *Xanthobacter autotrophicus*, *Pseudomonas pseudoalcaligenes* bacteria. It had been observed during 0, 14, 28, 42, 56, and 70 days, the decreasing TPH concentrations in the treated soil were shown in Table 2.

Based on the equation 7, the data were plotted the logarithmic part of Equation 7 versus time. Analysis of the rates of hydrocarbons removal showed that most compounds obeyed first-order kinetics (Greene *et al.* 2000). The slope of the line represents the first-order kinetic constant k .

Considering on the Figures 3, 4, 5, and 6, the values of reaction orders and reaction rate constants are shown in the Table 3

When the reaction is assumed as first order reaction, the reaction rate is determined by the value of reaction rate constant. Based on the reaction rate constant value, the *Xanthobacter autotrophicus*

Table 3. The kinetics biodegradation parameters of bacteria.

Bacteria	The kinetics parameters	
	n	k (day ⁻¹)
<i>Xanthobacter Autotrophicus</i>	0.8823	0.0324
<i>Pseudomonas pseudoalcaligenes</i>	1.0949	0.00189
<i>Bacillus Megaterium</i>	1.3985	0.0204

bacteria can degradate the TPH in the petroleum oil sludge fastest among the others. Similar results were found in previous studies that were conducted on bioremediation of petroleum contaminated soil (Bock *et al.* 1994; Strauss and du Plessis 2000; Boonchan *et al.* 2000; Barathi and Vasudevan 2001; Bassim and Shquirat 2008). However, the reaction rate can be calculated more detail by using the real reaction orders as described in the Table 3. These calculation can be explained as following equation.

The equation 1 is converted into integral equation:

$$-\frac{d[C]}{dt} = -k[C]^n \dots\dots\dots [6]$$

$$\int_{C_0}^{C_t} [C]^{-n} d[C] = -k \int dt \dots\dots\dots [7]$$

Table 4. The kinetics approach of biodegradation of petroleum contaminated soil.

Bacteria biodegrader	The Kinetics Approach of Biodegradation
<i>Xanthobacter autotrophicus</i>	$C_t^{0.117} = C_0^{0.117} - 0.117.kt$
<i>Bacillus megaterium</i>	$C_t^{-0.3985} = C_0^{-0.3985} + 0.3985.kt$
<i>Pseudomonas pseudoalcaligenes</i>	$C_t^{-0.0949} = C_0^{-0.0949} + 0.0949.kt$

The integral equation results:

$$[C]_t^{(-n+1)} = [C]_0^{(-n+1)} - (-n+1).k.t \dots\dots\dots [8]$$

When each the reaction or n value is inserted into the Equation 8, so the Kinetics Approach of Biodegradation of Petroleum Contaminated Soil are described in the Table 4.

CONCLUSIONS

Considering the values of reaction orders and reaction rate constants, the biodegradation rate of contaminated soil by using each bacteria had significantly different value; *Xanthobacter Autotrophicus* bacteria could degrade the petroleum oil sludge faster than the others.

REFERENCES

- Antizar-Ladislao B, J Lopez-Real and AJ Beck. 2005. Laboratory studies of the remediation of polycyclic aromatic hydrocarbon contaminated soil by in-vessel composting. *Waste Manag* 25: 281-289.
- Barathi S and N Vasudevan. 2001. Utilization of petroleum hydrocarbon by *Pseudomonas fluorescens* isolated from a petroleum contaminated soil. *Environ Int* 26 (5): 413-416.
- Bassim EA and WD Shquirat. 2008. Kinetics of indigenous isolated bacteria used for ex-situ bioremediation of petroleum contaminated soil. *Water Air Soil Pollut* 192: 221-226.
- Betancur-Galvis LA, D Alvarez-Bernal, AC Ramos-Valdivia and L Dendooven. 2006. Bioremediation of polycyclic aromatic hydrocarbon-contaminated saline-alkaline soils of the former Lake Texcoco. *Chemosphere* 62: 1749-1760.
- Bock M, K Kampfer and W Dott. 1994. Isolation and characterization of heterotrophic aerobic bacteria from oil storage caverns in northern Germany. *Appl Microbiol Biotech* 42: 463-468.
- Boonchan S, ML Britz and GA Stanley. 2000. Degradation and mineralization of high-molecular-weight polycyclic aromatic hydrocarbons by defined fungalbacterial cocultures. *Appl Environ Microbiol* 66 (3): 1007-1019.
- Greene EA, JG Kay, K Jaber, G Stehmeier and G Voordouw. 2000. Composition of soil microbial communities enriched on a mixture of aromatic hydrocarbons. *Appl Environ Microbiol* 66 (12): 5282-5289.
- Hansen LD, C Nestler, D Ringelberg and R Bajpai. 2004. Extended bioremediation of PAH/PCP contaminated soils from the POPILE wood treatment facility. *Chemosphere* 54: 1481-1493.
- Hojae S, H Byungho, L Sang-Seob and K Sung-Ho. 2005. Kinetics of BTX biodegradation by a coculture of *Pseudomonas putida* and *Pseudomonas fluorescens* under hypoxic conditions. *Biodegradation* 16: 319-327.
- Hwang E, W Namkoong and J Park. 2001. Recycling of remediated soil for effective composting of dieselcontaminated soil. *Compost Sci Util* 9 (2): 143-149.
- Kanally RA, R Bartha, K Watanabe and S Harayama. 2000. Rapid mineralization of benzopyrene by a microbial consortium growing on diesel fuel. *Appl Environ Microbiol* 66: 4205-4211.
- Li H, YH Liu, N Luo, XY Zhang, TG Luan and JM Hu. 2006. Biodegradation of benzene and its derivatives by a psychrotolerant and moderately haloalkaliphilic *Planococcus* sp. Strain ZD22. *Res Microbiol* 157: 629-636.
- Murray PR, EJ Baron, MA Pfaller, FC Tenover and RH Tenover. 1995. Manual of Clinical Microbiology, Vol 6th ed. ASM, Washington, DC.
- Reardon KF, DC Mosteller, JB Rogers, NM DuTeau and K Kee-Hong. 2002. Biodegradation kinetic of aromatic hydrocarbon mixtures by pure and mixed bacterial cultures. *Environ Health Perspect* 110 (12):1005-1012.
- Strauss JM and CA du Plessis. 2000. Empirical model for biofiltration of toluene. *J Environ Eng* 126 (7): 644-648.
- Tang Y, JL Qi and B Krieger-Brockett. 2005. Evaluating factors that influence microbial benanthrene biodegradation rates by regression with categorical variables. *Chemosphere* 59: 729-741.
- USEPA. 1995. Cost and performance report: slurry phase bioremediation application at the Southeastern Wood Preserving Superfund Site Canton, Mississippi. Report contract Number: 68-W3-0001
- Williams DL, KD Kriel, GA Stewart, RC Hulse, JE Holsomback and JR Stewart. 1998. Bioremediation of oil-contaminated soils by stimulating indigenous microbes. *Environ Geosci* 5 (1): 1-9.

Kinetics Approach of Biodegradation of Petroleum Contaminated

ORIGINALITY REPORT

21%

SIMILARITY INDEX

11%

INTERNET SOURCES

14%

PUBLICATIONS

12%

STUDENT PAPERS

PRIMARY SOURCES

1

studentsrepo.um.edu.my

Internet Source

4%

2

Submitted to Universiti Malaysia Sabah

Student Paper

3%

3

M Imani, M Ebrahimnejad Miangoleh, A Mokhtarpour Bazmin Abadi. "Bioremediation Process for Oil Contaminated Underground Water", IOP Conference Series: Earth and Environmental Science, 2018

Publication

3%

4

Submitted to Universiti Teknologi MARA

Student Paper

2%

5

Submitted to University of Pittsburgh

Student Paper

2%

6

Submitted to University of Northumbria at Newcastle

Student Paper

1%

7

Submitted to Glasgow Caledonian University

Student Paper

1%

8

Gloria Andrea Silva-Castro, Imane Uad, Alfonso Rodríguez-Calvo, Jesús González-López, Concepción Calvo. "Response of autochthonous microbiota of diesel polluted soils to land-farming treatments", Environmental Research, 2015

Publication

1%

9

Okoh Elechi, Dr. Zekeni Robert Yelebe, Bernard Oruabena, Sinte Ebitei Nelson. "Comparative Study of Degradation Kinetics of Crude oil Contaminated Mangrove and Clay Soils", International Journal of Advances in Scientific Research and Engineering, 2018

Publication

1%

10

doaj.org

Internet Source

1%

11

www.frontiersin.org

Internet Source

1%

12

Soha Farag, Nadia A. Soliman, Yasser R. Abdel-Fattah. "Statistical optimization of crude oil bio-degradation by a local marine bacterium isolate Pseudomonas sp. sp48", Journal of Genetic Engineering and Biotechnology, 2018

Publication

1%

13

www.jourlib.org

Internet Source

1%

Exclude quotes On

Exclude bibliography On

Exclude matches < 1%