

PAPER • OPEN ACCESS

6th International Conference Sustainable Agriculture, Food, and Energy (SAFE2018). October 19-21, 2018 I'M Hotel, Makati. MANILA, PHILIPPINES

To cite this article: 2019 *IOP Conf. Ser.: Earth Environ. Sci.* **347** 011001

View the [article online](#) for updates and enhancements.

**6th International Conference Sustainable Agriculture, Food,
and Energy (SAFE2018). October 19-21, 2018
I'M Hotel, Makati. MANILA, PHILIPPINES**



Preface

We are proud to inform you that the International Conference on Sustainable Agriculture, Food, and Energy (SAFE2018): Inclusive Agri-food Energy Production for Community Empowerment in a Changing Climate” was successfully conducted by SAFE-Network from October 19-21, 2018 in MANILA, Philippine. The host institution was Pampanga State Agricultural University (PSAU), Philippines Centre for Postharvest and Mechanization (PhilMech), and Central Bicol State University of Agriculture (CBSUA), Philippines. This conference was the 6th conference after the 1st International Conference on Sustainable Agriculture, Food, and Energy (SAFE2013) in Padang, Indonesia (12-14 May 2014), the 2nd conference SAFE2014 in Bali, Indonesia (17-19 September 2014). The 3rd conference SAFE2015 in Ho Chi Minh City, VIETNAM (17-19 November 2015), The 4th conference SAFE2016, Colombo, Sri Lanka (October 20-22, 2016), and the 5th conference SAFE2017, Malaysia, August 22-24, 2017.

The objectives of the conference were:

1. To provide a forum for international researchers community to exchange and share the experiences, new ideas, sustainability concepts and research results on sustainable agriculture, food, and energy.
2. To promote collaboration in research on sustainable agriculture, foods, and energy production. To establish a regional networking among participants on sustainable agriculture, food, and energy.
3. To increase awareness of the importance of living and working in the manner that enhances the economic, environmental and social well-being of our community through research, education, regional partnerships, and community engagement.

The committee accepted 150 papers of over 300 papers which were presented in SAFE2019 conference.

On behalf of SAFE-Network, we would like to convey our appreciation and thanks very much to the Pampanga State Agricultural University (PSAU), Central Bicol State University of Agriculture (CBSUA), and Philippines Centre for Postharvest and Mechanization (PhilMech) for co-hosting this conference.

We would like especially to thank Prof. Dr. Tafdil Husni, Rector of Andalas University for his strong support to this event, Dr. Norman de Jesus, local conference coordinator and the members of the local organizing committee who helped with all the preparations required to make the conference a success, as well as the session organizers who worked to ensure a high level of science presented at the meeting. Moreover, of course, we thank all honourable speakers and participants who have agreed to attend and discuss your work! Finally, please understand that while every effort was made to publish this proceeding, we know that unavoidable withdrawals and other changes will occur.

Looking forward to welcoming you to the SAFE2019 conference in Phuket, THAILAND!

Prof. Dr. Novizar Nazir
SAFE-Network Executive Chairman



PAPER • OPEN ACCESS

LIST OF COMMITTEE

To cite this article: 2019 *IOP Conf. Ser.: Earth Environ. Sci.* **347** 011002

View the [article online](#) for updates and enhancements.

**6th International Conference Sustainable Agriculture, Food,
and Energy (SAFE2018). October 19-21, 2018
I'M Hotel, Makati. MANILA, PHILIPPINES**



LIST OF COMMITTEE, SAFE2019**Patron**

Prof. Dr. Tafdil Husni	<i>The Rector of Andalas University. Indonesia.</i>
Dr. Honorio Soriano	<i>The President of Pampanga State Agricultural University (PSAU). The Philippines,</i>
Rolando de Asis, PhD	<i>The President of Central Bicol State University of Agriculture (CBSUA). The Philippines,</i>
Dr. Baldwin G. Jallorina	<i>Director IV of Philippines Center for Postharvest and Mechanization (PhilMech). The Philippines</i>

Executive Chairman

Prof. Dr. Novizar Nazir	<i>Andalas University-INDONESIA</i>
-------------------------	-------------------------------------

Local Conference Coordinator

Norman G. De Jesus, Ph.D	<i>Director, PSAU-ALIAS R&DE Center. Pampanga State Agricultural University-Magalang, Pampanga, Philippines</i>
--------------------------	---

Conference Secretary

Dr. Helen Martinez	<i>The Philippines Center for Postharvest and Mechanization (PhilMech). Philippines</i>
--------------------	---

Advisory Committee

Dr. Paul Kristiansen- <i>University of New England, AUSTRALIA (Co-ordinator)</i>
Dr. Lili Nurlaili, <i>Indonesian Attache on Education and Culture (Philippines)</i>
Prof. Dr. Hj. Khudzir Bin Hj Ismail, <i>Dean of Faculty of Applied Science. UiTM, MALAYSIA</i>
Prof. Dr. Nguyen Hay- <i>Nong lam University Ho Chi Minh City-VIETNAM</i>
Dr. Yunardi Yusuf-Syiah <i>Kuala University-INDONESIA</i>
Prof. dr. Dewa Putu Widjana, DAP&E. Sp.Par.K- <i>Warmadewa University-INDONESIA</i>
Prof.Dr. Bohari M Yamin, <i>Universiti Kebangsaan Malaysia, MALAYSIA</i>
Prof.Dr. Masateru Senge, <i>Gifu University, JAPAN</i>
Prof. Dr. Wan Mohtar Wan Yusoff- <i>Universiti Kebangsaan Malaysia, MALAYSIA</i>
Prof.Dr. Wan Azizah Hanom Ahmad, <i>UiTM, Malaysia</i>

Steering Committee

Prof. Dr. Helmi- <i>Andalas University-INDONESIA (Co-ordinator)</i>
Assoc. Prof. Dr. Nurul Huda- <i>SAFE-Network Country Co-ordinator (Malaysia)</i>
Prof. P.M.C.C de Silva, PhD, <i>SAFE-Network Country Co-ordinator (SRI LANKA)</i>
Assoc.Prof. Keng-Tung Wu, PhD, <i>SAFE-Network Country Co-ordinator (TAIWAN)</i>
Prof. Dr. Fauzan Azima - <i>Andalas University-INDONESIA.</i>
Dr. Munzir Busniah- <i>Andalas University-INDONESIA.</i>
Prof. Dr. Amitava Basu- <i>Bidhan Chandra Krishi Vidyalaya, INDIA</i>
Prof. Nasser Aliasghar zad- <i>Faculty of Agriculture. The University of Tabriz-Iran.</i>
Assoc.Prof. Nguyen Huy Bich, Ph.D- <i>Nong Lam University Ho Chi Minh City-VIETNAM</i>
Prof. Kohei NAKANO, Ph.D.- <i>Gifu University-JAPAN</i>
Prof. Dr. MD MIZANUR RAHMAN BHUIYAN, <i>Khulna University-BANGLADESH</i>
Dr. Ir. Ujang Paman Ismail, MSc. <i>Universitas Islam Riau-INDONESIA</i>

Scientific Committee

Prof. Dr. Novizar Nazir, *Andalas University, INDONESIA*
 Prof. Dr. Takashi Oku-Prefectural University of Hiroshima, JAPAN
 Dr. Muhammad Ishfaq Khan, *The University of Agriculture Peshawar. PAKISTAN*
 Prof. Dr. Nurpilihan Bafdal, *Padjadjaran University-INDONESIA*
 Prof. Dr. Roostita Balia, *Padjadjaran University-INDONESIA*
 Prof. Dr. Bohari M Yamin, *Universiti Sains Islam Malaysia, USIM. Malaysia*
 Assoc. Prof. Dr. Azwani Mohd. Lazim, *Universiti Kebangsaan Malaysia, UPM. Malaysia*
 Assoc. Prof. Dr. Nurul Huda– *UniSZA, Malaysia*
 Dr. Ario Beta Juanssilfero, M.Eng– *LIPI-INDONESIA*
 Rahmat Hidayat, ST, M.Sc.IT– *IJASEIT/State Polytechnic of Padang –INDONESIA*
 Dr. Febri Doni, *Universiti Mayala/SRI-Mas, Malaysia*
 Dr. Amelia Nicolas, *CBSUA. Philippines*

Reviewers

Prof. Dr. Novizar Nazir, *Andalas University-INDONESIA*
 Prof. Dr. Nobutaka Ito, *Chiang Mai University-THAILAND*
 Dr. Norman de Jesus, *Pampanga State Agricultural University-PHILIPPINES*
 Prof. Dr. Bohari M Yamin, *Universiti Sains Islam Malaysi-MALAYSIA*
 Dr. Febri Doni, *Universiti Malaya-MALAYSIA*
 Dr. Azwani Mat Lazim, *Universiti Kebangsaan Malaysia-MALAYSIA*
 Robbi Rahim, *Universiti Malaysia Perlis-MALAYSIA*
 Rahmat Hidayat, *Politeknik Negeri Padang-INDONESIA*

Organizing Committee

Ass.Prof. Hanylin Hidalgo	CBSUA	Philippines
Dr. Amelia Nicolas	CBSUA	Philippines
Richard Castor	CBSUA	Philippines
Ma Teresa Lirag	CBSUA	Philippines
Presbel Presto	CBSUA	Philippines
Alicia Z. Maghuyop	CBSUA	Philippines
Michael A. Gragasin	PhilMech	Philippines
Bezt Zee Magararu	PhilMech	Philippines
Jett Molech Subaba	PhilMech	Philippines
Danilo Esteves	PhilMech	Philippines
Rosalie Feliciano	PhilMech	Philippines
Prof. Angelina de Jesus	PSAU	Philippines
Prof. Estrella Zabala	PSAU	Philippines
Prof. Regina Loria	PSAU	Philippines
Emmanuel Pangilinan	PSAU	Philippines

SAFE-Network Regional Secretariat

Dr. Irawati Chaniago, *Andalas University-INDONESIA*
 Anak Agung Sagung Putri Risa Andriani, *Warmadewa University. INDONESIA*
 Dr. Wahyudi David – *Bakrie University-INDONESIA*
 Dr. Wiwik Hardaningsih, *Agriculture Polytechnic of Payakumbuh. INDONESIA*
 Aisman Rasjinin, *MSc–Andalas University-INDONESIA*
 Dr. Febri Doni, *Universiti Kebangsaan Malaysia*
 Abzar Khan, *Universiti Kebangsaan Malaysia*
 Rahmat Hidayat, ST, M.Sc.IT– *State Polytechnic of Padang –INDONESIA*
 Muhammad Iqbal Syuhada, *Andalas University-INDONESIA*
 Dr. Ni Luh Suriani– *Universitas Udayana-INDONESIA*

Table of contents

Volume 347

2019

[Previous issue](#)[Next issue](#)

6th International Conference on Sustainable Agriculture, Food and Energy 18–21 October 2018, Manila, The Philippines

Accepted papers received: 11 September 2019

Published online: 11 November 2019

[Open all abstracts, in this issue](#)

Preface

011001

THE FOLLOWING ARTICLE IS OPEN ACCESS

[6th International Conference Sustainable Agriculture, Food, and Energy \(SAFE2018\). October 19-21, 2018 I'M Hotel, Makati. MANILA, PHILIPPINES](#)

[Open abstract](#), 6th International Conference Sustainable Agriculture, Food, and Energy (SAFE2018). October 19-21, 2018 I'M Hotel, Makati. MANILA, PHILIPPINES [View article](#), 6th International Conference Sustainable Agriculture, Food, and Energy (SAFE2018). October 19-21, 2018 I'M Hotel, Makati. MANILA, PHILIPPINES [PDF](#), 6th International Conference Sustainable Agriculture, Food, and Energy (SAFE2018). October 19-21, 2018 I'M Hotel, Makati. MANILA, PHILIPPINES

011002

THE FOLLOWING ARTICLE IS OPEN ACCESS

[LIST OF COMMITTEE](#)

[Open abstract](#), LIST OF COMMITTEE [View article](#), LIST OF COMMITTEE [PDF](#), LIST OF COMMITTEE

011003

THE FOLLOWING ARTICLE IS OPEN ACCESS

[Peer review statement](#)

[Open abstract](#), Peer review statement [View article](#), Peer review statement [PDF](#), Peer review statement

Papers

Innovation on Sustainability related to Agriculture, Food, and Energy

012001

THE FOLLOWING ARTICLE IS OPEN ACCESS

[The Growth of Native Yeasts on Mozzarella Cheese Whey with the Resistance towards High Glucose and Ethanol Contents](#)

R. L. Balia, L. Suryaningsih, A. Pratama and G. L. Utama

[Open abstract](#), [The Growth of Native Yeasts on Mozzarella Cheese Whey with the Resistance towards High Glucose and Ethanol Contents](#) [View article](#), [The Growth of Native Yeasts on Mozzarella Cheese Whey with the Resistance towards High Glucose and Ethanol Contents](#) [PDF](#), [The Growth of Native Yeasts on Mozzarella Cheese Whey with the Resistance towards High Glucose and Ethanol Contents](#)

012002

THE FOLLOWING ARTICLE IS OPEN ACCESS

[Identification of Endophytic and Rhizosphere Bacteria in Maize \(*Zea mays* L.\) in Limapuluh Kota Region, West Sumatra, Indonesia](#)

Y Sondang, K Anty and R Siregar

[Open abstract](#), [Identification of Endophytic and Rhizosphere Bacteria in Maize \(*Zea mays* L.\) in Limapuluh Kota Region, West Sumatra, Indonesia](#) [View article](#), [Identification of Endophytic and Rhizosphere Bacteria in Maize \(*Zea mays* L.\) in Limapuluh Kota Region, West Sumatra, Indonesia](#) [PDF](#), [Identification of Endophytic and Rhizosphere Bacteria in Maize \(*Zea mays* L.\) in Limapuluh Kota Region, West Sumatra, Indonesia](#)

012003

THE FOLLOWING ARTICLE IS OPEN ACCESS

[Selection and Evaluation of Several BC2F2 Rice Accession Tolerance to Submergence Stress and Backcrossing to Local Parent](#)

Mery Hasmeda, Entis S. Halimi, Harman Hamidson and Rizky Yudhan Guswari

[Open abstract](#), [Selection and Evaluation of Several BC2F2 Rice Accession Tolerance to Submergence Stress and Backcrossing to Local Parent](#) [View article](#), [Selection and Evaluation of Several BC2F2 Rice Accession Tolerance to Submergence Stress and Backcrossing to Local Parent](#) [PDF](#), [Selection and Evaluation of Several BC2F2 Rice Accession Tolerance to Submergence Stress and Backcrossing to Local Parent](#)

012004

THE FOLLOWING ARTICLE IS OPEN ACCESS

[Yield test of 13 accession groups of Yam \(*Dioscorea alata* L.\) on three various agroecology](#)

Wuryantoro, R Mustika Wardhani and I Rekyani Puspitawati

[Open abstract](#), [Yield test of 13 accession groups of Yam \(*Dioscorea alata* L.\) on three various agroecology](#) [View article](#), [Yield test of 13 accession groups of Yam \(*Dioscorea alata* L.\) on three various agroecology](#) [PDF](#), [Yield test of 13 accession groups of Yam \(*Dioscorea alata* L.\) on three various agroecology](#)

012005

THE FOLLOWING ARTICLE IS OPEN ACCESS

[Vegetation analysis of highland tropical rainforest in the conservation area](#)

Djoko Setyo Martono, Sri Rahayu and Endry Wijayanti

[Open abstract](#), [Vegetation analysis of highland tropical rainforest in the conservation area](#) [View article](#), [Vegetation analysis of highland tropical rainforest in the conservation area](#) [PDF](#), [Vegetation analysis of highland tropical rainforest in the conservation area](#)

012006

THE FOLLOWING ARTICLE IS OPEN ACCESS

[Phosphorus Uptakes and Yields of Sweet Corn Grown under Organic Production System](#)

Fahrurrozi Fahrurrozi, Zainal Mukhtar, Sigit Sudjatmiko, Mohammad Chozin and Nanik Setyowati
[Open abstract](#), [Phosphorus Uptakes and Yields of Sweet Corn Grown under Organic Production System View article](#), [Phosphorus Uptakes and Yields of Sweet Corn Grown under Organic Production System PDF](#), [Phosphorus Uptakes and Yields of Sweet Corn Grown under Organic Production System](#)

012007

THE FOLLOWING ARTICLE IS OPEN ACCESS

[Variability in growth and yield among sweet corn genotypes grown under organic crop management](#)

M Chozin, S Sudjatmiko, Z Mukhtar, N Setyowati and F Fahrurrozi
[Open abstract](#), [Variability in growth and yield among sweet corn genotypes grown under organic crop management View article](#), [Variability in growth and yield among sweet corn genotypes grown under organic crop management PDF](#), [Variability in growth and yield among sweet corn genotypes grown under organic crop management](#)

012008

THE FOLLOWING ARTICLE IS OPEN ACCESS

[Viability Spermatozoa Epididymis of Buffalo \(*Bubalus Bubalis*\) In Fertilized Media to Additional Serum at Temperature 5°C](#)

Harissatria, D. Surtina, T. Astuti, Jaswandi and Hendri
[Open abstract](#), [Viability Spermatozoa Epididymis of Buffalo \(*Bubalus Bubalis*\) In Fertilized Media to Additional Serum at Temperature 5°C View article](#), [Viability Spermatozoa Epididymis of Buffalo \(*Bubalus Bubalis*\) In Fertilized Media to Additional Serum at Temperature 5°C PDF](#), [Viability Spermatozoa Epididymis of Buffalo \(*Bubalus Bubalis*\) In Fertilized Media to Additional Serum at Temperature 5°C](#)

012009

THE FOLLOWING ARTICLE IS OPEN ACCESS

[Biology of *Eocanthecona furcellata* \(Wolff\) \(Hemiptera: Pentatomidae\) Predator Nettle Caterpillar *Setora nitens* Walker Origin from Riau](#)

Rusli Rustam, Herman and Muhammad Abdul Gani
[Open abstract](#), [Biology of *Eocanthecona furcellata* \(Wolff\) \(Hemiptera: Pentatomidae\) Predator Nettle Caterpillar *Setora nitens* Walker Origin from Riau View article](#), [Biology of *Eocanthecona furcellata* \(Wolff\) \(Hemiptera: Pentatomidae\) Predator Nettle Caterpillar *Setora nitens* Walker Origin from Riau PDF](#), [Biology of *Eocanthecona furcellata* \(Wolff\) \(Hemiptera: Pentatomidae\) Predator Nettle Caterpillar *Setora nitens* Walker Origin from Riau](#)

012010

THE FOLLOWING ARTICLE IS OPEN ACCESS

[The Effect of Using Some Kind of Manure on the Content of Dry Matter, Organic Matter and Crude Protein of Elephant Grass Cv. Taiwan \(*Pennisetum purpureum*\) on the First Harvest](#)

D. Surtina, R.M. Sari, T. Astuti and A.H. Kusuma
[Open abstract](#), [The Effect of Using Some Kind of Manure on the Content of Dry Matter, Organic Matter and Crude Protein of Elephant Grass Cv. Taiwan \(*Pennisetum purpureum*\) on the First Harvest View article](#), [The Effect of Using Some Kind of Manure on the Content of Dry Matter, Organic Matter and Crude Protein of Elephant Grass Cv. Taiwan \(*Pennisetum purpureum*\) on the First Harvest PDF](#), [The Effect of Using Some Kind of Manure on the Content of Dry Matter, Organic Matter and Crude Protein of Elephant Grass Cv. Taiwan \(*Pennisetum purpureum*\) on the First Harvest](#)

012011

THE FOLLOWING ARTICLE IS OPEN ACCESS

[Milk Production and Quality of Dairy Cow Fed Diet Containing Concentrate with *Durio zibethinus* Murr Seed Flour](#)

Endang Sulistyowati, Edi Soetrisno, Sigit Mujiharjo, Dwi E. Lorence, Emilia Gustia and Siska Meisella [Open abstract](#), Milk Production and Quality of Dairy Cow Fed Diet Containing Concentrate with *Durio zibethinus* Murr Seed Flour [View article](#), Milk Production and Quality of Dairy Cow Fed Diet Containing Concentrate with *Durio zibethinus* Murr Seed Flour [PDF](#), Milk Production and Quality of Dairy Cow Fed Diet Containing Concentrate with *Durio zibethinus* Murr Seed Flour

012012

THE FOLLOWING ARTICLE IS OPEN ACCESS

[The Effect of Sorghum Flour \(*Sorghum bicolor* L. Moench\) Addition to Characteristic Quality of Goat Milk Sinbiotic Yoghurt Candidate](#)

Een Sukarminah, Indira Lanti, Endah Wulandari, Elazmanawati Lembong and Ratih Utami [Open abstract](#), The Effect of Sorghum Flour (*Sorghum bicolor* L. Moench) Addition to Characteristic Quality of Goat Milk Sinbiotic Yoghurt Candidate [View article](#), The Effect of Sorghum Flour (*Sorghum bicolor* L. Moench) Addition to Characteristic Quality of Goat Milk Sinbiotic Yoghurt Candidate [PDF](#), The Effect of Sorghum Flour (*Sorghum bicolor* L. Moench) Addition to Characteristic Quality of Goat Milk Sinbiotic Yoghurt Candidate

012013

THE FOLLOWING ARTICLE IS OPEN ACCESS

[The Analysis of Strategic Partnership to Supply Mandailing Arabica Coffee for Export Quality Markets](#)

Erin Siregar, Novizar Nazir and Alfi Asben [Open abstract](#), The Analysis of Strategic Partnership to Supply Mandailing Arabica Coffee for Export Quality Markets [View article](#), The Analysis of Strategic Partnership to Supply Mandailing Arabica Coffee for Export Quality Markets [PDF](#), The Analysis of Strategic Partnership to Supply Mandailing Arabica Coffee for Export Quality Markets

012014

THE FOLLOWING ARTICLE IS OPEN ACCESS

[Testosterone level and mating capability of male rabbit fed commercial feed substituted with *moringa oleifera* leaf meal](#)

N M R Suarni, I G L Oka, I G Mahardika and I P Suyadnya [Open abstract](#), Testosterone level and mating capability of male rabbit fed commercial feed substituted with *moringa oleifera* leaf meal [View article](#), Testosterone level and mating capability of male rabbit fed commercial feed substituted with *moringa oleifera* leaf meal [PDF](#), Testosterone level and mating capability of male rabbit fed commercial feed substituted with *moringa oleifera* leaf meal

012015

THE FOLLOWING ARTICLE IS OPEN ACCESS

[The Use of *Melastoma malabatricum* and *Manihot esculenta* extract as natural anthelmintic on the Performance of Kacang goat](#)

Tatik Suteky and Dwatmadji [Open abstract](#), The Use of *Melastoma malabatricum* and *Manihot esculenta* extract as natural anthelmintic on the Performance of Kacang goat [View article](#), The Use of *Melastoma malabatricum* and *Manihot esculenta*

extract as natural anthelmintic on the Performance of Kacang goat [PDF](#), The Use of Melastoma malabatricum and Manihot esculenta extract as natural anthelmintic on the Performance of Kacang goat

012016

THE FOLLOWING ARTICLE IS OPEN ACCESS

[The Effect of Protected Soybean Oil and Soybean Groats Base on in Vitro Dry Matter Digestibility, in Vitro Organic Matter Digestibility in the Rumen and Post Rumen](#)

A Pramono, R. F. Hadi, J. Sutrisno and M. Cahyadi

[Open abstract](#), The Effect of Protected Soybean Oil and Soybean Groats Base on in Vitro Dry Matter Digestibility, in Vitro Organic Matter Digestibility in the Rumen and Post Rumen [View article](#), The Effect of Protected Soybean Oil and Soybean Groats Base on in Vitro Dry Matter Digestibility, in Vitro Organic Matter Digestibility in the Rumen and Post Rumen [PDF](#), The Effect of Protected Soybean Oil and Soybean Groats Base on in Vitro Dry Matter Digestibility, in Vitro Organic Matter Digestibility in the Rumen and Post Rumen

012017

THE FOLLOWING ARTICLE IS OPEN ACCESS

[Optimization of hydroponic technology for production of mycorrhiza biofertilizer](#)

A Nurbaity, N Istifadah, B A Haryantini, M F Ilhami, M I Habibullah and M Arifin

[Open abstract](#), Optimization of hydroponic technology for production of mycorrhiza biofertilizer [View article](#), Optimization of hydroponic technology for production of mycorrhiza biofertilizer [PDF](#), Optimization of hydroponic technology for production of mycorrhiza biofertilizer

012018

THE FOLLOWING ARTICLE IS OPEN ACCESS

[Using bio-starter to increase growth and production of hortensia flower \(*Hydangea* sp\)](#)

Ni Luh Suriani, Made Ni Susun Parwanayoni, Ni Wayan Sudatri and Ni Made Suartini

[Open abstract](#), Using bio-starter to increase growth and production of hortensia flower (*Hydangea* sp) [View article](#), Using bio-starter to increase growth and production of hortensia flower (*Hydangea* sp) [PDF](#), Using bio-starter to increase growth and production of hortensia flower (*Hydangea* sp)

012019

THE FOLLOWING ARTICLE IS OPEN ACCESS

[Moringa Seeds \(*Moringa olifera* L.\) Application as Natural Coagulant in Coffee Wastewater Treatment](#)

Elida Novita, Sri Wahyuningsih, Hendra Andiananta Pradana, Wendy Dreifyana Marsut and Akhmad Farisul F

[Open abstract](#), Moringa Seeds (*Moringa olifera* L.) Application as Natural Coagulant in Coffee Wastewater Treatment [View article](#), Moringa Seeds (*Moringa olifera* L.) Application as Natural Coagulant in Coffee Wastewater Treatment [PDF](#), Moringa Seeds (*Moringa olifera* L.) Application as Natural Coagulant in Coffee Wastewater Treatment

012020

THE FOLLOWING ARTICLE IS OPEN ACCESS

[Effect of Shelf Life on the Quality of Fried Sambal \(Condiments of Instant Uduk Rice\)](#)

Asrul Bahar and Dwi Kristiastuti Suwardiah

[Open abstract](#), Effect of Shelf Life on the Quality of Fried Sambal (Condiments of Instant Uduk Rice) [View article](#), Effect of Shelf Life on the Quality of Fried Sambal (Condiments of Instant Uduk Rice) [PDF](#), Effect of Shelf Life on the Quality of Fried Sambal (Condiments of Instant Uduk Rice)

012021

THE FOLLOWING ARTICLE IS OPEN ACCESS

[Storability of Seaweed Jelly Candy based on Chemical, Physical and Microbiology Characteristics](#)

Rita Ismawati, Ita Fatkhur Romadhoni, Q.T Nurul and S.T Ratna

[Open abstract](#), [Storability of Seaweed Jelly Candy based on Chemical, Physical and Microbiology Characteristics](#) [View article](#), [Storability of Seaweed Jelly Candy based on Chemical, Physical and Microbiology Characteristics](#) [PDF](#), [Storability of Seaweed Jelly Candy based on Chemical, Physical and Microbiology Characteristics](#)

012022

THE FOLLOWING ARTICLE IS OPEN ACCESS

[Exploration of indigenous rhizobacteria: in search for their potential as plant growth promoting bacteria at two potato producing areas in West Sumatra](#)

I Chaniago, Warnita and Z Resti

[Open abstract](#), [Exploration of indigenous rhizobacteria: in search for their potential as plant growth promoting bacteria at two potato producing areas in West Sumatra](#) [View article](#), [Exploration of indigenous rhizobacteria: in search for their potential as plant growth promoting bacteria at two potato producing areas in West Sumatra](#) [PDF](#), [Exploration of indigenous rhizobacteria: in search for their potential as plant growth promoting bacteria at two potato producing areas in West Sumatra](#)

012023

THE FOLLOWING ARTICLE IS OPEN ACCESS

[Rats testosterone level and reproductive organ weight treated by kapok \(*Ceiba pentandra* Gaertn.\) seed extract](#)

N I Wiratmini, I Setyawati and I Narayani

[Open abstract](#), [Rats testosterone level and reproductive organ weight treated by kapok \(*Ceiba pentandra* Gaertn.\) seed extract](#) [View article](#), [Rats testosterone level and reproductive organ weight treated by kapok \(*Ceiba pentandra* Gaertn.\) seed extract](#) [PDF](#), [Rats testosterone level and reproductive organ weight treated by kapok \(*Ceiba pentandra* Gaertn.\) seed extract](#)

012024

THE FOLLOWING ARTICLE IS OPEN ACCESS

[Involvement of Jasmonic Acid in the Induced Systemic Resistance of Tomato against *Ralstonia syzigii* sp. indonesiensis by Indigenous Endophyte Bacteria](#)

Yulmira Yanti, Warnita and Reflin

[Open abstract](#), [Involvement of Jasmonic Acid in the Induced Systemic Resistance of Tomato against *Ralstonia syzigii* sp. indonesiensis by Indigenous Endophyte Bacteria](#) [View article](#), [Involvement of Jasmonic Acid in the Induced Systemic Resistance of Tomato against *Ralstonia syzigii* sp. indonesiensis by Indigenous Endophyte Bacteria](#) [PDF](#), [Involvement of Jasmonic Acid in the Induced Systemic Resistance of Tomato against *Ralstonia syzigii* sp. indonesiensis by Indigenous Endophyte Bacteria](#)

012025

THE FOLLOWING ARTICLE IS OPEN ACCESS

[Estrogen Level in Female Local Rabbit Fed Commercial Cod Liver Oil Supplementation](#)

N G A M Ermayanti, I B M Suaskara, I Setyawati, N M R Suarni and I G A M Widhyastini

[Open abstract](#), [Estrogen Level in Female Local Rabbit Fed Commercial Cod Liver Oil Supplementation](#) [View article](#), [Estrogen Level in Female Local Rabbit Fed Commercial Cod Liver Oil Supplementation](#) [PDF](#), [Estrogen Level in Female Local Rabbit Fed Commercial Cod Liver Oil Supplementation](#)

012026

THE FOLLOWING ARTICLE IS OPEN ACCESS

[Effect of Indigenous Endophytic Bacteria on Growth of Palm Oil Seedlings \(*Elaeis guineensis* Jacq\) In The Nursery](#)

Reni Mayerni, Warnita, Yuliatrri, Sari Rukmana and Okta Sagita Chan

[Open abstract](#), [Effect of Indigenous Endophytic Bacteria on Growth of Palm Oil Seedlings \(*Elaeis guineensis* Jacq\) In The Nursery](#) [View article](#), [Effect of Indigenous Endophytic Bacteria on Growth of Palm Oil Seedlings \(*Elaeis guineensis* Jacq\) In The Nursery](#) [PDF](#), [Effect of Indigenous Endophytic Bacteria on Growth of Palm Oil Seedlings \(*Elaeis guineensis* Jacq\) In The Nursery](#)

012027

THE FOLLOWING ARTICLE IS OPEN ACCESS

[Optimizing Quality of White Oyster Mushroom Seeds Through Plant Propagation](#)

S Rahayu and D S Martono

[Open abstract](#), [Optimizing Quality of White Oyster Mushroom Seeds Through Plant Propagation](#) [View article](#), [Optimizing Quality of White Oyster Mushroom Seeds Through Plant Propagation](#) [PDF](#), [Optimizing Quality of White Oyster Mushroom Seeds Through Plant Propagation](#)

012028

THE FOLLOWING ARTICLE IS OPEN ACCESS

[Value Added Analysis of Yard-Based Agroindustry for Food Security](#)

R M Wardhani, Wuryantoro and P G Adinurani

[Open abstract](#), [Value Added Analysis of Yard-Based Agroindustry for Food Security](#) [View article](#), [Value Added Analysis of Yard-Based Agroindustry for Food Security](#) [PDF](#), [Value Added Analysis of Yard-Based Agroindustry for Food Security](#)

012029

THE FOLLOWING ARTICLE IS OPEN ACCESS

[The Effect of Squalene Addition In-Vitro to Increase Asiaticoside Hairy Root Culture of *Centella Asiatica* \(L.\) Urban](#)

Zahanis

[Open abstract](#), [The Effect of Squalene Addition In-Vitro to Increase Asiaticoside Hairy Root Culture of *Centella Asiatica* \(L.\) Urban](#) [View article](#), [The Effect of Squalene Addition In-Vitro to Increase Asiaticoside Hairy Root Culture of *Centella Asiatica* \(L.\) Urban](#) [PDF](#), [The Effect of Squalene Addition In-Vitro to Increase Asiaticoside Hairy Root Culture of *Centella Asiatica* \(L.\) Urban](#)

012030

THE FOLLOWING ARTICLE IS OPEN ACCESS

[Challenges in Molecular Identification of Endomycorrhizal Fungi from Rhizosphere of Cashew Plant](#)

Made Pharmawati and Meitini Wahyuni Proborini

[Open abstract](#), [Challenges in Molecular Identification of Endomycorrhizal Fungi from Rhizosphere of Cashew Plant](#) [View article](#), [Challenges in Molecular Identification of Endomycorrhizal Fungi from Rhizosphere of Cashew Plant](#) [PDF](#), [Challenges in Molecular Identification of Endomycorrhizal Fungi from Rhizosphere of Cashew Plant](#)

012031

THE FOLLOWING ARTICLE IS OPEN ACCESS

[Isolation and Identification of Lactic Acid Bacteria Producing Biopreservative Bacteriosin from Smoked Fish](#)

Tita Rialita, Een Sukarminah, Try Yuliana, Debby Moody Sumanti, Intan Kurnianingriem, Fanny Nur Octaviani, Marcellia Bella Santoso and Heditia Febby Susanto

[Open abstract](#), Isolation and Identification of Lactic Acid Bacteria Producing Biopreservative Bacteriosin from Smoked Fish [View article](#), Isolation and Identification of Lactic Acid Bacteria Producing Biopreservative Bacteriosin from Smoked Fish [PDF](#), Isolation and Identification of Lactic Acid Bacteria Producing Biopreservative Bacteriosin from Smoked Fish

012032

THE FOLLOWING ARTICLE IS OPEN ACCESS

[Identification of GH Gene Polymorphisms and Their Association with Body Weight in Bayang Duck, Local Duck from West Sumatra, Indonesia](#)

Yurnalis, Arnim, Dino Eka Putra, Zulkarnaini Kamsa and Tinda Afriani

[Open abstract](#), Identification of GH Gene Polymorphisms and Their Association with Body Weight in Bayang Duck, Local Duck from West Sumatra, Indonesia [View article](#), Identification of GH Gene Polymorphisms and Their Association with Body Weight in Bayang Duck, Local Duck from West Sumatra, Indonesia [PDF](#), Identification of GH Gene Polymorphisms and Their Association with Body Weight in Bayang Duck, Local Duck from West Sumatra, Indonesia

012033

THE FOLLOWING ARTICLE IS OPEN ACCESS

[Identification of Non Timber Forest Product Use of Canarium Nut \(*Canarium Sp*\) in Makian Island](#)

Abdul Kadir Kamaluddin and Hamidin Rasulu

[Open abstract](#), Identification of Non Timber Forest Product Use of Canarium Nut (*Canarium Sp*) in Makian Island [View article](#), Identification of Non Timber Forest Product Use of Canarium Nut (*Canarium Sp*) in Makian Island [PDF](#), Identification of Non Timber Forest Product Use of Canarium Nut (*Canarium Sp*) in Makian Island

012034

THE FOLLOWING ARTICLE IS OPEN ACCESS

[Properties of Ethanolysis Product from Ketapang Seed Oil \(*Terminalia Catappa* Linn\) Incorporated in Mucoadhesive Patch Film](#)

Miksusanti, Herlina, A.N Fithri and Ferlinahayati

[Open abstract](#), Properties of Ethanolysis Product from Ketapang Seed Oil (*Terminalia Catappa* Linn) Incorporated in Mucoadhesive Patch Film [View article](#), Properties of Ethanolysis Product from Ketapang Seed Oil (*Terminalia Catappa* Linn) Incorporated in Mucoadhesive Patch Film [PDF](#), Properties of Ethanolysis Product from Ketapang Seed Oil (*Terminalia Catappa* Linn) Incorporated in Mucoadhesive Patch Film

012035

THE FOLLOWING ARTICLE IS OPEN ACCESS

[The effect of organic mineral supplementation in the ration with total mixed fiber ammoniation as basal feed to rumen environment](#)

A Imsya, Yuanita Windusari and Riswandi

[Open abstract](#), The effect of organic mineral supplementation in the ration with total mixed fiber ammoniation as basal feed to rumen environment [View article](#), The effect of organic mineral supplementation in the ration

with total mixed fiber ammoniation as basal feed to rumen environment [PDF](#), The effect of organic mineral supplementation in the ration with total mixed fiber ammoniation as basal feed to rumen environment

012036

THE FOLLOWING ARTICLE IS OPEN ACCESS

[Influence of Liquid Smoke Cinnamon Against Attacks Leaf Rot Disease \(*Phytophthora Infestans*\) on Potato \(*Solanum Tuberosum* L.\)](#)

I Ketut Budaraga, Tukiran and Syamsuwirman

[Open abstract](#), Influence of Liquid Smoke Cinnamon Against Attacks Leaf Rot Disease (Phytophthora Infestans) on Potato (Solanum Tuberosum L.) [View article](#), Influence of Liquid Smoke Cinnamon Against Attacks Leaf Rot Disease (Phytophthora Infestans) on Potato (Solanum Tuberosum L.) [PDF](#), Influence of Liquid Smoke Cinnamon Against Attacks Leaf Rot Disease (Phytophthora Infestans) on Potato (Solanum Tuberosum L.)

012037

THE FOLLOWING ARTICLE IS OPEN ACCESS

[The Principle of good items as a legal protection instrument of food and beverage brand holders in Indonesia](#)

Ni Luh Made Mahendrawati, I Wayan Wesna Astara and IB Gede Agustya Mahaputra

[Open abstract](#), The Principle of good items as a legal protection instrument of food and beverage brand holders in Indonesia [View article](#), The Principle of good items as a legal protection instrument of food and beverage brand holders in Indonesia [PDF](#), The Principle of good items as a legal protection instrument of food and beverage brand holders in Indonesia

012038

THE FOLLOWING ARTICLE IS OPEN ACCESS

[Spermatozoa Quality of Young Male White Rat after Treated with *Moringa oleifera* Leaf Extract](#)

I B M Suaskara, M Joni and I Setyawati

[Open abstract](#), Spermatozoa Quality of Young Male White Rat after Treated with Moringa oleifera Leaf Extract [View article](#), Spermatozoa Quality of Young Male White Rat after Treated with Moringa oleifera Leaf Extract [PDF](#), Spermatozoa Quality of Young Male White Rat after Treated with Moringa oleifera Leaf Extract

012039

THE FOLLOWING ARTICLE IS OPEN ACCESS

[Analysis of Management, Technology and Quality of Coffee Bean in West Sumatera](#)

Gunarif Taib and Purnama Dini Hari

[Open abstract](#), Analysis of Management, Technology and Quality of Coffee Bean in West Sumatera [View article](#), Analysis of Management, Technology and Quality of Coffee Bean in West Sumatera [PDF](#), Analysis of Management, Technology and Quality of Coffee Bean in West Sumatera

012040

THE FOLLOWING ARTICLE IS OPEN ACCESS

[Changes in Soil Chemical and Physical Properties of Andisols under Oil Palm Small holder in the West Pasaman District of West Sumatra](#)

Bujang Rusman, Agustian and Aprisal

[Open abstract](#), Changes in Soil Chemical and Physical Properties of Andisols under Oil Palm Small holder in the West Pasaman District of West Sumatra [View article](#), Changes in Soil Chemical and Physical Properties of Andisols under Oil Palm Small holder in the West Pasaman District of West Sumatra [PDF](#), Changes in Soil

Chemical and Physical Properties of Andisols under Oil Palm Small holder in the West Pasaman District of West Sumatra

012041

THE FOLLOWING ARTICLE IS OPEN ACCESS

[Toward Achieving Self-Sufficiency Livestock](#)

Ni Made Ayu Gemuh Astiti Rasa

[Open abstract](#), [Toward Achieving Self-Sufficiency Livestock View article](#), [Toward Achieving Self-Sufficiency Livestock PDF](#), [Toward Achieving Self-Sufficiency Livestock](#)

012042

THE FOLLOWING ARTICLE IS OPEN ACCESS

[West Sumatera brown rice genotypes resistance to Aluminium in early growth phase](#)

Indra Dwipa, Ardi and Nike Vorinda

[Open abstract](#), [West Sumatera brown rice genotypes resistance to Aluminium in early growth phase View article](#), [West Sumatera brown rice genotypes resistance to Aluminium in early growth phase PDF](#), [West Sumatera brown rice genotypes resistance to Aluminium in early growth phase](#)

012043

THE FOLLOWING ARTICLE IS OPEN ACCESS

[Productivity and Intestinal Profile of Boilers fed with Fermented Dragon Fruit Ration](#)

Gusti A.M.Kristina Dewi, I M. Wirapartha, I W. Wijana, I K. Anom Wiyana, D. A. Warmadewi and Budi Rahayu T

[Open abstract](#), [Productivity and Intestinal Profile of Boilers fed with Fermented Dragon Fruit Ration View article](#), [Productivity and Intestinal Profile of Boilers fed with Fermented Dragon Fruit Ration PDF](#), [Productivity and Intestinal Profile of Boilers fed with Fermented Dragon Fruit Ration](#)

012044

THE FOLLOWING ARTICLE IS OPEN ACCESS

[Using bio-starter to increase growth and production of hortensia flower \(*Hydangea sp*\)](#)

Ni Luh Suriani, Ni Made Susun Parwanayoni, Ni Wayan Sudatri and Ni Made Suartini

[Open abstract](#), [Using bio-starter to increase growth and production of hortensia flower \(*Hydangea sp*\) View article](#), [Using bio-starter to increase growth and production of hortensia flower \(*Hydangea sp*\) PDF](#), [Using bio-starter to increase growth and production of hortensia flower \(*Hydangea sp*\)](#)

012045

THE FOLLOWING ARTICLE IS OPEN ACCESS

[Analysis of prospects of crude palm oil \(CPO\) in west Sumatra province](#)

Lisa Nesti, Firwantan, P Shoffiyati and I Ekawati

[Open abstract](#), [Analysis of prospects of crude palm oil \(CPO\) in west Sumatra province View article](#), [Analysis of prospects of crude palm oil \(CPO\) in west Sumatra province PDF](#), [Analysis of prospects of crude palm oil \(CPO\) in west Sumatra province](#)

012046

THE FOLLOWING ARTICLE IS OPEN ACCESS

[The Analysis of Strategic Partnership to Supply Mandailing Arabica Coffee for Export Quality Markets](#)

Erin Siregar, Novizar Nazir and Alfi Asben

[Open abstract](#), [The Analysis of Strategic Partnership to Supply Mandailing Arabica Coffee for Export Quality Markets View article](#), [The Analysis of Strategic Partnership to Supply Mandailing Arabica Coffee for Export](#)

Quality Markets [PDF](#), The Analysis of Strategic Partnership to Supply Mandailing Arabica Coffee for Export Quality Markets

012047

THE FOLLOWING ARTICLE IS OPEN ACCESS

[The Increase in Production Efficiency of Hydroponic Salad \(A Case Study Of Green Oakleaf Lettuce\)](#)

Athiwat Wangmai, Sermkiat Jomjunyong, Suwattantarwong Phanphet, Naphetphan Phanphet and Saowaluk Reungsri

[Open abstract](#), [The Increase in Production Efficiency of Hydroponic Salad \(A Case Study Of Green Oakleaf Lettuce\)](#) [View article](#), [The Increase in Production Efficiency of Hydroponic Salad \(A Case Study Of Green Oakleaf Lettuce\)](#) [PDF](#), [The Increase in Production Efficiency of Hydroponic Salad \(A Case Study Of Green Oakleaf Lettuce\)](#)

012048

THE FOLLOWING ARTICLE IS OPEN ACCESS

[Decontamination of pesticide residues on tangerine fruit using non-thermal plasma technology](#)

C Sawangrat, K Leksakul, D Bonyawan, T Anantana and S Jomjunyong

[Open abstract](#), [Decontamination of pesticide residues on tangerine fruit using non-thermal plasma technology](#) [View article](#), [Decontamination of pesticide residues on tangerine fruit using non-thermal plasma technology](#) [PDF](#), [Decontamination of pesticide residues on tangerine fruit using non-thermal plasma technology](#)

Product Development

012049

THE FOLLOWING ARTICLE IS OPEN ACCESS

[Characteristics of Black Glutinous Rice Vinegar as Traditionally Fermented Product of Yeast Tapai and *Acetobacter aceti*](#)

Novelina, Novizar Nazir, Risa Meutia Fiana and Dian Permana Putra

[Open abstract](#), [Characteristics of Black Glutinous Rice Vinegar as Traditionally Fermented Product of Yeast Tapai and *Acetobacter aceti*](#) [View article](#), [Characteristics of Black Glutinous Rice Vinegar as Traditionally Fermented Product of Yeast Tapai and *Acetobacter aceti*](#) [PDF](#), [Characteristics of Black Glutinous Rice Vinegar as Traditionally Fermented Product of Yeast Tapai and *Acetobacter aceti*](#)

012050

THE FOLLOWING ARTICLE IS OPEN ACCESS

[The effect of probiotic originated from Kumpai Grass Silage to Final Weight, Carcass Percentage and Commercial Carcass Cut of Pegagan duck](#)

L.S Meisji, Darmawan, Y. Fitra, S. Sofia, G. Nuni and R Nasir

[Open abstract](#), [The effect of probiotic originated from Kumpai Grass Silage to Final Weight, Carcass Percentage and Commercial Carcass Cut of Pegagan duck](#) [View article](#), [The effect of probiotic originated from Kumpai Grass Silage to Final Weight, Carcass Percentage and Commercial Carcass Cut of Pegagan duck](#) [PDF](#), [The effect of probiotic originated from Kumpai Grass Silage to Final Weight, Carcass Percentage and Commercial Carcass Cut of Pegagan duck](#)

012051

THE FOLLOWING ARTICLE IS OPEN ACCESS

[Antifungal Activities Of Cinnamon Leaf Extracts Against Sigatoka Fungus \(*Pseudocercospora Fijiensis*\)](#)

Anak Agung Ketut Darmadi, Sang Ketut Sudirga, Ni Luh Suriani and I Gusti Ayu Sugi Wahyuni
[Open abstract](#), Antifungal Activities Of Cinnamon Leaf Extracts Against Sigatoka Fungus (*Pseudocercospora Fijiensis*) [View article](#), Antifungal Activities Of Cinnamon Leaf Extracts Against Sigatoka Fungus (*Pseudocercospora Fijiensis*) [PDF](#), Antifungal Activities Of Cinnamon Leaf Extracts Against Sigatoka Fungus (*Pseudocercospora Fijiensis*)

012052

THE FOLLOWING ARTICLE IS OPEN ACCESS

[Antibiotic potency of *Streptomyces drozdowiczii* on white *Rattus norvegicus* which is infected with *Acinobacter baumannii*](#)

R Kawuri, I B G Darmayasa and C Gading
[Open abstract](#), Antibiotic potency of *Streptomyces drozdowiczii* on white *Rattus norvegicus* which is infected with *Acinobacter baumannii* [View article](#), Antibiotic potency of *Streptomyces drozdowiczii* on white *Rattus norvegicus* which is infected with *Acinobacter baumannii* [PDF](#), Antibiotic potency of *Streptomyces drozdowiczii* on white *Rattus norvegicus* which is infected with *Acinobacter baumannii*

012053

THE FOLLOWING ARTICLE IS OPEN ACCESS

[Antimicrobial activity of lactic acid bacteria isolated from fermented durian flesh \(tempoyak\) against pathogenic and spoilage bacteria during storage](#)

A Nizori, A Sukendra and Surhaini Mursyid
[Open abstract](#), Antimicrobial activity of lactic acid bacteria isolated from fermented durian flesh (tempoyak) against pathogenic and spoilage bacteria during storage [View article](#), Antimicrobial activity of lactic acid bacteria isolated from fermented durian flesh (tempoyak) against pathogenic and spoilage bacteria during storage [PDF](#), Antimicrobial activity of lactic acid bacteria isolated from fermented durian flesh (tempoyak) against pathogenic and spoilage bacteria during storage

012054

THE FOLLOWING ARTICLE IS OPEN ACCESS

[Bioactive compound of *Streptomyces capoamus* as biocontrol of Bacterial Wilt Disease on Banana Plant](#)

R Kawuri and I B G Darmayasa
[Open abstract](#), Bioactive compound of *Streptomyces capoamus* as biocontrol of Bacterial Wilt Disease on Banana Plant [View article](#), Bioactive compound of *Streptomyces capoamus* as biocontrol of Bacterial Wilt Disease on Banana Plant [PDF](#), Bioactive compound of *Streptomyces capoamus* as biocontrol of Bacterial Wilt Disease on Banana Plant

012055

THE FOLLOWING ARTICLE IS OPEN ACCESS

[Application of coconut biochar and organic materials to improve soil environmental](#)

Susila Herlambang, AZ.Purwono Budi S, Heru Tri Sutiono and Susanti Rina N
[Open abstract](#), Application of coconut biochar and organic materials to improve soil environmental [View article](#), Application of coconut biochar and organic materials to improve soil environmental [PDF](#), Application of coconut biochar and organic materials to improve soil environmental

012056

THE FOLLOWING ARTICLE IS OPEN ACCESS

[Effects of *Bacillus thuringiensis*-based bio-insecticides on the presence of *Aphis gossypii* and Coccinellid predators on intercropping cultivation](#)

Yulia Pujiastuti, Irmawati, Arsi Arsi and Dwi Probawati Sulistiyani

[Open abstract](#), Effects of *Bacillus thuringiensis*-based bio-insecticides on the presence of *Aphis gossypii* and Coccinellid predators on intercropping cultivation [View article](#), Effects of *Bacillus thuringiensis*-based bio-insecticides on the presence of *Aphis gossypii* and Coccinellid predators on intercropping cultivation [PDF](#), Effects of *Bacillus thuringiensis*-based bio-insecticides on the presence of *Aphis gossypii* and Coccinellid predators on intercropping cultivation

012057

THE FOLLOWING ARTICLE IS OPEN ACCESS

[The application of biochar in improving the nutrition quality and production of sorghum plant](#)

Ni Made Yudiastari, Ni Ketut Ety Suwitari, Luh Suariani and Yohanes Parlindungan Situmeang

[Open abstract](#), The application of biochar in improving the nutrition quality and production of sorghum plant [View article](#), The application of biochar in improving the nutrition quality and production of sorghum plant [PDF](#), The application of biochar in improving the nutrition quality and production of sorghum plant

012058

THE FOLLOWING ARTICLE IS OPEN ACCESS

[Antifungal activity of leaf extract of *Mansoa alliacea* against *Colletotrichum acutatum* the cause of anthracnose disease on chili pepper](#)

Sang Ketut Sudirga, I Ketut Ginantra and Ida Bagus Gede Darmayasa

[Open abstract](#), Antifungal activity of leaf extract of *Mansoa alliacea* against *Colletotrichum acutatum* the cause of anthracnose disease on chili pepper [View article](#), Antifungal activity of leaf extract of *Mansoa alliacea* against *Colletotrichum acutatum* the cause of anthracnose disease on chili pepper [PDF](#), Antifungal activity of leaf extract of *Mansoa alliacea* against *Colletotrichum acutatum* the cause of anthracnose disease on chili pepper

012059

THE FOLLOWING ARTICLE IS OPEN ACCESS

[Analysis of Fibre Fraction of Palm Oil Frond Fermented with Different Microbes and Soluble Carbohydrates Addition as Ruminant Feeding](#)

T. Astuti, M. Nasir Rofiq, Nurhaita and U. Santoso

[Open abstract](#), Analysis of Fibre Fraction of Palm Oil Frond Fermented with Different Microbes and Soluble Carbohydrates Addition as Ruminant Feeding [View article](#), Analysis of Fibre Fraction of Palm Oil Frond Fermented with Different Microbes and Soluble Carbohydrates Addition as Ruminant Feeding [PDF](#), Analysis of Fibre Fraction of Palm Oil Frond Fermented with Different Microbes and Soluble Carbohydrates Addition as Ruminant Feeding

012060

THE FOLLOWING ARTICLE IS OPEN ACCESS

[Application of Pectin Extracted from Cocoa Pod in the Production of Edible Film](#)

Desniorita, Novizar Nazir, Novelina, Kesuma Sayuti and Jasril

[Open abstract](#), Application of Pectin Extracted from Cocoa Pod in the Production of Edible Film [View article](#), Application of Pectin Extracted from Cocoa Pod in the Production of Edible Film [PDF](#), Application of Pectin Extracted from Cocoa Pod in the Production of Edible Film

012061

THE FOLLOWING ARTICLE IS OPEN ACCESS

[Smart Sensor for Monitoring Integrated Wastewater](#)

Rusdianasari, Jaksen, Ahmad Taqwa and Yudi Wijarnako

[Open abstract](#), [Smart Sensor for Monitoring Integrated Wastewater](#) [View article](#), [Smart Sensor for Monitoring Integrated Wastewater](#) [PDF](#), [Smart Sensor for Monitoring Integrated Wastewater](#)

012062

THE FOLLOWING ARTICLE IS OPEN ACCESS

[Application Alkali Treatment Rice Husk – CaCl₂ as Moisture Absorber of Coconut Palm Sugar Granule](#)

DP Agriawati, E Warsiki, A Iskandar and E Noor

[Open abstract](#), [Application Alkali Treatment Rice Husk – CaCl₂ as Moisture Absorber of Coconut Palm Sugar Granule](#) [View article](#), [Application Alkali Treatment Rice Husk – CaCl₂ as Moisture Absorber of Coconut Palm Sugar Granule](#) [PDF](#), [Application Alkali Treatment Rice Husk – CaCl₂ as Moisture Absorber of Coconut Palm Sugar Granule](#)

012063

THE FOLLOWING ARTICLE IS OPEN ACCESS

[Application Nano Zeolite-Molybdate For Avocado Ripeness Indicator](#)

VJ Putri, E Warsiki, K Syamsu and A Iskandar

[Open abstract](#), [Application Nano Zeolite-Molybdate For Avocado Ripeness Indicator](#) [View article](#), [Application Nano Zeolite-Molybdate For Avocado Ripeness Indicator](#) [PDF](#), [Application Nano Zeolite-Molybdate For Avocado Ripeness Indicator](#)

012064

THE FOLLOWING ARTICLE IS OPEN ACCESS

[Characteristics of High Protein Snack Bar Made of Modified Sweet Potato Flour](#)

Marleen Sunyoto, Robi Andoyo and Euis Masitoh

[Open abstract](#), [Characteristics of High Protein Snack Bar Made of Modified Sweet Potato Flour](#) [View article](#), [Characteristics of High Protein Snack Bar Made of Modified Sweet Potato Flour](#) [PDF](#), [Characteristics of High Protein Snack Bar Made of Modified Sweet Potato Flour](#)

012065

THE FOLLOWING ARTICLE IS OPEN ACCESS

[Utilization of local West Sumatra bamboo for laminated bamboo board with different adhesives](#)

Sahadi Didi Ismanto and Neswati

[Open abstract](#), [Utilization of local West Sumatra bamboo for laminated bamboo board with different adhesives](#) [View article](#), [Utilization of local West Sumatra bamboo for laminated bamboo board with different adhesives](#) [PDF](#), [Utilization of local West Sumatra bamboo for laminated bamboo board with different adhesives](#)

012066

THE FOLLOWING ARTICLE IS OPEN ACCESS

[Gambir Quality from West Sumatra Indonesia Processed With Traditional Extraction](#)

Tuty Anggraini, Neswati and Alfi Asben

[Open abstract](#), [Gambir Quality from West Sumatra Indonesia Processed With Traditional Extraction](#) [View article](#), [Gambir Quality from West Sumatra Indonesia Processed With Traditional Extraction](#) [PDF](#), [Gambir Quality from West Sumatra Indonesia Processed With Traditional Extraction](#)

012067

THE FOLLOWING ARTICLE IS OPEN ACCESS

[The Effect of Vegetable Waste Flour as Substitution of Feed on Production Performance and Income Over Feed Cost of Male Quail \(*Coturnix coturnix japonica*\)](#)

Joko Sutrisno, Winny Swastike, Akmal Prayudi and Ahmad Pramono

[Open abstract](#), [The Effect of Vegetable Waste Flour as Substitution of Feed on Production Performance and Income Over Feed Cost of Male Quail \(*Coturnix coturnix japonica*\)](#) [View article](#), [The Effect of Vegetable Waste Flour as Substitution of Feed on Production Performance and Income Over Feed Cost of Male Quail \(*Coturnix coturnix japonica*\)](#) [PDF](#), [The Effect of Vegetable Waste Flour as Substitution of Feed on Production Performance and Income Over Feed Cost of Male Quail \(*Coturnix coturnix japonica*\)](#)

012068

THE FOLLOWING ARTICLE IS OPEN ACCESS

[Isolation and identification of indigenous lactic acid bacteria on corn flour BISI-16 during spontaneous fermentation process](#)

Andi Sukainah, Eva Johannes, Ratnawaty Fadilah, Amirah Mustarin and ReskiPraja Putra

[Open abstract](#), [Isolation and identification of indigenous lactic acid bacteria on corn flour BISI-16 during spontaneous fermentation process](#) [View article](#), [Isolation and identification of indigenous lactic acid bacteria on corn flour BISI-16 during spontaneous fermentation process](#) [PDF](#), [Isolation and identification of indigenous lactic acid bacteria on corn flour BISI-16 during spontaneous fermentation process](#)

012069

THE FOLLOWING ARTICLE IS OPEN ACCESS

[The Influence of Lactic Acid Bacteria *Lactobasillus Casei* For performance of Broiler](#)

R Mega Sari and Syahro Ali Akbar

[Open abstract](#), [The Influence of Lactic Acid Bacteria *Lactobasillus Casei* For performance of Broiler](#) [View article](#), [The Influence of Lactic Acid Bacteria *Lactobasillus Casei* For performance of Broiler](#) [PDF](#), [The Influence of Lactic Acid Bacteria *Lactobasillus Casei* For performance of Broiler](#)

012070

THE FOLLOWING ARTICLE IS OPEN ACCESS

[The Stability of Extract *Indigofera tinctoria* for Color Indicator](#)

PG Putri, E Warsiki and Sugiarto

[Open abstract](#), [The Stability of Extract *Indigofera tinctoria* for Color Indicator](#) [View article](#), [The Stability of Extract *Indigofera tinctoria* for Color Indicator](#) [PDF](#), [The Stability of Extract *Indigofera tinctoria* for Color Indicator](#)

012071

THE FOLLOWING ARTICLE IS OPEN ACCESS

[Metabolite profiling of Indonesian cacao using Gas Chromatography-Mass Spectrometry](#)

Lukita Devy, Agung Wahyu Susilo, Ade Wachjar and Sobir

[Open abstract](#), [Metabolite profiling of Indonesian cacao using Gas Chromatography-Mass Spectrometry](#) [View article](#), [Metabolite profiling of Indonesian cacao using Gas Chromatography-Mass Spectrometry](#) [PDF](#), [Metabolite profiling of Indonesian cacao using Gas Chromatography-Mass Spectrometry](#)

012072

THE FOLLOWING ARTICLE IS OPEN ACCESS

[The effect of chitosan and bran fermentation on the weight of abdominal fat, blood cholesterol and local duck eggs](#)

Eli Sahara, Sofia Sandi and Fitra Yossi

[Open abstract](#), The effect of chitosan and bran fermentation on the weight of abdominal fat, blood cholesterol and local duck eggs [View article](#), The effect of chitosan and bran fermentation on the weight of abdominal fat, blood cholesterol and local duck eggs [PDF](#), The effect of chitosan and bran fermentation on the weight of abdominal fat, blood cholesterol and local duck eggs

012073

THE FOLLOWING ARTICLE IS OPEN ACCESS

[The potential of instant yellow cornmeal and tempe flour as glucose control on hyperglycemic conditions](#)

Susi Desminarti, Ermiami and Rahzarni

[Open abstract](#), The potential of instant yellow cornmeal and tempe flour as glucose control on hyperglycemic conditions [View article](#), The potential of instant yellow cornmeal and tempe flour as glucose control on hyperglycemic conditions [PDF](#), The potential of instant yellow cornmeal and tempe flour as glucose control on hyperglycemic conditions

012074

THE FOLLOWING ARTICLE IS OPEN ACCESS

[Side effect of long term injection of high dose whitening vitamin C to plasma glucose and cholesterol level](#)

NW Sudatri, Dwi Ariani Yulihastiti, Ni Made Suartini, Inna Narayani and Ni Nyoman Wirasiti

[Open abstract](#), Side effect of long term injection of high dose whitening vitamin C to plasma glucose and cholesterol level [View article](#), Side effect of long term injection of high dose whitening vitamin C to plasma glucose and cholesterol level [PDF](#), Side effect of long term injection of high dose whitening vitamin C to plasma glucose and cholesterol level

012075

THE FOLLOWING ARTICLE IS OPEN ACCESS

[Phytochemical content, extract standardization and antioxidant activity of *Calliandra calothyrsus* Meissn leaf, a potential phytoestrogen source](#)

I Setyawati, Npad Wijayanti and NI Wiratmini

[Open abstract](#), Phytochemical content, extract standardization and antioxidant activity of *Calliandra calothyrsus* Meissn leaf, a potential phytoestrogen source [View article](#), Phytochemical content, extract standardization and antioxidant activity of *Calliandra calothyrsus* Meissn leaf, a potential phytoestrogen source [PDF](#), Phytochemical content, extract standardization and antioxidant activity of *Calliandra calothyrsus* Meissn leaf, a potential phytoestrogen source

012076

THE FOLLOWING ARTICLE IS OPEN ACCESS

[Potential Tempe Product of Universitas Sumatra Utara in Supporting Food Security in North of Sumatera, Indonesia](#)

Ameilia Zuliyanti Siregar, Tulus and Liana Dwi Sri Hastuti

[Open abstract](#), Potential Tempe Product of Universitas Sumatra Utara in Supporting Food Security in North of Sumatera, Indonesia [View article](#), Potential Tempe Product of Universitas Sumatra Utara in Supporting Food Security in North of Sumatera, Indonesia [PDF](#), Potential Tempe Product of Universitas Sumatra Utara in Supporting Food Security in North of Sumatera, Indonesia

012077

THE FOLLOWING ARTICLE IS OPEN ACCESS

[Synergistic effectivity of *Mansoa alliacea* and *Allamanda cathartica* leaf extracts controlling stem rot disease in peanut plant \(*Arachis hypogaea*\) at the greenhouse](#)

N M S Parwanayoni, D N Suprpta and K Khalimi

[Open abstract](#), Synergistic effectivity of *Mansoa alliacea* and *Allamanda cathartica* leaf extracts controlling stem rot disease in peanut plant (*Arachis hypogaea*) at the greenhouse [View article](#), Synergistic effectivity of *Mansoa alliacea* and *Allamanda cathartica* leaf extracts controlling stem rot disease in peanut plant (*Arachis hypogaea*) at the greenhouse [PDF](#), Synergistic effectivity of *Mansoa alliacea* and *Allamanda cathartica* leaf extracts controlling stem rot disease in peanut plant (*Arachis hypogaea*) at the greenhouse

012078

THE FOLLOWING ARTICLE IS OPEN ACCESS

[Agronomic effectiveness of biochar and fertilizer type in increasing the results of sweet corn](#)

Yohanes Parlindungan Situmeang, Ida Bagus Komang Mahardika and Anak Agung Sagung Putri Risa Andriani

[Open abstract](#), Agronomic effectiveness of biochar and fertilizer type in increasing the results of sweet corn [View article](#), Agronomic effectiveness of biochar and fertilizer type in increasing the results of sweet corn [PDF](#), Agronomic effectiveness of biochar and fertilizer type in increasing the results of sweet corn

012079

THE FOLLOWING ARTICLE IS OPEN ACCESS

[Development of Partial Least Square \(PLS\) Prediction Model to Measure the Ripeness of Oil Palm Fresh Fruit Bunch \(FFB\) by Using NIR Spectroscopy](#)

Zaqlul Iqbal, Sam Herodian and Slamet Widodo

[Open abstract](#), Development of Partial Least Square (PLS) Prediction Model to Measure the Ripeness of Oil Palm Fresh Fruit Bunch (FFB) by Using NIR Spectroscopy [View article](#), Development of Partial Least Square (PLS) Prediction Model to Measure the Ripeness of Oil Palm Fresh Fruit Bunch (FFB) by Using NIR Spectroscopy [PDF](#), Development of Partial Least Square (PLS) Prediction Model to Measure the Ripeness of Oil Palm Fresh Fruit Bunch (FFB) by Using NIR Spectroscopy

012080

THE FOLLOWING ARTICLE IS OPEN ACCESS

[Consumer Acceptance of Spicy Fried Dry Potato and Shrimp Sambal for Condiments Instant Uduk Rice](#)

Dwi Kristiastuti Suwardiah and Febriani Lukitasari

[Open abstract](#), Consumer Acceptance of Spicy Fried Dry Potato and Shrimp Sambal for Condiments Instant Uduk Rice [View article](#), Consumer Acceptance of Spicy Fried Dry Potato and Shrimp Sambal for Condiments Instant Uduk Rice [PDF](#), Consumer Acceptance of Spicy Fried Dry Potato and Shrimp Sambal for Condiments Instant Uduk Rice

012081

THE FOLLOWING ARTICLE IS OPEN ACCESS

[Analysis of consumer acceptance on instant uduk rice reviewed from variant taste](#)

Niken Purwidiani, Dwi Kristiastuti Suwardiah and Yuyun Irawati

[Open abstract](#), Analysis of consumer acceptance on instant uduk rice reviewed from variant taste [View article](#), Analysis of consumer acceptance on instant uduk rice reviewed from variant taste [PDF](#), Analysis of consumer acceptance on instant uduk rice reviewed from variant taste

012082

THE FOLLOWING ARTICLE IS OPEN ACCESS

[Optimization of Ganyong Starch \(*Canna edulis*\) on Making of Dry and Instant Noodles](#)

Sri Handajani and Lucia Tri Pangesthi

[Open abstract](#), [Optimization of Ganyong Starch \(*Canna edulis*\) on Making of Dry and Instant Noodles](#) [View article](#), [Optimization of Ganyong Starch \(*Canna edulis*\) on Making of Dry and Instant Noodles](#) [PDF](#), [Optimization of Ganyong Starch \(*Canna edulis*\) on Making of Dry and Instant Noodles](#)

012083

THE FOLLOWING ARTICLE IS OPEN ACCESS

[Impact of Curing and Extraction Time on Yield and Quality of Base Gelatin from Goat Skin](#)

Nita Kusumawati, Asrul Bahar, Monica Sianita Maria and Supari Muslim

[Open abstract](#), [Impact of Curing and Extraction Time on Yield and Quality of Base Gelatin from Goat Skin](#) [View article](#), [Impact of Curing and Extraction Time on Yield and Quality of Base Gelatin from Goat Skin](#) [PDF](#), [Impact of Curing and Extraction Time on Yield and Quality of Base Gelatin from Goat Skin](#)

012084

THE FOLLOWING ARTICLE IS OPEN ACCESS

[Effect of Hurdle Technology in Angkak Sausage Preservation](#)

Lucia Tri Pangesthi and Lilis Sulandari

[Open abstract](#), [Effect of Hurdle Technology in Angkak Sausage Preservation](#) [View article](#), [Effect of Hurdle Technology in Angkak Sausage Preservation](#) [PDF](#), [Effect of Hurdle Technology in Angkak Sausage Preservation](#)

012085

THE FOLLOWING ARTICLE IS OPEN ACCESS

[Antioxidative and Sensory Properties of Tea Made from Jambolan \(*Syzygium cumini*\) Fruit Peel](#)

Puspita Sari, Nawal El Abdah Fitriyah, Nita Kuswardhani, Widya Palupi Niken and Maryanto

[Open abstract](#), [Antioxidative and Sensory Properties of Tea Made from Jambolan \(*Syzygium cumini*\) Fruit Peel](#) [View article](#), [Antioxidative and Sensory Properties of Tea Made from Jambolan \(*Syzygium cumini*\) Fruit Peel](#) [PDF](#), [Antioxidative and Sensory Properties of Tea Made from Jambolan \(*Syzygium cumini*\) Fruit Peel](#)

Putting Sustainability of Agriculture, Food, and Energy into Practice

012086

THE FOLLOWING ARTICLE IS OPEN ACCESS

[Weeds found associated with wheat crop at Alahan Panjang, West Sumatra](#)

I Chaniago, I Suliansyah and N Hasanah

[Open abstract](#), [Weeds found associated with wheat crop at Alahan Panjang, West Sumatra](#) [View article](#), [Weeds found associated with wheat crop at Alahan Panjang, West Sumatra](#) [PDF](#), [Weeds found associated with wheat crop at Alahan Panjang, West Sumatra](#)

012087

THE FOLLOWING ARTICLE IS OPEN ACCESS

[Application of isolates of indigenous rhizobacteria: effect on the growth and yield of potato var. Cingkariang](#)

R Suwinda, Warnita and I Chaniago

[Open abstract](#), [Application of isolates of indigenous rhizobacteria: effect on the growth and yield of potato var. Cingkariang](#) [View article](#), [Application of isolates of indigenous rhizobacteria: effect on the growth and yield of potato var. Cingkariang](#) [PDF](#), [Application of isolates of indigenous rhizobacteria: effect on the growth and yield of potato var. Cingkariang](#)

012088

THE FOLLOWING ARTICLE IS OPEN ACCESS

[Response of rice genotypes to zinc fertilizer detected using RAPD](#)

M R Defiani, I A Astarini and M Pharmawati

[Open abstract](#), [Response of rice genotypes to zinc fertilizer detected using RAPD](#) [View article](#), [Response of rice genotypes to zinc fertilizer detected using RAPD](#) [PDF](#), [Response of rice genotypes to zinc fertilizer detected using RAPD](#)

012089

THE FOLLOWING ARTICLE IS OPEN ACCESS

[Grain Yield, Stability and Adaptability of 11 Prospective Genotypes Across 16 Multilocation Trials](#)

Budi Setyawan, Irfan Suliansyah, Aswaldi Anwar and Etti Swasti

[Open abstract](#), [Grain Yield, Stability and Adaptability of 11 Prospective Genotypes Across 16 Multilocation Trials](#) [View article](#), [Grain Yield, Stability and Adaptability of 11 Prospective Genotypes Across 16 Multilocation Trials](#) [PDF](#), [Grain Yield, Stability and Adaptability of 11 Prospective Genotypes Across 16 Multilocation Trials](#)

012090

THE FOLLOWING ARTICLE IS OPEN ACCESS

[Changes in soil bacterial community as affected by soil compaction, soil water content and plant roots](#)

L Ishak and P H Brown

[Open abstract](#), [Changes in soil bacterial community as affected by soil compaction, soil water content and plant roots](#) [View article](#), [Changes in soil bacterial community as affected by soil compaction, soil water content and plant roots](#) [PDF](#), [Changes in soil bacterial community as affected by soil compaction, soil water content and plant roots](#)

012091

THE FOLLOWING ARTICLE IS OPEN ACCESS

[Effect of Supplementation of *Indigofera zollingeriana* Top Leaf Meal in the Diets to the Slaughter Weight and Carcass of Pegagan Ducks](#)

Rizki Palupi, Fitri Novaliya Lubis and Ego Syailendra

[Open abstract](#), [Effect of Supplementation of *Indigofera zollingeriana* Top Leaf Meal in the Diets to the Slaughter Weight and Carcass of Pegagan Ducks](#) [View article](#), [Effect of Supplementation of *Indigofera zollingeriana* Top Leaf Meal in the Diets to the Slaughter Weight and Carcass of Pegagan Ducks](#) [PDF](#), [Effect of Supplementation of *Indigofera zollingeriana* Top Leaf Meal in the Diets to the Slaughter Weight and Carcass of Pegagan Ducks](#)

012092

THE FOLLOWING ARTICLE IS OPEN ACCESS

[Flowering induction and formation of salak \(*Salacca sumaterana* Becc\) fruit with potassium and boron fertilization](#)

Warnita, Irfan Suliansyah, Auzar Syarif and Rasmita Adelina

[Open abstract](#), Flowering induction and formation of salak (*Salacca sumaterana* Becc) fruit with potassium and boron fertilization [View article](#), Flowering induction and formation of salak (*Salacca sumaterana* Becc) fruit with potassium and boron fertilization [PDF](#), Flowering induction and formation of salak (*Salacca sumaterana* Becc) fruit with potassium and boron fertilization

012093

THE FOLLOWING ARTICLE IS OPEN ACCESS

[Floral structures affect on pollination events of sandalwood in four landraces along landscape gradients in Gunung Sewu, Java, Indonesia](#)

YWN Ratnaningrum, S Indrioko, R Setiahadhi and B Lilianawati

[Open abstract](#), Floral structures affect on pollination events of sandalwood in four landraces along landscape gradients in Gunung Sewu, Java, Indonesia [View article](#), Floral structures affect on pollination events of sandalwood in four landraces along landscape gradients in Gunung Sewu, Java, Indonesia [PDF](#), Floral structures affect on pollination events of sandalwood in four landraces along landscape gradients in Gunung Sewu, Java, Indonesia

012094

THE FOLLOWING ARTICLE IS OPEN ACCESS

[Integrated farming system development based on local potential to improve food security and increase the farmers income: case study in Jatisari Village, Jatisrono Sub-district, Wonogiri Regency](#)

S J Rachmawatie, L Widiastuti, J Sutrisno and E S Rahayu

[Open abstract](#), Integrated farming system development based on local potential to improve food security and increase the farmers income: case study in Jatisari Village, Jatisrono Sub-district, Wonogiri Regency [View article](#), Integrated farming system development based on local potential to improve food security and increase the farmers income: case study in Jatisari Village, Jatisrono Sub-district, Wonogiri Regency [PDF](#), Integrated farming system development based on local potential to improve food security and increase the farmers income: case study in Jatisari Village, Jatisrono Sub-district, Wonogiri Regency

012095

THE FOLLOWING ARTICLE IS OPEN ACCESS

[Role of compost derived from rice straw and tithonia in improving chemical fertility of Regosol on onion cultivation](#)

Gusnidar Gusnidar, Febria Fitria, Lusi Maira and Yulnafatmawita Yulnafatmawita

[Open abstract](#), Role of compost derived from rice straw and tithonia in improving chemical fertility of Regosol on onion cultivation [View article](#), Role of compost derived from rice straw and tithonia in improving chemical fertility of Regosol on onion cultivation [PDF](#), Role of compost derived from rice straw and tithonia in improving chemical fertility of Regosol on onion cultivation

012096

THE FOLLOWING ARTICLE IS OPEN ACCESS

[Hygiene and Sanitation of Pindang Processing in Central of Pemindangan, Bali](#)

P. A. N.K. Permatananda, I. G.S Pandit and I K. Irianto

[Open abstract](#), [Hygiene and Sanitation of Pindang Processing in Central of Pemindangan, Bali](#) [View article](#), [Hygiene and Sanitation of Pindang Processing in Central of Pemindangan, Bali](#) [PDF](#), [Hygiene and Sanitation of Pindang Processing in Central of Pemindangan, Bali](#)

012097

THE FOLLOWING ARTICLE IS OPEN ACCESS

[Development of organic rice potentials as drivers of rural economy towards sustainable national agricultural development](#)

Bambang Pujiasmanto, Retno Tanding Suryandari and Istijabatul Aliyah

[Open abstract](#), [Development of organic rice potentials as drivers of rural economy towards sustainable national agricultural development](#) [View article](#), [Development of organic rice potentials as drivers of rural economy towards sustainable national agricultural development](#) [PDF](#), [Development of organic rice potentials as drivers of rural economy towards sustainable national agricultural development](#)

012098

THE FOLLOWING ARTICLE IS OPEN ACCESS

[Perceived Environment-Economic Benefits and Factors Influencing the Adoption of Indonesian Sustainable Palm Oil Production System by Smallholder Farmers](#)

Teguh Adiprasetyo, Irnad Irnad and Nusril Nusril

[Open abstract](#), [Perceived Environment-Economic Benefits and Factors Influencing the Adoption of Indonesian Sustainable Palm Oil Production System by Smallholder Farmers](#) [View article](#), [Perceived Environment-Economic Benefits and Factors Influencing the Adoption of Indonesian Sustainable Palm Oil Production System by Smallholder Farmers](#) [PDF](#), [Perceived Environment-Economic Benefits and Factors Influencing the Adoption of Indonesian Sustainable Palm Oil Production System by Smallholder Farmers](#)

012099

THE FOLLOWING ARTICLE IS OPEN ACCESS

[Providing Ultraviolet Recovery on Salmonella sp Bacteria and Haematological Examination in Infected Salmonellosis](#)

D A Yulihastuti and R Kawuri

[Open abstract](#), [Providing Ultraviolet Recovery on Salmonella sp Bacteria and Haematological Examination in Infected Salmonellosis](#) [View article](#), [Providing Ultraviolet Recovery on Salmonella sp Bacteria and Haematological Examination in Infected Salmonellosis](#) [PDF](#), [Providing Ultraviolet Recovery on Salmonella sp Bacteria and Haematological Examination in Infected Salmonellosis](#)

012100

THE FOLLOWING ARTICLE IS OPEN ACCESS

[The activity of Potassium and Phosphate Solubilizing bacteria from sugarcane rhizosphere on Some Bagasse Condition media inoculated by Lignocellulolytic bacteria](#)

Tri Candra Setiawati, Marga Mandala and Avief

[Open abstract](#), [The activity of Potassium and Phosphate Solubilizing bacteria from sugarcane rhizosphere on Some Bagasse Condition media inoculated by Lignocellulolytic bacteria](#) [View article](#), [The activity of Potassium and Phosphate Solubilizing bacteria from sugarcane rhizosphere on Some Bagasse Condition media inoculated by Lignocellulolytic bacteria](#) [PDF](#), [The activity of Potassium and Phosphate Solubilizing bacteria from sugarcane rhizosphere on Some Bagasse Condition media inoculated by Lignocellulolytic bacteria](#)

012101

THE FOLLOWING ARTICLE IS OPEN ACCESS

[White skin orange sweet potato grown in Limapuluh Kota District, West Sumatra Indonesia: Morphology and elemental analysis by energy-dispersive X-ray fluorescence](#)

Wiwik Hardaningsih, Ngakumalem Sembiring, Siti Khatijah M. Saad, Lailatun Nazirah Ozair and Bohari M Yamin

[Open abstract](#), [White skin orange sweet potato grown in Limapuluh Kota District, West Sumatra Indonesia: Morphology and elemental analysis by energy-dispersive X-ray fluorescence](#) [View article](#), [White skin orange sweet potato grown in Limapuluh Kota District, West Sumatra Indonesia: Morphology and elemental analysis by energy-dispersive X-ray fluorescence](#) [PDF](#), [White skin orange sweet potato grown in Limapuluh Kota District, West Sumatra Indonesia: Morphology and elemental analysis by energy-dispersive X-ray fluorescence](#)

012102

THE FOLLOWING ARTICLE IS OPEN ACCESS

[Dynamics of Peasants' Household Rice Consumption in Central Java](#)

E. Rusdiyana, Agustono, E. Antriyandarti and S.W. Ani

[Open abstract](#), [Dynamics of Peasants' Household Rice Consumption in Central Java](#) [View article](#), [Dynamics of Peasants' Household Rice Consumption in Central Java](#) [PDF](#), [Dynamics of Peasants' Household Rice Consumption in Central Java](#)

012103

THE FOLLOWING ARTICLE IS OPEN ACCESS

[Evaluation of Pest Control Based on Morphological Character Variation on 20 Varieties and Genetic Variation Based on RAPD of Sugarcane \(*Saccharum officinarum* L.\) in Indonesia](#)

Riza Ganies Aristya, Cindy Gresyllia Permadani, Christy Ariesta, Bening Larasati, Rina Sri Kasiamdari, Heri Prabowo, Arni Musthofa and Muhammad Fauzi Arif

[Open abstract](#), [Evaluation of Pest Control Based on Morphological Character Variation on 20 Varieties and Genetic Variation Based on RAPD of Sugarcane \(*Saccharum officinarum* L.\) in Indonesia](#) [View article](#), [Evaluation of Pest Control Based on Morphological Character Variation on 20 Varieties and Genetic Variation Based on RAPD of Sugarcane \(*Saccharum officinarum* L.\) in Indonesia](#) [PDF](#), [Evaluation of Pest Control Based on Morphological Character Variation on 20 Varieties and Genetic Variation Based on RAPD of Sugarcane \(*Saccharum officinarum* L.\) in Indonesia](#)

012104

THE FOLLOWING ARTICLE IS OPEN ACCESS

[The Influence of Forest Ecosystems to Ant Community on Smallholder Oil Palm Plantations at Dharmasraya Regency, West Sumatera Indonesia](#)

Yaherwandi, Henny Herwina, Munzir Busniah, Siska Effendi and dan Arlen Hasan

[Open abstract](#), [The Influence of Forest Ecosystems to Ant Community on Smallholder Oil Palm Plantations at Dharmasraya Regency, West Sumatera Indonesia](#) [View article](#), [The Influence of Forest Ecosystems to Ant Community on Smallholder Oil Palm Plantations at Dharmasraya Regency, West Sumatera Indonesia](#) [PDF](#), [The Influence of Forest Ecosystems to Ant Community on Smallholder Oil Palm Plantations at Dharmasraya Regency, West Sumatera Indonesia](#)

012105

THE FOLLOWING ARTICLE IS OPEN ACCESS

[Swot analysis of development of beef cattle – palm oil integration in Indonesia](#)

Firman RL Silalahi, Abdul Rauf, Chairani Hanum and Donald Siahaan

[Open abstract](#), [Swot analysis of development of beef cattle – palm oil integration in Indonesia](#) [View article](#), [Swot analysis of development of beef cattle – palm oil integration in Indonesia](#) [PDF](#), [Swot analysis of development of beef cattle – palm oil integration in Indonesia](#)

012106

THE FOLLOWING ARTICLE IS OPEN ACCESS

[Klassen Typology Approach for Analysis of the Role of Competitiveness Agricultural Sector](#)

Swb Katti, D Pratiwi and R Setiahad

[Open abstract](#), [Klassen Typology Approach for Analysis of the Role of Competitiveness Agricultural Sector](#) [View article](#), [Klassen Typology Approach for Analysis of the Role of Competitiveness Agricultural Sector](#) [PDF](#), [Klassen Typology Approach for Analysis of the Role of Competitiveness Agricultural Sector](#)

012107

THE FOLLOWING ARTICLE IS OPEN ACCESS

[Implementation of Fine Sand's Capillary Force to Filter Polluted Water: A Study on Change of Overflow Media Height to the Debit and Quality of Filtered Tofu Liquid Waste](#)

Sigit Mujiharjo, Syafnil, Yessy Wulandari and NovitaWinda Sari

[Open abstract](#), [Implementation of Fine Sand's Capillary Force to Filter Polluted Water: A Study on Change of Overflow Media Height to the Debit and Quality of Filtered Tofu Liquid Waste](#) [View article](#), [Implementation of Fine Sand's Capillary Force to Filter Polluted Water: A Study on Change of Overflow Media Height to the Debit and Quality of Filtered Tofu Liquid Waste](#) [PDF](#), [Implementation of Fine Sand's Capillary Force to Filter Polluted Water: A Study on Change of Overflow Media Height to the Debit and Quality of Filtered Tofu Liquid Waste](#)

012108

THE FOLLOWING ARTICLE IS OPEN ACCESS

[The Study of Waste Generation and Composition in Lubuk Alung Market in Padang Pariaman Regency](#)

Candrianto, Radna Ningsih and Seprimon

[Open abstract](#), [The Study of Waste Generation and Composition in Lubuk Alung Market in Padang Pariaman Regency](#) [View article](#), [The Study of Waste Generation and Composition in Lubuk Alung Market in Padang Pariaman Regency](#) [PDF](#), [The Study of Waste Generation and Composition in Lubuk Alung Market in Padang Pariaman Regency](#)

012109

THE FOLLOWING ARTICLE IS OPEN ACCESS

[Which is which, Biomass or Solar for Food and Energy?](#)

Nobutaka Ito

[Open abstract](#), [Which is which, Biomass or Solar for Food and Energy?](#) [View article](#), [Which is which, Biomass or Solar for Food and Energy?](#) [PDF](#), [Which is which, Biomass or Solar for Food and Energy?](#)

012110

THE FOLLOWING ARTICLE IS OPEN ACCESS

[Sustainable practices: implementing bamboo cina conservation-based management in Ternate – North Maluku-Indonesia](#)

Mardiyani Sidayat

[Open abstract](#), Sustainable practices: implementing bamboo cina conservation-based management in Ternate – North Maluku-Indonesia [View article](#), Sustainable practices: implementing bamboo cina conservation-based management in Ternate –North Maluku-Indonesia [PDF](#), Sustainable practices: implementing bamboo cina conservation-based management in Ternate –North Maluku-Indonesia

012111

THE FOLLOWING ARTICLE IS OPEN ACCESS

[The Establishment of Environmental-Based Organization to Empower People Economy in Women Community in West Jakarta](#)

Helsinawati and Harun Faizal

[Open abstract](#), The Establishment of Environmental-Based Organization to Empower People Economy in Women Community in West Jakarta [View article](#), The Establishment of Environmental-Based Organization to Empower People Economy in Women Community in West Jakarta [PDF](#), The Establishment of Environmental-Based Organization to Empower People Economy in Women Community in West Jakarta

012112

THE FOLLOWING ARTICLE IS OPEN ACCESS

[Prediction of Surface Runoff and Erosion by Hydrological SWAT Model in Sumpur Watershed, West Sumatra](#)

Edwin, Amrizal Saidi, Aprisal, Yulnafatmawita and Iwan Ridwansyah

[Open abstract](#), Prediction of Surface Runoff and Erosion by Hydrological SWAT Model in Sumpur Watershed, West Sumatra [View article](#), Prediction of Surface Runoff and Erosion by Hydrological SWAT Model in Sumpur Watershed, West Sumatra [PDF](#), Prediction of Surface Runoff and Erosion by Hydrological SWAT Model in Sumpur Watershed, West Sumatra

Community Development and Empowerment

012113

THE FOLLOWING ARTICLE IS OPEN ACCESS

[Sustainability of Maize Farming in Grobogan, Central Java. Indonesia](#)

Umi Barokah, Rhina Uchyani Fajarningsih and Wiwit Rahayu

[Open abstract](#), Sustainability of Maize Farming in Grobogan, Central Java. Indonesia [View article](#), Sustainability of Maize Farming in Grobogan, Central Java. Indonesia [PDF](#), Sustainability of Maize Farming in Grobogan, Central Java. Indonesia

012114

THE FOLLOWING ARTICLE IS OPEN ACCESS

[Adoption Determinants of Biofertilizer Technology for Soybean in Rainfed Area](#)

Dian Adi Anggraeni Elisabeth, Siti Mutmaidah and Arief Harsono

[Open abstract](#), Adoption Determinants of Biofertilizer Technology for Soybean in Rainfed Area [View article](#), Adoption Determinants of Biofertilizer Technology for Soybean in Rainfed Area [PDF](#), Adoption Determinants of Biofertilizer Technology for Soybean in Rainfed Area

012115

THE FOLLOWING ARTICLE IS OPEN ACCESS

[Assessing the impact of climate change on the traditional hydrological system of the Cordillera Rice Terraces](#)

Aldrin Aujero, Scott Platt-Salcedo and Adam Zhou

[Open abstract](#), [Assessing the impact of climate change on the traditional hydrological system of the Cordillera Rice Terraces](#) [View article](#), [Assessing the impact of climate change on the traditional hydrological system of the Cordillera Rice Terraces](#) [PDF](#), [Assessing the impact of climate change on the traditional hydrological system of the Cordillera Rice Terraces](#)

012116

THE FOLLOWING ARTICLE IS OPEN ACCESS

[Agribusiness Strategy of Cocoa Farmer's in Jember Regency, East Java, Indonesia](#)

Pawana Nur indah, Eko Nurhadi and Syarif Imam Hidayat

[Open abstract](#), [Agribusiness Strategy of Cocoa Farmer's in Jember Regency, East Java, Indonesia](#) [View article](#), [Agribusiness Strategy of Cocoa Farmer's in Jember Regency, East Java, Indonesia](#) [PDF](#), [Agribusiness Strategy of Cocoa Farmer's in Jember Regency, East Java, Indonesia](#)

012117

THE FOLLOWING ARTICLE IS OPEN ACCESS

[Farm Power Sources and Machinery Contribution in Small Rice Farming Operations in Kampar Region, Indonesia](#)

Ujang Paman, Khairizal, Hajry Arief Wahyudy and Saipul Bahri

[Open abstract](#), [Farm Power Sources and Machinery Contribution in Small Rice Farming Operations in Kampar Region, Indonesia](#) [View article](#), [Farm Power Sources and Machinery Contribution in Small Rice Farming Operations in Kampar Region, Indonesia](#) [PDF](#), [Farm Power Sources and Machinery Contribution in Small Rice Farming Operations in Kampar Region, Indonesia](#)

012118

THE FOLLOWING ARTICLE IS OPEN ACCESS

[Development of Buffalo Caring System from Various Maintenance Pattern](#)

Resolinda Harly

[Open abstract](#), [Development of Buffalo Caring System from Various Maintenance Pattern](#) [View article](#), [Development of Buffalo Caring System from Various Maintenance Pattern](#) [PDF](#), [Development of Buffalo Caring System from Various Maintenance Pattern](#)

012119

THE FOLLOWING ARTICLE IS OPEN ACCESS

[Analysis of Household Demand for Chicken Meat in Yogyakarta](#)

Susi Wuri Ani and Ernoiz Antriyandarti

[Open abstract](#), [Analysis of Household Demand for Chicken Meat in Yogyakarta](#) [View article](#), [Analysis of Household Demand for Chicken Meat in Yogyakarta](#) [PDF](#), [Analysis of Household Demand for Chicken Meat in Yogyakarta](#)

012120

THE FOLLOWING ARTICLE IS OPEN ACCESS

[Diagnostic and Design Approach: Preparation Masterplan Policies of Agroforestry Development in Madiun, Java, Indonesia](#)

R Setiahadi, M Lukitasari, D Pratiwi and SR Kartikasari

[Open abstract](#), Diagnostic and Design Approach: Preparation Masterplan Policies of Agroforestry Development in Madiun, Java, Indonesia [View article](#), Diagnostic and Design Approach: Preparation Masterplan Policies of Agroforestry Development in Madiun, Java, Indonesia [PDF](#), Diagnostic and Design Approach: Preparation Masterplan Policies of Agroforestry Development in Madiun, Java, Indonesia

012121

THE FOLLOWING ARTICLE IS OPEN ACCESS

[How Important CSR to Mining Companies: Empirical Case in Indonesia](#)

SRK Sari and R Setiahadi

[Open abstract](#), How Important CSR to Mining Companies: Empirical Case in Indonesia [View article](#), How Important CSR to Mining Companies: Empirical Case in Indonesia [PDF](#), How Important CSR to Mining Companies: Empirical Case in Indonesia

012122

THE FOLLOWING ARTICLE IS OPEN ACCESS

[Analysis of Farmer Behaviour to the Risk of Corn Farming System in Banyumas Regency](#)

Atalia Putri Septiani, Pujiati Utami and Rahmi Hayati Putri

[Open abstract](#), Analysis of Farmer Behaviour to the Risk of Corn Farming System in Banyumas Regency [View article](#), Analysis of Farmer Behaviour to the Risk of Corn Farming System in Banyumas Regency [PDF](#), Analysis of Farmer Behaviour to the Risk of Corn Farming System in Banyumas Regency

012123

THE FOLLOWING ARTICLE IS OPEN ACCESS

[Effect of Farmers Managed Extension Activities \(FMA\) on Changes in Farmers' Behavior in Panyakalan, Kubung Sub-district, Solok Regency](#)

D. Afrini and T. Astuti

[Open abstract](#), Effect of Farmers Managed Extension Activities (FMA) on Changes in Farmers' Behavior in Panyakalan, Kubung Sub-district, Solok Regency [View article](#), Effect of Farmers Managed Extension Activities (FMA) on Changes in Farmers' Behavior in Panyakalan, Kubung Sub-district, Solok Regency [PDF](#), Effect of Farmers Managed Extension Activities (FMA) on Changes in Farmers' Behavior in Panyakalan, Kubung Sub-district, Solok Regency

012124

THE FOLLOWING ARTICLE IS OPEN ACCESS

[Farmers Motivation to Raising Cow on Bali Cattle Breeding Business \(Case Study at Pelaga Village, Petang District, Badung Regency\)](#)

I Gusti Agus Maha Putra Sanjaya and Nyoman Suparta

[Open abstract](#), Farmers Motivation to Raising Cow on Bali Cattle Breeding Business (Case Study at Pelaga Village, Petang District, Badung Regency) [View article](#), Farmers Motivation to Raising Cow on Bali Cattle Breeding Business (Case Study at Pelaga Village, Petang District, Badung Regency) [PDF](#), Farmers Motivation to Raising Cow on Bali Cattle Breeding Business (Case Study at Pelaga Village, Petang District, Badung Regency)

012125

THE FOLLOWING ARTICLE IS OPEN ACCESS

[The Creation of Perception and Collaboration in Decreasing The Effects of Climate Change through Stem Education](#)

Suwattannarwong Phanphet, Sermkiat Jomjunyong, Athiwat Wangmai, Narong Sukprasert, Pattana Boonyaprapa and Ratanaree Suttipong

[Open abstract](#), The Creation of Perception and Collaboration in Decreasing The Effects of Climate Change through Stem Education [View article](#), The Creation of Perception and Collaboration in Decreasing The Effects

of Climate Change through Stem Education [PDF](#), The Creation of Perception and Collaboration in Decreasing The Effects of Climate Change through Stem Education

012126

THE FOLLOWING ARTICLE IS OPEN ACCESS

[Livestock Occupational Extension of Farmers for Problems Solving Burning in Agricultural Zone: The Case Study of Mae Na Chon Sub-District, Mae Chaem District, Chiang Mai Province](#)

Wallratat Intaruccomporn, Suraphol Sreshthaputra, Panuphan Prapatigul, Nathitakarn Pinthukas and Anupong Wongchai

[Open abstract](#), Livestock Occupational Extension of Farmers for Problems Solving Burning in Agricultural Zone: The Case Study of Mae Na Chon Sub-District, Mae Chaem District, Chiang Mai Province [View article](#), Livestock Occupational Extension of Farmers for Problems Solving Burning in Agricultural Zone: The Case Study of Mae Na Chon Sub-District, Mae Chaem District, Chiang Mai Province [PDF](#), Livestock Occupational Extension of Farmers for Problems Solving Burning in Agricultural Zone: The Case Study of Mae Na Chon Sub-District, Mae Chaem District, Chiang Mai Province

Energy Development

012127

THE FOLLOWING ARTICLE IS OPEN ACCESS

[Physicochemical Characteristics Analysis of Biomass and Calorie Values of Several Types of Bamboo in Typologies of Altitude in Different Growing Sites](#)

Aisman and Novizar Nazir

[Open abstract](#), Physicochemical Characteristics Analysis of Biomass and Calorie Values of Several Types of Bamboo in Typologies of Altitude in Different Growing Sites [View article](#), Physicochemical Characteristics Analysis of Biomass and Calorie Values of Several Types of Bamboo in Typologies of Altitude in Different Growing Sites [PDF](#), Physicochemical Characteristics Analysis of Biomass and Calorie Values of Several Types of Bamboo in Typologies of Altitude in Different Growing Sites

012128

THE FOLLOWING ARTICLE IS OPEN ACCESS

[Pyrolysis of Polypropylene Plastic Waste into Liquid Fuel](#)

Yohandri Bow, Rusdianasari and L Sutini Pujiastuti

[Open abstract](#), Pyrolysis of Polypropylene Plastic Waste into Liquid Fuel [View article](#), Pyrolysis of Polypropylene Plastic Waste into Liquid Fuel [PDF](#), Pyrolysis of Polypropylene Plastic Waste into Liquid Fuel

012129

THE FOLLOWING ARTICLE IS OPEN ACCESS

[Efficiency of 9KWp Sun Tracking Photovoltaic in Palembang, Indonesia](#)

Nova Pasaribu, Rusdianasari and Aida Syarif

[Open abstract](#), Efficiency of 9KWp Sun Tracking Photovoltaic in Palembang, Indonesia [View article](#), Efficiency of 9KWp Sun Tracking Photovoltaic in Palembang, Indonesia [PDF](#), Efficiency of 9KWp Sun Tracking Photovoltaic in Palembang, Indonesia

012130

THE FOLLOWING ARTICLE IS OPEN ACCESS

[The effectiveness of Solar Tracker Use on Solar Panels to The Output of The Generated Electricity Power](#)

Arnold Edward, Tresna Dewi and Rusdianasari

[Open abstract](#), The effectiveness of Solar Tracker Use on Solar Panels to The Output of The Generated Electricity Power [View article](#), The effectiveness of Solar Tracker Use on Solar Panels to The Output of The Generated Electricity Power [PDF](#), The effectiveness of Solar Tracker Use on Solar Panels to The Output of The Generated Electricity Power

012131

THE FOLLOWING ARTICLE IS OPEN ACCESS

[Performance Comparison of 3 Kwp Solar Panels Between Fixed and Sun Tracking in Palembang - Indonesia](#)

BRD Muhammad Hamdi, Tresna Dewi and Rusdianasari

[Open abstract](#), Performance Comparison of 3 Kwp Solar Panels Between Fixed and Sun Tracking in Palembang - Indonesia [View article](#), Performance Comparison of 3 Kwp Solar Panels Between Fixed and Sun Tracking in Palembang - Indonesia [PDF](#), Performance Comparison of 3 Kwp Solar Panels Between Fixed and Sun Tracking in Palembang - Indonesia

012132

THE FOLLOWING ARTICLE IS OPEN ACCESS

[Fermentation Process of Glycerol to Arabitol from Byproducts of *Reutalis trisperma* Biodiesel Using Yeast of *Debaryomyces Hansenii*](#)

Efri Mardawati, Robi Andoyo, Mimin Muhaemin, Sarifah Nurjanah, Darajat Natawigena, Totok Herwanto, Handarto, Gemilang Lara Utama, Rosalinda, Poppy *et al*

[Open abstract](#), Fermentation Process of Glycerol to Arabitol from Byproducts of *Reutalis trisperma* Biodiesel Using Yeast of *Debaryomyces Hansenii* [View article](#), Fermentation Process of Glycerol to Arabitol from Byproducts of *Reutalis trisperma* Biodiesel Using Yeast of *Debaryomyces Hansenii* [PDF](#), **Fermentation Process of Glycerol to Arabitol from Byproducts of *Reutalis trisperma* Biodiesel Using Yeast of *Debaryomyces Hansenii***

PAPER • OPEN ACCESS

The effect of organic mineral supplementation in the ration with total mixed fiber ammoniation as basal feed to rumen environment

To cite this article: A Imsya *et al* 2019 *IOP Conf. Ser.: Earth Environ. Sci.* **347** 012035

View the [article online](#) for updates and enhancements.

You may also like

- [Transverse magnetic field effect on the giant Goos-Hänchen shifts based on a degenerate two-level system](#)
R Nasehi
- [Experimental investigation and numerical simulation of triggered vacuum arc behavior under TMF/RMF-AMF contact](#)
Lijun Wang, Jie Deng, Kang Qin et al.
- [Peculiarities of the coherent population trapping resonance in the fluorescence obtained in a coated \$^{87}\text{Rb}\$ cell in the presence of transverse magnetic field: theory and experiment](#)
E Taskova, E Alipieva and G Todorov



The Electrochemical Society
Advancing solid state & electrochemical science & technology

242nd ECS Meeting

Oct 9 – 13, 2022 • Atlanta, GA, US

Extended abstract submission deadline: April 22, 2022

Connect. Engage. Champion. Empower. Accelerate.

MOVE SCIENCE FORWARD



Submit your abstract



The effect of organic mineral supplementation in the ration with total mixed fiber ammoniation as basal feed to rumen environment

A Imsya¹, Yuanita Windusari², and Riswandi¹

¹)Animal Science Department . Faculty of Agriculture. Sriwijaya University

²)Biology Science Department. Faculty of Mathematics and Natural Science. Sriwijaya University. Email:aimsya@yahoo.com

Abstract. This study aims to evaluate the effect of organic mineral supplementation on ration with total mixed fiber as basal feed to rumen environment. This study consists of four organic mineral level on ration and four replicates of each treatment. The treatments are : P1: 60% ammoniation TMF + 0 x Organic macrominerals (Ca, P, and S) NRC (2000) + 15% Swamp Legumes. P2: 60% ammonia TMF + 0.75 x Organic macrominerals (Ca, P, and S) NRC (2000) + 15% Swamp Legum. P3: 60% ammonia TMF + 1 x Organic macrominerals (Ca, P, and S) NRC (2000) + 15% Legum Swamp P4: 60% ammoniation TMF + 1.5 x Organic macrominerals (Ca, P, and S) NRC (2000) + 15% Swamp Legum. Each treatment is added with an organic micro-mineral consisting of 40 ppm organic Zn, 10 ppm organic Cu, 0.10 ppm organic Se, and 0.30 ppm Cr organic. Parameters measured are N-NH₃ concentration, total VFA concentration, SCFA concentration, pH rumen, methane gas production and microbial population. The results show that organic mineral supplementation had a significantly different effect ($P < 0.05$) on rumen condition characteristics (N-NH₃, total VFA, SCFA and methane), and bacterial cellulolytic populations but did not affect the total bacterial rumen and protozoan population. It can be concluded that organic mineral supplementation of Ca, P and S 1.5 times of requirement according to NRC (2000) gives the best result for improving the rumen environment with Total mixed fiber ammoniation (TMFA) as basal feed and 15 supplementation % legume swamp (kemon air).

1. Introduction

The low intake and utilization of feed ingredients of rumen ecosystems and unbalance products from the rumen fermentation so it decreases livestock production [1]. Some studies of supplementation for low-quality forages such as the use of rumen-degradable protein (RDP) or non-protein nitrogen (NPN) shows the increase of feed intake [2]. Digestibility increasing and rate of digestive in the rumen [3]. NPN supplementation such as urea to 30 g / kg Dry matter ration significantly increases consumption, digestibility of nutrients, volatile fatty acid (VFA) production, Nitrogen balance and contribution of microbial nitrogen and substantially will be increasing for body weight gain [4]. The efficiency of rumen ecosystems is also influenced by minerals. Mineral supplementation in rations can fulfil mineral deficiency, it can also support optimization of bioprocess in the rumen.

Forage with low digestibility is usually from the agricultural waste product such as oil palm fronds and rice straw. Total Mixed Fiber is a combination of several forages that serve as a source of fiber. In the previous study, the best composition of TMF was 20% Grass Kumpai Copper, 20% Rice Straw and 20% palm stem. Composition result in dry matter digestibility rate 36.32%. Organic material digestibility 35.96%. NDF Digestibility 17.86%. N- NH₃ 10.84mM. Partial VFA Concentration (12.39mM acetic acid, 4.39mM propionic acid and 4.36mM butyric acid) and 6.91mM methane gas



production in Vitro [5]. The utilization of TMF 60% ammoniation in Balinese cow ration gave the result of 0.47kg / head /day weight gain. but the low VFA and N-NH₃ rumen concentrations were 61.07mM and 38.75mM. Therefore, it is necessary to conduct research related to the utilization of TMF ammoniation with Swamp Legum as supplementation of protein and organic mineral in rations on beef cattle production. The use of organic minerals can increase the using value of minerals and it can also protect the bound the mineral organic material from degradation in the rumen. Metabolism of micro and macro minerals have interactions each other. The interaction can be a negative and positive interaction in the digestive system of livestock, especially in the rumen. Other things that affect the working of minerals in the rumen such as phytic acid, crude fiber, and other substances. This factor can reduce the availability of minerals in the rumen [7].

Based on the previous study, it is necessary to conduct study to obtain the level of swamp legume supplementation as a source of protein supplementation and the implementation of organic minerals in a ration with TMF Ammoniation as basal feed and its effect on increasing bioprocess in the rumen and increasing beef production.

2. Material and Method

2.1. Preparation for TMF ammoniation

The first stage is the processing of TMF with ammoniation method. The ammoniation process is performed using 4% urea of 1 kg TMF. TMF (20% kumpai tembaga grass+20% oil palm fronds+20%rice straw) is chopped to a theoretical cut length 2-3 cm by machine. Urea-treated TMF is prepared by using 4 kg urea of fertilizer grade (46% N) plus 100 kg of of water. sprayed onto 100 kg TMF. Then it is covered up. After that it is incubated for 21 days.

Preparation of Mineral Ca, P and S Organic. Organic Mineral Preparation by [7]. Preparation of initial solution: 10 M NaOH of 400 g dissolved into adistilled water up to 1 Liter. NaOH solution mixed into cooking oil as much as 912 g. Preparation of Ca Organic mineral: CaCO₃ 5M 680.33g dissolved in Aquades to 1Liter. this solution is mixed with the initial solution and composite until homogeneous. P organic Mineral: KH₂PO₄ 601.84 is diluted in aquadest to 1 Liter. then mixed with the initial solution. Making organic mineral S: initial solution into solution (NH₄)₂SO₄ 5 M 601.84 g and dissolved in aquades to 1 liter.

2.2. Method

The method used in this study is an experimental method with Completely Random Design (CRD) 4 treatments and 4 replications. The treatment consists of:

- P1 : 60 % TMFA + 0 x organic macrominerals (Ca, P, dan S) NRC (2000) + 15% swamp legum
- P2 : 60 % TMFA + 0.75 x organic macro minerals (Ca, P, dan S) NRC (2000) + 15% swamp legum
- P3 : 60 % TMFA + 1 x organic macrominerals (Ca, P, dan S) NRC (2000) + 15% swamp legum
- P4 : 60 % TMFA + 1.5 x organic macrominerals (Ca, P, dan S) NRC (2000) + 15% swamp legum

Each treatment is added with an organic micro-mineral consisting of 40 ppm organic Zn, 10 ppm organic Cu, 0.10 ppm organic Se, and 0.30 ppm organic Cr. Parameters measures characteristic of rumen conditions: N-NH₃ concentration, total VFA concentration, partial VFA concentration, pH rumen, methane gas production and rumen microbial population.

Table 1. Nutrition content of feedstuff for Ration (%)

No	Feed Stuff	Crude Protein	Crude Fiber	TDN
1	Rice brands	11.2	18.5	65
2	Milled Corn	10.82	2.61	83
3	Tofu Waste	11.6	7.79	70
4	Salt	0	0	0
5	Urea	2.61	0	0
6	TMFA	6.65	27.91	66.99
7	Kemon Air (Swamp Legum	28.02	17.25	44.86

Source: Laboratorium Teknologi Hasil Pertanian Universitas Sriwijaya (2016)

Table 2. Material dan Nutrition of Concentrate

No	Fedd Stuff	Percentage on concentrate	CP %	CF %	TDN %
1.	Rice Brands	60.5	6.77	11.19	39.32
2.	Milled Corn	12	1.29	0.31	9.96
3.	Tofu waste	26	3.01	2.02	18.2
4.	Salt	0.5	0	0	0
5.	Urea	1	2.61	0	0
Total		100	13.68	13.52	67.48

Source: Calculated based on Table 2 with using of feedstuff on concentrate

Table 3. Nutrition of Ration

Ration	(%)	Nutrition Content		
		CP	CF	TDN
TMFA	60	3.99	16.75	40.19
Concentrate	40	5.47	5.40	6.72
Total		5.47	22.15	67.18

Note: Calculated by Table 2 dan 3

2.3. The procedure for determining the characteristics of rumen conditions with in vitro techniques [8]

The rumen fluid is extracted using four layers of cheesecloth. Ten milliliters of rumen fluid is fed into incubation tubes and added with 40 ml of buffer solution. macro and micro mineral solutions. reduction and resazurin solutions [9]. Fifty milliliters of solution have been subsequently added 1g sample and CO₂ gas for 30 seconds. closed and incubated for 24, 48 and 72 hours. Each incubation time ends then incubation tube plus HgC₁₂ 2 drops to kill microbes. After all incubation period is completed. the media is centrifuged at 4000 rpm for 10 minutes. The media will separate into residues and supernatant. The residue was added with 50 ml of 0.2% pepsin solution and incubated for 48 hours. The incubation results were filtered using Whatman no 41, then dried in an oven at 60°C for 48 hours. Centrifugation supernatants were used to determine the characteristics of rumen conditions (concentrations of N-NH₃ and VFA. SCFA) and populations of cellulolytic bacteria and rumen protozoa.

2.3.1. Determination of In-vitro Media Characteristics

2.3.1.1. Determination of ammonia concentration of nitrogen (NH₃-N)

The NH₃-N concentration is determined by the Micro Conuse Diffusion technique. One ml of supernatant is placed in a partition of Conway's plate. On the other side is 1 ml of saturated Na₂CO₃

solution. In the center of small plate. it is filled boric acid with red indicator and green Brom cresol 1 ml. The Conway plate is tightly closed with a baseline and then mixed with Na_2CO_3 . After it is left for 24 hours at room temperature. N bounded to boric acid is titrated with H_2SO_4 0.005 N until the initial point of discoloration from blue to reddish. The $\text{NH}_3\text{-N}$ concentration is calculated using the formula:

$$\text{NH}_3\text{-N} = \text{ml titration} \times \text{N H}_2\text{SO}_4 \times 14 \times 1.00 \text{ (mg/100ml)}$$

2.3.1.2. Determination of total VFA concentration

Determination of VFA concentration is conducted by steam distillation method. A total of 5 ml of in vitro vitality of supernatant was inserted into Markham's tube added 1 ml of 15% H_2SO_4 . The distillation tube is immediately closed. The tube is connected to an Erlenmeyer flask containing 5 ml of NaOH 0.5 N. The distillation process ends until the distillate is accommodated to a volume of approximately 200 ml. Then add 1-2 drops of the phenolptalen indicator and in titers with HCl 0.5 N until the color change occurs.

The total VFA concentration is calculated using the formula:

$$\text{VFA} = (a - b) \times \text{N HCl} \times (1.000)/5 \text{ mM}$$

Note:

a= ml titrant blanko

b= ml titrant sample

2.3.1.3. Determination of Methane Gas Production

The determination of methane gas production is carried out by using short-chain fatty acid concentration data. consisting of concentrations of acetic acid. propionic acid. and butyric acid. while the analysis of short-chain fatty acid concentrations is carried out by using Gas Liquid Chromatography (GLC. HEWLETT PACKARD. 3700. USA). Estimated methane gas production is calculated using the formulas of Owens and Goetsch (1988) [10]:

$$\text{CH}_4 = 0.5 [\text{acetyc}] + 0.5 [\text{butyric}] - 0.25 [\text{propionic}]$$

[acetyc] : acetic acid concentration

[butyric] : butyric acid concentration

[propionic]: propionic acid concentration

2.3.2. Protozoa and Cellulolytic Bacteria Population

Calculation of Protozoa Population

Protozoa populations are calculated using counting chamber and formal saline solution. The formal saline solution is a mixture of 100 ml of 4% formalin with 8 g NaCl in 900 ml of solution and trypan blue 0.6 gr. The ratio of formal saline solution and rumen fluid sample is 1: 1. Two drops of the mixture are placed on the counting chamber with a thickness of 0.1 mm from 16 boxes that are read as many as 5 boxes. Protozoa population calculations are performed using a microscope at 40 times magnification.

$$\text{Protozoa/ml cairan rumen} = \frac{1}{(0,1 \times 0,0625 \times 16 \times 5)} \times 1000 \times C \times \text{FP}$$

Note:

C = Protozoa population in a counting chamber

FP = Dilution Factor

Bacterial population calculations are performed by the Hungate method (Ogimoto and Imai. 1981)[11]. The population of cellulolytic bacteria is calculated using bacterial growth medium in the form of Carboxy Methyl Cellulose (CMC). The rumen fluid to be identified by the cellulolytic bacteria is diluted by 4 dilution levels. From each series. the dilution tube is taken 0.1 ml and is transferred to CMC media to be rotated while the water is fed. so that the medium can solidify evenly on the inner tube wall. The tube incubated for 2-3 days. The bacterial population can be calculated by the formula Bacterial Population = $n \times 10x/0.05 \times 0.1$ cfu/ml

2.4. Data analysis

The data of this study are analyzed statistically according to the design used. the treatment effect continued with Duncan's Multi-Range Test [12].

3. Results and Discussions

3.1. The effect of organic mineral supplementation of Ca, P and S on rumen fermentation condition

The condition of rumen fermentation is an indicator of the occurrence of metabolism in the rumen. Indicators of rumen fermentation conditions are illustrated from the concentrations of N-NH₃, total VFA, partial VFA, pH and methane gas production. Based on the results of statistical analysis, it indicates that the use of TMF ammoniation as basal feed with organic mineral supplementation of Ca, P and S gave significant different effect ($P < 0.05$) to N-NH₃ concentration, the total concentration of VFA, acetate and propionate concentration and methane gas production. While the concentration of butyrate and pH rumen indicate that there is no significant different effect ($P > 0.05$) (Table 4 and Figure 1)

Further tests of N-NH₃ concentration parameters result in the use of 60% ammoniation of TMF in rations with organic mineral supplementation of Ca, P and S 1.5 times from NRC recommendations resulting in significantly higher N-NH₃ concentrations compared with treatment without supplementation and organic mineral supplementation of Ca, P and S 0.75 times from the recommendation of NRC, but it does not give different effect to the organic mineral supplementation of Ca, P and S according to recommendation of NRC. Supplementation of Ca, P and S organic minerals in accordance with NRC recommendations in this study resulted N-NH₃ Concentration significantly higher ($P < 0.05$) than without supplementation, but gave the same effect as 0.75 times supplementation of NRC recommendations, while supplementation organic minerals Ca, P and S 0.75 times from NRC recommendations have the same effect as those without supplementation.

Table 4. The effect of organic mineral Ca, P dan S supplementation to rumen condition

The Condition of Rumen Fermentation	Treatments			
	P0	P1	P2	P3
N-NH ₃	5.24 ^a	7.55 ^{ab}	9.53 ^{bc}	13.91 ^c
Total VFA	80.18 ^a	105.99 ^b	133.76 ^c	165.31 ^d
Acetate	5.35 ^a	4.15 ^{ab}	4.14 ^{ab}	3.32 ^b
Propionate	1.08 ^a	0.98 ^{ab}	0.86 ^{ab}	0.45 ^b
Butyrate	0.25	0.25	0.15	0.16
Methane gas	2.53 ^a	1.95 ^b	1.93 ^b	1.63 ^b
pH	6.96	6.86	6.71	6.71

Note: Different superscripts on the same line indicated that the treatment gave a significantly different effect ($P < 0.005$)

At the total concentration of VFA the further test indicates that the organic mineral supplementation of Ca, P and S 1.5 times from the NRC recommendation is significantly higher ($P < 0.05$) than the other three treatments, as well as the supplementation of NRC recommendations resulting in total concentration of real VFA ($P < 0.05$) is higher than 0.75 times supplementation of the NRC recommendations and those without supplements, while organic mineral supplementation 0.75 times from the recommendation resulting the same total VFA concentration with no supplementation.

The result of Further test for partial VFA concentrations indicates that 1.5 times the organic mineral supplementation of the NRC recommendation result in higher concentrations of acetate and propionate ($P < 0.05$) compared with no supplementation but it gives the same effect as 0.75 supplementation and NRC-recommended supplementation. An increase in N-NH₃ concentration with an increase in organic mineral supplementation of Ca, P and S is up to 1.5 times from NRC recommendation. This increase is related to the increase of crude protein digestibility in the rumen which

also increased with the presence of organic mineral supplements Ca, P and S 1.5 times from the recommendation of NRC. N-NH₃ is the result of feed protein degradation, so if the protein digestibility value increases then N-NH₃ concentration will also increase. [13] explains that the degradation of protein sources is derived from feed ingredients and NPN (Nitrogen Non-Protein) will produce N-NH₃ in the rumen. The N-NH₃ concentration in the rumen is an indication of the ability of rumen microbes to degrade proteins in the ration [14]. Based on the average N-NH₃ concentration obtained in this study is between 5.24-13.91 mM. The result of N-NH₃ concentration is sufficient for the N-NH₃ requirement for growth of rumen microbes and for livestock consumption. [15] state that the N-NH₃ concentration requirement for rumen microbial synthesis is 3.57-7.14mM, while Ref. [16] states that the optimum N-NH₃ rumen concentration for NDF degradation and consumption between 8-15 mg N / dl.

Total VFA concentrations are also increasing with the use of basal 60% TMF ammonia ration supplemented with Ca, P and S organic minerals in the ration. Increased supplementation of Ca, P and S organic minerals in rations to 1.5 times from Ref. [17] recommendations gives the highest total VFA concentration level of 165.31mM. This increase in total VFA concentration in the presence of organic mineral supplements Ca, P and S are associated with the increased digestibility of crude fiber, ADF, and NDF. This occurs because VFA is the final result of fibre digestibility in the ration. [18] states that the carbohydrate component in the ration of cellulose, hemicellulose, starch, and pectin digested with the final result of VFA

Pentosan is the main result of hemicellulosic degradation in the rumen. The hemicellulase enzyme hydrolyzes the hemicellulose into xylose and uronic acid. The uronic acid is also produced from the decomposition of pectin by pectinase and polygalactonidase. The second stage is simple sugar metabolism by rumen microbes intracellularly into pyruvic acid. Furthermore, pyruvic acid is converted to VFA [19]. [20] state that the activity of microbes in degrading fiber in the rumen will produce VFA. VFA is the final product of carbohydrate fermentation and is the main source of energy for ruminant livestock [21]. The total VFA concentrations obtained in this study ranged from 80.18mM-165.31mM were sufficient for ruminants, as [22] found that VFA needs for ruminants ranged from 70-130mM, while [23] VFA concentrations for rumen microbial growth are 80-160mM.

In this study, there is decreased concentration of acetate and propionate by increasing 1.5 times organic mineral supplementation of Ca, P and S from [17] recommendation with basal diet 60% ammoniation of TMF, but the supplementation does not affect butyric acid concentration (Figure 1).

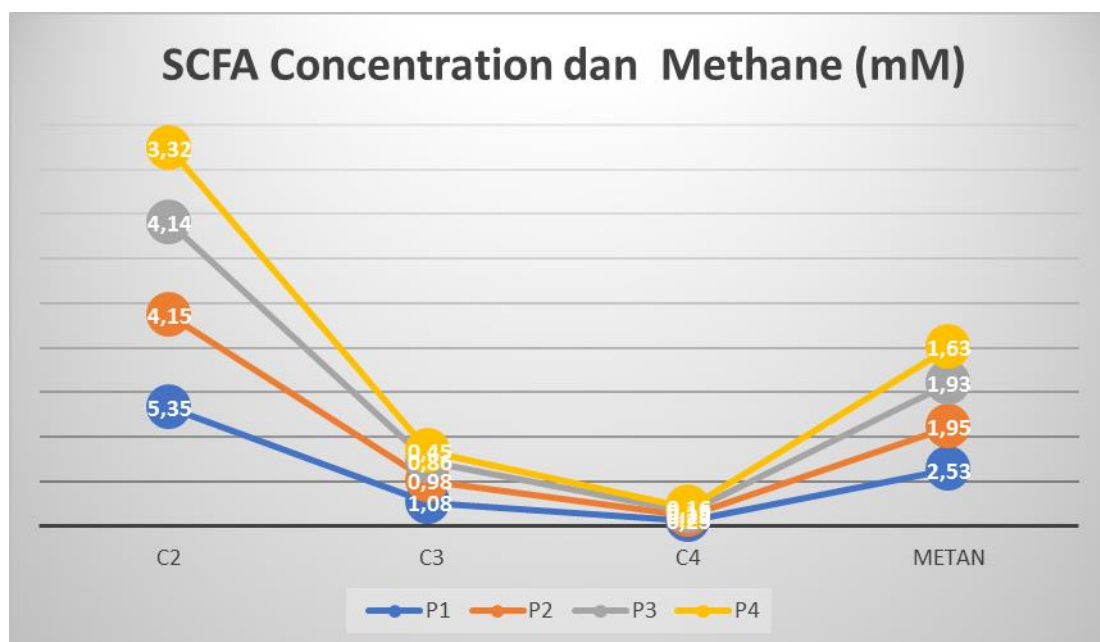


Figure 1. SCFA Concentration dan Methane production

The results of this study are in line with the study conducted by [24] which states that vitamin-mineral supplementation in beef cattle ration with grass basalt feed Gajah suppresses concentrations of acetate and propionate acids but not yet affect the concentration of butyrate. Decreased concentrations of acetate and propionate acids also result in a decrease in methane gas production. This is related to the population of rumen protozoa that is not significantly different, while in the metabolic process of methane production, protozoa play a big role. Ref. [25] states that fermentation of fiber with the acetic end result is closely related to methane gas production. The production of acetic acid and propionate has a major effect on methane gas. Methane gas production is closely related to the amount of acetic acid and butyric acid production. While propionate acid production is not followed by the production of H₂ and CO₂ [26].

3.2. Effect of organic mineral supplementation of Ca, P and S on Rumen Microbial Population

Rumen microbes play an important role in feed metabolism in the rumen. rumen microbes produce enzymes that play a role in the degradation of crude fiber and can also be used as a source of protein and vitamin synthesis for the livestock itself. Based on the research that has been done, the use of 60% ammonia TMF with organic mineral supplementation Ca, p and S on rumen microbes presented in table 5.

Based on statistical analysis, it is found that 60% ammonia of TMF as a basal diet with organic mineral supplementation of Ca, P and S in ration gave significant different effect ($P < 0.05$) to cellulolytic bacteria population but did not give significant effect ($P > 0.05$) to total bacteria and rumen protozoal populations

Table 5. The rumen microbial population receives 60% ammonia TMF basal feed with Ca, P and S organic mineral supplementation

Treatment	Cellulolytic Bacteria	Total bacteria	Protozoa
Log cell/mn rumen liquid			
P0	7.46 ^a	9.09	5.78
P1	7.16 ^a	9.25	5.45
P2	8.55 ^b	9.40	5.63
P3	8.62 ^b	9.22	5.34

note: Different superscripts in the same column indicates significantly different treatment effect ($P < 0.05$)

Based on the further tests on parameters of cellulolytic bacteria population, it indicates that the use of a 60% TMF basal ration with Ca, P and S organic mineral supplementation in rations with 1 and 1.5 times of NRC recommendations is significantly higher in the population of the cellulolytic bacteria compared with those not supplemented and 0.75 times supplementation from NRC recommendations. The utilization of 60% ammonia of TMF in rations with organic mineral supplementation of Ca, P and S has not affected the total population of rumen microbes, but for cellulolytic bacteria, the population increased with organic mineral supplementation of Ca, P and S 1 to 1.5 times recommended by NRC. This indicates the growth and positive response of organic mineral supplementation to cellulolytic bacteria. According to Ref. [27], P and S minerals are needed to digest cellulose. Further Ref. [28] states that minerals such as Ca, Mg, and S are proven by in vitro can stimulate cellulolytic bacterial activity. Minerals needed for cellulolytic bacteria activity are Ca, P, Mg, S, Zn, Co, and Mn [25]

Increased populations of cellulolytic bacteria can affect the digestibility of crude fiber and the production of VFA. It can be seen in Tables 1 and 2 that there is an increase in the digestibility of crude fiber, NDF, ADF and VFA production by organic mineral supplementation of Ca, P and S in rations up to 1.5 times from NRC recommendations. Ref. [21] states that an increase in the population of cellulolytic bacteria can stimulate the digestion of complex carbohydrates better and faster. Complex carbohydrates from high-fiber feeds are converted to VFA by cellulolytic microbes and absorbed to fulfill energy requirements.

The total population of rumen bacteria from this study ranges from 109 cells /ml of rumen fluid. The total number of rumen bacteria obtained is still within the normal range of rumen bacteria in cattle. This is consistent with that stated by Ref. [25] the total bacteria in the rumen can reach 21 x 10⁹ cells/ml of rumen fluid. Similarly, the population of cellulolytic bacteria obtained using TMF 60% ammoniation in the ration with organic mineral supplementation of Ca, P and S ranges from 107 to 108 cells/ml of rumen fluid

The rumen protozoa populations obtained from the use of TMF 60% ammoniation in rations with organic mineral supplementation of Ca, P and S ranges from 5.34 to 5.88 (log cells/ml of rumen fluid) or 105 cells/ml of rumen fluid. The results of this study are still within the normal number of population in cattle. as[26] suggests that the population of protozoa is in the range of 10⁵- 10⁶sel / ml of rumen fluid or about 40-50% of rumen biomass, but this may be affected by the composition of the feed consumed by the livestock itself. Protozoa is important for digestion to maintain pH. Usually, rapid rumen pH decreases when non-structural carbohydrates are fermented rapidly. This happens when the amount of bacteria is high enough. In the presence of protozoa, some bacteria are eaten so that the fermentable substance is somewhat slowly fermented and the pH does not decrease drastically[29]. Protozoa play a role in digesting low-quality forage and its contribution reaches 12-20% [30].

4. Conclusion

Based on the research it can be concluded that: The use of 60% TMF ammoniation in the ration with organic mineral supplementation of Ca, P and S in the ration can improve the fermentative condition in rumen and population of cellulolytic bacteria, but non-significantly affect the total population of bacteria and protozoa and can decrease methane gas production in vitro. The organic mineral supplementation level of Ca, P and S 1.5 times from NRC recommendation with 60% of TMF ammoniation gives the best result to the nutrition digestibility, rumen fermentative condition and rumen microbe.

References

- [1] Granum, G., Wanapat, M., Pakdee, P., Wachirapakorn, C. dan Toburan, W. (2007). A comparative study on the effect of Cassava Hay Supplementation in Swamp buffaloes (*Bubalus Bubalis*) and Cattle (*Bos Indicus*) 20(9), page: 1389–1396.
- [2] Huntington, G. B., Archibeque, S. L., Science, A. dan Carolina, N. (2000) "Practical aspects of urea and ammonia metabolism in ruminants." *Journal of Animal Science*, 77(May 2014), Page. 1–11. doi: 10.2527/jas2000.77E-Suppl1y.
- [3] Paengkoum, P., Liang, J. B., Jalan, Z. A. dan Basery, M. (2006) "Utilization of steam-treated oil palm fronds in growing Saanen goats: II. Supplementation with energy and urea." *Asian-Australasian Journal of Animal Sciences*, 19(11), Page. 1623–1631.
- [4] Castillo, R., Kebreab, E., Beever, D. E., Barbi, J. H., Sutton, J. D., Kirby, H. C. dan France, J. (2001) "The effect of energy supplementation on nitrogen utilization in lactating dairy cows fed grass silage diets." page. 240–246.
- [5] Imsya, A., Muhakka dan Yosi, F. (2016) "Use of swamp grass and agricultural waste as materials for total mixed fiber (TMF) in rations and its effect on methane gas production and production efficiency of beef cattle." *Pakistan Journal of Nutrition*, 15(4), page. 342–346. doi: 10.3923/pjn.2016.342.346.
- [6] Muhtarudin. 2003. Preparation and use of Zn-Proteinate in rations to improve the value of wheat bran biodiesel and optimization of bioprocess in the digestion of goats. *Journal of Applied Agricultural Research*, Vol. III (5): 385-393.
- [7] Muhtarudin, Liman, and Y. Widodo. 2003. Use of Organic Zinc and Polyunsaturated Fatty Acid in Efforts to Increase the Availability of Zinc, Growth, and Quality of Goat Meat. *Research Report on Competitive Grants for Universities*.
- [8] Tilley, J.M.A. dan R.A. Terry. 1963. A two-stage technique for the in vitro digestion of forage crops. *Journal of the British Grassland Society* 18:104111.

- [9] Goering, H.K. and Van Soest, P.J. 1970. Forage Fiber Analysis (Apparatus Reagents, Procedures and Some Applications). Agriculture Handbook. United States Department of Agriculture. Washington DC.
- [10] Owens, F.N. & Goetsch, A.L.. 1988. Ruminant fermentation. In: The ruminant animal: digestive physiology and nutrition. Ed. Church, D.C.. Prentice-Hall, Englewood Cliffs, NJ. pp. 145-171
- [11] Ogimoto, K. & S. Imai. 1981. Atlas of Rumen Microbiology. Tokyo. Japan Scientific Societies Press. VII+23 Ip.
- [12] Steel R.G.D. and J.H. Torrie. 2002. Principles and Procedures of Statistics: Biometrical Approach. Second Edition McGraw-Hill Book Company. London. 633 p.
- [13] Muhtarudin and Liman. 2006. Determination of Mineral Level of Organic Minerals To Fix Rumen Bioproses In Goats In Vitro. Journal of Agricultural Sciences Indonesia. Vol.8 no.2. page: 132-140
- [14] Prihandono, R. 2001. Effect of bioplus probiotic supplementation. lysine Zn and lemuru oil (*Sardinella longiceps*) on feed use rate and rumen fermentation production of sheep. Essay. Faculty of Animal Husbandry. Bogor Agricultural University. Bogor. (Unpublished)
- [15] E.R. Orskov. 1982. Protein Nutrition in Ruminants: Academic Press Inc., London. 155pp
- [16] Dermann, E. 2009. Parameterization of ruminal fiber degradation in low-quality tropica forage using michaelis-menten kinetics. *Livestock Sci* 126:136-146.
- [17] National Research Council. 2000. National Research Council Nutrient Requirements of Beef Cattle. National Academy of Science. Washington D. C.
- [18] Puastuti, W. 2005. Measurement of protein ration quality and its relevance to nitrogen retention and sheep growth. Dissertation. Graduate School. Bogor Agricultural University. Bogor.
- [19] McDonald, P., R. A. Edward, J. F. D. Greenhalgh, & C. A. Morgan. 2002. Animal Nutrition. 6th Edition. Ashford Colour Press. New York.
- [20] Obara, Y., K. Shimbayashi, and T. Yonemura. 1975. Change of ruminal properties of sheep during feeding urea diet. *Jpn. J. Zootech. Sci.* 46:140-145
- [21] Parakkasi, A. 1999. Ruminant Nutrition and Feed Science. University of Indonesia Press. Jakarta.
- [22] Wanapat, M., N. Anantasook, P. Rowlinson, R. Pilajun, and P. Gunun. 2013. Effect of carbohydrate sources and levels of cottonseed meal in concentrate on feed intake, nutrient digestibility, rumen fermentation and microbial protein synthesis in young dairy bulls. *Asian-Aust. J. Anim. Sci.* 26:529-536.
- [23] Sutardi, T. 1980. The Foundation of Nutrition Science. Volume I. Department of Animal Food Science. Faculty of Animal Husbandry. Bogor Agricultural University. Bogor.
- [24] Puspitasari, N. M., I. B. G. Partama, Dan I G. L. O. Ca. 2015. Effect of Vitamin Mineral Supplementation on Nutrient Digestibility And Rumen Cattle Fermentation Product Bali Which Given Ransum Based on Elephant Grass. *Ranch Scientific Magazine*. Vol 18 no.3 Hal: 83-88
- [25] Arora, S. P. 1989. Digestion of Microbes in Ruminant Animals. Translator: R. Muwarni. Gajah Mada University Press. Yogyakarta
- [26] Church, D. C. 2002. Digestive Physiology and Nutrition of Ruminants. Vol. 1. 11th ed. Oxford Press. Portland. Chusaemi
- [27] Komizarczuk, S. & M. Durrand. 1991. Effect of mineral on microbial metabolism. Rumen Microbial Metabolism and Ruminant Digestion. J.P. Jouany (Ed) INRA publ., Versailles.
- [28] Hungate, R.E. 1966. The Rumen and Its Microbes. Academic Press. London
- [29] Vieira, D. M., M. Ivan and P. Y. Jui. 1984. The effect of ciliate protozoa on the flow of amino acids from the Stomach of sheep. *Can. J. Anim. Sci.* 64 (suppl): 22-23.
- [30] Soeharsono, K. A. Kamil, and A. Mushawwir. 2010. The gastrointestinal system of ruminants. In: Animal Physiology. Phenomenon and Nomena Basics of Functions and Organ Interactions on Animals. Soeharsono (ed.). Widya Padjadjaran. Bandung. Hal: 182-284.