

BUKTI KORESPONDENSI

ARTIKEL INTERNATIONAL SEMINAR TERINDEX SCOPUS

Judul Makalah : Real-Time Irrigation Scheduling for Upland Crop based on Soil and Climate Characteristics of Tidal Lowland Area in South Sumatra

Seminar Internasional : The First International Seminar on Civil and Environmental Engineering (1st ISCEE) 2020 Bogor, Indonesia, November 2nd – 4th, 2020

Daftar korespondensi :

No	Tanggal Korespondensi	Kegiatan
01	21 Juli 2020	Penyerahan Abstrak
02	28 Juli 2020	Penerimaan Abstrak
03	13 September 2020	Mengingatkan kembali pengumpulan makalah
04	6 Oktober 2020	Hasil Review Makalah
05	2 November 2020	Penyerahan Makalah Perbaikan
06	7 Januari 2020	Makalah terbit online di https://iopscience.iop.org/article/10.1088/1755-1315/622/1/012051

PENYERAHAN ABSTRAK

Your abstract submission received succesfully

Yahoo/Email Masuk

ISCEE 2020 <iscee@apps.ipb.ac.id>

Kepada:MOMON SODIK IMANUDIN

Sel, 21 Jul 2020 jam 11.19



ISCEE 2020
Bogor, Indonesia, November 2nd-4th 2020

Dear Dr. MOMON SODIK IMANUDIN.

We have successfully received your abstract, "Rill Time Irrigation Schedulling for Dry Land Crop (Non-Paddy) Based on Soil and Climate Charactristics of Lowland Area in South Sumatera'. The accepted abstract will be announced at May 16th 2020.

With best regards,
ISCEE 2020

PENERIMAAN ABSTRAK

Notification of Abstract Acceptance
Yahoo/Terkirim

ISCEE . <iscee@apps.ipb.ac.id>

Kepada: MOMON SODIK IMANUDIN

Sel, 28 Jul 2020 jam 23.03

Dear Authors: **Momon Sodik Imanudin**

We are pleased to inform you that your abstract entitled:

Rill Time Irrigation Scheduling for Dry Land Crop (Non-Paddy) Based on Soil and Climate Characteristics of Lowland Area in South Sumatera

Has been reviewed and accepted for presentation at 1st ISCEE 2020 to be held on November 2nd – 4th, 2020. Please find the official Letter of Acceptance and reviewer's comment on the attachment.

Please submit your full paper for further publication process and make payment for the registration fee as the presenter before the deadline through our website at <https://iscee.ipb.ac.id/4766-2/> and <https://iscee.ipb.ac.id/register-submission-2/>, respectively. Author guideline and template of full paper available at <https://iscee.ipb.ac.id/4766-2/>. For more information, please visit our website or contact the organizing committee at iscee@apps.ipb.ac.id.

On behalf of the 1st ISCEE Committee, we greatly appreciate your kind contribution and cooperation in advance, looking forward to meeting you in November this year.

--

The 1st International Seminar on Civil and Environmental Engineering

ISCEE 2020, Bogor, Indonesia

o

ISCEE 2020 <iscee@apps.ipb.ac.id>

Kepada: Momon Unsri

Min, 13 Sep 2020 jam 09.28

Dear MOMON SODIK IMANUDIN,

The Organizing Committee of the 1st International Seminar on Civil and Environmental Engineering (ISCEE) 2020 would like to warmly thank you for your submitted abstract entitled: "Rill Time Irrigation Scheduling for Dry Land Crop (Non-Paddy) Based on Soil and Climate Characteristics of Lowland Area in South Sumatera".

This is a friendly reminder that the deadline for full paper submission and conference registration fee payment is September 15th, 2020. The accepted and presented papers will be submitted for publication to the IOP Conference Series – Earth and Environmental Science, which is indexed by Scopus.

Please submit your full paper through our website at <https://iscee.ipb.ac.id/4766-2/>. Author guideline and full paper template are also available in that link.

Conference registration fee payment can be made with a bank transfer to:

Bank : BNI Branch IPB Bogor

Account name : Nora H. Pandjaitan

Account number : 0324098522

SWIFT CODE : BNINIDJABGR

To confirm your payment, please send us the copy of your transfer receipt through our confirmation system here: <https://iscee.ipb.ac.id/register-submission-2/>.

Please be noted that the payment for publication fee is available following the review process and after your paper is ready to be submitted for publication.

Further details are available at our conference website <https://iscee.ipb.ac.id/>, or you can contact the organizing committee of 1st ISCEE 2020 at iscee@apps.ipb.ac.id. Take advantage of this exciting opportunity to present your research, talk to leading experts in the field, and extend your networks.

We look forward to seeing you soon in the 1st ISCEE 2020 and stay safe.

Sincerely Yours,

Heriansyah Putra

Chairman of Organizing Committee

--

The 1st International Seminar on Civil and Environmental Engineering
ISCEE 2020, Bogor, Indonesia

Hasil Review

ISCEE . <iscee@apps.ipb.ac.id>

Kepada:momonsodikimanudin@fp.unsri.ac.id,MOMON SODIK IMANUDIN

Sel, 6 Okt 2020 jam 08.20

Dear **M S Imanudin:**

On behalf of the ISCEE 2020 Committee, we would like to inform you that your paper **ISCEE 061** entitled '**Real-Time Irrigation Scheduling For Dry Land Crop (Non-Paddy) Based On Soil And Climate Characteristics Of Tidal Lowland Area In South Sumatra**' has been reviewed by experts in the related field, and we request that you make **minor revision** before it is processed further. Please find your reviewed manuscript/s (**include any comment**) and the review report at the attachment.

Please revise your manuscript according to the reviewer's comment, and re-submit your revised manuscript through <https://iscee.ipb.ac.id/revised-paper-submission/> before **October 13th, 2020**. We ask you to accommodate all reviewers' comments at both manuscript and form. Please mark all modified in the manuscript with the other color or track changes function in Microsoft Word to be easily visible to the editor. The entire comments should be addressed, as acceptance is conditional on an appropriate response to the requirements and comments.

The editor has also conducted the Language evaluation for your manuscript. The suggested changes are marked using "track changes" (if any); please confirm, modify, or accept the revised. The similarity evaluation has also been conducted using Turnitin; the manuscript should be free of plagiarism, and similarity should be below 20%; your paper's similarity report is also attached. Please ensure your manuscript meets the similarity requirement.

In addition, please check the IOP conference template again and make sure that your paper follows the author guideline and template (available at <https://iscee.ipb.ac.id/4766-2/>). Please note that papers that will be submitted to IOP Conferences Series Earth and Environmental Science are accepted and presented at the conference.

If you have any questions regarding the reviews of your paper, please do not hesitate to contact us

See you on the 1st ISCEE 2020.

Best regards,

Heriansyah Putra

--

The 1st International Seminar on Civil and Environmental Engineering

Reviewer comments and Reply form

Paper ID : ISCEE 061

Paper Title : Real-Time Irrigation Scheduling For Dry Land Crop (Non-Paddy)
Based On Soil And Climate Characteristics Of Tidal Lowland Area In
South Sumatra

Authors : M S Imanudin, S J Priatna, B M B Prayitno and C.Arif

Recommendation : **Accepted with minor revision**

Editor and Reviewer's Comments

Editor (Preliminary evaluation)	
Comments for Authors	Authors' Reply
1. Overall score of similarity index is 4%, thus the paper meets with the similarity requirement which is 20%. 2. The entire manuscript still has the minor grammar and spelling correction, please check it carefully and using the English proofread i.e., Grammarly or any related software if possible	

Reviewer #1	
Comments for Authors	Authors' Reply
Accept for presentation after revision, and need re-review for publication. Detail corrections are in the text.	

Reviewer #2	
Comments for Authors	Authors' Reply
1. proper use of sustainable agriculture more in longterm horizon, not in event cultivation. 2. not considering the flooding zonation types as indicated in conclusion? As the study focus on MT3 on tidal area of typology C, this condition should be reflected in title and in study description. 3. Apparently need to show more rainfall data analysis, as something not right apparent. What is the annual rainfall for 2015 and 2019? Can indicate in Figure 4 and compare with values at Figure 2. 4. Be more specific as to the crop being study and in the	

Reviewer #2	
Comments for Authors	Authors' Reply
analysis of results. Table 2 for Tomato? 5. Monthly water balance at dry season condition in 2019? 6. in conclusion there is stated about tidal area of typology C. Where is this info come from?	

Real-Time Irrigation Scheduling For Upland Crops Based On Soil And Climate Characteristics Of Tidal Lowland Area In South Sumatra

Abstract. Water requirements for evapotranspiration take place continuously while water sources from rainfall occur according to the season and are not evenly distributed. The research aims to determine the water requirement of plants based on soil and climate characteristics in the lowland area of South Sumatra. The study was conducted at the Soil Physics Laboratory, Soil Department, Faculty of Agriculture, Sriwijaya University. Soil samples were taken from lowland areas at Tidal Lowland Reclamation in Telang I Banyuasin. Field research was conducted from March to November 2019. Climatic data were differentiated into rainfall conditions below 2,500 mm/year and more than 2,500 mm/year. The BUDGET model was used for simulations to determine real-time irrigation scheduling. The indicator crop is tomatoes, with a scenario arranged at the dry season planting period. The results showed that in the condition of annual rainfall < 2,500 mm, farmers need more irrigation frequencies compared to rainfall > 2,500 mm. Irrigation is not required under normal climatic conditions. Farmers only need to maintain the groundwater table under 40 cm using gate operation in the tertiary canal. Rainfall was sufficient to fulfill crop evapotranspiration. However, the irrigation scheduling was done every week during the initial growing stage and every ten days in the vegetative up to generative stages in the dry climatic condition.

1. Introduction

The plant requires water for its growth and development. The plant continuously needs water, but water availability in terms of quantity, place, and time is not always available. This condition especially occurs during the dry season resulting in a decrease in farming enterprise. Irrigation effort is needed for sustainable agricultural cultivation.

Agricultural cultivation effort at tidal lowland area at the wet season is prioritized for rice crops. Therefore, the planting pattern consists of rice-rice. An effort to increase the planting index into 300 % is made by adding vegetable crops or second crops in the third planting season (MT3). The primary constraint at the MT3 period is water deficiency for crops [1]. Thus, a water management plan is required by considering water resource potential, water quality, and water application method. Water management strategy should include how much water to be applied, where it is applied, and priority during the dry season [2]. The capillary water movement is the main water source to fulfill crop evaporation requirement at wetland because water supply for crops can be fulfilled by capillary water movement from the groundwater table 40 cm below the soil surface [3]. Kadioglu et al. [4] had reported that the contribution of shallow groundwater table at loam soil within a depth of 30, 60, and 90 cm to supply crop water requirement was 97%, 71%, and 68%, respectively. Therefore, irrigation scheduling at the swamp area is closely related to groundwater table status in addition to rainfall. Information related to water application consisting of applied water quantity and irrigation scheduling is essential for agricultural cultivation in the tidal lowland area in the third planting season or MT3 (June-September). In order to fully understand the irrigation scheduling concept, several processes related to water balance within the root zone must be understood. The governing components are evapotranspiration calculation, the input of soil water and rainfall, soil water content status, crop water requirement, and computer modeling [2, 5]. Irrigation scheduling and calculation of crop water

Comment [A1]: use term sustainable agriculture more in longterm horizon, not in event cultivation.

Comment [A2]: not considering the flooding zonation types?

requirements in this research are aided by using BUDGET software [6]. The required data input consisted of climatic data, rainfall, soil characteristics, and crop. The research objectives were to determine the quantity of crop water requirements, irrigation water scheduling, and field strategy related to water application into the crop. The indicator crop was tomato.

2. Methodology

2.1. Place and Time

This study was conducted by soil sample taking and observation of land use at Telang Jaya Village of the tidal lowland reclamation area in Banyuasin District from June to July 2020.

2.2 Material and Equipment

This study's materials and equipment consisted of the soil sample, climatic data, daily rainfall at dry and wet seasons, computer software of ETo, and the BUDGET model.

2.2. Method

This study consisted of two stages. The first stage was field activity of soil sampling at a depth of 0-30 cm and 30-60 cm layers for textural analysis in the laboratory. Soil water retention characteristics such as saturated water content, field capacity, and permanent wilting point can be predicted from this soil texture data. This data is important in the calculation of irrigation water scheduling simulation. Observation of field conditions was conducted to access land-use type and water resource potential for irrigation.

The second stage was laboratory work, which consisted of soil textural analysis with the hydrometer and computer simulations. Calculation of crop water requirement (consumptive use) was conducted by calculating potential evapotranspiration which was affected by climatological factors. The calculation model for daily ETo was conducted by using the Penman-Monteith equation with the aid of a computer model of the ETo calculator [7]. Water requirement for the crop is ETo value multiplied by crop coefficient as follows:

$$ET_c = k_c \times E_{T_o} \quad [1]$$

where:

ET_c = Crop evapotranspiration (mm.d^{-1})

E_{T_o} = Reference evapotranspiration (mm.d^{-1})

k_c = crop coefficient

Irrigation water scheduling is conducted by using the BUDGET computer model. The BUDGET calculates water content within soil profiles affected by water inflow and water outflow within a certain period. Soil profile generally consisted of several layers that have specific characteristics. At least information on soil texture should be available. The model calculates the change in daily water content storage. The main data input for the model is daily rainfall data, potential evapotranspiration data (E_{T_o}), crop data, which consisted of the crop coefficient for each growing stage.

Calculation of irrigation scheduling for tomato crops has consisted of two criteria, i.e., water quantity and water application period, that will be given through irrigation. This study's chosen scheduling criteria was a constant time interval with different water quantity applications based on soil water availability conditions or soil moisture. The soil will be irrigated again to fulfill the field capacity of the soil (pF 2.5). The best irrigation scheduling criteria are based on water availability within the soil, which provides the highest efficiency of the irrigation system. Soil should be immediately irrigated before it attains a permanent wilting point condition (pF 4.2). The criterion for the irrigation time used was a constant or fixed interval of 10 days. The selection of this interval period was adjusted to water requirement calculation and rainfall. Operational implementation of irrigation time will be easier to be applied by farmers according to the simulated schedule from the BUDGET software. Irrigation was done as an addition to the water supply to fulfill crop water requirements that could not be fulfilled by effective rainfall. Simulation results will show soil conditions with a lack of water that requires farmers to conduct irrigation (real-time irrigation scheduling).

3. Results and Discussion

3.1. General Description of Study Area

The field research was conducted at Telang Jaya Village, located at Jembatan II line number 8 (Primer 8), Muara Telang Sub-district. This location is one of the tidal lowland areas which is opened for the transmigration program in 1981. The main water source is from rainfall, and high tidal water only enters channels so that water in the channel only has a function to maintain groundwater table in the land is not quick drawdown.

Telang Jaya Village has four sub-villages and 22 heads of families. This village's distance to the Sub-district capital is 0.2 km, with a traveling time of 5 minutes. Agricultural land in this area is classified as C typology class (rainfed) covering about 960 ha. The previous model of water management network is based on a *one-way flow system* in which high tidal water enters through the primary channel and subsequently into a secondary provider channel in the form of a village irrigation channel (SPD), then into a tertiary provider channel, and finally, flow into farmland. During excessive water conditions (wet season), water from farmland outflow through the drainage tertiary channel and then into the main drainage channel (SDU) and subsequently into the primary channel. However, due to the topography effect and operational conducted by farmers, the flow has two directions. Water supply into the tertiary channel has come from SPD as well as SDU. During the low tide water period, water also flows into two directions, i.e., into SPD and SDU. These two ways, flow is capable of accelerating the leaching process.

Land ownership of farmers is 2 ha consisting of 1 ha Farm Land I (LU-1) and 1 ha Farm Land 2 (LU-2). Nowadays the land ownership had changed in which one farmer may have more than 2 ha of land. The planting pattern depends on land conditions, flooding type, water availability, and the existing drainage network facilities. There are two planting seasons, i.e., Planting Season 1 (MT1) consisting of rice cultivation from November to March and Planting Season 2 (MT2) from March to June. It is encouraged nowadays to have three times planting from June to September for horticultural crops or

second crops. The tomato crop has high economic value, although its main constraint is lack of water in the dry season. There is no water supply from high tidal water irrigation, so that surface irrigation is needed.

An overview of the channel system can be seen in Figure 1. The primary channel is to convey water during high tidal periods and as a navigation facility (for water transportation). During the high tidal periods, water supply into secondary channels allows the farmer to collect water in ponds temporarily. The inflow of high tidal water into the channel allows soil water storage in shallow wells provided by a farmer for the irrigation water sources.



Figure 1. Primary and secondary channels at Telang Jaya Village.

The main soil physical characteristic related to irrigation planning is soil texture. Table 1 showed that soil texture at the root zone (0-30 cm) is clay loam. The higher the clay content, the higher the micropores were, resulting in a low water flow rate within the soil profile. On the other hand, high sand content will provide more micro pores resulting in a high water flow rate. This, in turn, impacts the operational irrigation system in the form of more frequent irrigation applications to crop. This condition is in line with Humphreys research [8], which showed that water content available within the soil profile of clay loam soil (0-1 m) was only 96 mm compared to 180 mm for water content available within clay soil covered with mulch. Therefore, soil with clay loam texture requires more frequent irrigation than that of clay soil. The increase of sand fraction will increase pore space volume so that water flow is faster. Therefore, soils with rough texture will require more water than soil with fine texture [9]

Table 1. Analysis results of soil texture at a depth of 0-30 cm

Parameter	Unit	Value
Tekstur		
• Sand	%	36.91
• Loam	%	32.25
• Clay	%	30.84
Textural Class		(clay loam)
C-organic	%	4.98
Saturated Water Content	%	50
Field Capacity Water Content	%	39
Permanent Wilting Point Water Content	%	23

Remark: Calculation of soil water retention was done by using the BUDGET computer model

The study area has wet rainfall potential based on yearly rainfall distribution with an annual rainfall magnitude of more than 4,000 mm. The long dry season occurred in 2015 and 2019. Rainfall at those years was relatively similar to a magnitude of 4,039 mm. Water deficit occurred at the dry season of June to October period, while relatively even rainfall occurred in 2016 and repeated in 2020. Yearly rainfall in 2016 achieved 5,498 mm (Figure 2). This condition will be used as a base for computer simulation of the BUDGET model, i.e., determining real-time irrigation water scheduling during dry conditions (using rainfall data of 2015) and during wet conditions (using rainfall data of 2016). Rainfall occurs relatively frequently if the previous year is a dry condition (2015). Rainfall day numbers in 2015 were 173 days compared to 248 days in 2016. Figure 3 showed that rainfall in 2016 was almost evenly distributed for each month, so that rainfall water volume is higher than that of 2015. The drought occurred again in 2019 (four-year time interval) with a yearly rainfall of only 4,038 mm, which was close to 4,039 mm in 2015. The number of rainfall days in 2019 was also deficient, with a magnitude of 143 days. If the previous year is a long dry season, then it is directly followed by wet conditions. This had happened in 2020 where rainfall conditions were more evenly distributed and farmers do not need to conduct irrigation effort this year.

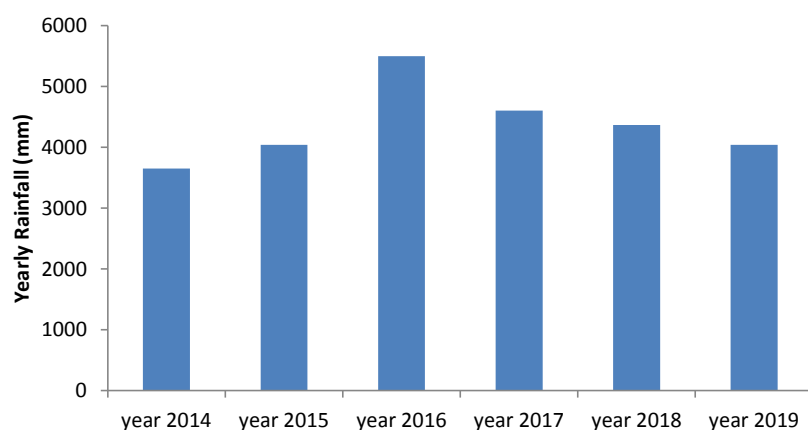


Figure 2. Yearly rainfall during five years period at the study area Data source: Processed from data of BMKG (2020)

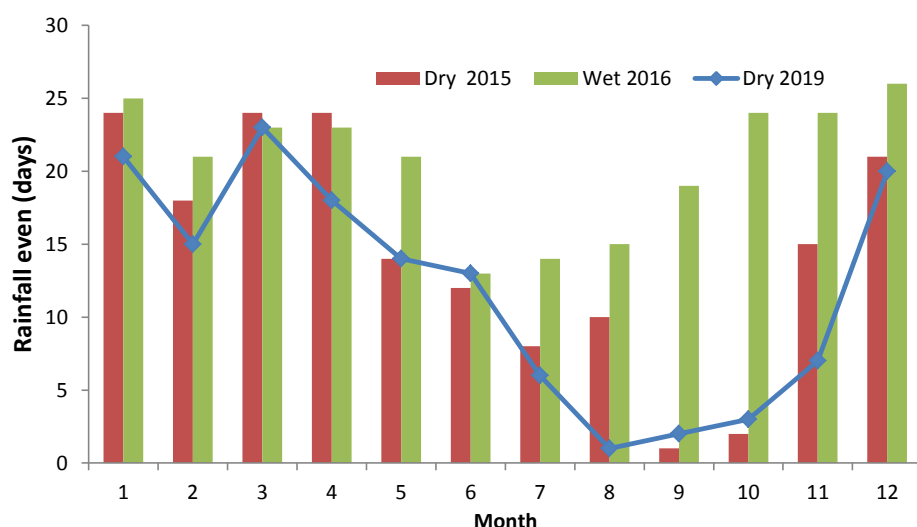


Figure 3. Distribution of rainfall days per month at dry and wet climatic conditions. Data source: Processed from data of BMKG (2020)

Yearly rainfall volume at climatic conditions in 2015 and 2019 were relatively similar, but monthly rainfall distribution was slightly different (Figure 4). Water deficit has occurred during four months in the 2015 year (July-October), and it is increased to 6 months in the 2019 year (June-November). This condition causes the South Sumatra area to experience extensive land fire disaster. Therefore, the water deficit period in the 2019 year was occurred from July up to November. In contrast, the water deficit period in 2016 has occurred only for two months (June-July) with a magnitude of less than -20-30 mm/month. This is in line which previous study which showed that water deficit calculation at Gorontalo area was found in August and September where rainfall was less than potential evapotranspiration (ETP) and water surplus was found in January up to July as well as October up to December where rainfall was higher than potential evapotranspiration (ETP) [10]

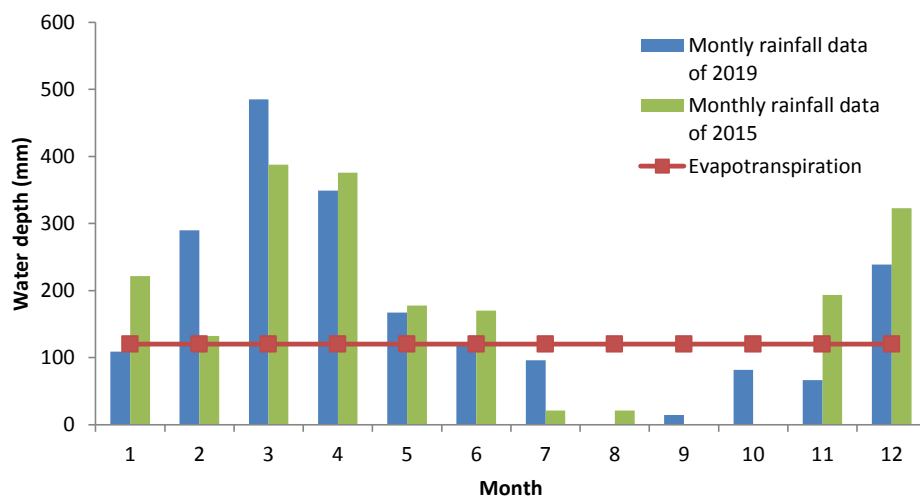


Figure 4. Relationship between monthly rainfall and crop evapotranspiration.

Comment [A3]: What is the annual rainfall for 2015 and 2019? Can indicate in Figure.

3.4. Analysis of Soil Capability to Store Water and Crop Water Requirement.

Soil solids have consisted of mineral materials and organic matter. Soil mineral is composed of sand, loam, and clay fractions. In addition to solids, soil also has pores space. The proportion of pores space within the soil is always filled with water or air. The pores space's volume is fixed at a specific depth, but it might be changed due to soil tillage or compaction. Water source within soil pores space originates from two sources, i.e., rainfall water or irrigation. The capability of the soil to store water is characterized by pores space magnitude. The soil at the study area has pores space of 50% at the upper layer (0-30 cm), which means that soil can store 50% of applied water from rainfall. If rainfall magnitude is 50 mm and root depth is 30 cm, then water stored by soil is $50/100 \times 300 \text{ mm} = 150 \text{ mm}$. It means that the first rainfall has not yet able to saturate the crop root zone.

Consumptive water requirement is affected by type and age of crop (crop growth stage). When the harvest starts to grow, the value of consumptive water requirement increases according to crop growth, and it will attain maximum value during the maximum vegetative growth period. After achieving maximum value, the value of the consumptive water requirement will decrease in line with seed maturation. The consumptive water requirement of the crop is affected by the crop factor or crop coefficient (kc).

In the calculation of crop water requirement for irrigation application purposes, the different values of crop coefficients (kc) are used which area is based on stages of crop growth. Crop growth is divided into four growth phases consisting of the initial phase, development phase, middle phase, and final phase. The initial phase is from the germination phase up to the crop's initial growth in which crop

closure is less than 10% of the planting area. The second phase is the crop development phase, which is started from the end of the initial phase until the crop is capable of covering soil 70-80% of the planting area. The third phase is the middle phase, i.e., after the crop capable of covering 80% of the soil surface up to begin to mature and enters flowering. The fourth phase is the final phase, where the crop is already mature and production which is ready to be harvested.

Reference crop evapotranspiration is affected by climatic conditions, and this can be calculated by using several methods. To determine the effect of crop characteristics on crop water requirement, then crop coefficient (kc) is a constant that relates ETo to ETc (crop evapotranspiration). The value of kc is related to crop evapotranspiration, which is free of disease, grows in an extensive area with optimum soil humidity and good soil fertility, as well as to attain full production potential at a specific growth environment.

Table 2. Crop coefficient under the different growing stage

Growth stage	Crop coefficient value
Initial growth (Week 1)	0.40
Growth (Vegetative), Week 1-3	0.75
Flowering (Generative), Week 3-4	1.10
Fruit formation, Week 5-9	1.00
Maturation, Week 10-1	0.90

Comment [A4]: Is this for tomato or any crops?

For safety reasons in fulfilling water requirement, irrigation application may use the highest value of crop coefficient with a magnitude of 1.10, especially at the third planting season (MT3) at tidal lowland in dry season condition. The evapotranspiration potential (ETo) values of the crop were in the range of 3.8 to 5.3 mm/day. At bright conditions without rainfall and maximum solar radiation, the ETo value was 5.5 mm/day. However, during October month due to smoke effect had caused a decrease in solar radiation so that ETo value was decreased in the range of 3.5 to 3.8 mm/day. If tomato crop growing requires a cultivation period of 60 days, then at least the required water was $(4.5 \text{ mm/day} \times 1.1 \times 60 \text{ day}) = 297 \text{ mm}$.

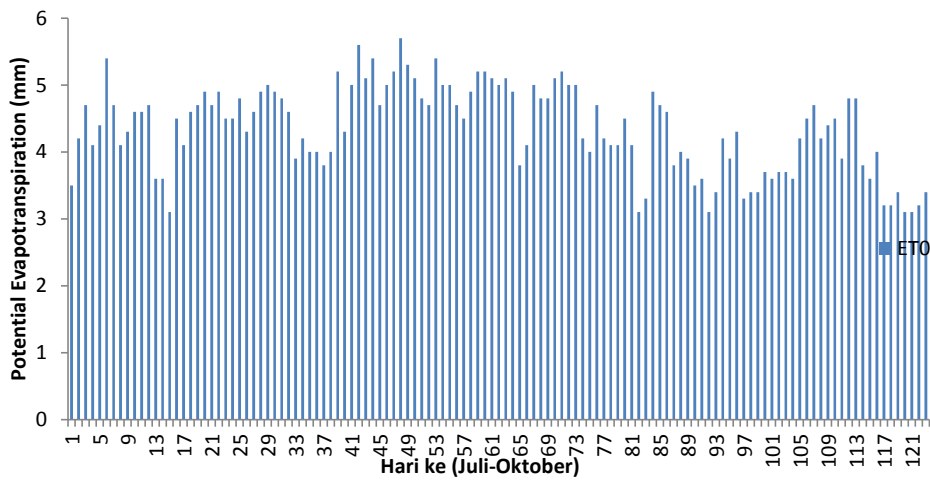


Figure 5. Daily dynamics of potential evapotranspiration values at Telang I area

Field research conducted by Jaya Negara et al. [11] showed that irrigation water requirement for tomato crops highly depends on crop growth phases. The fastest-growing cultivation period of tomato is 56 days. The phases for tomato crop growth are as follows: initial growth of 16 days, vegetative phase of 20 days, fruit formation phase until an initial harvest of 20 days. The average crop water requirement for a tomato at the initial phase was 3.5 mm/day, vegetative phase until fruit formation was 4.5 mm/day, and subsequently decrease prior to the harvest phase. Thus, the total water requirement for the crop in the field was about 266 mm. This value was not much different than the value obtained from a computer simulation.

3.5. Irrigation Water Scheduling for Tomato Crop at Tidal Lowland Area

The crop cultivation scenario was a dry climate condition in 2019 with deficient rainfall for the planting period of July to October. During the crop growing period, water balance in the land was in water deficit condition (-) in which monthly rainfall was much smaller than the evapotranspiration value. This condition requires the farmer to conduct irrigation. Consideration for crop cultivation at dry season was because the first and second planting seasons were still prioritized for rice crop and vegetable product prize at dry season is usually higher.

Irrigation scheduling has two main objectives: when and how much water should be applied to crop. Calculation of irrigation water requirement and irrigation water scheduling is usually based on three approaches: crop monitoring, soil water monitoring, and water balance analysis technique. Approaching a concept based on monitoring of crop growth condition and soil water monitoring

requires high cost and a long time so that analysis technique based on soil water balance within crop root zone is the leading choice—monthly rainfall distribution at dry climatic condition (Figure 6).

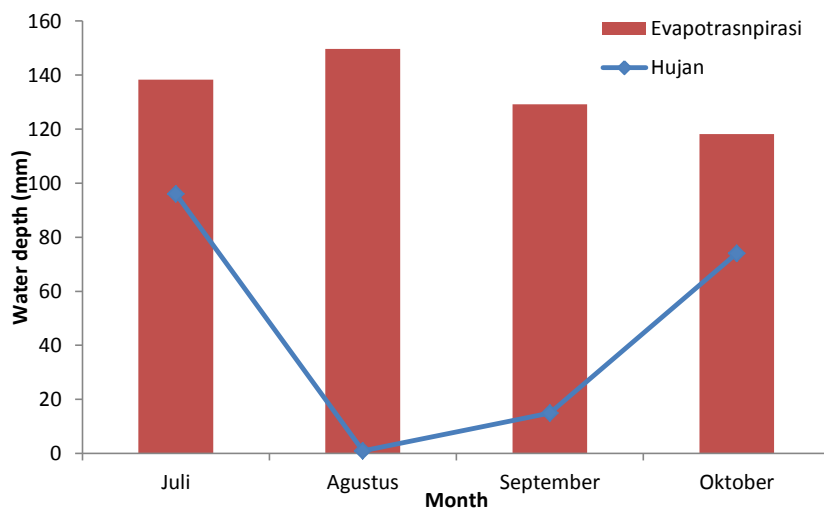


Figure 6. Monthly water balance at dry season condition in 2019

At the condition of an intense soil water surface (> 90 cm), capillary water's contribution is not sufficient to fulfill crop water requirement, so that irrigation is needed. Soil water dynamics during the end of the rainfall season period (April) and entering the dry season (July-August) can be seen in Figure 7. Therefore, computer simulation of the BUDGET model no longer enters soil water contribution as a water source.

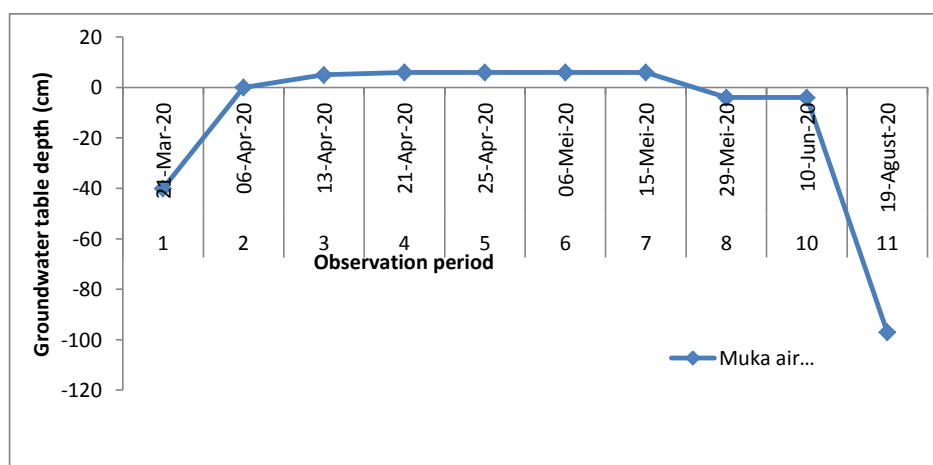


Figure 7. Soil water dynamics for the period of March to August 2020.

The planting period up to harvest was 90 days. Computer simulation results of the BUDGET model showed that there were ten times watering during the crop growth period with a total crop water requirement of 450-490 mm. More frequent watering was done at the initial growth period, i.e., once every 5-7 days, and watering was done once every ten days starting from the middle season up to the final period.

Comment [A5]: Is this not for tomato?

The computer simulation was perfect because it was supported by previous research [12], which showed that irrigation interval application for tomato crop at swampland was eight days and produced the best production with a magnitude of $1.280 \text{ kg.crop}^{-1}$ or equal to 28.4 ton.ha^{-1} .

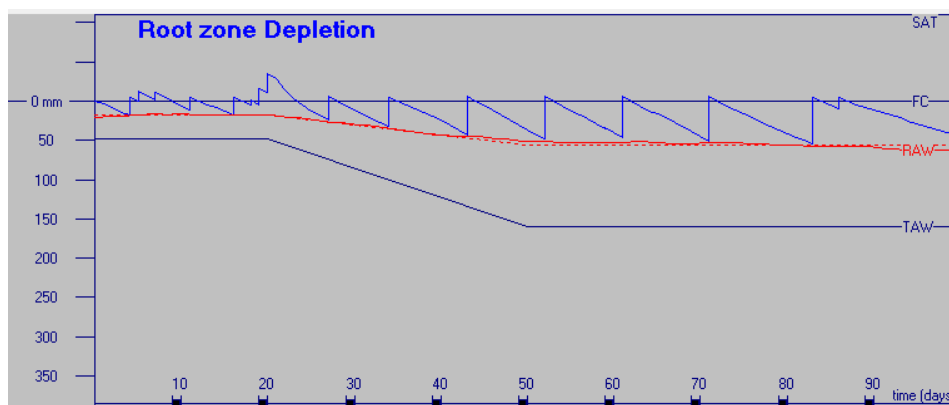


Figure 8. Irrigation water scheduling for tomato crop planted on 1 July 2019.

However, the dry season's watergate operation in the field was better conducted by using a close system to collect rainfall water. The tertiary channel should contain water at a minimum height of 80-100 cm or -30 cm from the embankment so that soil water in farmland was available at a depth of 30-40 cm. At a soil water depth of 20-40 cm, crop water requirement can still be supplied from the capillary water movement, and it is appropriate for vegetable crop growth such as tomato. The research for corn crops showed that the soil water surface drops up to 1 m depth, capillary water movement can only be supplied 41 % of the crop evapotranspiration requirement [13]. Field drilling at the dry season in August 2020 showed that soil water surface was already at a depth of 90 cm. This condition showed that food crop cultivation should be provided with additional water supply from surface irrigation.

The second simulation (Figure 9) was conducted at a relatively wet climatic condition using the daily rainfall data of the 2016 year. This year's total yearly rainfall was more than 4000 mm, and it was evenly distributed throughout the year. The dry season period in June-August 2016 showed that rainfall occurrence was in the range of 10 to 15 days. Planting was still done from the July period. The

simulation result showed that rainfall was sufficient to fulfill crop water requirements so that irrigation water was no longer needed in order to maintain soil moisture at field capacity conditions.

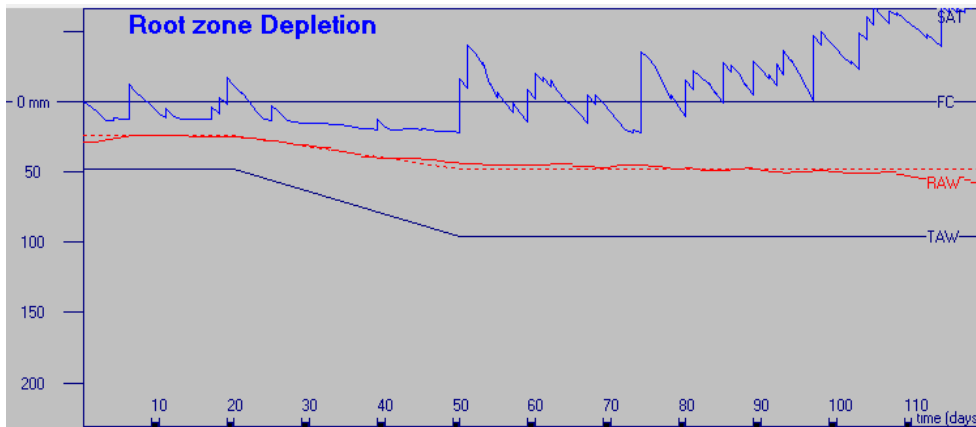


Figure 9. Condition of soil water status during the planting period of June

3.6. Irrigation Water Application in Field

Laboratory analysis results of soil texture in crop root zone showed that soil texture was clay loam. This soil has water retention characteristics as follows: saturated water content of 50%, field capacity water content of 39%, and permanent wilting point of 23%. Saturated water content represents the condition of total pore space. Therefore, the soil porosity value was also 50%. Soil capability to store water is 50%. Irrigation water scheduling shown in the BUDGET model was conducted to restore soil at field capacity. Still, farmers in the field conduct irrigation practice until saturated soil conditions (all pore space are filled with water). Irrigation usually was applied when readily available water was already run out. Simulation results showed that watering was conducted once a week (first month) at the initial growth period and once every ten days for the second and third months.

Irrigation water application within the root zone at a depth of 30 cm with a total porosity of 50% had produced water storage thickness of $50/100 \times 300 \text{ mm} = 150 \text{ mm}$. If the area of crop planting is 1 ha (10,000 m²), then the water volume that should be given was 1,500 m³.

The existing water resource utilizes high tidal water, which flows into a tertiary channel or rainfall water retention (Figure 10). Using open water gate operation, water in the tertiary channel only has a depth of 30-50 cm, which was insufficient for pump irrigation. But, if water gate operation was conducted by using high tidal water supply and rainfall water retention, then water in the tertiary channel had attained a depth of 110 cm, which is sufficient for pump irrigation. Pump irrigation application is the last choice when high tidal water cannot fulfill the farmland's water requirement.

Land in the study area is categorized as C flooding type where high tidal water cannot overflow the land. Therefore the water management objective is to harvest rainfall water and retaining water in the tertiary canal after tidewater. Water can only enter into the tertiary channel. Irrigation water supply can only be applied by pumping (Figure 11).



(a)

(b)

Figure 10. Tertiary channel condition (a) less water at the opened gate and (b) more water due to detention operation



Figure 11. Equipment for the pump irrigation system at tidal lowland area of Telang I

The farmer usually plants vegetable crops by using a dike system so that irrigation application was conducted using the furrow irrigation model (Figure 13). Water is pumped from the tertiary channel into a quarterly channel, or sub-tertiary channel, which will subsequently fill the trenches amongst crop dikes.



Figure 13. Vegetable crops in the field using the furrow irrigation system

4. Conclusion And Recommendation

Land use analysis showed that the study area had the potential for three times planting (PI 300) with a rice-rice-vegetable planting pattern. The cultivated vegetables usually were string bean, etc. Tomato plant cultivation needs to be socialized. The simulation result for the tomato crop showed that crop water requirement was in the range of 450 to 490 mm. Irrigation water scheduling at dry climate (2019) showed that irrigation intervals were once every week for one month and subsequently once every ten days. Meanwhile, simulation results for wet climatic conditions showed that irrigation was not required, and watergate operation was done using a retention system to maintain soil water surface at a depth of 30-40 cm.

Water resource at the tidal lowland area of Telang 1 was from rainfall water and high tidewater. High tide water at C-land typology could not enter into farmland, so that pump irrigation is required. Application of pump irrigation for 1 ha land requires an operational time of 5 hours with an average water discharge of 0.077 m³/s.

Comment [A6]: Where is this info come from? No discussion on this and not supported with relevant ref.

References

- [1] Imanudin, M.S., M. E. Armanto, Bakri. 2019. Determination of planting time of watermelon under a shallow Groundwater table in tidal lowland agriculture areas of South Sumatra, Indonesia. *Irrigation and Drainage Journal*, 68(3): 488-495.
- [2] Gue, Zhe & Qi, Zhiming & Burghate, Rasika & Yuan, Shouqi & Jiao, Xiyun & Xu, Junzeng. 2020. Irrigation Scheduling Approaches and Applications: A Review. *Journal of Irrigation and Drainage Engineering*. 146. 04020007-1~15. 10.1061/(ASCE)IR.1943-4774.0001464

- [3] Imanudin, M.S., Satria, J.P., Bakri., and M. Edi Armanto. 2020. Field Adaptation for Watermelon Cultivation under Shallow Ground Water Table in Tidal Lowland Reclamation Area. *Journal of Wetlands Environmental Management*, 8 (1): 1 – 10
- [4] Kadioglu, H. Harlene Hatterman-Valenti , Xinhua Jia, Xuefeng Chu, Hakan Aslan, and Halis Simsek, 2019 Groundwater Table Effects on the Yield, Growth, and Water Use of Canola (*Brassica napus* L.) Plant, *Water* (11): 1730
- [5] García, I.F , Sergio Lecina, M. Carmen Ruiz-Sánchez , Juan Vera. , Wenceslao Conejero., María R. Conesa , Alfonso Domínguez , José J. Pardo, Bruno C. Lélis, Pilar Montesinos, 2020. Trends and Challenges in Irrigation Scheduling in the Semi-Arid Area of Spain. *Water*, 12: 785
- [6] Raes, D. 2002. BUDGET model. A soil water and salt balance model. K.U.Leuven Faculty of Agricultural and Applied Biological Sciences Institute for Land and Water Management.
- [7] FAO, 2009. Irrigation and Drainage Paper No 56.: "Crop Evapotranspiration" ETo calculator downloaded <http://www.fao.org/land-water/databases-and-software/eto-calculator/en/>
- [8] Humphreys, E. & White, R. & Smith, David & Godwin, D., 2008. Evaluation of strategies for increasing irrigation water productivity of maize in southern New South Wales using the MaizeMan model. *Australian Journal of Experimental Agriculture - AUST J EXP AGR*. 48. 10.1071/EA06092.
- [9] Minasny B., Mc Bratney, A.B. 2018. Limited effect of organic matter on soil available water capacity. *European Journal of Soil Science*: 69, 39–47
- [10] Rahim, Y., Johannes E. X. Rogi Samuel and D. Runtuwu. 2015. Estimation of water deficit and surplus for development of corn crop (*Zea mays* L.) in Gorontalo District by Using Water Balance Simulation Model. *Journal of Agrosocioeconomics*. 11 (1), pp. 11 – 17
- [11] Jaya Negara, I.D.G., M. Bagus Budianto, Anid Supriyadi , Humairoh Saidah. 2020. Analysis of Crop Water Requirement Using Caoli Method for Tomato Crop with Drip Irrigation at Dry Land in West Lombok. *Ganec Swara*: 14(1); 419-425.
- [12] Maulana Sy. M. Idrus. 2010. Time Interval Effect of Water Application on Tomato Crop Production at Dry Land Condition of Lowland during Dry Season. *Journal of Applied Agricultural Research*. Vol.10 (3): pp. 207-212
- [13] Gao Zailin, Huo Zhongyi, Qu Xu, Xu Xu, Guanhua Huang, and Tammo S. Steenhuis, 2017. Modeling contribution of shallow groundwater to evapotranspiration and yield of maize in an arid area. *Scientific Report*. 7: 43122.

Real-Time Irrigation Scheduling for Dry Land Crop (Non-Paddy) based on Soil and Climate Characteristics of Tidal Lowland Area in South Sumatra

M S Imanudin¹, S J Priatna¹, B M B Prayitno¹, and C. Arif²

¹Department of Soil Science, Sriwijaya University, Indralaya South Sumatra, Indonesia 30138

²Department of Civil and Environmental Engineering, IPB University, Bogor, Indonesia 16680

E-mail: momonsodikimanudin@fp.unsri.ac.id

Abstract. Water requirements for evapotranspiration take place continuously while water sources from rainfall occur according to the season and are not evenly distributed. The research aims to determine the water requirement of plants based on soil and climate characteristics in the lowland area. The study was conducted at the Soil Physics Laboratory, Soil Department, Faculty of Agriculture, Sriwijaya University. Soil samples were taken in lowland areas at Tidal Lowland Reclamation in Telang I Banyuasin. Field research was conducted from March to November 2019. Climatic data were rainfall conditions below 2,500 mm/year and more than 2,500 mm/year. The BUDGET model was used for simulations to determine real-time irrigation scheduling. The indicator crop is tomatoes, with a scenario arranged at the dry season planting period. The results showed that in the condition of annual rainfall < 2,500 mm, farmers need more irrigation frequencies compared to rainfall > 2,500 mm. Irrigation is not required under normal climatic conditions. Farmers only need to maintain the groundwater table under 40 cm using gate operation in the tertiary canal. Rainfall was sufficient to fulfill crop evapotranspiration. However, the irrigation scheduling was done every week during the initial growing stage and every ten days in the vegetative up to generative stages in the dry climatic condition.

5. Introduction

The plant requires water for its growth and development. The plant continuously needs water, but water availability in terms of quantity, place, and time is not always available. This condition especially occurs during the dry season resulting in a decrease in farming enterprise. Irrigation effort is needed for sustainable agricultural cultivation.

Agricultural cultivation effort at tidal lowland area during the wet season is prioritized for rice crops. Therefore, the planting pattern consists of rice-rice. An effort to increase the planting index to 300 % is made by adding vegetable crops or second crops in the third planting season (MT3). The primary constraint at the MT3 period is water deficiency for crops [1]. Thus, a water management plan is required by considering water resource potential, water quality, and water application method. Water management strategy should include how much water to be applied, where it is applied, and priority during the dry season [2]. The capillary water movement is the main water source to fulfill crop evaporation requirement at wetland because water supply for crops can be fulfilled by capillary water movement from the groundwater table 40 cm below the soil surface [3]. Kadioglu et al. [4] had reported that the contribution of shallow groundwater table at loam soil within a depth of 30, 60, and 90 cm to supply crop water requirement was 97%, 71%, and 68%, respectively. Therefore, irrigation scheduling at the swamp area is closely related to groundwater table status in addition to rainfall.

Information related to water application consisting of applied water quantity and irrigation scheduling is essential for agricultural cultivation in the tidal lowland area in the third planting season or MT3 (June-September). In order to fully understand the irrigation scheduling concept, several processes related to water balance within the root zone must be understood. The governing components are evapotranspiration calculation, the input of soil water and rainfall, soil water content status, crop water requirement, and computer modeling [2, 5]. Irrigation scheduling and calculation of crop water requirements in this research are aided by using BUDGET software [6]. The required data input consisted of climatic data, rainfall, soil characteristics, and crop. The research objectives were to determine the quantity of crop water requirements, irrigation water scheduling, and field strategy related to water application into the crop. The indicator crop was tomato.

6. Methodology

2.2. Place and Time

This study was conducted by soil sample taking and observation of land use at Telang Jaya Village of the tidal lowland reclamation area in Banyuasin District from June to July 2020.

2.3. Material and Equipment

This study's materials and equipment consisted of the soil sample, climatic data, daily rainfall at dry and wet seasons, computer software of ETo, and the BUDGET model.

2.4. Method

This study consisted of two stages. The first stage was field activity of soil sampling at a depth of 0-30 cm and 30-60 cm layers for textural analysis in the laboratory. Soil water retention characteristics such as saturated water content, field capacity, and permanent wilting point can be predicted from this soil texture data. This data is important in the calculation of irrigation water scheduling simulation. Observation of field conditions was conducted to access land-use type and water resource potential for irrigation. The second stage was laboratory work, which consisted of soil textural analysis with the hydrometer and computer simulations. Calculation of crop water requirement (consumptive use) was conducted by calculating potential evapotranspiration which was affected by climatological factors. The calculation model for daily ETo was conducted by using the Penman-Monteith equation with the aid of a computer model of the ETo calculator [7]. Water requirement for the crop is ETo value multiplied by crop coefficient as follows:

$$ET_c = k_c \times ETo \quad [1]$$

Comment [A7]: Use Equation editor and give number

where:

ET_c = Crop evapotranspiration (mm d^{-1})

ETo = Reference evapotranspiration (mm d^{-1})

k_c = crop coefficient

Irrigation water scheduling is conducted by using the BUDGET computer model. The BUDGET calculates water content within soil profiles affected by water inflow and water outflow within a certain period. Soil profile generally consisted of several layers that have specific characteristics. At least information on soil texture should be available. The model calculates the change in daily water

content storage. The main data input for the model is daily rainfall data, potential evapotranspiration data (ET_o), crop data, which consisted of the crop coefficient for each growing stage.

Calculation of irrigation scheduling for tomato crops has consisted of two criteria, i.e., water quantity and water application period, that will be given through irrigation. This study's chosen scheduling criteria was a constant time interval with different water quantity applications based on soil water availability conditions or soil moisture. The soil will be irrigated again to fulfill the field capacity of the soil (pF 2.5). The best irrigation scheduling criteria are based on water availability within the soil, which provides the highest efficiency of the irrigation system. Soil should be immediately irrigated before it attains a permanent wilting point condition (pF 4.2). The criterion for the irrigation time used was a constant or fixed interval of 10 days. The selection of this interval period was adjusted to water requirement calculation and rainfall. Operational implementation of irrigation time will be easier to be applied by farmers according to the simulated schedule from the BUDGET software. Irrigation was done as an addition to the water supply to fulfill crop water requirements that could not be fulfilled by effective rainfall. Simulation results will show soil conditions with a lack of water that requires farmers to conduct irrigation (real-time irrigation scheduling).

7. Results and Discussion

3.1. General Description of Study Area

The field research was conducted at Telang Jaya Village, located at Jembatan II line number 8 (Primer 8), Muara Telang Sub-district. This location is one of the tidal lowland areas which is opened for the transmigration program in 1981. The main water source is from rainfall, and high tidal water only enters channels so that water in the channel only has a function to maintain groundwater table in the land is not quick drawdown.

Telang Jaya Village has four sub-villages and 22 heads of families. This village's distance to the Sub-district capital is 0.2 km, with a traveling time of 5 minutes. Agricultural land in this area is classified as C typology class (rainfed) covering about 960 ha. The previous model of water management network is based on a one-way flow system in which high tidal water enters through the primary channel and subsequently into a secondary provider channel in the form of a village irrigation channel (SPD), then into a tertiary provider channel, and finally, flow into farmland. During excessive water conditions (wet season), water from farmland outflow through the drainage tertiary channel and then into the main drainage channel (SDU) and subsequently into the primary channel. However, due to the topography effect and operational conducted by farmers, the flow has two directions. Water supply into the tertiary channel has come from SPD as well as SDU. During the low tide water period, water also flows into two directions, i.e., into SPD and SDU. These two ways, flow is capable of accelerating the leaching process.

Land ownership of farmers is 2 ha consisting of 1 ha Farm Land I (LU-1) and 1 ha Farm Land 2 (LU-2). Nowadays the land ownership had changed in which one farmer may have more than 2 ha of land. The planting pattern depends on land conditions, flooding type, water availability, and the existing drainage network facilities. There are two planting seasons, i.e., Planting Season 1 (MT1) consisting of rice cultivation from November to March and Planting Season 2 (MT2) from March to June. It is encouraged nowadays to have three times planting from June to September for horticultural crops or second crops. The tomato crop has high economic value, although its main constraint is lack of water in the dry season. There is no water supply from high tidal water irrigation, so that surface irrigation is needed.

An overview of the channel system can be seen in Figure 1. The primary channel is to convey water during high tidal periods and as a navigation facility (for water transportation). During the high tidal periods, water supply into secondary channels allows the farmer to collect water in ponds temporarily. The inflow of high tidal water into the channel allows soil water storage in shallow wells provided by a farmer for the irrigation water sources.



Figure 1. Primary and secondary channels at Telang Jaya Village.

The main soil physical characteristic related to irrigation planning is soil texture. Table 1 showed that soil texture at the root zone (0-30 cm) is clay loam. The higher the clay content, the higher the micropores were, resulting in a low water flow rate within the soil profile. On the other hand, high sand content will provide more micro pores resulting in a high water flow rate. This, in turn, impacts the operational irrigation system in the form of more frequent irrigation applications to crop. This condition is in line with Humphreys research [8], which showed that water content available within the soil profile of clay loam soil (0-1 m) was only 96 mm compared to 180 mm for water content available within clay soil covered with mulch. Therefore, soil with clay loam texture requires more frequent irrigation than that of clay soil. The increase of sand fraction will increase pore space volume so that water flow is faster. Therefore, soils with rough texture will require more water than soil with fine texture [9].

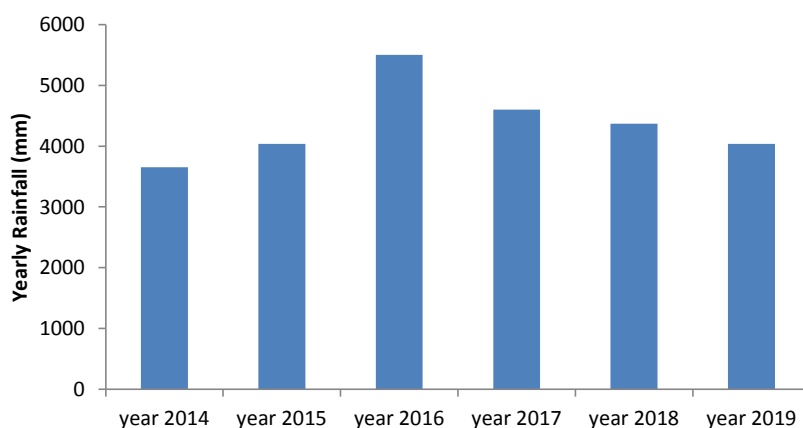
Table 1. Analysis results of soil texture at a depth of 0-30 cm

Parameter	Unit	Value
Texture		
• Sand	%	36.91
• Loam	%	32.25
• Clay	%	30.84

Textural Class		(clay loam)
C-organic	%	4.98
Saturated Water Content	%	50
Field Capacity Water Content	%	39
Permanent Wilting Point Water Content	%	23

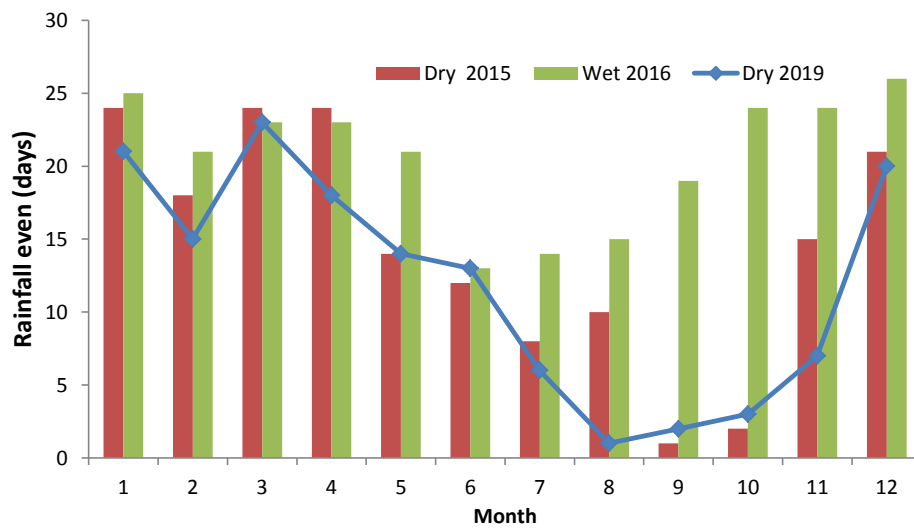
Remark: Calculation of soil water retention was done by using the BUDGET computer model

The study area has wet rainfall potential based on yearly rainfall distribution with an annual rainfall magnitude of more than 4,000 mm. The long dry season occurred in 2015 and 2019. Rainfall at those years was relatively similar to a magnitude of 4,039 mm. Water deficit occurred during the dry season of June to October period, while relatively even rainfall occurred in 2016 and repeated in 2020. Yearly rainfall in 2016 achieved 5,498 mm (Figure 2). This condition will be used as a base for computer simulation of the BUDGET model, i.e., determining real-time irrigation water scheduling during dry conditions (using rainfall data of 2015) and during wet conditions (using rainfall data of 2016). Rainfall occurs relatively frequently if the previous year is a dry condition (2015). Rainfall day numbers in 2015 were 173 days compared to 248 days in 2016. Figure 3 showed that rainfall in 2016 was almost evenly distributed for each month, so that rainfall water volume is higher than that of 2015. The drought occurred again in 2019 (four-year time interval) with a yearly rainfall of only 4,038 mm, which was close to 4,039 mm in 2015. The number of rainfall days in 2019 was also deficient, with a magnitude of 143 days. If the previous year is a long dry season, then it is directly followed by wet conditions. This had happened in 2020 where rainfall conditions were more evenly distributed and farmers do not need to conduct irrigation effort this year.



Data source: Processed from data of BMKG (2020)

Figure 2. Yearly rainfall during five years period at the study area



Data source: Processed from data of BMKG (2020)

Figure 3. Distribution of rainfall days per month at dry and wet climatic conditions.

Yearly rainfall volume at climatic conditions in 2015 and 2019 was relatively similar, but monthly rainfall distribution was slightly different (Figure 4). Water deficit has occurred for four months in the 2015 year (July-October), and it is increased to 6 months in the 2019 year (June-November). This condition causes the South Sumatra area to experience extensive land fire disaster. Therefore, the water deficit period in the 2019 year was occurred from July up to November. In contrast, the water deficit period in 2016 has occurred only for two months (June-July) with a magnitude of less than -20-30 mm/month. This is in line which a previous study which showed that water deficit calculation at Gorontalo area was found in August and September where rainfall was less than potential evapotranspiration (ETP) and water surplus was found in January up to July as well as October up to December where rainfall was higher than potential evapotranspiration (ETP) [10]

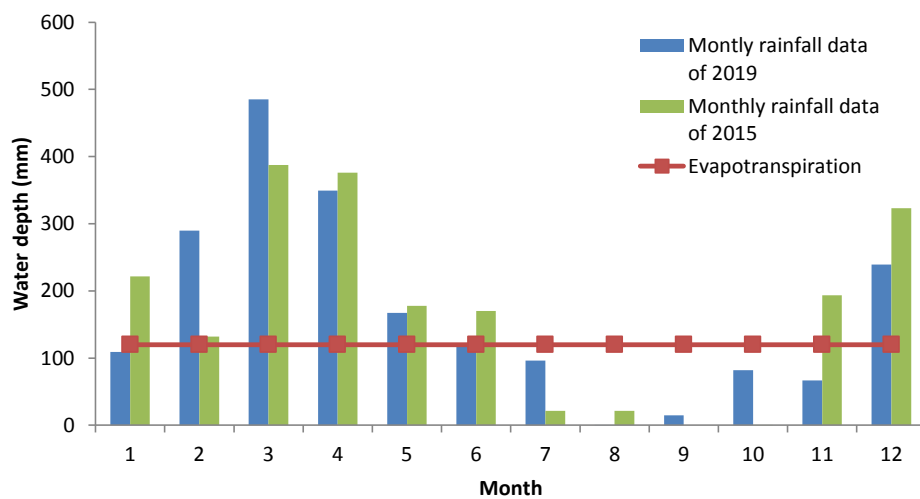


Figure 4. Relationship between monthly rainfall and crop evapotranspiration.

3.2. Analysis of Soil Capability to Store Water and Crop Water Requirement.

Soil solids have consisted of mineral materials and organic matter. Soil mineral is composed of sand, loam, and clay fractions. In addition to solids, soil also has pores space. The proportion of pores space within the soil is always filled with water or air. The pores space's volume is fixed at a specific depth, but it might be changed due to soil tillage or compaction. Water source within soil pores space originates from two sources, i.e., rainfall water or irrigation. The capability of the soil to store water is characterized by pores space magnitude. The soil at the study area has pores space of 50% at the upper layer (0-30 cm), which means that soil can store 50% of applied water from rainfall. If rainfall magnitude is 50 mm and root depth is 30 cm, then water stored by soil is $50/100 \times 300 \text{ mm} = 150 \text{ mm}$. It means that the first rainfall has not yet able to saturate the crop root zone.

Consumptive water requirement is affected by type and age of crop (crop growth stage). When the harvest starts to grow, the value of consumptive water requirement increases according to crop growth, and it will attain maximum value during the maximum vegetative growth period. After achieving maximum value, the value of the consumptive water requirement will decrease in line with seed maturation. The consumptive water requirement of the crop is affected by the crop factor or crop coefficient (k_c).

In the calculation of crop water requirement for irrigation application purposes, the different values of crop coefficients (k_c) are used which area is based on stages of crop growth. Crop growth is divided into four growth phases consisting of the initial phase, development phase, middle phase, and final phase. The initial phase is from the germination phase up to the crop's initial growth in which crop closure is less than 10% of the planting area. The second phase is the crop development phase, which is started from the end of the initial phase until the crop is capable of covering soil 70-80% of the planting area. The third phase is the middle phase, i.e., after the crop capable of covering 80% of the soil surface up to begin to mature and enters flowering. The fourth phase is the final phase, where the crop is already mature and production which is ready to be harvested.

Reference crop evapotranspiration is affected by climatic conditions, and this can be calculated by using several methods. To determine the effect of crop characteristics on crop water requirement, then crop coefficient (kc) is a constant that relates ETo to ETc (crop evapotranspiration). The value of kc is related to crop evapotranspiration, which is free of disease, grows in an extensive area with optimum soil humidity and good soil fertility, as well as to attain full production potential at a specific growth environment.

Table 2. Crop coefficient under the different growing stage

Growth stages	Crop coefficient
Initial growth (Week 1)	0.40
Growth (Vegetative), Week 1-3	0.75
Flowering (Generative), Week 3-4	1.10
Fruit formation, Week 5-9	1.00
Maturation, Week 10-1	0.90

For safety reasons in fulfilling water requirement, irrigation application may use the highest value of crop coefficient with a magnitude of 1.10, especially at the third planting season (MT3) at tidal lowland in dry season condition. The evapotranspiration potential (ETo) values of the crop were in the range of 3.8 to 5.3 mm/day. At bright conditions without rainfall and maximum solar radiation, the ETo value was 5.5 mm/day. However, during October month due to smoke effect had caused a decrease in solar radiation so that ETo value was decreased in the range of 3.5 to 3.8 mm/day. If tomato crop growing requires a cultivation period of 60 days, then at least the required water was $(4.5 \text{ mm/day} \times 1.1 \times 60 \text{ day}) = 297 \text{ mm}$.

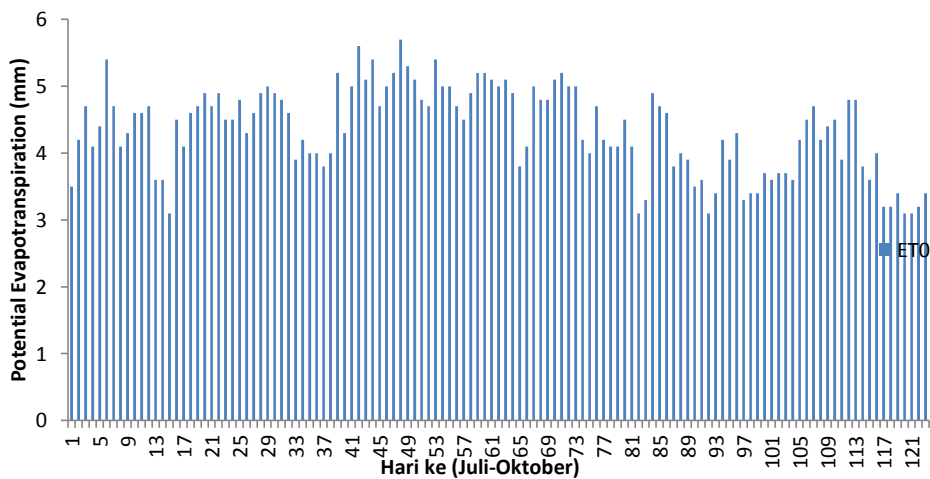


Figure 5. Daily dynamics of potential evapotranspiration values at Telang I area

Field research conducted by Jaya Negara et al. [11] showed that irrigation water requirement for tomato crops highly depends on crop growth phases. The fastest-growing cultivation period of tomato is 56 days. The phases for tomato crop growth are as follows: initial growth of 16 days, vegetative phase of 20 days, fruit formation phase until an initial harvest of 20 days. The average crop water requirement for a tomato at the initial phase was 3.5 mm/day, vegetative phase until fruit formation was 4.5 mm/day, and subsequently decrease prior to the harvest phase. Thus, the total water requirement for the crop in the field was about 266 mm. This value was not much different than the value obtained from a computer simulation.

3.3. Irrigation Water Scheduling for Tomato Crop at Tidal Lowland Area

The crop cultivation scenario was a dry climate condition in 2019 with deficient rainfall for the planting period of July to October. During the crop growing period, water balance in the land was in water deficit condition (-) in which monthly rainfall was much smaller than the evapotranspiration value. This condition requires the farmer to conduct irrigation. Consideration for crop cultivation at dry season was because the first and second planting seasons were still prioritized for rice crop and vegetable product prize at dry season is usually higher.

Irrigation scheduling has two main objectives: when and how much water should be applied to crop. Calculation of irrigation water requirement and irrigation water scheduling is usually based on three approaches: crop monitoring, soil water monitoring, and water balance analysis technique. Approaching a concept based on monitoring of crop growth condition and soil water monitoring requires high cost and a long time so that analysis technique based on soil water balance within crop root zone is the leading choice—monthly rainfall distribution at dry climatic condition (Figure 6).

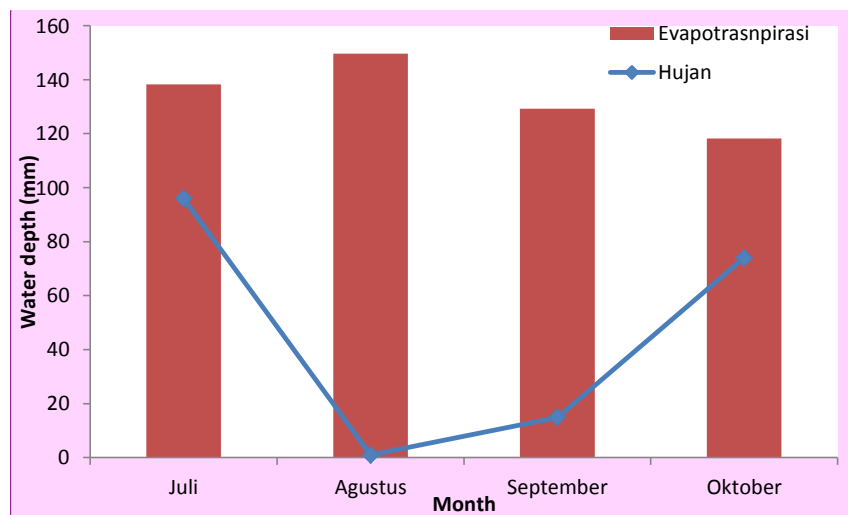
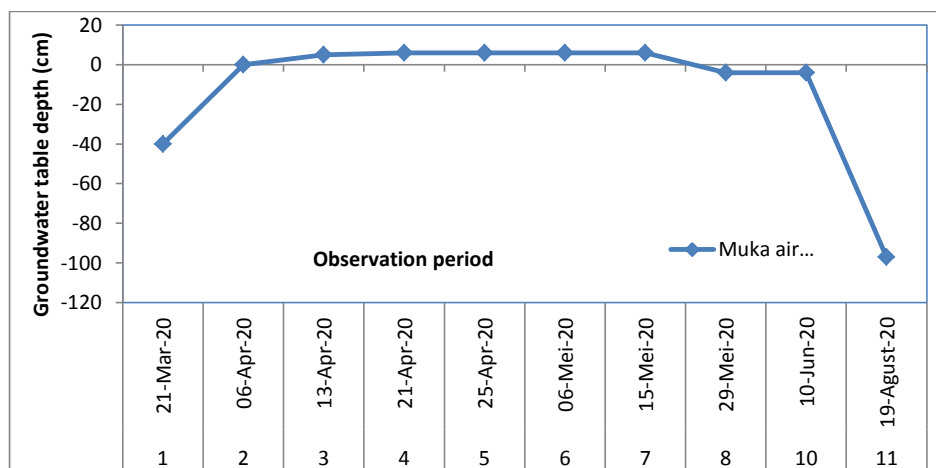


Figure 6. Monthly water balance at dry season condition in 2019

At the condition of an intense soil water surface (> 90 cm), capillary water's contribution is not sufficient to fulfill crop water requirement, so that irrigation is needed. Soil water dynamics during the end of the rainfall season period (April) and entering the dry season (July-August) can be seen in

Comment [A8]: In English

Figure 7. Therefore, computer simulation of the BUDGET model no longer enters soil water contribution as a water source.



Comment [A9]: In English

Figure 7. Soil water dynamics for the period of March to August 2020.

The planting period up to harvest was 90 days. Computer simulation results of the BUDGET model showed that there were ten times watering during the crop growth period with a total crop water requirement of 450-490 mm. More frequent watering was done at the initial growth period, i.e., once every 5-7 days, and watering was done once every ten days starting from the middle season up to the final period.

The computer simulation was perfect because it was supported by previous research [12], which showed that irrigation interval application for tomato crop at swampland was eight days and produced the best production with a magnitude of 1.280 kg.crop⁻¹ or equal to 28.4 ton.ha⁻¹.

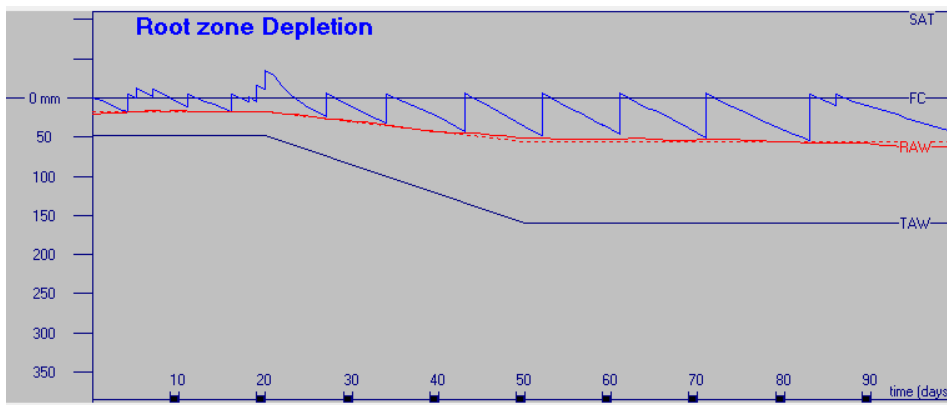


Figure 8. Irrigation water scheduling for tomato crop planted on 1 July 2019.

However, the dry season's watergate operation in the field was better conducted by using a close system to collect rainfall water. The tertiary channel should contain water at a minimum height of 80-100 cm or -30 cm from the embankment so that soil water in farmland was available at a depth of 30-40 cm. At a soil water depth of 20-40 cm, crop water requirement can still be supplied from the capillary water movement, and it is appropriate for vegetable crop growth such as tomato. The research for corn crops showed that the soil water surface drops up to 1 m depth, capillary water movement can only be supplied 41 % of the crop evapotranspiration requirement [13]. Field drilling at the dry season in August 2020 showed that soil water surface was already at a depth of 90 cm. This condition showed that food crop cultivation should be provided with additional water supply from surface irrigation.

The second simulation (Figure 9) was conducted at a relatively wet climatic condition using the daily rainfall data of the 2016 year. This year's total yearly rainfall was more than 4000 mm, and it was evenly distributed throughout the year. The dry season period in June-August 2016 showed that rainfall occurrence was in the range of 10 to 15 days. Planting was still done from the July period. The simulation result showed that rainfall was sufficient to fulfill crop water requirements so that irrigation water was no longer needed in order to maintain soil moisture at field capacity conditions.

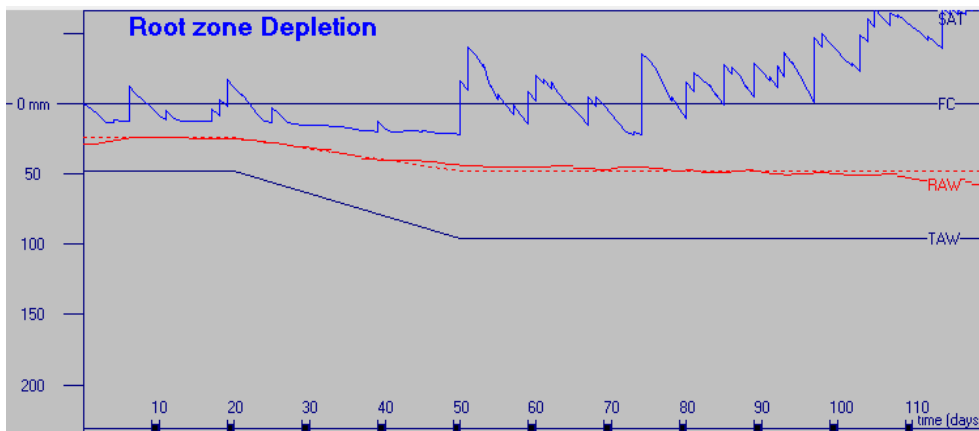


Figure 9. Condition of soil water status during the planting period of June

3.6. Irrigation Water Application in Field

Laboratory analysis results of soil texture in crop root zone showed that soil texture was clay loam. This soil has water retention characteristics as follows: saturated water content of 50%, field capacity water content of 39%, and permanent wilting point of 23%. Saturated water content represents the condition of total pore space. Therefore, the soil porosity value was also 50%. Soil capability to store water is 50%. Irrigation water scheduling shown in the BUDGET model was conducted to restore soil at field capacity. Still, farmers in the field conduct irrigation practice until saturated soil conditions (all pore space are filled with water). Irrigation usually was applied when readily available water was already run out. Simulation results showed that watering was conducted once a week (first month) at the initial growth period and once every ten days for the second and third months.

Irrigation water application within the root zone at a depth of 30 cm with total porosity of 50% had produced water storage thickness of $50/100 \times 300 \text{ mm} = 150 \text{ mm}$. If the area of crop planting is 1 ha ($10,000 \text{ m}^2$), then the water volume that should be given was $1,500 \text{ m}^3$.

The existing water resource utilizes high tidal water, which flows into a tertiary channel or rainfall water retention (Figure 10). Using open water gate operation, water in the tertiary channel only has a depth of 30-50 cm, which was insufficient for pump irrigation. But, if water gate operation was conducted by using high tidal water supply and rainfall water retention, then water in the tertiary channel had attained a depth of 110 cm, which is sufficient for pump irrigation. Pump irrigation application is the last choice when high tidal water cannot fulfill the farmland's water requirement. Land in the study area is categorized as C flooding type where high tidal water cannot overflow the land. Therefore the water management objective is to harvest rainfall water and retaining water in the tertiary canal after tidewater. Water can only enter into the tertiary channel. Irrigation water supply can only be applied by pumping (Figure 11).



(a)

(b)

Figure 10. Tertiary channel condition (a) less water at the opened gate and (b) more water due to detention operation



Figure 11. Equipment for the pump irrigation system at tidal lowland area of Telang I

The farmer usually plants vegetable crops by using a dike system so that irrigation application was conducted using the furrow irrigation model (Figure 13). Water is pumped from the tertiary channel into a quarterly channel, or sub-tertiary channel, which will subsequently fill the trenches amongst crop dikes.



Figure 13. Vegetable crops in the field using the furrow irrigation system

8. Conclusion And Recommendation

Land use analysis showed that the study area had the potential for three times planting (PI 300) with a rice-rice-vegetable planting pattern. The cultivated vegetables usually were string bean, etc. Tomato plant cultivation needs to be socialized. The simulation result for the tomato crop showed that crop water requirement was in the range of 450 to 490 mm. Irrigation water scheduling at dry climate (2019) showed that irrigation intervals were once every week for one month and subsequently once every ten days. Meanwhile, simulation results for wet climatic conditions showed that irrigation was not required, and watergate operation was done using a retention system to maintain soil water surface at a depth of 30-40 cm. Water resource at the tidal lowland area of Telang 1 was from rainfall water and high tide water. High tide water at C-land typology could not enter into farmland, so that pump irrigation is required. Application of pump irrigation for 1 ha land requires an operational time of 5 hours with an average water discharge of $0.077 \text{ m}^3/\text{s}$.

References

- [1] Imanudin, M.S., M. E. Armanto, Bakri. 2019. Determination of planting time of watermelon under a shallow Groundwater table in tidal lowland agriculture areas of South Sumatra, Indonesia. *Irrigation and Drainage Journal*, 68(3): 488-495.
- [2] Gue, Zhe & Qi, Zhiming & Burghate, Rasika & Yuan, Shouqi & Jiao, Xiyun & Xu, Junzeng. 2020. Irrigation Scheduling Approaches and Applications: A Review. *Journal of Irrigation and Drainage Engineering*. 146. 04020007-1~15. 10.1061/(ASCE)IR.1943-4774.0001464
- [3] Imanudin, M.S., Satria, J.P., Bakri., and M. Edi Armanto. 2020. Field Adaptation for Watermelon Cultivation under Shallow Ground Water Table in Tidal Lowland Reclamation Area. *Journal of Wetlands Environmental Management*, 8 (1): 1 – 10
- [4] Kadioglu, H. Harlene Hatterman-Valenti, Xinhua Jia, Xuefeng Chu, Hakan Aslan, and Halis Simsek, 2019 Groundwater Table Effects on the Yield, Growth, and Water Use of Canola (*Brassica napus* L.) Plant, *Water* (11): 1730
- [5] García, I.F, Sergio Lecina, M. Carmen Ruiz-Sánchez, Juan Vera. , Wenceslao Conejero., María R. Conesa, Alfonso Domínguez, José J. Pardo, Bruno C. Léllis, Pilar Montesinos, 2020. Trends and Challenges in Irrigation Scheduling in the Semi-Arid Area of Spain. *Water*, 12: 785
- [6] Raes, D. 2002. BUDGET model. A soil water and salt balance model. K.U.Leuven Faculty of Agricultural and Applied Biological Sciences Institute for Land and Water Management.
- [7] FAO, 2009. Irrigation and Drainage Paper No 56: "Crop Evapotranspiration" ETo calculator downloaded <http://www.fao.org/land-water/databases-and-software/eto-calculator/en/>
- [8] Humphreys, E. & White, R. & Smith, David & Godwin, D., 2008. Evaluation of strategies for increasing irrigation water productivity of maize in southern New South Wales using the MaizeMan model. *Australian Journal of Experimental Agriculture - AUST J EXP AGR*. 48. 10.1071/EA06092.
- [9] Minasny B., Mc Bratney, A.B. 2018. Limited effect of organic matter on soil available water capacity. *European Journal of Soil Science*: 69, 39–47

- [10] Rahim, Y., Johannes E. X. Rogi Samuel and D. Runtuwu. 2015. Estimation of water deficit and surplus for development of corn crop (*Zea mays* L.) in Gorontalo District by Using Water Balance Simulation Model. *Journal of Agrosocioeconomics*. 11 (1), pp. 11 – 17
- [11] Jaya Negara, I.D.G., M. Bagus Budianto, Anid Supriyadi, Humairoh Saidah. 2020. Analysis of Crop Water Requirement Using Caoli Method for Tomato Crop with Drip Irrigation at Dry Land in West Lombok. *Ganec Swara*: 14(1); 419-425.
- [12] Maulana Sy. M. Idrus. 2010. Time Interval Effect of Water Application on Tomato Crop Production at Dry Land Condition of Lowland during Dry Season. *Journal of Applied Agricultural Research*. Vol.10 (3): pp. 207-212
- [13] Gao Zailin, Huo Zhongyi, Qu Xu, Guanhua Huang, and Tammo S. Steenhuis, 2017. Modeling contribution of shallow groundwater to evapotranspiration and yield of maize in an arid area. *Scientific Report*. 7: 43122.

PENYERAHAN MAKALAH PERBAIKAN

2 NOVEMBER 2020

Real-Time Irrigation Scheduling for Upland Crop based on Soil and Climate Characteristics of Tidal Lowland Area in South Sumatra

M S Imanudin¹, S J Priatna¹, B M B Prayitno¹, and C. Arif²

¹Department of Soil Science, Sriwijaya University, Indralaya South Sumatra, Indonesia 30138

²Department of Civil and Environmental Engineering, IPB University, Bogor, Indonesia 16680

E-mail: momonsodikimanudin@fp.unsri.ac.id

Abstract. Water requirements for evapotranspiration take place continuously while water sources from rainfall occur according to the season and are not evenly distributed. The research aims to determine the water requirement of plants based on soil and climate characteristics in the lowland area of South Sumatra. The study was conducted at the Soil Physics Laboratory, Soil Department, Faculty of Agriculture, Sriwijaya University. Soil samples were taken from lowland areas at Tidal Lowland Reclamation in Telang I Banyuasin. Field research was conducted from March to November 2019. Climatic data were differentiated into rainfall conditions below 2,500 mm/year and more than 2,500 mm/year. The BUDGET model was used for simulations to determine real-time irrigation scheduling. The indicator crop is tomatoes, with a scenario arranged at the dry season planting period. The results showed that in the condition of annual rainfall < 2,500 mm, farmers need more irrigation frequencies compared to rainfall > 2,500 mm. Irrigation is not required under normal climatic conditions. Farmers only need to maintain the groundwater table under 40 cm using gate operation in the tertiary canal. Rainfall was sufficient to fulfill crop evapotranspiration. However, the irrigation scheduling was done every week during the initial growing stage and every ten days in the vegetative up to generative stages in the dry climatic condition.

9. Introduction

The plant requires water for its growth and development. The plant continuously needs water, but water availability in terms of quantity, place, and time is not always available. This condition especially occurs during the dry season resulting in a decrease in farming enterprise. Irrigation effort is needed to maintain soil moisture in order to meet crop evapotranspiration. Therefore farmer can carry out the cultivation of crop during dry season.

Agricultural cultivation effort at tidal lowland reclamation area during the wet season is prioritized for rice crops. Therefore, the planting pattern consists of rice-rice. An effort to increase the planting index to 300 % is made by adding vegetable crops or second crops in the third planting season (MT3). The primary constraint at the MT3 period is water deficiency for crops [1]. Thus, a water management plan is required by considering water resource potential, water quality, and water application method.

Water management strategy should include how much water to be applied, where it is applied, and priority during the dry season [2]. The capillary water movement is the main water source to fulfill crop evaporation requirement at wetland because water supply for crops can be fulfilled by capillary water movement from the groundwater table 40 cm below the soil surface [3]. Kadioglu et al. [4] had reported that the contribution of shallow groundwater table at loam soil within a depth of 30, 60, and 90 cm to supply crop water requirement was 97%, 71%, and 68%, respectively. Therefore, irrigation scheduling at the swamp area is closely related to groundwater table status in addition to rainfall.

Information related to water application consisting of applied water quantity and irrigation scheduling is essential for agricultural cultivation in the tidal lowland area in the third planting season or MT3 (June-September). In order to fully understand the irrigation scheduling concept, several processes related to water balance within the root zone must be understood. The governing components are evapotranspiration calculation, the input of soil water and rainfall, soil water content status, crop water requirement, and computer modeling [2, 5]. Irrigation scheduling and calculation of crop water requirements in this research are aided by using BUDGET software [6]. The required data input consisted of climatic data, rainfall, soil characteristics, and crop. The research objectives were to determine the quantity of crop water requirements, irrigation water scheduling, and field strategy related to water application into the crop. The indicator crop was tomato.

10. Methodology

2.5. Place and Time

This study was conducted by soil sample taking and observation of land use at Telang Jaya Village of the tidal lowland reclamation area in Banyuasin District from June to July 2020. The land typology is C type which the tide water could not entry to the land (tertiary block).

2.6. Material and Equipment

This study's materials and equipment consisted of the soil sample, climatic data, daily rainfall at dry and wet seasons, computer software of ETo, and the BUDGET model.

2.7. Method

This study consisted of two stages. The first stage was field activity of soil sampling at a depth of 0-30 cm and 30-60 cm layers for textural analysis in the laboratory. Soil water retention characteristics such as saturated water content, field capacity, and permanent wilting point can be predicted from this soil texture data. This data is important in the calculation of irrigation water scheduling simulation. Observation of field conditions was conducted to access land-use type and water resource potential for irrigation.

The second stage was laboratory work, which consisted of soil textural analysis with the hydrometer and computer simulations. Calculation of crop water requirement (consumptive use) was conducted by calculating potential evapotranspiration which was affected by climatological factors. The calculation model for daily ETo was conducted by using the Penman-Monteith equation with the aid of a computer model of the ETo calculator [7]. Water requirement for the crop is ETo value multiplied by crop coefficient as follows:

$$\text{(crop water requirement) } ET_c = k_c \times ETo \quad [1]$$

where:

ET_c = Crop evapotranspiration (mm d^{-1})

ET_o = Reference evapotranspiration (mm d^{-1})

k_c = crop coefficient

Irrigation water scheduling is conducted by using the BUDGET computer model. The BUDGET calculates water content within soil profiles affected by water inflow and water outflow within a certain period. Soil profile generally consisted of several layers that have specific characteristics. At least information on soil texture should be available. The model calculates the change in daily water content storage. The main data input for the model is daily rainfall data, potential evapotranspiration data (ET_o), crop data, which consisted of the crop coefficient for each growing stage.

Calculation of irrigation scheduling for tomato crops has consisted of two criteria, i.e., water quantity and water application period, that will be given through irrigation. This study's chosen scheduling criteria was a constant time interval with different water quantity applications based on soil water availability conditions or soil moisture. The soil will be irrigated again to fulfill the field capacity of the soil (pF 2.5). The best irrigation scheduling criteria are based on water availability within the soil, which provides the highest efficiency of the irrigation system. Soil should be immediately irrigated before it attains a permanent wilting point condition (pF 4.2). The criterion for the irrigation time used was a constant or fixed interval of 10 days. The selection of this interval period was adjusted to water requirement calculation and rainfall. Operational implementation of irrigation time will be easier to be applied by farmers according to the simulated schedule from the BUDGET software. Irrigation was done as an addition to the water supply to fulfill crop water requirements that could not be fulfilled by effective rainfall. Simulation results will show soil conditions with a lack of water that requires farmers to conduct irrigation (real-time irrigation scheduling).

11. Results and Discussion

3.1. General Description of Study Area

The field research was conducted at Telang Jaya Village, located at Jembatan II line number 8 (Primer 8), Muara Telang Sub-district. This location is one of the tidal lowland areas which is opened for the transmigration program in 1981. The main water source is from rainfall, and high tidal water only enters channels so that water in the channel only has a function to maintain groundwater table in the land is not quick drawdown.

Telang Jaya Village has four sub-villages and 22 heads of families. This village's distance to the Sub-district capital is 0.2 km, with a traveling time of 5 minutes. Agricultural land in this area is classified as C typology class (rainfed) covering about 960 ha. The previous model of water management network is based on a one-way flow system in which high tidal water enters through the primary channel and subsequently into a secondary provider channel in the form of a village irrigation channel (SPD), then into a tertiary provider channel, and finally, flow into farmland. During excessive water conditions (wet season), water from farmland outflow through the drainage tertiary channel and then into the main drainage channel (SDU) and subsequently into the primary channel. However, due to the topography effect and operational conducted by farmers, the flow has two directions. Water

supply into the tertiary channel has come from SPD as well as SDU. During the low tide water period, water also flows into two directions, i.e., into SPD and SDU. These two ways, flow water is capable of accelerating the leaching process and more sufficient suplay water during high tide.

Land ownership of farmers is 2 ha consisting of 1 ha Farm Land I (LU-1) and 1 ha Farm Land 2 (LU-2). Nowadays the land ownership had changed in which one farmer may have more than 2 ha of land. The planting pattern depends on land conditions, flooding type, water availability, and the existing drainage network facilities. There are two planting seasons, i.e., Planting Season 1 (MT1) consisting of rice cultivation from November to March and Planting Season 2 (MT2) from March to June. It is encouraged nowadays to have three times planting from June to September for horticultural crops or second crops. The tomato crop has high economic value, although its main constraint is lack of water in the dry season. There is no water supply from high tidal water irrigation, so that surface irrigation is needed.

An overview of the channel system can be seen in Figure 1. The primary channel is to convey water during high tidal periods and as a navigation facility (for water transportation). During the high tidal periods, water supply into secondary channels allows the farmer to collect water in ponds temporarily. The inflow of high tidal water into the channel allows soil water storage in shallow wells provided by a farmer for the irrigation water sources.

Figure 1. Primary and secondary channels at Telang Jaya Village.

The main soil physical characteristic related to irrigation planning is soil texture. Table 1 showed that soil texture at the root zone (0-30 cm) is clay loam. The higher the clay content, the higher the micropores were, resulting in a low water flow rate within the soil profile. On the other hand, high

sand content will provide more micro pores resulting in a high water flow rate. This, in turn, impacts the operational irrigation system in the form of more frequent irrigation applications to crop. This condition is in line with Humphreys research [8], which showed that water content available within the soil profile of clay loam soil (0-1 m) was only 96 mm compared to 180 mm for water content available within clay soil covered with mulch. Therefore, soil with clay loam texture requires more frequent irrigation than that of clay soil. The increase of sand fraction will increase pore space volume so that water flow is faster. Therefore, soils with rough texture will require more water than soil with fine texture [9].

Table 1. Analysis results of soil texture at a depth of 0-30 cm

Parameter	Unit	Value
Texture		
• Sand	%	36.91
• Loam	%	32.25
• Clay	%	30.84
Textural Class		(clay loam)
C-organic	%	4.98
Saturated Water Content	%	50
Field Capacity Water Content	%	39
Permanent Wilting Point Water Content	%	23

Remark: Calculation of soil water retention was done by using the BUDGET computer model

The study area has wet rainfall potential based on yearly rainfall distribution with an annual rainfall magnitude of more than 4,000 mm. The long dry season occurred in 2015 and 2019. Rainfall at those years was relatively similar to a magnitude of 4,039 mm. Water deficit occurred during the dry season of June to October period, while relatively even rainfall occurred in 2016 and repeated in 2020. Yearly rainfall in 2016 achieved 5,498 mm (Figure 2). This condition will be used as a base for computer simulation of the BUDGET model, i.e., determining real-time irrigation water scheduling during dry conditions (using rainfall data of 2015) and during wet conditions (using rainfall data of 2016). Rainfall occurs relatively frequently if the previous year is a dry condition (2015). Rainfall day numbers in 2105 were 173 days compared to 248 days in 2016. Figure 3 showed that rainfall in 2016 was almost evenly distributed for each month, so that rainfall water volume is higher than that of 2015. The drought occurred again in 2019 (four-year time interval) with a yearly rainfall of only 4,038 mm, which was close to 4,039 mm in 2015. The number of rainfall days in 2019 was also deficient, with a magnitude of 143 days. If the previous year is a long dry season, then it is directly followed by wet conditions. This had happened in 2020 where rainfall conditions were more evenly distributed and farmers do not need to conduct irrigation effort this year.

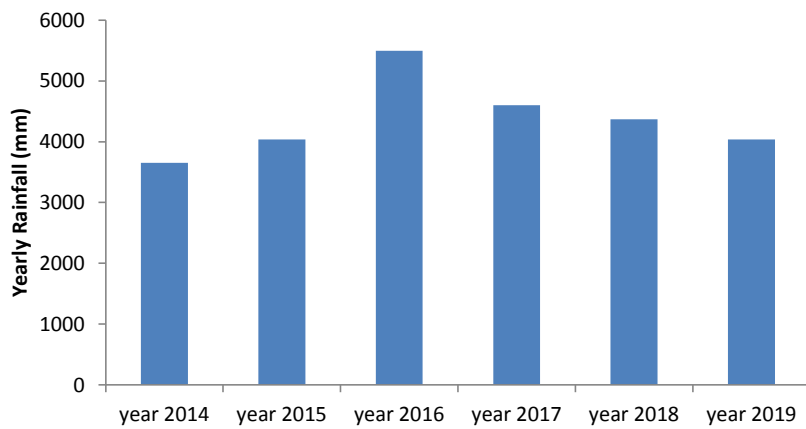


Figure 2. Yearly rainfall during five years period at the study area

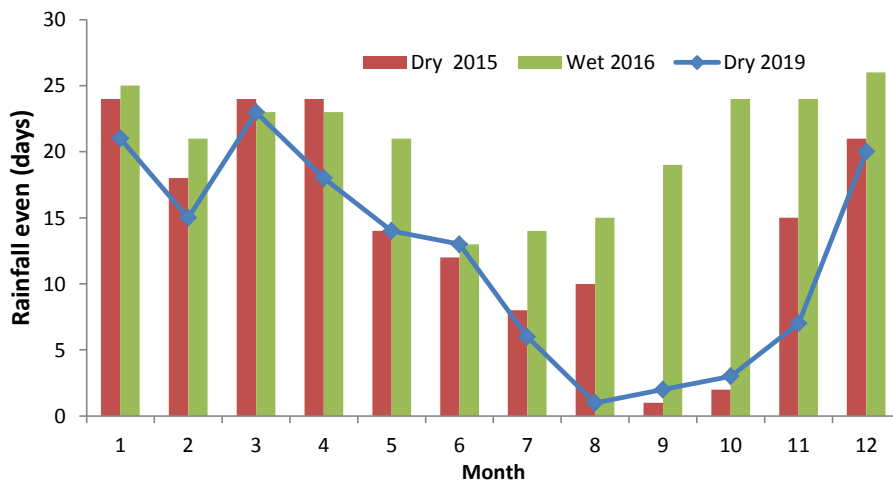


Figure 3. Distribution of rainfall days per month at dry and wet climatic conditions.

Yearly rainfall volume at climatic conditions in 2015 and 2019 was relatively similar, but monthly rainfall distribution was slightly different (Figure 4). Water deficit has occurred for four months in the 2015 year (July-October), and it is increased to 6 months in the 2019 year (June-November). This condition causes the South Sumatra area to experience extensive land fire disaster. Therefore, the water deficit period in the 2019 year was occurred from July up to November. In contrast, the water deficit period in 2016 has occurred only for two months (June-July) with a magnitude of less than -20-30 mm/month. This is in line which a previous study which showed that water deficit calculation at Gorontalo area was found in August and September where rainfall was less than potential

evapotranspiration (ETP) and water surplus was found in January up to July as well as October up to December where rainfall was higher than potential evapotranspiration (ETP) [10]

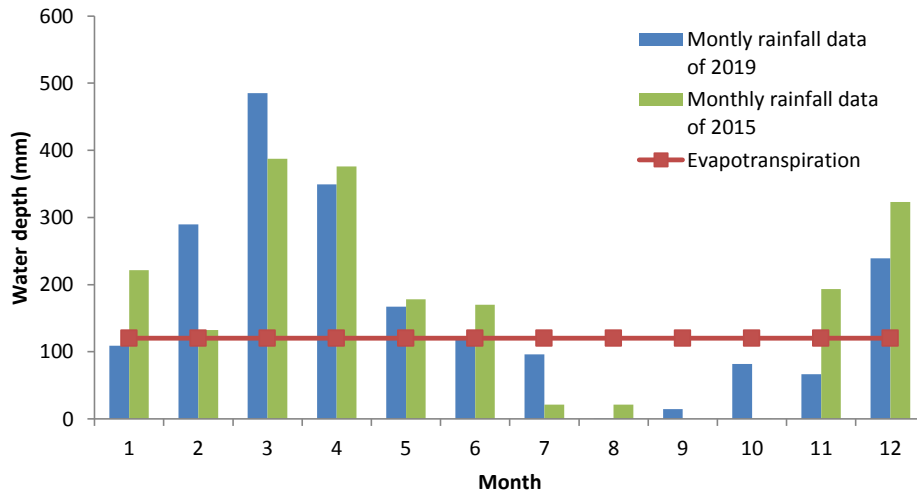


Figure 4. Relationship between monthly rainfall during dry and wet climatic condition with crop evapotranspiration.

3.2. Analysis of Soil Capability to Store Water and Crop Water Requirement.

Soil solids have consisted of mineral materials and organic matter. Soil mineral is composed of sand, loam, and clay fractions. In addition to solids, soil also has pores space. The proportion of pores space within the soil is always filled with water or air. The pores space's volume is fixed at a specific depth, but it might be changed due to soil tillage or compaction. Water source within soil pores space originates from two sources, i.e., rainfall water or irrigation. The capability of the soil to store water is characterized by pores space magnitude. The soil at the study area has pores space of 50% at the upper layer (0-30 cm), which means that soil can store 50% of applied water from rainfall. If rainfall magnitude is 50 mm and root depth is 30 cm, then water stored by soil is $50/100 \times 300 \text{ mm} = 150 \text{ mm}$. It means that the first rainfall has not yet able to saturate the crop root zone.

Consumptive water requirement is affected by type and age of crop (crop growth stage). When the harvest starts to grow, the value of consumptive water requirement increases according to crop growth, and it will attain maximum value during the maximum vegetative growth period. After achieving maximum value, the value of the consumptive water requirement will decrease in line with seed maturation. The consumptive water requirement of the crop is affected by the crop factor or crop coefficient (kc).

In the calculation of crop water requirement for irrigation application purposes, the different values of crop coefficients (k_c) are used which are based on stages of crop growth. Table 2 showed the value of crop coefficient (k_c) of tomato for different growing stages. Crop growth is divided into four growth phases consisting of the initial phase, development phase, middle phase, and final phase. The initial phase is from the germination phase up to the crop's initial growth in which crop closure is less than 10% of the planting area. The second phase is the crop development phase, which is started from the end of the initial phase until the crop is capable of covering soil 70-80% of the planting area. The third phase is the middle phase, i.e., after the crop is capable of covering 80% of the soil surface up to begin to mature and enters flowering. The fourth phase is the final phase, where the crop is already mature and production which is ready to be harvested.

Reference crop evapotranspiration is affected by climatic conditions, and this can be calculated by using several methods. To determine the effect of crop characteristics on crop water requirement, then crop coefficient (k_c) is a constant that relates ET_o to ET_c (crop evapotranspiration). The value of k_c is related to crop evapotranspiration, which is free of disease, grows in an extensive area with optimum soil humidity and good soil fertility, as well as to attain full production potential at a specific growth environment.

Table 2. Crop coefficient of tomato under the different growing stages

Growth stages	Crop coefficient
Initial growth (I) 30 days	0.60
Vegetative Growth (II) 40 days	0.75
Generative stage (III) 45 days	1.15
Fruit formation (IV), 30 days	0.80

Source: FAO (2009)

For safety reasons in fulfilling water requirement, irrigation application may use the highest value of crop coefficient with a magnitude of 1.10, especially at the third planting season (MT3) at tidal lowland in dry season condition. The evapotranspiration potential (ET_o) values of the crop were in the range of 3.8 to 5.3 mm/day. At bright conditions without rainfall and maximum solar radiation, the ET_o value was 5.5 mm/day. However, during October month due to smoke effect had caused a decrease in solar radiation so that ET_o value was decreased in the range of 3.5 to 3.8 mm/day. If tomato crop growing requires a cultivation period of 60 days, then at least the required water was $(4.5 \text{ mm/day} \times 1.1 \times 60 \text{ day}) = 297 \text{ mm}$.

Field research conducted by Jaya Negara et al. [11] showed that irrigation water requirement for tomato crops highly depends on crop growth phases. The fastest-growing cultivation period of tomato is 56 days. The phases for tomato crop growth are as follows: initial growth of 16 days, vegetative phase of 20 days, fruit formation phase until an initial harvest of 20 days. The average crop water requirement for a tomato at the initial phase was 3.5 mm/day, vegetative phase until fruit formation was 4.5 mm/day, and subsequently decrease prior to the harvest phase. Thus, the total water requirement for the crop in the field was about 266 mm. This value was not much different than the value obtained from a computer simulation.

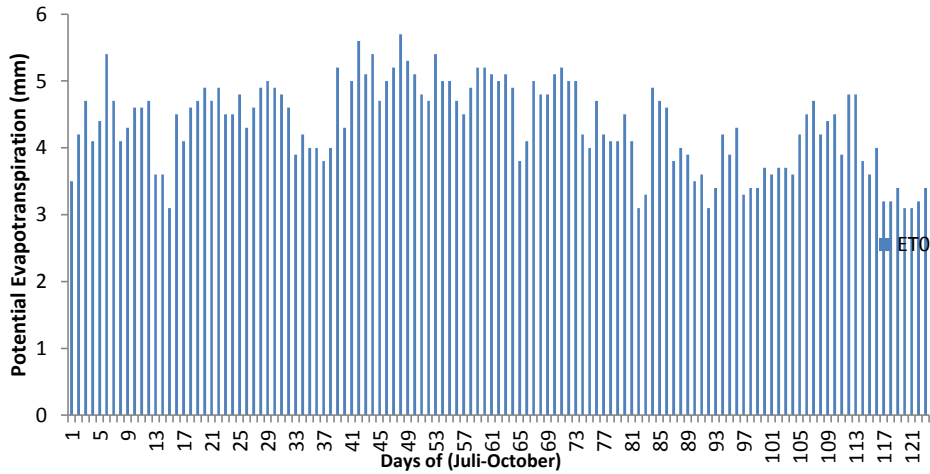


Figure 5. Daily dynamics of potential evapotranspiration values at Telang I area

3.3. Irrigation Water Scheduling for Tomato Crop at Tidal Lowland Area

The crop cultivation scenario was a dry climate condition in 2019 with deficient rainfall for the planting period of July to October. During the crop growing period, water balance in the land was in water deficit condition (-) in which monthly rainfall was much smaller than the evapotranspiration value. This condition requires the farmer to conduct irrigation. Consideration for crop cultivation at dry season was because the first and second planting seasons were still prioritized for rice crop and vegetable product prize at dry season is usually higher.

Irrigation scheduling has two main objectives: when and how much water should be applied to crop. Calculation of irrigation water requirement and irrigation water scheduling is usually based on three approaches: crop monitoring, soil water monitoring, and water balance analysis technique. Approaching a concept based on monitoring of crop growth condition and soil water monitoring requires high cost and a long time so that analysis technique based on soil water balance within crop root zone is the leading choice—monthly rainfall distribution at dry climatic condition (Figure 6).

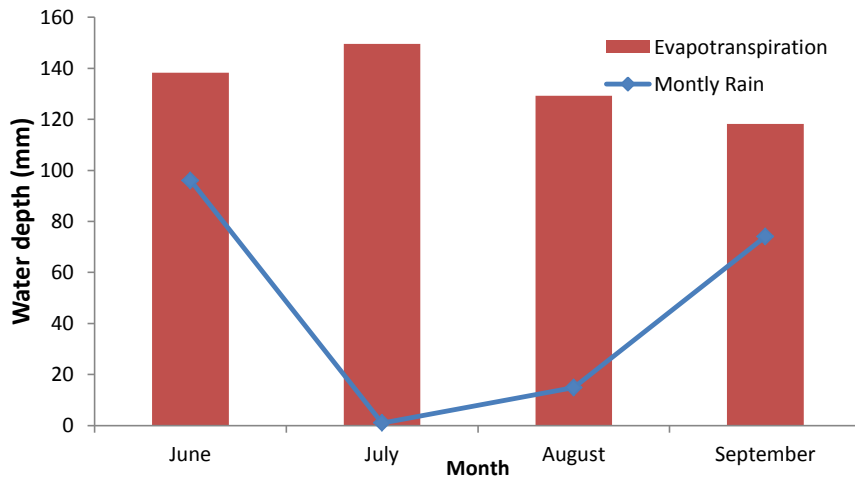


Figure 6. Monthly water balance at dry season condition in 2019

At the condition of an intense soil water surface (> 90 cm), capillary water's contribution is not sufficient to fulfill crop water requirement, so that irrigation is needed. Soil water dynamics during the end of the rainfall season period (April) and entering the dry season (July-August) can be seen in Figure 7. Therefore, computer simulation of the BUDGET model no longer enters soil water contribution as a water source.

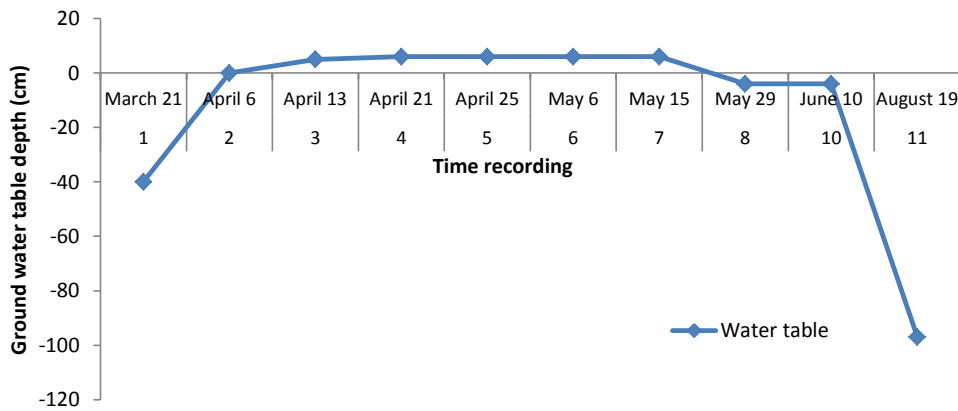


Figure 7. Soil water dynamics for the period of March to August 2020.

The planting period up to harvest was 145 days. Computer simulation results of the BUDGET model showed that there were ten times watering during the crop growth period with a total crop water requirement of 450-490 mm. More frequent watering was done at the initial growth period, i.e., once every 5-7 days, and watering was done once every ten days starting from the middle season up to the final period.

The computer simulation was perfect because it was supported by previous research [12], which showed that irrigation interval application for tomato crop at swampland was eight days and produced the best production with a magnitude of $1.280 \text{ kg.crop}^{-1}$ or equal to 28.4 ton.ha^{-1} .

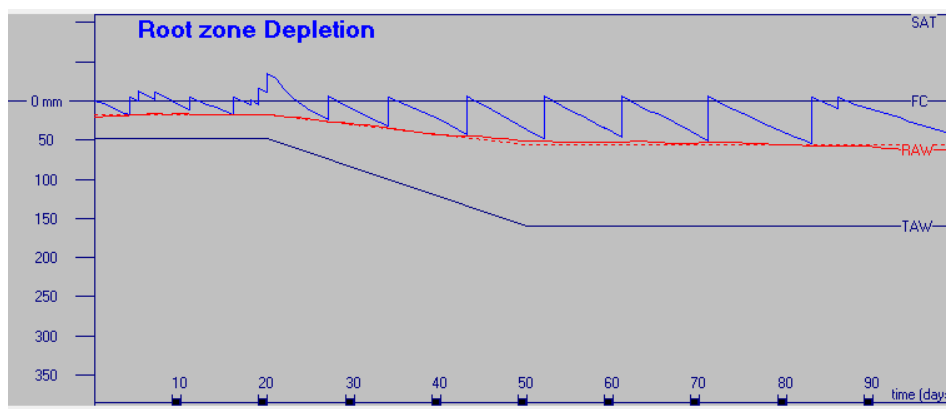


Figure 8. Irrigation water scheduling for tomato crop planted on 1 July 2019.

However, the dry season's watergate operation in the field was better conducted by using a close system to collect rainfall water. The tertiary channel should contain water at a minimum height of 80-100 cm or -30 cm from the embankment so that soil water in farmland was available at a depth of 30-40 cm. At a soil water depth of 20-40 cm, crop water requirement can still be supplied from the capillary water movement, and it is appropriate for vegetable crop growth such as tomato. The research for corn crops showed that the soil water surface drops up to 1 m depth, capillary water movement can only be supplied 41 % of the crop evapotranspiration requirement [13]. Field drilling at the dry season in August 2020 showed that soil water surface was already at a depth of 90 cm. This condition showed that food crop cultivation should be provided with additional water supply from surface irrigation.

The second simulation (Figure 9) was conducted at a relatively wet climatic condition using the daily rainfall data of the 2016 year. This year's total yearly rainfall was more than 4000 mm, and it was evenly distributed throughout the year. The dry season period in June-August 2016 showed that rainfall occurrence was in the range of 10 to 15 days. Planting was still done from the July period. The simulation result showed that rainfall was sufficient to fulfill crop water requirements so that irrigation water was no longer needed in order to maintain soil moisture at field capacity conditions.

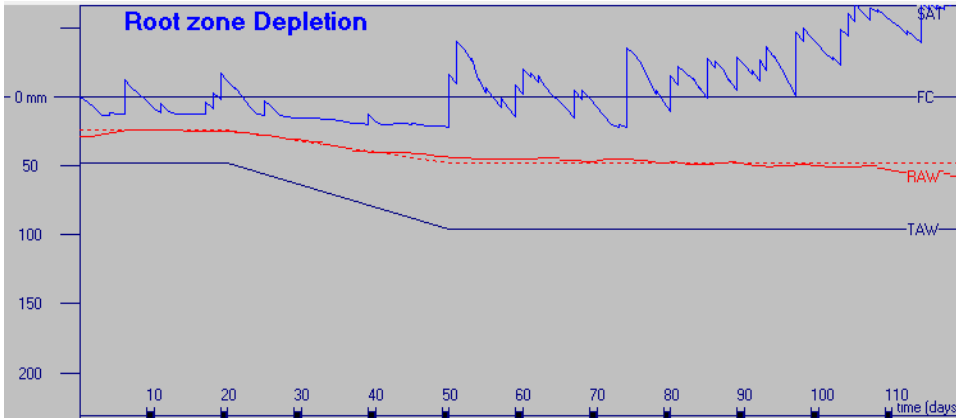


Figure 9. Condition of soil water status during the planting period of June

3.6. Irrigation Water Application in Field

Laboratory analysis results of soil texture in crop root zone showed that soil texture was clay loam. This soil has water retention characteristics as follows: saturated water content of 50%, field capacity water content of 39%, and permanent wilting point of 23%. Saturated water content represents the condition of total pore space. Therefore, the soil porosity value was also 50%. Soil capability to store water is 50%. Irrigation water scheduling shown in the BUDGET model was conducted to restore soil at field capacity. Still, farmers in the field conduct irrigation practice until saturated soil conditions (all pore space are filled with water). Irrigation usually was applied when readily available water was already run out. Simulation results showed that watering was conducted once a week (first month) at the initial growth period and once every ten days for the second and third months.

Irrigation water application within the root zone at a depth of 30 cm with total porosity of 50% had produced water storage thickness of $50/100 \times 300 \text{ mm} = 150 \text{ mm}$. If the area of crop planting is 1 ha ($10,000 \text{ m}^2$), then the water volume that should be given was $1,500 \text{ m}^3$. The existing water resource utilizes high tidal water, which flows into a tertiary channel or rainfall water retention (Figure 10). Using open water gate operation, water in the tertiary channel only has a depth of 30-50 cm, which was insufficient for pump irrigation. But, if water gate operation was conducted by using high tidal water supply and rainfall water retention, then water in the tertiary channel had attained a depth of 110 cm, which is sufficient for pump irrigation.



(a)

(b)

Figure 10. Tertiary channel condition (a) less water at the opened gate and (b) more water due to detention operation

Pump irrigation application is the last choice when high tidal water cannot fulfill the farmland's water requirement. Land in the study area is categorized as C flooding type where high tidal water cannot overflow the land. Therefore the water management objective is to harvest rainfall water and retaining water in the tertiary canal after tidewater. Water can only enter into the tertiary channel. Irrigation water supply can only be applied by pumping (Figure 11).



Figure 11. Equipment for the pump irrigation system at tidal lowland area of Telang I

The farmer usually plants vegetable crops by using a dike system so that irrigation application was conducted using the furrow irrigation model (Figure 13). Water is pumped from the tertiary channel

into a quarterly channel, or sub-tertiary channel, which will subsequently fill the trenches amongst crop dikes.



Figure 13. Vegetable crops in the field using the furrow irrigation system

12. Conclusion And Recommendation

Land use analysis showed that the study area had the potential for three times planting (PI 300) with a rice-rice-vegetable planting pattern. The cultivated vegetables usually were string bean, etc. Tomato plant cultivation needs to be socialized. The simulation result for the tomato crop showed that crop water requirement was in the range of 450 to 490 mm. Irrigation water scheduling at dry climate (2019) showed that irrigation intervals were once every week for one month and subsequently once every ten days. Meanwhile, simulation results for wet climatic conditions showed that irrigation was not required, and watergate operation was done using a retention system to maintain soil water surface at a depth of 30-40 cm.

The irrigation strategy to achieve crop evapotranspiration during dry period in tidal lowland is to retain water in tertiary canal and rainfall harvesting method. Irrigation water supply to field area (tertiary block) should be done by the pump irrigation system.

Water resource at the tidal lowland area of Telang 1 was from rainfall water and high tidewater. High tide water at C-land typology could not enter into farmland, so that pump irrigation is required. Application of pump irrigation for 1 ha land requires an operational time of 5 hours with an average water discharge of $0.077 \text{ m}^3/\text{s}$.

References

- [1] Imanudin, M.S., M. E. Armanto, Bakri. 2019. Determination of planting time of watermelon under a shallow Groundwater table in tidal lowland agriculture areas of South Sumatra, Indonesia. *Irrigation and Drainage Journal*, 68(3): 488-495.
- [2] Gue, Zhe & Qi, Zhiming & Burghate, Rasika & Yuan, Shouqi & Jiao, Xiyun & Xu, Junzeng. 2020. Irrigation Scheduling Approaches and Applications: A Review. *Journal of Irrigation and Drainage Engineering*. 146. 04020007-1~15. 10.1061/(ASCE)IR.1943-4774.0001464
- [3] Imanudin, M.S., Satria, J.P., Bakri., and M. Edi Armanto. 2020. Field Adaptation for Watermelon Cultivation under Shallow Ground Water Table in Tidal Lowland Reclamation Area. *Journal of Wetlands Environmental Management*, 8 (1): 1 – 10
- [4] Kadioglu, H. Harlene Hatterman-Valenti, Xinhua Jia, Xuefeng Chu, Hakan Aslan, and Halis Simsek, 2019 Groundwater Table Effects on the Yield, Growth, and Water Use of Canola (*Brassica napus* L.) Plant, *Water* (11): 1730
- [5] García, I.F, Sergio Lecina, M. Carmen Ruiz-Sánchez, Juan Vera. , Wenceslao Conejero., María R. Conesa, Alfonso Domínguez, José J. Pardo, Bruno C. Lélis, Pilar Montesinos, 2020. Trends and Challenges in Irrigation Scheduling in the Semi-Arid Area of Spain. *Water*, 12: 785
- [6] Raes, D. 2002. BUDGET model. A soil water and salt balance model. K.U.Leuven Faculty of Agricultural and Applied Biological Sciences Institute for Land and Water Management.
- [7] FAO, 2009. *Irrigation and Drainage Paper No 56: "Crop Evapotranspiration" ETo calculator* downloaded <http://www.fao.org/land-water/databases-and-software/eto-calculator/en/>
- [8] Humphreys, E. & White, R. & Smith, David & Godwin, D., 2008. Evaluation of strategies for increasing irrigation water productivity of maize in southern New South Wales using the MaizeMan model. *Australian Journal of Experimental Agriculture - AUST J EXP AGR*. 48. 10.1071/EA06092.
- [9] Minasny B., Mc Bratney, A.B. 2018. Limited effect of organic matter on soil available water capacity. *European Journal of Soil Science*: 69, 39–47
- [10] Rahim, Y., Johannes E. X. Rogi Samuel and D. Runtuwu. 2015. Estimation of water deficit and surplus for development of corn crop (*Zea mays* L.) in Gorontalo District by Using Water Balance Simulation Model. *Journal of Agrosocioeconomics*. 11 (1), pp. 11 – 17
- [11] Jaya Negara, I.D.G., M. Bagus Budianto, Anid Supriyadi, Humairoh Saidah. 2020. Analysis of Crop Water Requirement Using Caoli Method for Tomato Crop with Drip Irrigation at Dry Land in West Lombok. *Ganec Swara*: 14(1); 419-425.
- [12] Maulana Sy. M. Idrus. 2010. Time Interval Effect of Water Application on Tomato Crop Production at Dry Land Condition of Lowland during Dry Season. *Journal of Applied Agricultural Research*. Vol.10 (3): pp. 207-212
- [13] [Gao Zailin](#), [Huo Zhongyi](#), [Qu Xu](#), [Guanhua Huang](#), and [Tammo S. Steenhuis](#), 2017. Modeling contribution of shallow groundwater to evapotranspiration and yield of maize in an arid area. [Scientific Repo](#)

Your Revised paper submission received succesfully

Yahoo/Email Masuk

ISCEE 2020 <iscee@apps.ipb.ac.id>

Kepada:Momon Sodik Imanudin

Min, 11 Okt 2020 jam 10.02



ISCEE 2020
Bogor, Indonesia, November 2nd-4th 2020

Dear Momon Sodik Imanudin.

We have successfully received your revised paper, "Real-Time Irrigation Scheduling for Upland Crop based on Soil and Climate Characteristics of Tidal Lowland Area in South Sumatra".
Camera ready submission at 31st October 2020.

With best regards,
ISCEE 2020

Review Result - ISCEE 0612

Sel, 6 Okt 2020 jam 08.20

Yahoo/Terkirim

ISCEE . <iscee@apps.ipb.ac.id>

Kepada: momonsodikimanudin@fp.unsri.ac.id, MOMON SODIK IMANUDIN

Sel, 6 Okt 2020 jam 08.20

Dear **M S Imanudin:**

On behalf of the ISCEE 2020 Committee, we would like to inform you that your paper **ISCEE 061** entitled '**Real-Time Irrigation Scheduling For Dry Land Crop (Non-Paddy) Based On Soil And Climate Characteristics Of Tidal Lowland Area In South Sumatra**' has been reviewed by experts in the related field, and we request that you make **minor revision** before it is processed further. Please find your reviewed manuscript/s (**include any comment**) and the review report at the attachment.

Please revise your manuscript according to the reviewer's comment, and re-submit your revised manuscript through <https://iscee.ipb.ac.id/revised-paper-submission/> before **October 13th, 2020**. We ask you to accommodate all reviewers' comments at both manuscript and form. Please mark all modified in the manuscript with the other color or track changes function in Microsoft Word to be easily visible to the editor. The entire comments should be addressed, as acceptance is conditional on an appropriate response to the requirements and comments.

The editor has also conducted the Language evaluation for your manuscript. The suggested changes are marked using "track changes" (if any); please confirm, modify, or accept the revised. The similarity evaluation has also been conducted using Turnitin; the manuscript should be free of plagiarism, and similarity should be below 20%; your paper's similarity report is also attached. Please ensure your manuscript meets the similarity requirement.

In addition, please check the IOP conference template again and make sure that your paper follows the author guideline and template (available at <https://iscee.ipb.ac.id/4766-2/>). Please note that papers that will be submitted to IOP Conferences Series Earth and Environmental Science are accepted and presented at the conference.

If you have any questions regarding the reviews of your paper, please do not hesitate to contact us

See you on the 1st ISCEE 2020.

Best regards,

Heriansyah Putra

The 1st International Seminar on Civil and Environmental Engineering

ISCEE 2020, Bogor, Indonesia

MAKALAH DI TERBITKAN

Published online: 07 January 2021

<https://iopscience.iop.org/article/10.1088/1755-1315/622/1/012051>

The screenshot shows a Google Chrome browser window with the address bar containing the URL <https://iopscience.iop.org/article/10.1088/1755-1315/622/1/012051>. The page title is "Real-time irrigation scheduling for upland crop based on soil and climate characteristics of tidal lowland area in South Sumatera". The page is part of the "IOP Conference Series: Earth and Environmental Science" journal. The authors listed are M S Imanudin¹, S J Priatna¹, B M B Prayitno¹ and C Arif². The article is marked as "PAPER • OPEN ACCESS". The page also shows the total number of downloads (108) and a "Share this article" section with social media icons for email, Facebook, Twitter, and LinkedIn. The citation information is: "M S Imanudin et al 2021 IOP Conf. Ser.: Earth Environ. Sci. 622 012051" and the DOI is "10.1088/1755-1315/622/1/012051".

IOPscience Journals Books Publishing Support Login

IOP Conference Series: Earth and Environmental Science

PAPER • OPEN ACCESS

Real-time irrigation scheduling for upland crop based on soil and climate characteristics of tidal lowland area in South Sumatera

M S Imanudin¹, S J Priatna¹, B M B Prayitno¹ and C Arif²

Published under licence by IOP Publishing Ltd

[IOP Conference Series: Earth and Environmental Science, Volume 622, The First International Seminar on Civil and Environmental Engineering: "Robust Infrastructure Resilient to Natural Disaster", 2-4 November 2020, Indonesia](#)

Citation M S Imanudin et al 2021 IOP Conf. Ser.: Earth Environ. Sci. 622 012051

DOI 10.1088/1755-1315/622/1/012051

108 Total downloads

[Turn on MathJax](#)

Share this article

[Email](#) [Facebook](#) [Twitter](#) [LinkedIn](#)

Lampiran Makalah Yang Sudah Terbit

PAPER • OPEN ACCESS

Real-time irrigation scheduling for upland crop based on soil and climate characteristics of tidal lowland area in South Sumatera

To cite this article: M S Imanudin *et al* 2021 *IOP Conf. Ser.: Earth Environ. Sci.* **622** 012051

View the [article online](#) for updates and enhancements.

You may also like

- [Autoregressive Planet Search: Application to the Kepler Mission](#)
Gabriel A. Caceres, Eric D. Feigelson, G. Jogesh Babu et al.
- [Evaluation of the scheduling of an existing drip irrigation network: Fadak Farm, Karbala, Iraq](#)
Juhaina S Abdulhadi and Husam H Alwan
- [Synthesis, characterization, antimicrobial activity and mechanism of a novel hydroxyapatite whisker/nano zinc oxide biomaterial](#)
Jian Yu, Wenyun Zhang, Yang Li et al.

ECS Toyota Young Investigator Fellowship



For young professionals and scholars pursuing research in batteries, fuel cells and hydrogen, and future sustainable technologies.

At least one \$50,000 fellowship is available annually.
More than \$1.4 million awarded since 2015!



Application deadline: January 31, 2023

Learn more. Apply today!

Real-time irrigation scheduling for upland crop based on soil and climate characteristics of tidal lowland area in South Sumatera

M S Imanudin^{1*}, S J Priatna¹, B M B Prayitno¹, and C Arif²

¹Department of Soil Science, Sriwijaya University, Indralaya South Sumatra, Indonesia 30138

²Department of Civil and Environmental Engineering, IPB University, Bogor, Indonesia 16680

E-mail: momonsodikimanudin@fp.unsri.ac.id

Abstract. The research aims to determine the water requirement of plants based on soil and climate characteristics in the lowland area of South Sumatra. The study was conducted at the Soil Physics Laboratory, Soil Department, Faculty of Agriculture, Sriwijaya University. Soil samples were taken from lowland areas at Tidal Lowland Reclamation in Telang I Banyuasin. Field research was conducted from March to November 2019. Climatic data were differentiated into rainfall conditions below 2,500 mm/year and more than 2,500 mm/year. The BUDGET model was used for simulations to determine real-time irrigation scheduling. The indicator crop is tomatoes, with a scenario arranged at the dry season planting period. The results showed that in the condition of annual rainfall < 2,500 mm, farmers need more irrigation frequencies compared to rainfall > 2,500 mm. Irrigation is not required under normal climatic conditions. Farmers only need to maintain the groundwater table under 40 cm using gate operation in the tertiary canal. Rainfall was sufficient to fulfill crop evapotranspiration. However, the irrigation scheduling was done every week during the initial growing stage and every ten days in the vegetative up to generative stages in the dry climatic condition.

1. Introduction

The plant requires water for its growth and development. The plant continuously needs water, but water availability in terms of quantity, place, and time is not always available. This condition especially occurs during the dry season resulting in a decrease in farming enterprise. Irrigation effort is needed to maintain soil moisture in order to meet crop evapotranspiration. Therefore farmer can carry out the cultivation of crop during dry season.

Agricultural cultivation effort at tidal lowland reclamation area during the wet season is prioritized for rice crops. Therefore, the planting pattern consists of rice-rice. An effort to increase the planting index to 300 % is made by adding vegetable crops or second crops in the third planting season (MT3). The primary constraint at the MT3 period is water deficiency for crops [1]. Thus, a water management plan is required by considering water resource potential, water quality, and water application method. Water management strategy should include how much water to be applied, where it is applied, and priority during the dry season [2]. The capillary water movement is the main water source to fulfill crop evaporation requirement at wetland because water supply for crops can be fulfilled by capillary water movement from the groundwater table 40 cm below the soil surface [3]. Kadioglu et al. [4] had reported that the contribution of shallow groundwater table at loam soil within a depth of 30, 60, and 90 cm to supply crop water requirement was 97%, 71%, and 68%, respectively. Therefore, irrigation scheduling at the swamp area is closely related to groundwater table status in addition to rainfall.

Information related to water application consisting of applied water quantity and irrigation scheduling is essential for agricultural cultivation in the tidal lowland area in the third planting season or MT3 (June-September). In order to fully understand the irrigation scheduling concept, several processes related to water balance within the root zone must be understood. The governing components



are evapotranspiration calculation, the input of soil water and rainfall, soil water content status, crop water requirement, and computer modeling [2, 5]. Irrigation scheduling and calculation of crop water requirements in this research are aided by using BUDGET software [6]. The required data input consisted of climatic data, rainfall, soil characteristics, and crop. The research objectives were to determine the quantity of crop water requirements, irrigation water scheduling, and field strategy related to water application into the crop. The indicator crop was tomato.

2. Methodology

2.1. Place and Time

This study was conducted by soil sample taking and observation of land use at Telang Jaya Village of the tidal lowland reclamation area in Banyuasin District from June to July 2020. The land typology is C type which the tide water could not entry to the land (tertiary block).

2.2. Material and Equipment

This study's materials and equipment consisted of the soil sample, climatic data, daily rainfall at dry and wet seasons, computer software of ETo, and the BUDGET model.

2.3. Method

This study consisted of two stages. The first stage was field activity of soil sampling at a depth of 0-30 cm and 30-60 cm layers for textural analysis in the laboratory. Soil water retention characteristics such as saturated water content, field capacity, and permanent wilting point can be predicted from this soil texture data. This data is important in the calculation of irrigation water scheduling simulation. Observation of field conditions was conducted to access land-use type and water resource potential for irrigation.

The second stage was laboratory work, which consisted of soil textural analysis with the hydrometer and computer simulations. Calculation of crop water requirement (consumptive use) was conducted by calculating potential evapotranspiration which was affected by climatological factors. The calculation model for daily ETo was conducted by using the Penman-Monteith equation with the aid of a computer model of the ETo calculator [7]. Water requirement for the crop is ETo value multiplied by crop coefficient as follows:

$$ET_c = kc \times ET_o \quad (1)$$

ET_c is Crop evapotranspiration (mm/day), ET_o is Reference evapotranspiration (mm/day), kc is crop coefficient

Irrigation water scheduling is conducted by using the BUDGET computer model. The BUDGET calculates water content within soil profiles affected by water inflow and water outflow within a certain period. Soil profile generally consisted of several layers that have specific characteristics. At least information on soil texture should be available. The model calculates the change in daily water content storage. The main data input for the model is daily rainfall data, potential evapotranspiration data (ETo), crop data, which consisted of the crop coefficient for each growing stage.

Calculation of irrigation scheduling for tomato crops has consisted of two criteria, i.e., water quantity and water application period that will be given through irrigation. This study's chosen scheduling criteria was a constant time interval with different water quantity applications based on soil water availability conditions or soil moisture. The soil will be irrigated again to fulfill the field capacity of the soil (pF 2.5). The best irrigation scheduling criteria are based on water availability within the soil, which provides the highest efficiency of the irrigation system. Soil should be immediately irrigated before it attains a permanent wilting point condition (pF 4.2). The criterion for the irrigation time used was a constant or fixed interval of 10 days. The selection of this interval period was adjusted to water requirement calculation and rainfall. Operational implementation of irrigation time will be easier to be applied by farmers according to the simulated schedule from the *BUDGET* software. Irrigation was done

as an addition to the water supply to fulfill crop water requirements that could not be fulfilled by effective rainfall. Simulation results will show soil conditions with a lack of water that requires farmers to conduct irrigation (real-time irrigation scheduling).

3. Results and Discussion

3.1. General Description of Study Area

The field research was conducted at Telang Jaya Village, located at Jembatan II line number 8 (Primer 8), Muara Telang Sub-district. This location is one of the tidal lowland areas which is opened for the transmigration program in 1981. The main water source is from rainfall, and high tidal water only enters channels so that water in the channel only has a function to maintain groundwater table in the land is not quick drawdown.

Telang Jaya Village has four sub-villages and 22 heads of families. This village's distance to the Sub-district capital is 0.2 km, with a traveling time of 5 minutes. Agricultural land in this area is classified as C typology class (rainfed) covering about 960 ha. The previous model of water management network is based on a one-way *flow system* in which high tidal water enters through the primary channel and subsequently into a secondary provider channel in the form of a village irrigation channel (SPD), then into a tertiary provider channel, and finally, flow into farmland. During excessive water conditions (wet season), water from farmland outflow through the drainage tertiary channel and then into the main drainage channel (SDU) and subsequently into the primary channel. However, due to the topography effect and operational conducted by farmers, the flow has two directions. Water supply into the tertiary channel has come from SPD as well as SDU. During the low tide water period, water also flows into two directions, i.e., into SPD and SDU. These two ways, flow water is capable of accelerating the leaching process and more sufficient supply water during high tide.

Land ownership of farmers is 2 ha consisting of 1 ha Farm Land I (LU-1) and 1 ha Farm Land 2 (LU-2). Nowadays the land ownership had changed in which one farmer may have more than 2 ha of land. The planting pattern depends on land conditions, flooding type, water availability, and the existing drainage network facilities. There are two planting seasons, i.e., Planting Season 1 (MT1) consisting of rice cultivation from November to March and Planting Season 2 (MT2) from March to June. It is encouraged nowadays to have three times planting from June to September for horticultural crops or second crops. The tomato crop has high economic value, although its main constraint is lack of water in the dry season. There is no water supply from high tidal water irrigation, so that surface irrigation is needed.

An overview of the channel system can be seen in Figure 1. The primary channel is to convey water during high tidal periods and as a navigation facility (for water transportation). During the high tidal periods, water supply into secondary channels allows the farmer to collect water in ponds temporarily. The inflow of high tidal water into the channel allows soil water storage in shallow wells provided by a farmer for the irrigation water sources.



Figure 1. Primary and secondary channels at Telang Jaya Village

The main soil physical characteristic related to irrigation planning is soil texture. Table 1 showed that soil texture at the root zone (0-30 cm) is clay loam. The higher the clay content, the higher the micropores were, resulting in a low water flow rate within the soil profile. On the other hand, high sand content will provide more micro pores resulting in a high water flow rate. This, in turn, impacts the operational irrigation system in the form of more frequent irrigation applications to crop. This condition is in line with Humphreys research [8], which showed that water content available within the soil profile of clay loam soil (0-1 m) was only 96 mm compared to 180 mm for water content available within clay soil covered with mulch. Therefore, soil with clay loam texture requires more frequent irrigation than that of clay soil. The increase of sand fraction will increase pore space volume so that water flow is faster. Therefore, soils with rough texture will require more water than soil with fine texture [9].

Table 1. Analysis results of soil texture at a depth of 0-30 cm

Parameter	Unit	Value
Texture		
• Sand	%	36.91
• Loam	%	32.25
• Clay	%	30.84
Textural Class	-	(clay loam)
C-organic	%	4.98
Saturated Water Content	%	50
Field Capacity Water Content	%	39
Permanent Wilting Point Water Content	%	23

Remark: Calculation of soil water retention was done by using the BUDGET computer model

The study area has wet rainfall potential based on yearly rainfall distribution with an annual rainfall magnitude of more than 4,000 mm. The long dry season occurred in 2015 and 2019. Rainfall at those years was relatively similar to a magnitude of 4,039 mm. Water deficit occurred during the dry season of June to October period, while relatively even rainfall occurred in 2016 and repeated in 2020. Yearly rainfall in 2016 achieved 5,498 mm (Figure 2). This condition will be used as a base for computer simulation of the BUDGET model, i.e., determining real-time irrigation water scheduling during dry conditions (using rainfall data of 2015) and during wet conditions (using rainfall data of 2016). Rainfall occurs relatively frequently if the previous year is a dry condition (2015). Rainfall day numbers in 2105 were 173 days compared to 248 days in 2016. Figure 3 showed that rainfall in 2016 was almost evenly distributed for each month, so that rainfall water volume is higher than that of 2015. The drought occurred again in 2019 (four-year time interval) with a yearly rainfall of only 4,038 mm, which was close to 4,039 mm in 2015. The number of rainfall days in 2019 was also deficient, with a magnitude of 143 days. If the previous year is a long dry season, then it is directly followed by wet conditions. This had happened in 2020 where rainfall conditions were more evenly distributed and farmers do not need to conduct irrigation effort this year.

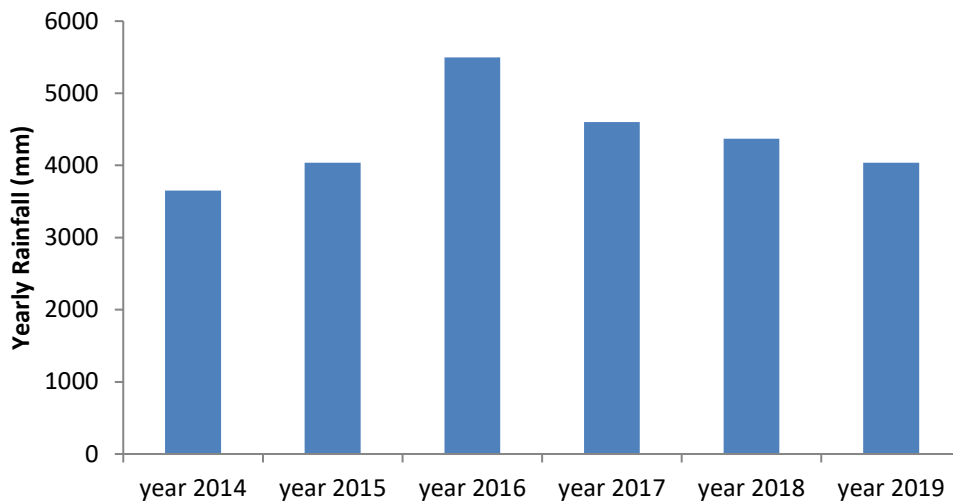


Figure 2. Yearly rainfall during five years period at the study area

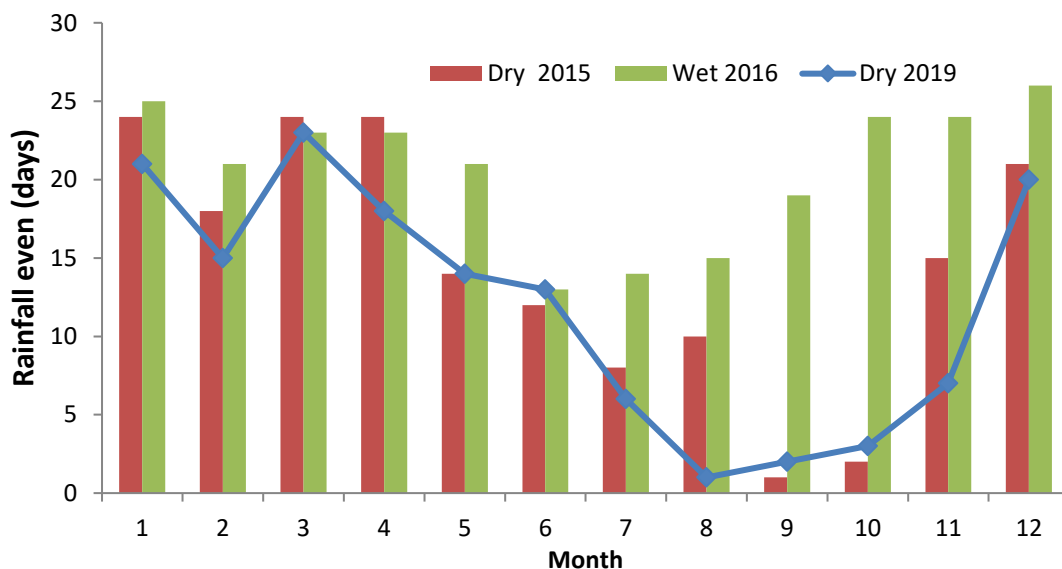


Figure 3. Distribution of rainfall days per month at dry and wet climatic conditions.

Yearly rainfall volume at climatic conditions in 2015 and 2019 was relatively similar, but monthly rainfall distribution was slightly different (Figure 4). Water deficit has occurred for four months in the 2015 year (July-October), and it is increased to 6 months in the 2019 year (June-November). This condition causes the South Sumatra area to experience extensive land fire disaster. Therefore, the water deficit period in the 2019 year was occurred from July up to November. In contrast, the water deficit period in 2016 has occurred only for two months (June-July) with a magnitude of less than -20-30 mm/month. This is in line which a previous study which showed that water deficit calculation at Gorontalo area was found in August and September where rainfall was less than potential evapotranspiration (ETP) and water surplus was found in January up to July as well as October up to December where rainfall was higher than potential evapotranspiration (ETp) [10]

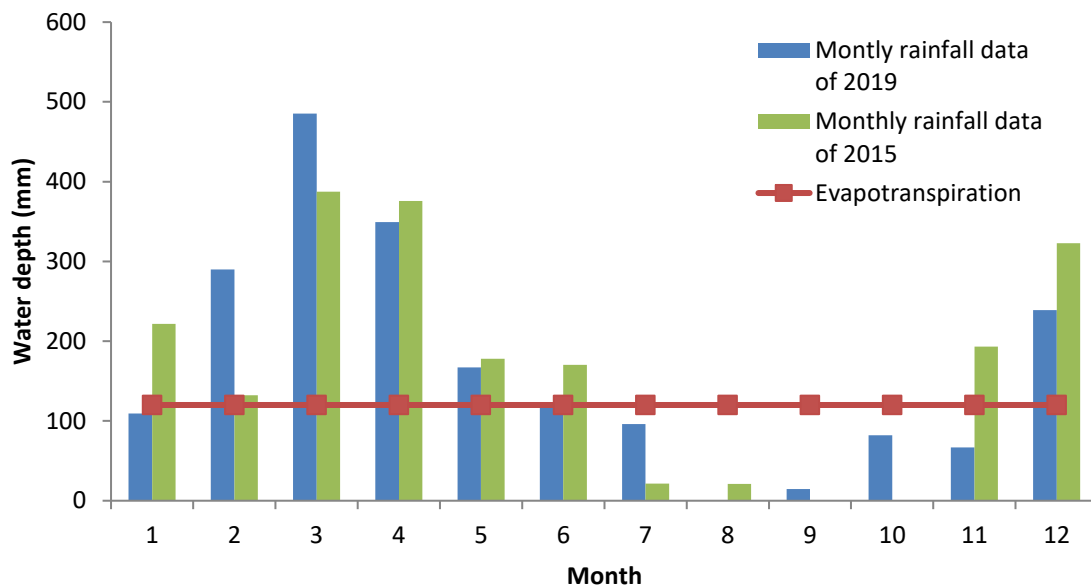


Figure 4. Relationship between monthly rainfall during dry and wet climatic condition with crop evapotranspiration.

3.2. Analysis of Soil Capability to Store Water and Crop Water Requirement

Soil solids have consisted of mineral materials and organic matter. Soil mineral is composed of sand, loam, and clay fractions. In addition to solids, soil also has pores space. The proportion of pores space within the soil is always filled with water or air. The pores space's volume is fixed at a specific depth, but it might be changed due to soil tillage or compaction. Water source within soil pores space originates from two sources, i.e., rainfall water or irrigation. The capability of the soil to store water is characterized by pores space magnitude. The soil at the study area has pores space of 50% at the upper layer (0-30 cm), which means that soil can store 50% of applied water from rainfall. If rainfall magnitude is 50 mm and root depth is 30 cm, then water stored by soil is $50/100 \times 300 \text{ mm} = 150 \text{ mm}$. It means that the first rainfall has not yet able to saturate the crop root zone.

Consumptive water requirement is affected by type and age of crop (crop growth stage). When the harvest starts to grow, the value of consumptive water requirement increases according to crop growth, and it will attain maximum value during the maximum vegetative growth period. After achieving maximum value, the value of the consumptive water requirement will decrease in line with seed maturation. The consumptive water requirement of the crop is affected by the crop factor or crop coefficient (kc).

In the calculation of crop water requirement for irrigation application purposes, the different values of crop coefficients (kc) are used which area is based on stages of crop growth. Table 2 showed the value of crop coefficient (kc) of tomato for different growing stage. Crop growth is divided into four growth phases consisting of the initial phase, development phase, middle phase, and final phase. The initial phase is from the germination phase up to the crop's initial growth in which crop closure is less than 10% of the planting area. The second phase is the crop development phase, which is started from the end of the initial phase until the crop is capable of covering soil 70-80% of the planting area. The third phase is the middle phase, i.e., after the crop capable of covering 80% of the soil surface up to begin to mature and enters flowering. The fourth phase is the final phase, where the crop is already mature and production which is ready to be harvested.

Reference crop evapotranspiration is affected by climatic conditions, and this can be calculated by using several methods. To determine the effect of crop characteristics on crop water requirement, then

crop coefficient (k_c) is a constant that relates E_{To} to E_{Tc} (crop evapotranspiration). The value of k_c is related to crop evapotranspiration, which is free of disease, grows in an extensive area with optimum soil humidity and good soil fertility, as well as to attain full production potential at a specific growth environment.

Table 2. Crop coefficient of tomato under the different growing stage [7]

Growth stages	Crop coefficient
Initial growth (I) 30 days	0.60
Vegetative Growth (II) 40 days	0.75
Generative stage (III) 45 days	1.15
Fruit formation (IV), 30 days	0.80

For safety reasons in fulfilling water requirement, irrigation application may use the highest value of crop coefficient with a magnitude of 1.10, especially at the third planting season (MT3) at tidal lowland in dry season condition. The evapotranspiration potential (E_{To}) values of the crop were in the range of 3.8 to 5.3 mm/day. At bright conditions without rainfall and maximum solar radiation, the E_{To} value was 5.5 mm/day. However, during October month due to smoke effect had caused a decrease in solar radiation so that E_{To} value was decreased in the range of 3.5 to 3.8 mm/day. If tomato crop growing requires a cultivation period of 60 days, then at least the required water was (4.5 mm/day \times 1.1 \times 60 day) = 297 mm.

Field research conducted by Jaya Negara et al. [11] showed that irrigation water requirement for tomato crops highly depends on crop growth phases. The fastest-growing cultivation period of tomato is 56 days. The phases for tomato crop growth are as follows: initial growth of 16 days, vegetative phase of 20 days, fruit formation phase until an initial harvest of 20 days. The average crop water requirement for a tomato at the initial phase was 3.5 mm/day, vegetative phase until fruit formation was 4.5 mm/day, and subsequently decrease prior to the harvest phase. Thus, the total water requirement for the crop in the field was about 266 mm. This value was not much different than the value obtained from a computer simulation.

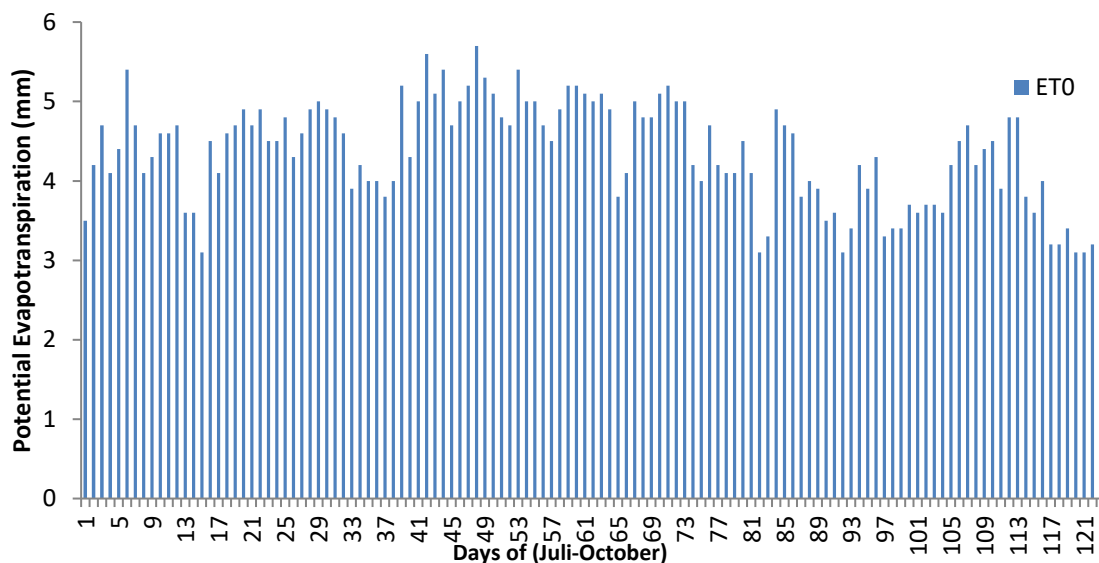


Figure 5. Daily dynamics of potential evapotranspiration values at Telang I area

3.3. Irrigation Water Scheduling for Tomato Crop at Tidal Lowland Area

The crop cultivation scenario was a dry climate condition in 2019 with deficient rainfall for the planting period of July to October. During the crop growing period, water balance in the land was in water deficit condition (-) in which monthly rainfall was much smaller than the evapotranspiration value. This condition requires the farmer to conduct irrigation. Consideration for crop cultivation at dry season was because the first and second planting seasons were still prioritized for rice crop and vegetable product prize at dry season is usually higher.

Irrigation scheduling has two main objectives: when and how much water should be applied to crop. Calculation of irrigation water requirement and irrigation water scheduling is usually based on three approaches: crop monitoring, soil water monitoring, and water balance analysis technique. Approaching a concept based on monitoring of crop growth condition and soil water monitoring requires high cost and a long time so that analysis technique based on soil water balance within crop root zone is the leading choice—monthly rainfall distribution at dry climatic condition (Figure 6).

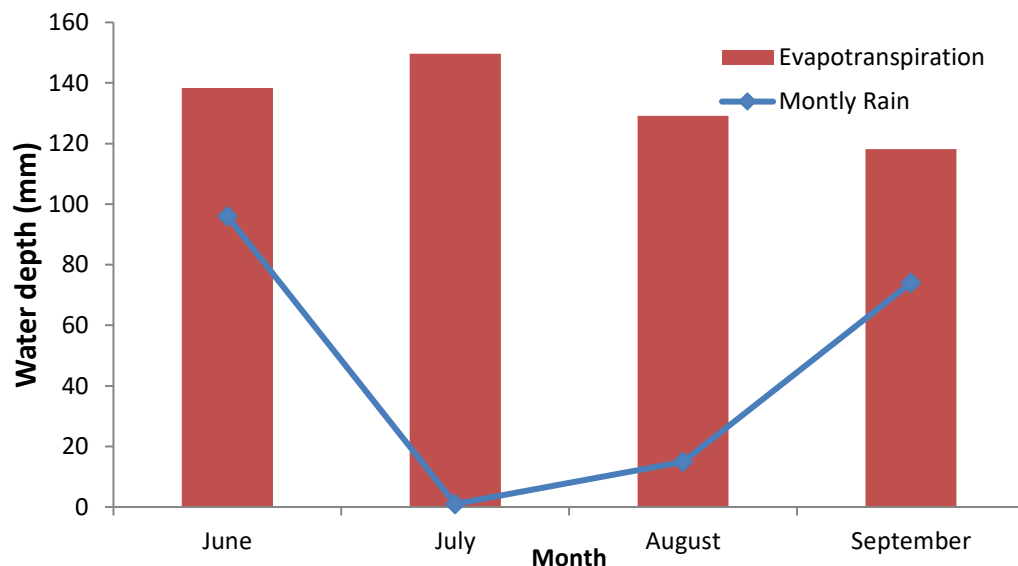


Figure 6. Monthly water balance at dry season condition in 2019

At the condition of an intense soil water surface (> 90 cm), capillary water's contribution is not sufficient to fulfill crop water requirement, so that irrigation is needed. Soil water dynamics during the end of the rainfall season period (April) and entering the dry season (July-August) can be seen in Figure 7. Therefore, computer simulation of the BUDGET model no longer enters soil water contribution as a water source.

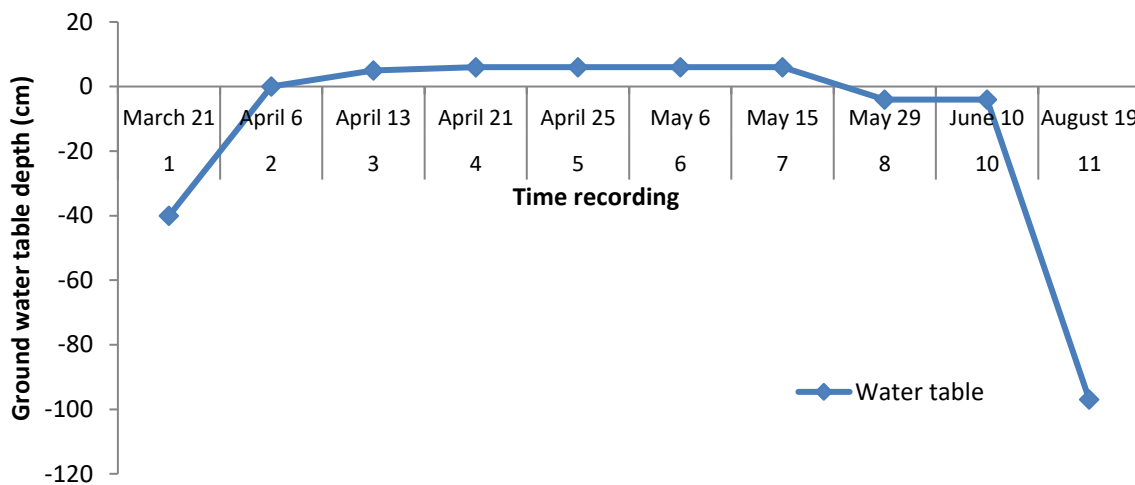


Figure 7. Soil water dynamics for the period of March to August 2020.

The planting period up to harvest was 145 days. Computer simulation results of the BUDGET model showed that there were ten times watering during the crop growth period with a total crop water requirement of 450-490 mm. More frequent watering was done at the initial growth period, i.e., once every 5-7 days, and watering was done once every ten days starting from the middle season up to the final period.

The computer simulation was perfect because it was supported by previous research [12], which showed that irrigation interval application for tomato crop at swampland was eight days and produced the best production with a magnitude of $1.280 \text{ kg.crop}^{-1}$ or equal to 28.4 ton.ha^{-1} .

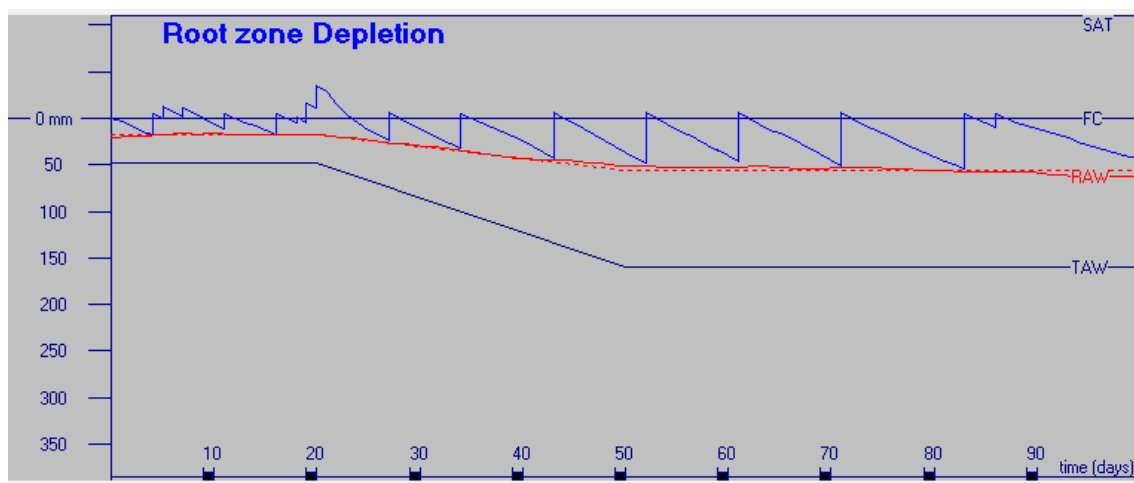


Figure 8. Irrigation water scheduling for tomato crop planted on 1 July 2019.

However, the dry season's watergate operation in the field was better conducted by using a close system to collect rainfall water. The tertiary channel should contain water at a minimum height of 80-100 cm or -30 cm from the embankment so that soil water in farmland was available at a depth of 30-40 cm. At a soil water depth of 20-40 cm, crop water requirement can still be supplied from the capillary water movement, and it is appropriate for vegetable crop growth such as tomato. The research for corn crops showed that the soil water surface drops up to 1 m depth, capillary water movement can only be

supplied 41 % of the crop evapotranspiration requirement [13]. Field drilling at the dry season in August 2020 showed that soil water surface was already at a depth of 90 cm. This condition showed that food crop cultivation should be provided with additional water supply from surface irrigation.

The second simulation (Figure 9) was conducted at a relatively wet climatic condition using the daily rainfall data of the 2016 year. This year's total yearly rainfall was more than 4000 mm, and it was evenly distributed throughout the year. The dry season period in June-August 2016 showed that rainfall occurrence was in the range of 10 to 15 days. Planting was still done from the July period. The simulation result showed that rainfall was sufficient to fulfill crop water requirements so that irrigation water was no longer needed in order to maintain soil moisture at field capacity conditions.

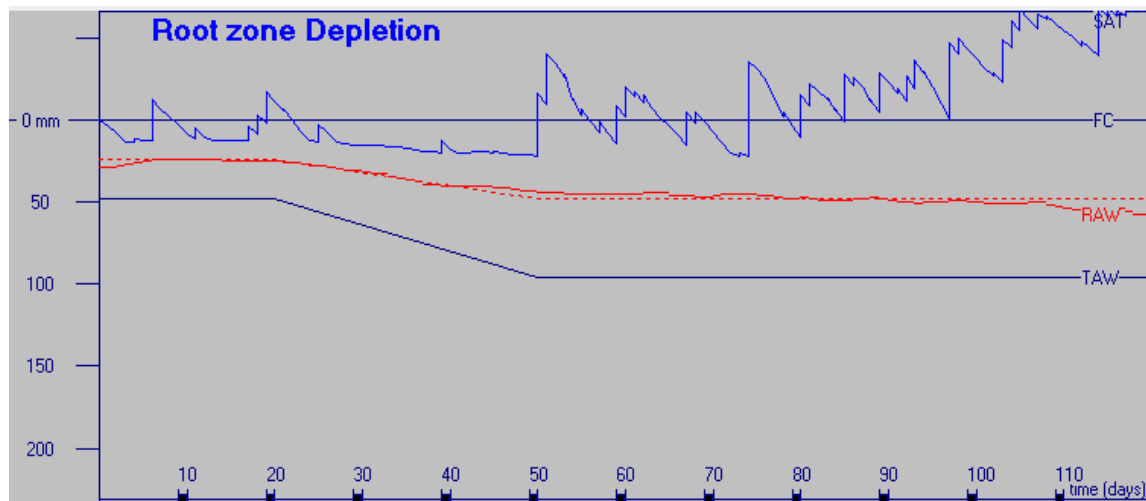


Figure 9. Condition of soil water status during the planting period of June

3.4. Irrigation Water Application in Field

Laboratory analysis results of soil texture in crop root zone showed that soil texture was clay loam. This soil has water retention characteristics as follows: saturated water content of 50%, field capacity water content of 39%, and permanent wilting point of 23%. Saturated water content represents the condition of total pore space. Therefore, the soil porosity value was also 50%. Soil capability to store water is 50%. Irrigation water scheduling shown in the BUDGET model was conducted to restore soil at field capacity. Still, farmers in the field conduct irrigation practice until saturated soil conditions (all pore space are filled with water). Irrigation usually was applied when readily available water was already run out. Simulation results showed that watering was conducted once a week (first month) at the initial growth period and once every ten days for the second and third months.

Irrigation water application within the root zone at a depth of 30 cm with total porosity of 50% had produced water storage thickness of $50/100 \times 300 \text{ mm} = 150 \text{ mm}$. If the area of crop planting is 1 ha (10,000 m²), then the water volume that should be given was 1,500 m³. The existing water resource utilizes high tidal water, which flows into a tertiary channel or rainfall water retention (Figure 10). Using open water gate operation, water in the tertiary channel only has a depth of 30-50 cm, which was insufficient for pump irrigation. But, if water gate operation was conducted by using high tidal water supply and rainfall water retention, then water in the tertiary channel had attained a depth of 110 cm, which is sufficient for pump irrigation.



Figure 10. Tertiary channel condition (a) less water at the opened gate and (b) more water due to detention operation

Pump irrigation application is the last choice when high tidal water cannot fulfill the farmland's water requirement. Land in the study area is categorized as C flooding type where high tidal water cannot overflow the land. Therefore the water management objective is to harvest rainfall water and retaining water in the tertiary canal after tidewater. Water can only enter into the tertiary channel. Irrigation water supply can only be applied by pumping (Figure 11).

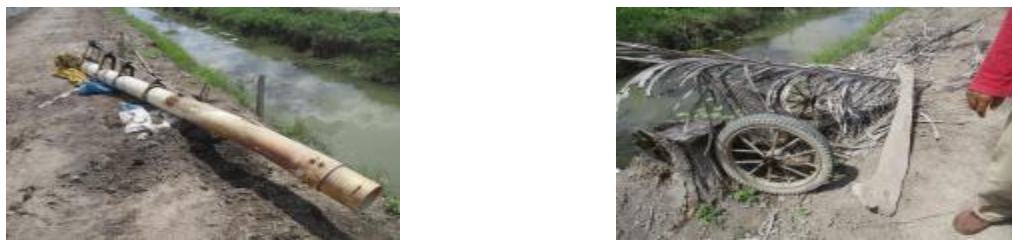


Figure 11. Equipment for the pump irrigation system at tidal lowland area of Telang I

The farmer usually plants vegetable crops by using a dike system so that irrigation application was conducted using the furrow irrigation model (Figure 12). Water is pumped from the tertiary channel into a quarterly channel, or sub-tertiary channel, which will subsequently fill the trenches among crop dikes.



Figure 12. Vegetable crops in the field using the furrow irrigation system

4. Conclusion and Recommendation

Land use analysis showed that the study area had the potential for three times planting (PI 300) with a rice-rice-vegetable planting pattern. The cultivated vegetables usually were string bean, etc. Tomato plant cultivation needs to be socialized. The simulation result for the tomato crop showed that crop water requirement was in the range of 450 to 490 mm. Irrigation water scheduling at dry climate (2019) showed that irrigation intervals were once every week for one month and subsequently once every ten

days. Meanwhile, simulation results for wet climatic conditions showed that irrigation was not required, and watergate operation was done using a retention system to maintain soil water surface at a depth of 30-40 cm. The irrigation strategy to achieve crop evapotranspiration during dry period in tidal lowland is to retain water in tertiary canal and rainfall harvesting method. Irrigation water supply to field area (tertiary block) should be done by the pump irrigation system. Water resource at the tidal lowland area of Telang 1 was from rainfall water and high tide water. High tide water at C-land typology could not enter into farmland, so that pump irrigation is required. Application of pump irrigation for 1 ha land requires an operational time of 5 hours with an average water discharge of 0.077 m³/s.

References

- [1] Imanudin, M S and Armanto M E, 2019 Determination of Planting Time of Watermelon Under a Shallow Groundwater Table in Tidal Lowland Agriculture Areas of South Sumatra, Indonesia *Irrig. Drain.* **68** 3 pp 488-95.
- [2] Gu Z, Qi Z, Burghate R, Yuan S, Jiao X, and Xu J, 2020 Irrigation scheduling approaches and applications: A review *J. Irrig. Drain. Eng.* **146** 6 p.04020007.
- [3] Imanudin M S, Satria J P, Bakri B, and Armanto M E 2020 Field Adaptation for Watermelon Cultivation under Shallow Ground Water Table in Tidal Lowland Reclamation Area *J. Wetlands Environ. Manag.* **8** 1 pp 1-10.
- [4] Kadioglu H, Hatterman-Valenti H, Jia X, Chu X, Aslan H, and Simsek H 2019 Groundwater Table Effects on the Yield, Growth, and Water Use of Canola (*Brassica napus* L.) *Plant Water* **11** 8 p 1730.
- [5] Fernández García I, Lecina S, Ruiz-Sánchez M C, Vera J, Conejero W, Conesa M R, Domínguez A, Pardo J J, Lélis B C, and Montesinos P 2020 Trends and Challenges in Irrigation Scheduling in the Semi-Arid Area of Spain *Water* **12** 3 p 785.
- [6] Raes D 2002 BUDGET model. A soil water and salt balance model. K.U.Leuven Faculty of Agricultural and Applied Biological Sciences Institute for Land and Water Management.
- [7] FAO 2009 Irrigation and Drainage Paper No 56.: "Crop Evapotranspiration" ETo calculator downloaded <http://www.fao.org/land-water/databases-and-software/eto-calculator/en/>
- [8] Humphreys E, White R J G, Smith D J, and Godwin D C, 2008 Evaluation of strategies for increasing irrigation water productivity of maize in southern New South Wales using the MaizeMan model *Aust. J. Exp. Agric.* **48** 3 pp 304-12
- [9] Minasny B and McBratney A B, 2018 Limited effect of organic matter on soil available water capacity *Eur. J. Soil Sci.* **69** 1 pp 39-47.
- [10] Rahim Y, Rogi J E, and Runtunuwu S D, 2015 Pendugaan defisit dan surplus air untuk pengembangan tanaman jagung (*Zea mays* L.) di Kabupaten Gorontalo dengan menggunakan model simulasi neraca air *Agri-sosioekonomi* **11** 1 pp 11-17.
- [11] Negara I D G J, Budianto M B, Supriyadi A, and Saidah H, 2020 Analisis kebutuhan air tanaman dengan metode caoli pada tanaman tomat dengan irigasi tetes di lahan kering lombok utara *Ganec Swara* **14** 1 pp 419-25.
- [12] Sy E M and Idrus M, 2010 Pengaruh Interval Waktu Pemberian Air terhadap Produktivitas Tanaman Tomat di Lahan Kering Dataran Rendah pada Musim Kemarau *Jurnal Penelitian Pertanian Terapan*, **10** 3 pp 207-12
- [13] Gao X, Huo Z, Qu Z, Xu X, Huang G, and Steenhuis T S, 2017 Modeling contribution of shallow groundwater to evapotranspiration and yield of maize in an arid area *Sci. Rep.* **7** 1 pp 1-13.